



## GREENLINE 40 HYBRID

# GREENLINE 40 HYBRID

## BROKER'S COMMENTS

This very modern and beautifully lined Greenline 40 hybrid is more than ahead of its time. With its hybrid drive and 2 economical and quiet VW engines 150 hp, this is real recreation. Has 2 cabins and 5 berths, folding swimming platform and a generous package of navigation equipment on board which makes this vessel very complete. You can view this ship in our covered sales marina in Loosdrecht.

*Mark Hesselmans*

## SPECIFICATIONS

<b>Dimensions</b>	11.99 x 4.25 x 0.85 (m)	<b>Builder</b>	Seaway Yachts
<b>Built</b>	2014	<b>Cabins</b>	2
<b>Material</b>	GRP	<b>Berths</b>	5
<b>Engine(s)</b>	2 x Volkswagen 150-5 TPI diesel	<b>Hp/Kw</b>	2 x 150.00 (hp), 110.40 (kw)
<b>Asking price</b>	sold (VAT )	<b>Lying</b>	at sales office

## CONTACT

<b>Sales office</b>	De Valk Loosdrecht B.V.	<b>Telephone</b>	+31 (0)35 582 90 30
<b>Address</b>	't Breukeleveense Meentje 6 1231LM Loosdrecht / Wijdmeren NL	<b>E-mail</b>	loosdrecht@devalk.nl

## DISCLAIMER

These particulars are given in good faith as supplied but cannot be guaranteed.



# GREENLINE 40 HYBRID

## GENERAL

Model	GREENLINE 40 HYBRID
Type	motor yacht
LOA (m)	11,99
Beam (m)	4,25
Draft (m)	0,85
Air draft (m)	3,63
Air draft min (m)	2,85
Headroom (m)	2,00
Year built	2014
Builder	Seaway Yachts
Country	Slovenia
Designer	J&J Design
Displacement (t)	8
CE norm	B
Hull material	GRP
Hull colour	off-white
Hull shape	hard chine
Keel type	bilge keels
Superstructure material	GRP
Rubbing strake	stainless steel
Deck material	GRP
Deck finish	teak
Superstructure deck finish	non-skid moulded in
Cockpit deck finish	yes
Antifouling (year)	2022
Window frame	Glued/ gelijmd
Window material	tempered glass
Deckhatch	yes
Portholes	stainless steel
Mast can be lowered	Fixed



# GREENLINE 40 HYBRID

Fuel tank (litre)	polyethylene 350 Ltr (BB)
Fuel tank 2 (litre)	polyethylene 350 Ltr (SB)
Level indicator (fuel tank)	yes
Freshwater tank (litre)	polyethylene 1 x 200 Ltr (BB) / 1 x 200 Ltr (SB)
Level indicator (freshwater)	yes
Blackwater tank (litre)	polyethylene 80 Ltr
Level indicator (blackwater)	yes
Greywater tank (litre)	400 Ltr
Wheel steering	hydraulic
Inside helm position	yes
Tiller	yes

## ACCOMMODATION

Cabins	2
Berths	5
Interior	cherry
Floor	woodprint
Open cockpit	yes
Deck saloon	yes
Headroom saloon (m)	2 Mtr
Sliding roof	electric Webasto with blinds
Heating	Through air conditioning
Air-conditioning	Reverse cycle airco
Chart table	yes
Dinette	yes
Opening door to cockpit	With large opening window
Galley	yes
Countertop	plastic
Sink	stainless steel 2x
Cooker	induction Gorenje Superpower
Microwave	Electrolux



# GREENLINE 40 HYBRID

Fridge	Gorenje 263 Ltr
Freezer	Gorenje
Hot water system	220V + engine
Water pressure system	electrical
Coffee maker	yes
Crockery	yes
Owners cabin	v-bed
Bed length (m)	2,00 x 0,80 Mtr (2x)
Wardrobe	hanging and shelves
Bathroom	en suite
Toilet	en suite
Toilet system	electric
Wash basin	in the bathroom
Shower	en suite
Guest cabin 1	twin single
Bed length (m)	2,00 x 0,80 (2x)
Wardrobe	hanging and shelves
Washing machine	Candy Aquamatic 1041 D1 4kg
Extra info	Exterior screen blinds

## MACHINERY

No of engines	2
Make	Volkswagen
Type	150-5 TPI
HP	150
kW	110.40
Fuel	diesel
Year installed	2014
Maximum speed (kn)	13
Cruising speed (kn)	7
Range (nm)	500



# GREENLINE 40 HYBRID

Engine hours	650
Engine cooling system	freshwater heat exchanger
Drive	shaft
Shaft seal	Volvo Penta seal
Engine controls	electrical ZF
Gearbox	hydraulic
Bowthruster	electric Sidepower SE80-185T
Sternthruster	Sidepower SE80-185T
Electric hybride drive	2 x 7KW
Gearbox	hydraulic
Exhaust	watercooled
Thrust bearing	Aquadrive
Propeller type	fixed
Propeller blades	2 x 4
Propeller shaft material	stainless steel
Shaft lubrication	water
Manual bilge pump	yes
Electric bilge pump	yes
Bilge alarm	yes
Electrical installation	12/ 220 volt
Start battery	2 x Optima (2021)
Service battery	2 x Mastervolt gel (2017)
Electric engine battery	yes
Bowthruster battery	2 x Optima blue (2019)
Sternthruster battery	2 x Optima Blue (2019)
Battery monitor	yes
Battery charger	Victron Centaur 12/80
Inverter	Victron Quattro 48/ 5000/70
Solar panel	1398 W 48V
Diode battery combiners	yes
Shorepower	with cable
Trimtabs	Bennet



## Extra info

Wireless remote for bow & stern thruster

## NAVIGATION

Compass

Plastimo LiQuid

Electric compass

(plotter)

Depth sounder

(Plotter)

Log

(Plotter)

VHF

Garmin VHF 100I

Autopilot

Garmin GHC10 +wired remote

Rudder angle indicator

VDO

Radar

Garmin HD closed scanner

GPS

Garmin

Plotter

Garmin GPSmap 5012

Electronic chart(s)

1 x

AIS receiver

Class B

AIS transponder

Class B

Camera

Rear view

Navigation lights

yes

Searchlight

Remote control at helm

## EQUIPMENT

Fixed windscreen

yes

Cockpit cover

yes

Cockpit cushions

yes

Bathing platform

Trough fold down stern

Boarding ladder

stainless steel

Gangway

Opacmarte electric hydraulic telescopic

Deck shower

Hot & cold

Anchor

Pool Rvs

Anchor chain

yes

Windlass

electrical



# GREENLINE 40 HYBRID

Capstan	On windlass
Deck wash	yes
Sea railing	stainless steel
Grab rail (superstructure)	stainless steel
Railing side opening gates	3 x
Pulpit	yes
Life raft	yes
Life raft (pers)	yes
Lifebuoy	Automatic
Wiper	3 x
Window ventilator	Cold air
Horn	electric
Fenders	yes
Mooring lines	yes
TV	Philips 80 cm/ Philips 60 cm
TV receiver	yes
Radio-cd player	Fusion AV700I
DVD player	yes
Cockpit speakers	yes
Speakers in salon	2 x Fusion
Clock - barometer	yes
Fire extinguisher	yes
Extinguisher in engine room	yes
Auto extinguisher system	yes





# GREENLINE 40 HYBRID



# GREENLINE 40 HYBRID





# GREENLINE 40 HYBRID



# GREENLINE 40 HYBRID





# GREENLINE 40 HYBRID



# GREENLINE 40 HYBRID

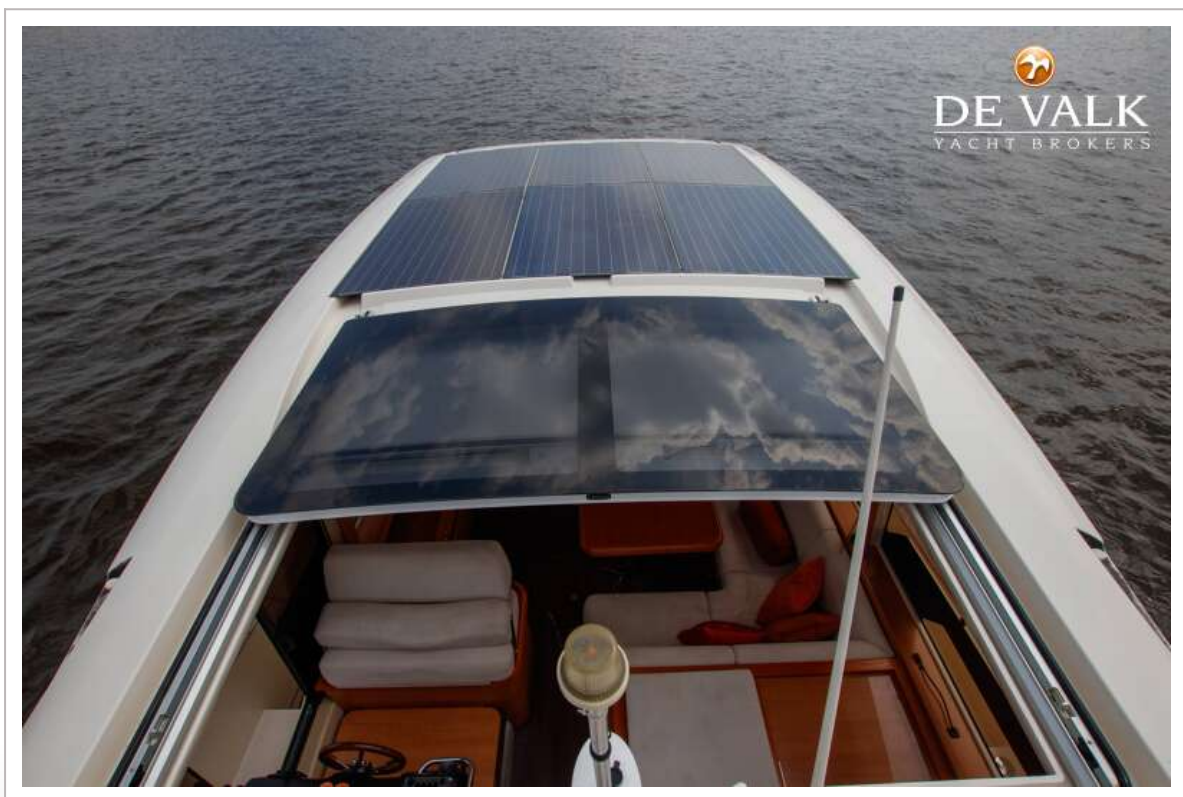
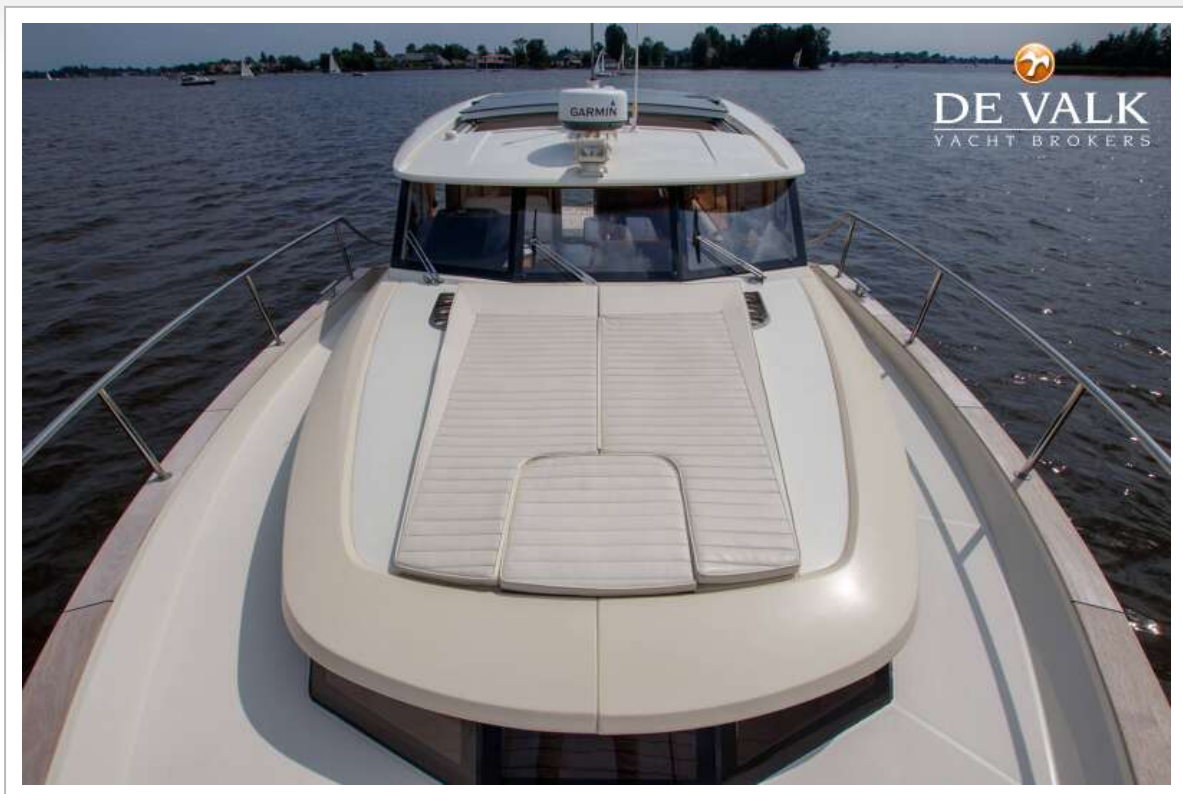




# GREENLINE 40 HYBRID



# GREENLINE 40 HYBRID





# GREENLINE 40 HYBRID

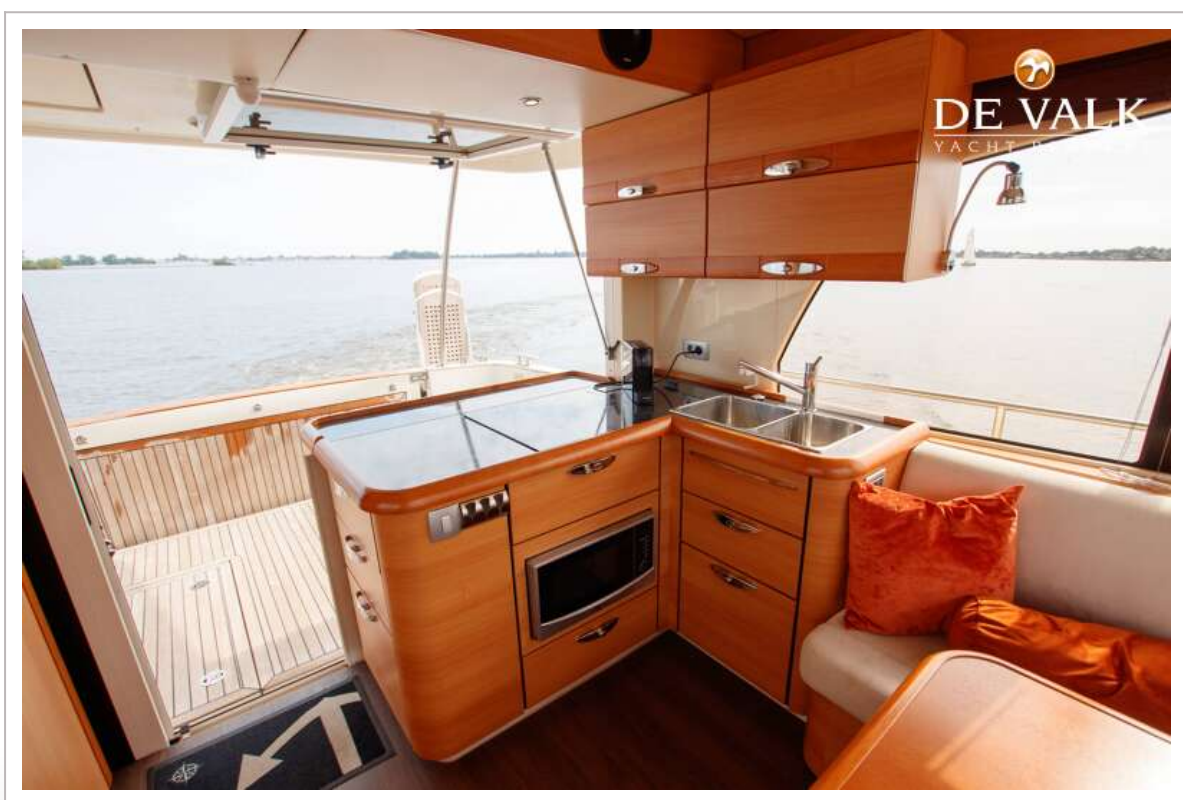
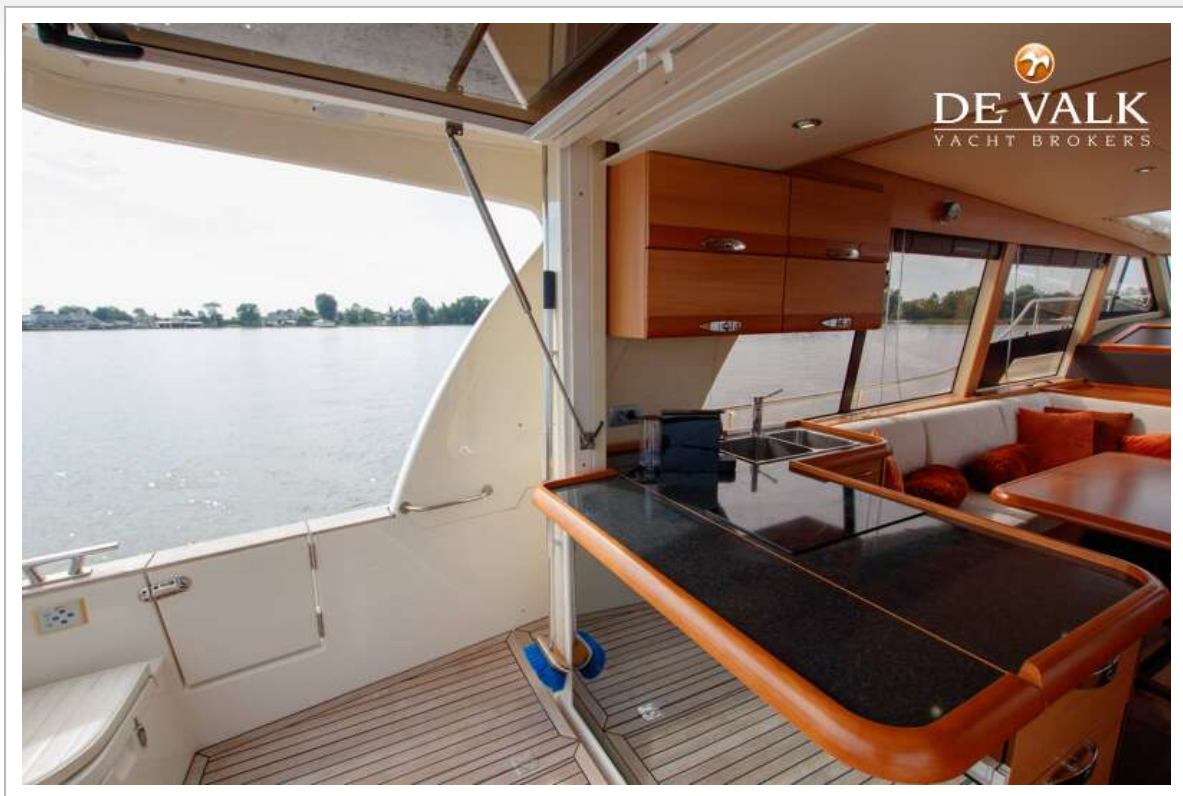


# GREENLINE 40 HYBRID

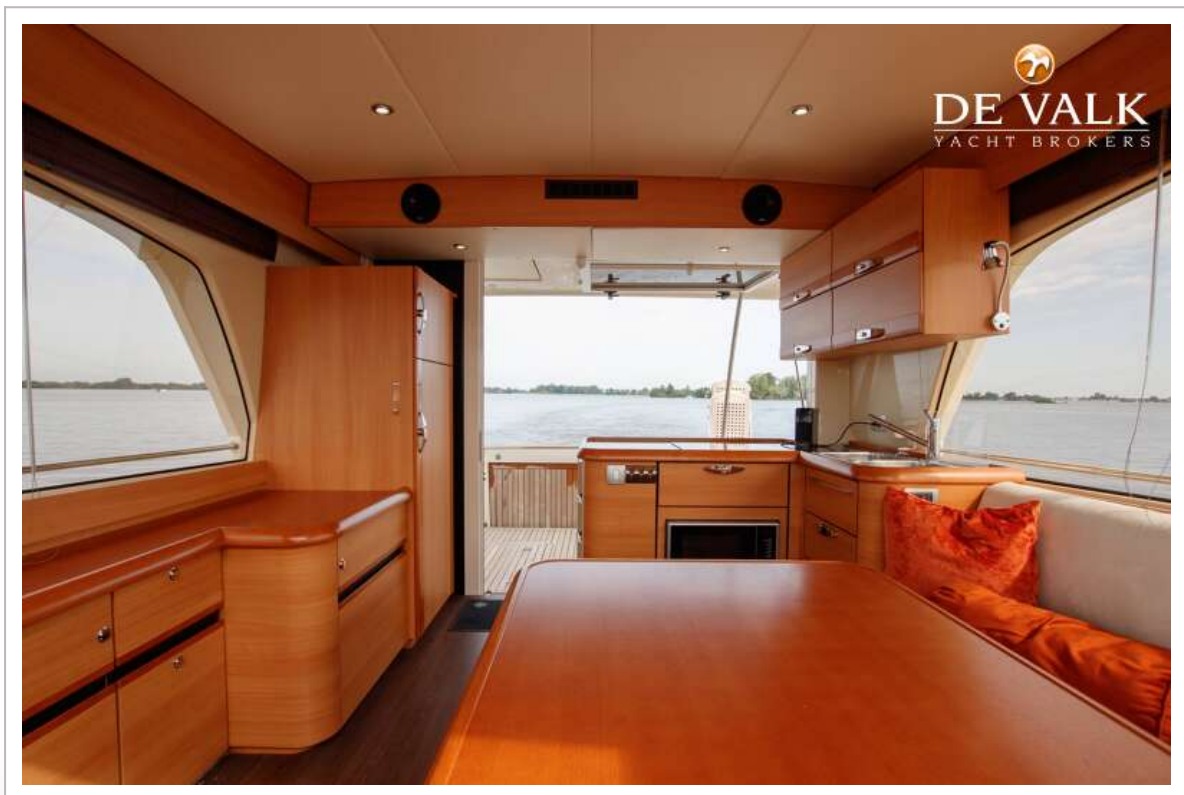




# GREENLINE 40 HYBRID



# GREENLINE 40 HYBRID

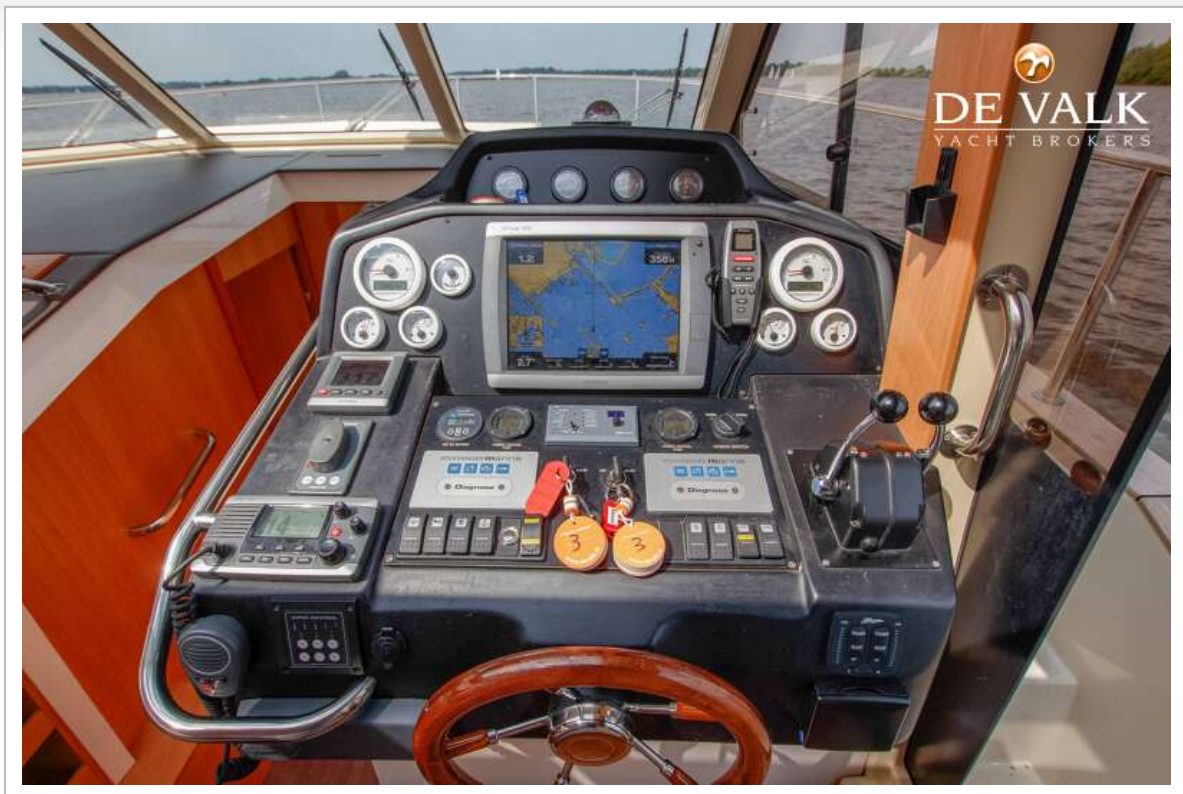




# GREENLINE 40 HYBRID



# GREENLINE 40 HYBRID





# GREENLINE 40 HYBRID



## GREENLINE 40 HYBRID

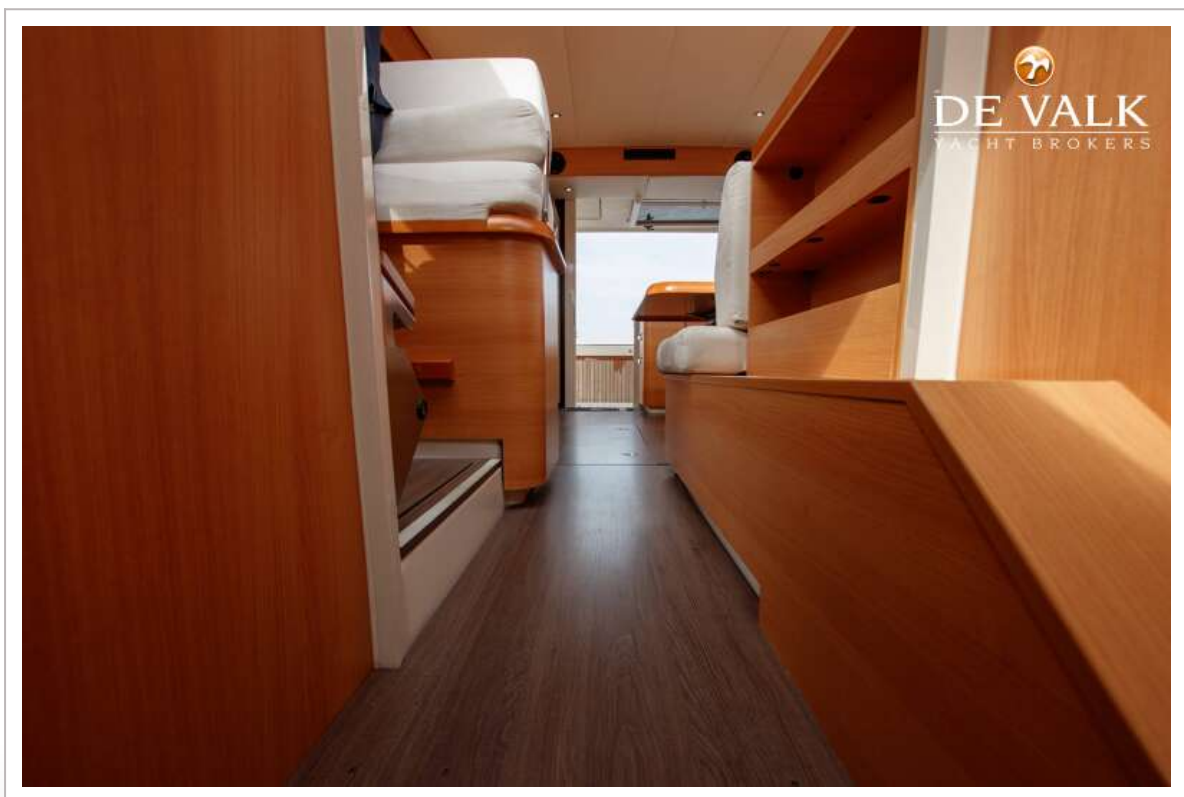




## GREENLINE 40 HYBRID



# GREENLINE 40 HYBRID



# GREENLINE 40 HYBRID





# GREENLINE 40 HYBRID



# GREENLINE 40 HYBRID

