



DE VALK
YACHT BROKERS



LINSSEN GRAND STURDY 430 AC TWIN



DE VALK
YACHT BROKERS

LINSSSEN GRAND STURDY 430 AC TWIN

BROKER'S COMMENTS

Linssen stands for quality, reliability, design and comfort. This Grand Sturdy 430AC Twin version also adds excellent sailing and maneuvering characteristics. In short, a wonderful motor yacht to sail on, for long onboard stays and so practical in every respect. She further excels in the large amount of living and storage space on board and from the salon you have a beautiful overview of the surroundings. The aft deck with ditto view is easily accessible and the sidedecks with side entry are nice and wide. Just a very nice gentleman's motor yacht in all aspects.

Sjoerd Paddenburg

SPECIFICATIONS

| | | | |
|---------------------|-----------------------------------|----------------|------------------------------|
| Dimensions | 13.17 x 4.31 x 1.23 (m) | Builder | Linssen Yachts |
| Built | 2004 | Cabins | 2 |
| Material | Steel | Berths | 6 |
| Engine(s) | 2 x Volvo Penta TAMD 41H-B diesel | Hp/Kw | 2 x 145.00 (hp), 106.72 (kw) |
| Asking price | sold (VAT) | Lying | at sales office |

CONTACT

| | | | |
|---------------------|--|------------------|----------------------|
| Sales office | De Valk Loosdrecht B.V. | Telephone | +31 (0)35 582 90 30 |
| Address | 't Breukeleveense Meentje 6 1231LM Loosdrecht / Wijdmeren NL | E-mail | loosdrecht@devalk.nl |

DISCLAIMER

These particulars are given in good faith as supplied but cannot be guaranteed.



LINSSEN GRAND STURDY 430 AC TWIN

GENERAL

| | |
|-----------------------------|----------------------------------|
| Model | LINSSEN GRAND STURDY 430 AC TWIN |
| Type | motor yacht |
| LOA (m) | 13,17 |
| Beam (m) | 4,31 |
| Draft (m) | 1,23 |
| Air draft (m) | 2,95 |
| Air draft min (m) | 5,50 |
| Headroom (m) | 1,98 |
| Year built | 2004 |
| Builder | Linssen Yachts |
| Country | The Netherlands |
| Designer | Linssen Yachts |
| Displacement (t) | 19 |
| CE norm | B |
| Hull material | steel |
| Hull colour | black |
| Hull shape | multi hard chine |
| Superstructure material | steel |
| Rubbing strake | fender rope |
| Deck material | steel |
| Deck finish | teak |
| Cockpit deck finish | teak |
| Window frame | aluminium |
| Window material | tempered glass Tinted |
| Deckhatch | 2 x |
| Portholes | aluminium Tempered glass |
| Insulation | foam |
| Mast can be lowered | hydraulic (radar mast) |
| Fuel tank (litre) | steel 2 x 580 |
| Level indicator (fuel tank) | yes |



LINSSEN GRAND STURDY 430 AC TWIN

| | |
|------------------------------|--|
| Freshwater tank (litre) | polyethylene 1 x 550 |
| Level indicator (freshwater) | yes |
| Blackwater tank (litre) | polyethylene 1 x 220 |
| Level indicator (blackwater) | yes |
| Blackwater tank extraction | deck extraction + pump |
| Wheel steering | hydraulic |
| Inside helm position | yes |
| Outside helm position | yes |
| Emergency tiller | yes |
| Extra info | There are a multitude of opening windows, portholes and deckhatches. So lots of ventilaton and light can come into the interior. |
| Extra info | Headway mast up; 5,50 mtr, mast down; 3,80 mtr, all down (incl. windows); 2,95 mtr |
| Extra info | Sun-covers for salon windows. Cover for helmposition outside plus helmsman seats for in- and outside. |

ACCOMMODATION

| | |
|-------------------------------|---|
| Cabins | 2 |
| Berths | 6 |
| Interior | cherry |
| Floor | teak and holly |
| Aft deck | yes |
| Pilot house/deck saloon | with U-shape settee |
| Headroom saloon (m) | 1,98 mtr |
| Heating | central hot water Eberspacher Hydronic 10 |
| Aft Cabin | yes |
| Dinette to convert into berth | into double bed (1,94 x 1,20 mtr) |
| Opening door to aft deck | yes |
| Galley | yes |
| Countertop | Corian |
| Sink | stainless steel 1 x |



LINSSEN GRAND STURDY 430 AC TWIN

| | |
|-----------------------|--|
| Cooker | electric Siemens 4 burner (220v, 2 x 1200w / 1 x 1800w / 1 x 2100w) |
| Microwave/oven combi | Severin (220v) |
| Fridge | with freezer compartment + Engel 12v fridge |
| Hot water system | 220V + engine |
| Water pressure system | electrical |
| Crockery | Plates, glasses and cutlary |
| Owners cabin | double bed |
| Bed length (m) | 2,00 x 1,60 mtr (headway: 2,00 mtr) |
| Wardrobe | hanging and shelves |
| Bathroom | en suite 1 (headroom 1,96mtr) |
| Toilet | en suite |
| Toilet system | electric |
| Wash basin | in the bathroom |
| Shower | separate |
| Extra info | matress with slats |
| Guest cabin 1 | bunk bed |
| Bed length (m) | 2,00 x 0,80 mtr (headroom: 1,98 mtr) |
| Wardrobe | hanging and shelves |
| Bathroom | en suite 2 (headroom: 1,95 mtr) |
| Toilet | en suite |
| Toilet system | electric |
| Wash basin | in the bathroom |
| Extra info | Matress's with slats |
| Extra info | There is an abundance of storage in lockers, cabinets, under the floor, etc. |

MACHINERY

| | |
|---------------|-------------|
| No of engines | 2 |
| Make | Volvo Penta |
| Type | TAMD 41H-B |
| HP | 145 |



LINSSEN GRAND STURDY 430 AC TWIN

| | |
|---------------------------------|--|
| kW | 106.72 |
| Fuel | diesel |
| Year installed | 2003 |
| Maximum speed (kn) | 9 |
| Cruising speed (kn) | 7,5 |
| Engine hours | 3155 |
| Engine cooling system | freshwater heat exchanger |
| Drive | shaft |
| Engine controls | bowden cable Morse |
| Gearbox | ZF hydraulic |
| Bowthruster | electric Sidepower 12 hp + remote |
| Sternthruster | electric Sidepower 8 hp + remote |
| Exhaust | watercooled |
| Thrust bearing | Python Drive (new 2021) |
| Propeller type | fixed |
| Propeller blades | 4 |
| Propeller shaft material | stainless steel |
| Shaft lubrication | water |
| Electric bilge pump | yes |
| Bilge alarm | yes |
| Electrical installation | 12v / 220v |
| Generator | wet exhaust Onan 7kW (in soundproof box), 1500 rpm |
| Running hours generator | Approx. 330 |
| Start battery | 4 x Victron AGM 90ah (2022) |
| Service battery | 4 x Exide 85ah |
| Generator battery | Victron AGM |
| Bowthruster battery | Victron AGM |
| Sternthruster battery | Victron AGM |
| Battery charger | Mastervolt 12v/60amp |
| Inverter | Mastervolt 12v/220v/2000watt |
| Shorepower | with cable |
| Extra info | Twin fuel filter system with change-over valve |



LINSSEN GRAND STURDY 430 AC TWIN

NAVIGATION

| | |
|------------------------|---|
| Electric compass | Raymarine ST60 |
| Multi control display | Raymarine ST60 Tridata |
| Depth sounder/log | Raymarine I70 |
| VHF | Raymarine 260 + outside helmstation connection with intercom function |
| Autopilot | Raymarine ST6001 + Raymarine P70R |
| Rudder angle indicator | via autopilot |
| Radar | Raymarine 18" 4kW |
| GPS | Raystar 120 |
| Plotter | Raymarine 12" ES125 (no touchscreen) + Raytheon RC520 |
| Electronic chart(s) | 1 x |
| AIS transponder | Raymarine AIS650 transponder |
| Navigation lights | yes |
| Searchlight | yes |
| Extra info | Raymarine Actisense nmea converter + Raymarine DST800 tri-ducer |
| Extra info | Wifi Engenius + Pepwave router |

EQUIPMENT

| | |
|------------------|---|
| Fixed windscreen | (collapsable) |
| Sprayhood | yes |
| Cockpit cover | yes |
| Cockpit cushions | yes |
| Cockpit table | yes + cockpit seats |
| Bathing platform | with teak |
| Boarding ladder | stainless steel |
| Deck shower | hot + cold |
| Anchor | Bruce |
| Anchor chain | Approx. 25 mtr |
| Windlass | electrical Vetus Alexander III (1000watt) |



LINSSEN GRAND STURDY 430 AC TWIN

| | |
|-----------------------------|--|
| Capstan | Vetus Alexander III |
| Deck wash | yes |
| Davits | stainless steel Whittal (2 x 120kg) |
| Davits controls | manual |
| Sea railing | tube |
| Grab rail (superstructure) | yes |
| Railing side opening gates | 2 x with fold-down boarding ladder |
| Pushpit | with fender holders |
| Pulpit | with fender holders |
| Life raft | container Plastimo |
| Life raft (pers) | 4 |
| Last life raft survey | (expired) |
| Lifejackets | 2 x |
| Wiper | 4 x (2 x with wash function on inside station) |
| Horn | electric |
| Fenders | with fender holders on railing |
| Mooring lines | yes |
| TV | on lift, in salon |
| TracVision ball | KVH |
| Radio | Fusion |
| Cockpit speakers | yes |
| Speakers in salon | yes |
| Clock - barometer | yes |
| Fire extinguisher | 2 x, valid till 2022 |
| Extinguisher in engine room | (not serviced) |



LINSSEN GRAND STURDY 430 AC TWIN



LINSSEN GRAND STURDY 430 AC TWIN



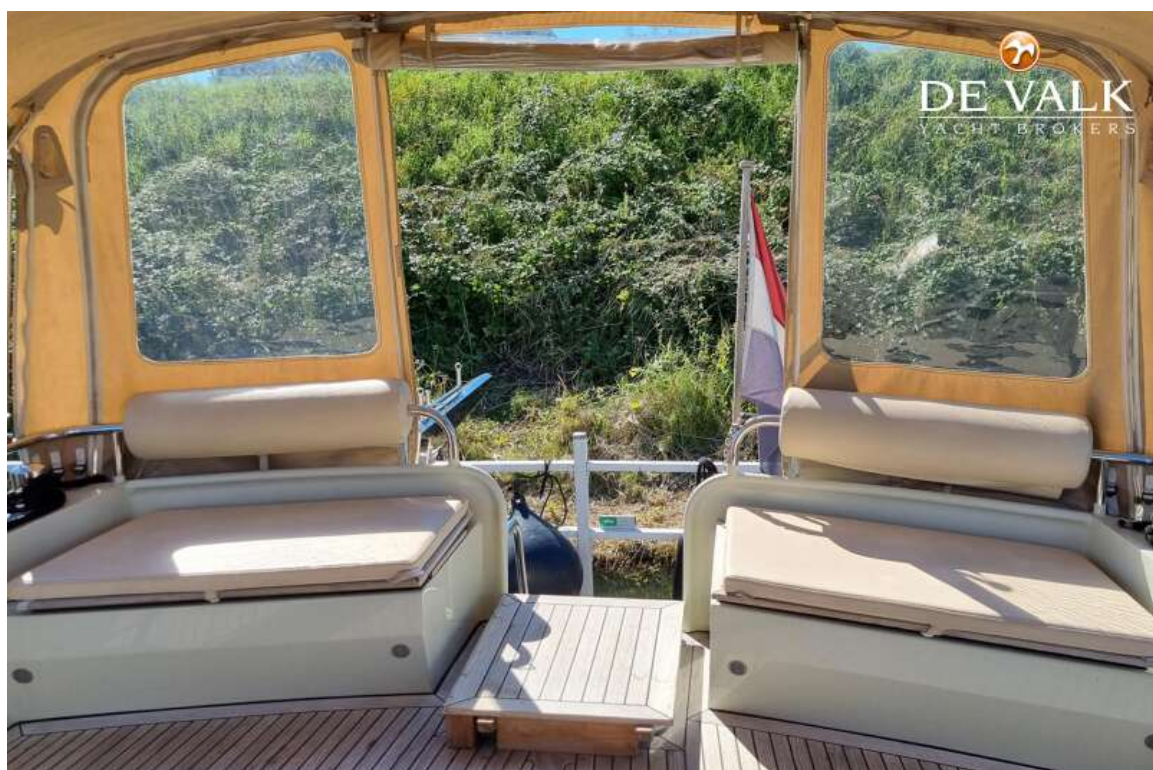
LINSSEN GRAND STURDY 430 AC TWIN



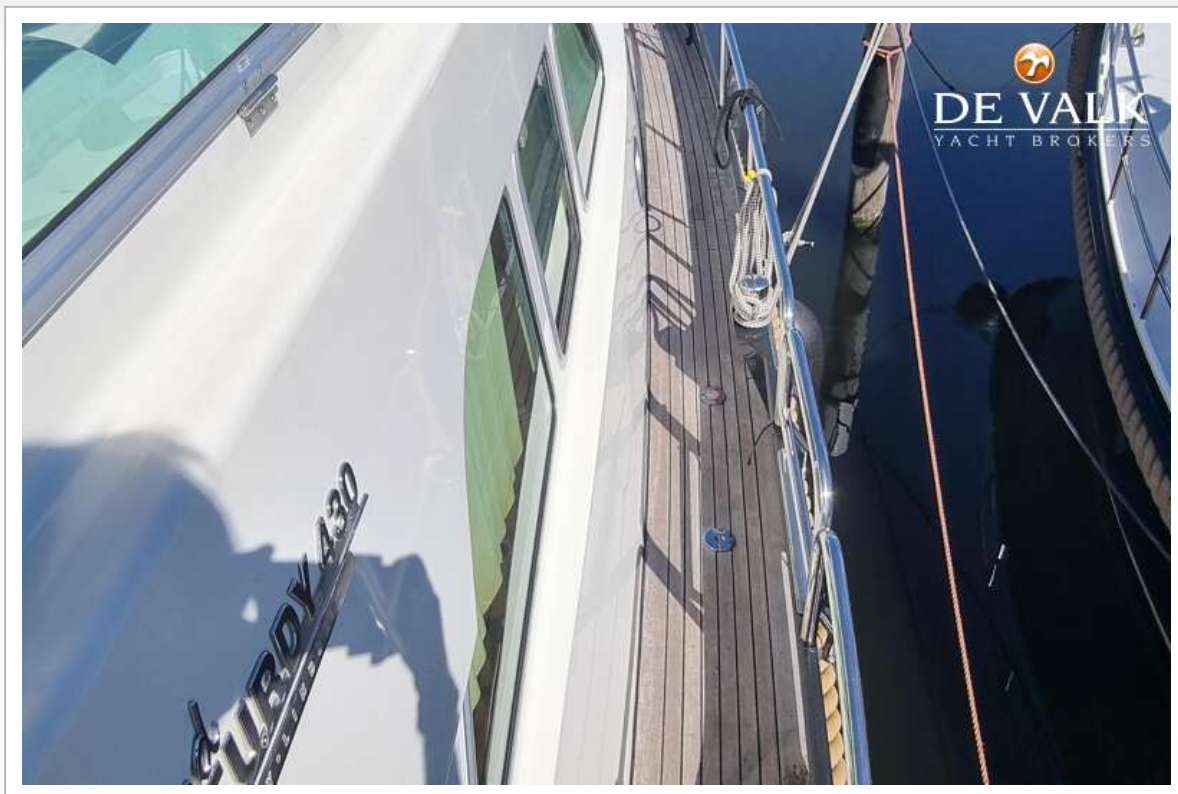
LINSSEN GRAND STURDY 430 AC TWIN



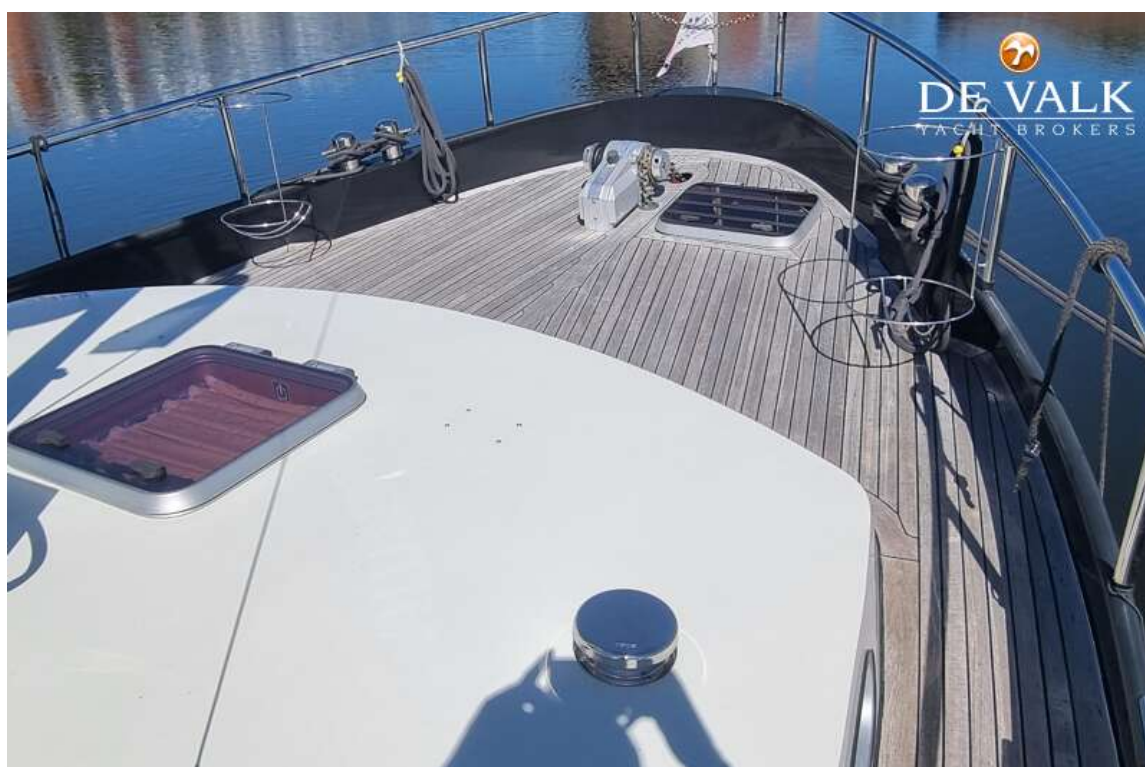
LINSSEN GRAND STURDY 430 AC TWIN



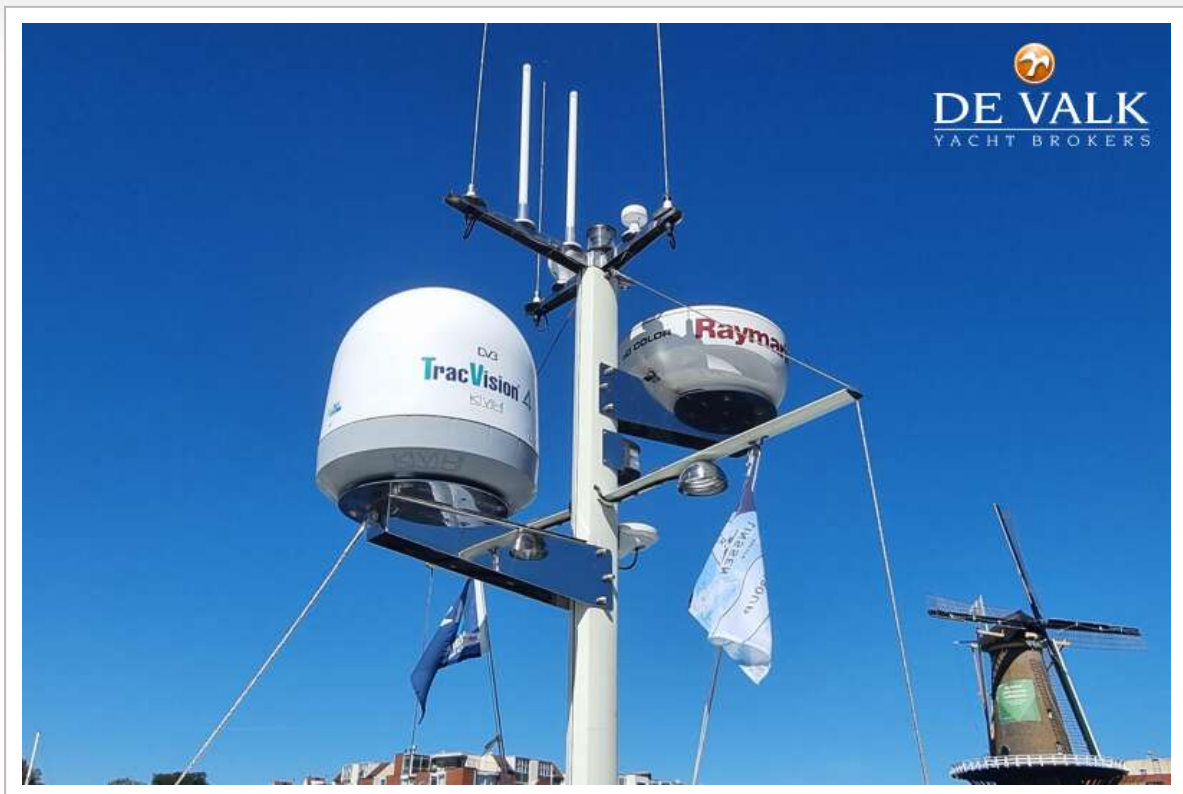
LINSSEN GRAND STURDY 430 AC TWIN



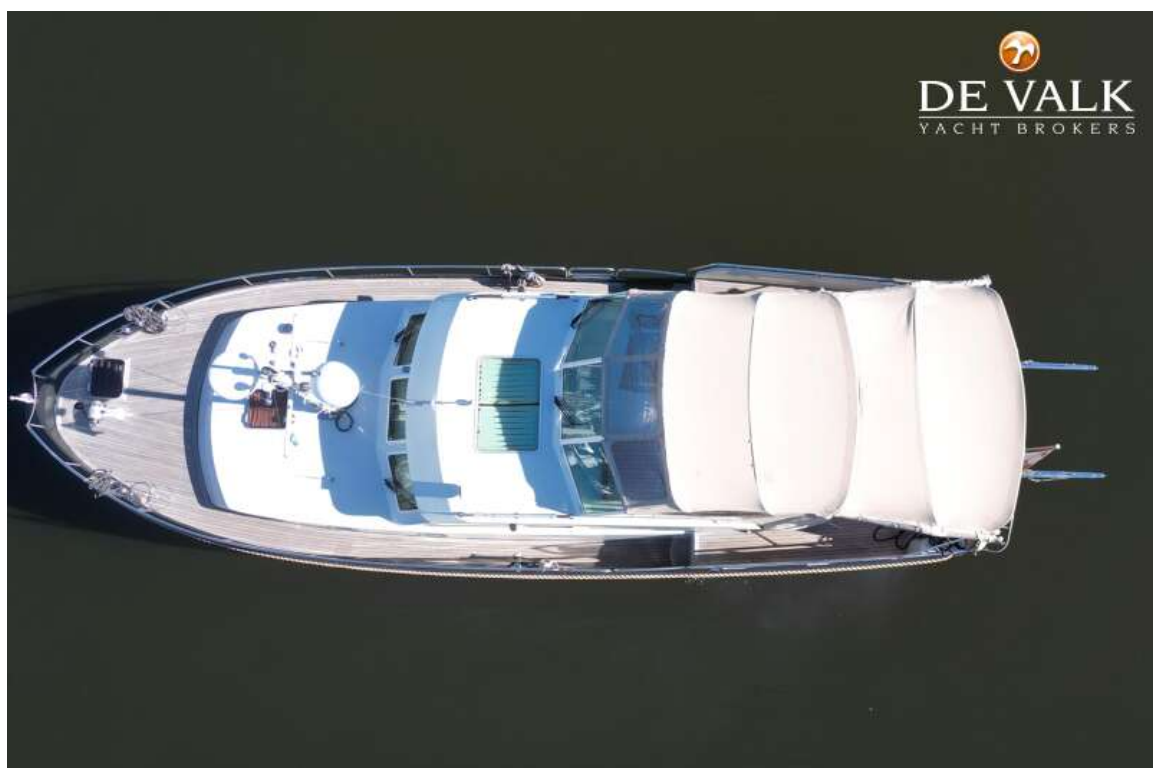
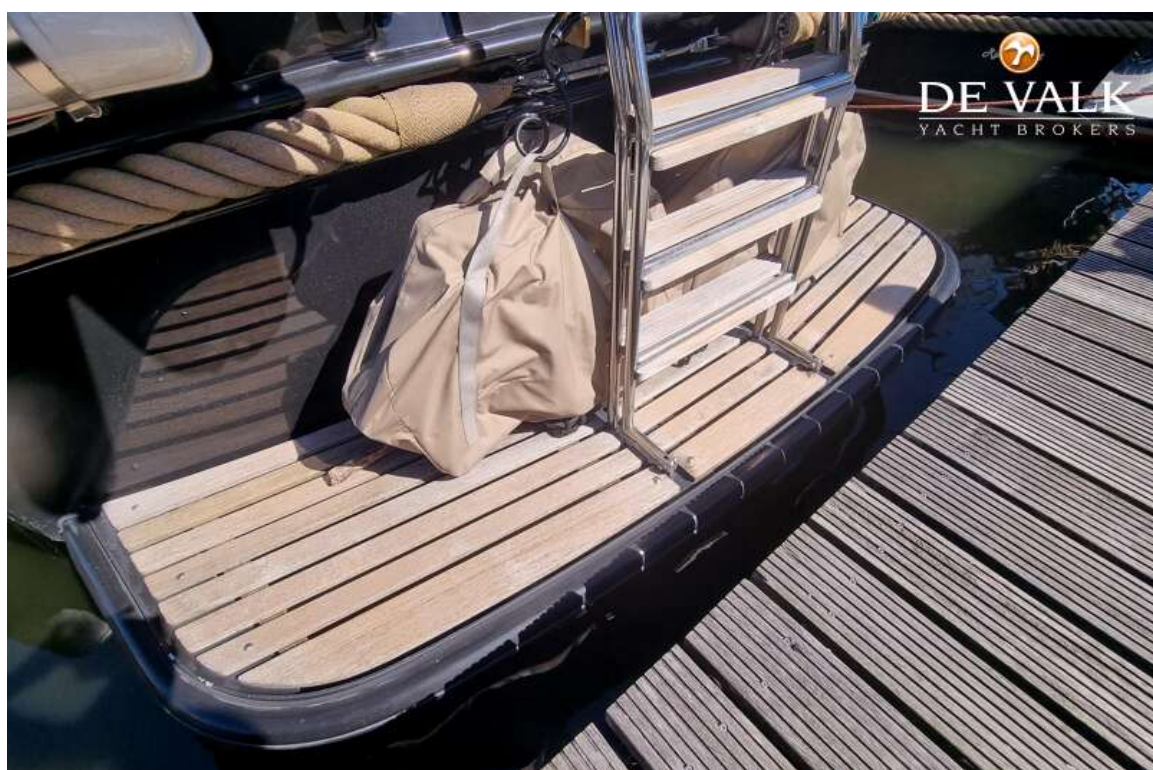
LINSSEN GRAND STURDY 430 AC TWIN



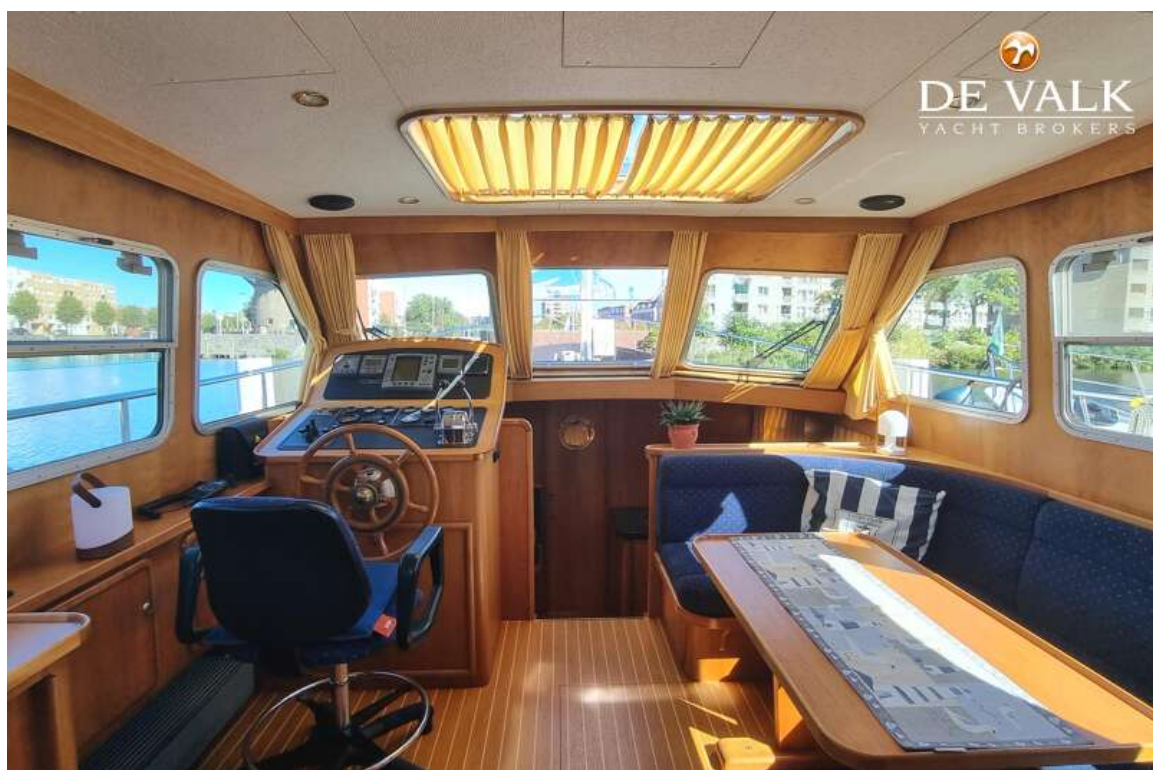
LINSSEN GRAND STURDY 430 AC TWIN



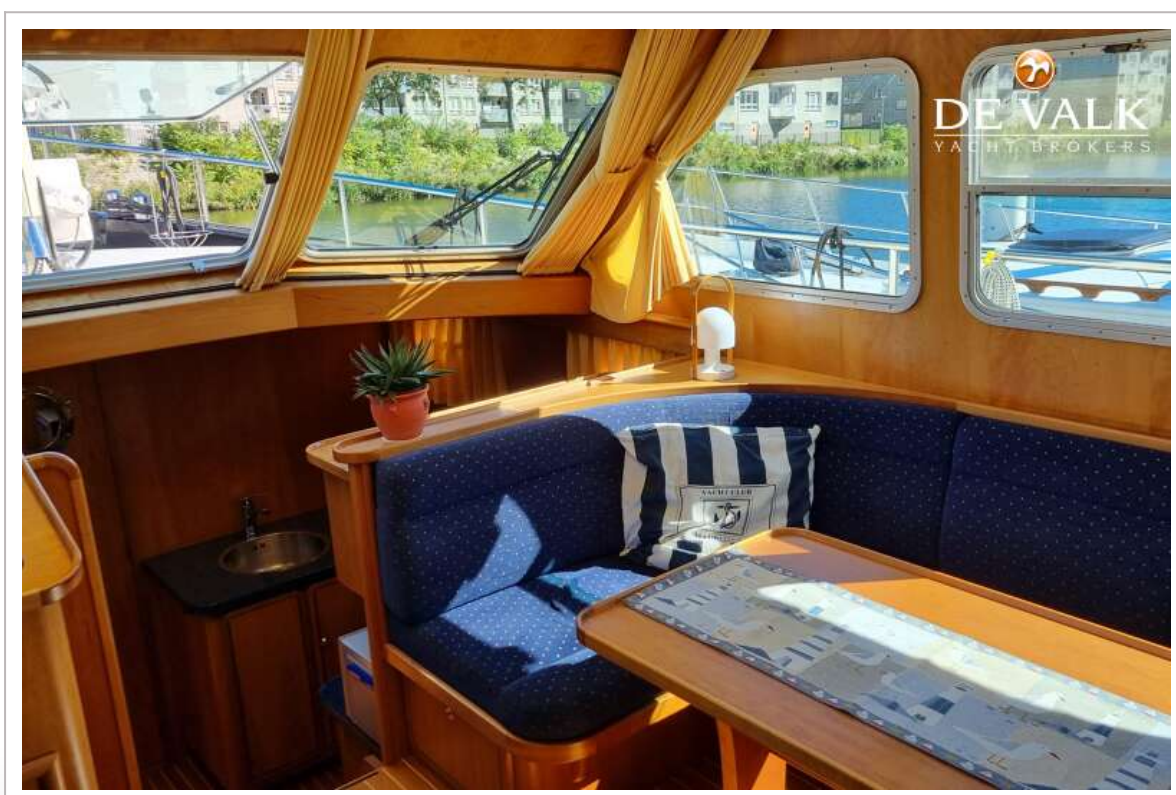
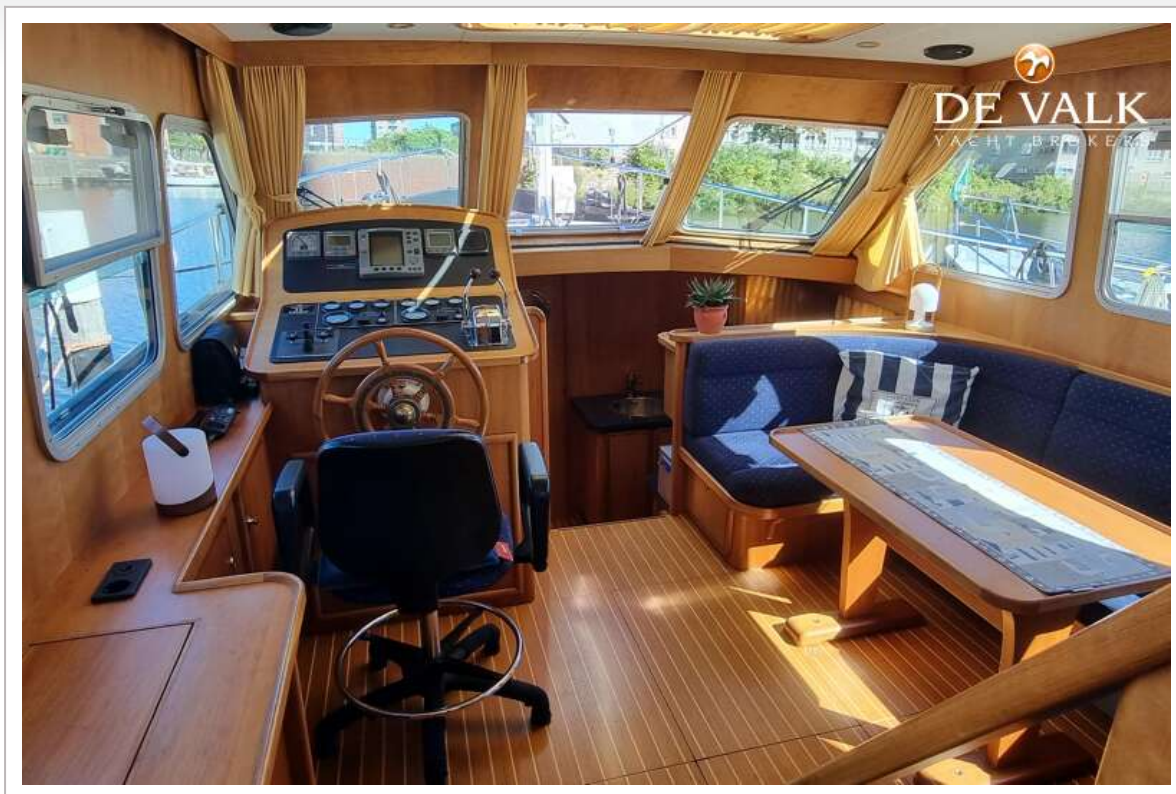
LINSSEN GRAND STURDY 430 AC TWIN



LINSSEN GRAND STURDY 430 AC TWIN



LINSSEN GRAND STURDY 430 AC TWIN



LINSSEN GRAND STURDY 430 AC TWIN



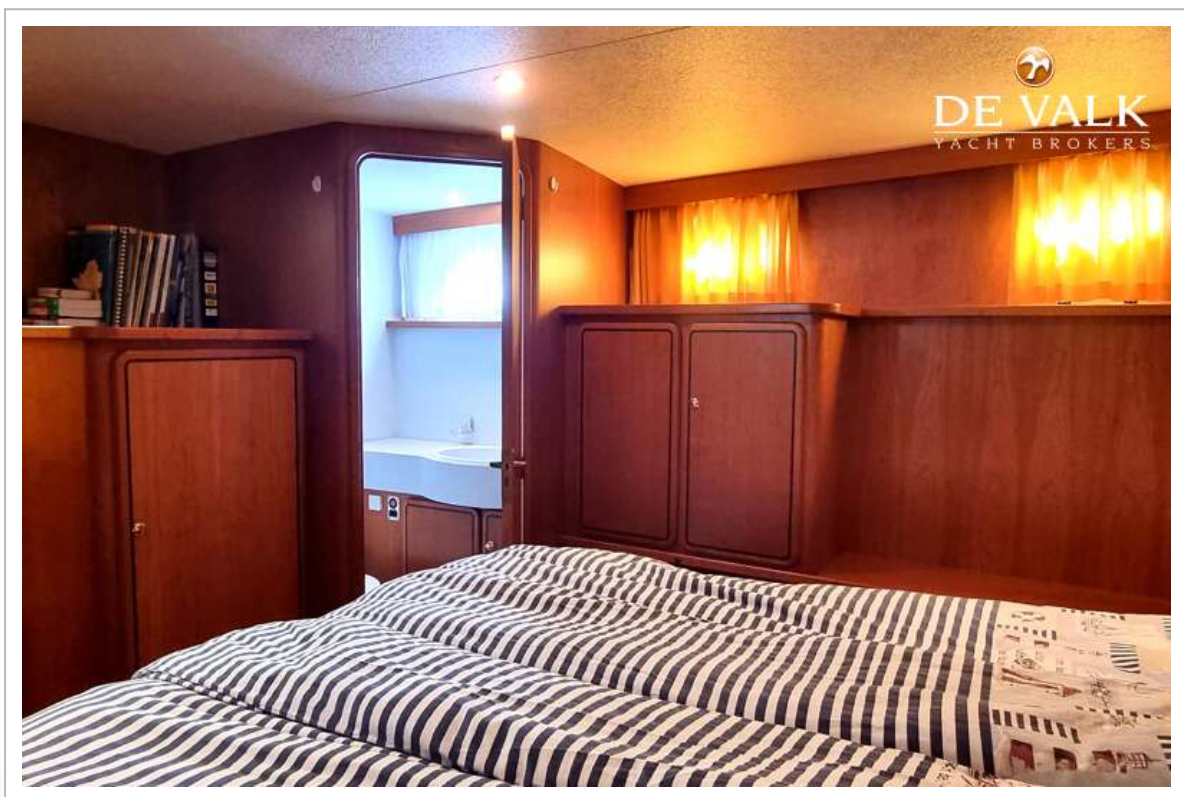
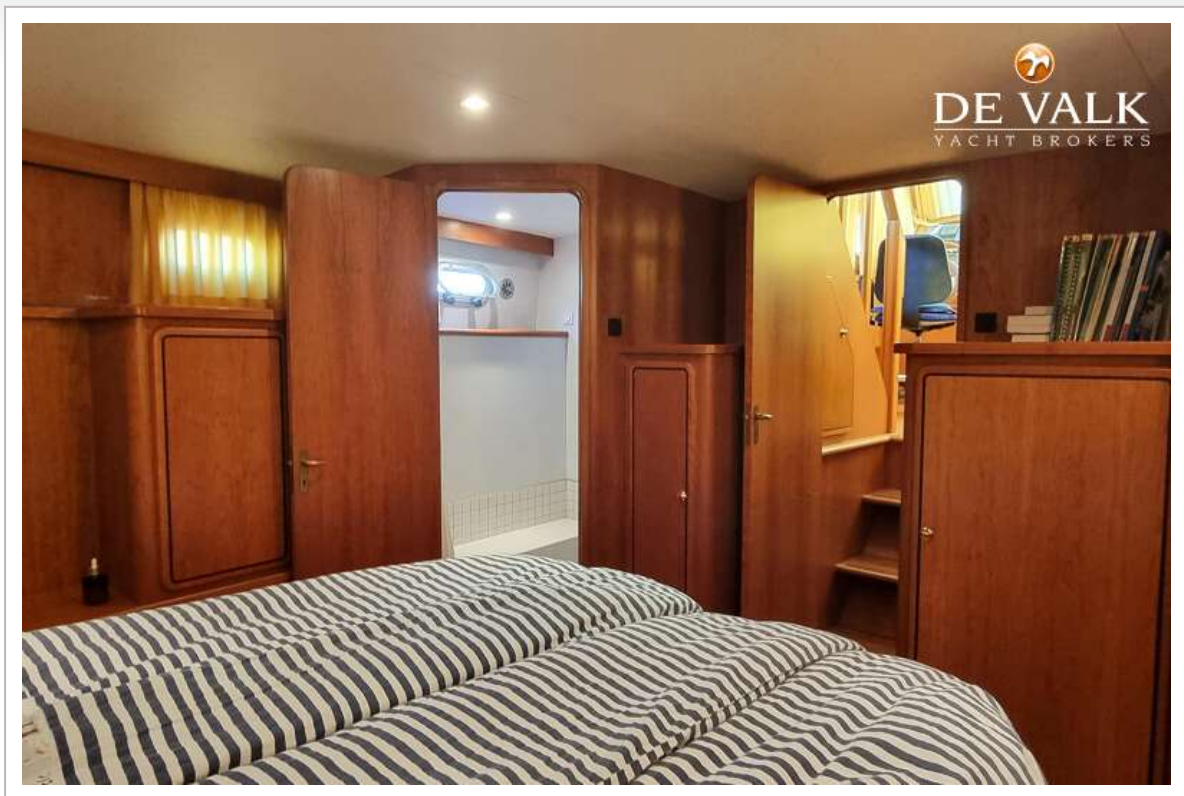
LINSSEN GRAND STURDY 430 AC TWIN



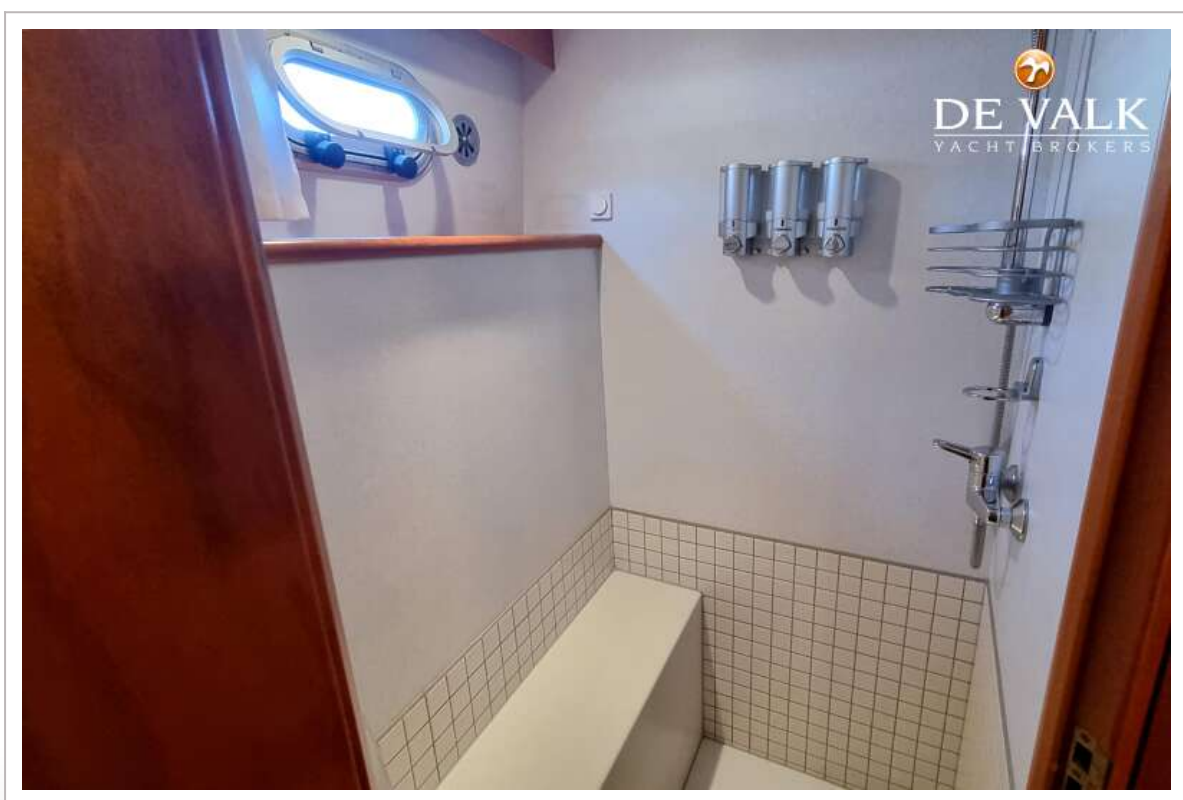
LINSSEN GRAND STURDY 430 AC TWIN



LINSSEN GRAND STURDY 430 AC TWIN



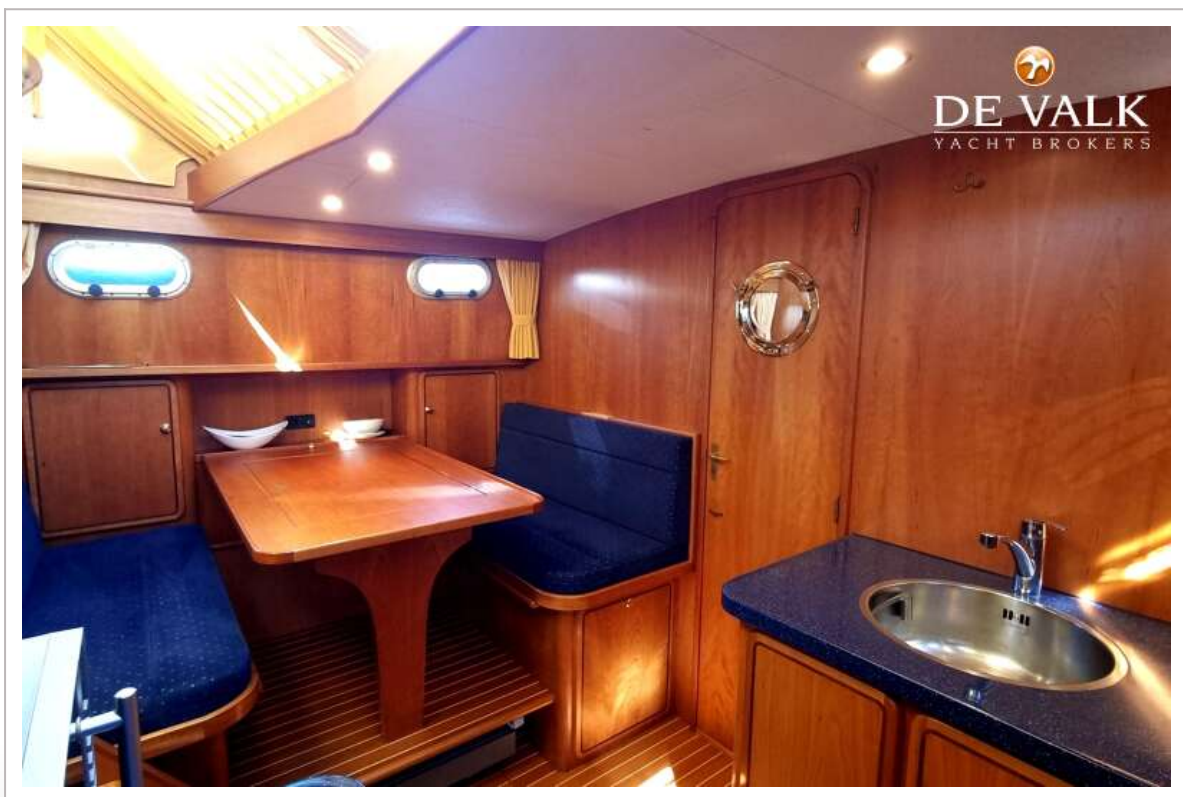
LINSSEN GRAND STURDY 430 AC TWIN



LINSSEN GRAND STURDY 430 AC TWIN



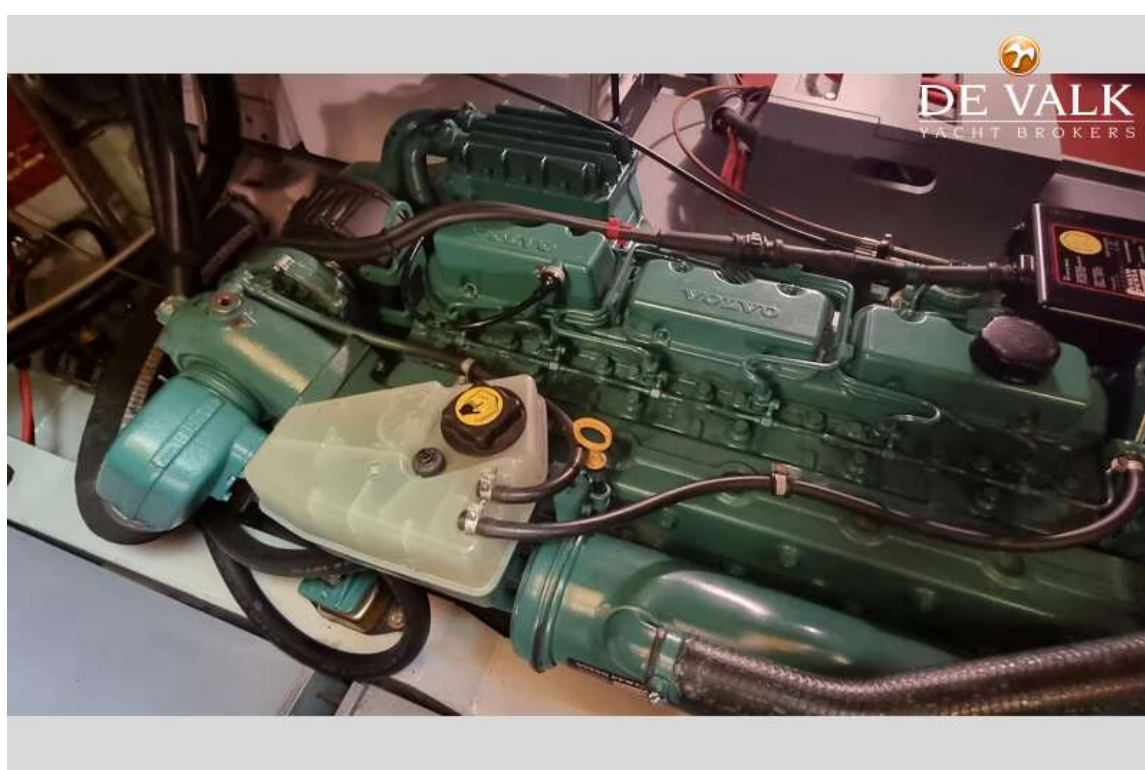
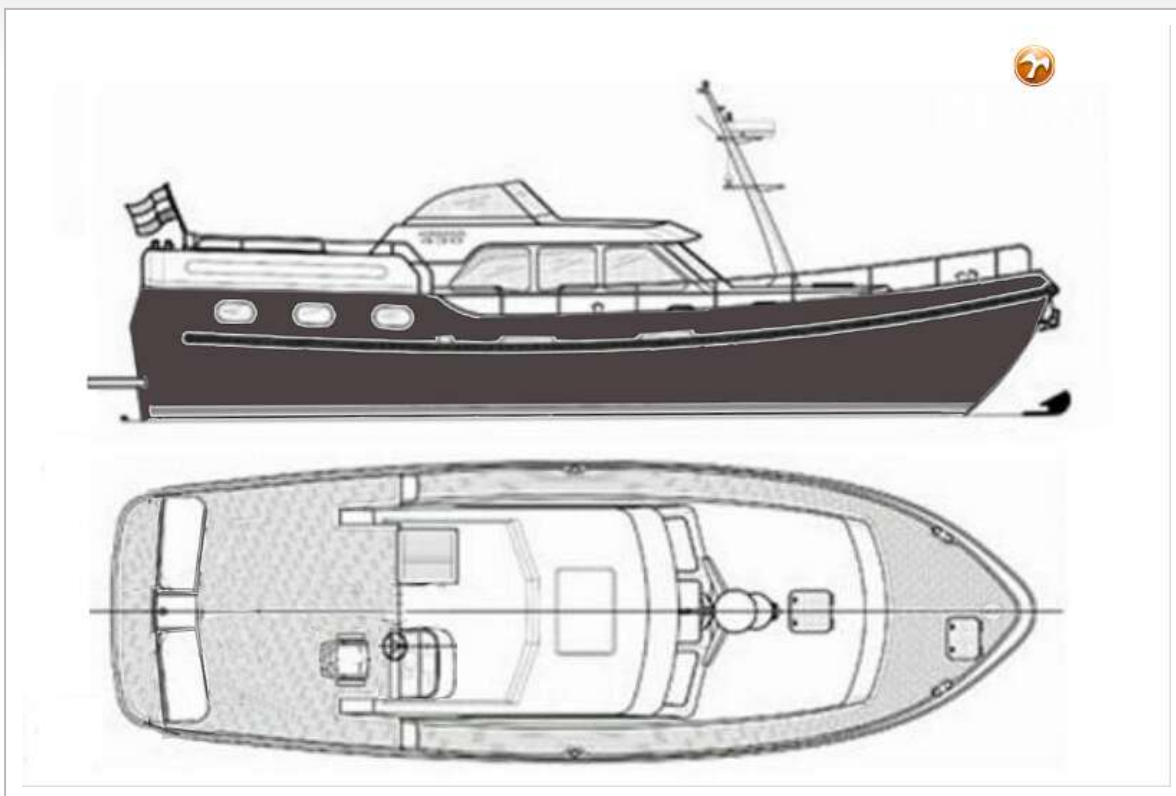
LINSSEN GRAND STURDY 430 AC TWIN



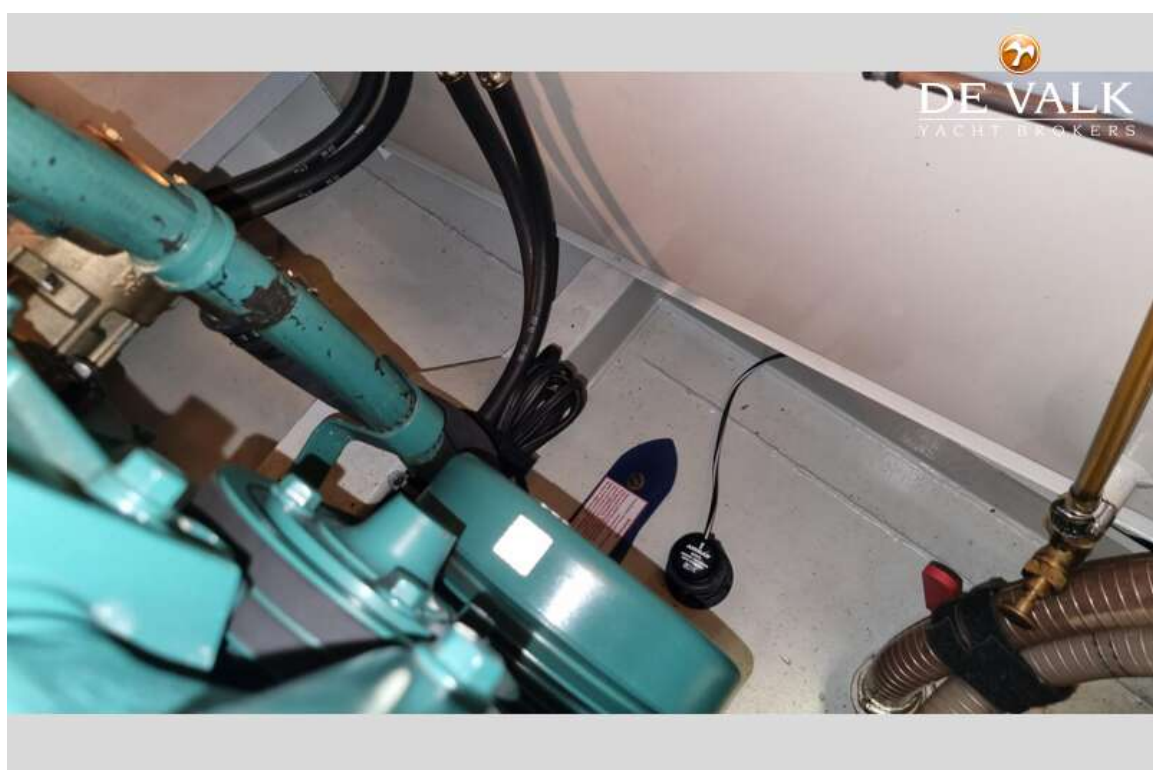
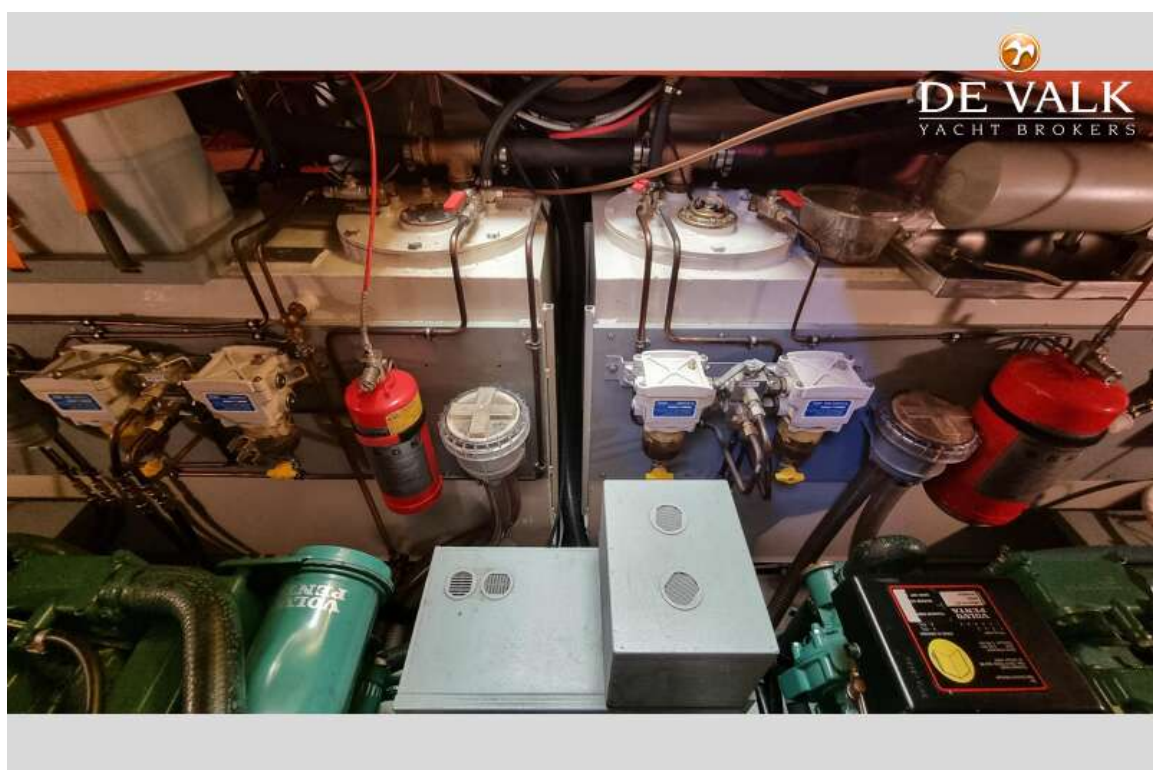
LINSSEN GRAND STURDY 430 AC TWIN



LINSSEN GRAND STURDY 430 AC TWIN



LINSSEN GRAND STURDY 430 AC TWIN



LINSSEN GRAND STURDY 430 AC TWIN

