



## SOUTHERN OCEAN 71



## BROKER'S COMMENTS

A wonderful long distance sailing yacht, a comfortable and safe Ocean 71ft Ketch, designed by Van de Stadt in the 60ties. Owned since 1998 by a renowned ocean regatta sailor who put her through an extensive refit in 2016 to a.o. modernise the navigation and sailing equipment and over the years continually maintained and upgraded her to the highest standard. The owner crossed the ocean many times short handed, easily reaching an average speed of 9kts during the whole crossing. She is in mint condition and ready for long passages with a new owner.

*Reinoud Bicker Caarten*

## SPECIFICATIONS

|                     |                         |                |                             |
|---------------------|-------------------------|----------------|-----------------------------|
| <b>Dimensions</b>   | 21.64 x 5.30 x 2.51 (m) | <b>Builder</b> | Southern Ocean Shipyard Ltd |
| <b>Built</b>        | 1972                    | <b>Cabins</b>  | 4                           |
| <b>Material</b>     | GRP                     | <b>Berths</b>  | 10                          |
| <b>Engine(s)</b>    | 1 x Perkins 6354 diesel | <b>Hp/Kw</b>   | 115.00 (hp), 84.64 (kw)     |
| <b>Asking price</b> | £ 365.000 (VAT Exempt)  | <b>Lying</b>   | at sales office             |

## CONTACT

|                     |   |                  |                    |
|---------------------|---|------------------|--------------------|
| <b>Sales office</b> | De Valk Portugal  | <b>Telephone</b> | +351 308 812321    |
| <b>Address</b>      | Edifício Administrativo - Ponta da Areia<br>8500 - 345 Portimão<br>PT | <b>E-mail</b>    | portugal@devalk.nl |

## DISCLAIMER

These particulars are given in good faith as supplied but cannot be guaranteed.



## GENERAL

|                            |                             |
|----------------------------|-----------------------------|
| Model                      | SOUTHERN OCEAN 71           |
| Type                       | sailing yacht               |
| LOA (m)                    | 21,64                       |
| LWL (m)                    | 18,07                       |
| Beam (m)                   | 5,30                        |
| Draft (m)                  | 2,51                        |
| Year built                 | 1972                        |
| Builder                    | Southern Ocean Shipyard Ltd |
| Country                    | United Kingdom              |
| Designer                   | E.G. van de Stadt           |
| Displacement (t)           | 34                          |
| Ballast (tonnes)           | lead in GRP 9.2             |
| Gross tonnage              | 47                          |
| Net tonnage                | 40.6                        |
| CE norm                    | A                           |
| Hull material              | GRP                         |
| Hull colour                | off-white                   |
| Hull thickness (mm)        | 25                          |
| Hull shape                 | S-bilged                    |
| Keel type                  | fin keel                    |
| Superstructure material    | GRP                         |
| Deck material              | GRP                         |
| Deck finish                | non-skid paint Awlgrip      |
| Superstructure deck finish | non-skid paint Awlgrip      |
| Cockpit deck finish        | teak                        |
| Antifouling (year)         | 2023                        |
| Dorades                    | stainless steel 2           |
| Window frame               | aluminium GEBO              |
| Window material            | tempered glass              |
| Portholes                  | brass 2x                    |



|                              |  |
|------------------------------|--|
| Fuel tank (litre)            | polyethylene 2x 950                          |
| Level indicator (fuel tank)  | yes  |
| Freshwater tank (litre)      | polyethylene 2x600L TekTank 2016, and 2x250L |
| Level indicator (freshwater) | yes  |
| Blackwater tank (litre)      | polyethylene 1x100L                          |
| Blackwater tank extraction   | pump   |
| Greywater tank (litre)       | polyethylene 1000L                           |
| Wheel steering               | Whitlock                                     |
| Outside helm position        | yes  |
| Emergency tiller             | yes  |

## ACCOMMODATION

|                     |   |
|---------------------|---|
| Cabins              | 4   |
| Berths              | 10  |
| Crew cabin          | 1   |
| Crew berths         | 4   |
| Floor               | Teak and                                  |
| Open cockpit        | yes                                       |
| Headroom saloon (m) | 2.05m                                     |
| Heating             | A/C reversed cycle                        |
| Air-conditioning    | reverse cycle airco Condaria              |
| Navigation center   | yes                                       |
| Chart table         | yes                                       |
| Aft Cabin           | Master cabin with ensuite bathroom        |
| Dinette             | yes                                       |
| Galley              | Seperate, midships portside               |
| Countertop          | stainless steel                           |
| Sink                | stainless steel                           |
| Cooker              | calor gas Force 10 4 burner and oven 2015 |
| Oven                | yes                                       |
| Extractor           | yes                                       |



|                         |   |
|-------------------------|---|
| Gas alarm               | yes   |
| Microwave               | yes   |
| Fridge                  | 1x Isotherm keel cooled 2016                  |
| Freezer                 | 2x Isotherm keel cooled 2016                  |
| Hot water system        | Calorifiers on engine and generator           |
| Water pressure system   | electrical 24V pressurised, Jabsco dual pumps |
| Manual and/or foot pump | yes   |
| Kettle                  | yes   |
| Owners cabin            | double bed + single bed                       |
| Bed length (m)          | 2.07m   |
| Wardrobe                | hanging and shelves                           |
| Bathroom                | en suite                                      |
| Toilet                  | en suite Sanimarin                            |
| Toilet system           | electric                                      |
| Wash basin              | in the bathroom                               |
| Shower                  | en suite                                      |
| Guest cabin 1           | bunk bed Portside                             |
| Bed length (m)          | 1,95m   |
| Wardrobe                | hanging and shelves Closet + overhead lockers |
| Bathroom                | shared  |
| Toilet                  | shared  |
| Toilet system           | electric Fresh and seawater flush             |
| Wash basin              | in the bathroom                               |
| Shower                  | shared  |
| Guest cabin 2           | single bed Starboard                          |
| Bed length (m)          | 1,90m   |
| Wardrobe                | hanging and shelves                           |
| Bathroom                | shared  |
| Guest cabin 3           | bunk bed Forward (crew cabin)                 |
| Bed length (m)          | 2,05m   |
| Wardrobe                | hanging/drawers/shelves                       |
| Bathroom                | yes   |



|               |                    |
|---------------|--------------------|
| Toilet        | separate           |
| Toilet system | electric Sanimarin |
| Wash basin    | yes                |
| Shower        | separate           |
| Crew cabin(s) | Forward cabin      |

## MACHINERY

|                          |  |
|--------------------------|--|
| No of engines            | 1  |
| Make                     | Perkins  |
| Type                     | 6354   |
| HP                       | 115  |
| kW                       | 84.64  |
| Fuel                     | diesel   |
| Year installed           | 2016   |
| Maximum speed (kn)       | 9  |
| Cruising speed (kn)      | 8  |
| Range (nm)               | 2000   |
| Engine hours             | 500  |
| Engine cooling system    | seawater   |
| Drive                    | shaft  |
| Engine controls          | electrical   |
| Gearbox                  | hydraulic Borg Warner  |
| Gearbox                  | hydraulic Borg Warner (rebuilt 1998) with aquadrive coupling |
| Exhaust                  | watercooled  |
| Propeller type           | feathering MaxProp   |
| Propeller blades         | 4 blades new 2016  |
| Propeller shaft material | stainless steel New 2016                                     |
| Shaft lubrication        | water  |
| Manual bilge pump        | 2x Whale Titans + 1 Whale pump in aft cockpit locker.        |
| Electric bilge pump      | Jabsco in engine room  |
| Bilge alarm              | 4x bilge alarm sensors, audible and visual                   |



|                                 |   |
|---------------------------------|---|
| <b>Electrical installation</b>  | 12/24/220V  |
| <b>Generator</b>                | Northern Lights 12Kw 110V AC                                      |
| <b>Running hours generator</b>  | 3000  |
| <b>Batteries</b>                | 12x 2V Varta lead/acid cells giving 720Amps at 24V DC             |
| <b>Start battery</b>            | 2x 12V DC   |
| <b>Generator battery</b>        | 1x 12V DC   |
| <b>Battery monitor</b>          | Battman   |
| <b>Battery charger</b>          | Mastervolt 100 Amp + smart charger/alternator on engine<br>100Amp |
| <b>Inverter</b>                 | Mastervolt  |
| <b>Battery charger/inverter</b> | yes   |
| <b>Diode battery combiners</b>  | yes   |
| <b>Shorepower</b>               | with cable 220V AC or 110V AC with transformer on board           |
| <b>Watermaker</b>               | Aquafresh   |

## NAVIGATION

|                          |  |
|--------------------------|--|
| <b>Compass</b>           | BPSC Solent  |
| <b>Electric compass</b>  | 3x   |
| <b>Depth sounder/log</b> | 2. Furuno FCV-612 and Autohelm new 2016                          |
| <b>Log</b>               | yes  |
| <b>Windset</b>           | Raymarine  |
| <b>Fish finder</b>       | Furuno FCV-612   |
| <b>VHF</b>               | I com IC M59   |
| <b>VHF handheld</b>      | I com  |
| <b>Autopilot</b>         | 2x Autohelm 7000, 1x linear to quadrant 1x Whitlock motor direct |
| <b>Radar</b>             | Furuno GA AS 24nm daylight ARPA                                  |
| <b>GPS</b>               | Furuno GPS Navigator   |
| <b>Plotter</b>           | 2x Raymarine C120 and 1x Raymarine Hybrid touch                  |
| <b>Weather receiver</b>  | Furuno D Fax207  |
| <b>AIS receiver</b>      | Raymarine  |
| <b>Radio receiver</b>    | SEA 235 HF SSB Radiotelephone                                    |



|             |                               |
|-------------|-------------------------------|
| Transmitter | SEA 235 HF SSB Radiotelephone |
| EPIRB       | TRON 60 GPS                   |

## EQUIPMENT

|                            |  |
|----------------------------|--|
| Sprayhood                  | 2x                                       |
| Sun awning                 | By Antigua sails, sunbrella fabric       |
| Cockpit cushions           | Sunbrella closed cell foam               |
| Boarding ladder            | 2x                                       |
| Anchor                     | 1x Spade 60kg new 2016                   |
| Anchor chain               | 12mm galvanized steel Lloyds tested      |
| Anchor 2                   | CQR Plough 60kg from 1998                |
| Windlass                   | electrical Lewmar 3000                   |
| Capstan                    | yes                                      |
| Deck wash                  | yes                                      |
| Dinghy                     | rigid inflatable Avon 3,10m              |
| Outboard                   | Mariner 2,5HP                            |
| Sea railing                | stainless steel Stanchions and 1x19 wire |
| Grab rail (superstructure) | teak                                     |
| Railing side opening gates | 2x                                       |
| Pushpit                    | yes                                      |
| Pulpit                     | yes                                      |
| Life raft                  | container Viking                         |
| Life raft (pers)           | 6 pax                                    |
| Lifejackets                | 6x Viking                                |
| Lifebuoy                   | 2x horseshoe                             |
| Horn                       | air pressure                             |
| Radar reflector            | Visiball                                 |
| Fenders                    | yes                                      |
| Mooring lines              | yes                                      |
| Spare parts                | yes                                      |
| Tools                      | yes                                      |





|                             |                                 |
|-----------------------------|---------------------------------|
| TV                          | yes                             |
| Surround Sound System       | BOSE                            |
| Speakers in salon           | Surround sound                  |
| Fire extinguisher           | 2x powder                       |
| Extinguisher in engine room | HALON remote operation          |
| Auto extinguisher system    | With smoke alarm in engine room |

## RIGGING

|                         |   |
|-------------------------|---|
| Standing rigging        | wire 1x19 stainless steel all renewed 2016              |
| Brand mast              | John Powell   |
| Material mast           | aluminium coated  |
| Spreaders               | 2x2 on main 1x2 on mizzen                               |
| Keel stepped mast       | yes   |
| Mainsail cover          | Bag, Bank sails   |
| Battcars                | Frederiksen   |
| Fully battened mainsail | Banks sails 1998  |
| Cutterstay              | on reckmann hydraulic furler from 2016 Banks sails 1998 |
| Main staysail           | on reckmann furler from 2016 Banks sails 1998           |
| Mizzen                  | Fully battened Banks sails 1998                         |
| Mizzen sailcover        | Bag, Banks sails  |
| Mizzen staysail         | Sanders sails 2004                                      |
| Jib                     | yes   |
| Genoa                   | yes   |
| A-symmetric spi         | Banks sails 1998  |
| Yankee                  | Banks sails   |
| Trysail                 | Sanders sails 2004                                      |
| Stormjib                | Sanders sails 2004                                      |
| Reefing System          | slabreefing With electric Andersen 55ST on deck         |
| Backstay adjuster       | hydraulic Sailtec                                       |
| Boomvang                | hydraulic Reckmann                                      |
| Primary sheet winch     | Electric 2x Andersen 68ST                               |



|                         |  |
|-------------------------|--|
| Secondary sheet winch   | 2x Andersen 58 ST                                      |
| Genoa sheetwinches      | 2x Andersen 52 ST                                      |
| Halyard winches         | Lewmar   |
| Reefing winch           | Andersen 55ST electric                                 |
| Multifunctional winches | 2x Andersen 46ST                                       |
| Spi-pole                | aluminium 2x   |
| Isolated backstay       | yes  |
| Extra info              | All running rigging renewed 2016, annually maintained. |



# SOUTHERN OCEAN 71

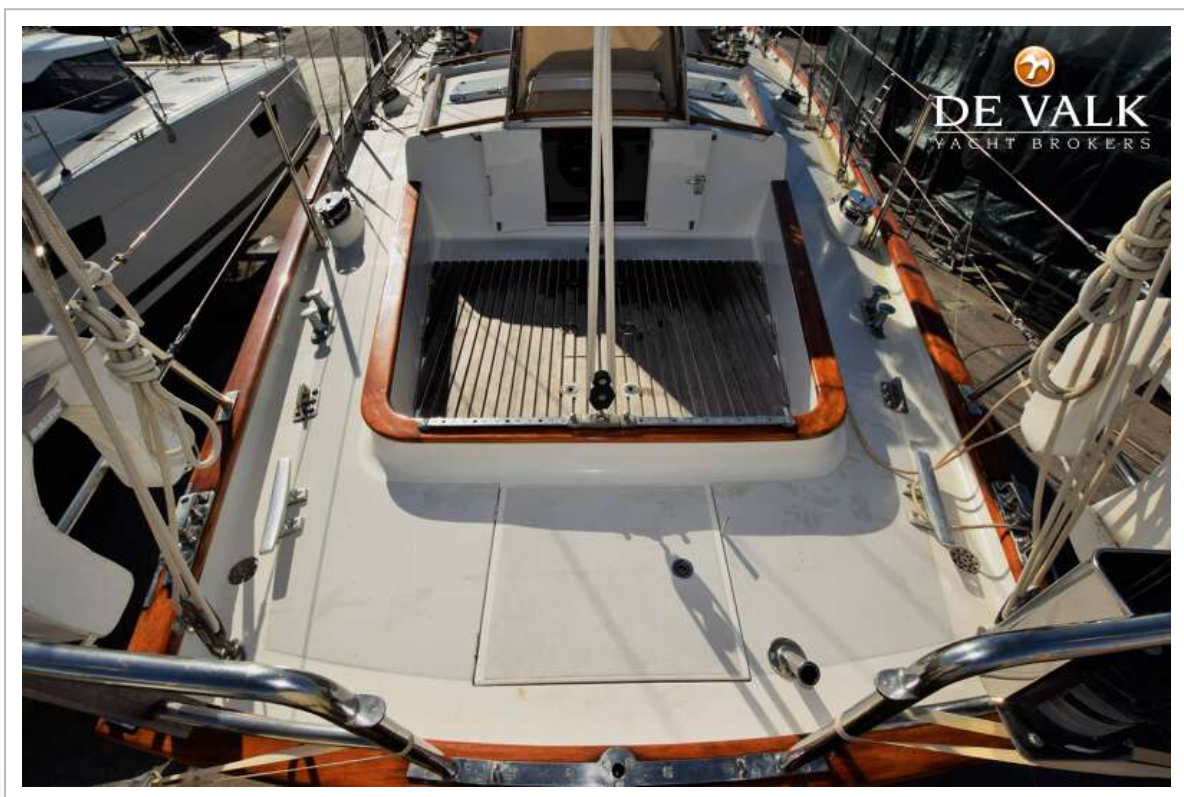






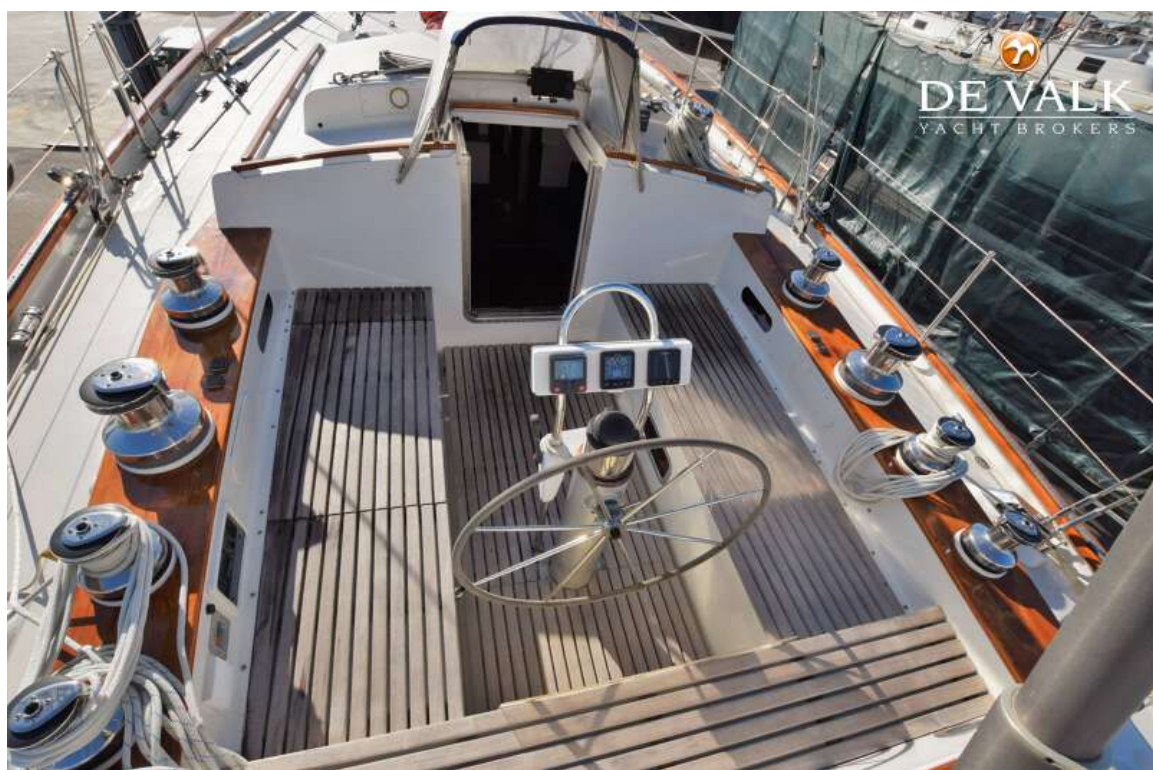
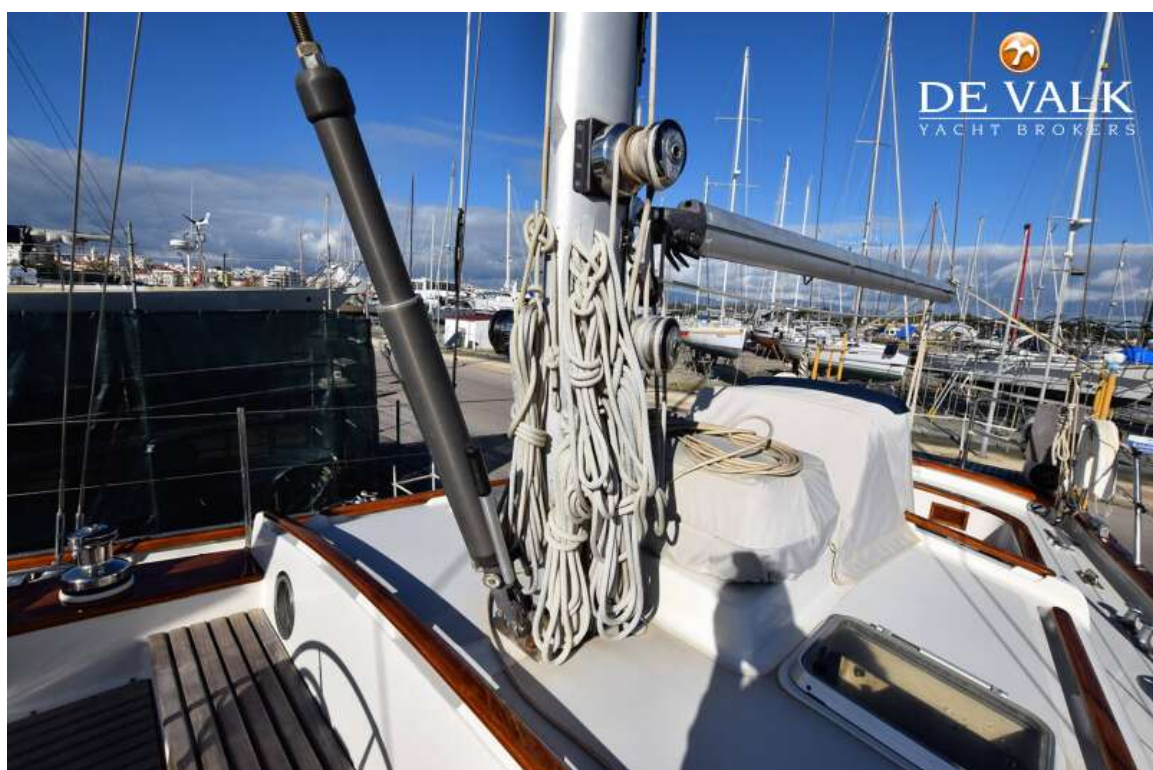




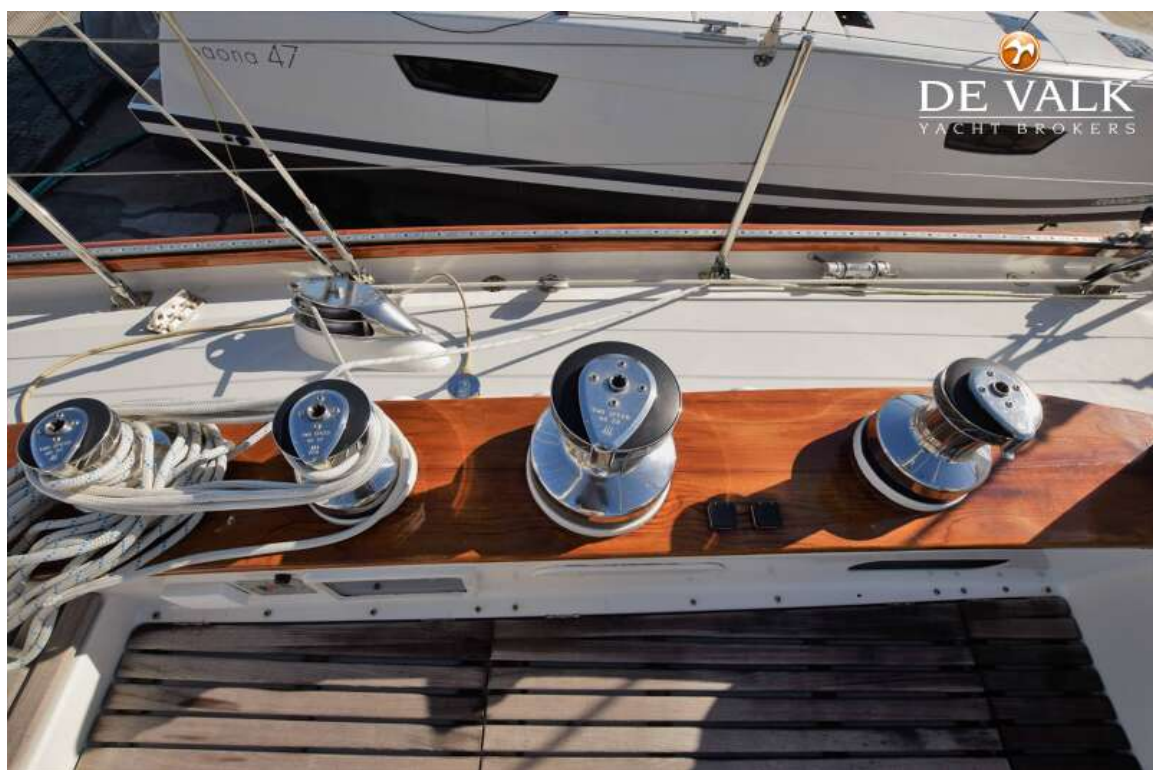




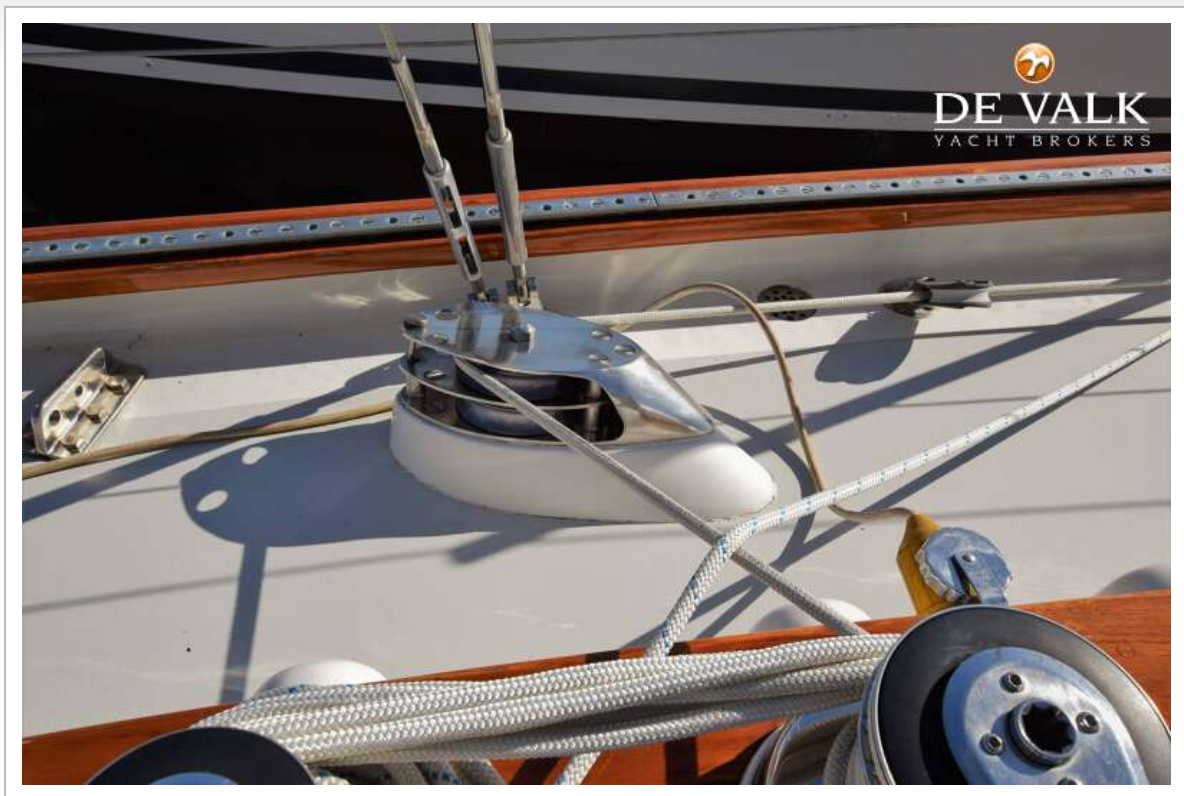
# SOUTHERN OCEAN 71







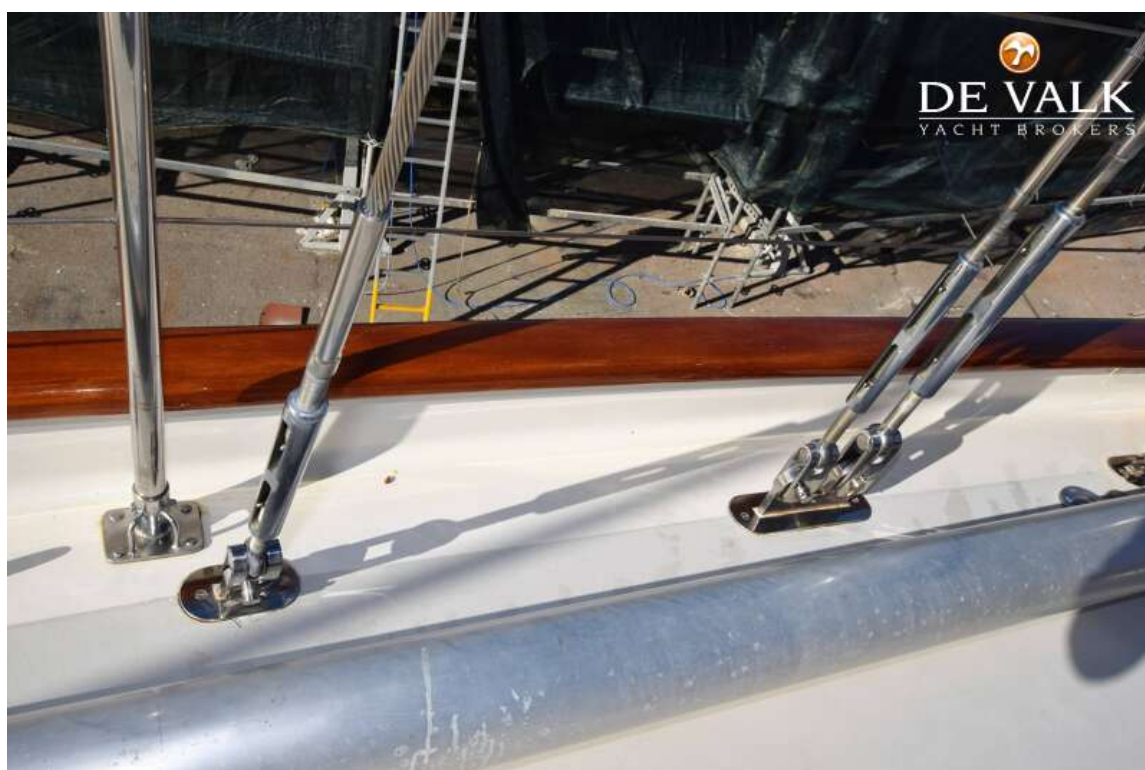




# SOUTHERN OCEAN 71





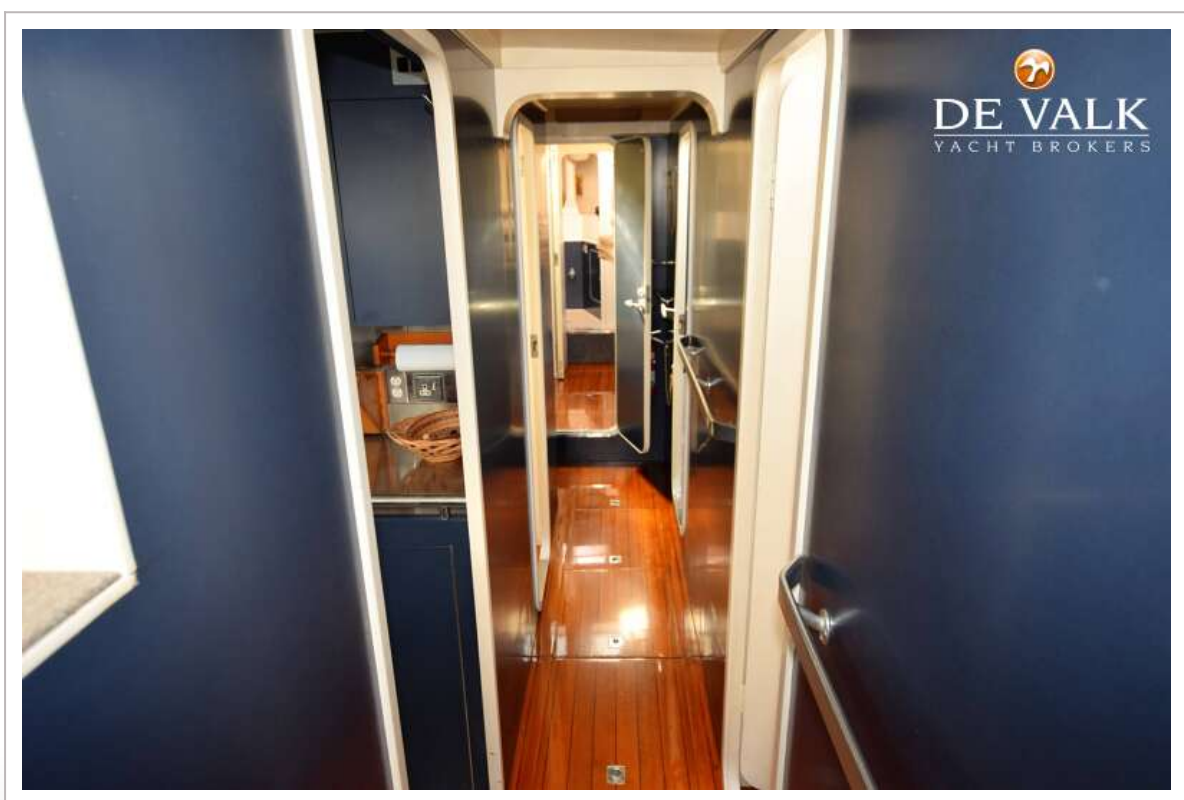


# SOUTHERN OCEAN 71





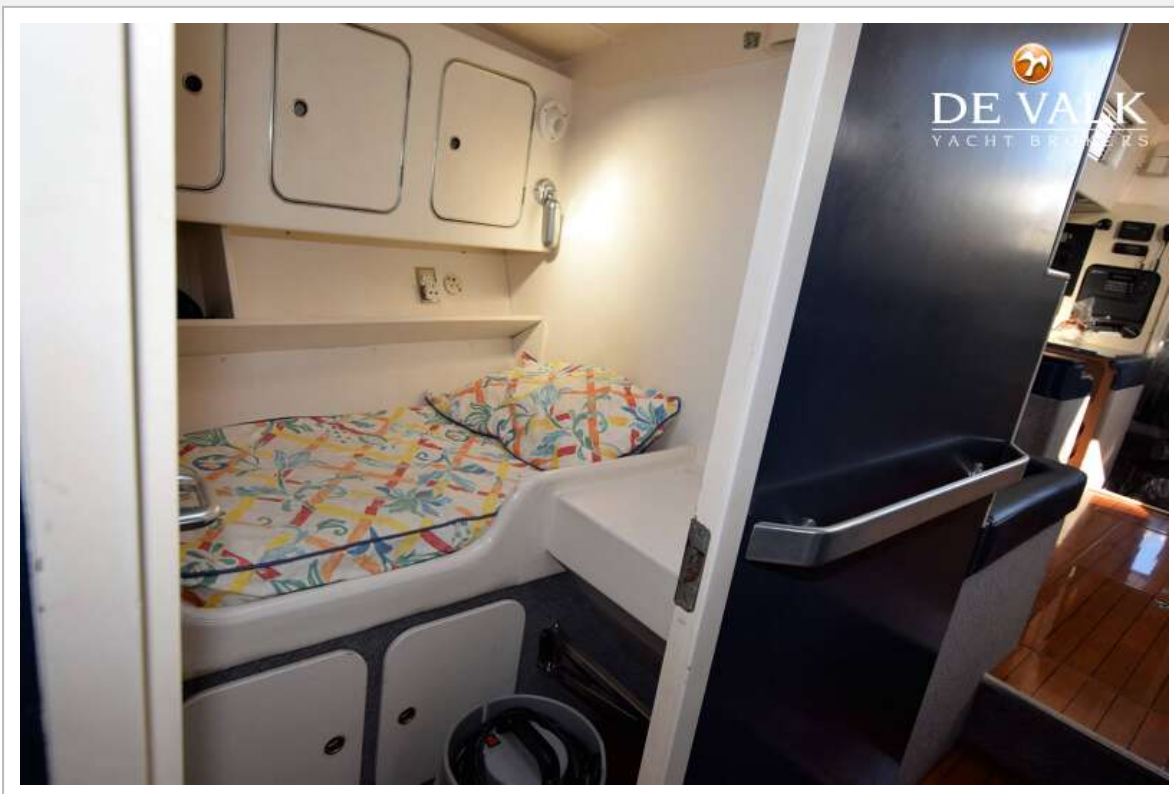
# SOUTHERN OCEAN 71



# SOUTHERN OCEAN 71

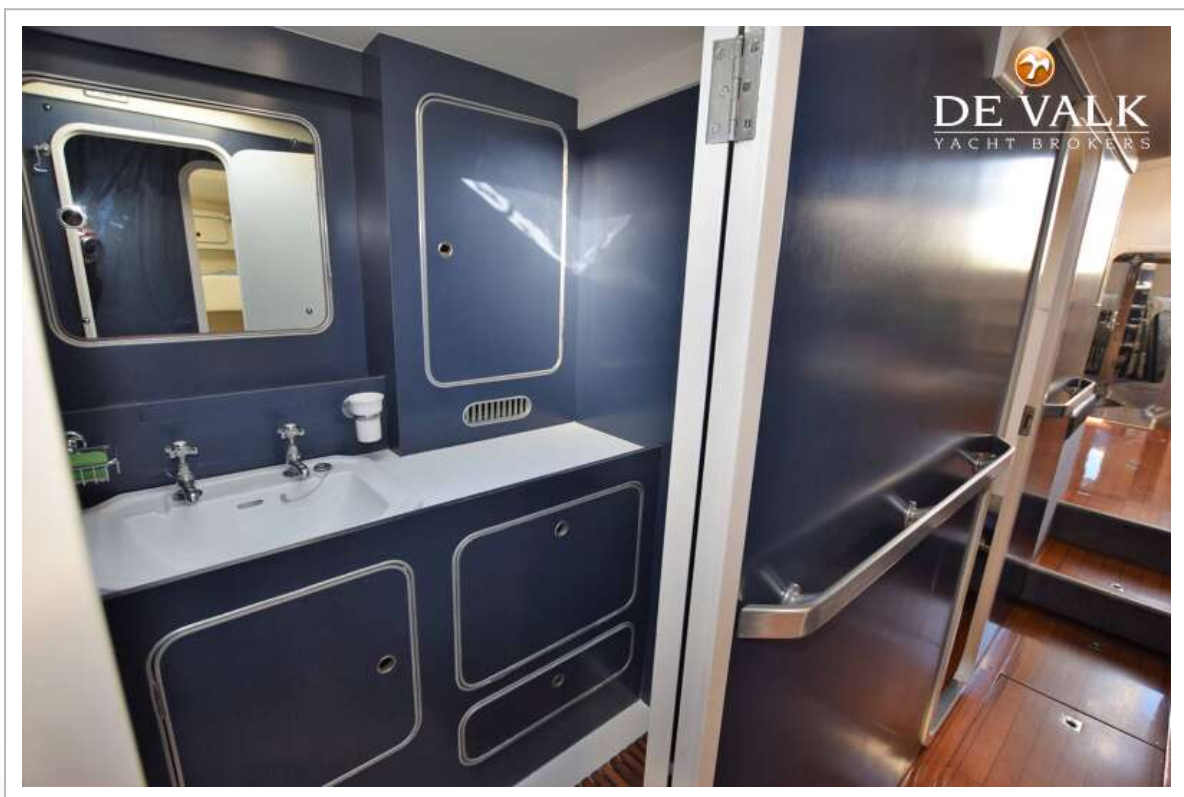
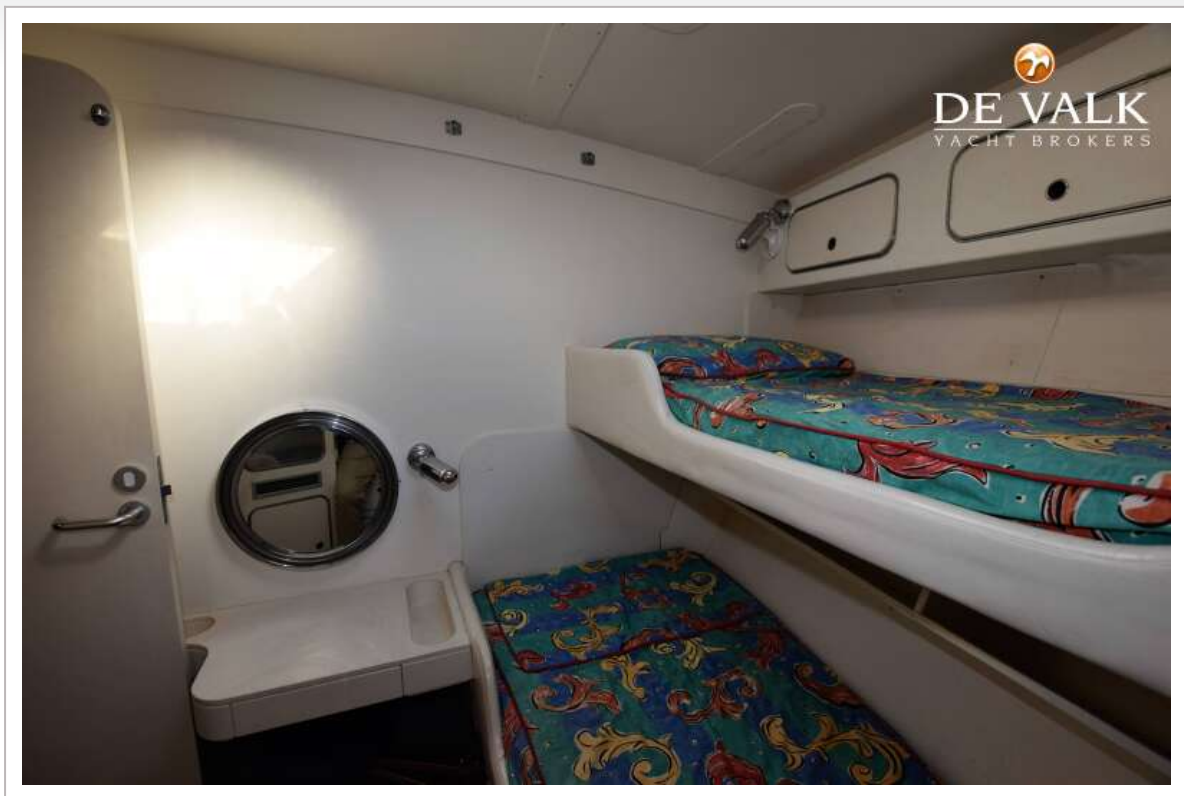


# SOUTHERN OCEAN 71



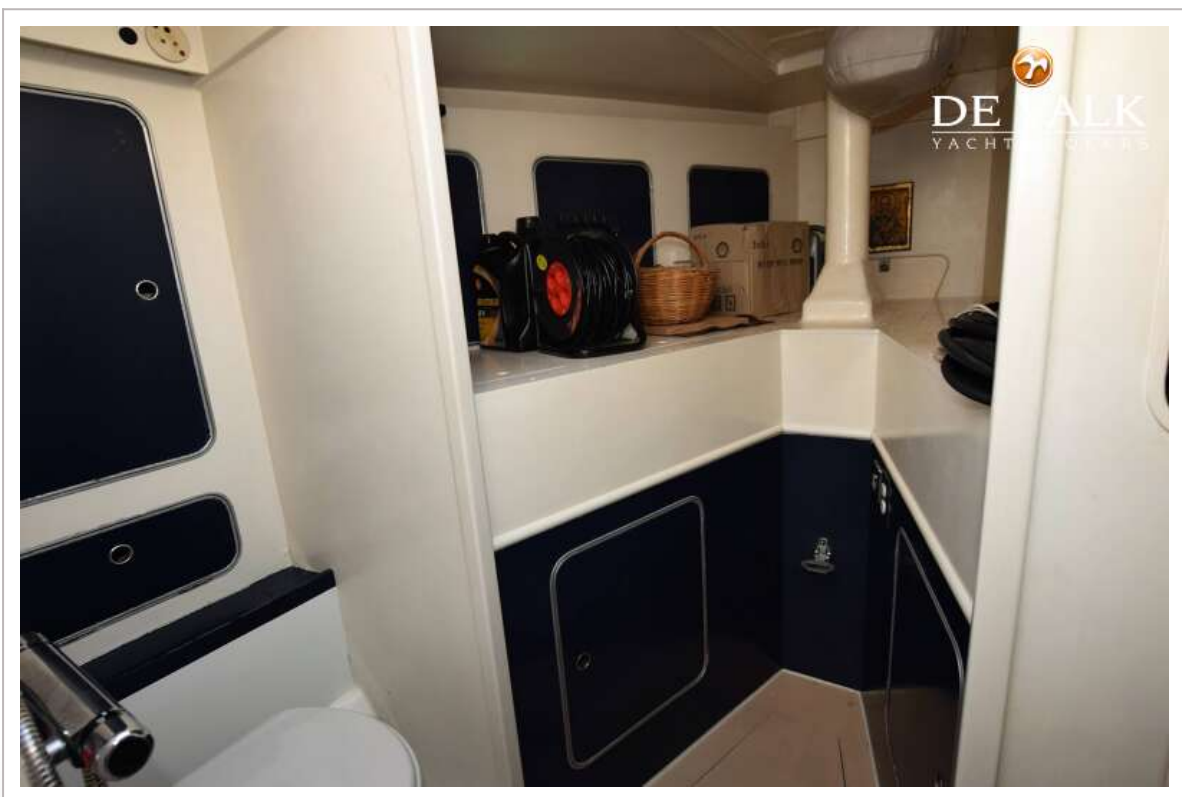


# SOUTHERN OCEAN 71

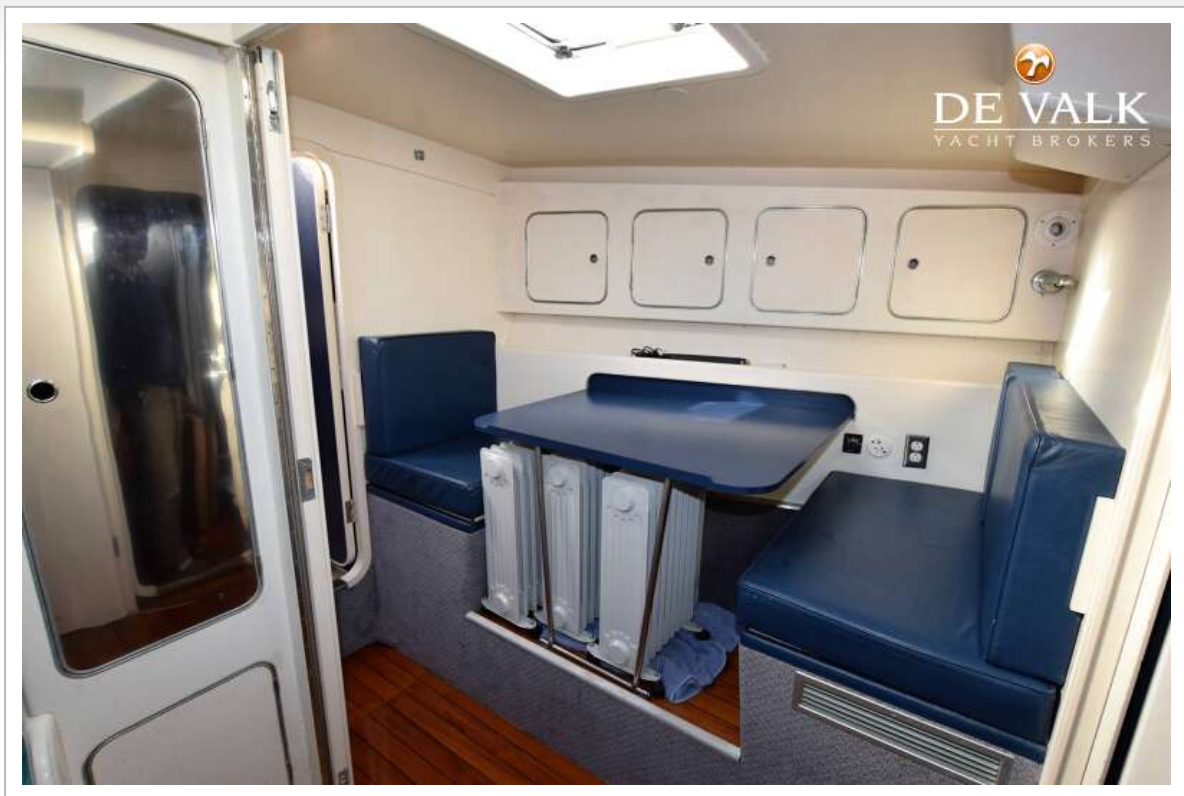




# SOUTHERN OCEAN 71



# SOUTHERN OCEAN 71





# SOUTHERN OCEAN 71







