



OYSTER 53 HP



OYSTER 53 HP

BROKER'S COMMENTS

The Oyster 53, designer Rob Humphreys produced a relatively heavy hull (22,250kg) showing the potential for generating serious power. She produces a sensation of momentum, not the same as simply going fast, of a powerful sailing machine settling down to the task of converting wind energy into effortless, quiet and forward progress. She brings together seaworthiness, high style, comfort & security. The big circular dinette is impressive. The pilothouse arrangement includes opening windows with great ventilation. Over € 150,000 in refits and overhauls received.

Jörg Hellmich

SPECIFICATIONS

Dimensions	16.15 x 4.80 x 2.30 (m)	Builder	Oyster Marine LTD
Built	1987	Cabins	3
Material	GRP	Berths	6
Engine(s)	1 x Perkins 4236 diesel	Hp/Kw	80.00 (hp), 58.88 (kw)
Asking price	sold (VAT)	Lying	at sales office

CONTACT

Sales office	De Valk Almeria	Telephone	+34 950 497 825
Address	Puerto de Almerimar Darsena de la Batea Almerimar ES	E-mail	almeria@devalk.nl

DISCLAIMER

These particulars are given in good faith as supplied but cannot be guaranteed.



OYSTER 53 HP

GENERAL

Model	OYSTER 53 HP
Type	sailing yacht
LOA (m)	16,15
LWL (m)	13,89
Beam (m)	4,80
Draft (m)	2,30
Air draft (m)	23,00
Headroom (m)	2,00
Year built	1987
Launched	1988
Builder	Oyster Marine LTD
Country	United Kingdom
Designer	Holman & Pye
Displacement (t)	26
Ballast (tonnes)	cast iron and lead 8,5
Gross tonnage	18,5
CE norm	NA
Hull material	GRP
Hull colour	grey Repainted 2019
Hull shape	V-shaped hull
Keel type	fin keel
Superstructure material	GRP
Deck material	GRP White
Deck finish	teak
Superstructure deck finish	teak
Cockpit deck finish	teak
Antifouling (year)	2023
Dorades	yes
Window frame	aluminium
Window material	perspex



OYSTER 53 HP

Deckhatch	7 hatches (4 new hatches)
Fuel tank (litre)	GRP 700
Level indicator (fuel tank)	Dipstick
Freshwater tank (litre)	GRP 1.600 in 2 tanks
Level indicator (freshwater)	Dipstick
Blackwater tank (litre)	polyethylene 100
Blackwater tank extraction	deck extraction + uw line
Wheel steering	cable steering With hydraulic assist
Outside helm position	cable steering With hydraulic assist
Emergency tiller	yes
More info on hull	Hull repainted in 2019
Extra info	All sea cocks & skin fittings new 2021
Extra info	Full osmosis preventive treatment (multiple epoxy coating) 2019
Extra info	Teak partially re-caulked

ACCOMMODATION

Cabins	3
Berths	6
Interior	teak Classic, warm
Layout	3 Cabins
Floor	teak
Deck saloon	yes
Headroom saloon (m)	2,00
Heating	central hot water Webasto Hot air with radiators & blowers 220V (2016)
Heating 2	diesel ducted hot air Planner 44 (2017)
Air-conditioning	single cycle airco Cruisair (New 2019) for cains and saloon
Chart table	yes
Aft Cabin	Owners cabin
Galley	Long shape
Countertop	corian



OYSTER 53 HP

Sink	stainless steel Double
Cooker	calor gas Force 10 (3 burner) 2010
Oven	Force 10 (2010)
Gas alarm	yes
Microwave/oven combi	Samsung Combi (2010)
Fridge	2 units & power sources
Freezer	(new compressor)
Hot water system	220V + engine 30L. Boiler (2016)
Water pressure system	electrical
Manual and/or foot pump	Salt & fresh water
Hot water tap	yes
Coffee maker	yes
Crockery	yes
Owners cabin	Aft
Bed length (m)	1,96 x 1,40
Wardrobe	hanging/drawers/shelves
Toilet	en suite
Toilet system	manual Blakes
Wash basin	at the toilet
Shower	en suite
Guest cabin 1	v-bed
Bed length (m)	2,00 x 1,40
Wardrobe	hanging/drawers/shelves
Toilet	shared
Toilet system	manual Blakes
Wash basin	at the toilet
Shower	shared
Guest cabin 2	bunk bed Double
Bed length (m)	1,98 x 0,70
Wardrobe	hanging/drawers/shelves
Washing machine	Kenny Euronova 1000F 3,5 kg (2012)
Central vacuum cleaner	yes



Extra info

All interior lighting LED (Spots) 2012

Extra info

New upholstery (2021)

MACHINERY

No of engines

1

Make

Perkins

Type

4236

HP

80

kW

58.88

Fuel

diesel

Year installed

1987

Year of overhaul

Injector check in 2019

Maximum speed (kn)

8,9

Cruising speed (kn)

7

Consumption (l/hr)

4

Range (nm)

1000

Engine hours

4136

Engine cooling system

freshwater heat exchanger New 2021

Drive

shaft

Shaft seal

yes

Engine controls

hydraulic

Gearbox

hydraulic

Bowthruster

electric Sidepower SE 130 kg (2013)

Propeller type

folding Maxprop & rope cutter

Propeller blades

3

Propeller shaft material

stainless steel

Shaft lubrication

water

Manual bilge pump

yes

Electric bilge pump

yes

Electrical installation

12V System

Generator

dry exhaust Onan MDKBL / 7 kWh (overhauled 2020)



Running hours generator	7147
Start battery	1 x 12V / 55 Ah Red Top
Service battery	4 x 12V / 250 Ah Gel (2020)
Generator battery	1 x 12V / 55 AH red top
Bowthruster battery	2 x 12V / 55 Ah yellow top
Battery monitor	Voltmeter
Battery charger/inverter	Mastervolt 2000/100
Wind generator	Silent wind generator (2014)
Solar panel	2 x 90W (12 & 220V) new 2015
Shorepower	with cable 230V
Watermaker	Seafresh (1999) 70L. / hr
Extra info	New engine mounts (2021)
Extra info	2 blade fix spare prop

NAVIGATION

Compass	Sestral moore (to be fitted)
Depth sounder/log	Raymarine i70 (2012)
Windset	Raymarine i70 (2012)
VHF	Raymarine 240E (2012)
VHF handheld	Cobra
Autopilot	2 x Raymarine 6000 hydr (2009) & selector Ap1/Ap2 (2020)
Wind vane steering install.	Hydrovane (2019)
Rudder angle indicator	Raymarine i70
GPS	Raymarine E7 (2015)
Plotter/GPS	2 x Raymarine E7 Hybrid Touch (2015)
Radar/GPS/plotter	Raymarine E9 (2019)
Weather receiver	ICom Weatherfax
Navtex	ICom
Transmitter	SSB iCom M600
EPIRB	Satelite
Navigation lights	LED



EQUIPMENT

Sprayhood	New 2012
Cockpit cover	Full enclosure (2021)
Bimini	New with new SS frame (2021)
Sun awning	From boom
Winter cover	Full boat winter cover Sea rails
Cockpit cushions	New 2021
Cockpit table	yes
Boarding ladder	stainless steel
Deck shower	yes
Anchor	Rocna 120 lbs (2013)
Anchor chain	100m
Anchor 2	CQR Plough 75 lbs (2007) + Bruce 20kg (2007)
Windlass	electrical Francis Marine 1500 VR
Dinghy	Zodiac (2020)
Outboard	Yamaha 5 HP - 2 stroke
Outboard support	yes
Davits	stainless steel
Davits controls	manual
Sea railing	wire
Grab rail (superstructure)	teak
Railing side opening gates	yes
Pushpit	yes
Pulpit	yes
Life raft	valise (or bag)
Lifejackets	yes
Safety harness	yes
Lifebuoy	Lifering
Safety lines on deck	yes
Clearview window	yes
Horn	yes



Fenders	yes
Mooring lines	yes
Spare parts	yes
Tools	yes
TV	Samsung 32" (2018)
Satellite	Nasa Pro: Sailor Thrane & Thrane 33 (2012)
Radio-cd player	Pioneer (2016)
DVD player	Blu-Ray Samsung (2012)
Cockpit speakers	yes
Speakers in salon	yes
Speakers in cabin	yes
Clock - barometer	yes
Fire extinguisher	yes
Extinguisher in engine room	yes
Extra info	Air compressor (for diving)

RIGGING

Rigging	sloop
Standing rigging	wire New 2019
Brand mast	Z-Spar
Material mast	aluminium coated New paint in Oyster white 2019 (incl. boom)
Spreaders	1 set
Mainsail	Tiradial 58m ² (2018) + Hyde 58m ² (2012)
Cutterstay	Hyde cutterstay 25m ² (2012)
Jib	North jib 16m ² (2007)
Genoa I	Hyde 72m ² (2012)
Genoa II	63m ² (2018)
Genoa furler	Profurl
Cutter furler	Profurl
Code Zero	(2007)
Spinnaker	North tiradial + snuffer (2007)



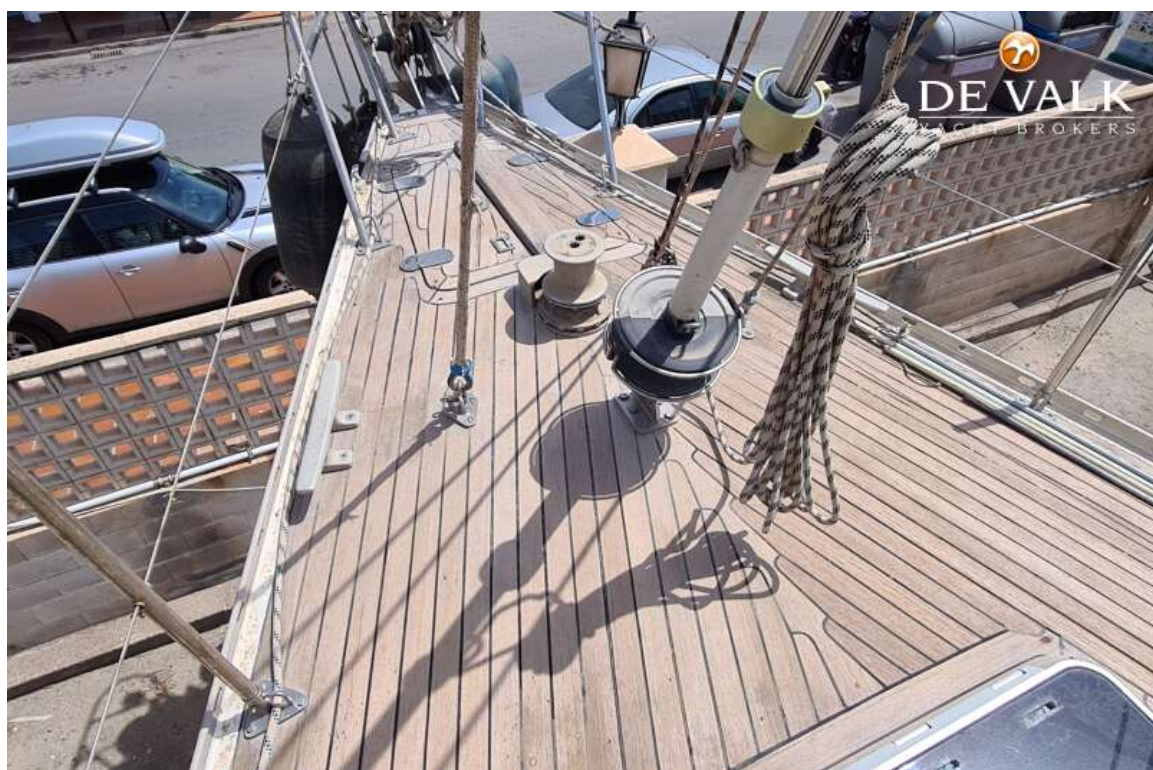
A-symmetric spi	Pink tiradial + snuffer (2015)
Removable innerforestay	yes
Reefing System	main in-mast furling New furling system (2019)
Backstay adjuster	hydraulic Harken backstay tensionner (2021)
Boomvang	mechanical and tackle Refurbished (2019)
Primary sheet winch	2 x Lewmar 65 ST 2SP
Secondary sheet winch	2 x Lewmar 43 ST 2SP
Genoa sheetwinches	2 x Lewmar 52 ST 2SP
Spinnaker winch	2 x Lewmar 16 ST 2 SP
Reefing winch	On mast (Lewmar 30 & 43)
Multifunctional winches	halyard/sheet winches 1 x Lewmar 55 ST 2SP electric
Winchcovers	New 2019
Spi-pole	Refurbished (2 units)
Isolated backstay	yes
Extra info	More sails stored at home (2017)



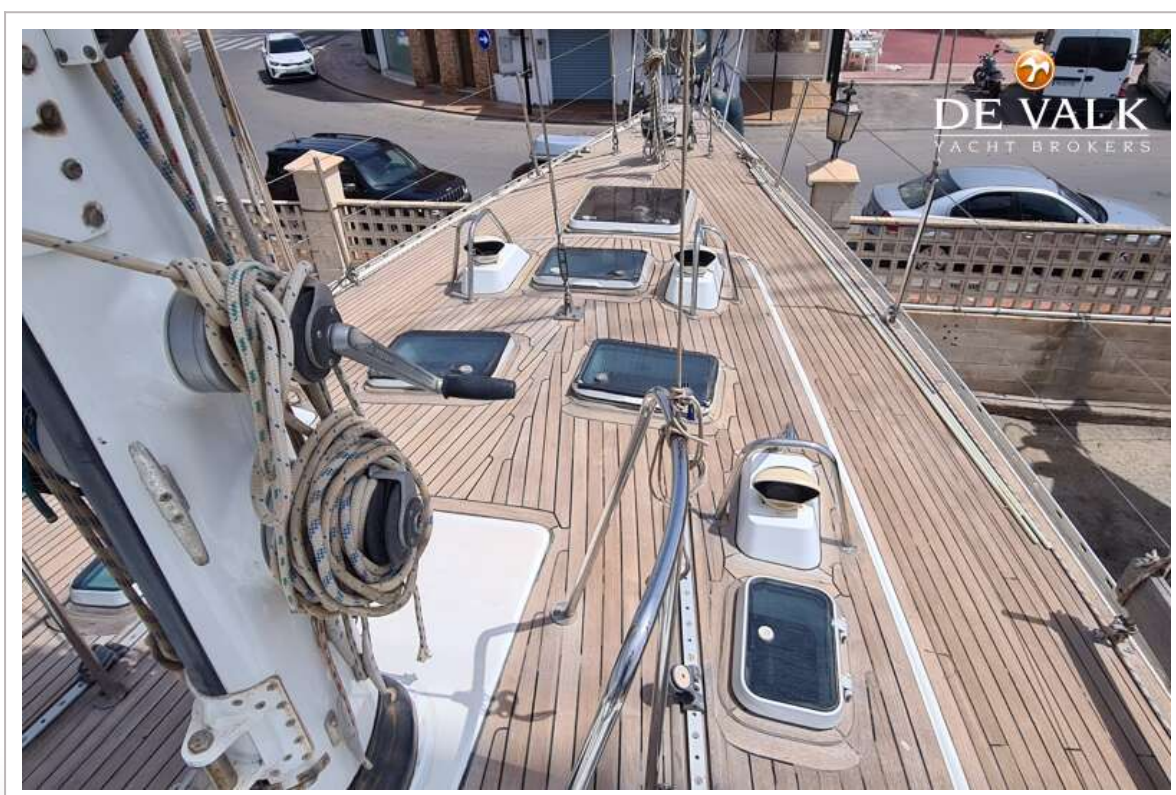
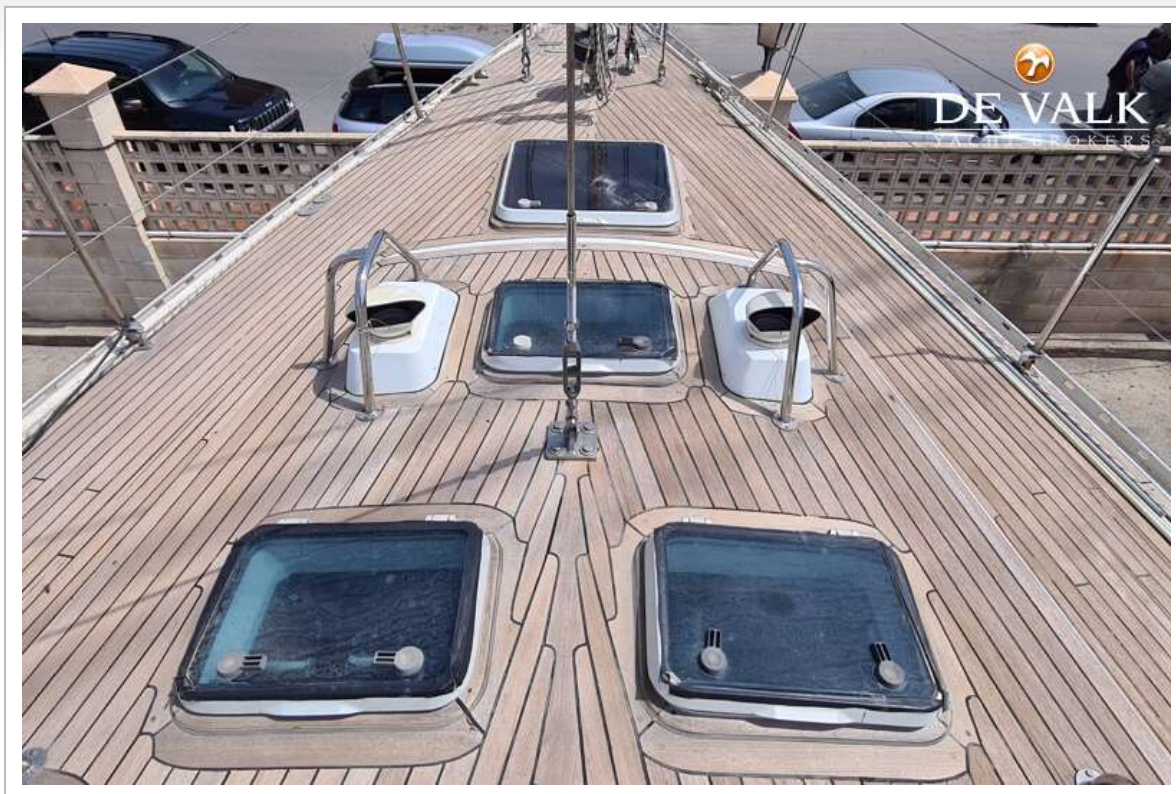
OYSTER 53 HP



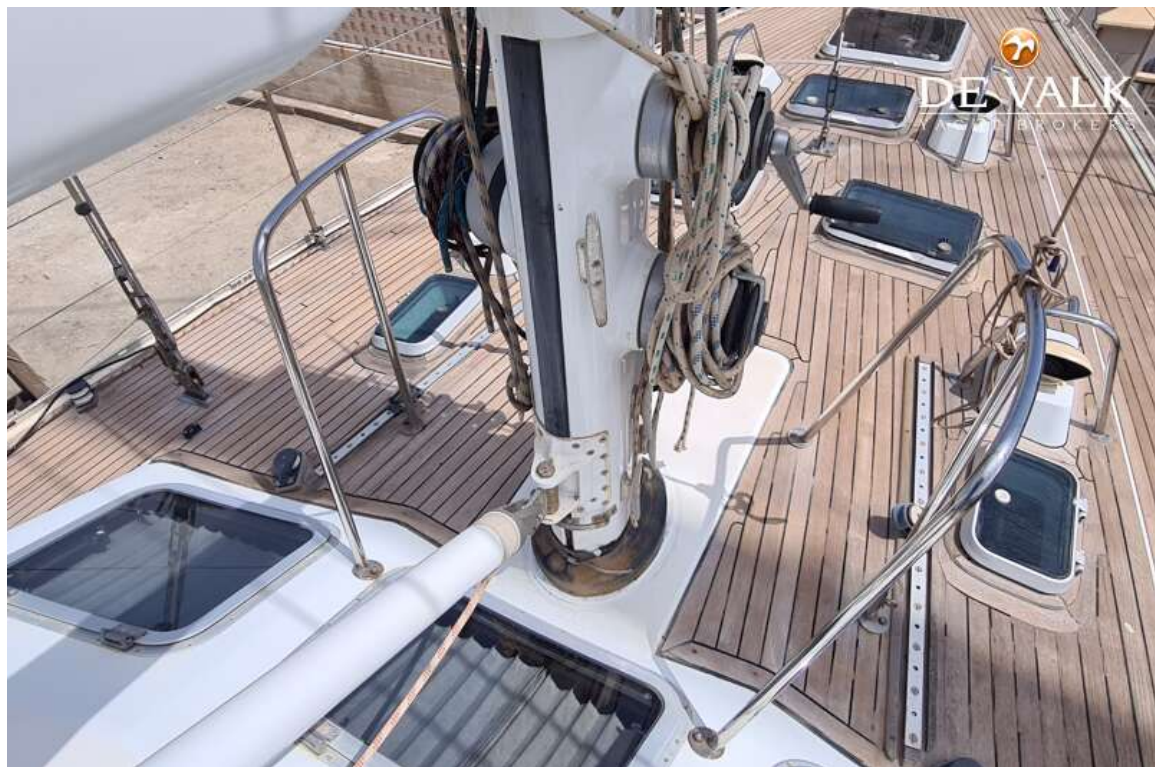
OYSTER 53 HP



OYSTER 53 HP



OYSTER 53 HP



OYSTER 53 HP



OYSTER 53 HP



OYSTER 53 HP



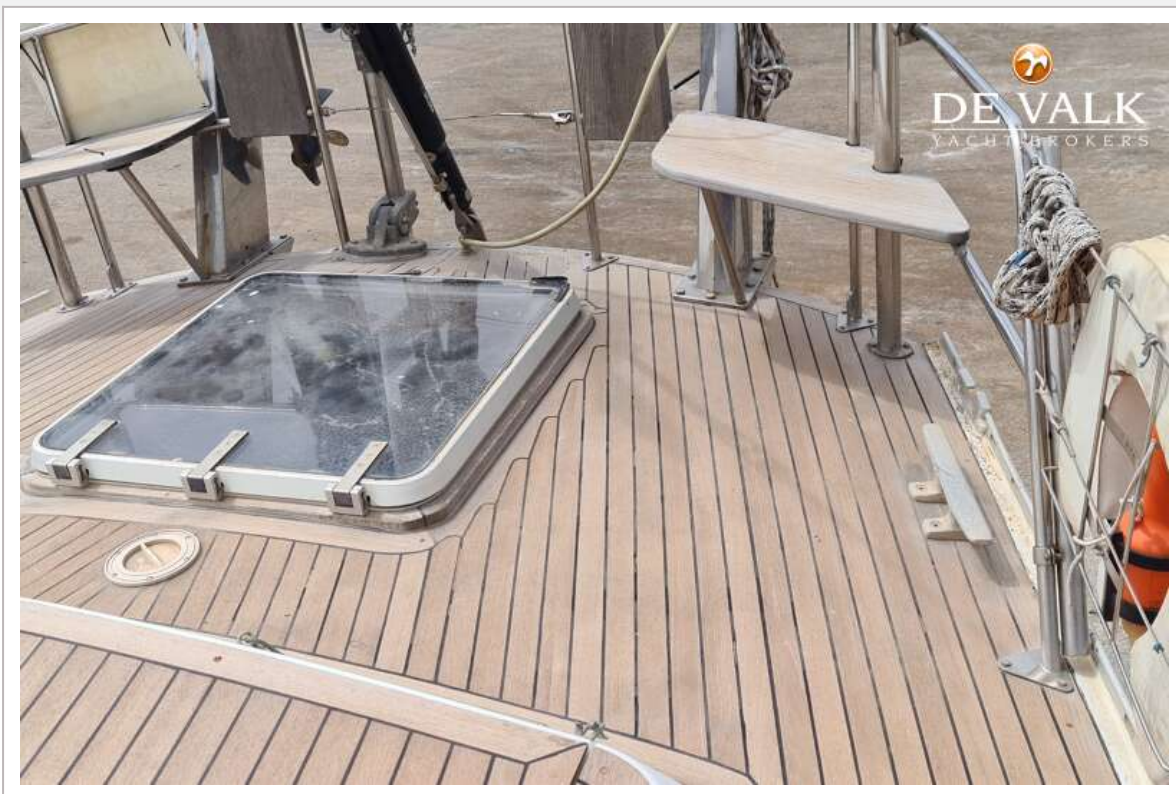
OYSTER 53 HP



OYSTER 53 HP



OYSTER 53 HP



OYSTER 53 HP



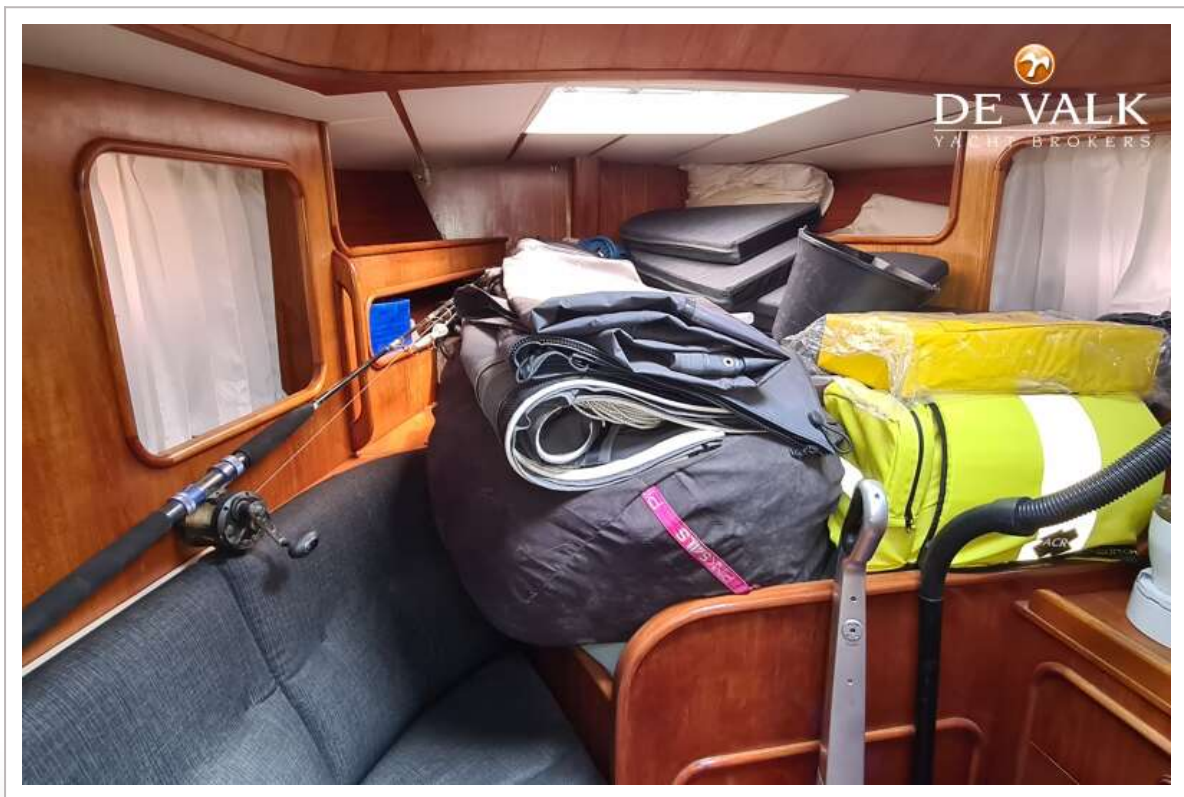
OYSTER 53 HP



OYSTER 53 HP



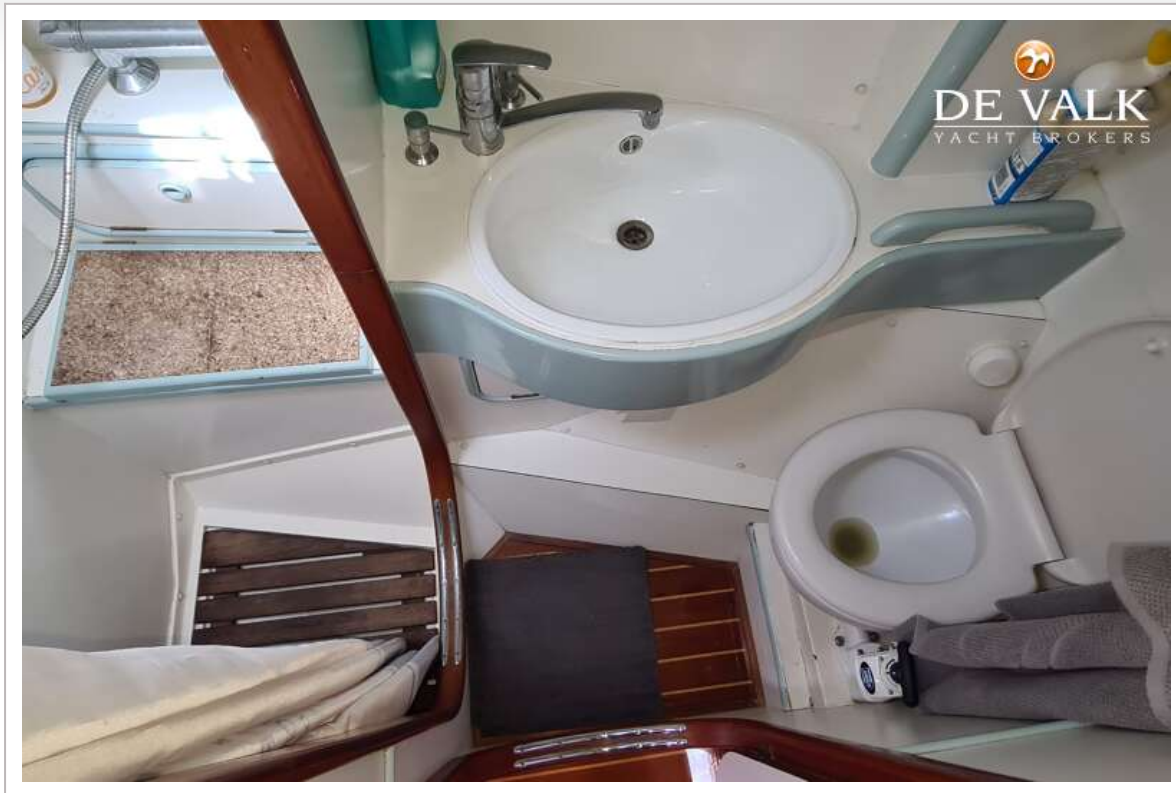
OYSTER 53 HP



OYSTER 53 HP



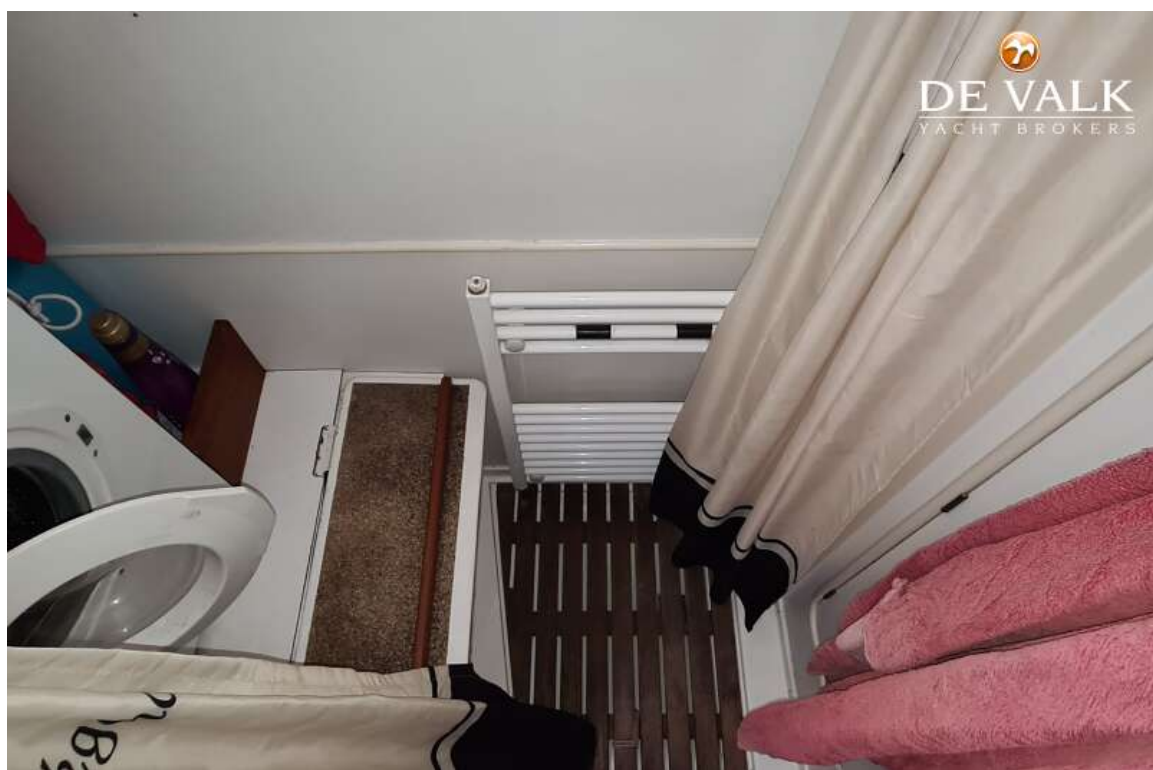
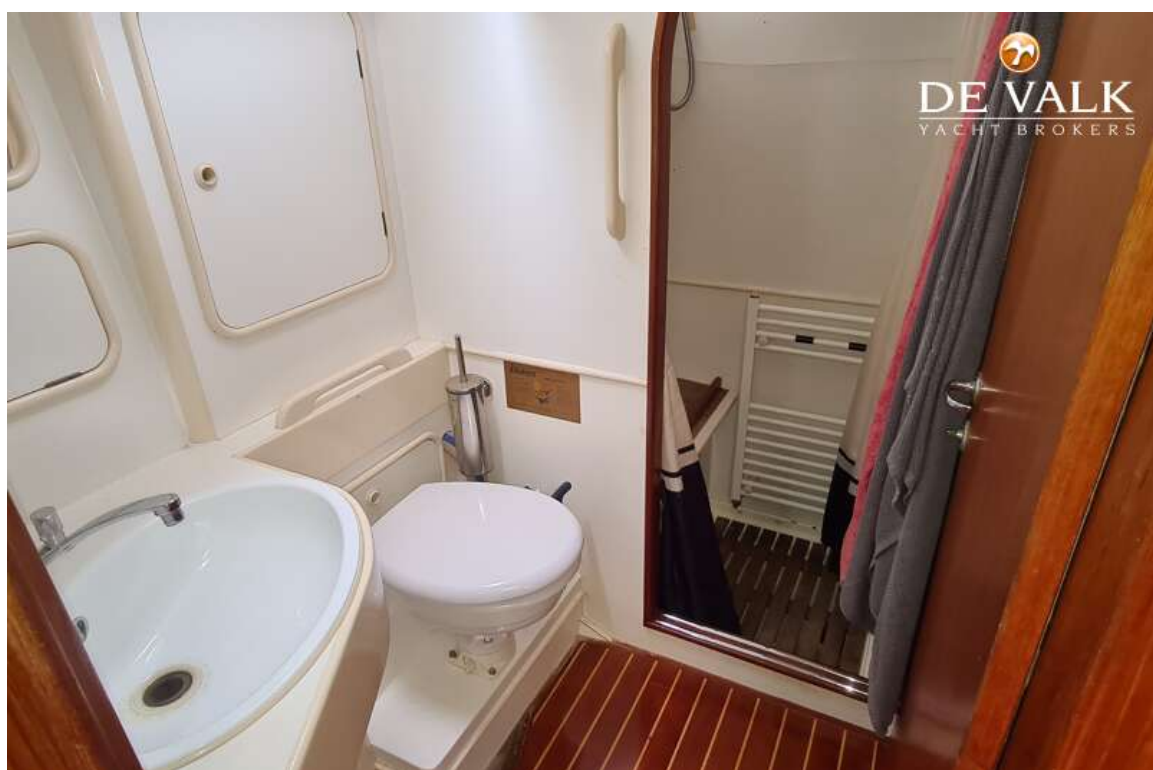
OYSTER 53 HP



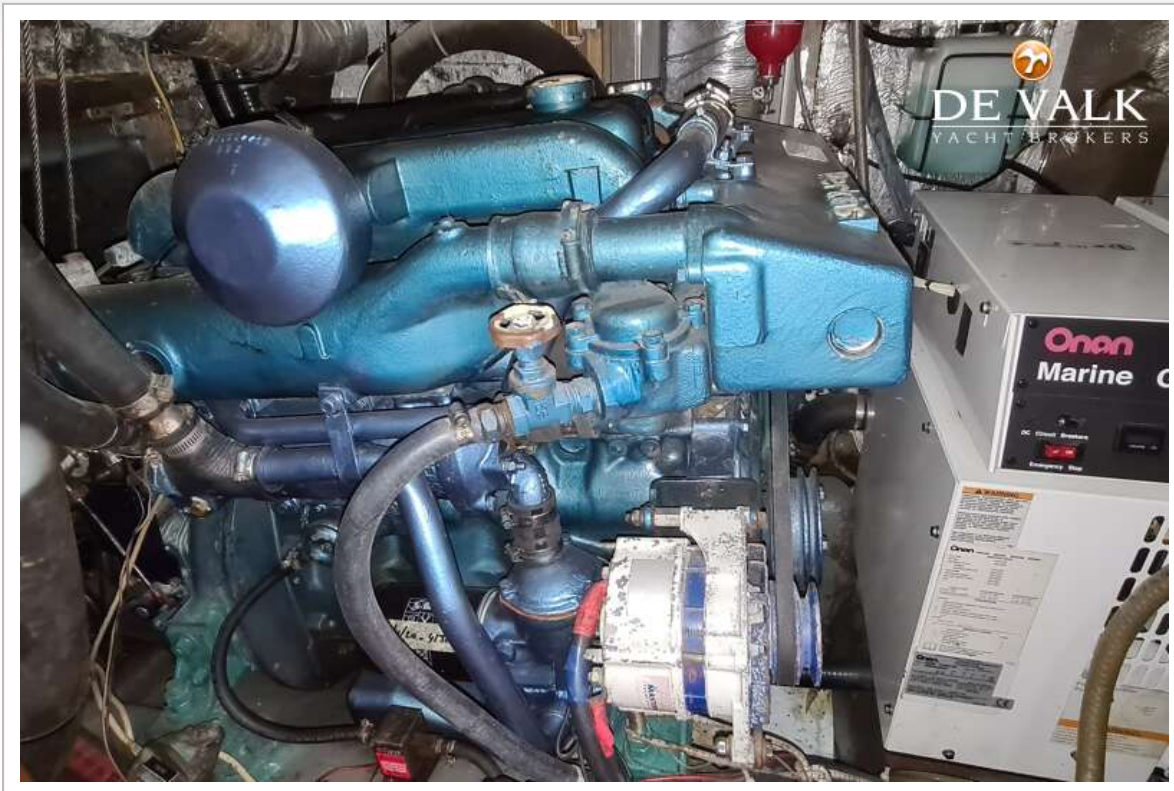
OYSTER 53 HP



OYSTER 53 HP



OYSTER 53 HP



OYSTER 53 HP

