



DE VALK
YACHT BROKERS



APREAMARE 7 CABINATO



DE VALK
YACHT BROKERS

APREAMARE 7 CABINATO

BROKER'S COMMENTS

The Apreamare 7 Cabinato is a true Italian in design and a delightful boat for a night out. Thanks to her V-bed, toilet and kitchen, she is fully equipped to spend a night on board. With her 140hp engine she has plenty of power and the electric bow thruster makes maneuvering a lot easier. Would you like to come and see the Apreamare 7? Please feel free to contact us.

Julian de Heer

SPECIFICATIONS

Dimensions	7.10 x 2.55 x 0.70 (m)	Builder	Apra Mare S.p.A., Sorrento
Built	1997	Cabins	1
Material	GRP	Berths	2
Engine(s)	1 x VM diesel	Hp/Kw	140.00 (hp), 103.04 (kw)
Asking price	sold (VAT)	Lying	at sales office

CONTACT

Sales office	De Valk Loosdrecht B.V.	Telephone	+31 (0)35 582 90 30
Address	't Breukeleveense Meentje 6 1231LM Loosdrecht / Wijdmeren NL	E-mail	loosdrecht@devalk.nl

DISCLAIMER

These particulars are given in good faith as supplied but cannot be guaranteed.



APREAMARE 7 CABINATO

GENERAL

Model	APREAMARE 7 CABINATO
Type	motor yacht
LOA (m)	7,10
LWL (m)	6,55
Beam (m)	2,55
Draft (m)	0,70
Air draft (m)	1,80
Headroom (m)	1,65
Year built	1997
Builder	Aprea Mare S.p.A., Sorrento
Country	Italy
Designer	Spadolini
Displacement (t)	3,1
CE norm	NA
Hull material	GRP
Hull colour	blue
Hull shape	hard chine
Superstructure material	GRP
Deck material	GRP
Deck finish	teak
Cockpit deck finish	teak
Window frame	stainless steel
Window material	polycarbonate
Portholes	stainless steel
Fuel tank (litre)	aluminium 150
Level indicator (fuel tank)	Level glass
Freshwater tank (litre)	130
Wheel steering	hydraulic
Outside helm position	hydraulic



APREAMARE 7 CABINATO

ACCOMMODATION

Cabins	1
Berths	2
Interior	mahogany
Layout	yes
Floor	wood
Open cockpit	yes
Heating	diesel ducted hot air Webasto
Opening door to cockpit	yes
Galley	yes
Countertop	plastic
Sink	stainless steel
Cooker	calor gas 1 burner
Fridge	Indel B
Freezer	In fridge
Hot water system	220V + engine Boiler 20 L
Water pressure system	electrical
Owners cabin	v-bed
Toilet	separate
Toilet system	electric
Wash basin	at the toilet

MACHINERY

No of engines	1
Make	VM
HP	140
kW	103.04
Fuel	diesel
Maximum speed (kn)	20
Engine hours	1075
Engine cooling system	freshwater heat exchanger



Drive	shaft
Engine controls	bowden cable
Gearbox	hydraulic
Bowthruster	electric Vetus
Exhaust	watercooled
Propeller type	fixed
Propeller shaft material	stainless steel
Shaft lubrication	water
Electric bilge pump	yes
Start battery	Sportline 12V / 105Ah
Service battery	Sportline 12V / 105Ah
Battery charger	yes
Solar panel	1 panel, with charger controller
Shorepower	with cable

NAVIGATION

Depth sounder/log	Tacktick MN100-2
Windset	Tacktick MN100-2
Navigation lights	yes

EQUIPMENT

Fixed windscreen	yes
Cockpit cover	yes
Bimini	yes
Cockpit cushions	yes
Bathing platform	yes
Boarding ladder	stainless steel
Anchor	yes
Anchor chain	yes
Windlass	electrical Vetus
Grab rail (superstructure)	stainless steel



APREAMARE 7 CABINATO

Wiper	1x
Horn	electric
Fenders	yes
Mooring lines	yes
Radio	Sony Marine Drive-s
Cockpit speakers	yes
Speakers in cabin	yes



APREAMARE 7 CABINATO



APREAMARE 7 CABINATO



APREAMARE 7 CABINATO



APREAMARE 7 CABINATO



APREAMARE 7 CABINATO



APREAMARE 7 CABINATO



APREAMARE 7 CABINATO



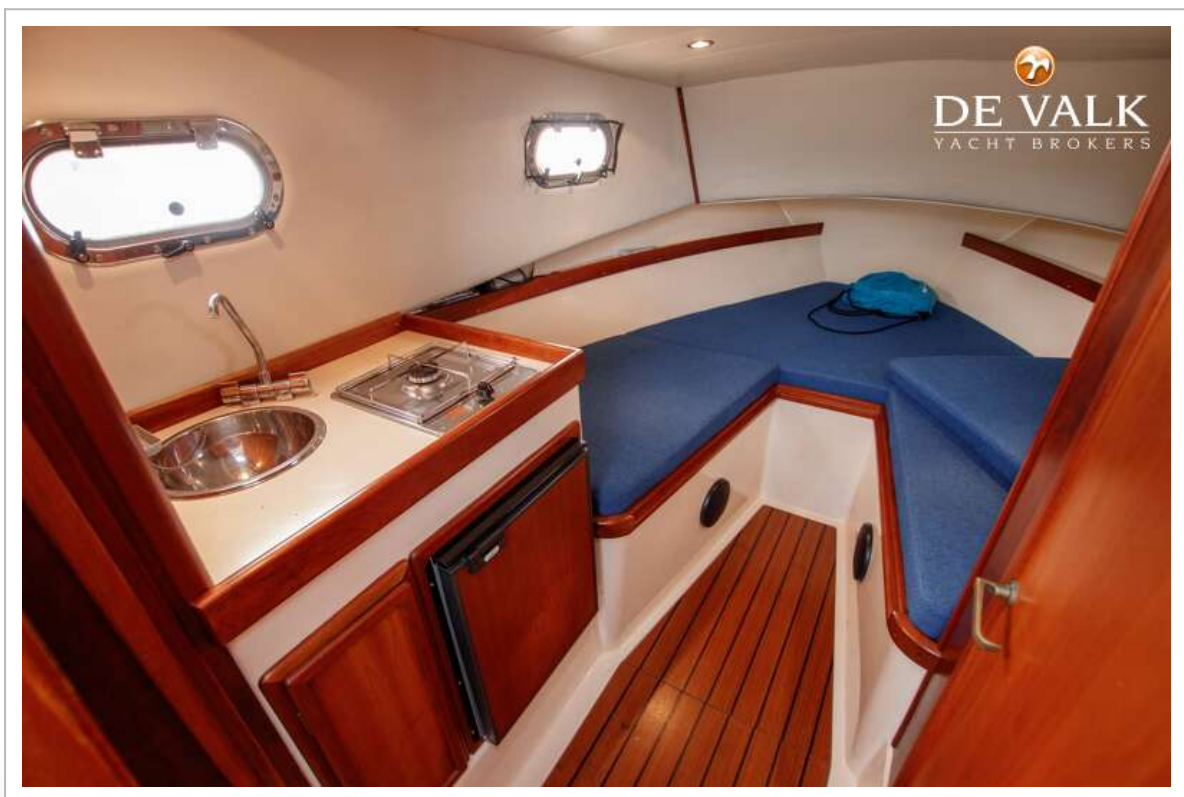
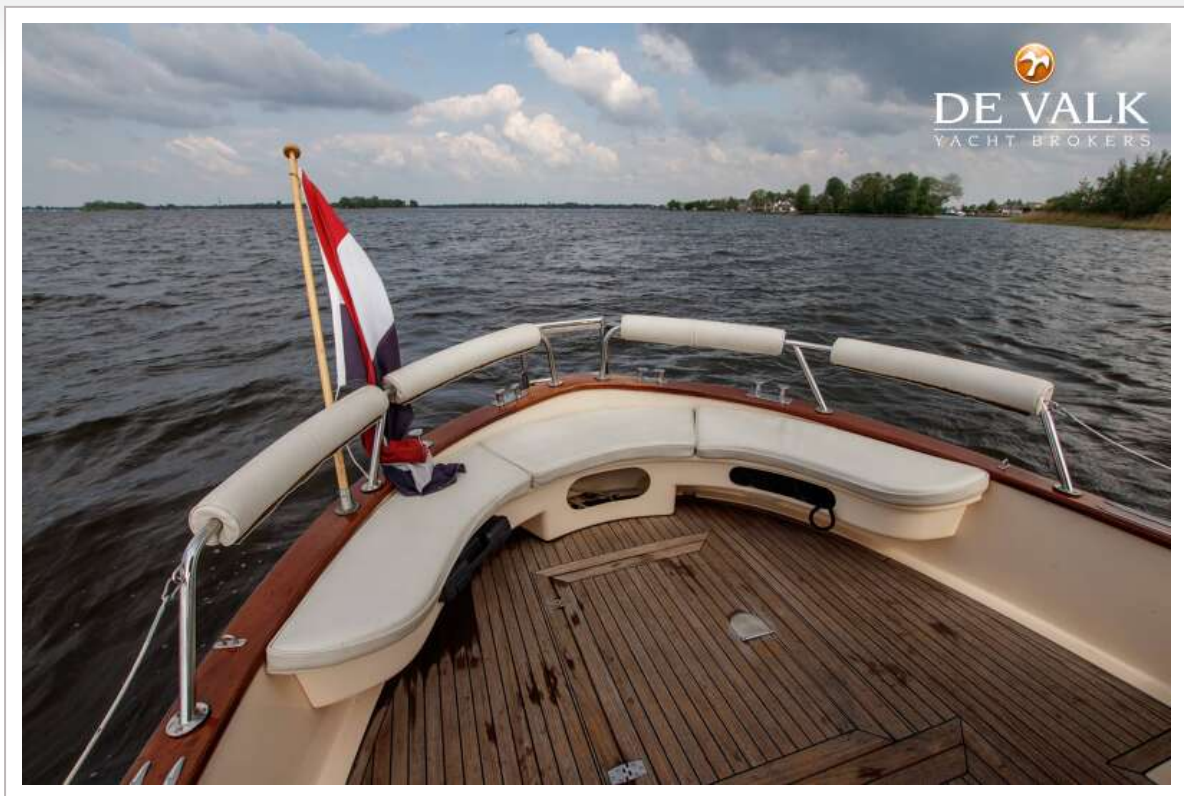
APREAMARE 7 CABINATO



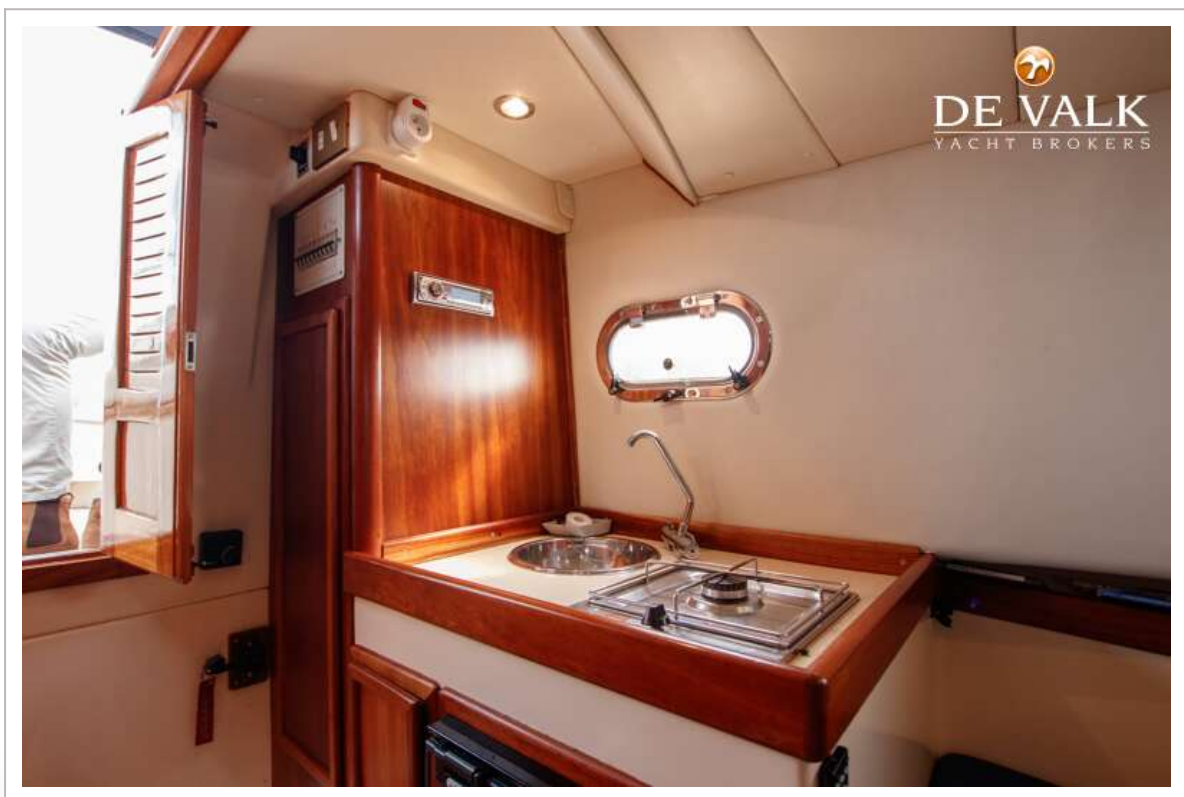
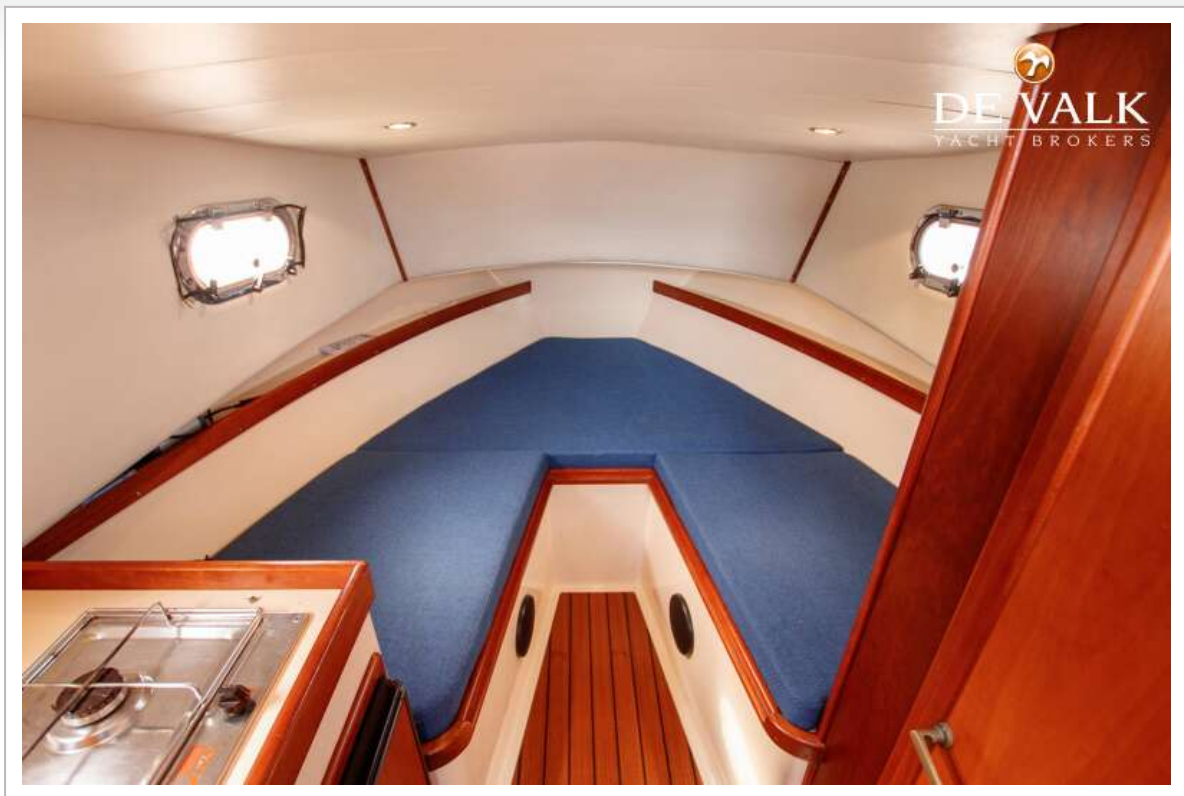
APREAMARE 7 CABINATO



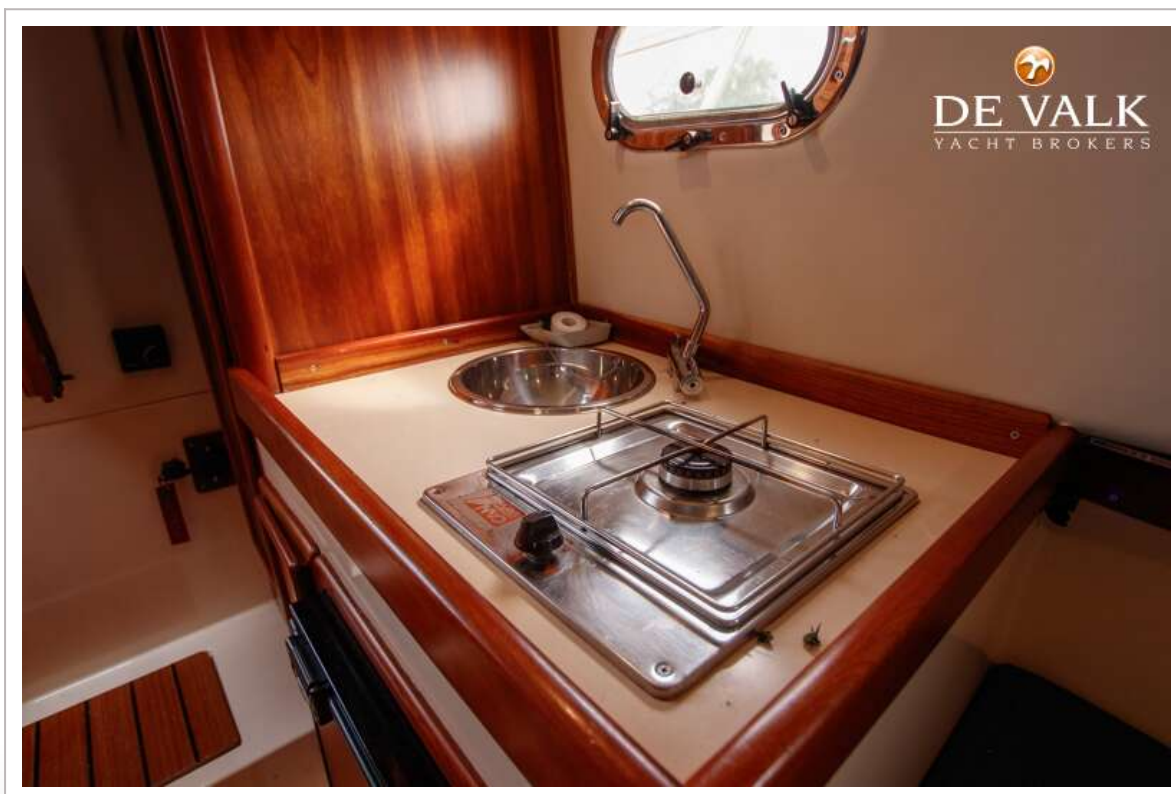
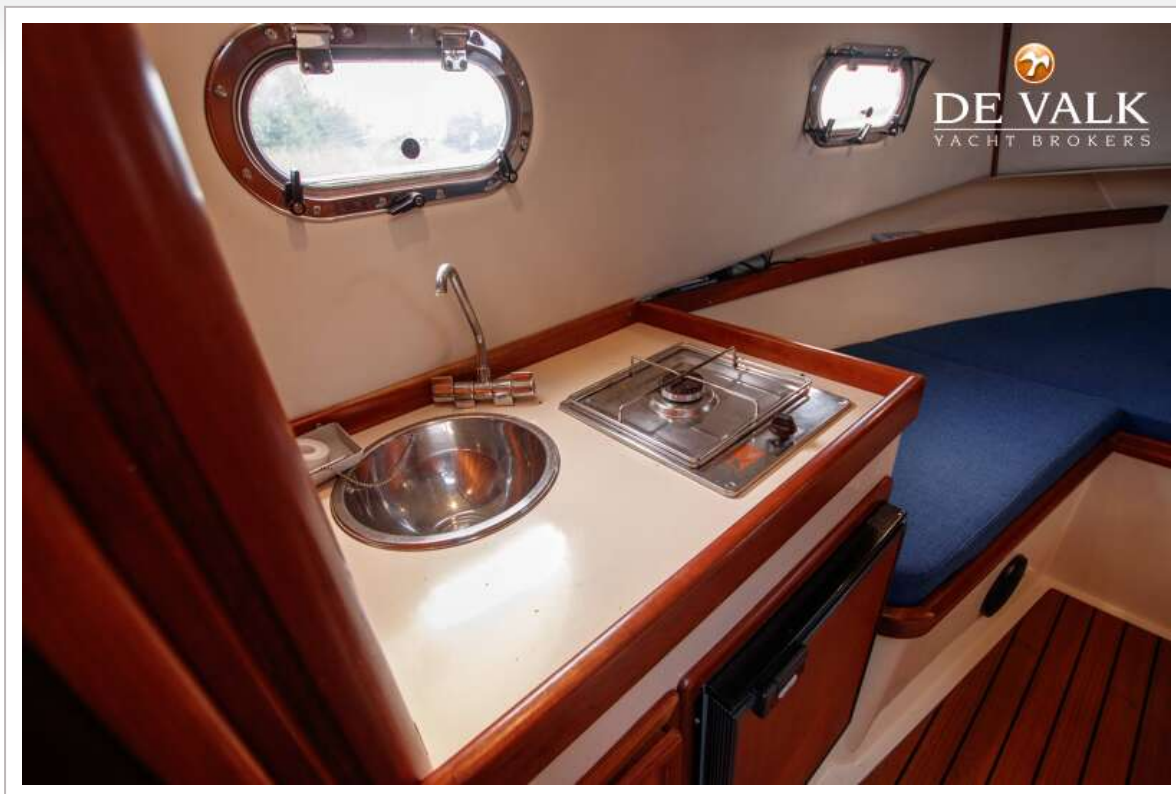
APREAMARE 7 CABINATO



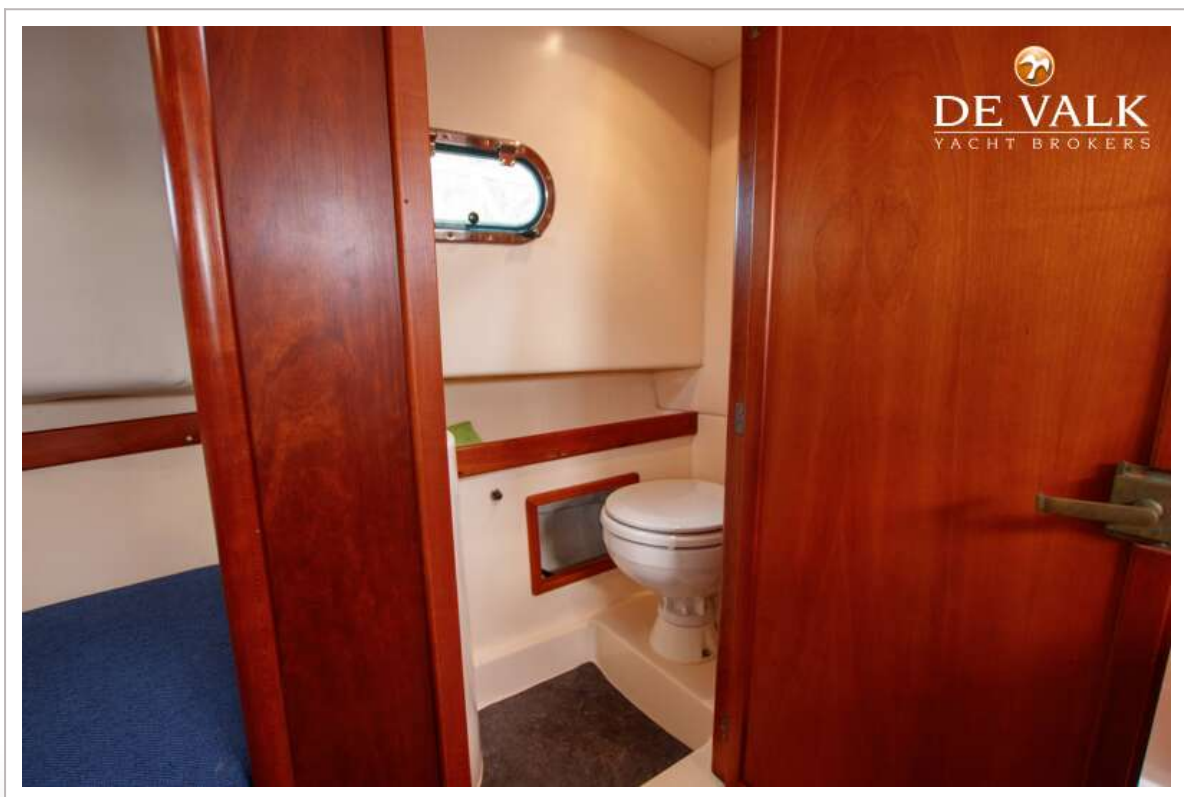
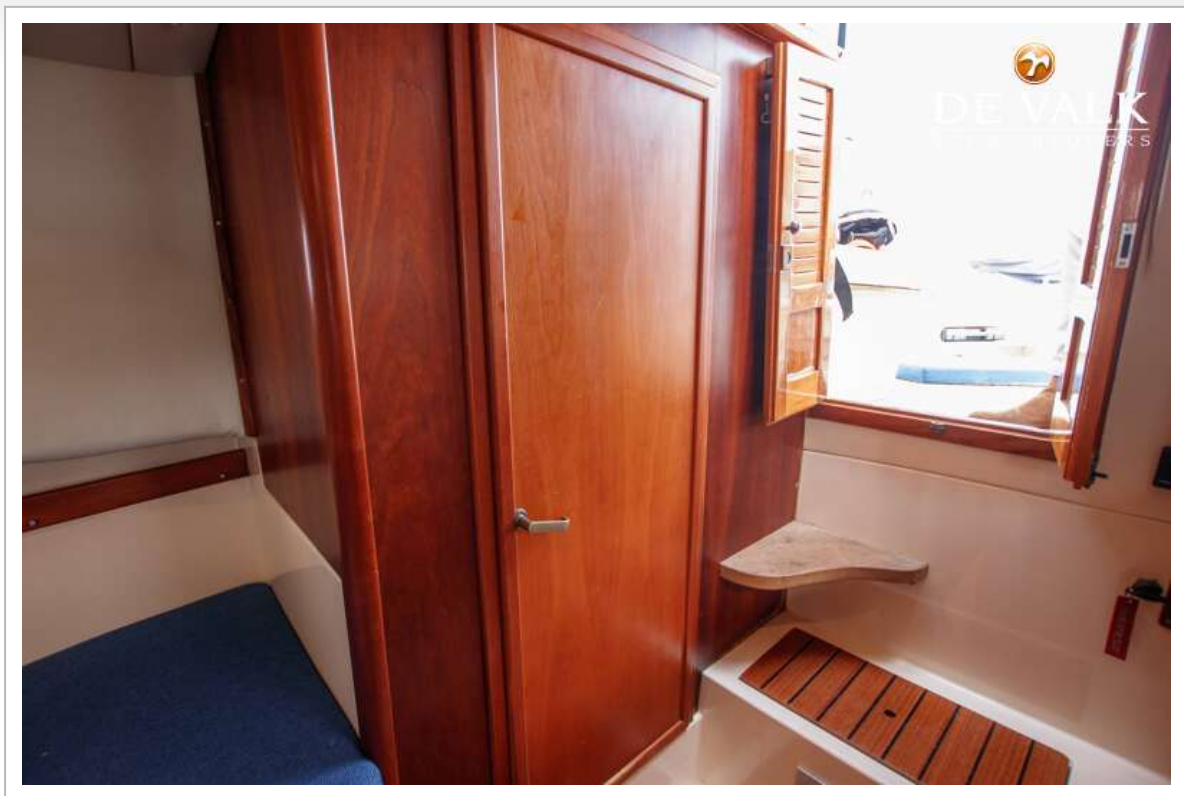
APREAMARE 7 CABINATO



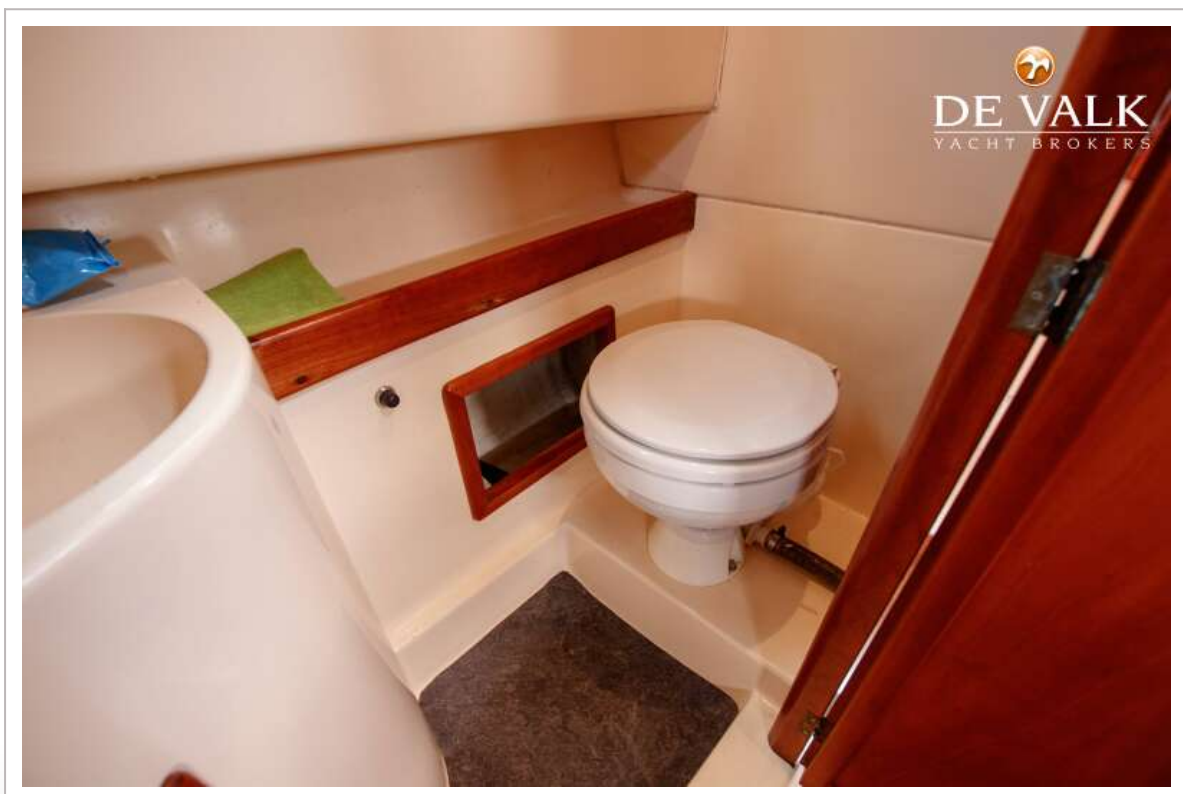
APREAMARE 7 CABINATO



APREAMARE 7 CABINATO



APREAMARE 7 CABINATO



APREAMARE 7 CABINATO

