



HOUSEBOAT WATERLOFT LUXEMOTOR SPITZ 38M

HOUSEBOAT WATERLOFT LUXEMOTOR SPITZ 38M

BROKER'S COMMENTS

This Belgian Spits is the ideal houseboat on which to discover all of Europe. In the hold, the ship has 4 bedrooms, all with private bathrooms, a living room-kitchen with a height of more than 3.5 metres. And an independent studio in the stern, which is perfect for renting out via AirBnb. The ship could also be used as mini river cruise ship for small groups. The ship just has new CVO certification, the antifouling and hull have just been repainted. The entire hull is fitted with an epoxy system. You are invited to come and view the ship in our sales marina.

Mark Hesselmans

SPECIFICATIONS

Dimensions	38.20 x 5.05 x 1.10 (m)	Builder	Merelbeke
Built	1951	Cabins	5
Material	Steel	Berths	10
Engine(s)	1 x Gardner 8LXB diesel	Hp/Kw	175.00 (hp), 128.80 (kw)
Asking price	€ 459.000 (VAT Paid)	Lying	contact Loosdrecht

CONTACT

Sales office	De Valk Loosdrecht B.V.	Telephone	+31 (0)35 582 90 30
Address	't Breukeleveense Meentje 6 1231LM Loosdrecht / Wijdmeren NL	E-mail	loosdrecht@devalk.nl

DISCLAIMER

These particulars are given in good faith as supplied but cannot be guaranteed.



HOUSEBOAT WATERLOFT LUXEMOTOR SPITZ 38M

GENERAL

Model	HOUSEBOAT WATERLOFT LUXEMOTOR SPITZ 38M
Type	motor yacht
LOA (m)	38,20
Beam (m)	5,05
Draft (m)	1,10
Air draft (m)	4,02
Air draft min (m)	3,30
Year built	1951
Builder	Merelbeke
Country	Belgium
Displacement (t)	184
Hull material	steel
Hull colour	black
Hull thickness (mm)	6
Hull shape	flat bottom
Superstructure material	steel
Superstructure (mm)	6
Deck plate thickness (mm)	6
Rubbing strake	steel
Deck material	steel
Deck finish	non-skid paint
Cockpit deck finish	teak
Antifouling (year)	2023
Window frame	aluminium
Window material	double glazing
Deckhatch	yes
Portholes	brass 12x Antique French Liner 38cm, with privacy covers
Insulation	rockwool
Mast can be lowered	manual
Fuel tank (litre)	steel 2000 (cleaned in 2023, fuel polishers were installed)



HOUSEBOAT WATERLOFT LUXEMOTOR SPITZ 38M

Fuel tank 2 (litre)	steel 2000 (Cleaned in 2023, fuel polishers were installed)
Level indicator (fuel tank)	Sight glasses
Freshwater tank (litre)	stainless steel 5500
Level indicator (freshwater)	Tank tender
Blackwater tank (litre)	steel 1200
Level indicator (blackwater)	Tank tender
Blackwater tank extraction	deck extraction + pump
Greywater tank (litre)	800
Level indicator (greywater)	Tank tender
Wheel steering	rack & pinion
Inside helm position	yes
More info on hull	Hull thickness measured in summer 2023
More info on paintwork	Hull and underwater body painted in summer 2023
Extra info	Hull and underwater body are coated with a 2 part epoxy
Extra info	Deck and superstructure are painted in 2 part epoxy system.
Extra info	The ship has had new CVO certification in summer 2023

ACCOMMODATION

Cabins	5
Berths	10
Interior	Contemporary
Floor	wood Oak floor in the kitchen + carpet in the living and cabins
Pilot house	Pilot house renewed in 2018 together with double glazing
Pilot house/deck saloon	Kitchen + diner area
Headroom saloon (m)	3.2 m + 2.5 m in the kitchen
Heating	central heating Kabola 50KB diesel
Aft Cabin	Studio with a separate entrance via the pilot house
Dining room	In the kitchen area
Galley	yes
Countertop	granite
Sink	Corian



HOUSEBOAT WATERLOFT LUXEMOTOR SPITZ 38M

Cooker	induction
Oven	2x electric hot air Bosch & Neff
Extractor	Bosch
Microwave	Bosch oven + microwave combined
Fridge	2x Bosch
Freezer	Bosch
Wine cooler	Logik
Hot water system	220V 200 L also working on the inverter
Water pressure system	electrical
Dishwasher	Siemens
Owners cabin	French bed
Wardrobe	walk-in closet
Bathroom	en suite
Toilet	en suite
Toilet system	electric
Wash basin	in the bathroom
Shower	en suite
Bath tub	en suite
Guest cabin 1	French bed
Wardrobe	walk-in closet
Bathroom	en suite
Toilet	en suite
Toilet system	electric
Wash basin	in the bathroom
Shower	en suite
Guest cabin 2	French bed
Wardrobe	walk-in closet
Bathroom	en suite
Toilet	en suite
Toilet system	electric
Wash basin	in the bathroom
Shower	en suite



HOUSEBOAT WATERLOFT LUXEMOTOR SPITZ 38M

Guest cabin 3	bunk bed Own separate entrance from forward deck
Wardrobe	hanging/drawers/shelves
Bathroom	yes
Toilet	separate
Toilet system	electric
Wash basin	in the bathroom
Shower	en suite
Guest cabin 4	French bed Complete studio including kitchen and own entrance
Wardrobe	hanging/drawers/shelves
Bathroom	yes
Toilet	en suite
Toilet system	electric
Wash basin	in the bathroom
Shower	en suite
Extra info	Studio interior is the original interior
Washing machine	AEG 8kg
Dryer	AEG
Ironing facilities	Storage facilities for iron board and cupboard for airing

MACHINERY

No of engines	1
Make	Gardner
Type	8LXB
HP	175
kW	128.80
Fuel	diesel
Year installed	2011
Year of overhaul	2011
Maximum speed (kn)	9
Cruising speed (kn)	7,5
Consumption (l/hr)	19



HOUSEBOAT WATERLOFT LUXEMOTOR SPITZ 38M

Range (nm)	1500
Engine hours	598
Engine cooling system	freshwater heat exchanger
Drive	shaft
Shaft seal	yes
Engine controls	bowden cable
Gearbox	hydraulic Twin disc Installed in 2007
Bowthruster	electric Side power Sp285 TCI Brushless Motor 285Kgf 48V + remote control
Exhaust	watercooled
Propeller type	fixed Bronze year 2018
Propeller blades	4
Propeller shaft material	stainless steel
Shaft lubrication	grease
Manual bilge pump	1x
Electric bilge pump	3x
Bilge alarm	Engine room + main hold
Electrical installation	230 V + 24 V
Generator	silent separator Beta Marine 20 - 11,2KV
Running hours generator	1000
Batteries	yes
Start battery	2x 180 Ah 12V combined to 24V (installed in 2023)
Service battery	6x 6V Rolls deep cycle
Generator battery	1x 12V + charger Victron 7A
Bowthruster battery	2x 12V 180Ah + battery charger Victron 100A
Battery monitor	Victron Cerbo GX, 2023, connected to WiFi, remote access
Battery charger	Victron Quattro 24V 120A (service) Victron 24V 50A (start)
Inverter	Victron Quattro 24V 5000watt installed 2023
Shorepower	with cable

NAVIGATION



HOUSEBOAT WATERLOFT LUXEMOTOR SPITZ 38M

Compass	NASA Magnetic
Electric compass	Autopilot Sigma 650
Depth sounder	Garmin
Log	Garmin
Fish finder	Garmin
VHF	Sailor RT144 + ICOM ICM411
VHF handheld	ICOM
Autopilot	Sigma 650
Rudder angle indicator	yes
Radar	Garmin
Plotter/GPS	Garmin
AIS transceiver	Garmin
Navigation lights	yes
Searchlight	Hand held
Loudhailer	Vingtor Intercom system through whole ship

EQUIPMENT

Cockpit cushions	yes
Cockpit table	Teak
Cockpit chairs	Teak 8x + 3 sun beds
Boarding ladder	stainless steel
Gangway	2x
Deck shower	On forward deck
Anchor	Danforth 2x on the bow + 1x at the stern
Anchor chain	yes
Windlass	hydraulic At the bow
Windlass aft	manual
Deck wash	yes
Deck crane	electric 750kg
Grab rail (superstructure)	steel
Lifebuoy	3x



HOUSEBOAT WATERLOFT LUXEMOTOR SPITZ 38M

Horn	air pressure
Fenders	yes
Mooring lines	yes
Spare parts	yes
Tools	yes
TV	yes
TracVision ball	yes
Fire extinguisher	Troughout the whole ship
Latest extinguisher survey	2023
Auto extinguisher system	In engine room



HOUSEBOAT WATERLOFT LUXEMOTOR SPITZ 38M



HOUSEBOAT WATERLOFT LUXEMOTOR SPITZ 38M



HOUSEBOAT WATERLOFT LUXEMOTOR SPITZ 38M



HOUSEBOAT WATERLOFT LUXEMOTOR SPITZ 38M



HOUSEBOAT WATERLOFT LUXEMOTOR SPITZ 38M



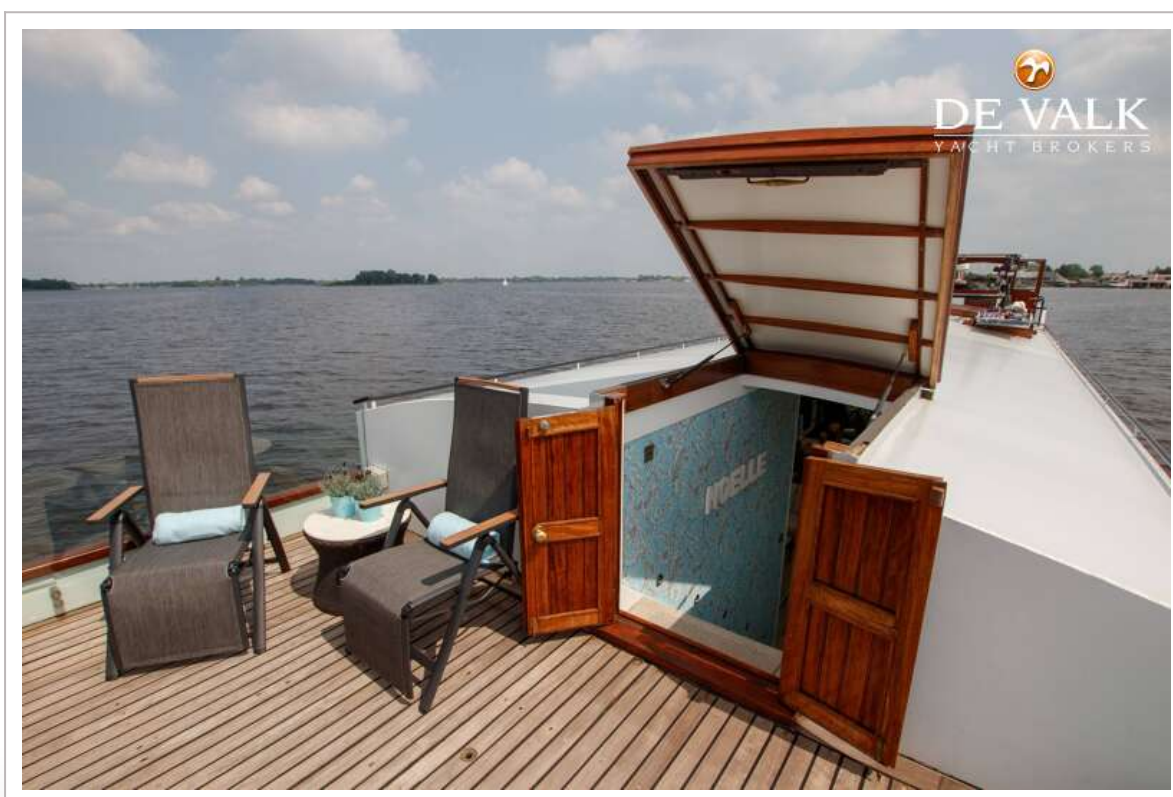
HOUSEBOAT WATERLOFT LUXEMOTOR SPITZ 38M



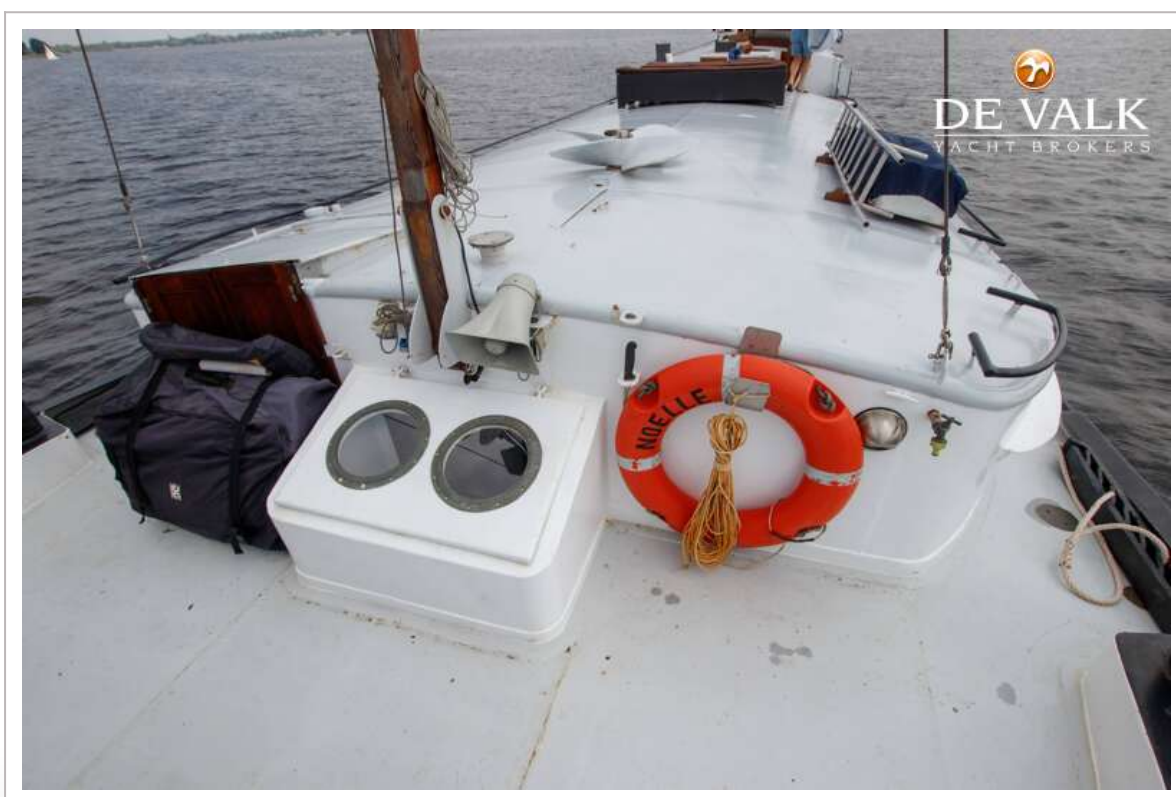
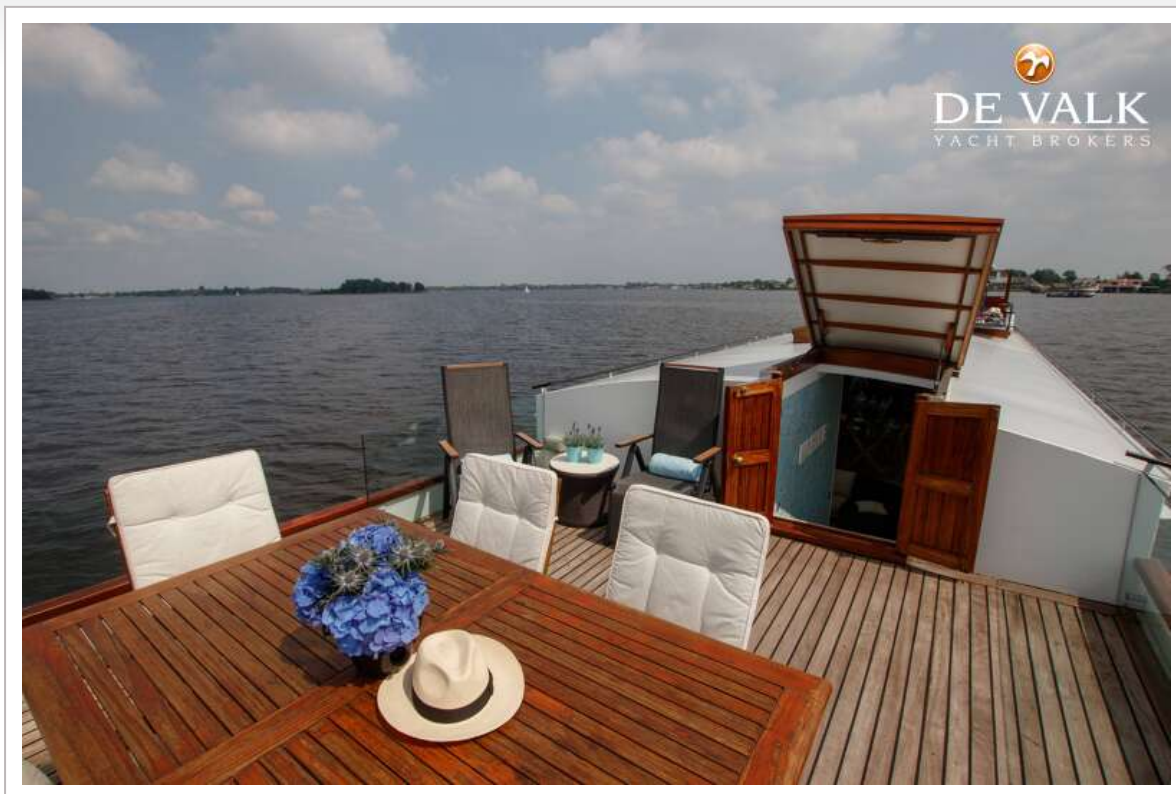
HOUSEBOAT WATERLOFT LUXEMOTOR SPITZ 38M



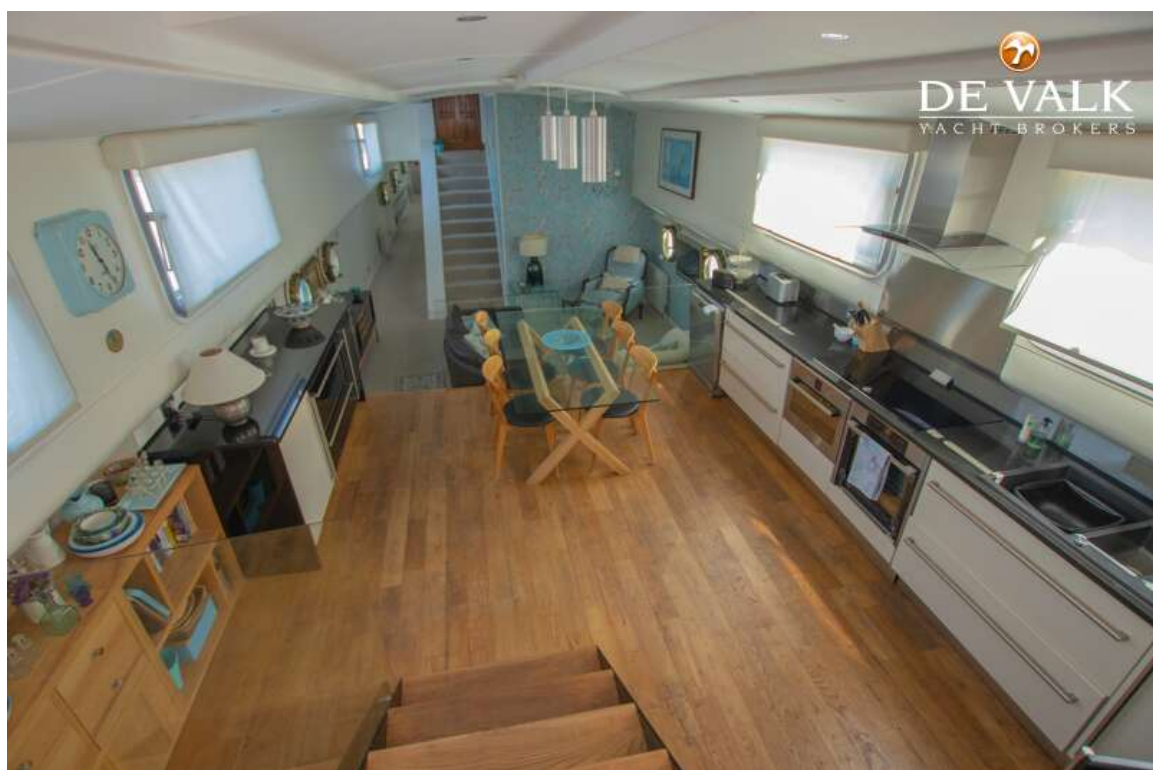
HOUSEBOAT WATERLOFT LUXEMOTOR SPITZ 38M



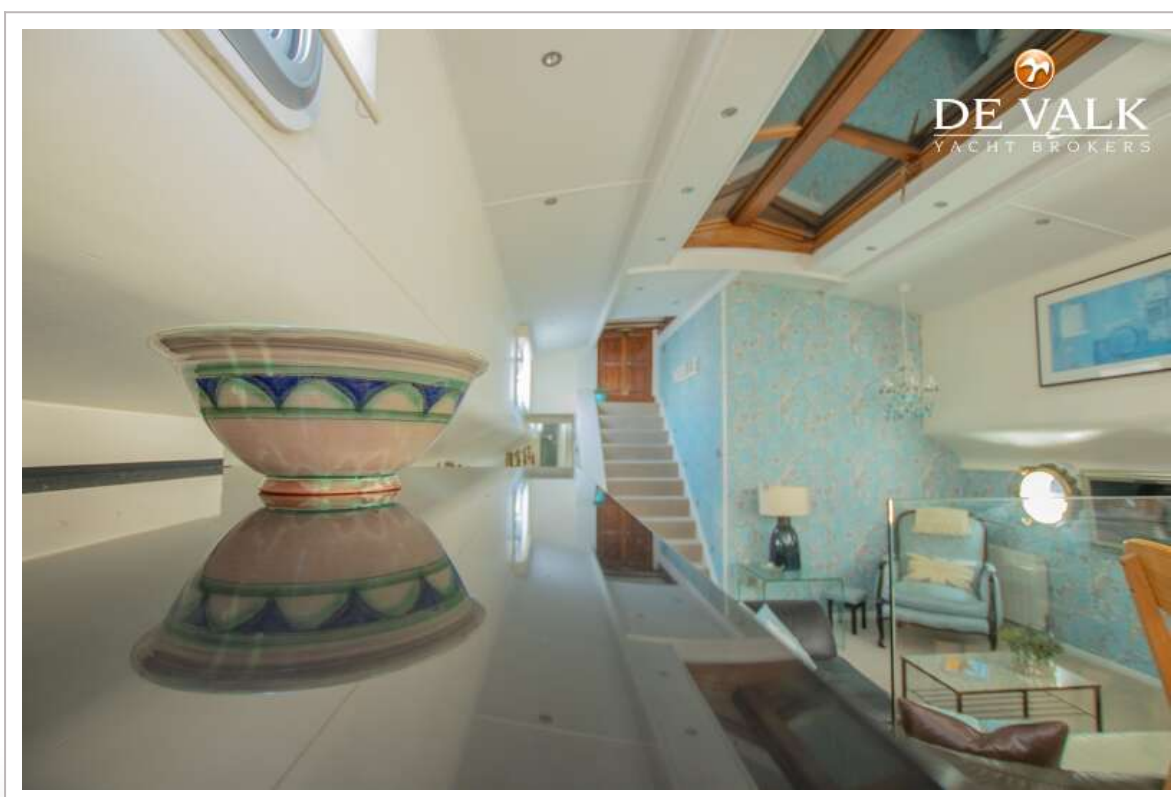
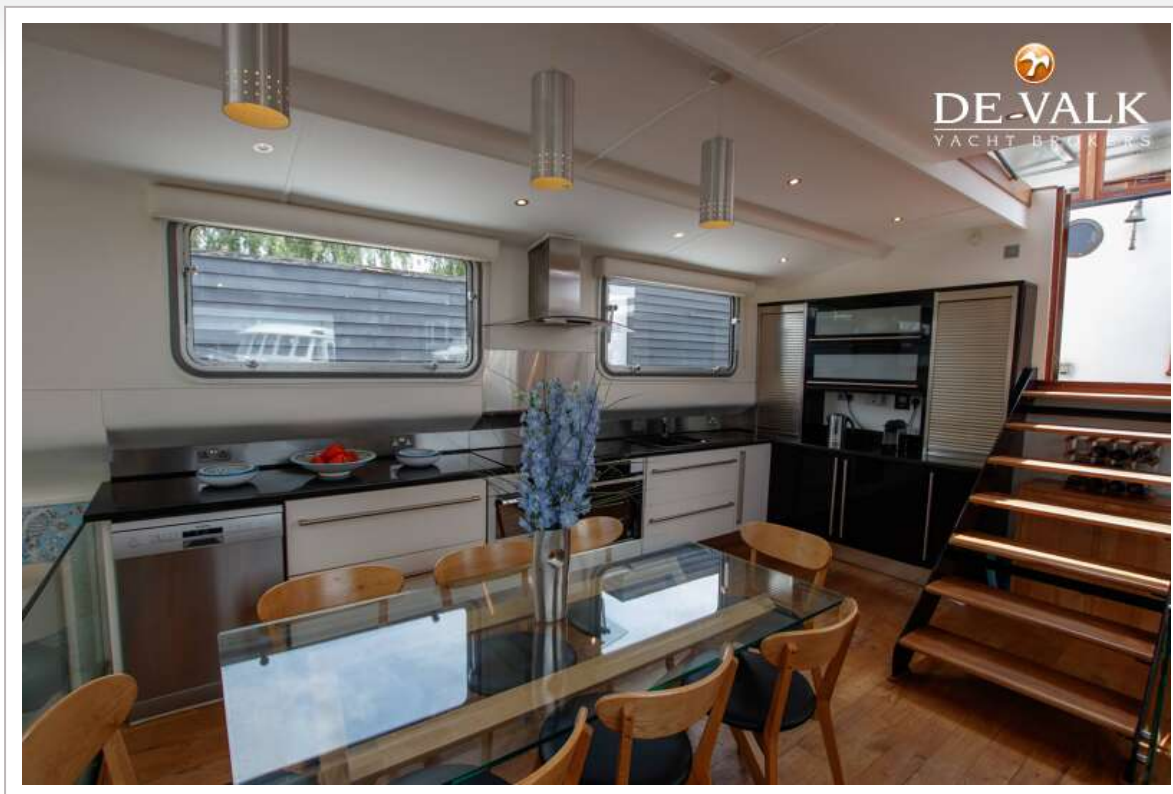
HOUSEBOAT WATERLOFT LUXEMOTOR SPITZ 38M



HOUSEBOAT WATERLOFT LUXEMOTOR SPITZ 38M



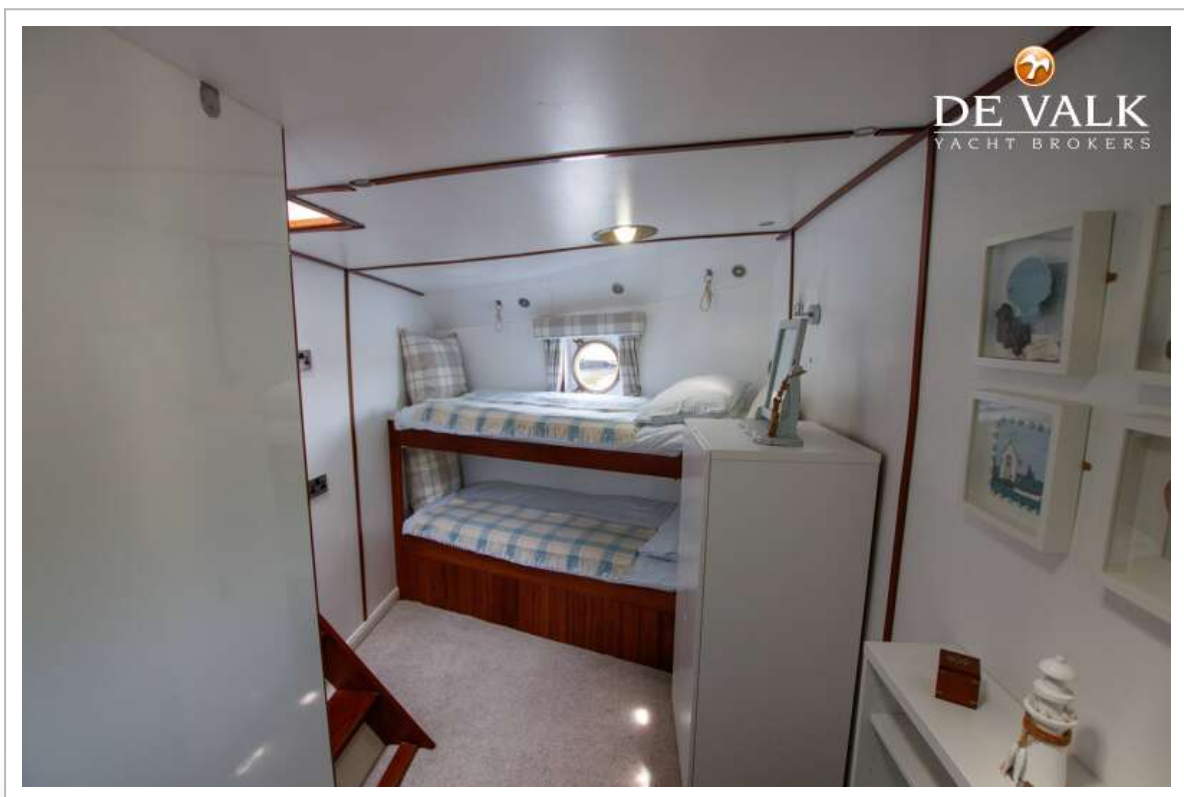
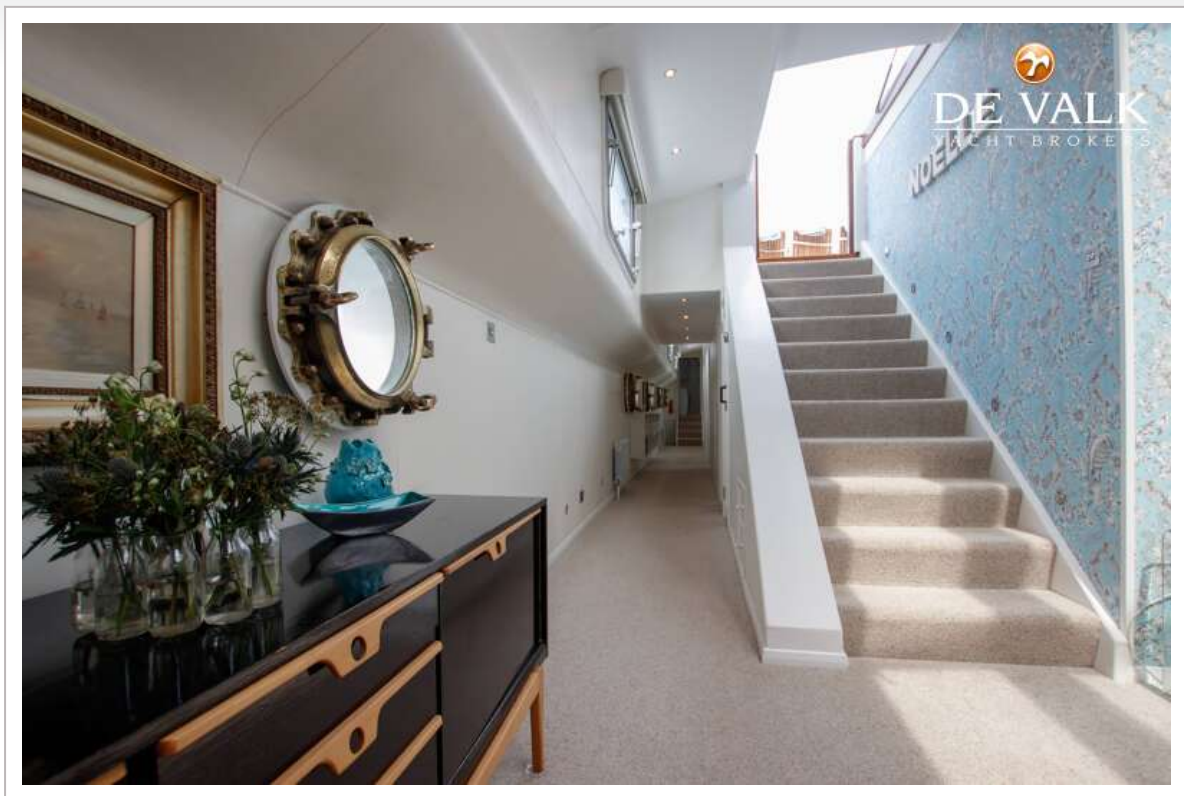
HOUSEBOAT WATERLOFT LUXEMOTOR SPITZ 38M



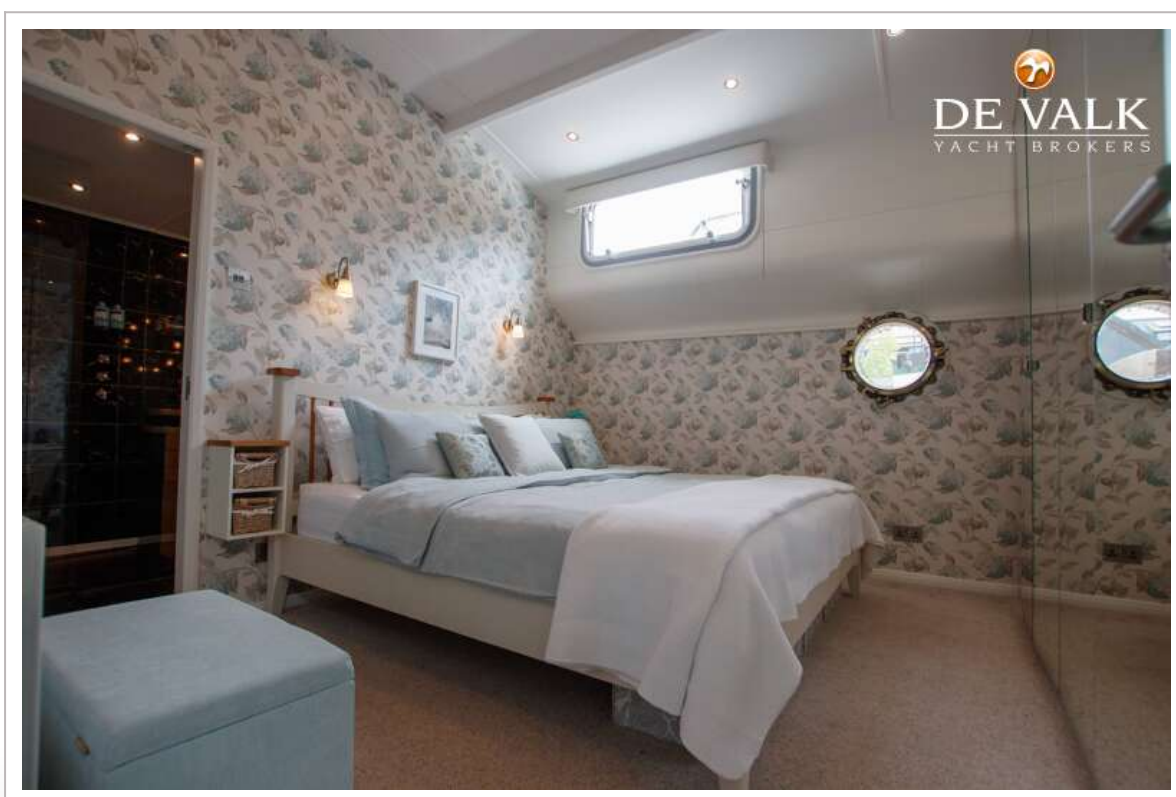
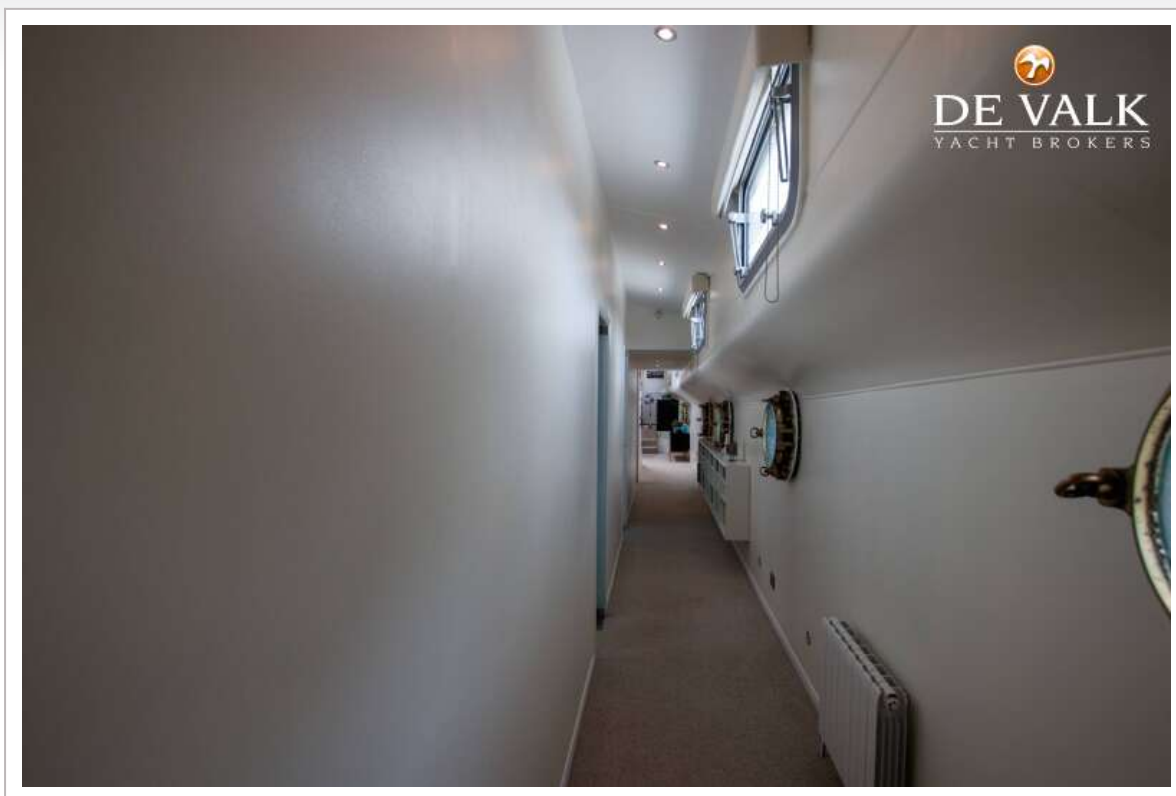
HOUSEBOAT WATERLOFT LUXEMOTOR SPITZ 38M



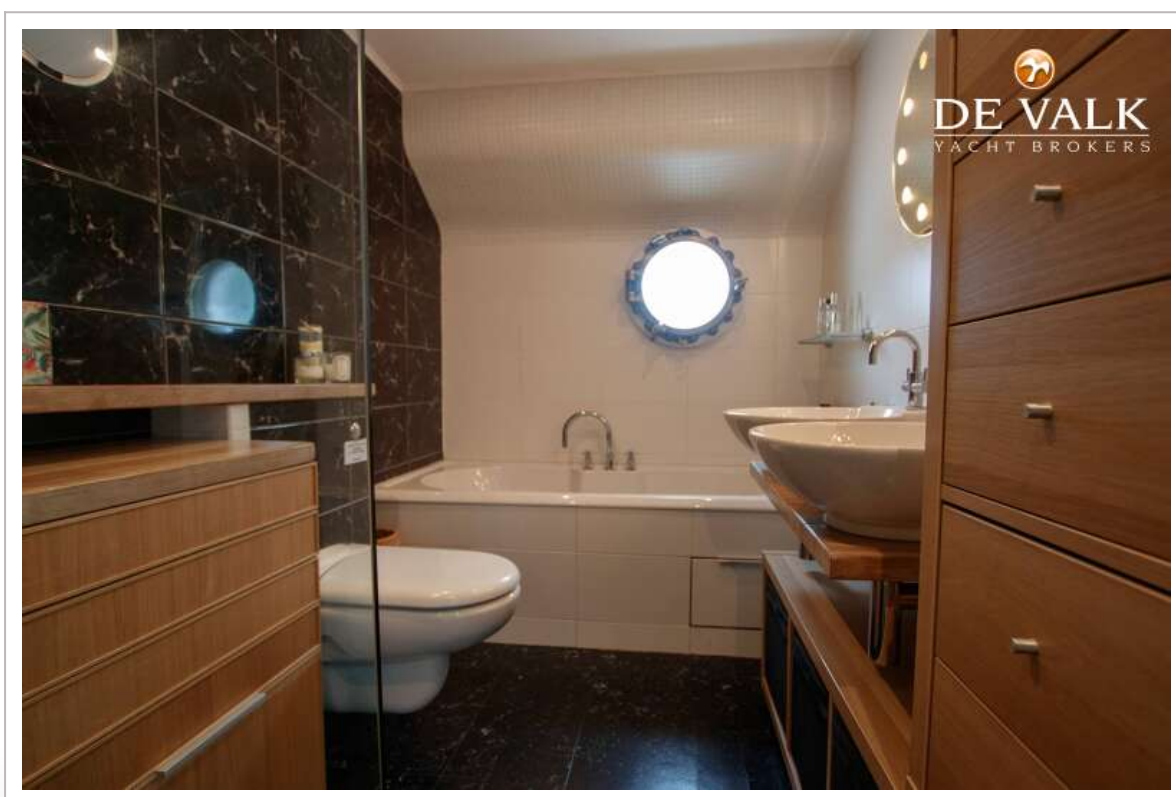
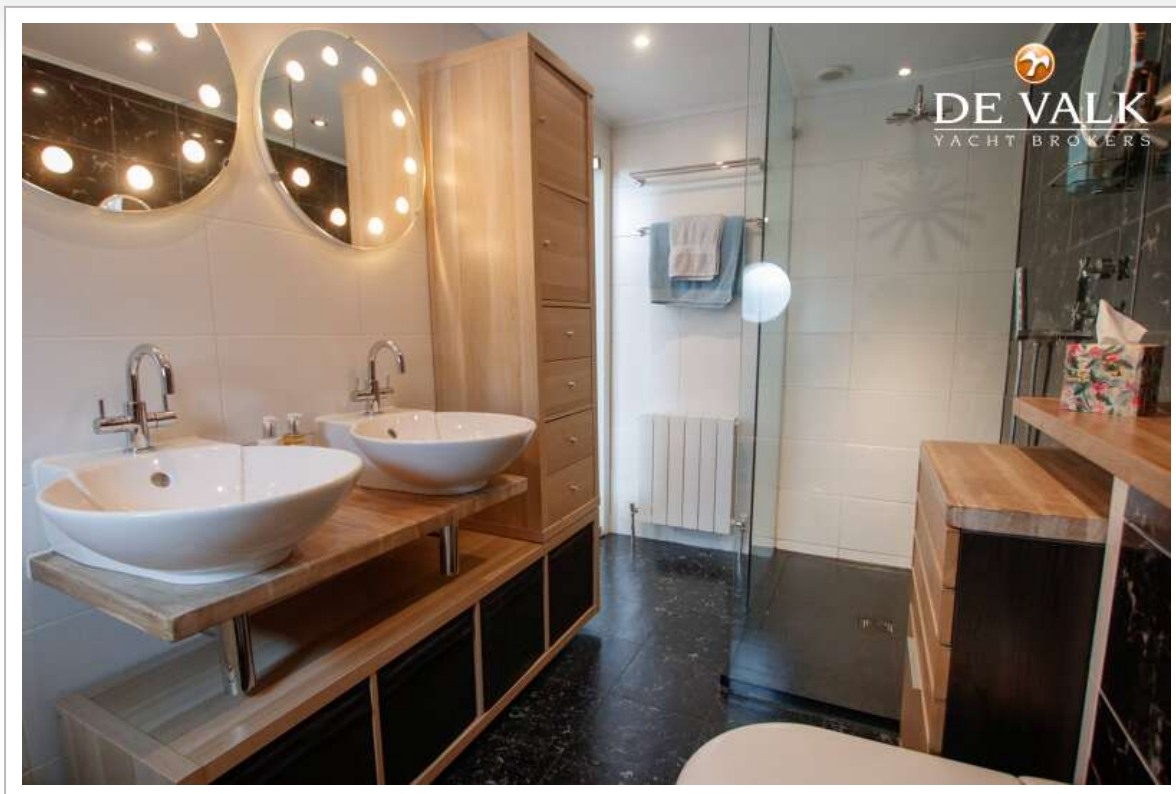
HOUSEBOAT WATERLOFT LUXEMOTOR SPITZ 38M



HOUSEBOAT WATERLOFT LUXEMOTOR SPITZ 38M



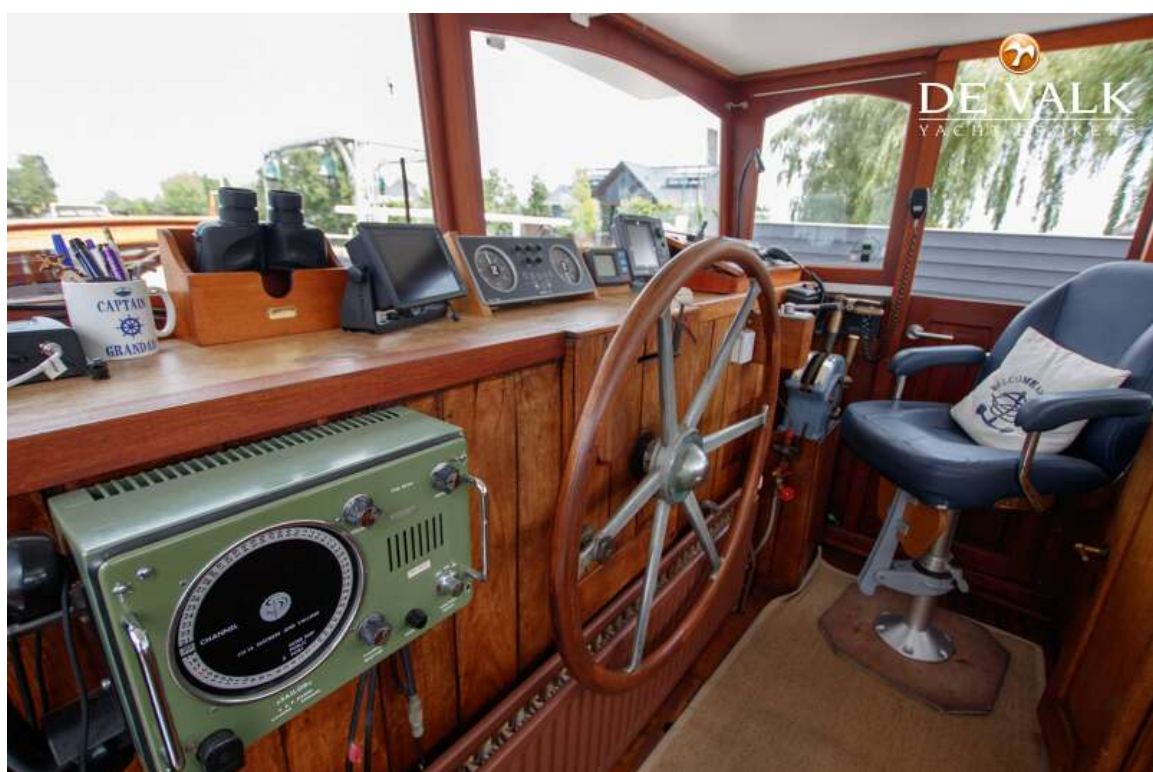
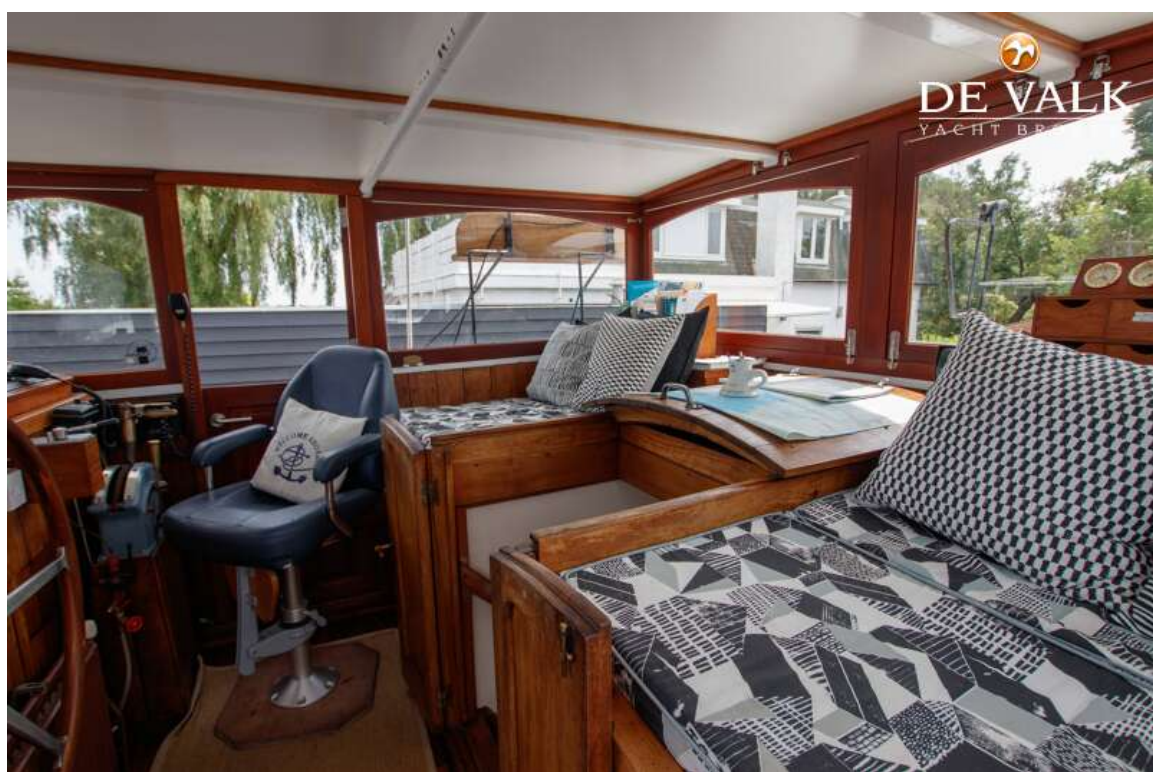
HOUSEBOAT WATERLOFT LUXEMOTOR SPITZ 38M



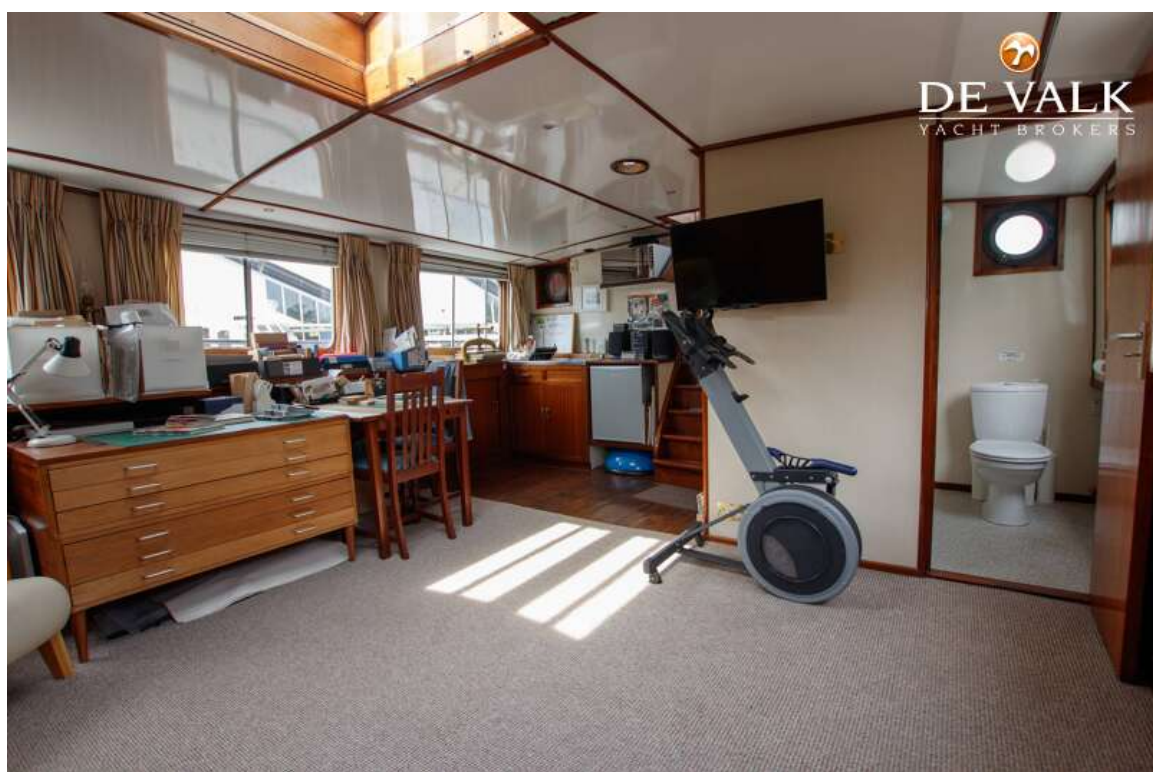
HOUSEBOAT WATERLOFT LUXEMOTOR SPITZ 38M



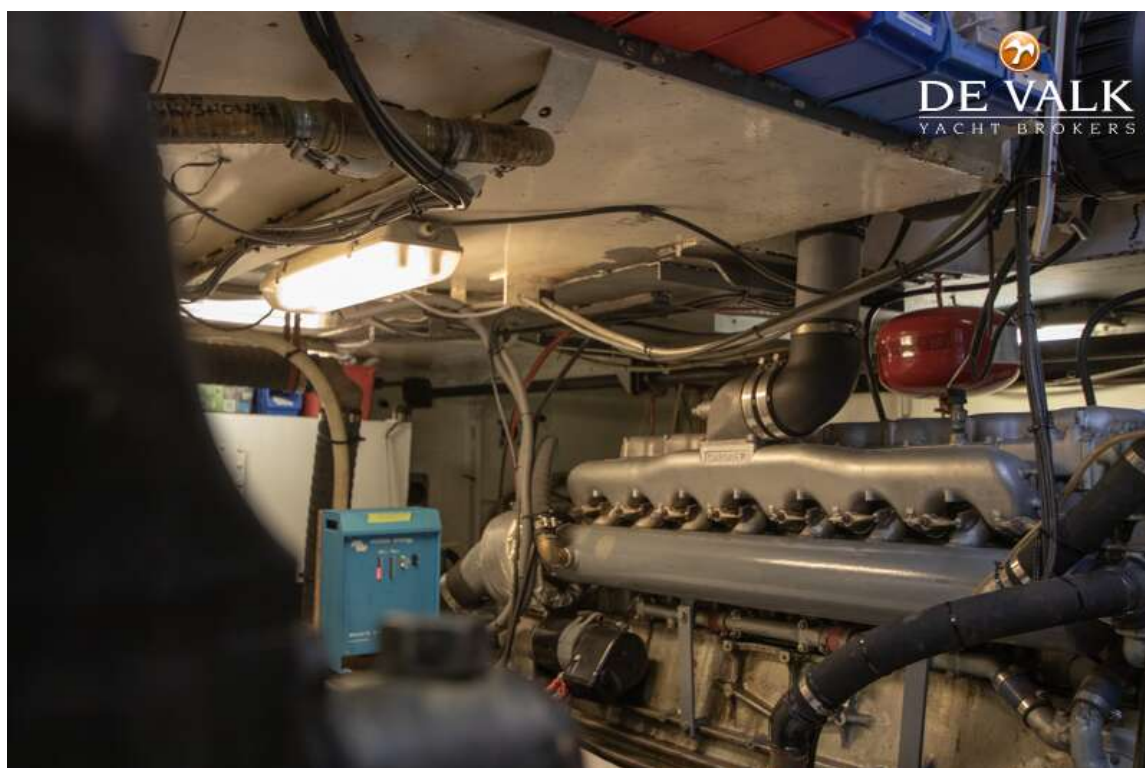
HOUSEBOAT WATERLOFT LUXEMOTOR SPITZ 38M



HOUSEBOAT WATERLOFT LUXEMOTOR SPITZ 38M



HOUSEBOAT WATERLOFT LUXEMOTOR SPITZ 38M



HOUSEBOAT WATERLOFT LUXEMOTOR SPITZ 38M



HOUSEBOAT WATERLOFT LUXEMOTOR SPITZ 38M

