



DE VALK
YACHT BROKERS



CUSTOM BUILT EXPLORER YACHT TIMELESS 80



DE VALK
YACHT BROKERS

CUSTOM BUILT EXPLORER YACHT TIMELESS 80

BROKER'S COMMENTS

Motor yacht Timeless, built by Alu Shipyard, was launched in 2018. Made entirely of aluminum, the vessel gives a transatlantic range with 12,700 liters of fuel. Two decks equipped with every luxury will make this voyage very comfortable. The fly bridge is perfect for enjoying the sun, accompanied by barbecue, large seating area and wet bar, protected by a retractable Bimini. If you want more information please contact us (new price 6.5 million excl VAT, photos January 2023). This yacht will be auctioned in cooperation with Troostwijk Auctions, for more information see : <http://bitly.ws/Aosk>

Arjen Hoeksma

SPECIFICATIONS

Dimensions	23.98 x 6.61 x 1.52 (m)	Builder	Alu Shipyard
Built	2018	Cabins	4
Material	Aluminium	Berths	8
Engine(s)	2 x Cummins QSB 6,7 diesel	Hp/Kw	2 x 425.00 (hp), 312.80 (kw)
Asking price	sold (VAT)	Lying	elsewhere / Not at sales office

CONTACT

Sales office	De Valk Dalmatia	Telephone	0031 653 299 244
Address	Ul. Velimira Skorpika 22000 Sibenik HR	E-mail	dalmatia@devalk.nl

DISCLAIMER

These particulars are given in good faith as supplied but cannot be guaranteed.



CUSTOM BUILT EXPLORER YACHT TIMELESS 80

GENERAL

Model	CUSTOM BUILT EXPLORER YACHT TIMELESS 80
Type	motor yacht
LOA (m)	23,98
Beam (m)	6,61
Draft (m)	1,52
Year built	2018
Launched	2018
Builder	Alu Shipyard
Country	Poland
Designer	Yacht Studio Strawinski
Displacement (t)	60,6
CE norm	B
Hull material	aluminium
Hull colour	grey Metallic
Hull shape	round-bilged
Superstructure material	Aluminium (AlMg4,5 Mn H111)
Deck material	aluminium
Deck finish	10 mm massive teak and on stairs, swimming platform & fly bridge
Superstructure deck finish	teak
Cockpit deck finish	teak
Dorades	yes
Window frame	yes
Window material	Grey tinted double-glazed & hardened security glass
Deckhatch	yes
Insulation	Entire ship equipped with RavaTherm, Rock and glass wool
Flybridge	1x steering seat, refrigerator, wash basin, electric grill
Flybridge cover	Wet bar, table and steering position
Flybridge cockpit cover	yes
Flybridge suncover	Electric Bimini
Radar arch	non collapsible



CUSTOM BUILT EXPLORER YACHT TIMELESS 80

Fuel tank (litre)	12,700
Fuel daytank (litre)	Stainless steel 260L in engine room
Level indicator (daytank)	yes
Freshwater tank (litre)	8,380, aluminium
Blackwater tank (litre)	5,530 (2 structural aluminium tanks), Rheinstrom FS3702 pump
Level indicator (blackwater)	yes
Wheel steering	Wills Ridley power steering
Inside helm position	yes
Flybridge helm position	yes
More info on hull	Aluminium (AlMg 4,5Mn H321)
More info on paintwork	AWL Grip 2 component
Extra info	Side doors in wheelhouse, galley and saloon

ACCOMMODATION

Cabins	4
Berths	8
Crew cabin	2
Crew berths	3
Interior	High quality American Walnut, fully spray-painted
Floor	Massive Oak in living room
Aft deck	yes
Headroom saloon (m)	2,20
Heating	Thermo 350 Diesel heater
Heating 2	Electric heaters bathrooms
Air-conditioning	All cabins and living, Webasto Marine 100,000 BTU
Navigation center	2x Multi touch monitor 19" Simrad MO19-T
Chart table	yes
Dining room	yes
Galley	yes
Countertop	Corian
Sink	yes



CUSTOM BUILT EXPLORER YACHT TIMELESS 80

Cooker	Induction Siemens
Oven	Siemens HT6B3MC0
Microwave/oven combi	1x Combi , 1x Microwave
Fridge	360 Liter Amica
Freezer	200 Liter Amica
Hot water system	3 x boiler (3 x 100ltr)
Water pressure system	yes
Dishwasher	yes
Owners cabin	French bed
Wardrobe	hanging/drawers/shelves
Bathroom	en suite
Toilet	yes
Toilet system	electric Planus
Guest cabin 1	French bed
Wardrobe	yes
Bathroom	en suite
Toilet	yes
Toilet system	electric Planus
Guest cabin 2	French bed
Wardrobe	hanging/drawers/shelves
Bathroom	en suite
Toilet	yes
Toilet system	electric Planus
Guest cabin 3	bunk bed
Bathroom	yes
Toilet	en suite
Shower	en suite
Guest cabin 4	bunk bed
Wardrobe	drawers and shelves
Bathroom	yes
Toilet	en suite
Toilet system	electric



CUSTOM BUILT EXPLORER YACHT TIMELESS 80

Shower	en suite
Crew cabin(s)	1 and two heads
Bathroom (crew)	yes
Toilet (crew)	yes
Toilet system	electric
Washing machine	Siemens IQ500
Flybridge	Music system, hydraulic crane tender (Opacmare 3048/31) 500kg
Wet bar	Outside on fly bridge in teak and wood
Extra info	Hans Grohe sanitary, electric heated windscreens (Webasto)
Extra info	All areas with led spots with dimmers

MACHINERY

No of engines	2
Make	Cummins
Type	QSB 6,7
HP	425
kW	312.80
Fuel	diesel
Year installed	2018
Maximum speed (kn)	12
Cruising speed (kn)	10,5
Engine hours	1200
Engine cooling system	yes
Drive	shaft
Engine controls	electrical
Gearbox	ZF 280IV reduction 2,556:1
Engine controls	electrical
Bowthruster	Electric, Side Power 285-48V
Gearbox	ZF
Exhaust	Halyard system



CUSTOM BUILT EXPLORER YACHT TIMELESS 80

Propeller type	Michigan Wheel Marine, shaft Stainless steel (duplex) 60mm
Propeller blades	5 blades (NiAlBr)
Propeller shaft material	stainless steel
Shaft lubrication	Water
Manual bilge pump	yes
Electric bilge pump	7x
Bilge alarm	yes
Generator	Fisher Panda 25 kVA
Running hours generator	1950
Generator 2	Fisher PAnda 25 kVA
Running hours generator 2	1950
Batteries	yes
Start battery	4x 12V 110Ah AGM Victron (2022)
Service battery	10x 12V 200Ah AGM Victron (2022)
Navigation Battery	4x 12V 200Ah AGM Victron
Generator battery	2x 12V 110Ah AGM Victron
Bowthruster battery	4x 12V 200Ah AGM Victron
Sternthruster battery	yes
Battery monitor	yes
Battery charger	6x Blue Power IP67 24/12V Victron, 1x Centauer 24/60 Victron
Inverter	2x Quattro Victron 24/8000/200-100/100
Shorepower	230 Volt 32 Amp
Insulation transformer	yes
Stabilizers	Side-Power SPS66 with vector fins
Extra info	Racor filters 2x
Extra info	WiFi Simrad Go Free, full yacht access

NAVIGATION

Compass	Simrad HS70 GPS
Compass on flybridge	yes
Electric compass	yes



CUSTOM BUILT EXPLORER YACHT TIMELESS 80

Multi control display	6x Smart Simrad IS42
Depth sounder	yes
Depth sounder/log	yes
Log	yes
Windset	yes
Repeater	yes
VHF	1x ICOM IC-M506 AIS, 1x ICOM IC-M423G C
VHF handheld	1x ICOM IC-GM 1600
Autopilot	Simrad AP70 control head, Simrad AC70 autopilot
Rudder angle indicator	Simrad RF25, 2 aluminium rudders
Radar	Simrad Halo-4 3ft pulse comprssion
GPS	NSO Evo2 Marineprocessor
Weather receiver	Furuno NX-700N
Wifi antenna	Simrad Go free
AIS receiver	Simrad class B NAIS-400S, antenna GPS i VHF CX4
AIS transponder	Simrad class B NAIS-400S, antenna GPS i VHF CX4
Camera	Engine room, corridors, aft and spoiler
Navigation lights	Hella Marine Led
Searchlight	High power halogen (Golight)
Extra info	Last service engines and generators 2022

EQUIPMENT

Fixed windscreen	5 arm wipers (Exalto)
Sprayhood	Fixed on fly brdige
Cockpit cover	yes
Bimini	Adjustable roller fly bridge
Cockpit cushions	yes
Cockpit table	yes
Cockpit chairs	yes
Bathing platform	Retractable platform with teak hydraulic Cariboni
Gangway	Hydraulic (Opacmare 1141/35)



CUSTOM BUILT EXPLORER YACHT TIMELESS 80

Deck shower	Hot & Cold water on swimming platform and fly bridge
Anchor	Electric winch Maxwell VC2500
Anchor chain	110 meters, 13mm chain
Capstan	3x electric (Maxwell VC2500)
Deck crane	On fly bridge
Sea railing	Stainless steel (316L)
Grab rail (superstructure)	stainless steel
Life raft	2
Wiper	yes
Horn	Air horn (Kahlenberg)
Radar reflector	yes
Fenders	Stainless steel holders (316L)
Mooring lines	yes
TV	3x Samsung OLED (salon, master and VIP cabin)
Satellite	Satellite TV System KVH TV5
Radio-cd player	Artsound ART 8,8 Multiroom, 8 zones with their own source
Cockpit speakers	yes
Speakers in salon	Artsound high end
Speakers in cabin	Artsound high end
Fire extinguisher	Seafire Marine suppression system engine room
Extinguisher in engine room	Engine room ventilation Gianesshi ELL500
Extra info	Underwater lights, docking lights
Extra info	Drinking water system in galley 316L



CUSTOM BUILT EXPLORER YACHT TIMELESS 80



CUSTOM BUILT EXPLORER YACHT TIMELESS 80



CUSTOM BUILT EXPLORER YACHT TIMELESS 80



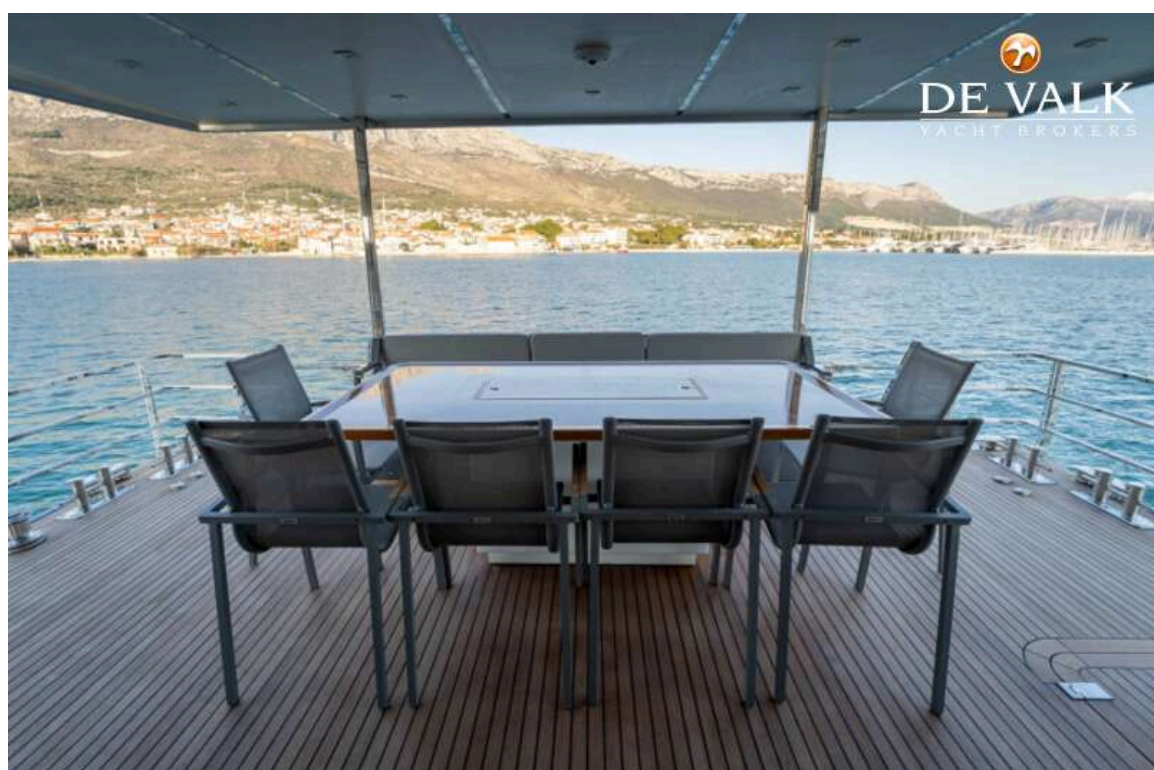
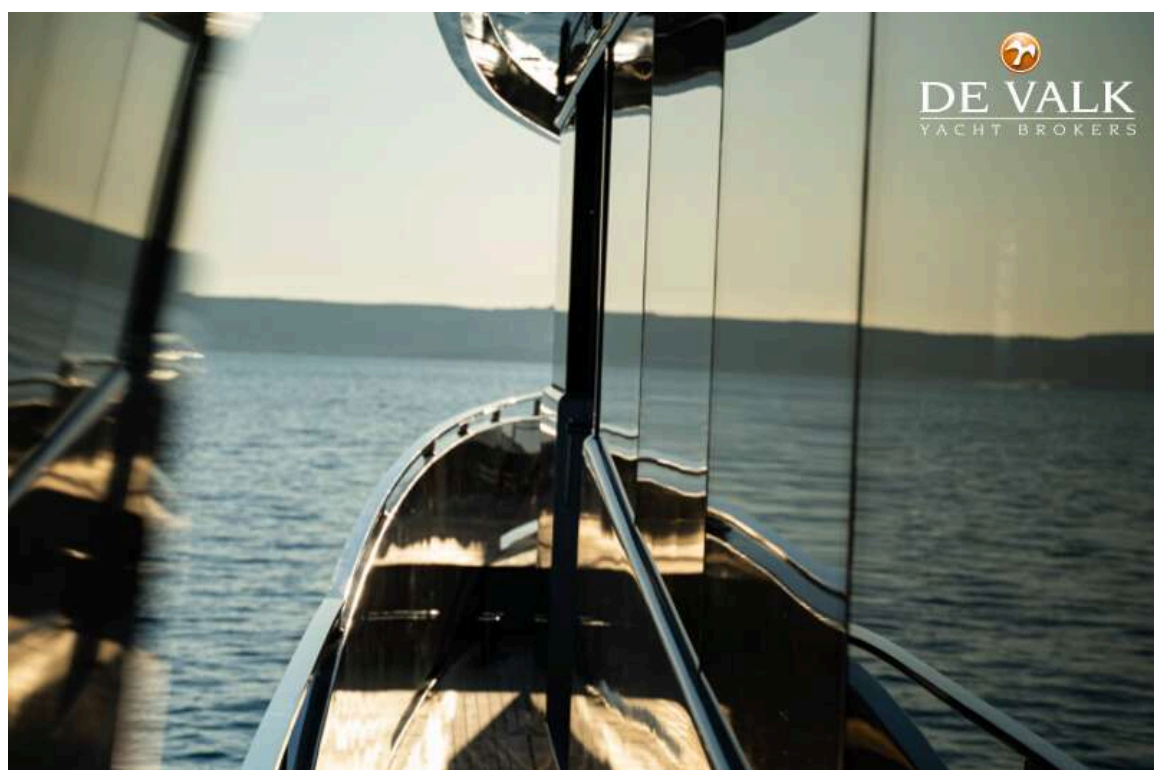
CUSTOM BUILT EXPLORER YACHT TIMELESS 80



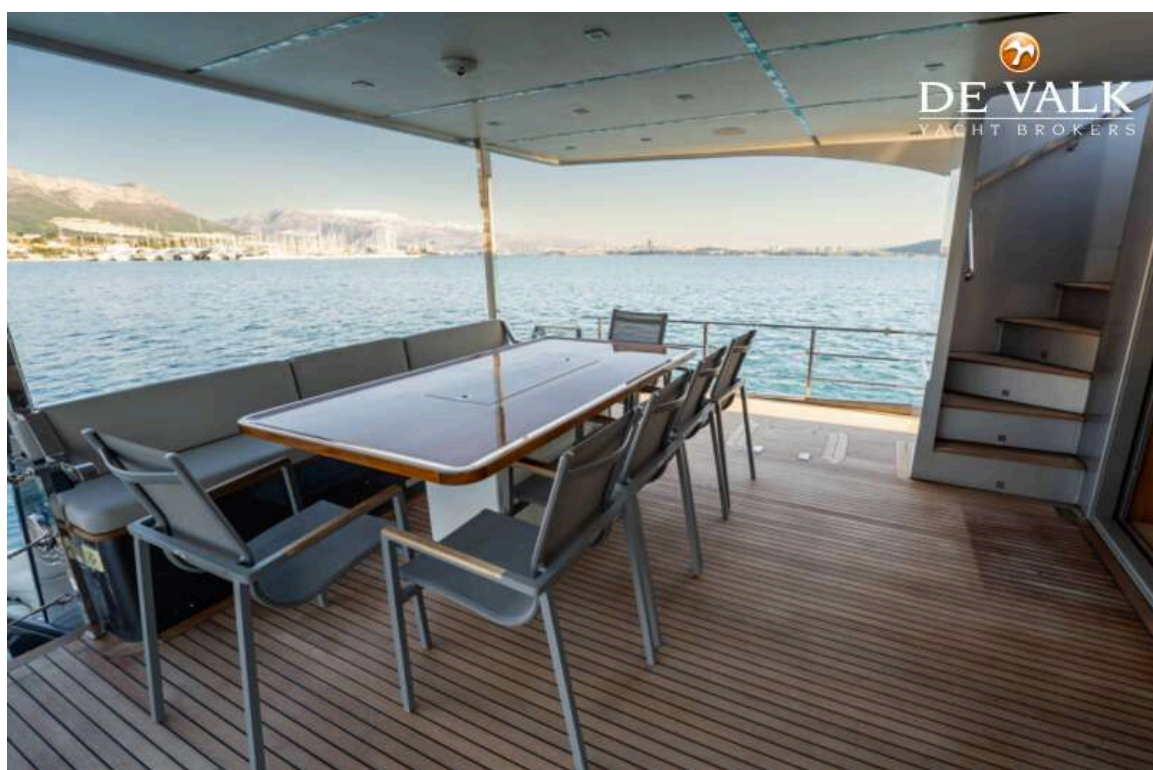
CUSTOM BUILT EXPLORER YACHT TIMELESS 80



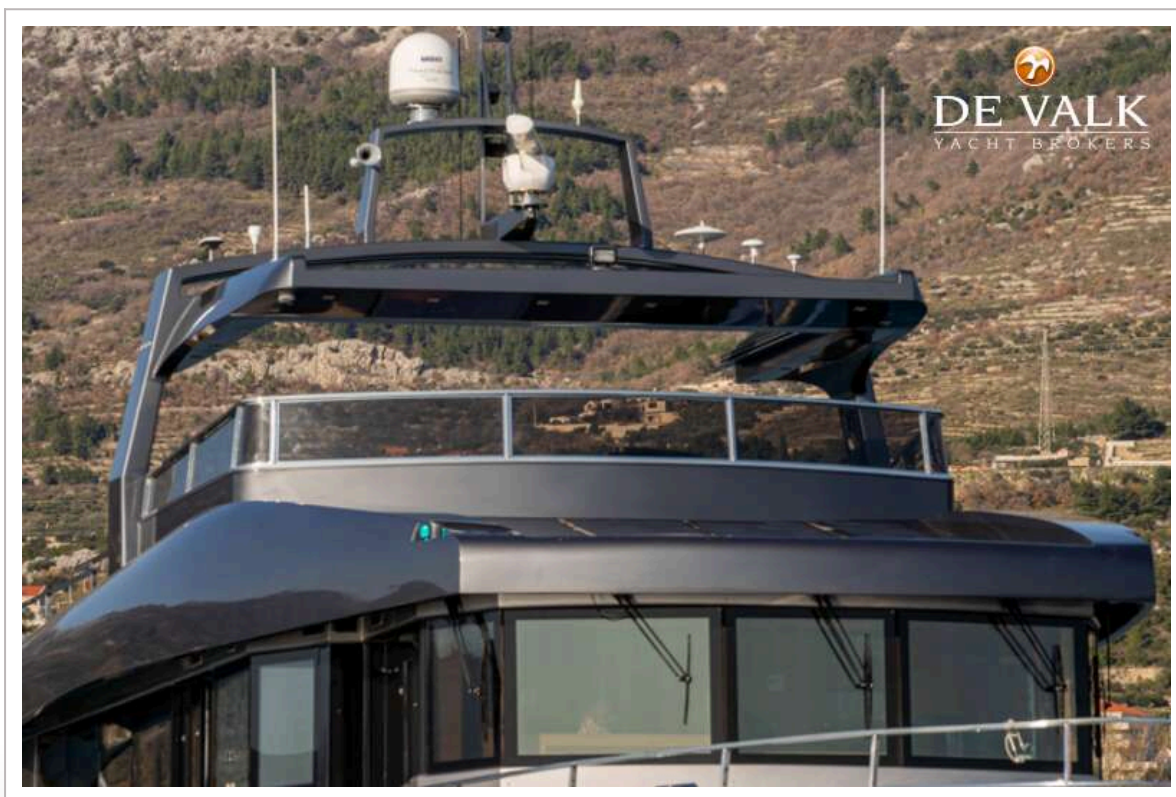
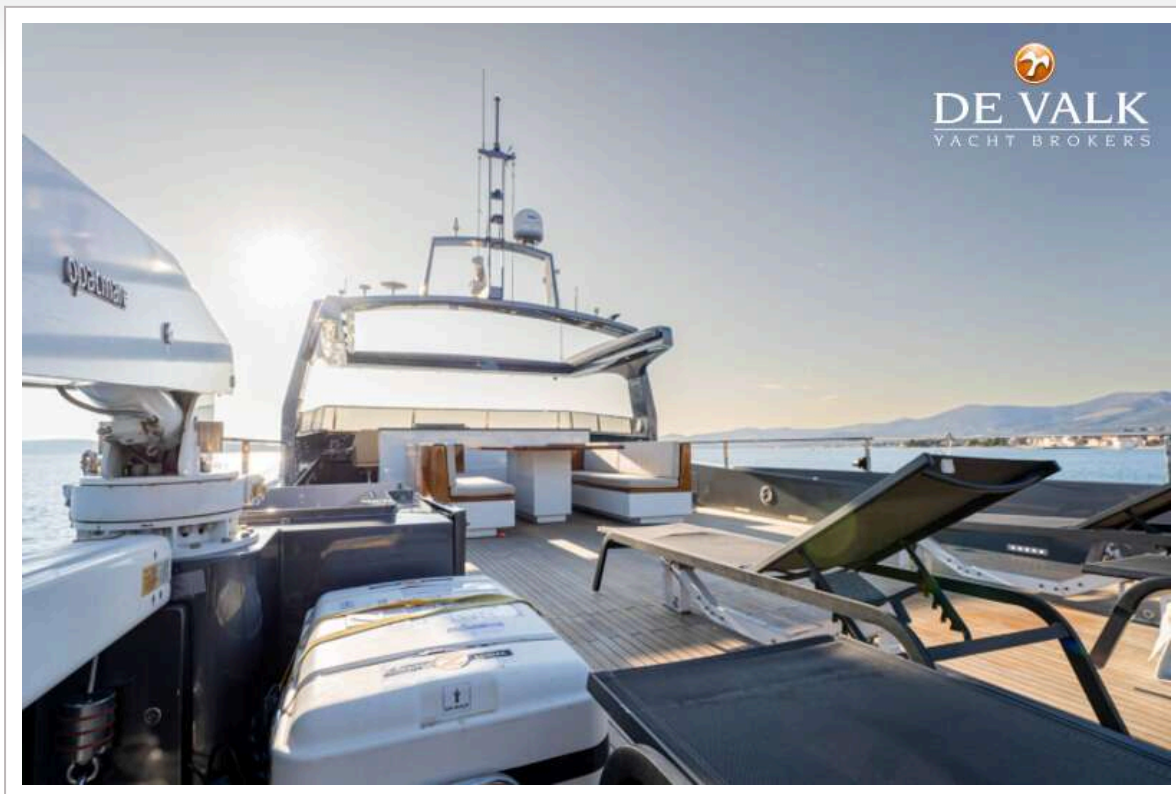
CUSTOM BUILT EXPLORER YACHT TIMELESS 80



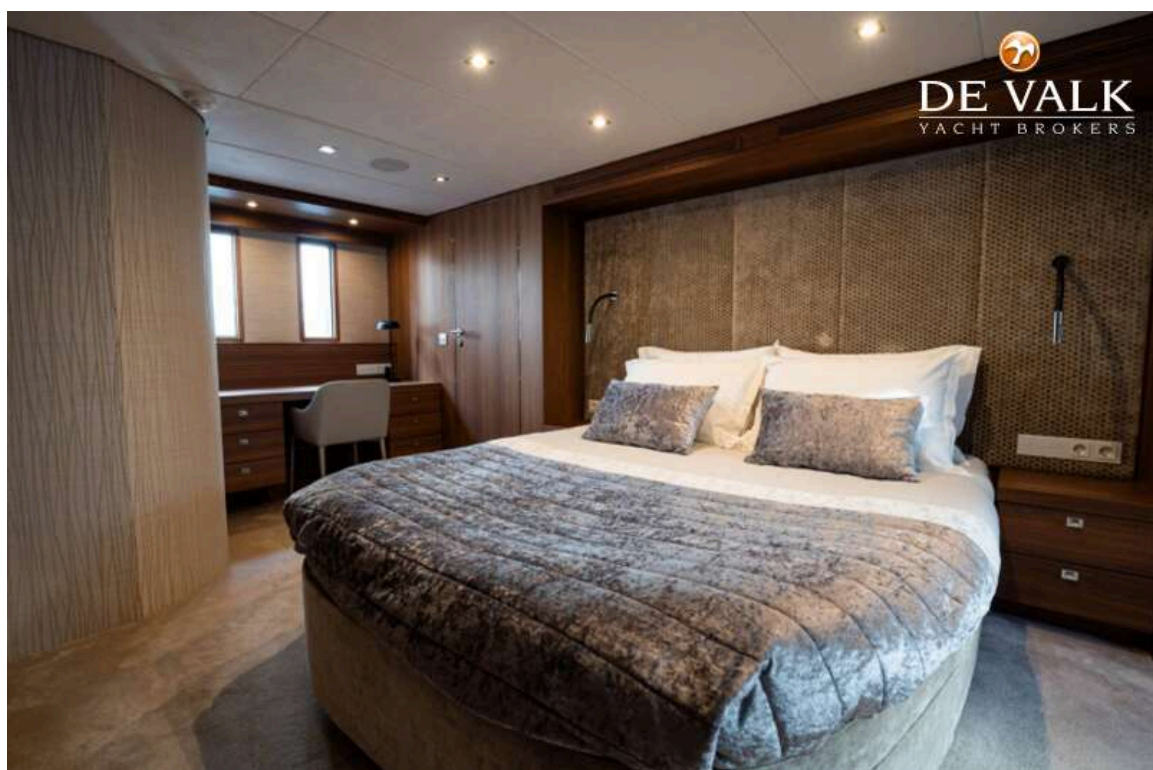
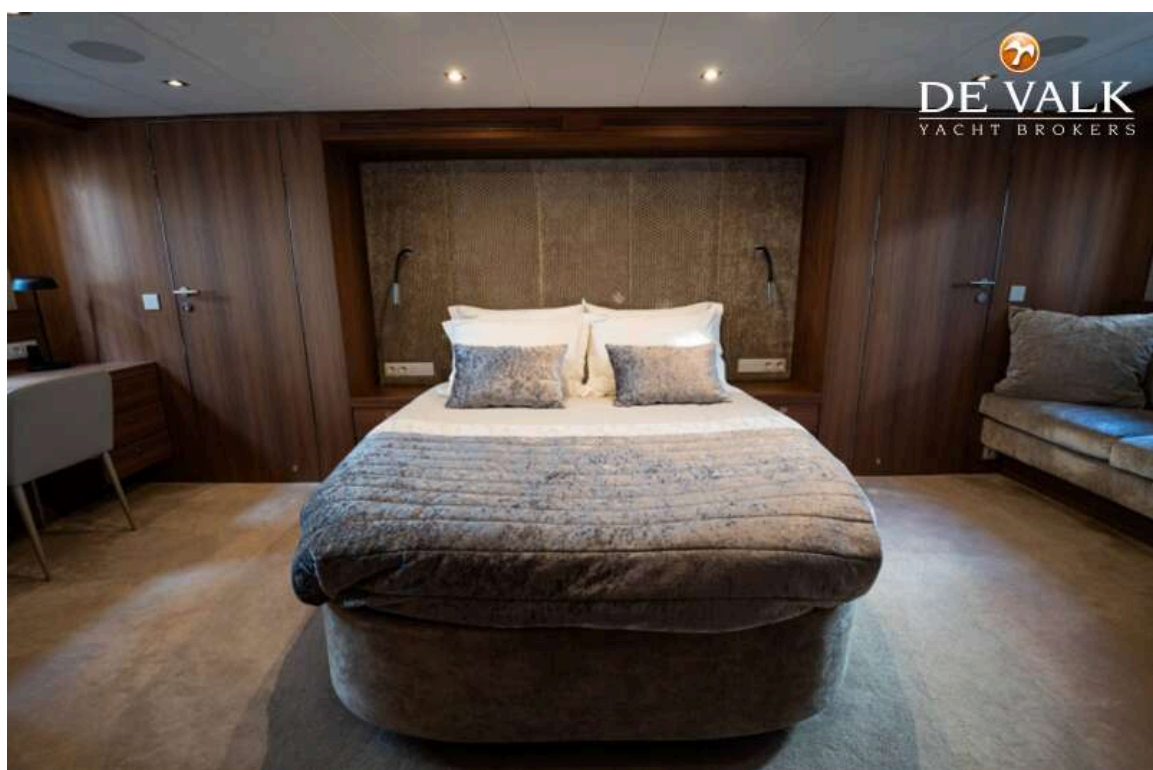
CUSTOM BUILT EXPLORER YACHT TIMELESS 80



CUSTOM BUILT EXPLORER YACHT TIMELESS 80



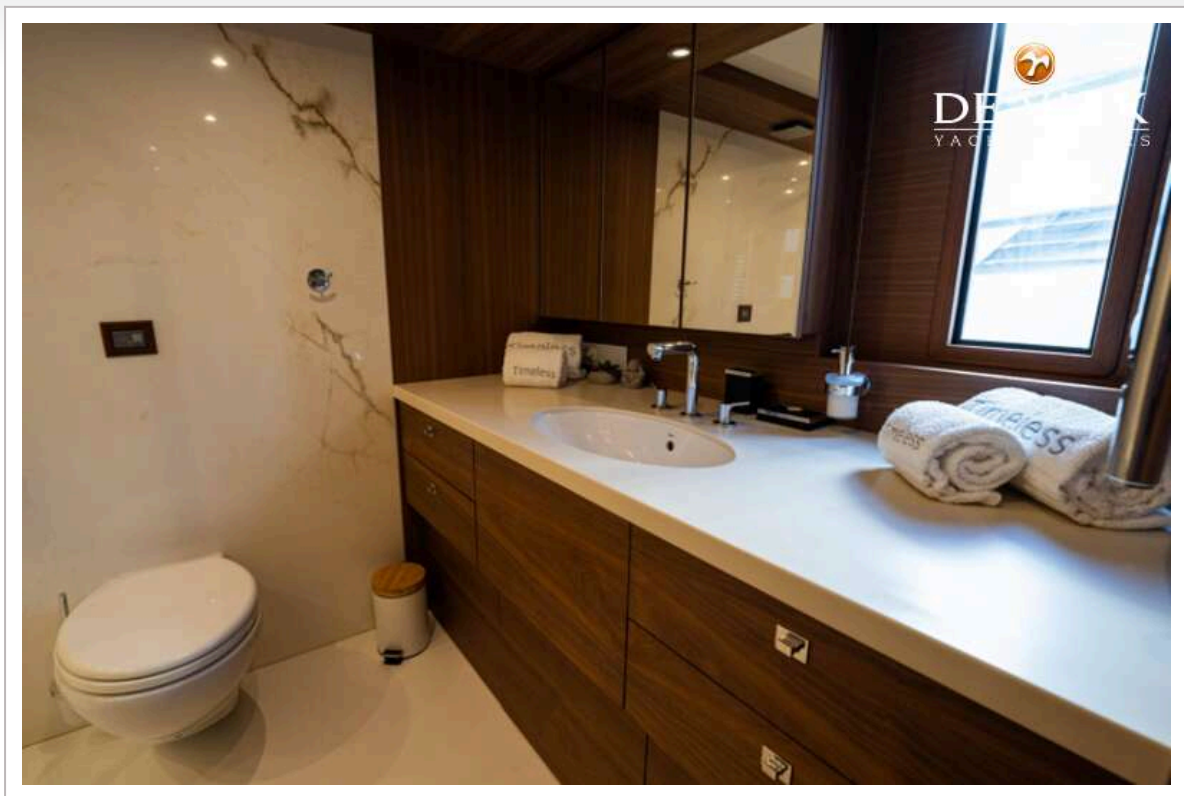
CUSTOM BUILT EXPLORER YACHT TIMELESS 80



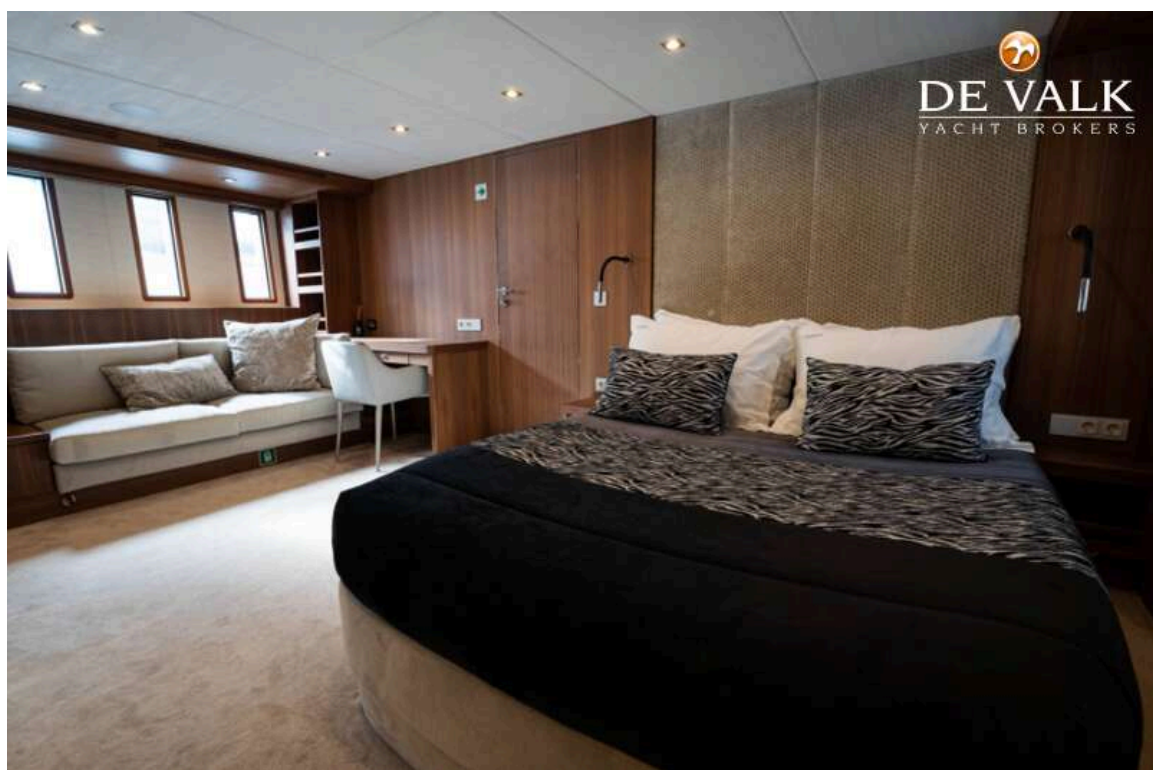
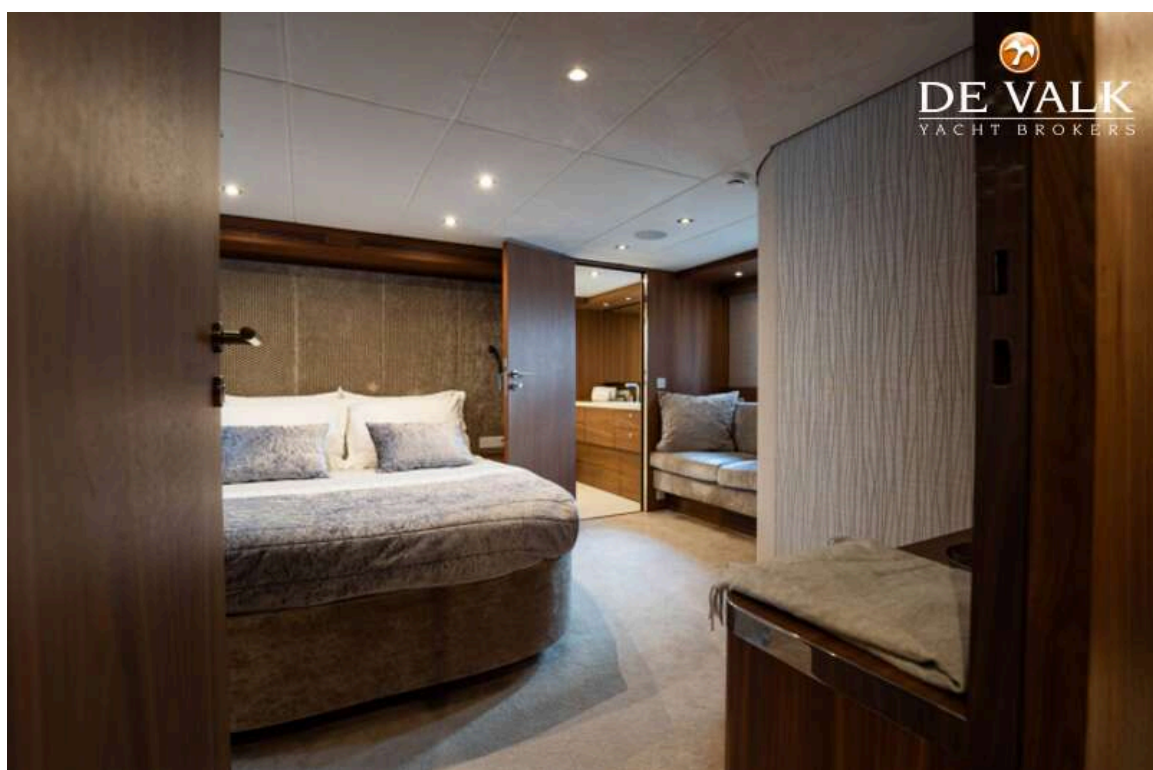
CUSTOM BUILT EXPLORER YACHT TIMELESS 80



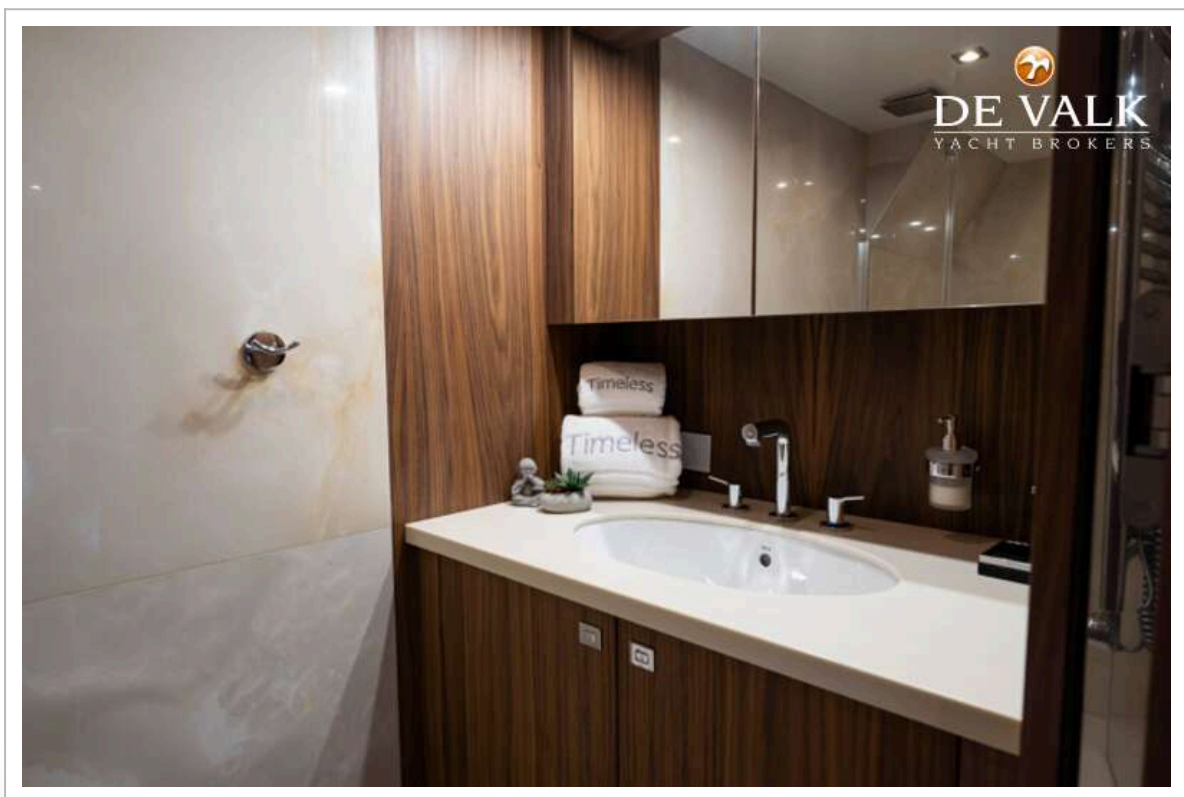
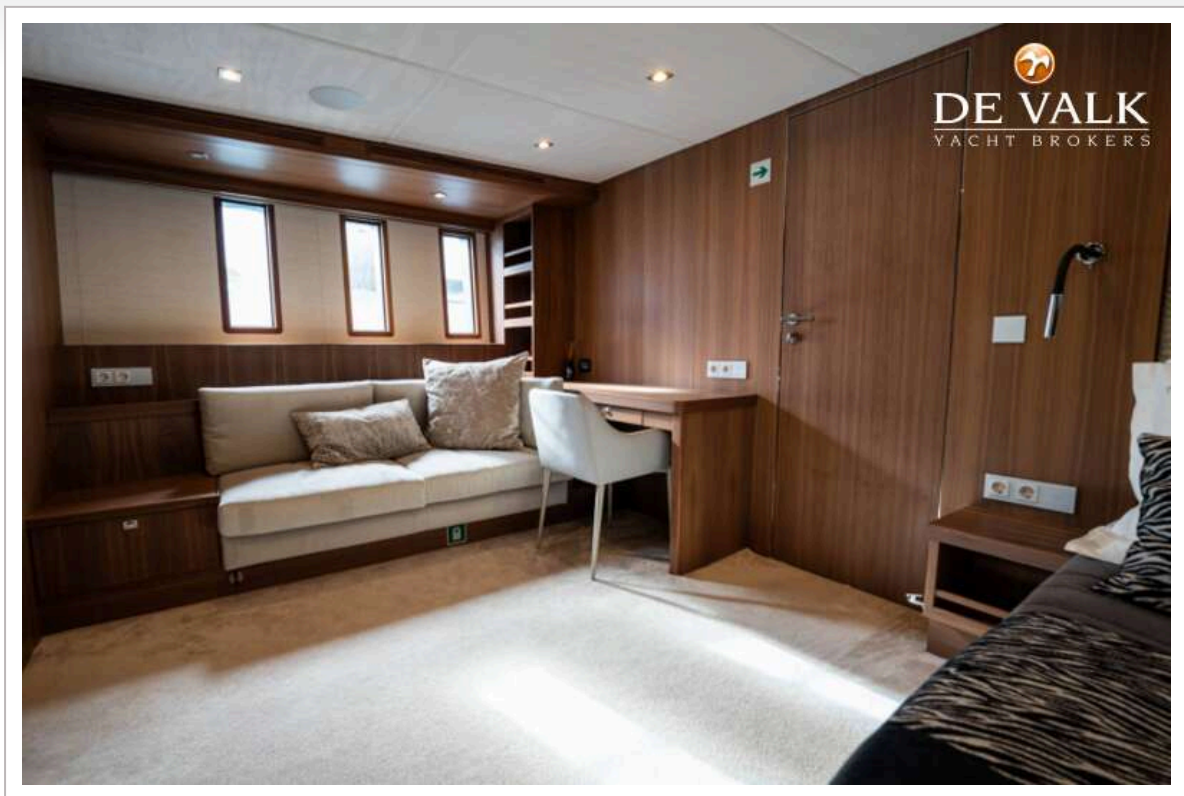
CUSTOM BUILT EXPLORER YACHT TIMELESS 80



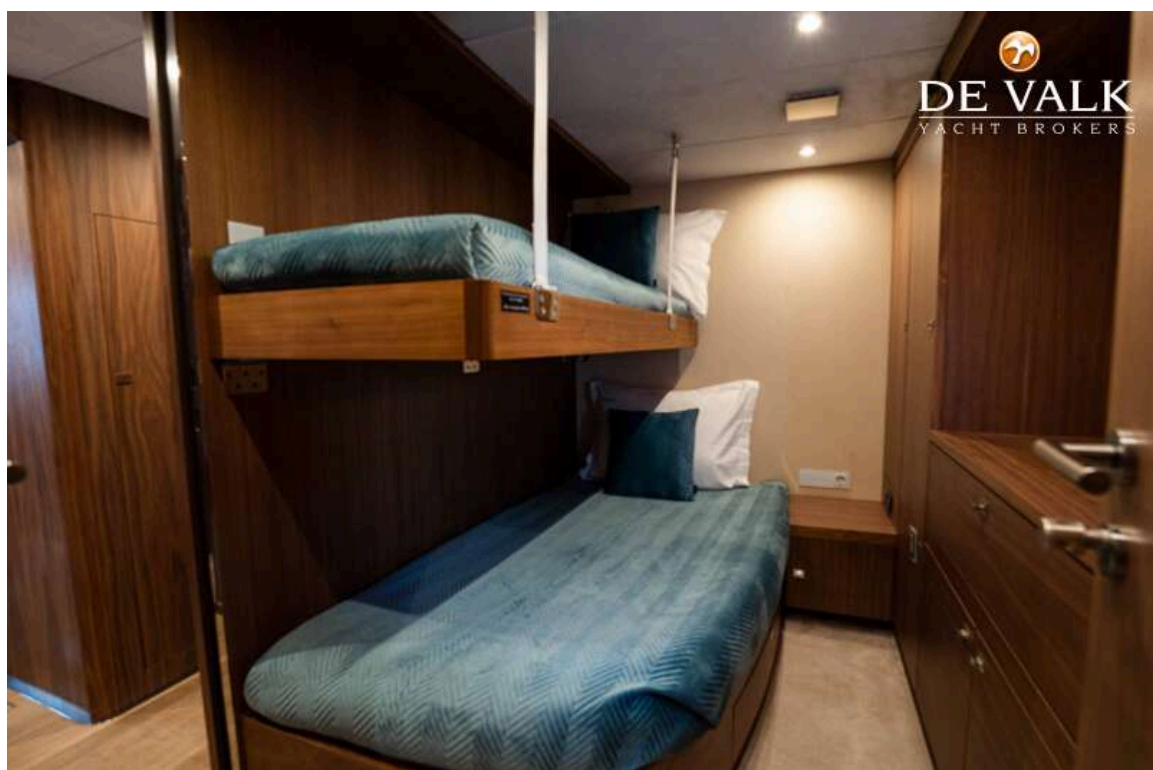
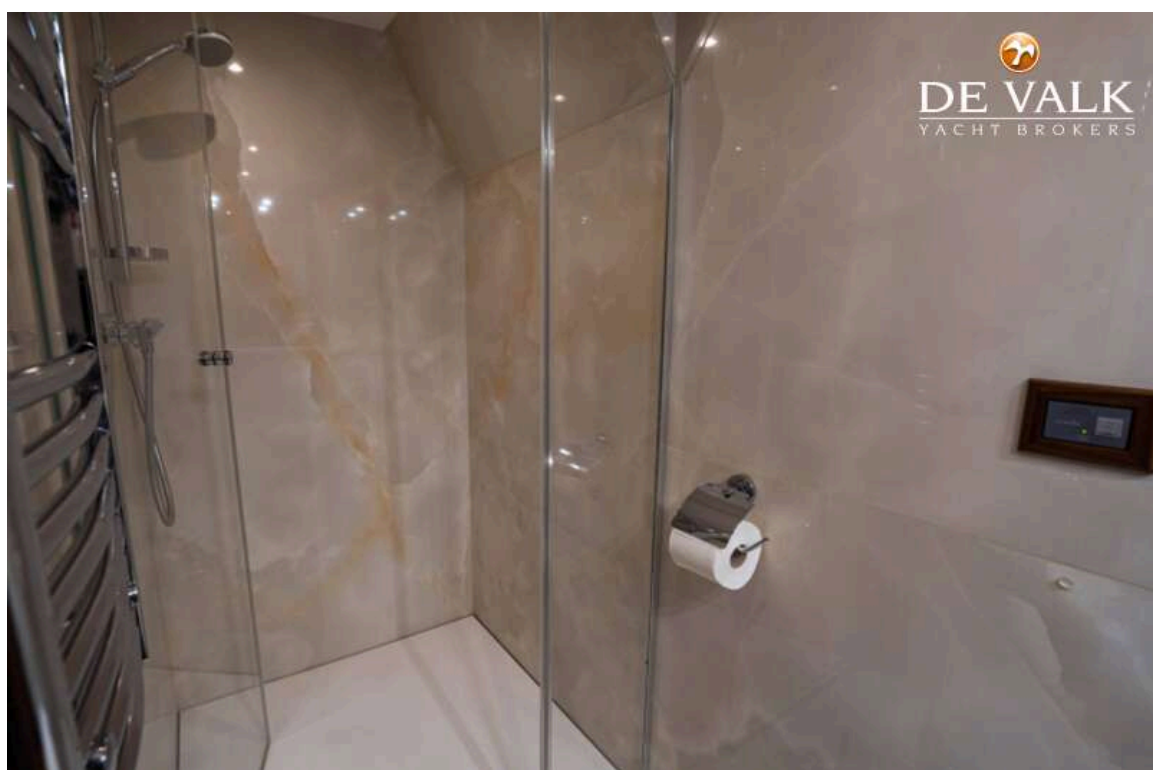
CUSTOM BUILT EXPLORER YACHT TIMELESS 80



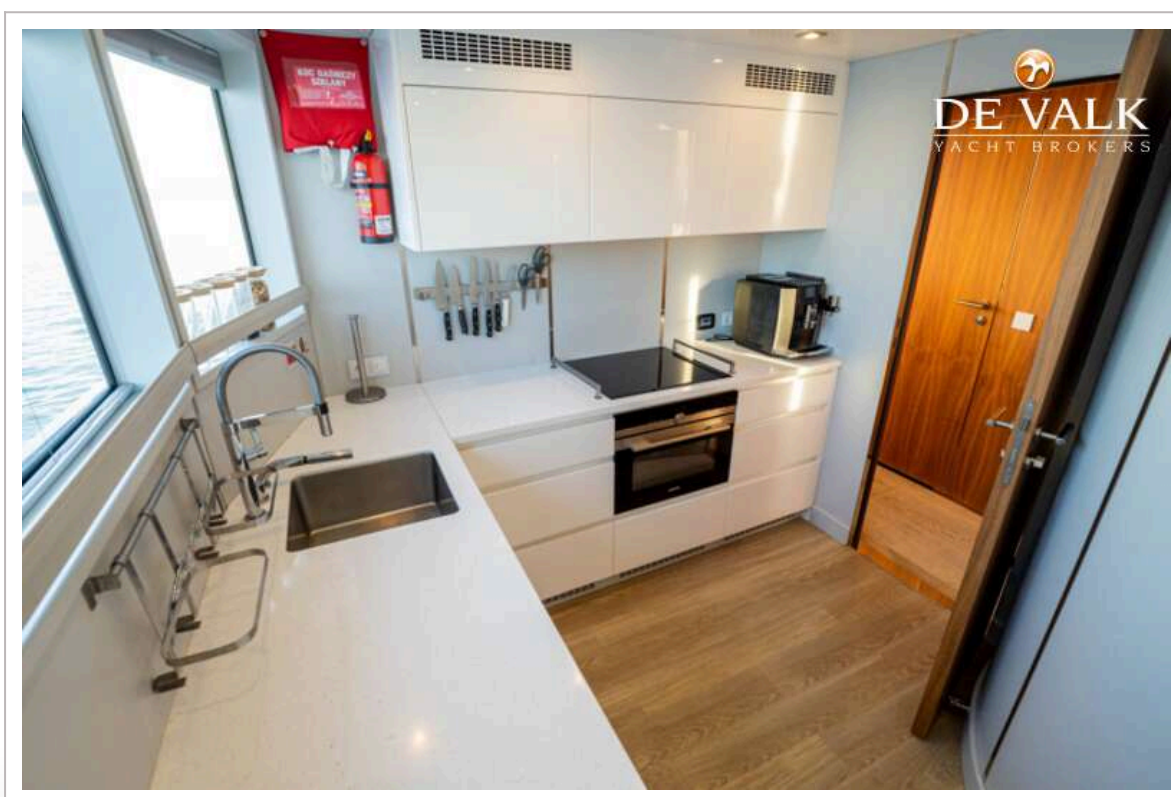
CUSTOM BUILT EXPLORER YACHT TIMELESS 80



CUSTOM BUILT EXPLORER YACHT TIMELESS 80



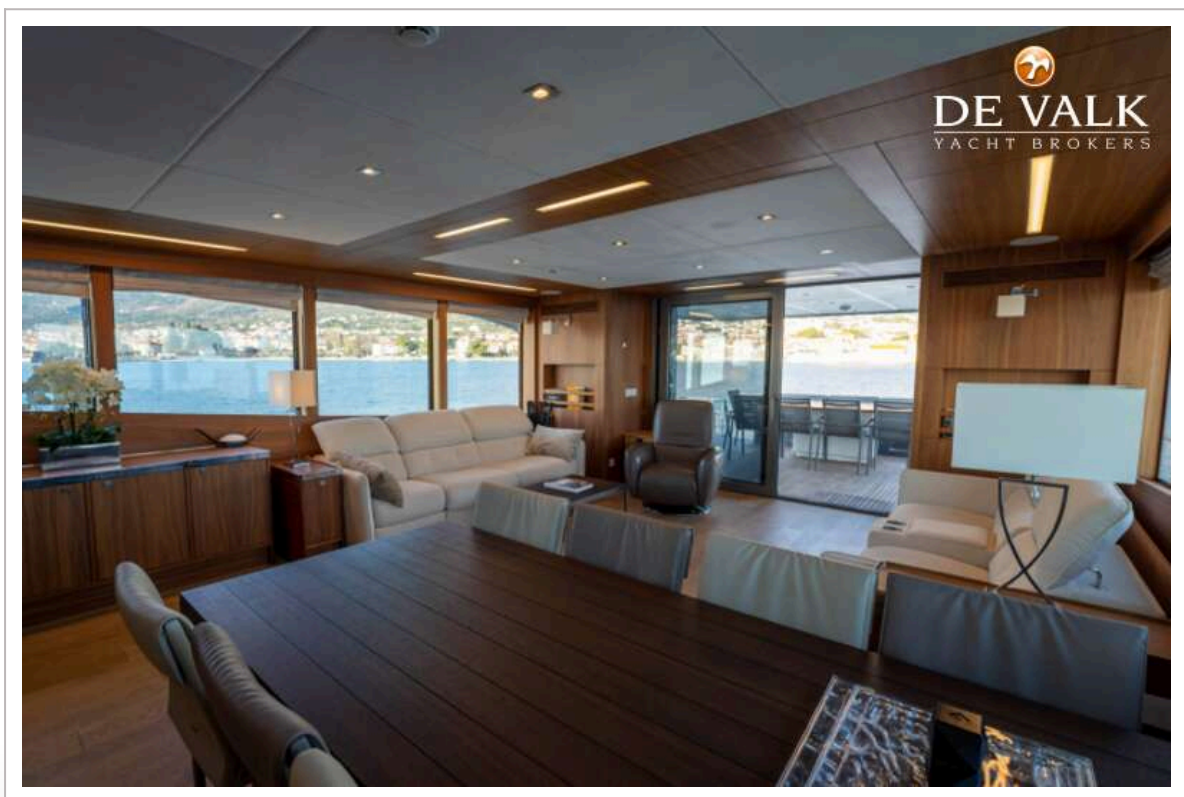
CUSTOM BUILT EXPLORER YACHT TIMELESS 80



CUSTOM BUILT EXPLORER YACHT TIMELESS 80



CUSTOM BUILT EXPLORER YACHT TIMELESS 80



CUSTOM BUILT EXPLORER YACHT TIMELESS 80

