



DE VALK
YACHT BROKERS



MULDER 59 CONVERTIBLE HARD TOP



DE VALK
YACHT BROKERS

MULDER 59 CONVERTIBLE HARD TOP

BROKER'S COMMENTS

Built in 2006, this Mulder 59 Convertible underwent a refit in 2020. For example, a fixed roof was expertly put on the vessel. This family boat is ideal for longer trips. The tender garage allows for neat storage of the tender (Highfield 310). This ship has numerous options and is very well maintained by her current owner (with track record).

Sjoerd Paddenburg

SPECIFICATIONS

Dimensions	18.05 x 4.90 x 1.45 (m)	Builder	Mulder Shipyard
Built	2006	Cabins	3
Material	Aluminium	Berths	6
Engine(s)	2 x Caterpillar 456 diesel	Hp/Kw	2 x 456.00 (hp), 335.62 (kw)
Asking price	sold (VAT)	Lying	at sales office

CONTACT

Sales office	De Valk Loosdrecht B.V.	Telephone	+31 (0)35 582 90 30
Address	't Breukeleveense Meentje 6 1231LM Loosdrecht / Wijdmeren NL	E-mail	loosdrecht@devalk.nl

DISCLAIMER

These particulars are given in good faith as supplied but cannot be guaranteed.



MULDER 59 CONVERTIBLE HARD TOP

GENERAL

Model	MULDER 59 CONVERTIBLE HARD TOP
Type	motor yacht
LOA (m)	18,05
Beam (m)	4,90
Draft (m)	1,45
Air draft (m)	5,60
Headroom (m)	2,00
Year built	2006
Builder	Mulder Shipyard
Country	The Netherlands
Designer	Guido De Groot/Mulder Shipyard
Displacement (t)	30
CE norm	B
Hull material	aluminium
Hull colour	grey
Hull shape	V-shaped hull
Superstructure material	aluminium And wood
Rubbing strake	stainless steel
Deck material	aluminium
Deck finish	teak
Superstructure deck finish	paint
Cockpit deck finish	teak
Window frame	Laminated in superstructure
Window material	glass Tinted (wrap)
Deckhatch	New 2024
Portholes	stainless steel 12x
Insulation	foam PU
Mast can be lowered	electric
Fuel tank (litre)	3500 (over 2 tanks)
Level indicator (fuel tank)	yes



MULDER 59 CONVERTIBLE HARD TOP

Freshwater tank (litre)	1500 with anti-limescale system
Level indicator (freshwater)	yes
Blackwater tank (litre)	350
Level indicator (blackwater)	yes
Wheel steering	hydraulic
Inside helm position	yes
Extra info	Hard top has been placed during refit in 2020

ACCOMMODATION

Cabins	3
Berths	6
Interior	teak
Floor	teak And carpet
Open cockpit	yes
Pilot house/deck saloon	yes
Saloon	yes
Headroom saloon (m)	+/- 2,00
Sliding roof	electric
Heating	CLB Marine
Air-conditioning	single cycle airco Heinen and Hopman
Dinette	In wheelhouse
Sliding door to cockpit	And to salon
Opening door to cockpit	Foldable
Galley	yes
Countertop	corian
Sink	stainless steel
Cooker	induction Siemens 4 burners
Extractor	Siemens
Microwave/oven combi	Siemens
Fridge	1x Isotherm and drawer in wheelhouse + 1x Siemens in galley
Freezer	1x in engine room



MULDER 59 CONVERTIBLE HARD TOP

Wine cooler	Two electrical wine coolers with LED
Hot water system	220V + engine Boiler
Water pressure system	electrical
Dishwasher	Siemens
Ice maker	Unold
Owners cabin	double bed
Bed length (m)	2,00
Wardrobe	hanging and shelves
Bathroom	en suite
Toilet	en suite
Toilet system	electric Tecma
Wash basin	in the bathroom
Shower	en suite
Guest cabin 1	twin single
Bed length (m)	2
Wardrobe	hanging/drawers/shelves
Bathroom	shared
Toilet	shared
Toilet system	electric Tecma
Wash basin	in the bathroom
Shower	shared
Guest cabin 2	twin single
Bed length (m)	2
Wardrobe	hanging/drawers/shelves
Washing machine	yes
Tender garage	With remote and helm position control
Extra info	Two extra garages on the side for storage

MACHINERY

No of engines	2
Make	Caterpillar



MULDER 59 CONVERTIBLE HARD TOP

Type	456
HP	456
kW	335.62
Fuel	diesel
Maximum speed (kn)	21
Engine hours	2137
Engine cooling system	freshwater heat exchanger
Drive	shaft
Engine controls	electrical New displays
Gearbox	hydraulic TwinDisc
Bowthruster	electric 25HP Side Power
Propeller type	fixed
Propeller shaft material	stainless steel
Shaft lubrication	water
Electric bilge pump	4x
Electrical installation	24V/220V
Generator	wet exhaust Mastervolt Whisper 12000 Ultra
Start battery	2x 165Ah
Service battery	4x 200Ah (2021)
Battery monitor	Mastervolt
Battery charger	Mastervolt
Inverter	Mastervolt Mass Sine 24/2500
Shorepower	with cable Mastervolt
Trimtabs	yes
Extra info	Hydronautica remote control for easy docking

NAVIGATION

Multi control display	Raymarine Axiom (2022)
Depth sounder	Raymarine (2022)
VHF	Raymarine (2022)
Autopilot	Raymarine (2022)



MULDER 59 CONVERTIBLE HARD TOP

Rudder angle indicator	On autopilot Raymarine
GPS	yes
Plotter/GPS	Raymarine
AIS transceiver	Raymarine
Camera	Front (augmented reality) and rear (Raymarine)
Navigation lights	yes
Searchlight	Jabsco
Extra info	All Raymarine equipment has been replaced in 2022

EQUIPMENT

Fixed hardtop	yes
Bimini	On aft deck
Sun awning	yes
Cockpit cushions	With cover
Cockpit table	With cover
Cockpit chairs	2x
Bathing platform	yes
Boarding ladder	stainless steel To be fit on gunwale and bathing platform
Gangway	Besenzoni - integrated in the hull
Anchor	Bruce
Anchor chain	50 meter
Windlass	hydraulic Muir VCR2500
Deck wash	Front and rear
Dinghy	rigid inflatable Highfield 310
Outboard	15HP Yamaha (2023)
Sea railing	stainless steel
Railing side opening gates	2 sides
Wiper	3x Exalto
Horn	air pressure
Fenders	yes
Mooring lines	yes



MULDER 59 CONVERTIBLE HARD TOP

TV	In the saloon on lift and galley
Radio	Fusion MS-RA70N
Surround Sound System	yes
Speakers in salon	yes
Speakers in cabin	yes



MULDER 59 CONVERTIBLE HARD TOP



MULDER 59 CONVERTIBLE HARD TOP



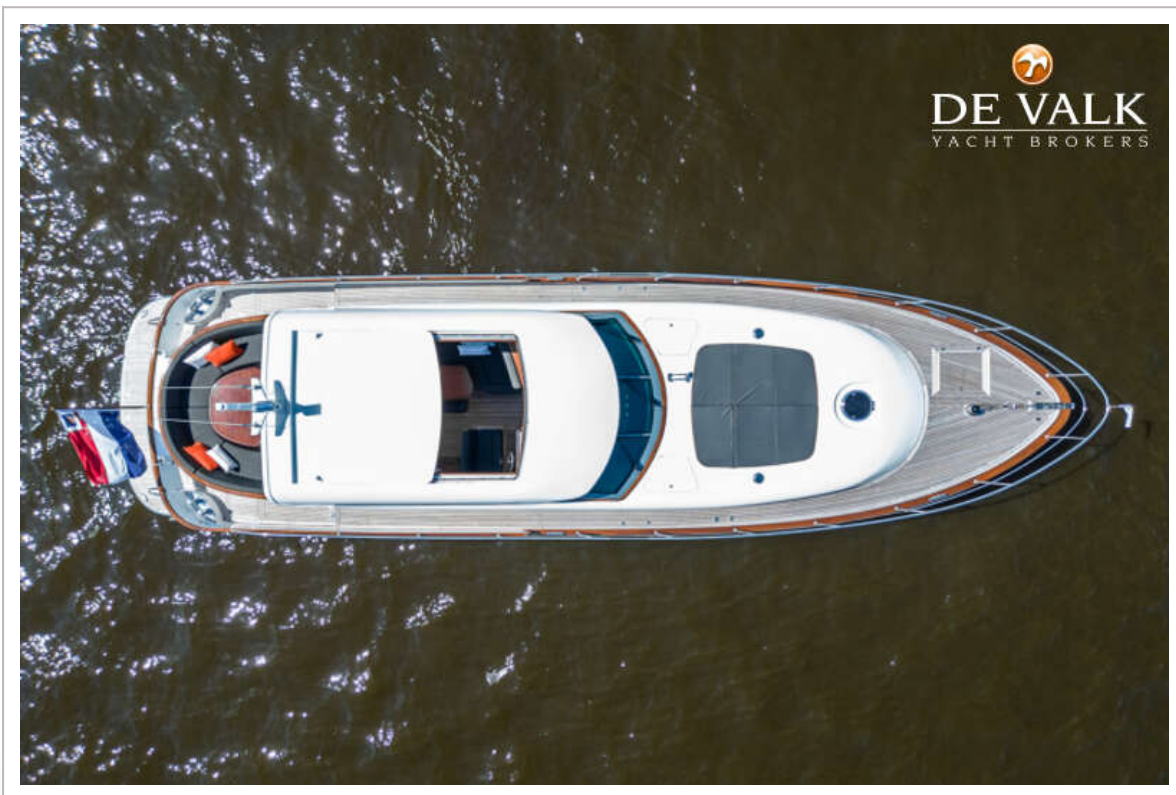
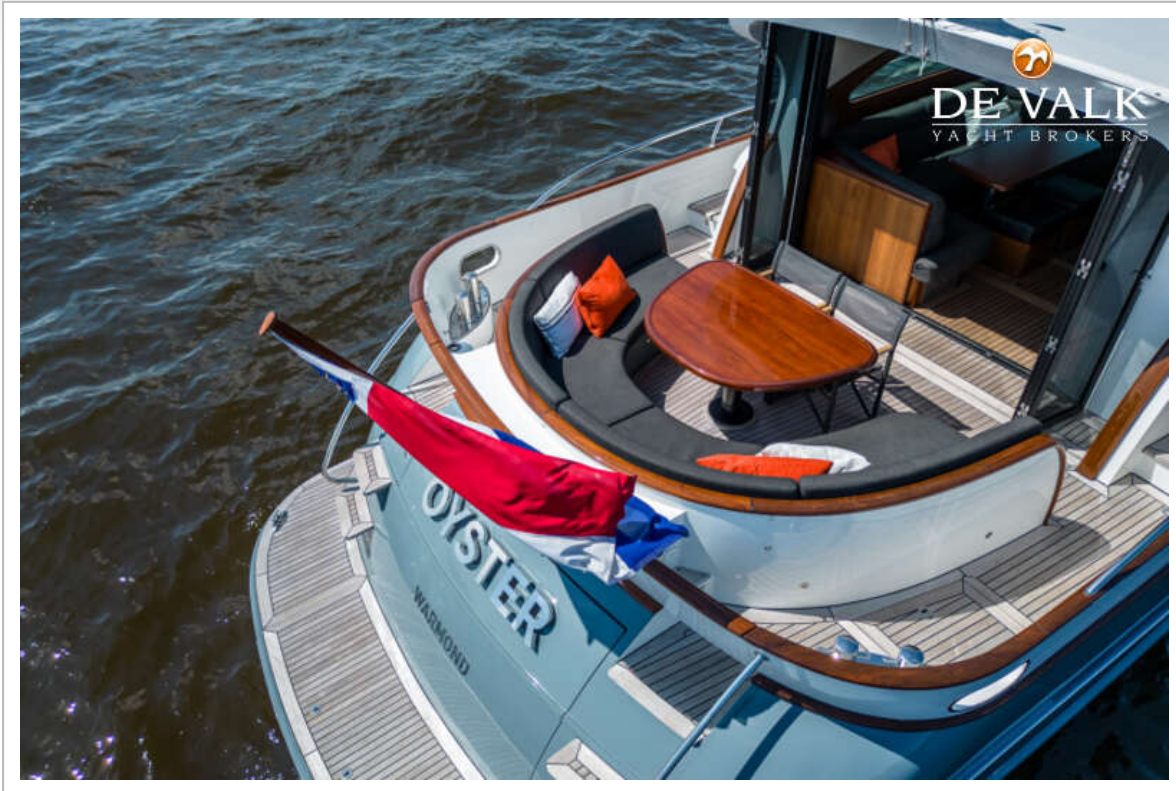
MULDER 59 CONVERTIBLE HARD TOP



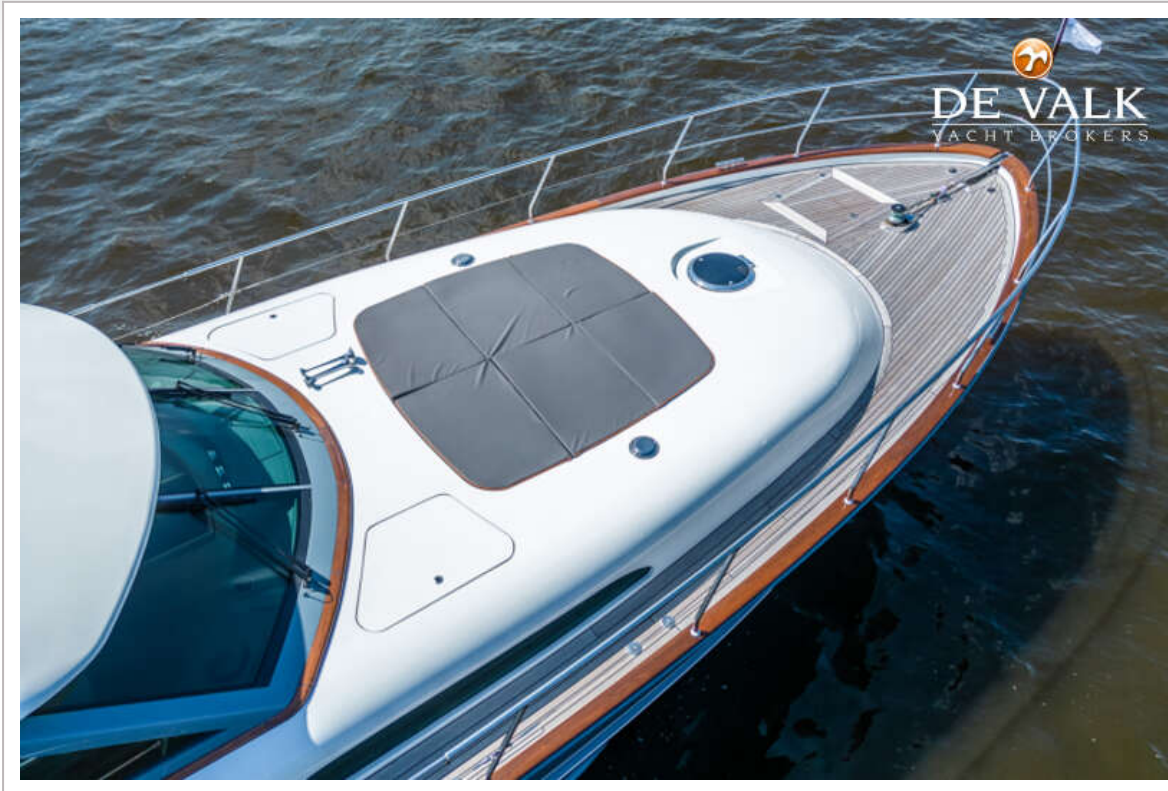
MULDER 59 CONVERTIBLE HARD TOP



MULDER 59 CONVERTIBLE HARD TOP



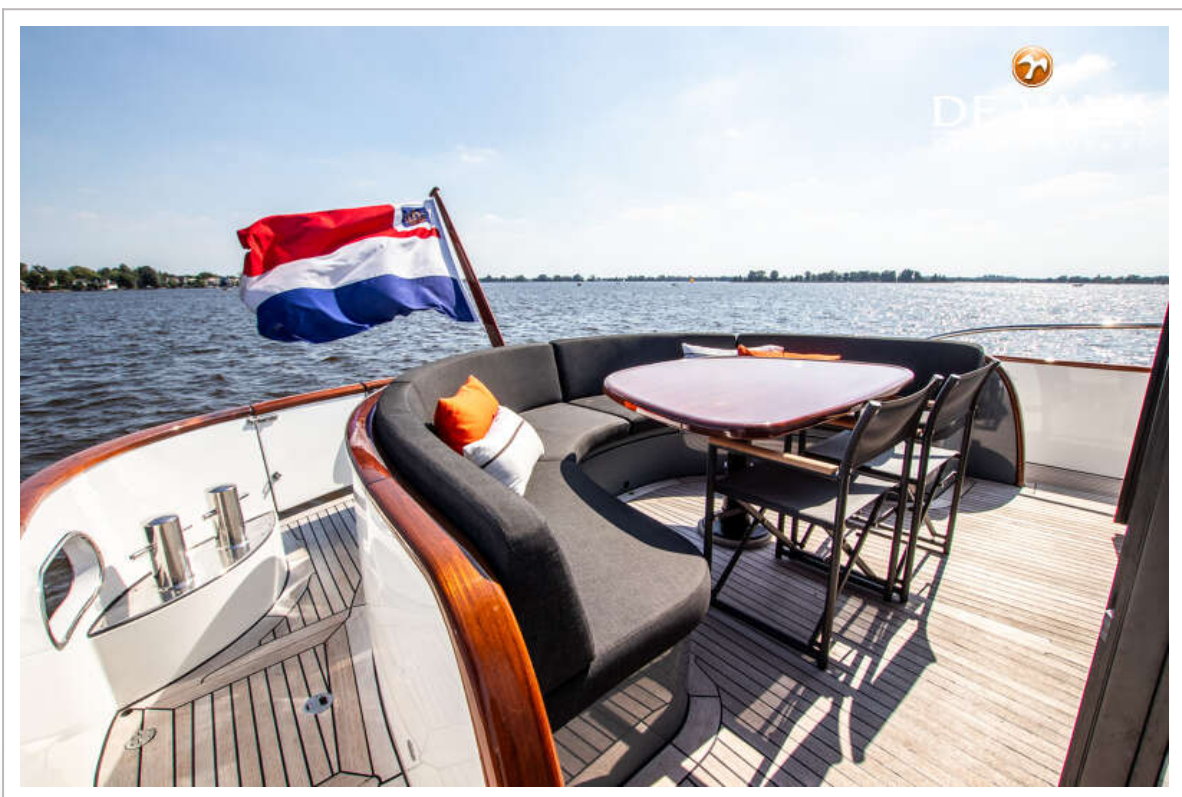
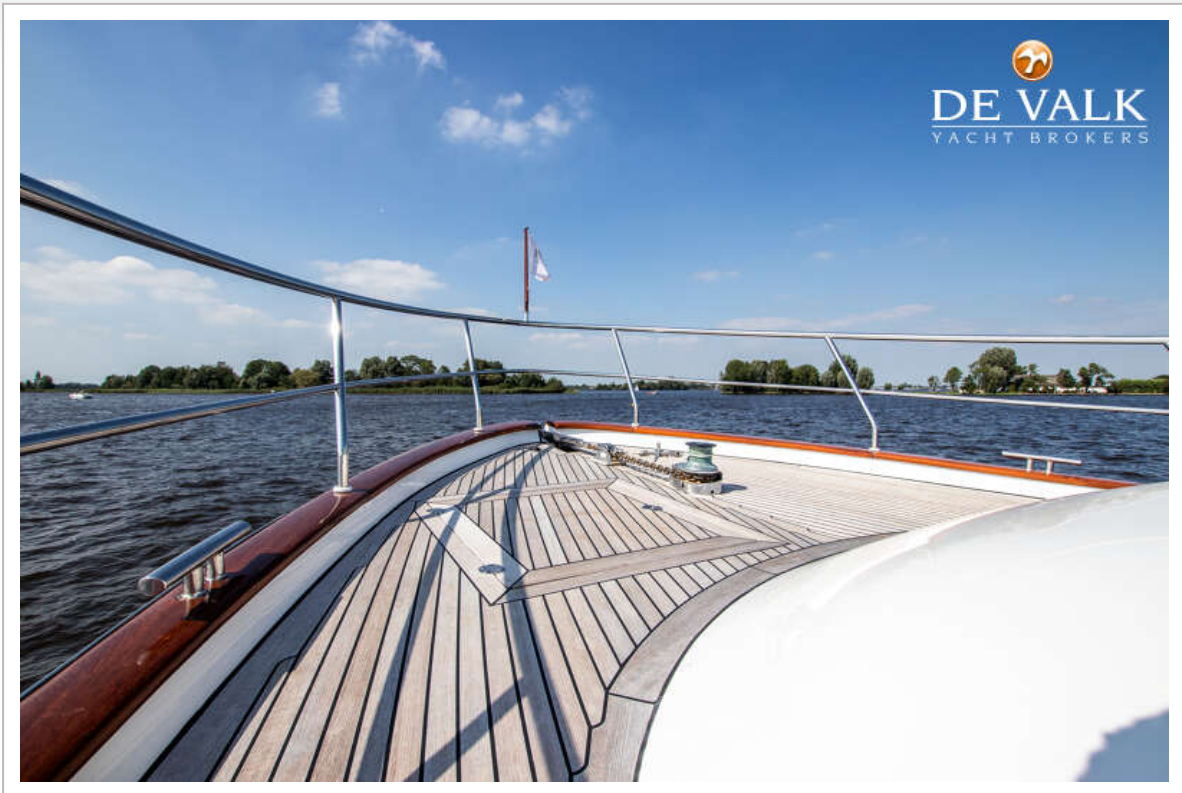
MULDER 59 CONVERTIBLE HARD TOP



MULDER 59 CONVERTIBLE HARD TOP



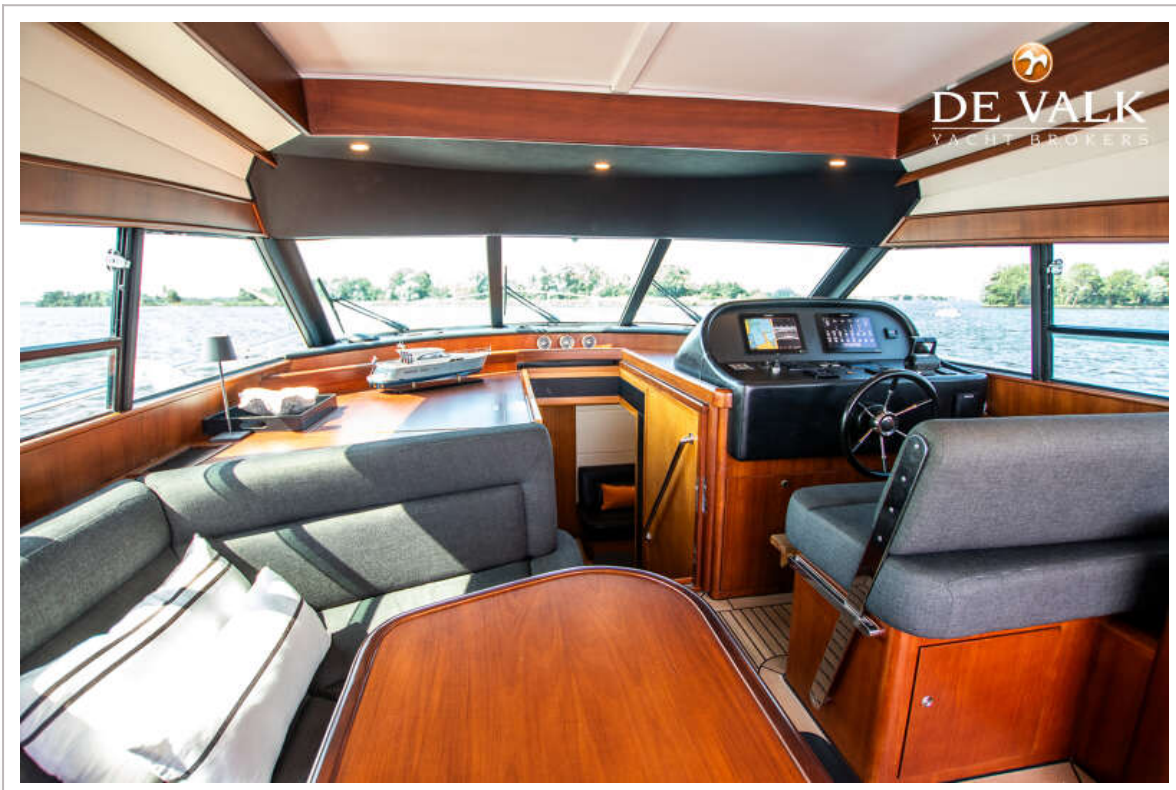
MULDER 59 CONVERTIBLE HARD TOP



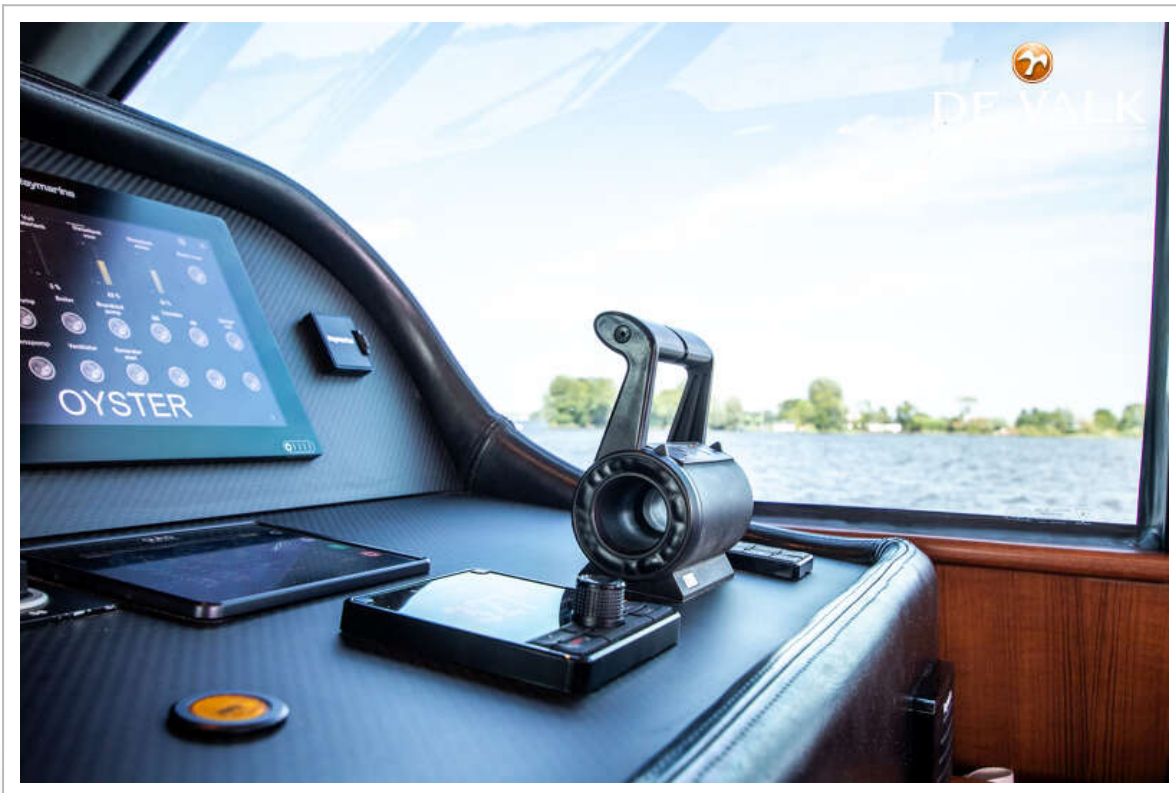
MULDER 59 CONVERTIBLE HARD TOP



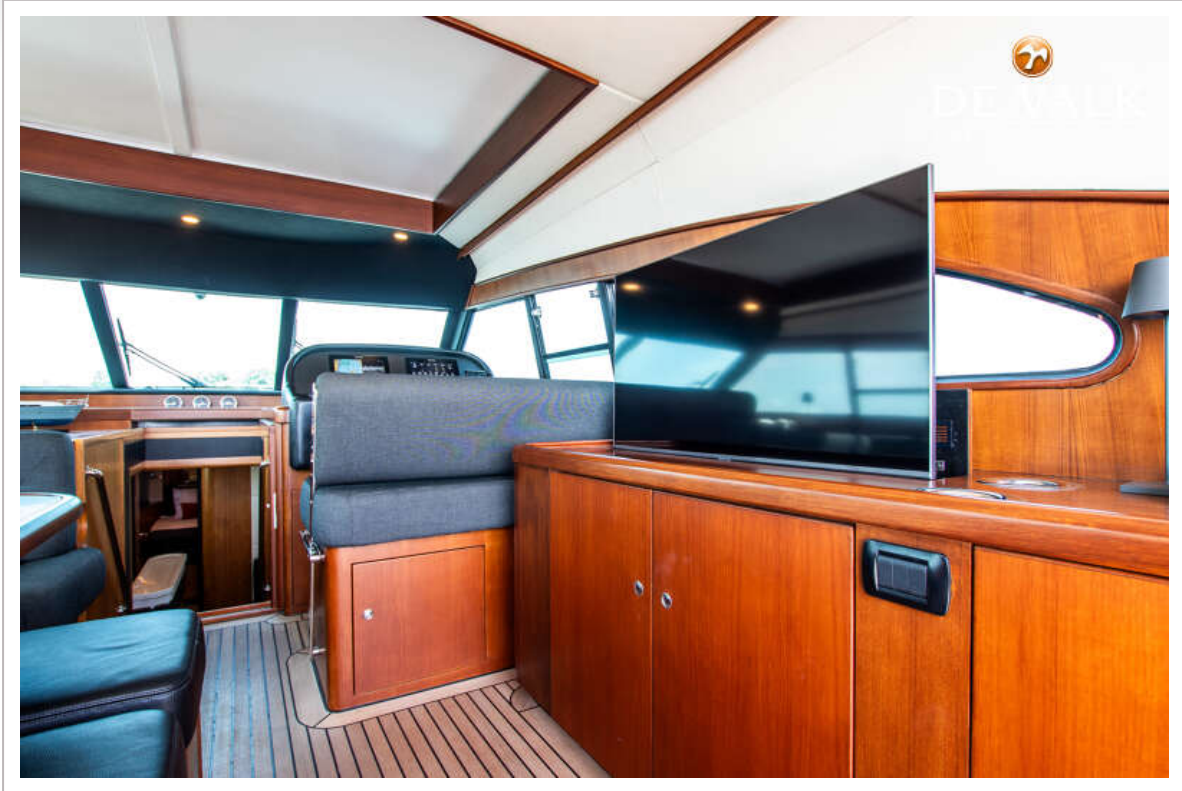
MULDER 59 CONVERTIBLE HARD TOP



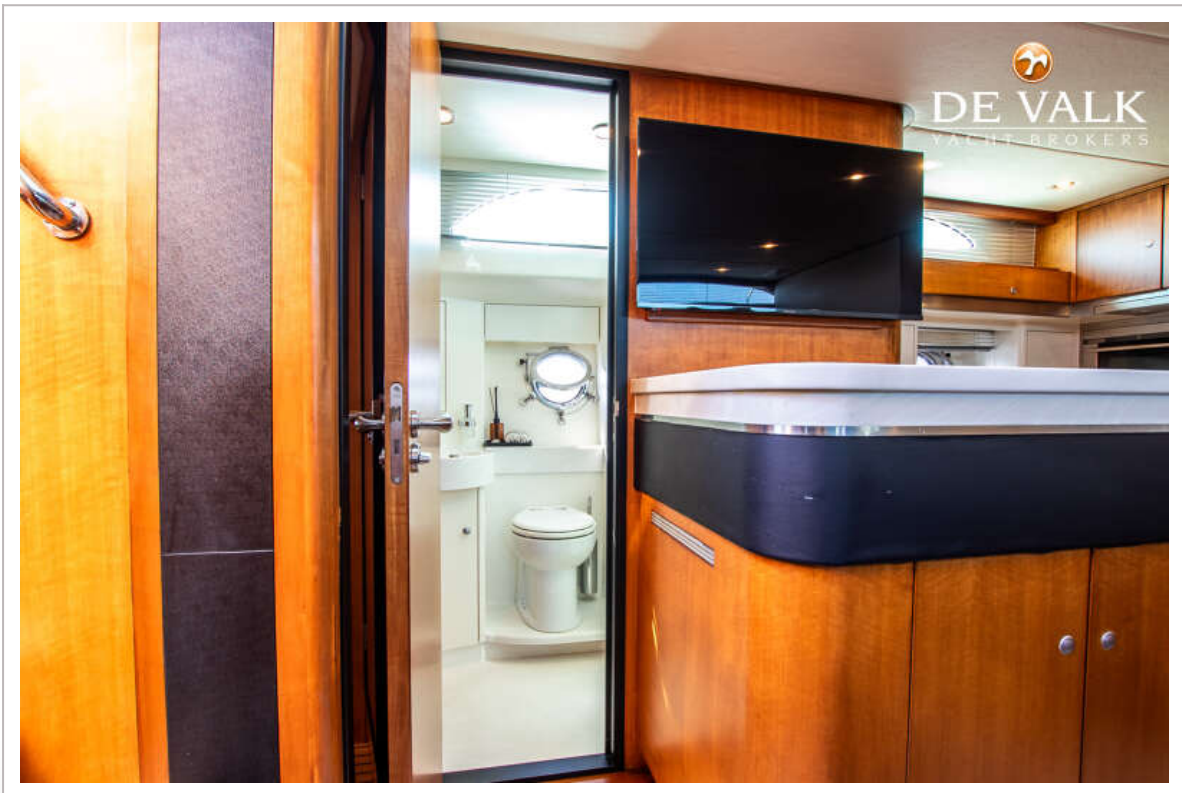
MULDER 59 CONVERTIBLE HARD TOP



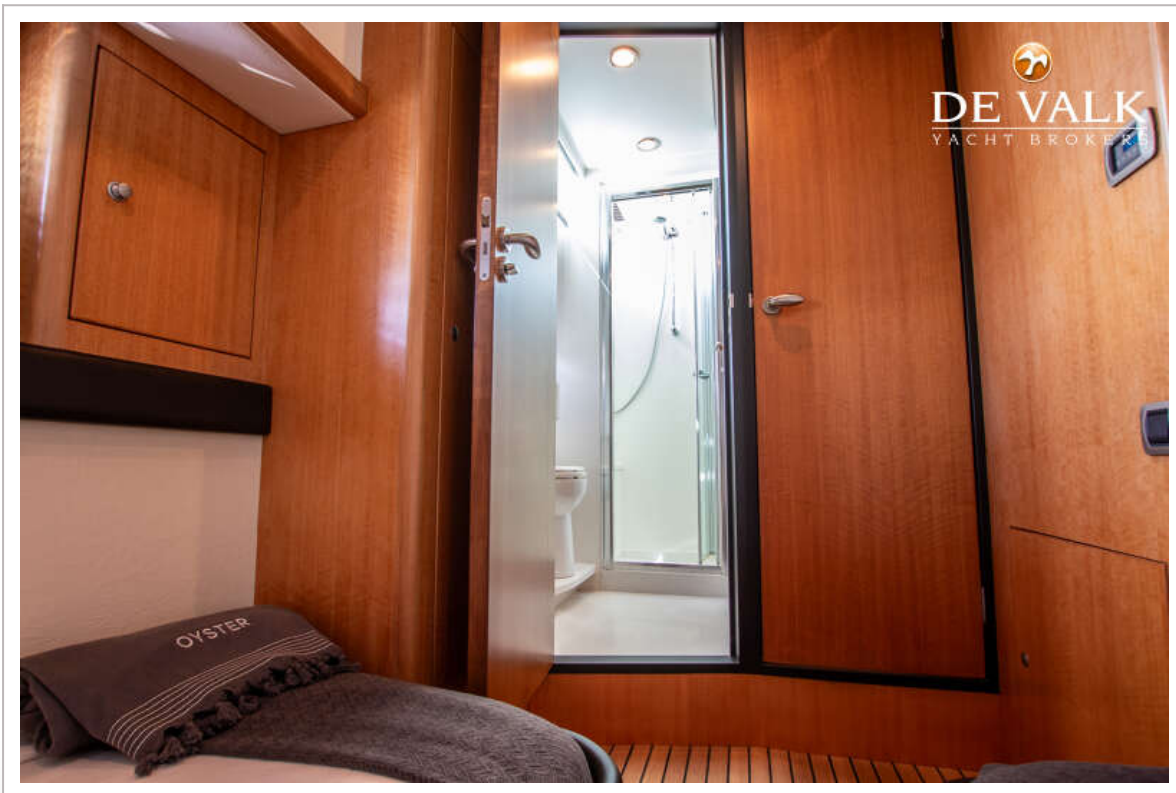
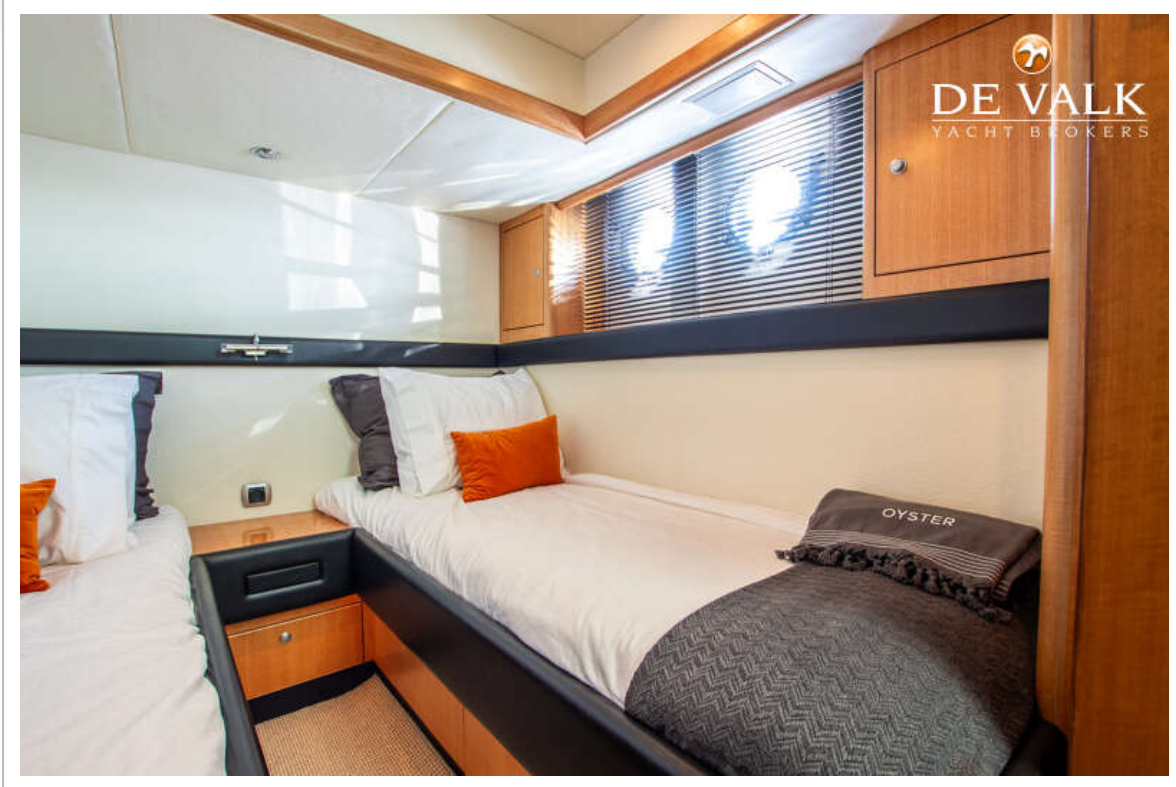
MULDER 59 CONVERTIBLE HARD TOP



MULDER 59 CONVERTIBLE HARD TOP



MULDER 59 CONVERTIBLE HARD TOP



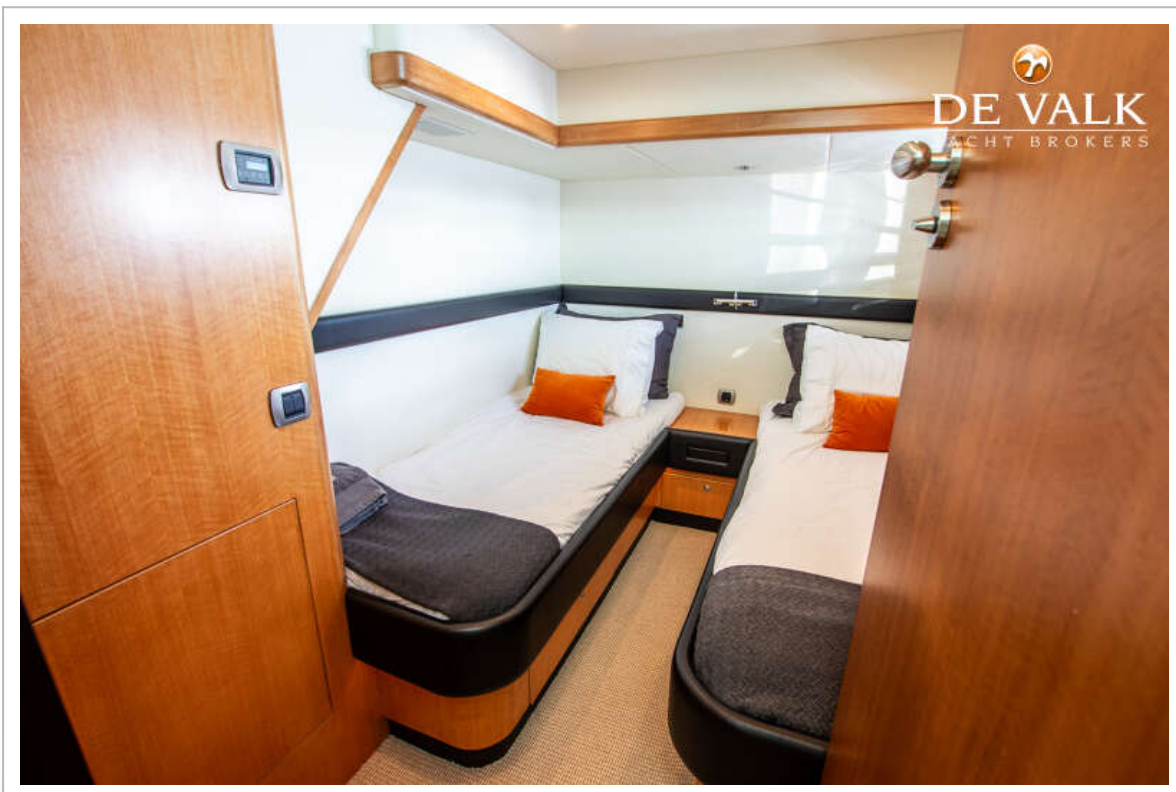
MULDER 59 CONVERTIBLE HARD TOP



MULDER 59 CONVERTIBLE HARD TOP



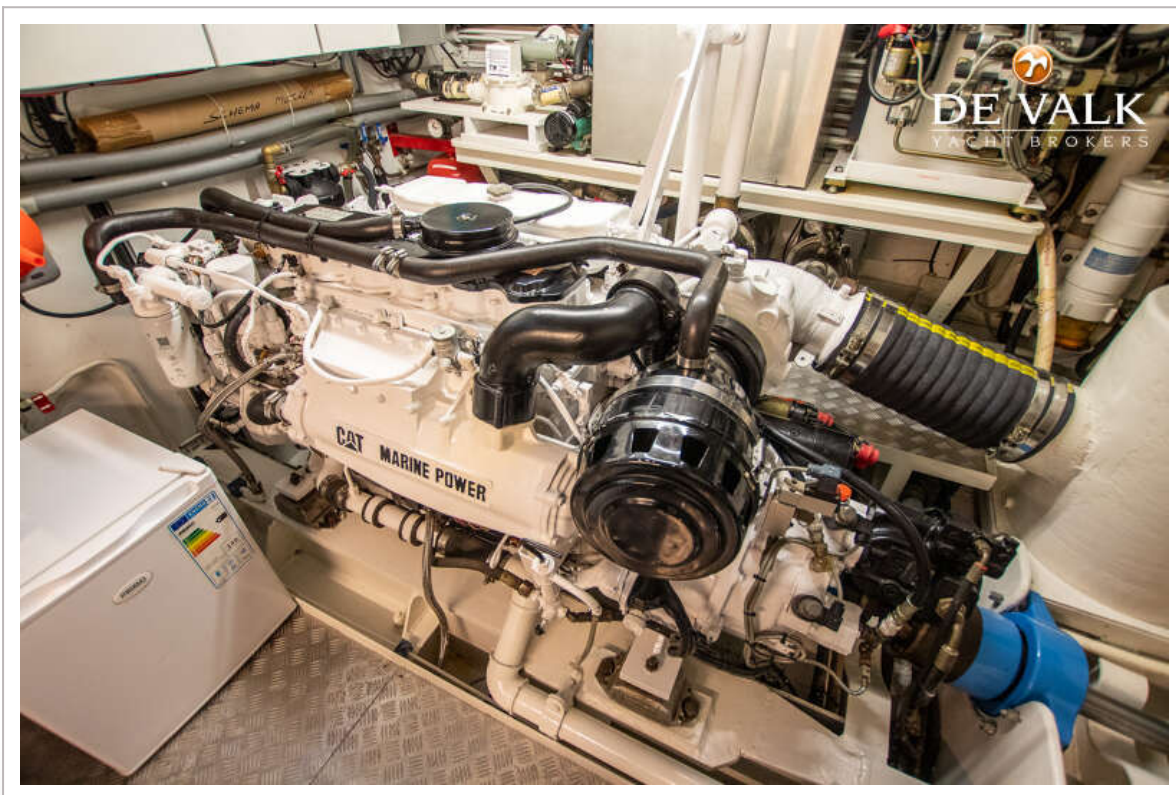
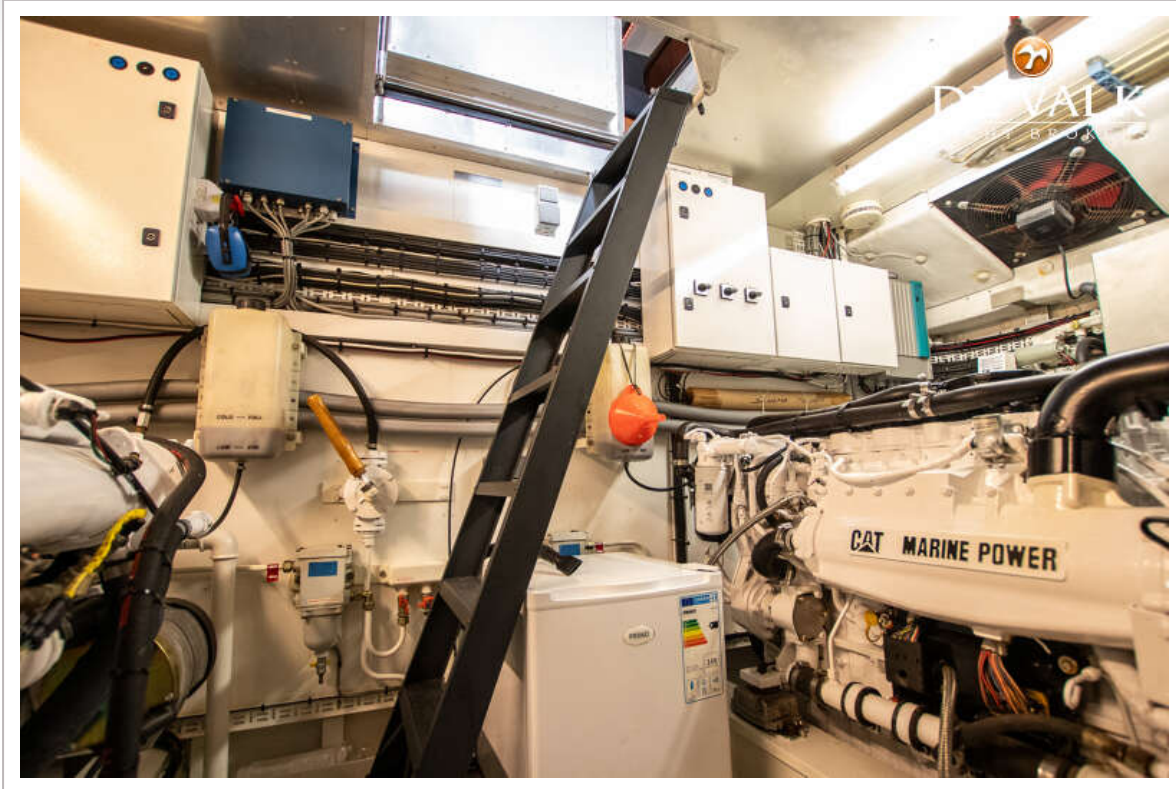
MULDER 59 CONVERTIBLE HARD TOP



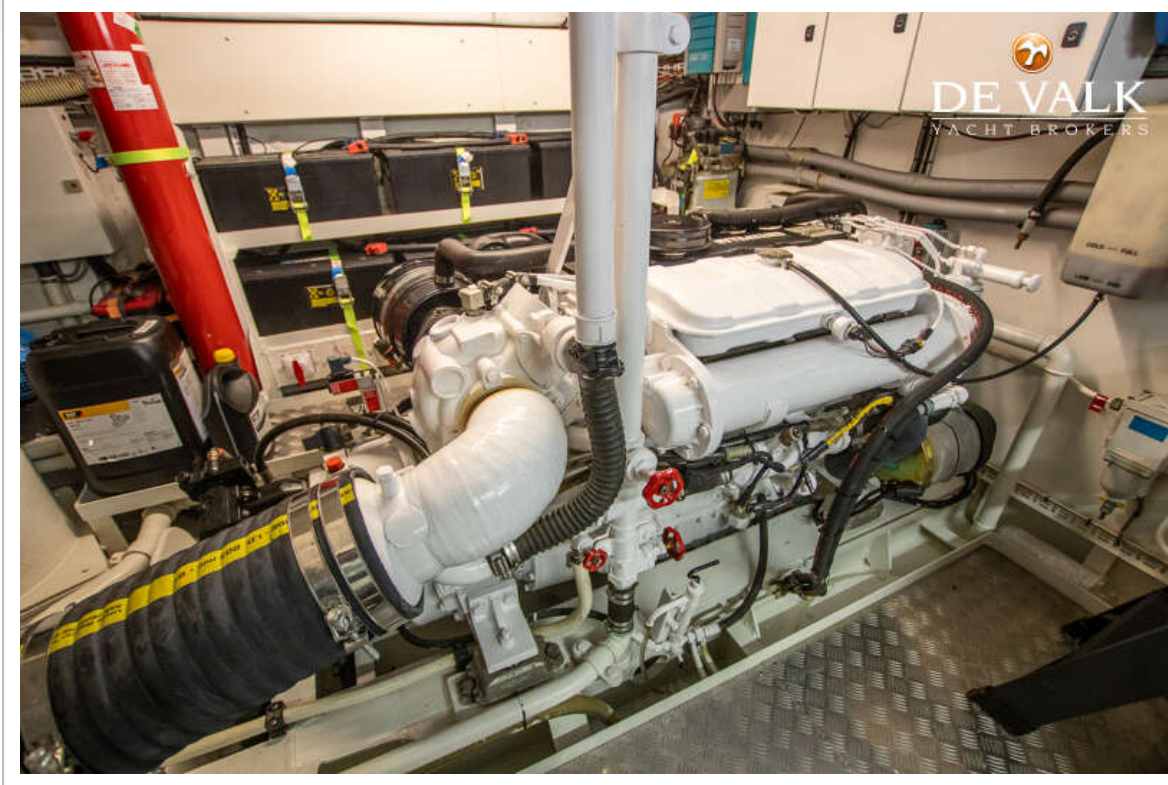
MULDER 59 CONVERTIBLE HARD TOP



MULDER 59 CONVERTIBLE HARD TOP



MULDER 59 CONVERTIBLE HARD TOP



MULDER 59 CONVERTIBLE HARD TOP

