



DE VALK
YACHT BROKERS



ISLAND PACKET 420



DE VALK
YACHT BROKERS

ISLAND PACKET 420

BROKER'S COMMENTS

The Island Packet 420 embodies a host of proven design and construction features that have evolved over years of boatbuilding experience and through feedback of thousands of owners. Representing a significant evolution from earlier models in this size range, the IP420 delivers the combination of seakeeping, safety, stability and speed, coupled with the comfort, liveability, and value that makes Island Packet America's favorite cruising yacht and has won her many rewards. "Lizzy" comes fully equipped with everything a demanding world cruising family would need. She can be seen in Finland.

Reinier van der Wolf

SPECIFICATIONS

Dimensions	13.60 x 4.30 x 1.50 (m)	Builder	Island Packet Yachts-USA
Built	2003	Cabins	2
Material	GRP	Berths	7
Engine(s)	1 x Yanmar 4JH3-TE diesel	Hp/Kw	75.00 (hp), 55.20 (kw)
Asking price	sold (VAT)	Lying	elsewhere / Not at sales office

CONTACT

Sales office	De Valk Monnickendam B.V.	Telephone	+31 (0)299 65 63 50
Address	Hoogedijk 6 1145 PM Katwoude NL	E-mail	monnickendam@devalk.nl

DISCLAIMER

These particulars are given in good faith as supplied but cannot be guaranteed.



ISLAND PACKET 420

GENERAL

Model	ISLAND PACKET 420
Type	sailing yacht
LOA (m)	13,60
LWL (m)	11,30
Beam (m)	4,30
Draft (m)	1,50
Air draft (m)	18,00
Headroom (m)	2,10
Year built	2003
Builder	Island Packet Yachts-USA
Country	U.S.A.
Designer	Bob Johnson N.A.
Displacement (t)	13,6
CE norm	A
Hull material	GRP
Hull colour	Creamy
Keel type	long keel
Superstructure material	GRP
Rubbing strake	stainless steel Strip
Deck material	GRP
Deck finish	Moulded in
Superstructure deck finish	Moulded in
Cockpit deck finish	Moulded in
Antifouling (year)	2022
Dorades	3
Window frame	stainless steel
Window material	polycarbonate
Deckhatch	8x
Portholes	stainless steel
Radar arch	non collapsible



Fuel tank (litre)	aluminium 600
Level indicator (fuel tank)	On the top on the tank
Freshwater tank (litre)	aluminium 1000
Level indicator (freshwater)	On the top on the tank
Blackwater tank (litre)	aluminium 200
Blackwater tank extraction	deck extraction + pump
Wheel steering	rack & pinion
Emergency tiller	yes

ACCOMMODATION

Cabins	2
Berths	7
Interior	teak
Floor	teak and holly
Saloon	yes
Headroom saloon (m)	2,1
Heating	calorgas ducted hot air Webasto
Chart table	yes
Aft Cabin	yes
Dinette to convert into berth	In the saloon
Galley	yes
Countertop	Teak and plastic
Sink	stainless steel Double
Cooker	calor gas
Fridge	With freezer compartment
Hot water system	220V + engine
Water pressure system	electrical
Owners cabin	double bed
Bed length (m)	Ca. 2 m
Wardrobe	hanging/drawers/shelves
Bathroom	en suite



Toilet	en suite
Toilet system	manual
Wash basin	at the toilet
Shower	en suite
Guest cabin 1	double bed
Bed length (m)	Ca. 2 m
Wardrobe	hanging/drawers/shelves
Bathroom	en suite
Toilet	en suite
Toilet system	manual
Wash basin	in the bathroom
Shower	en suite
Extra info	sanitary hoses renew (2022)

MACHINERY

No of engines	1
Make	Yanmar
Type	4JH3-TE
HP	75
kW	55.20
Fuel	diesel
Year installed	2003
Maximum speed (kn)	8
Cruising speed (kn)	6
Engine hours	3540
Engine cooling system	freshwater heat exchanger
Drive	shaft
Shaft seal	New
Engine controls	bowden cable New engine control mechanism + control cables
Gearbox	mechanical
Bowthruster	electric



Exhaust	watercooled
Propeller type	fixed
Propeller blades	3
Propeller shaft material	stainless steel
Shaft lubrication	water
Manual bilge pump	yes
Electric bilge pump	yes
Batteries	4
Start battery	1
Battery monitor	yes
Battery charger	yes
Inverter	12 V to 220 V
Wind generator	400 W
Solar panel	400 W
Shorepower	with cable
Extra info	new cutless bearing, new engine mounts, new exhaust rising elbow and hose,

NAVIGATION

Compass	yes
Depth sounder	yes
Log	yes
Windset	yes
VHF	yes
VHF handheld	yes
Autopilot	yes
Rudder angle indicator	yes
Radar	yes
GPS	yes
Plotter	yes
Navtex	yes



AIS receiver	Receiving - transmitting
EPIRB	(2022)
Navigation lights	yes
Searchlight	yes

EQUIPMENT

Sprayhood with grab rail	yes
Bimini	yes
Cockpit cushions	yes
Cockpit table	yes
Bathing platform	yes
Boarding ladder	stainless steel
Anchor	Plough type, custom Island Packet, stainless steel
Anchor chain	Stainless steel 50 m
Deck wash	On the bow
Dinghy	inflatable 3,20m (2022)
Outboard	Yamaha 6 HP, (2022)
Davits	Dinghy hanging on the targa arch
Sea railing	wire On stainless steel
Grab rail (superstructure)	stainless steel
Railing side opening gates	Opening gates on both sides
Pushpit	yes
Pulpit	yes
Life raft	container (2022)
Life raft (pers)	6
Lifejackets	yes
Danbuoy	yes
Safety lines on deck	yes
Radar reflector	On the mast
Fenders	yes
Mooring lines	yes



Spare parts	yes
Tools	yes
TV	yes
Cockpit speakers	yes
Fire extinguisher	yes

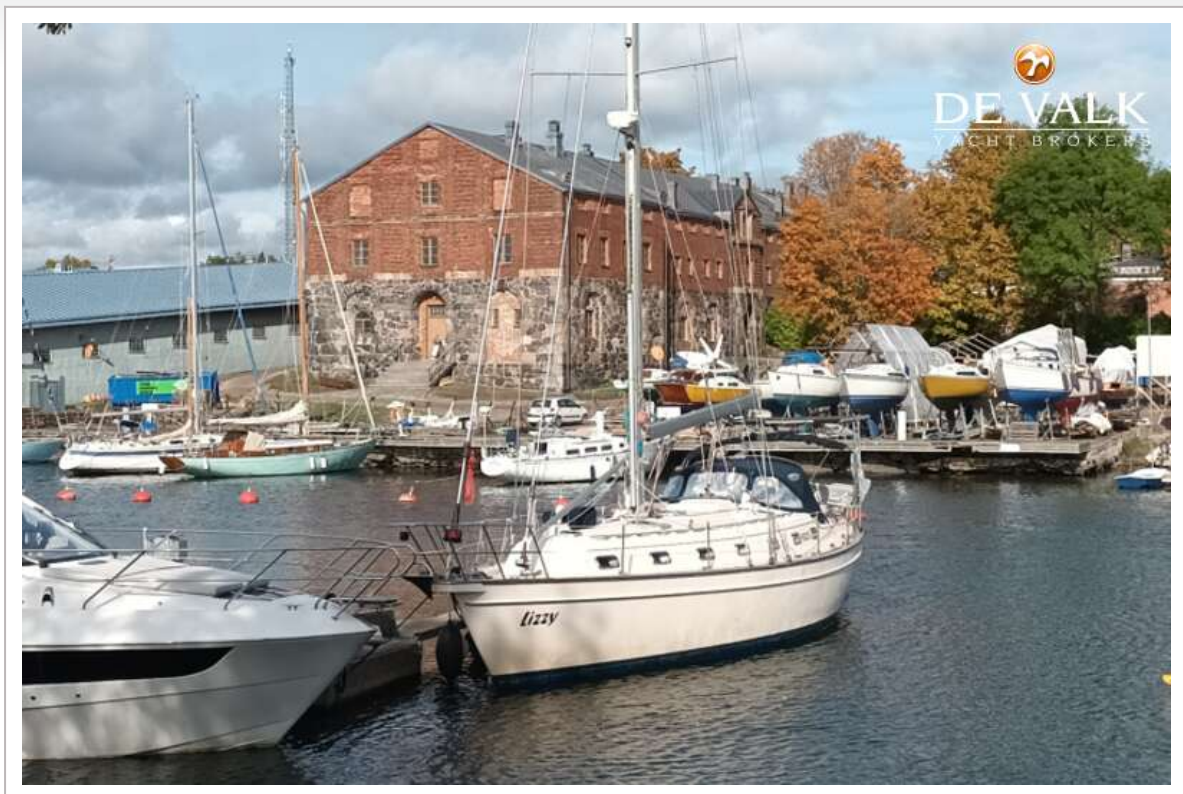
RIGGING

Rigging	sloop-cutter
Standing rigging	wire
Brand mast	Sparcraft
Material mast	aluminium
Spreaders	Double
Mainsail	In-mast furling, (2022)
Jib	Furling, (2022)
Genoa	Furling, (2022)
Genoa furler	yes
Self tacking jib installation	yes
Reefing System	main in-mast furling
Backstay adjuster	tackle
Boomvang	tackle
Primary sheet winch	yes
Winchcovers	yes



ISLAND PACKET 420





ISLAND PACKET 420



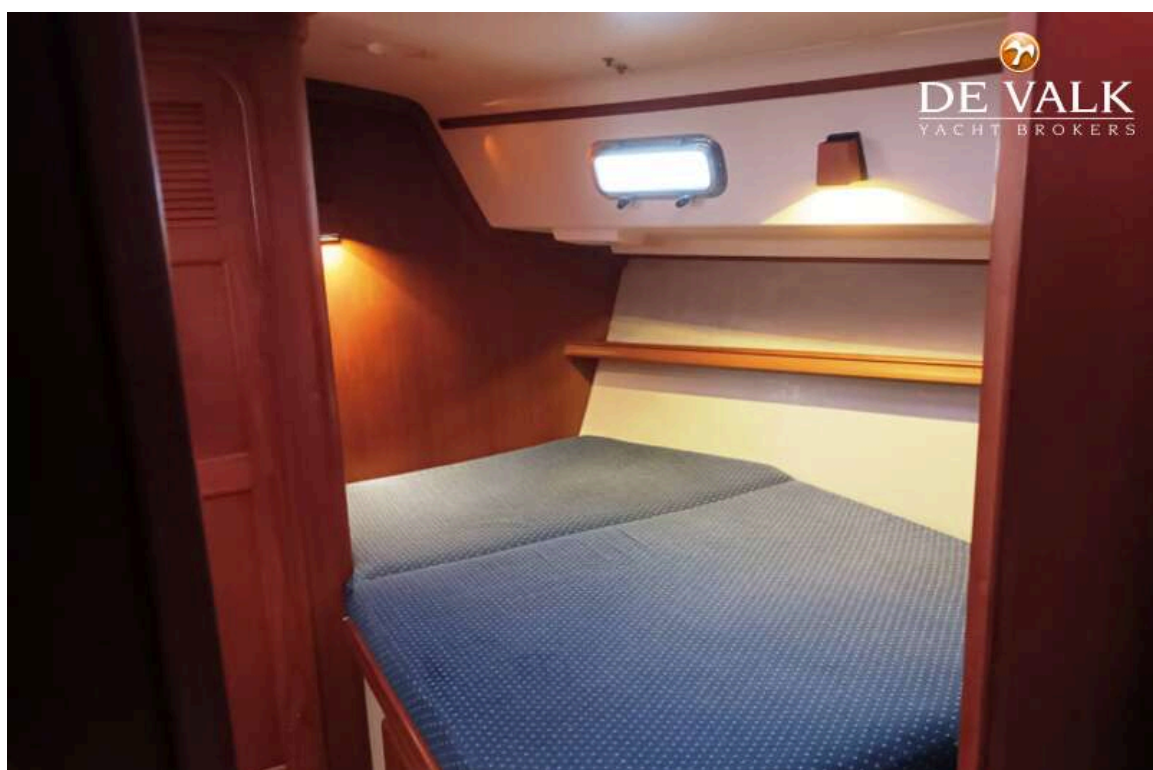
ISLAND PACKET 420



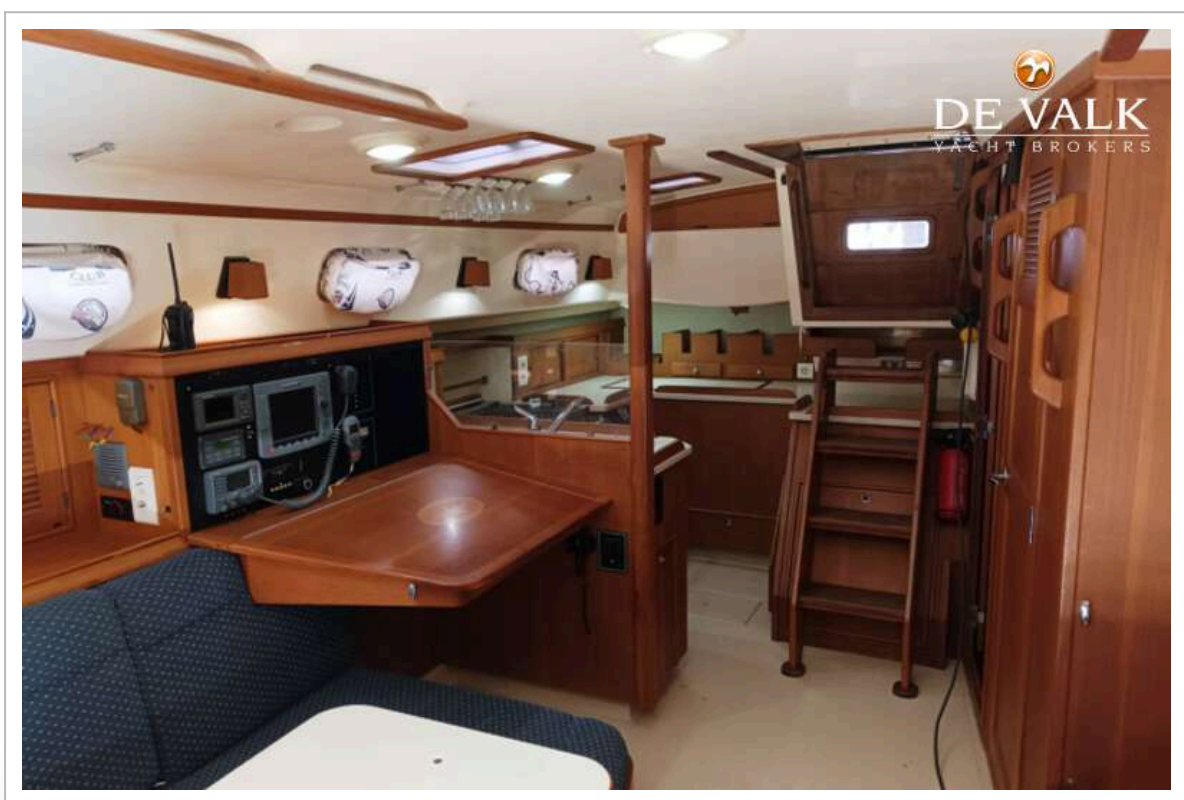
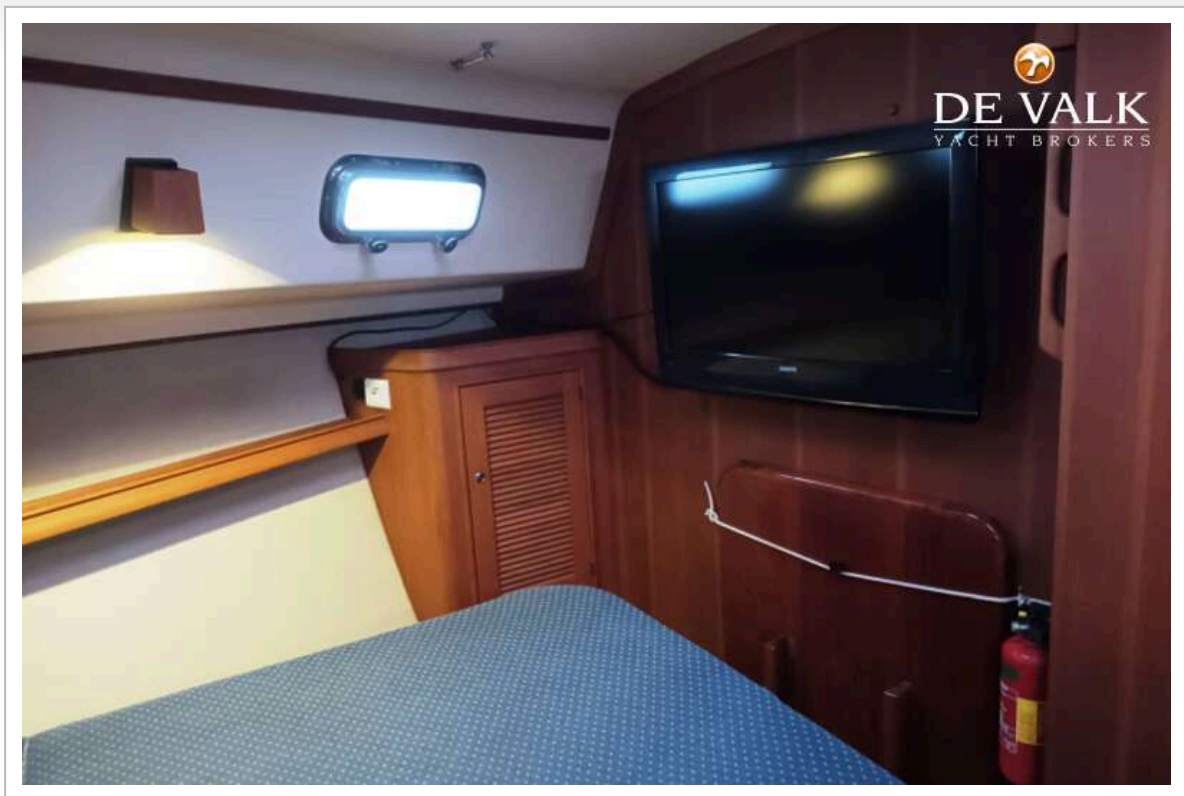
ISLAND PACKET 420



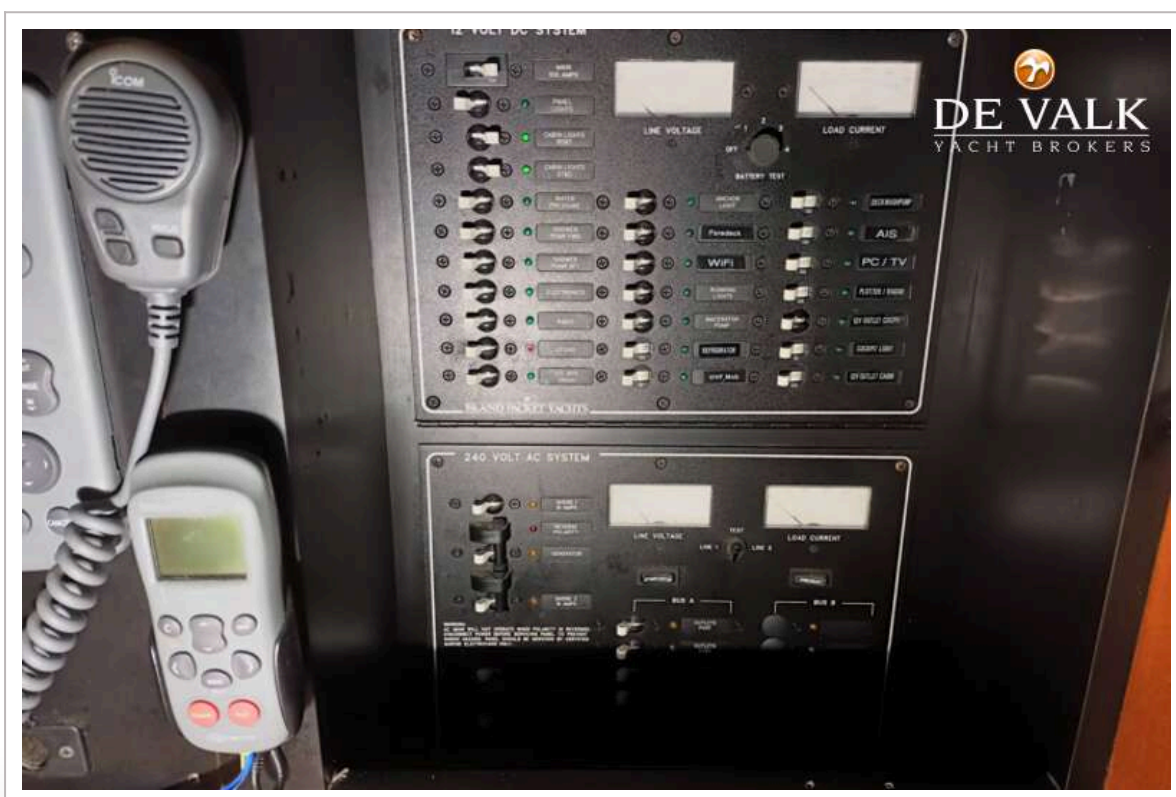
ISLAND PACKET 420



ISLAND PACKET 420



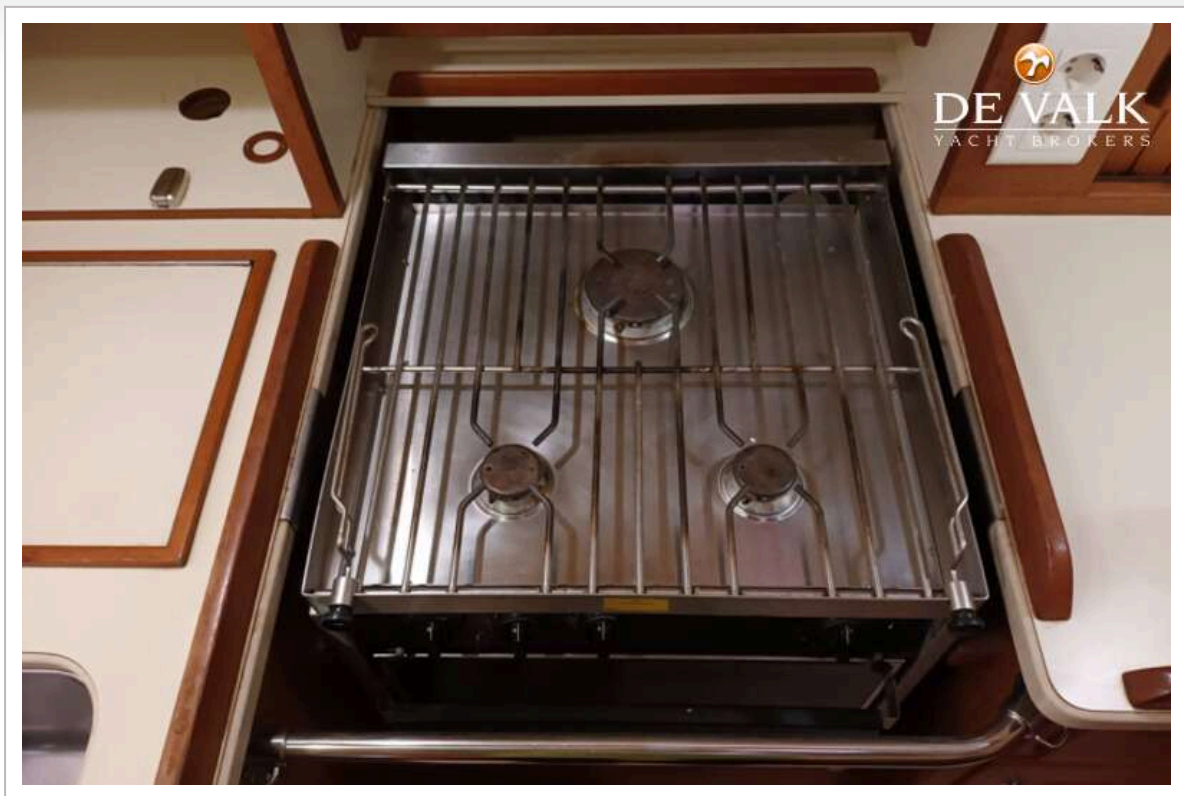
ISLAND PACKET 420



ISLAND PACKET 420



ISLAND PACKET 420



ISLAND PACKET 420



ISLAND PACKET 420

