



DE VALK
YACHT BROKERS



LAURENT GILES 16,45



DE VALK
YACHT BROKERS

LAURENT GILES 16,45

BROKER'S COMMENTS

The yacht is characterised by a sleek and stylish design, perfectly blending Laurent Giles' classic lines with Benetti's Italian sophistication. The interior space is thoughtfully designed with attention to detail. The luxurious cabins and common areas offer comfort and a relaxed atmosphere. The Benetti Laurent Giles 16.45 represents the perfect fusion of Italian craftsmanship and British design. Whether you enjoy relaxing cruises or are passionate about sailing, this yacht embodies the essence of luxury and performance on the water.

Johan Schootstra

SPECIFICATIONS

Dimensions	17.40 x 4.75 x 2.35 (m)	Builder	Benetti Sail Division
Built	1982	Cabins	3
Material	Steel	Berths	7
Engine(s)	1 x Volvo TMC 70 C diesel	Hp/Kw	175.00 (hp), 128.80 (kw)
Asking price	€ 239.000 (VAT Paid)	Lying	elsewhere / Not at sales office

CONTACT

Sales office	De Valk Hindeloopen B.V.	Telephone	+31 514 52 40 00
Address	Oosterstrand 1 8713 JS Hindeloopen NL	E-mail	hindeloopen@devalk.nl

DISCLAIMER

These particulars are given in good faith as supplied but cannot be guaranteed.



GENERAL

Model	LAURENT GILES 16,45
Type	sailing yacht
LOA (m)	17,40
LWL (m)	15,50
Beam (m)	4,75
Draft (m)	2,35
Air draft min (m)	17,50
Headroom (m)	2,05
Year built	1982
Launched	1983
Builder	Benetti Sail Division
Country	Italy
Designer	Laurent Giles
Displacement (t)	36,88
Ballast (tonnes)	lead in steel
Hull material	steel
Hull colour	Awlgrip Pearl Grey + blue band
Hull thickness (mm)	5 mm
Hull shape	round-bilged
Keel type	bilge keels
Superstructure material	aluminium
Superstructure (mm)	5 mm
Rubbing strake	Teak
Deck material	steel
Deck finish	teak
Superstructure deck finish	teak
Cockpit deck finish	teak
Antifouling (year)	2023
Window frame	aluminium
Window material	tempered glass



Portholes	aluminium
Insulation	foam & Rockwool
Radar arch	non collapsible
Mast can be lowered	manual
Fuel tank (litre)	steel 1000 ltr. in two tanks
Level indicator (fuel tank)	yes
Freshwater tank (litre)	steel 2000 ltr. in three tanks
Level indicator (freshwater)	yes
Blackwater tank (litre)	steel 60 ltr.
Blackwater tank extraction	pump
Wheel steering	hydraulic
Inside helm position	yes
Outside helm position	hydraulic
Emergency tiller	yes
More info on hull	Sanded + Primerized + 6 layers Epoxy + 2 layers Chlorinated rubber antifouling.
More info on paintwork	Full job AwlGrip 2018
Extra info	Mast painted AwlGrip 2022 and overhauled

ACCOMMODATION

Cabins	3
Berths	7
Crew cabin	yes
Crew berths	1
Interior	mahogany
Floor	teak and holly And carpet
Pilot house/deck saloon	yes
Sliding roof	manual
Heating	electric 220V 10 blowing exits new 2023
Air-conditioning	reverse cycle airco
Chart table	yes



Dining room	yes
Dinette	yes
Opening door to cockpit	yes
Galley	yes
Countertop	stainless steel
Sink	stainless steel
Cooker	calor gas 4 burner
Oven	yes
Extractor	yes
Gas alarm	yes
Microwave	yes
Fridge	yes
Freezer	yes
Hot water system	220V + engine 60 ltr.
Water pressure system	electrical
Dishwasher	yes
Kettle	yes
Owners cabin	double bed
Bed length (m)	1,95 mtr.
Wardrobe	hanging/drawers/shelves
Bathroom	en suite
Toilet	yes
Toilet system	electric new 2022
Wash basin	yes
Shower	yes
Guest cabin 1	bunk bed
Bed length (m)	1,90 mtr.
Wardrobe	hanging/drawers/shelves
Bathroom	en suite
Toilet	yes
Toilet system	yes
Wash basin	yes



Shower	yes
Guest cabin 2	bunk bed
Bed length (m)	1,90 mtr.
Wardrobe	hanging/drawers/shelves
Bathroom	en suite
Toilet	New 2021
Toilet system	electric
Wash basin	yes
Shower	yes
Crew cabin(s)	1
Bathroom (crew)	yes
Toilet (crew)	yes
Toilet system	manual
Wash basin	yes
Shower (crew)	yes
Washing machine/dryer combi	yes

MACHINERY

No of engines	1
Make	Volvo
Type	TMC 70 C
HP	175
kW	128.80
Fuel	diesel
Maximum speed (kn)	9,5
Cruising speed (kn)	8,5
Consumption (l/hr)	10
Engine hours	6000
Engine cooling system	freshwater heat exchanger
Drive	shaft
Shaft seal	yes



Engine controls	bowden cable
Gearbox	hydraulic
Bowthruster	hydraulic
Exhaust	watercooled
Thrust bearing	yes
Propeller type	fixed
Propeller shaft material	stainless steel
Shaft lubrication	Water cooled + Grease
Manual bilge pump	yes
Electric bilge pump	3x + 1x 220V
Bilge alarm	yes
Generator	wet exhaust Kohler 20 kW
Start battery	2x 24V
Service battery	4x 24V
Generator battery	1x
Battery monitor	yes
Battery charger	one for service one for Starter one for Gen one for Emergency
Inverter	yes
Shorepower	With 40 mtr cable + 50 mtr. spare
Insulation transformer	yes
Extra info	Installing now new machinery for fuel cleaning/filtering to avoid water or pollution + double Racor for engine and generator

NAVIGATION

Compass	yes
Multi control display	B&G
Windset	B&G
Repeater	B&G
VHF	Sailor
VHF handheld	yes
Autopilot	yes



Rudder angle indicator	yes
Radar	Furuno 16 nm
GPS	yes
Plotter/GPS	Geonav
Weather receiver	Furuno
Navtex	yes
Personal computer	yes
PC connection	yes
AIS transceiver	yes
Navigation lights	yes
Searchlight	yes
Loudhailer	yes

EQUIPMENT

Sprayhood with grab rail	yes
Cockpit cover	yes
Dodger	yes
Bimini	yes
Sun awning	yes
Winter cover	yes
Window cover	yes
Cockpit cushions	yes
Cockpit table	yes
Cockpit chairs	yes
Bathing platform	yes
Boarding ladder	yes
Gangway	yes
Deck shower	yes
Anchor	CQR Plough And Bruce
Anchor chain	50 mtr. 12mm
Anchor 2	Rocna



Anchor chain	100 mtr.
Windlass	electrical
Windlass aft	electrical
Deck wash	yes
Dinghy	rigid inflatable
Outboard	Mercury
Outboard support	yes
Davits	stainless steel
Davits controls	manual
Sea railing	wire
Grab rail (superstructure)	stainless steel
Railing side opening gates	yes
Pushpit	yes
Pulpit	yes
Lifebuoy	yes
Danbuoy	yes
Safety lines on deck	Available
Rope cutter	yes
Clearview window	yes
Horn	electric
Binocular	yes
Radar reflector	yes
Fenders	yes
Mooring lines	yes
Spare parts	yes
Tools	yes
Alarm system	yes
TV	yes
TV receiver	yes
Radio-cd player	yes
Surround Sound System	yes
Cockpit speakers	yes



Speakers in salon	yes
Speakers in cabin	At Bow
Clock - barometer	yes
Fire extinguisher	yes
Extinguisher in engine room	yes

RIGGING

Rigging	ketch-cutter
Standing rigging	wire new 2018
Material mast	aluminium
Spreaders	2 pair
Mainsail	New 2020
Mainsail cover	New 2020
Furling boom	New 2020
Main staysail	New 2020
Fisherman staysail	New 2020
Mizzen	New 2020
Mizzen sailcover	New 2020
Genoa	New 2020
Genoa furler	Electric
Cutter furler	yes
Gennaker	yes
Staysail furler	yes
Reefing System	main in-boom furling
Backstay adjuster	mechanical
Boomvang	mechanical
Primary sheet winch	yes
Genoa sheetwinches	yes
Halyard winches	yes
Spinnaker winch	yes
Multifunctional winches	yes



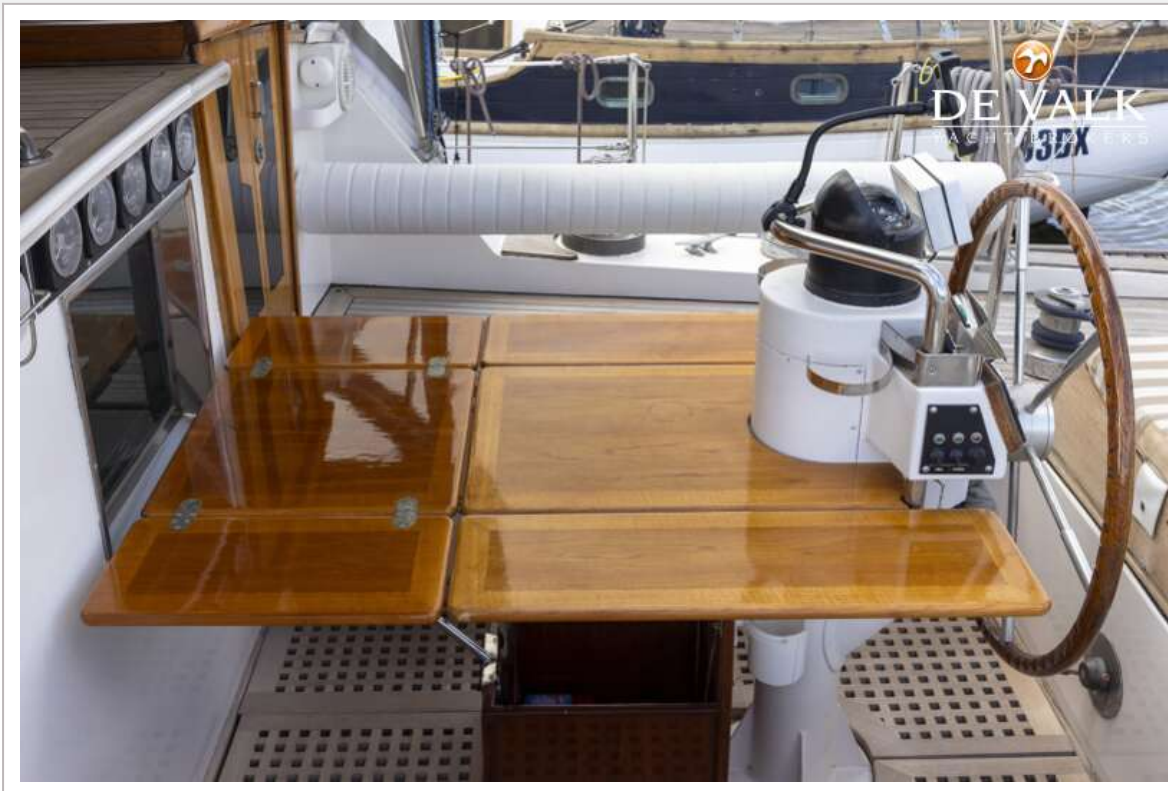
Winchcovers

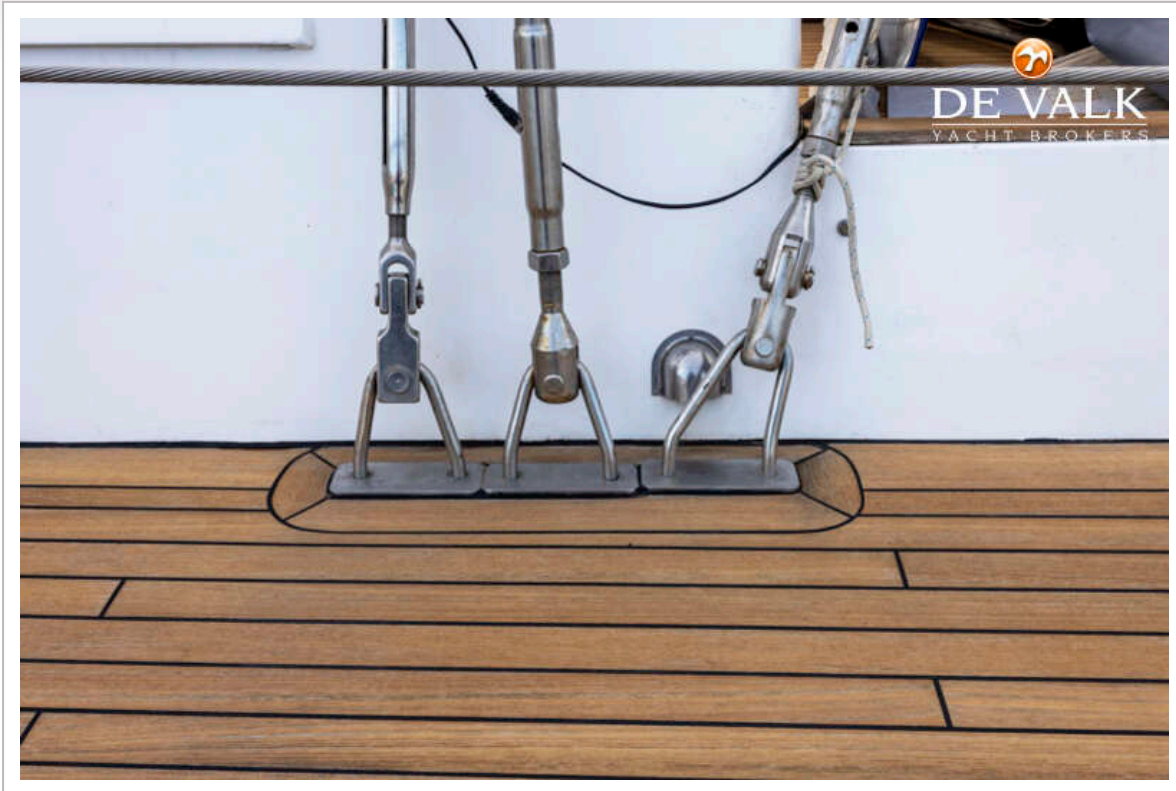
yes



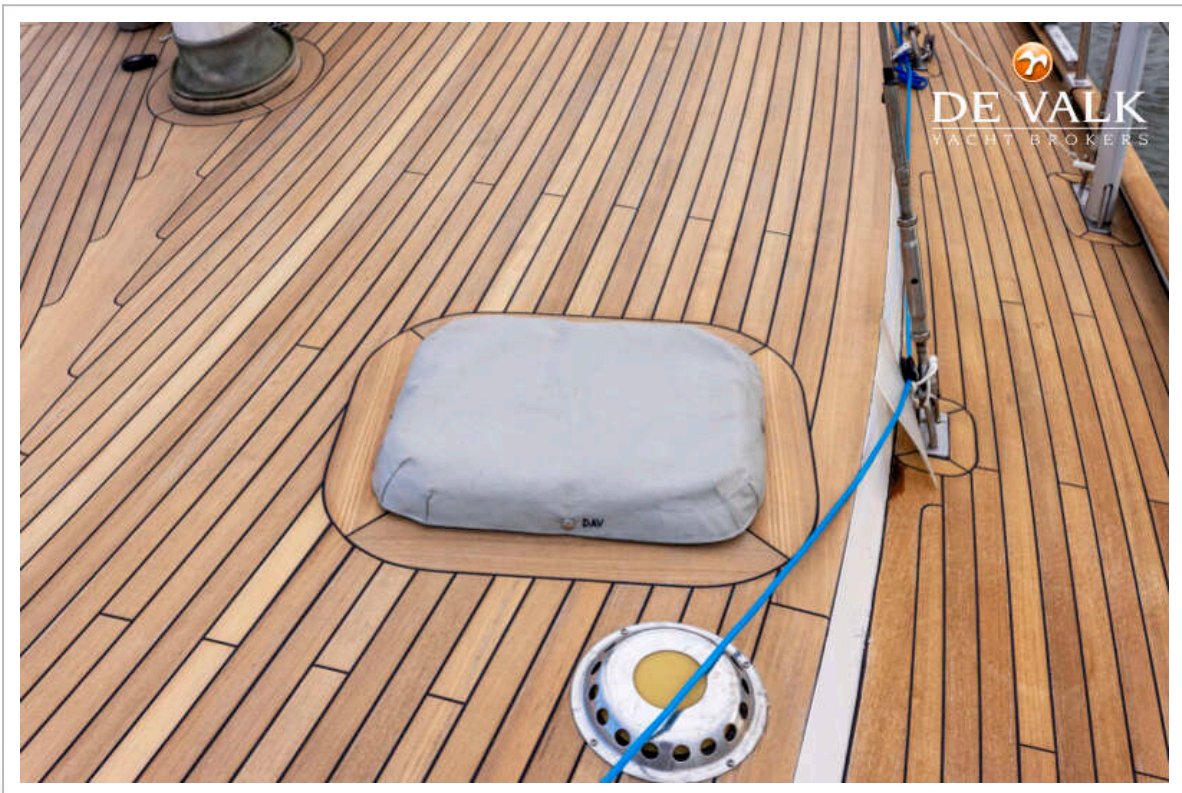


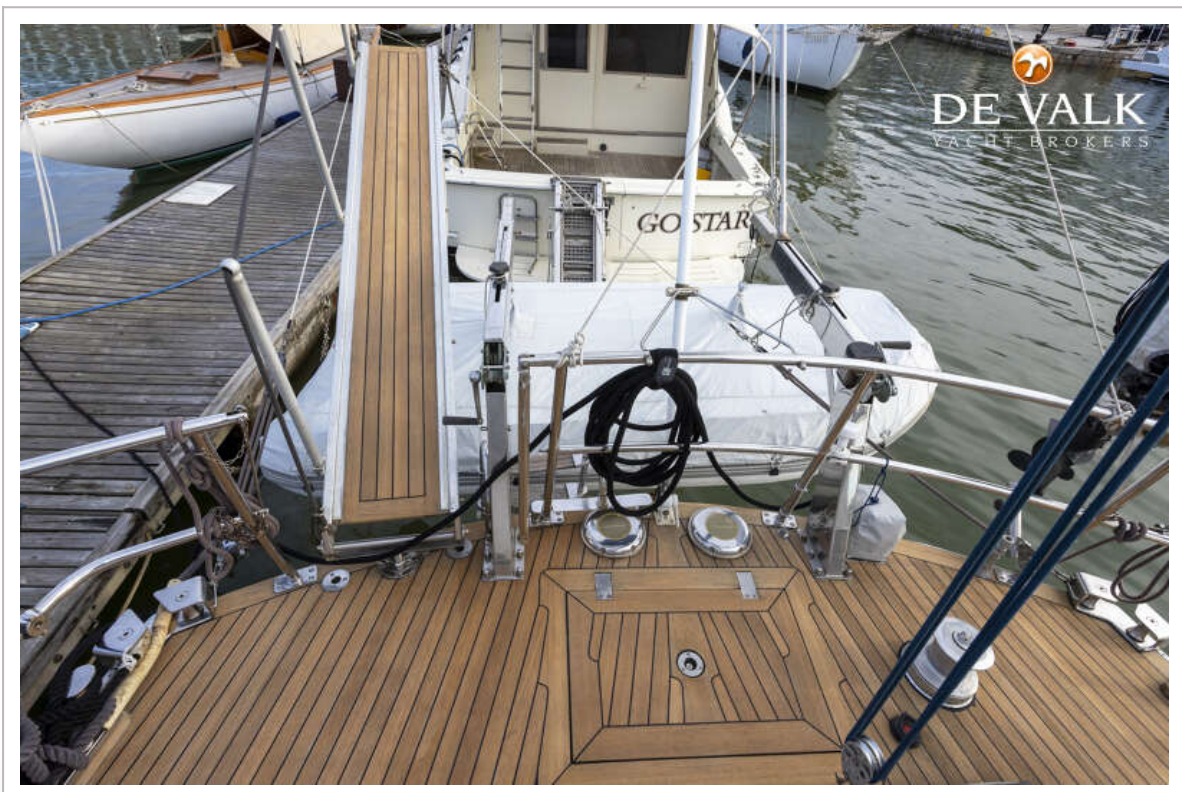
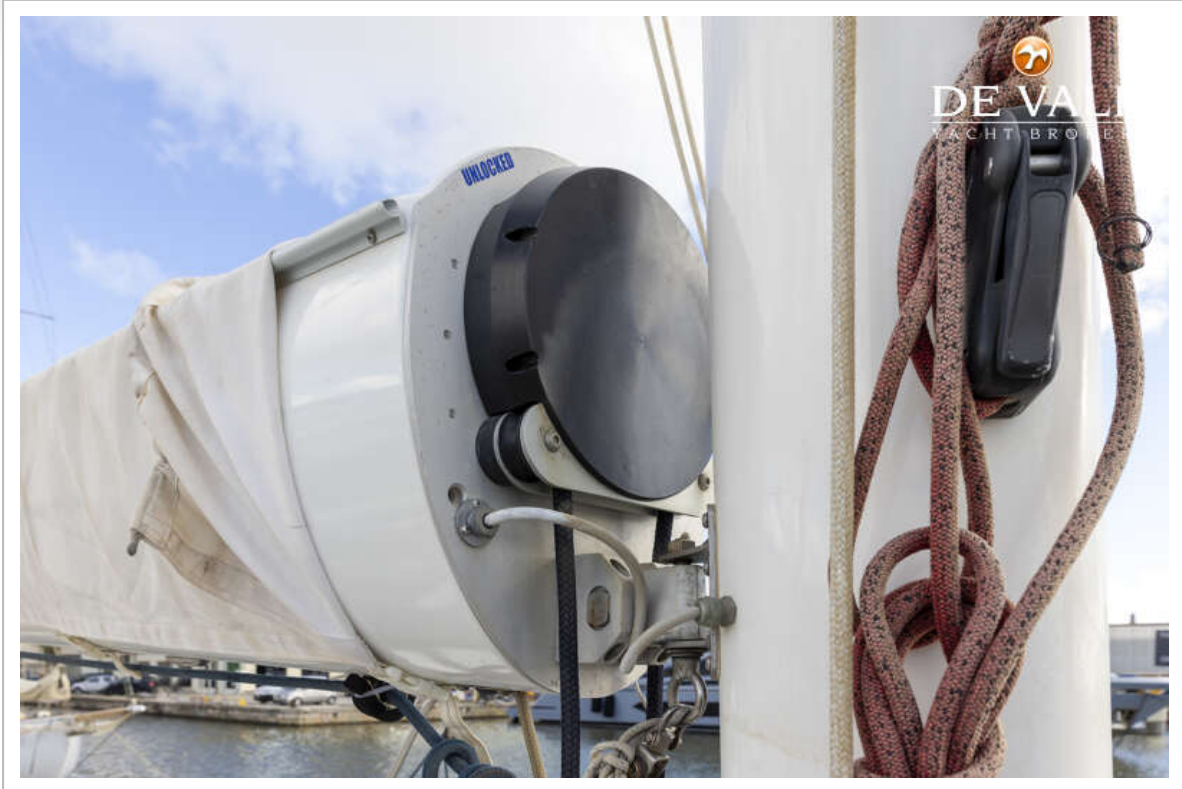






LAURENT GILES 16,45

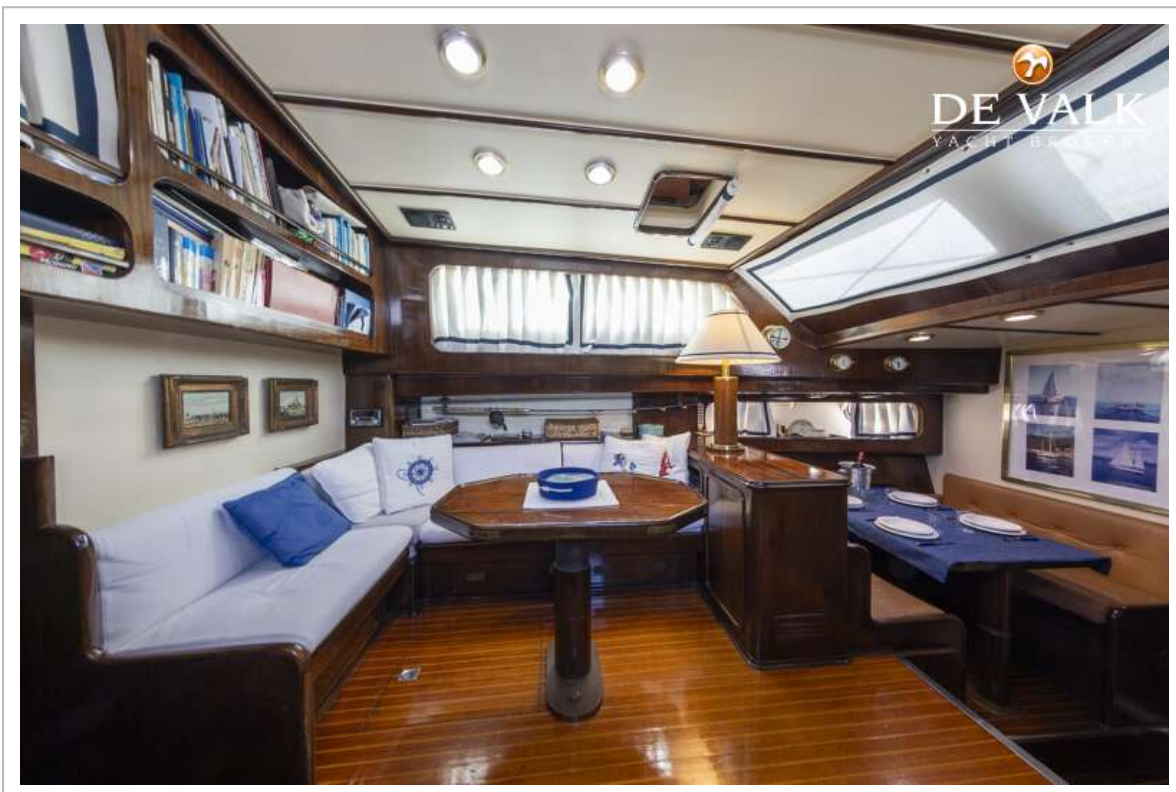
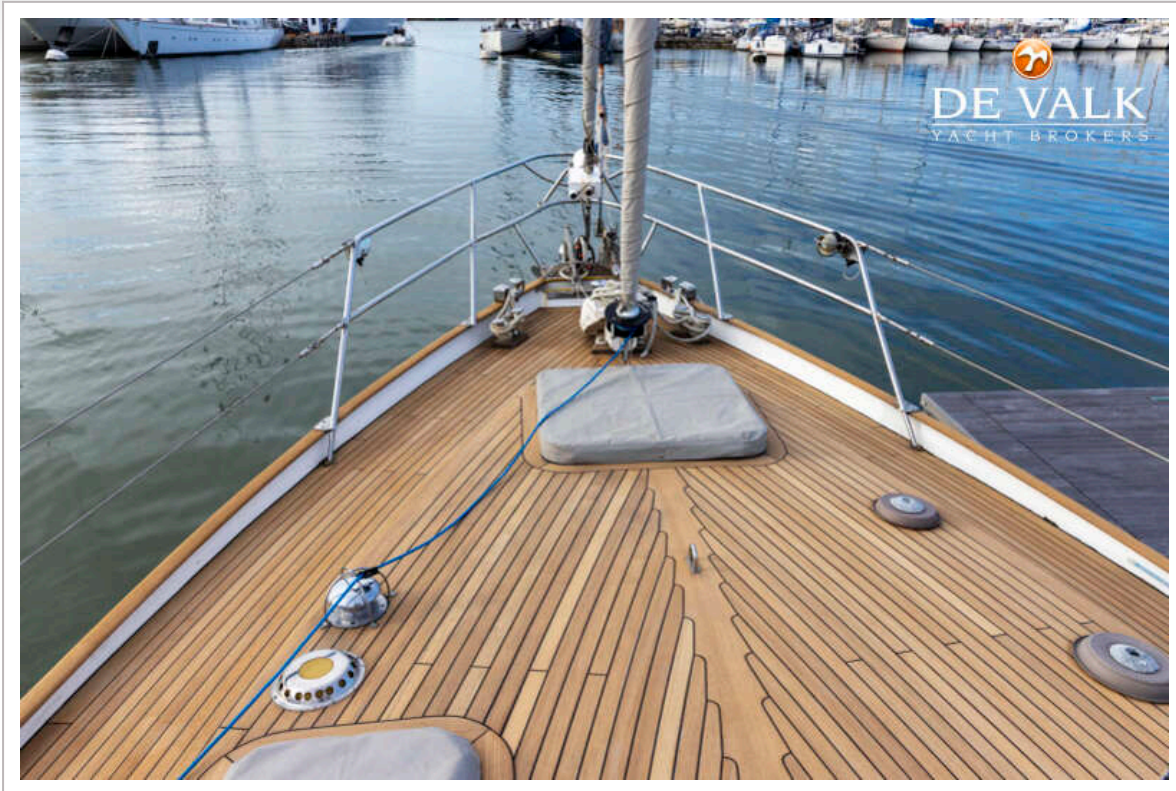


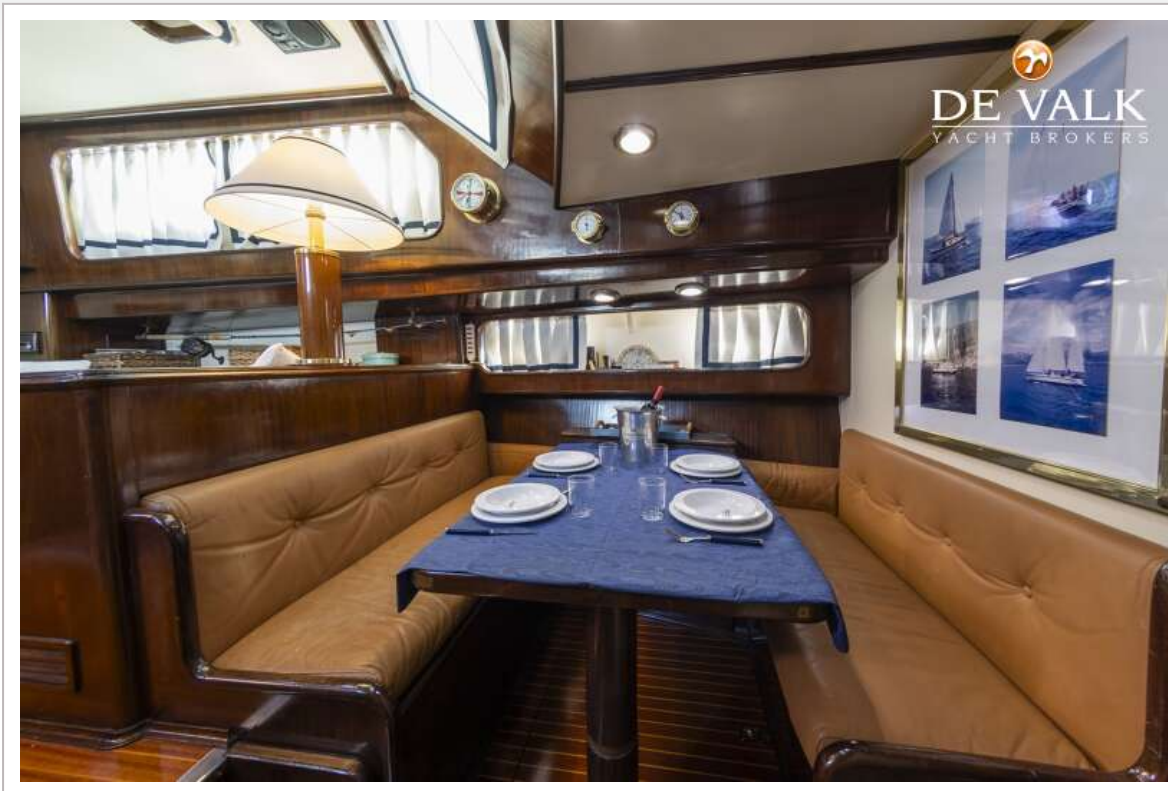




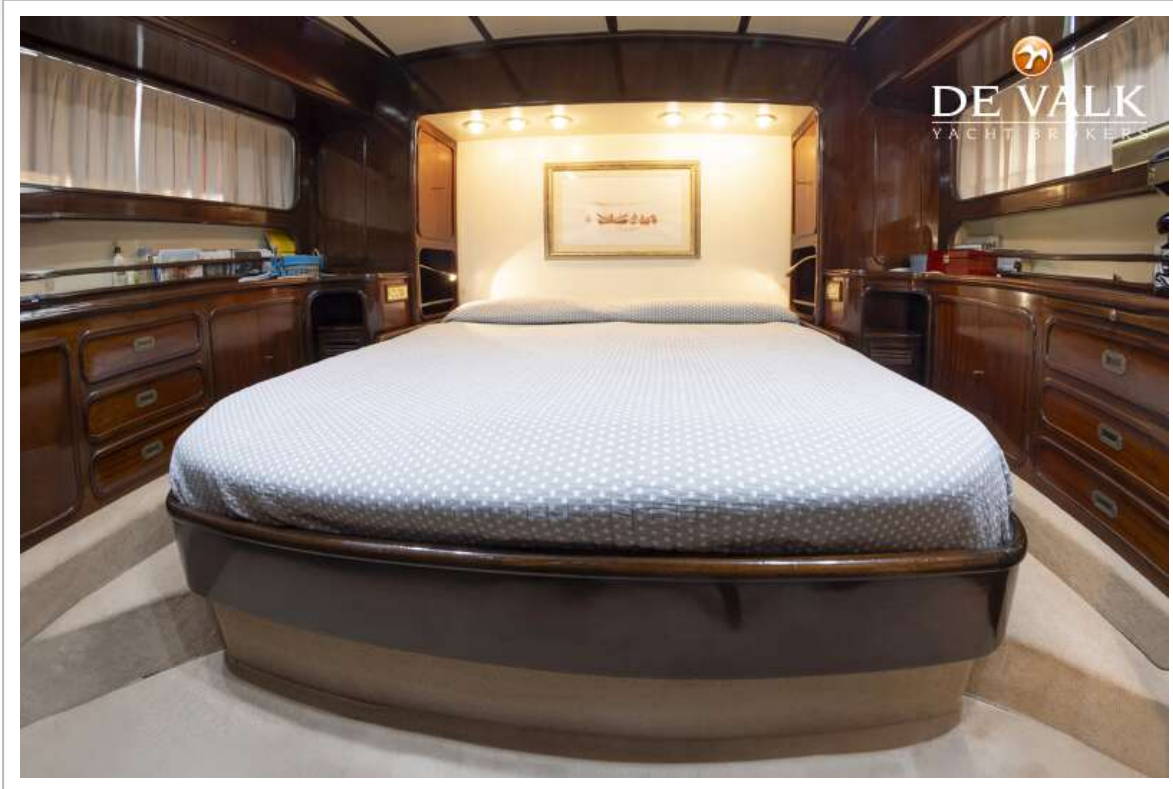


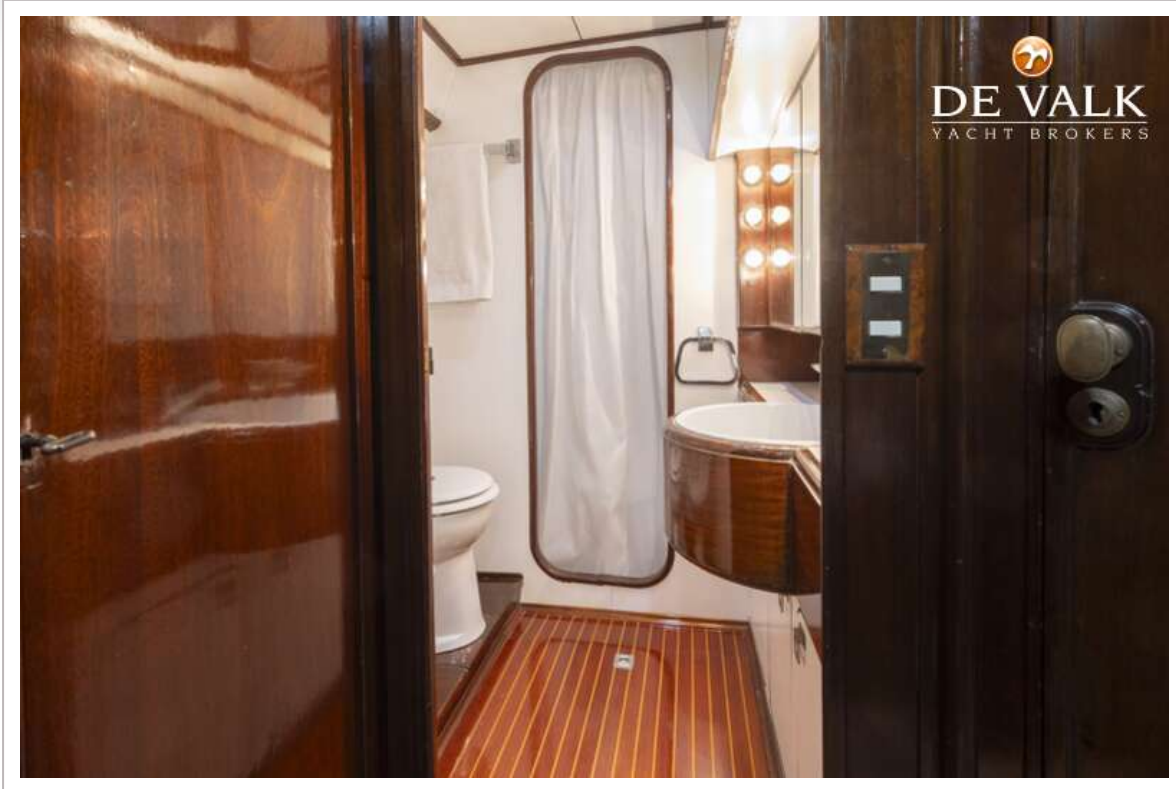


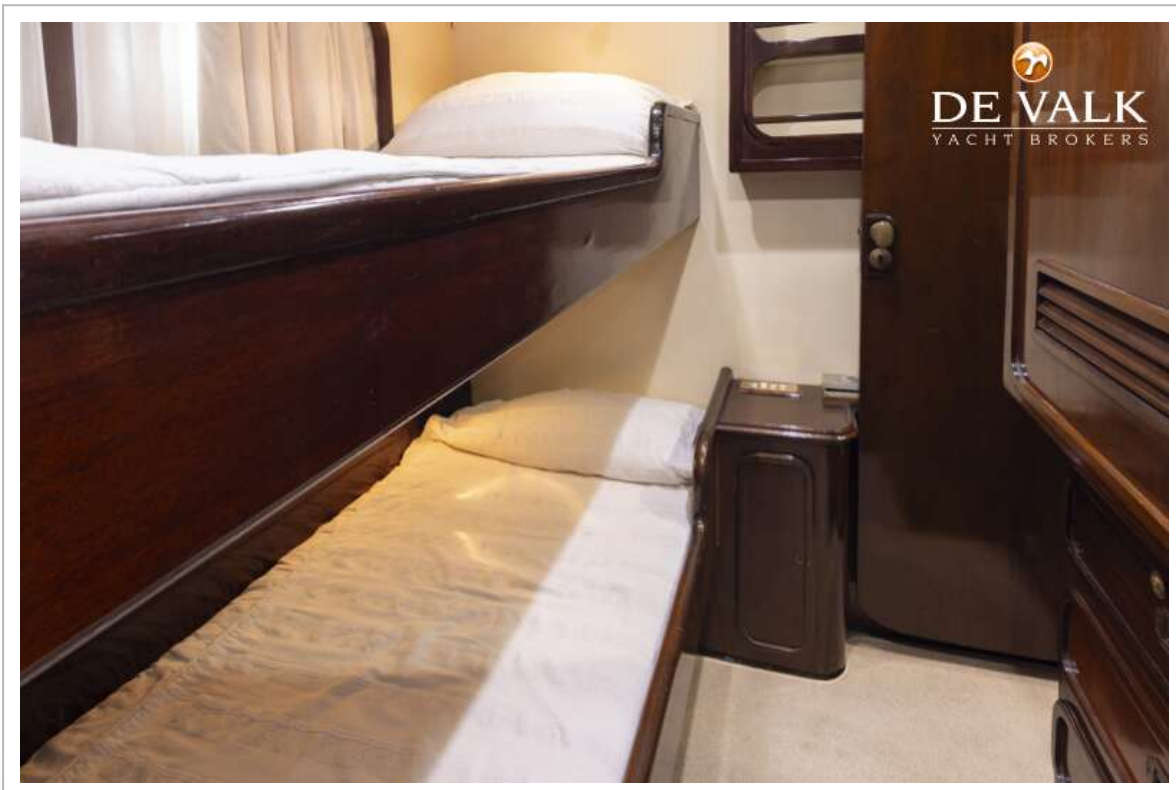
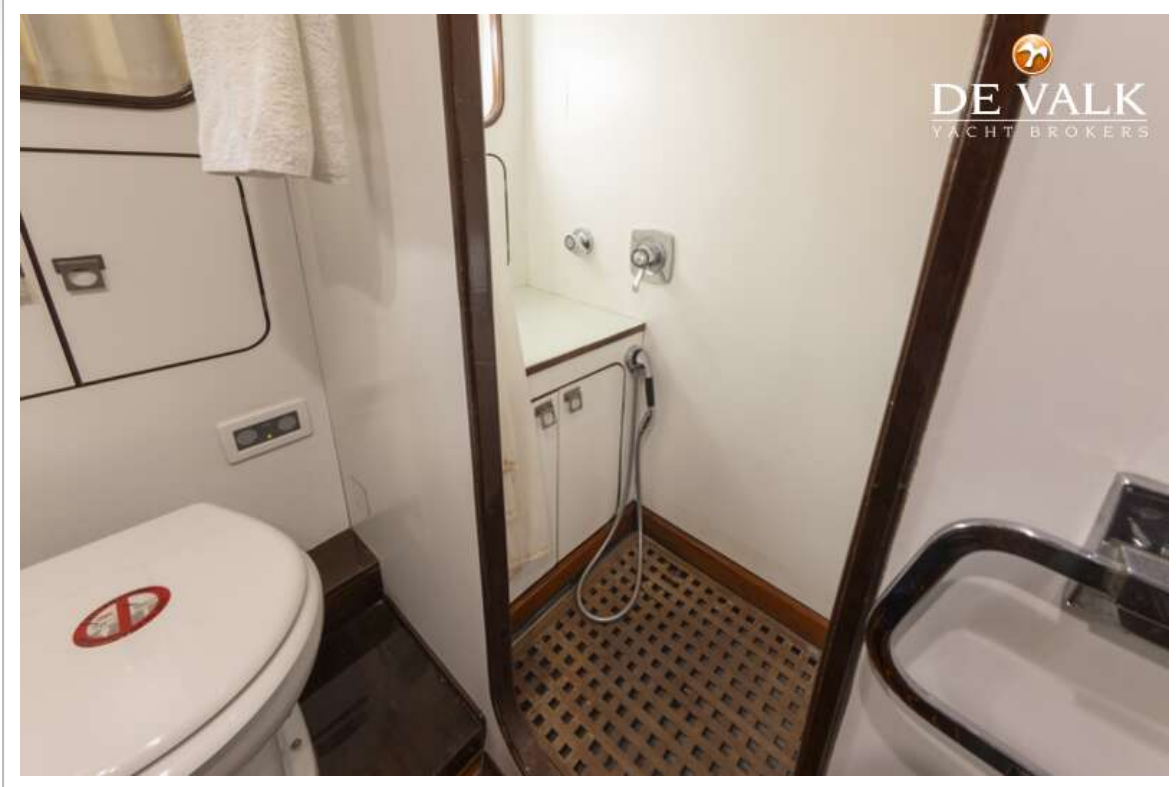




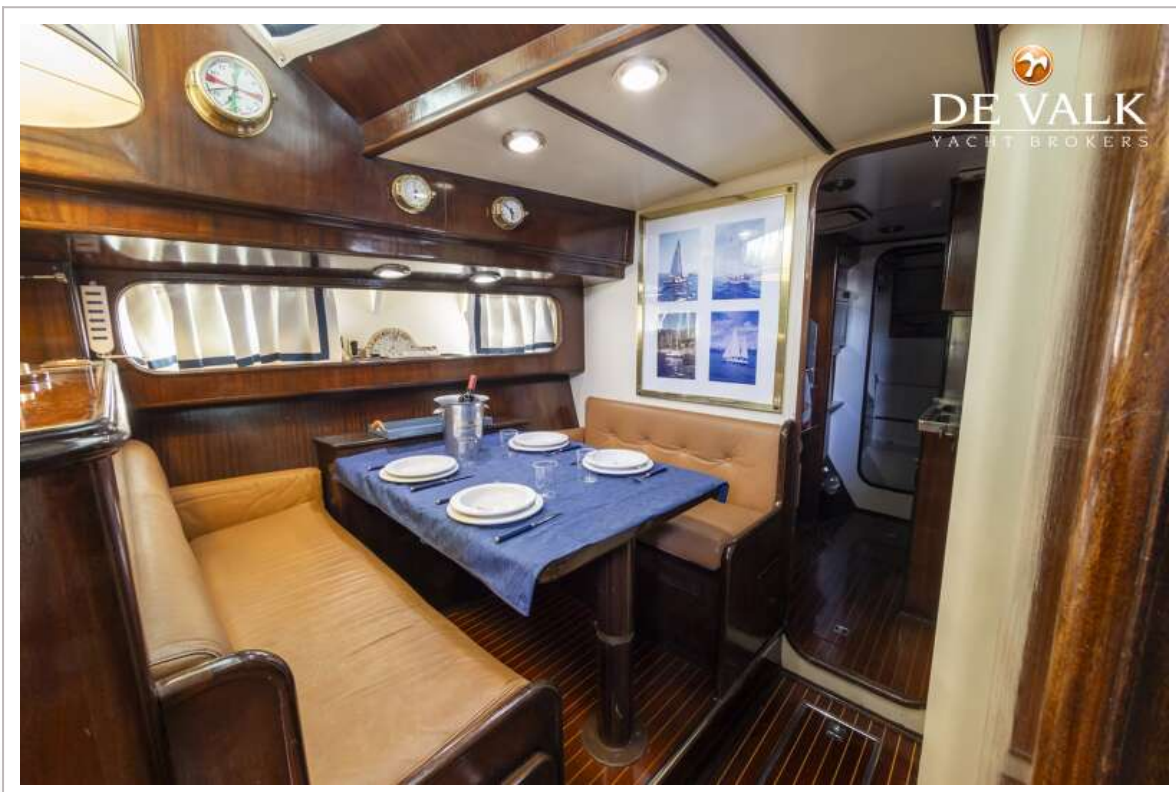
LAURENT GILES 16,45



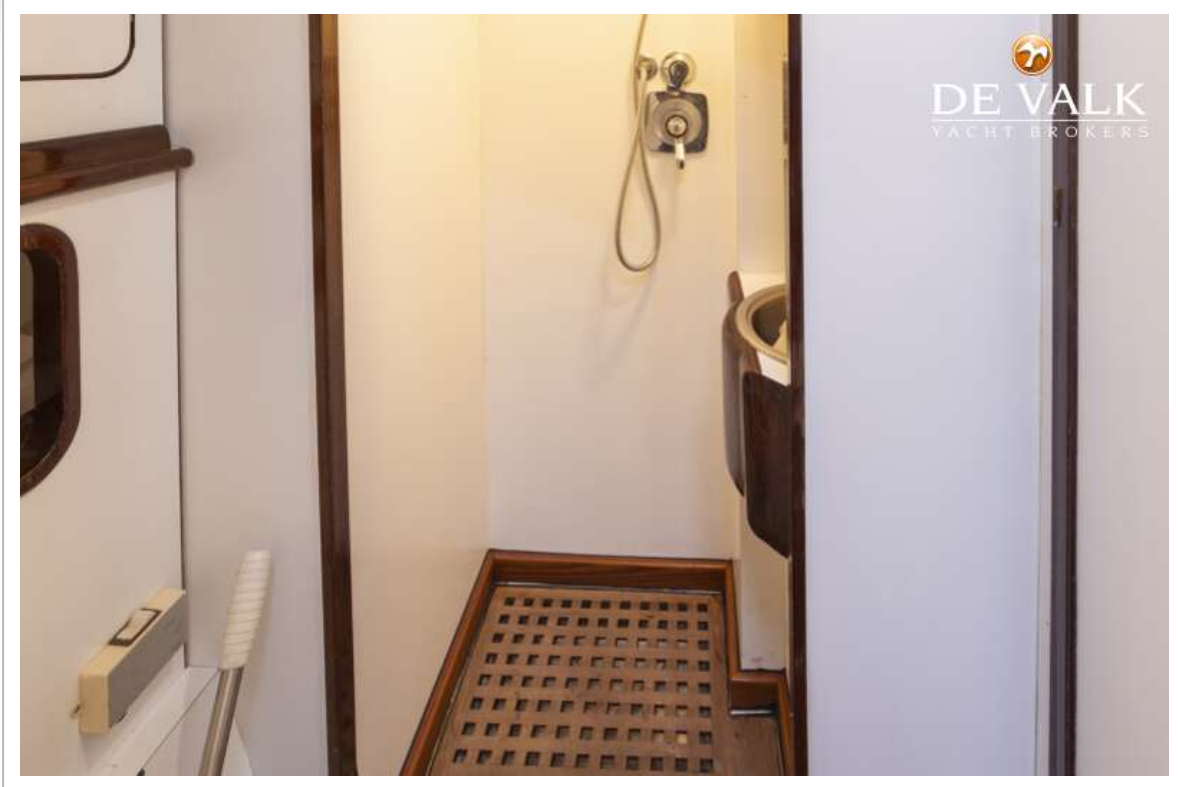


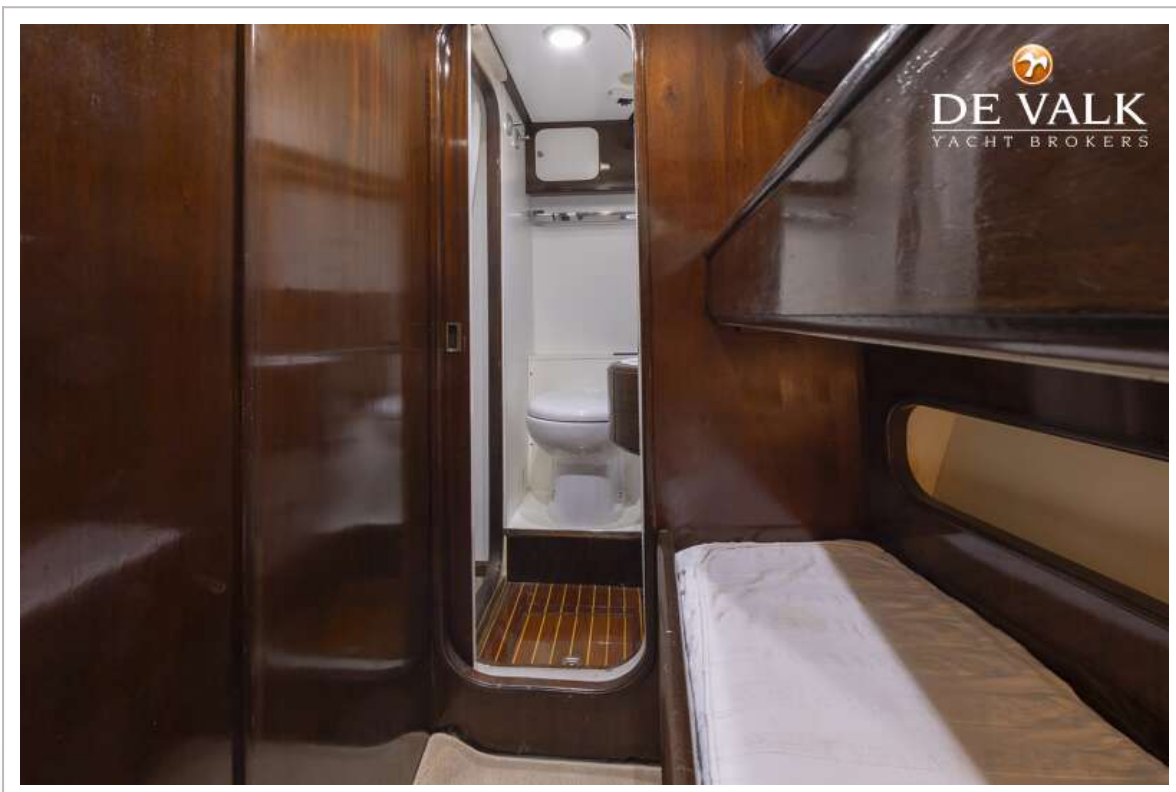
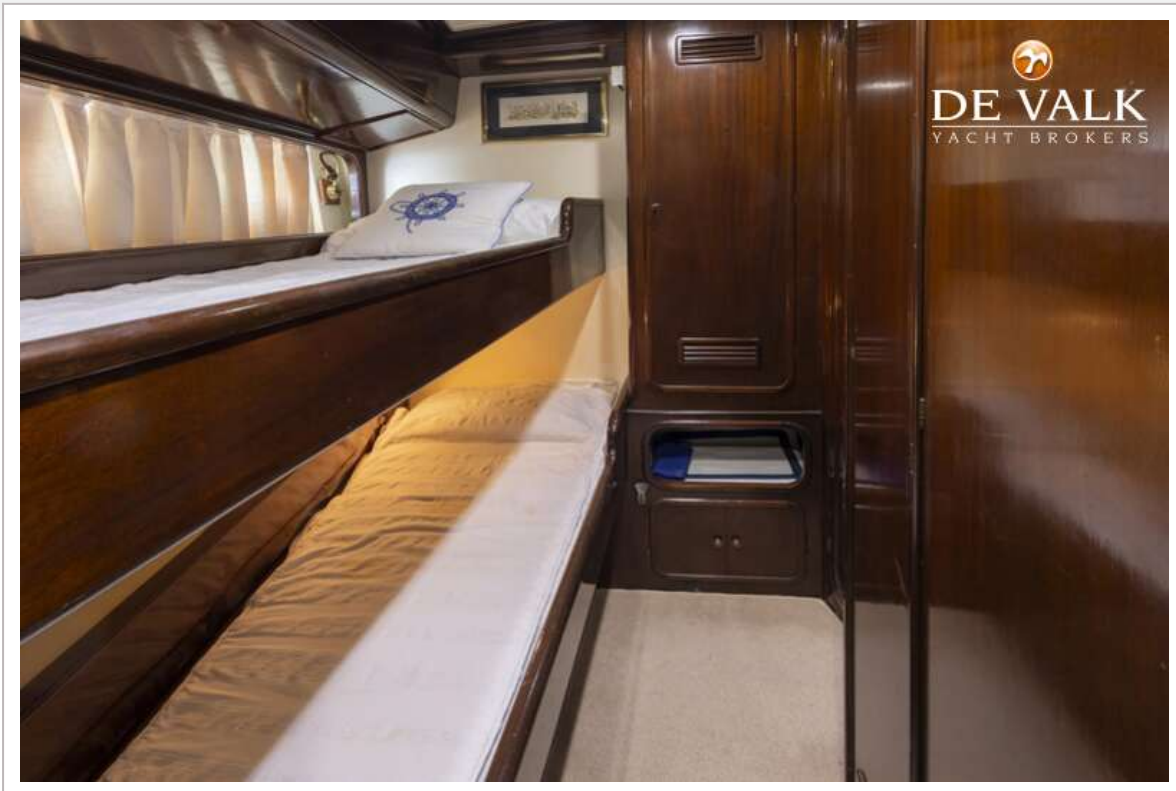


LAURENT GILES 16,45









LAURENT GILES 16,45

