



DE VALK
YACHT BROKERS



SCHÖRENKREUZER 30



DE VALK
YACHT BROKERS

BROKER'S COMMENTS

The boat "Carioca" was built in 1929 by TORE HOLM. Anyone who sails a 30-series Schärenkreuzer loves beauty. He is thrilled by the elegant aesthetics of its shape and by the sporty dynamism with which the slender ship cuts through the waves. Those who sail 30s enjoy the closeness and contact with the water and appreciate that their ship offers a high level of safety even in strong winds. The 30er Schärenkreuzer has been completely refitted. New battened teak deck, all screw fittings in plastic bushes, almost new sails, main, flyer storm jib flyer and foresail furling.

Hartmut Ross

SPECIFICATIONS

Dimensions	12.48 x 2.07 x 1.45 (m)	Builder	TORE HOLM
Built	1926	Cabins	
Material	Mahogany	Berths	2
Engine(s)	x	Hp/Kw	0.00 (hp), 0.00 (kw)
Asking price	€ 89.000 (VAT Exempt)	Lying	contact Kiel

CONTACT

Sales office	De Valk Kiel	Telephone	+49 1712312133
Address	Hermann Rennerstrasse 12 22609 Hamburg DE	E-mail	kiel@devalk.nl

DISCLAIMER

These particulars are given in good faith as supplied but cannot be guaranteed.



GENERAL

Model	SCHäRENKREUZER 30
Type	sailing yacht
LOA (m)	12,48
Beam (m)	2,07
Draft (m)	1,45
Headroom (m)	1,40
Year built	1926
Launched	1926
Builder	TORE HOLM
Country	Sweden
Designer	TORE HOLM
Displacement (t)	2,6
Hull material	mahogany
Hull colour	yes
Hull thickness (mm)	Ca. 25mm
Hull shape	Classic
Keel type	long keel
Superstructure material	wood
Deck material	teak
Deck finish	teak
Superstructure deck finish	teak
Cockpit deck finish	teak
Window frame	yes
Window material	glass
Deckhatch	yes
Tiller	yes
More info on paintwork	Ca. 12 Layer Epifanes

ACCOMMODATION

Berths	2
--------	---



Interior	mahogany
Floor	wood
Open cockpit	yes
Headroom saloon (m)	1,40
Opening door to aft deck	yes
Bed length (m)	2,00
Wardrobe	drawers

MACHINERY

Batteries	yes
Service battery	yes

NAVIGATION

Compass	yes
---------	-----

EQUIPMENT

Cockpit cover	yes
Winter cover	yes
Outboard	Honda
Fenders	yes
Mooring lines	yes
Tools	yes

RIGGING

Rigging	sloop
Material mast	aluminium
Mainsail	yes
Mainsail cover	yes
Genoa	yes
Genoa furler	yes

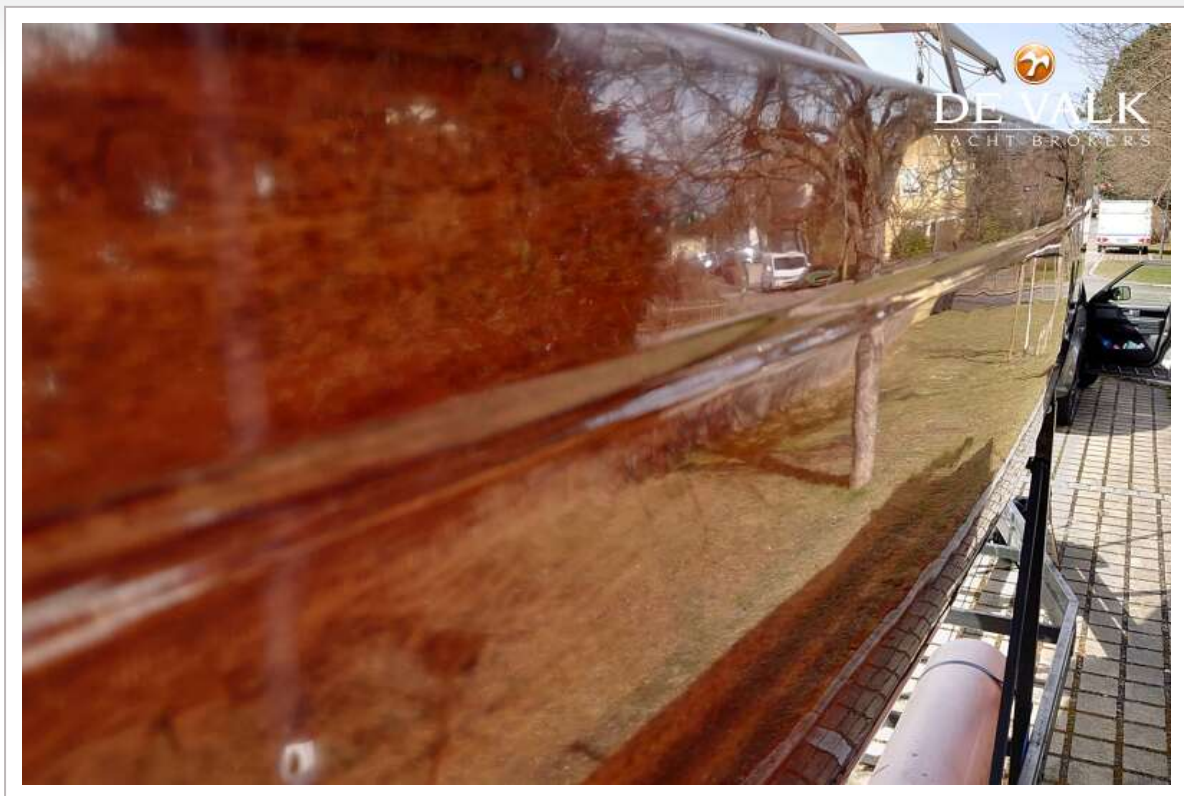


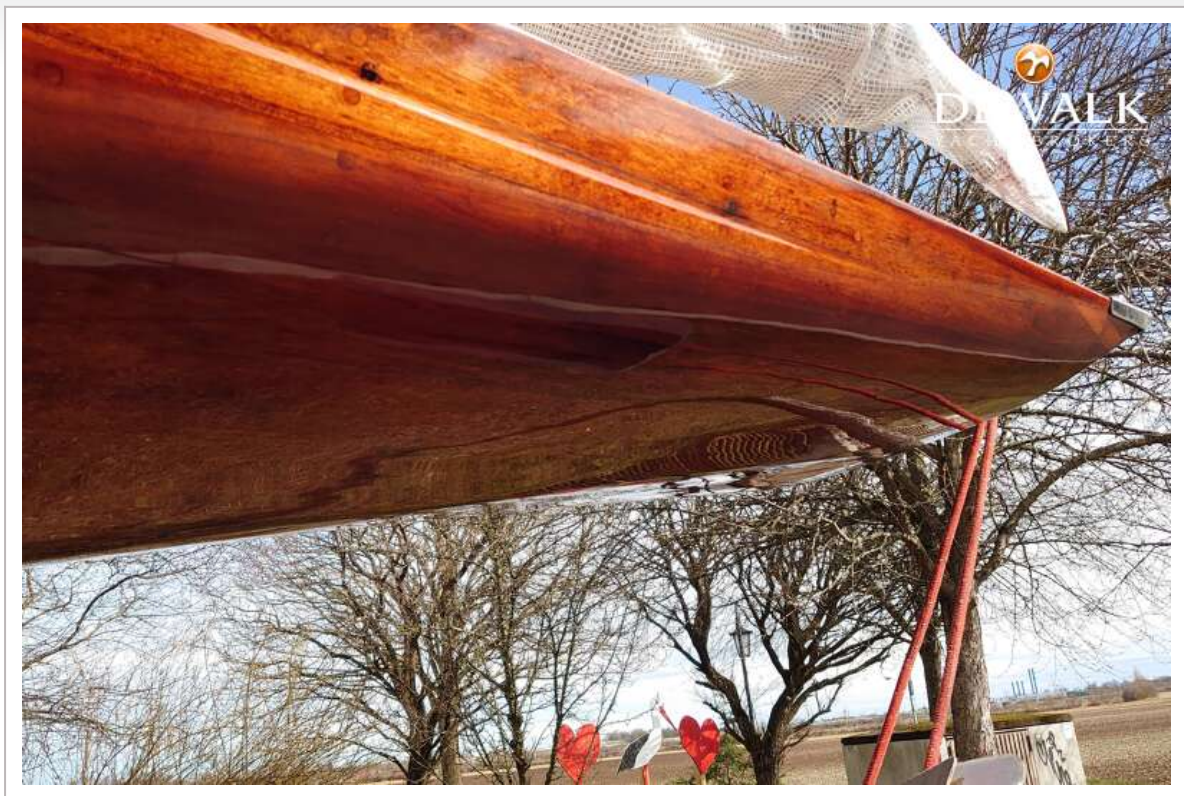
Spinnaker	yes
Stormjib	yes
Reefing System	yes
Primary sheet winch	yes
Secondary sheet winch	yes
Spi-pole	yes



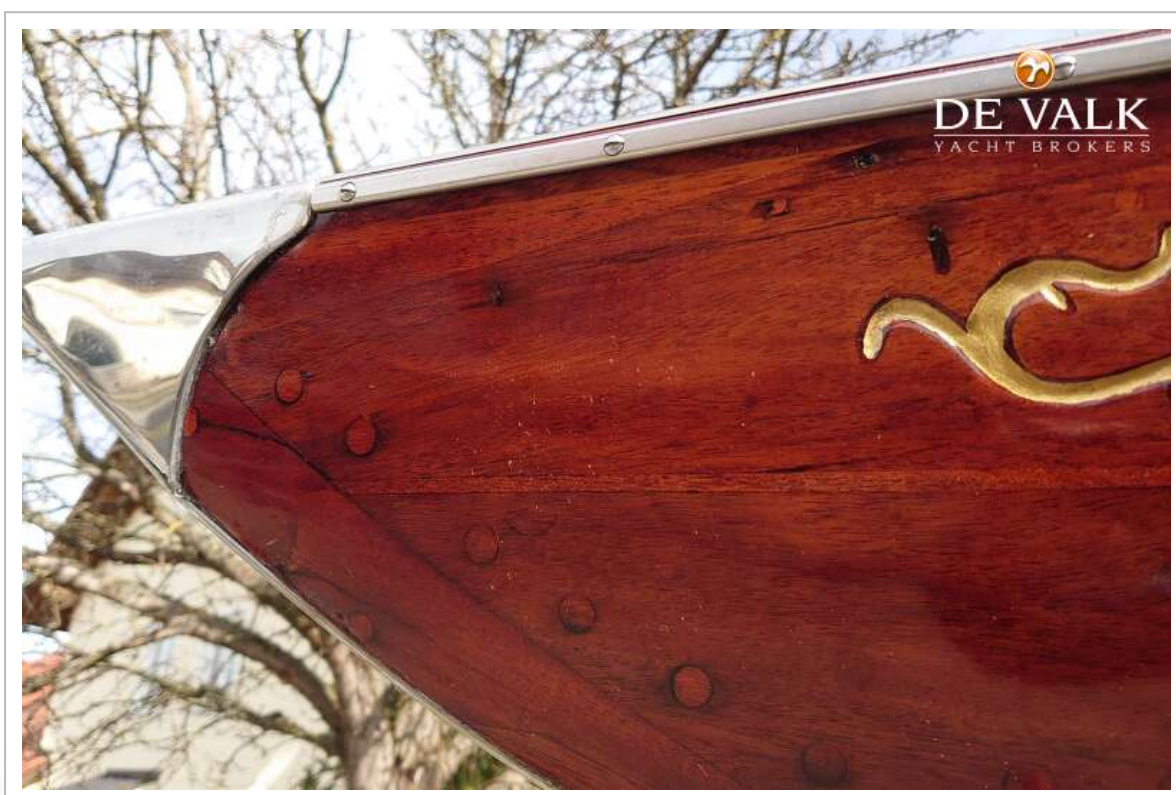
SCHÖRENKREUZER 30



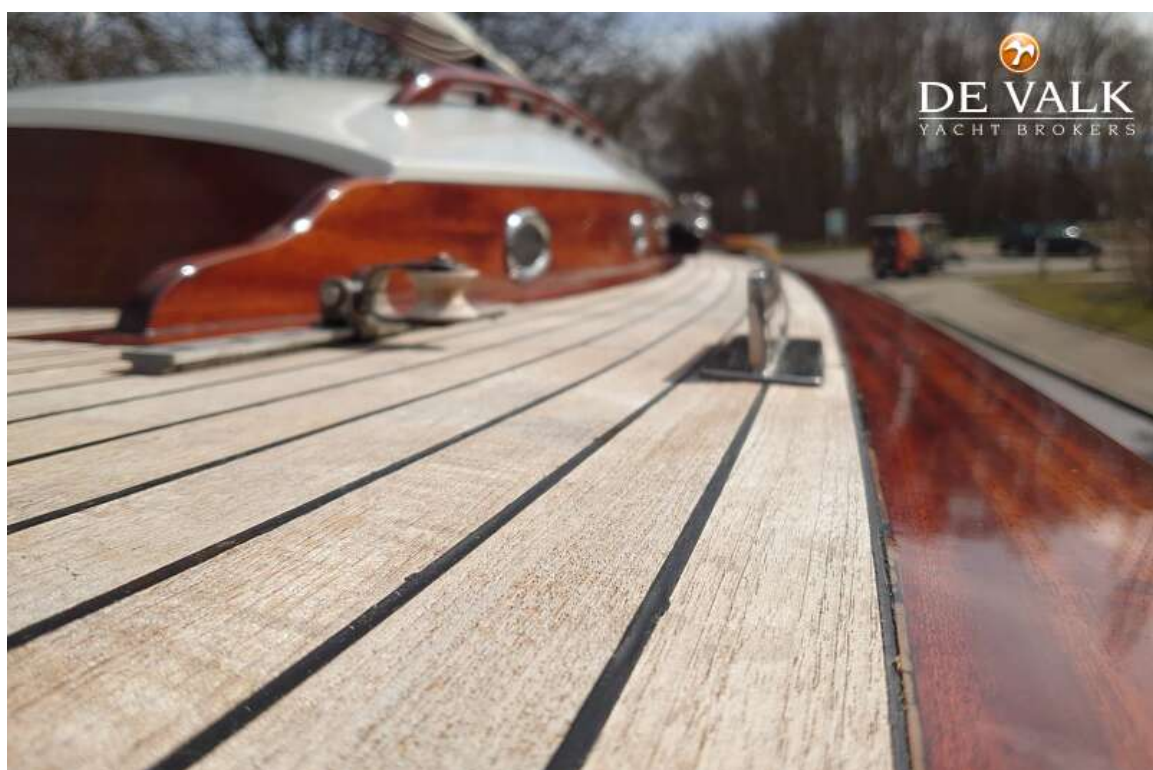


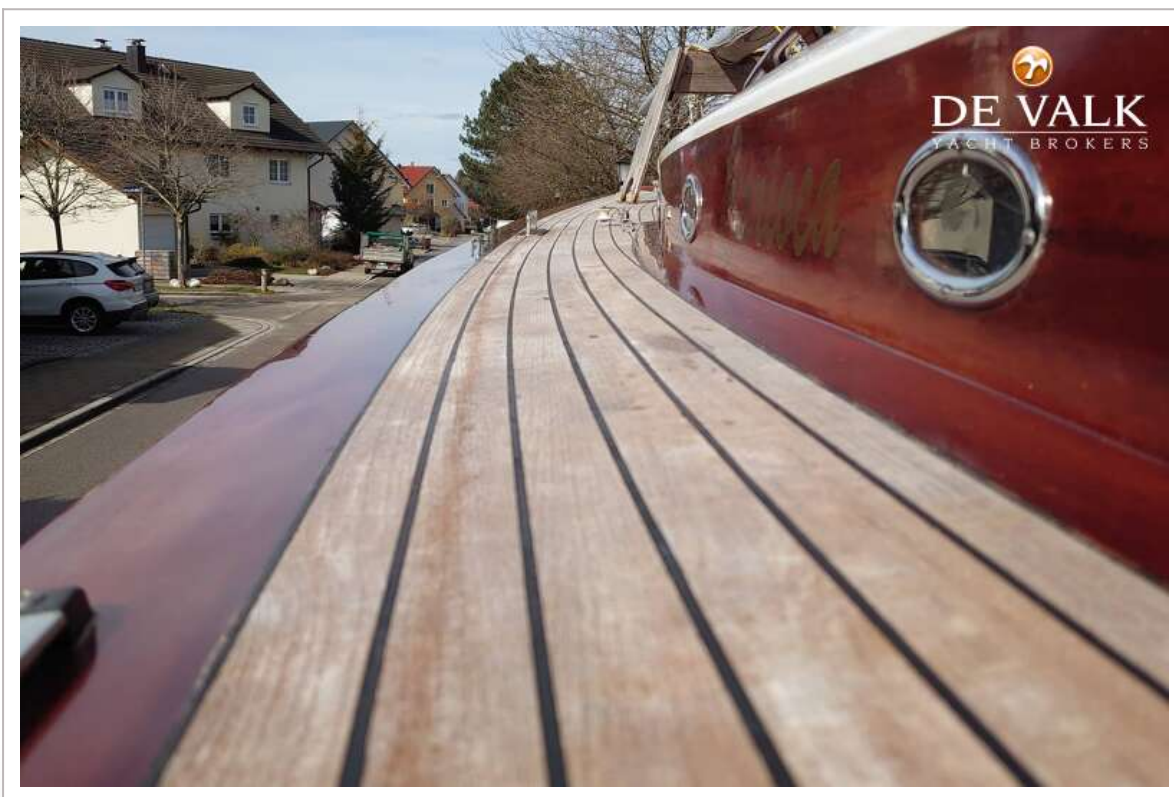


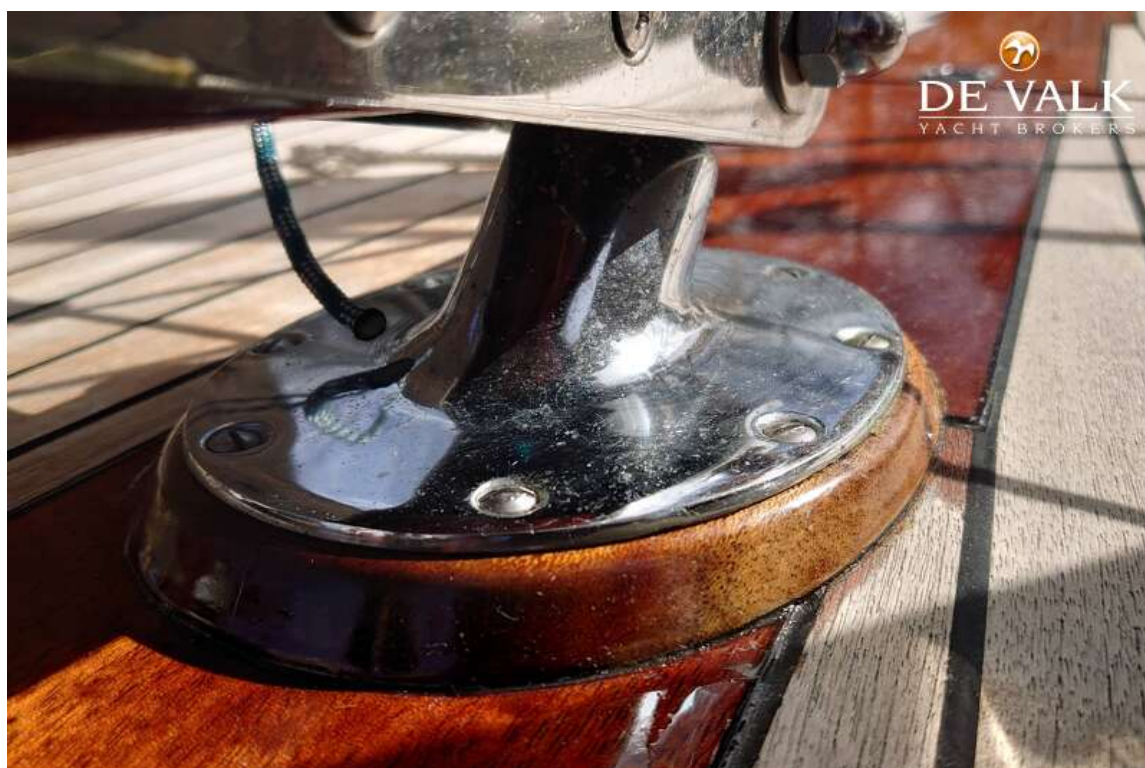
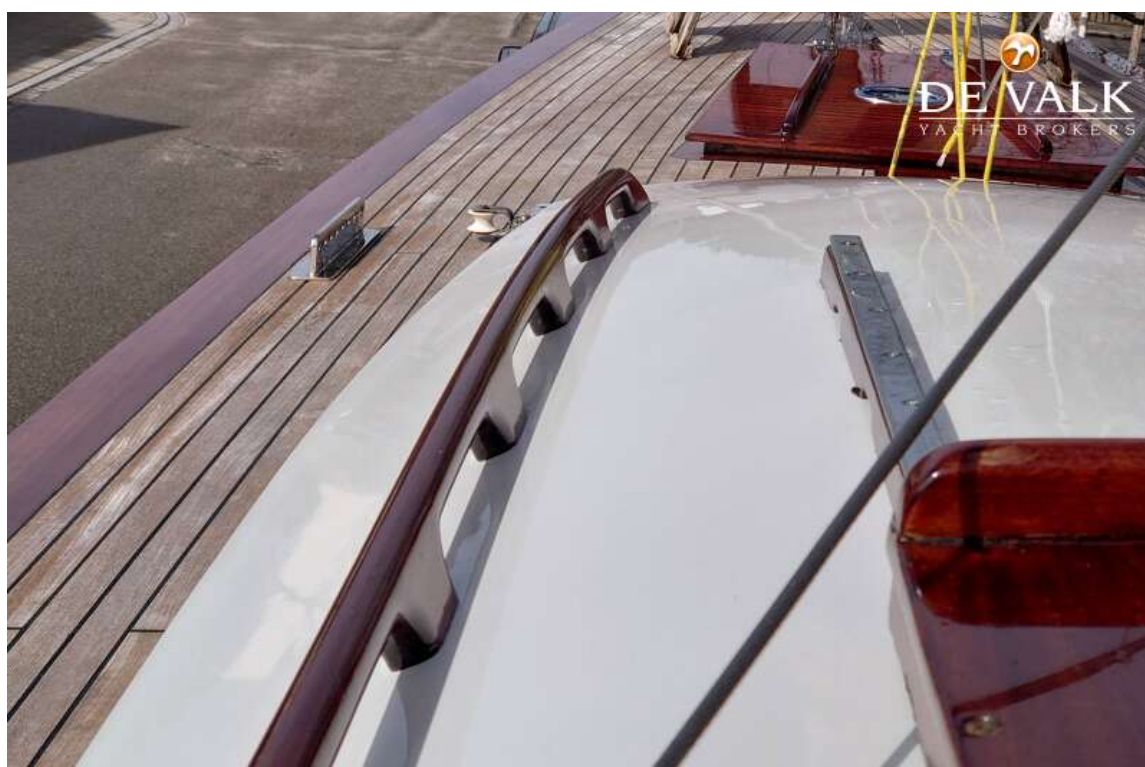
SCHÖRENKREUZER 30



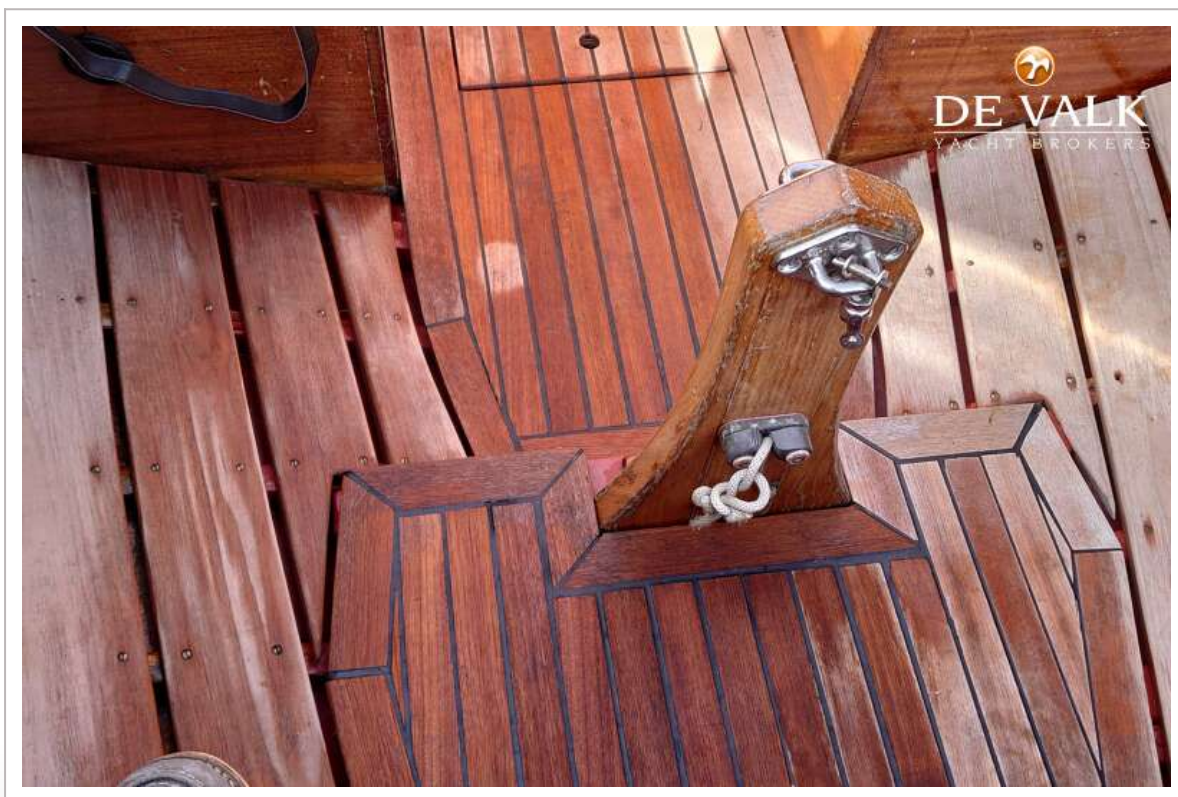








SCHÄRENKREUZER 30



SCHÖRENKREUZER 30

