



MANGUSTA 92



BROKER'S COMMENTS

Mangusta 92 is a motor yacht, with particularly refined and luxurious interiors. Fast, elegant and sexy, it is an example of Italian style combined with modern construction techniques. Designed in the Overmarine shipyards by the best builders in the world, the yacht is recognized in the world as an example of luxury but also of high performance. With a top speed of 35 knots and a cruising speed of 30, the Mangusta 92 brings with it performance and style at the highest levels.

Valerio Biondi

SPECIFICATIONS

Dimensions	28.00 x 6.60 x 3,20 / 1.22 (m)	Builder	Mangusta (Overmarine)
Built	2008	Cabins	4
Material	GRP	Berths	9
Engine(s)	2 x MTU 16V 2000 M93 diesel	Hp/Kw	2 x 2,400.00 (hp), 1,766.40 (kw)
Asking price	€ 2.400.000 (VAT Paid)	Lying	

CONTACT

Sales office	De Valk Antibes	Telephone	+33 492 91 0202
Address	2, Avenue de Verdun 06600 Antibes FR	E-mail	antibes@devalk.nl

DISCLAIMER

These particulars are given in good faith as supplied but cannot be guaranteed.



GENERAL

Model	MANGUSTA 92
Type	motor yacht
LOA (m)	28,00
Beam (m)	6,60
Draft (m)	1,22
Draft min (m)	3,20
Year built	2008
Builder	Mangusta (Overmarine)
Country	Italy
Designer	Stefano Righini Design
Displacement (t)	95,53
Gross tonnage	112
Hull material	GRP
Hull shape	Planing
Superstructure material	GRP
Fuel tank (litre)	7798 Liters
Freshwater tank (litre)	1401 Liters

ACCOMMODATION

Cabins	4
Berths	9
Crew cabin	2
Crew berths	4
Air-conditioning	Frigit
Galley	yes
Sink	yes
Cooker	induction
Microwave	yes
Fridge	yes
Freezer	yes



Dishwasher	yes
Coffee maker	yes
Owners cabin	French bed Master suite
Wardrobe	yes
Bathroom	yes
Toilet	yes
Toilet system	electric
Wash basin	in the bathroom
Guest cabin 1	French bed VIP stateroom
Wardrobe	yes
Bathroom	en suite
Toilet	en suite
Toilet system	electric
Wash basin	yes
Guest cabin 2	double bed Double cabin
Wardrobe	yes
Guest cabin 3	twin single Twin cabin
Guest cabin 4	1 bed

MACHINERY

No of engines	2
Make	MTU
Type	16V 2000 M93
HP	2400
kW	1766.40
Fuel	diesel
Maximum speed (kn)	33
Cruising speed (kn)	30
Range (nm)	350
Engine hours	1451
Bowthruster	hydraulic 27kW



Propeller type	2x KaMeWa jets 56 A
Generator	yes
Running hours generator	Approx 2791 per 13 jan 2023
Generator 2	yes
Running hours generator 2	Approx 2963 per 13 jan 2023

NAVIGATION

Compass	Simrad RCG 50
Depth sounder	Simrad EB/PC
Repeater	AR 78
Autopilot	Simrad J50
Radar	Simrad
GPS	SIMRAD CP 31
Plotter	Simrad
Weather receiver	Airmar ultrasonic weather station with transducer
Navtex	Furuno NX 700
Electronic chart(s)	Simrad
Camera	2x panasonic WVCS 854

EQUIPMENT

Dinghy	Tender Williams water jet
TV	Sony TV 40W3000TNT
DVD player	Denon DVD2930 DVD/CD
Surround Sound System	JM Lab Cub sun base loudspeakers
Cockpit speakers	yes
Speakers in salon	yes
Speakers in cabin	yes





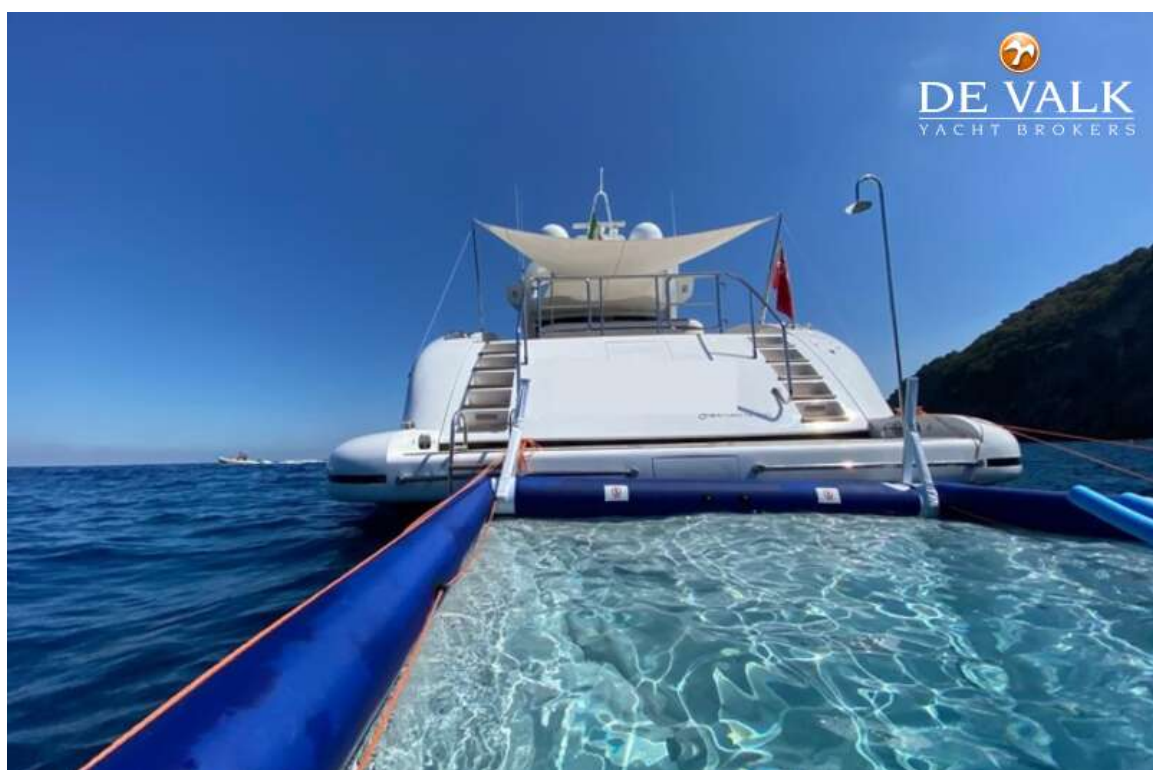
MANGUSTA 92



MANGUSTA 92



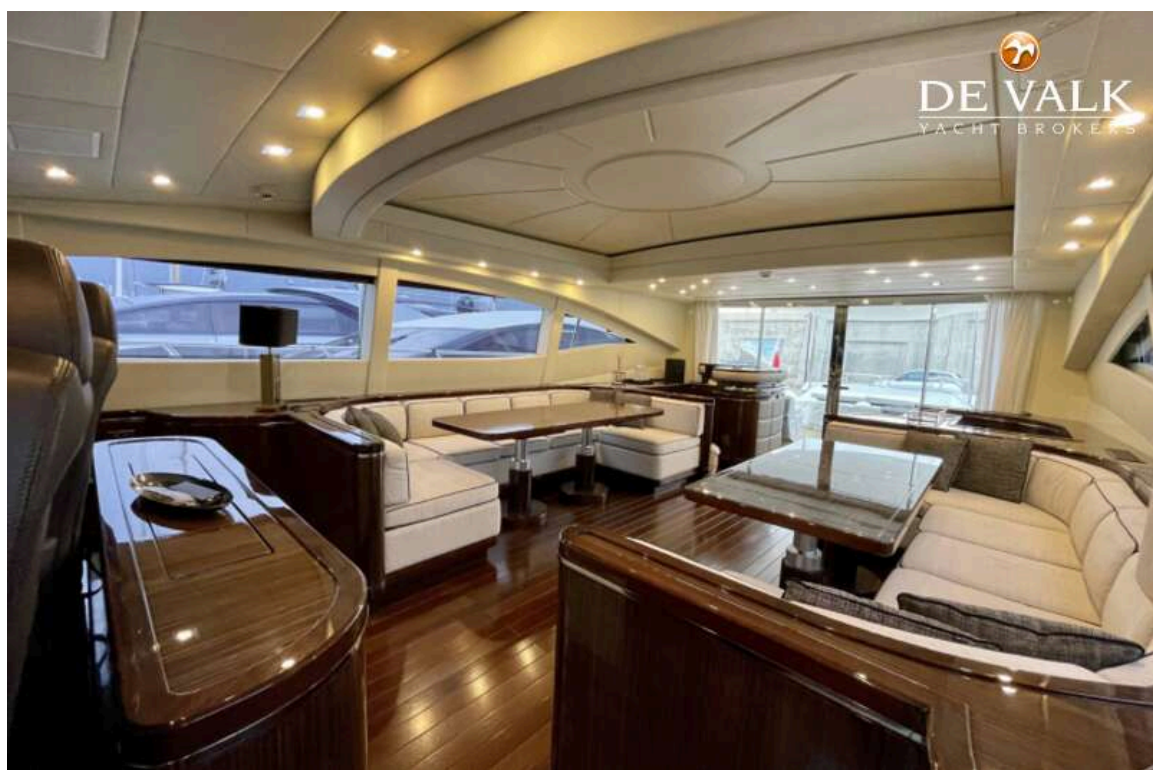
MANGUSTA 92



MANGUSTA 92



MANGUSTA 92

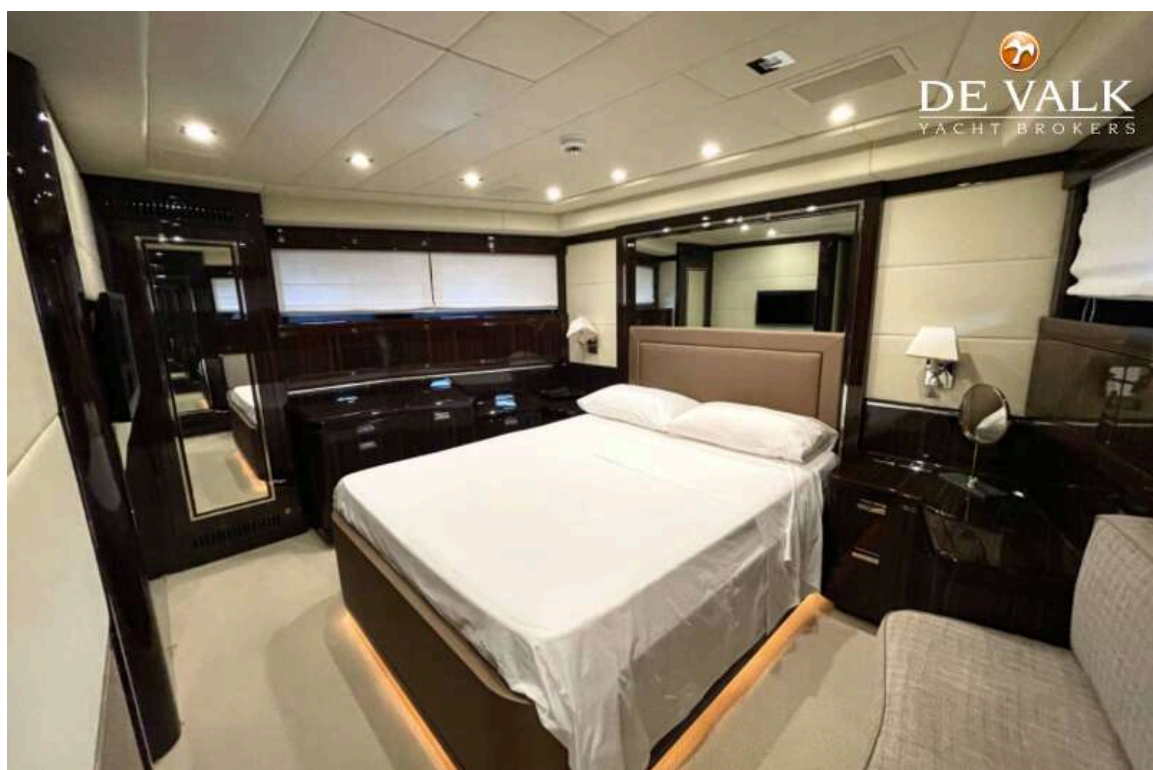
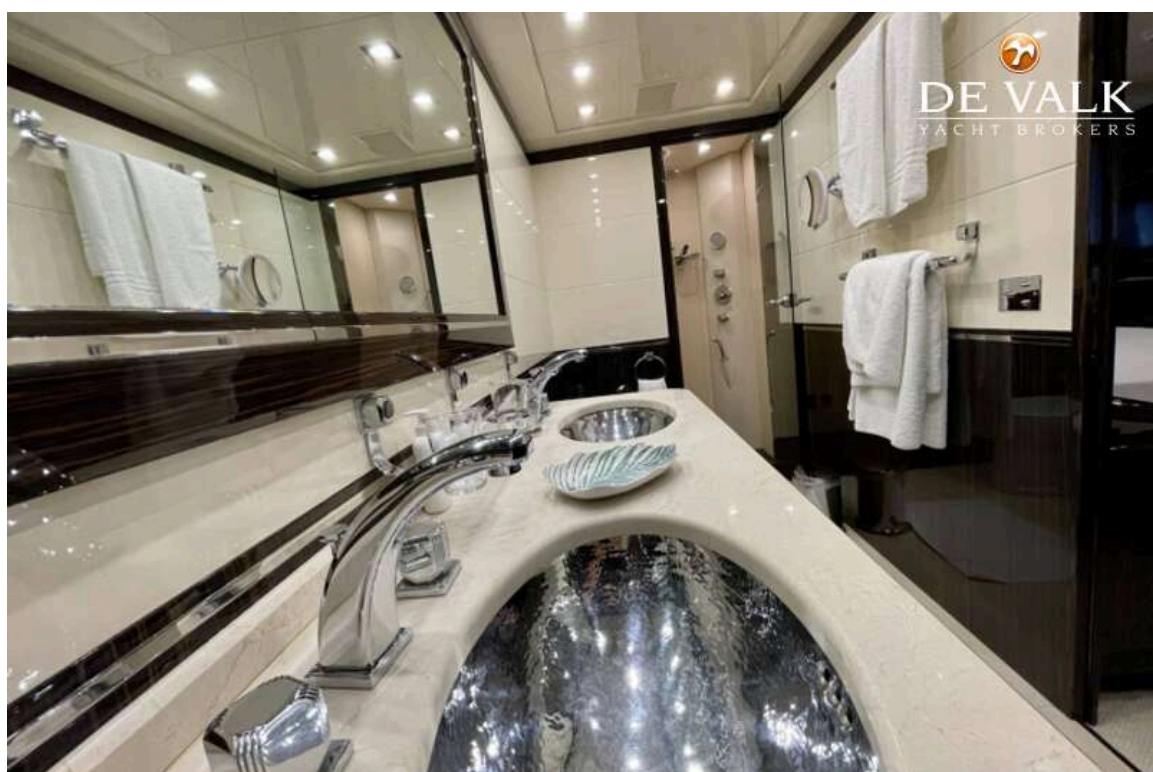


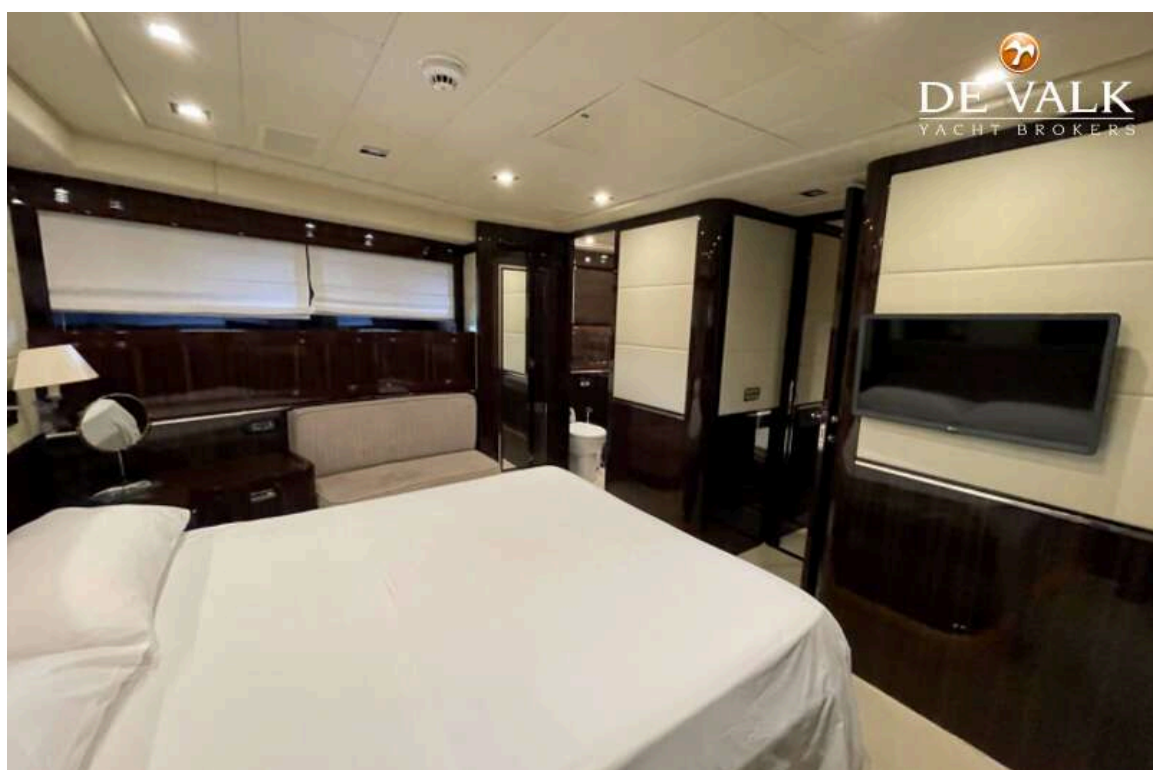
MANGUSTA 92



MANGUSTA 92







MANGUSTA 92



