



DE VALK
YACHT BROKERS



SVALBARD 41 LIFT KEEL



DE VALK
YACHT BROKERS

SVALBARD 41 LIFT KEEL

BROKER'S COMMENTS

"The owner is a yacht designer and it shows. He designed this light displacement, fast cruisingyacht and used his skills and experience to create this shallow draft "Lift keel" (centerboard) sailing yacht to enjoy performance sailing in comfort, security and to go anywhere he likes as draft is no longer an issue. The layout has 3 separate cabins for family and friends. So if you are looking for something exceptional, the Svalbard 41 may be for you to enjoy. Built in strong grp foam composite she is well insulated to."

Ger Bayens

SPECIFICATIONS

| | | | |
|---------------------|--------------------------------|----------------|----------------------------|
| Dimensions | 12,50 x 3,95 x 2,40 / 0,95 (m) | Builder | Bosgraaf-Feis, owner built |
| Built | 2016 | Cabins | 3 |
| Material | GRP | Berths | 7 |
| Engine(s) | 1 x Mitsubishi S3L diesel | Hp/Kw | 27 (hp), 19,87 (kw) |
| Asking price | EUR 175.000 (vat: paid) | Lying | The Netherlands |

CONTACT

| | | | |
|---------------------|---|------------------|----------------------|
| Sales office | De Valk Thuishaven | Telephone | +31 35 5829042 |
| Address | Peperstraat 7 1411 PX Naarden The Netherlands | Fax | +31 35 5829019 |
| | | E-mail | thuishaven@devalk.nl |

DISCLAIMER

These particulars are given in good faith as supplied but cannot be guaranteed and cannot be used for contracts.



SVALBARD 41 LIFT KEEL

GENERAL

| | |
|-----------------------------------|------------------------------|
| Model | SVALBARD 41 LIFT KEEL |
| Type | sailing yacht |
| LOA (m) | 12,50 |
| LWL (m) | 11,56 |
| Beam (m) | 3,95 |
| Draft (m) | 0,95 |
| Draft min (m) | 2,40 |
| Air draft (m) | 19,00 |
| Headroom (m) | 1,94 |
| Year built | 2016 |
| Launched | 2016 |
| Builder | Bosgraaf-Feis, owner built |
| Country | The Netherlands |
| Designer | Peter Bosgraaf |
| Displacement (t) | 8,5 |
| Ballast (tonnes) | lead in steel 2,7 |
| Hull material | GRP |
| Hull colour | antracite gray |
| Hull thickness (mm) | GRP/H80 foam composite, 30mm |
| Hull shape | multi hard chine |
| Keel type | lifting keel |
| Superstructure material | GRP/H80 foam composite |
| Rubbing strake | yes |
| Deck material | GRP/H80 foam composite |
| Deck finish | non-skid paint |
| Superstructure deck finish | yes |
| Cockpit deck finish | non-skid paint |
| Antifouling (year) | 2023 |
| Deckhatch | Moonlight |
| Portholes | Moonlight |



SVALBARD 41 LIFT KEEL

| | |
|-----------------------------------|---|
| Insulation | H80 foamcore composite |
| Fuel tank (litre) | polyethylene 95 |
| Freshwater tank (litre) | 135 + 100 |
| Blackwater tank (litre) | polyethylene 60 |
| Blackwater tank extraction | uw-line |
| Tiller | yes |
| Emergency tiller | with extention |
| Extra info | There is an onboard 750 ltr/kg water-ballast system to get the best performance out of this fast light displacement, shorthanded cruising yacht. Not mandatory to use but easy to operate when you want to. |
| Extra info | The liftkeel is operated with an electric/hydraulic pump. The keel can be fixed with a pin in down and up position. |

ACCOMMODATION

| | |
|------------------------------|-------------------------------------|
| Cabins | 3 |
| Berths | 7 |
| Interior | simple-modern |
| Floor | wood |
| Headroom saloon (m) | 1,94 |
| Heating | diesel ducted hot air |
| Chart table | yes |
| Aft Cabin | 2 x |
| Dinette | yes |
| Convertible berth | in salon starboard; 2,08 x 0,60 mtr |
| Galley | yes |
| Countertop | wood |
| Sink | 1 x |
| Cooker | calor gas Dometic 3 burner |
| Oven | oven and grill |
| Fridge | toploading Isotherm 12v |
| Hot water system | 220V + engine |
| Water pressure system | electrical |



SVALBARD 41 LIFT KEEL

| | |
|-----------------------|------------------------------------|
| Owners cabin | v-bed |
| Bed length (m) | 2,05 x 1,80 mtr, headroom 1,94 mtr |
| Wardrobe | hanging and shelves |
| Bathroom | shared |
| Toilet | shared |
| Toilet system | manual |
| Wash basin | in the bathroom |
| Shower | shared |
| Extra info | bathroom headroom 1,90 mtr |
| Guest cabin 1 | double bed |
| Bed length (m) | 2,00 x 1,30 mtr, headroom 1,90 mtr |
| Wardrobe | hanging and shelves |
| Guest cabin 2 | double bed |
| Bed length (m) | 2,00 x 1,30 mtr, headroom 1,90 mtr |
| Wardrobe | hanging and shelves |

MACHINERY

| | |
|------------------------------|-------------------------------------|
| No of engines | 1 |
| Make | Mitsubishi |
| Type | S3L |
| HP | 27 |
| kW | 19.87 |
| Fuel | diesel |
| Maximum speed (kn) | 7 |
| Cruising speed (kn) | 6 |
| Consumption (l/hr) | 2 |
| Engine cooling system | freshwater heat exchanger |
| Drive | shaft |
| Engine controls | bowden cable |
| Gearbox | mechanical TMC60 |
| Bowthruster | electric Vetus proportional (76kgf) |



SVALBARD 41 LIFT KEEL

| | |
|---------------------------------|---------------------|
| Exhaust | watercooled |
| Propeller type | folding Flex-o-fold |
| Propeller blades | 2 |
| Propeller shaft material | stainless steel |
| Shaft lubrication | water |
| Electric bilge pump | yes |
| Electrical installation | 12/220v |
| Start battery | 1 x (2016) |
| Service battery | 2 x 120ah (2016) |
| Battery charger | yes |
| Inverter | yes |
| Solar panel | 2 x 90 watt |
| Shorepower | with cable |

NAVIGATION

| | |
|--------------------------|----------------------------|
| Compass | Plastimo |
| Electric compass | via the autopilot |
| Depth sounder/log | Autohelm ST60 Tridata |
| Windset | Autohelm ST60 |
| VHF | Advanseal |
| Autopilot | Raymarine P70S |
| AIS transceiver | AmTrac Class B transceiver |
| Navigation lights | yes |

EQUIPMENT

| | |
|-------------------------|-----------------------------------|
| Fixed windscreen | Fixed dodger for ample protection |
| Boarding ladder | yes |
| Transom door | yes |
| Anchor | Bruce |



SVALBARD 41 LIFT KEEL

| | |
|-----------------------------------|-----------------------------|
| Anchor chain | 35 mtr |
| Anchor 2 | Fortress FX23 + line |
| Windlass | manual |
| Sea railing | wire |
| Grab rail (superstructure) | yes |
| Railing side opening gates | 2 x |
| Pushpit | yes |
| Pulpit | yes |
| Lifebuoy | yes |
| Fenders | yes |
| Mooring lines | yes |
| Extra info | pensionado seats on pushpit |

RIGGING

| | |
|--------------------------------|-------------------------|
| Rigging | sloop |
| Standing rigging | Rod |
| Brand mast | John mast |
| Material mast | aluminium |
| Keel stepped mast | yes |
| Mainsail | partially full battened |
| Mainsail cover | yes |
| Battcars | with track |
| High aspect | yes |
| Genoa cover | yes |
| Code Zero | with roller North Sails |
| Gennaker | with squeezer |
| Staysail | yes |
| Removable innerforestay | yes |
| Reefing System | slabreefing |
| Backstay adjuster | tackle |



SVALBARD 41 LIFT KEEL

| | |
|---------------------------|--|
| Boomvang | yes |
| Genoa sheetwinches | 2 x Anderssen 46ST |
| Halyard winches | 2 x Anderssen 40ST |
| Gennaker pole | yes |
| Extra info | Dyneema backstay, Harken deck hardware |



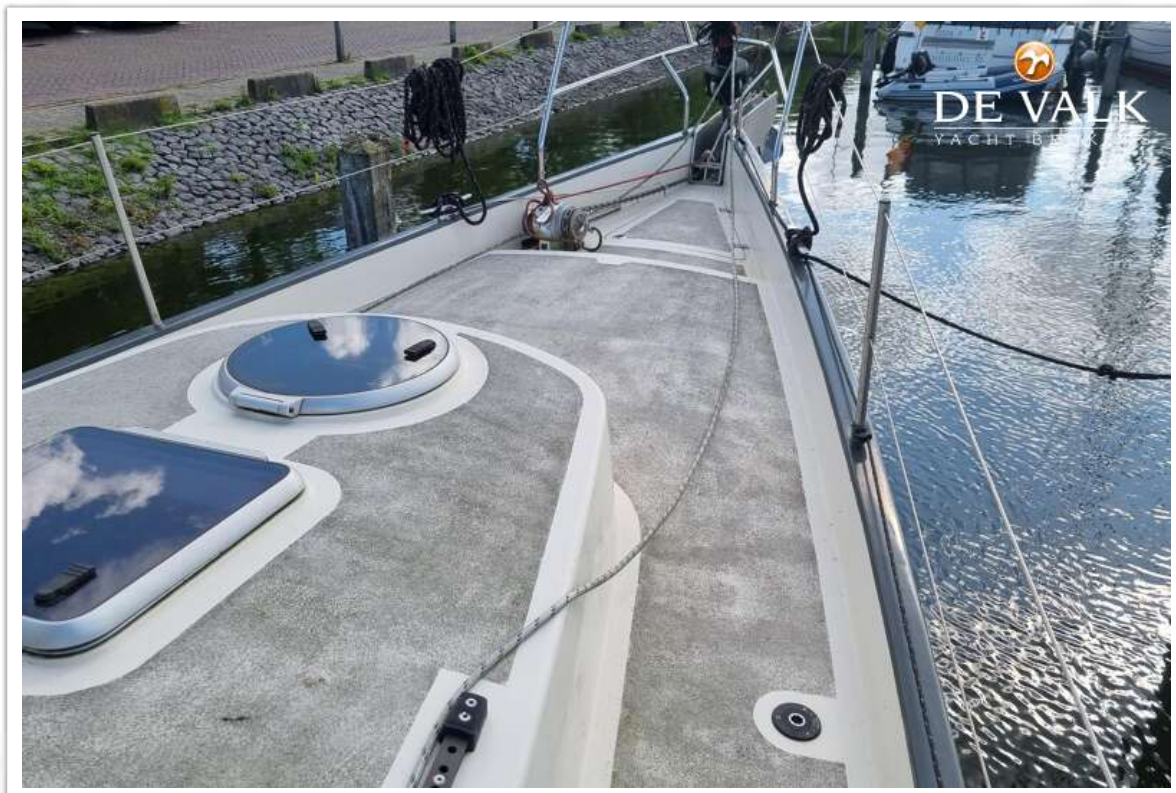
SVALBARD 41 LIFT KEEL



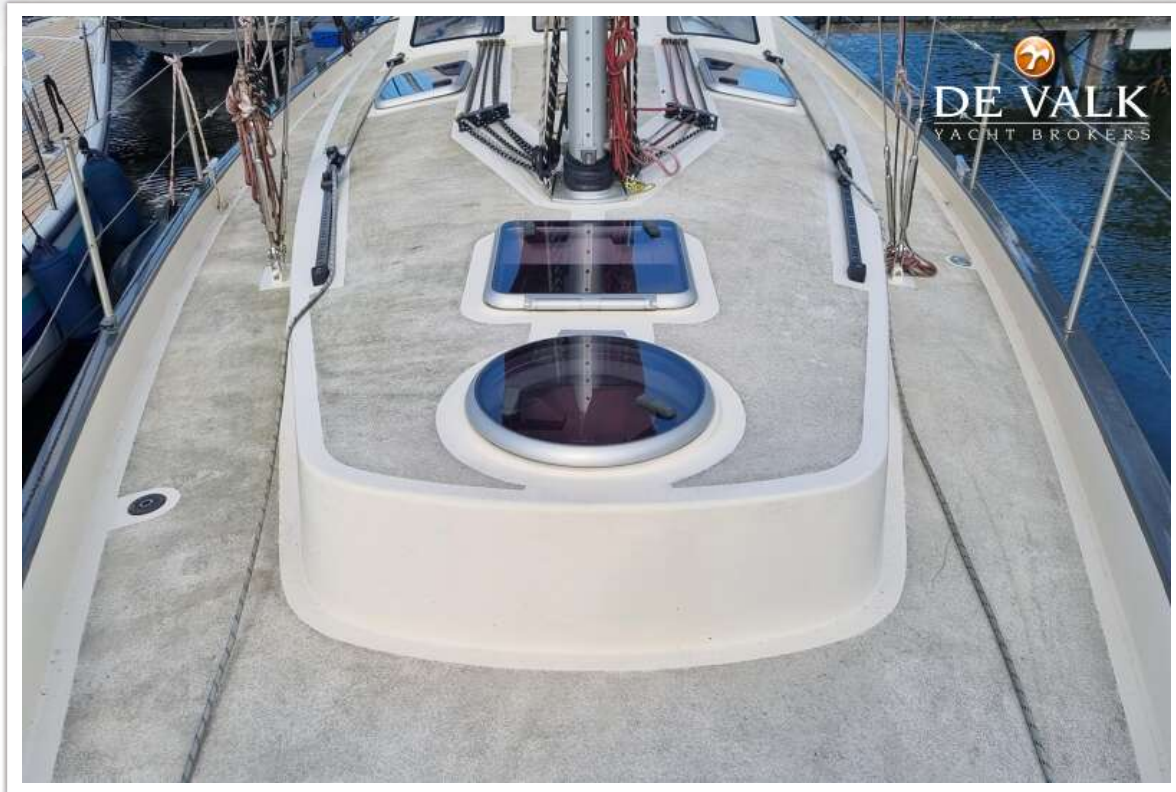
SVALBARD 41 LIFT KEEL



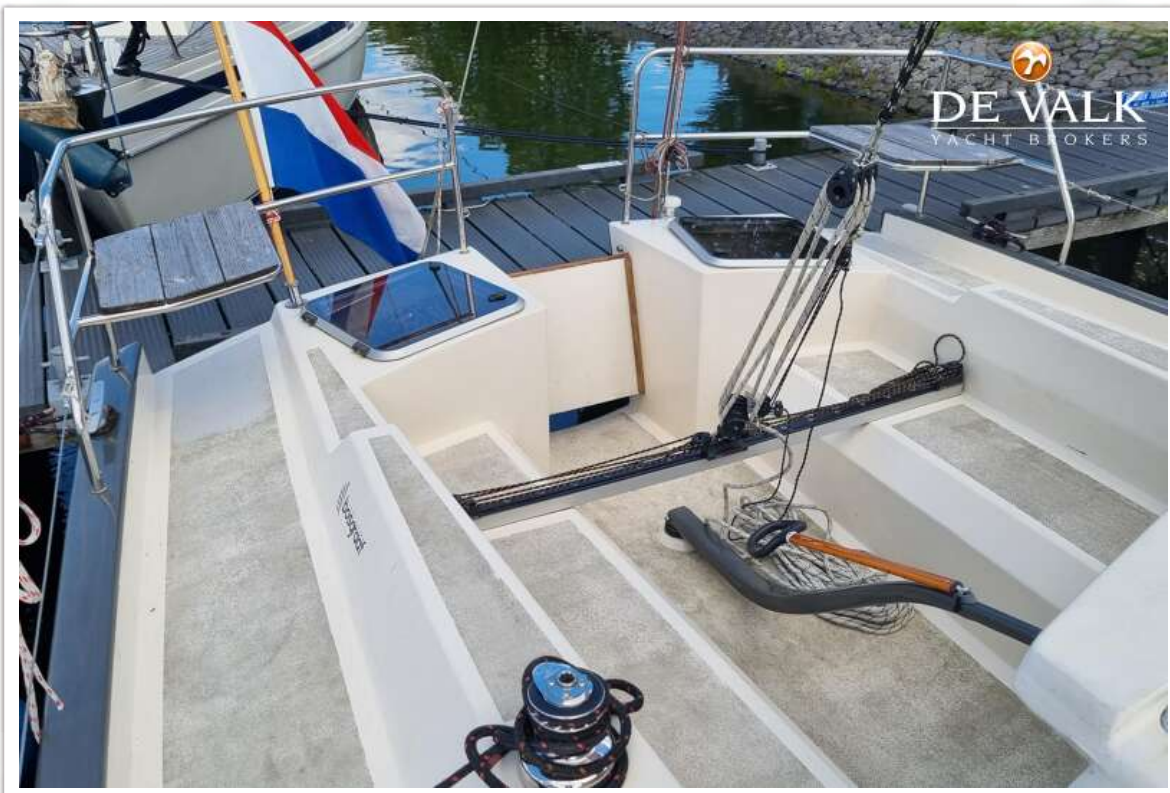
SVALBARD 41 LIFT KEEL



SVALBARD 41 LIFT KEEL



SVALBARD 41 LIFT KEEL



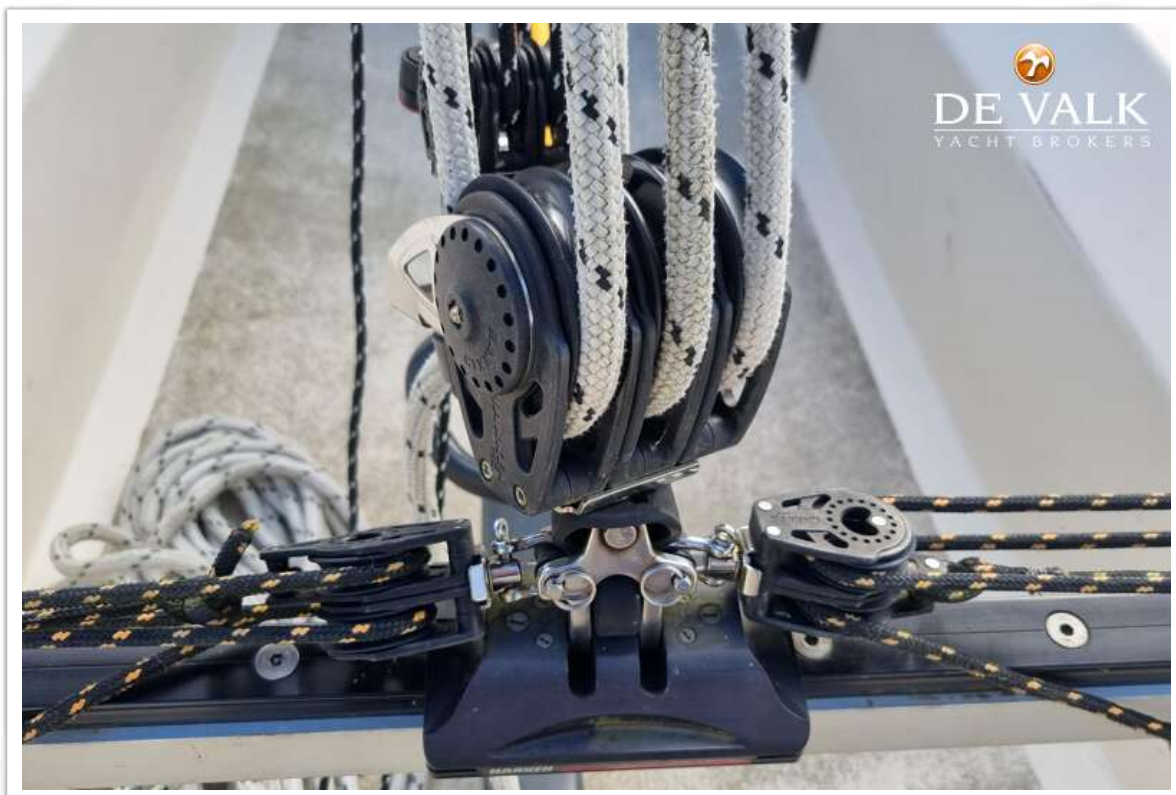
SVALBARD 41 LIFT KEEL



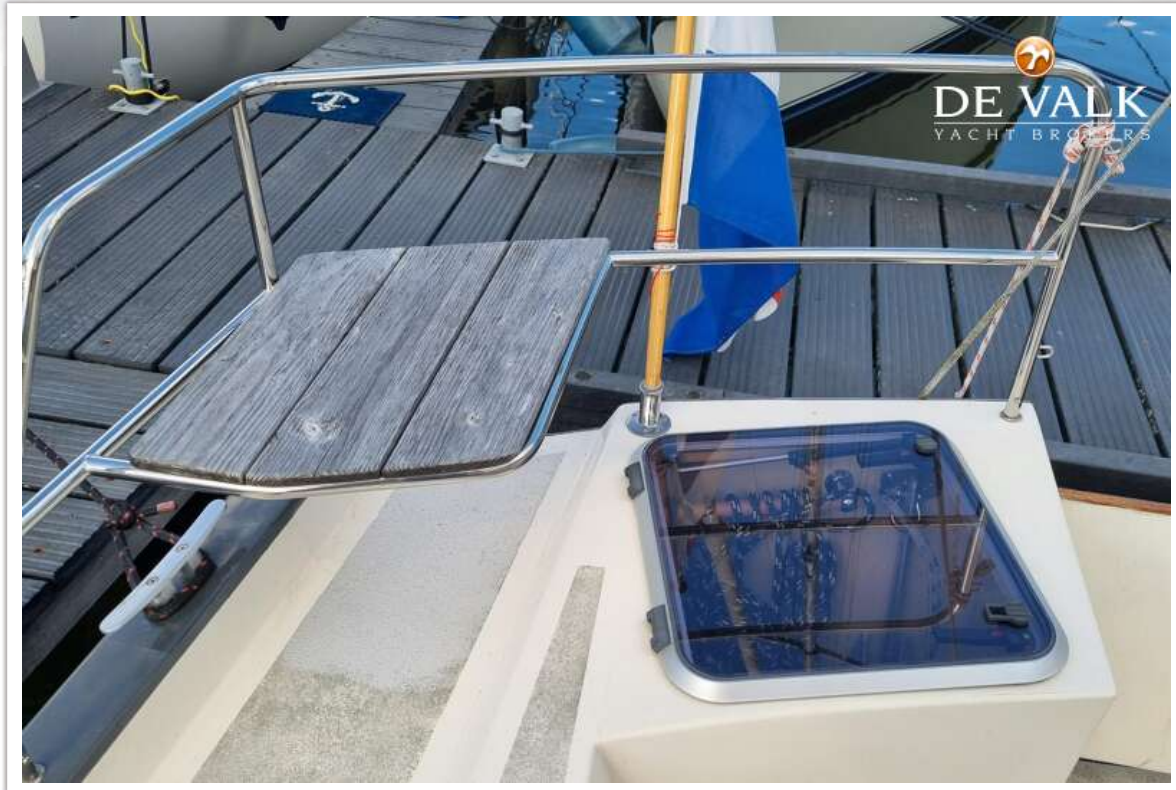
SVALBARD 41 LIFT KEEL



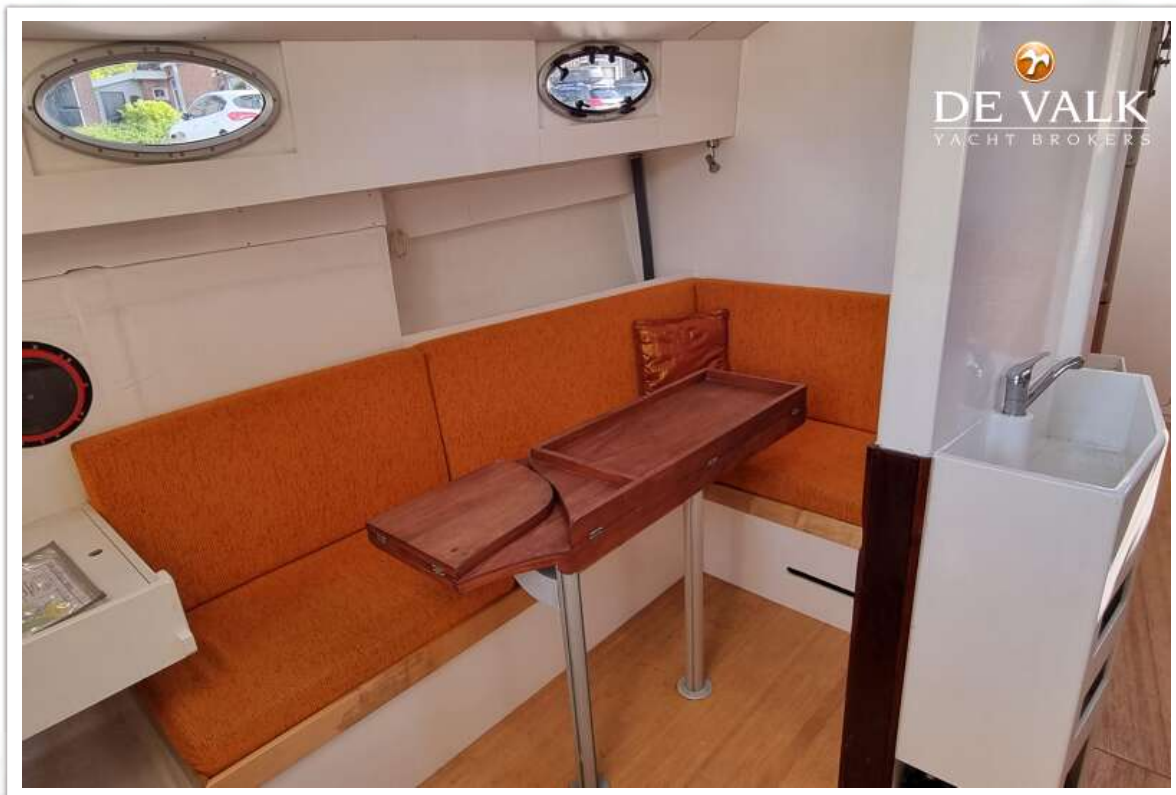
SVALBARD 41 LIFT KEEL



SVALBARD 41 LIFT KEEL



SVALBARD 41 LIFT KEEL



SVALBARD 41 LIFT KEEL



SVALBARD 41 LIFT KEEL



SVALBARD 41 LIFT KEEL



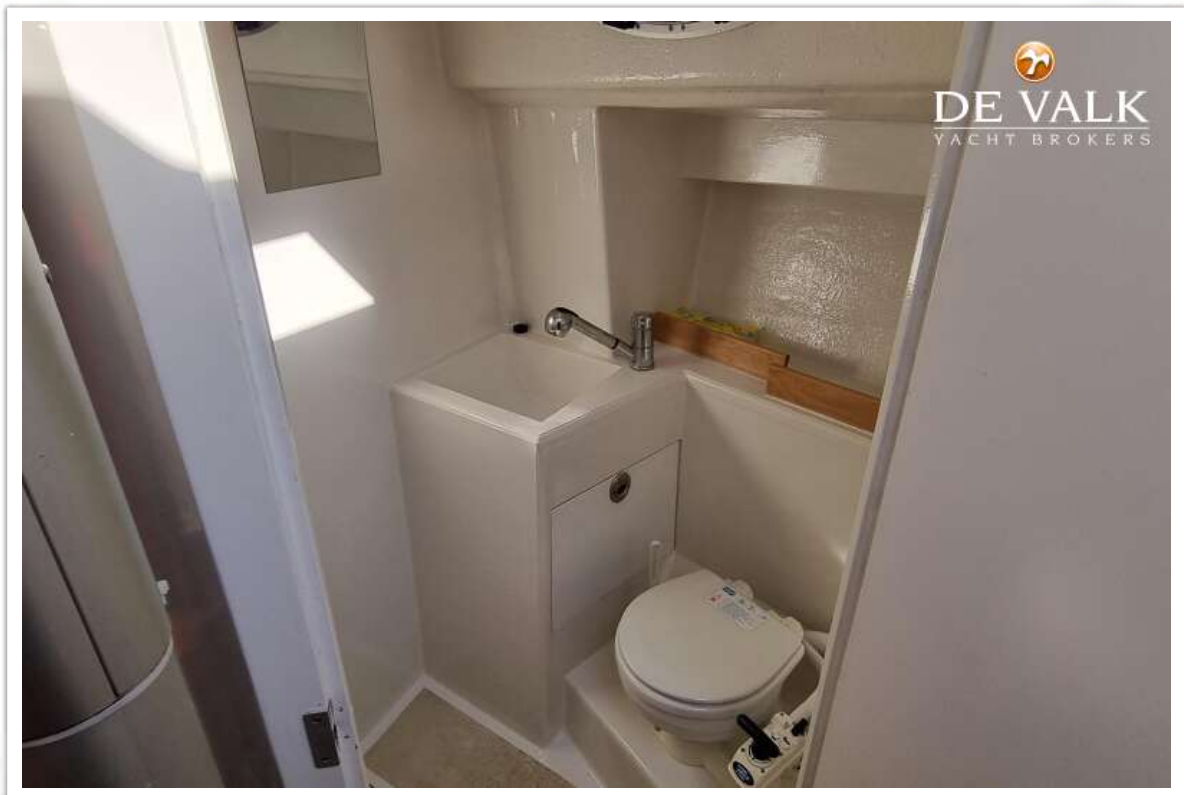
SVALBARD 41 LIFT KEEL



SVALBARD 41 LIFT KEEL



SVALBARD 41 LIFT KEEL



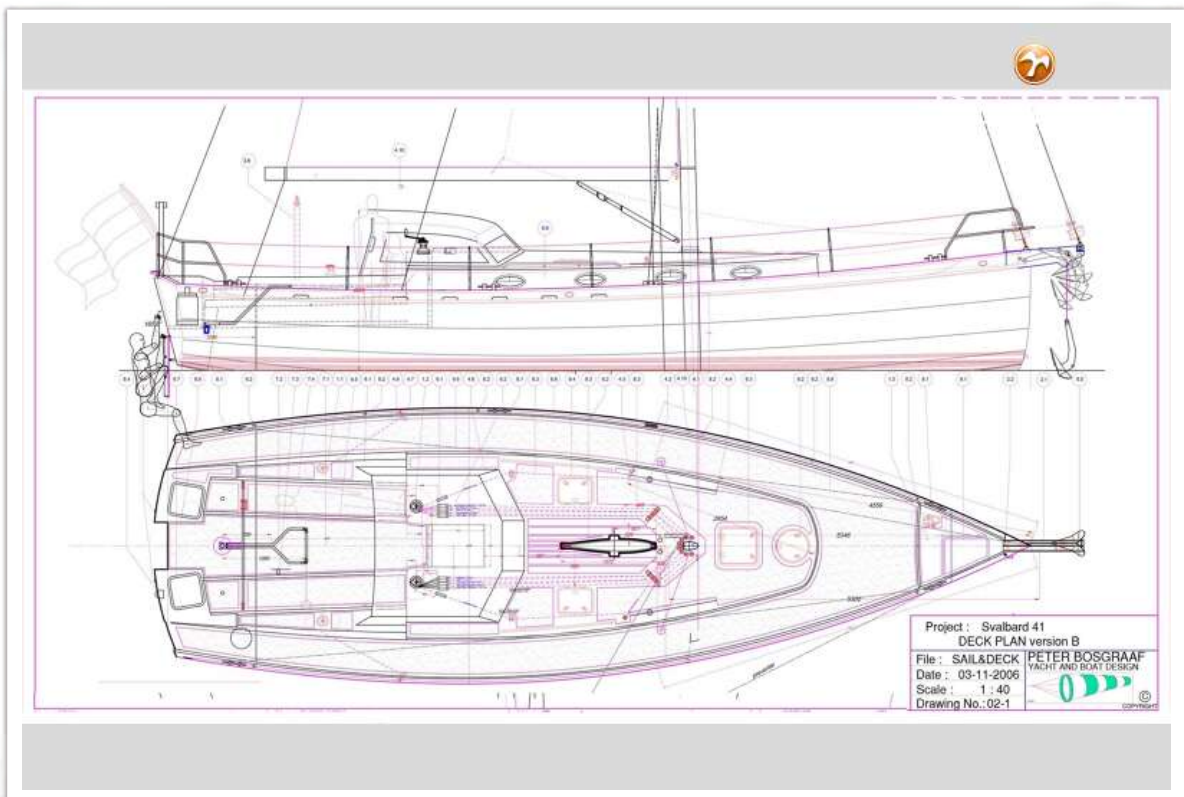
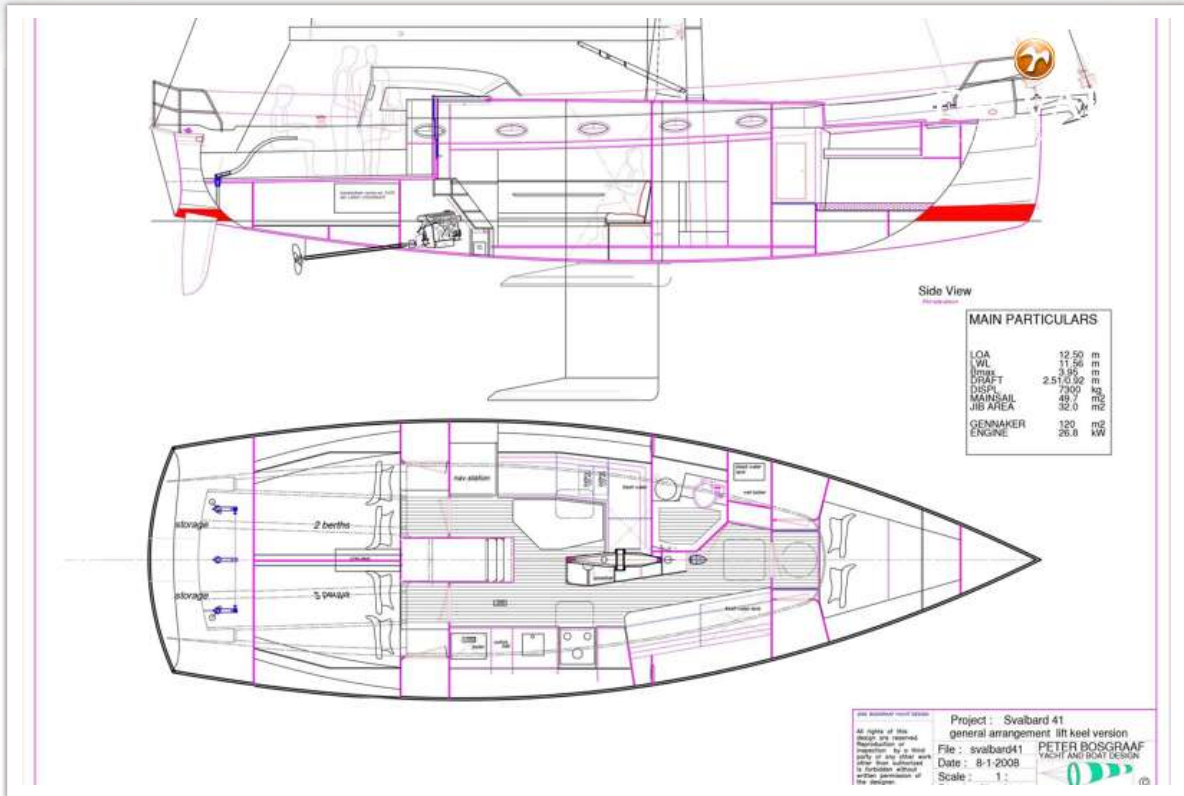
SVALBARD 41 LIFT KEEL



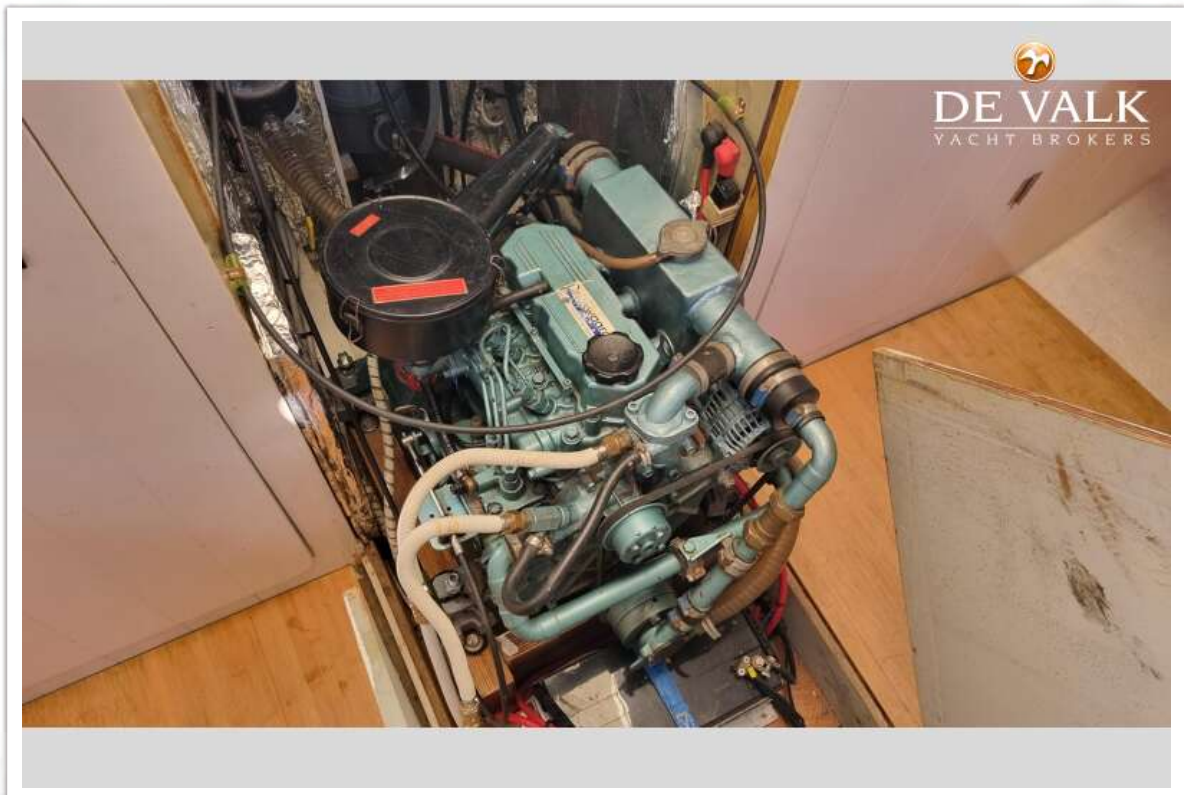
SVALBARD 41 LIFT KEEL



SVALBARD 41 LIFT KEEL



SVALBARD 41 LIFT KEEL



SVALBARD 41 LIFT KEEL

