



DE VALK
YACHT BROKERS



BENETEAU OCEANIS 40



DE VALK
YACHT BROKERS

BENETEAU OCEANIS 40

BROKER'S COMMENTS

We offer you this very well maintained Beneteau Oceanis 40 named `Par Two`. Her large saloon offers great comfort and ideal for a longer stay on board. She has a large owner's cabin with a spacious double bed with ensuite bathroom. With her double after cabin and extra bathroom she is ideal to be on board with a family and friends. Equipped with new Raymarine navigation equipment she will guide you where ever you want! This Beneteau Oceanis 40 is a perfect family cruiser with all the comfort you need. She is moored in our sales marina and can be seen 7 days a week.

Reinier van der Wolf

SPECIFICATIONS

Dimensions	12.15 x 3.91 x 1.95 (m)	Builder	Beneteau, Saint Helair de Riez
Built	2008	Cabins	3
Material	GRP	Berths	6
Engine(s)	1 x Yanmar 3JH4E diesel	Hp/Kw	40.00 (hp), 29.44 (kw)
Asking price	sold (VAT)	Lying	at sales office

CONTACT

Sales office	De Valk Monnickendam B.V.	Telephone	+31 (0)299 65 63 50
Address	Hoogedijk 6 1145 PM Katwoude NL	E-mail	monnickendam@devalk.nl

DISCLAIMER

These particulars are given in good faith as supplied but cannot be guaranteed.



GENERAL

Model	BENETEAU OCEANIS 40
Type	sailing yacht
LOA (m)	12,15
Beam (m)	3,91
Draft (m)	1,95
Air draft (m)	17,35
Year built	2008
Builder	Beneteau, Saint Helair de Riez
Country	France
Designer	Berret Racoupeau / Nauta Design
Displacement (t)	8,26
CE norm	A
Hull material	GRP
Hull colour	blue
Hull shape	round-bilged
Keel type	bulb keel
Superstructure material	GRP
Deck material	GRP
Deck finish	non-skid moulded in
Superstructure deck finish	non-skid moulded in
Cockpit deck finish	teak
Window frame	polymer
Window material	polycarbonate
Deckhatch	4x Lewmar
Fuel tank (litre)	polyethylene - 200
Level indicator (fuel tank)	yes
Freshwater tank (litre)	polyethylene - 1x 160 + 1x 200
Level indicator (freshwater)	yes
Blackwater tank (litre)	polyethylene - 1x 50 + 1x 80
Level indicator (blackwater)	yes



Blackwater tank extraction	deck extraction
Wheel steering	mechanical - Double
Emergency tiller	yes

ACCOMMODATION

Cabins	3
Berths	6
Interior	cherry
Floor	wood
Saloon	yes
Headroom saloon (m)	2,00
Heating	diesel ducted hot air - Webasto
Chart table	yes
Aft Cabin	2x
Dinette	yes
Galley	yes
Countertop	plastic
Sink	stainless steel - Double
Cooker	calor gas - ENO, two burner
Oven	ENO
Gas alarm	CO monoxide Carbon Monoxide Alarm
Fridge	180 L Vitrofrigo with freezer compartment. Fridge evaporator and compressor replaced in 2019
Hot water system	220V + engine - Boiler
Water pressure system	electrical
Manual and/or foot pump	yes
Owners cabin	double bed
Bed length (m)	2,00
Wardrobe	hanging and shelves
Bathroom	en suite
Toilet	en suite



Toilet system	manual - Jabsco
Wash basin	in the bathroom
Shower	en suite
Guest cabin 1	double bed
Bed length (m)	2,00
Wardrobe	hanging and shelves
Bathroom	en suite
Toilet	en suite
Toilet system	manual - Jabsco
Wash basin	in the bathroom
Shower	en suite
Guest cabin 2	double bed
Bed length (m)	2,00
Wardrobe	hanging and shelves
Bathroom	shared
Toilet	shared
Toilet system	manual - Jabsco
Wash basin	in the bathroom
Shower	shared

MACHINERY

No of engines	1
Make	Yanmar
Type	3JH4E
HP	40
kW	29.44
Fuel	diesel
Year installed	2008
Engine hours	Gauge broken
Engine cooling system	freshwater heat exchanger
Drive	shaft



Engine controls	mechanical - FX
Gearbox	yes
Bowthruster	electric - MaxPower SP100
Gearbox	hydraulic
Exhaust	watercooled
Propeller type	fixed
Propeller blades	3 bladed
Propeller shaft material	stainless steel
Shaft lubrication	water
Manual bilge pump	Plastimo
Electric bilge pump	yes
Electrical installation	12V 220
Start battery	1x
Service battery	2 x new 2021
Bowthruster battery	1x
Windlass battery	1x
Battery charger	12V 40A, Cristec
Shorepower	with cable
Extra info	engine service: filters, oil etc 2023.

NAVIGATION

Compass	2x Plastimo Olympic 135
Depth sounder/log	Raymarine i70s (2022)
Windset	Raymarine
VHF	Raymarine with additional handset for outside (from 2016)
VHF handheld	yes
Autopilot	Raymarine EV-100 autopilot
Radar	Raymarine Quantum Q24D new 2022 (not connected)
GPS	Raymarine Raystar 150 GPS new 2022
Plotter	Raymarine Actiom Pro 9S Hybrid touch new 2021
AIS transponder	Easy TRX new 2016



Navigation lights

yes

EQUIPMENT

Sprayhood

yes

Winter cover

yes

Cockpit table

+ pull out shaded lamp

Cockpit chairs

4x

Bathing platform

yes

Boarding ladder

stainless steel

Deck shower

yes

Anchor

Talamex

Anchor chain

yes

Windlass

electrical - Quick

Sea railing

wire

Grab rail (superstructure)

teak

Railing side opening gates

Both Sides

Pushpit

yes

Pulpit

yes

Life raft

container

Life raft (pers)

container - 4x

Last life raft survey

2/2023

Fenders

yes

Mooring lines

yes

Radio-cd player

VDO Dayton

Cockpit speakers

yes

Speakers in salon

VDO

Clock - barometer

Only barometer

Fire extinguisher

yes

RIGGING

Rigging

sloop



BENETEAU OCEANIS 40

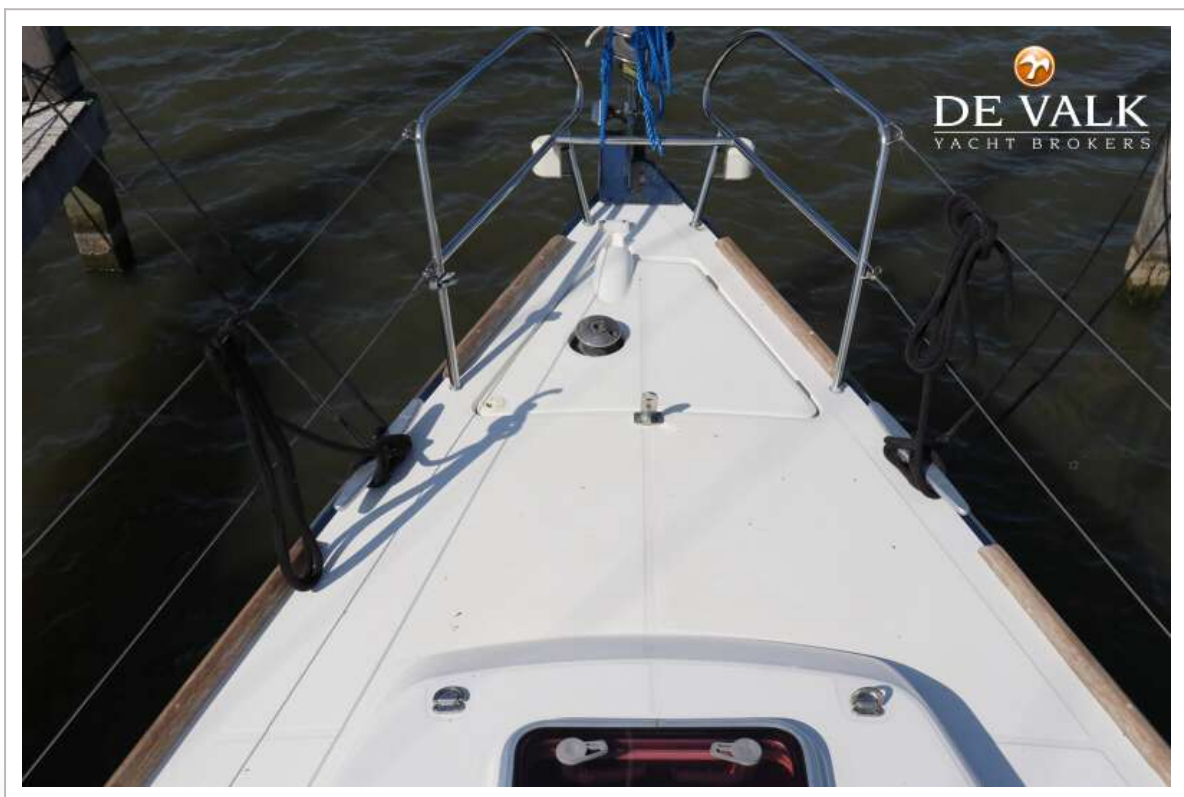
Standing rigging	wire
Material mast	aluminium
Spreaders	2x
Fully battened mainsail	Quantum 39m2 (2019)
Stoway mast	yes
Genoa	39m2 (2019)
Boomvang	mechanical and tackle
Genoa sheetwinches	2x Harken 46.2
Halyard winches	yes
Multifunctional winches	halyard/sheet winches - 2x Harken two speed 40, 1x electric



BENETEAU OCEANIS 40



BENETEAU OCEANIS 40



BENETEAU OCEANIS 40



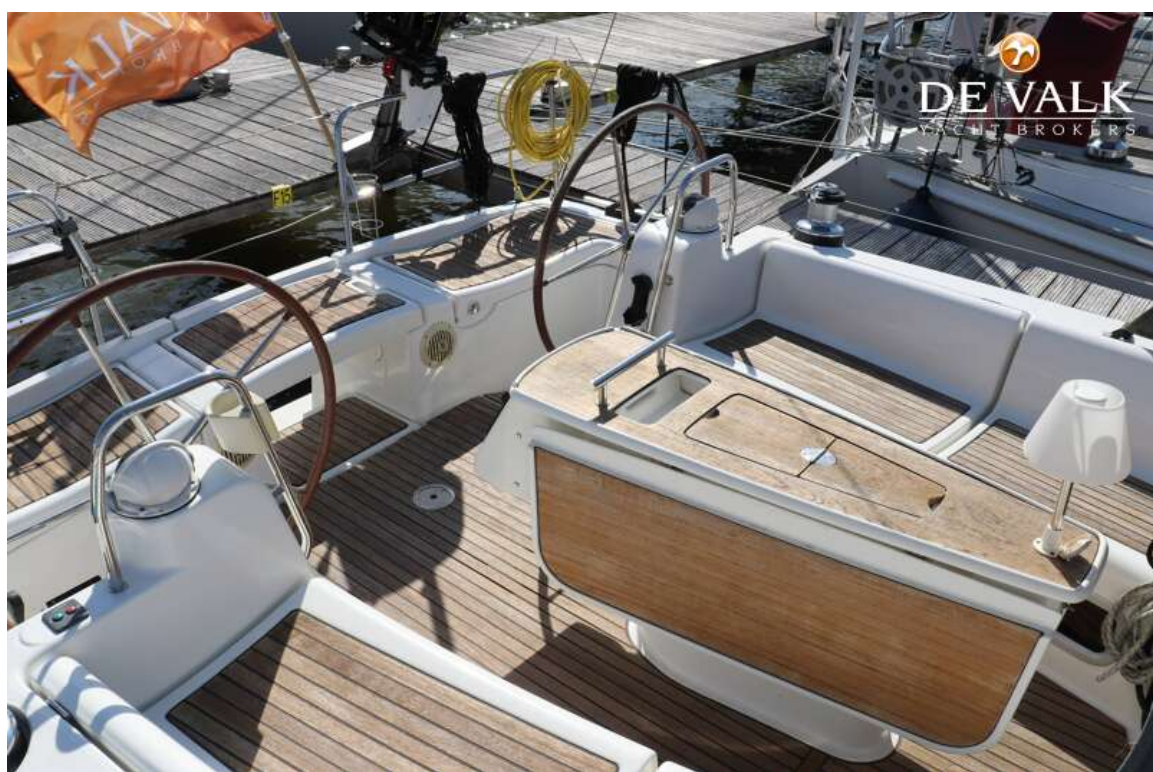
BENETEAU OCEANIS 40



BENETEAU OCEANIS 40



BENETEAU OCEANIS 40



BENETEAU OCEANIS 40



BENETEAU OCEANIS 40



BENETEAU OCEANIS 40



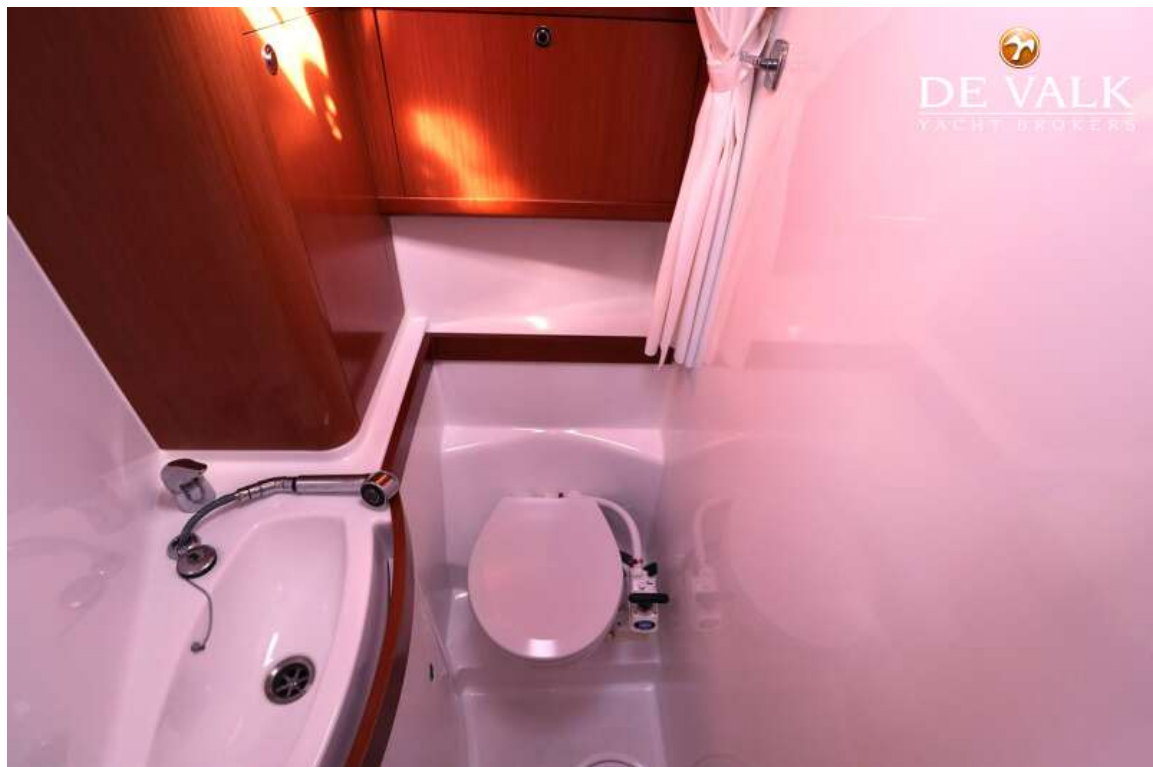
BENETEAU OCEANIS 40



BENETEAU OCEANIS 40



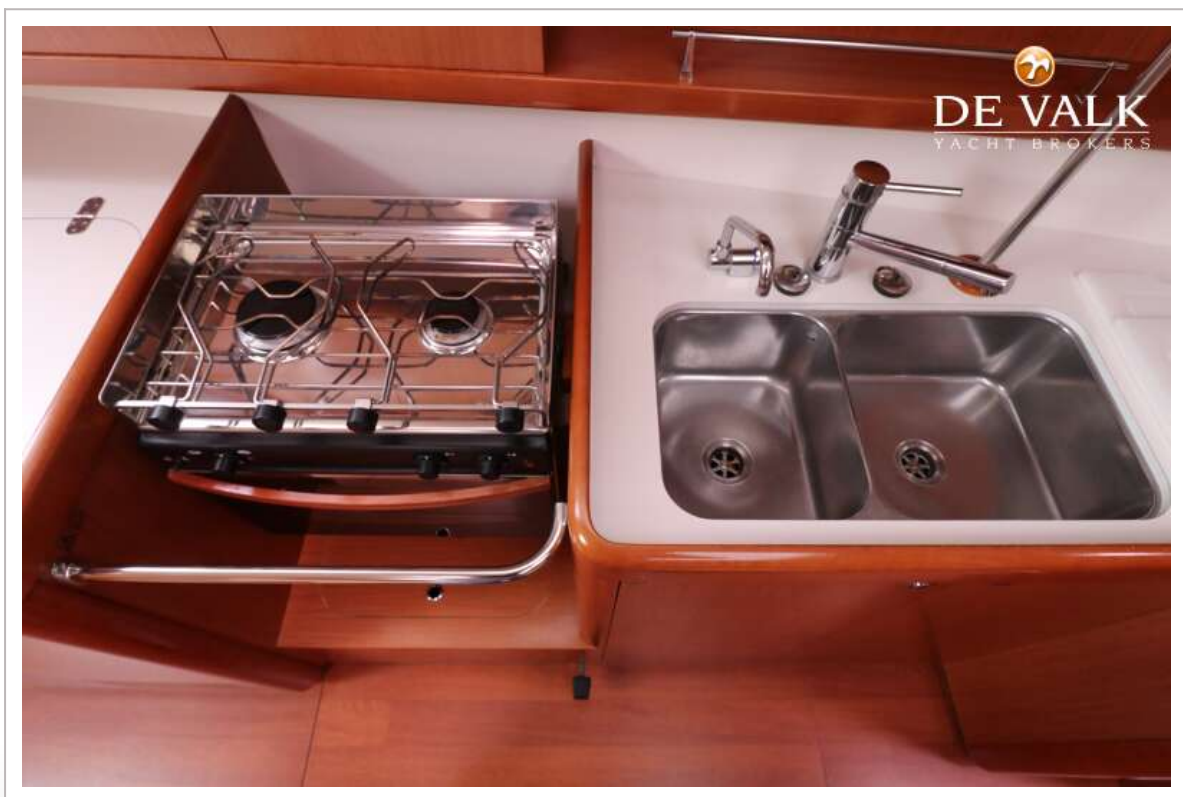
BENETEAU OCEANIS 40



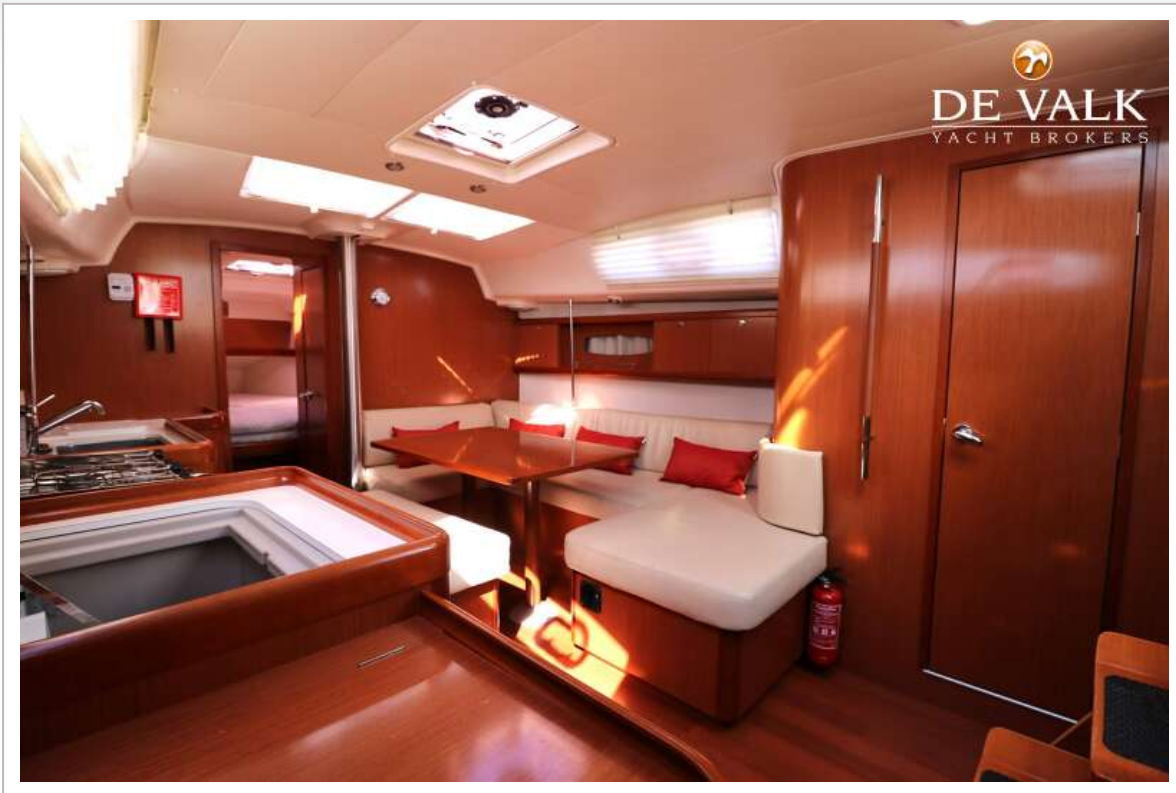
BENETEAU OCEANIS 40



BENETEAU OCEANIS 40



BENETEAU OCEANIS 40



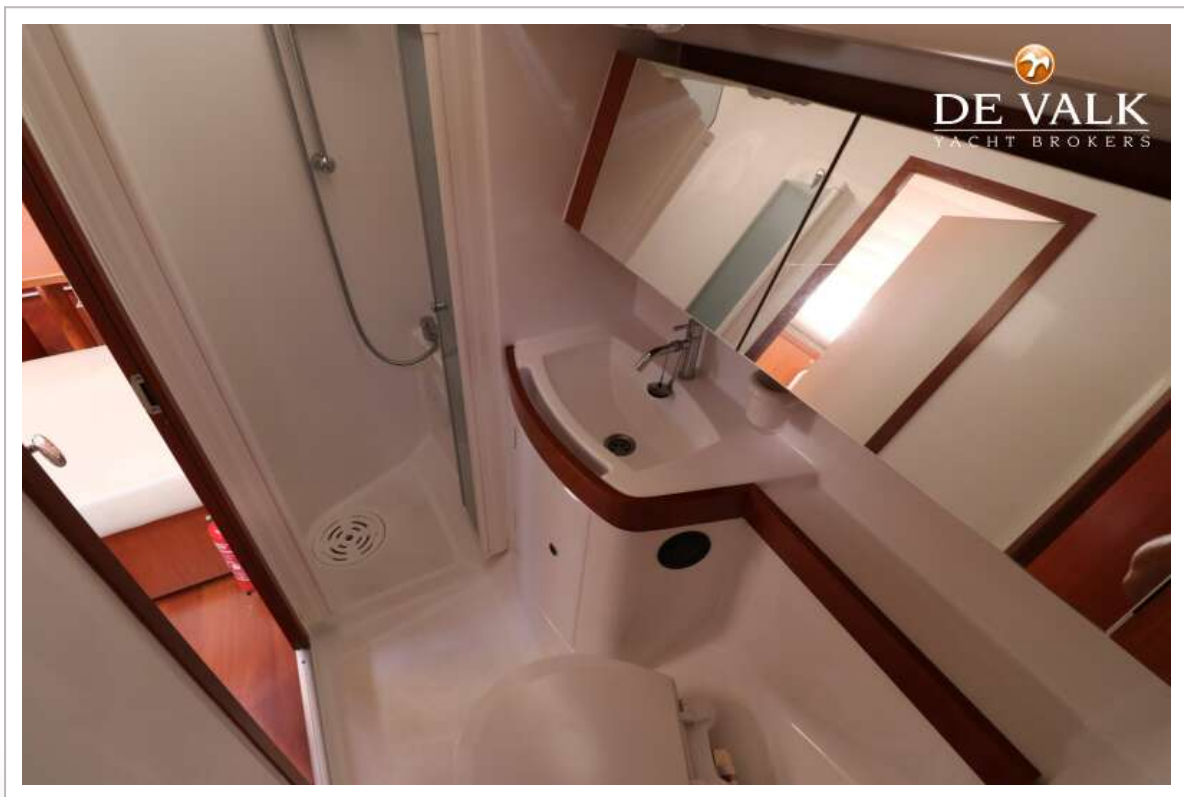
BENETEAU OCEANIS 40



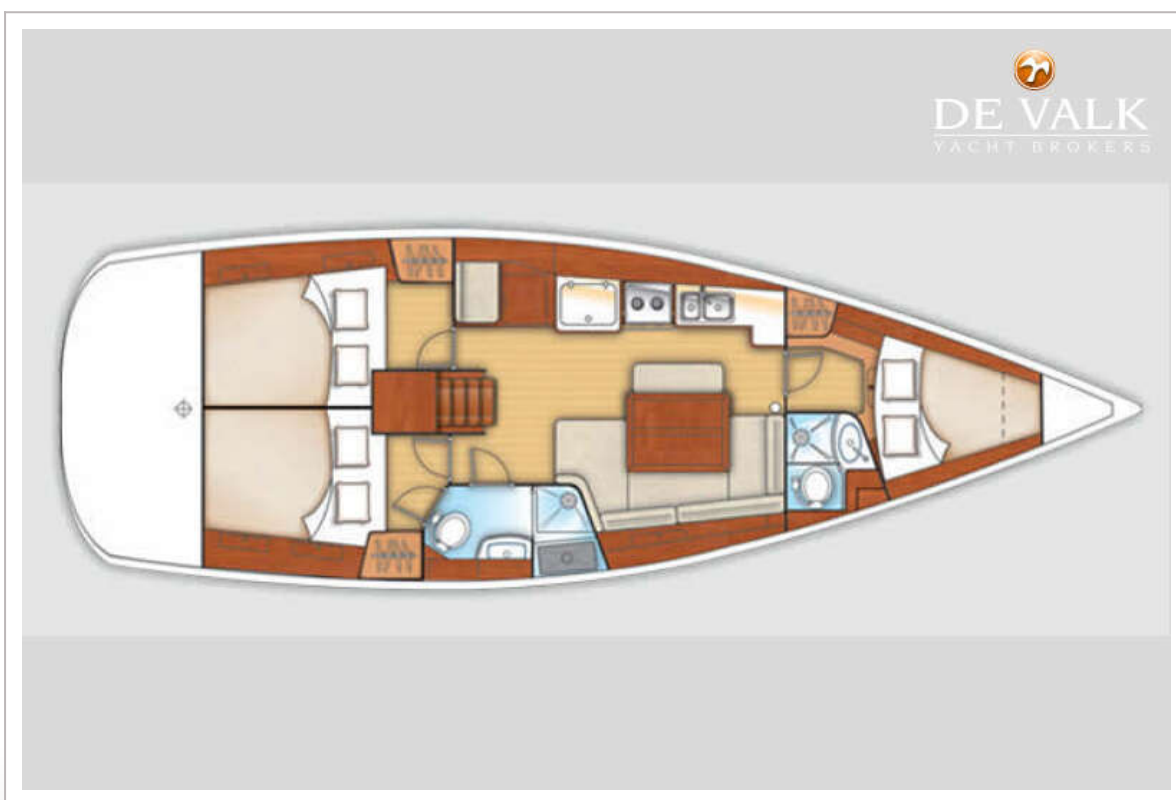
BENETEAU OCEANIS 40



BENETEAU OCEANIS 40



BENETEAU OCEANIS 40



BENETEAU OCEANIS 40

