



DE VALK
YACHT BROKERS



DE RUITER KOTTER 1350 AK



DE VALK
YACHT BROKERS

DE RUITER KOTTER 1350 AK

BROKER'S COMMENTS

The Ruiter Kotter is a boat built for comfort and space. She has an incredibly beautiful bow which immediately draws the attention. The back of the ship is equipped with stainless davids, to transport the dinghy properly during your trip. On the deck you will find a large window which brings light into the saloon, this brings a spacious feeling in the boat. The boat is equipped with both inside and outside steering, giving you a good overview.

Bas Lohmann

SPECIFICATIONS

Dimensions	13.50 x 4.50 x 1.40 (m)	Builder	De Ruiter
Built	1980	Cabins	
Material	Steel	Berths	
Engine(s)	2 x Ford Lehman diesel	Hp/Kw	2 x 120.00 (hp), 88.32 (kw)
Asking price	sold (VAT)	Lying	at sales office

CONTACT

Sales office	De Valk Loosdrecht B.V.	Telephone	+31 (0)35 582 90 30
Address	't Breukeleveense Meentje 6 1231LM Loosdrecht / Wijdmeren NL	E-mail	loosdrecht@devalk.nl

DISCLAIMER

These particulars are given in good faith as supplied but cannot be guaranteed.



GENERAL

Model	DE RUITER KOTTER 1350 AK
Type	motor yacht
LOA (m)	13,50
Beam (m)	4,50
Draft (m)	1,40
Year built	1980
Launched	1980
Builder	De Ruiter
Country	The Netherlands
Designer	A. Volker
Displacement (t)	22
Hull material	steel
Hull colour	blue
Hull shape	multi hard chine
Keel type	box keel
Superstructure material	steel
Rubbing strake	stainless steel
Deck material	steel
Deck finish	non-skid paint
Cockpit deck finish	non-skid paint
Antifouling (year)	2020
Window frame	aluminium
Window material	glass
Portholes	aluminium 12x
Insulation	rockwool
Flybridge cover	2018
Mast can be lowered	electric
Steadying sail with mast	yes
Fuel tank (litre)	steel 1200
Level indicator (fuel tank)	yes



Freshwater tank (litre)	stainless steel 2x 500 L
Level indicator (freshwater)	yes
Blackwater tank (litre)	stainless steel 150L
Level indicator (blackwater)	yes
Blackwater tank extraction	deck extraction + pump
Greywater tank (litre)	Into blackwater
Wheel steering	hydraulic
Inside helm position	yes
Outside helm position	yes

ACCOMMODATION

Interior	teak
Floor	teak and holly
Aft deck	yes
Saloon	yes
Heating	diesel ducted hot air Webasto
Aft Cabin	yes
Dinette	yes
Dinette to convert into berth	yes
Opening door to aft deck	yes
Galley	yes
Countertop	wood
Sink	stainless steel
Cooker	calor gas 4 burners
Gas alarm	Gas detector Bep Marine - Matrix
Microwave/oven combi	Silvercrest
Fridge	Isotherm
Hot water system	220V + engine
Water pressure system	electrical 2021
Owners cabin	twin single
Bed length (m)	2,00 meter



DE RUITER KOTTER 1350 AK

Wardrobe	hanging and shelves
Bathroom	shared Fully replaced in 2018
Toilet	shared CER Broyeur installed in 2018
Toilet system	electric
Wash basin	in the bathroom
Shower	shared
Guest cabin 1	twin single
Bed length (m)	2,00 meter
Wardrobe	hanging and shelves

MACHINERY

No of engines	2
Make	Ford Lehman
HP	120
kW	88.32
Fuel	diesel
Engine hours	6000
Engine cooling system	freshwater heat exchanger Both renewed in 2022
Drive	shaft
Engine controls	bowden cable
Gearbox	hydraulic
Bowthruster	electric Sidepower 120 KGF - Diameter 2200mm - 24V new 2020
Thrust bearing	yes
Propeller type	fixed
Propeller blades	4
Propeller shaft material	stainless steel
Shaft lubrication	water
Manual bilge pump	yes
Electric bilge pump	2x
Electrical installation	12 & 24 V DC + 220V AC



Batteries	3x 140 Ah
Start battery	yes
Service battery	yes
Bowthruster battery	yes
Battery monitor	Victron Energy BMV-600S
Battery charger	Victron Phoenix 24V / 2000VA
Inverter	Victron Energy Blue Power

NAVIGATION

Compass on flybridge	yes
Electric compass	yes
Depth sounder	Raymarine
VHF	2x in- & outside
Autopilot	yes
Rudder angle indicator	yes
Radar/plotter	Raymarine C120
Navigation lights	yes
Searchlight	yes

EQUIPMENT

Sprayhood	yes
Cockpit cover	yes
Cockpit chairs	Integrated in pulpit
Boarding ladder	Alumium
Gangway	Stainless steel
Anchor	Fortress Stainless steel
Anchor chain	Stainless steel
Windlass	electrical Vetus
Deck wash	Both fresh and sea water
Davits	stainless steel
Davits controls	manual



DE RUITER KOTTER 1350 AK

Sea railing	stainless steel Mirror 8 polished heavy oval profile new 2018
Grab rail (superstructure)	stainless steel
Railing side opening gates	yes
Wiper	4x
Clearview window	yes
Horn	Air pressure
Fenders	yes
Mooring lines	yes
Spare parts	yes
Tools	yes
TV	LG Smart TV 2020
Radio	yes
Radio-cd player	yes
Speakers in salon	Blaupunkt



DE RUITER KOTTER 1350 AK



DE RUITER KOTTER 1350 AK



DE RUITER KOTTER 1350 AK



DE RUITER KOTTER 1350 AK



DE RUITER KOTTER 1350 AK



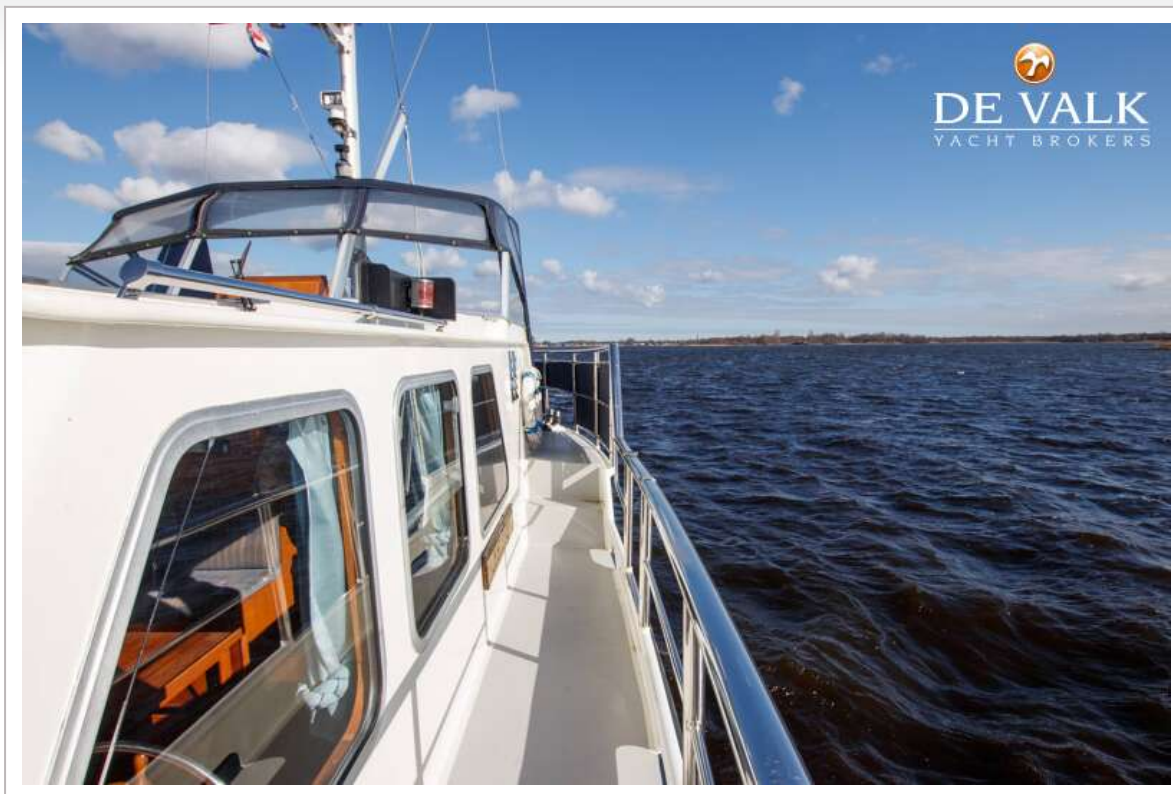
DE RUITER KOTTER 1350 AK



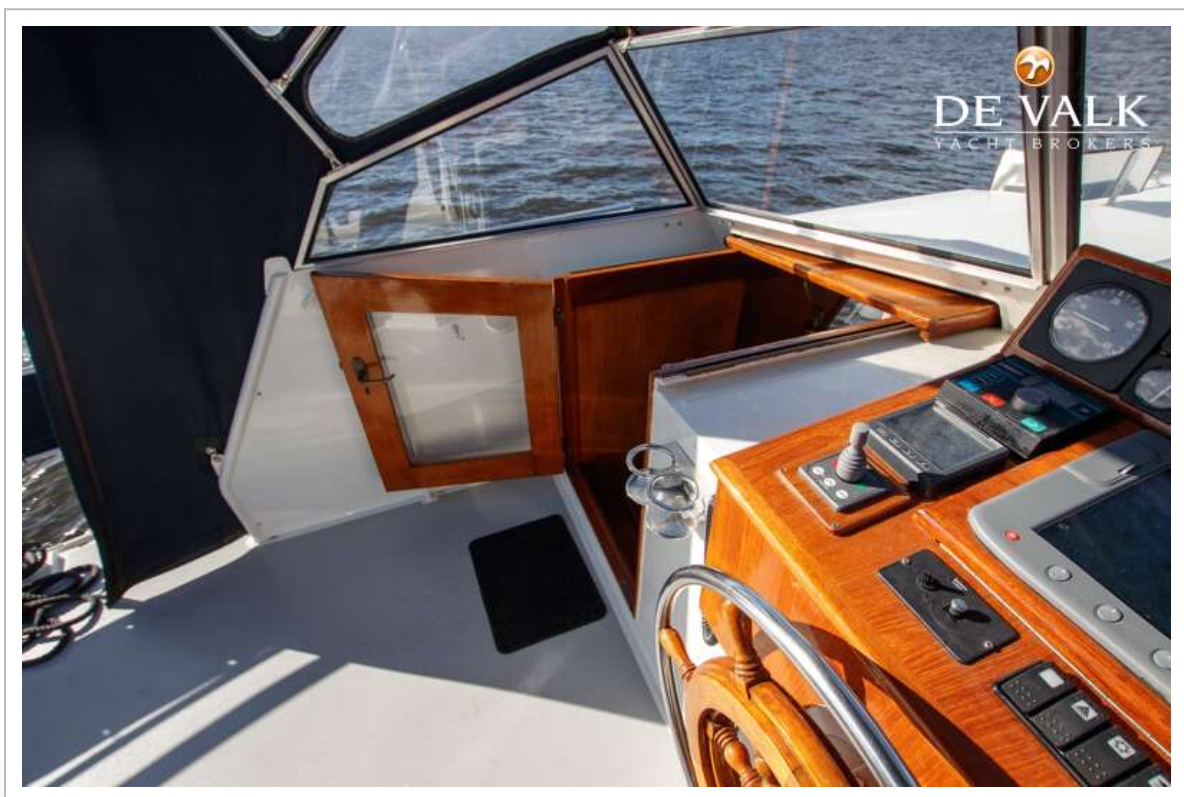
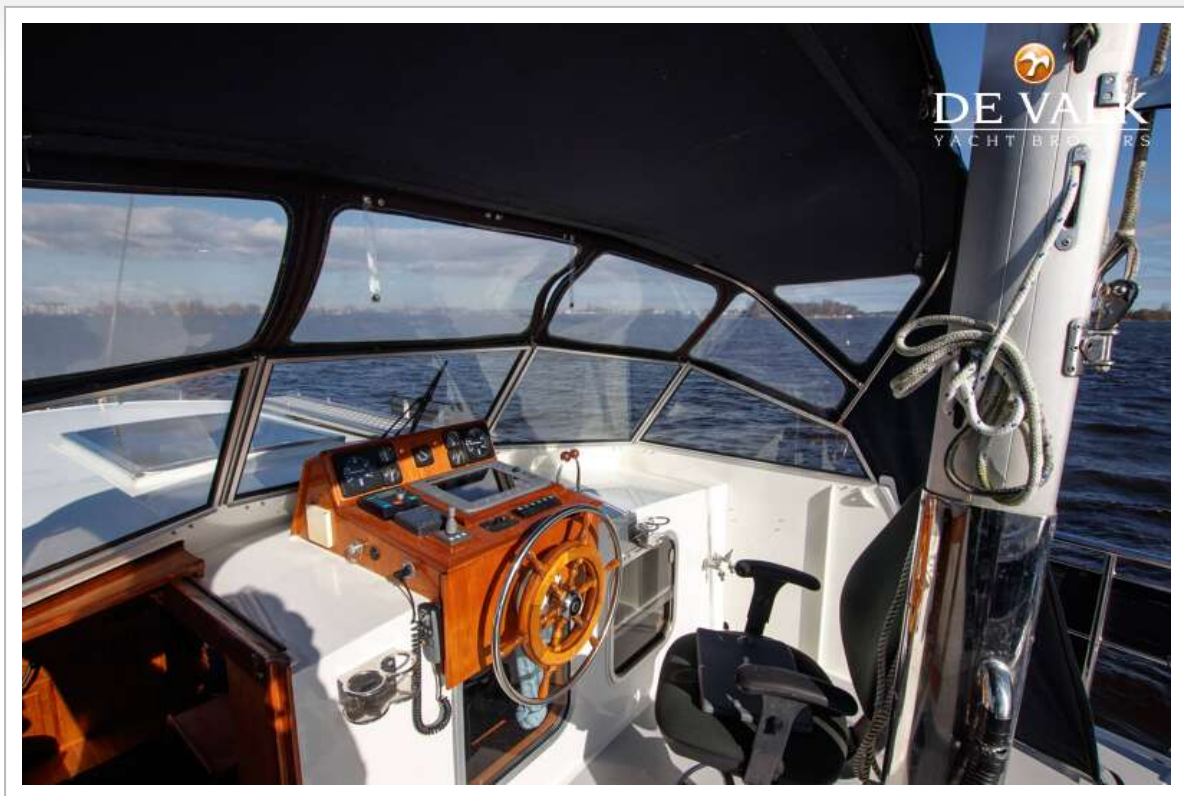
DE RUITER KOTTER 1350 AK



DE RUITER KOTTER 1350 AK



DE RUITER KOTTER 1350 AK



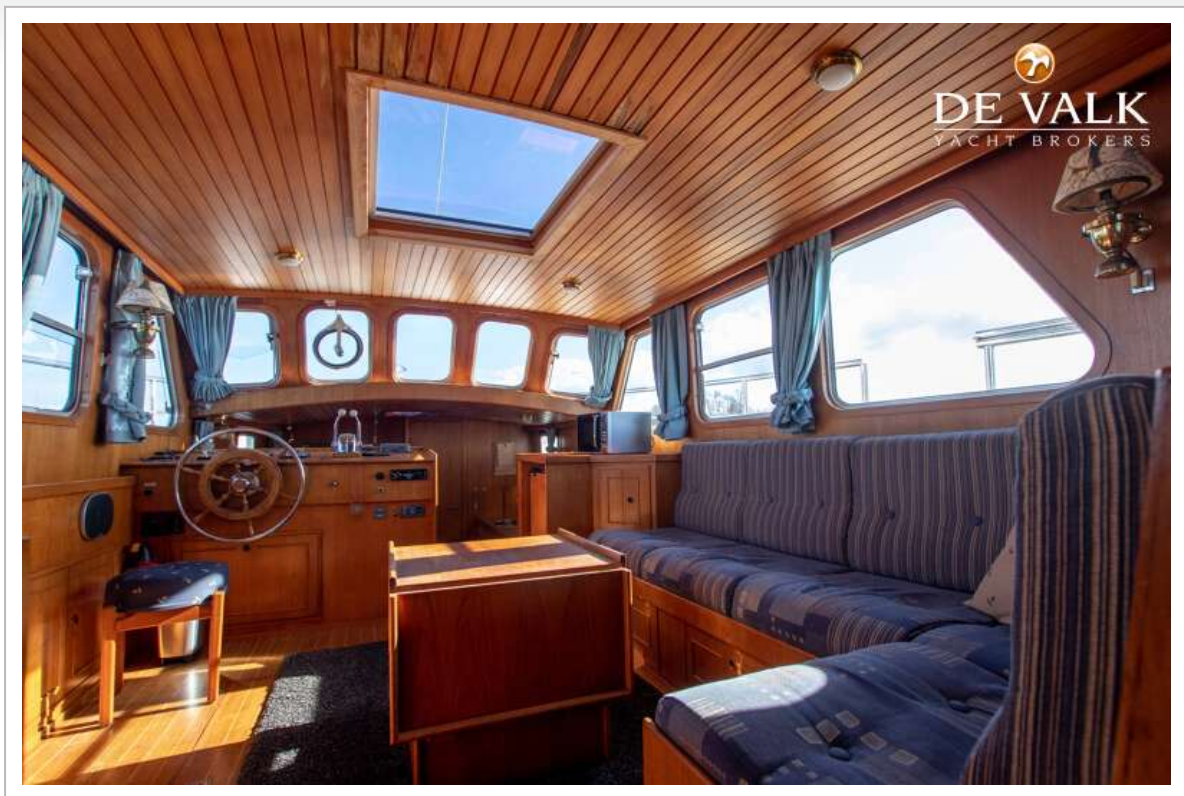
DE RUITER KOTTER 1350 AK



DE RUITER KOTTER 1350 AK



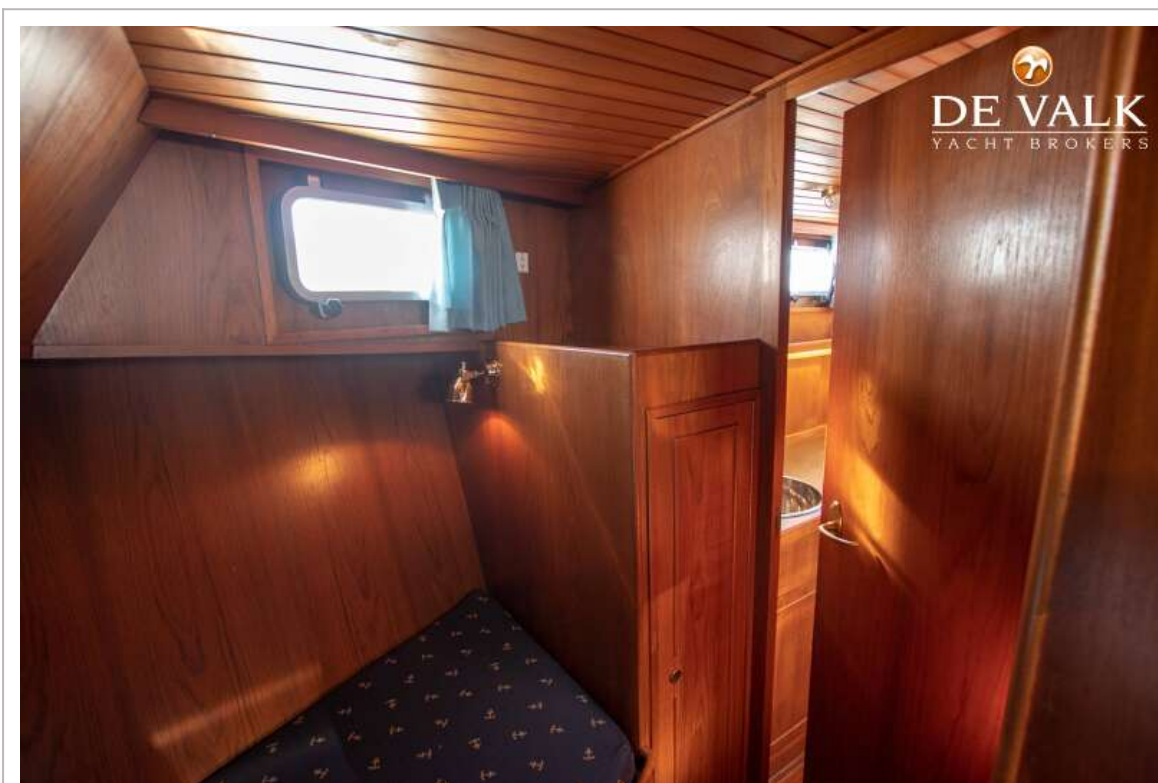
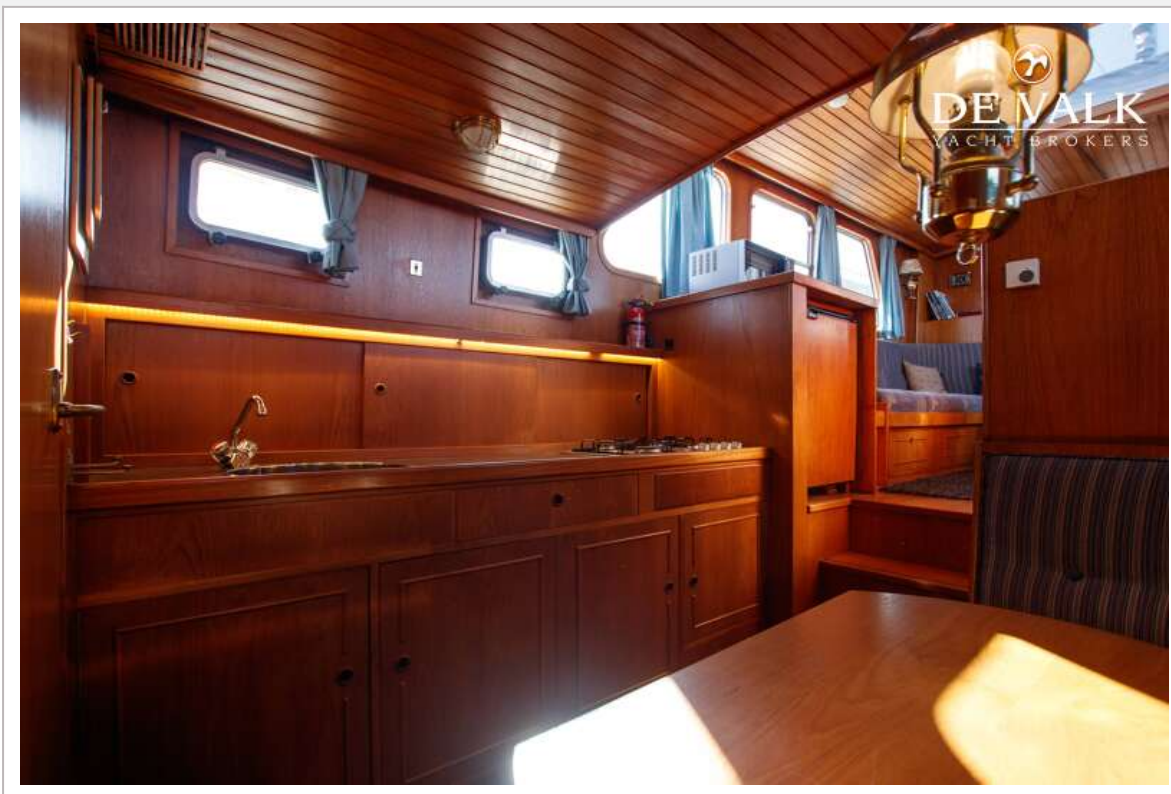
DE RUITER KOTTER 1350 AK



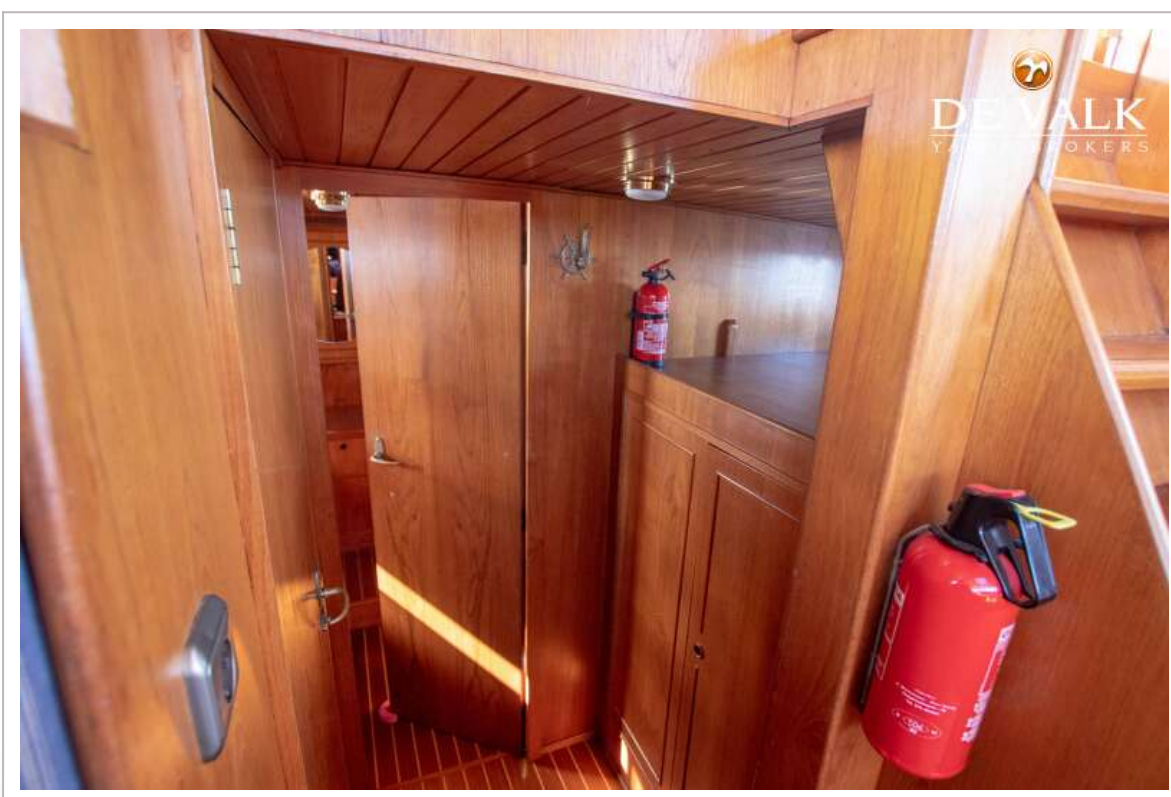
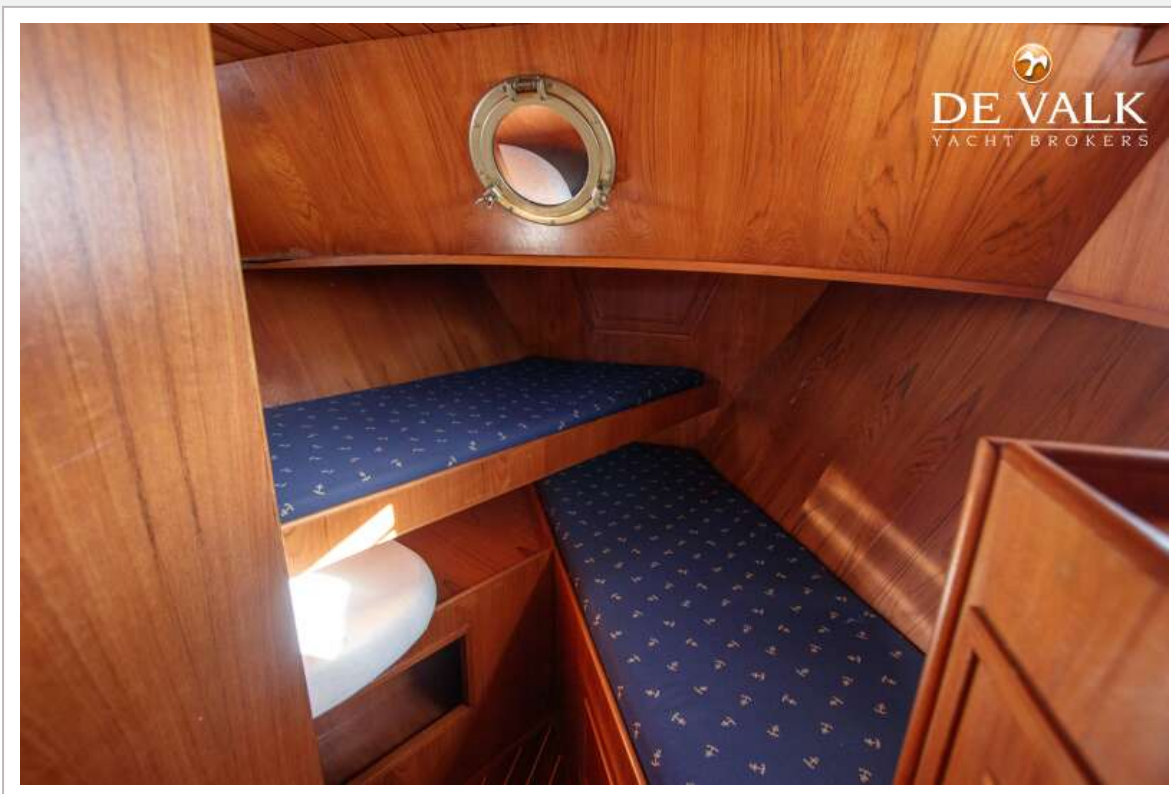
DE RUITER KOTTER 1350 AK



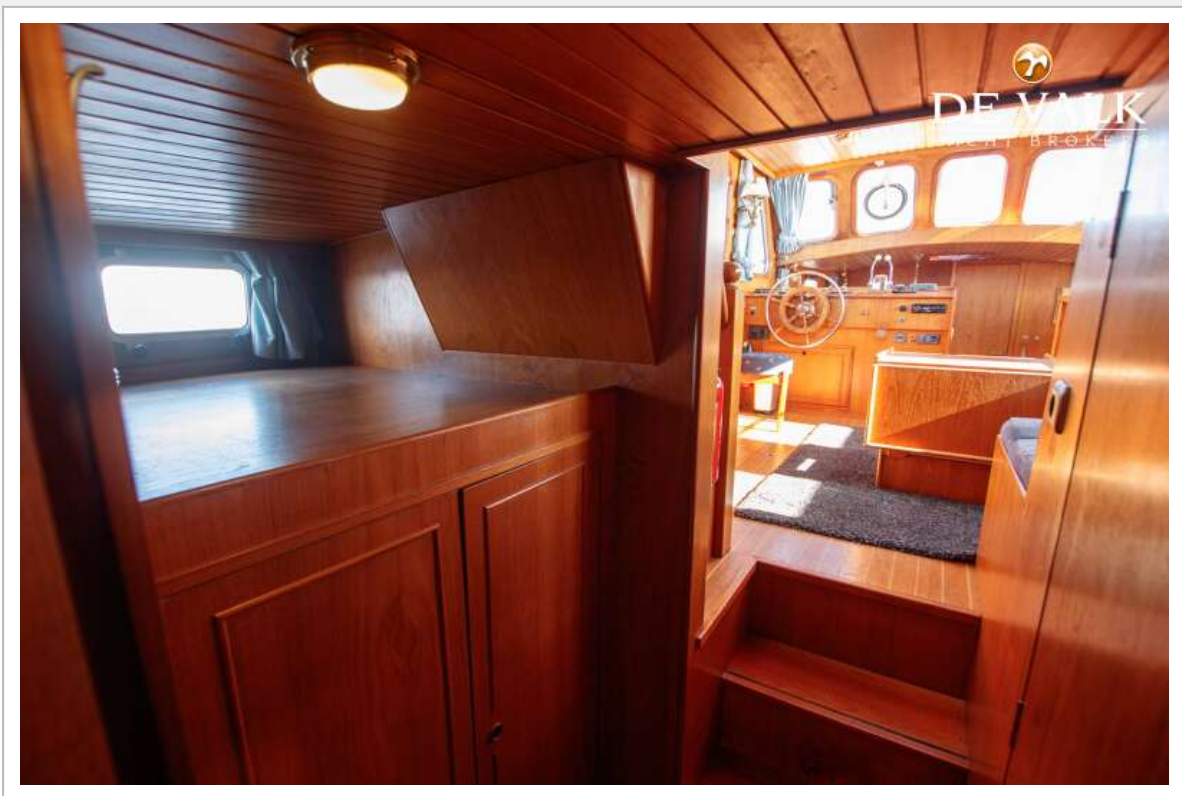
DE RUITER KOTTER 1350 AK



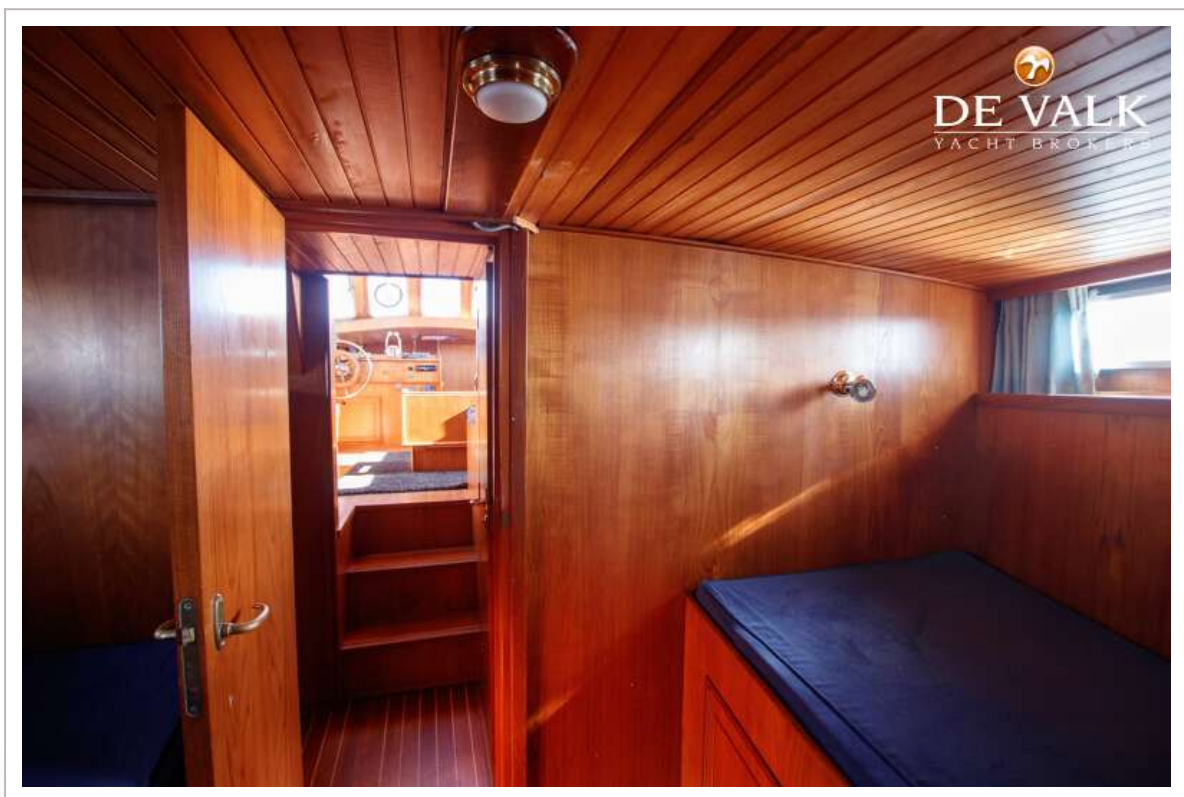
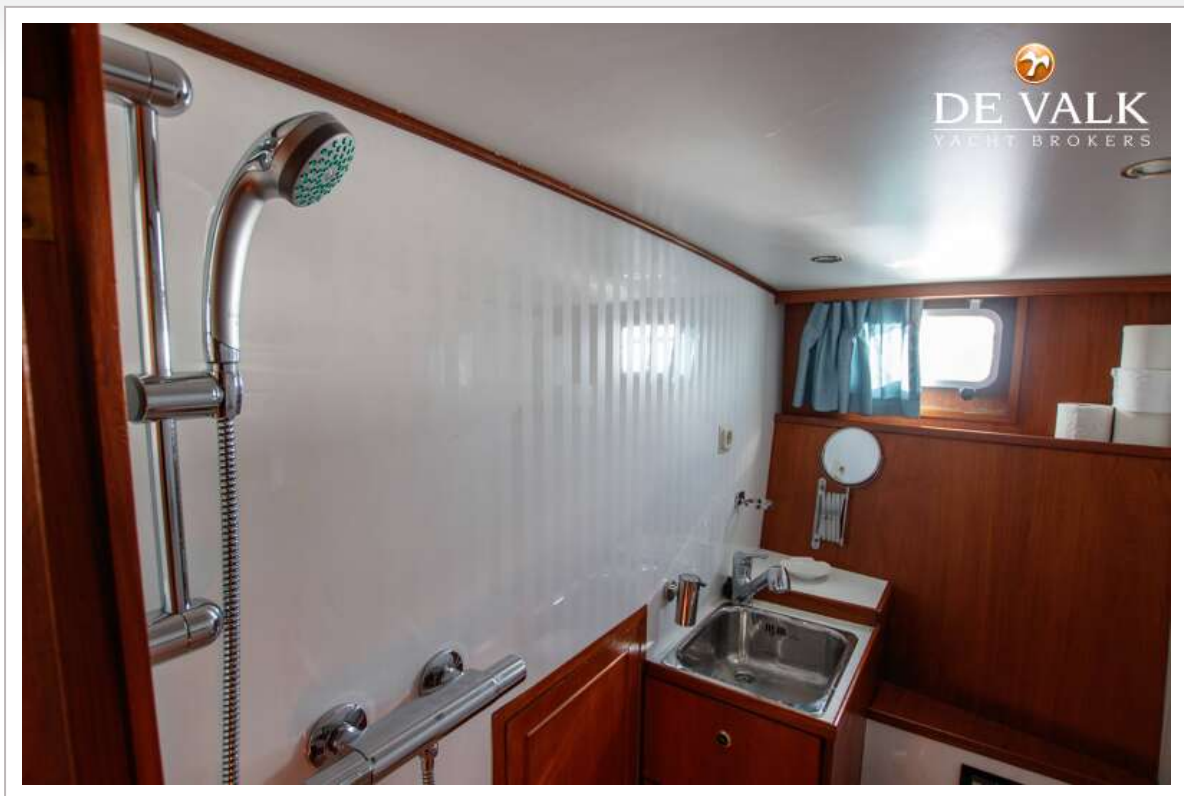
DE RUITER KOTTER 1350 AK



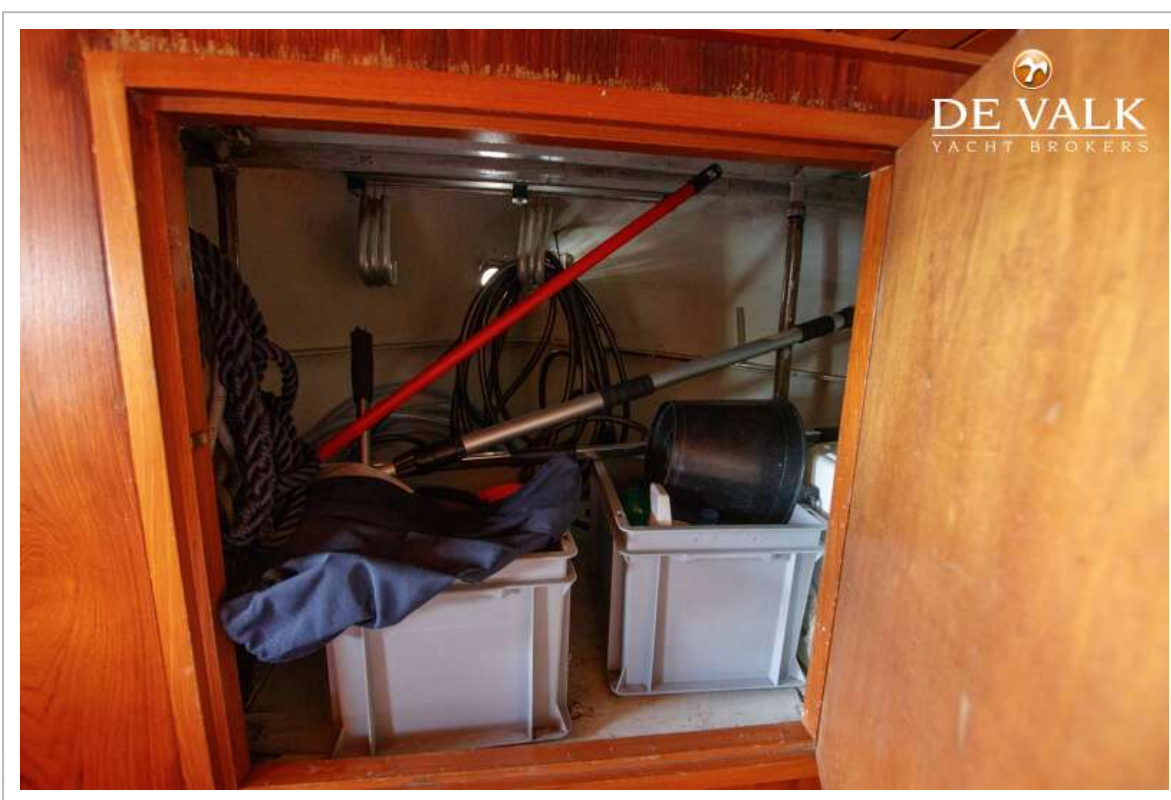
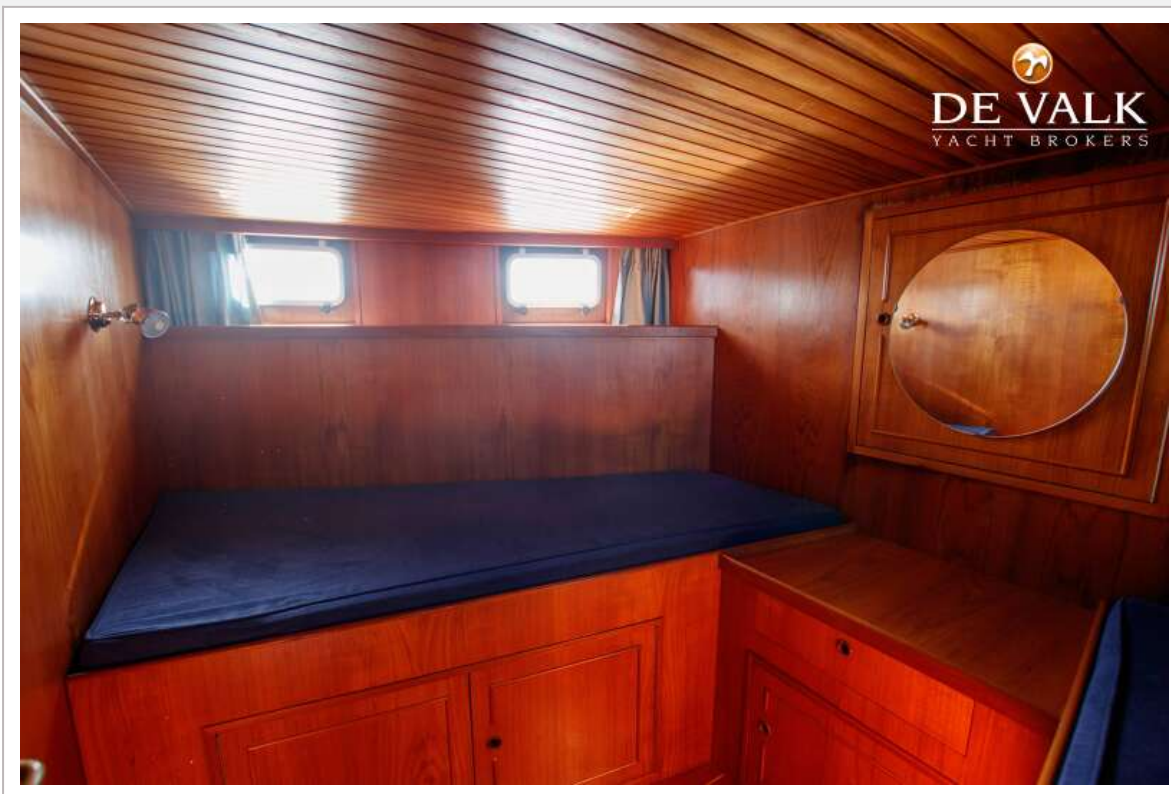
DE RUITER KOTTER 1350 AK



DE RUITER KOTTER 1350 AK



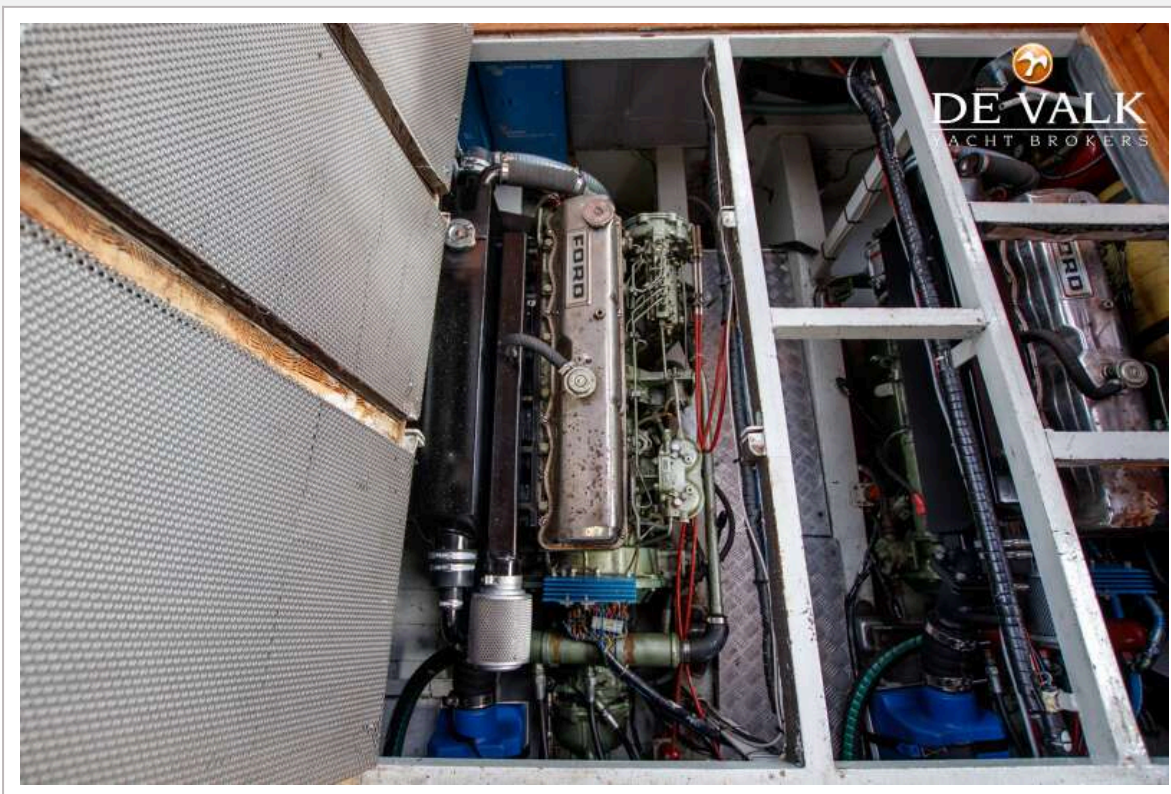
DE RUITER KOTTER 1350 AK



DE RUITER KOTTER 1350 AK



DE RUITER KOTTER 1350 AK



DE RUITER KOTTER 1350 AK

