



ABSOLUTE NAVETTA 58 TRAWLER



ABSOLUTE NAVETTA 58 TRAWLER

BROKER'S COMMENTS

Where most explorer type Trawlers lean on very traditional lines, they can't match the three decks accommodations that the Navetta 58 offers. You will find that once onboard this well appointed yacht, she offers you more than just that. Spending time aboard exploring even far away destinations in great comfort, style and handling the Navetta 58 will be well up to the tasks you present her. She comes fully equipped, heating, stabilizer, joystick a "doddle" to handle in any circumstances. Exclusive to the Northern European market so this is your moment! Export and B-to-B delivery possible.

Marc Weijenberg

SPECIFICATIONS

Dimensions	17.42 x 5.04 x 1.35 (m)	Builder	Absolute S.P.A.
Built	2015	Cabins	3
Material	GRP	Berths	6
Engine(s)	2 x Volvo Penta D6-435/IPS-600 diesel	Hp/Kw	2 x 435.00 (hp), 320.16 (kw)
Asking price	€ 935.000 (VAT Not paid)	Lying	The Netherlands

CONTACT

Sales office	De Valk Thuishaven	Telephone	+31 35 5829042
Address	Peperstraat 7 1411 PX Naarden NL	E-mail	thuishaven@devalk.nl

DISCLAIMER

These particulars are given in good faith as supplied but cannot be guaranteed.



ABSOLUTE NAVETTA 58 TRAWLER

GENERAL

Model	ABSOLUTE NAVETTA 58 TRAWLER
Type	motor yacht
LOA (m)	17,42
Beam (m)	5,04
Draft (m)	1,35
Air draft (m)	7,15
Headroom (m)	1,98
Year built	2015
Builder	Absolute S.P.A.
Country	Italy
Designer	Absolute S.P.A.
Displacement (t)	33
CE norm	B
Hull material	GRP
Hull colour	white
Hull shape	Fast Displacement Hull
Superstructure material	GRP
Deck material	GRP
Deck finish	teak
Cockpit deck finish	teak
Antifouling (year)	2024
Window material	tempered glass Tinted
Deckhatch	yes
Portholes	yes
Flybridge	With ample seating, sundeck and flip-up comfort seats.
Flybridge cover	Fixed cover with electric bimini-extension over aft part of the flybridge
Radar arch	non collapsible
Fuel tank (litre)	stainless steel 2 x 1200
Level indicator (fuel tank)	yes
Freshwater tank (litre)	stainless steel 600



ABSOLUTE NAVETTA 58 TRAWLER

Level indicator (freshwater)	yes
Blackwater tank (litre)	polyethylene 151 + 40
Blackwater tank extraction	deck extraction + pump
Inside helm position	hydraulic
Flybridge helm position	hydraulic
Extra info	On deck you will find the covered side decks, high bulwarks and gunwales for extra safety and comfort.
Extra info	True to her design, the bow section houses a designated lounge/cockpit area with ample seating, sun bathing and entertainment.
Extra info	Upon introduction the Navetta 58 won the prestigious Motor Boat Awards 2015 in the Trawler Yacht & Aft Cabin section and was nominated EU Powerboat of the Year and Vela e Motore 2015. The Navetta 58 can easily compete with brands like Selene, Outer Reef, Nordhavn, Apremare, Cranchi, Galeon, Greeline and other contemporary Trawlers.

ACCOMMODATION

Cabins	3
Berths	6
Interior	yes
Layout	King sized, full beam owner cabin, vip guest cabin, twin bed guest cabin, three bathrooms and crew accommodations.
Floor	wood
Open cockpit	with 2-section sliding glas-door
Pilot house	with "glas-cockpit" like steering console and pilothouse side door to sidedeck.
Pilot house/deck saloon	combined with raised pilothouse, galley and dinette. All white leather upholstery and luxury finishing (2021).
Headroom saloon (m)	1,98
Heating	central heating Kabola KB40 EcoLine (2023)
Air-conditioning	reverse cycle airco Climma in all compartments (2 x 20000 BTU)
Dining room	opposite of galley, with electric opening windows for extra ventilation



ABSOLUTE NAVETTA 58 TRAWLER

Dinette	6 persons seating and adaptable table
Sliding door to cockpit	yes
Galley	L-shape, situated in the pilothouse
Countertop	Corian
Sink	stainless steel 1 x
Cooker	electric AEG 4 burner (220v induction)
Extractor	yes
Microwave/oven combi	Siemens (220v, 2024)
Fridge	Waeco
Freezer	Waeco
Wine cooler	yes
Hot water system	on central heating Plus boiler
Water pressure system	electrical
Dishwasher	Bosch (2024)
Crockery	yes
Owners cabin	double bed Full beam owner cabin
Bed length (m)	2,03 x 1,80 mtr, headroom; 2,10 mtr
Wardrobe	hanging/drawers/shelves
Bathroom	en suite I (1,95)
Toilet	en suite
Toilet system	electric Tecma
Wash basin	in the bathroom
Shower	separate
Extra info	Luxe mattress + topper (2024)
Guest cabin 1	double bed Vip cabin
Bed length (m)	2,00 x 1,40 mtr, headroom; 1,98 mtr
Wardrobe	hanging/drawers/shelves
Bathroom	en suite II
Toilet	en suite
Toilet system	electric Tecma
Wash basin	in the bathroom
Shower	en suite



ABSOLUTE NAVETTA 58 TRAWLER

Guest cabin 2	twin single Cabin
Bed length (m)	2 x 1,95 x 0,79 mtr, headroom 1,98 mtr
Wardrobe	hanging and shelves
Bathroom	III
Toilet	yes
Toilet system	electric Tecma
Wash basin	in the bathroom
Shower	yes
Crew cabin(s)	1
Bathroom (crew)	2
Toilet (crew)	1
Toilet system	electric
Wash basin	1
Shower (crew)	1
Washing machine/dryer combi	Hoover (220v)
Flybridge	With dinette, storage-box and sun deck area
Wet bar	flip-up top with washbasin and ice-cube machine
Extra info	The finish and detailing of the interior is a blend of modern and traditional materials. Combining the best of Italian design, craftsmanship and practicality.

MACHINERY

No of engines	2
Make	Volvo Penta
Type	D6-435/IPS-600
HP	435
kW	320.16
Fuel	diesel
Year installed	2015
Maximum speed (kn)	18
Cruising speed (kn)	7,5
Engine hours	1940



ABSOLUTE NAVETTA 58 TRAWLER

Engine cooling system	freshwater heat exchanger
Drive	IPS
Engine controls	electrical Volvo Penta EVC system with Joystick docking
Gearbox	IPS gearboxes 0lus renewed 2021 (967 hours)
Bowthruster	electric Quick 24v/240kgf
Exhaust	watercooled
Manual bilge pump	1
Electric bilge pump	5
Bilge alarm	yes
Electrical installation	12/24/220v
Generator	silent separator Mase IS16B (14kW) in soundproof box
Running hours generator	1970
Start battery	2 x100ah
Service battery	4 x 200ah AGM
Generator battery	1 x
Bowthruster battery	2 x
Battery monitor	Victron Ecran live display plus remote-app
Battery charger	Mastervolt 24v/20-3 (start batteries) plus spare Victron 24/100amp
Inverter	spare Pure Power 24v/2500watt
Battery charger/inverter	Victron Quattro 24v/8000watt/200amp
Shorepower	with cable
Stabilizers	0-speed Seakeeper SK9 Gyro system (2021)
Trimtabs	yes
Extra info	Twin fuel filter system with change-over valves. Oceanled underwater lighting 3 x (2021)
Extra info	Fitted with Volvo Penta Joystick Control and extra docking station aft for comfortable, uncomplicated docking and maneuvering. Including "Skyhook" digital auto-hold positioning system.
Extra info	IPS in combination with the common rail diesel technology can provide up to 30% reduction in fuel consumption opposed to conventional propulsion systems.



ABSOLUTE NAVETTA 58 TRAWLER

NAVIGATION

Compass	Ritchie
Compass on flybridge	Ritchie
Electric compass	via autopilot
Depth sounder	Garmin
Log	Garmin
VHF	Garmin (2015) + handset
Autopilot	Garmin (2015) plus flybridge repeater
Rudder angle indicator	via autopilot
Radar	Garmin (2024)
GPS	Garmin (2015)
Plotter	2 x Garmin MFD 16" (2024) plus 2 x Garmin MFD 12" on flybridge
Wifi antenna	Pepwave Duo Pro 4G(2021)
Electronic chart(s)	UK/Benelux/Scandinavia
AIS transceiver	Garmin (2015)
Navigation lights	yes

EQUIPMENT

Cockpit cover	aft sunscreen (electric) and side covers (2024)
Bimini	yes
Cockpit cushions	full set diamond stitched for forward lounge, aftdeck and flybridge (2022)
Cockpit table	2 x (teak)
Cockpit chairs	(not included)
Bathing platform	Hydraulic lowering by Besenzoni (up to 450kg)
Boarding ladder	stainless steel
Transom door	2 x
Gangway	Besenzoni (hydraulic)
Deck shower	Hot and cold
Anchor	Delta (stainless)



ABSOLUTE NAVETTA 58 TRAWLER

Anchor chain	plus chain-length counter
Windlass	electrical Quick 24v
Capstan	electrical Quick 24v
Sea railing	yes
Grab rail (superstructure)	yes
Pushpit	yes
Pulpit	yes
Life raft	container
Last life raft survey	(out of service date)
Lifebuoy	1 x
Wiper	2 x plus wash
Horn	yes
Fenders	yes
Mooring lines	yes
TV	Samsung 4000k on tv-lift
TracVision ball	Raymarine
Radio	Fusion set with flybridge speakers and front lounge area repeater.
Fire extinguisher	(2024)
Extinguisher in engine room	(2020 last survey)
Extra info	Night deck lighting, suncover for front lounge area.



ABSOLUTE NAVETTA 58 TRAWLER



ABSOLUTE NAVETTA 58 TRAWLER



ABSOLUTE NAVETTA 58 TRAWLER



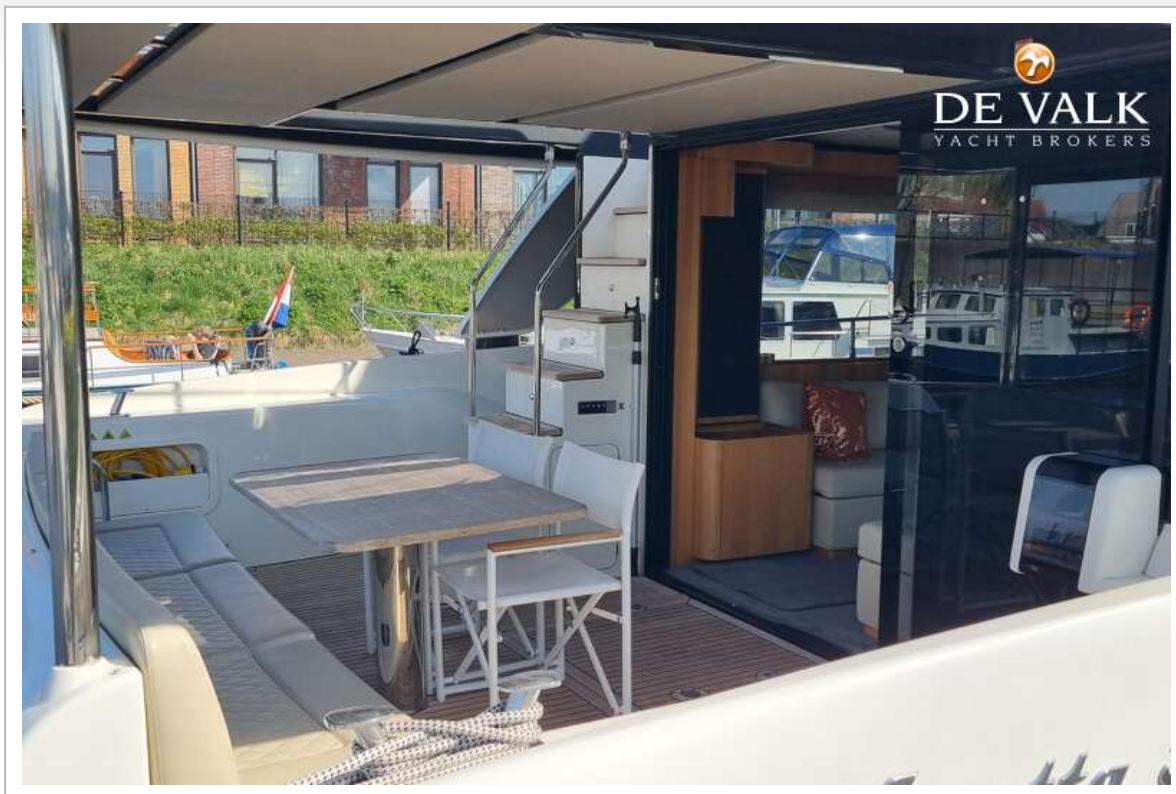
ABSOLUTE NAVETTA 58 TRAWLER



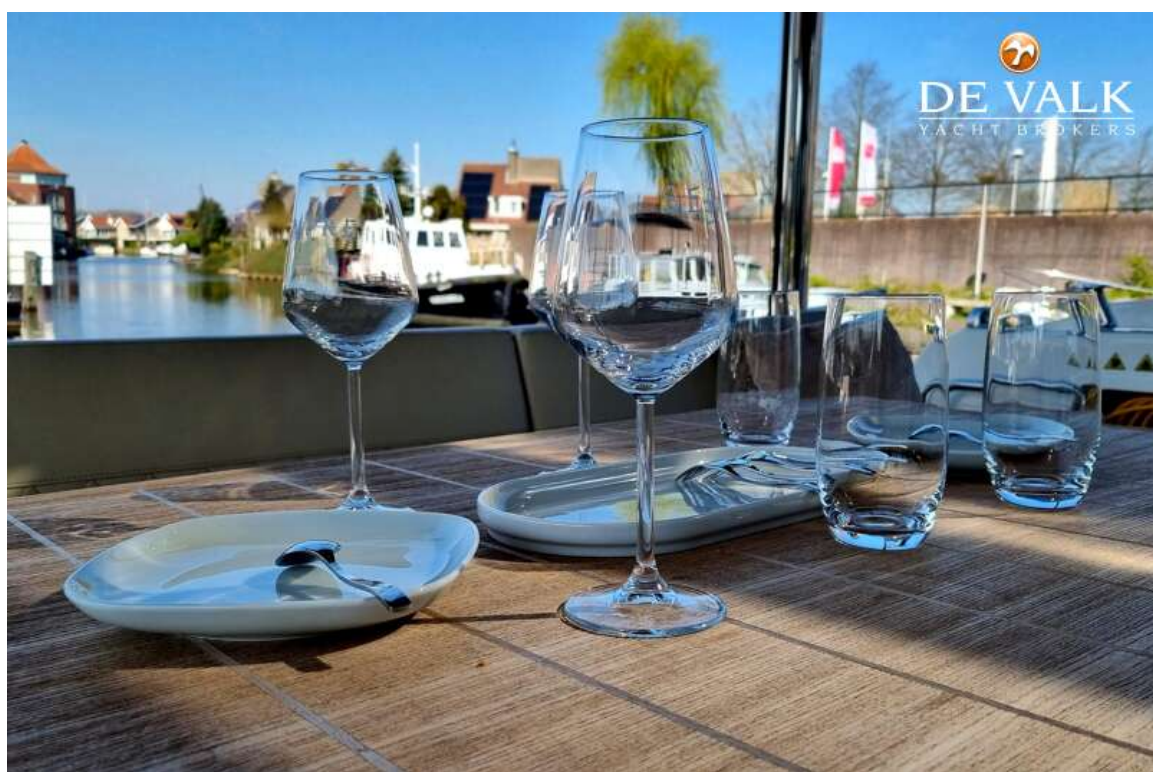
ABSOLUTE NAVETTA 58 TRAWLER



ABSOLUTE NAVETTA 58 TRAWLER



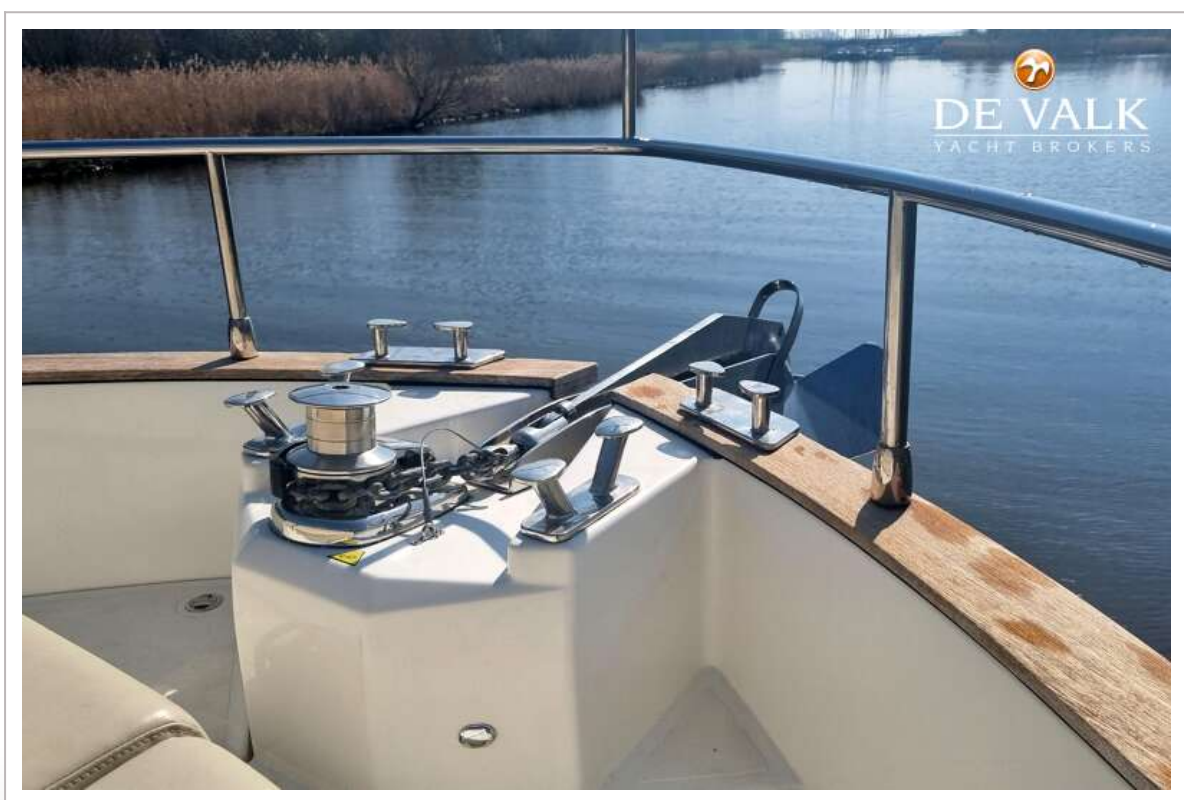
ABSOLUTE NAVETTA 58 TRAWLER



ABSOLUTE NAVETTA 58 TRAWLER



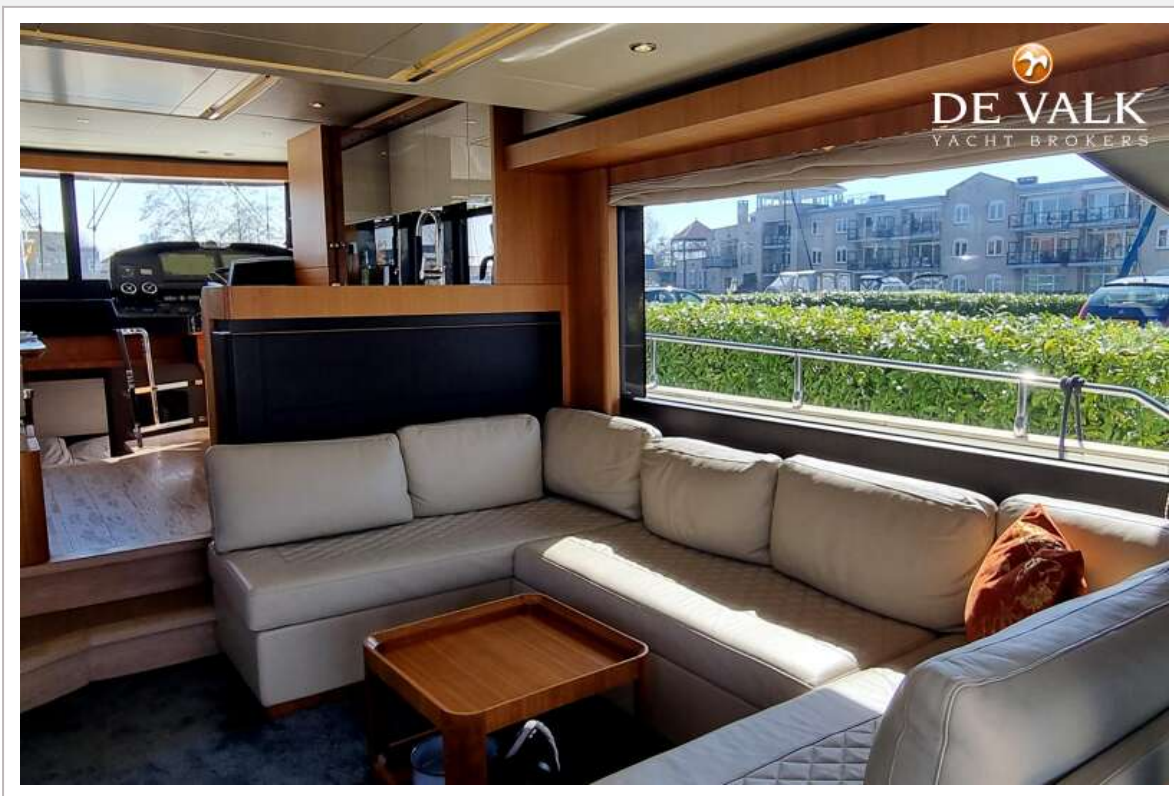
ABSOLUTE NAVETTA 58 TRAWLER



ABSOLUTE NAVETTA 58 TRAWLER



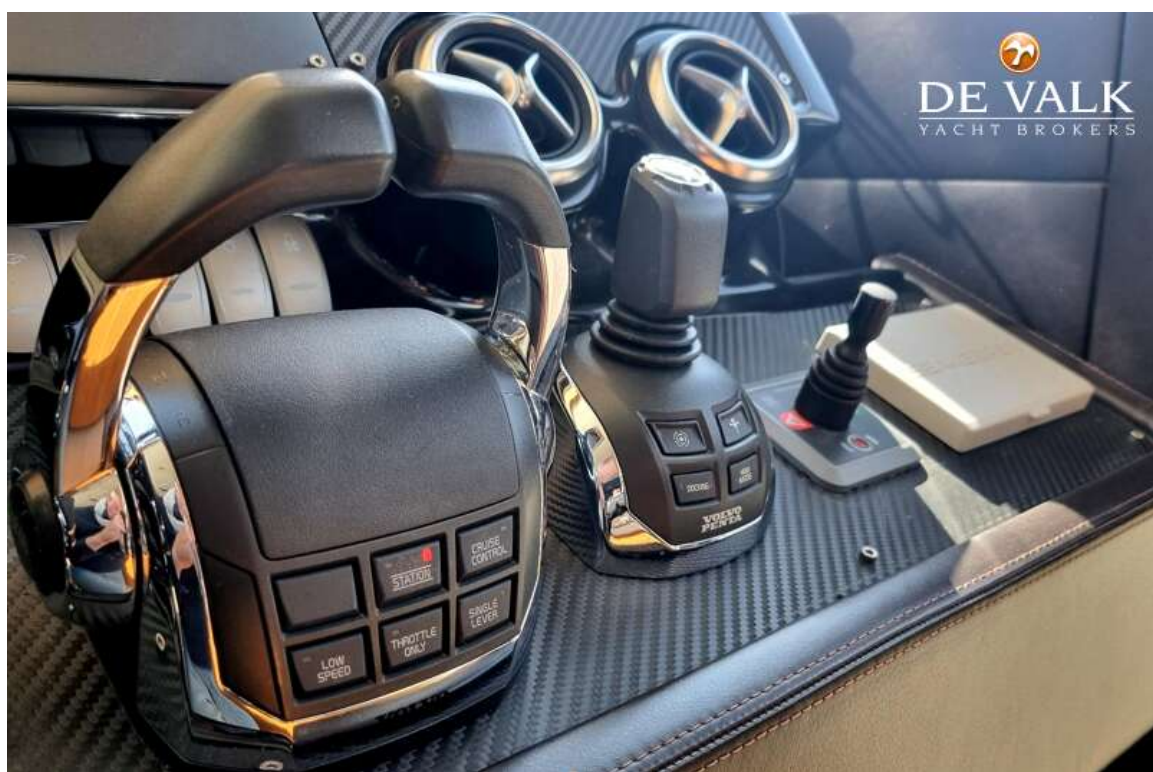
ABSOLUTE NAVETTA 58 TRAWLER



ABSOLUTE NAVETTA 58 TRAWLER



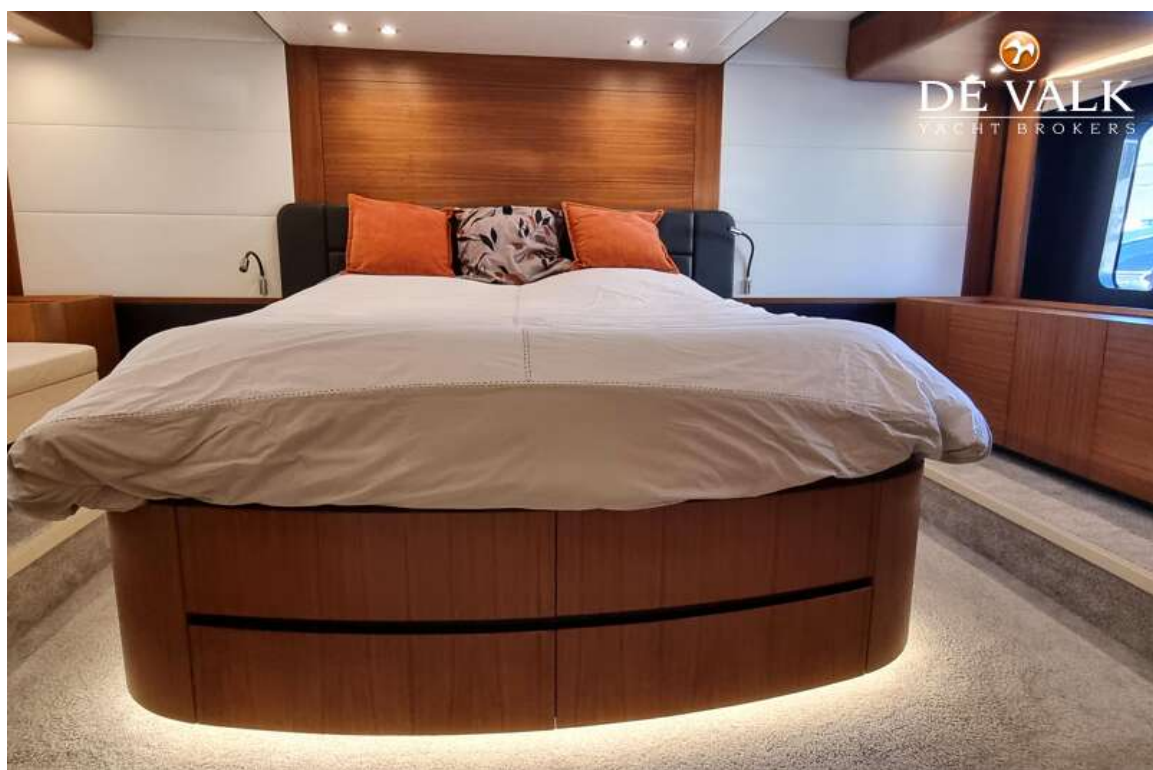
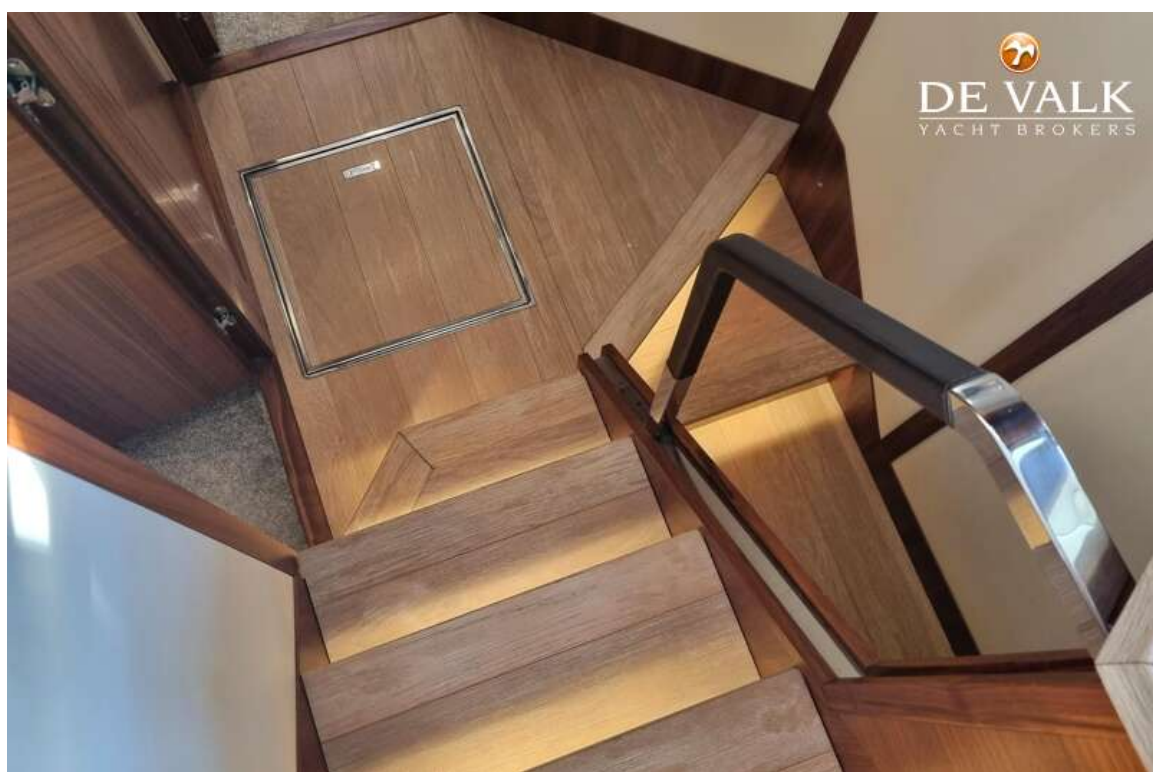
ABSOLUTE NAVETTA 58 TRAWLER



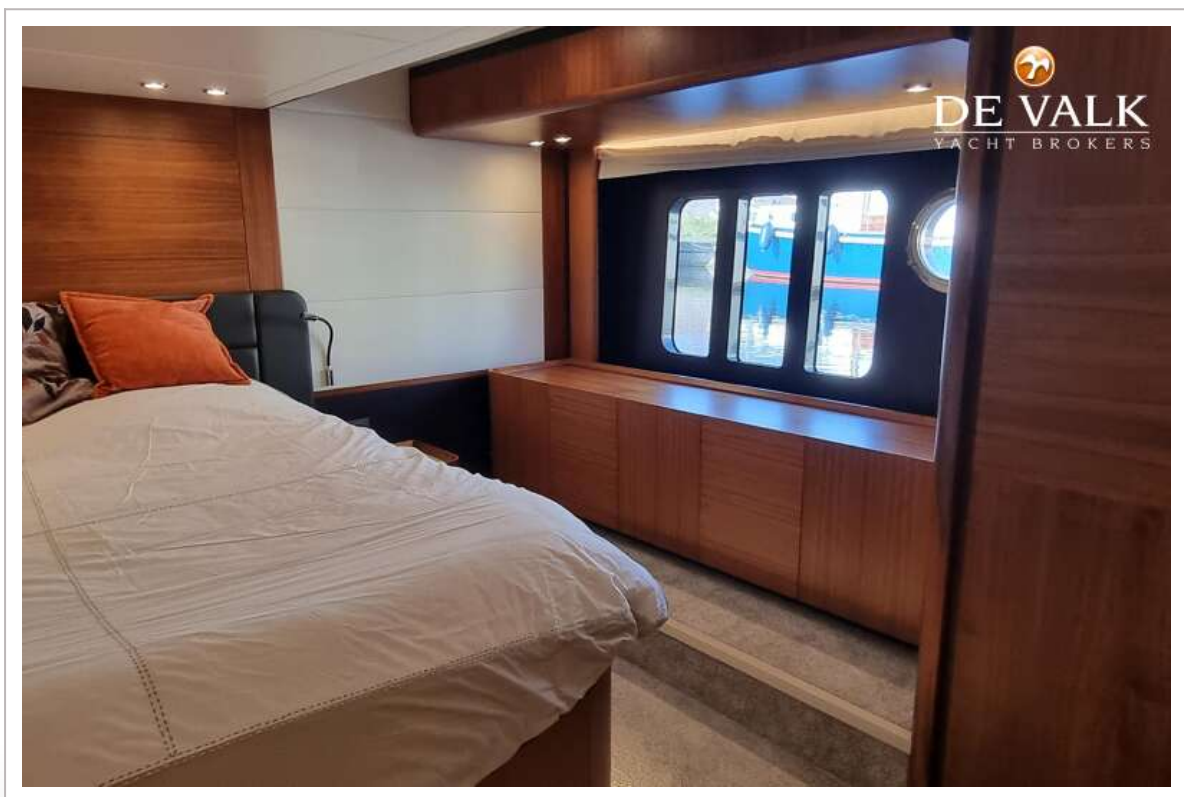
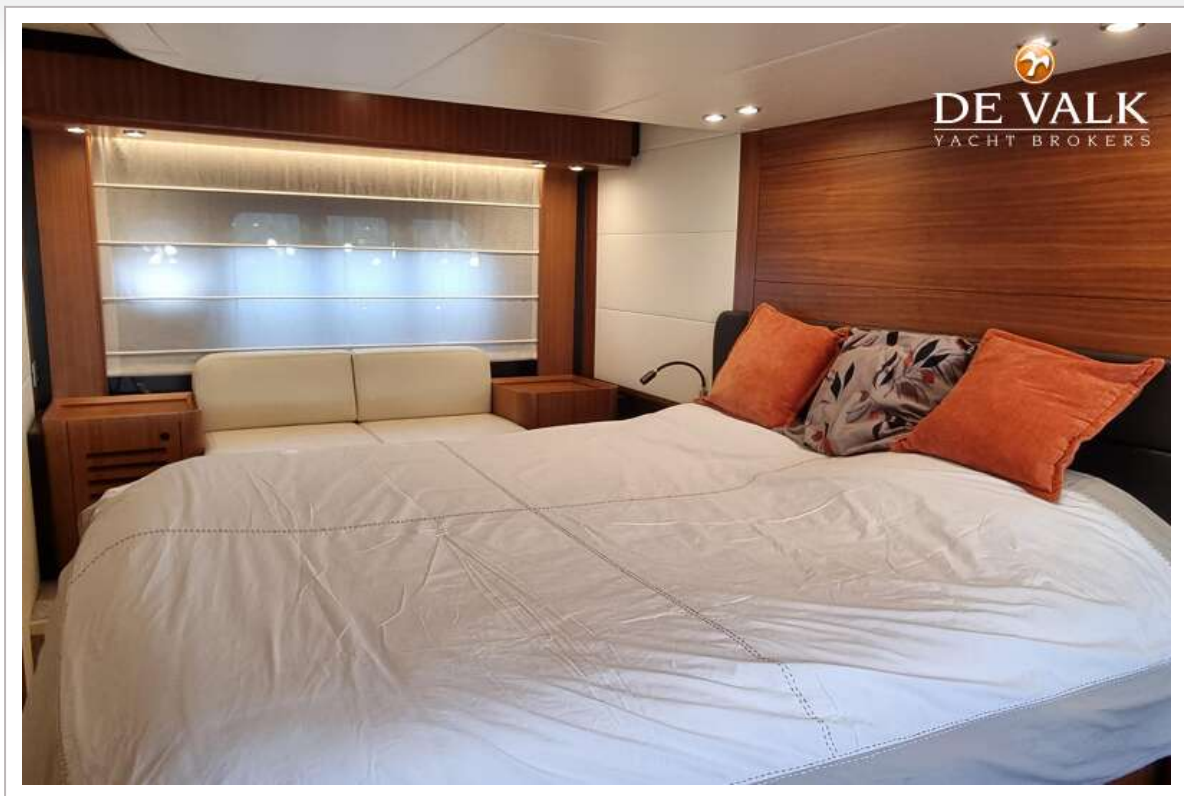
ABSOLUTE NAVETTA 58 TRAWLER



ABSOLUTE NAVETTA 58 TRAWLER



ABSOLUTE NAVETTA 58 TRAWLER



ABSOLUTE NAVETTA 58 TRAWLER



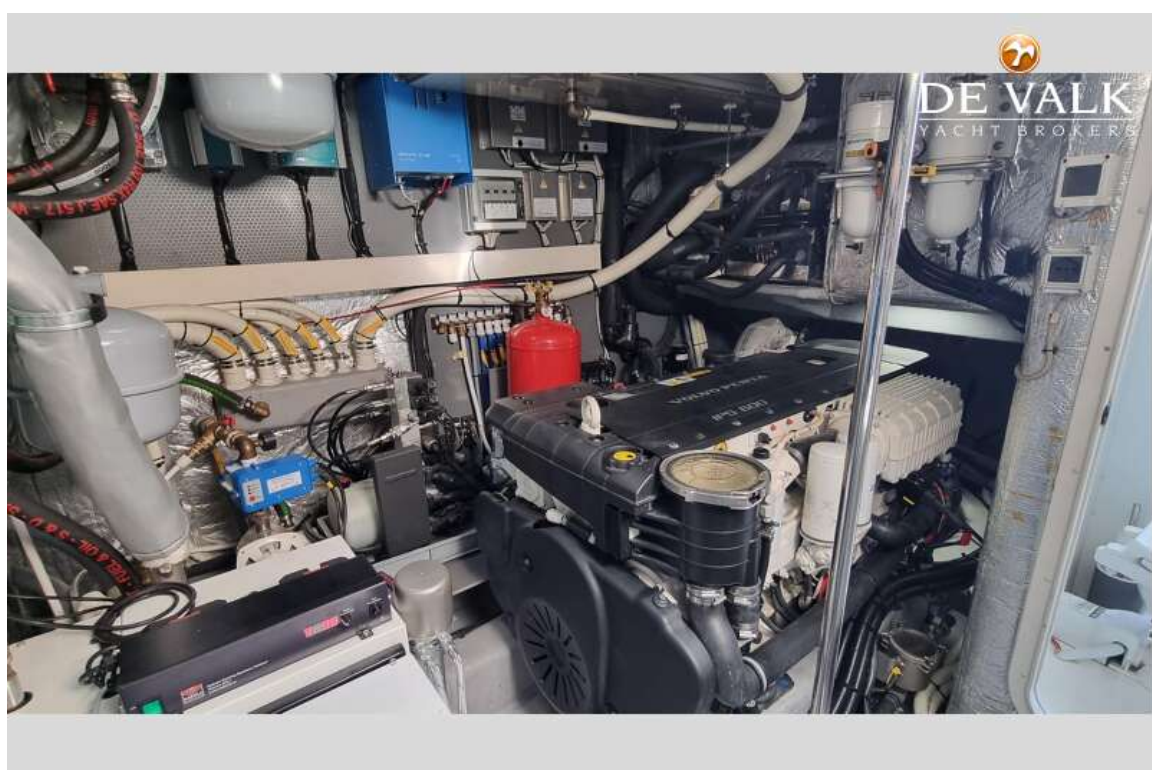
ABSOLUTE NAVETTA 58 TRAWLER



ABSOLUTE NAVETTA 58 TRAWLER



ABSOLUTE NAVETTA 58 TRAWLER



ABSOLUTE NAVETTA 58 TRAWLER



ABSOLUTE NAVETTA 58 TRAWLER

