



SKAGEN 50

## BROKER'S COMMENTS

Nicely styled type luxury trawler motoryacht with modern creature comforts, a raised pilothouse, aft decksalon combined open galley and sumptuous flybrige. The Skagen 50 is in fact a fast trawler that will offer you the best of leisure cruising and fast passage making. Imagine sunset dining at anchor in a bay of your choosing or a quick passage to your next destiny, it is all possible. On deck you will find one-level living, an almost 360 degree view of the surroundings and with sliding doors open a wealth of light and space will open up for you. This Skagen 50 comes comprehensively equipped.

*Marc Weijenberg*

## SPECIFICATIONS

<b>Dimensions</b>	16.35 x 4.80 x 1.35 (m)	<b>Builder</b>	Skagen Yachts
<b>Built</b>	2006	<b>Cabins</b>	3
<b>Material</b>	GRP	<b>Berths</b>	6
<b>Engine(s)</b>	2 x Yanmar 6LYBA diesel	<b>Hp/Kw</b>	2 x 480.00 (hp), 353.28 (kw)
<b>Asking price</b>	sold (VAT )	<b>Lying</b>	elsewhere / Not at sales office

## CONTACT

<b>Sales office</b>	De Valk Thuishaven	<b>Telephone</b>	+31 35 5829042
<b>Address</b>	Peperstraat 7 1411 PX Naarden NL	<b>E-mail</b>	thuishaven@devalk.nl

## DISCLAIMER

These particulars are given in good faith as supplied but cannot be guaranteed.



## GENERAL

Model	SKAGEN 50
Type	motor yacht
LOA (m)	16,35
Beam (m)	4,80
Draft (m)	1,35
Air draft (m)	5,30
Headroom (m)	1,95
Year built	2006
Builder	Skagen Yachts
Country	Slovak Republic
Designer	J&J Design
Displacement (t)	21
CE norm	A
Hull material	GRP
Hull colour	white
Hull shape	Fast Displacement Hull
Keel type	long keel
Superstructure material	GRP
Rubbing strake	Teak + stainless strip
Deck material	GRP
Deck finish	teak
Cockpit deck finish	teak
Window frame	stainless steel
Window material	tempered glass Tinted glass
Deckhatch	for ownercabin and pilothouse access to flybridge
Portholes	yes
Flybridge	with U-shaped dinette and extended aft area for sunbathing and shade in the cockpit.
Radar arch	non collapsible
Fuel tank (litre)	steel 2 x 1080
Fuel tank 2 (litre)	stainless steel 1 x 1160



<b>Freshwater tank (litre)</b>	stainless steel 1 x 610 (+ 400 ltrs polythelene)
<b>Blackwater tank (litre)</b>	stainless steel 180
<b>Blackwater tank extraction</b>	deck extraction + pump
<b>Inside helm position</b>	hydraulic
<b>Flybridge helm position</b>	hydraulic
<b>More info on hull</b>	LOA 16,30 mtr, hull length 14,99 mtr. Semi-planing fast trawler style hull design for smooth displacement and faster trips. Very much comparable to the likes of Grand Banks, Fleming, Hardy, Krogen etc.
<b>Extra info</b>	The flybridge can be safely accessed via the cockpit stairs and the staircase in the pilothouse.
<b>Extra info</b>	Radar pole mast (on radar arch) can be lowered manually. Headway from 6,10 to 5,30 mtrs.

## ACCOMMODATION

<b>Cabins</b>	3
<b>Berths</b>	6
<b>Crew cabin</b>	1, now in use for the extra watertank. Can be re-instated as a crewcabin
<b>Interior</b>	Cherry with light panelling
<b>Floor</b>	wood
<b>Aft deck</b>	yes
<b>Pilot house</b>	raised pilothouse with stb-side opening door ot deck, inner helmposition, extra seating and 2nd access to the flybridge
<b>Deck saloon</b>	with L-shaped sofa, 2 comfy chais, open galley and sliding doors to the aftdeck
<b>Headroom saloon (m)</b>	1,98
<b>Heating</b>	diesel ducted hot air Webasto 5500 (2021)
<b>Air-conditioning</b>	reverse cycle airco Coolmaxx (3 x units)
<b>Sliding door to cockpit</b>	2 x
<b>Galley</b>	yes
<b>Countertop</b>	Corian
<b>Sink</b>	stainless steel 2 x



<b>Cooker</b>	ceramic 3 burner (220v)
<b>Microwave/oven combi</b>	Siemens (220v)
<b>Fridge</b>	1 x fridge, 1 x fridge/freezer
<b>Hot water system</b>	220V + engine
<b>Water pressure system</b>	electrical
<b>Dishwasher</b>	Bosch
<b>Owners cabin</b>	double bed
<b>Bed length (m)</b>	2,00 x 1,60 mtr, headroom 2,00 mtr
<b>Wardrobe</b>	hanging/drawers/shelves
<b>Bathroom</b>	en suite I
<b>Toilet</b>	en suite
<b>Toilet system</b>	electric Tecma
<b>Wash basin</b>	in the bathroom
<b>Shower</b>	separate
<b>Extra info</b>	Coolmaxx airconditioning
<b>Guest cabin 1</b>	twin single
<b>Bed length (m)</b>	2,00 x 0,80 mtr, headroom 2,00 mtr
<b>Wardrobe</b>	hanging and shelves
<b>Bathroom</b>	II
<b>Toilet</b>	shared
<b>Toilet system</b>	electric Tecma
<b>Wash basin</b>	in the bathroom
<b>Shower</b>	shared
<b>Extra info</b>	Coolmaxx airconditioning
<b>Guest cabin 2</b>	twin single
<b>Bed length (m)</b>	2,00 x 0,80 mtr, headroom 2,00 mtr
<b>Wardrobe</b>	hanging and shelves
<b>Extra info</b>	Coolmaxx airconditioning
<b>Washing machine/dryer combi</b>	Bosch
<b>Wet bar</b>	on flybridge with sink and fridge
<b>Extra info</b>	curtains for salon and pilothouse, carpets for cabins and salon
<b>Extra info</b>	cabin lockers and storage lined with cedar wood



## MACHINERY

No of engines	2
Make	Yanmar
Type	6LYBA
HP	480
kW	353.28
Fuel	diesel
Year installed	2006
Maximum speed (kn)	21
Cruising speed (kn)	8
Consumption (l/hr)	20
Engine hours	2460
Engine cooling system	freshwater heat exchanger
Drive	shaft
Engine controls	electrical 2 x Yanmar
Gearbox	hydraulic Yanmar/Kanzaki
Bowthruster	electric Vetus 24v/9,6 hp
Sternthruster	electric Vetus 24v/9,6 hp
Exhaust	watercooled
Propeller type	fixed
Propeller blades	4
Propeller shaft material	stainless steel
Shaft lubrication	water
Manual bilge pump	2 x
Electric bilge pump	4 x
Bilge alarm	yes
Electrical installation	24v/220v
Generator	silent separator Kohler12kW (in box)
Running hours generator	680
Start battery	2 x
Service battery	12 x 2v (24v/600ah)



Generator battery	1 x
Bowthruster battery	2 x
Sternthruster battery	2 x
Battery monitor	Mastervolt mobile app
Battery charger	Mastervolt 24v/100amp
Inverter	Mastervolt 24v/2500watt/220v
Shorepower	with cable
Trimtabs	yes
Extra info	Heavy duty 24v/160amp alternator, double Racor change over filtersystem on both Yanmar engines,

## NAVIGATION

Compass	White Star
Electric compass	via the autopilot
Depth sounder/log	Raymarine ST60 Multi
Repeater	on flybridge
VHF	2 x Raymarine Ray240E
Autopilot	Raymarine ST6001 + remote
Rudder angle indicator	via the autopilot
Radar	Raymarin Quantum 2 Doppler wifi (2021)
GPS	Raymarine
Plotter	2 x Raymarine Axiom 12" (2021)
Plotter/GPS	Raymarine E80 (flybridge)
Electronis chart(s)	yes
AIS transponder	Raymarine AIS700 (class B, 2021)
Navigation lights	+ deck lighting
Searchlight	remote operation from inside helmposition

## EQUIPMENT

Cockpit cover	yes
Bimini	yes



Cockpit cushions	sofa bow and cockpit seating (2021)
Bathing platform	with dinghy brackets
Boarding ladder	stainless steel
Transom door	yes
Gangway	2,70 mtr electro-hydraulic, lift capacity 400kg
Deck shower	hot + cold water
Anchor	Pool
Anchor chain	60 mtrs
Chain counter	no
Windlass	electrical Quick (24v/2000watt)
Capstan	2 extra aft electric docking-capstans for ease of handling mooringlines Quick
Deck wash	in anchor locker
Sea railing	stainless steel
Pushpit	yes
Pulpit	yes
Lifebuoy	yes
Wiper	3 x (with wipe-wash)
Window ventilator	3 x
Horn	yes
Fenders	yes
Mooring lines	yes
TV	yes
Radio-cd player	yes
Cockpit speakers	yes
Speakers in salon	yes
Fire extinguisher	4 x (2022)
Extinguisher in engine room	not in operation





# SKAGEN 50

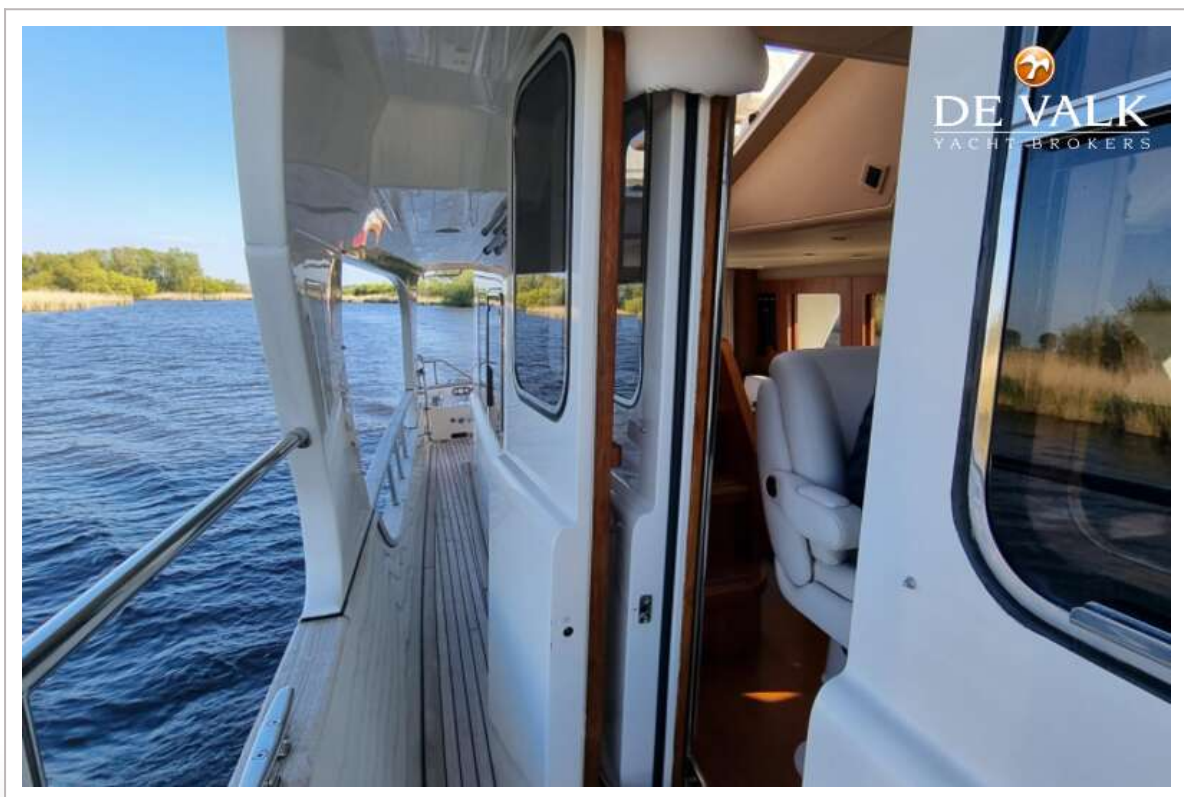


# SKAGEN 50





# SKAGEN 50

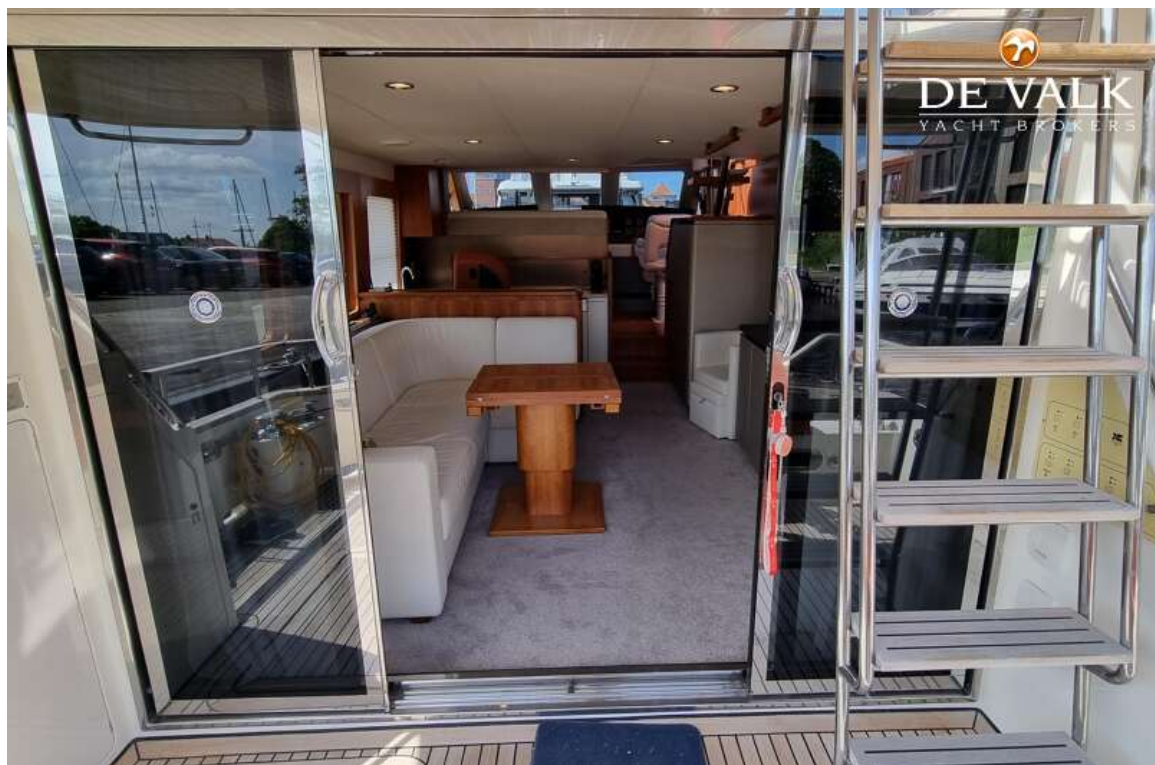


# SKAGEN 50



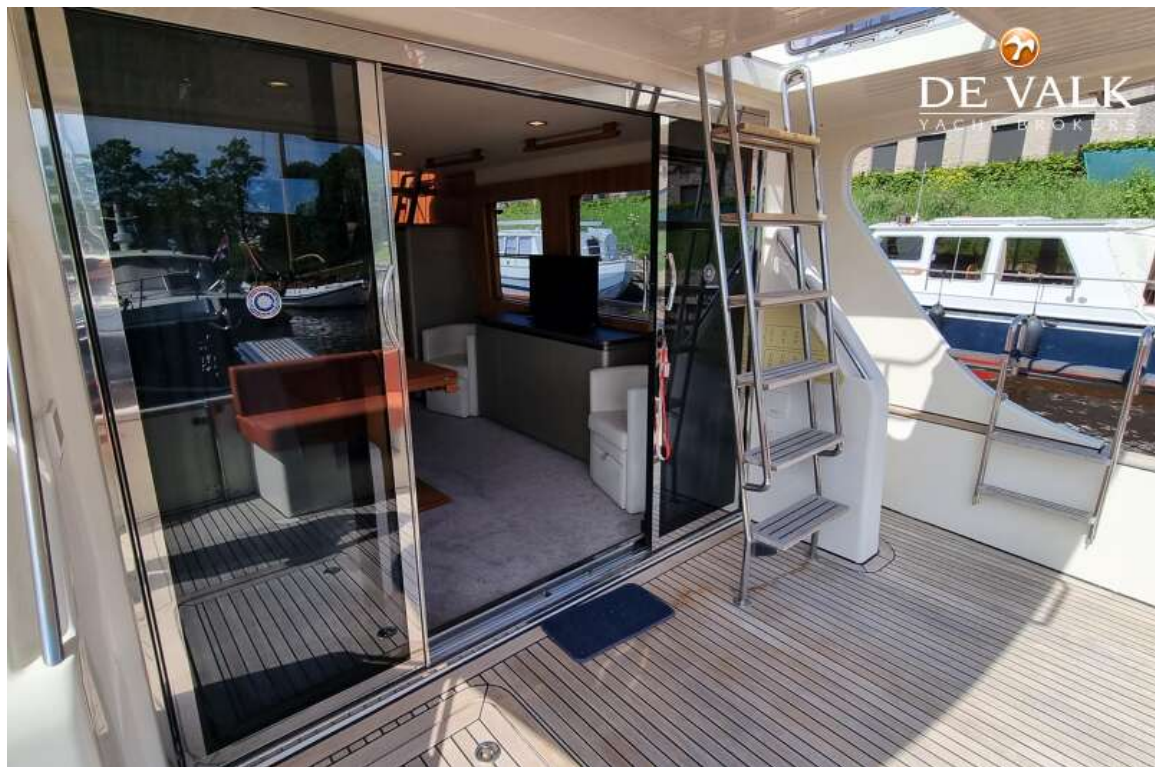


# SKAGEN 50





# SKAGEN 50

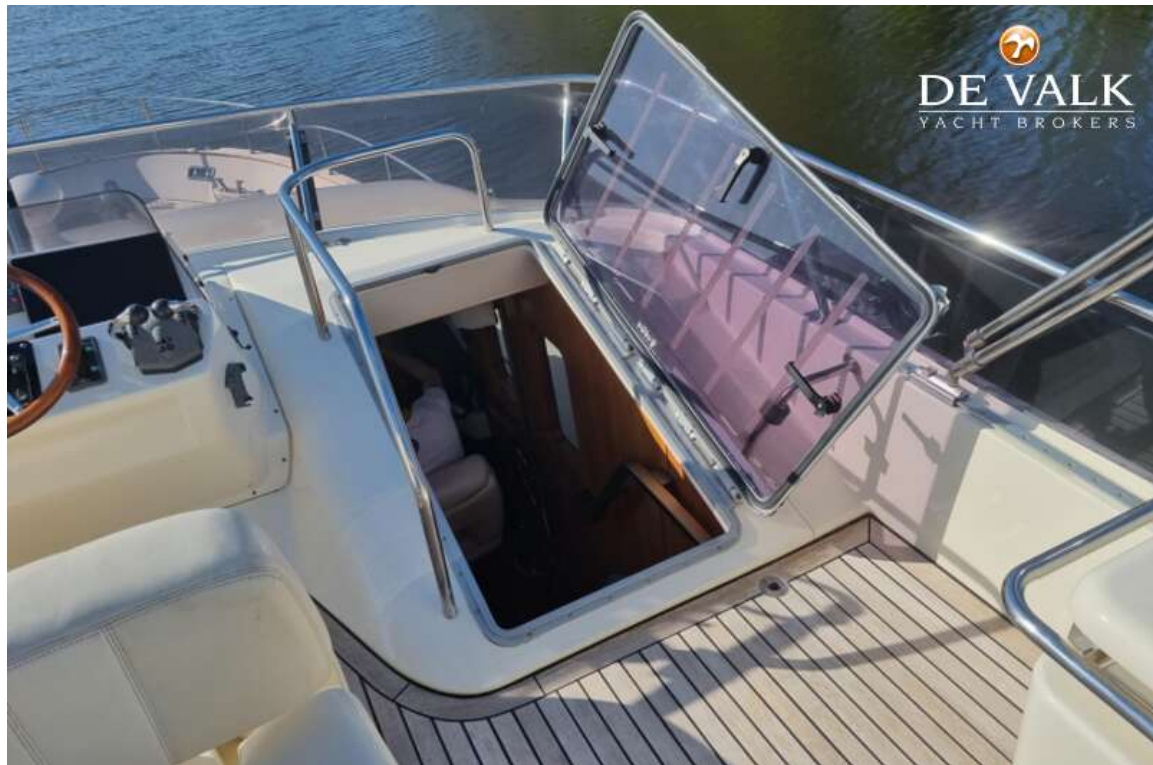




## SKAGEN 50



## SKAGEN 50

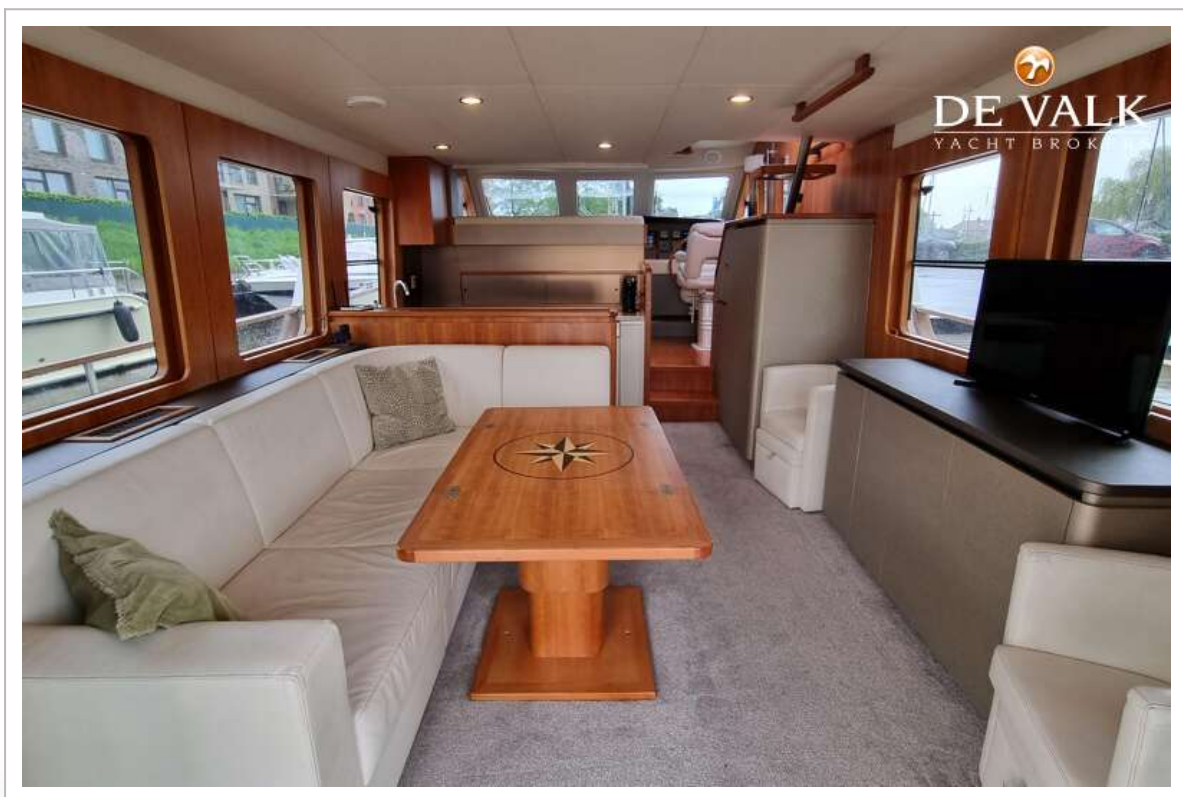




## SKAGEN 50

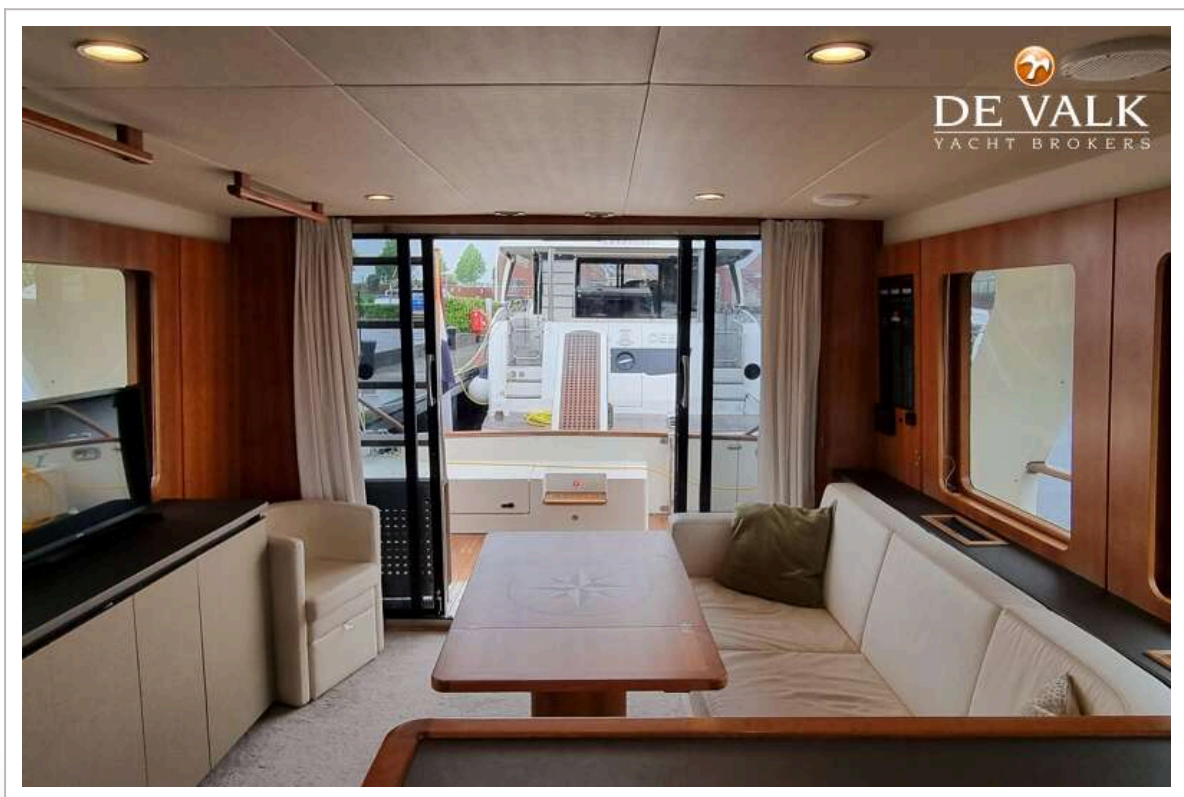
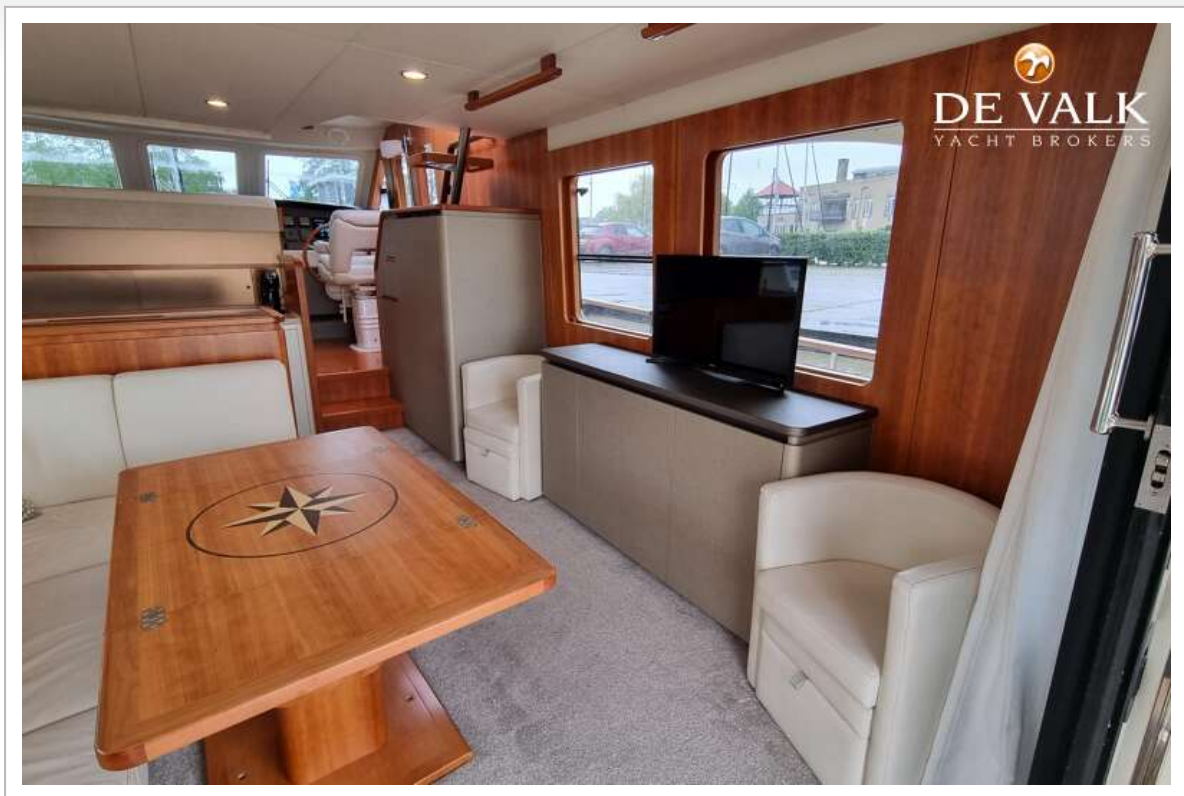


# SKAGEN 50

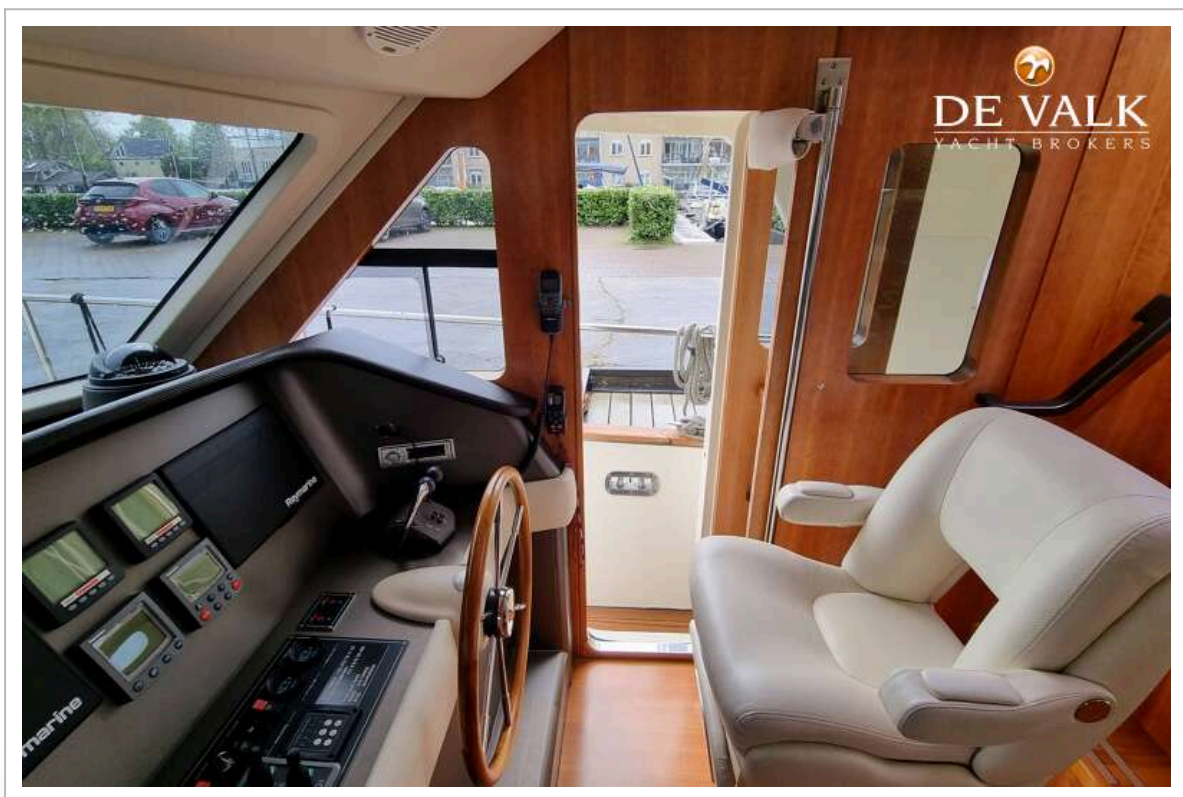
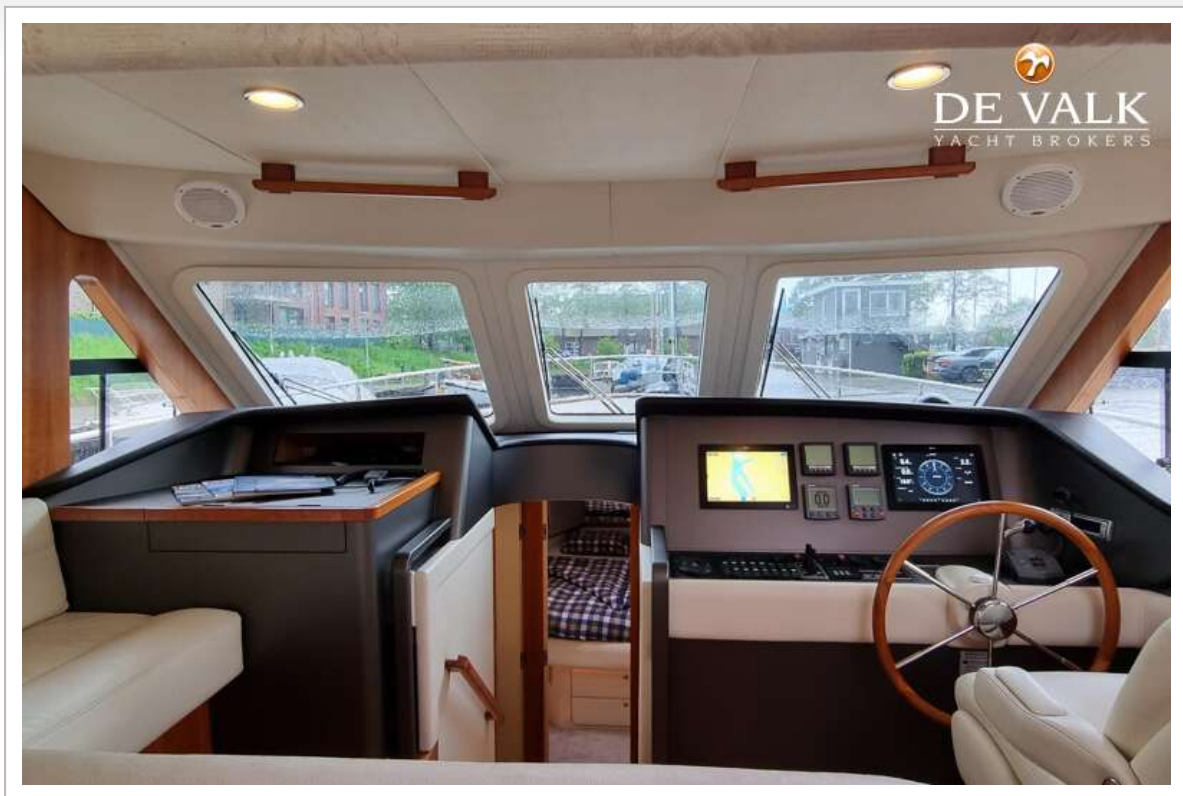




# SKAGEN 50



# SKAGEN 50





# SKAGEN 50



# SKAGEN 50





# SKAGEN 50

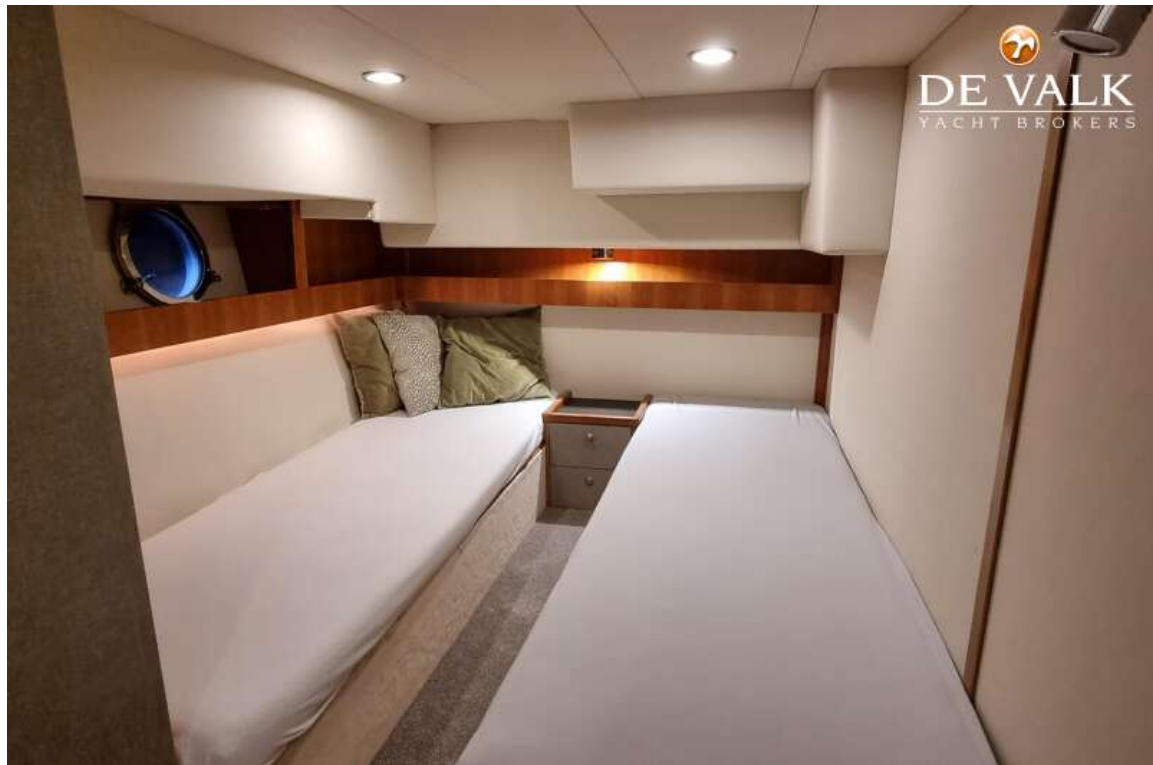


## SKAGEN 50





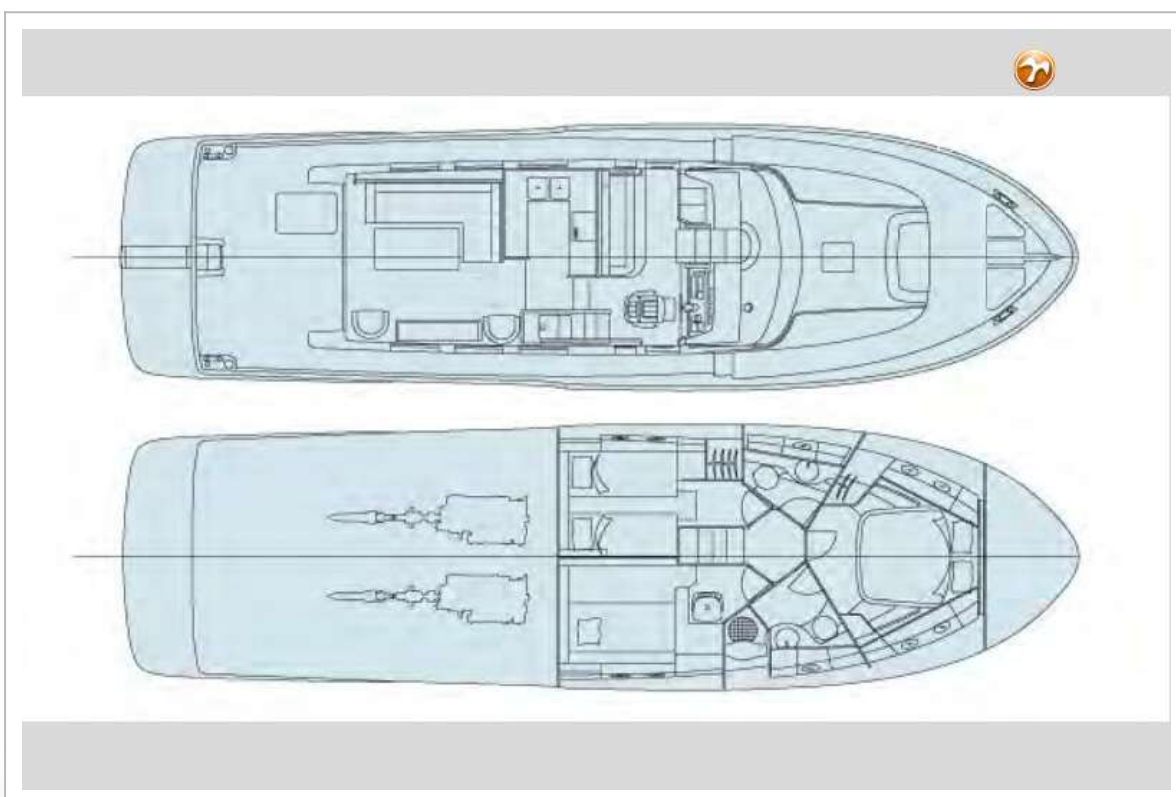
# SKAGEN 50



## SKAGEN 50



# SKAGEN 50





# SKAGEN 50

