



DE VALK  
YACHT BROKERS



FEELING 32 DI



DE VALK  
YACHT BROKERS

# FEELING 32 DI

## BROKER'S COMMENTS

This well maintained Feeling 32 DI is ideal for spending time on tidal waters. Her lift keel gives you the same sailing area and possibilities as a flat bottom yacht without giving in on sailing capacities. The Feeling 32 DI is due to her spacious interior very pleasant to stay on with your family or friends. This Feeling 32 DI has lots of renewings so take your time for the specifications and feel free to contact us for more information. She is now ready for a visit at our sales office in Sint Annaland.

*Joris van de Rijt*

## SPECIFICATIONS

<b>Dimensions</b>	9.95 x 3.42 x 0,65 / 1.90 (m)	<b>Builder</b>	Kirie
<b>Built</b>	2000	<b>Cabins</b>	2
<b>Material</b>	GRP	<b>Berths</b>	7
<b>Engine(s)</b>	1 x Volvo Penta MD2030 diesel	<b>Hp/Kw</b>	29.00 (hp), 21.34 (kw)
<b>Asking price</b>	sold (VAT )	<b>Lying</b>	at sales office

## CONTACT

<b>Sales office</b>	De Valk Sint Annaland	<b>Telephone</b>	+31 166 601 000
<b>Address</b>	Koelhuisweg 4 4697 RM Sint Annaland The Netherlands	<b>E-mail</b>	sintannaland@devalk.nl

## DISCLAIMER

These particulars are given in good faith as supplied but cannot be guaranteed.



## GENERAL

<b>Model</b>	FEELING 32 DI
<b>Type</b>	sailing yacht
<b>LOA (m)</b>	9,95
<b>LWL (m)</b>	8,70
<b>Beam (m)</b>	3,42
<b>Draft (m)</b>	1,90
<b>Draft min (m)</b>	0,65
<b>Air draft (m)</b>	14,20
<b>Headroom (m)</b>	1,92
<b>Year built</b>	2000
<b>Builder</b>	Kirie
<b>Country</b>	France
<b>Designer</b>	Michel Joubert/Patrick Roseo
<b>Displacement (t)</b>	4,45
<b>Ballast (tonnes)</b>	1,55
<b>CE norm</b>	B
<b>Hull material</b>	GRP
<b>Hull colour</b>	white
<b>Hull shape</b>	round-bilged
<b>Keel type</b>	centreboard
<b>Superstructure material</b>	GRP
<b>Rubbing strake</b>	aluminum With teak
<b>Deck material</b>	GRP
<b>Deck finish</b>	non-skid moulded in
<b>Superstructure deck finish</b>	non-skid moulded in
<b>Cockpit deck finish</b>	non-skid moulded in Teak on benches
<b>Antifouling (year)</b>	2022
<b>Window frame</b>	aluminium
<b>Window material</b>	perspex
<b>Deckhatch</b>	yes



<b>Portholes</b>	aluminium 2 x
<b>Fuel tank (litre)</b>	60
<b>Level indicator (fuel tank)</b>	yes
<b>Freshwater tank (litre)</b>	200
<b>Blackwater tank (litre)</b>	yes
<b>Blackwater tank extraction</b>	pump
<b>Tiller</b>	With 2 x spade rudder
<b>Extra info</b>	Refit rudder blades + new rudder stocks 2020
<b>Extra info</b>	Through-hull mounts and sea cocks renewed in 2022

## ACCOMMODATION

<b>Cabins</b>	2
<b>Berths</b>	7
<b>Interior</b>	ash
<b>Floor</b>	woodprint
<b>Headroom saloon (m)</b>	1,92
<b>Heating</b>	diesel ducted hot air Eberspacher
<b>Chart table</b>	yes
<b>Aft Cabin</b>	yes
<b>Dinette</b>	yes
<b>Dinette to convert into berth</b>	With cushion
<b>Galley</b>	(new tap 2022)
<b>Countertop</b>	plastic
<b>Sink</b>	stainless steel
<b>Cooker</b>	calor gas Eno one (new 2021)
<b>Oven</b>	Eno one
<b>Fridge</b>	Toploader
<b>Hot water system</b>	220V + engine Isothemp (new 2021)
<b>Water pressure system</b>	electrical
<b>Manual and/or foot pump</b>	yes
<b>Owners cabin</b>	v-bed 1,90



<b>Bed length (m)</b>	yes
<b>Wardrobe</b>	hanging and shelves
<b>Bathroom</b>	shared (new tap 2022)
<b>Toilet</b>	shared
<b>Toilet system</b>	manual
<b>Wash basin</b>	in the bathroom
<b>Shower</b>	shared
<b>Guest cabin 1</b>	double bed (new mattress foam 2021)
<b>Bed length (m)</b>	1,95 x 1,35
<b>Wardrobe</b>	hanging and shelves

## MACHINERY

<b>No of engines</b>	1
<b>Make</b>	Volvo Penta
<b>Type</b>	MD2030
<b>HP</b>	29
<b>kW</b>	21.34
<b>Fuel</b>	diesel
<b>Year installed</b>	2000
<b>Engine cooling system</b>	freshwater heat exchanger
<b>Drive</b>	shaft
<b>Engine controls</b>	bowden cable (new gear/throttle handle 2021)
<b>Gearbox</b>	mechanical
<b>Bowthruster</b>	electric Sidepower (completely new placed in 2022)
<b>Propeller type</b>	folding Flexofold (new 2020)
<b>Propeller blades</b>	3
<b>Propeller shaft material</b>	stainless steel
<b>Shaft lubrication</b>	water Volvo seal
<b>Manual bilge pump</b>	yes
<b>Electric bilge pump</b>	Osculati - automatic (new 2021)
<b>Bilge alarm</b>	Osculati



<b>Electrical installation</b>	12V/2230V
<b>Start battery</b>	1 x
<b>Service battery</b>	2 x 100 Ah YBX Active Leisure & Marine Class B (new 2022)
<b>Bowthruster battery</b>	1 x (new 2022)
<b>Battery monitor</b>	Victron BMV 702 (new 2021)
<b>Battery charger</b>	Victron IP22 (new 2022)
<b>Shorepower</b>	with cable
<b>Extra info</b>	New 2020: engine brackets, engine flywheel

## NAVIGATION

<b>Compass</b>	Plastimo (new 2022)
<b>Depth sounder/log</b>	Raymarine tridata
<b>Windset</b>	Raymarine (new 2019)
<b>VHF</b>	Shipmate RS 8300
<b>Autopilot</b>	Raymarine EV100 (new 2020)
<b>GPS</b>	Furuno
<b>Plotter/GPS</b>	Raymarine 9S (new 2021)
<b>AIS transceiver</b>	Vesper Marine AIS Watchmate 850 Class B (new 2019)
<b>EPIRB</b>	Oceansignal (new 2018)
<b>Navigation lights</b>	With new LED 3 colour top light 2021

## EQUIPMENT

<b>Sprayhood with grab rail</b>	yes
<b>Bathing platform</b>	yes
<b>Boarding ladder</b>	stainless steel
<b>Deck shower</b>	yes
<b>Anchor</b>	Bruce
<b>Anchor chain</b>	yes
<b>Windlass</b>	electrical Lofrans SX1 800 watt (new 2022)
<b>Sea railing</b>	wire
<b>Grab rail (superstructure)</b>	stainless steel



<b>Pushpit</b>	yes
<b>Pulpit</b>	yes
<b>Life raft</b>	container Plastimo Cruiser
<b>Life raft (pers)</b>	6
<b>Last life raft survey</b>	Expired 07-2021
<b>Lifebuoy</b>	yes
<b>Danbuoy</b>	yes
<b>Radar reflector</b>	yes
<b>Fenders</b>	yes
<b>Mooring lines</b>	yes
<b>Radio-cd player</b>	Pioneer with bluetooth
<b>Speakers in salon</b>	yes
<b>Fire extinguisher</b>	yes
<b>Extra info</b>	Barometer (new 2022)

## RIGGING

<b>Rigging</b>	fractional
<b>Standing rigging</b>	wire (new 2018)
<b>Brand mast</b>	(new mast placed in 2018)
<b>Material mast</b>	aluminium
<b>Spreaders</b>	1 x set
<b>Mainsail cover</b>	Blue
<b>Fully battened mainsail</b>	(new 2015)
<b>High aspect</b>	yes
<b>Genoa I</b>	(new 2016)
<b>Genoa II</b>	(new 2010)
<b>Genoa furler</b>	Harken (new 2018)
<b>Gennaker</b>	Quantum Sails Gennaker with a snuffer (seperate) (2002)
<b>Spinnaker</b>	Lion Sails Spinnaker (new 2015)
<b>Reefing System</b>	quick-one-line-reefing Reef 1 from cockpit reef 2 from mast (not one line)



<b>Backstay adjuster</b>	tackle
<b>Boomvang</b>	gasspring
<b>Genoa sheetwinches</b>	2 x Harken 40st
<b>Halyard winches</b>	2 x Harken 16st
<b>Spi-pole</b>	aluminium
<b>Gennaker pole</b>	stainless steel
<b>Extra info</b>	Lazy-Jacks
<b>Extra info</b>	Mast, rigging, dyneema halyards new 2018. Boom new 2020





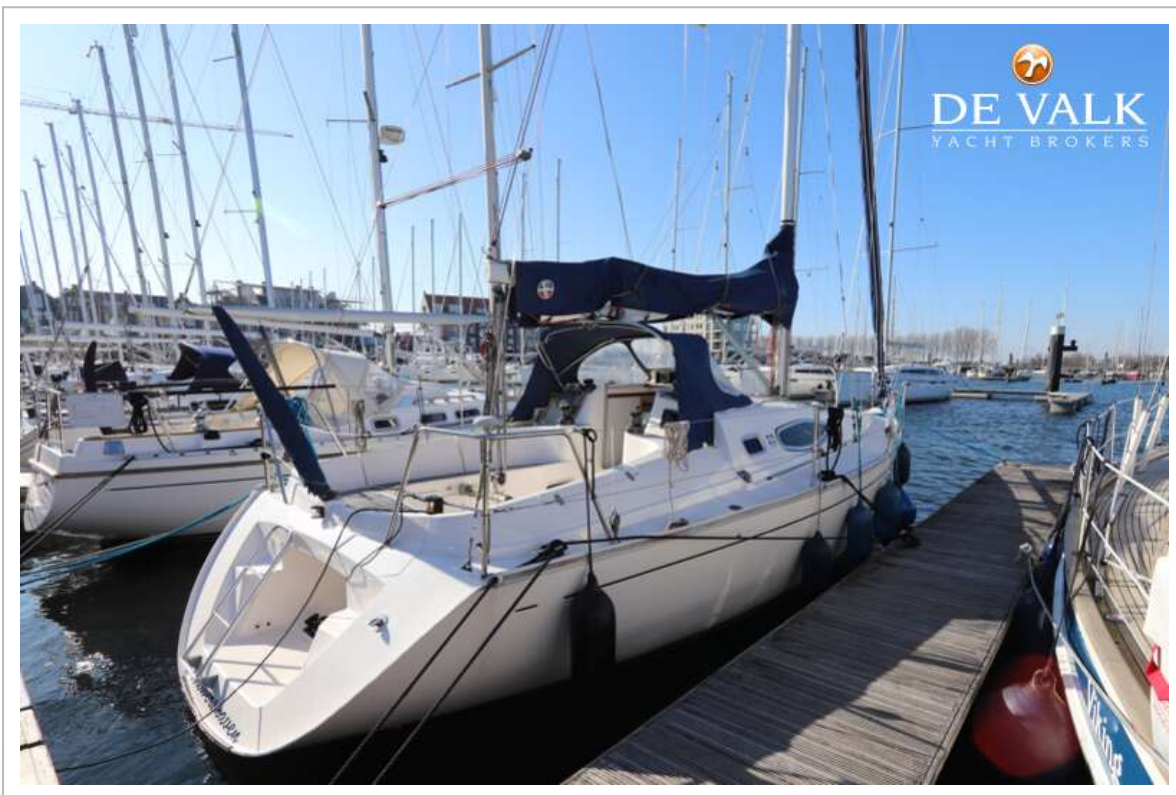


# FEELING 32 DI





# FEELING 32 DI



# FEELING 32 DI



# FEELING 32 DI



# FEELING 32 DI



# FEELING 32 DI





# FEELING 32 DI



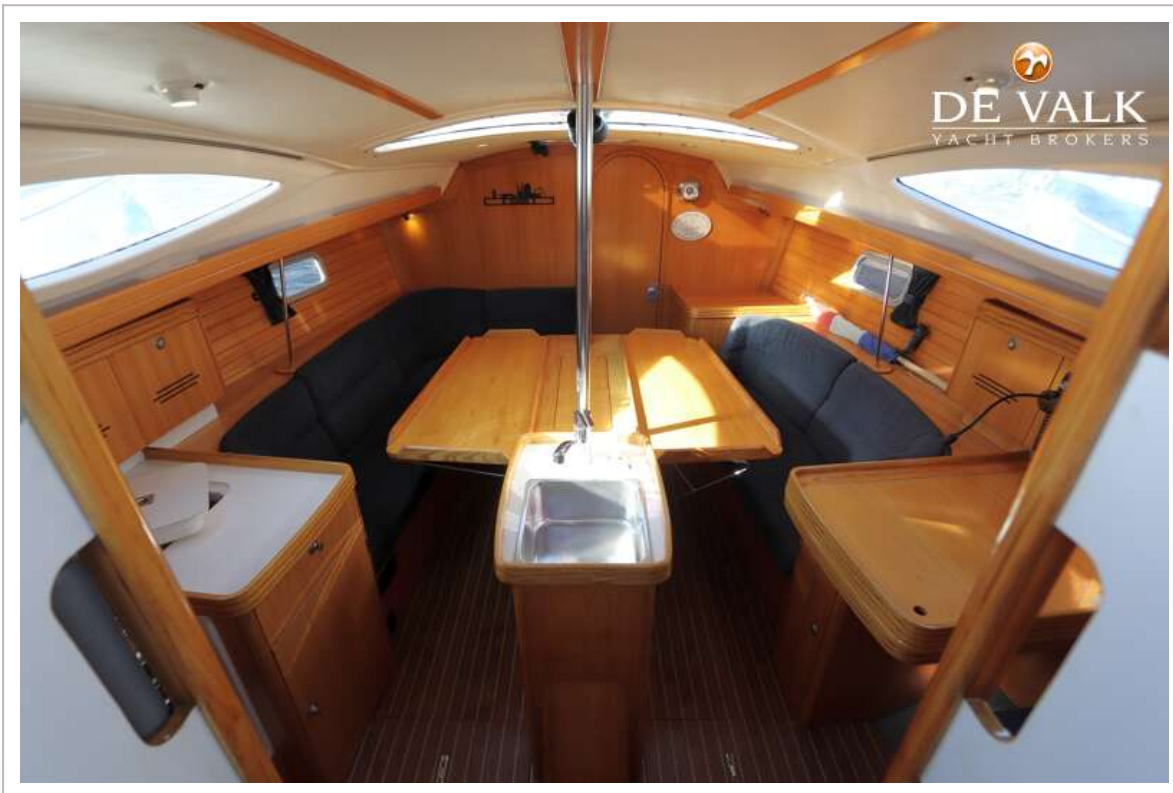
# FEELING 32 DI



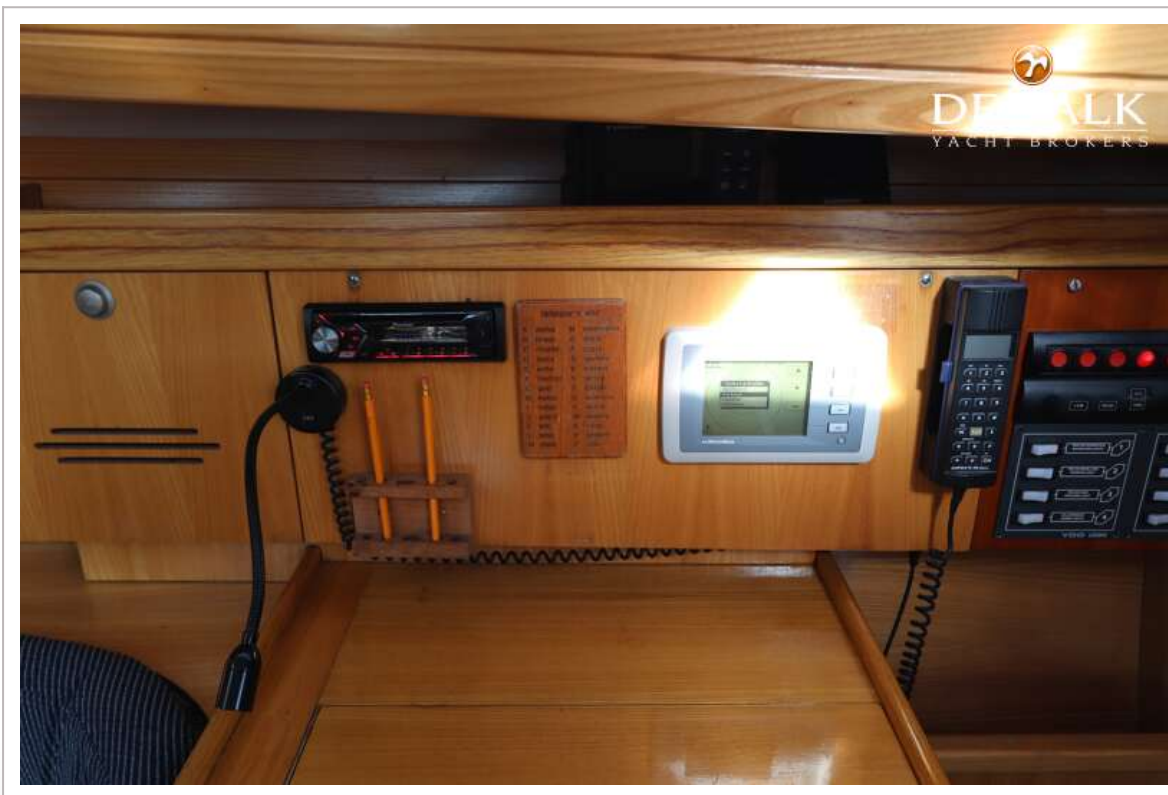
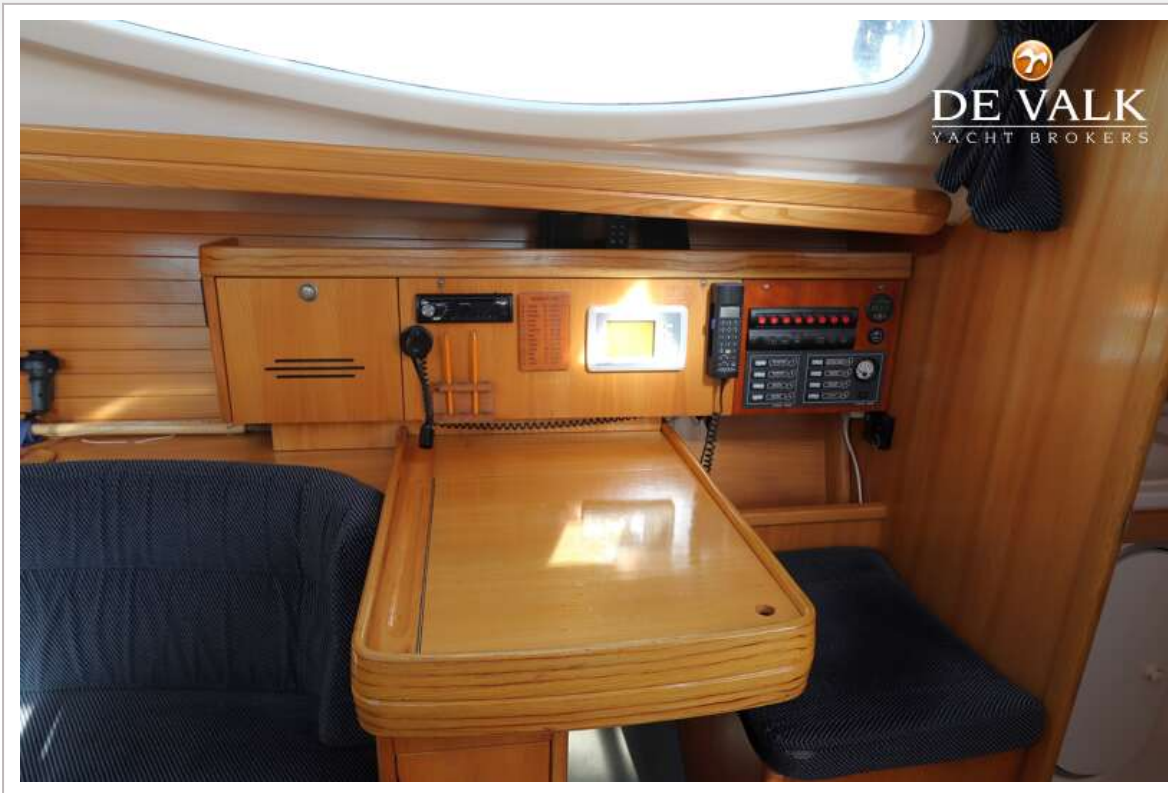
# FEELING 32 DI



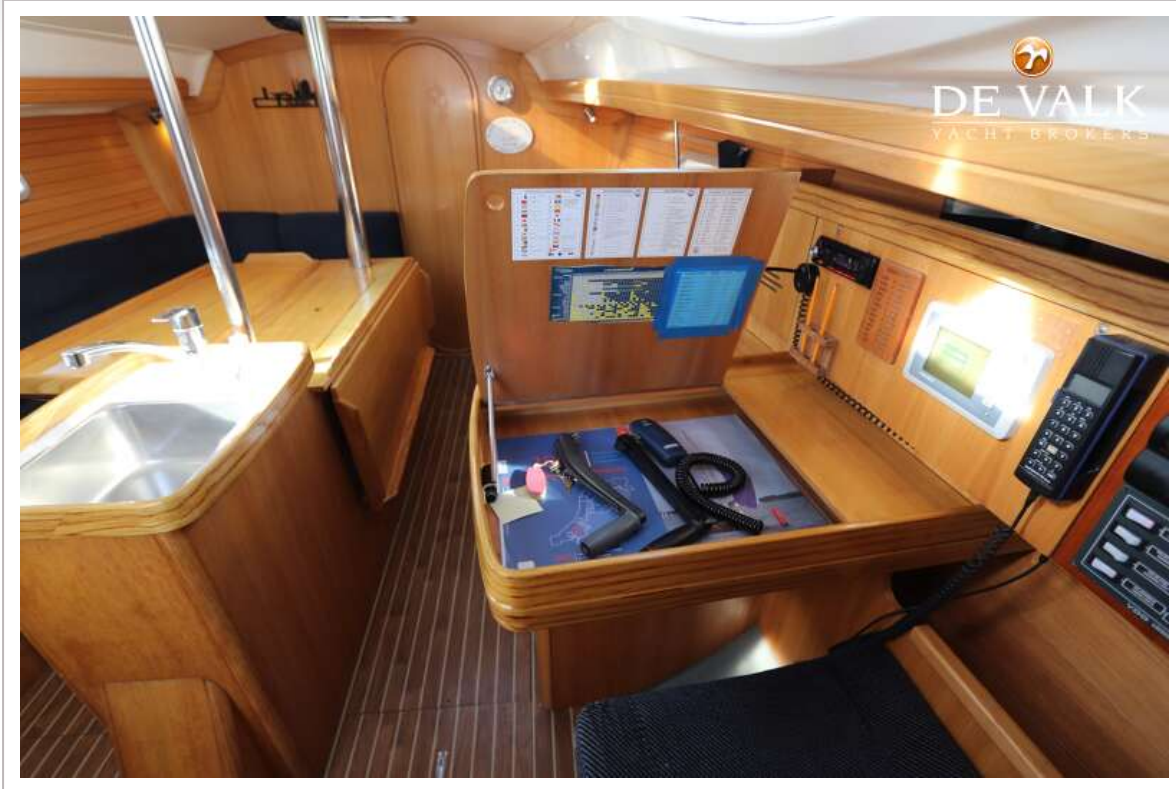
# FEELING 32 DI



# FEELING 32 DI



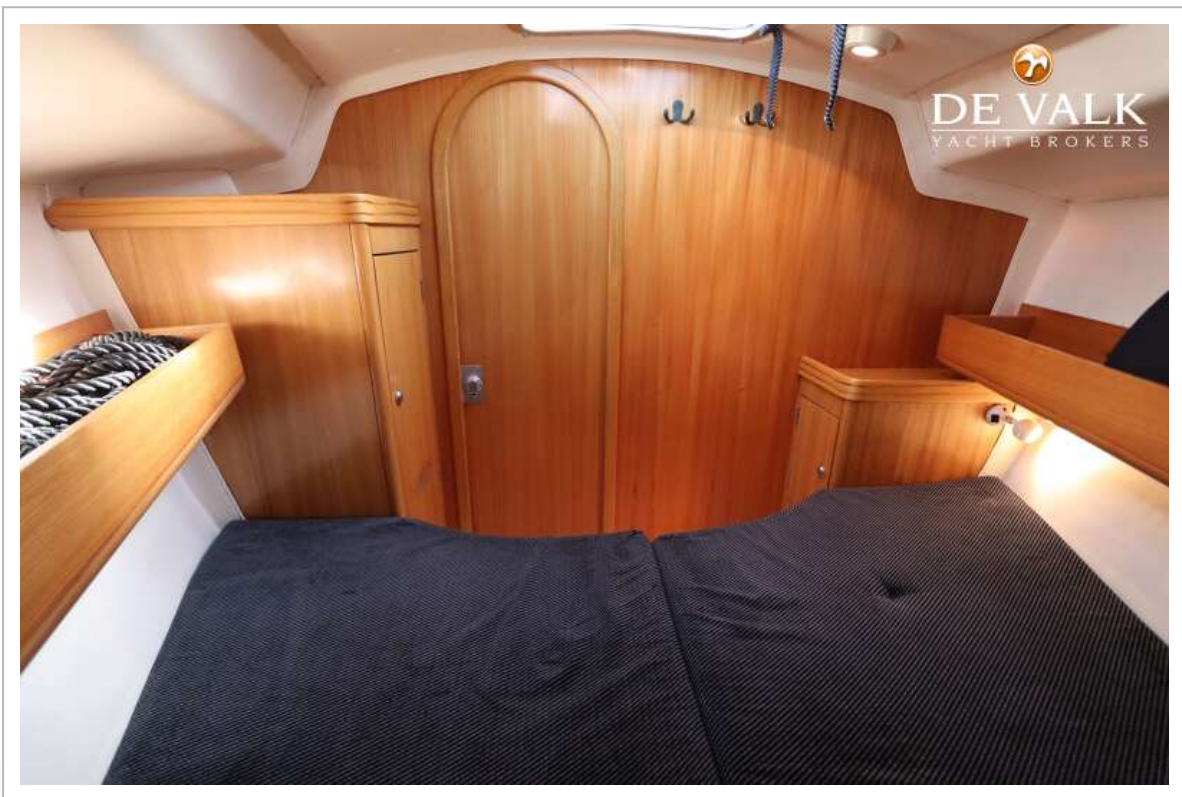
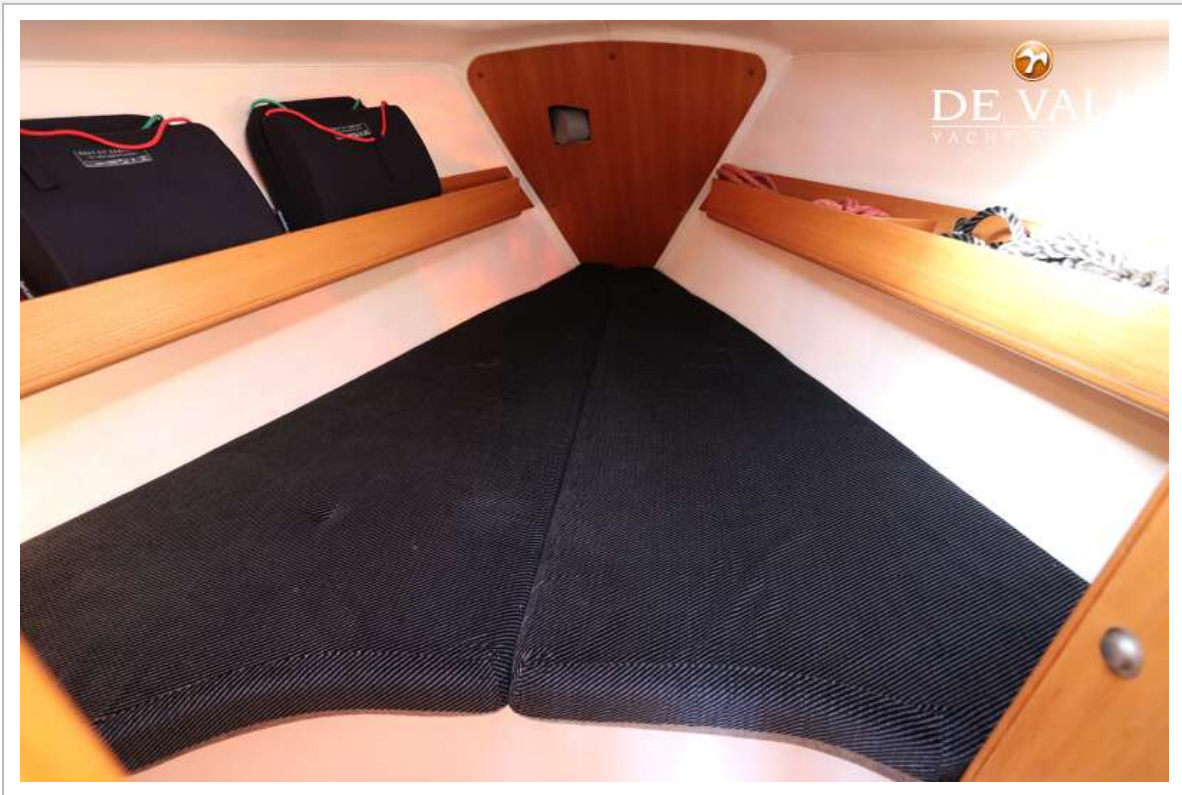
# FEELING 32 DI



# FEELING 32 DI

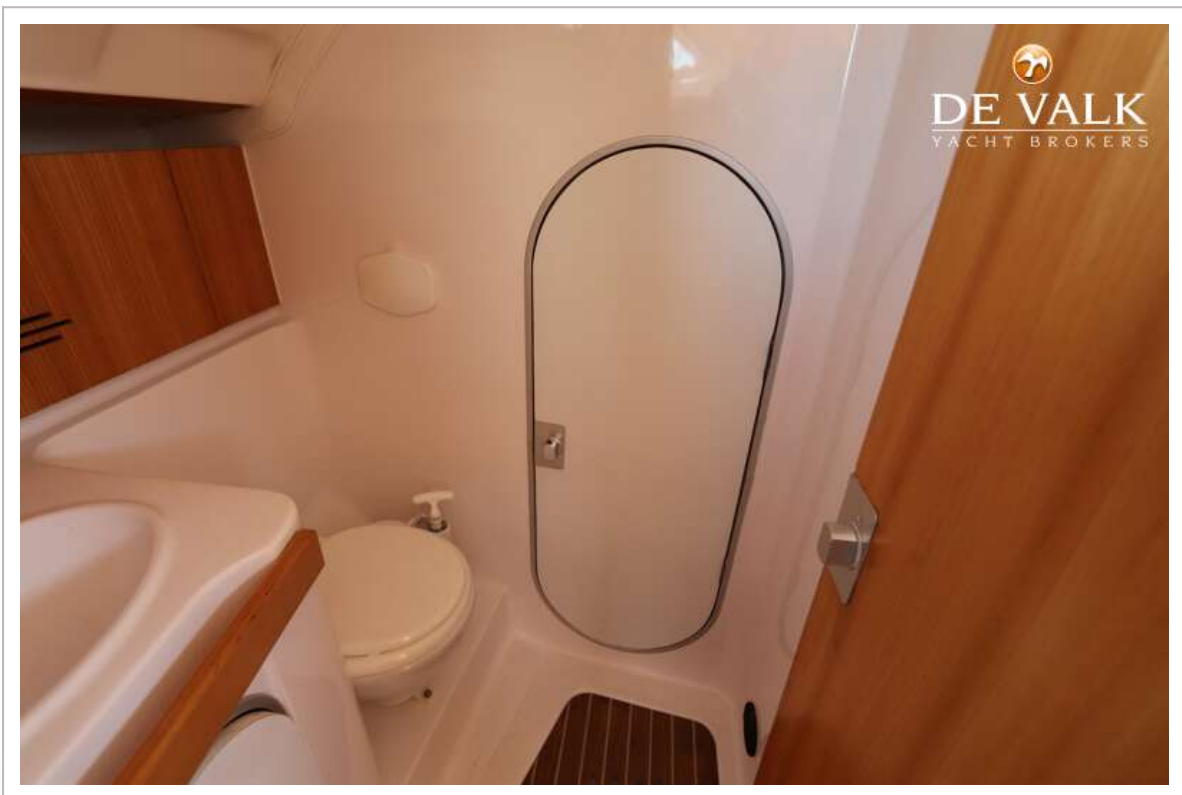
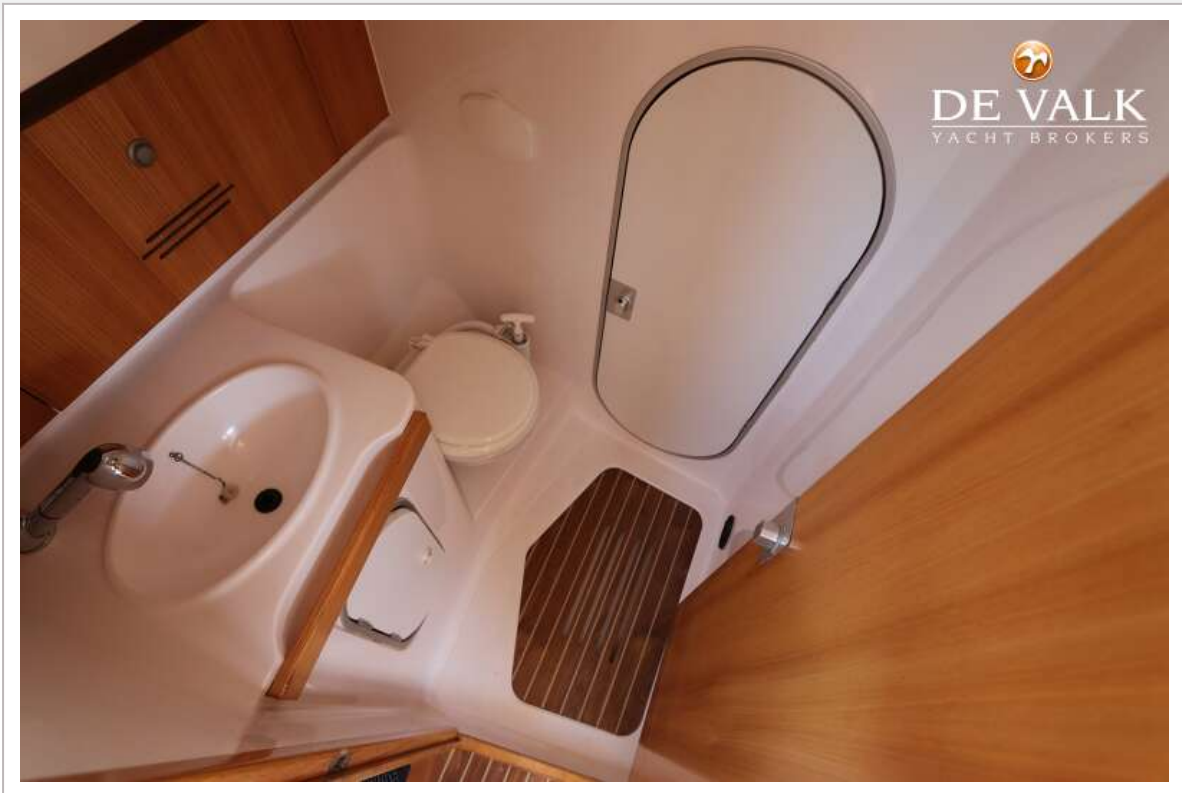


# FEELING 32 DI





# FEELING 32 DI



# FEELING 32 DI



# FEELING 32 DI

