



AQUANAUT MAJESTIC 1300 AC

AQUANAUT MAJESTIC 1300 AC

BROKER'S COMMENTS

Lady Octopus, a straight bow, lots of glass around, curved lines and modern colours are the external features of the Majestic. She was designed according to seller's wishes. It was important that the boat could cruise on all rivers, Lake Constance and in the Mediterranean. She features plenty of interior space, including a generous saloon with living room. Below decks are three large cabins with free-standing double beds, and two bathrooms. She is equipped with an extra heavy-duty engine, bow and stern thruster. This luxurious and contemporary yacht can be viewed in Sneek

Henk Jan Vissia

SPECIFICATIONS

Dimensions	13.15 x 4.50 x 1.15 (m)	Builder	Aquanaut Sneek
Built	2018	Cabins	3
Material	Steel	Berths	6
Engine(s)	1 x Volvo Penta D4-180I-F diesel	Hp/Kw	180.00 (hp), 132.48 (kw)
Asking price	sold (VAT)	Lying	at sales office

CONTACT

Sales office	De Valk Sneek	Telephone	+31 (0)515 42 80 30
Address	Zwolsmanweg 7 8606 KC Sneek NL	E-mail	sneek@devalk.nl

DISCLAIMER

These particulars are given in good faith as supplied but cannot be guaranteed.



AQUANAUT MAJESTIC 1300 AC

GENERAL

Model	AQUANAUT MAJESTIC 1300 AC
Type	motor yacht
LOA (m)	13,15
Beam (m)	4,50
Draft (m)	1,15
Air draft min (m)	3,57
Headroom (m)	2,15
Year built	2018
Builder	Aquanaut Sneek
Country	The Netherlands
Designer	Aquanaut Sneek
Displacement (t)	30
CE norm	B
Hull material	steel
Hull colour	red
Hull thickness (mm)	6
Hull shape	hard chine
Superstructure material	steel
Superstructure (mm)	4 - 6
Rubbing strake	stainless steel
Deck material	steel
Deck finish	synthetic teak
Superstructure deck finish	non-skid paint
Cockpit deck finish	synthetic teak
Antifouling (year)	2023
Dorades	yes
Window material	double glazing Bronze tinted brons getint Bronze gefärbt
Deckhatch	yes
Portholes	yes
Insulation	foam - hull+superstructure / romp+opbouw / Rumpf+Aufbauten



AQUANAUT MAJESTIC 1300 AC

Flybridge suncover	yes
Radar arch	collapsible
Fuel tank (litre)	steel 400
Fuel tank 2 (litre)	steel 400
Level indicator (fuel tank)	yes
Freshwater tank (litre)	stainless steel 400
Level indicator (freshwater)	yes
Blackwater tank (litre)	stainless steel 2x 200
Level indicator (blackwater)	yes
Blackwater tank extraction	deck extraction + pump
Wheel steering	hydraulic
Emergency tiller	yes
More info on hull	The boat has an extended stern platform for easier boarding of a dinghy or bringing supplies on board.
Extra info	yes

ACCOMMODATION

Cabins	3
Berths	6
Interior	beech
Floor	wood
Saloon	yes
Headroom saloon (m)	2,25
Sliding roof	manual
Heating	central hot water Kabola kb 40
Heating 2	electric 220V Webasto
Aft Cabin	yes
Dining room	yes
Convertible berth	yes
Galley	yes
Countertop	granite



AQUANAUT MAJESTIC 1300 AC

Sink	stainless steel
Cooker	ceramic - Siemens, 2 burner pits brenner
Extractor	yes
Gas alarm	yes
Fridge	Coolmatic CRX 140
Hot water system	220V/engine/heating 40 l.
Water pressure system	electrical
Manual and/or foot pump	yes
Crockery	yes
Owners cabin	double bed
Bed length (m)	2,10
Wardrobe	hanging/drawers/shelves
Bathroom	en suite
Toilet	en suite
Toilet system	electric
Wash basin	at the toilet
Shower	en suite
Guest cabin 1	double bed
Bed length (m)	2,10
Wardrobe	hanging and drawers
Bathroom	shared
Toilet	shared
Toilet system	electric
Wash basin	at the toilet
Shower	shared
Guest cabin 2	double bed
Bed length (m)	2,10
Wardrobe	hanging and shelves
Washing machine	yes
Extra info	central hot water heating with radiators in all rooms The rear tent / cockpit tent is heated with an additional separate diesel circulating air heater from Webasto heated.



AQUANAUT MAJESTIC 1300 AC

MACHINERY

No of engines	1
Make	Volvo Penta
Type	D4-180I-F
HP	180
kW	132.48
Fuel	diesel
Year installed	2018
Maximum speed (kn)	13-18
Cruising speed (kn)	8
Consumption (l/hr)	10
Engine hours	917
Engine cooling system	closed keelcooling
Drive	shaft
Shaft seal	yes
Engine controls	electrical
Gearbox	hydraulic
Bowthruster	electric - Vetus 160
Sternthruster	electric - Vetus 160
Exhaust	dry
Propeller type	fixed
Propeller blades	yes
Manual bilge pump	yes
Electric bilge pump	yes
Bilge alarm	yes
Electrical installation	24/220
Generator	No nee nein - voorbereiding vorbereitung prepared
Start battery	1x 200 Ah
Service battery	12 x 2V 750 Ah Whisper Power
Bowthruster battery	2x 240 Ah
Sternthruster battery	same set as the bowthruster



AQUANAUT MAJESTIC 1300 AC

Battery monitor	yes
Battery charger	WhisperPower WP-DC Powercube 24/150
Inverter	WhisperPower AC PowerCube 24/7000
Shorepower	with cable
Stabilizers	No nee nein - voorbereiding vorbereitung prepared

NAVIGATION

Compass	yes
Depth sounder	Raymarine
Windset	Raymarine
VHF	Raymarine RAY 260
VHF handheld	Raymarine
Autopilot	Raymarine
Rudder angle indicator	yes
Radar/GPS/plotter	Raymarine Axiom '12
Electronic chart(s)	yes
Camera	2x engine room + 1x stern
Navigation lights	yes

EQUIPMENT

Fixed windscreen	yes
Sprayhood	yes
Cockpit cover	yes
Cockpit cushions	yes
Cockpit table	yes
Bathing platform	yes
Boarding ladder	stainless steel
Deck shower	yes
Anchor	Jambo 40 kg
Anchor 2	Jambo 15 kg
Anchor chain	50 m.



AQUANAUT MAJESTIC 1300 AC

Windlass	electrical MaxWell
Davits	stainless steel
Davits controls	manual
Sea railing	stainless steel
Rope cutter	yes
Wiper	yes
Horn	electric
Fenders	yes
Mooring lines	yes
TV	yes
TV receiver	yes
Radio	yes
Fire extinguisher	yes



AQUANAUT MAJESTIC 1300 AC



AQUANAUT MAJESTIC 1300 AC



AQUANAUT MAJESTIC 1300 AC



AQUANAUT MAJESTIC 1300 AC



AQUANAUT MAJESTIC 1300 AC



AQUANAUT MAJESTIC 1300 AC



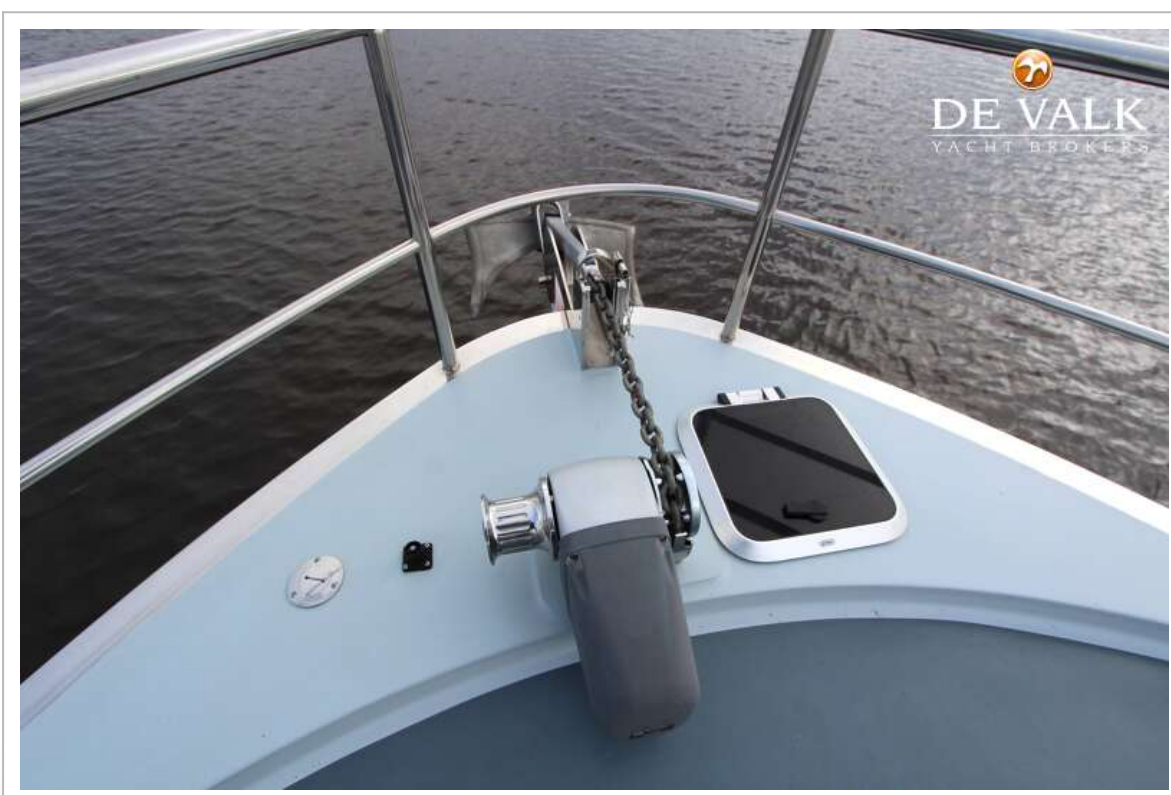
AQUANAUT MAJESTIC 1300 AC



AQUANAUT MAJESTIC 1300 AC



AQUANAUT MAJESTIC 1300 AC



AQUANAUT MAJESTIC 1300 AC



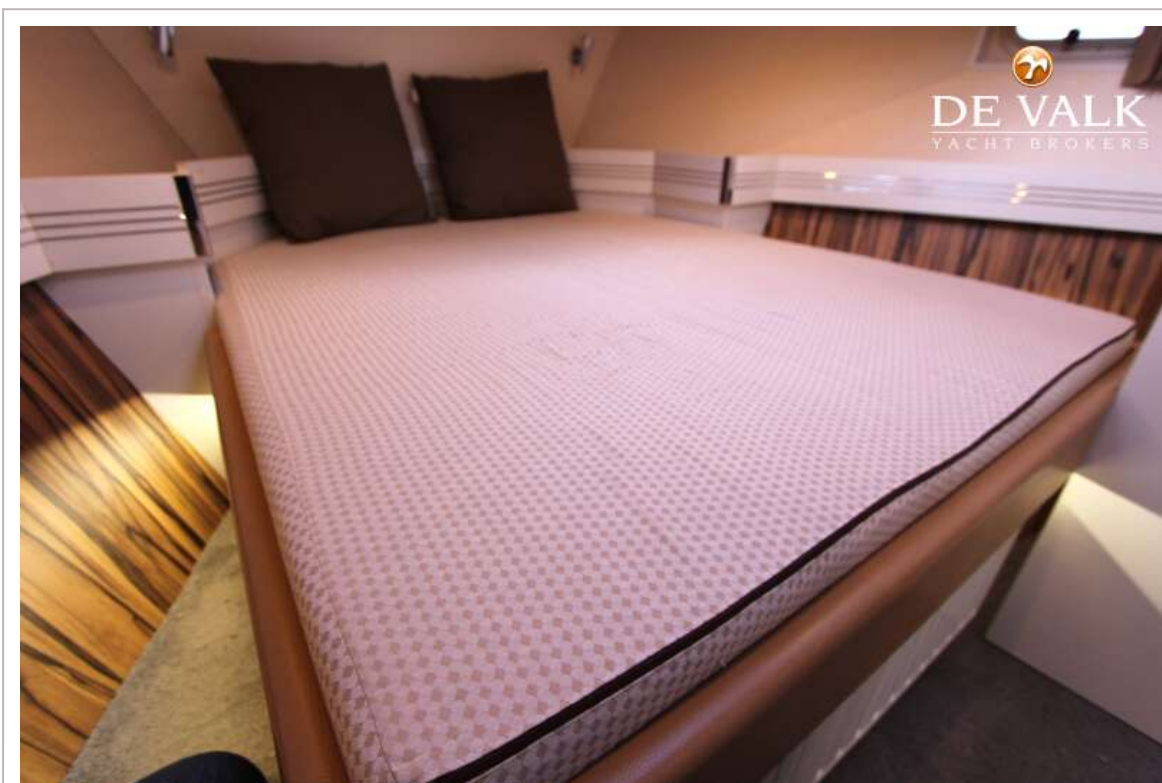
AQUANAUT MAJESTIC 1300 AC



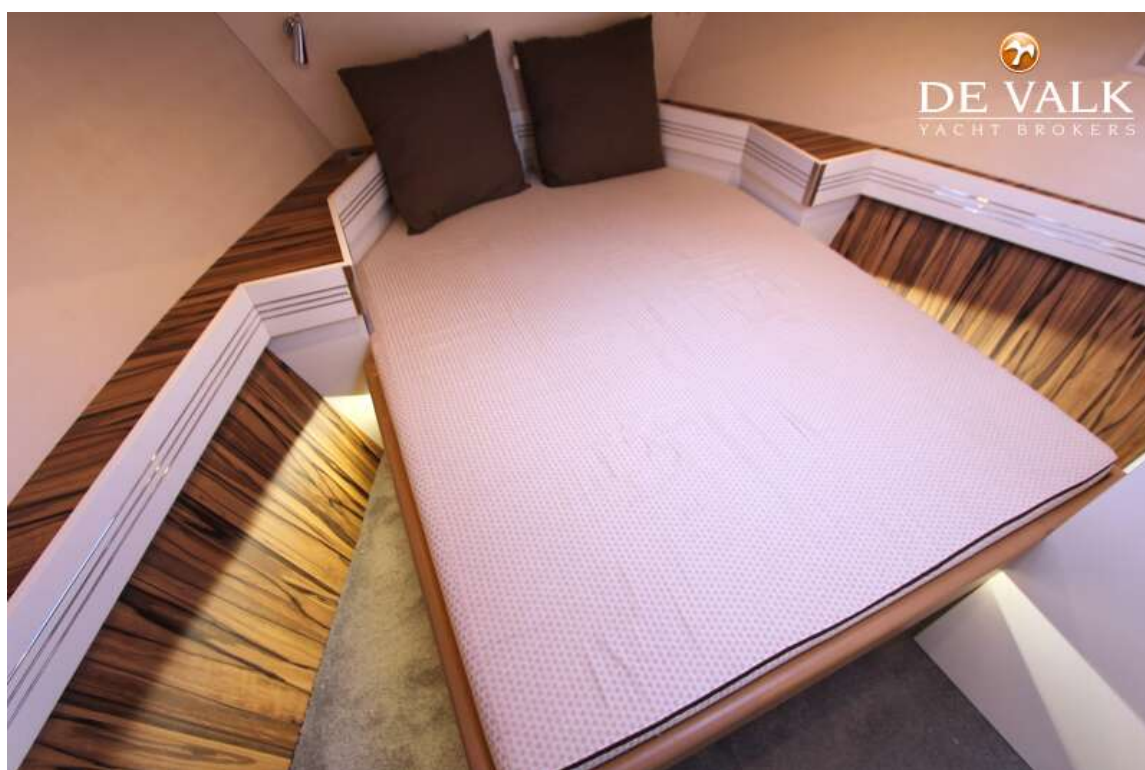
AQUANAUT MAJESTIC 1300 AC



AQUANAUT MAJESTIC 1300 AC



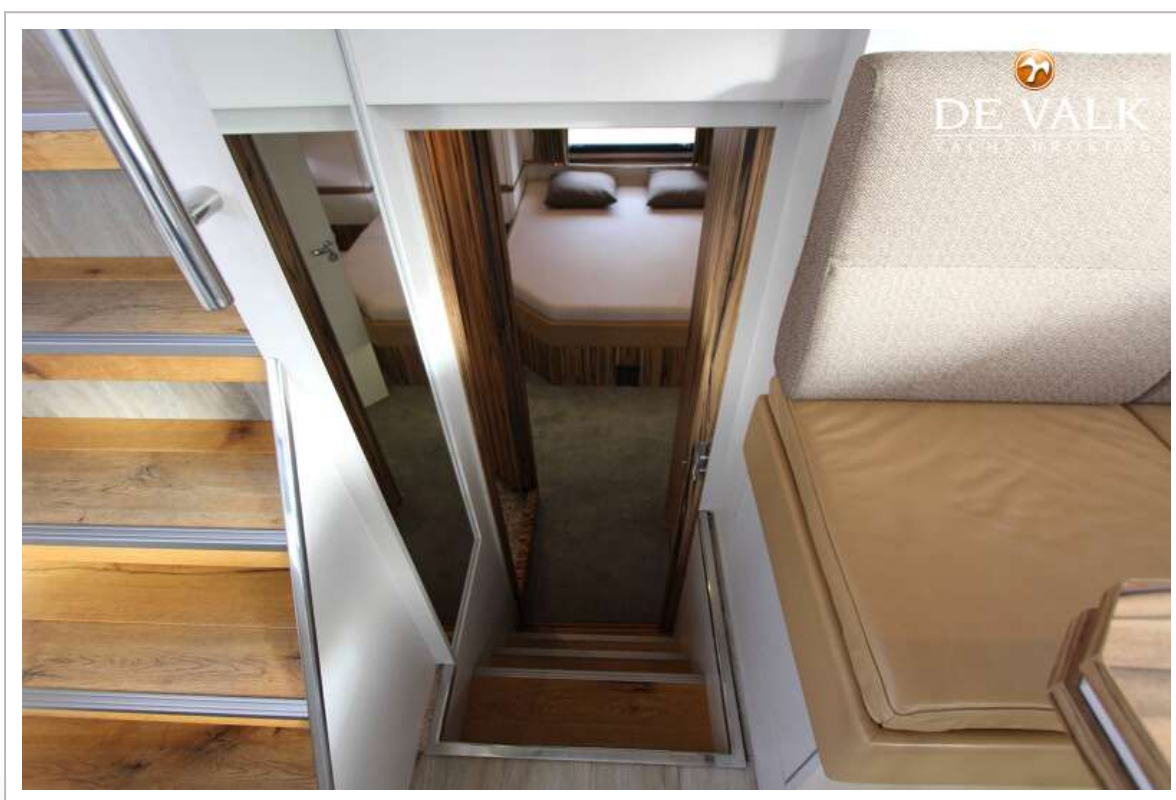
AQUANAUT MAJESTIC 1300 AC



AQUANAUT MAJESTIC 1300 AC



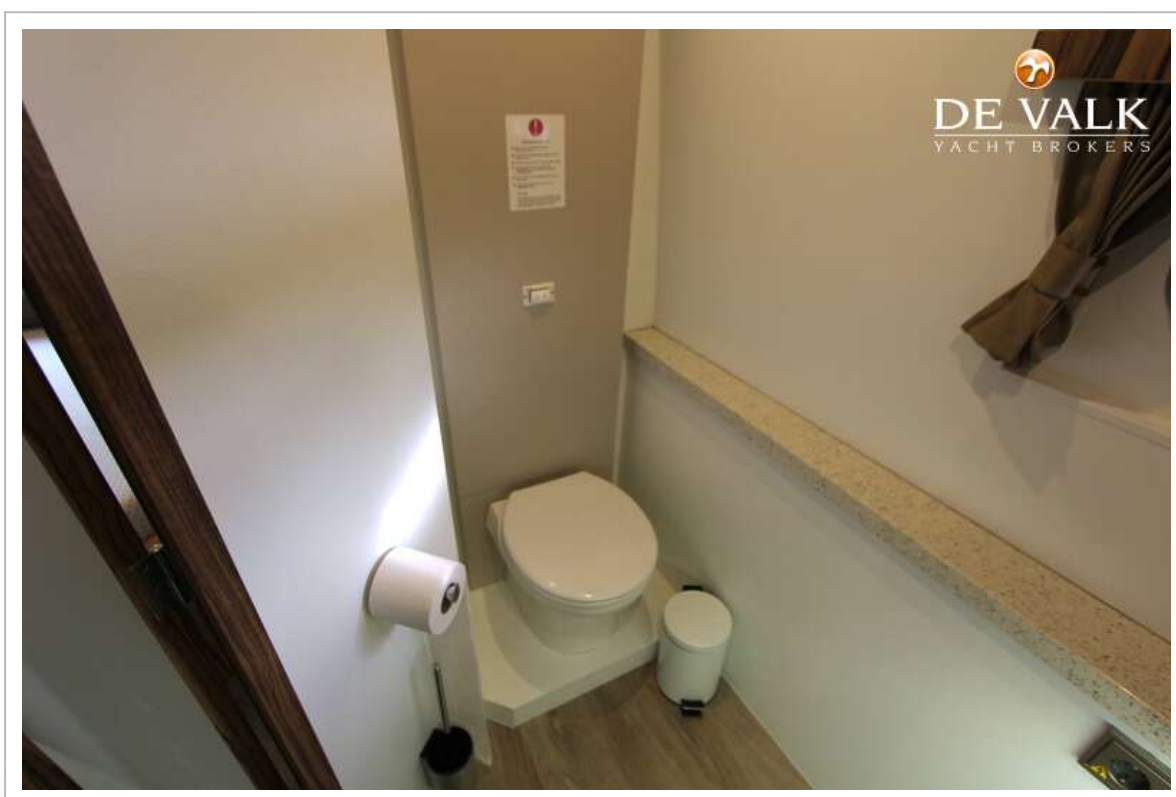
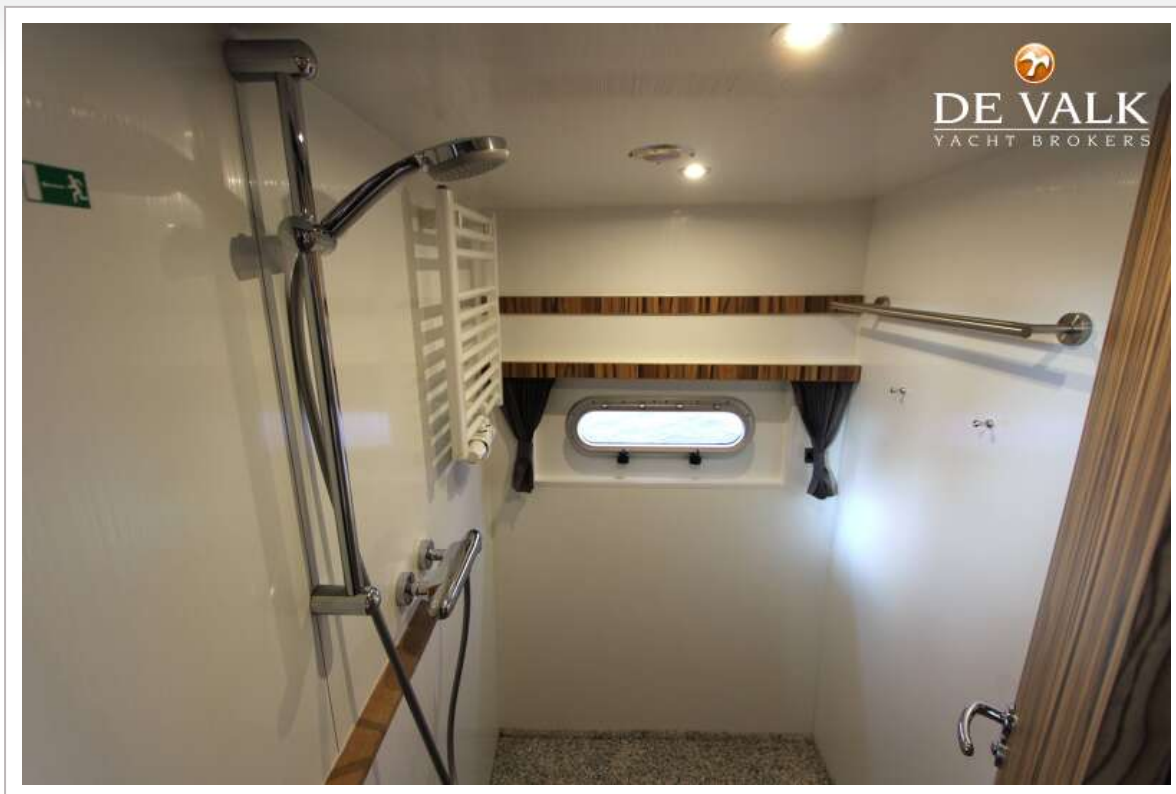
AQUANAUT MAJESTIC 1300 AC



AQUANAUT MAJESTIC 1300 AC



AQUANAUT MAJESTIC 1300 AC



AQUANAUT MAJESTIC 1300 AC

