



DE VALK
YACHT BROKERS



LAGOON 380 S2



DE VALK
YACHT BROKERS

LAGOON 380 S2

BROKER'S COMMENTS

This catamaran Lagoon 380 S2 is from 2015 and is in very good condition, both in appearance and interior and technology. Since 2021 she has undergone the necessary renovations. This type of Lagoon was designed by Van Peteghem & Lauriot-Prévost and has been built since 2000 and is still a very popular catamaran. Excellent sailing characteristics and sailing properties, the engines are fine. The current owner has made beautiful trips with it in the Mediterranean. She is now for sale in Southern Italy / Sicily. Would you like to know more? Please feel free to contact us.

Ger Bayens

SPECIFICATIONS

Dimensions	11.60 x 6.50 x 1.15 (m)	Builder	Lagoon
Built	2015	Cabins	4
Material	GRP	Berths	8
Engine(s)	2 x Yanmar 3YM30 diesel	Hp/Kw	2 x 30.00 (hp), 22.08 (kw)
Asking price	€ 239.000 (VAT Paid)	Lying	Mediterranean

CONTACT

Sales office	De Valk Thuishaven	Telephone	+31 35 5829042
Address	Peperstraat 7 1411 PX Naarden NL	E-mail	thuishaven@devalk.nl

DISCLAIMER

These particulars are given in good faith as supplied but cannot be guaranteed.



GENERAL

Model	LAGOON 380 S2
Type	catamaran sailing yacht
LOA (m)	11,60
Beam (m)	6,50
Draft (m)	1,15
Year built	2015
Launched	2015
Builder	Lagoon
Country	France
Designer	Van Peteghem & Lauriot Prévost
Displacement (t)	7,3
CE norm	A
Hull material	GRP
Hull colour	white
Hull shape	V-shaped hull
Keel type	fin keel
Superstructure material	GRP
Deck material	GRP
Deck finish	non-skid moulded in
Cockpit deck finish	teak
Antifouling (year)	2022
Window material	polycarbonate
Deckhatch	yes
Portholes	yes
Fuel tank (litre)	stainless steel 100 ltr.
Fuel tank 2 (litre)	stainless steel 100 ltr.
Level indicator (fuel tank)	yes
Freshwater tank (litre)	polyethylene 2x 300 ltr.
Level indicator (freshwater)	not functioning
Blackwater tank (litre)	polyethylene 80 ltr.



Wheel steering

cable steering

ACCOMMODATION

Cabins	4
Berths	8
Interior	American maple
Layout	4 cabins / 2 bathrooms / Saloon / galley
Floor	woodprint
Deck saloon	yes
Headroom saloon (m)	2,10
Navigation center	yes
Chart table	yes
Dinette	yes
Dinette to convert into berth	big double berth
Sliding door to cockpit	yes
Galley	yes
Countertop	corian
Sink	stainless steel 2x
Cooker	calor gas 3-pits
Oven	yes
Fridge	with a freezer compartment 1x in the galley, 1x Dometic Fridge/Freezer CFX3-35 35 l (2022)
Hot water system	220V + engine
Water pressure system	electrical New drink water pump (2022)
Ice maker	(2022)
Coffee maker	Nespresso machine (2022)
Crockery	yes
Owners cabin	double bed
Bed length (m)	2,00 x 1,60
Wardrobe	hanging and shelves
Bathroom	shared l



Toilet	shared
Toilet system	electric
Wash basin	in the bathroom
Shower	shared
Guest cabin 1	double bed
Bed length (m)	2,00 x 1,60
Wardrobe	hanging and shelves
Bathroom	shared II
Toilet	shared
Toilet system	electric
Wash basin	in the bathroom
Guest cabin 2	double bed
Bed length (m)	200 x 1,60 - 0,90
Wardrobe	hanging and shelves
Guest cabin 3	double bed
Bed length (m)	200 x 1,60 - 0,90
Wardrobe	hanging and shelves

MACHINERY

No of engines	2
Make	Yanmar
Type	3YM30
HP	30
kW	22.08
Fuel	diesel
Year installed	2015
Year of overhaul	Engines are fully serviced (2023) Sail drives serviced 2023 New alternator (120A) (2023) No overhaul but full service
Maximum speed (kn)	7,5
Cruising speed (kn)	6
Engine hours	4400



Engine cooling system	freshwater heat exchanger
Drive	sail-drive
Saildrive seal	(2023)
Engine controls	bowden cable
Gearbox	mechanical
Propeller type	fixed
Propeller blades	2
Manual bilge pump	yes
Electric bilge pump	2x
Electrical installation	12/230V
Batteries	5x
Start battery	2x
Service battery	3x 180 Ah Lead-acid Batteries (2022)
Battery monitor	yes
Battery charger/inverter	Victron Phoenix12/2000
Solar panel	700W Victron solar panels (2022-2023)
Diode battery combiners	yes
Watermaker	Schenker Zen30 (2022)
Extra info	Victron smart shunt (2022)
Extra info	Yanmar engines have a year number of November 2013, but were installed as new in 2015

NAVIGATION

Compass	yes
Depth sounder	yes
Depth sounder/log	B & G
Windset	B & G
VHF	with wireless handset B & G VHF
Autopilot	B & G
Plotter/GPS	B & G
AIS transceiver	Emtrack AIS transceiver with WIFI (2022)



EQUIPMENT

Fixed hardtop	yes
Bimini	in GRP
Cockpit cushions	(2023)
Cockpit table	yes
Bathing platform	A swimming platform at the back of both hulls 2x
Boarding ladder	yes
Gangway	stainless steel / teak
Deck shower	hot and cold
Anchor	Delta 25 Kg
Anchor chain	80 Mtr 10mm.
Anchor 2	Fortress
Windlass	electrical Quick 2000W Windlass control at helm
Capstan	yes
Dinghy	Kapa Tender 2,70 Mtr (2022)
Outboard	6 HP Tohatsu (2022)
Outboard support	yes
Davits	stainless steel
Davits controls	manual
Sea railing	wire
Grab rail (superstructure)	stainless steel
Pushpit	yes
Pulpit	yes
Life raft (pers)	10
Last life raft survey	2021
Lifejackets	yes
Clearview window	yes
Fenders	yes
Mooring lines	yes
Spare parts	yes
Tools	yes



Clock - barometer	yes
Fire extinguisher	yes
Latest extinguisher survey	2022
Extra info	Paddle board (2022)
Extra info	fans
Extra info	New trampoline (2022)

RIGGING

Rigging	cat-rig
Standing rigging	wire
Brand mast	Seldén
Material mast	aluminium
Spreaders	1 set
Mainsail	square head INCIDENCE (2015)
Mainsail cover	+ Lazy Jack's
Battcars	yes
Fully battened mainsail	yes
Genoa	INCIDENCE (2015)
Genoa furler	Facnor
Reefing System	slabreefing 2 reefs
Primary sheet winch	1x Harken ST
Multifunctional winches	halyard/sheet winches 1x Harken



LAGOON 380 S2



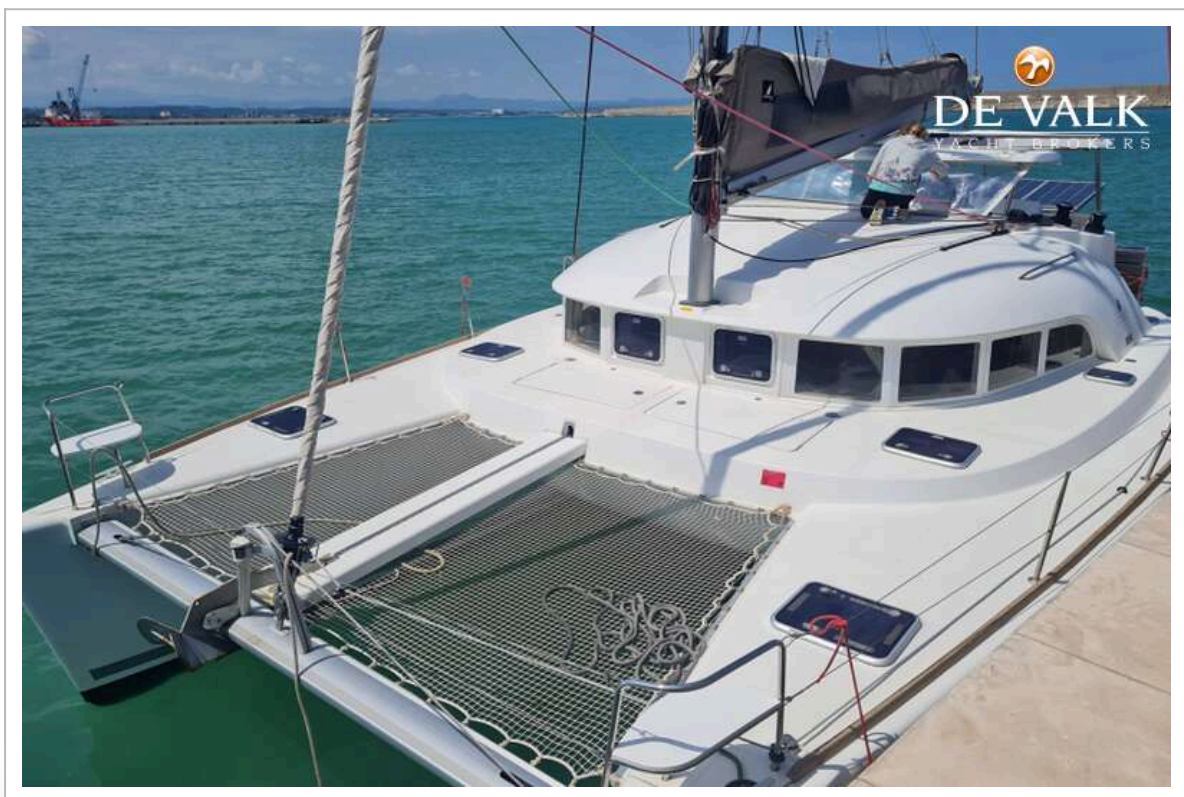
LAGOON 380 S2



LAGOON 380 S2



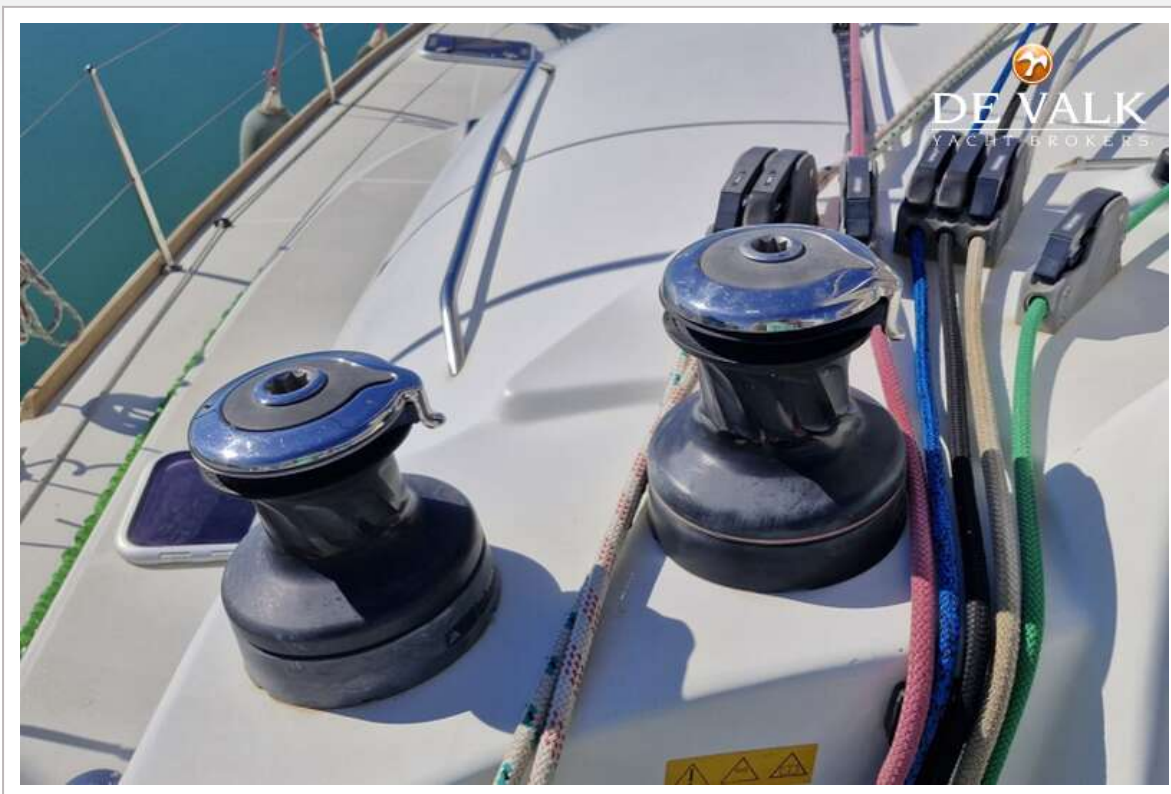
LAGOON 380 S2



LAGOON 380 S2



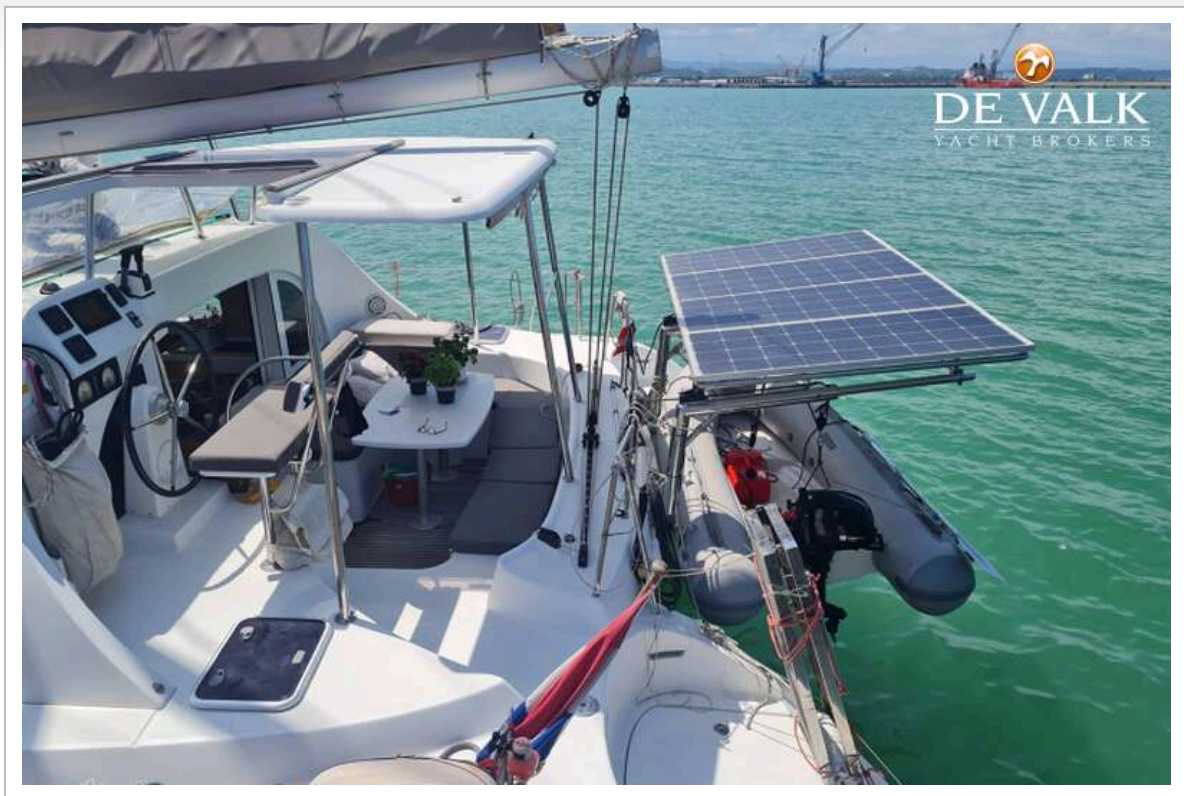
LAGOON 380 S2

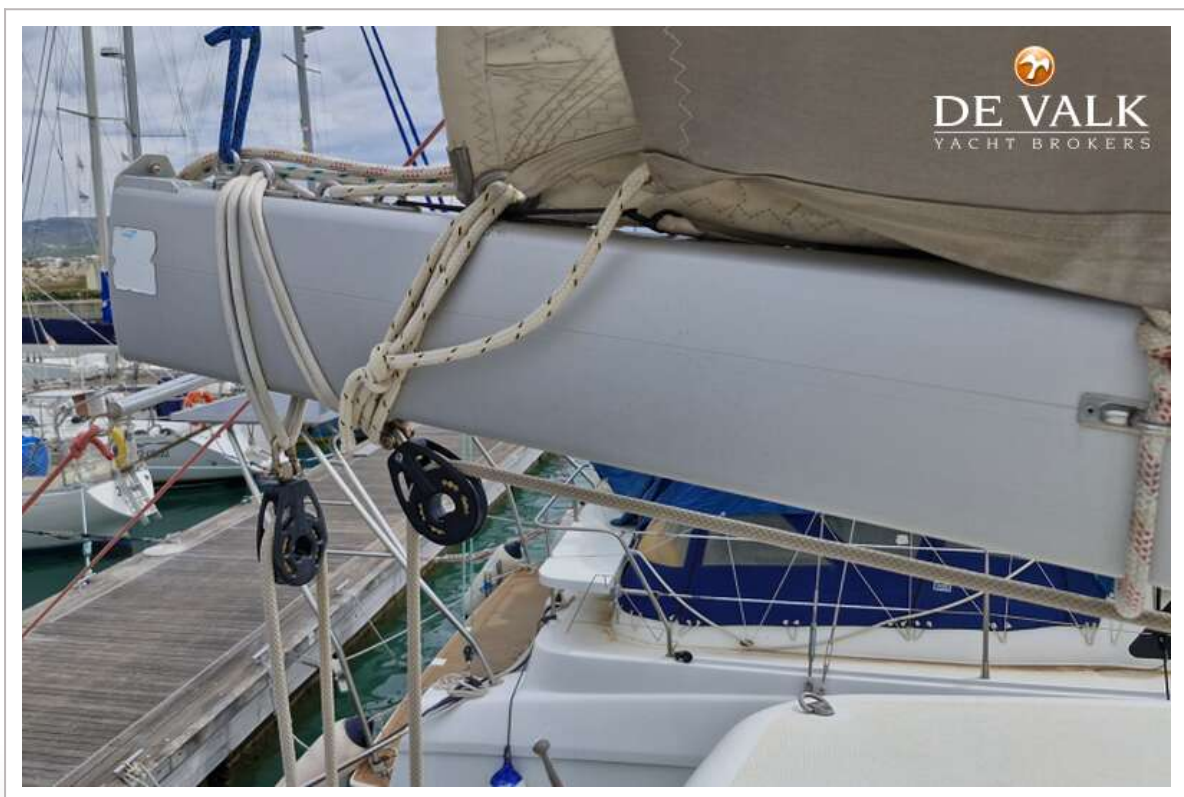


LAGOON 380 S2



LAGOON 380 S2





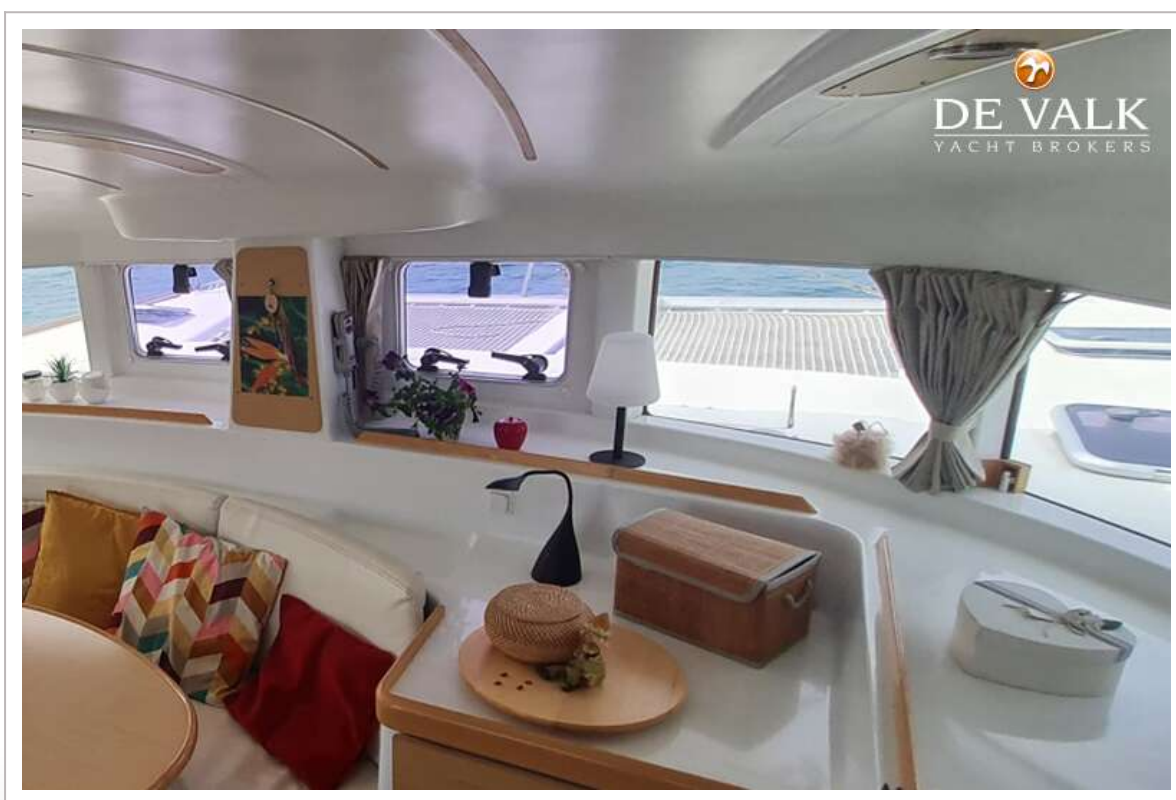
LAGOON 380 S2



LAGOON 380 S2

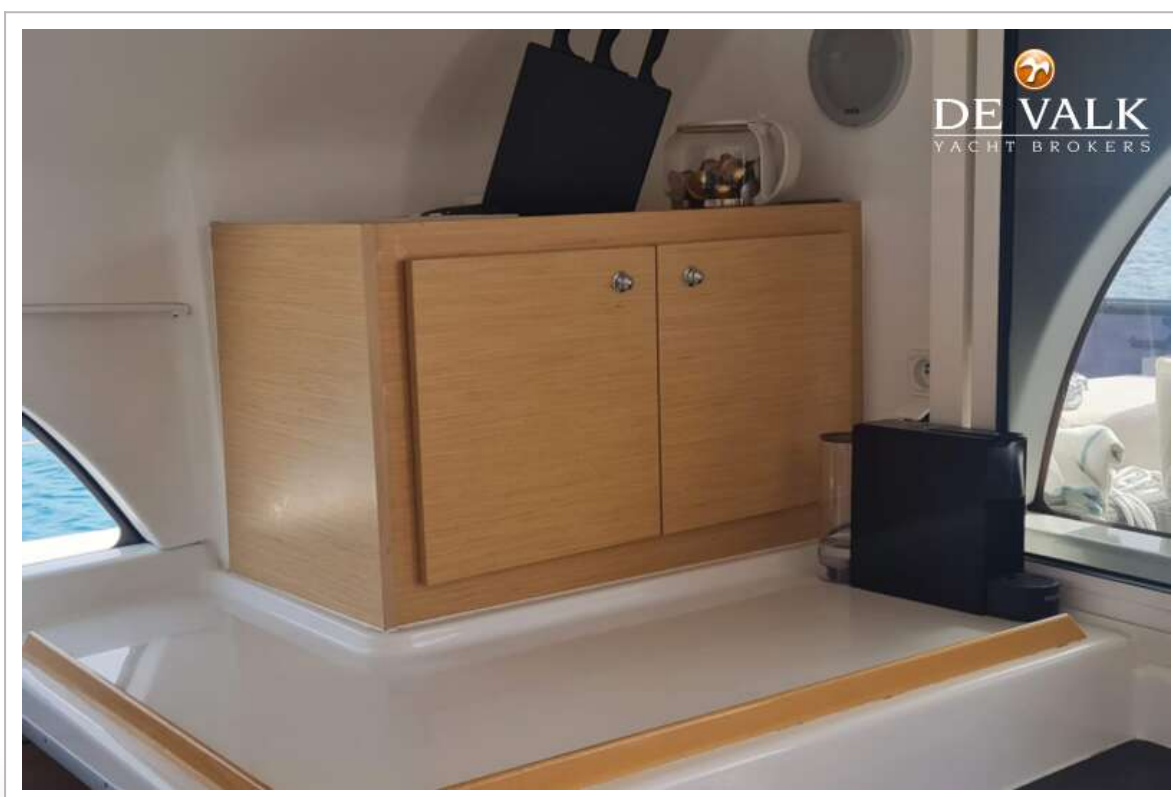


LAGOON 380 S2



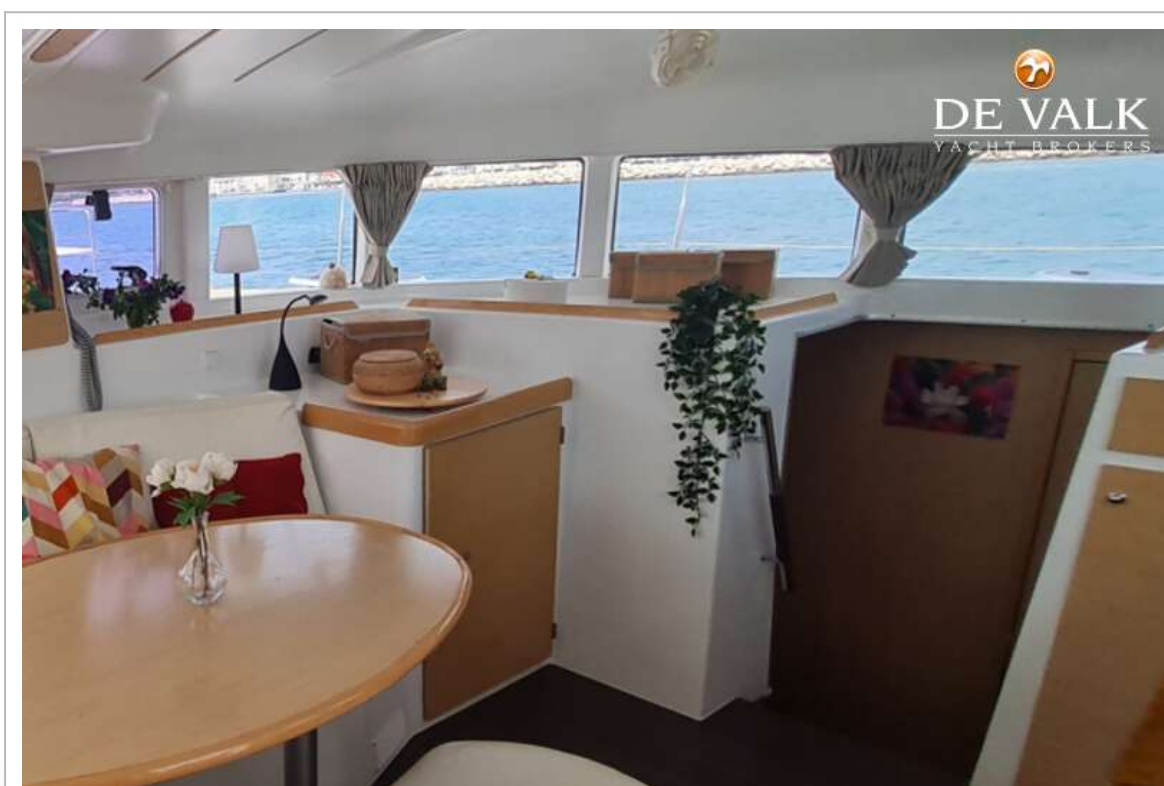
LAGOON 380 S2



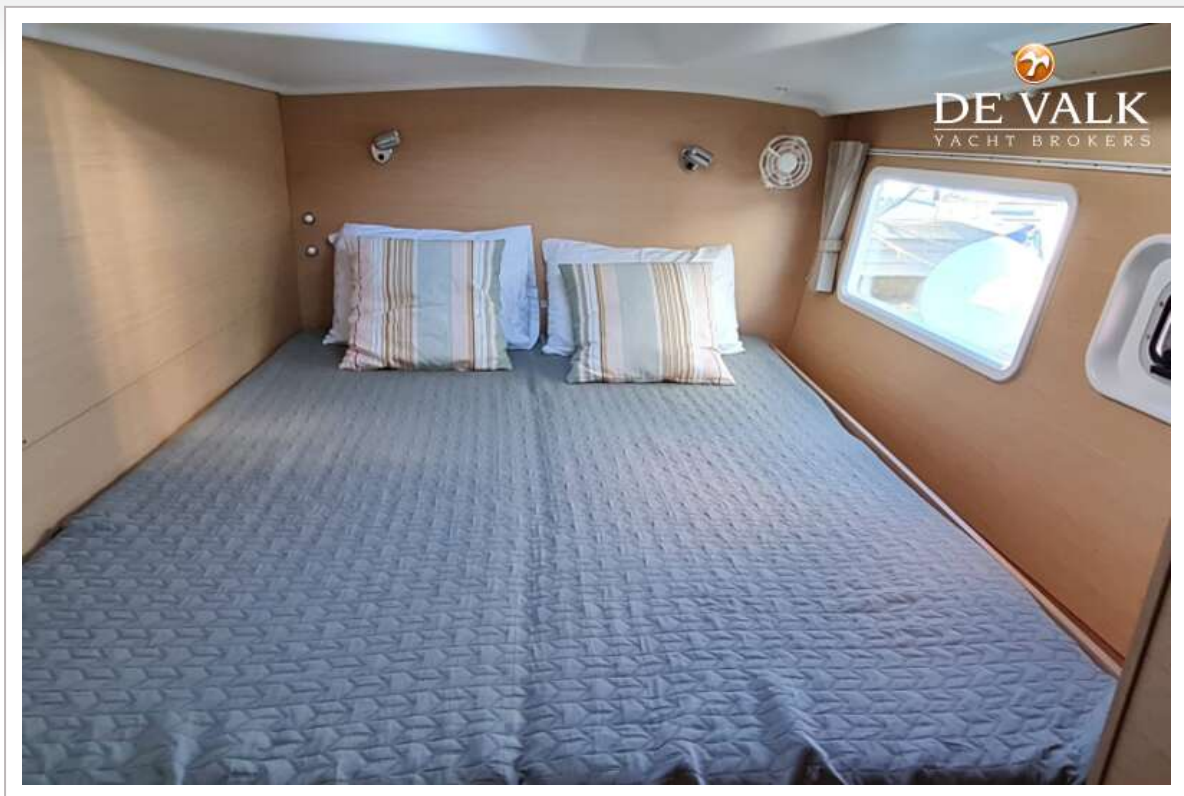




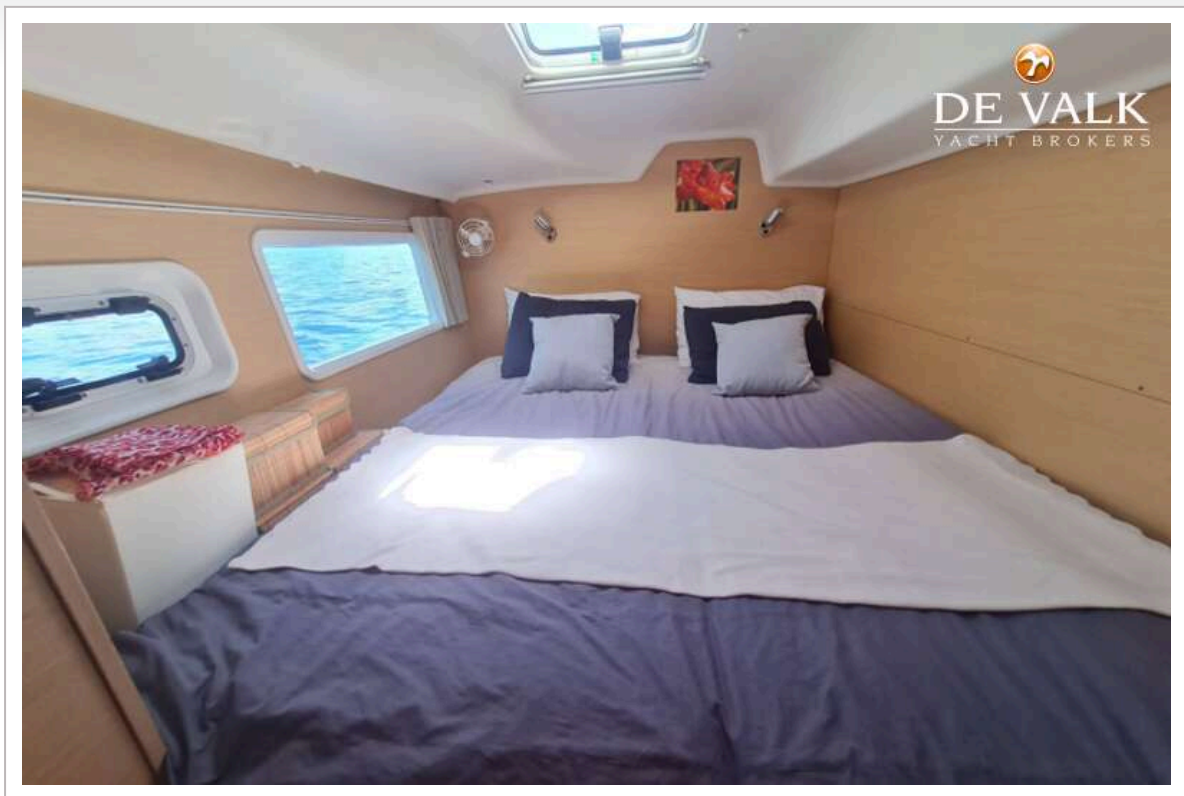
LAGOON 380 S2



LAGOON 380 S2

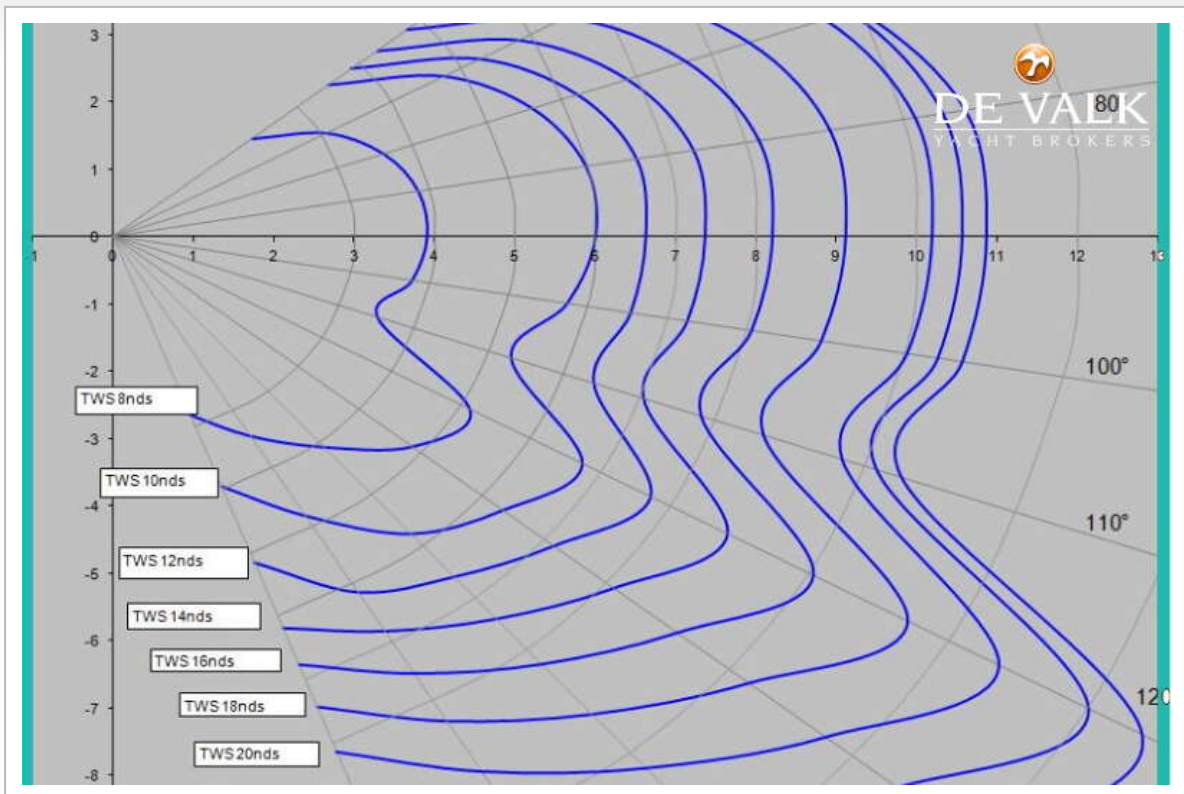


LAGOON 380 S2





LAGOON 380 S2



LAGOON 380 S2



