



DE VALK  
YACHT BROKERS



NOORDKAPER 34



DE VALK  
YACHT BROKERS

## BROKER'S COMMENTS

This Noordkaper 34, built by W. Visser in Zwartsluis and designed by Martin Bekebrede, has a very reliable and safe hull. This ship is suitable for all Dutch waters, but is also certainly a safe and reliable seaworthy ship that is excellent for longer sailing trips to for example, Scandinavia, the Baltic sea or France. She has a good deck layout, a deep cockpit and a full bilged hull, typically recognisable as a Bekebrede design. She is available for viewing 7 days a week at our sales marina.

*Reinier van der Wolf*

## SPECIFICATIONS

<b>Dimensions</b>	10.80 x 3.45 x 1.45 (m)	<b>Builder</b>	W. Visser, Zwartsluis
<b>Built</b>	1996	<b>Cabins</b>	1
<b>Material</b>	Steel	<b>Berths</b>	4
<b>Engine(s)</b>	1 x Vetus Deutz D 4.29 diesel	<b>Hp/Kw</b>	65.00 (hp), 47.84 (kw)
<b>Asking price</b>	sold (VAT )	<b>Lying</b>	elsewhere / Not at sales office

## CONTACT

<b>Sales office</b>	De Valk Monnickendam B.V.	<b>Telephone</b>	+31 (0)299 65 63 50
<b>Address</b>	Hoogedijk 6 1145 PM Katwoude NL	<b>E-mail</b>	monnickendam@devalk.nl

## DISCLAIMER

These particulars are given in good faith as supplied but cannot be guaranteed.



## GENERAL

<b>Model</b>	NOORDKAPER 34
<b>Type</b>	sailing yacht
<b>LOA (m)</b>	10,80
<b>Beam (m)</b>	3,45
<b>Draft (m)</b>	1,45
<b>Air draft (m)</b>	12,50
<b>Headroom (m)</b>	2,00
<b>Year built</b>	1996
<b>Builder</b>	W. Visser, Zwartsluis
<b>Country</b>	The Netherlands
<b>Designer</b>	Martin Bekebrede
<b>Displacement (t)</b>	12
<b>Ballast (tonnes)</b>	lead - 3 t.
<b>Hull material</b>	steel
<b>Hull colour</b>	red
<b>Hull thickness (mm)</b>	5 mm
<b>Hull shape</b>	full bilged
<b>Keel type</b>	long keel
<b>Superstructure material</b>	steel
<b>Superstructure (mm)</b>	4 mm
<b>Deck plate thickness (mm)</b>	5 mm
<b>Rubbing strake</b>	rubber
<b>Deck material</b>	steel
<b>Deck finish</b>	non-skid paint
<b>Superstructure deck finish</b>	paint
<b>Cockpit deck finish</b>	teak
<b>Antifouling (year)</b>	2021
<b>Window frame</b>	aluminium
<b>Window material</b>	tempered glass - Gebo Stalite
<b>Deckhatch</b>	3



<b>Portholes</b>	aluminium - 8 X
<b>Insulation</b>	glasswool
<b>Fuel tank (litre)</b>	steel - ca. 300 L
<b>Fuel daytank (litre)</b>	polyethylene - ca. 70 L
<b>Freshwater tank (litre)</b>	stainless steel - 2 x ca. 90 L
<b>Blackwater tank (litre)</b>	- ca. 70 L
<b>Blackwater tank extraction</b>	deck extraction + pump
<b>Wheel steering</b>	hydraulic
<b>Inside helm position</b>	yes
<b>Outside helm position</b>	mechanical
<b>Tiller</b>	yes
<b>More info on paintwork</b>	2 components

## ACCOMMODATION

<b>Cabins</b>	1
<b>Berths</b>	4
<b>Interior</b>	mahogany
<b>Floor</b>	wood
<b>Open cockpit</b>	yes
<b>Pilot house/deck saloon</b>	yes
<b>Headroom saloon (m)</b>	2 m
<b>Heating</b>	stove diesel
<b>Navigation center</b>	yes
<b>Chart table</b>	yes
<b>Dinette</b>	yes
<b>Sliding door to cockpit</b>	yes
<b>Galley</b>	yes
<b>Countertop</b>	wood
<b>Sink</b>	stainless steel
<b>Cooker</b>	calor gas
<b>Oven</b>	yes



<b>Fridge</b>	yes
<b>Hot water system</b>	220V + engine
<b>Water pressure system</b>	electrical
<b>Owners cabin</b>	v-bed
<b>Bed length (m)</b>	2.20 m
<b>Wardrobe</b>	hanging/drawers/shelves
<b>Bathroom</b>	shared
<b>Toilet</b>	shared
<b>Toilet system</b>	electric
<b>Wash basin</b>	in the bathroom
<b>Shower</b>	shared
<b>Extra info</b>	No guest cabin, but 2 berths in wheelhouse Conversion table

## MACHINERY

<b>No of engines</b>	1
<b>Make</b>	Vetus Deutz
<b>Type</b>	D 4.29
<b>HP</b>	65
<b>kW</b>	47.84
<b>Fuel</b>	diesel
<b>Year installed</b>	1999
<b>Year of overhaul</b>	Technical major maintenance Okt. 2021
<b>Maximum speed (kn)</b>	7
<b>Cruising speed (kn)</b>	5
<b>Consumption (l/hr)</b>	2
<b>Engine cooling system</b>	freshwater heat exchanger
<b>Drive</b>	shaft
<b>Shaft seal</b>	Water lubrication
<b>Engine controls</b>	bowden cable
<b>Gearbox</b>	mechanical
<b>Bowthruster</b>	electric



<b>Exhaust</b>	watercooled
<b>Propeller type</b>	fixed
<b>Propeller shaft material</b>	stainless steel
<b>Shaft lubrication</b>	water
<b>Electric bilge pump</b>	yes
<b>Bilge alarm</b>	yes
<b>Batteries</b>	5
<b>Start battery</b>	1x 60 Ah.
<b>Service battery</b>	3x 125 Ah
<b>Bowthruster battery</b>	1x 100 Ah
<b>Battery charger/inverter</b>	1600 W. Victron multiplus 12-1600-70
<b>Shorepower</b>	with cable
<b>Insulation transformer</b>	yes

## NAVIGATION

<b>Compass</b>	Garmin echomap 50 S
<b>Depth sounder</b>	Nasa Marine
<b>Windset</b>	Advanseas S 400
<b>VHF</b>	Shipmate RS 8300
<b>Autopilot</b>	Simrad Robertson AP20
<b>Radar</b>	AIS/SRAT/Radar
<b>GPS</b>	Furuno GPS Navigator
<b>Navtex</b>	Nasa Marina
<b>Radio receiver</b>	Wereldontvanger
<b>Navigation lights</b>	yes
<b>Searchlight</b>	Deck light

## EQUIPMENT

<b>Fixed windscreen</b>	9 fixed at the top of the wheelhouse 4 gangs 5 opening windows
<b>Cockpit table</b>	yes



Boarding ladder	stainless steel
Anchor	CQR Plough - 15 kg.
Anchor chain	yes
Windlass	manual
Sea railing	stainless steel
Grab rail (superstructure)	aluminium
Railing side opening gates	yes
Pulpit	yes
Life raft	valise (or bag)
Last life raft survey	2017
Wiper	2 X
Binocular	yes
Radar reflector	yes
Fenders	6 X
Mooring lines	6 X
Spare parts	yes
Radio-cd player	yes
Cockpit speakers	yes
Speakers in salon	yes
Speakers in cabin	yes
Clock - barometer	yes
Fire extinguisher	2 X

## RIGGING

Rigging	cutter
Standing rigging	wire
Brand mast	Neutmast
Material mast	aluminium
Spreaders	2
Mainsail	20m2
Stoway mast	yes



<b>Cutterstay</b>	yes
<b>Mizzen</b>	10.8m2 - 2023
<b>Mizzen sailcover</b>	2023
<b>Genoa I</b>	New in jaar 2022 29m2
<b>Genoa III</b>	yes
<b>Genoa furler</b>	New in Aug.2023
<b>Genoa cover</b>	New in 2022
<b>Stormjib</b>	- +/- 8m2
<b>Reefing System</b>	main in-mast furling - in cassette
<b>Backstay adjuster</b>	mechanical
<b>Boomvang</b>	tackle
<b>Primary sheet winch</b>	2 Andersen
<b>Genoa sheetwinches</b>	2
<b>Halyard winches</b>	2
<b>Multifunctional winches</b>	1
<b>Extra info</b>	separate genua boom

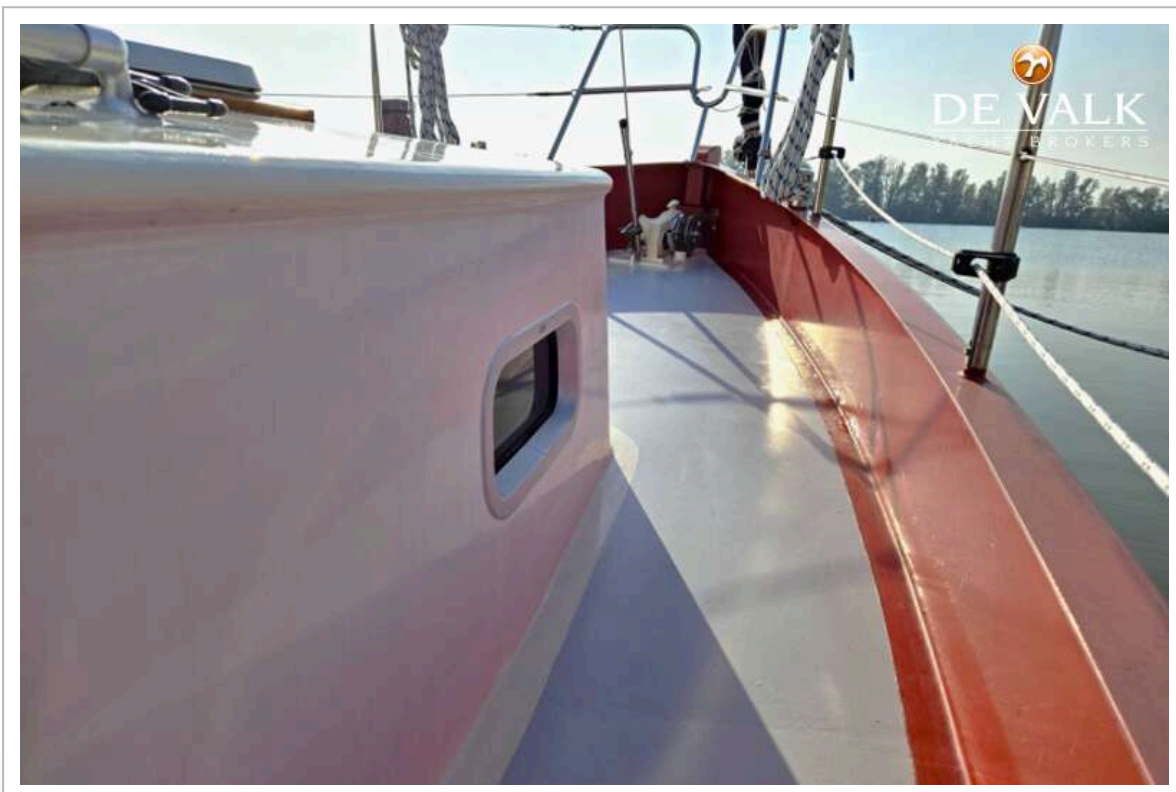




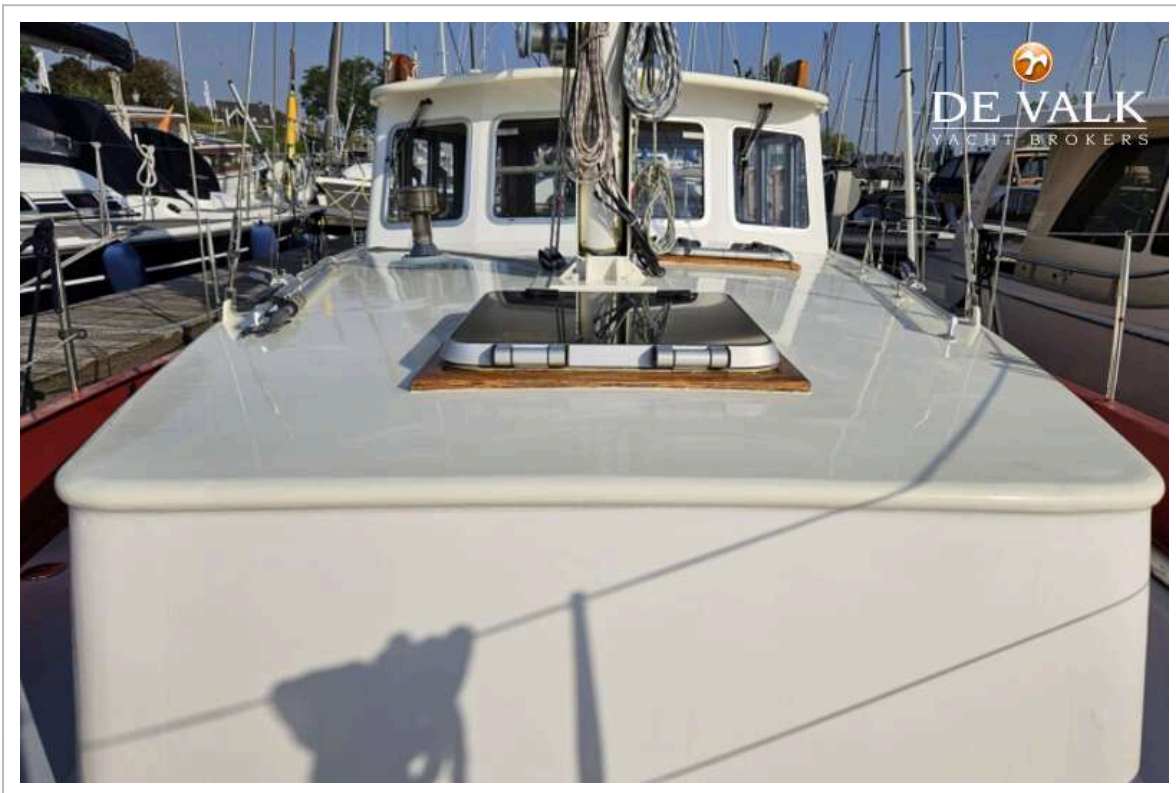
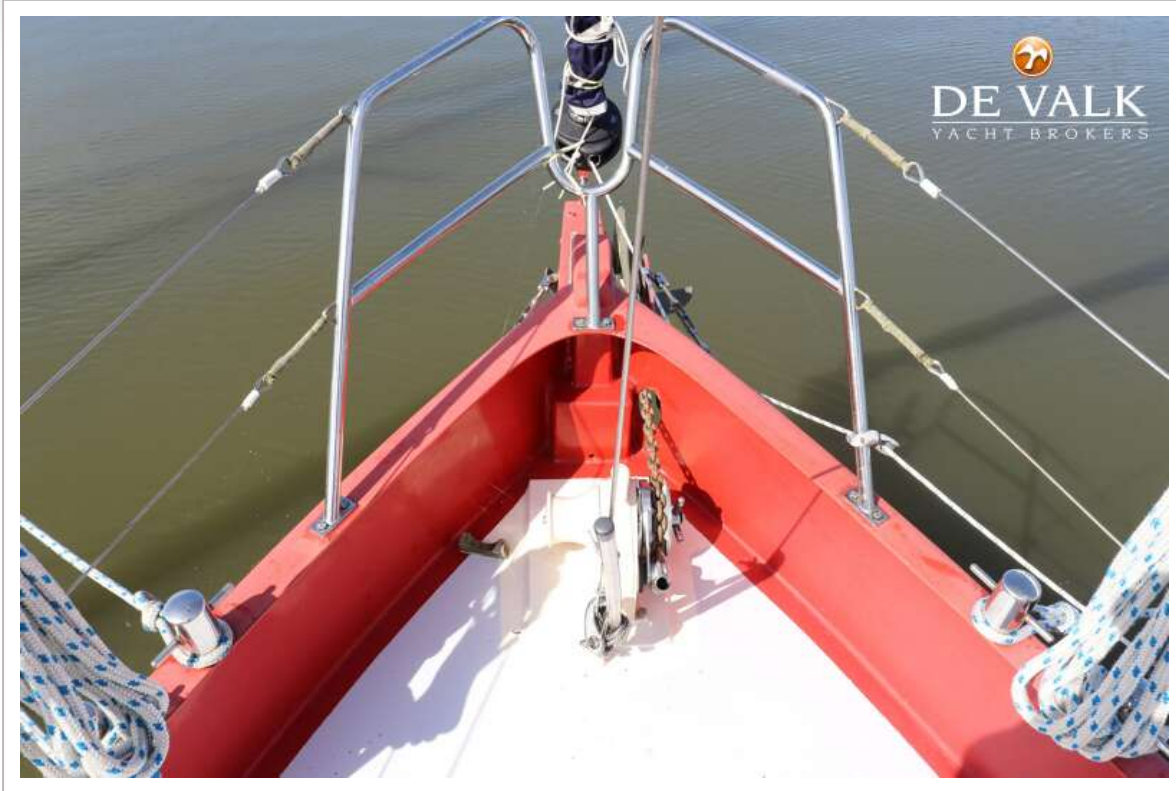
# NOORDKAPER 34



# NOORDKAPER 34

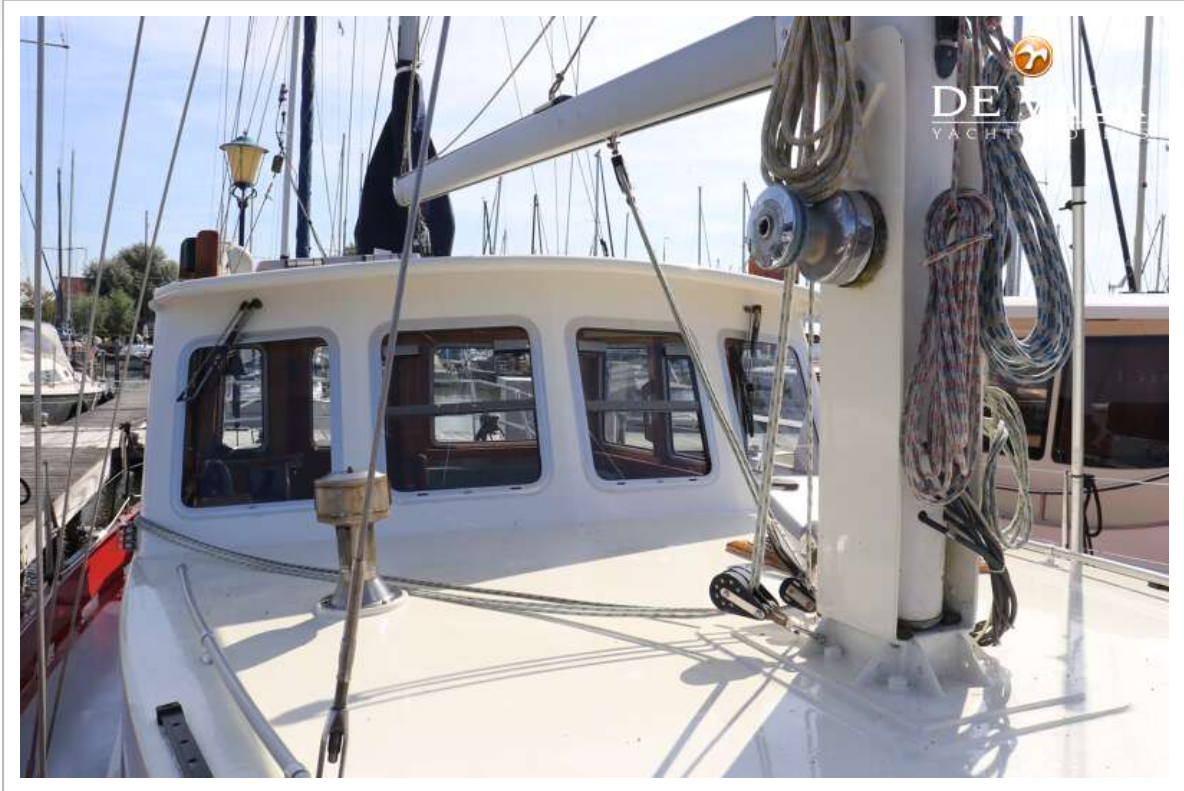


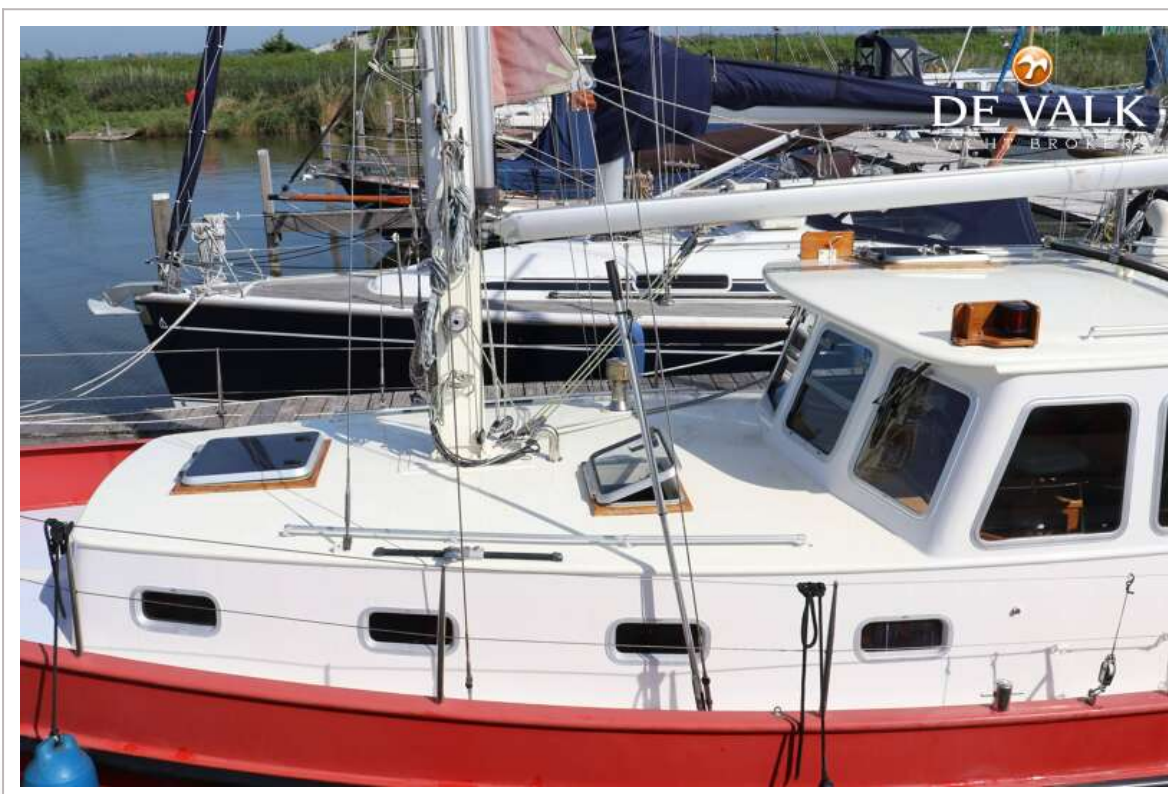
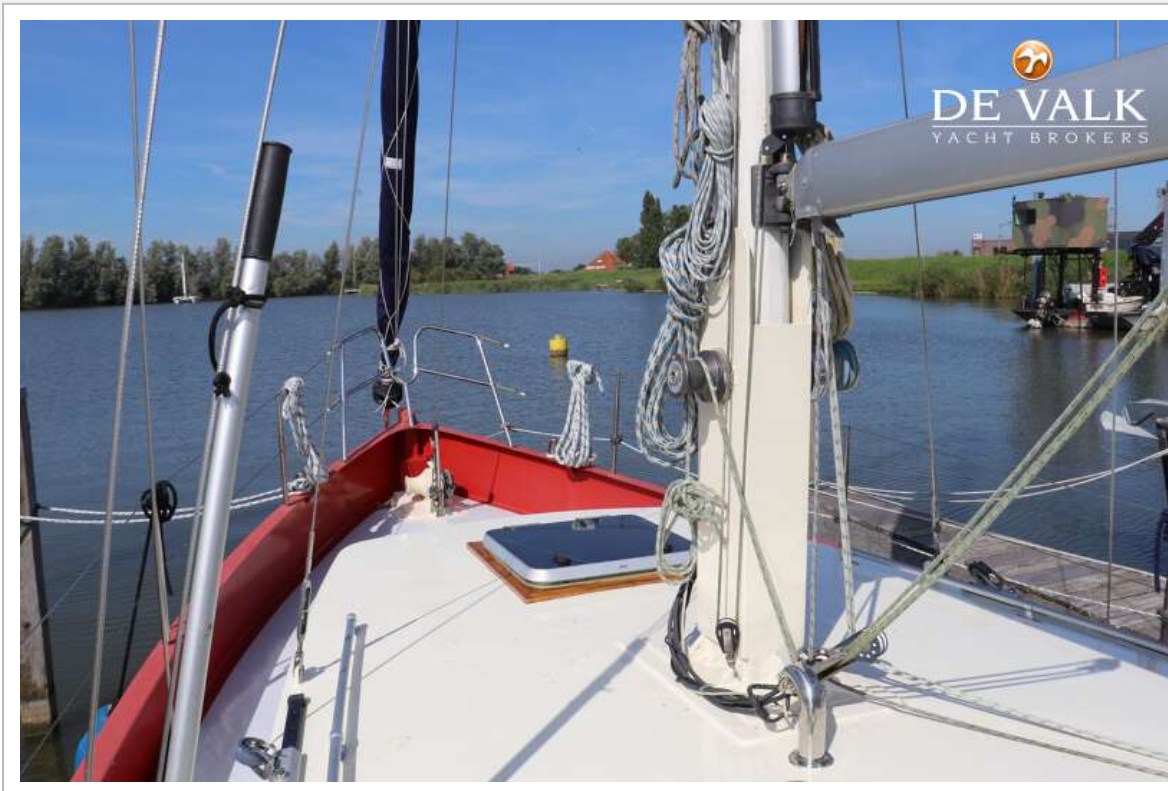
# NOORDKAPER 34





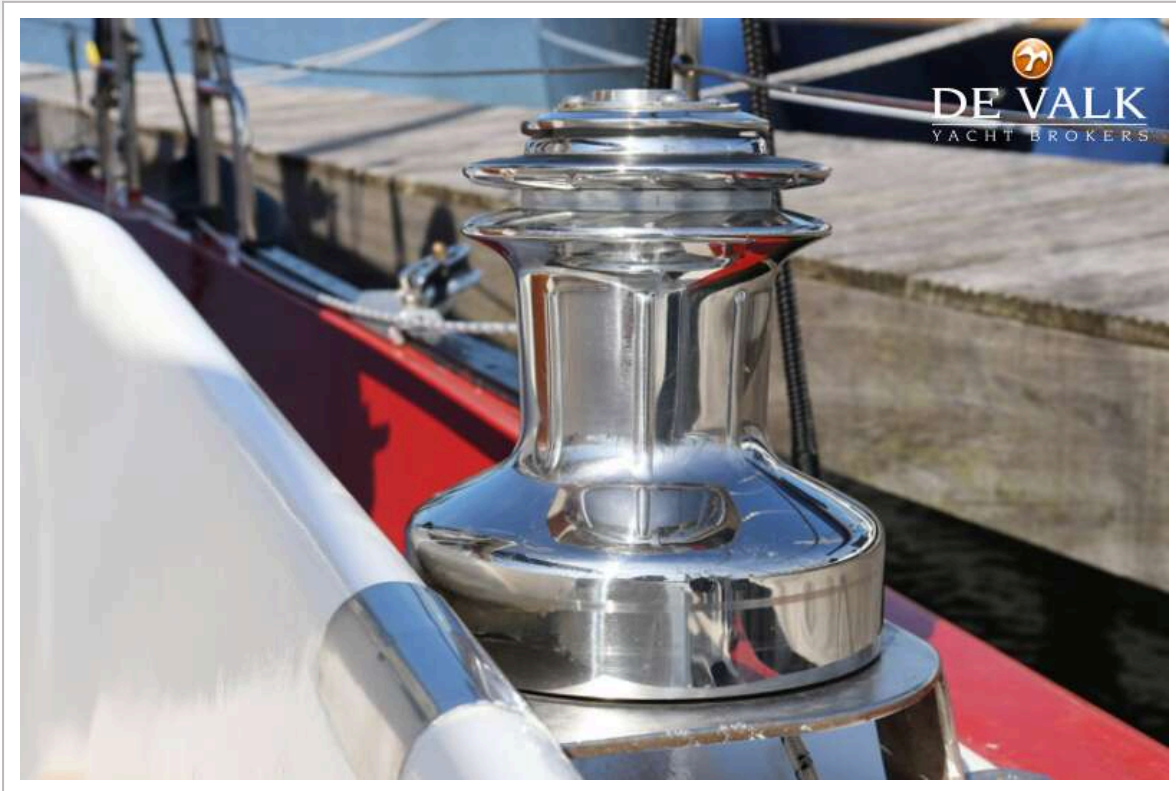
# NOORDKAPER 34





# NOORDKAPER 34







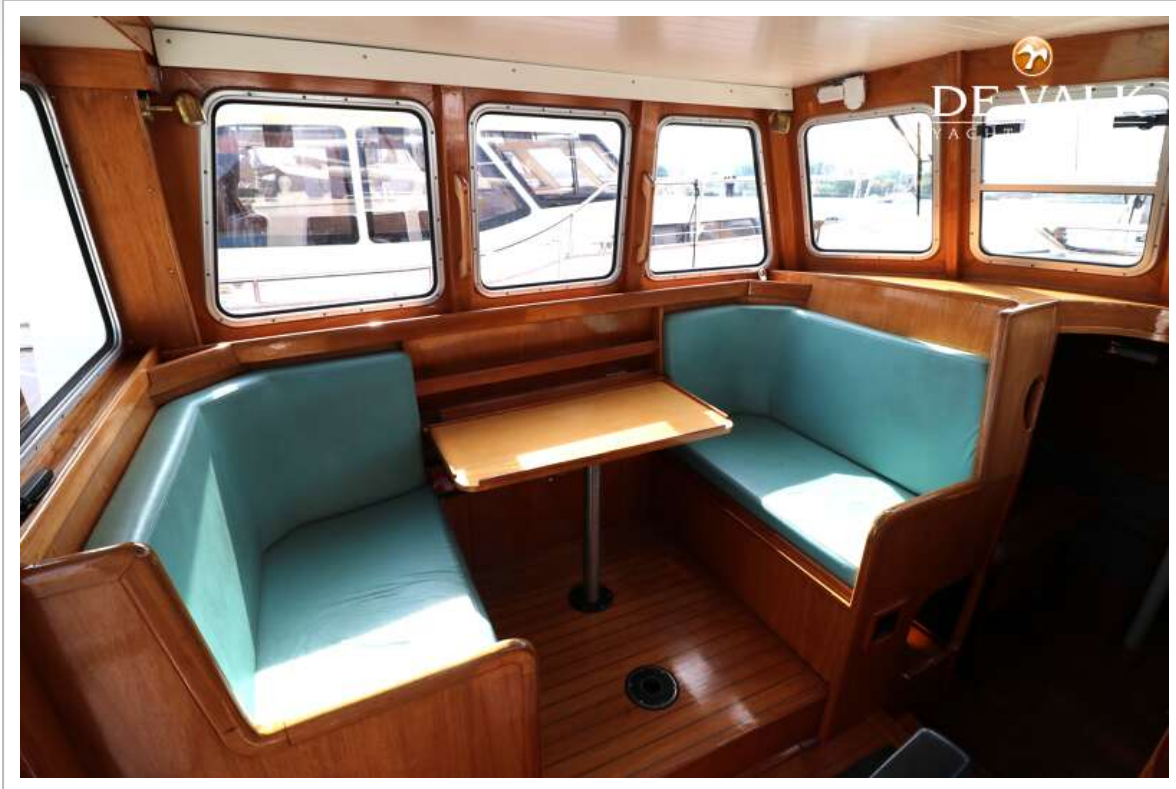
# NOORDKAPER 34

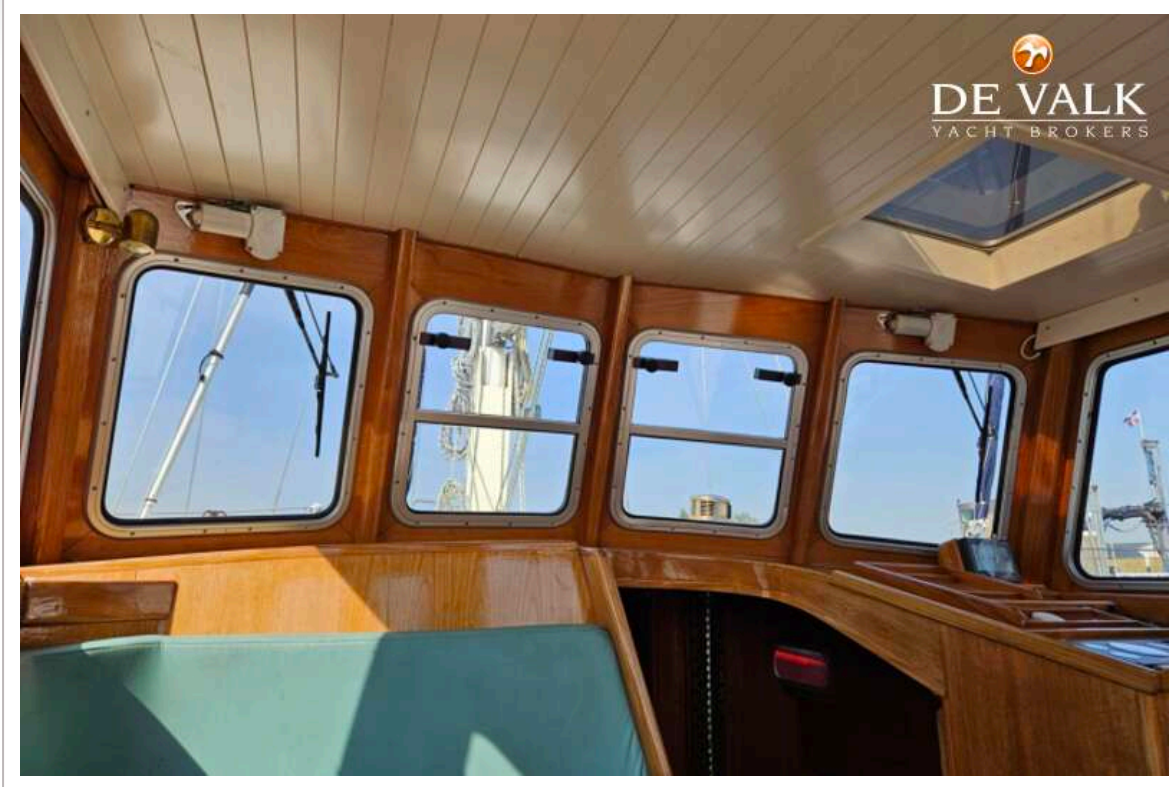


# NOORDKAPER 34

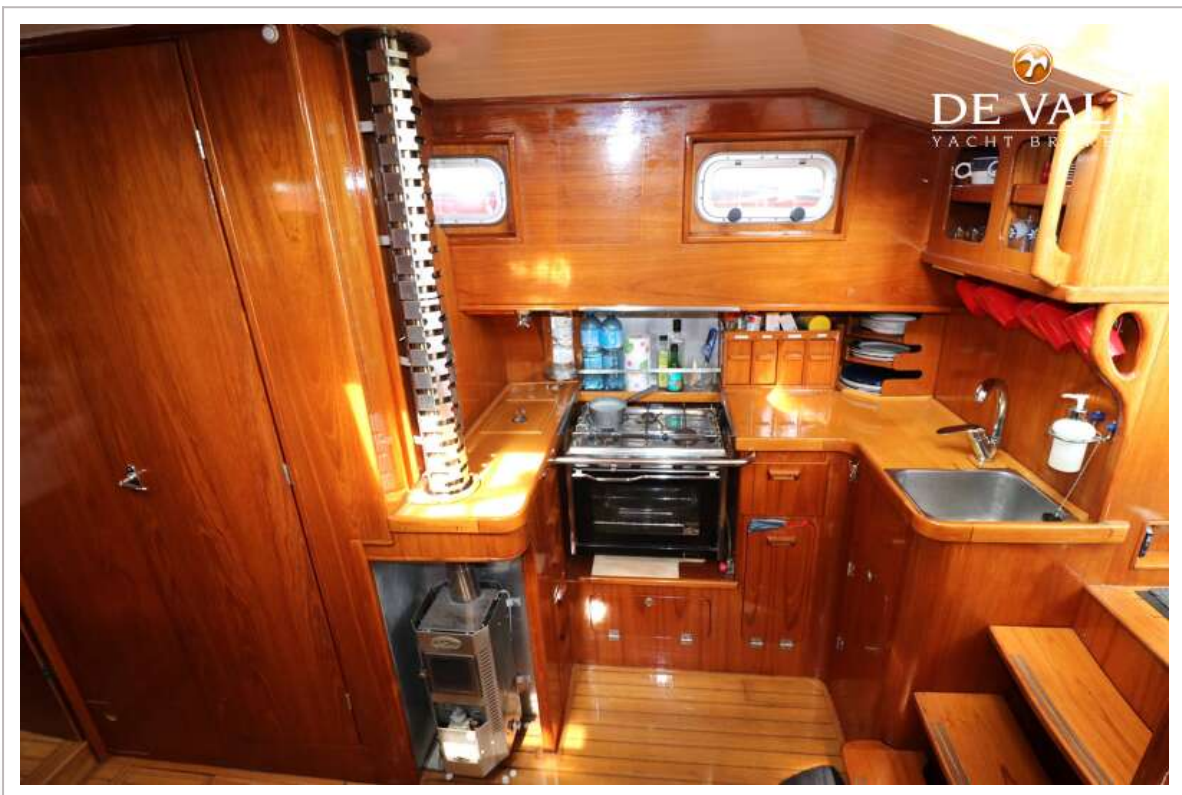


# NOORDKAPER 34





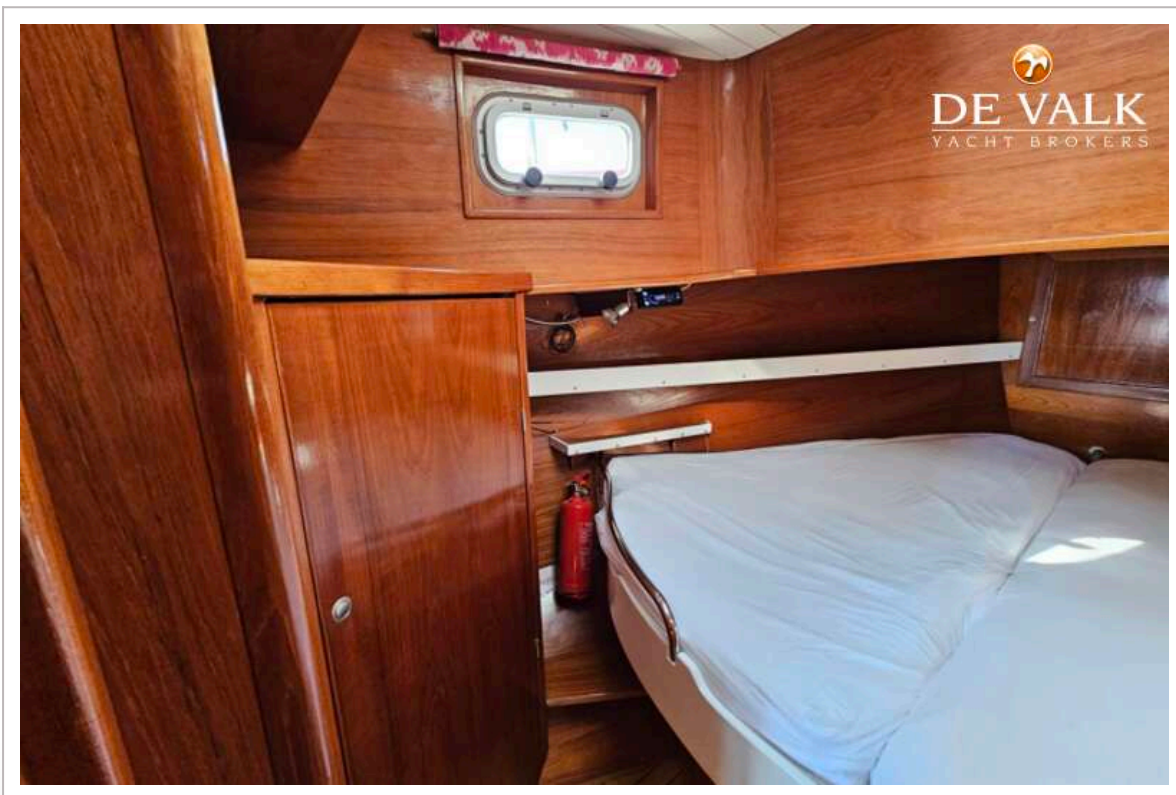
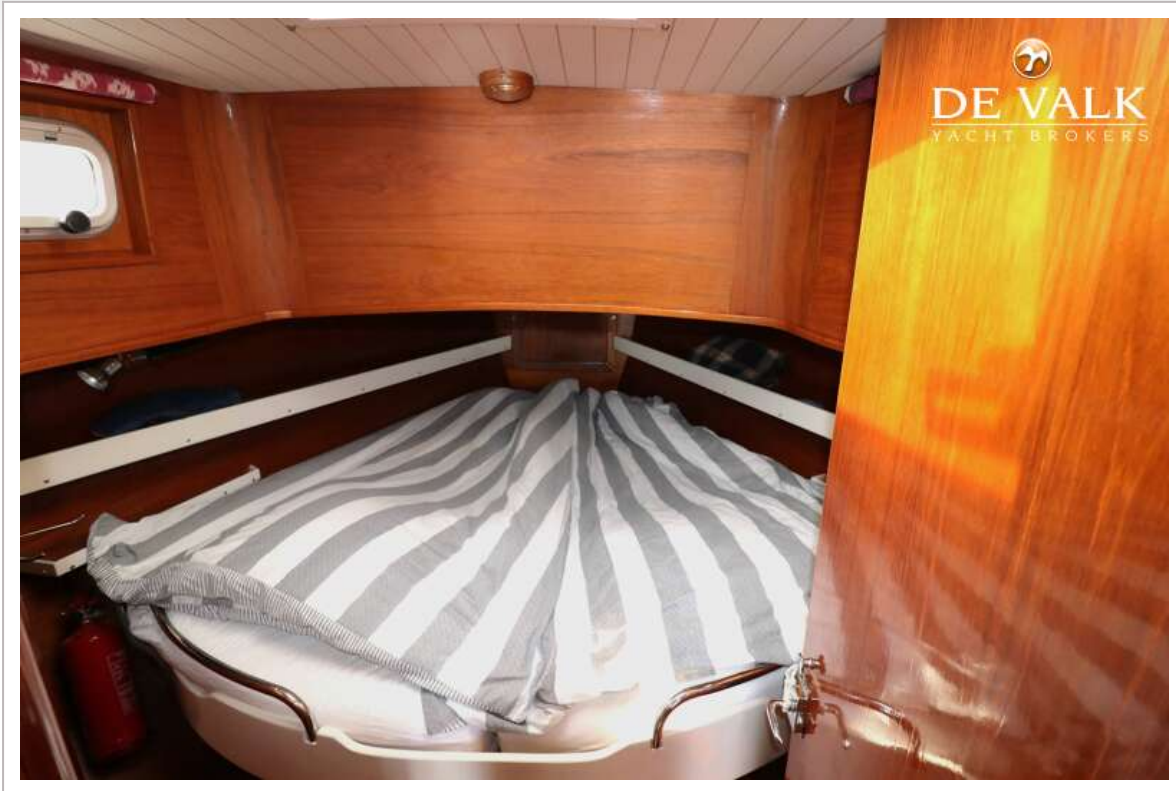
# NOORDKAPER 34

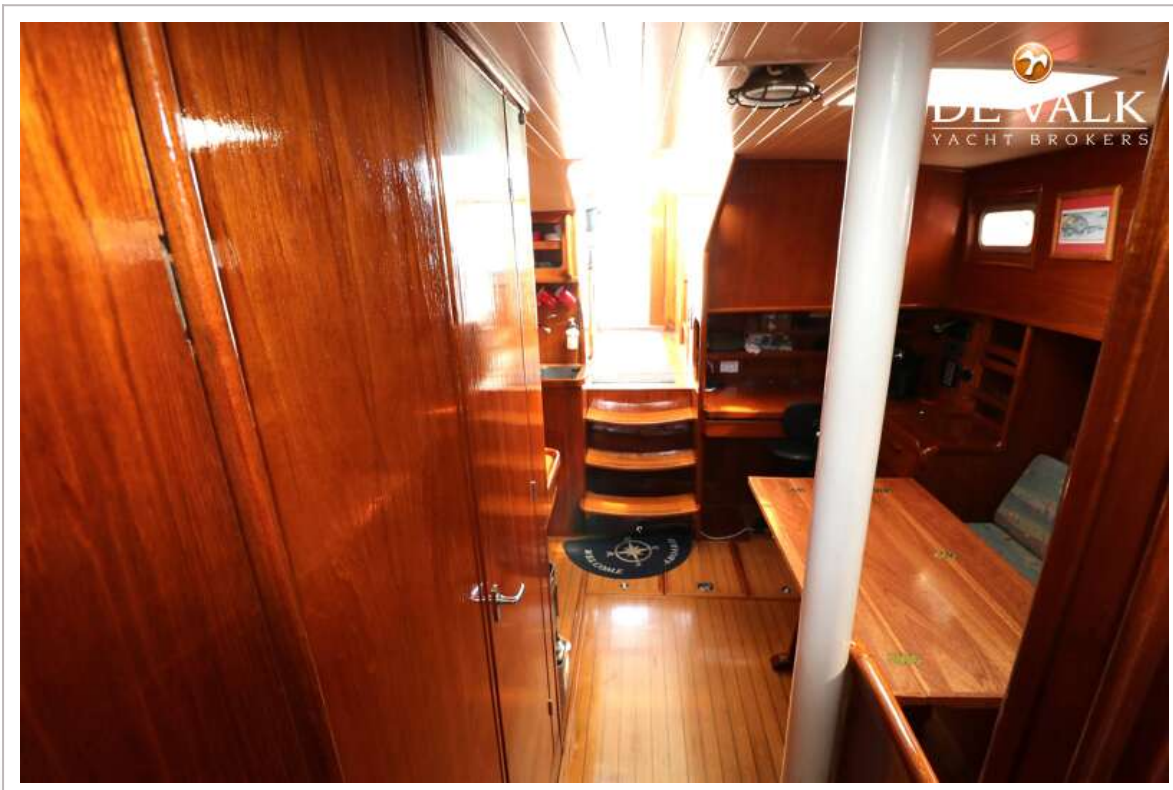
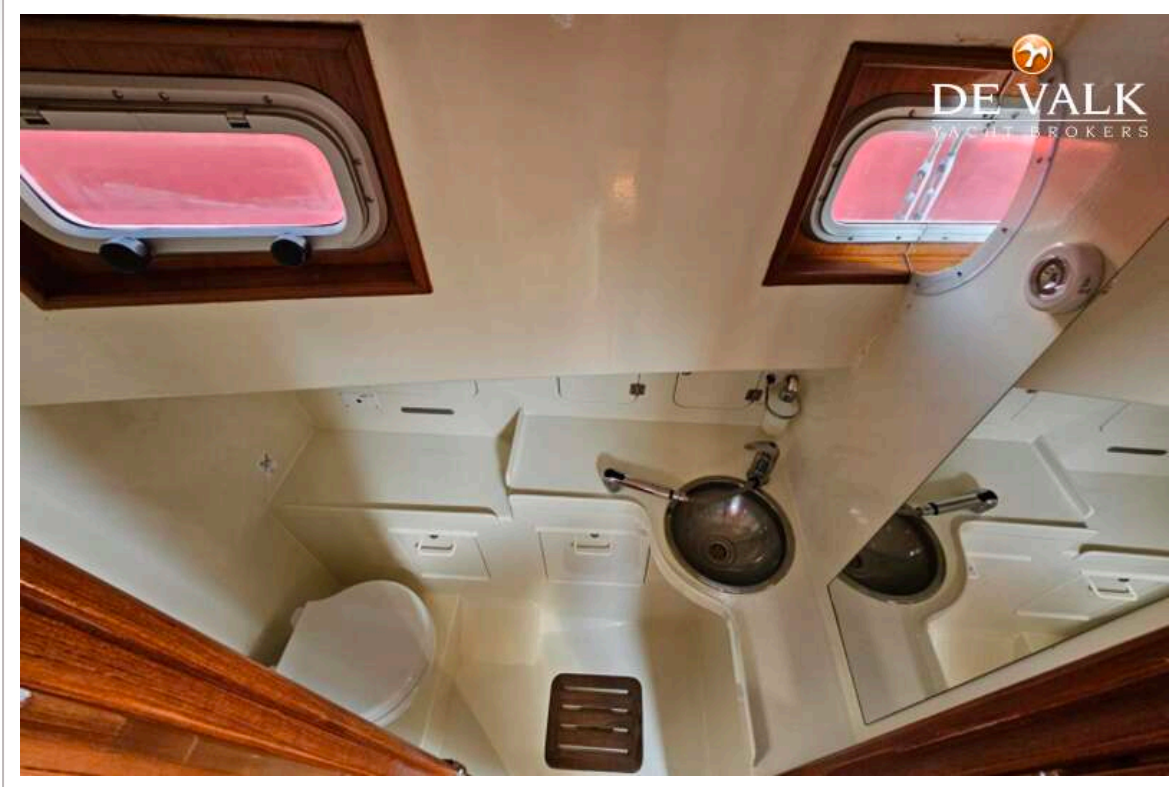


# NOORDKAPER 34



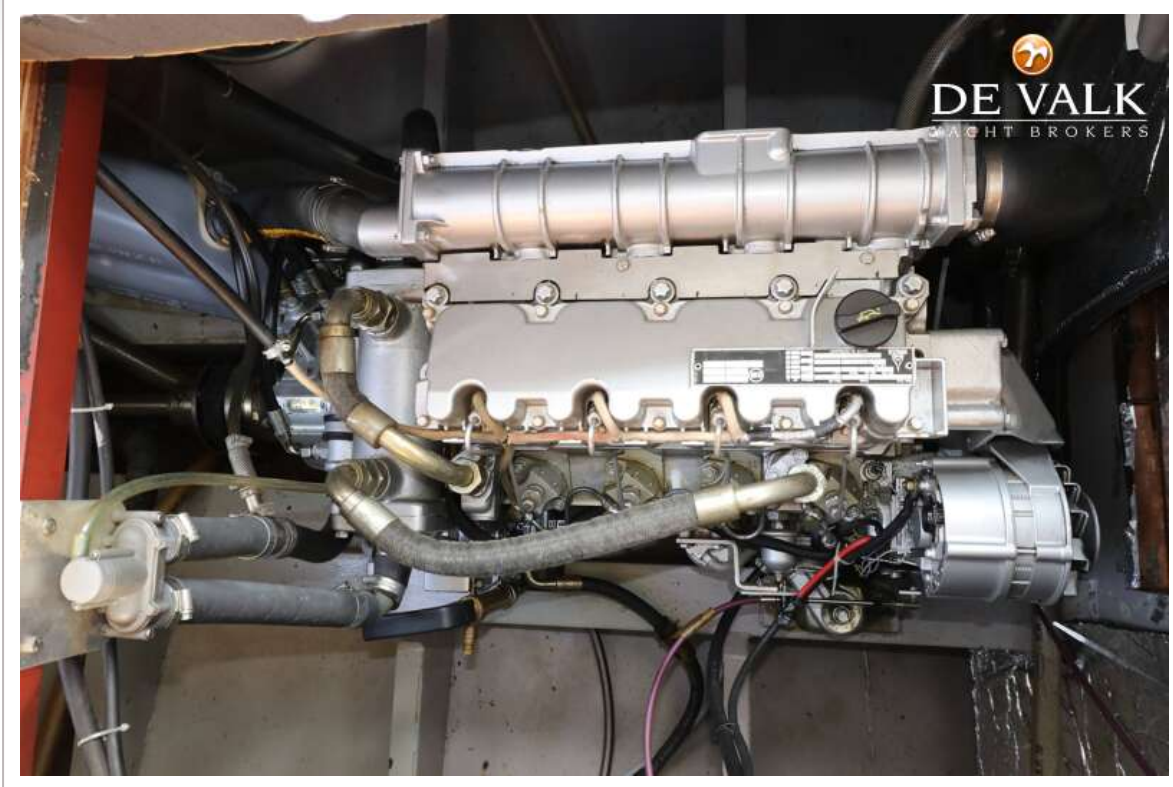
# NOORDKAPER 34

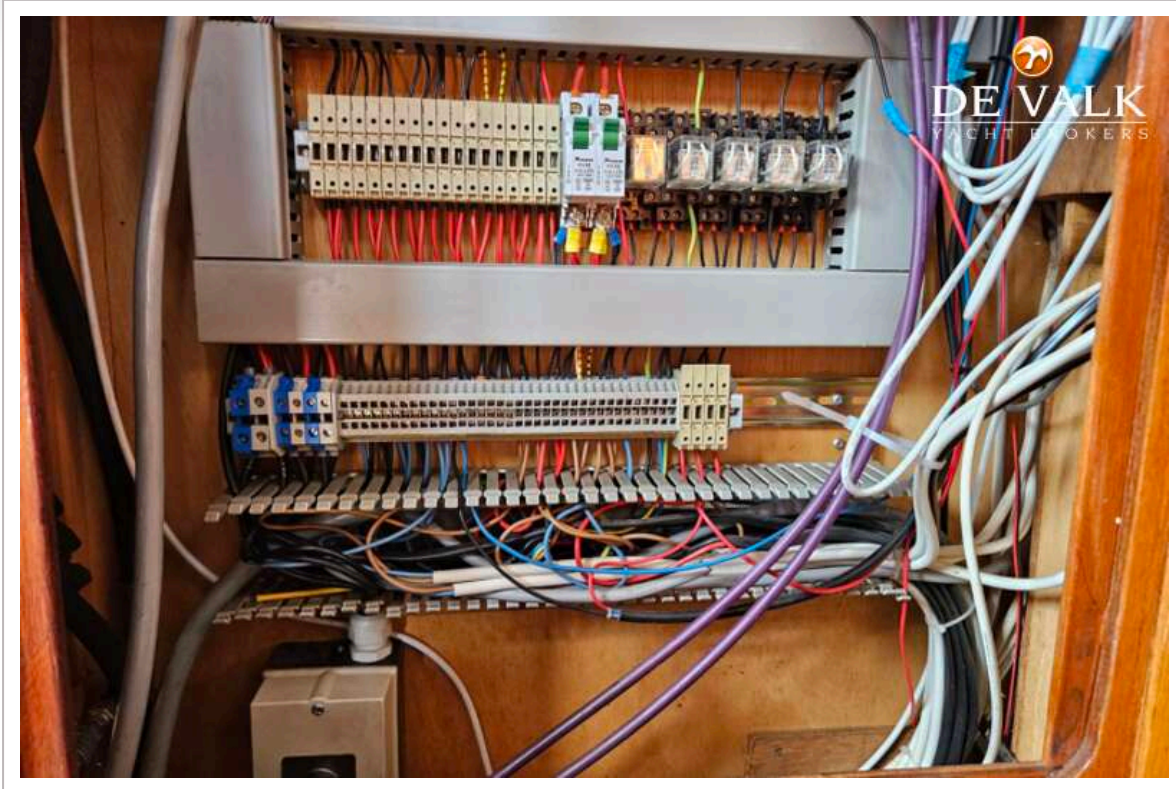












# NOORDKAPER 34

