



## ELEGANCE 76

## BROKER'S COMMENTS

The well-maintained Elegance 76 is the epitome of luxury and performance. With a spacious salon, fully equipped galley, and three staterooms, it offers comfort and style on the water. The flybridge and aft deck provide plenty of space for entertaining or relaxing, while the swim platform is perfect for water sports. Equipped with advanced navigation this yacht is built to handle even the toughest conditions. Don't miss your chance to own this gem - contact us today to schedule a viewing and experience the ultimate in luxury yachting.

*Bas Lohmann*

## SPECIFICATIONS

<b>Dimensions</b>	23.17 x 5.70 x 1.65 (m)	<b>Builder</b>	Horizon
<b>Built</b>	2000	<b>Cabins</b>	4
<b>Material</b>	GRP	<b>Berths</b>	8
<b>Engine(s)</b>	2 x Caterpillar CAT 3412 diesel	<b>Hp/Kw</b>	2 x 1,368.00 (hp), 1,006.85 (kw)
<b>Asking price</b>	€ 375.000 (VAT Paid)	<b>Lying</b>	at sales office

## CONTACT

<b>Sales office</b>	De Valk Loosdrecht B.V.	<b>Telephone</b>	+31 (0)35 582 90 30
<b>Address</b>	't Breukeleveense Meentje 6 1231LM Loosdrecht / Wijdmeren NL	<b>E-mail</b>	loosdrecht@devalk.nl

## DISCLAIMER

These particulars are given in good faith as supplied but cannot be guaranteed.



## GENERAL

Model	ELEGANCE 76
Type	motor yacht
LOA (m)	23,17
Beam (m)	5,70
Draft (m)	1,65
Year built	2000
Builder	Horizon
Country	Taiwan
Displacement (t)	51
Hull material	GRP
Hull colour	white
Hull shape	Fast Displacement Hull
Superstructure material	GRP
Deck material	GRP
Deck finish	teak
Superstructure deck finish	non-skid moulded in
Cockpit deck finish	teak
Window frame	yes
Window material	tempered glass
Deckhatch	yes
Portholes	yes
Flybridge	yes
Fuel tank (litre)	7500 L
Level indicator (fuel tank)	yes
Freshwater tank (litre)	1600
Level indicator (freshwater)	yes
Wheel steering	yes
Inside helm position	yes
Flybridge helm position	yes



## ACCOMMODATION

Cabins	4
Berths	8
Crew cabin	1
Crew berths	4
Open cockpit	yes
Aft deck	yes
Saloon	yes
Air-conditioning	reverse cycle airco Warm/cold in entire ship
Dining room	yes
Dinette	yes
Sliding door to aft deck	yes
Galley	yes
Countertop	yes
Sink	yes
Cooker	yes
Oven	yes
Fridge	yes
Freezer	yes
Hot water system	220V + engine
Water pressure system	yes
Owners cabin	French bed
Wardrobe	yes
Bathroom	yes
Toilet	yes
Shower	yes
Guest cabin 1	double bed
Bathroom	yes
Toilet	yes
Shower	yes
Guest cabin 2	double bed



Wardrobe	yes
Toilet	yes
Guest cabin 3	bunk bed
Wardrobe	yes
Bathroom	yes
Toilet	yes
Shower	yes
Crew cabin(s)	1
Bathroom (crew)	yes
Toilet (crew)	yes
Wash basin	yes
Shower (crew)	yes
Washing machine/dryer combi	yes
Flybridge	yes
Wet bar	yes

## MACHINERY

No of engines	2
Make	Caterpillar
Type	CAT 3412
HP	1368
kW	1006.85
Fuel	diesel
Year installed	2000
Maximum speed (kn)	26
Cruising speed (kn)	21
Engine hours	+/- 3000
Engine cooling system	freshwater heat exchanger
Drive	shaft
Engine controls	yes
Gearbox	hydraulic



<b>Bowthruster</b>	Hydraulic 37 HP
<b>Sternthruster</b>	Hydraulic 37 HP
<b>Exhaust</b>	watercooled
<b>Propeller type</b>	fixed
<b>Electric bilge pump</b>	yes
<b>Bilge alarm</b>	yes
<b>Generator</b>	17.5 kW
<b>Generator 2</b>	17.5 kW
<b>Batteries</b>	yes
<b>Battery charger</b>	2x
<b>Shorepower</b>	with cable 220V
<b>Watermaker</b>	yes
<b>Trimtabs</b>	Hydraulic

## NAVIGATION

<b>Compass</b>	yes
<b>Compass on flybridge</b>	yes
<b>Electric compass</b>	Autopilot
<b>Depth sounder</b>	yes
<b>Log</b>	yes
<b>Windset</b>	yes
<b>VHF</b>	yes
<b>Autopilot</b>	yes
<b>Radar</b>	yes
<b>Plotter</b>	yes
<b>Plotter/GPS</b>	yes
<b>Weather receiver</b>	Radio/FAX/Map recorder
<b>Navtex</b>	yes
<b>Personal computer</b>	Seabourne
<b>Navigation lights</b>	yes



## EQUIPMENT

Fixed windscreen	yes
Sun awning	yes
Cockpit cushions	yes
Cockpit table	yes
Cockpit chairs	yes
Bathing platform	yes
Boarding ladder	yes
Gangway	Hydraulic
Anchor	yes
Anchor chain	yes
Windlass	2x
Sea railing	yes
Grab rail (superstructure)	yes
Wiper	yes
Horn	yes
Fenders	yes
Mooring lines	yes
TV	Samsung 42' 3D TV
DVD player	+ Bluray
Surround Sound System	In saloon
Cockpit speakers	yes





# ELEGANCE 76

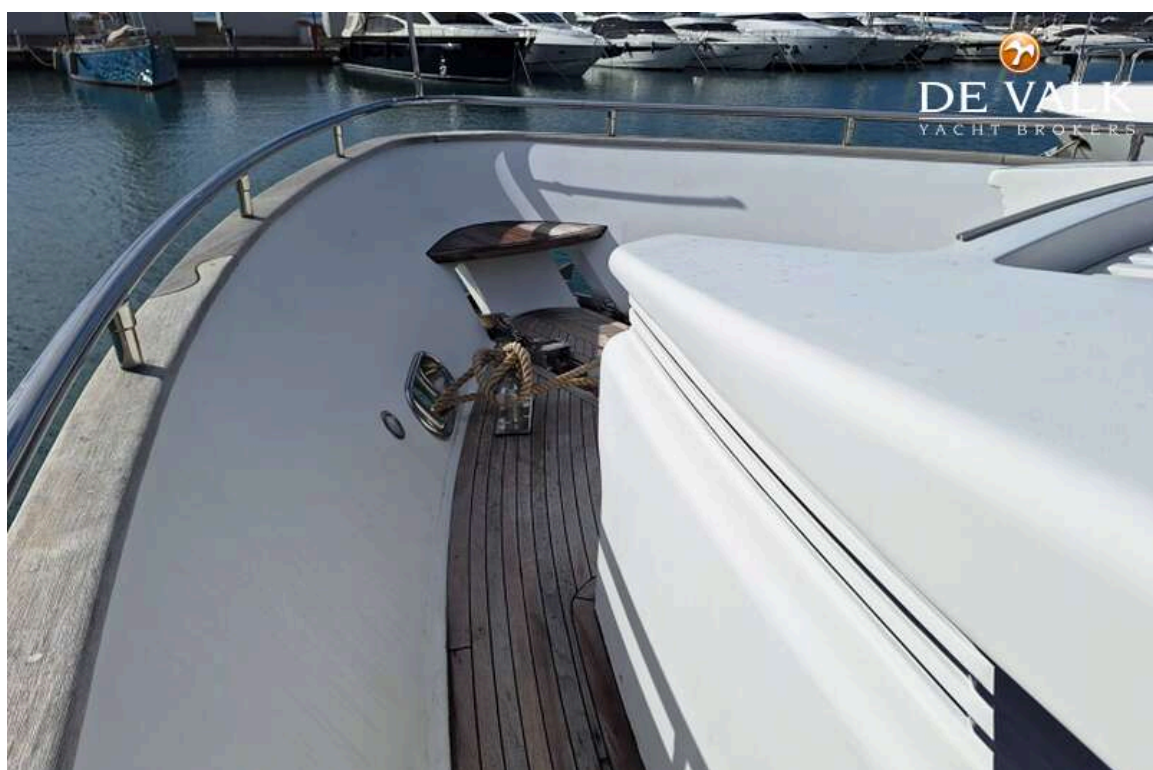




# ELEGANCE 76



# ELEGANCE 76

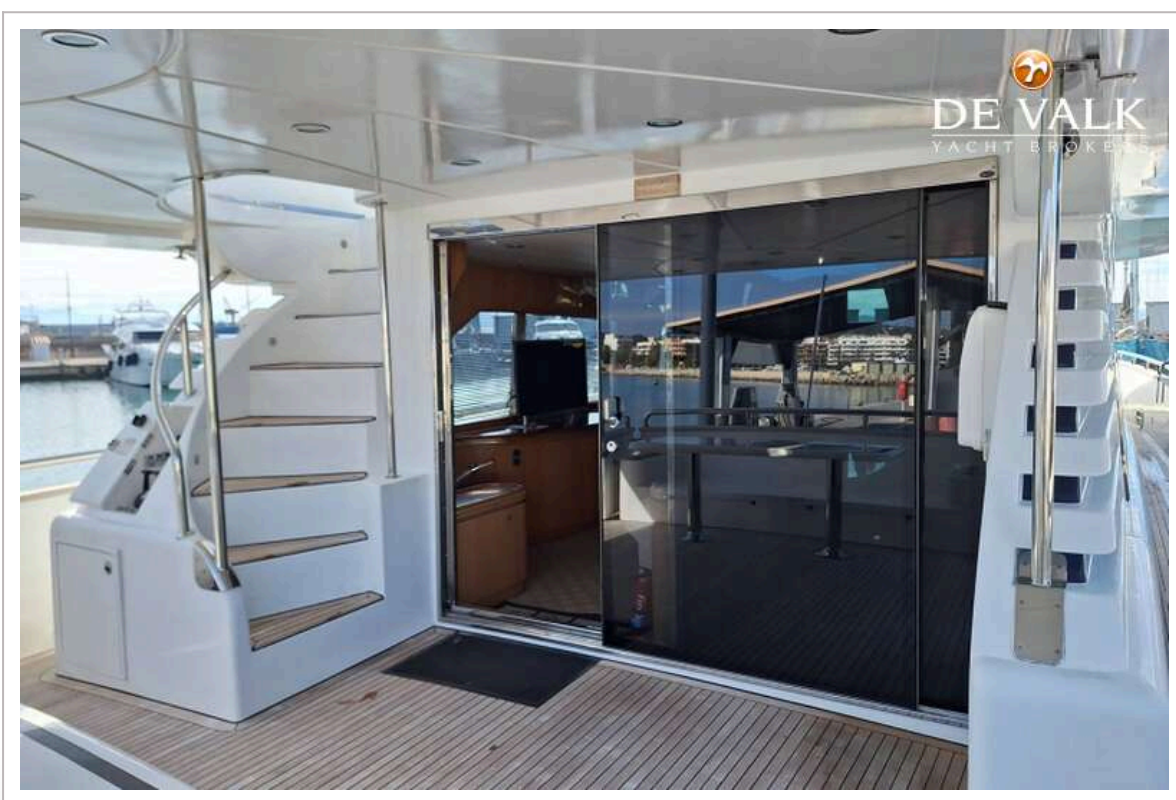
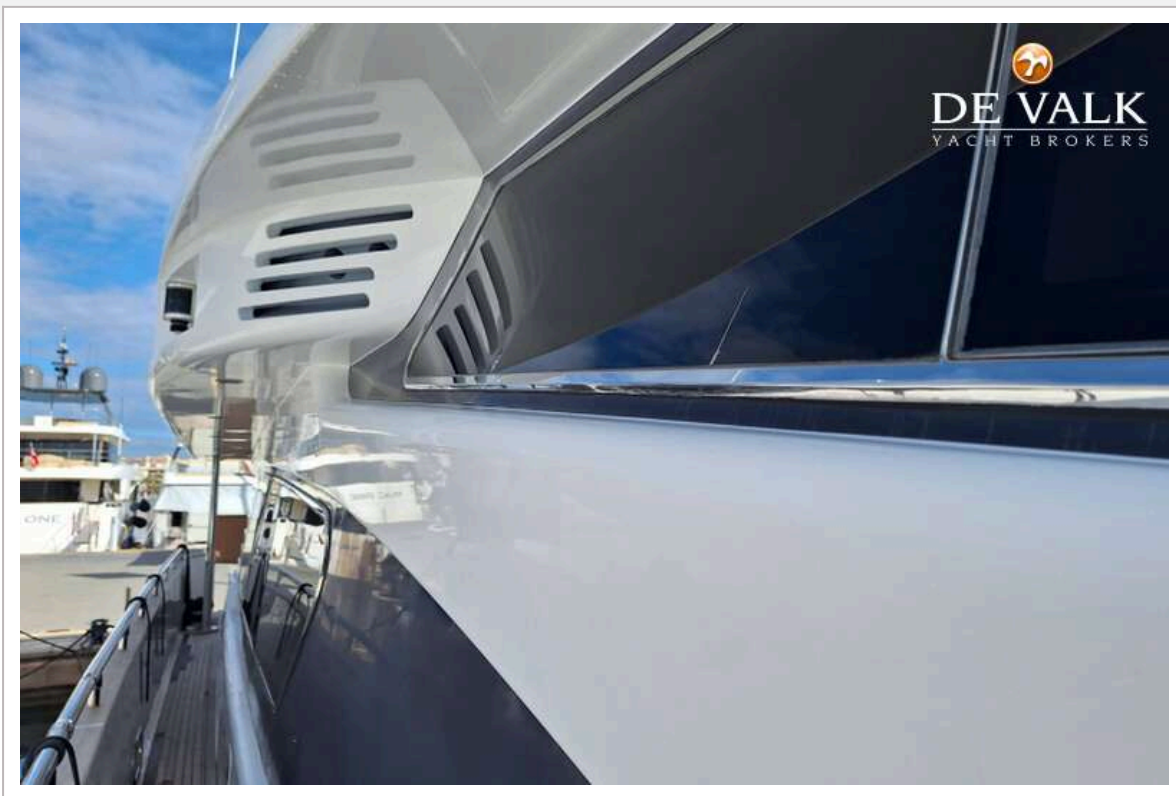




# ELEGANCE 76



# ELEGANCE 76





## ELEGANCE 76

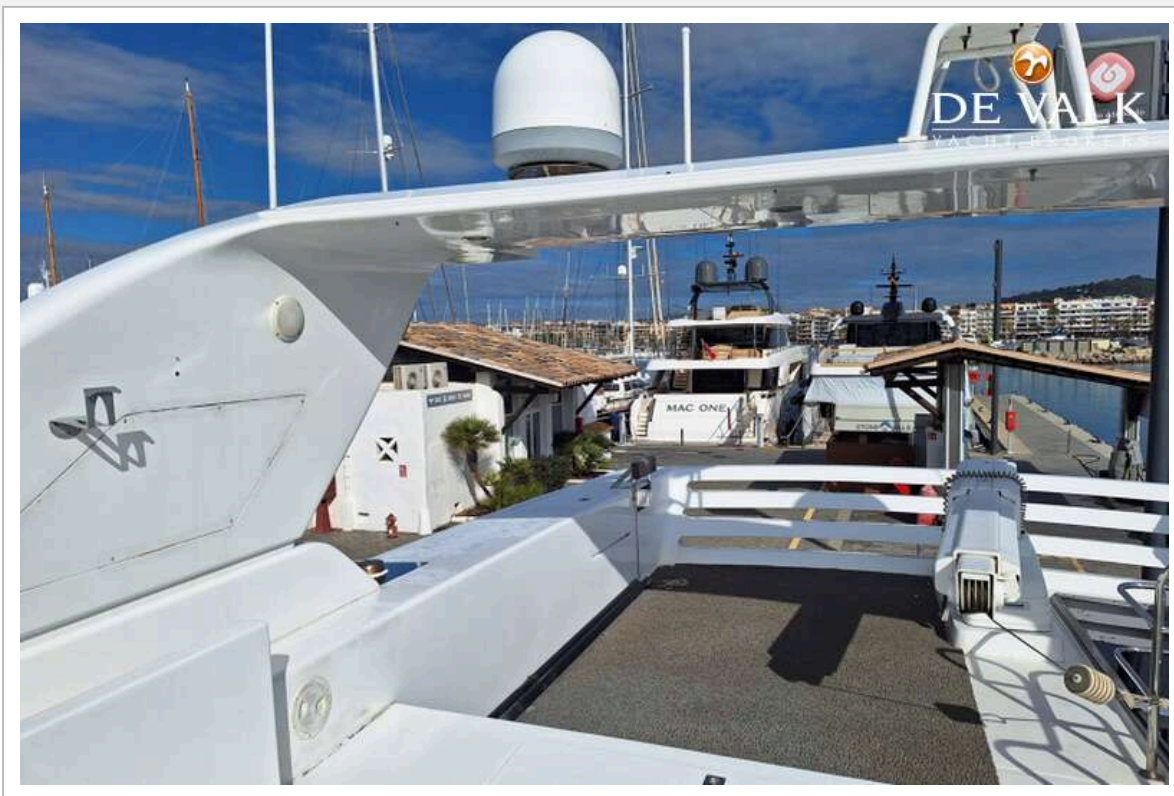


## ELEGANCE 76



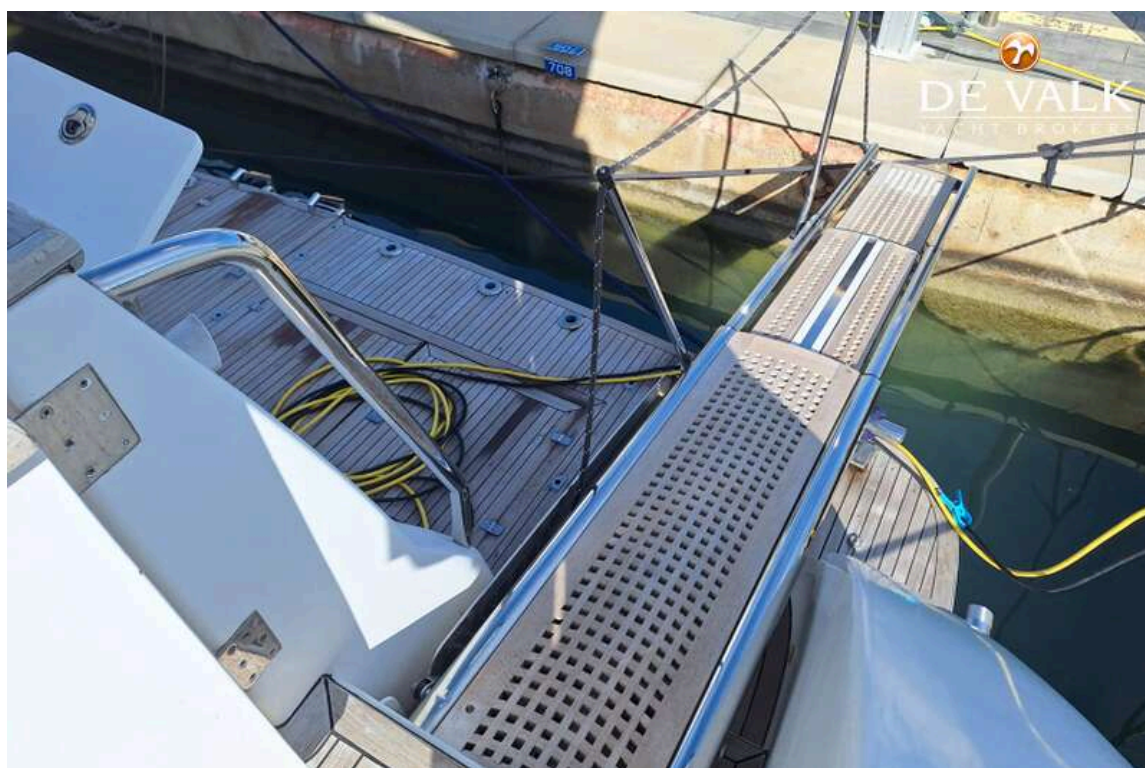


# ELEGANCE 76



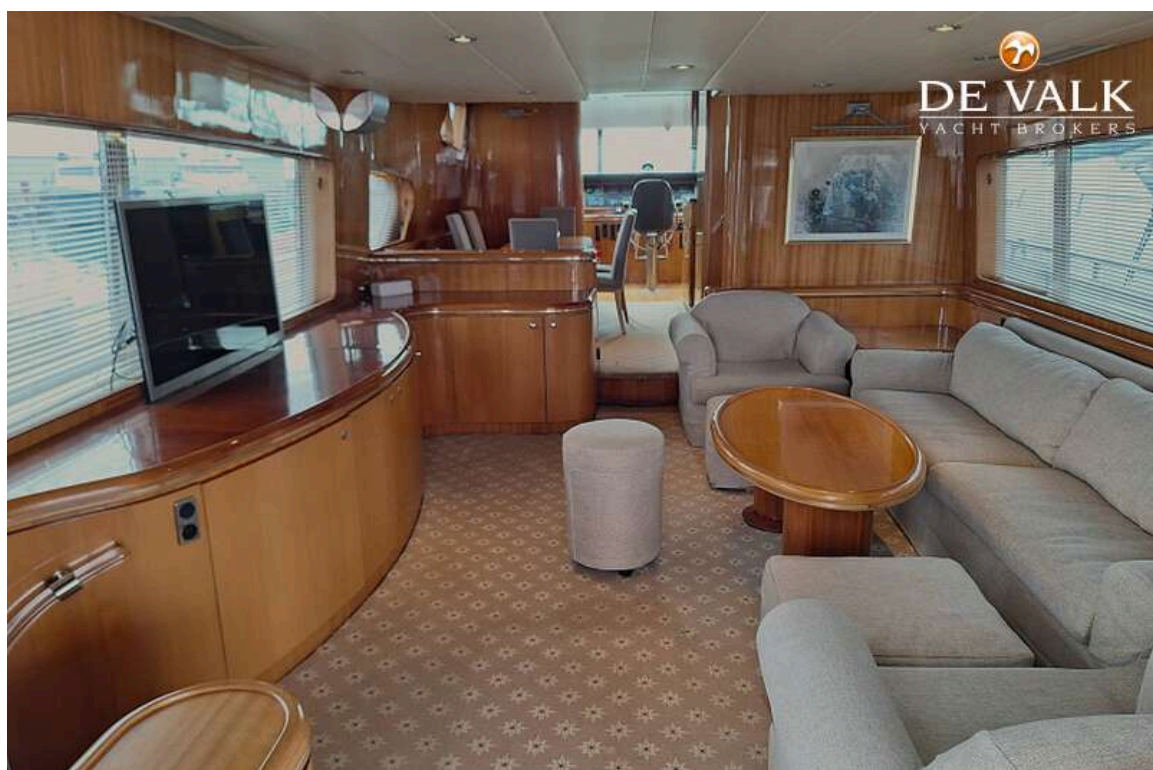


## ELEGANCE 76





# ELEGANCE 76

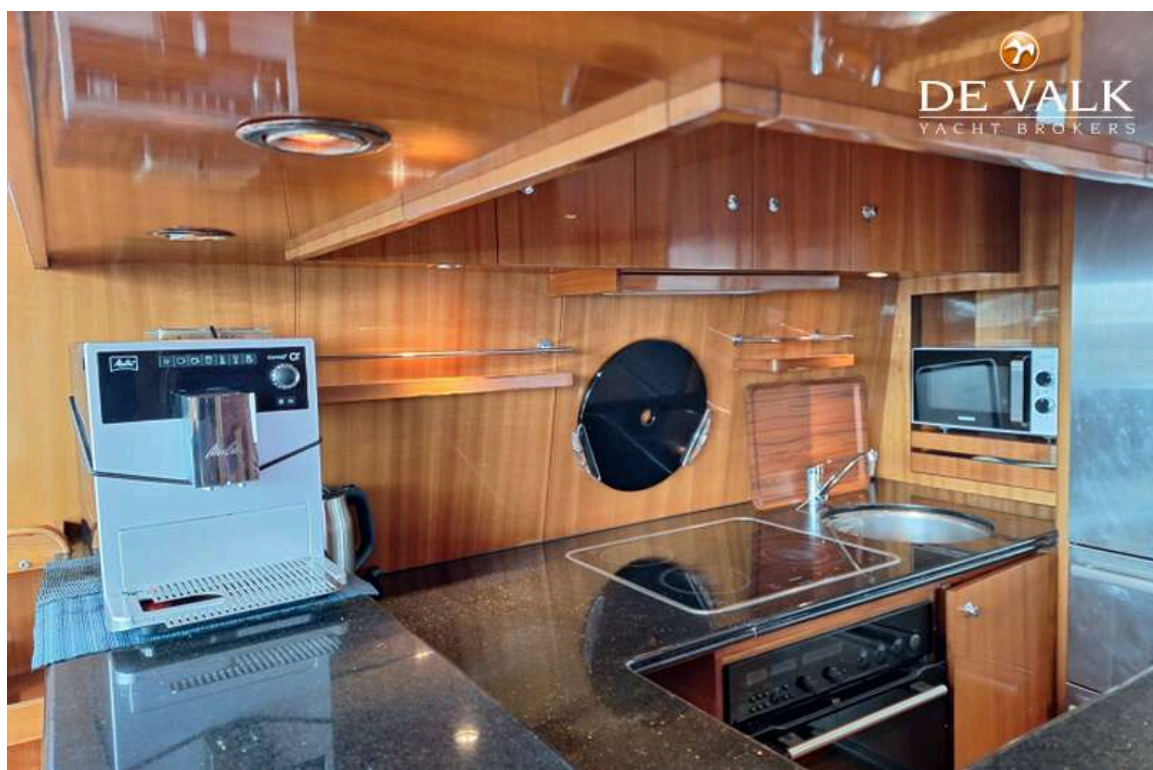
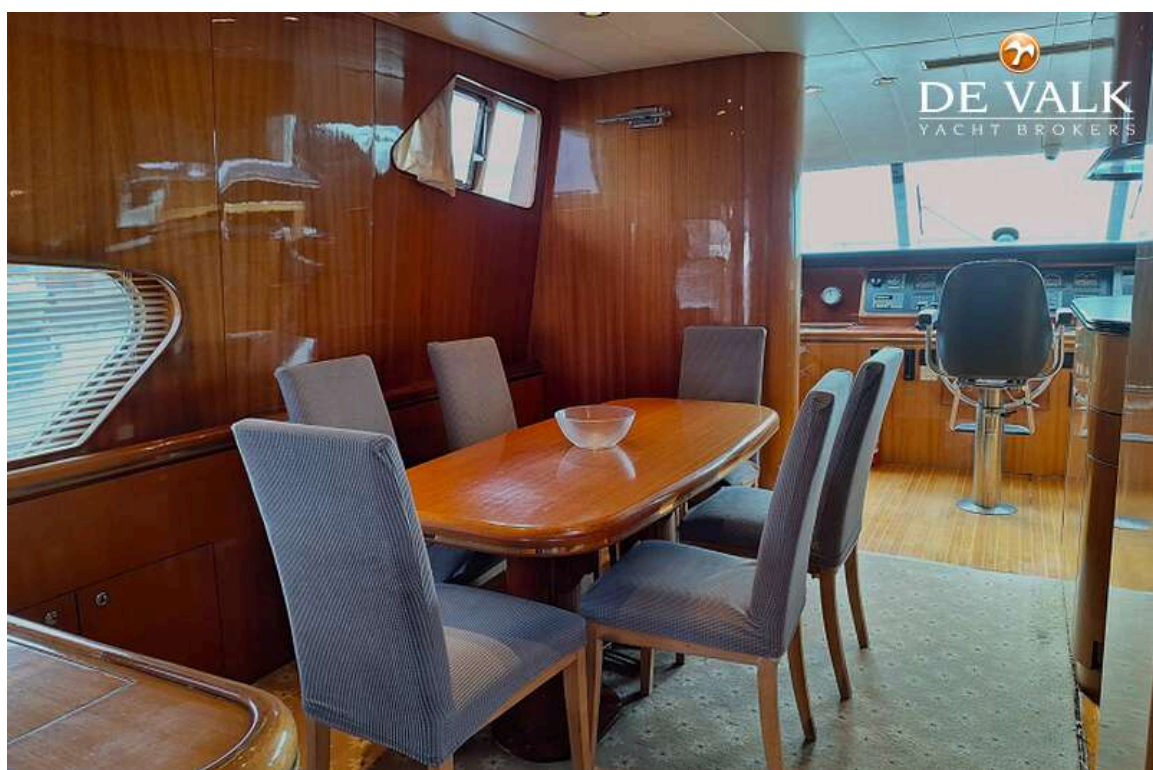


## ELEGANCE 76



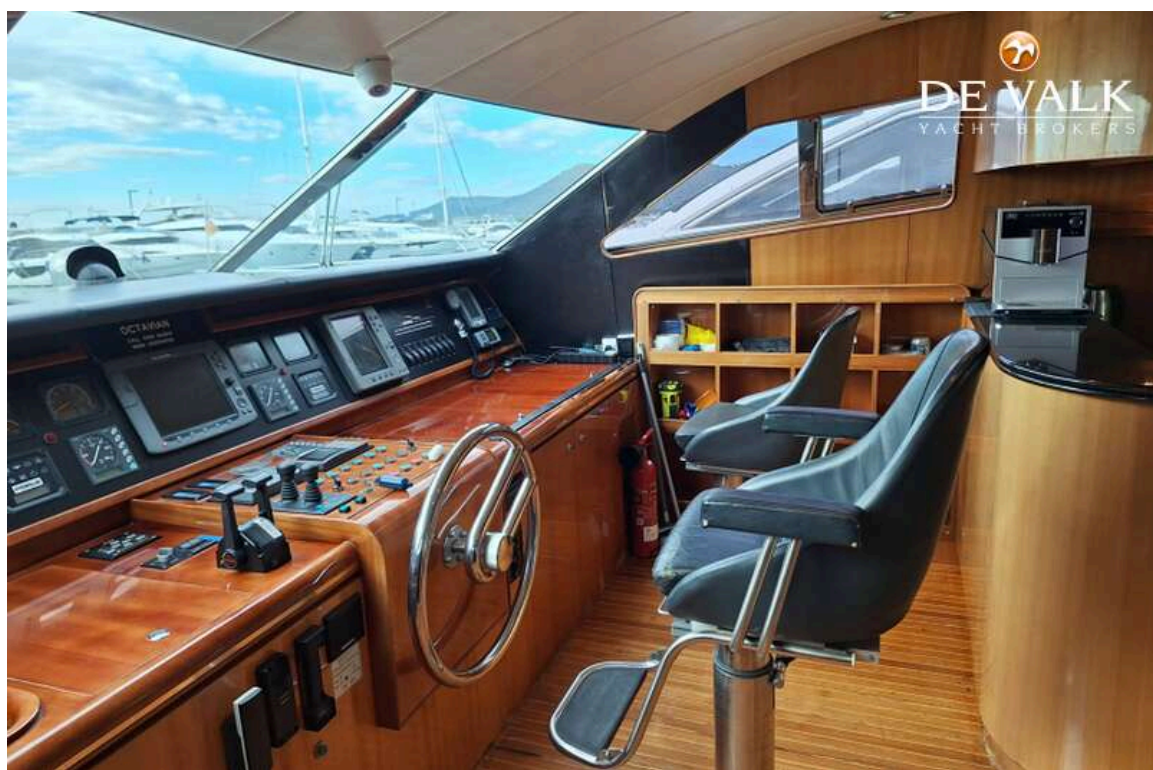


## ELEGANCE 76



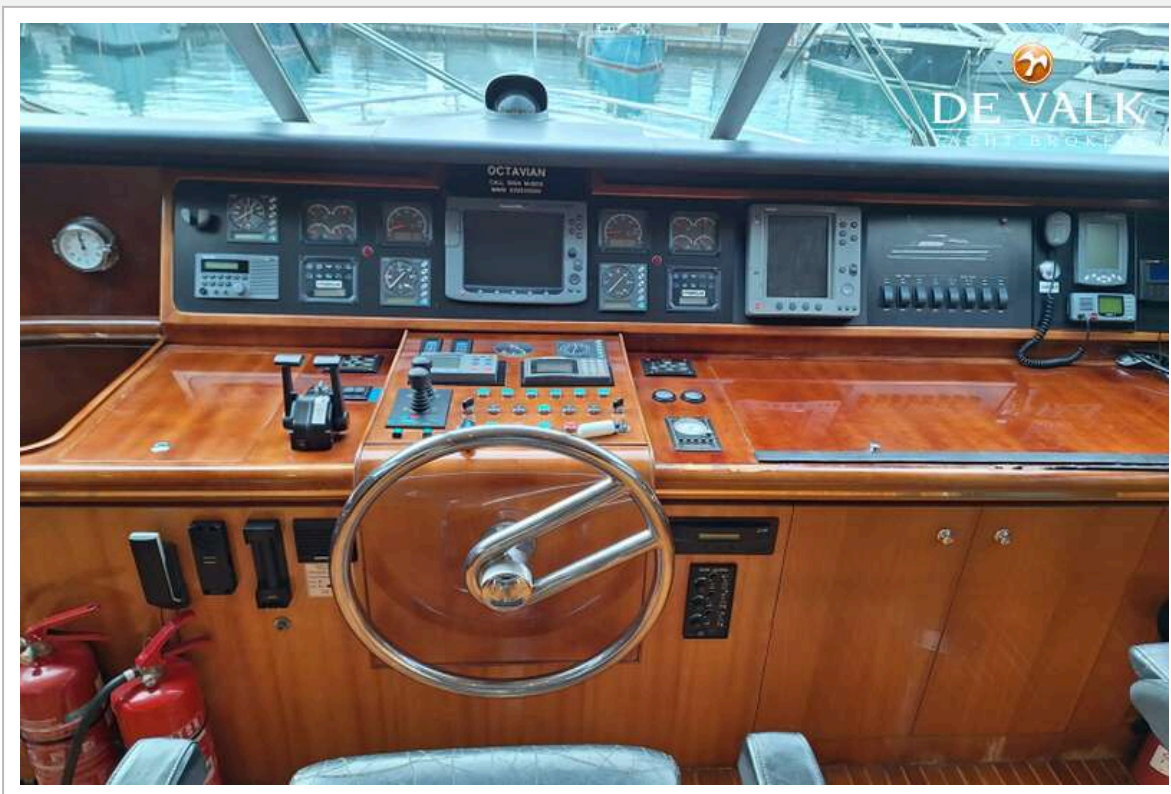


## ELEGANCE 76

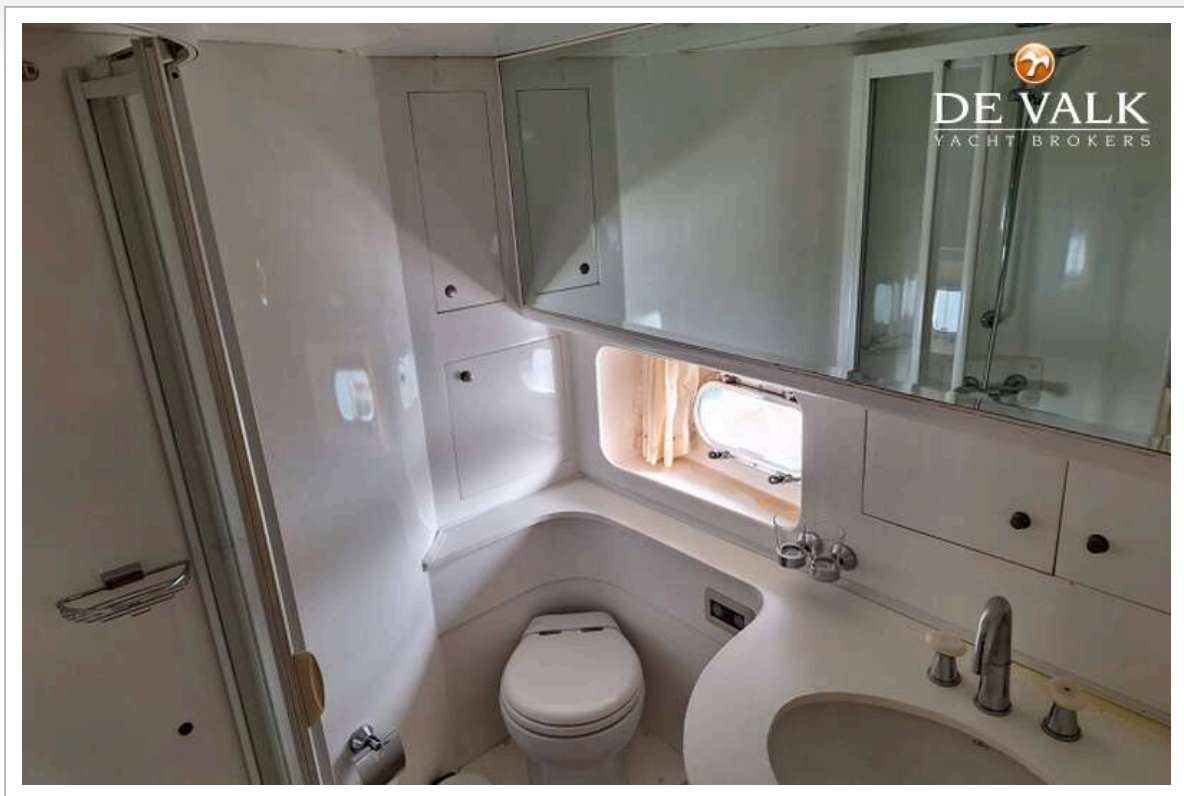




## ELEGANCE 76

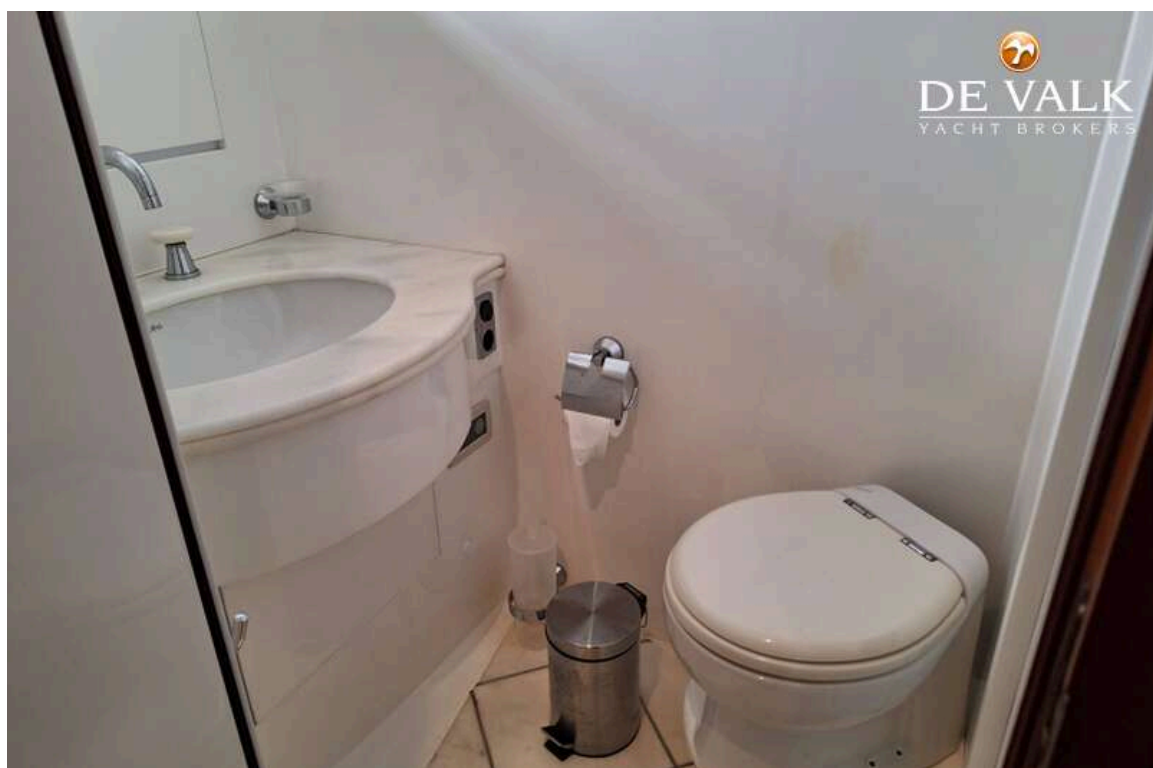


## ELEGANCE 76





## ELEGANCE 76



## ELEGANCE 76







