



DE VALK
YACHT BROKERS



ROMANZA MOTORSAILER 12 MS



DE VALK
YACHT BROKERS

ROMANZA MOTORSAILER 12 MS

BROKER'S COMMENTS

The Romanza motor-sailer is built by Van der Torre in the Netherlands, strong and well-sailing yacht. 130 HP engine, bow thruster, ketch rigged with steering wheel inside and outside. The yacht was overhauled extensively in 2014 and in 2021; engine / rigging / electrics / hull painted etc . Provided with excellent navigation instruments, good power supplies; generator/solar panels . Lots of space inside, a cozy lounge/wheelhouse, spacious dinette with kitchen and large sleeping cabins. It is located in the middle of the Netherlands and can be viewed by appointment.

Ger Bayens

SPECIFICATIONS

Dimensions	11.20 x 3.70 x 1.50 (m)	Builder	Van der Torre Jachtbouw / Ammerstol
Built	1973	Cabins	2
Material	Steel	Berths	4
Engine(s)	1 x Ford Lehman 2725E diesel	Hp/Kw	130.00 (hp), 95.68 (kw)
Asking price	sold (VAT)	Lying	The Netherlands

CONTACT

Sales office	De Valk Thuishaven	Telephone	+31 35 5829042
Address	Marinaweg 8 (postal address) 1361 AC Almere NL	E-mail	thuishaven@devalk.nl

DISCLAIMER

These particulars are given in good faith as supplied but cannot be guaranteed.



ROMANZA MOTORSAILER 12 MS

GENERAL

Model	ROMANZA MOTORSAILER 12 MS
Type	motorsailer
LOA (m)	11,20
Beam (m)	3,70
Draft (m)	1,50
Air draft (m)	11,55
Headroom (m)	1,92
Year built	1973
Builder	Van der Torre Jachtbouw / Ammerstol
Country	The Netherlands
Displacement (t)	20
Ballast (tonnes)	yes
Hull material	steel
Hull colour	green
Hull thickness (mm)	6
Hull shape	S-bilged
Keel type	long keel
Superstructure material	steel
Superstructure (mm)	5
Deck plate thickness (mm)	5
Rubbing strake	steel
Deck material	twaron
Deck finish	non-skid paint
Superstructure deck finish	paint
Cockpit deck finish	non-skid paint
Antifouling (year)	June 2021
Window frame	aluminium Hora, 2 opening windows
Window material	tempered glass
Portholes	brass
Insulation	yes



ROMANZA MOTORSAILER 12 MS

Fuel tank (litre)	steel 1000
Fuel tank 2 (litre)	steel 1000
Level indicator (fuel tank)	gauge glass
Freshwater tank (litre)	600
Blackwater tank (litre)	polyethylene 60
Blackwater tank extraction	deck extraction + uw line
Wheel steering	hydraulic
Inside helm position	yes
Outside helm position	hydraulic
More info on paintwork	deck & superstructure painted with 2-component paint (2021)

ACCOMMODATION

Cabins	2
Berths	4
Interior	teak
Layout	two cabins, dinette/galley, pilot-house/saloon, toilet
Floor	carpet
Aft deck	yes
Pilot house/deck saloon	yes
Headroom saloon (m)	1,93
Sliding roof	manual
Heating	diesel ducted hot air Webasto EVO 40 24V (2022)
Navigation center	yes
Chart table	yes
Aft Cabin	yes
Dinette	yes
Galley	yes
Countertop	plastic Marmer &
Sink	stainless steel
Cooker	calor gas Gimeg 4-pits
Fridge	with a freezer compartment Indel B / 24V



ROMANZA MOTORSAILER 12 MS

Hot water system	220V + engine
Water pressure system	electrical
Owners cabin	double bed
Bed length (m)	2,00 x 1,35
Wardrobe	hanging/drawers/shelves
Toilet	en suite
Toilet system	electric Jabco (2021)
Wash basin	at the toilet
Guest cabin 1	v-bed
Bed length (m)	2,10 x 076
Wardrobe	yes
Toilet	shared

MACHINERY

No of engines	1
Make	Ford Lehman
Type	2725E
HP	130
kW	95.68
Fuel	diesel
Year of overhaul	By official engine overhaul company for Euro 9,600. 2014
Maximum speed (kn)	7
Cruising speed (kn)	6
Engine hours	3459
Engine cooling system	closed keelcooling
Drive	shaft
Shaft seal	yes
Engine controls	bowden cable
Gearbox	hydraulic Velvet Drive
Bowthruster	electric VETUS 75 KGF 24V (2012)
Exhaust	dry



ROMANZA MOTORSAILER 12 MS

Thrust bearing	yes
Propeller type	fixed
Propeller shaft material	stainless steel
Shaft lubrication	oilbath
Manual bilge pump	yes
Electric bilge pump	yes
Electrical installation	24/12/230V
Generator	silent separator Fisher Panda 4000 S / 3,8 kVA
Running hours generator	308
Batteries	5
Start battery	2x 105 Ah
Service battery	2x 225 Ah (2018)
Generator battery	1x 66 Ah
Battery monitor	Victron BMV-700
Battery charger	Victron 12V/7A
Inverter	Samlex 24-12V 16A
Battery charger/inverter	Victron Quatro 24/3000/70 (2012)
Solar panel	2x 51W
Shorepower	with cable 220V System renewed (2014)

NAVIGATION

Electric compass	Raytheon ST 40
Depth sounder/log	NASA Clipper Duet
Repeater	Simrad
VHF	yes
VHF handheld	yes
Autopilot	Simrad
Plotter/GPS	touchscreen Simrad NSS7
Navtex	Mörer Weather Infobox Wib2
AIS receiver	Vesper Marine AIS Watchmate
EPIRB	Battery has expired



Navigation lights

yes

EQUIPMENT

Cockpit chairs

yes

Boarding ladder

stainless steel

Anchor

Danforth

Anchor chain

60 mtr.

Windlass

manual

Capstan

yes

Deck wash

yes

Sea railing

steel

Grab rail (superstructure)

stainless steel

Railing side opening gates

stainless steel

Pushpit

yes

Pulpit

yes

Life raft

valise (or bag) To be surveyed

Lifebuoy

yes

Wiper

2014

Horn

yes

Radar reflector

yes

Fenders

yes

Mooring lines

yes

TV

yes

Radio-cd player

yes

Speakers in salon

yes

Clock - barometer

yes

Fire extinguisher

yes

Latest extinguisher survey

unknown

RIGGING

Rigging

ketch



ROMANZA MOTORSAILER 12 MS

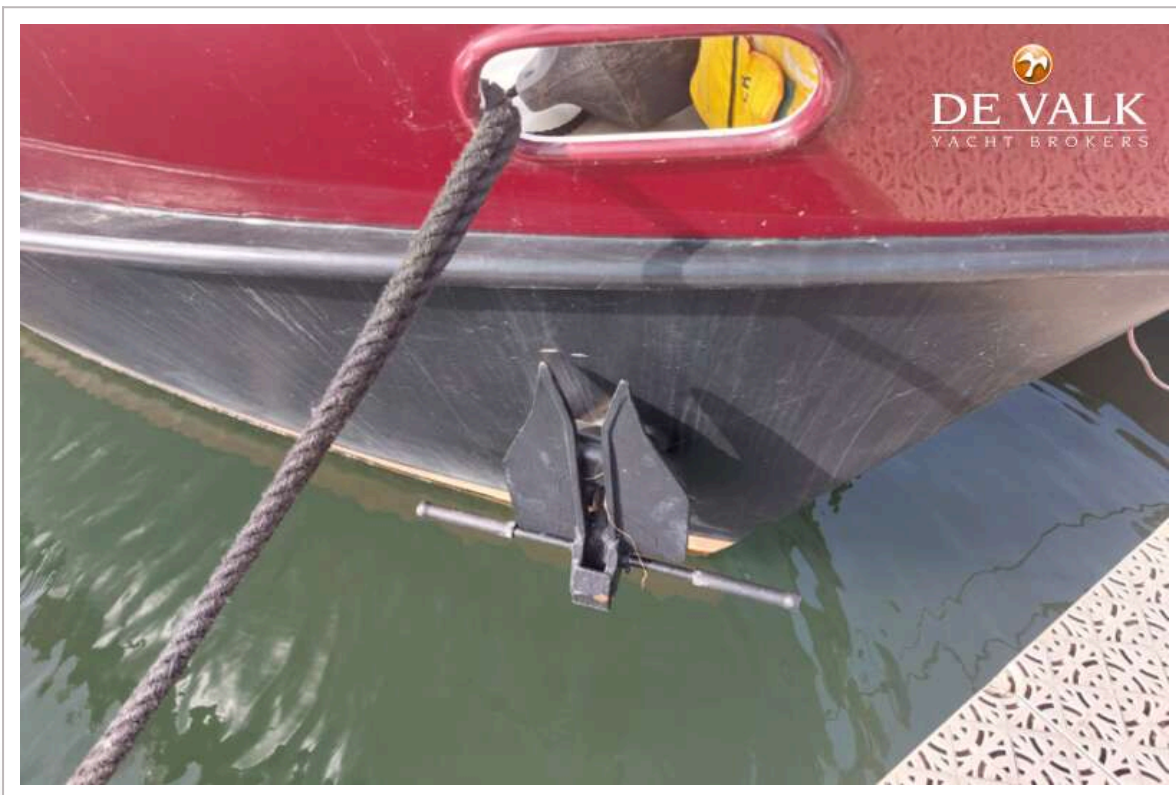
Standing rigging	wire Replaced (2018)
Brand mast	Conispar
Material mast	aluminium
Spreaders	1 set
Mast lowering system	Stainless steel rotating mast feet, no further mast lowering system material
Mainsail	yes
Mainsail cover	yes
Mizzen	yes
Mizzen sailcover	yes
Genoa	yes
Genoa furler	yes
Stormjib	yes
Reefing System	slabreefing
Boomvang	tackle For the main sail
Primary sheet winch	2x
Halyard winches	2x
Extra info	All the sails are old, but in good condition, cleaned and serviced in 2021



ROMANZA MOTORSAILER 12 MS



ROMANZA MOTORSAILER 12 MS



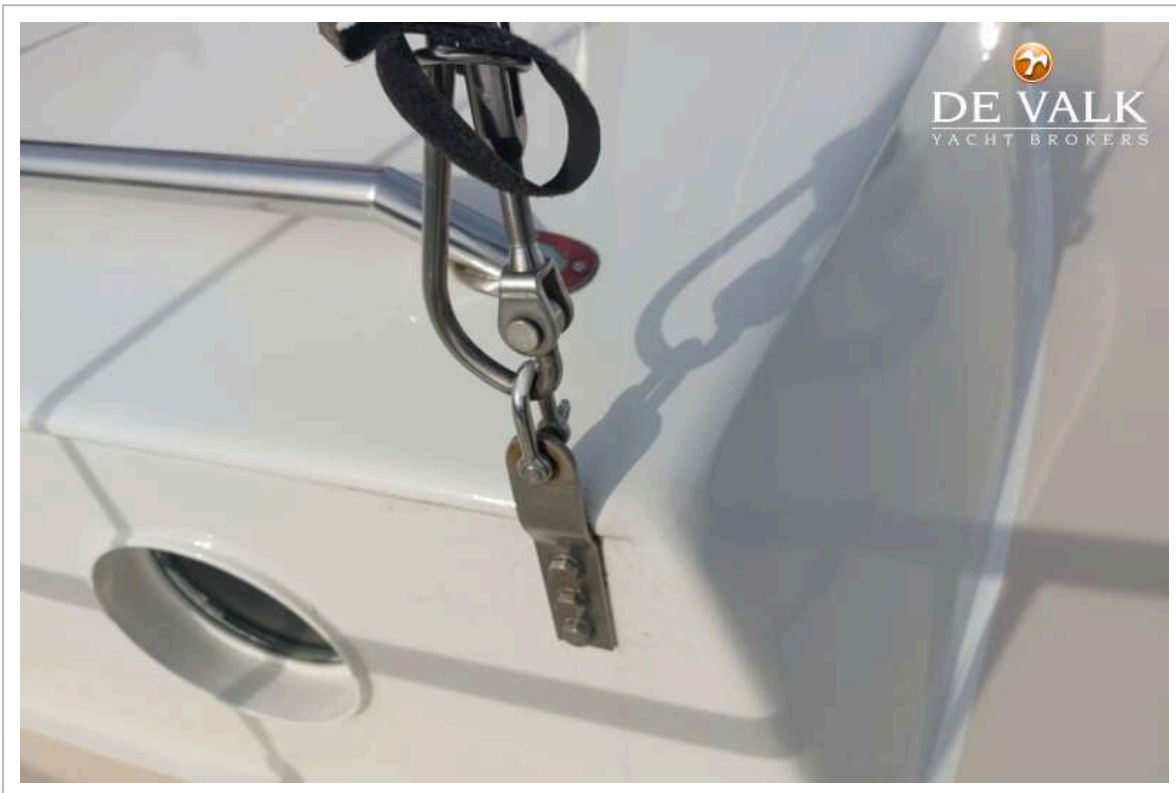
ROMANZA MOTORSAILER 12 MS



ROMANZA MOTORSAILER 12 MS



ROMANZA MOTORSAILER 12 MS



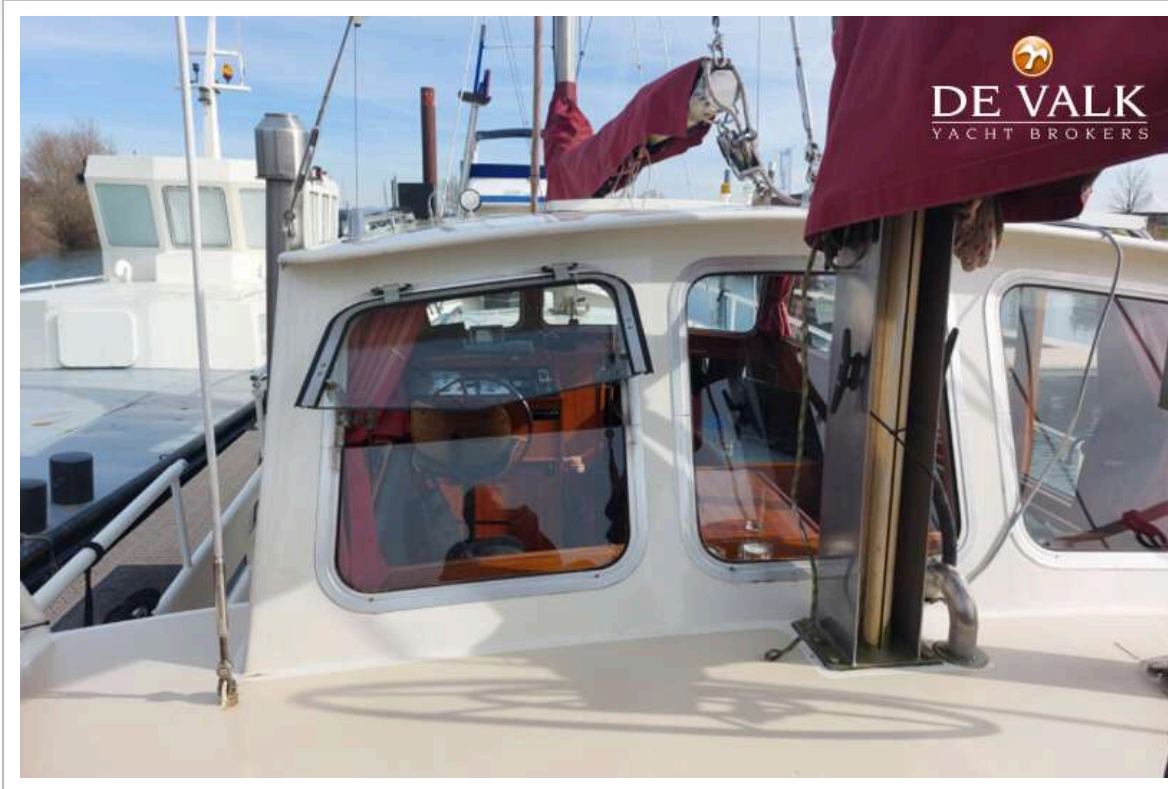
ROMANZA MOTORSAILER 12 MS



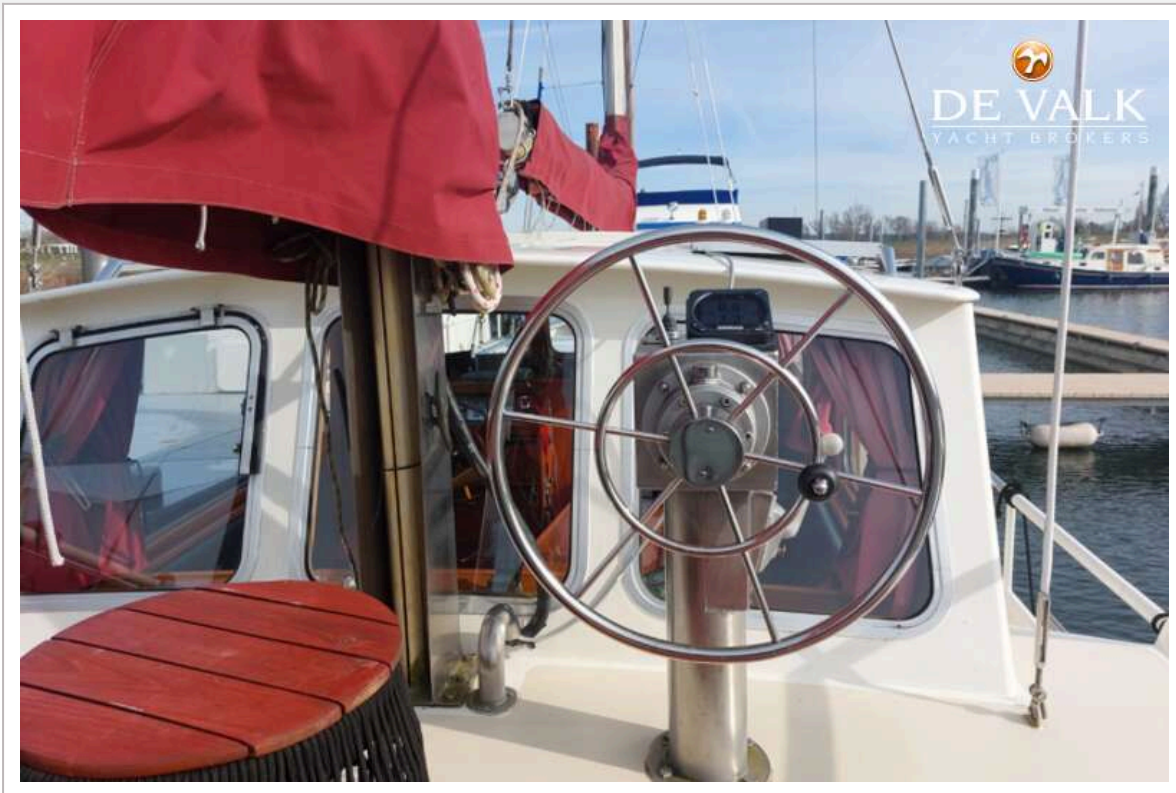
ROMANZA MOTORSAILER 12 MS



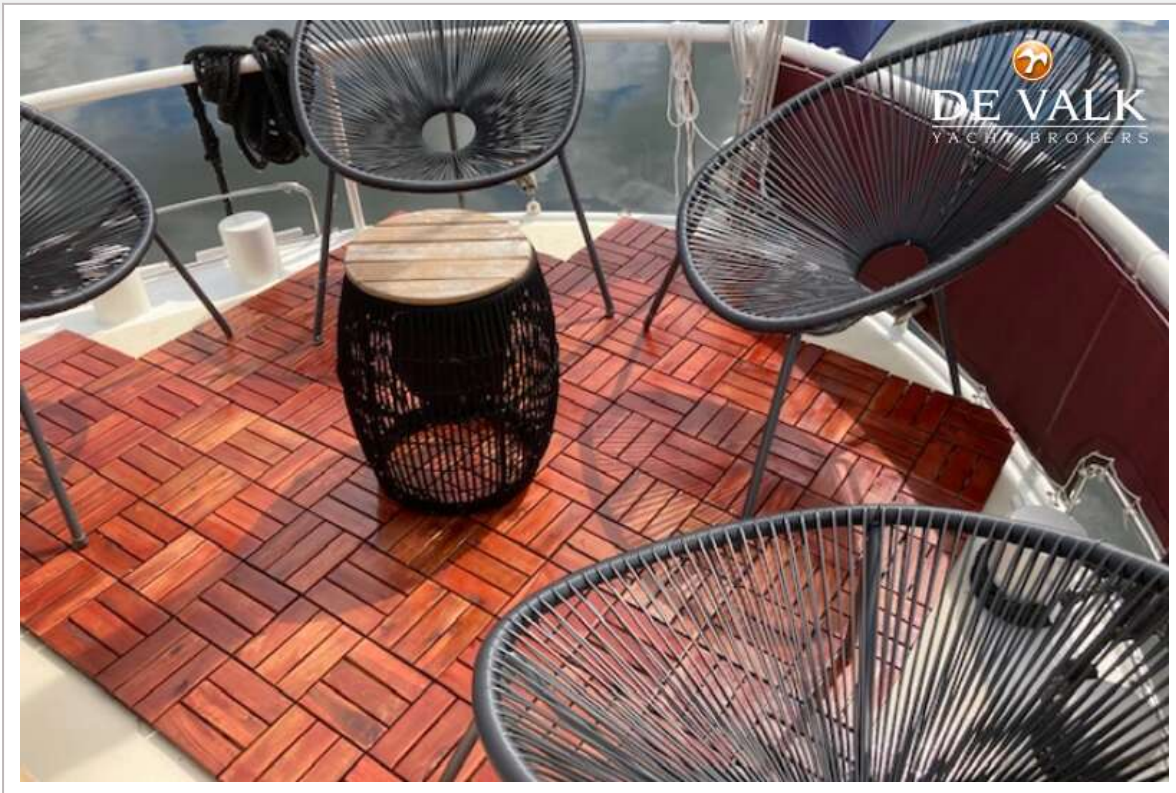
ROMANZA MOTORSAILER 12 MS



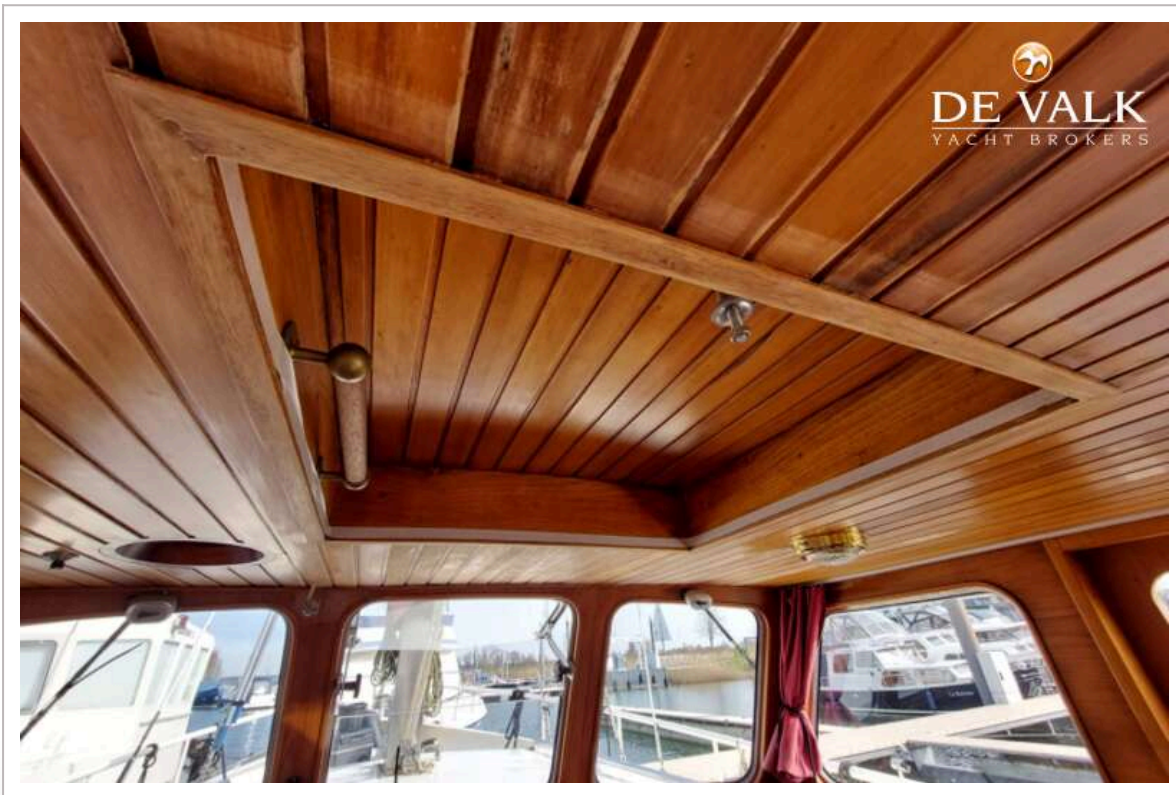
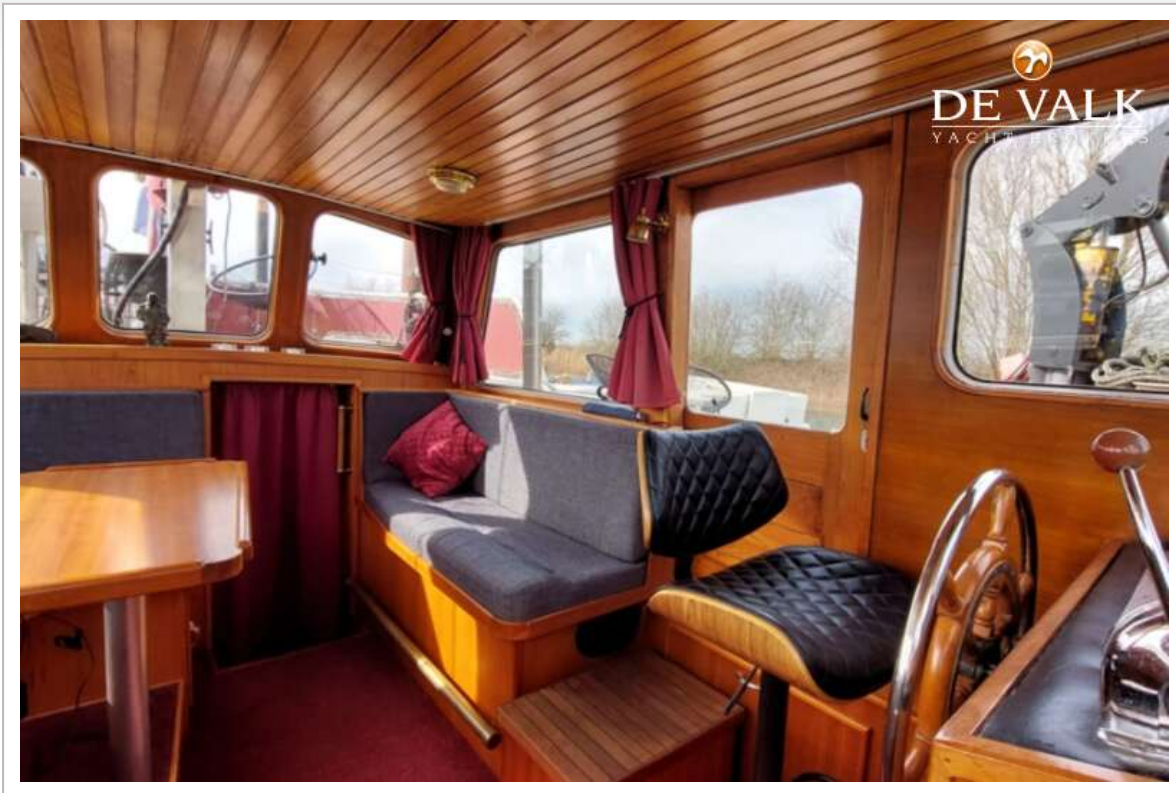
ROMANZA MOTORSAILER 12 MS



ROMANZA MOTORSAILER 12 MS



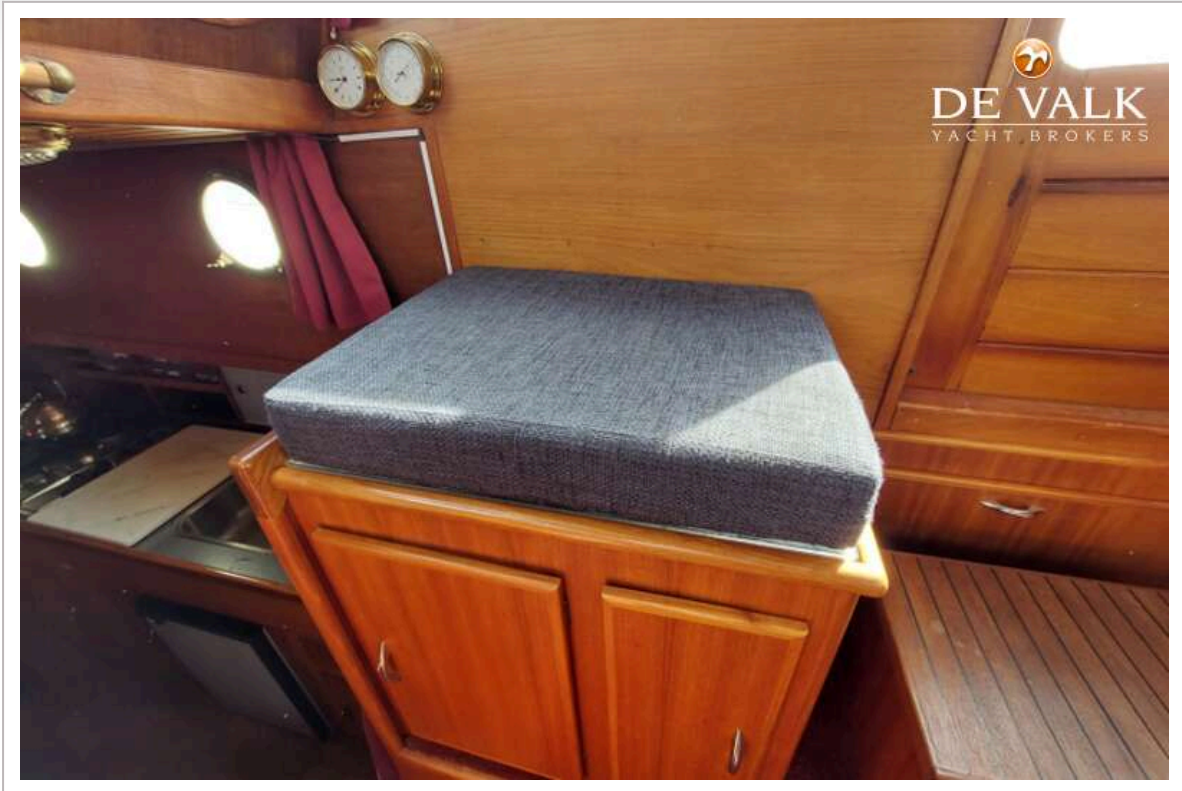
ROMANZA MOTORSAILER 12 MS



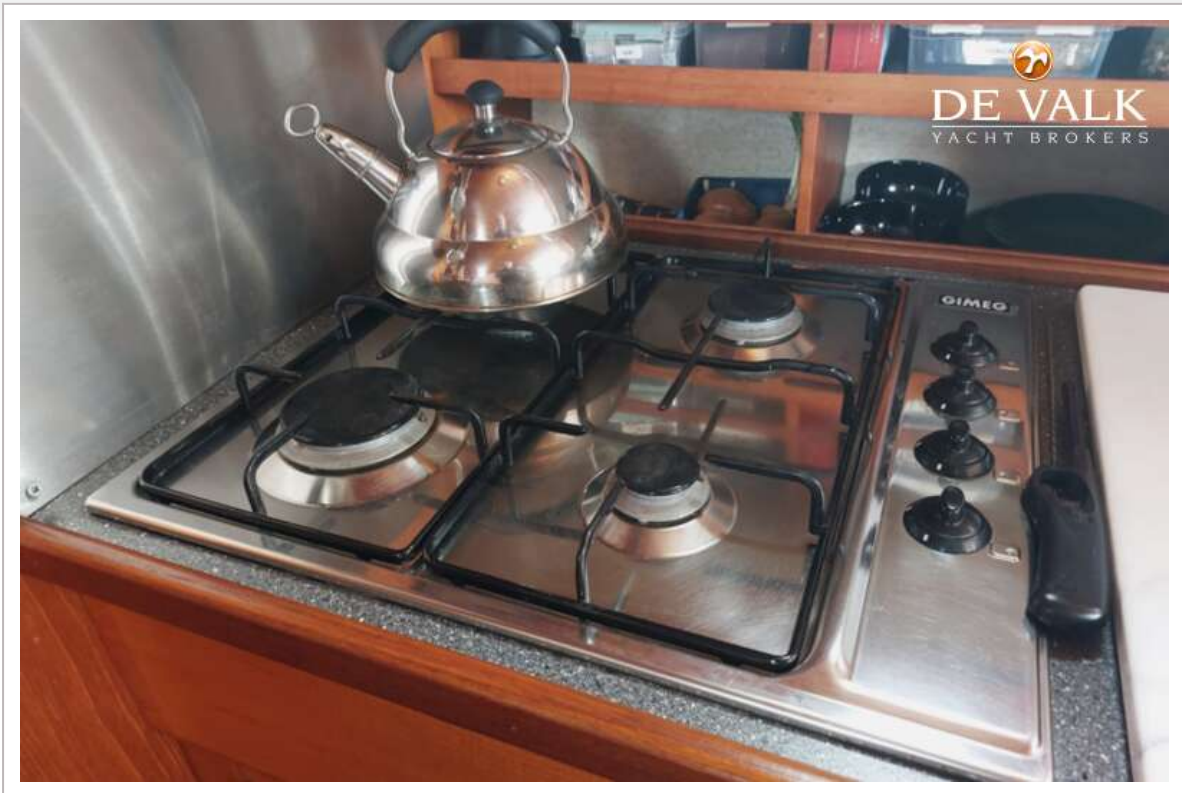
ROMANZA MOTORSAILER 12 MS



ROMANZA MOTORSAILER 12 MS



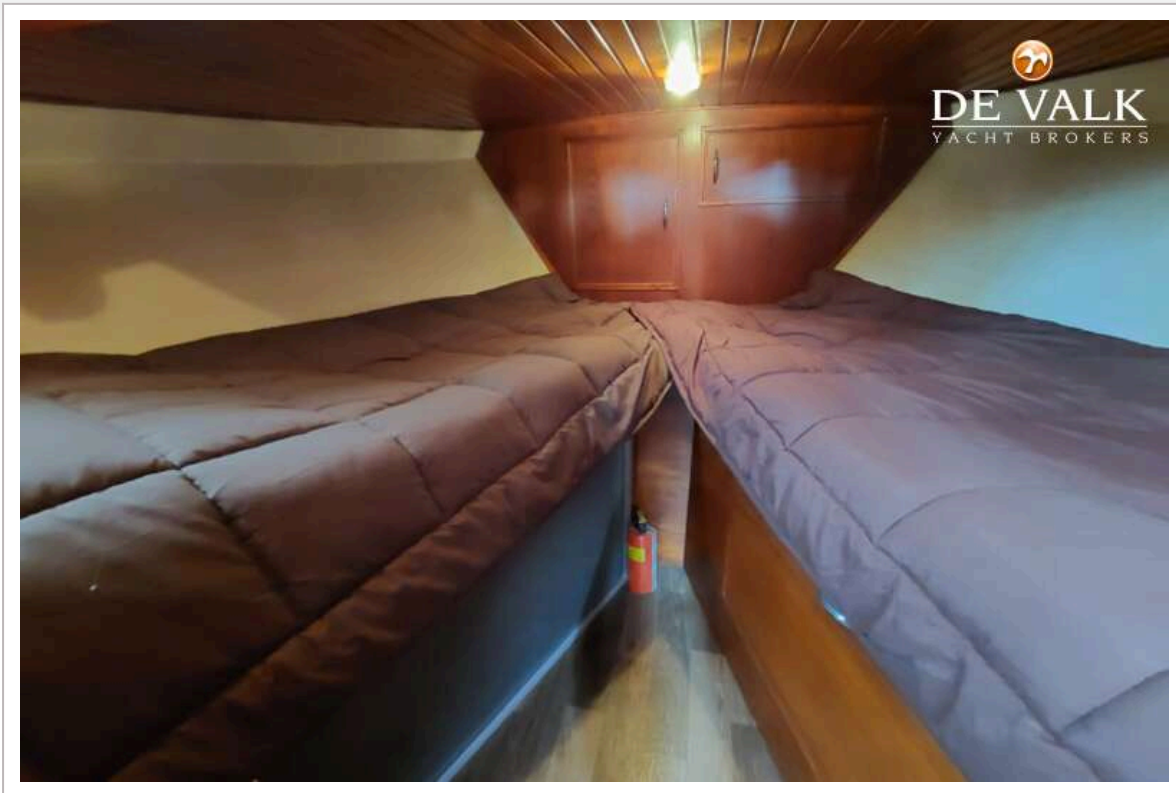
ROMANZA MOTORSAILER 12 MS



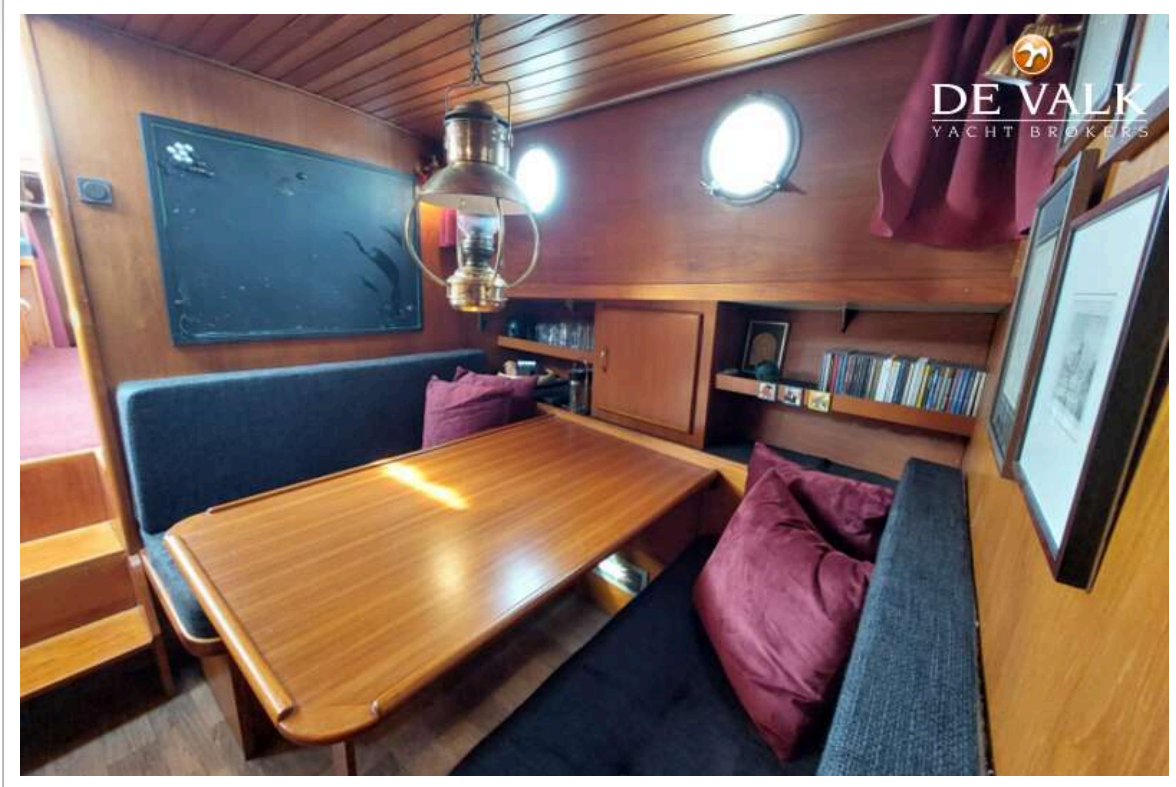
ROMANZA MOTORSAILER 12 MS



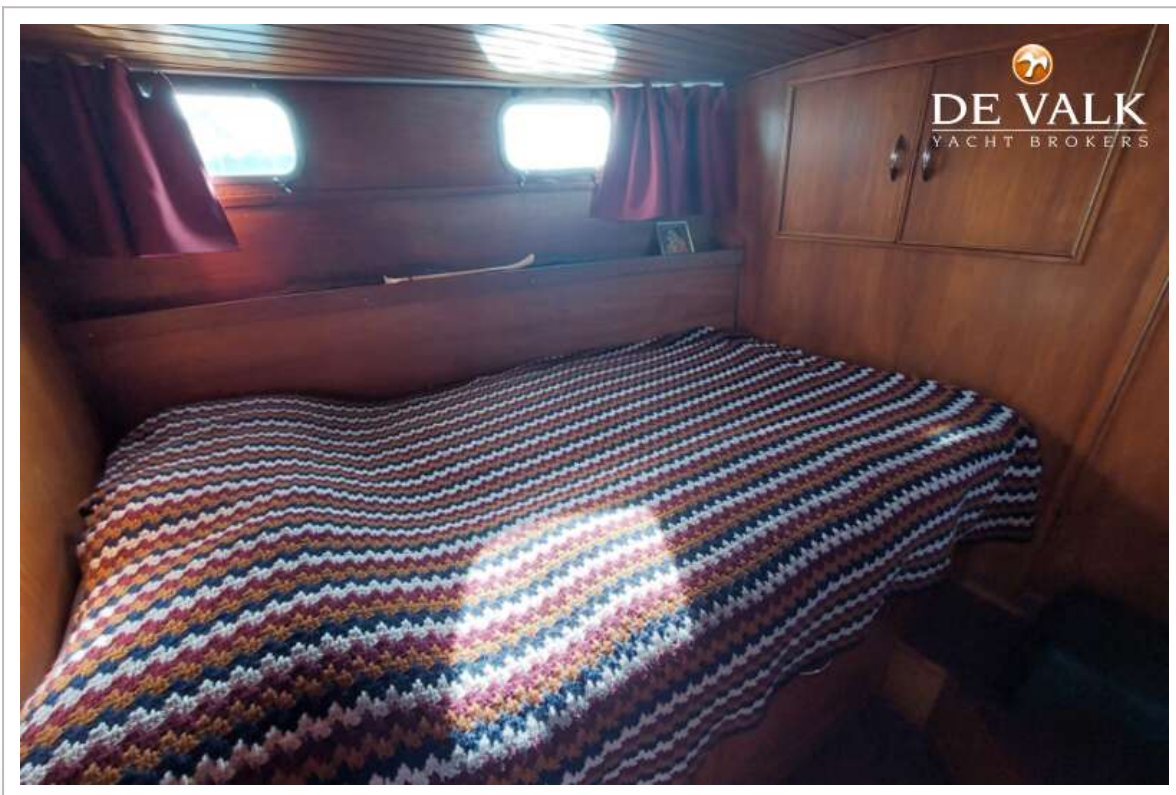
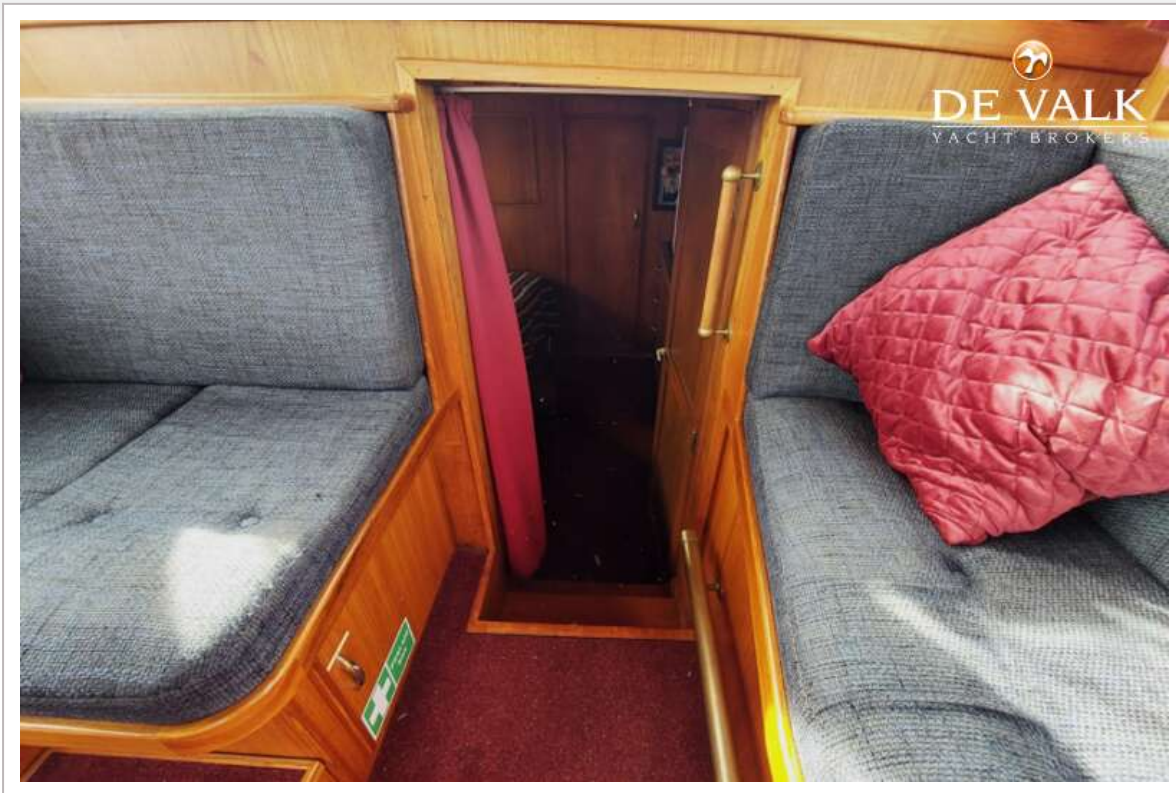
ROMANZA MOTORSAILER 12 MS



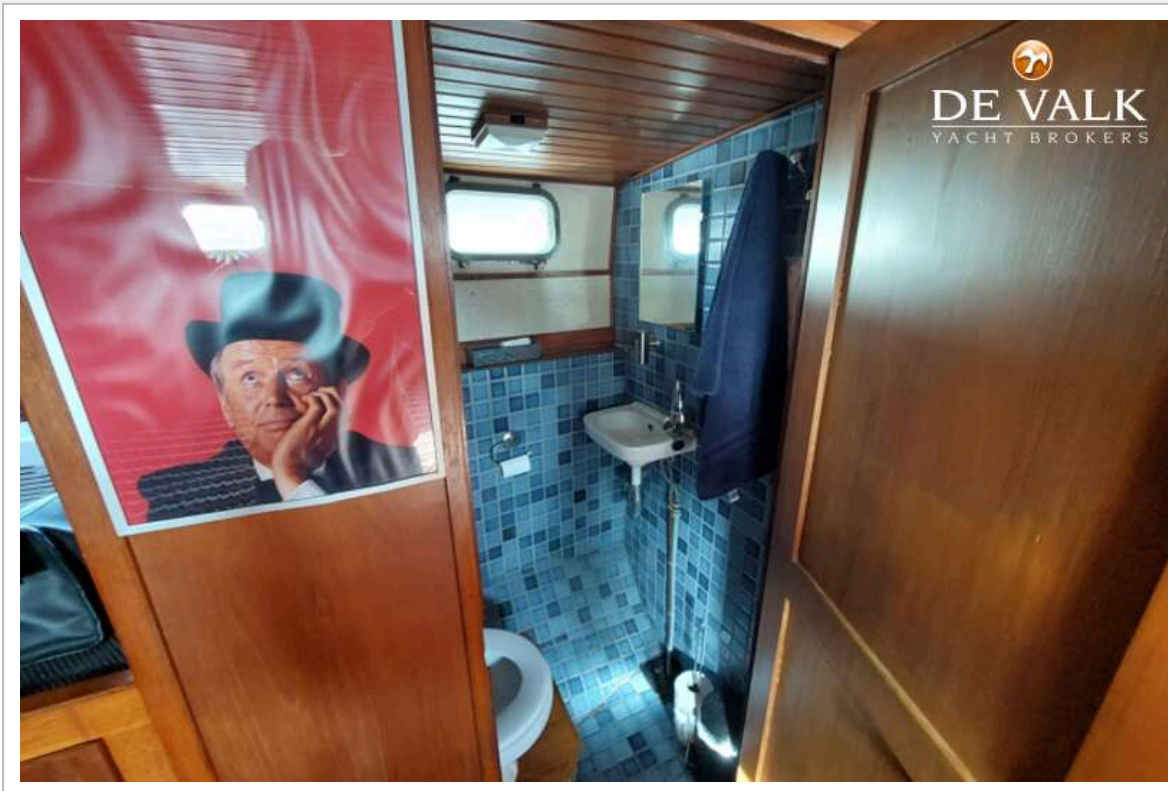
ROMANZA MOTORSAILER 12 MS



ROMANZA MOTORSAILER 12 MS



ROMANZA MOTORSAILER 12 MS



ROMANZA MOTORSAILER 12 MS



ROMANZA MOTORSAILER 12 MS



ROMANZA MOTORSAILER 12 MS

