



BARKAS 1500

BARKAS 1500

BROKER'S COMMENTS

Very well maintained yacht. Designed and built for living on board. She has proven herself already on the inland waterways as a very comfortable cruiser during the beautiful trips on the Dutch, Belgian and France waters with her current still first owners.

Reinier van der Wolf

SPECIFICATIONS

Dimensions	14.80 x 4.65 x 1.45 (m)	Builder	E.W. Bouma Jachtbouw
Built	1996	Cabins	2
Material	Steel	Berths	6
Engine(s)	1 x Vetus Deutz DTA 64475 A Diesel	Hp/Kw	192.00 (hp), 141.00 (kw)
Asking price	sold (VAT)	Lying	at sales office

CONTACT

Sales office	De Valk Monnickendam B.V.	Telephone	+31 (0)299 65 63 50
Address	Hoogedijk 6 1145 PM Katwoude NL	E-mail	monnickendam@devalk.nl

DISCLAIMER

These particulars are given in good faith as supplied but cannot be guaranteed.



BARKAS 1500

GENERAL

Model	BARKAS 1500
Type	motor yacht Motor
LOA (m)	14,80
LWL (m)	13,45
Beam (m)	4,65
Draft (m)	1,45
Air draft (m)	3,85
Year built	1996
Builder	E.W. Bouma Jachtbouw
Country	The Netherlands
Designer	L.M. Huitema - Kropswolde
Displacement (t)	31
Hull material	steel
Hull colour	Black
Hull thickness (mm)	6 mm
Hull shape	Multi hard chine
Superstructure material	Steel 5 mm
Deck finish	Anti-slip paint 2001
Window frame	Aluminium
Window material	Double glazing
Fuel tank (litre)	Steel 1.100 + 2x 450 litres
Freshwater tank (litre)	Steel 1.700 litres
Greywater tank (litre)	Steel 250 litres
Wheel steering	Hydraulic Vetus MTP.42
Outside helm position	Hydraulic
More info on paintwork	Hull painted in 2001 by Radius in Irnsum - Holland
Extra info	Launched in 1997, interior by Visser in Woudsend - Holland

ACCOMMODATION

Cabins	2
--------	---



BARKAS 1500

Berths	4 (+2 in salon) 6
Interior	Teak
Saloon	Large settee and steering position
Heating	Central heating
Aft Cabin	yes
Dinette	yes
Dinette to convert into berth	yes
Galley	L-shaped
Sink	Stainless steel
Cooker	Electric Candy (220V)
Extractor	Candy
Microwave	Samsung (220V - 2002)
Fridge	Coolmatic (24V - 2000)
Hot water system	220v + engine Vetus 80 litres
Water pressure system	Electrical
Dishwasher	Candy (1997)
Owners cabin	French bed
Bathroom	yes
Toilet	Electric 24V
Wash basin	yes
Shower	yes
Guest cabin 1	Bunk bed
Washing machine	yes
Dryer	Bosch
Extra info	Working bench + a lot of storage space in aft cabin

MACHINERY

No of engines	1
Make	Vetus Deutz
Type	DTA 64475 A
HP	192,00



BARKAS 1500

kW	141,00
Fuel	diesel
Year installed	1996
Maximum speed (kn)	9
Range (nm)	yes
Engine hours	1862
Engine cooling system	Freshwater heatexchanger
Drive	shaft
Gearbox	Hydraulic
Bowthruster	Electric Vetus 130 kgf 24V (1997)
Propeller type	Fixed
Propeller blades	4
Propeller shaft material	Stainless steel
Electric bilge pump	24V
Electrical installation	12V/24V/220V
Generator	Vetus M414 10 kVA (1997)
Start battery	1x 55 Amp (1997)
Service battery	3x 108 Amp (2002) + 1x Traction 520 Amp (1997)
Battery charger	Victron 24V/75 Amp (1997)
Inverter	Victron 24V/3500W (1997)
Shorepower	yes

NAVIGATION

VHF	Sailor + VHF
Extra info	Vetus combi 3: echosounder and log, Vetus rudder indicator.

EQUIPMENT

Bow ladder	yes
Gangway	yes
Anchor	S/S
Anchor chain	yes



BARKAS 1500

Windlass	Electrical
Lifebuoy	yes
Wiper	Vetus 4x (1997)
Spare parts	yes
Clock - barometer	yes
Fire extinguisher	2x 3 kg - must be checked



BARKAS 1500



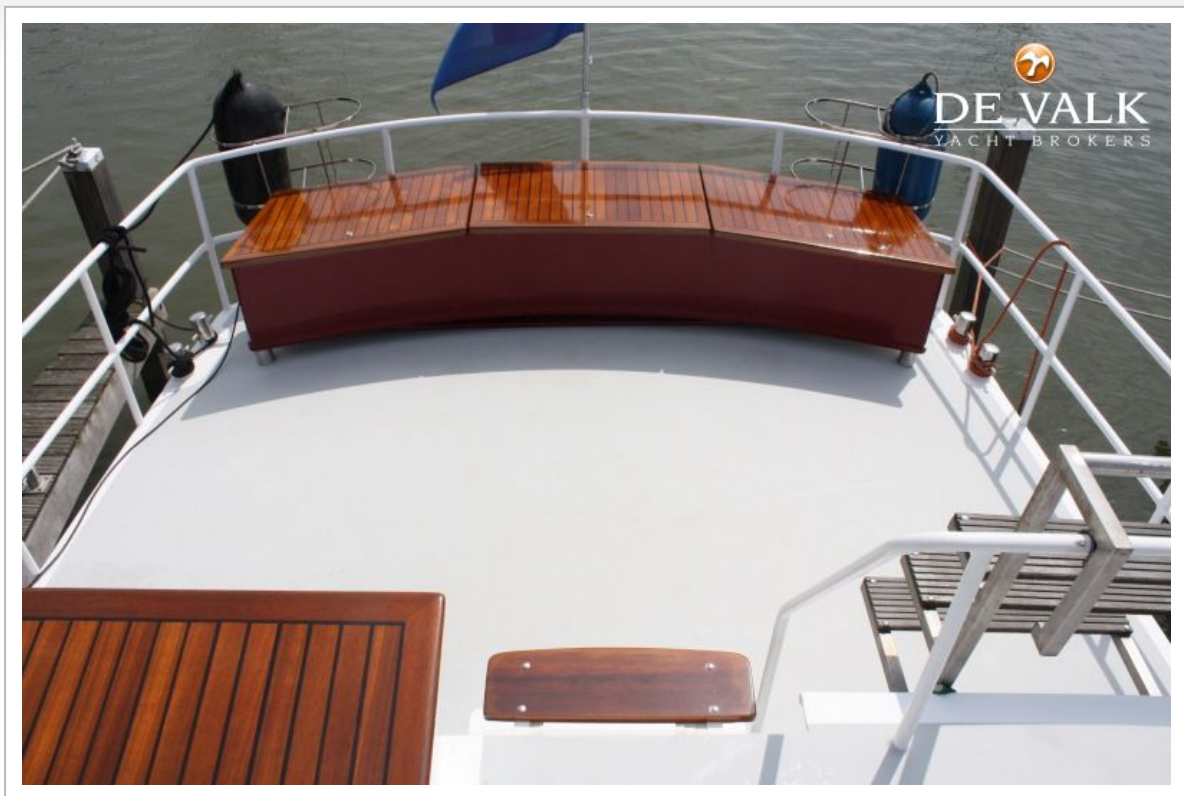
BARKAS 1500



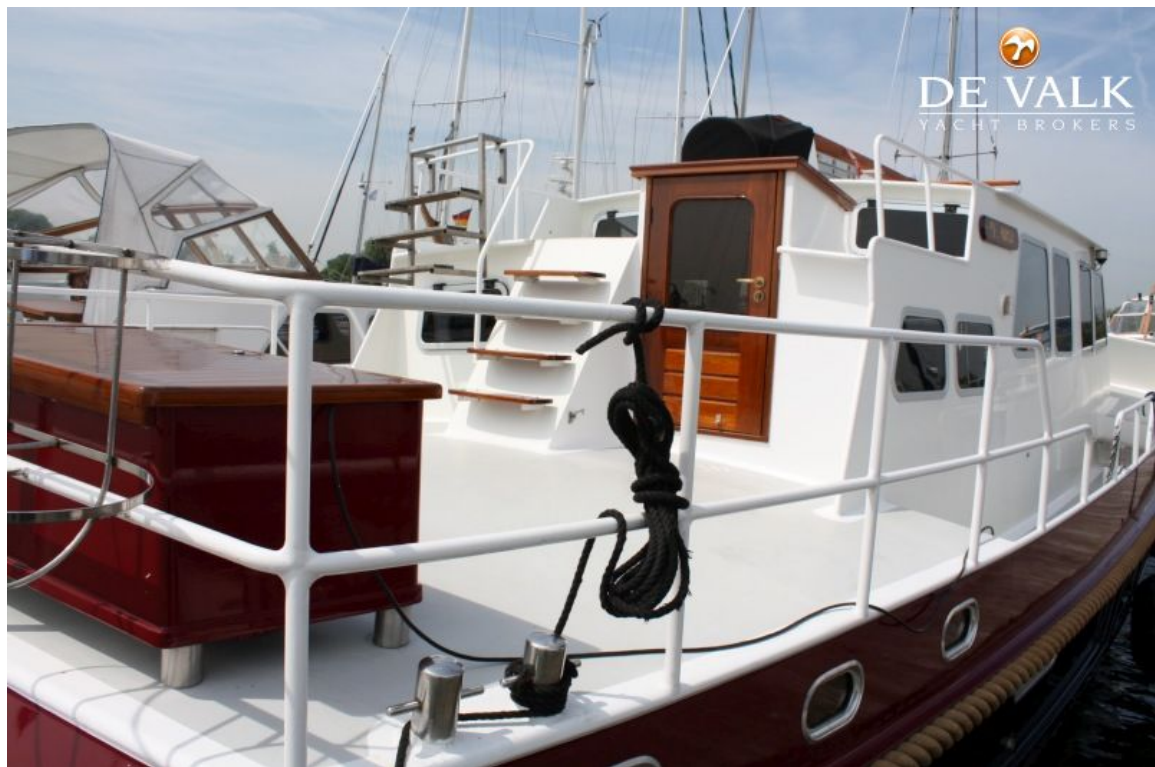
BARKAS 1500



BARKAS 1500



BARKAS 1500



BARKAS 1500



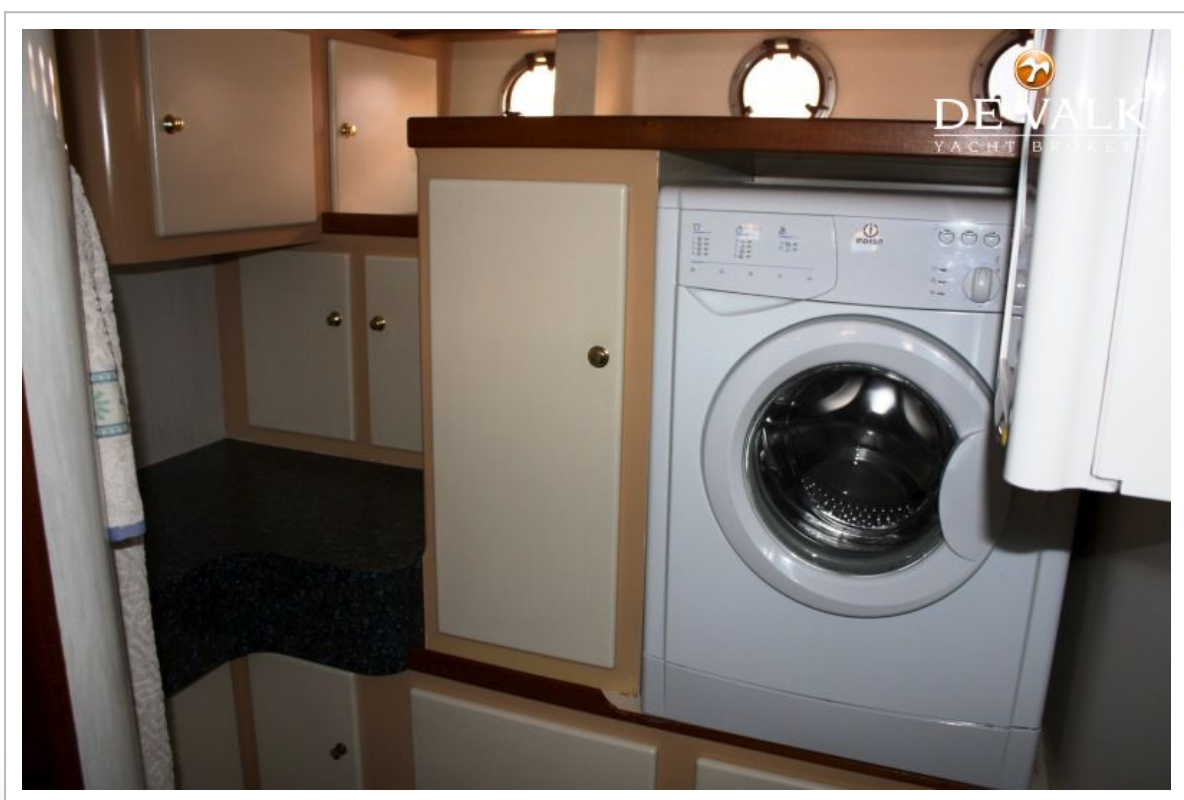
BARKAS 1500



BARKAS 1500



BARKAS 1500



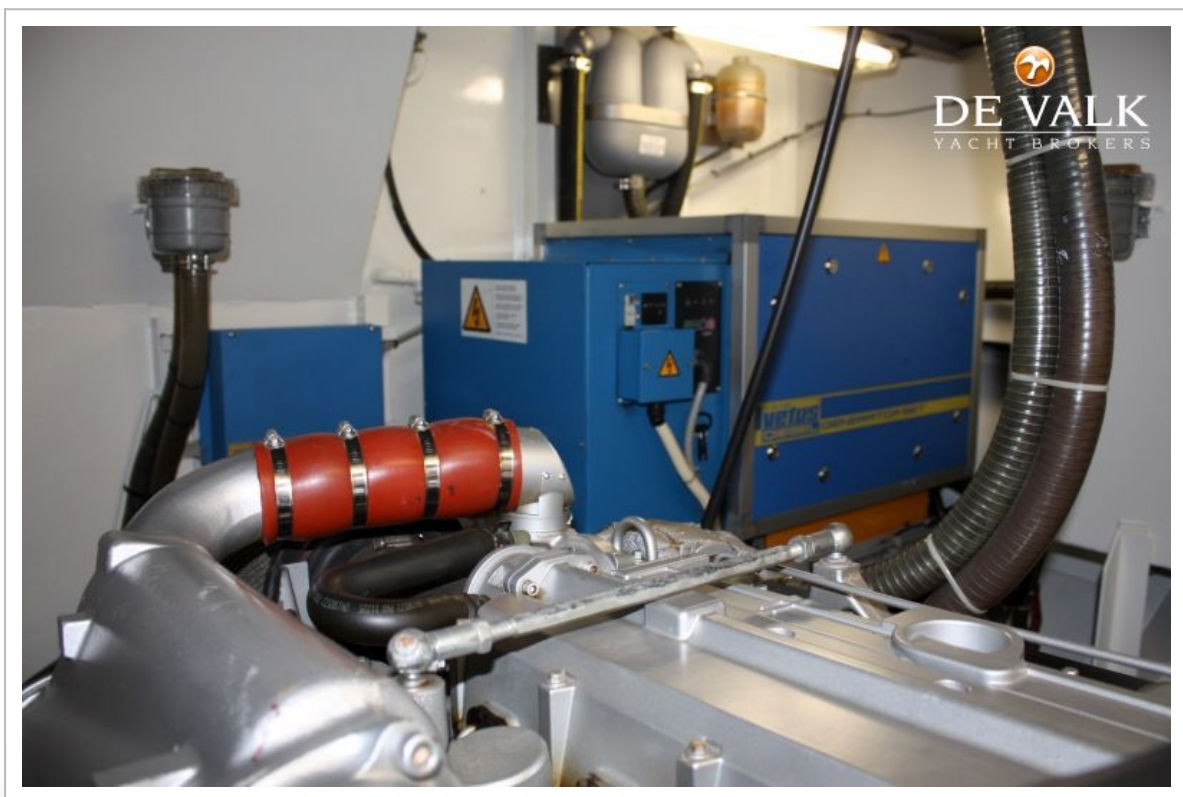
BARKAS 1500



BARKAS 1500



BARKAS 1500



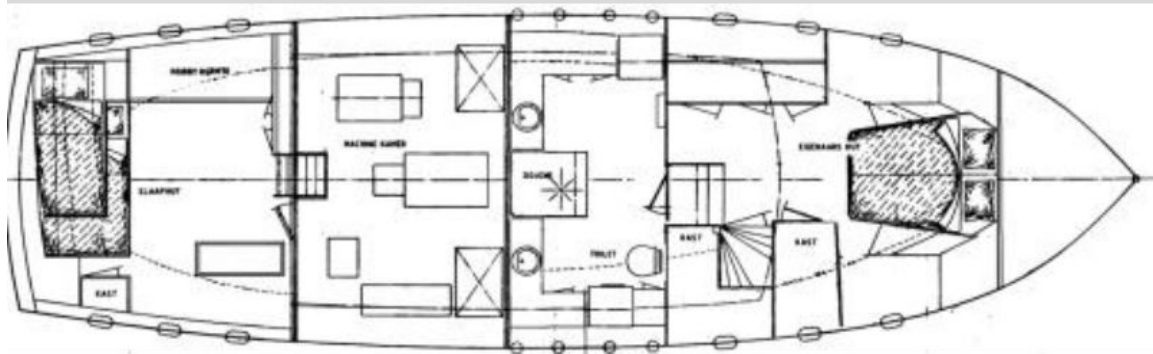
BARKAS 1500



BARKAS 1500



BARKAS 1500



BARKAS 1500

