



DE VALK

KOOPMANS 41



DE VALK  
YACHT BROKERS

BROKERAGE | CHARTER | BERTHS | FINANCE | INSURANCE | YACHT MANAGEMENT

## BROKER'S COMMENTS

This designs classic Koopmans 41 excels in seaworthiness, cruising performance and safety. The Koopmans 41 has a centreboard and center cockpit is owned by one family since new. She is fully equipped for long distance cruising with furling main and genoa both 2010 and 7 powered winches. She will be auctioned on July, 10th, 2023 in cooperation with YachtBid and Troostwijk. For further details and viewing days go to <https://bit.ly/YB-Koopmans41>. Starting price of the auction is € 50.000,-. Offers can be made from July, 3th, 2023 the website of Troostwijk Auctions.

*Hans Visser*

## SPECIFICATIONS

<b>Dimensions</b>	12.45 x 3.74 x 1,15 / 2.20 (m)	<b>Builder</b>	Aluboot
<b>Built</b>	1981	<b>Cabins</b>	3
<b>Material</b>	Aluminium	<b>Berths</b>	8
<b>Engine(s)</b>	1 x Perkins 4235 diesel	<b>Hp/Kw</b>	72.00 (hp), 52.99 (kw)
<b>Asking price</b>	sold (VAT )	<b>Lying</b>	at sales office

## CONTACT

<b>Sales office</b>	De Valk Hindeloopen B.V.	<b>Telephone</b>	+31 514 52 40 00
<b>Address</b>	Oosterstrand 1 8713 JS Hindeloopen NL	<b>E-mail</b>	hindeloopen@devalk.nl

## DISCLAIMER

These particulars are given in good faith as supplied but cannot be guaranteed.



## GENERAL

Model	KOOPMANS 41
Type	sailing yacht
LOA (m)	12,45
LWL (m)	10,20
Beam (m)	3,74
Draft (m)	2,20
Draft min (m)	1,15
Year built	1981
Builder	Aluboot
Country	The Netherlands
Designer	Dick Koopmans Sr.
Displacement (t)	11,8
Ballast (tonnes)	5,4
Hull material	aluminium
Hull colour	white
Hull thickness (mm)	Approx. 6 mm
Hull shape	round-bilged
Keel type	centreboard
Superstructure material	Aluminium / wood
Superstructure (mm)	Approx. 4 mm aluminium and wood
Rubbing strake	wood
Deck material	aluminium Needs service
Deck finish	teak Needs service
Superstructure deck finish	teak Needs service
Cockpit deck finish	teak Needs service
Antifouling (year)	2020
Dorades	3x
Window frame	aluminium
Window material	tempered glass
Deckhatch	3x Lewmar



Portholes	12
Insulation	Hull and frames are fully taped with flexible insulation materia
Fuel tank (litre)	aluminium 300 ltr.
Level indicator (fuel tank)	yes
Fuel daytank (litre)	yes
Freshwater tank (litre)	aluminium 300 ltr. in two tanks
Level indicator (freshwater)	yes
Blackwater tank (litre)	Yes
Level indicator (blackwater)	BEP marine
Blackwater tank extraction	deck extraction + uw line
Wheel steering	yes
Outside helm position	yes
Emergency tiller	yes
More info on hull	Center cockpit
More info on paintwork	yes
Extra info	There are leaks from the upper deck this is reason for auction
Extra info	Drawing numbers 199-227 available for purchase at architect

## ACCOMMODATION

Cabins	3
Berths	8
Interior	teak
Floor	teak and holly
Saloon	yes
Headroom saloon (m)	1.90 mtr.
Heating	central heating
Navigation center	yes
Chart table	yes
Aft Cabin	yes
Convertible berth	2x
Galley	yes



Countertop	wood
Sink	stainless steel Double
Cooker	calor gas   1x Eno two burner and 1x Enders 2 burner
Fridge	Frigomatic with Barco compressor
Hot water system	220V + engine
Water pressure system	electrical
Manual and/or foot pump	yes
Owners cabin	v-bed   Forward cabin
Bed length (m)	Approx. 1.90 mtr.
Wardrobe	drawers and shelves
Bathroom	en suite
Toilet	Jabsco
Toilet system	electric
Wash basin	yes
Shower	yes
Guest cabin 1	v-bed   aft cabin
Bed length (m)	Approx. 1.90 mtr.
Wardrobe	drawers and shelves
Bathroom	shared
Toilet	yes
Toilet system	manual
Wash basin	yes
Guest cabin 2	bunk bed
Bed length (m)	Approx. 1.90 mtr.
Wardrobe	drawers and shelves

## MACHINERY

No of engines	1
Make	Perkins
Type	4235
HP	72



<b>kW</b>	52.99
<b>Fuel</b>	diesel
<b>Engine cooling system</b>	freshwater heat exchanger
<b>Drive</b>	shaft
<b>Shaft seal</b>	yes
<b>Engine controls</b>	bowden cable
<b>Gearbox</b>	hydraulic
<b>Bowthruster</b>	electric
<b>Exhaust</b>	watercooled
<b>Propeller shaft material</b>	stainless steel
<b>Electric bilge pump</b>	yes
<b>Electrical installation</b>	12 & 24 V DC and 220 V AC
<b>Batteries</b>	Lithium Ion for service
<b>Start battery</b>	yes
<b>Service battery</b>	yes
<b>Battery monitor</b>	yes
<b>Battery charger</b>	Blue power 12 V 7 A
<b>Battery charger/inverter</b>	Mastewrvolt Ultra 24V 3500 W 220 V
<b>Diode battery combiners</b>	yes
<b>Shorepower</b>	yes
<b>Insulation transformer</b>	yes

## NAVIGATION

<b>Compass</b>	Aqua Meter
<b>Multi control display</b>	2x Autohelm MULTI
<b>Depth sounder/log</b>	Autohelm TRIDATA
<b>Windset</b>	Autohelm VMG   Autohelm WIND
<b>VHF</b>	yes
<b>VHF handheld</b>	Raymarine RAY240E
<b>Autopilot</b>	ST6002 display wit X 30 Smartpilot
<b>Radar</b>	Raymarine needs service



Radar/GPS/plotter	Raymarine E120 inside & E80 outside Raymarine E80 outside
Weather receiver	Furuno DFAX
Wifi antenna	Wifi network
AIS transceiver	yes
Radio receiver	Lowe Communications Receiver HF-150
Navigation lights	yes
Extra info	Antenna Distribution Box AV 205
Extra info	Router

## EQUIPMENT

Fixed windscreen	yes
Sprayhood	yes
Cockpit cover	yes
Winter cover	yes
Anchor	Bruce   Stainless steel
Anchor chain	yes
Windlass	electrical   Lewmar
Capstan	yes
Deck wash	yes
Dinghy	inflatable Folded in storage for last 6 years
Outboard support	yes
Sea railing	yes
Grab rail (superstructure)	teak
Railing side opening gates	yes
Pushpit	yes
Pulpit	yes
Life raft	container
Last life raft survey	2023
Safety lines on deck	yes
Radar reflector	yes
Fenders	yes



Mooring lines

yes

## RIGGING

Rigging

sloop-cutter

Standing rigging

wire | new 2009

Brand mast

Seldén

Material mast

aluminium | deck stepped

Spreaders

Double set

Mainsail

Furling main approx 30 m²

Stoway mast

Electric Seldén

Cutterstay

yes

Genoa I

40 m² yankee

Genoa furler

Furlex 300E | Electric

Spinnaker

Parasailor 130 m²

Staysail furler

Manual

Genoa staysail

20 m²

Yankee

40 m²

Stormjib

6 m²

Reefing System

main in-mast furling | Electric

Boomvang

gasspring Seldén

Primary sheet winch

2 x Lewmar 48 electric ST

Secondary sheet winch

2 x Lewmar 40 electric ST

Genoa sheetwinches

2 x Lewmar 48 2 speed ST

Halyard winches

3 x Lewmar 30 ST | two on the mast

Multifunctional winches

MSM power Winch 44 REW for mainsheet wind and unwind

Winchcovers

1 x

Spi-pole

2 x carbon

Isolated backstay

yes







BROKERAGE | CHARTER | BERTHS | FINANCE | INSURANCE | YACHT MANAGEMENT



**DE VALK**  
YACHT BROKERS



**This yacht will be auctioned,  
for further details please visit [www.devalk.nl](http://www.devalk.nl)**

**Dit schip zal worden geveild,  
voor meer informatie gaat u naar [www.devalk.nl](http://www.devalk.nl)**

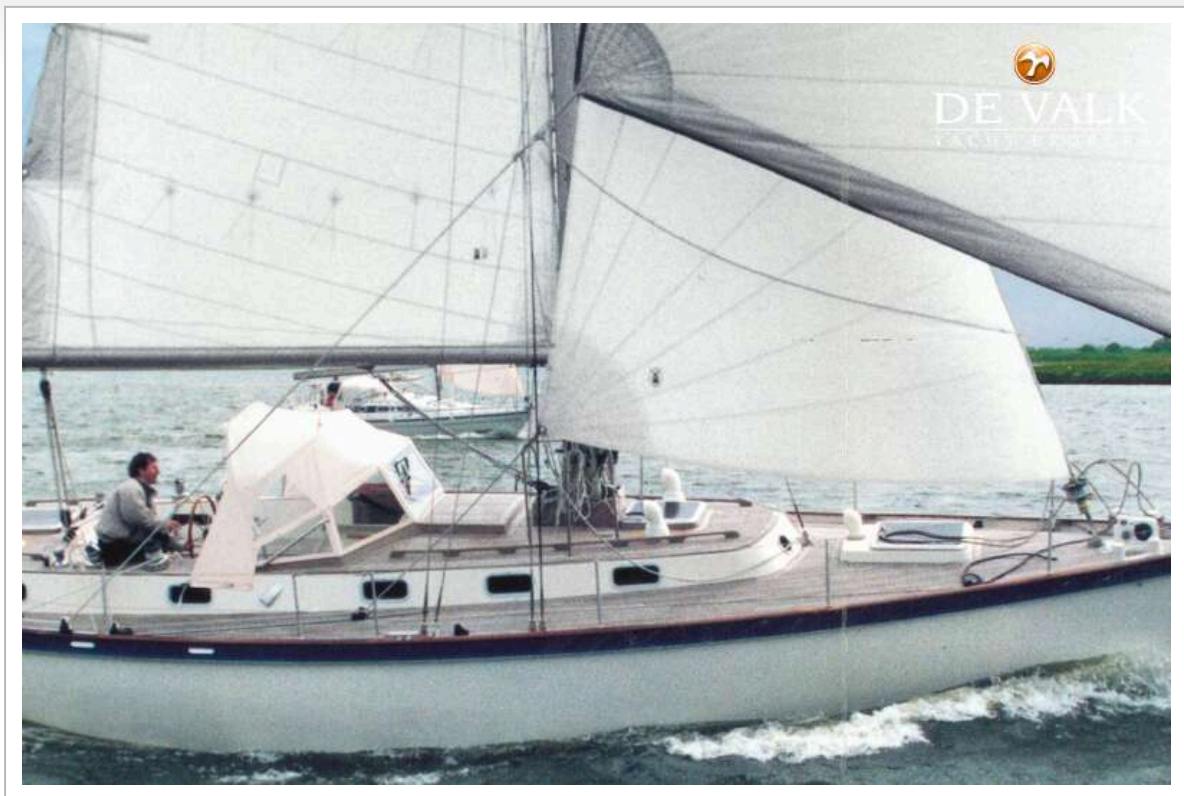
**Dieses Schiff wird versteigert,  
für weitere informationen besuchen Sie [www.devalk.nl](http://www.devalk.nl)**

[WWW.DEVALK.NL](http://WWW.DEVALK.NL)



**DE VALK**  
YACHT BROKERS

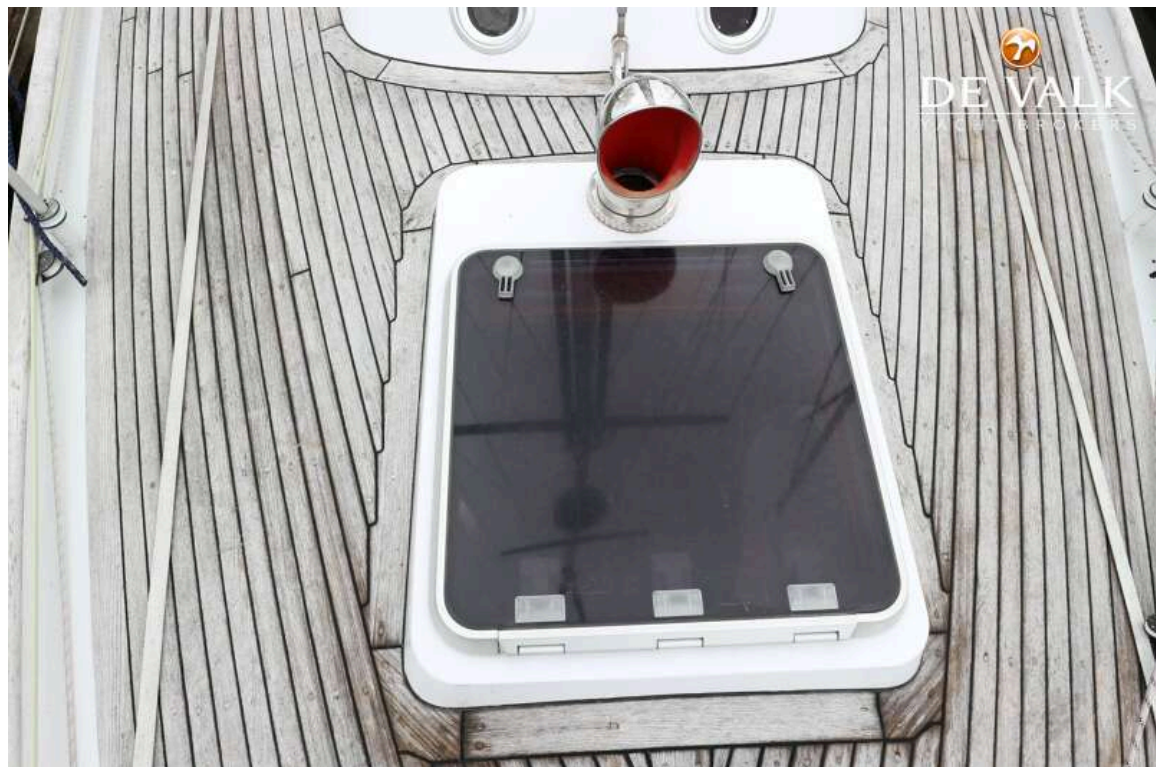




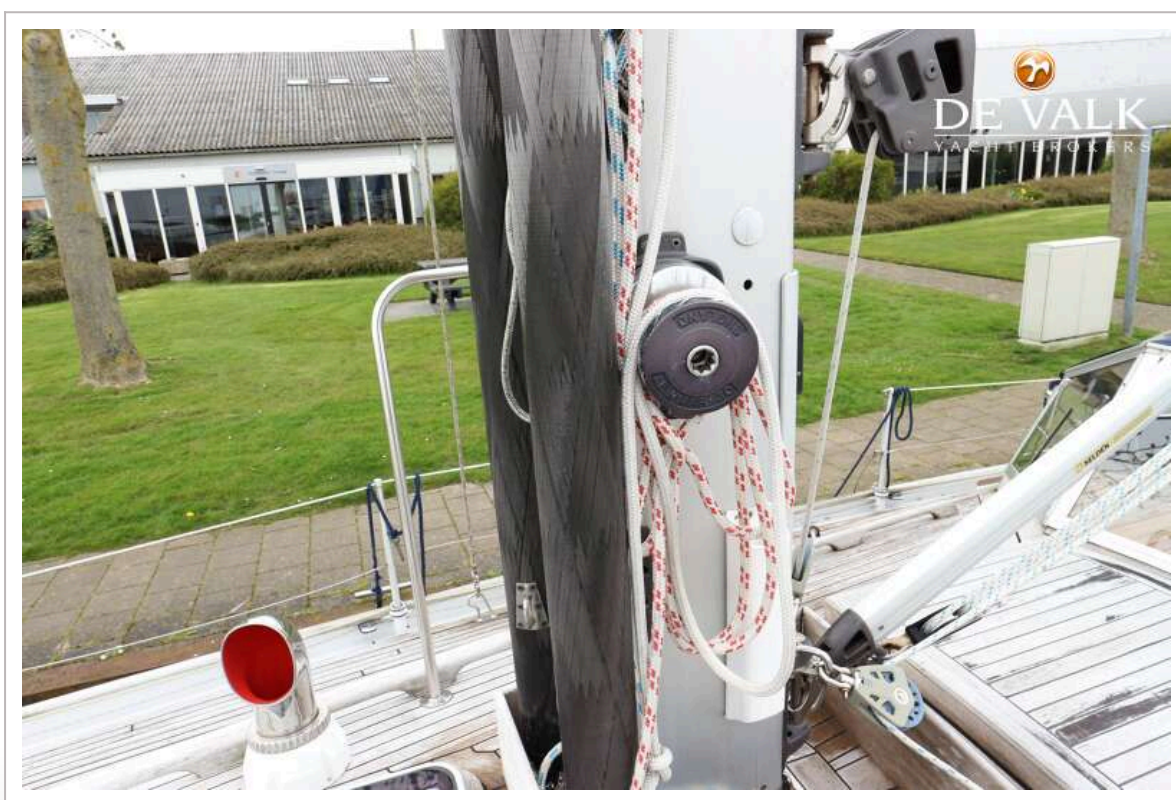
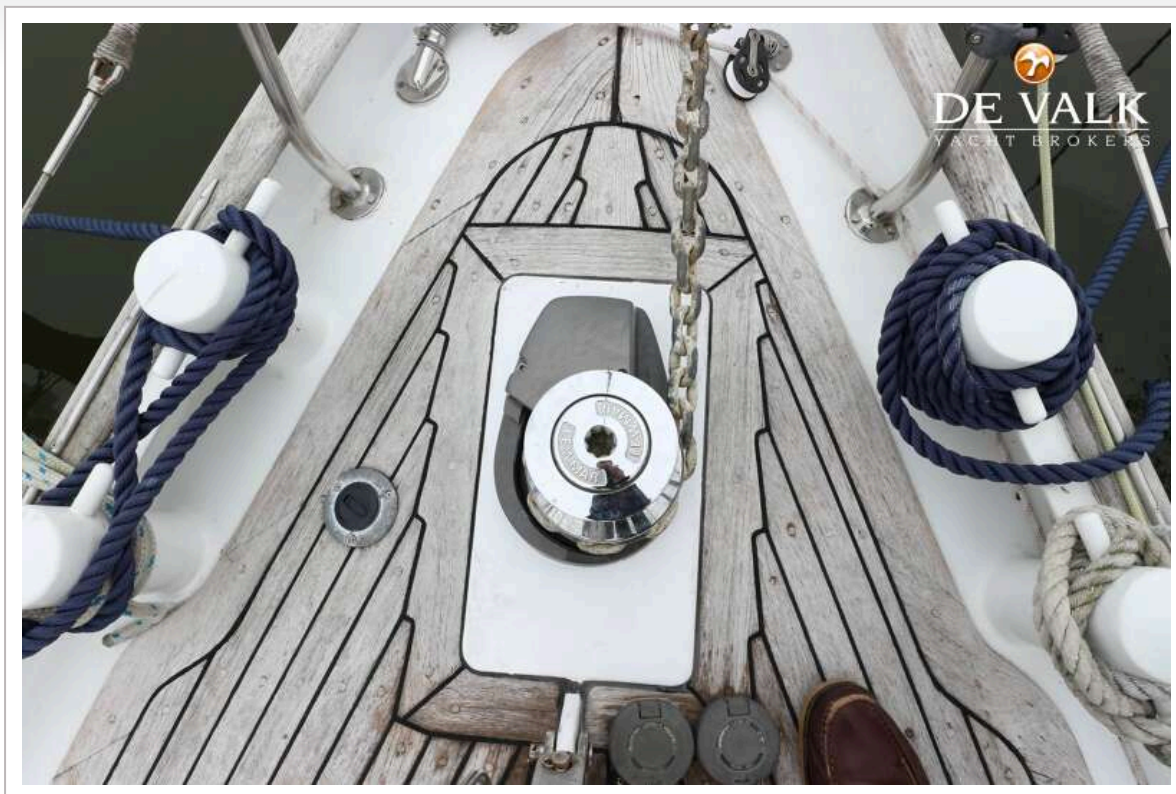


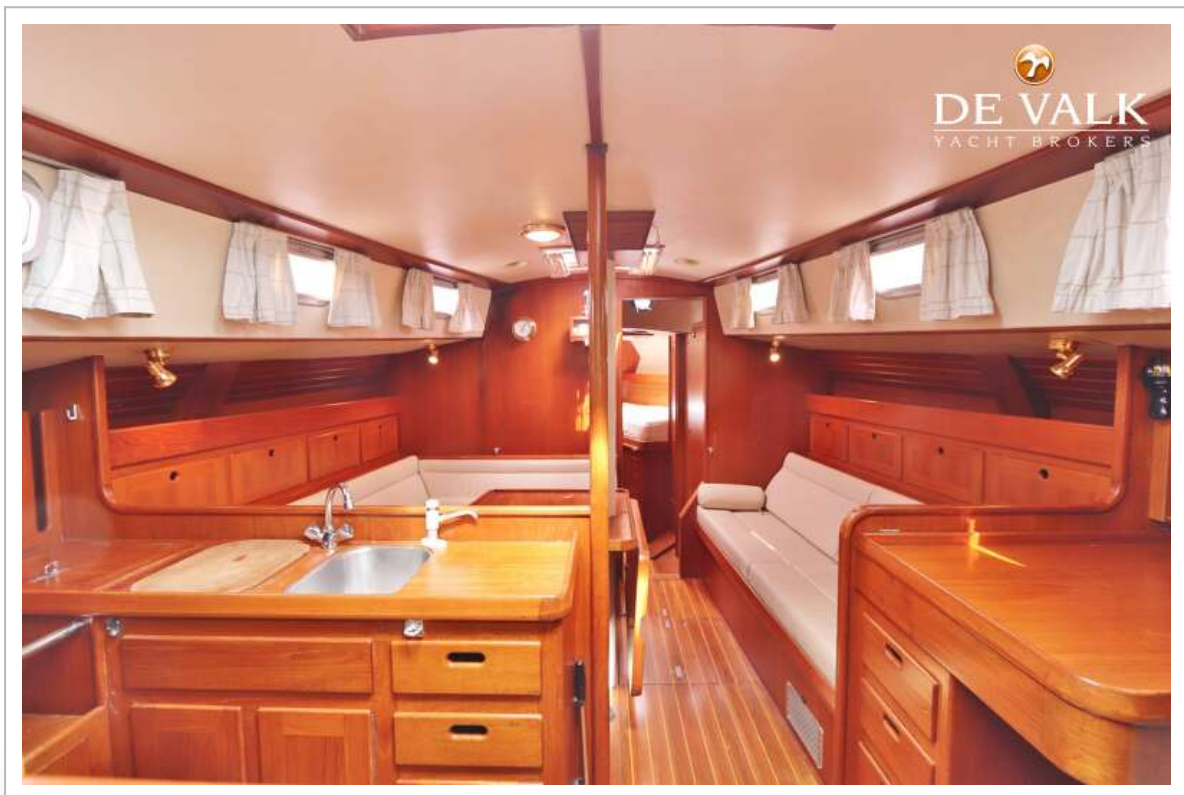
















**This yacht will be auctioned,  
for further details please visit [www.devalk.nl](http://www.devalk.nl)**

**Dit schip zal worden geveild,  
voor meer informatie gaat u naar [www.devalk.nl](http://www.devalk.nl)**

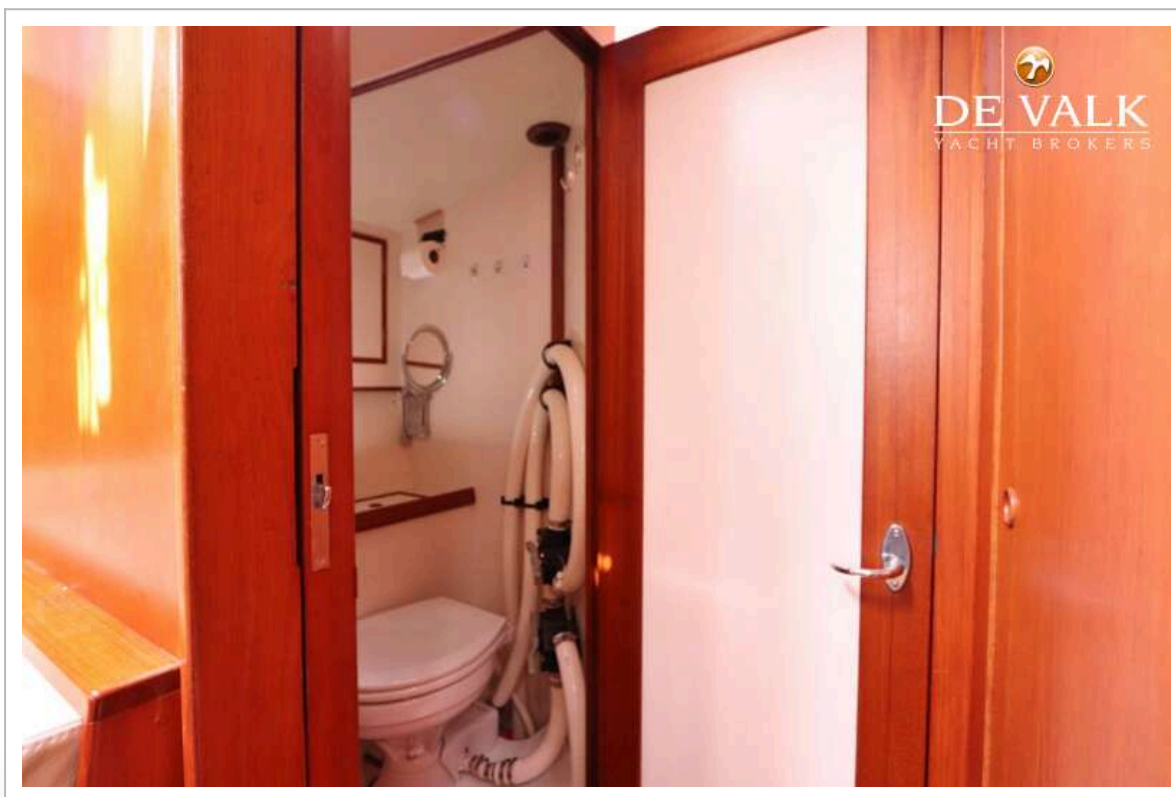
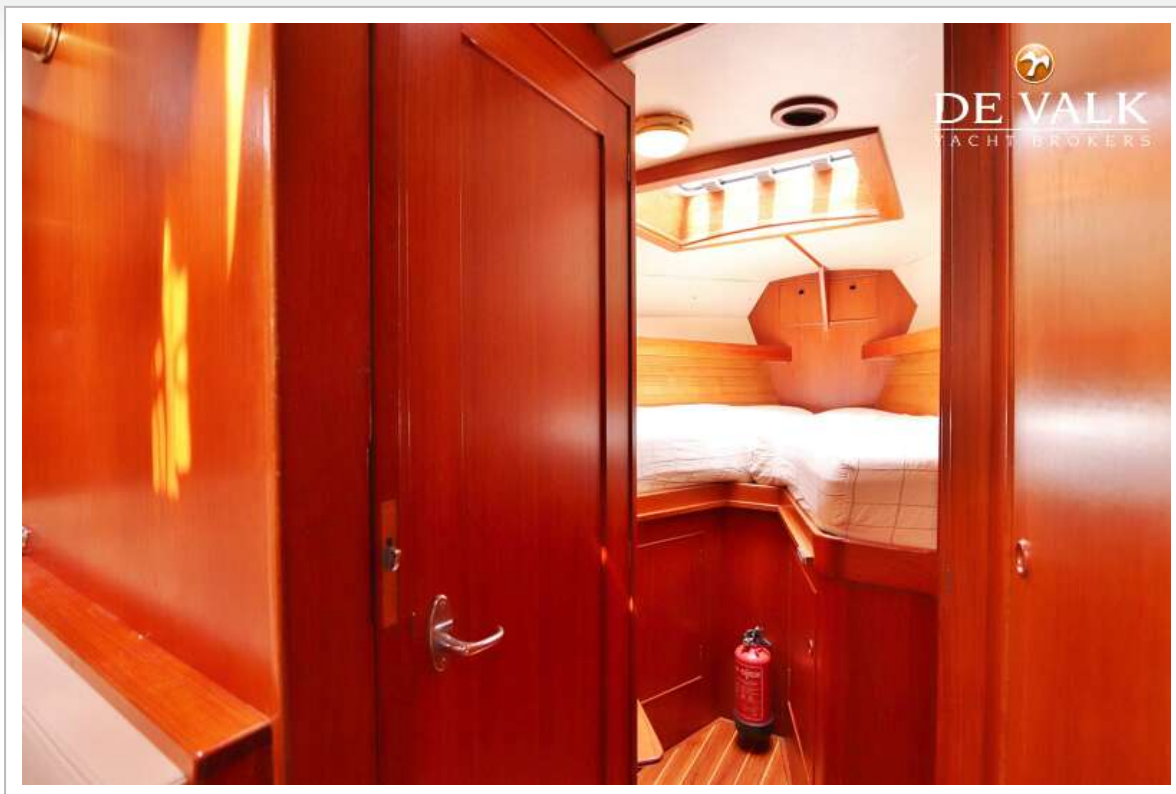
**Dieses Schiff wird versteigert,  
für weitere informationen besuchen Sie [www.devalk.nl](http://www.devalk.nl)**

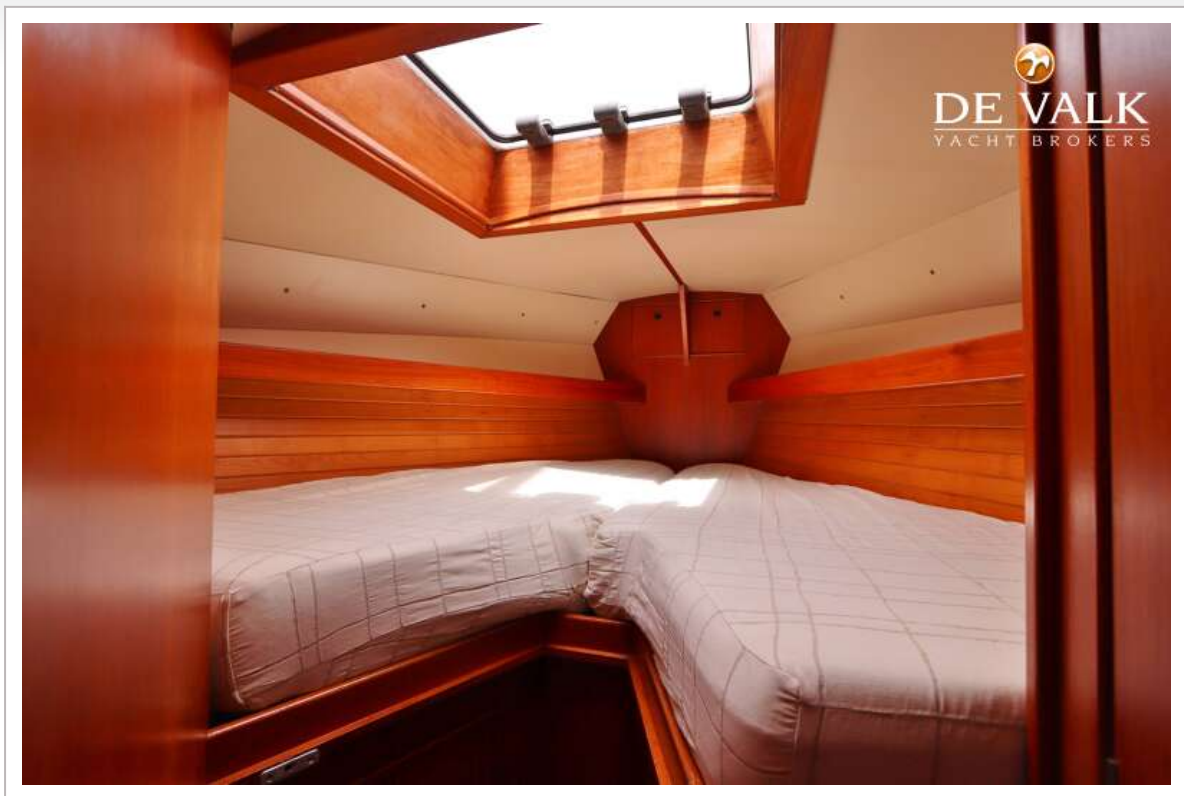
[WWW.DEVALK.NL](http://WWW.DEVALK.NL)





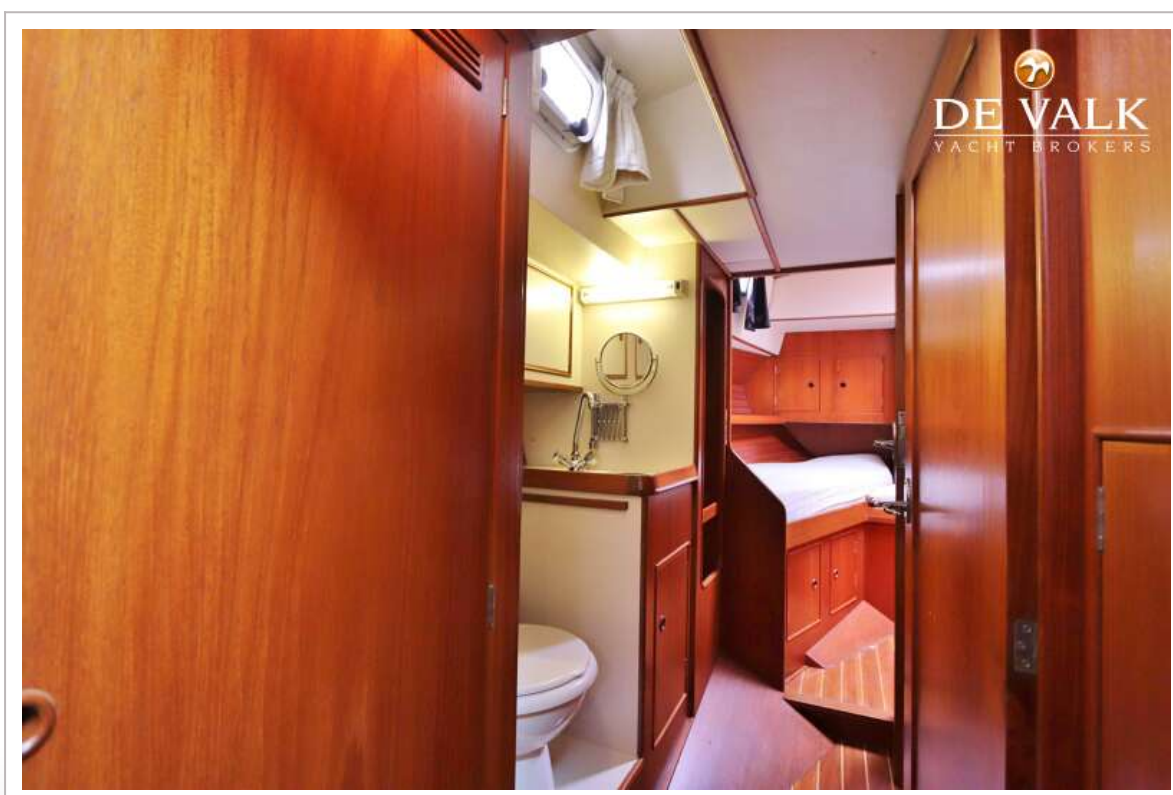
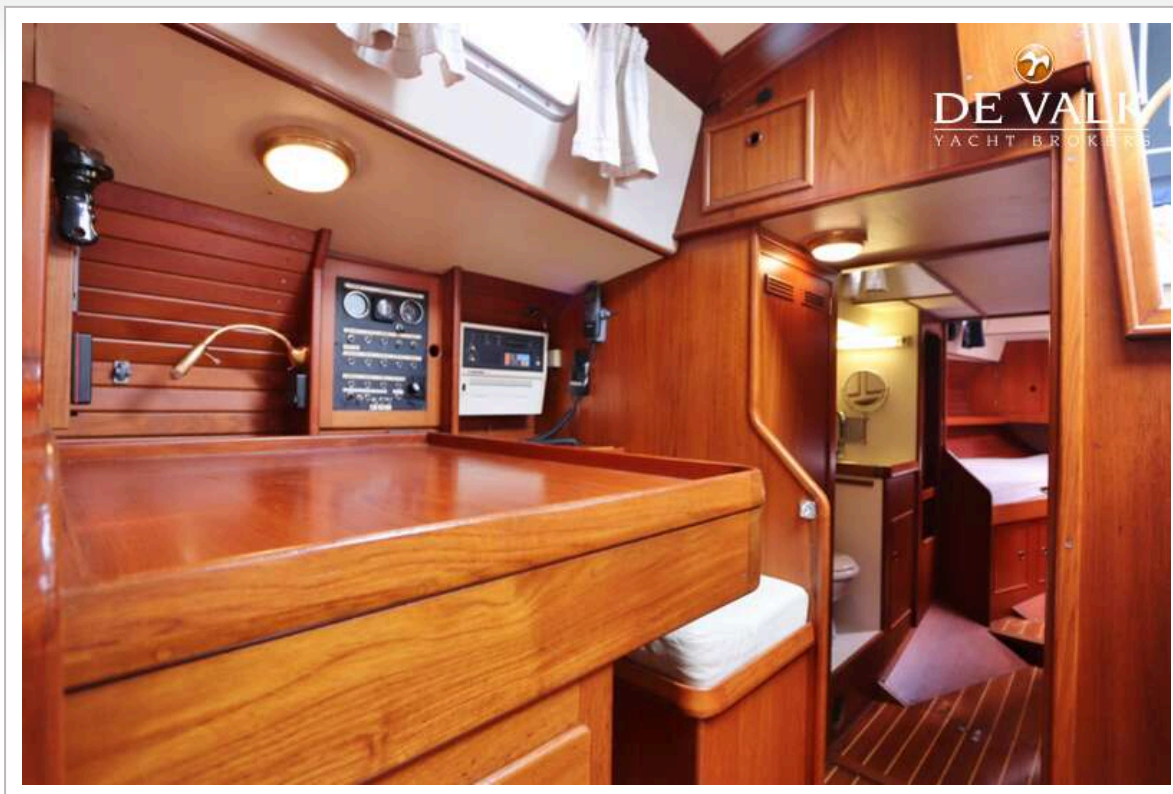










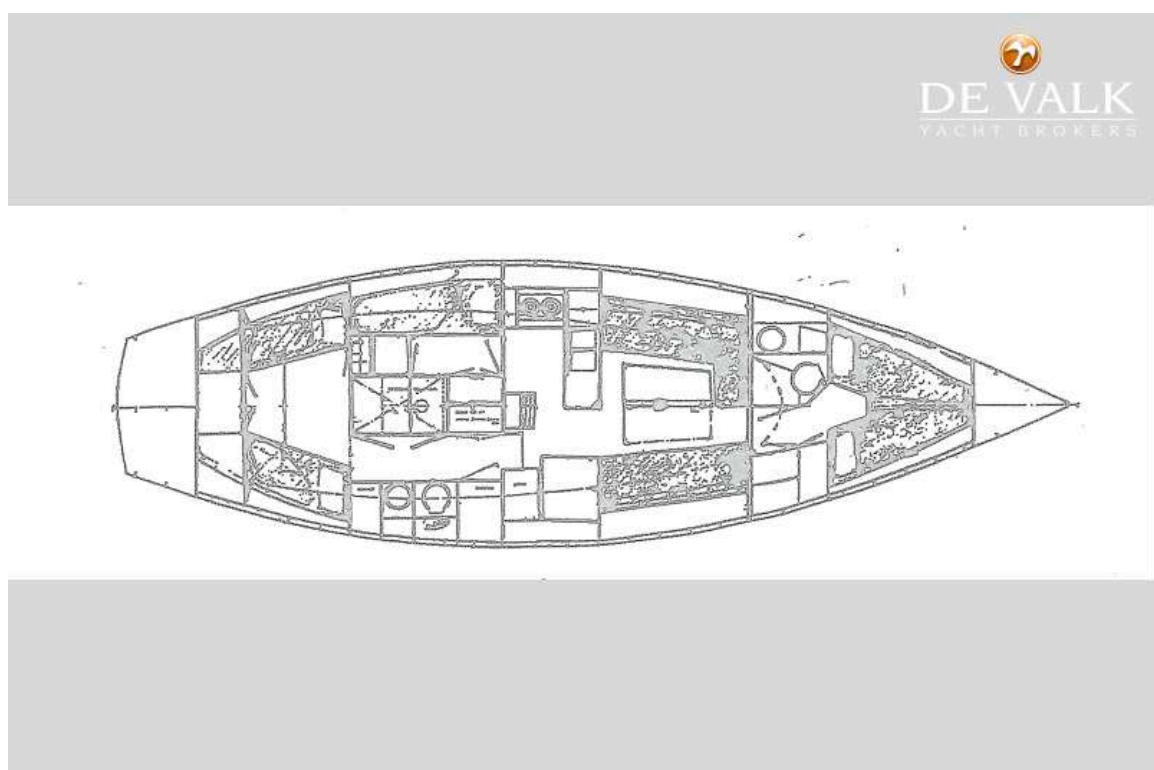
















BROKERAGE | CHARTER | BERTHS | FINANCE | INSURANCE | YACHT MANAGEMENT

**DE VALK**  
YACHT BROKERS




**This yacht will be auctioned,  
for further details please visit [www.devalk.nl](http://www.devalk.nl)**

**Dit schip zal worden geveild,  
voor meer informatie gaat u naar [www.devalk.nl](http://www.devalk.nl)**

**Dieses Schiff wird versteigert,  
für weitere informationen besuchen Sie [www.devalk.nl](http://www.devalk.nl)**

[WWW.DEVALK.NL](http://WWW.DEVALK.NL)

  
**DE VALK**  
YACHT BROKERS

