



## ISLAND PACKET 40



# ISLAND PACKET 40

## BROKER'S COMMENTS

Island Packet yachts are much appreciated by the discerning yachtsman who like to explore new horizons with a true Blue Water cruising yacht. Many have served their owners very well and this Island Packet 40 is no exception. Her current owners sailed from 2011 onwards and have found her to be very reliable and a capable partner on their journeys. She never stopped caring for the owners and vice versa and it shows. Though the excellent Island Packet build quality also helped. When you consider exploring new horizons, this IP40 should be on your shortlist for sure.

*Marc Weijenberg*

## SPECIFICATIONS

<b>Dimensions</b>	12.70 x 3.96 x 1.50 (m)	<b>Builder</b>	Island Packet - Traditional Watercraft
<b>Built</b>	1996	<b>Cabins</b>	2
<b>Material</b>	GRP	<b>Berths</b>	6
<b>Engine(s)</b>	1 x Yanmar 4JH2E diesel	<b>Hp/Kw</b>	50.00 (hp), 36.80 (kw)
<b>Asking price</b>	sold (VAT )	<b>Lying</b>	The Netherlands

## CONTACT

<b>Sales office</b>	De Valk Thuishaven	<b>Telephone</b>	+31 35 5829042
<b>Address</b>	Peperstraat 7 1411 PX Naarden NL	<b>E-mail</b>	thuishaven@devalk.nl

## DISCLAIMER

These particulars are given in good faith as supplied but cannot be guaranteed.



## GENERAL

Model	ISLAND PACKET 40
Type	sailing yacht
LOA (m)	12,70
LWL (m)	10,40
Beam (m)	3,96
Draft (m)	1,50
Air draft (m)	17,50
Headroom (m)	1,97
Year built	1996
Launched	1997
Builder	Island Packet - Traditional Watercraft
Country	U.S.A.
Designer	Robert K. Johnson
Displacement (t)	10,35
Ballast (tonnes)	lead 4,5 (internal)
Hull material	GRP
Hull colour	beige
Hull shape	S-bilged
Keel type	long keel
Superstructure material	GRP
Rubbing strake	Teak + stainless strip
Deck material	GRP
Deck finish	non-skid moulded in
Cockpit deck finish	non-skid moulded in
Antifouling (year)	Coppercoat (2018)
Dorades	4 x
Portholes	stainless steel
Fuel tank (litre)	aluminium 340
Freshwater tank (litre)	aluminium 640
Blackwater tank (litre)	aluminium 113 (not in operation)



<b>Blackwater tank extraction</b>	deck extraction
<b>Wheel steering</b>	mechanical
<b>Emergency tiller</b>	yes
<b>Extra info</b>	Cockpit seating measures an impressive 2,35 x 0,50 mtr.
<b>Extra info</b>	"Bobstay chainplate" for lower tugpoint anchor chain, mosquito porthole inserts.
<b>Extra info</b>	There is comprehensive inventory of cruising equipment, spares and all sorts of extra parts that the new owner would be happy with to have onboard when exploring new horizons.

## ACCOMMODATION

<b>Cabins</b>	2
<b>Berths</b>	6
<b>Interior</b>	teak
<b>Floor</b>	teak and holly
<b>Saloon</b>	with L-shape and straight settee and fold-up-out-of-the-way table for extra space
<b>Headroom saloon (m)</b>	1,97
<b>Heating</b>	diesel ducted hot air Webasto Airtop EVO 3900 (2012) + insulated hoses
<b>Chart table</b>	yes
<b>Aft Cabin</b>	yes
<b>Dinette to convert into berth</b>	2,00 x 1,10 mtr
<b>Galley</b>	galley headroom 1,91 mtr
<b>Countertop</b>	yes
<b>Sink</b>	stainless steel 2 x
<b>Cooker</b>	calor gas Princess 3 burner
<b>Oven</b>	calor gas Princess
<b>Gas alarm</b>	with electric gas shutt-or remote valve
<b>Fridge</b>	large toploading with shelves, drain with pump Isotherm 12v (2015)
<b>Hot water system</b>	220V + engine
<b>Water pressure system</b>	electrical



Manual and/or foot pump	both
Crockery	yes
Owners cabin	double bed
Bed length (m)	15cm extra width than standard from IP 2,00 x 1,70
Wardrobe	drawers and shelves
Bathroom	en suite I
Toilet	en suite
Toilet system	manual Jabso (large bowl, elevated seating)
Wash basin	in the bathroom
Shower	en suite
Extra info	headroom 1,95 mtr, custom set of bedlinen and Neptune mattress
Guest cabin 1	double bed
Bed length (m)	headroom 1,94 mtr 2,00 x 1,60
Wardrobe	hanging and shelves
Bathroom	II
Toilet	shared
Toilet system	manual Jabso (large bowl, elevated seating)
Wash basin	in the bathroom
Shower	(prepared/voorbereid)
Washing machine	Candy Go4W Compact (220v)
Extra info	LED interior lighting

## MACHINERY

No of engines	1
Make	Yanmar
Type	4JH2E
HP	50
kW	36.80
Fuel	diesel
Year installed	1996



# ISLAND PACKET 40

Maximum speed (kn)	8
Cruising speed (kn)	6
Consumption (l/hr)	2,5
Engine hours	3800
Engine cooling system	freshwater heat exchanger
Drive	shaft
Shaft seal	Tides Marine SureSeal
Engine controls	bowden cable
Gearbox	mechanical Kanzaki
Exhaust	watercooled
Propeller type	fixed (+spare)
Propeller blades	3
Propeller shaft material	stainless steel
Shaft lubrication	water
Manual bilge pump	yes
Electric bilge pump	2 x
Electrical installation	12v/220v
Start battery	1 x (2023)
Service battery	7 x
Battery monitor	Mastervolt display+remote
Battery charger/inverter	Mastervolt 12v/2500watt/100amp
Solar panel	4 x 100watt + MPPT controller
Shorepower	with cable
Watermaker	Dessalator D60 (60 ltr/hr, pickeled, 670 hrs)
Extra info	extra engine maintenance from 2018-2021 (incl. engine mounts)

## NAVIGATION

Compass	Ritchie
Electric compass	via autopilot
Depth sounder	Autohelm ST50



Log	Raymarine ST60
Windset	Raymarine ST60
Fish finder	Raymarine (in e7D plotter)
VHF	Raymarine 240E + cockpit connection
VHF handheld	Standard Horizon
Autopilot	Raymarine P70 + SPX course computer via autopilot
Rudder angle indicator	
Radar	Raymarine RD418HD color
GPS	Raymarine
Plotter	Raymarine e7D Hybrid Touch + Fishfinder
Navtex	Vecom K41
Electronic chart(s)	yes
AIS transponder	Raymarine AIS650 Class B
EPIRB	Kannad (exp. 01-2022)
Personal MOB transmitter	2 x Lifetag for plotter
Navigation lights	Lopo-light & led

## EQUIPMENT

Sprayhood	yes
Cockpit cover	yes
Bimini	annex cockpit cover with headroom
Cockpit cushions	yes
Cockpit table	yes
Boarding ladder	stainless steel
Gangway	yes
Deck shower	cold water
Anchor	Rocna 25kg (galvanized 2023)
Anchor chain	70 mtr (2018)
Anchor 2	Fortress 37 (+45 mtr), Fortress 32 (+40 mtr)
Anchor chain	yes
Windlass	electrical Lofrans X2 (2023) + cockpit remote



# ISLAND PACKET 40

Dinghy	inflatable Highfield 280 (2019)
Outboard	Tohatsu 10 hp (2 stroke, 2014)
Outboard support	incl. hoist-tackle for outboard and dinghy
Sea railing	wire
Grab rail (superstructure)	yes
Railing side opening gates	2 x
Pushpit	yes
Pulpit	yes
Life raft	container Plastimo
Life raft (pers)	4
Last life raft survey	valid till 12-2023
Lifejackets	cockpit eyelets 4 x automatic
Lifebuoy	yes
Danbuoy	yes
Safety lines on deck	yes
Radar reflector	Tri-lens
Fenders	yes
Mooring lines	yes
Spare parts	yes
Radio-cd player	yes
Cockpit speakers	yes
Speakers in salon	yes
Fire extinguisher	3 x (+ blanket)
Extra info	2 x Pensionado seats on pushpit

## RIGGING

Rigging	sloop-cutter
Standing rigging	wire (2012)
Brand mast	Sparcraft
Material mast	aluminium
Spreaders	1 x set





<b>Mainsail cover</b>	+ Lazy Jacks
<b>Battcars</b>	Rutgersson
<b>Fully battened mainsail</b>	North Sails
<b>Cutterstay</b>	with selftacking North Sails staysail, jib-boom and Harken furler
<b>Genoa</b>	Quantum Sails (+ UV strip)
<b>Genoa furler</b>	Harken
<b>A-symetric spi</b>	with rocon
<b>Yankee</b>	North Sails (laminare + UV strip)
<b>Reefing System</b>	quick-one-line-reefing 3 x
<b>Boomvang</b>	tackle
<b>Primary sheet winch</b>	2 x Lewmar ST48ST
<b>Halyard winches</b>	Lewmar ST40 (electric) + Lewmar ST30
<b>Reefing winch</b>	Lewmar ST30 + Lewmar 8
<b>Spi-pole</b>	aluminium (on mast)
<b>Isolated backstay</b>	yes
<b>Extra info</b>	With the electric halyard winch, setting the mainsail is effortless and safe. The self-tacking boom ensures for easy-tacking without cumbersome sheet hauling excercises. All sheats/halyards lead aft for safe handling.



# ISLAND PACKET 40



# ISLAND PACKET 40





# ISLAND PACKET 40



# ISLAND PACKET 40





# ISLAND PACKET 40

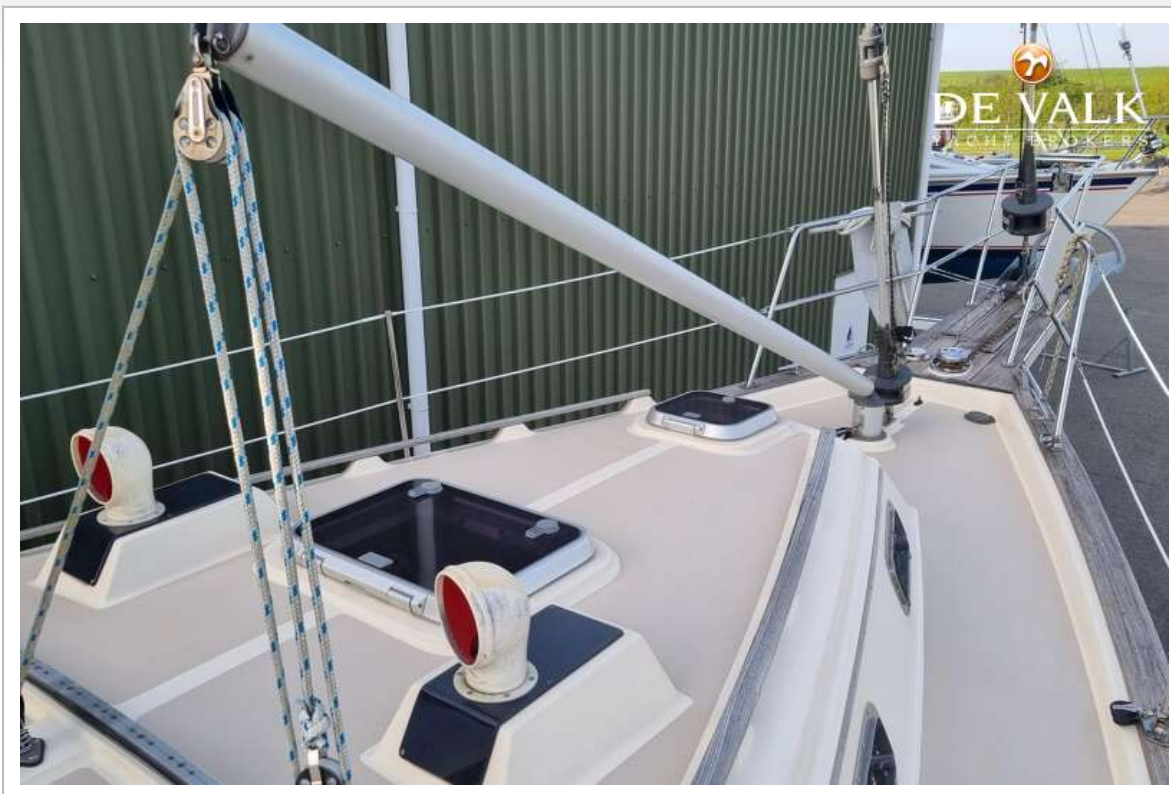


# ISLAND PACKET 40





# ISLAND PACKET 40





# ISLAND PACKET 40



# ISLAND PACKET 40

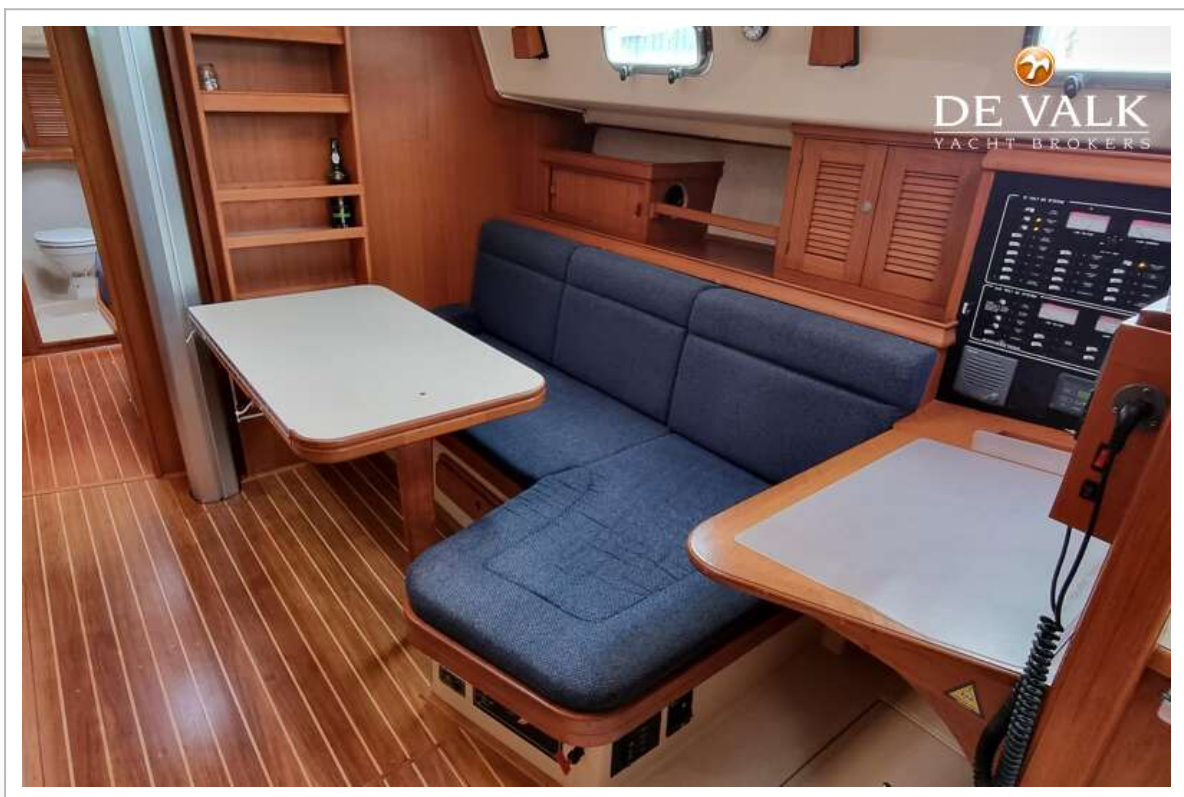




# ISLAND PACKET 40

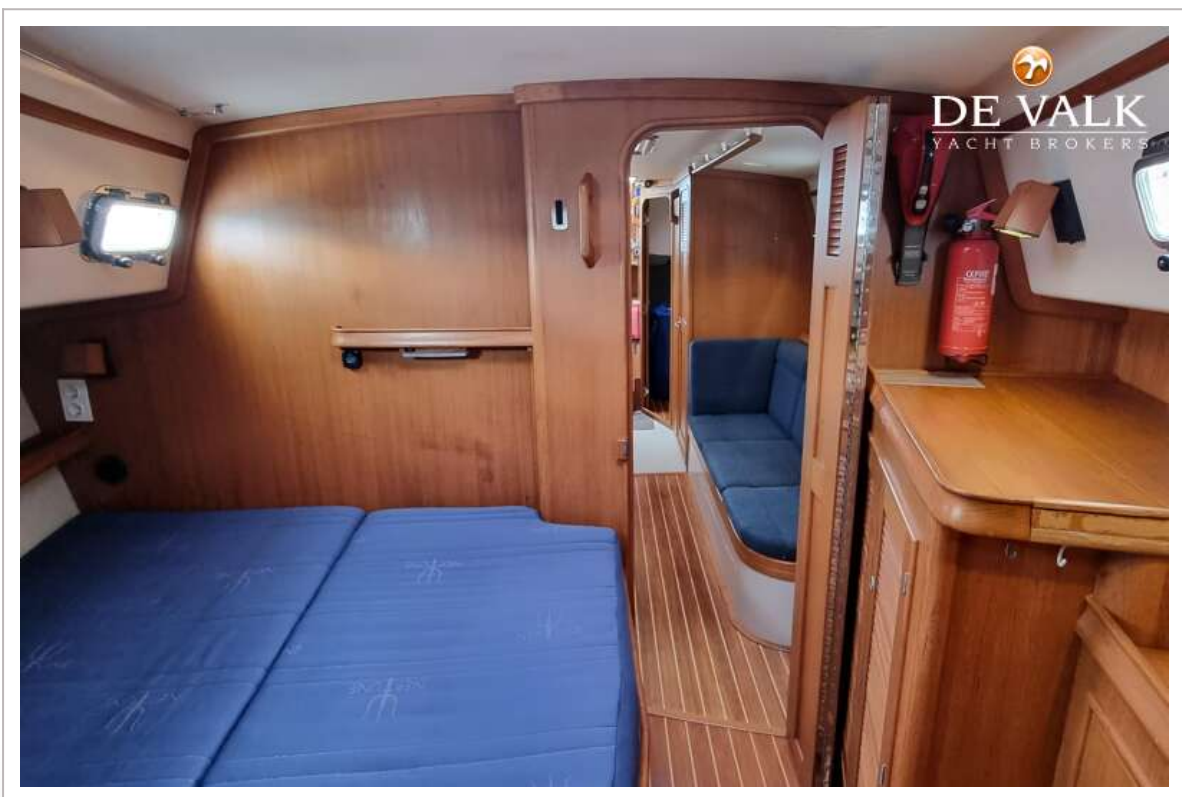


# ISLAND PACKET 40





# ISLAND PACKET 40

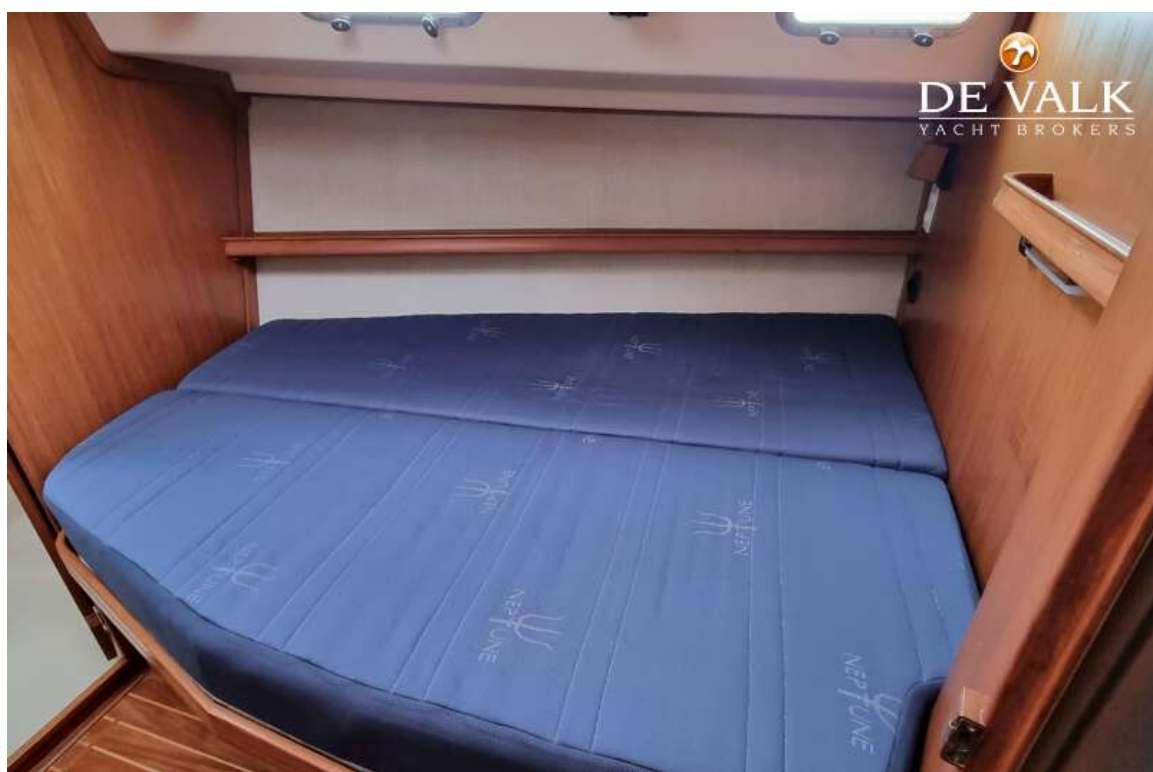


# ISLAND PACKET 40

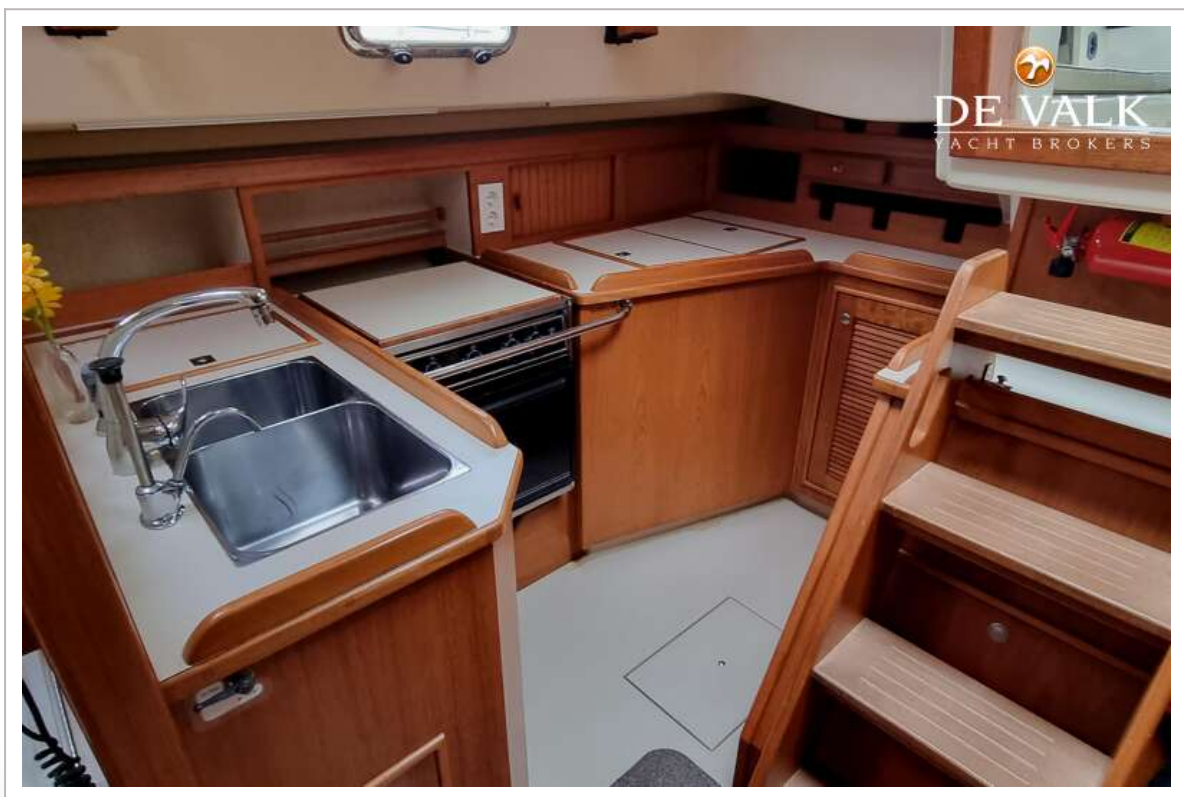




# ISLAND PACKET 40



# ISLAND PACKET 40





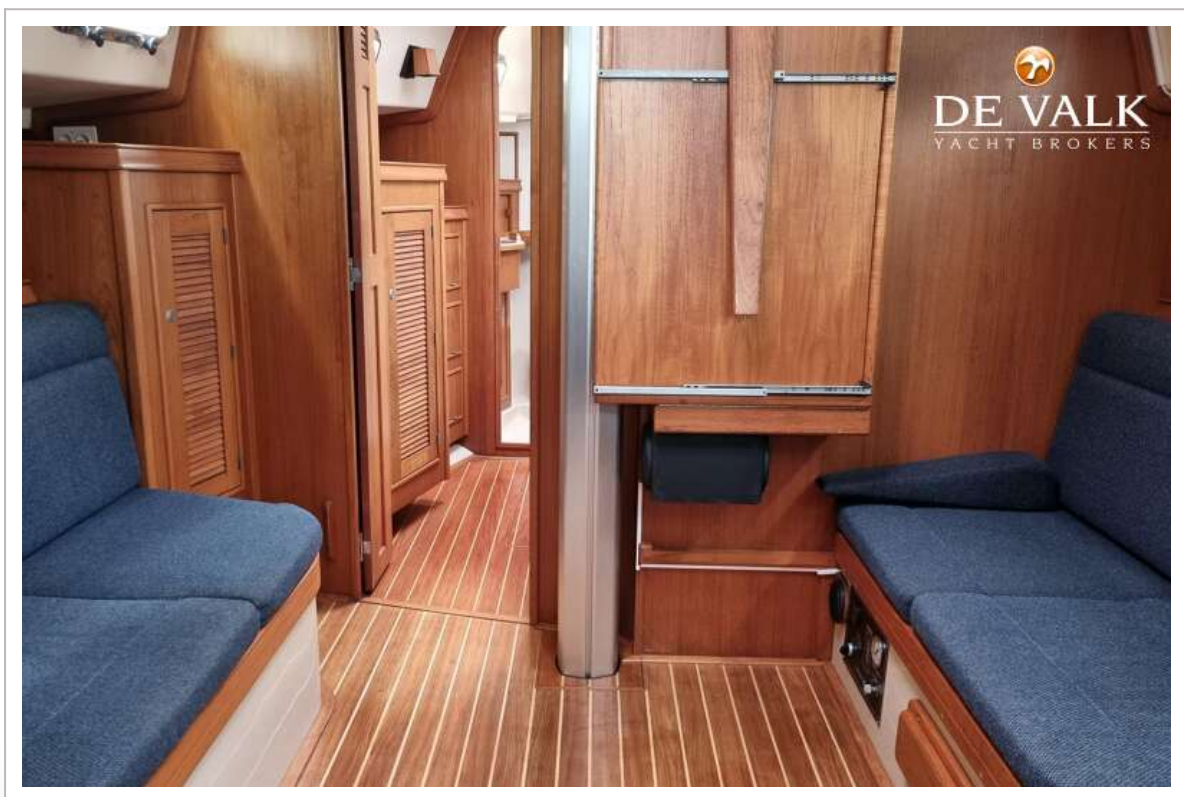
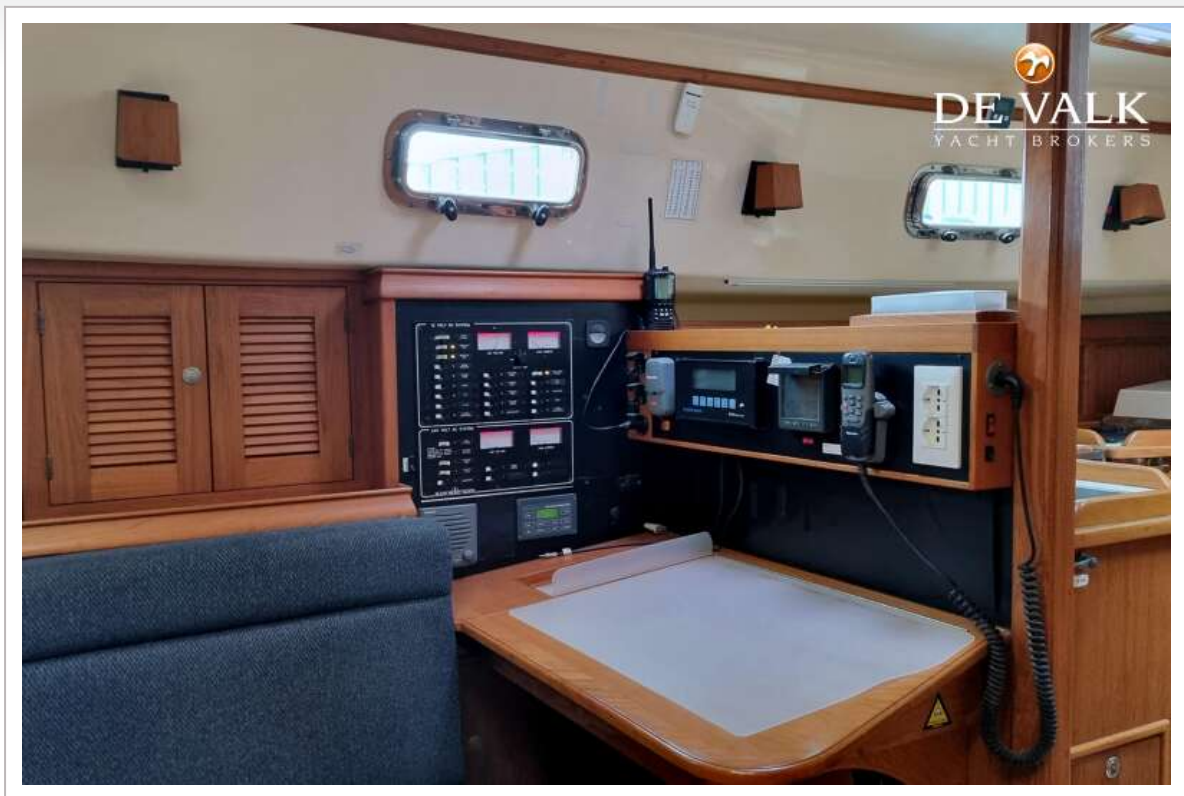
# ISLAND PACKET 40



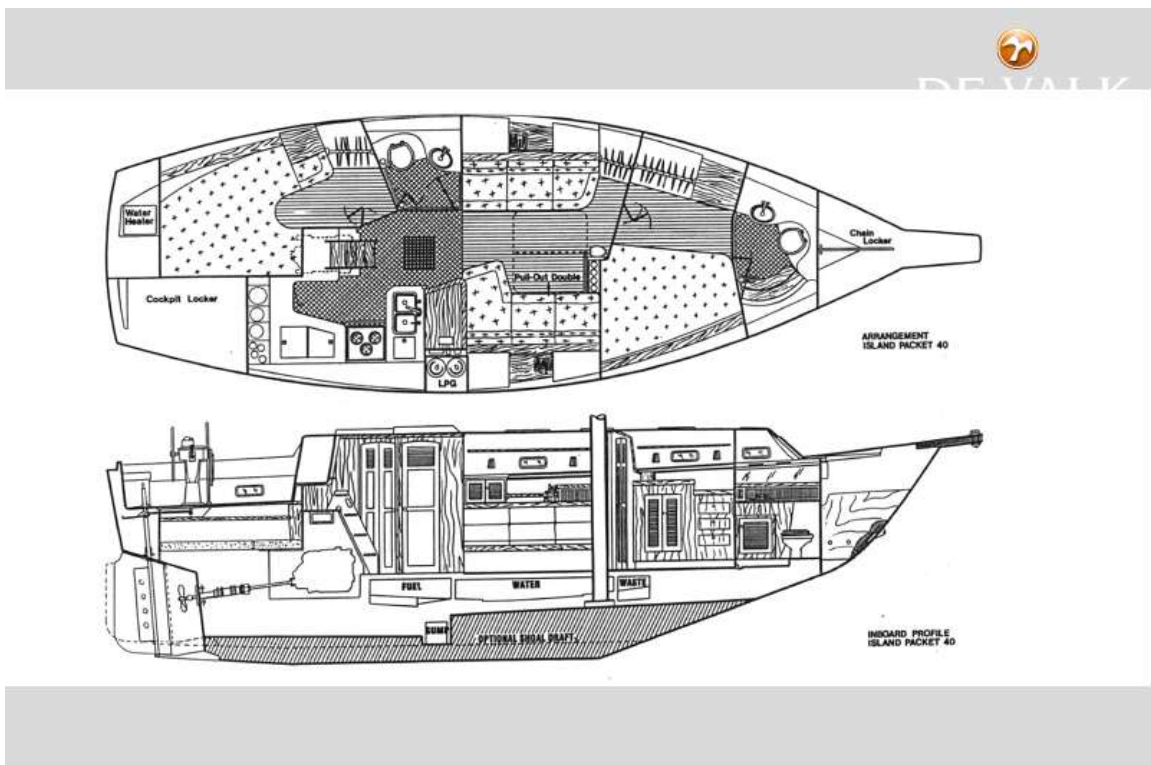
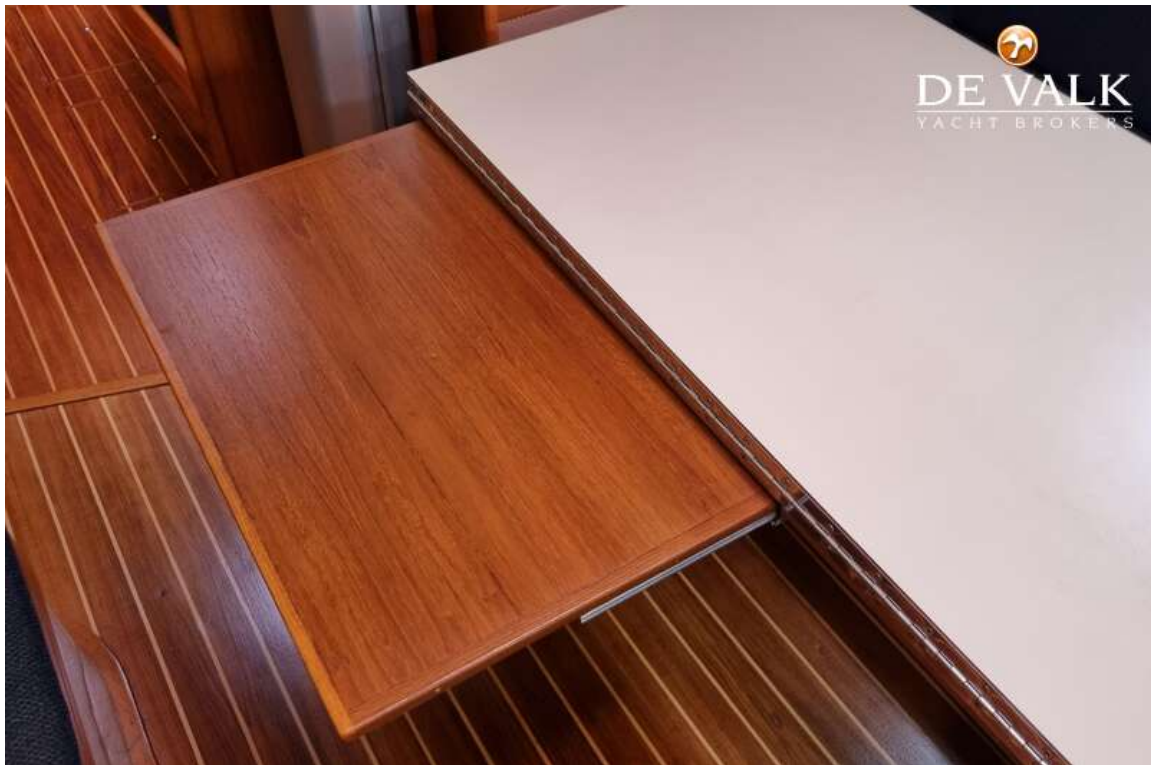




# ISLAND PACKET 40

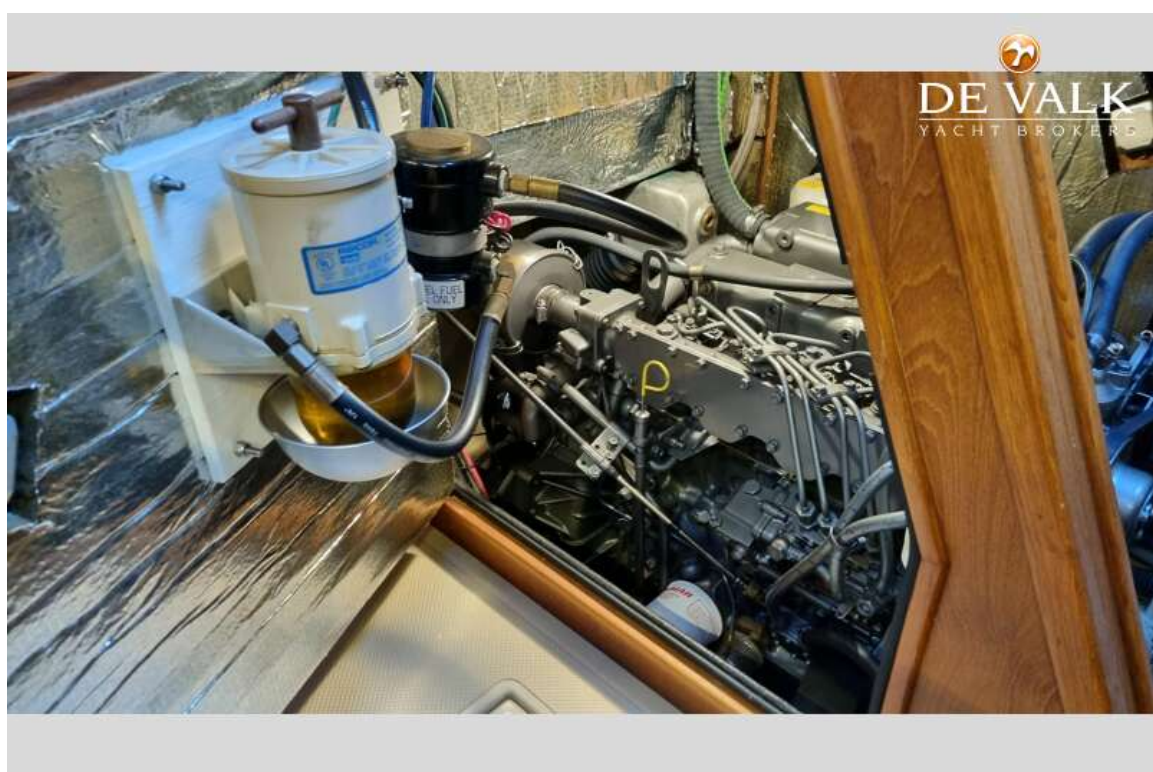
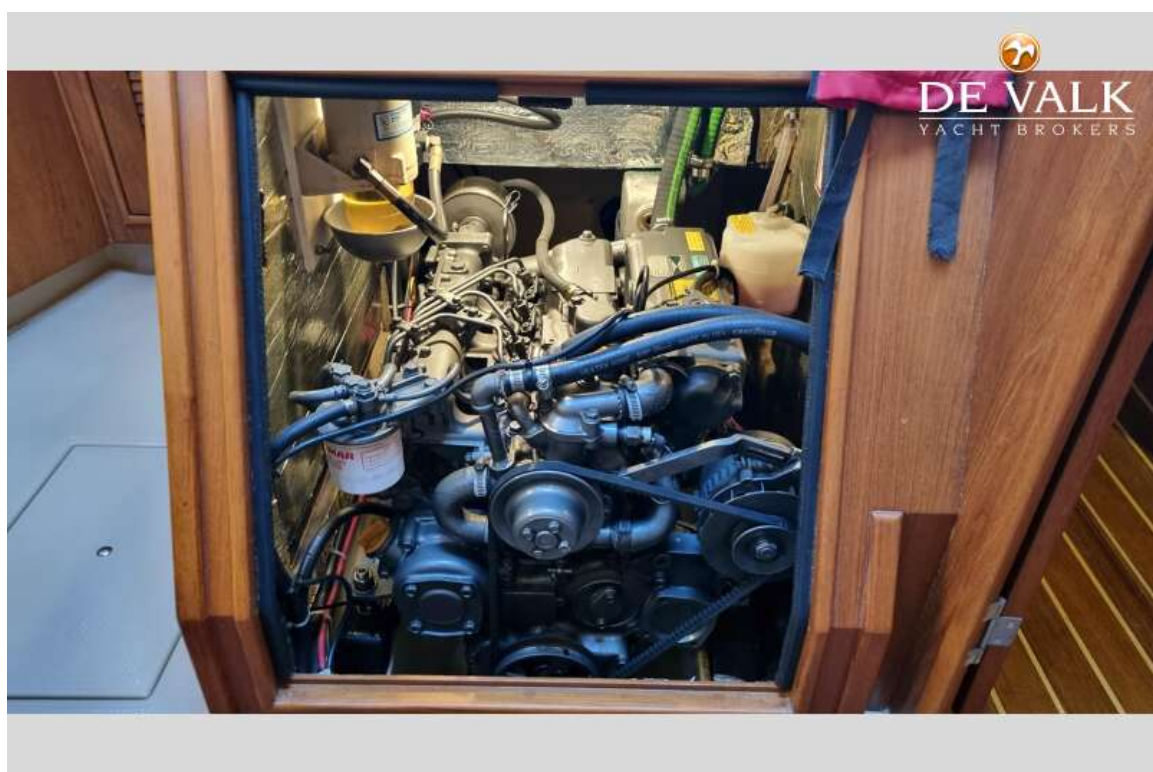


# ISLAND PACKET 40





# ISLAND PACKET 40



# ISLAND PACKET 40

