



PROUT 39 ESCALE

PROUT 39 ESCALE

BROKER'S COMMENTS

The Prout Escala 39 Brochure reads, "she has many superb new features including her high volume hull design for carrying the ever increasing payloads desired by clients living aboard." This describes the Prout Escala 39 best, 30 years on she still represents a very well designed balance between performance, safety, comfort both at sea and in port.

Hans Visser

SPECIFICATIONS

| | | | |
|---------------------|------------------------------|----------------|------------------------|
| Dimensions | 11.90 x 5.60 x 1.00 (m) | Builder | Prout Catamarans |
| Built | 1993 | Cabins | 3 |
| Material | GRP | Berths | 7 |
| Engine(s) | 1 x Vetus M455ZF1022A diesel | Hp/Kw | 52.00 (hp), 38.27 (kw) |
| Asking price | sold (VAT) | Lying | at sales office |

CONTACT

| | | | |
|---------------------|---|------------------|-----------------------|
| Sales office | De Valk Hindeloopen B.V. | Telephone | +31 514 52 40 00 |
| Address | Oosterstrand 1 8713 JS Hindeloopen NL | E-mail | hindeloopen@devalk.nl |

DISCLAIMER

These particulars are given in good faith as supplied but cannot be guaranteed.



GENERAL

| | |
|----------------------------|--------------------------|
| Model | PROUT 39 ESCALE |
| Type | catamaran sailing yacht |
| LOA (m) | 11,90 |
| LWL (m) | 10,66 |
| Beam (m) | 5,60 |
| Draft (m) | 1,00 |
| Air draft (m) | 16,15 |
| Headroom (m) | 2,00 |
| Year built | 1993 |
| Builder | Prout Catamarans |
| Country | United Kingdom |
| Designer | Francis & Roland Prout |
| Displacement (t) | 6,2 |
| Hull material | GRP |
| Hull colour | white Blue striping |
| Hull shape | round-bilged |
| Superstructure material | GRP |
| Rubbing strake | aluminum |
| Deck material | GRP |
| Deck finish | non-skid moulded in |
| Superstructure deck finish | non-skid moulded in |
| Window frame | aluminium |
| Deckhatch | 10x |
| Radar arch | yes |
| Fuel tank (litre) | stainless steel 120 ltr. |
| Freshwater tank (litre) | 600 ltr. |
| Blackwater tank (litre) | 60 ltr. |
| Blackwater tank extraction | deck extraction + pump |
| Wheel steering | hydraulic |
| Outside helm position | yes |



| | |
|------------------|---|
| Emergency tiller | yes |
| Extra info | Keel has stainless steel shoes for standing |

ACCOMMODATION

| | |
|-------------------------|----------------------------|
| Cabins | 3 |
| Berths | 7 |
| Interior | cherry |
| Layout | Owner |
| Floor | carpet |
| Open cockpit | yes |
| Aft deck | yes |
| Deck saloon | yes |
| Saloon | yes |
| Headroom saloon (m) | 2,00 |
| Chart table | yes |
| Aft Cabin | 2 x |
| Dinette | yes |
| Opening door to cockpit | yes |
| Galley | Starboard hull |
| Countertop | Duropol |
| Sink | Double |
| Cooker | calor gas 3 burner |
| Oven | Eno |
| Gas alarm | Electronic gas detector |
| Fridge | Waeco |
| Hot water system | 220V + engine Boiler 40 L. |
| Water pressure system | electrical New pump 2019 |
| Owners cabin | double bed |
| Bed length (m) | 2,05 x 1,40 mtr. |
| Wardrobe | hanging and shelves |
| Bathroom | shared |



PROUT 39 ESCALE

| | |
|----------------|---------------------|
| Toilet | shared |
| Toilet system | manual Jabsco |
| Wash basin | at the toilet |
| Shower | shared |
| Guest cabin 1 | double bed |
| Bed length (m) | 2,05 x 1,40 mtr. |
| Wardrobe | hanging and shelves |
| Toilet | yes |
| Guest cabin 2 | Small double bed |
| Bed length (m) | 2,00 x 1,00 mtr. |
| Wardrobe | hanging and shelves |

MACHINERY

| | |
|-----------------------|---------------------------|
| No of engines | 1 |
| Make | Vetus |
| Type | M455ZF1022A |
| HP | 52 |
| kW | 38.27 |
| Fuel | diesel |
| Year installed | 2012 |
| Maximum speed (kn) | 7 |
| Cruising speed (kn) | 5 |
| Consumption (l/hr) | 2 |
| Engine hours | 1024 |
| Engine cooling system | freshwater heat exchanger |
| Engine controls | bowden cable |
| Gearbox | mechanical |
| Exhaust | watercooled |
| Propeller type | fixed |
| Propeller blades | 3 |
| Manual bilge pump | yes |



PROUT 39 ESCALE

| | |
|--------------------------|-------------------------------|
| Electric bilge pump | yes |
| Bilge alarm | yes |
| Electrical installation | 12 V DC and 220 V AC |
| Batteries | Total 4x AMG 110Ah new 2021 |
| Start battery | yes |
| Service battery | yes |
| Battery charger/inverter | Victron 1600W 220V 12V 25A |
| Solar panel | 2 x |
| Shorepower | with cable |
| Extra info | Sonic Sillette drive |

NAVIGATION

| | |
|-----------------------------|------------------------------------|
| Compass | yes |
| Electric compass | Raymarine |
| Depth sounder | Raymarine I50 new 2015 |
| Forw. looking depth sounder | yes |
| Log | Raymarine I50 new 2015 |
| Windset | Raymarine I50 new 2015 |
| VHF | Raymarine DSC/Atis/AIS new 2015 |
| VHF handheld | yes |
| Autopilot | Raymarine |
| Radar | Raymarine RD418HD color new 2015 |
| Radar/GPS/plotter | Raymarine E25 Hybrid Touch 2015 |
| AIS transceiver | Raymarine new 2015 |
| Navigation lights | yes |

EQUIPMENT

| | |
|------------------|-----|
| Sprayhood | yes |
| Cockpit cover | yes |
| Cockpit table | yes |
| Bathing platform | yes |



PROUT 39 ESCALE

| | |
|----------------------------|-------------------------------|
| Boarding ladder | stainless steel |
| Anchor | CQR Plough |
| Anchor chain | Stainless steel 8mm / 40 mtr. |
| Anchor 2 | Danforth 2x |
| Windlass | electrical Lofrans 1500W |
| Capstan | yes |
| Outboard support | yes |
| Davits | stainless steel |
| Davits controls | manual |
| Sea railing | yes |
| Grab rail (superstructure) | stainless steel |
| Pushpit | yes |
| Pulpit | yes |
| Fenders | yes |
| Mooring lines | yes |
| Radio-cd player | yes |

RIGGING

| | |
|-------------------------|--------------------------------------|
| Rigging | sloop |
| Standing rigging | wire |
| Material mast | aluminium |
| Spreaders | 1 pair |
| Mainsail | Topline 23.5 m² |
| Mainsail cover | yes |
| Fully battened mainsail | yes |
| Genoa | 2x |
| Genoa furler | yes |
| Genoa cover | Furlex S300 |
| Gennaker | Bergeschlauch runner 90 m² |
| Reefing System | quick-one-line-reefing |
| Primary sheet winch | Harken electric 2 speed self tailing |



PROUT 39 ESCALE

Genoa sheetwinches

1 x 2 speed self tailing

Halyard winches

1 x Andersen ST

Spi-pole

carbon On deck



PROUT 39 ESCALE



PROUT 39 ESCALE



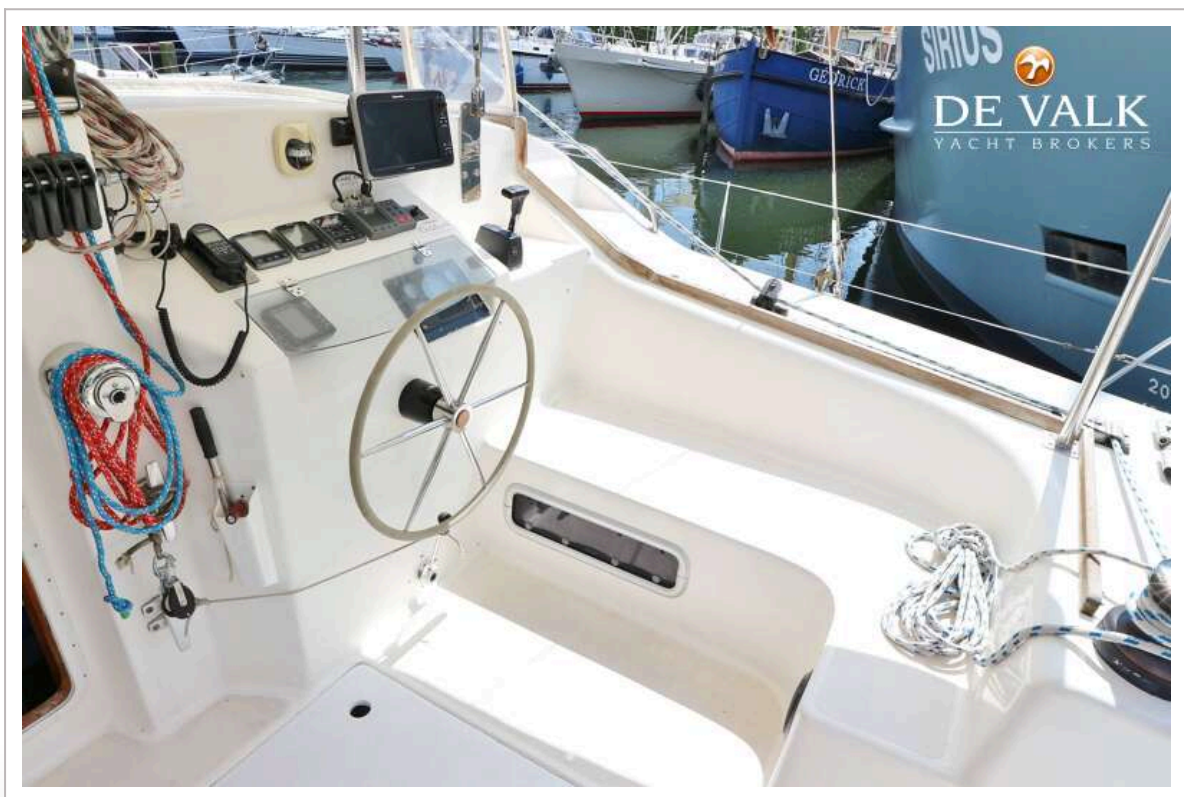
PROUT 39 ESCALE



PROUT 39 ESCALE



PROUT 39 ESCALE



PROUT 39 ESCALE



PROUT 39 ESCALE



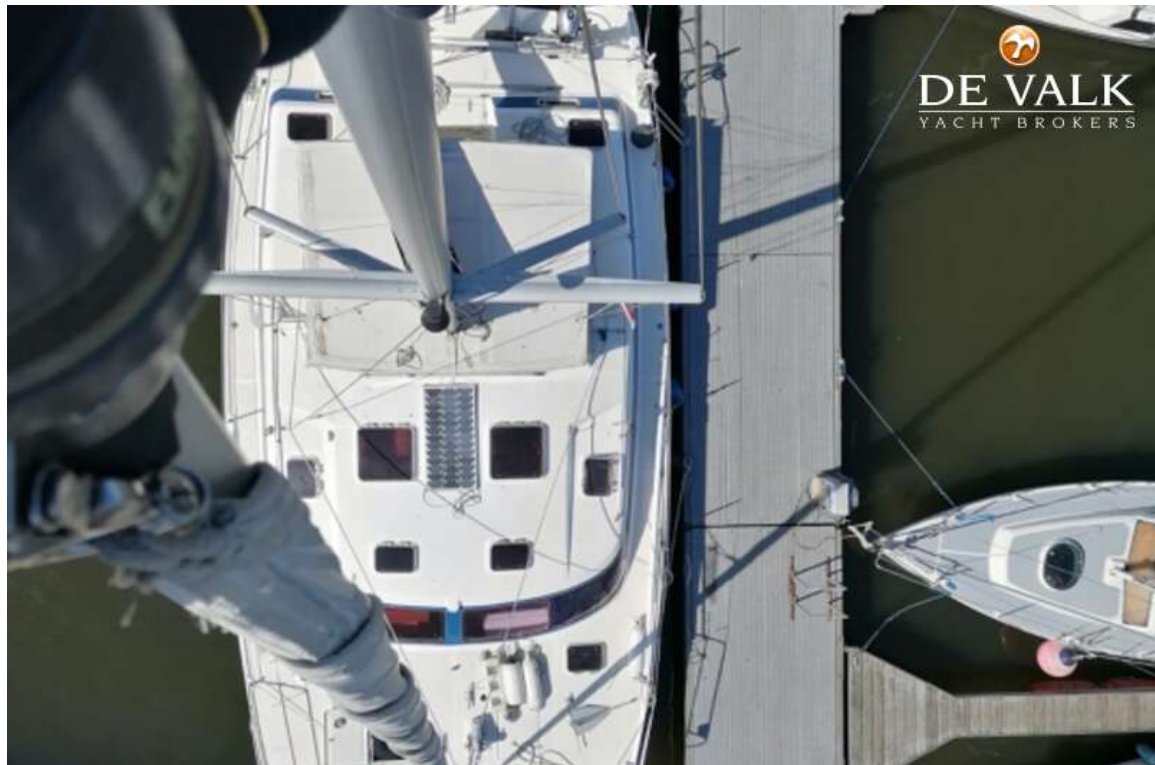
PROUT 39 ESCALE



PROUT 39 ESCALE



PROUT 39 ESCALE



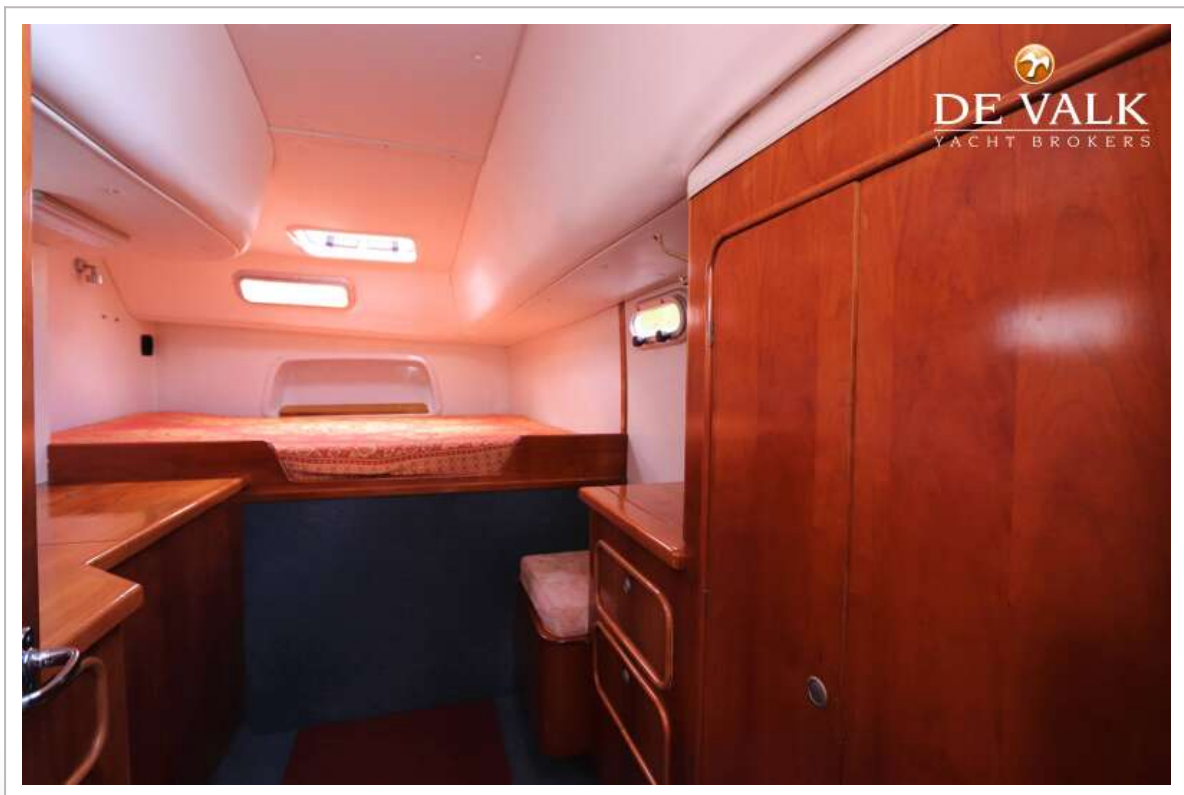
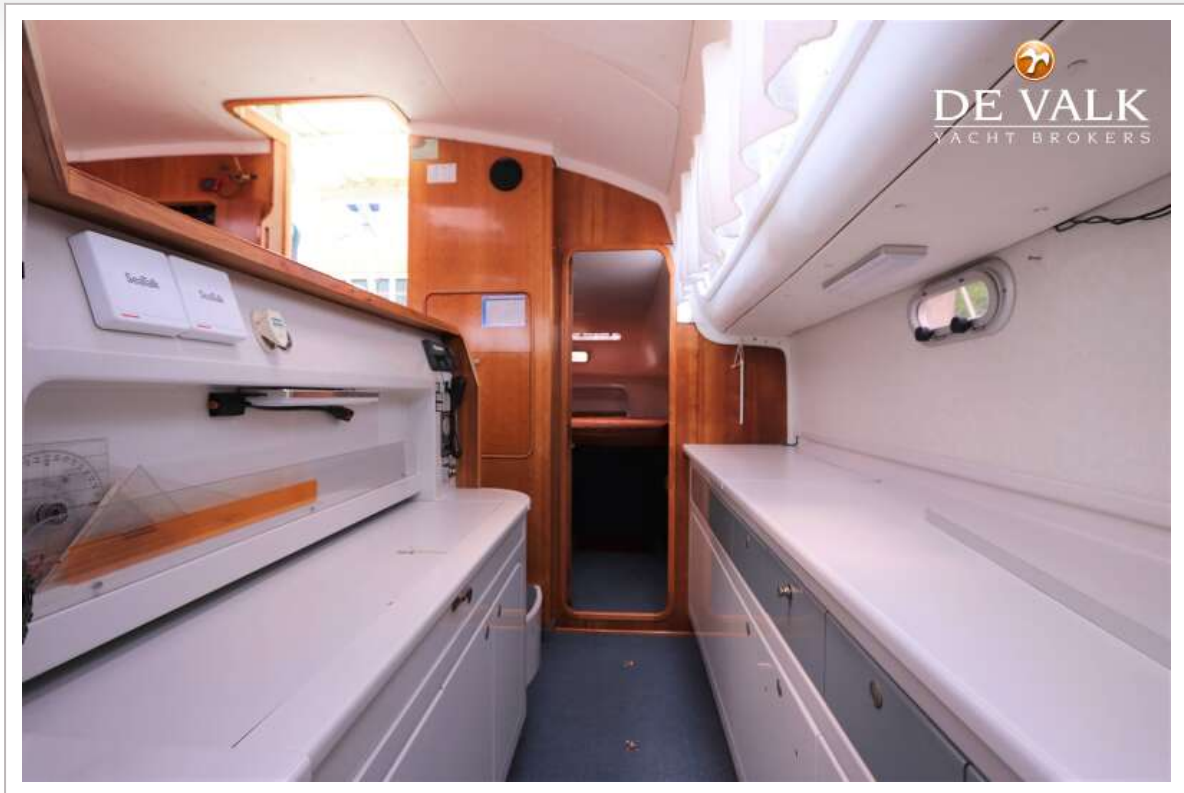
PROUT 39 ESCALE



PROUT 39 ESCALE



PROUT 39 ESCALE



PROUT 39 ESCALE



PROUT 39 ESCALE



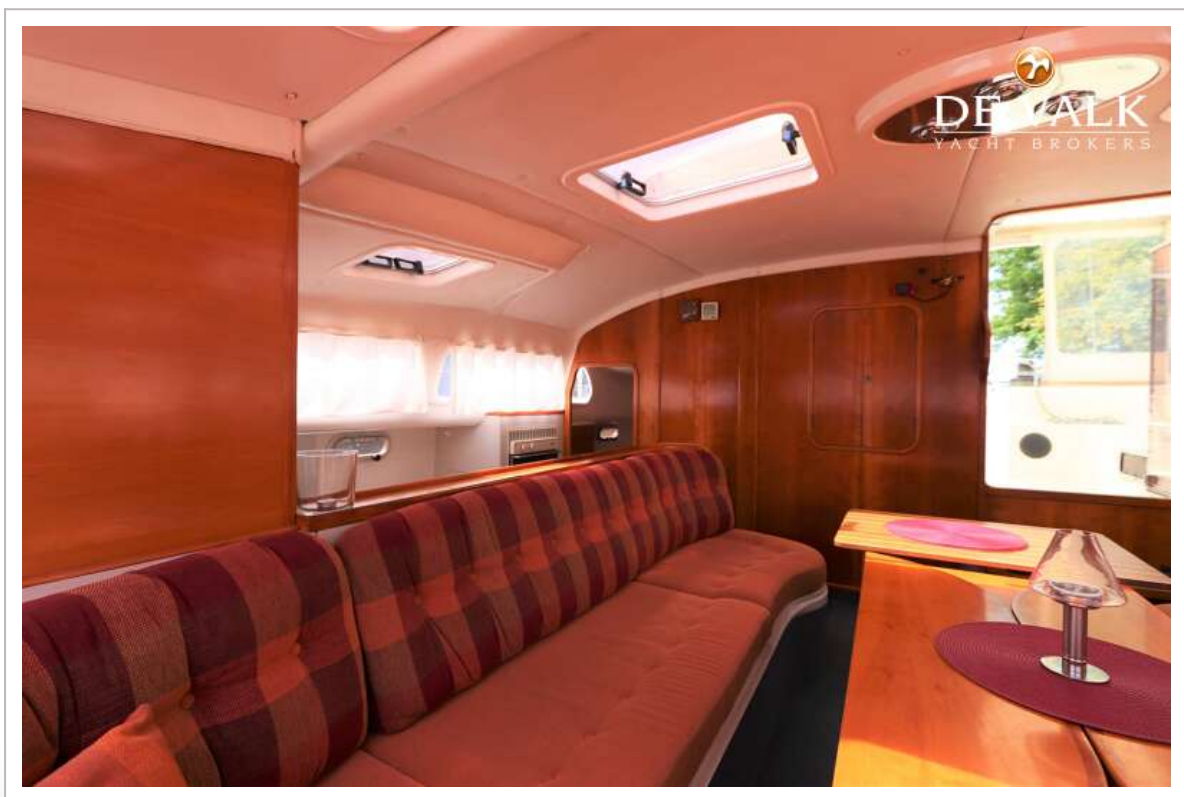
PROUT 39 ESCALE



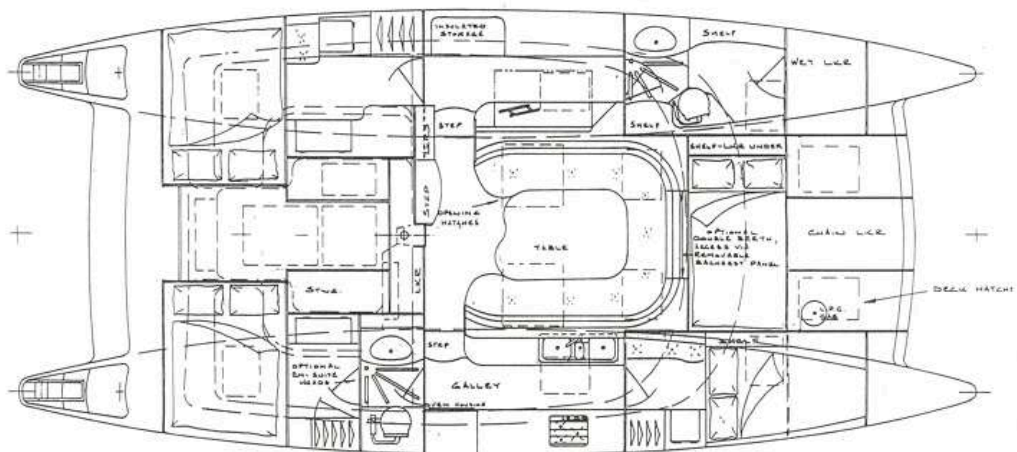
PROUT 39 ESCALE



PROUT 39 ESCALE



PROUT 39 ESCALE

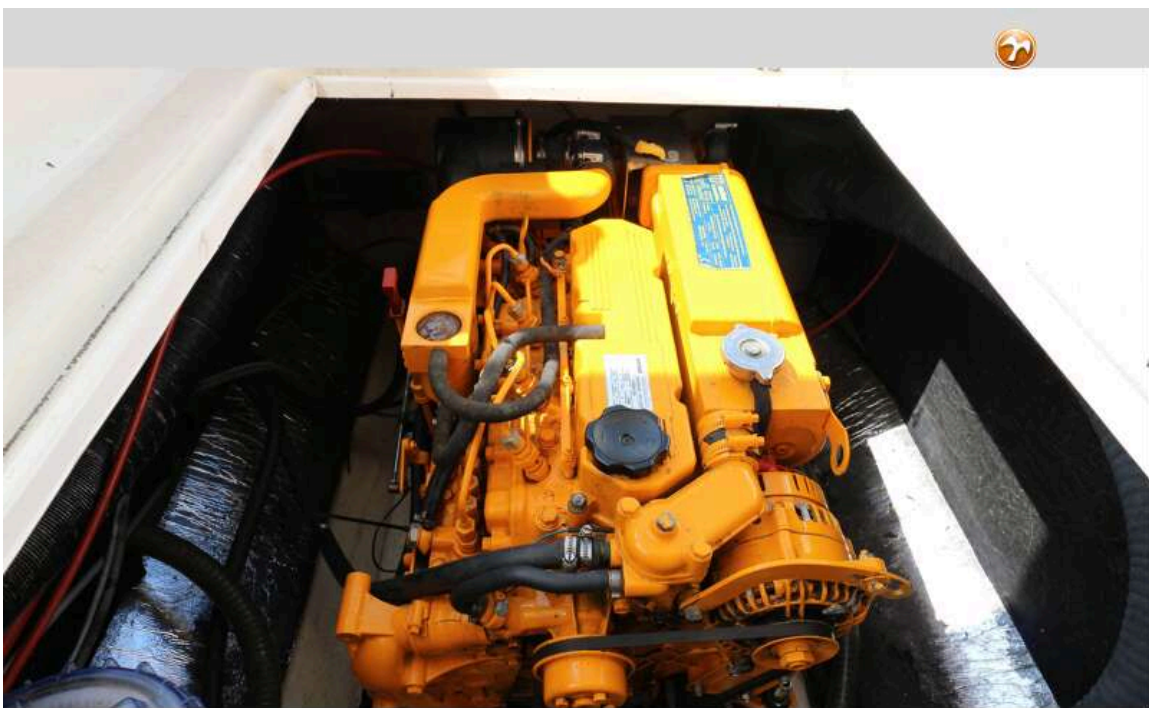
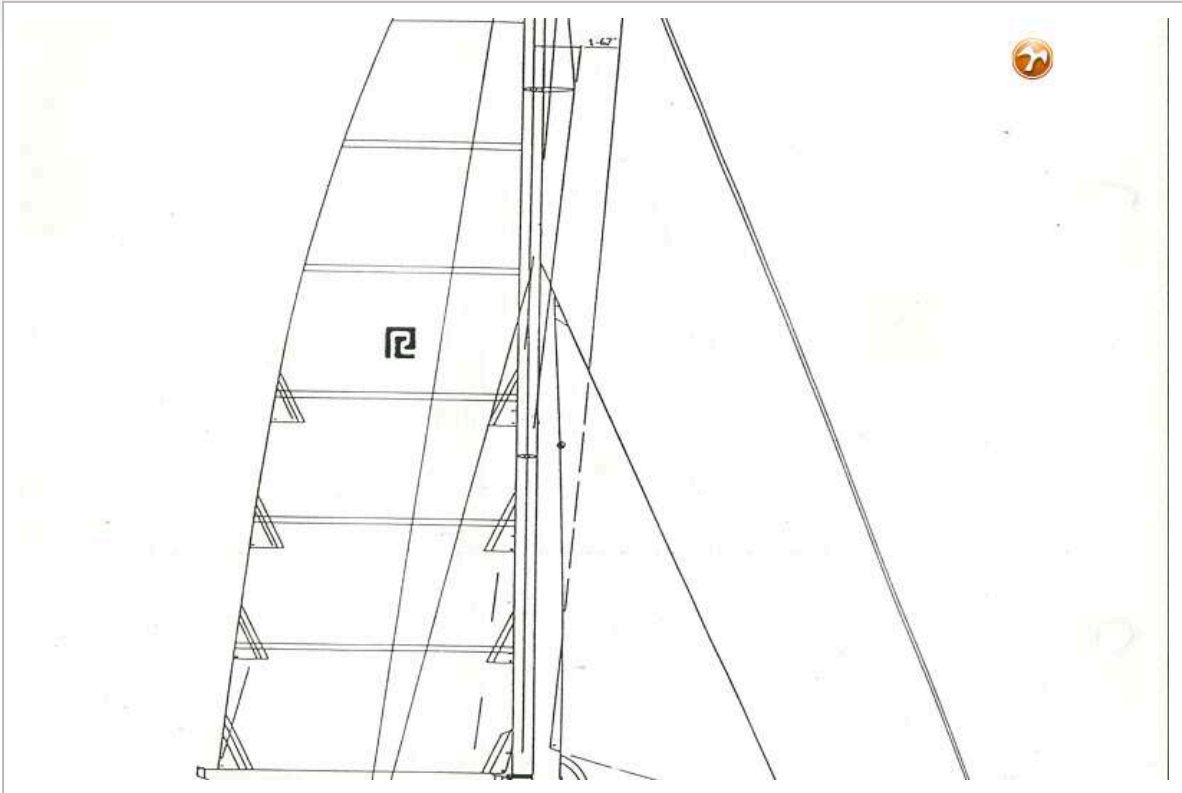


ESCALE 39

FAMILY



PROUT 39 ESCALE



PROUT 39 ESCALE

