



ROBERT CLARK 64 PILOTHOUSE



ROBERT CLARK 64 PILOTHOUSE

BROKER'S COMMENTS

This aluminium Robert Clark 64 is designed and built for comfortable liveaboard Blue Water cruising. She is easy to handle with a small crew and well-suited to both coastal exploration and offshore passages. Her pilothouse offers excellent visibility, safe watchkeeping, enabling easy all-weather sailing and protection while managing the sails from the cockpit behind it. In the second (aft) cockpit is an additional helm. On deck is plenty of space for sunbathing, dolphin spotting, star gazing and relaxation. Below deck you'll find a large aft saloon and 3 cabins. Available for viewing in Spain.

Jan-Ward van Dantzig

SPECIFICATIONS

Dimensions	19.67 x 4.68 x 2.20 (m)	Builder	William King & Sons (in Essex)
Built	1982	Cabins	3
Material	Aluminium	Berths	8
Engine(s)	2 x Caterpillar 3056 TURBO diesel	Hp/Kw	2 x 125.00 (hp), 92.00 (kw)
Asking price	€ 425.000 (VAT Paid)	Lying	Spain

CONTACT

Sales office	De Valk Thuishaven	Telephone	+31 35 5829042
Address	Peperstraat 7 1411 PX Naarden NL	E-mail	thuishaven@devalk.nl

DISCLAIMER

These particulars are given in good faith as supplied but cannot be guaranteed.



ROBERT CLARK 64 PILOTHOUSE

GENERAL

Model	ROBERT CLARK 64 PILOTHOUSE
Type	sailing yacht
LOA (m)	19,67
Beam (m)	4,68
Draft (m)	2,20
Air draft (m)	21,00
Headroom (m)	2,05
Year built	1982
Builder	William King & Sons (in Essex)
Country	United Kingdom
Designer	Robert Clark
Displacement (t)	33
Ballast (tonnes)	lead in aluminum
CE norm	NA
Hull material	aluminium
Hull colour	Flag blue AWL-GRIP
Hull thickness (mm)	5.9 - 8.45
Hull shape	S-bilged (semi)
Keel type	long keel (semi)
Superstructure material	aluminium
Rubbing strake	wood Teak
Deck material	aluminium
Deck finish	non-skid paint
Superstructure deck finish	non-skid paint
Cockpit deck finish	teak & non-skid paint on floor
Antifouling (year)	The old antifouling layers were removed from the underwater hull down to the epoxy system, after which new epoxy coatings and a fresh layer of antifouling were applied in July 2023
Dorades	3 x Stainless steel
Window frame	aluminium
Window material	tempered glass



ROBERT CLARK 64 PILOTHOUSE

Deckhatch	7 x Giot & 2 x Gebo
Portholes	aluminium
Insulation	foam plates
Fuel tank (litre)	aluminium 750 L
Fuel tank 2 (litre)	aluminium 1050 L (cleaned in 2020)
Level indicator (fuel tank)	yes
Freshwater tank (litre)	aluminium 1500 + 240 L (cleaned in 2019, then continuously used+refilled)
Level indicator (freshwater)	yes
Blackwater tank (litre)	aluminium 70 L (cleaned in 2019)
Level indicator (blackwater)	with an alarm
Blackwater tank extraction	deck extraction + pump Electric Rheinstrom pump
Greywater tank (litre)	aluminium Floater & electric pump (both cleaned in 2019) & deck extraction
Wheel steering	hydraulic
Inside helm position	Varnished teak steering wheel with a Simrad RPU 3000 hydraulic pump
Outside helm position	mechanical Stainless steel steering wheel in the aft cockpit
Emergency tiller	yes
More info on paintwork	Some spot repairs in the painting on the hull and around all portholes were repainted in December 2023. Afterwards, the hull was professionally polished and treated with a UV-protective wax in December 2023
Extra info	Rudder mounted on a skeg (supported at both the top and bottom)
Extra info	The Rheinstrom waste-water pump was cleaned, serviced, and fitted with new bearings and new carbon brushes, and all hoses from the waste-water tank were replaced in August 2023

ACCOMMODATION

Cabins	3
Berths	8
Interior	teak



ROBERT CLARK 64 PILOTHOUSE

Floor	teak and holly
Pilot house	Headroom: 1.86 m
Saloon	In the stern of the vessel - green upholstery (2020)
Headroom saloon (m)	1.90
Heating	central heating Kabola B-Tap (serviced in 2023 & 3x new radiator in 2020)
Heating 2	stove diesel
Chart table	On the starboard side (in the pilothouse)
Dining room	In the stern of the vessel
Dinette to convert into berth	yes
Opening door to cockpit	From both the pilothouse and the aft saloon
Galley	In the stern of the vessel - Headroom: 1.90 m
Countertop	corian Anthracite
Sink	stainless steel 2 x
Cooker	calor gas 4 x burner (gimbaled) / pit (cardanisch) / Flammen (kardanisch)
Oven	Cannon Filda Way grill/oven (calor gas)
Extractor	(2020)
Microwave/oven combi	Sharp Express (microwave / grill / convection oven), 220 V
Fridge	Isotherm refrigerator with two stainless-steel drawers
Freezer	Isotherm freezer with two stainless-steel drawers
Hot water system	220V Kabola B-Tap heater
Water pressure system	electrical Jabsco & 22 Litre Jabsco Accumulator tank (both 12/2023)
Owners cabin	double bed + single bed In front cabin / in de voorkajuit / im Vorderekabine
Bed length (m)	2.03 x 1.40 m (Port-side) & 2.05 x 0.80 m (Starboard)
Wardrobe	hanging/drawers/shelves
Bathroom	separate
Toilet	separate (flushes with sea water / met zeewater / mit Meerwasser gespült)
Toilet system	electric Jabsco (11/2023) with grinder & Vacuum toilet lid (2020)
Wash basin	in the bathroom



ROBERT CLARK 64 PILOTHOUSE

Shower	shared
Extra info	Mattresses on Port-side in front cabin (2020). Headroom in the front cabin: 1.80 - 1.90 m. Headroom in bathroom: 1.86 m. Headroom in toilet: 1.90 m
Guest cabin 1	bunk bed Starboard cabin / Stuurboord hut / Steuerbord Kabine
Bed length (m)	2.00 x 0.77 m
Wardrobe	shelves
Extra info	Headroom starboard cabin: 1.88 m
Guest cabin 2	bunk bed Port-side cabin / Bakboord hut / Backbord Kabine
Bed length (m)	2.00 x 0.80 m
Wardrobe	shelves
Extra info	Mattresses in port-side cabin (2020). Headroom port-side cabin: 1.90 - 2.17 m
Guest cabin 3	single bed In gangway from stern to bow / in doorgang / im Durchgang
Bed length (m)	2.00 x 0.65 m
Wardrobe	shelves
Extra info	Headroom in the gangway from stern to bow: 1.82 m
Extra info	Amarflex (thermal insulation) installed under the saloon sofa (2020)

MACHINERY

No of engines	2
Make	Caterpillar
Type	3056 TURBO
HP	125
kW	92
Fuel	diesel
Year installed	2006
Maximum speed (kn)	9
Cruising speed (kn)	8
Consumption (l/hr)	5



ROBERT CLARK 64 PILOTHOUSE

Engine hours	1000
Engine cooling system	freshwater heat exchanger
Drive	shaft
Shaft seal	2 x Volvo Seal; Port side : new in 2023 & Starboard side : new in 2020
Engine controls	electrical & bowden cable
Gearbox	hydraulic
Exhaust	watercooled
Thrust bearing	yes
Propeller type	folding
Propeller blades	2 x 4-blade Vari-Prop (serviced & readjusted July 2023)
Propeller shaft material	stainless steel
Shaft lubrication	water
Manual bilge pump	1 x
Electric bilge pump	4 x electric/automatic and 2 x electric
Bilge alarm	yes
Electrical installation	12 & 24 & 220 Volt
Generator	silent separator Mastervolt Whisper M-SC8
Running hours generator	130
Batteries	2 x 140 Ah spare batteries - 24 V for emergency (02/2025)
Start battery	4 x 50 Ah Optima Red Top - 24 Volt (2019)
Service battery	12 x 2 V 630 Ah (November 2022 - in use since July 2023)
Generator battery	1 x 60 Ah Napa - 12 V (August 2023)
Battery monitor	Mastervolt Charger Control & Link 10 Battery Condition meter
Battery charger	2 x Mastervolt Mass 24V/100A & 1 x 24V/25A
Inverter	Mastervolt Mass Sine 24V/2500W
Diode battery combiners	(2022)
Shorepower	with cable
Insulation transformer	yes
Watermaker	Spectra Watermaker MPC-3000 (2007 - never used)
Extra info	Leak voltage gauge connected to the hull
Extra info	Mastervolt IVO Smart



ROBERT CLARK 64 PILOTHOUSE

Extra info

Headroom in engine room: 1.05 m and at workbench: 1.45 - 1.77 m

NAVIGATION

Compass

1x Simrad IS15 & 1x Silva in aft cockpit (2023)

Electric compass

Danforth electric compass in the pilothouse

Depth sounder

Simrad IS15 Depht Multi

Log

Simrad IS15 Speed Multi

Windset

Simrad IS15 Wind Multi

Repeater

Simrad IS15

VHF

Icom IC-M501 VHF with microphone (July 2023)

VHF handheld

1 x Icom BC-166

Autopilot

Simrad Robertson AP22 with hydraulic Simrad RPU3000 pump

Rudder angle indicator

Simrad IS15 rudder indicator

Radar

Furuno NXT radar antenna on starboard side in mizzen mast (2020)

Radar/GPS/plotter

Furuno NXT (2020)

Navtex

Furuno NX-300 Navtex

PC connection

yes

Wifi antenna

yes

Electronic chart(s)

yes

AIS transceiver

yes

Radio receiver

Furuno SSB Transceiver FS-1562-15

Transmitter

with Furuno Antenna Coupler & Intellian Satellite Receiver (Tuner)

EPIRB

yes

Navigation lights

LED (LEPO LED 3-color masthead light - 2019)

Searchlight

yes

Extra info

Isolated backstay used as antenna for SSB

EQUIPMENT



ROBERT CLARK 64 PILOTHOUSE

Sun awning	yes
Window cover	(inside the windows)
Boarding ladder	aluminum
Gangway	Folding aluminum gangway with teak grating
Anchor	Bruce
Anchor chain	Approx. 50 m galvanized chain
Windlass	electrical Maxwell
Capstan	On the windlass
Deck wash	Connection in the cockpit
Sea railing	wire
Grab rail (superstructure)	teak
Railing side opening gates	On both sides
Pushpit	Stainless steel
Pulpit	Stainless steel
Life raft	container Lalizas Iso-Raft (2019)
Life raft (pers)	8
Last life raft survey	2023
Lifejackets	4 x automatic (surveyed July 2023)
Lifebuoy	yes
Danbuoy	yes
Safety lines on deck	yes
Wiper	yes
Horn	air pressure
Radar reflector	Echomax in masthead of main mast
Fenders	yes
Mooring lines	yes
Spare parts	yes
TV	Samsung
Satellite	Intellian satellite receiver with tuner
Clock - barometer	Clock, Barometer and Barograph
Fire extinguisher	(2020)
Latest extinguisher survey	07/2023



Extinguisher in engine room	yes
Extra info	Double stainless steel sea railing wire with 90 cm high stanchions
Extra info	Up-down buttons for windlass on the bow

RIGGING

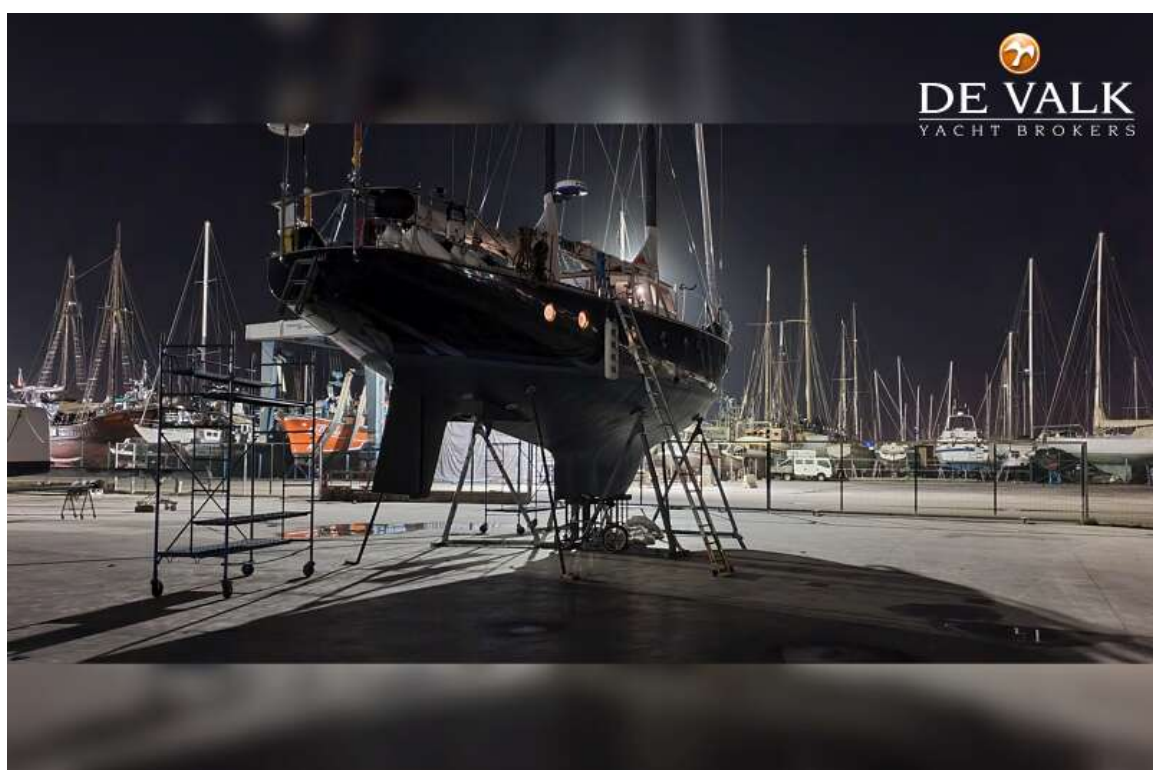
Rigging	ketch-cutter
Standing rigging	Dyform (2021)
Brand mast	Seldén (2009)
Material mast	aluminium coated Flag Blue sprayed
Spreaders	Flag Blue–sprayed open spreaders (2 sets on the main mast and 1 set on the mizzen)
Mainsail cover	Blue with Lazy Jacks (new topping applied in December 2023)
Battcars	On both masts
Fully battened mainsail	De Vries: Offshore Cruiser in Dacron (2009 - serviced 2021)
Mizzen	De Vries: Full-Batten Offshore Cruiser in Dacron (2009 - serviced 2021)
Mizzen sailcover	Blue with Lazy Jacks (new topping applied in December 2023)
Genoa	De Vries: Offshore Cruiser in Dacron (2009 - serviced 2021)
Genoa furler	Electric Bamar Magic MEJ1.02 (2009 - serviced and new motor installed in 2023)
Cutter furler	Electric Bamar Magic MEJ1.02 (2009 - serviced 2023)
Gennaker	1 x (190 m²)
Spinnaker	1 x Light Weather & 1 x Allround (202 m²)
Yankee	De Vries: Laminate DCX Furling Yankee (2009 - serviced 2021)
Removable innerforestay	Removable Kevlar stay for the storm jib
Stormjib	Offshore in Dacron (on removable Kevlar stay)
Reefing System	quick-one-line-reefing
Backstay adjuster	hydraulic Holmatro HIA 48-22S (overhauled/gereviseerd/überholt 2021)
Boomvang	gasspring 2 x Rodkicker
Primary sheet winch	2 x Andersen 46ST (manual - 2009)



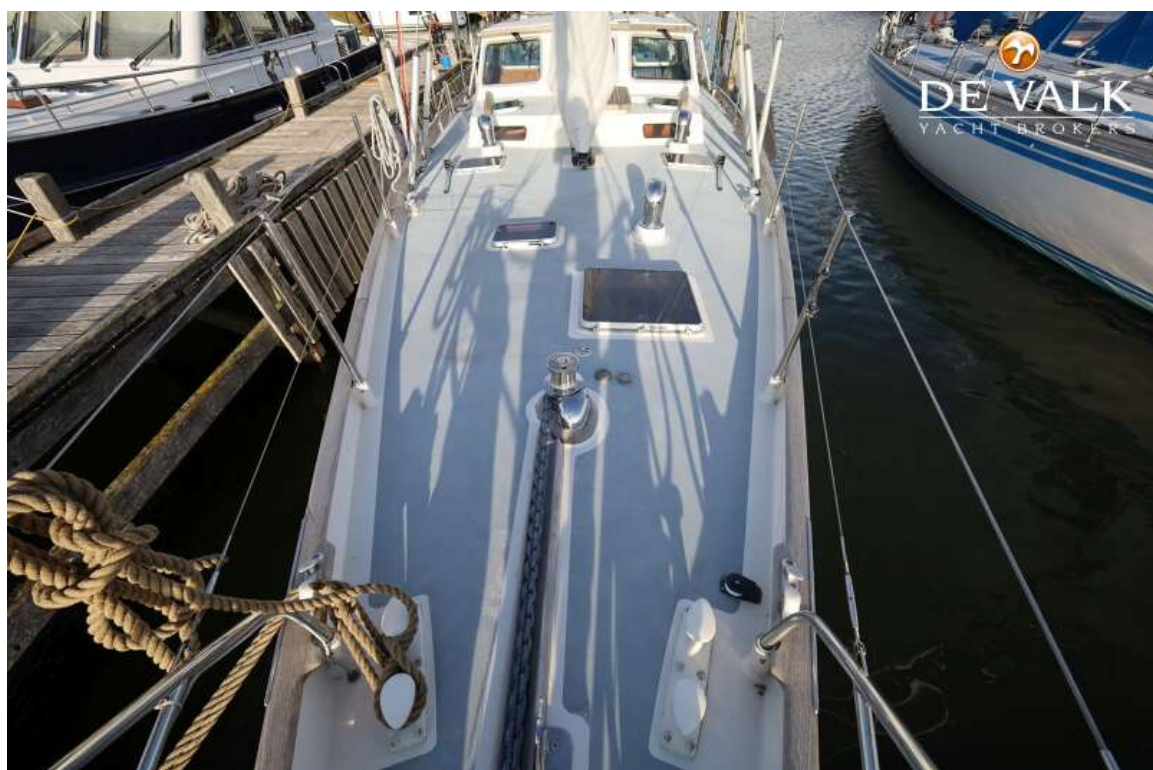
Secondary sheet winch	2 x Andersen 46ST (electric 1-speed - 2009)
Genoa sheetwinches	2 x Andersen 68ST (electric 2-speed - 2009)
Halyard winches	2 x Lewmar 48ST (manual - 2009) & 1 x Lewmar 40ST (manual - 2009) & 2 x Lewmar 28ST (manual)
Spinnaker winch	2 x Lewmar 40ST (manual - 2009)
Reefing winch	2 x Lewmar 28ST (manual)
Winchcovers	yes
Spi-pole	carbon Selden
Isolated backstay	(2021)
Extra info	Ronstan & Harken deck gear (blocks & rails) & Spinlock jammers
Extra info	2 x Antal tracks with jammers on the main mast (for the Yankee and Genoa halyards - allowing the hoisting sections of the halyards to be removed from the mast and stored inside after setting the sails)



ROBERT CLARK 64 PILOTHOUSE



ROBERT CLARK 64 PILOTHOUSE



ROBERT CLARK 64 PILOTHOUSE



ROBERT CLARK 64 PILOTHOUSE



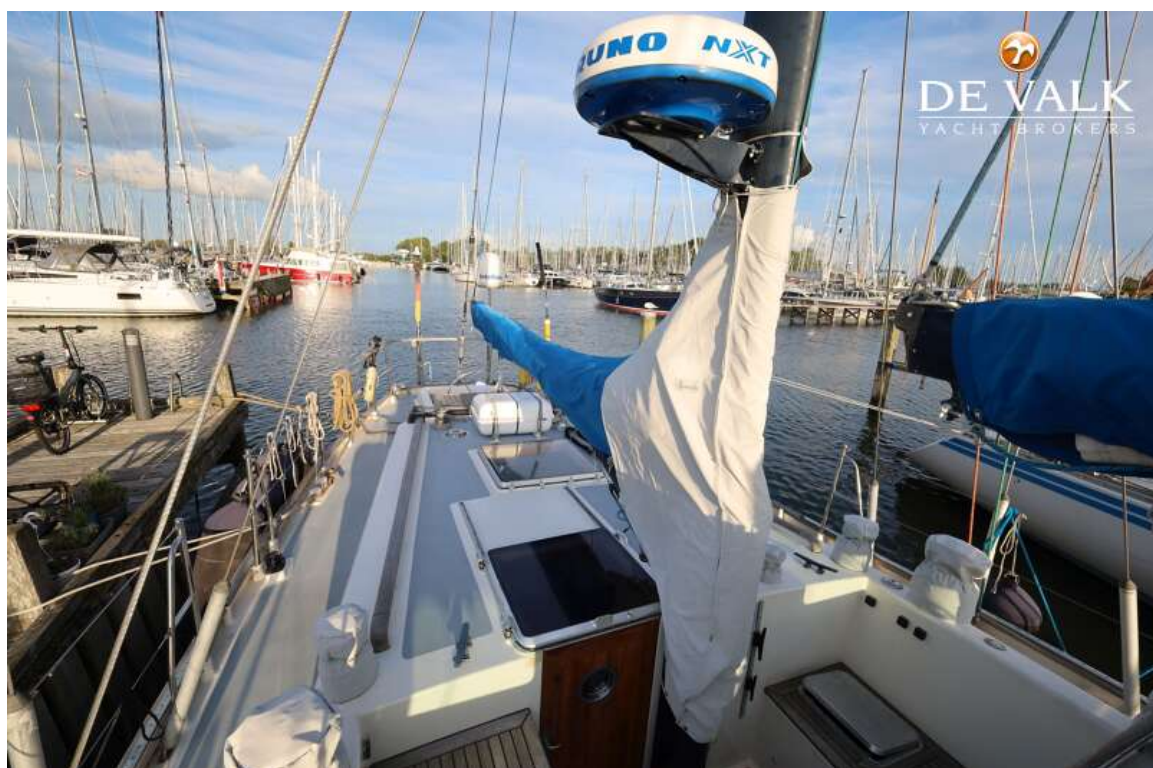
ROBERT CLARK 64 PILOTHOUSE



ROBERT CLARK 64 PILOTHOUSE



ROBERT CLARK 64 PILOTHOUSE



ROBERT CLARK 64 PILOTHOUSE



ROBERT CLARK 64 PILOTHOUSE



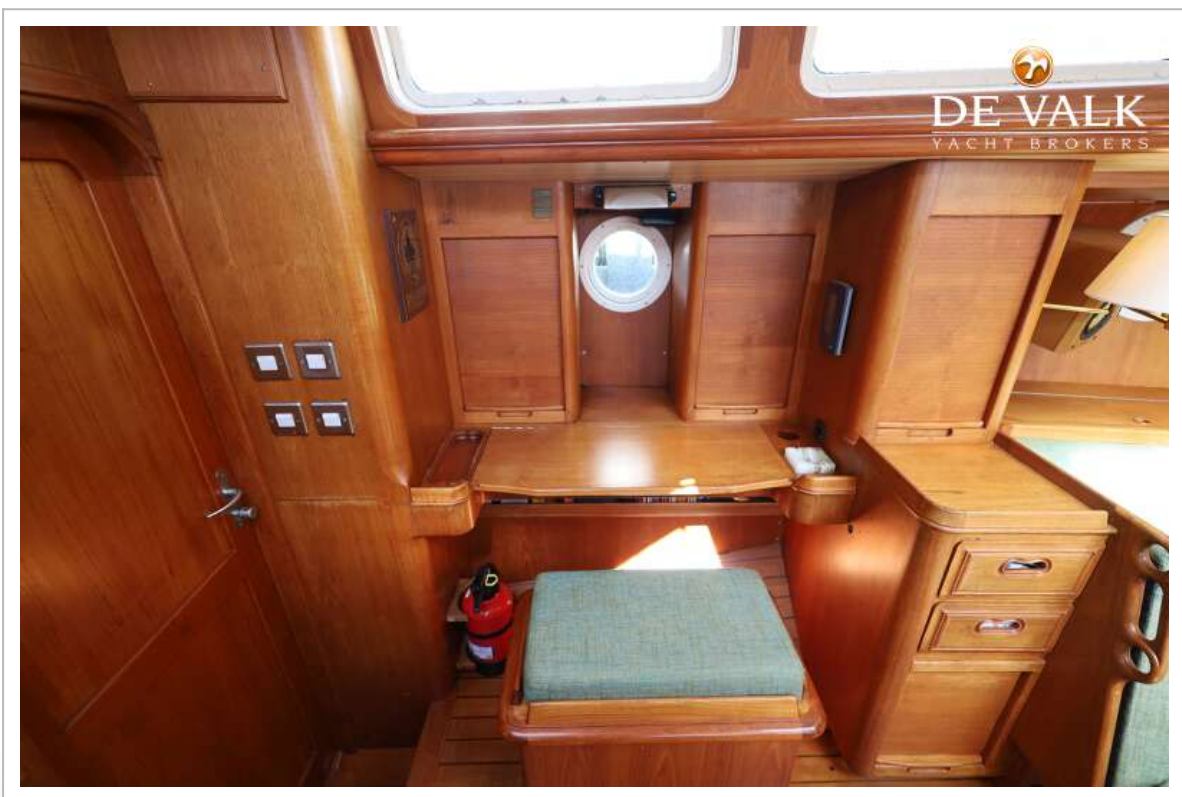
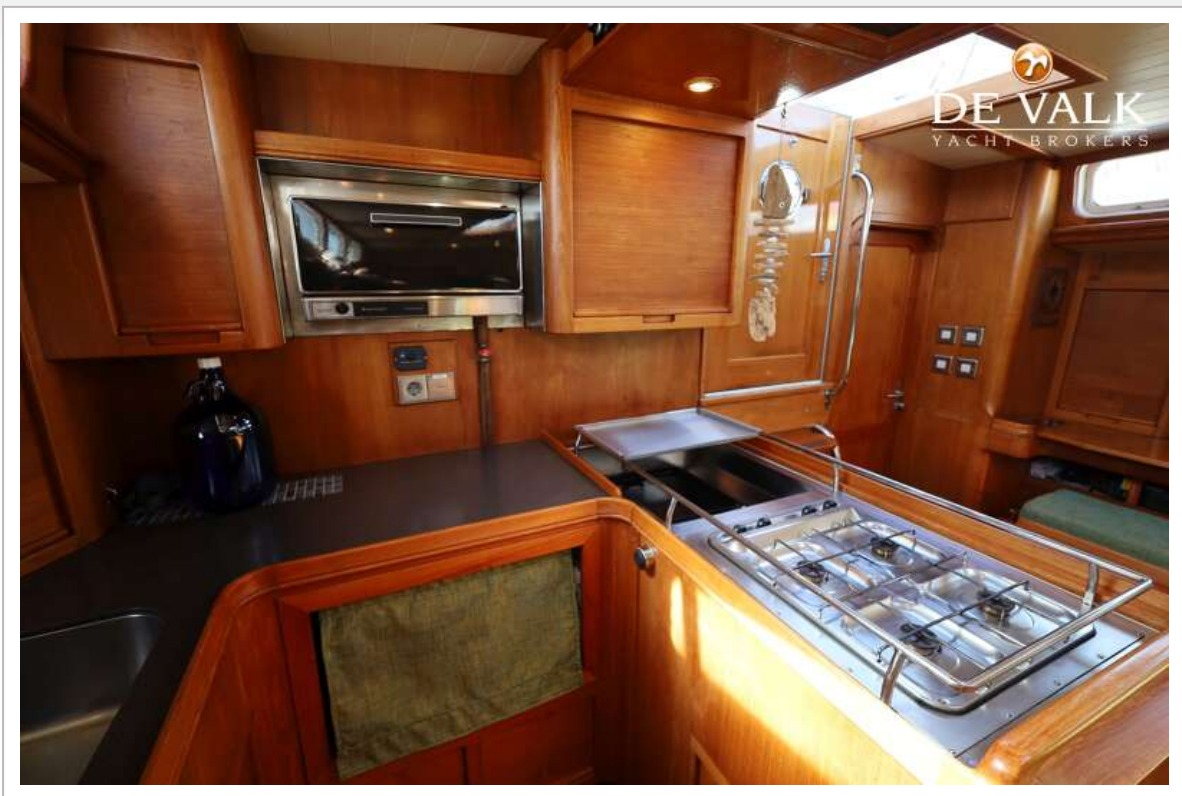
ROBERT CLARK 64 PILOTHOUSE



ROBERT CLARK 64 PILOTHOUSE



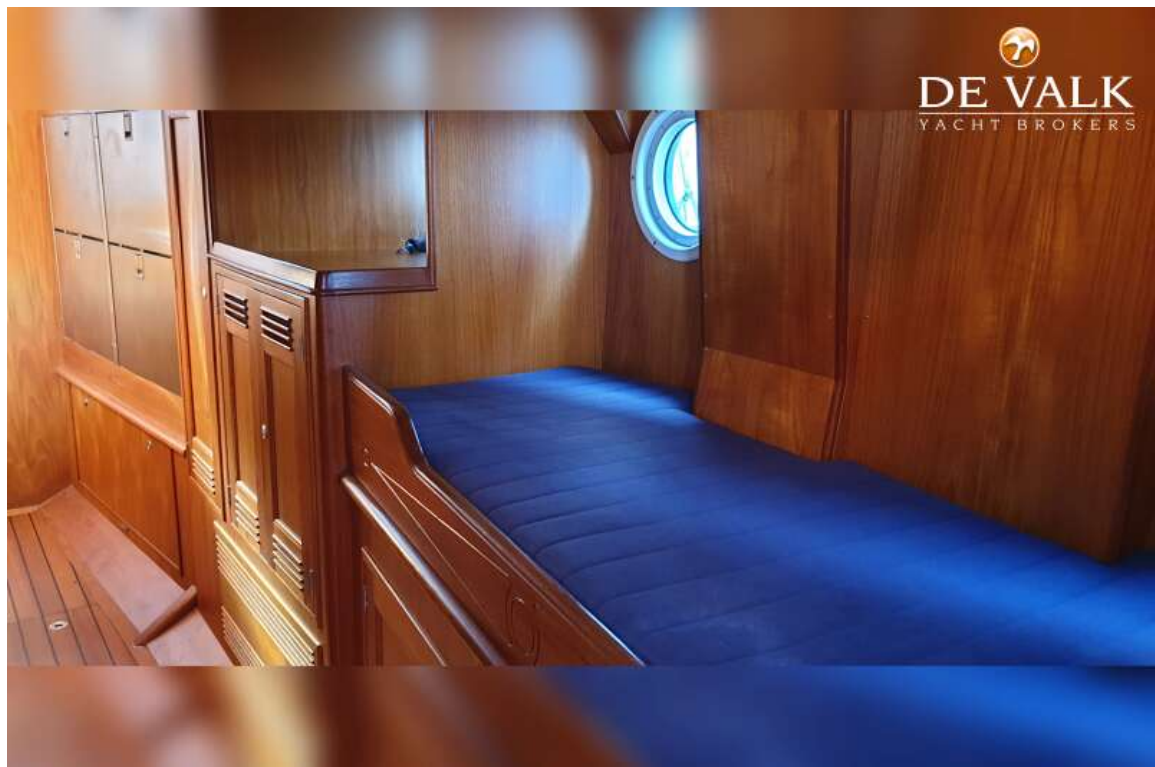
ROBERT CLARK 64 PILOTHOUSE



ROBERT CLARK 64 PILOTHOUSE



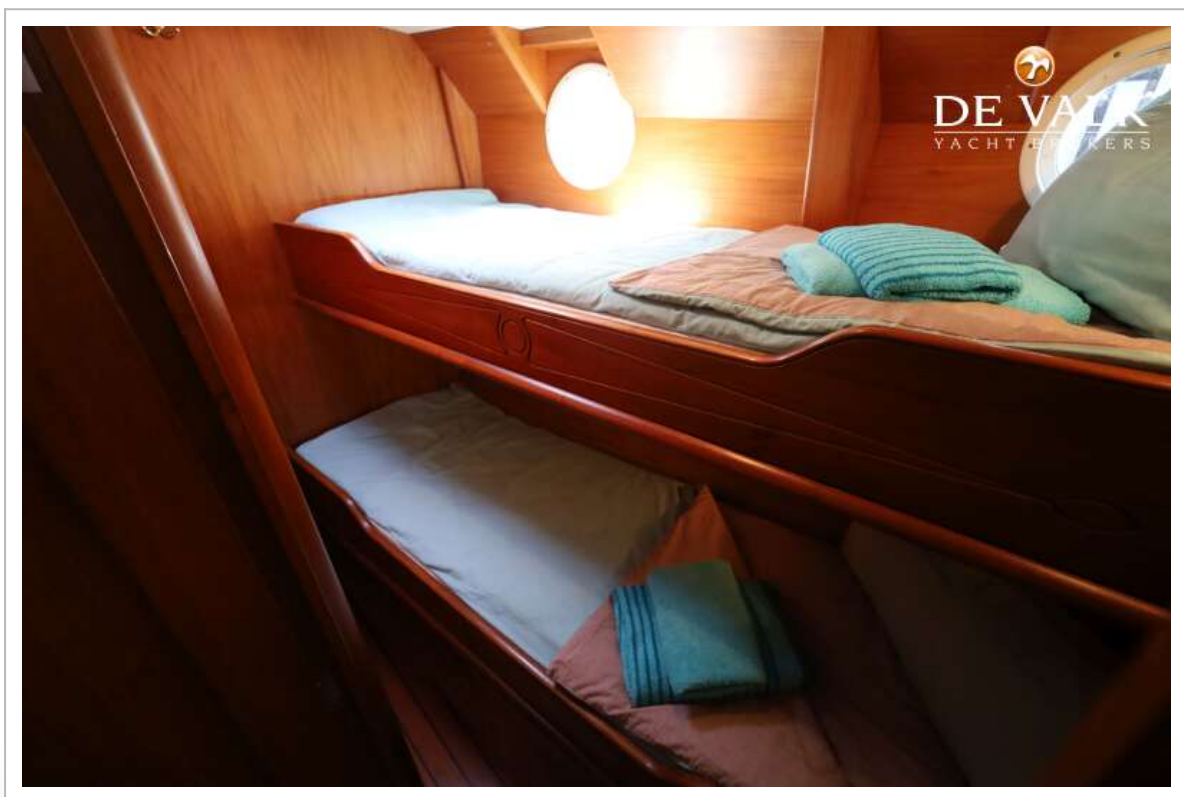
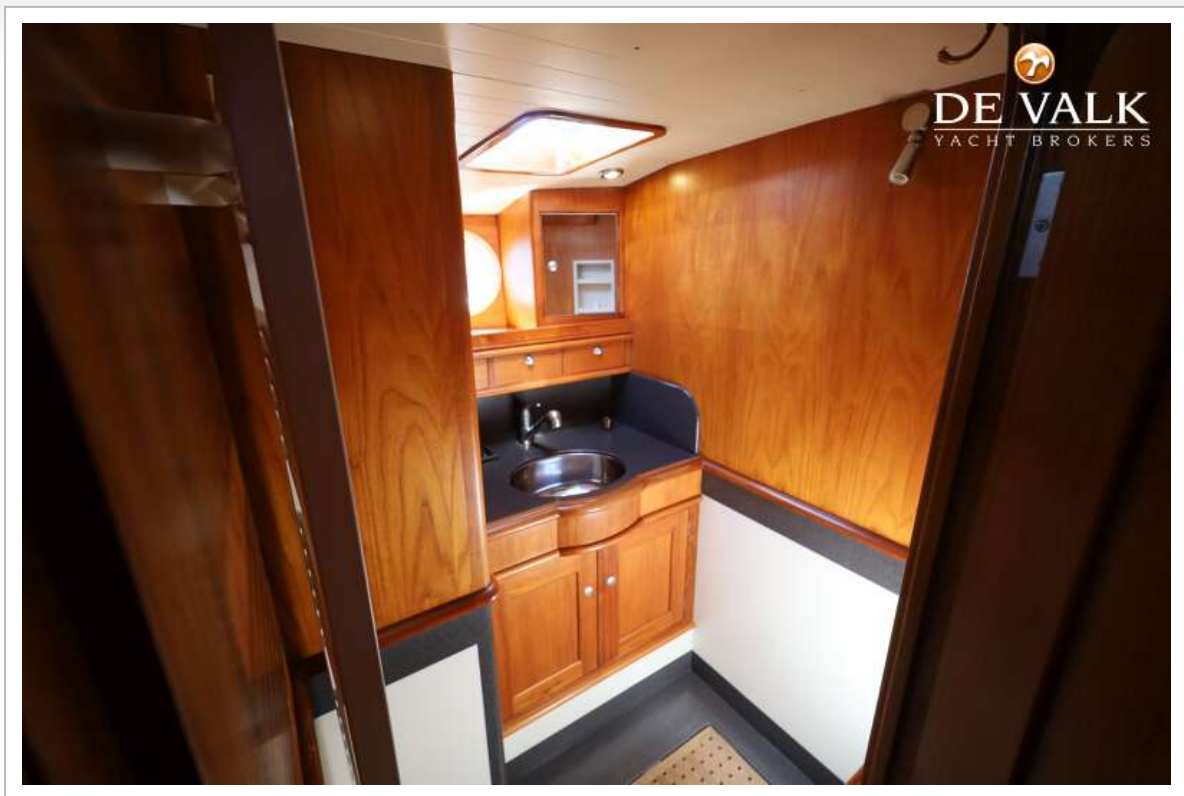
ROBERT CLARK 64 PILOTHOUSE



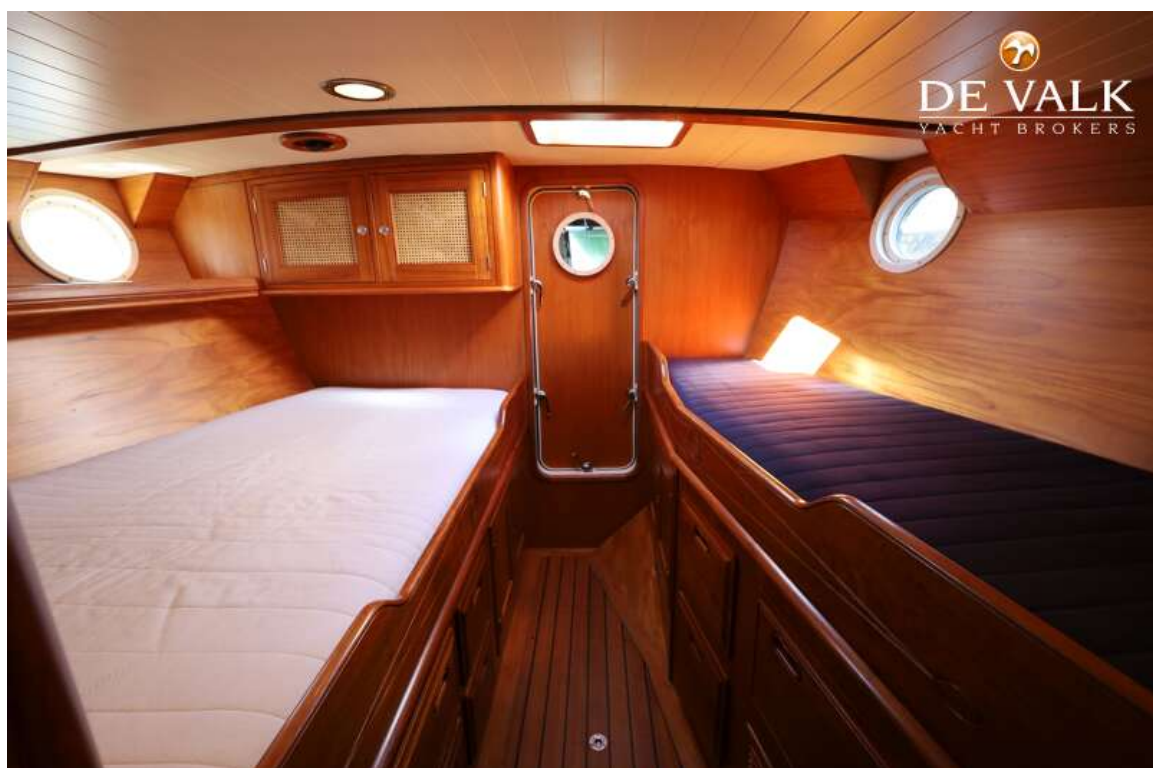
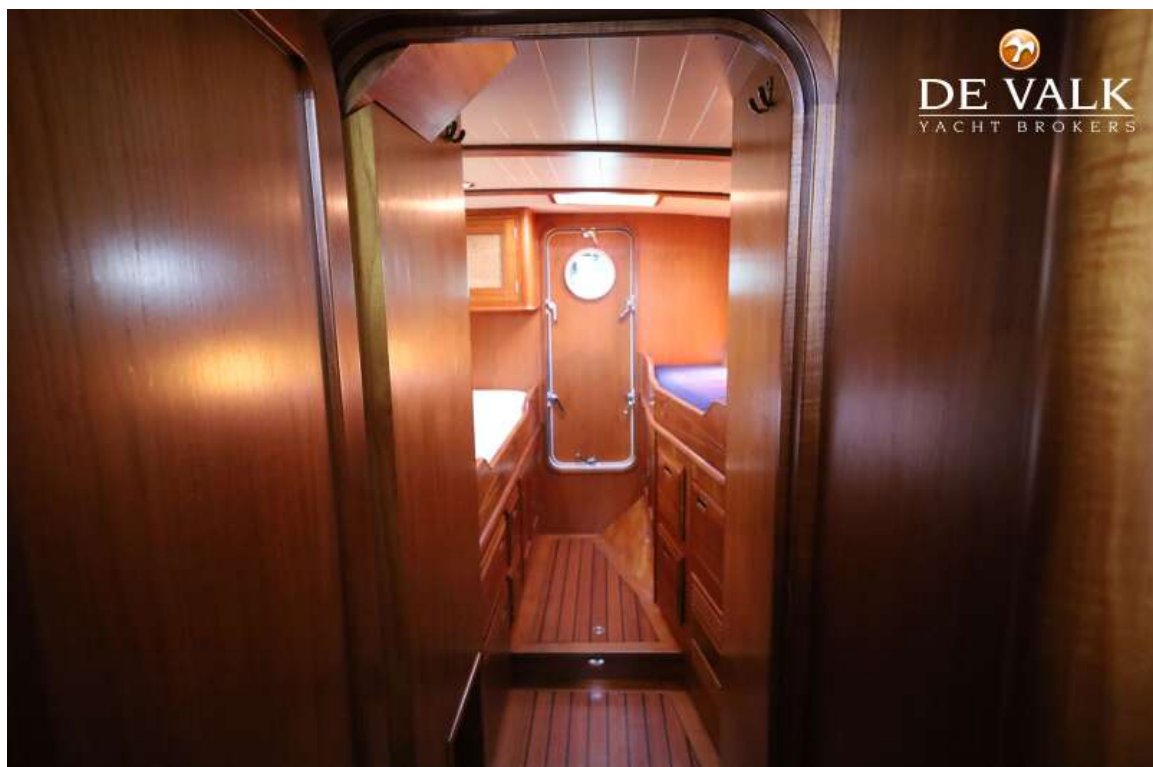
ROBERT CLARK 64 PILOTHOUSE



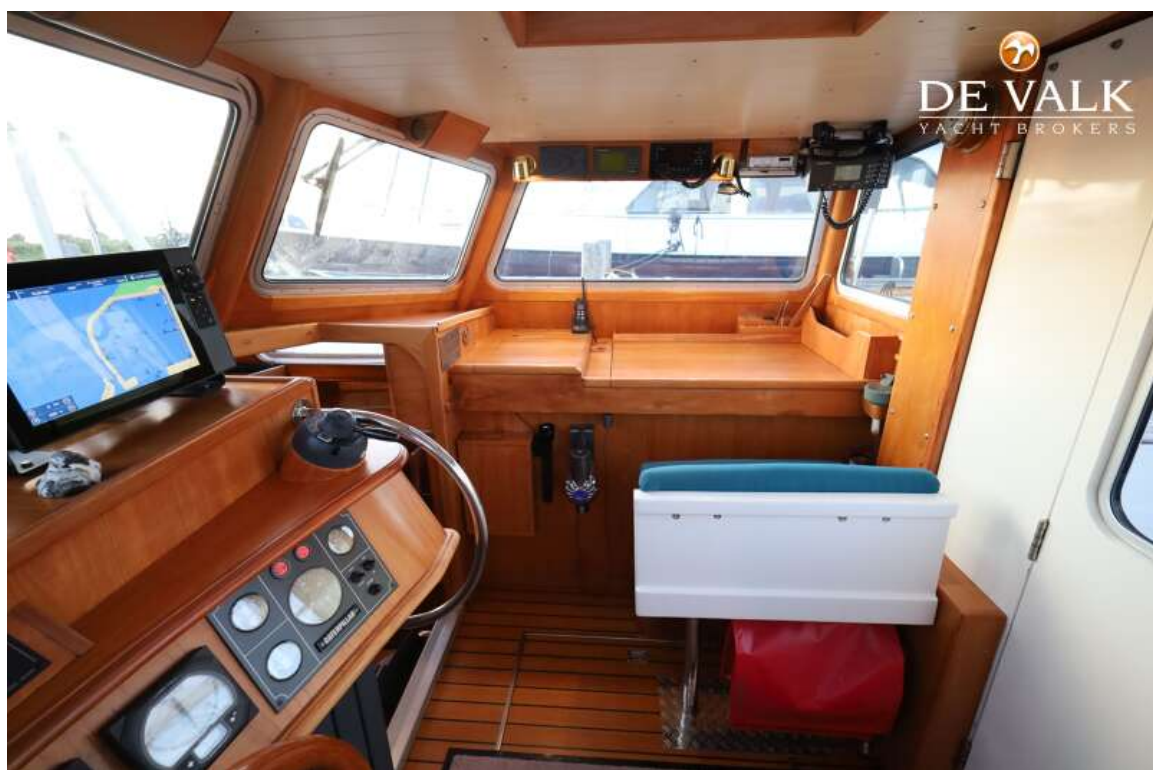
ROBERT CLARK 64 PILOTHOUSE



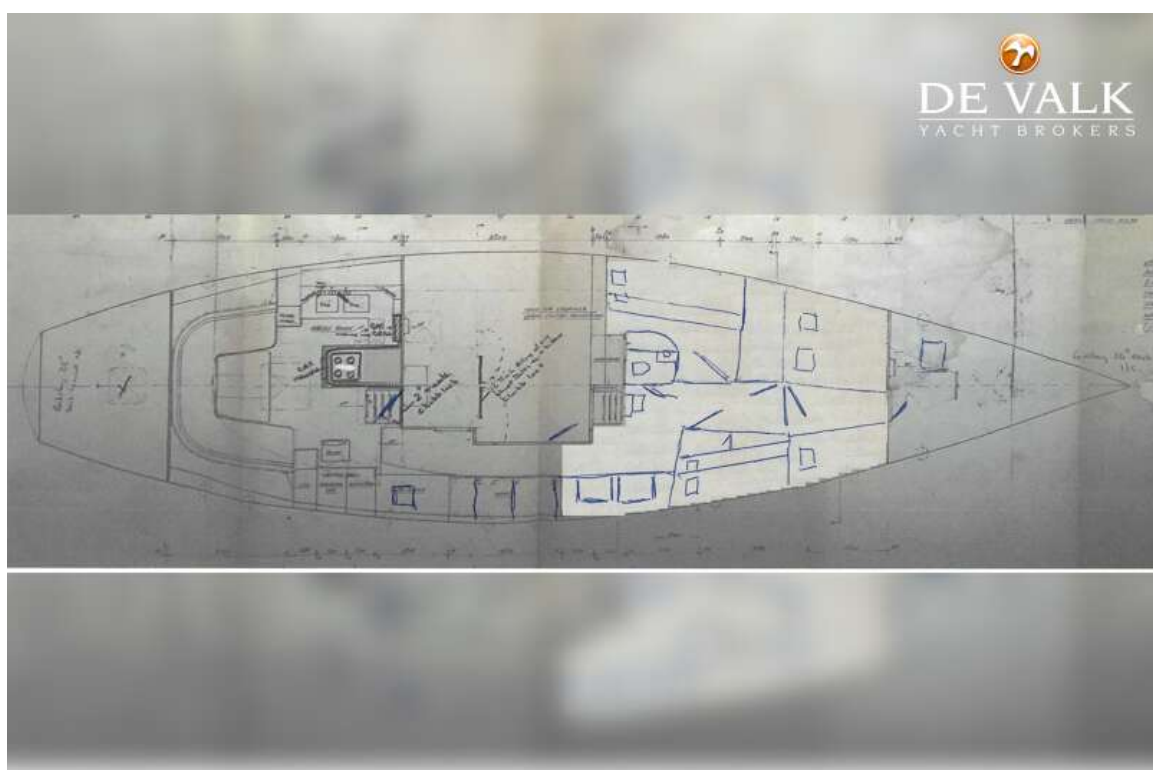
ROBERT CLARK 64 PILOTHOUSE



ROBERT CLARK 64 PILOTHOUSE



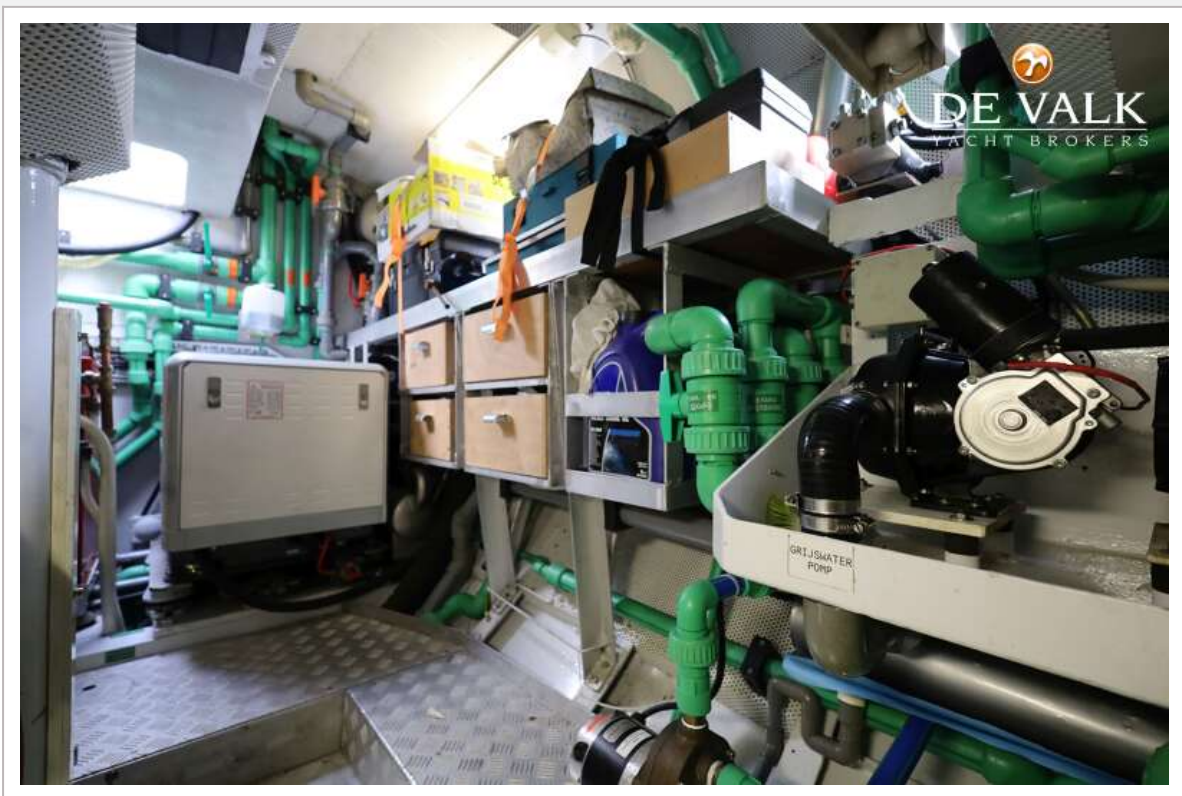
ROBERT CLARK 64 PILOTHOUSE



ROBERT CLARK 64 PILOTHOUSE



ROBERT CLARK 64 PILOTHOUSE



ROBERT CLARK 64 PILOTHOUSE

