



DE VALK  
YACHT BROKERS

BOWMAN 46



DE VALK  
YACHT BROKERS

BROKERAGE | CHARTER | BERTHS | FINANCE | INSURANCE | YACHT MANAGEMENT

# BOWMAN 46

## BROKER'S COMMENTS

Bowman 46, Elektra, is a Yawl with excellent performance but also ideal for live aboard. Having two double cabins layout plus convertible salon sofas, she can accomodate 6 people. 2nd owner since 2000.

*Sofia Ilia-Salvanou*

## SPECIFICATIONS

<b>Dimensions</b>	13.91 x 3.93 x 1.72 (m)	<b>Builder</b>	Bowman
<b>Built</b>	1975	<b>Cabins</b>	2
<b>Material</b>	GRP	<b>Berths</b>	8
<b>Engine(s)</b>	1 x Yanmar diesel	<b>Hp/Kw</b>	60.00 (hp), 44.16 (kw)
<b>Asking price</b>	€ 65.000 (VAT Paid)	<b>Lying</b>	elsewhere / Not at sales office

## CONTACT

<b>Sales office</b>	De Valk Corfu	<b>Telephone</b>	(+30) 266 111 8095
<b>Address</b>	New Port of Corfu, near Gouvia Marina 490 83 Corfu GR	<b>E-mail</b>	corfu@devalk.nl

## DISCLAIMER

These particulars are given in good faith as supplied but cannot be guaranteed.



## GENERAL

Model	BOWMAN 46
Type	sailing yacht
LOA (m)	13,91
Beam (m)	3,93
Draft (m)	1,72
Year built	1975
Builder	Bowman
Country	United Kingdom
Designer	Holman & Pye
Gross tonnage	15 T
Net tonnage	13,5 T
Hull material	GRP
Hull colour	blue ALL GRIP painted in 2016
Keel type	fin keel With skeg Rudder
Deck material	GRP
Deck finish	non-skid moulded in
Cockpit deck finish	teak
Antifouling (year)	2023
Window frame	aluminium
Window material	perspex
Deckhatch	yes
Portholes	aluminium
Flybridge suncover	yes
Fuel tank (litre)	GRP 250 Lt
Level indicator (fuel tank)	yes
Freshwater tank (litre)	GRP 400 Lt
Blackwater tank (litre)	polyethylene
Wheel steering	mechanical

## ACCOMMODATION



# BOWMAN 46

Cabins	2
Berths	8
Chart table	yes
Aft Cabin	yes
Dining room	yes
Dinette to convert into berth	yes
Galley	yes
Countertop	wood
Sink	stainless steel
Cooker	calor gas
Gas alarm	yes
Fridge	yes
Hot water system	220V + engine
Water pressure system	electrical
Manual and/or foot pump	yes
Owners cabin	double bed
Wardrobe	hanging/drawers/shelves
Bathroom	separate
Toilet	separate
Toilet system	manual
Shower	separate
Guest cabin 1	yes
Wardrobe	hanging and drawers
Bathroom	separate
Toilet	separate
Toilet system	manual
Wash basin	in the bathroom
Shower	separate

## MACHINERY

No of engines	1
---------------	---



<b>Make</b>	Yanmar
<b>HP</b>	60
<b>kW</b>	44.16
<b>Fuel</b>	diesel
<b>Year installed</b>	2007
<b>Engine hours</b>	2500
<b>Engine cooling system</b>	freshwater heat exchanger
<b>Drive</b>	shaft
<b>Shaft seal</b>	Replaced 2020
<b>Gearbox</b>	Replaced 2020
<b>Exhaust</b>	watercooled
<b>Propeller type</b>	fixed Plus one spare folding
<b>Propeller blades</b>	X 3
<b>Propeller shaft material</b>	stainless steel
<b>Shaft lubrication</b>	grease
<b>Manual bilge pump</b>	yes
<b>Electric bilge pump</b>	yes
<b>Bilge alarm</b>	yes
<b>Batteries</b>	yes
<b>Start battery</b>	1 X 12 V
<b>Service battery</b>	2 X 24 V
<b>Battery monitor</b>	yes
<b>Battery charger</b>	yes
<b>Inverter</b>	yes
<b>Wind generator</b>	yes
<b>Solar panel</b>	yes
<b>Shorepower</b>	yes
<b>Extra info</b>	Sea cocks inspected every year and two of them replaced
<b>Extra info</b>	Engine annually serviced

## NAVIGATION



Compass	yes
Depth sounder	yes
VHF	yes
VHF handheld	yes
Autopilot	yes
Wind vane steering install.	yes
Radar	yes
GPS	yes
EPIRB	yes
Navigation lights	yes

## EQUIPMENT

Sprayhood	yes
Cockpit cover	yes
Bimini	yes
Winter cover	yes
Cockpit table	yes
Boarding ladder	yes
Deck shower	yes
Anchor	Bugel
Anchor chain	90m
Anchor 2	Bruce
Windlass	electrical Fully serviced 2020
Dinghy	yes
Outboard	yes
Sea railing	stainless steel
Lifejackets	yes
Safety harness	yes
Safety lines on deck	yes
Horn	yes
Fenders	yes



Mooring lines	yes
Spare parts	yes
Tools	yes

## RIGGING

Rigging	yawl
Standing rigging	wire
Brand mast	Seldén
Material mast	aluminium
Mainsail	2017
Mainsail cover	yes
Cutterstay	yes
Furling boom	yes
Mizzen	2010
Mizzen sailcover	yes
Genoa	2020
Genoa furler	yes
Gennaker	yes





# BOWMAN 46





# BOWMAN 46



# BOWMAN 46





# BOWMAN 46



# BOWMAN 46

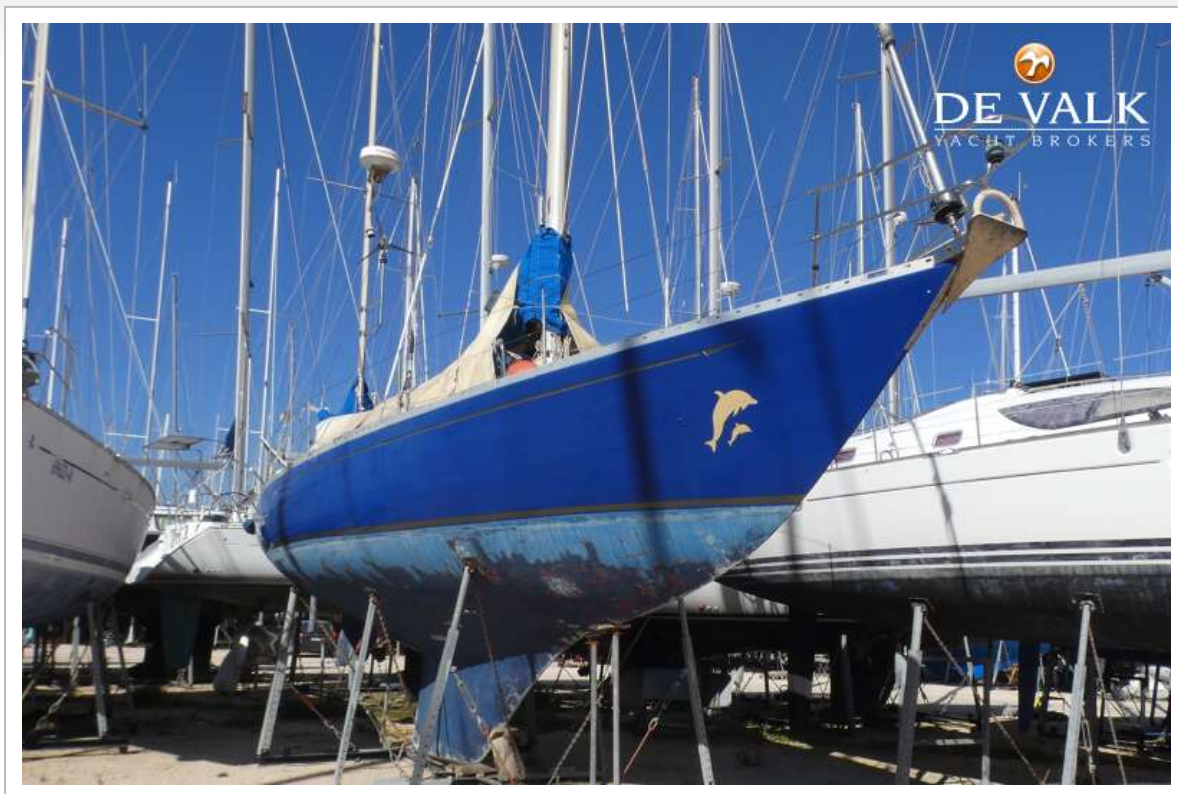




## BOWMAN 46

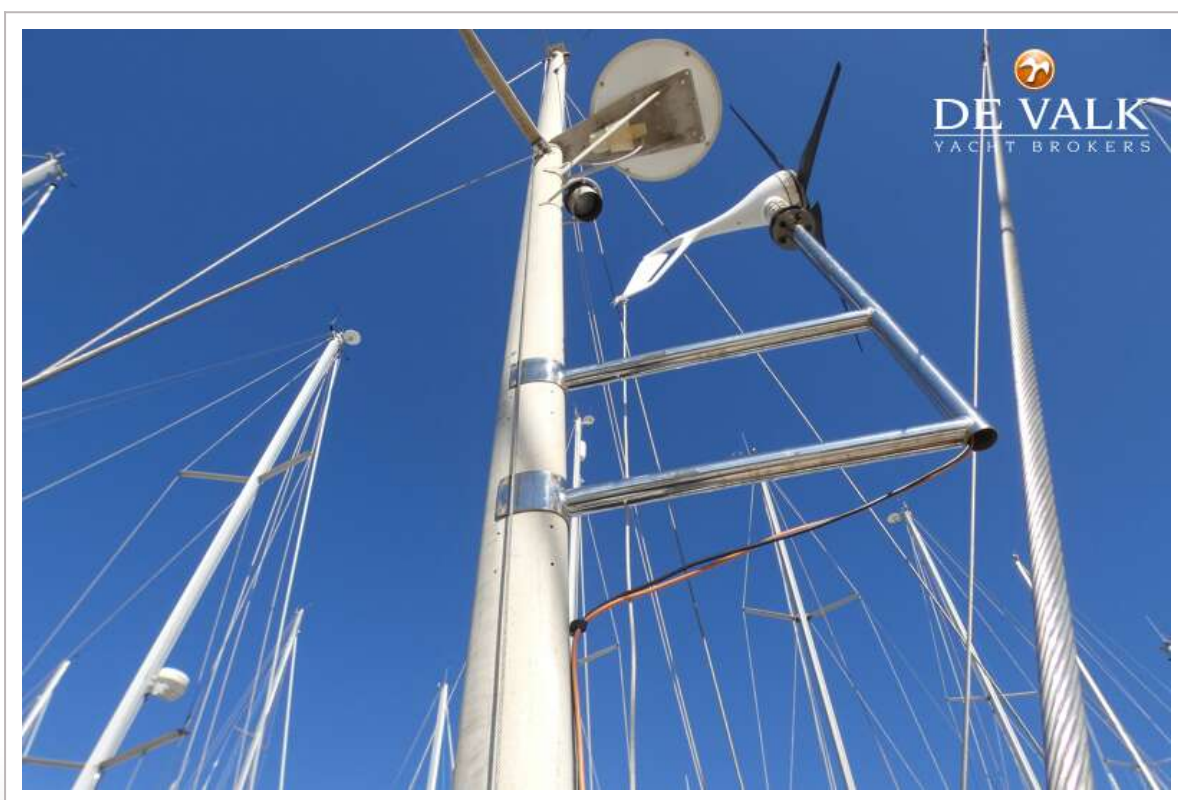
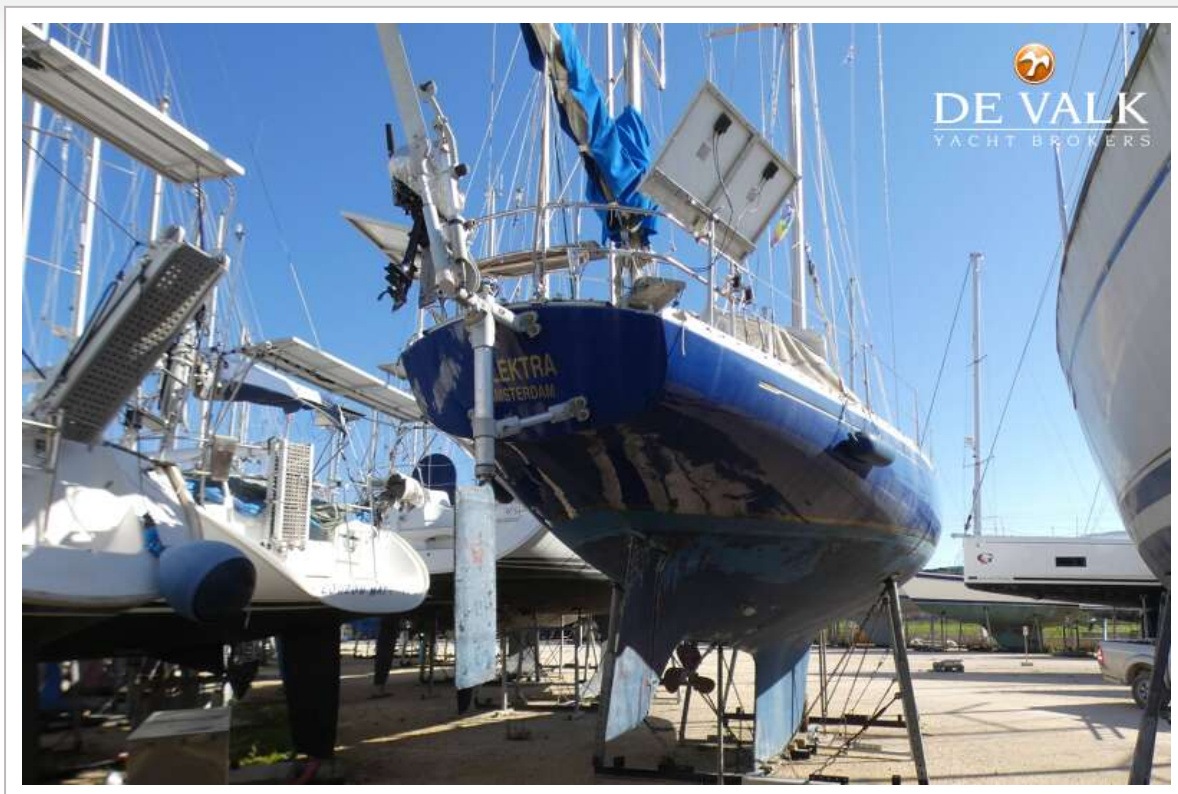


# BOWMAN 46





# BOWMAN 46

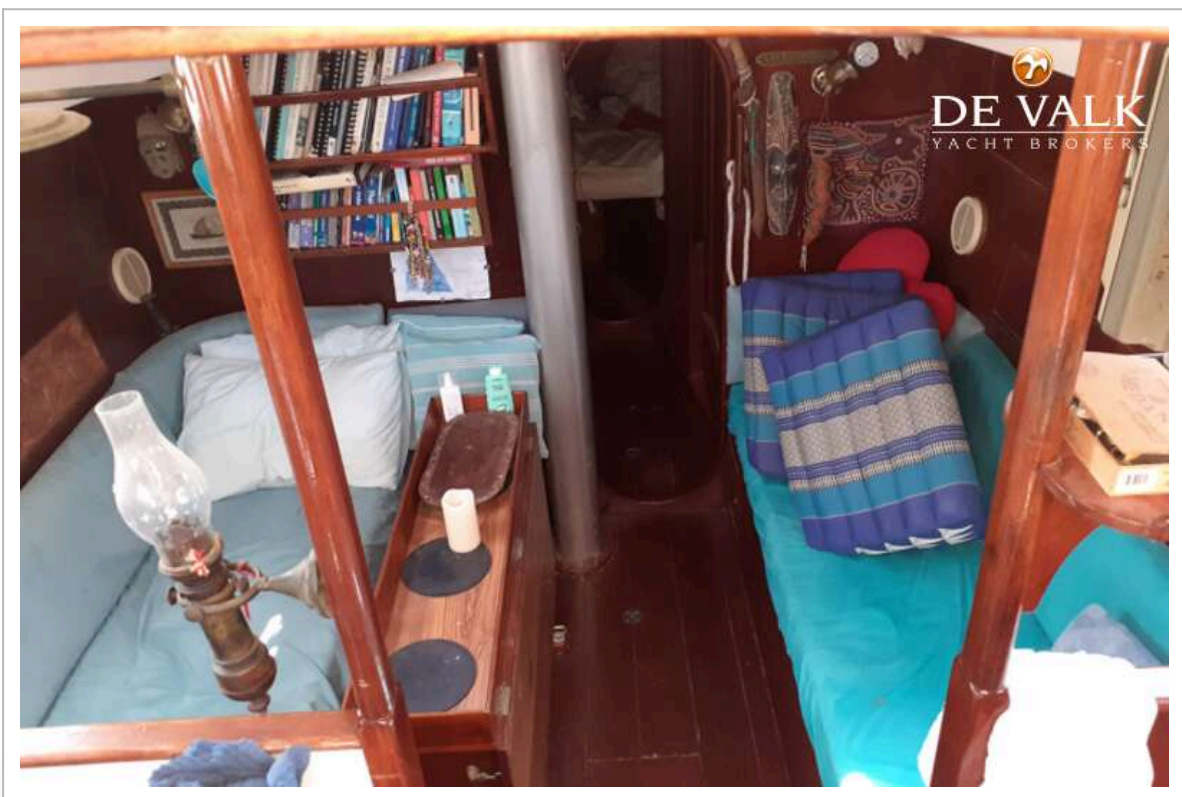




## BOWMAN 46

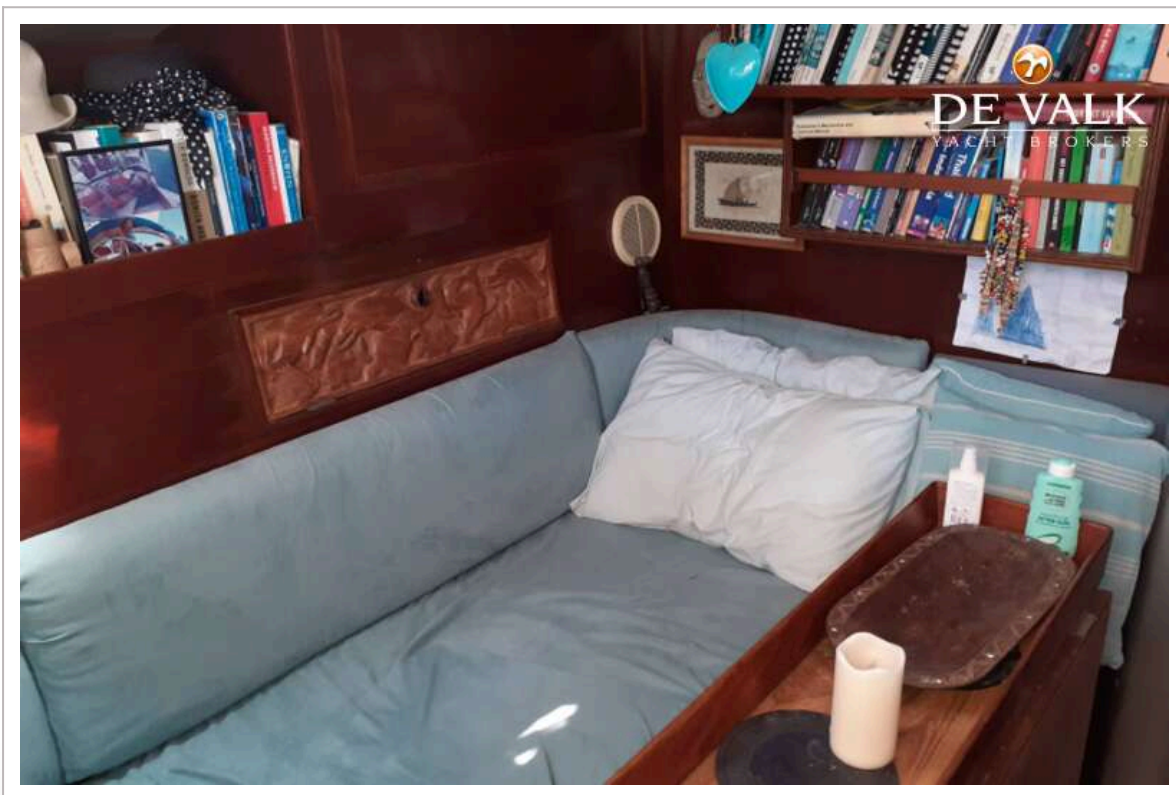


# BOWMAN 46

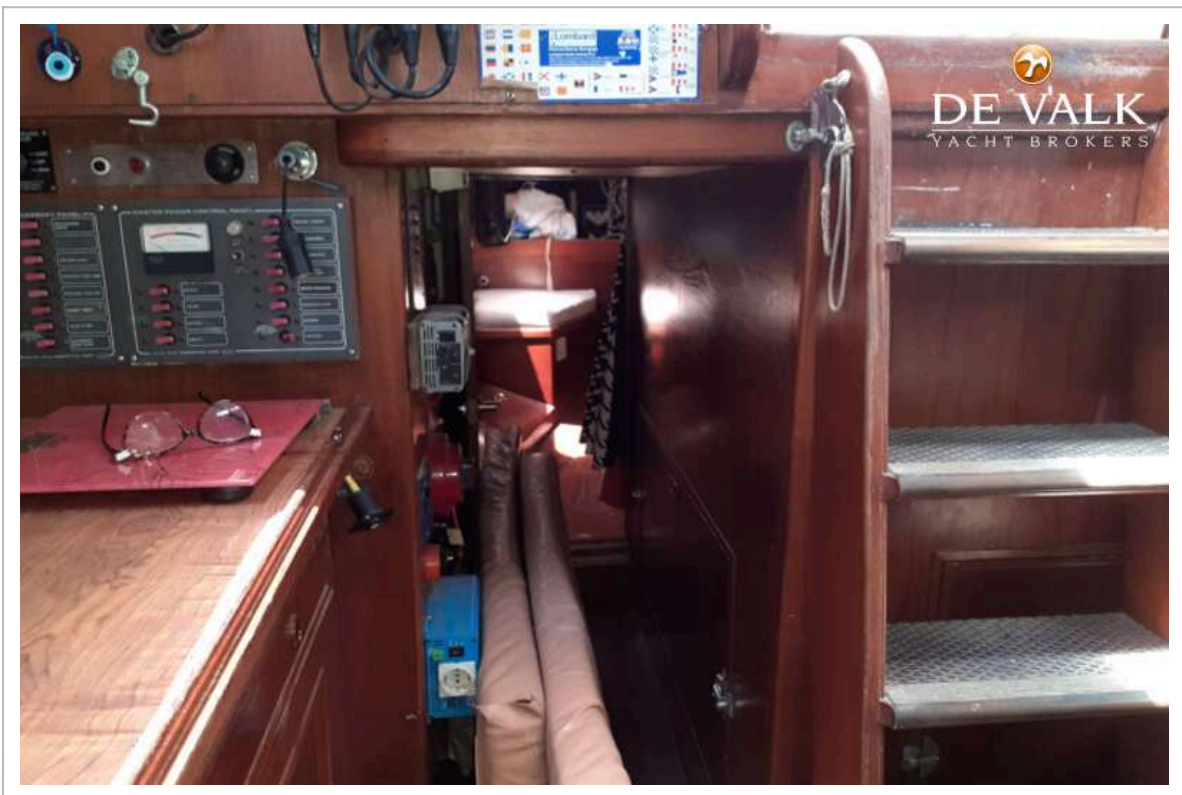
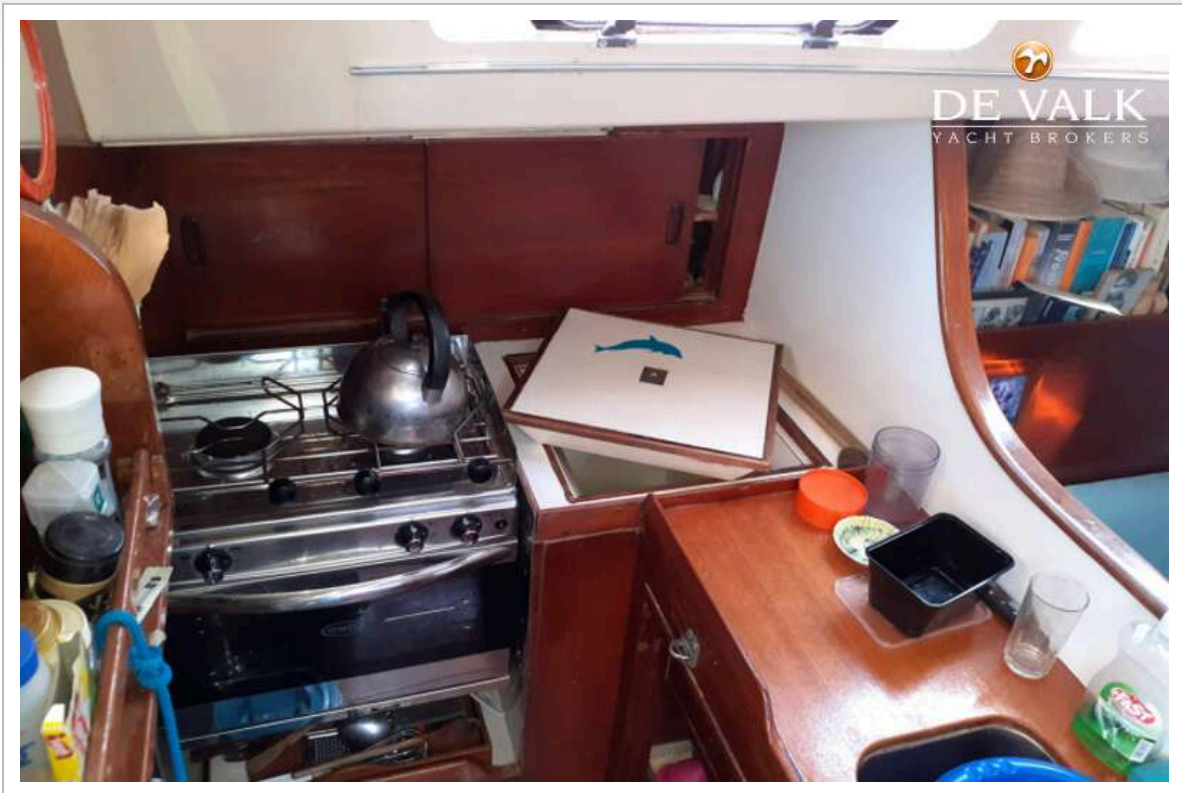




# BOWMAN 46

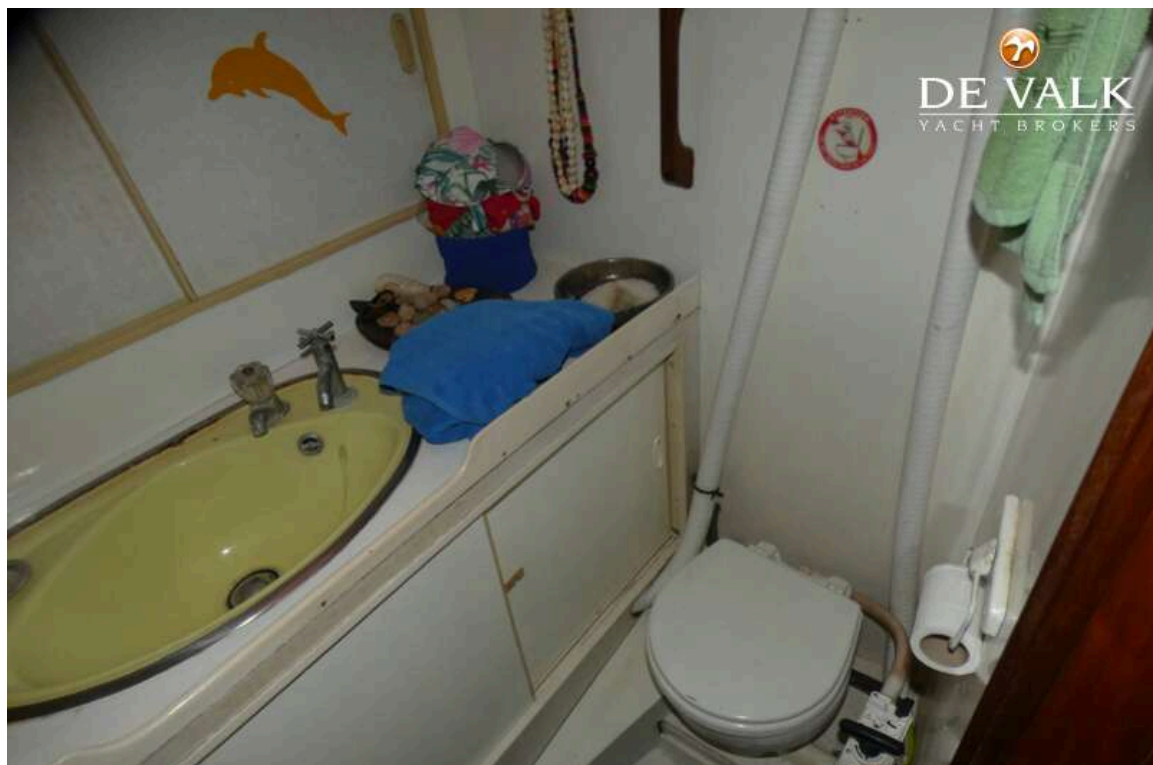


# BOWMAN 46





## BOWMAN 46



# BOWMAN 46





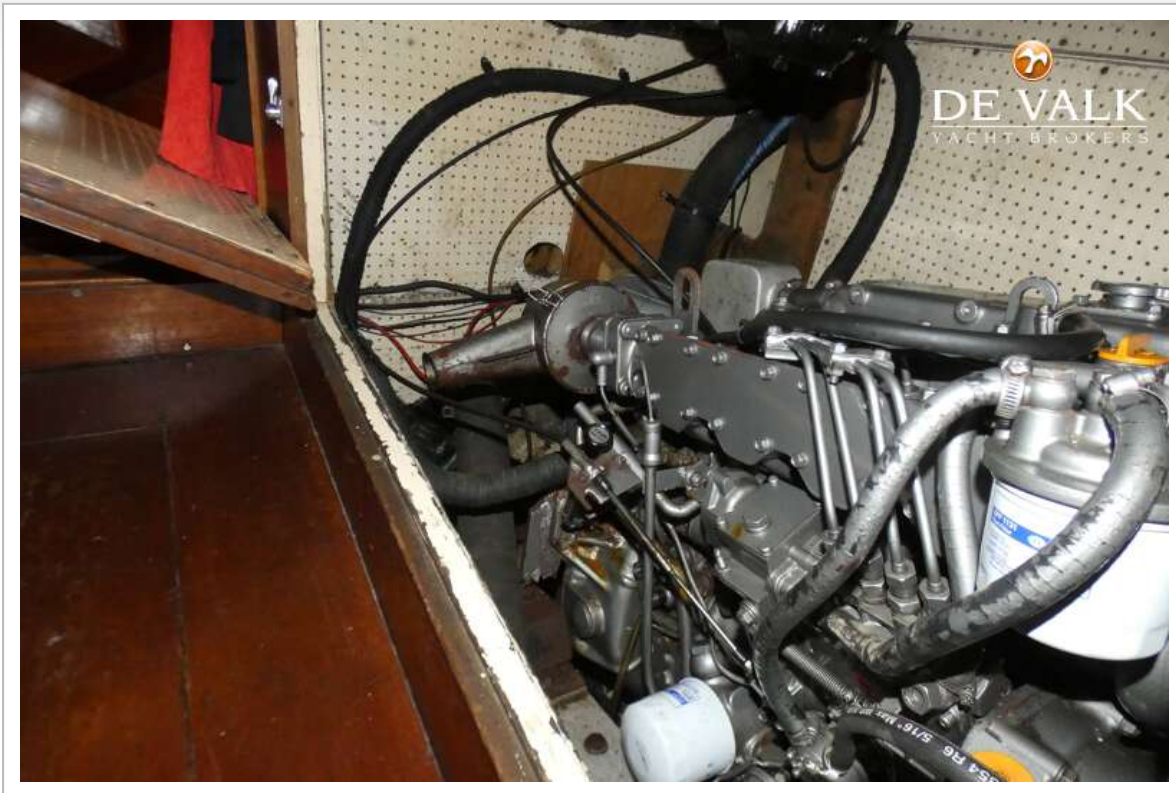




# BOWMAN 46



## BOWMAN 46





## BOWMAN 46

