



DE VALK

YACHT BROKERS

MOODY 38



DE VALK
YACHT BROKERS

BROKERAGE | CHARTER | BERTHS | FINANCE | INSURANCE | YACHT MANAGEMENT

BROKER'S COMMENTS

Through the years the Moody 38 S is appreciated for her timeless modern design as most charming lady at sea. This one is in more than acceptable used condition, benefits low engine hours and therefore indicates low general usage. Well maintained and beautiful new Flexi teak in the cockpit. She comes with a super neat interior, good layout and general condition. Almost all equipment and instruments work well, but, if you fancy the latest gear, consider partly replacement for electronics. As a result this Moody is attractively priced, but no mistakes, in present condition you can sail tomorrow.

Willem Koopmans

SPECIFICATIONS

Dimensions	11.40 x 3.86 x 1.75 (m)	Builder	Marine Projects
Built	1996	Cabins	3
Material	GRP	Berths	6
Engine(s)	1 x Volvo Penta MD40 diesel	Hp/Kw	39.00 (hp), 28.70 (kw)
Asking price	€ 79.500 (VAT Paid)	Lying	contact sales office

CONTACT

Sales office	De Valk Costa Blanca	Telephone	+34 96 50 21 569
Address	Costa Blanca Region 03730 Javea Alicante ES	E-mail	costablanca@devalk.nl

DISCLAIMER

These particulars are given in good faith as supplied but cannot be guaranteed.



GENERAL

Model	MOODY 38
Type	sailing yacht
LOA (m)	11,40
LWL (m)	9,60
Beam (m)	3,86
Draft (m)	1,75
Headroom (m)	1,90
Year built	1996
Launched	1998
Builder	Marine Projects
Country	United Kingdom
Designer	Bill Dixon
Displacement (t)	8165
Ballast (tonnes)	lead 3107
CE norm	NA
Hull material	GRP
Hull colour	off-white
Hull shape	round-bilged
Keel type	fin keel
Superstructure material	GRP
Rubbing strake	yes
Deck material	GRP
Deck finish	non-skid moulded in
Superstructure deck finish	non-skid moulded in
Cockpit deck finish	synthetic teak Flexa teak 2 years old
Antifouling (year)	2025
Window frame	aluminium
Window material	polycarbonate
Deckhatch	yes
Fuel tank (litre)	aluminium 225



Level indicator (fuel tank)	yes
Freshwater tank (litre)	aluminium 360, 2x 180, installed under seating part in salon
Level indicator (freshwater)	yes
Wheel steering	cable steering
Emergency tiller	yes
More info on hull	GRP looks solid and in very good condition

ACCOMMODATION

Cabins	3
Berths	6
Interior	teak
Layout	Owner in front, 2x guest cabins aft
Floor	teak and holly
Open cockpit	yes
Saloon	yes
Headroom saloon (m)	1,90
Chart table	yes
Aft Cabin	Double, both with double bed
Dinette	Foldable
Opening door to cockpit	yes
Galley	yes
Countertop	Duropol Small crack in surface
Sink	stainless steel Double
Cooker	2 burner
Oven	yes
Fridge	yes
Owners cabin	double bed
Bed length (m)	2
Wardrobe	hanging and shelves
Bathroom	en suite
Toilet	en suite Jabsco



Toilet system	manual
Wash basin	in the bathroom
Shower	en suite
Guest cabin 1	double bed
Bed length (m)	2
Wardrobe	yes
Bathroom	shared
Toilet	shared Jabsco
Toilet system	manual
Wash basin	in the bathroom
Shower	shared
Guest cabin 2	double bed
Bed length (m)	2
Wardrobe	yes
Bathroom	shared
Toilet	shared Jabsco
Toilet system	manual
Wash basin	in the bathroom
Shower	shared

MACHINERY

No of engines	1
Make	Volvo Penta
Type	MD40
HP	39
kW	28.70
Fuel	diesel
Year installed	1996
Maximum speed (kn)	8
Cruising speed (kn)	6,5
Consumption (l/hr)	2,5



Range (nm)	550
Engine hours	Ca 1800
Drive	sail-drive
Saildrive seal	Reconditioned 2018
Engine controls	bowden cable
Propeller type	fixed
Manual bilge pump	yes
Electric bilge pump	yes
Electrical installation	12/228
Batteries	Varta closed cell, new 2022
Start battery	Varta closed cell 105Ah, new 2022
Service battery	Varta closed cell 3 x 105Ah, new 2022
Battery charger	yes
Shorepower	with cable

NAVIGATION

Compass	Whitlock
Electric compass	On autopilot
Multi control display	Autohelm ST50, Tridata inside
Depth sounder	Autohelm ST50
Log	Autohelm ST50
Windset	Autohelm ST50
VHF	Icom M501 EURO with DSC controller DS-100
Autopilot	Autohelm ST5000, plus extra Raymarine controller inside
Rudder angle indicator	On autopilot
Radar	Raytheon Pathfinder SL70, monochrome; old but works
GPS	Furuno
Navtex	ICS Nav 4 paper
Extra info	NavCom is old but functional

EQUIPMENT



Sprayhood	2016
Bimini	yes
Cockpit cushions	yes
Cockpit table	yes
Bathing platform	yes
Boarding ladder	stainless steel
Deck shower	yes
Anchor	yes
Anchor chain	50 mtr
Anchor 2	Spare on deck
Windlass	electrical Horizon 1500
Dinghy	O2 Lite, new 2018, hardly used
Outboard	Yamaha Malta
Outboard support	yes
Sea railing	yes
Life raft	Seago RAFT-GX, expires April 2024
Life raft (pers)	6
Last life raft survey	Recent
Radar reflector	yes
Fenders	yes
Mooring lines	yes
Radio-cd player	Kenwood MP3, bluetooth
Speakers in salon	yes
Clock - barometer	yes
Fire extinguisher	Both need date check
Extinguisher in engine room	Needs check

RIGGING

Rigging	sloop
Standing rigging	Rod Checked yearly
Material mast	aluminium



Spreaders	2X
Mainsail cover	yes
Fully battened mainsail	Solo Sails, new 2015
Genoa	12 years old, but in good condition
Genoa furler	yes
Stormjib	Never used by present owner
Boomvang	gasspring
Primary sheet winch	2x Lewmar 40 ST
Genoa sheetwinches	2x Lewmar 48 ST
Extra info	Genoa is yearly checked and serviced (washed) by sailmaker



MOODY 38





MOODY 38



MOODY 38

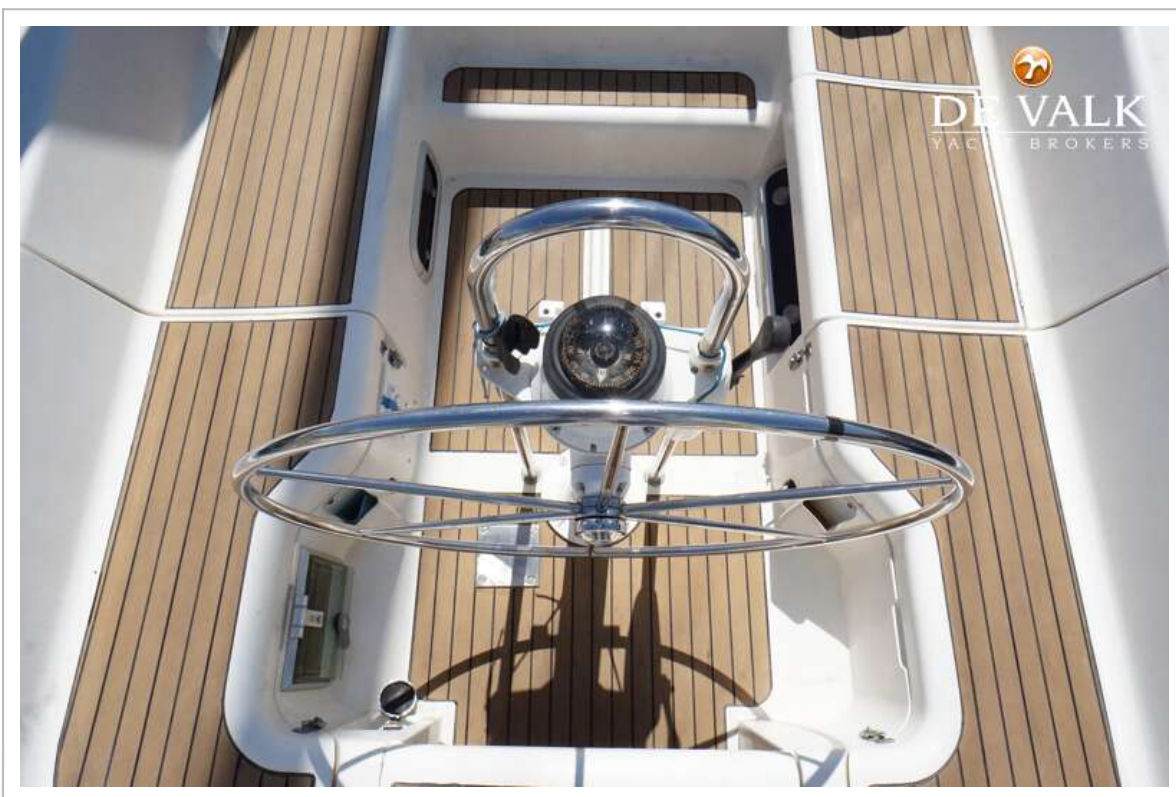
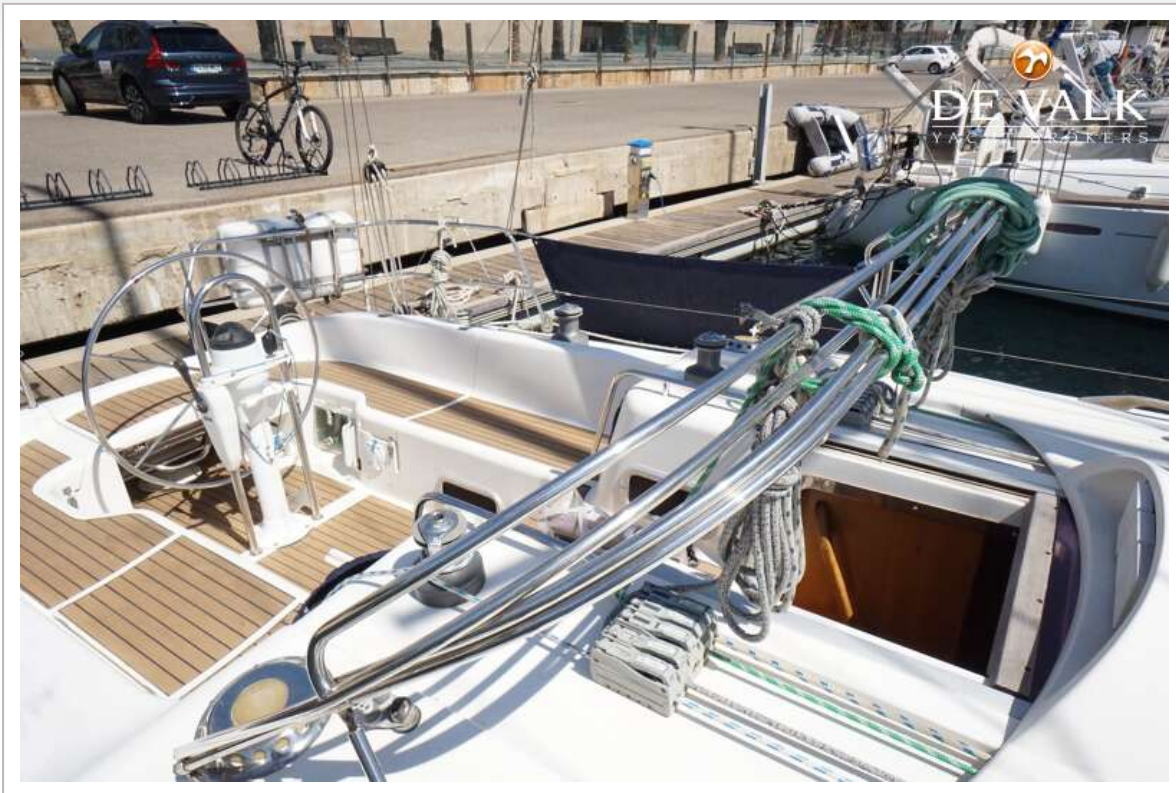




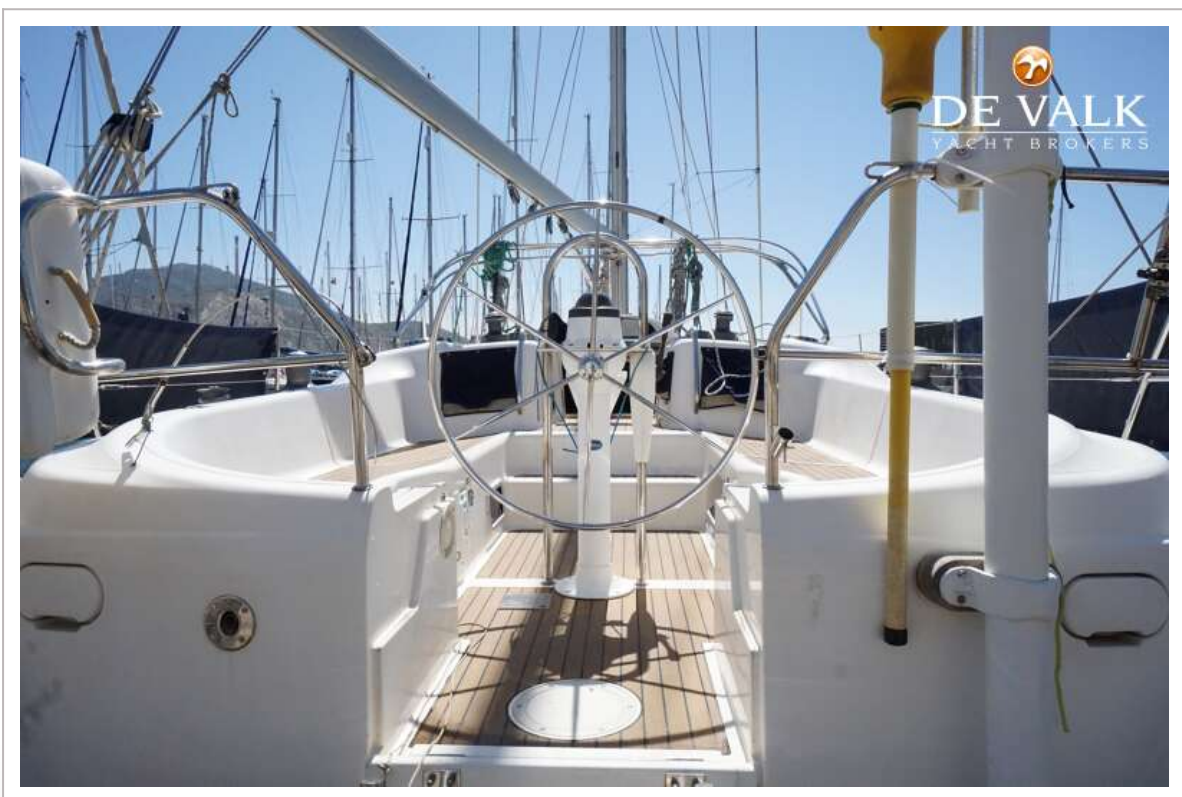
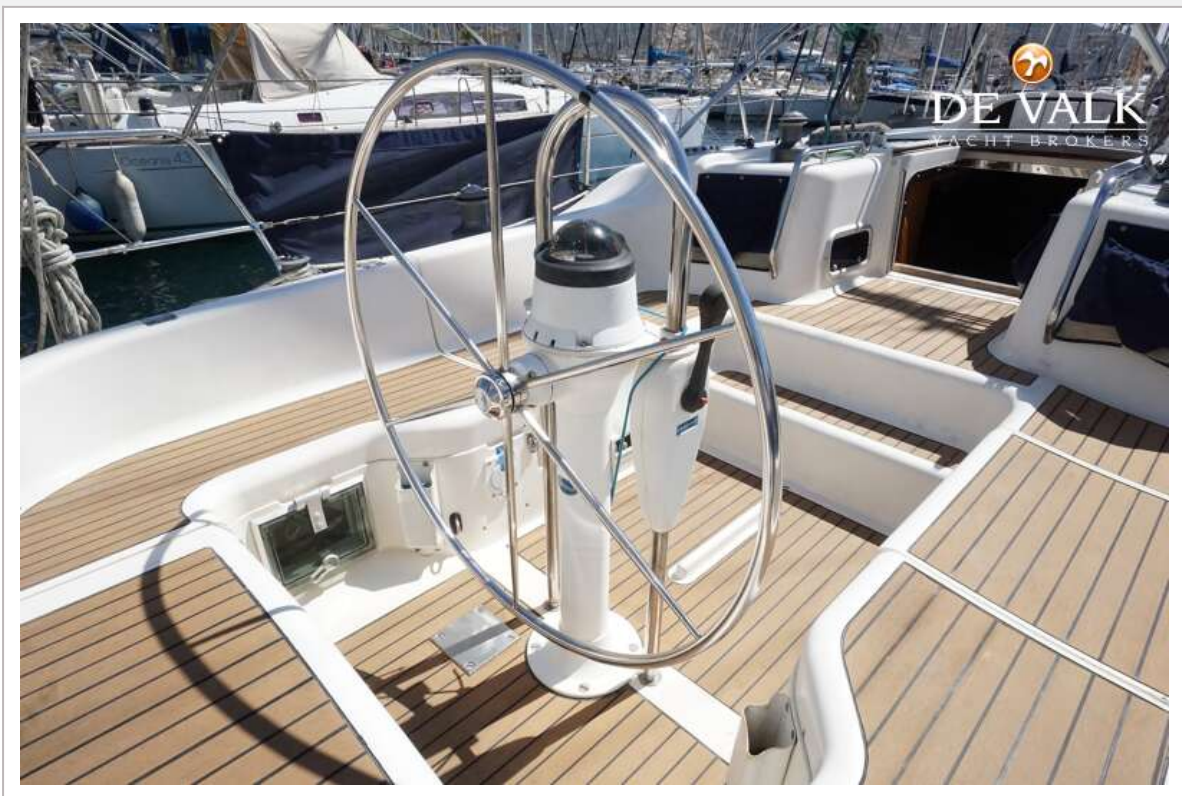
MOODY 38



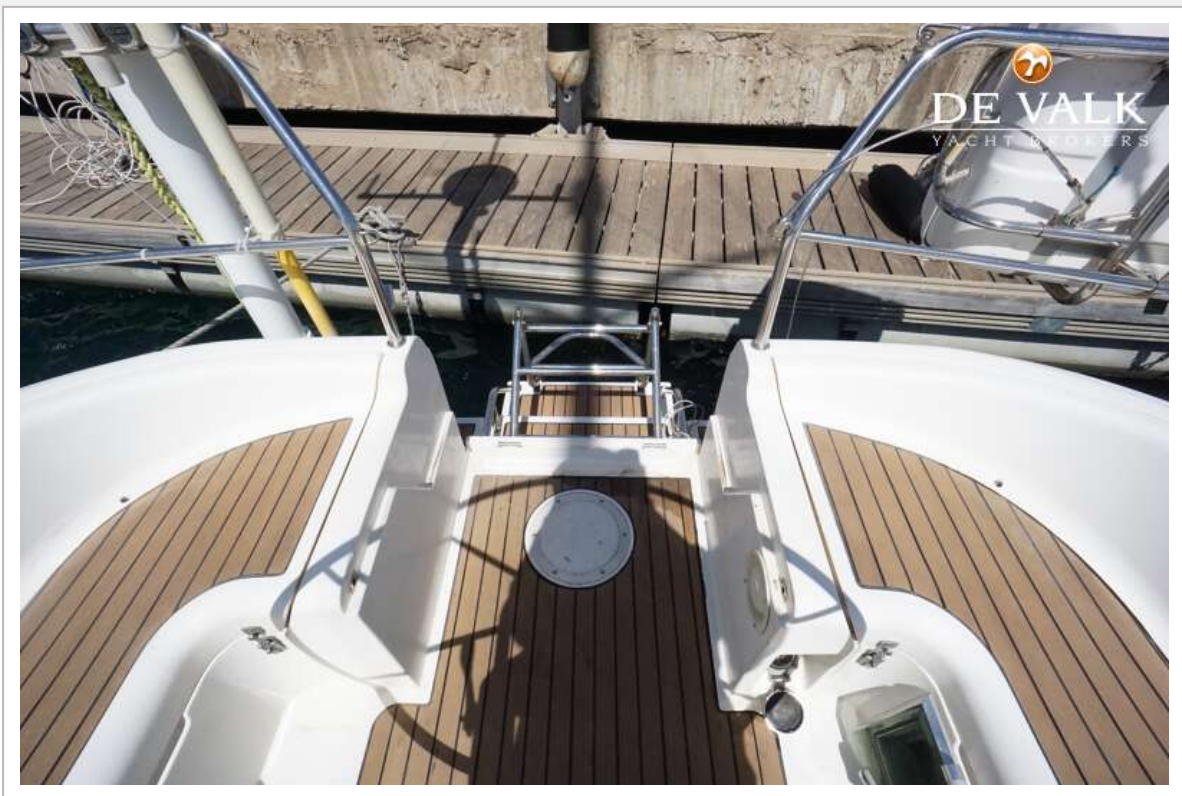
MOODY 38



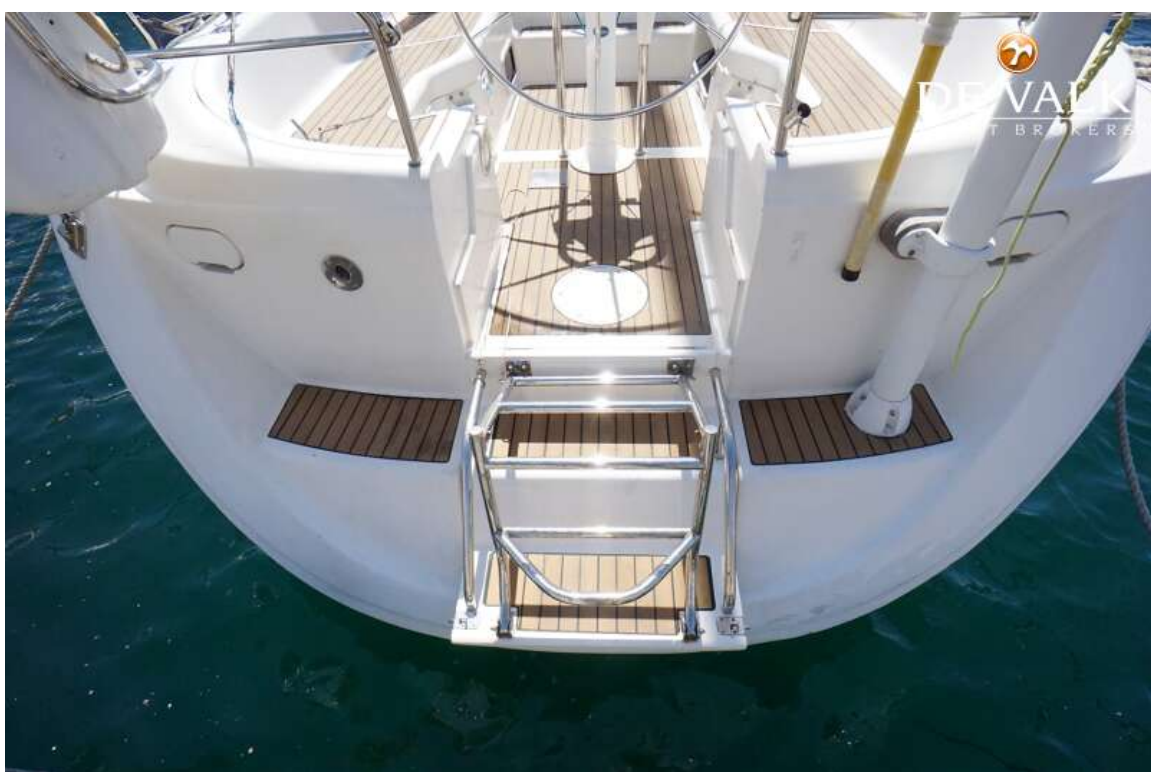
MOODY 38



MOODY 38



MOODY 38



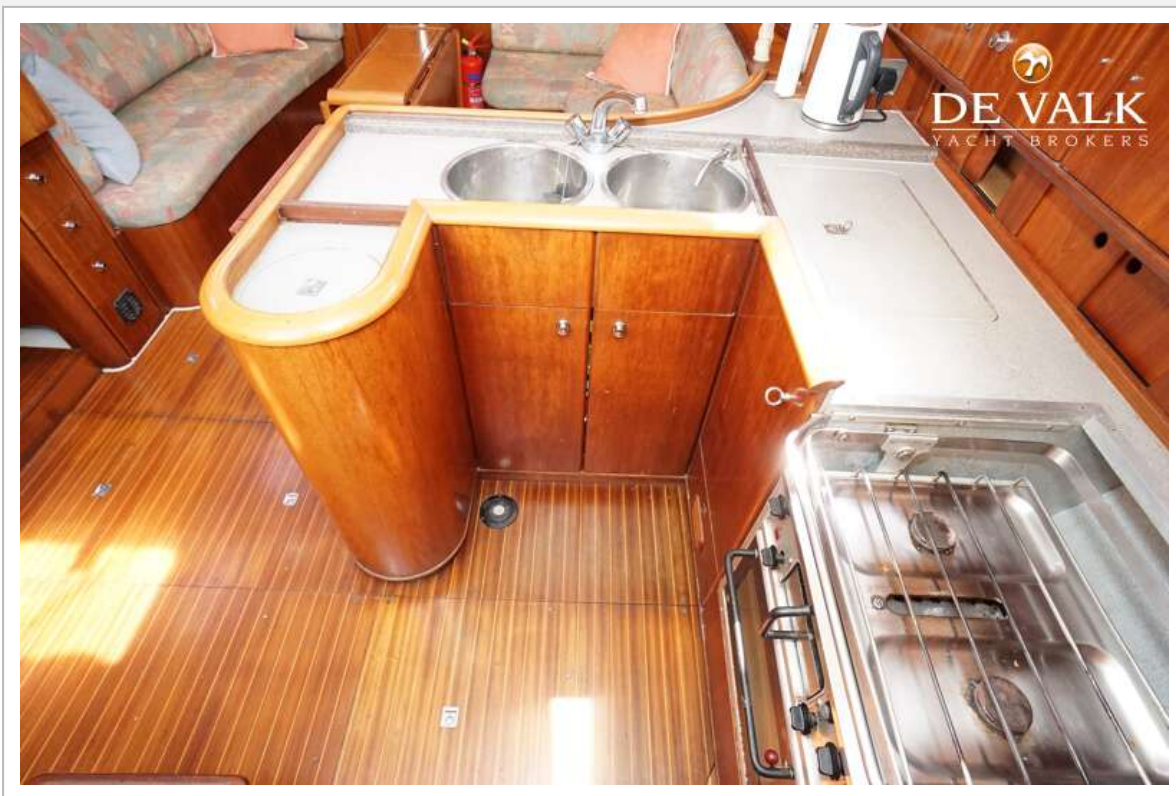
MOODY 38



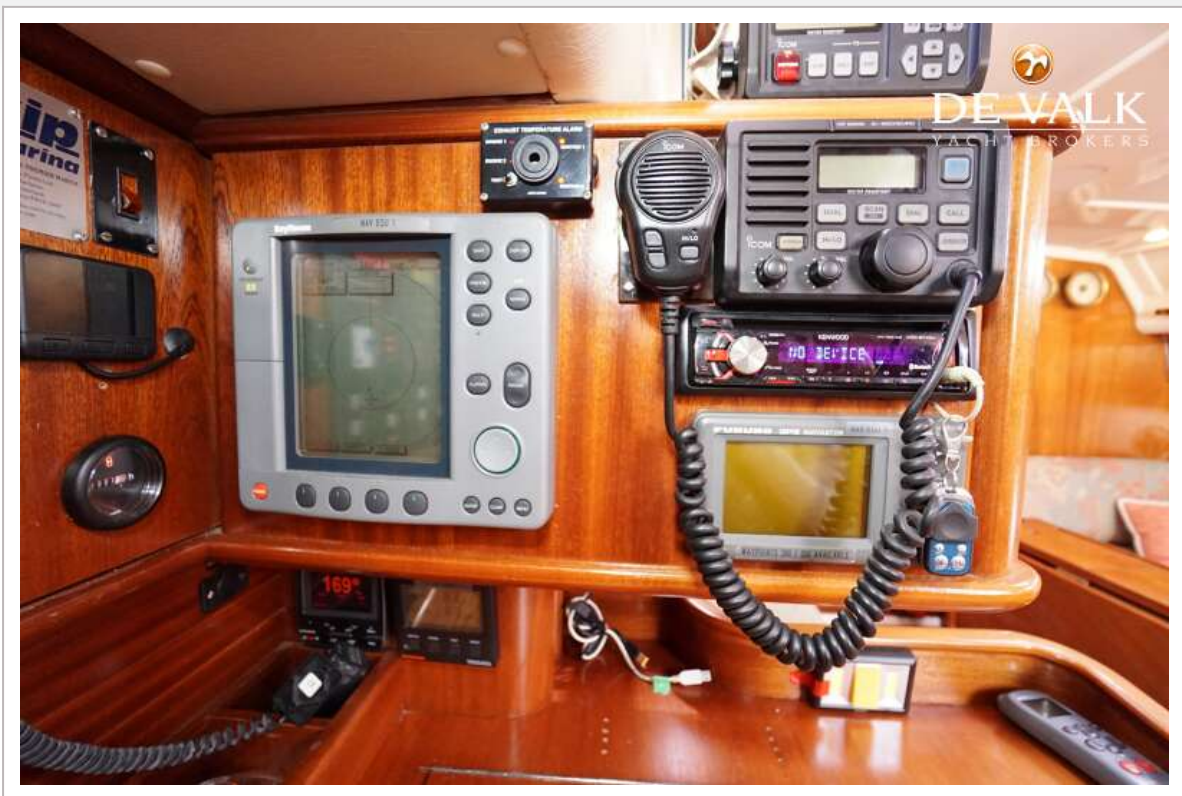
MOODY 38



MOODY 38



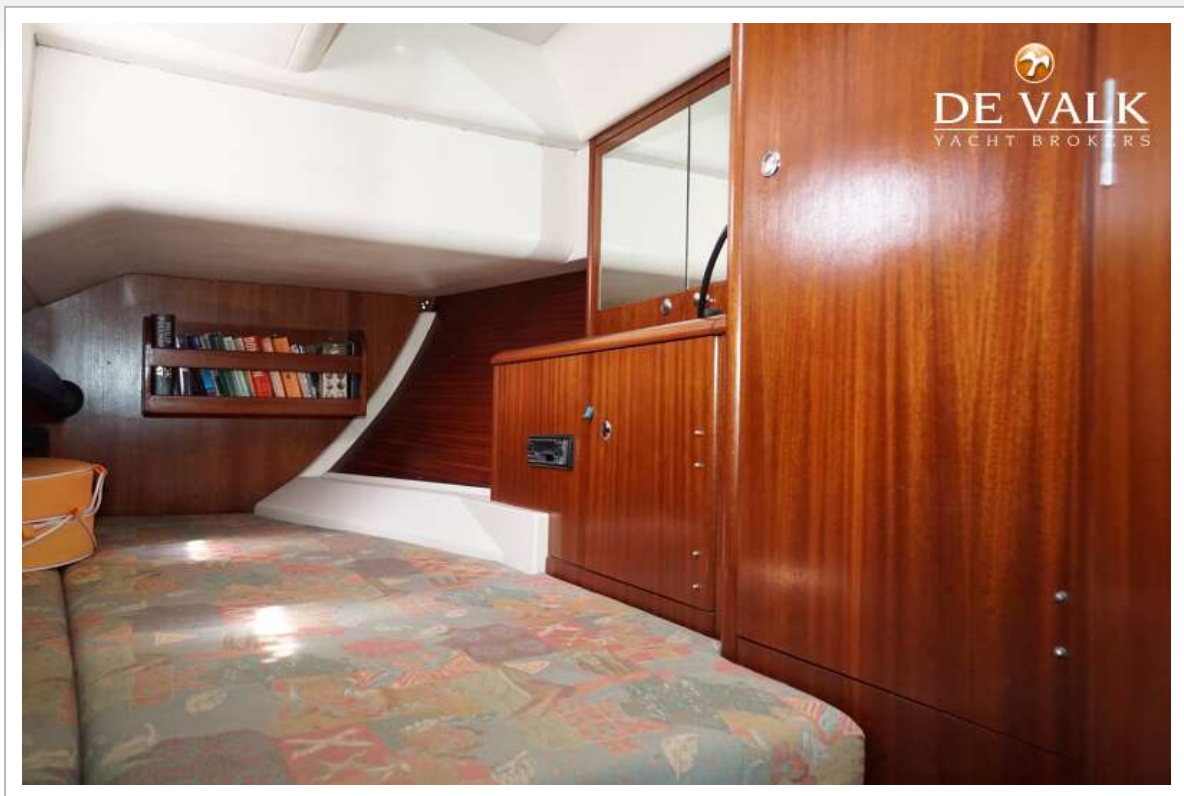
MOODY 38



MOODY 38







MOODY 38



