



DE VALK

YACHT BROKERS



MOODY 38



DE VALK  
YACHT BROKERS

## BROKER'S COMMENTS

Through the years the Moody 38 S is appreciated for her timeless modern design as most charming lady at sea. This one is in more than acceptable used condition, benefits low engine hours and therefore indicates low general usage. Well maintained and beautiful new Flexi teak in the cockpit. She comes with a super neat interior, good layout and general condition. Almost all equipment and instruments work well, but, if you fancy the latest gear, consider partly replacement for electronics. As a result this Moody is attractively priced, but no mistakes, in present condition you can sail tomorrow.

*Willem Koopmans*

## SPECIFICATIONS

<b>Dimensions</b>	11.40 x 3.86 x 1.75 (m)	<b>Builder</b>	Marine Projects
<b>Built</b>	1996	<b>Cabins</b>	3
<b>Material</b>	GRP	<b>Berths</b>	6
<b>Engine(s)</b>	1 x Volvo Penta MD40 diesel	<b>Hp/Kw</b>	39.00 (hp), 28.70 (kw)
<b>Asking price</b>	€ 79.500 (VAT Paid)	<b>Lying</b>	contact sales office

## CONTACT

<b>Sales office</b>	De Valk Costa Blanca	<b>Telephone</b>	+34 96 50 21 569
<b>Address</b>	Costa Blanca Region 03730 Javea Alicante ES	<b>E-mail</b>	costablanca@devalk.nl

## DISCLAIMER

These particulars are given in good faith as supplied but cannot be guaranteed.



## GENERAL

<b>Model</b>	MOODY 38
<b>Type</b>	sailing yacht
<b>LOA (m)</b>	11,40
<b>LWL (m)</b>	9,60
<b>Beam (m)</b>	3,86
<b>Draft (m)</b>	1,75
<b>Headroom (m)</b>	1,90
<b>Year built</b>	1996
<b>Launched</b>	1998
<b>Builder</b>	Marine Projects
<b>Country</b>	United Kingdom
<b>Designer</b>	Bill Dixon
<b>Displacement (t)</b>	8165
<b>Ballast (tonnes)</b>	lead 3107
<b>CE norm</b>	NA
<b>Hull material</b>	GRP
<b>Hull colour</b>	off-white
<b>Hull shape</b>	round-bilged
<b>Keel type</b>	fin keel
<b>Superstructure material</b>	GRP
<b>Rubbing strake</b>	yes
<b>Deck material</b>	GRP
<b>Deck finish</b>	non-skid moulded in
<b>Superstructure deck finish</b>	non-skid moulded in
<b>Cockpit deck finish</b>	synthetic teak Flexa teak 2 years old
<b>Antifouling (year)</b>	2025
<b>Window frame</b>	aluminium
<b>Window material</b>	polycarbonate
<b>Deckhatch</b>	yes
<b>Fuel tank (litre)</b>	aluminium 225



Level indicator (fuel tank)	yes
Freshwater tank (litre)	aluminium 360, 2x 180, installed under seating part in salon
Level indicator (freshwater)	yes
Wheel steering	cable steering
Emergency tiller	yes
More info on hull	GRP looks solid and in very good condition

## ACCOMMODATION

Cabins	3
Berths	6
Interior	teak
Layout	Owner in front, 2x guest cabins aft
Floor	teak and holly
Open cockpit	yes
Saloon	yes
Headroom saloon (m)	1,90
Chart table	yes
Aft Cabin	Double, both with double bed
Dinette	Foldable
Opening door to cockpit	yes
Galley	yes
Countertop	Duropol Small crack in surface
Sink	stainless steel Double
Cooker	2 burner
Oven	yes
Fridge	yes
Owners cabin	double bed
Bed length (m)	2
Wardrobe	hanging and shelves
Bathroom	en suite
Toilet	en suite Jabsco



<b>Toilet system</b>	manual
<b>Wash basin</b>	in the bathroom
<b>Shower</b>	en suite
<b>Guest cabin 1</b>	double bed
<b>Bed length (m)</b>	2
<b>Wardrobe</b>	yes
<b>Bathroom</b>	shared
<b>Toilet</b>	shared Jabsco
<b>Toilet system</b>	manual
<b>Wash basin</b>	in the bathroom
<b>Shower</b>	shared
<b>Guest cabin 2</b>	double bed
<b>Bed length (m)</b>	2
<b>Wardrobe</b>	yes
<b>Bathroom</b>	shared
<b>Toilet</b>	shared Jabsco
<b>Toilet system</b>	manual
<b>Wash basin</b>	in the bathroom
<b>Shower</b>	shared

## MACHINERY

<b>No of engines</b>	1
<b>Make</b>	Volvo Penta
<b>Type</b>	MD40
<b>HP</b>	39
<b>kW</b>	28.70
<b>Fuel</b>	diesel
<b>Year installed</b>	1996
<b>Maximum speed (kn)</b>	8
<b>Cruising speed (kn)</b>	6,5
<b>Consumption (l/hr)</b>	2,5



<b>Range (nm)</b>	550
<b>Engine hours</b>	Ca 1800
<b>Drive</b>	sail-drive
<b>Saildrive seal</b>	Reconditioned 2018
<b>Engine controls</b>	bowden cable
<b>Propeller type</b>	fixed
<b>Manual bilge pump</b>	yes
<b>Electric bilge pump</b>	yes
<b>Electrical installation</b>	12/228
<b>Batteries</b>	Varta closed cell, new 2022
<b>Start battery</b>	Varta closed cell 105Ah, new 2022
<b>Service battery</b>	Varta closed cell 3 x 105Ah, new 2022
<b>Battery charger</b>	yes
<b>Shorepower</b>	with cable

## NAVIGATION

<b>Compass</b>	Whitlock
<b>Electric compass</b>	On autopilot
<b>Multi control display</b>	Autohelm ST50, Tridata inside
<b>Depth sounder</b>	Autohelm ST50
<b>Log</b>	Autohelm ST50
<b>Windset</b>	Autohelm ST50
<b>VHF</b>	Icom M501 EURO with DSC controller DS-100
<b>Autopilot</b>	Autohelm ST5000, plus extra Raymarine controller inside
<b>Rudder angle indicator</b>	On autopilot
<b>Radar</b>	Raytheon Pathfinder SL70, monochrome; old but works
<b>GPS</b>	Furuno
<b>Navtex</b>	ICS Nav 4 paper
<b>Extra info</b>	NavCom is old but functional

## EQUIPMENT



Sprayhood	2016
Bimini	yes
Cockpit cushions	yes
Cockpit table	yes
Bathing platform	yes
Boarding ladder	stainless steel
Deck shower	yes
Anchor	yes
Anchor chain	50 mtr
Anchor 2	Spare on deck
Windlass	electrical Horizon 1500
Dinghy	O2 Lite, new 2018, hardly used
Outboard	Yamaha Malta
Outboard support	yes
Sea railing	yes
Life raft	Seago RAFT-GX, expires April 2024
Life raft (pers)	6
Last life raft survey	Recent
Radar reflector	yes
Fenders	yes
Mooring lines	yes
Radio-cd player	Kenwood MP3, bluetooth
Speakers in salon	yes
Clock - barometer	yes
Fire extinguisher	Both need date check
Extinguisher in engine room	Needs check

## RIGGING

Rigging	sloop
Standing rigging	Rod
Material mast	aluminium



<b>Spreaders</b>	2X
<b>Mainsail cover</b>	yes
<b>Fully battened mainsail</b>	Solo Sails, new 2015
<b>Genoa</b>	12 years old, but in good condition
<b>Genoa furler</b>	yes
<b>Stormjib</b>	Never used by present owner
<b>Boomvang</b>	gasspring
<b>Primary sheet winch</b>	2x Lewmar 40 ST
<b>Genoa sheetwinches</b>	2x Lewmar 48 ST
<b>Extra info</b>	Genoa is yearly checked and serviced (washed) by sailmaker





# MOODY 38



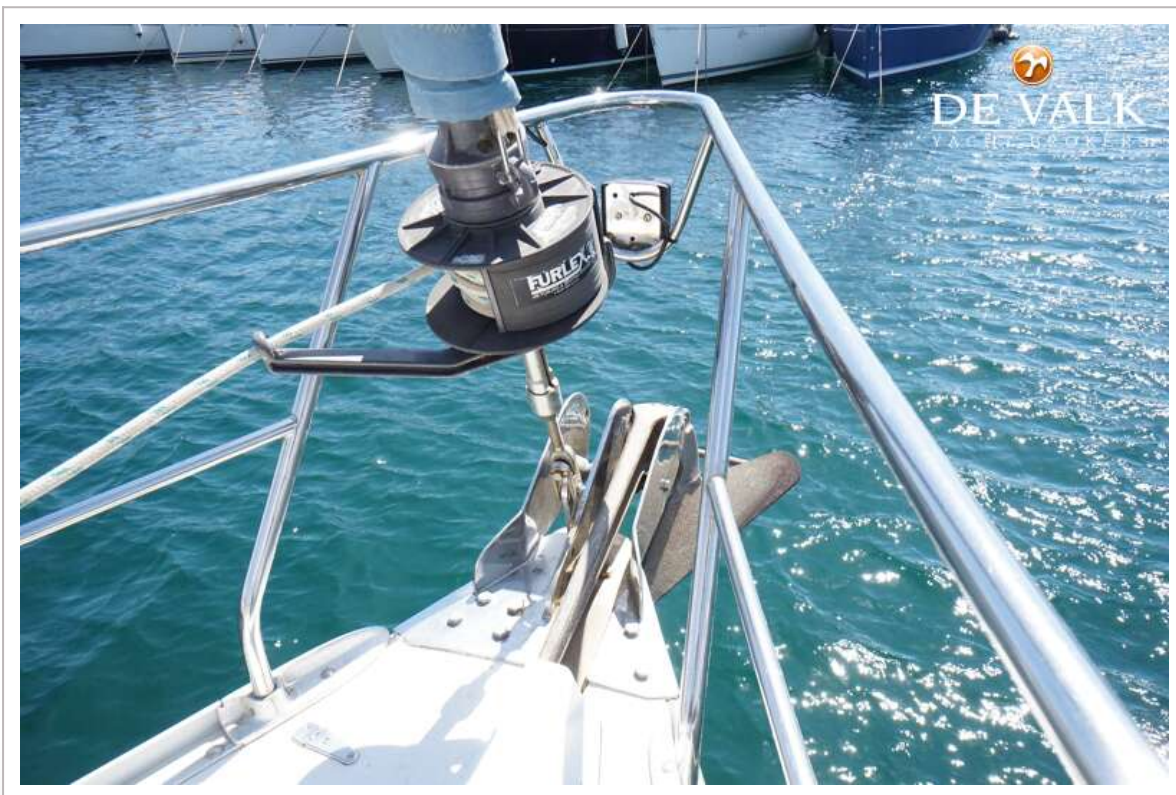


# MOODY 38





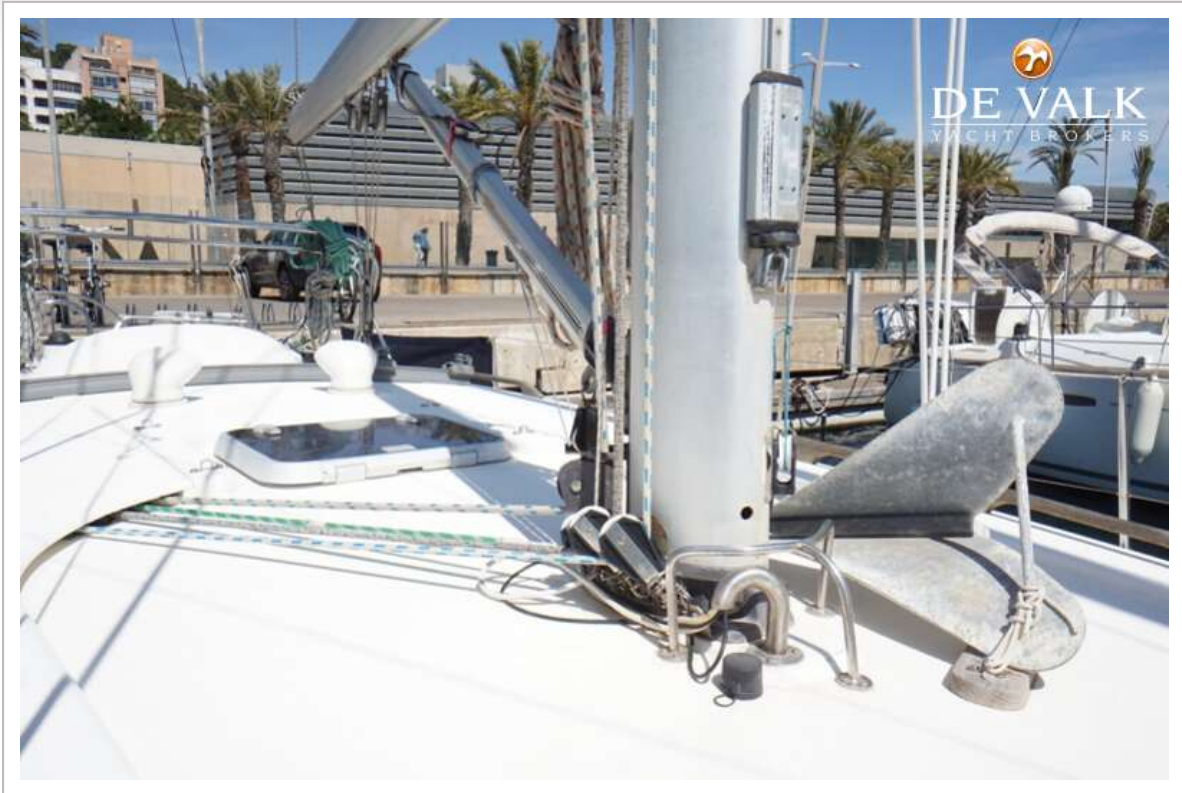
# MOODY 38





# MOODY 38



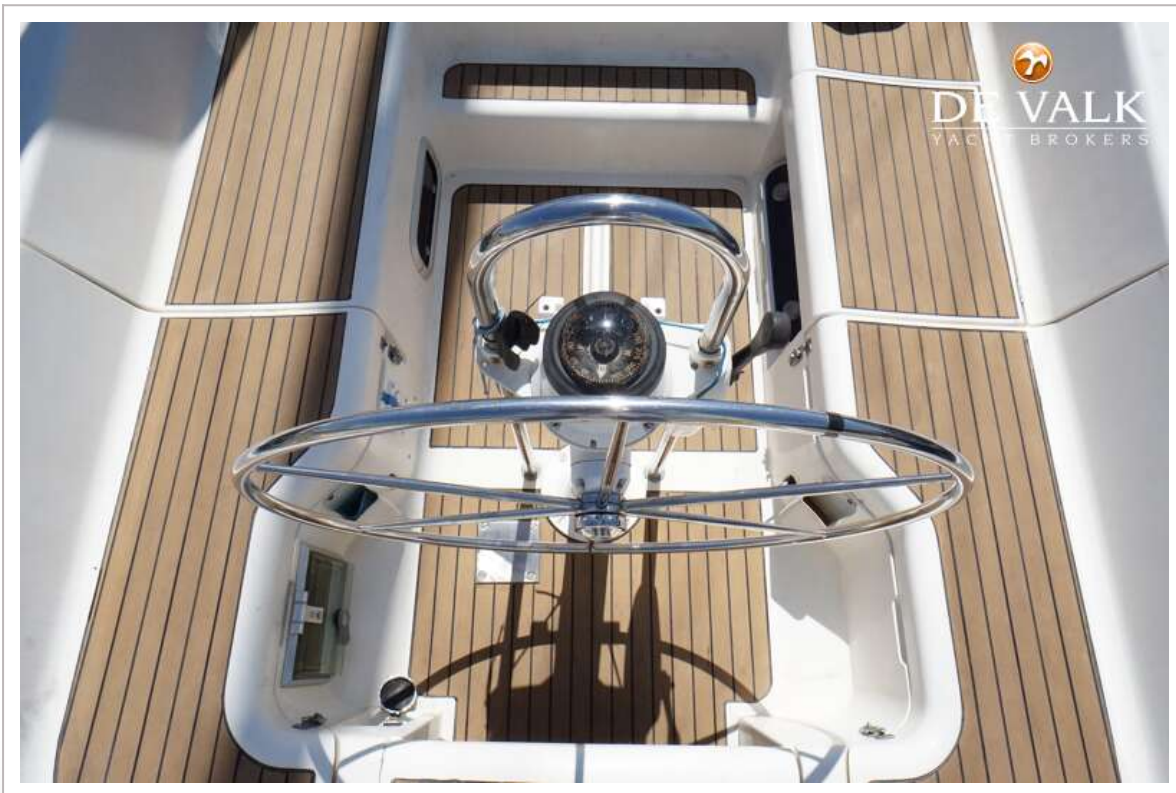
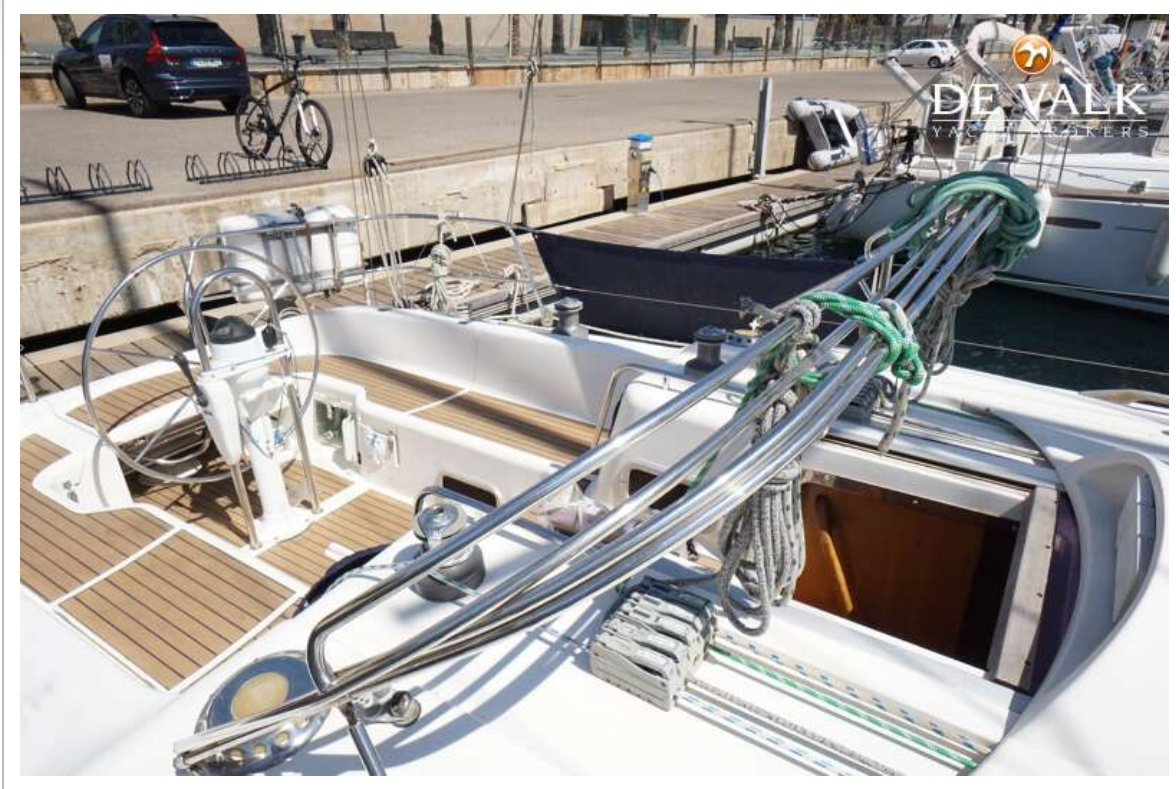




# MOODY 38

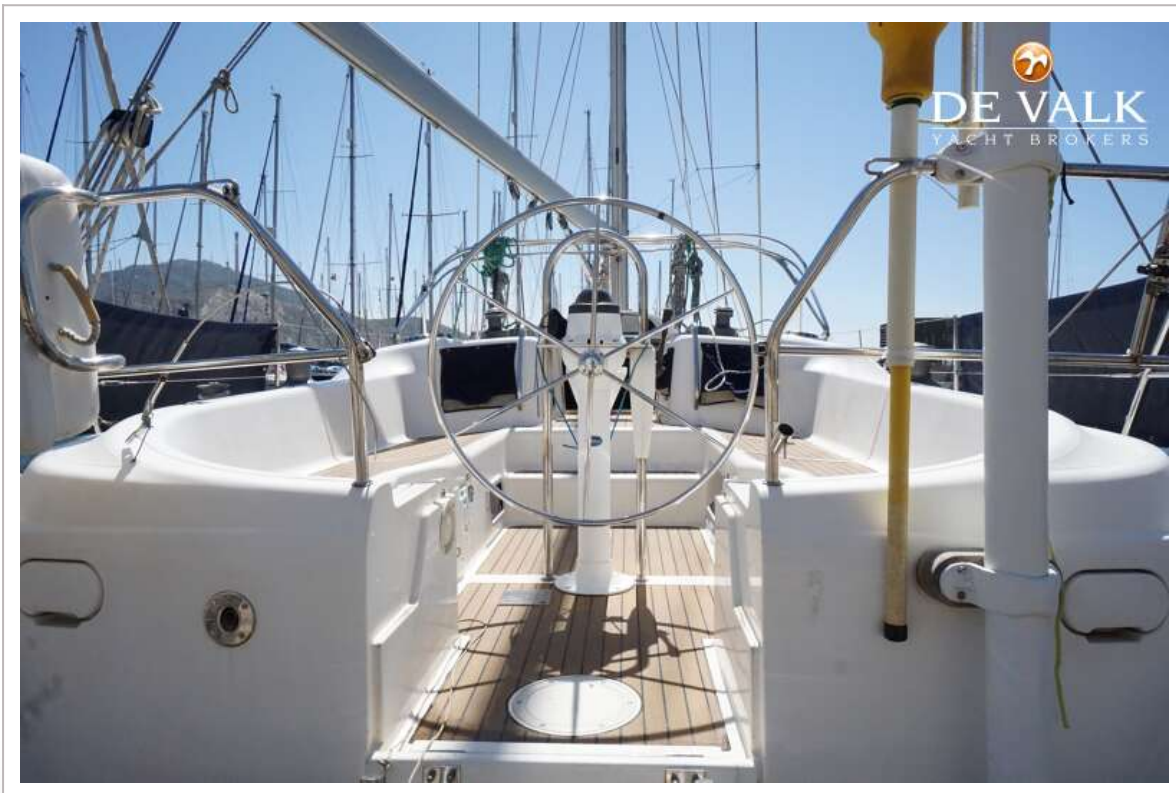


# MOODY 38



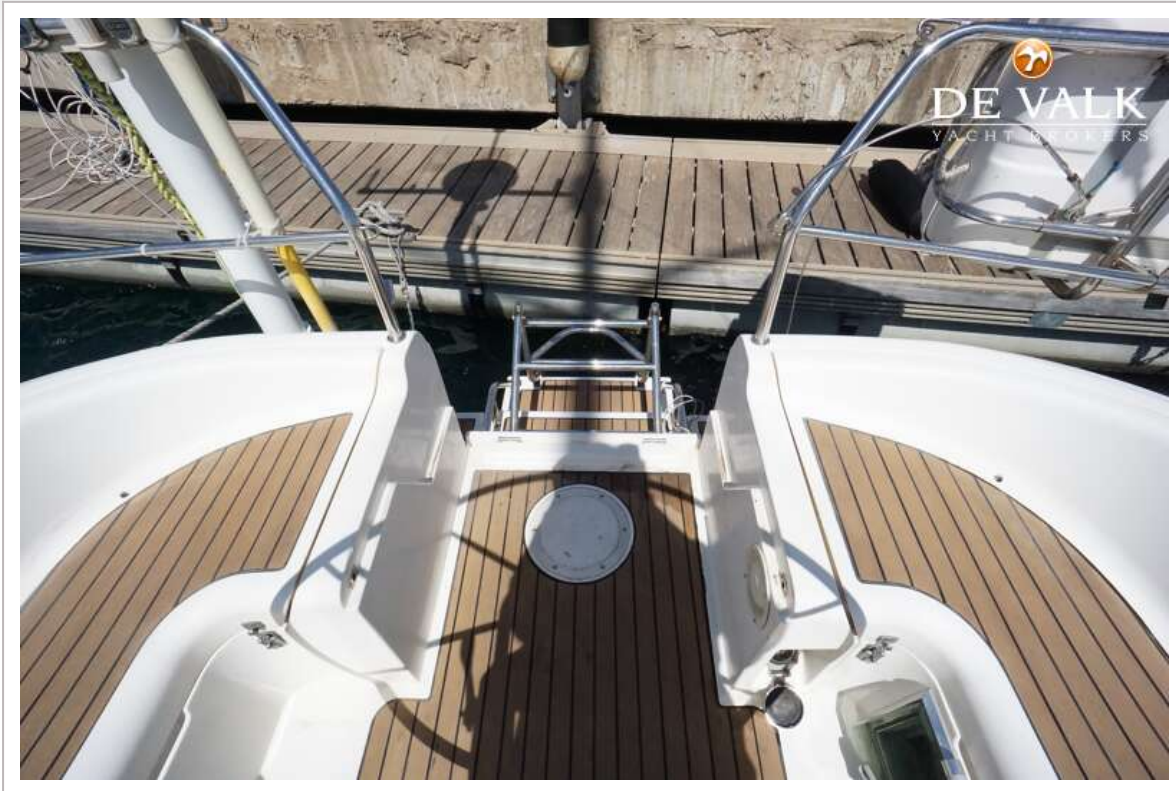


# MOODY 38

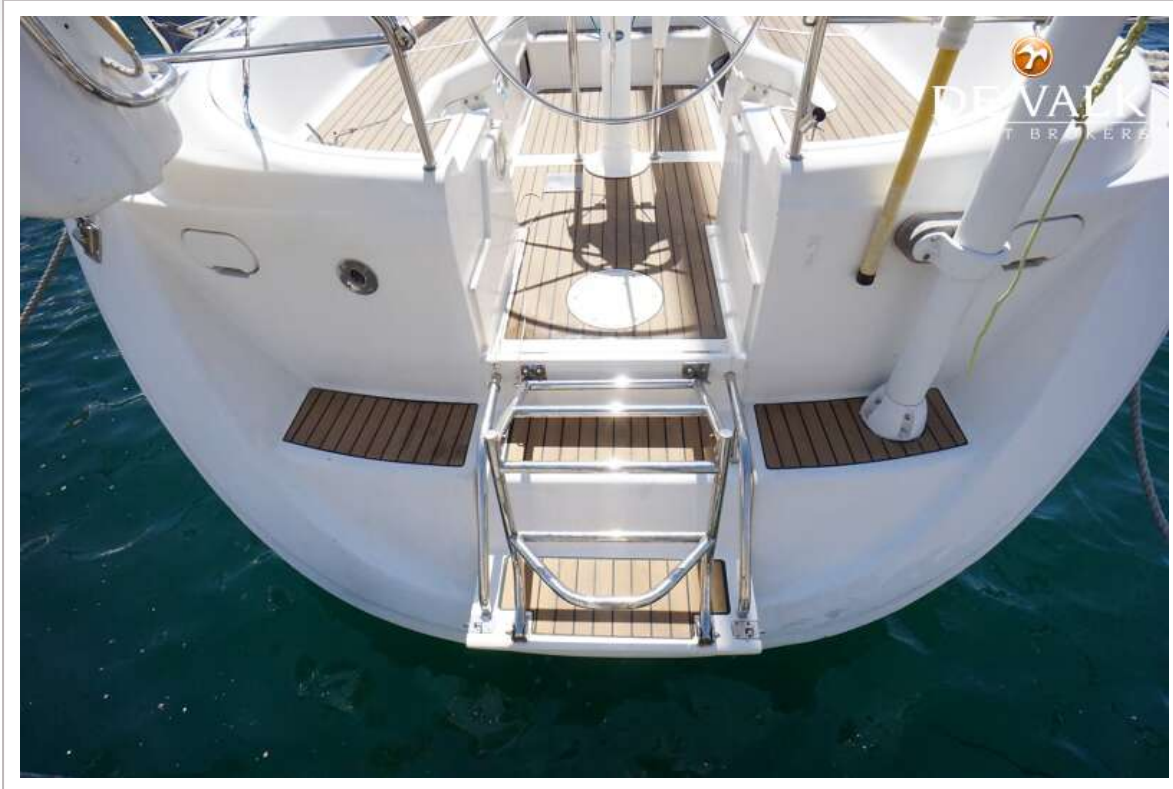




# MOODY 38



# MOODY 38





# MOODY 38

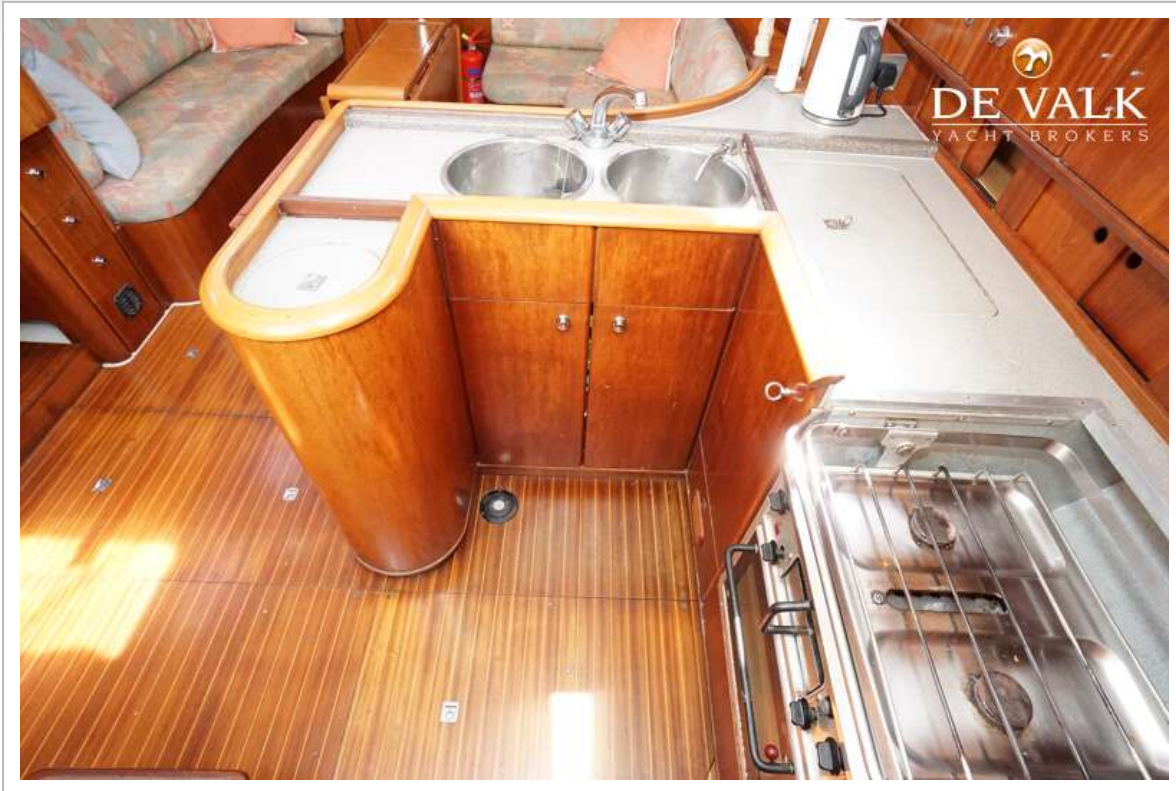


# MOODY 38





# MOODY 38



# MOODY 38





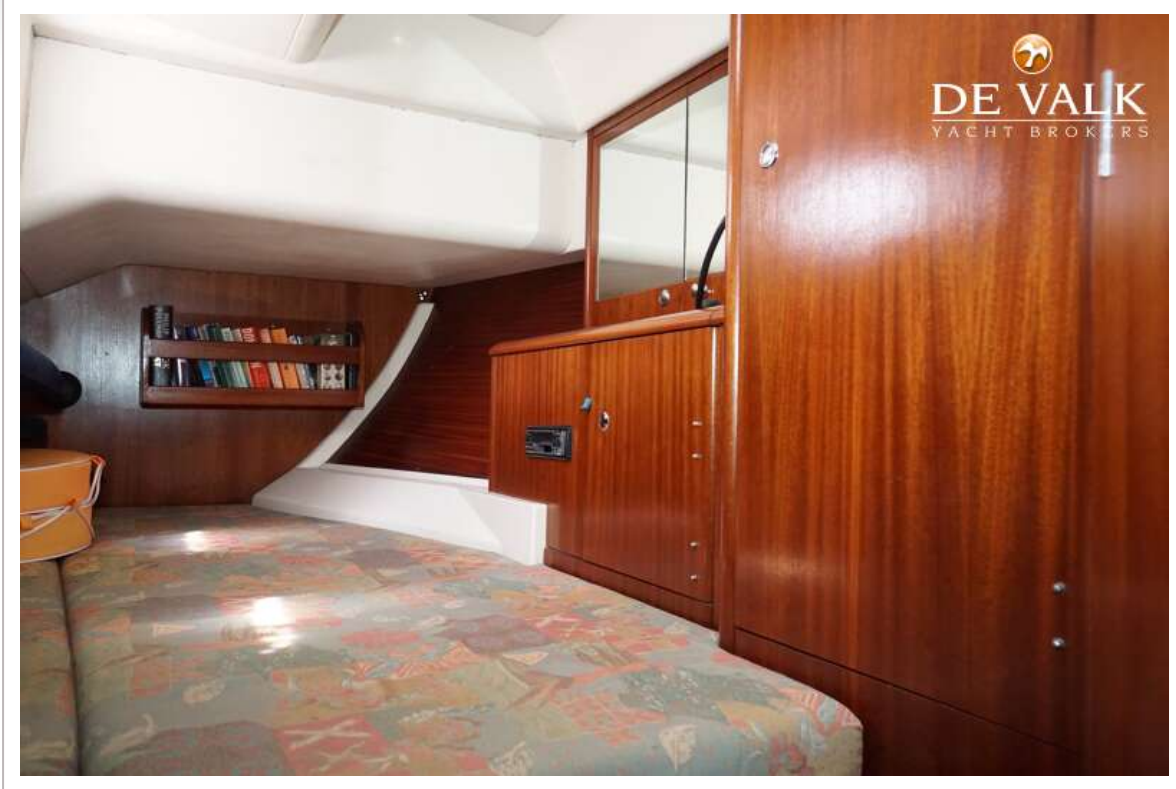
# MOODY 38







# MOODY 38



# MOODY 38



