



## MENORQUIN 120



**DE VALK**  
YACHT BROKERS

# MENORQUIN 120

## BROKER'S COMMENTS

This charming Menorquin 120 is strongly built and yet fine in detail. Menorquin boats owe their characteristic look to the traditional Menorcan fishing boats, and the 120 is a cracking example that certainly turns heads. The pleasant aft deck area leads to the pilot house, where you will find a resting area with a sofa. On the lower deck you will find the salon / dining area with an open galley area which leads into 2 cabins and bathroom with plenty of head space. New navigation equipment, engine revisions completed bottom works done this years. Ready for the season.

*Tue Simon Fasting*

## SPECIFICATIONS

<b>Dimensions</b>	11.85 x 3.90 x 1.20 (m)	<b>Builder</b>	Menorquin Yachts
<b>Built</b>	2006	<b>Cabins</b>	2
<b>Material</b>	GRP	<b>Berths</b>	6
<b>Engine(s)</b>	2 x Volvo Penta D4 diesel	<b>Hp/Kw</b>	2 x 260.00 (hp), 191.36 (kw)
<b>Asking price</b>	sold (VAT )	<b>Lying</b>	at sales office

## CONTACT

<b>Sales office</b>	De Valk Barcelona	<b>Telephone</b>	+34 932 202 825
<b>Address</b>	Barcelona region 08392 Barcelona ES	<b>E-mail</b>	barcelona@devalk.nl

## DISCLAIMER

These particulars are given in good faith as supplied but cannot be guaranteed.



# MENORQUIN 120

## GENERAL

Model	MENORQUIN 120
Type	motor yacht
LOA (m)	11,85
Beam (m)	3,90
Draft (m)	1,20
Headroom (m)	1,95
Year built	2006
Builder	Menorquin Yachts
Country	Spain
Displacement (t)	11,3
CE norm	B
Hull material	GRP
Hull colour	off-white
Deck material	GRP
Deck finish	teak Aft deck
Antifouling (year)	Titan antifouling + new anodes 2023
Fuel tank (litre)	2 X 400
Level indicator (fuel tank)	yes
Freshwater tank (litre)	600
Level indicator (freshwater)	yes

## ACCOMMODATION

Cabins	2
Berths	6
Interior	teak
Floor	teak
Dinette to convert into berth	Into double bed for 2
Galley	Lower deck
Sink	stainless steel
Oven	yes



# MENORQUIN 120

Microwave	yes
Fridge	yes
Freezer	yes
Hot water system	220V + engine
Water pressure system	electrical
Owners cabin	double bed
Wardrobe	hanging/drawers/shelves
Bathroom	shared
Guest cabin 1	twin single
Bathroom	shared

## MACHINERY

No of engines	2
Make	Volvo Penta
Type	D4
HP	260
kW	191.36
Fuel	diesel
Year installed	2006
Maximum speed (kn)	17
Cruising speed (kn)	14
Engine hours	1200
Engine cooling system	freshwater heat exchanger
Bowthruster	electric
Electric bilge pump	New 2023
Batteries	1 for gangway
Start battery	2
Service battery	2
Battery charger	yes
Shorepower	with cable 15m
Extra info	Volvo engine revision 2023



## Extra info

Official 1200H revision by Volvo Penta May 2023

## NAVIGATION

Compass	yes
Depth sounder	Stereoscopic double transducer
VHF	yes
Autopilot	With integrated GPS plotter
Radar/GPS/plotter	Raytheon
AIS receiver	yes
AIS transponder	yes
EPIRB	New 2023

## EQUIPMENT

Bimini	Aft deck
Bathing platform	Fixed
Gangway	Hydraulic revised 2023. New pipes.
Deck shower	yes
Anchor	20kg
Anchor chain	40 meter
Anchor 2	12kg
Life raft	Liferaft 6 pax. full revision 2023
Lifejackets	6
Fenders	6
Radio	yes
iPod connection	yes
Speakers in salon	2 in pilot house 2 on deck
Fire extinguisher	2
Latest extinguisher survey	2023
Extinguisher in engine room	2023
Extra info	New emergency flare kit and extra flares 2023
Extra info	New SOLAS kit 2023



Extra info

Official Spanish navigation certificate 2023



# MENORQUIN 120





# MENORQUIN 120





# MENORQUIN 120





# MENORQUIN 120



# MENORQUIN 120

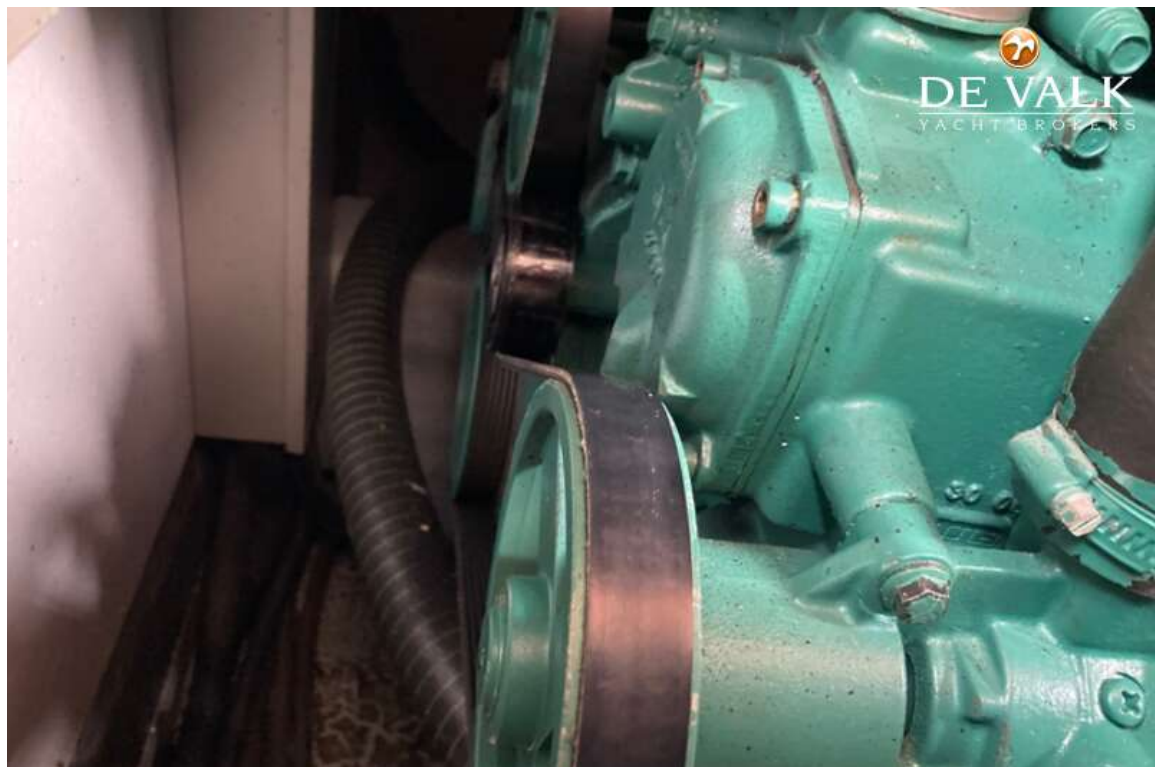




# MENORQUIN 120

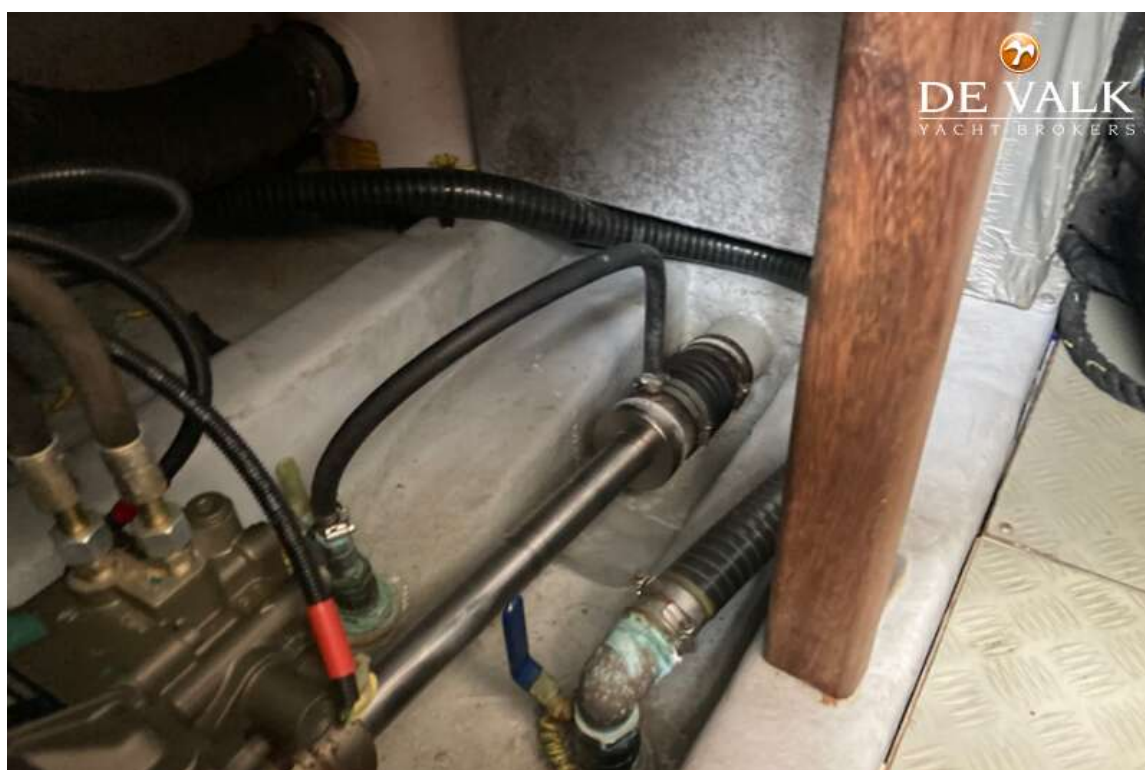


# MENORQUIN 120





# MENORQUIN 120







# MENORQUIN 120

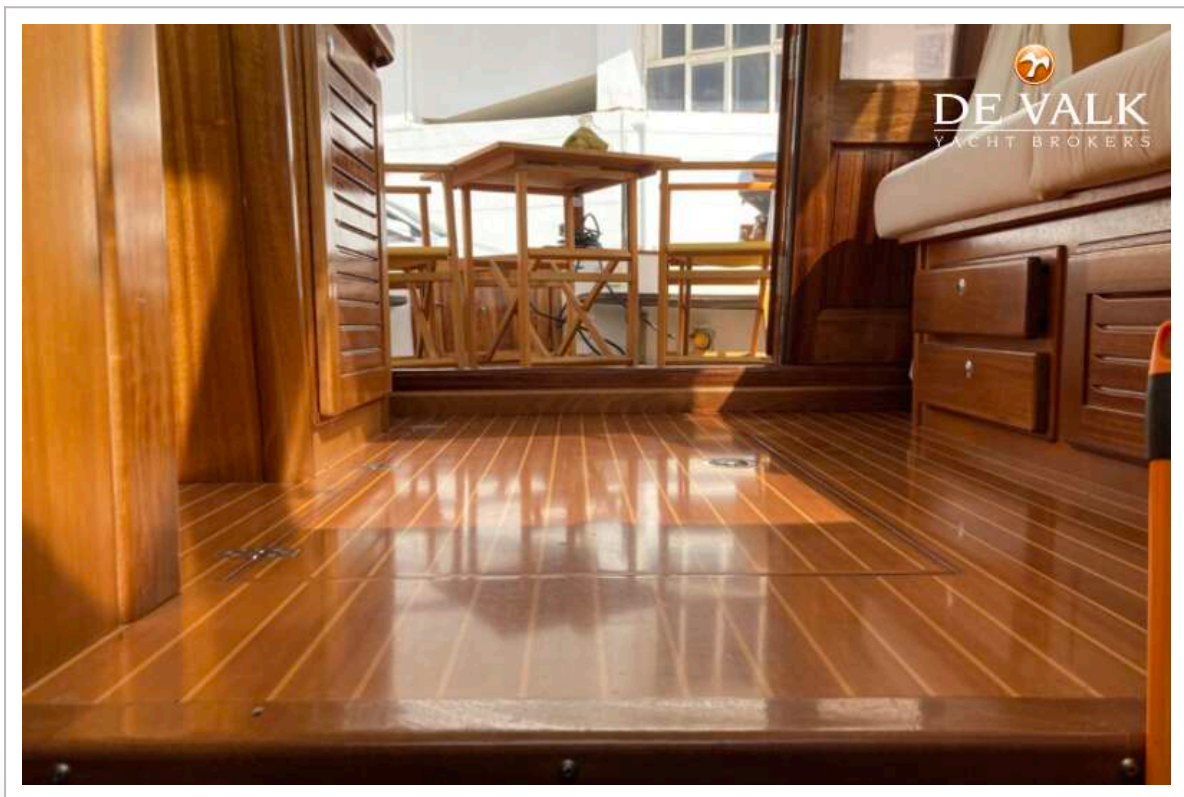


# MENORQUIN 120





# MENORQUIN 120





# MENORQUIN 120

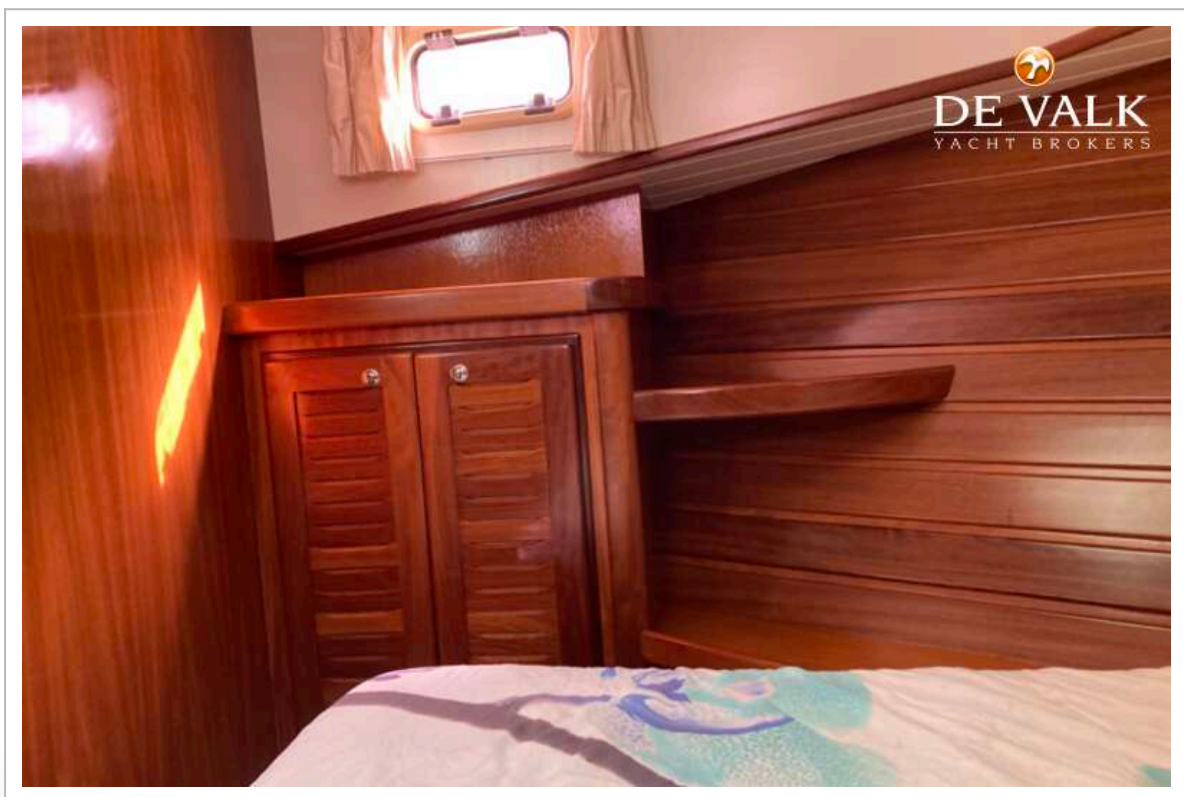


# MENORQUIN 120





# MENORQUIN 120



# MENORQUIN 120





## MENORQUIN 120





# MENORQUIN 120

