



DE VALK  
YACHT BROKERS



## SUNSEEKER MANHATTAN 62



DE VALK  
YACHT BROKERS

# SUNSEEKER MANHATTAN 62

## BROKER'S COMMENTS

A flybridge Sunseeker Manhattan 62 in exceptional condition and maintained with recent refits. She offers fantastic outside living with spacious sunlounge, large cockpit and bathing platform, perfect for Mediterranean life. Stylish interior through out, all in great condition and will make a perfect boat for trips away with the family. The equipment is extensive with i.e. kitchen with Ceramic stove, Freezer, wet bar, dishwasher, washing machine, aircon & heating, 3 cabins, 2 bathrooms, steering chair and sofa group, large lounge. Berth available to take over in the RCNP

*Jörg Hellmich*

## SPECIFICATIONS

<b>Dimensions</b>	19.60 x 4.75 x 1.60 (m)	<b>Builder</b>	Sunseeker International
<b>Built</b>	2000	<b>Cabins</b>	3
<b>Material</b>	GRP	<b>Berths</b>	6
<b>Engine(s)</b>	2 x MAN D2848LE403 diesel	<b>Hp/Kw</b>	2 x 800.00 (hp), 588.80 (kw)
<b>Asking price</b>	sold (VAT )	<b>Lying</b>	at sales office

## CONTACT

<b>Sales office</b>	De Valk Palma	<b>Telephone</b>	+34 971 40 29 11
<b>Address</b>	Port. Cala Nova, Avda. Joan Miro, 327 07015 Palma de Mallorca ES	<b>E-mail</b>	palma@devalk.nl

## DISCLAIMER

These particulars are given in good faith as supplied but cannot be guaranteed.



## GENERAL

Model	SUNSEEKER MANHATTAN 62
Type	motor yacht
LOA (m)	19,60
LWL (m)	18,75
Beam (m)	4,75
Draft (m)	1,60
Headroom (m)	2,05
Year built	2000
Builder	Sunseeker International
Country	United Kingdom
Designer	Sunseeker
Displacement (t)	29
Gross tonnage	60
CE norm	A
Hull material	GRP
Hull colour	white Just polished
Hull shape	Fast Displacement Hull
Superstructure material	GRP
Rubbing strake	stainless steel
Deck material	GRP
Deck finish	synthetic teak New 2021
Superstructure deck finish	non-skid moulded in
Cockpit deck finish	synthetic teak New 2021
Antifouling (year)	Coppercoat (2017)
Window frame	aluminium
Window material	perspex
Deckhatch	yes
Portholes	stainless steel
Insulation	yes
Flybridge	With sink and fridge



# SUNSEEKER MANHATTAN 62

Radar arch	non collapsible
Fuel tank (litre)	aluminium 1750
Fuel tank 2 (litre)	aluminium 1750
Level indicator (fuel tank)	Gauge
Freshwater tank (litre)	aluminium 1200
Level indicator (freshwater)	Gauge
Blackwater tank (litre)	aluminium 250
Wheel steering	hydraulic
Inside helm position	In saloon
Flybridge helm position	hydraulic
Extra info	Hull just polished and in excellent condition

## ACCOMMODATION

Cabins	3
Berths	6
Crew cabin	Single bed
Interior	Ahorn
Layout	3 cabin version
Floor	carpet
Aft deck	yes
Deck saloon	yes
Headroom saloon (m)	2,05
Heating	yes
Air-conditioning	4 x reversible (new 2021)
Sliding door to aft deck	yes
Galley	yes
Countertop	corian
Sink	stainless steel Double
Cooker	electric Zanussi
Microwave/oven combi	Whirlpool
Fridge	Waeco



Freezer	Waeco
Hot water system	220V + engine Boiler
Water pressure system	electrical
Manual and/or foot pump	yes
Dishwasher	Whirlpool
Kettle	yes
Hot water tap	yes
Coffee maker	yes
Crockery	yes
Owners cabin	double bed Forward
Bed length (m)	2,00 x 1,50
Wardrobe	hanging and shelves
Toilet	en suite
Toilet system	vacuum
Wash basin	at the toilet
Shower	en suite
Guest cabin 1	twin single
Bed length (m)	2,00 x 0,80
Wardrobe	hanging and shelves
Toilet	shared
Toilet system	vacuum
Wash basin	at the toilet
Shower	shared
Guest cabin 2	double bed
Bed length (m)	2,00 x 1,40
Wardrobe	hanging and shelves
Washing machine	Siemens (new)
Central vacuum cleaner	yes
Flybridge	With bar
Extra info	Interior in excellent conditions



## MACHINERY

No of engines	2
Make	MAN
Type	D2848LE403
HP	800
kW	588.80
Fuel	diesel
Year installed	2000
Maximum speed (kn)	31
Cruising speed (kn)	20
Engine hours	2100
Engine cooling system	freshwater heat exchanger
Drive	shaft
Engine controls	hydraulic
Gearbox	hydraulic ENV
Engine controls	hydraulic
Bowthruster	hydraulic
Exhaust	watercooled
Propeller type	fixed
Propeller blades	5
Propeller shaft material	stainless steel
Shaft lubrication	water
Manual bilge pump	1 unit
Electric bilge pump	5 units
Electrical installation	12 & 24V system
Generator	wet exhaust Kohler 18kW (overhauled in 2020)
Running hours generator	5000
Start battery	4 x 12V / 105 Ah Acid (2022)
Service battery	4 x 12V / 105 Ah Acid (2022)
Battery monitor	Gauge & display
Battery charger	yes



Inverter	yes
Shorepower	with cable 230V
Extra info	Official MAN service in 2022

## NAVIGATION

Compass	Ritchie
Compass on flybridge	Ritchie
Depth sounder/log	VDO
Repeater	yes
VHF	2 x Simrad (2022)
Autopilot	Genoav AP401 (2 units)
Rudder angle indicator	Gauge
Radar	Furuno
Plotter/GPS	Raymarine E120 Hybrid touch
Navtex	Nav 4
Electronic chart(s)	yes
EPIRB	Sea Safe E100
Navigation lights	yes
Searchlight	yes

## EQUIPMENT

Fixed windscreen	yes
Sprayhood	yes
Bimini	yes
Sun awning	yes
Cockpit cushions	yes
Cockpit table	yes
Cockpit chairs	yes
Bathing platform	yes
Boarding ladder	stainless steel
Transom door	yes



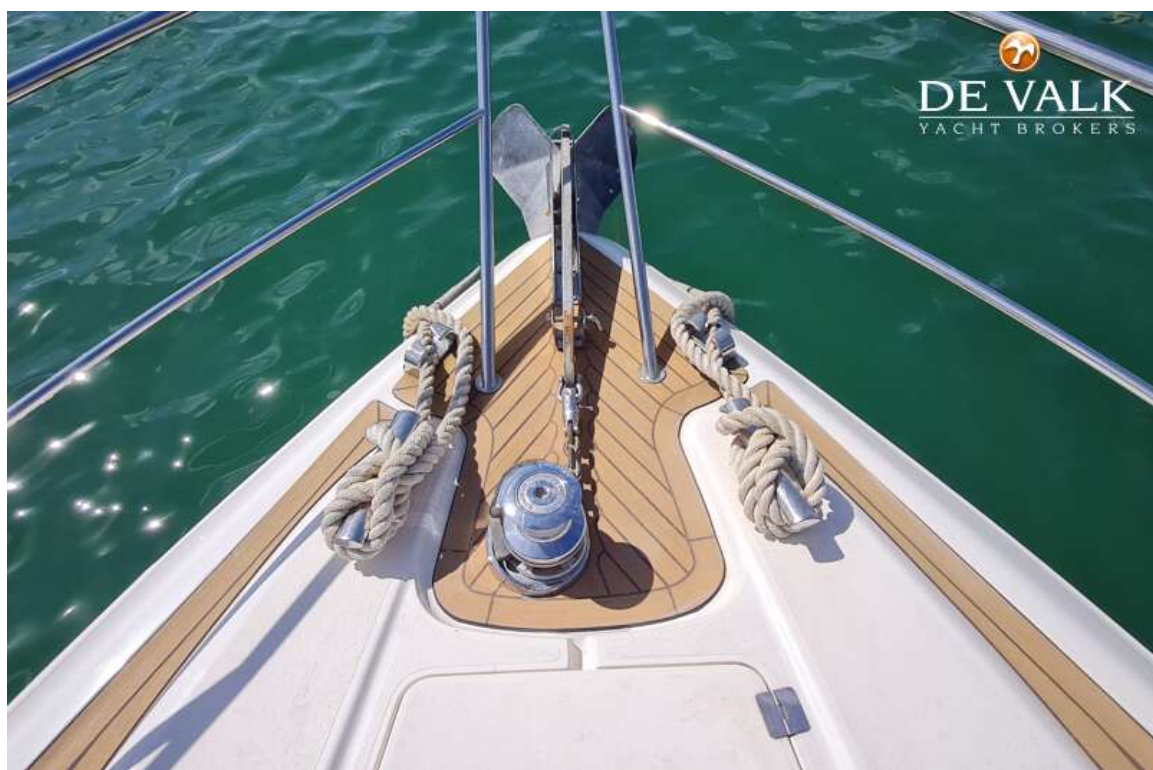
# SUNSEEKER MANHATTAN 62

Gangway	Hydraulic
Deck shower	yes
Anchor	Lewmar
Anchor chain	60m
Windlass	electrical Lofrans (new 2022)
Deck wash	yes
Deck crane	electric New 2021
Sea railing	stainless steel
Grab rail (superstructure)	stainless steel
Pushpit	yes
Life raft	container Sea Safe
Life raft (pers)	8
Last life raft survey	10.2022
Lifejackets	yes
Wiper	yes
Clearview window	yes
Horn	electric
Radar reflector	yes
Fenders	yes
Mooring lines	yes
Tools	yes
TV receiver	yes
Radio-cd player	Bose
DVD player	Bose
Cockpit speakers	yes
Speakers in salon	Bose
Fire extinguisher	New system 2022
Latest extinguisher survey	4 new units 2022
Extinguisher in engine room	yes
Auto extinguisher system	New in 2022





# SUNSEEKER MANHATTAN 62



# SUNSEEKER MANHATTAN 62





# SUNSEEKER MANHATTAN 62



# SUNSEEKER MANHATTAN 62





# SUNSEEKER MANHATTAN 62

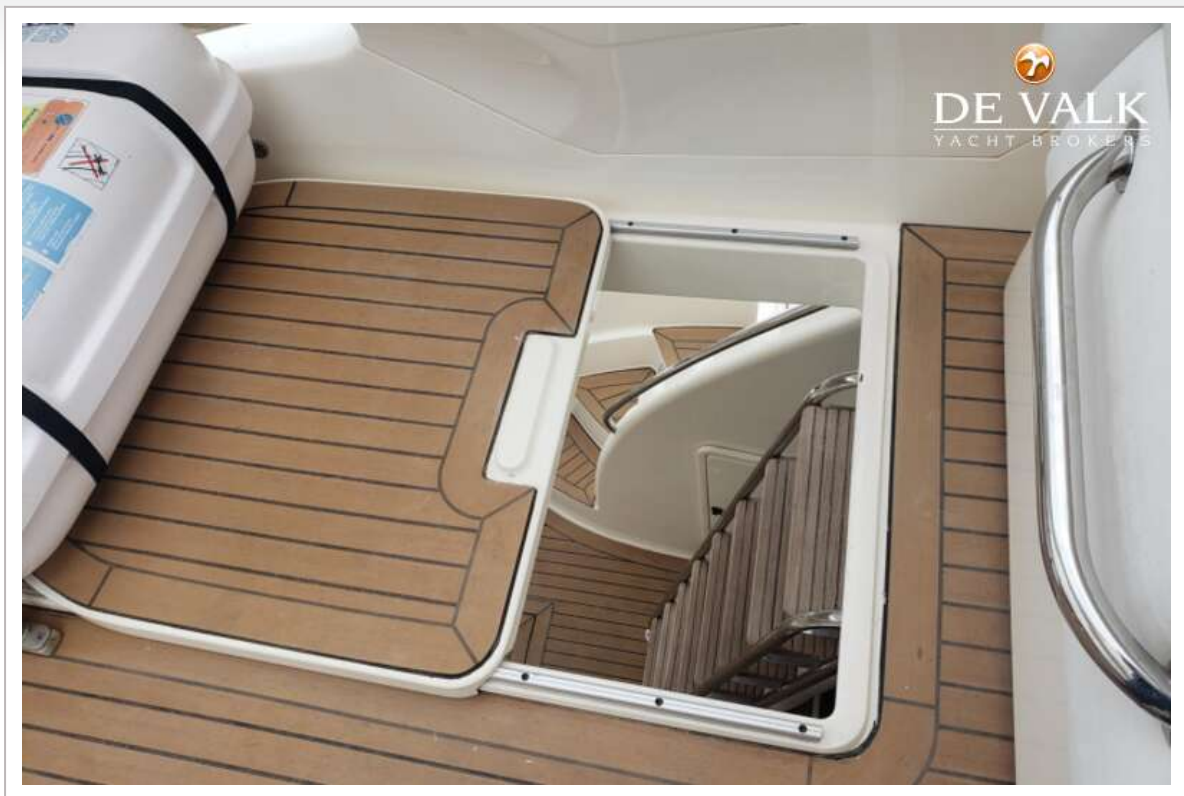


# SUNSEEKER MANHATTAN 62

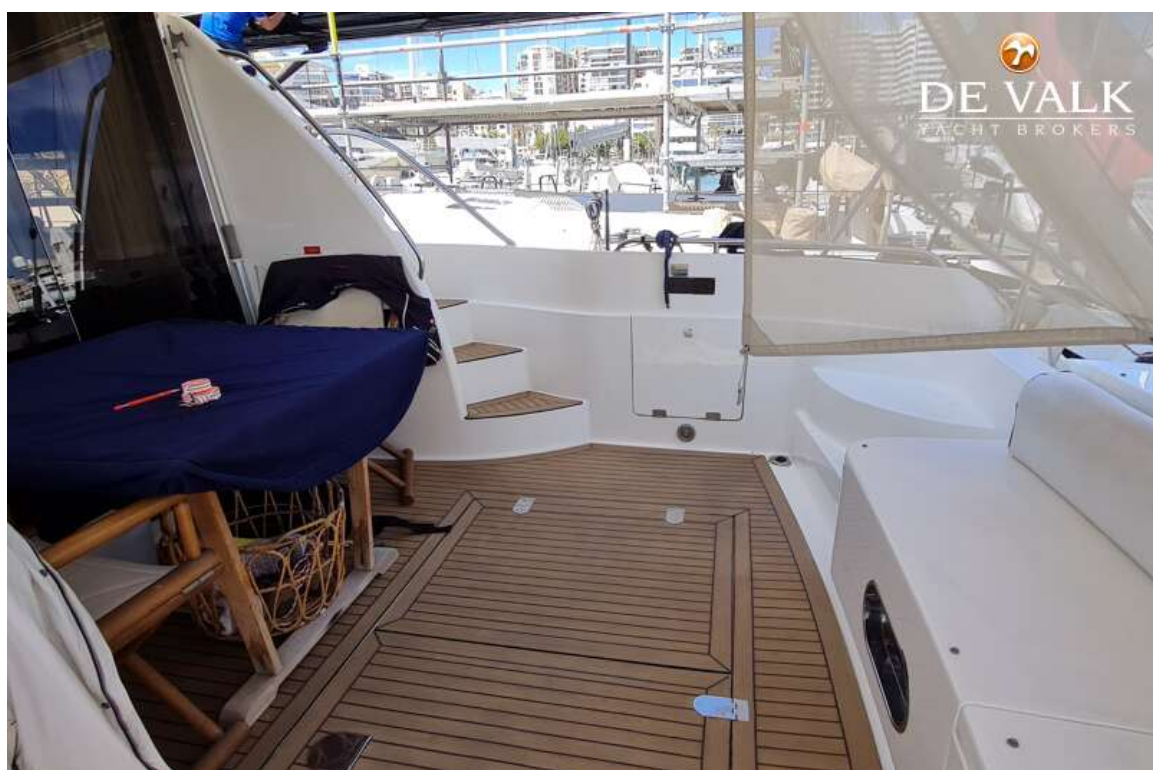




# SUNSEEKER MANHATTAN 62



# SUNSEEKER MANHATTAN 62





# SUNSEEKER MANHATTAN 62

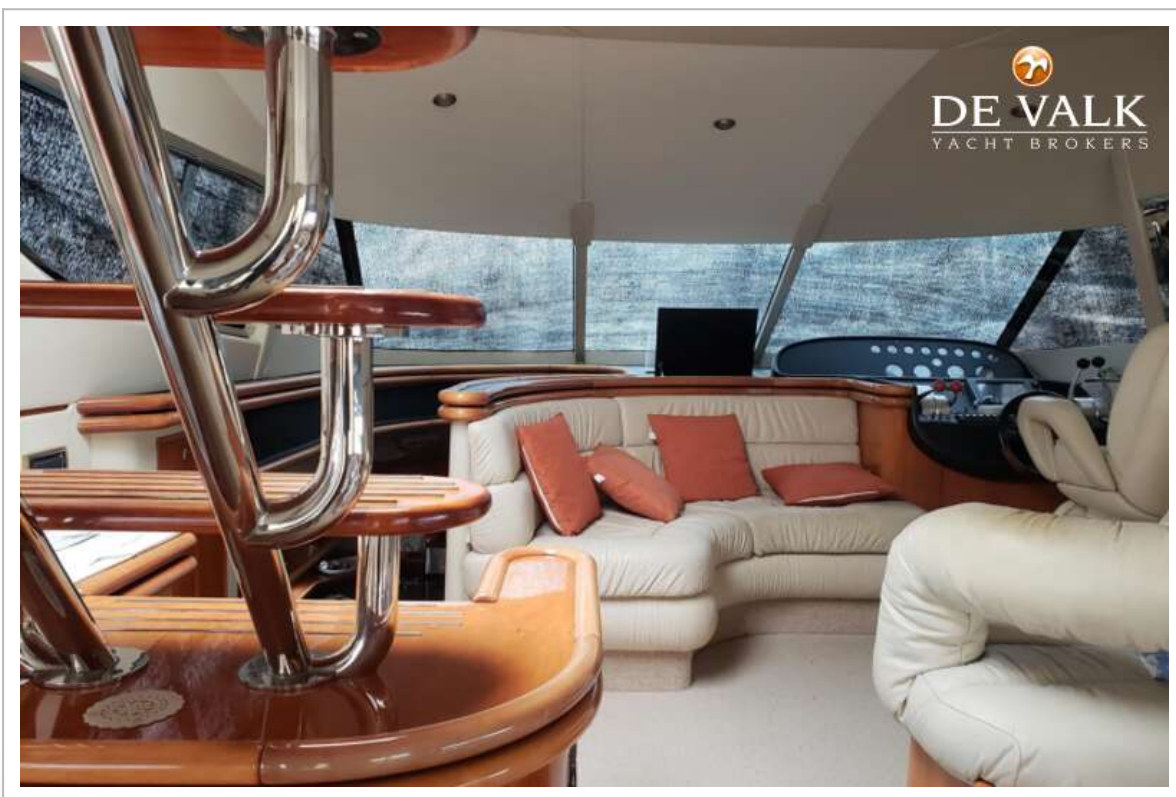


# SUNSEEKER MANHATTAN 62

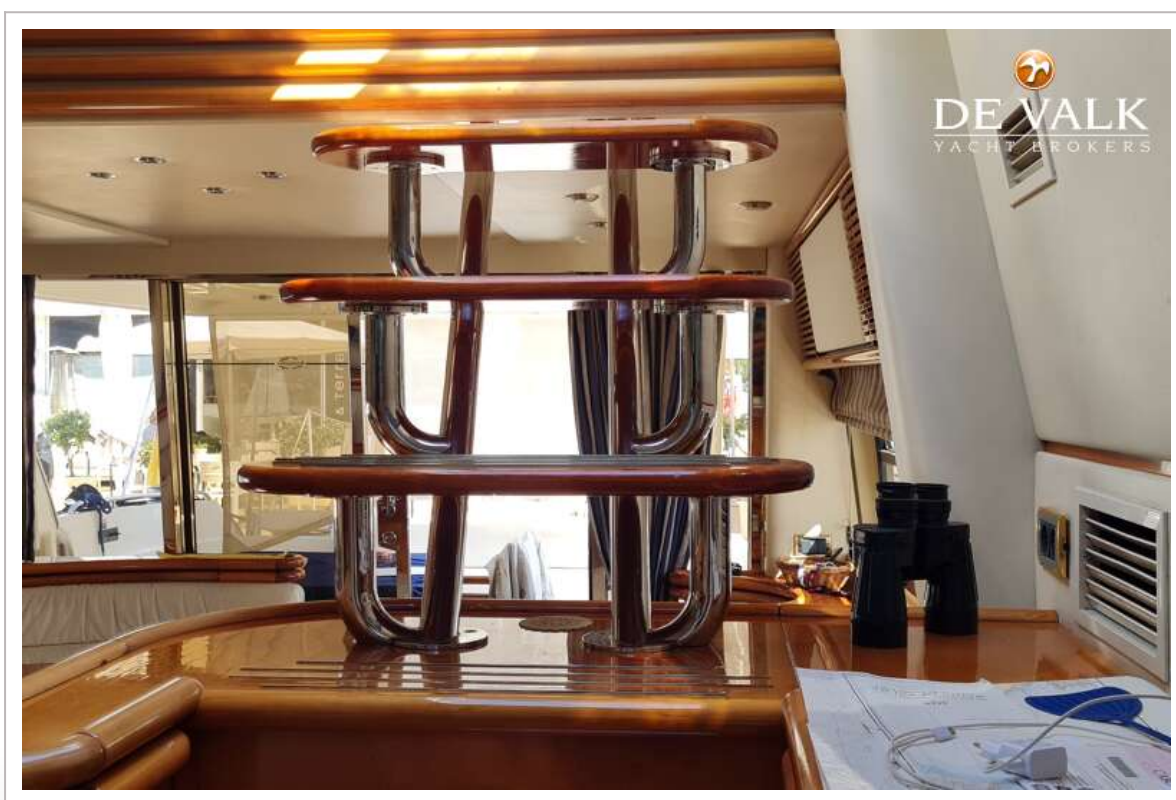
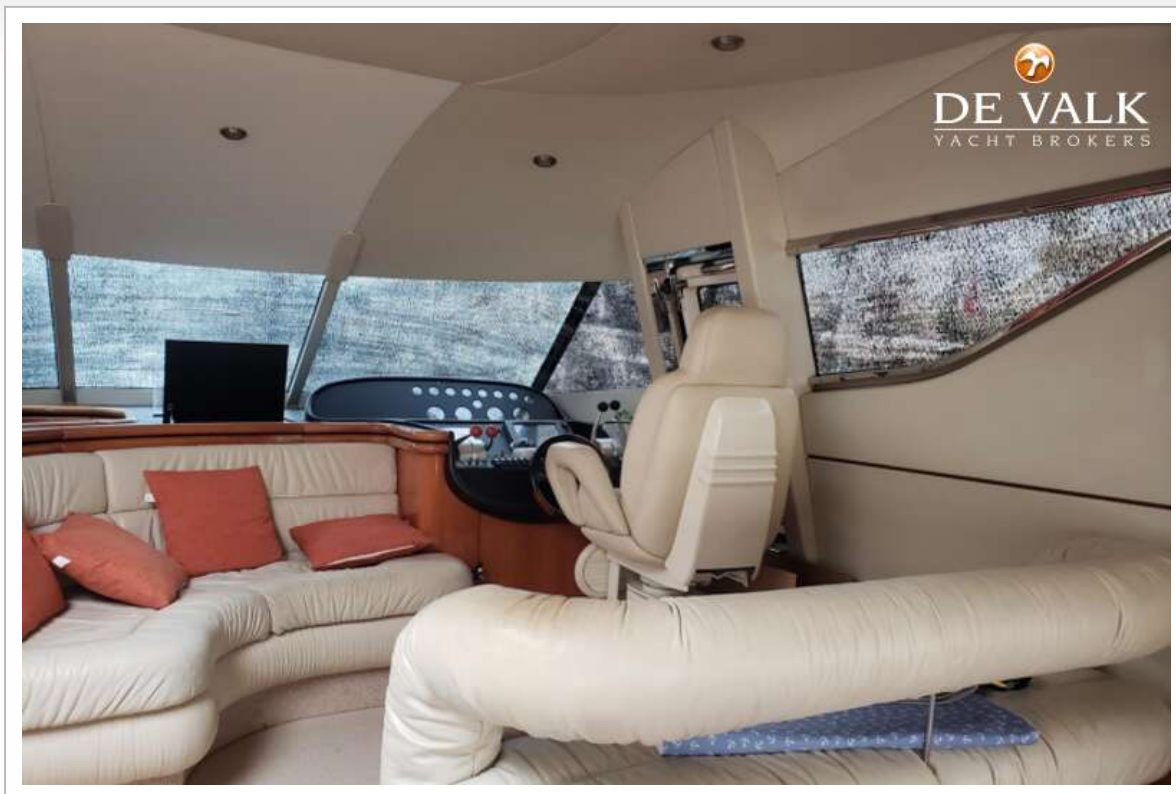




# SUNSEEKER MANHATTAN 62



# SUNSEEKER MANHATTAN 62





# SUNSEEKER MANHATTAN 62

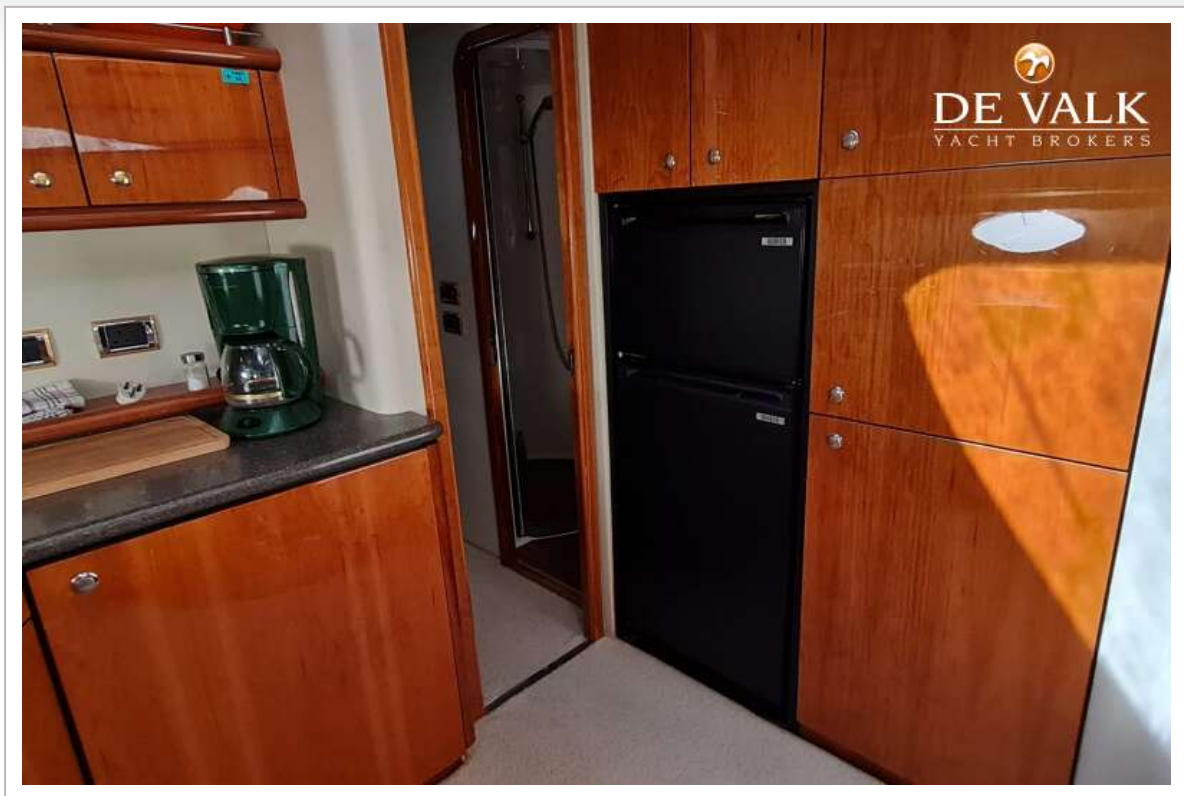


# SUNSEEKER MANHATTAN 62





## SUNSEEKER MANHATTAN 62



## SUNSEEKER MANHATTAN 62

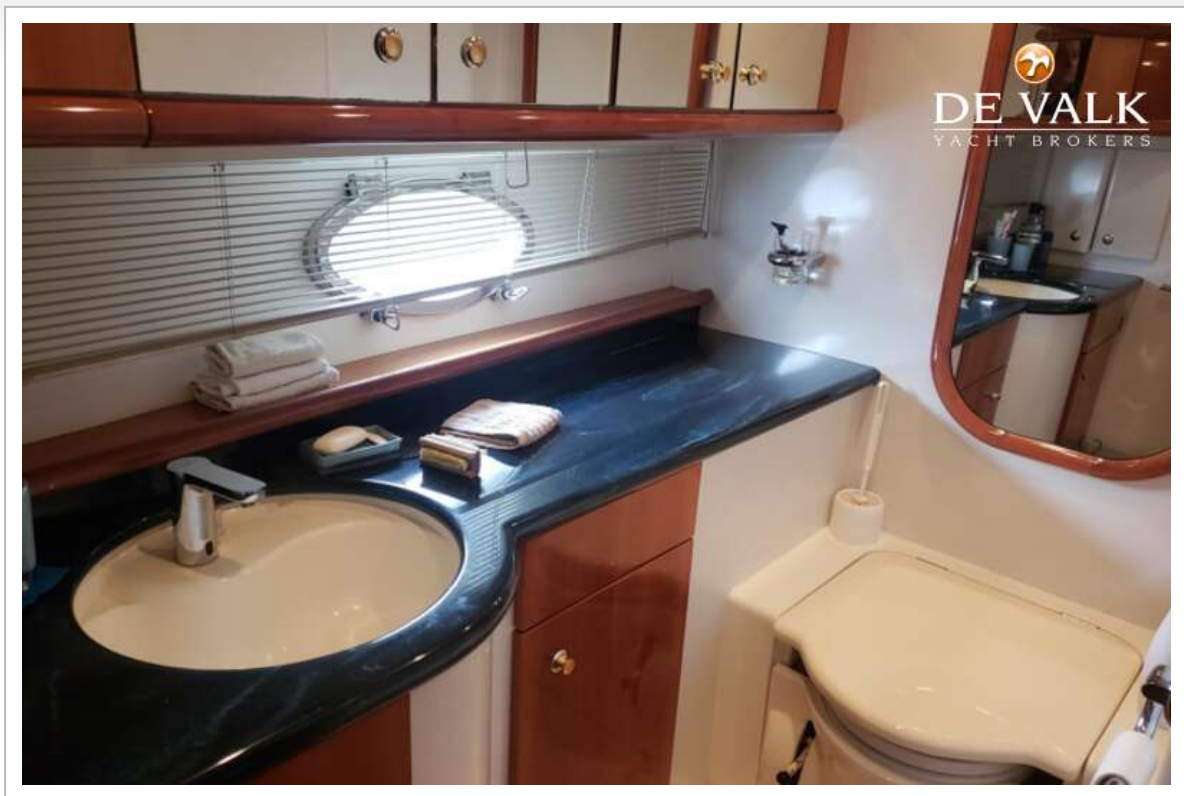




## SUNSEEKER MANHATTAN 62



## SUNSEEKER MANHATTAN 62



# SUNSEEKER MANHATTAN 62

