



DUFOUR 375 GRAND LARGE

DUFOUR 375 GRAND LARGE

BROKER'S COMMENTS

Striking design by Umberto Felci and the Dufour design team. Airy and light interior with lots of windows and opening portholes for comfortable stays onboard. With her three cabin layout she is ideal for families and friends. Sailing and handling the Dufour cruising yachts have a good reputation and the Dufour 375 surely delivers. In the cockpit the twin steering wheels provide for excellent access and safety. This Dufour 375 is well maintained, little used with only 260 engine hours and now ready to visit on appointment.

Joris van de Rijt

SPECIFICATIONS

Dimensions	11.90 x 3.85 x 1.90 (m)	Builder	Dufour Yachts
Built	2011	Cabins	3
Material	GRP	Berths	7
Engine(s)	1 x Volvo Penta D2-40F diesel	Hp/Kw	39.00 (hp), 28.70 (kw)
Asking price	sold (VAT)	Lying	elsewhere / Not at sales office

CONTACT

Sales office	De Valk Sint Annaland B.V.	Telephone	+31 (0)166 601 000
Address	Koelhuisweg 4 4697 RM Sint Annaland NL	E-mail	sintannaland@devalk.nl

DISCLAIMER

These particulars are given in good faith as supplied but cannot be guaranteed.



DUFOUR 375 GRAND LARGE

GENERAL

Model	DUFOUR 375 GRAND LARGE
Type	sailing yacht
LOA (m)	11,90
LWL (m)	9,89
Beam (m)	3,85
Draft (m)	1,90
Air draft (m)	16,50
Headroom (m)	1,95
Year built	2011
Launched	2012
Builder	Dufour Yachts
Country	France
Designer	Umberto Felci & Dufour Design Team
Displacement (t)	7
Ballast (tonnes)	cast iron 1,95
CE norm	A
Hull material	GRP
Hull colour	white
Hull shape	round-bilged
Keel type	fin keel
Superstructure material	GRP
Rubbing strake	stainless steel
Deck material	GRP
Deck finish	non-skid moulded in
Superstructure deck finish	teak & non-skid moulded in
Cockpit deck finish	teak
Antifouling (year)	2023
Dorades	yes
Window material	polycarbonate
Deckhatch	Lewmar with Ocean Air Screens & Blinds



DUFOUR 375 GRAND LARGE

Portholes	yes
Fuel tank (litre)	polyethylene 200
Level indicator (fuel tank)	yes
Freshwater tank (litre)	polyethylene 260 (in two tanks)
Level indicator (freshwater)	yes
Blackwater tank (litre)	polyethylene
Blackwater tank extraction	deck extraction + uw line
Wheel steering	cable steering 2 stainless steel Lewmar black leather covered wheels & covers
Emergency tiller	yes
Extra info	Underwater hull treaded with an epoxy system in 2016
Extra info	6 x aluminium mooring clamp (so also midships)
Extra info	Gasprings on cockpit locker hatches

ACCOMMODATION

Cabins	3
Berths	7
Interior	mahogany
Floor	woodprint
Saloon	2 x sets Alcantara saloon cushions (blue + white)
Headroom saloon (m)	1,95
Heating	diesel ducted hot air Webasto with openings in all cabins & salon
Chart table	On starboard side
Aft Cabin	2 x
Dinette	yes
Galley	On starboard side along the hull
Countertop	corian White
Sink	stainless steel 2 x
Cooker	calor gas 2 burner
Oven	yes
Microwave	Eno



DUFOUR 375 GRAND LARGE

Fridge	Top loader with an Isotherm compressor
Hot water system	220V + engine
Water pressure system	electrical
Manual and/or foot pump	(fresh water)
Crockery	Dufour
Owners cabin	double bed In Front Cabin
Bed length (m)	2,30 x 1,30
Wardrobe	hanging and shelves
Bathroom	shared
Toilet	shared
Toilet system	manual Jabsco
Wash basin	in the bathroom
Shower	shared
Guest cabin 1	double bed Starboard aft cabin
Bed length (m)	1,97 x 1,40
Wardrobe	hanging and shelves
Guest cabin 2	double bed Port side aft cabin
Bed length (m)	1,97 x 1,40
Wardrobe	hanging and shelves
Extra info	Wine bottle storage in bilge

MACHINERY

No of engines	1
Make	Volvo Penta
Type	D2-40F
HP	39
kW	28.70
Fuel	diesel
Year installed	2011
Maximum speed (kn)	8
Cruising speed (kn)	6



DUFOUR 375 GRAND LARGE

Consumption (l/hr)	2,2
Engine hours	260
Engine cooling system	freshwater heat exchanger
Drive	sail-drive
Saildrive seal	(2011)
Engine controls	bowden cable
Bowthruster	electric Marinno Exturn 24 Volt, operates via remote control only.
Exhaust	watercooled
Propeller type	fixed
Propeller blades	2
Manual bilge pump	yes
Electric bilge pump	yes
Electrical installation	12 & 24 & 220 Volt
Start battery	1 x Optima Red Top 50 Ah (new in 2022)
Service battery	2 x 100 Ah (new 2021)
Bowthruster battery	2 x Optima Red Top 50 Ah (new in 2019)
Battery monitor	Mastervolt
Battery charger	Cristec 25 A
Inverter	Mastervolt Magic 12/24-10 (2023)
Diode battery combiners	yes
Shorepower	with cable
Extra info	The engine has been serviced annually by a Volvo dealer

NAVIGATION

Compass	2 x Plastimo Olympic 135 on helm positions
Depth sounder/log	Raymarine ST 70
Windset	Raymarine ST 70
Repeater	Raymarine ST 70
VHF	Raymarine Ray 240E with extra handset and speaker in cockpit
Autopilot	Raymarine



DUFOUR 375 GRAND LARGE

Rudder angle indicator	Via autopilot
Plotter/GPS	Raymarine C90W (at the cockpit table)
Electronis chart(s)	1 x
AIS transceiver	Raymarine AIS Class B
Navigation lights	LED
Extra info	VHF antenna + antenna cable new 2022

EQUIPMENT

Sprayhood	Beige
Cockpit cover	Beige (removable panels - extra aft panel with mosquito net)
Cockpit table	Fixed table with folding teak side panels
Bathing platform	Manual - covered with teak
Boarding ladder	stainless steel
Deck shower	Hot + cold (new in 2023)
Anchor	Delta
Anchor chain	20 meter galvanised
Windlass	electrical Quick
Outboard support	Plastic support on pushpit
Sea railing	wire Double stainless steel wired
Grab rail (superstructure)	teak
Railing side opening gates	On both sides
Pushpit	Stainless steel
Pulpit	Stainless steel
Lifebuoy	Orange
Fenders	yes
Mooring lines	yes
Spare parts	For the engine
TV	Akai
Radio-cd player	Sony
Cockpit speakers	2 x
Speakers in salon	2 x VDO



DUFOUR 375 GRAND LARGE

Fire extinguisher	1 x
Latest extinguisher survey	Need to be renewed
Extra info	2x Emergency Rocket and 3x hand flare (approved until 2025)
Extra info	Every winter on the hard since 2016 (except winter 2020-2021).

RIGGING

Rigging	fractional 9/10
Standing rigging	wire
Brand mast	Sparcraft
Material mast	aluminium
Spreaders	2 x set
Mainsail cover	Beige Lazy-Bag and (new in 2023) Lazy Jacks
Fully battened mainsail	Elvström
Genoa	Elvström furling Genoa with beige UV strip
Genoa furler	Furlex 204S (new 2016)
Genoa cover	Beige
Reefing System	quick-one-line-reefing
Boomvang	gasspring Sparcraft
Genoa sheetwinches	2 x Harken 40 ST
Halyard winches	2 x Harken 35 ST



DUFOUR 375 GRAND LARGE



DUFOUR 375 GRAND LARGE



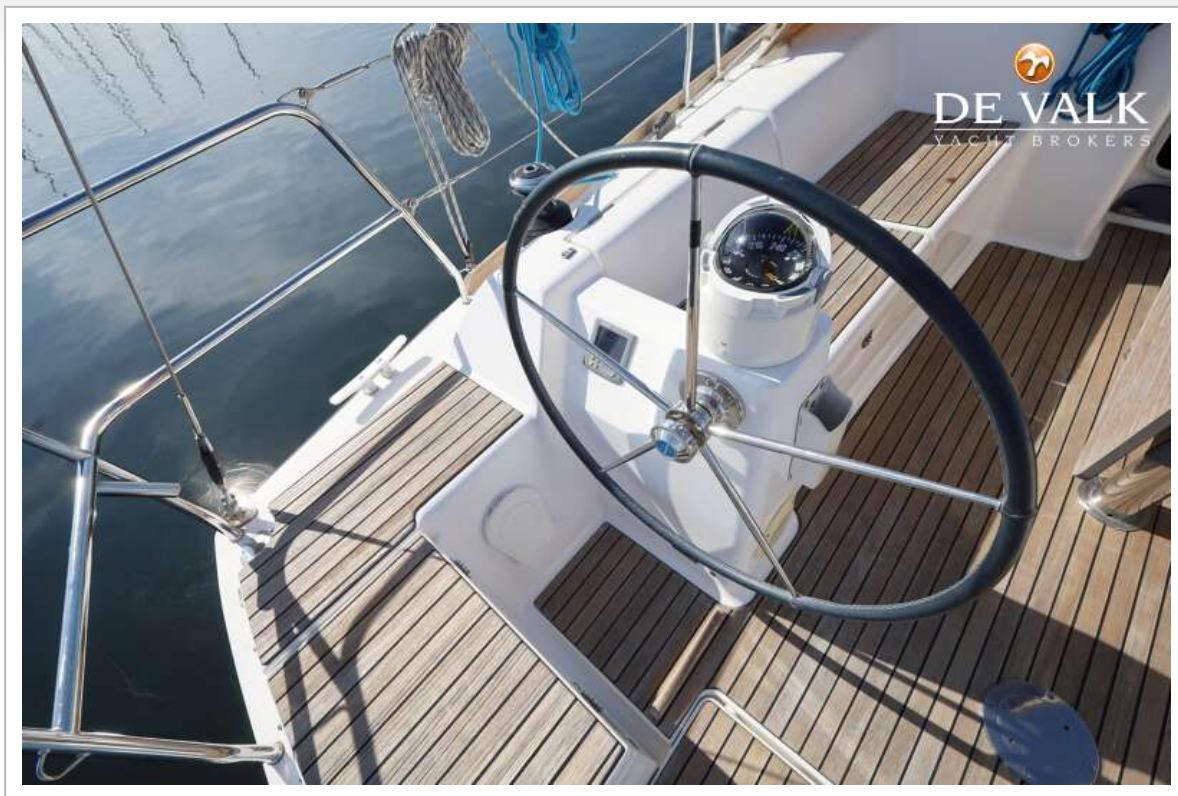
DUFOUR 375 GRAND LARGE



DUFOUR 375 GRAND LARGE



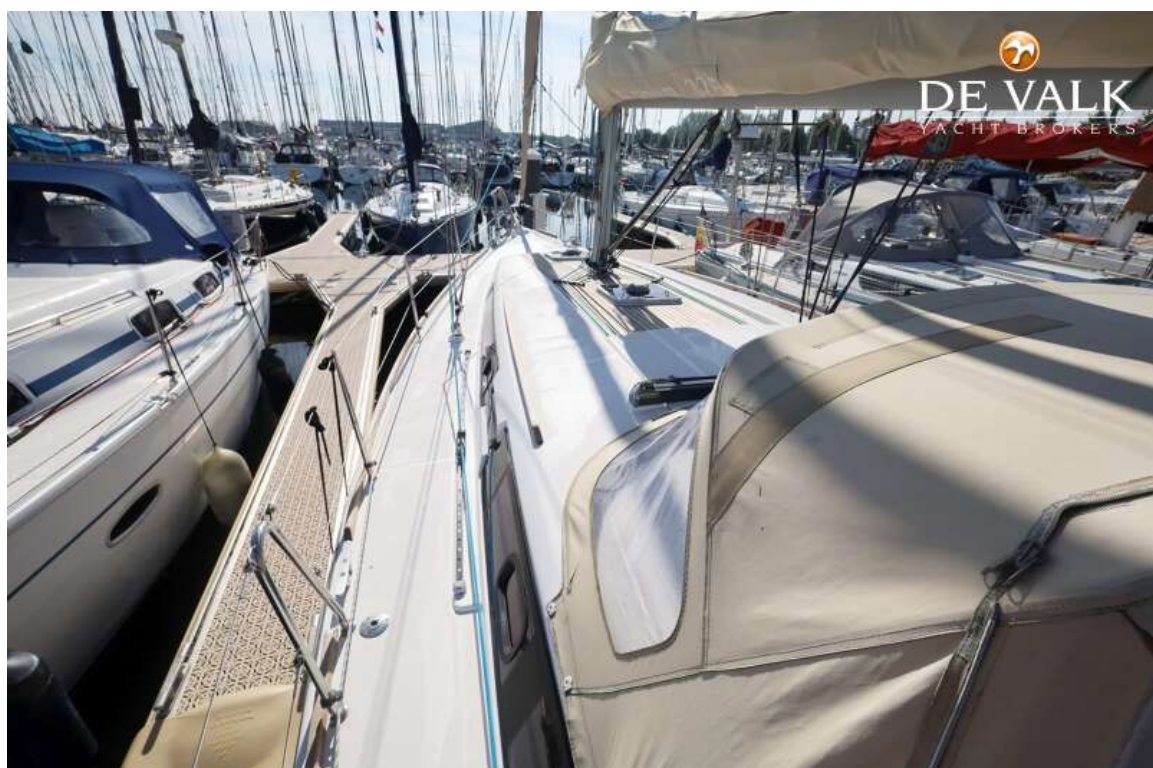
DUFOUR 375 GRAND LARGE



DUFOUR 375 GRAND LARGE



DUFOUR 375 GRAND LARGE



DUFOUR 375 GRAND LARGE



DUFOUR 375 GRAND LARGE



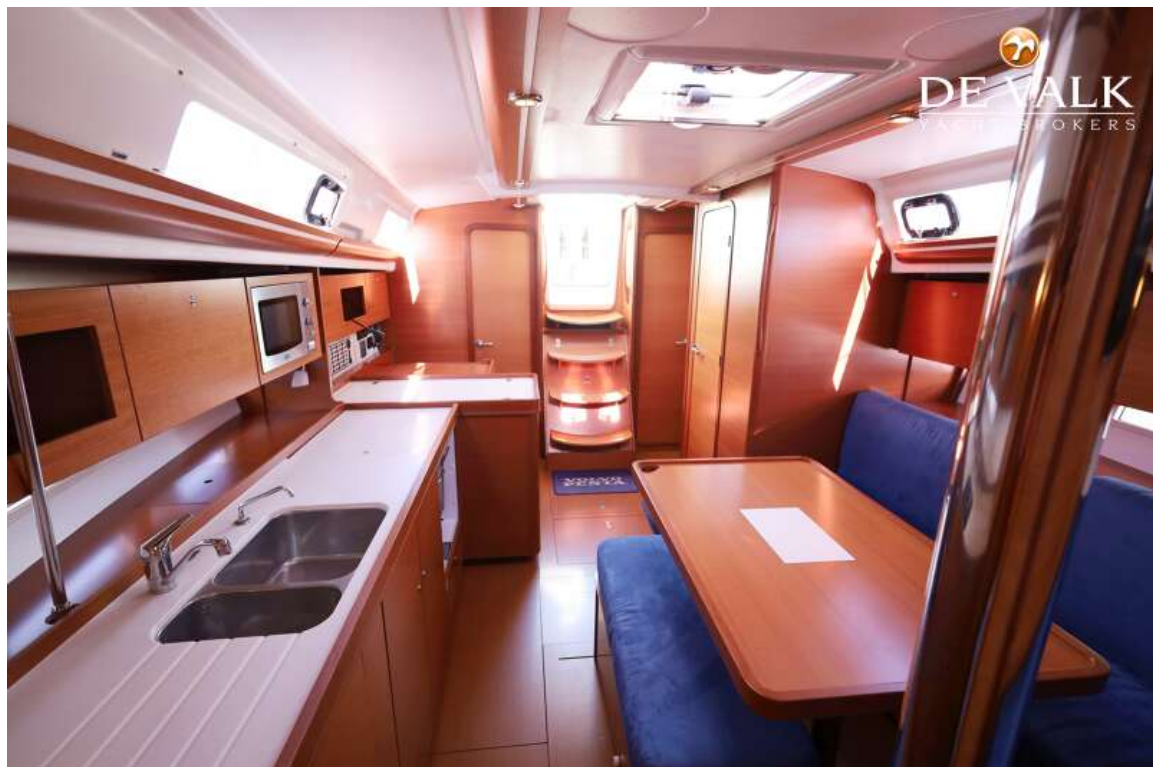
DUFOUR 375 GRAND LARGE



DUFOUR 375 GRAND LARGE



DUFOUR 375 GRAND LARGE



DUFOUR 375 GRAND LARGE



DUFOUR 375 GRAND LARGE



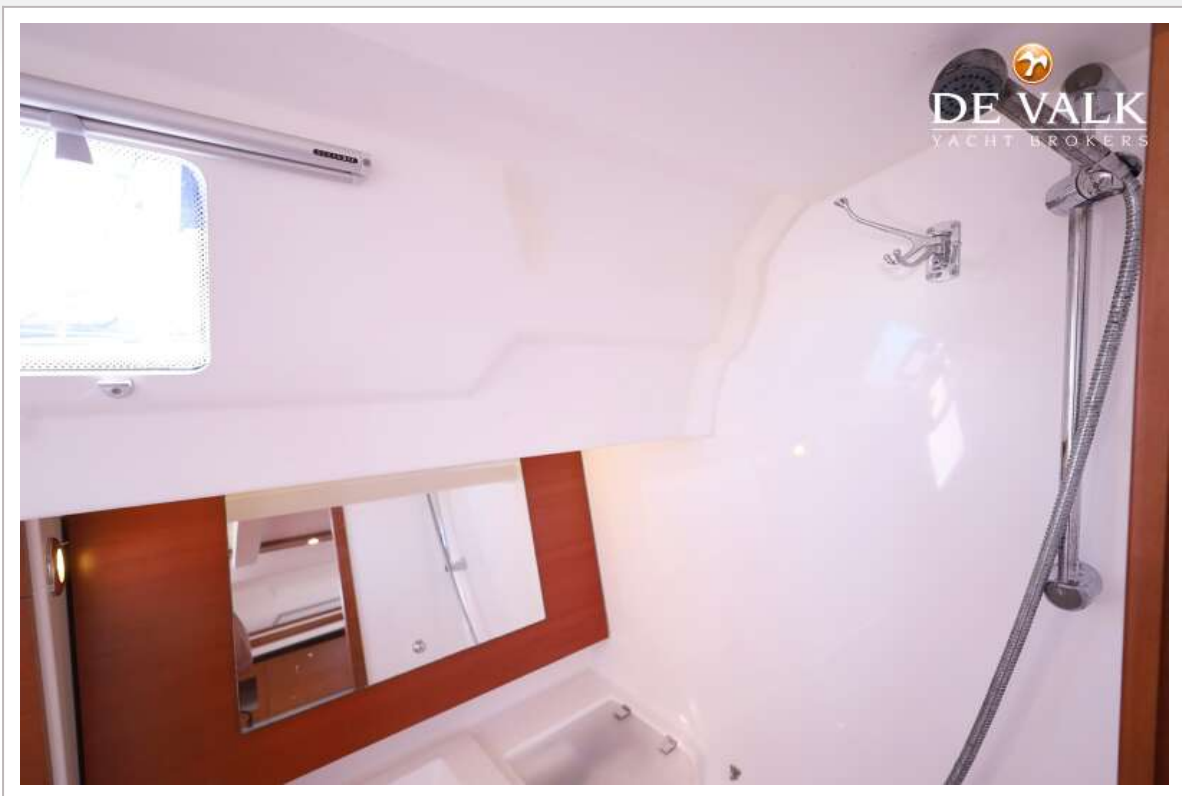
DUFOUR 375 GRAND LARGE



DUFOUR 375 GRAND LARGE



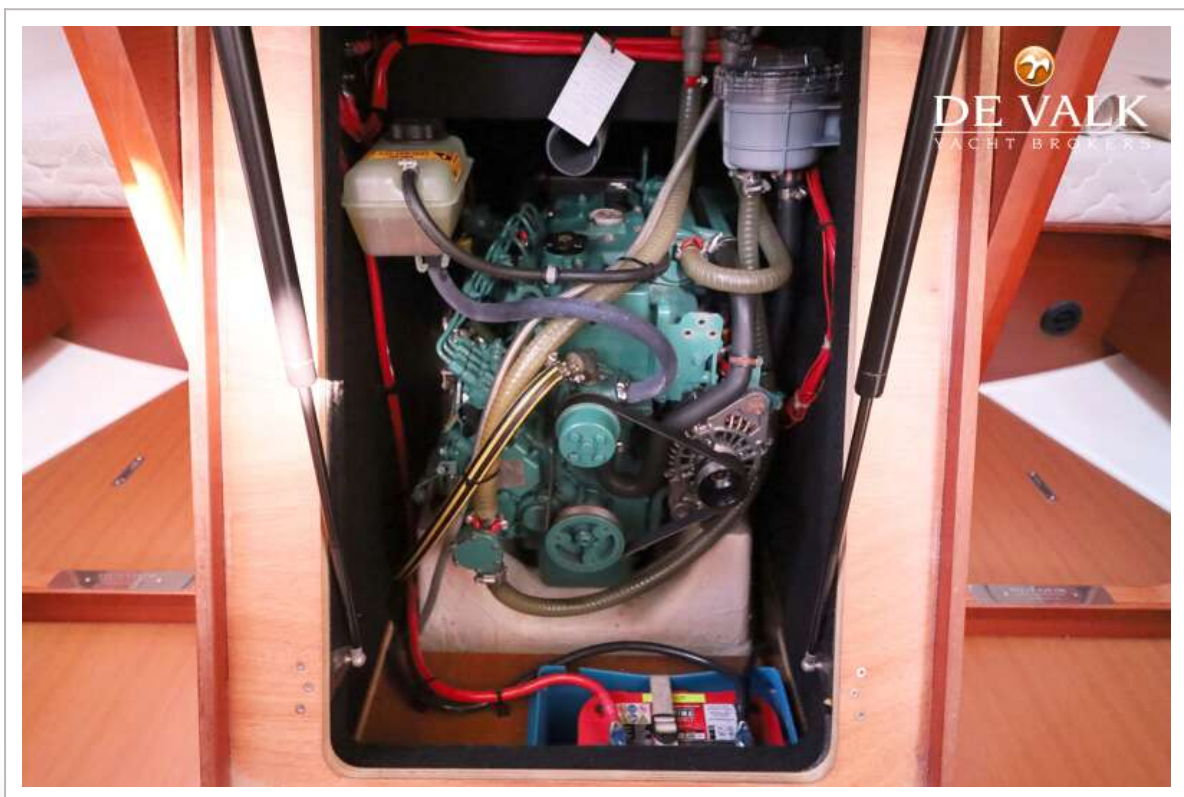
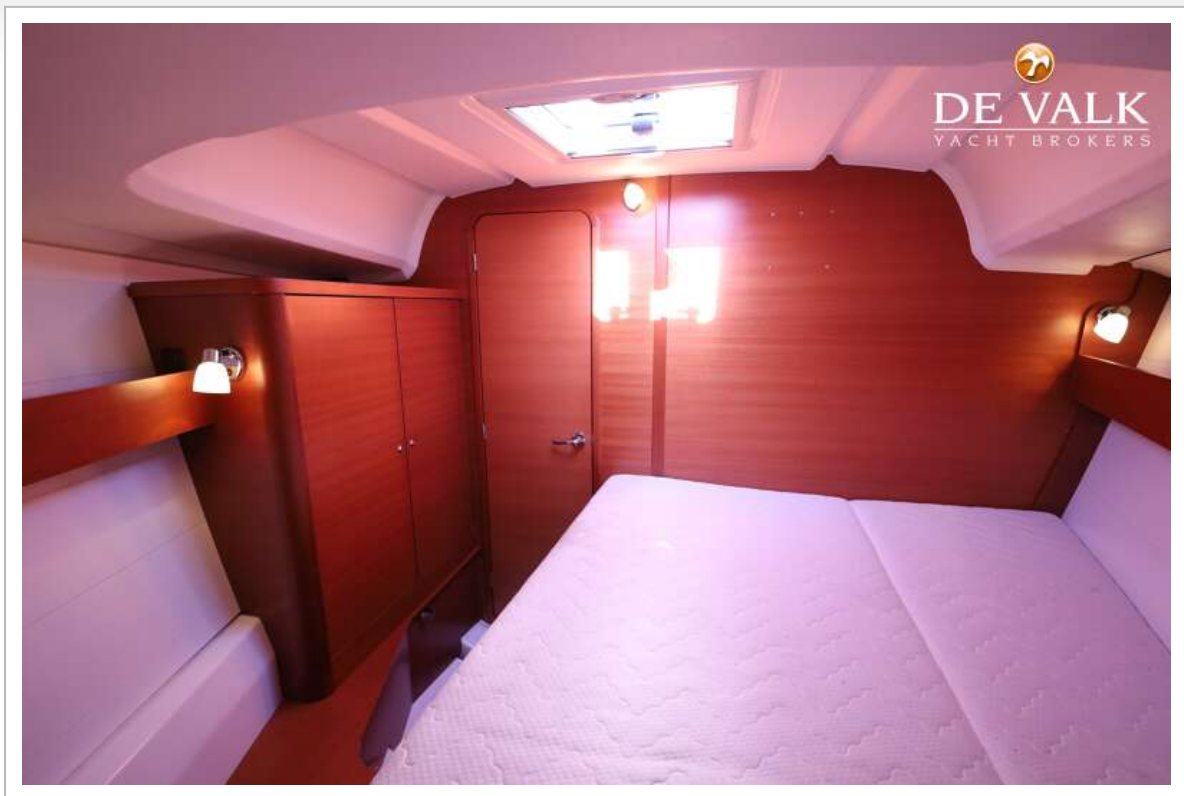
DUFOUR 375 GRAND LARGE



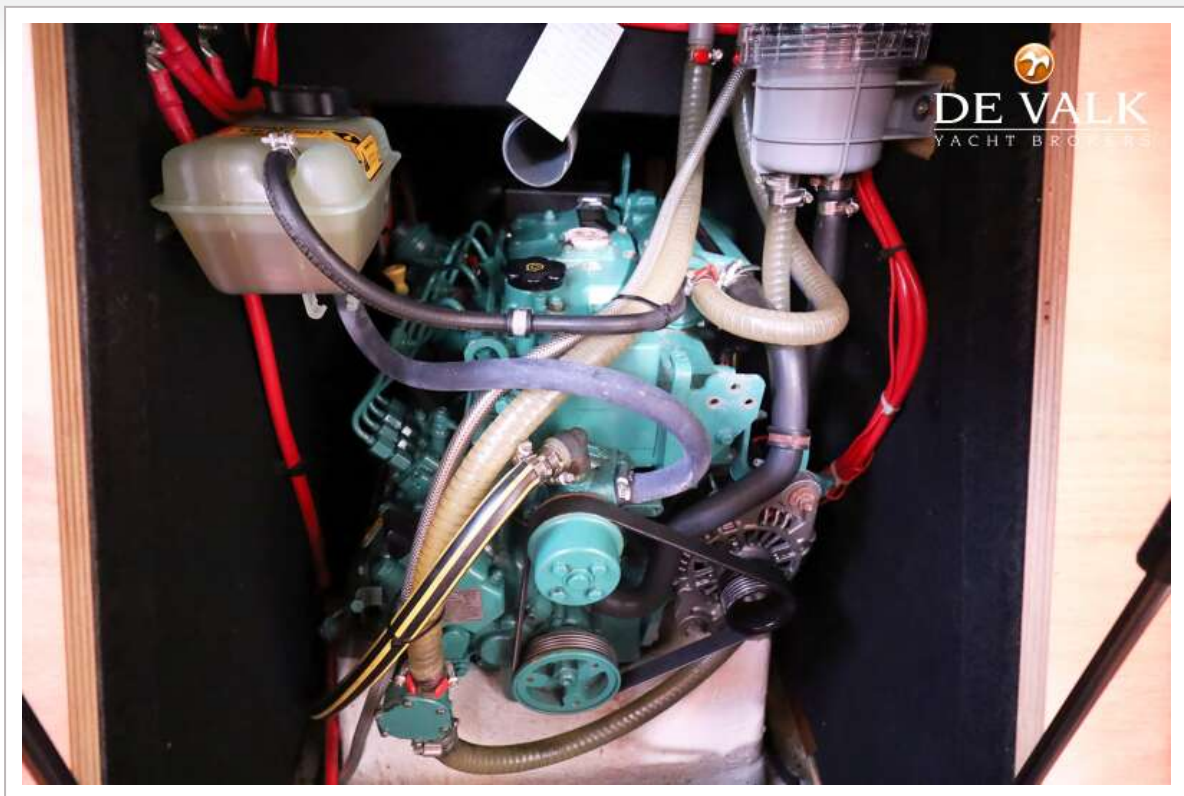
DUFOUR 375 GRAND LARGE



DUFOUR 375 GRAND LARGE



DUFOUR 375 GRAND LARGE



DUFOUR 375 GRAND LARGE

