



DE VALK
YACHT BROKERS



HOUSEBOAT MS COMPAGNON



DE VALK
YACHT BROKERS

HOUSEBOAT MS COMPAGNON

BROKER'S COMMENTS

The M.S. Compagnon is a true Dutch classic of Dutch manufacture. The ship was built in 1965 and was put into service as an executive vessel at the time. It can also be used to provide day tours due to her wide equipment, such as a real classic ship's bar and multiple seats all over the ship. With her twin engines and bow thruster, the vessel is easy to maneuver. The MS Compagnon can only be viewed by appointment.

Mark Hesselmans

SPECIFICATIONS

Dimensions	20.05 x 4.70 x 1.00 (m)	Builder	Werf FA. J. Schlieker en Zn
Built	1965	Cabins	1
Material	Steel	Berths	2
Engine(s)	2 x DAF 575 diesel	Hp/Kw	2 x 100.00 (hp), 73.60 (kw)
Asking price	Under Offer (VAT)	Lying	elsewhere / Not at sales office

CONTACT

Sales office	De Valk Loosdrecht B.V.	Telephone	+31 (0)35 582 90 30
Address	't Breukeleveense Meentje 6 1231LM Loosdrecht / Wijdmeren NL	E-mail	loosdrecht@devalk.nl

DISCLAIMER

These particulars are given in good faith as supplied but cannot be guaranteed.



HOUSEBOAT MS COMPAGNON

GENERAL

Model	HOUSEBOAT MS COMPAGNON
Type	motor yacht
LOA (m)	20,05
Beam (m)	4,70
Draft (m)	1,00
Air draft (m)	5,40
Air draft min (m)	3,60
Year built	1965
Launched	2008 complete rebuild from commercial to pleasure vessel.
Builder	Werf FA. J. Schlieker en Zn
Country	The Netherlands
Hull material	steel
Hull colour	white
Superstructure material	steel From 2008
Rubbing strake	steel
Deck material	steel
Deck finish	non-skid moulded in
Dorades	2x
Window frame	aluminium
Window material	polycarbonate
Deckhatch	yes
Radar arch	collapsible
Mast can be lowered	manual
Fuel tank (litre)	steel
Fuel tank 2 (litre)	steel
Freshwater tank (litre)	polyethylene
Level indicator (freshwater)	yes
Wheel steering	hydraulic
Inside helm position	yes



HOUSEBOAT MS COMPAGNON

ACCOMMODATION

Cabins	1
Berths	2
Interior	yes
Layout	yes
Floor	teak
Saloon	yes
Heating	central heating Maritime booster
Galley	yes
Countertop	plastic
Sink	stainless steel
Cooker	electric Ignis
Microwave/oven combi	Samsung C108STF
Fridge	1x Zanussi, 1x Liebherr
Hot water system	220V + engine
Water pressure system	electrical
Dishwasher	Octalux
Wardrobe	hanging and drawers
Toilet	separate
Toilet system	electric
Wash basin	at the toilet
Shower	separate

MACHINERY

No of engines	2
Make	DAF
Type	575
HP	100
kW	73.60
Fuel	diesel
Engine hours	Bb: 3206 SB: 3578



HOUSEBOAT MS COMPAGNON

Engine cooling system	freshwater heat exchanger
Drive	shaft
Engine controls	bowden cable
Gearbox	mechanical
Bowthruster	electric
Propeller type	fixed
Propeller shaft material	stainless steel
Shaft lubrication	grease
Generator	BW generatortechnik
Running hours generator	5700
Batteries	yes
Start battery	VMF 12V/120Ah
Service battery	4x Bosch 12v/230Ah
Generator battery	yes
Bowthruster battery	2x Bosch 12V/230Ah
Battery charger/inverter	Victron multi 24V/2500W
Shorepower	with cable

NAVIGATION

Compass	yes
Multi control display	Phoenix
Depth sounder	yes
VHF	Shipmate RS 8300
Rudder angle indicator	Vetus
Radar	Raytheon
AIS receiver	yes
Navigation lights	yes

EQUIPMENT

Fixed windscreen	yes
Cockpit cushions	yes



HOUSEBOAT MS COMPAGNON

Cockpit table	yes
Bathing platform	yes
Boarding ladder	stainless steel
Anchor	yes
Anchor chain	yes
Wiper	3x Speich
Horn	yes
Fenders	yes
Mooring lines	yes
TV	yes
Cockpit speakers	Sony
Speakers in salon	Rockford



HOUSEBOAT MS COMPAGNON



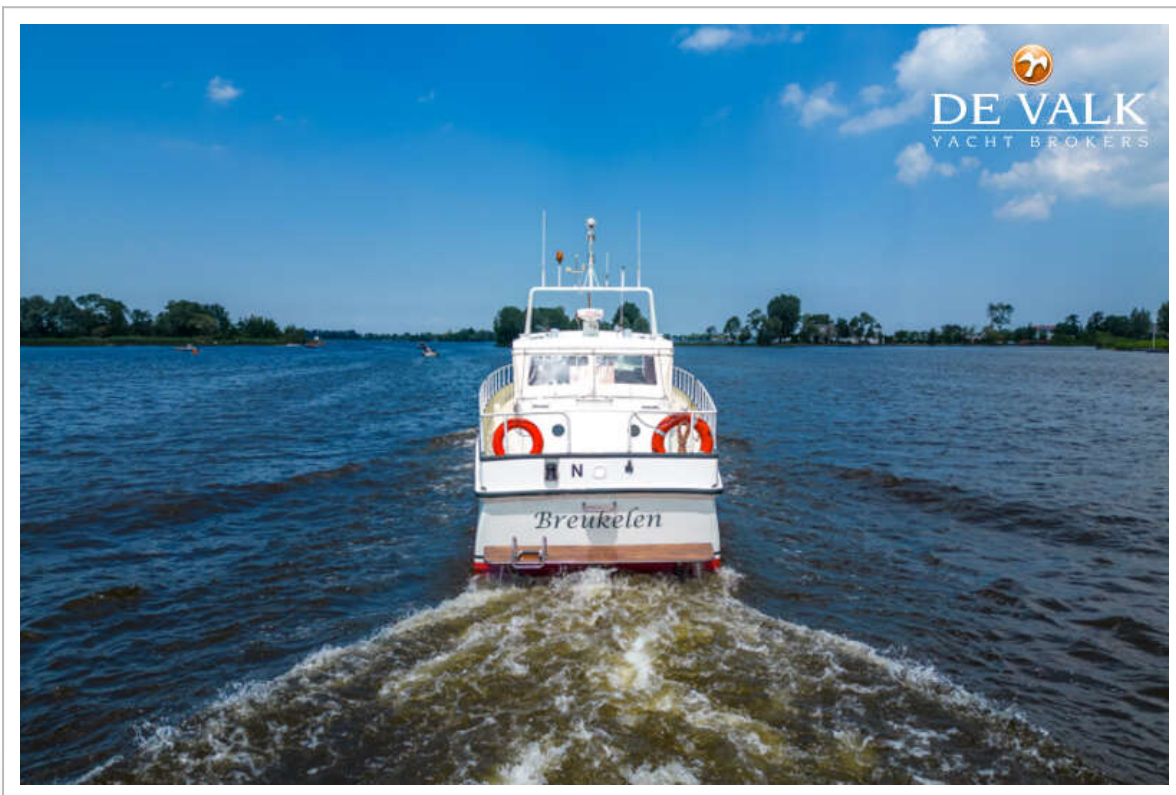
HOUSEBOAT MS COMPAGNON



HOUSEBOAT MS COMPAGNON



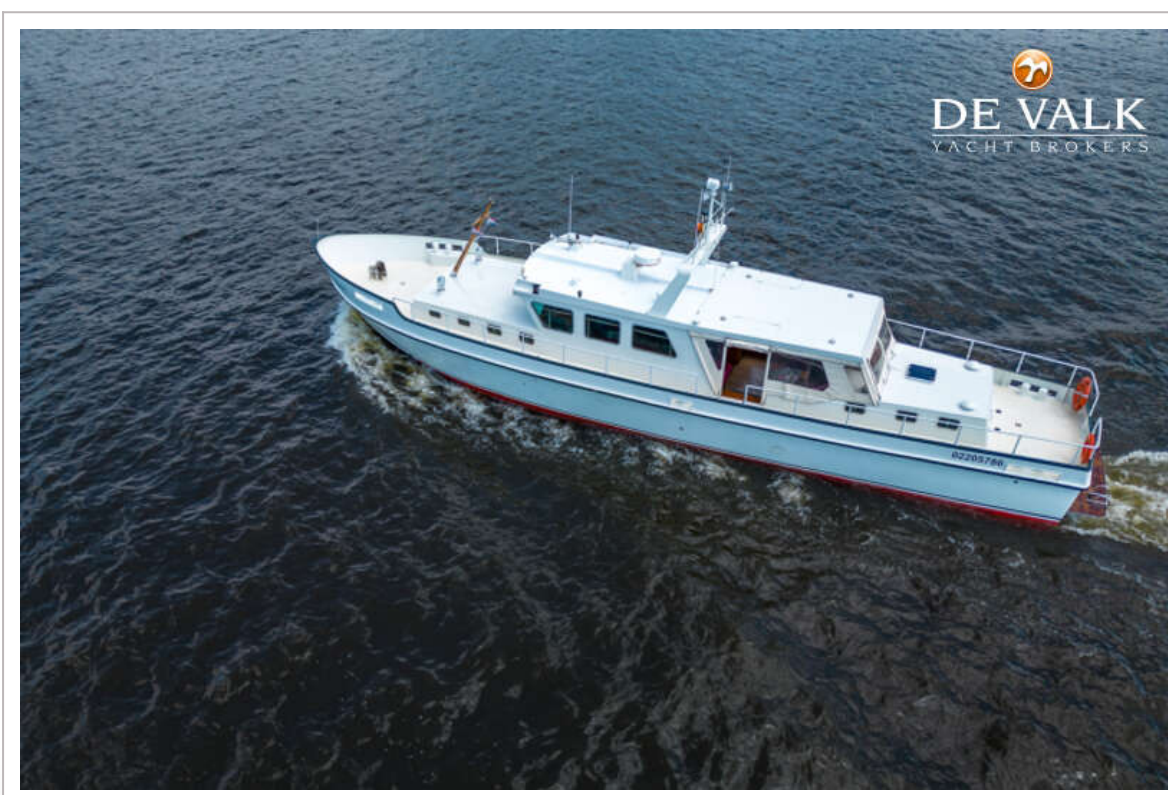
HOUSEBOAT MS COMPAGNON



HOUSEBOAT MS COMPAGNON



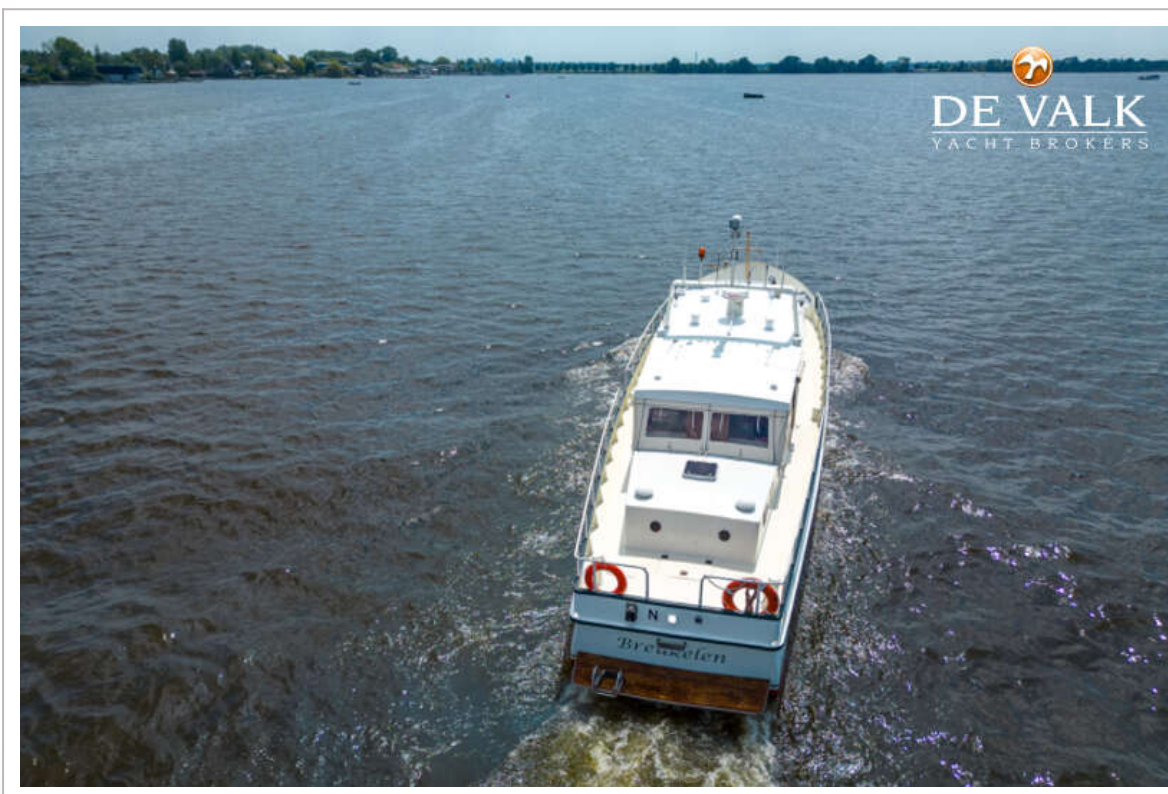
HOUSEBOAT MS COMPAGNON



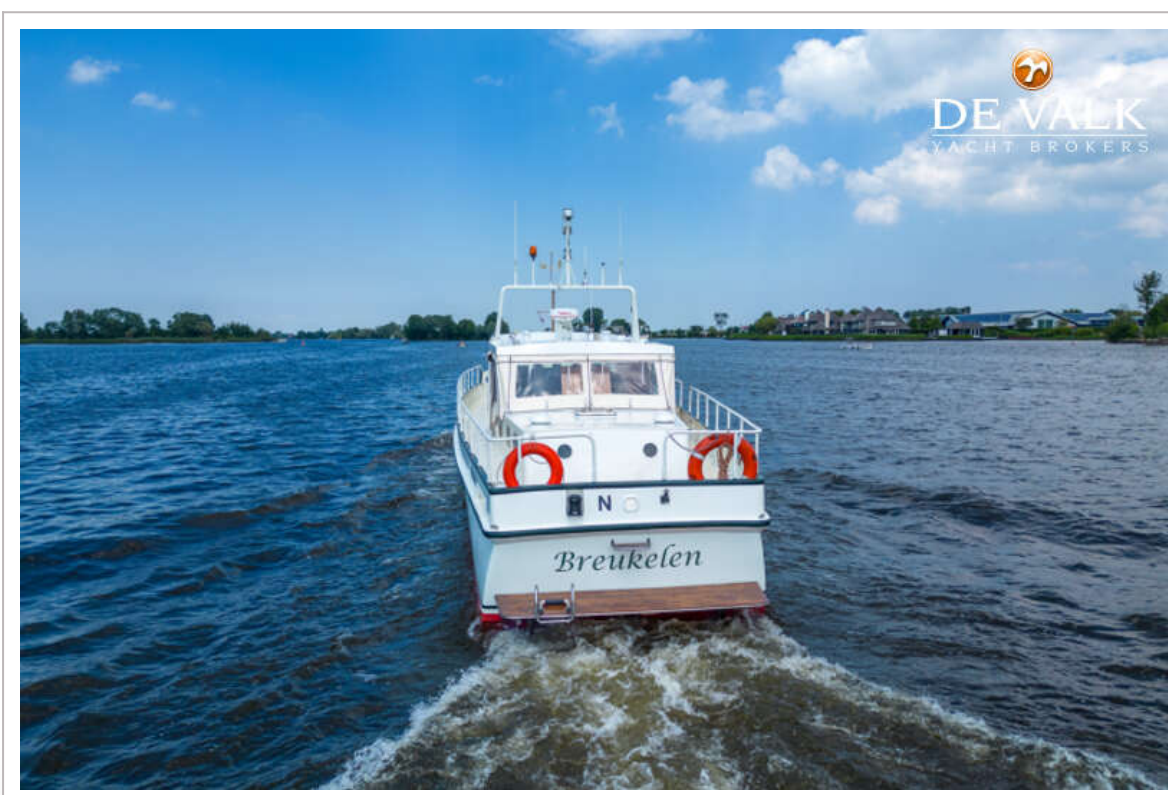
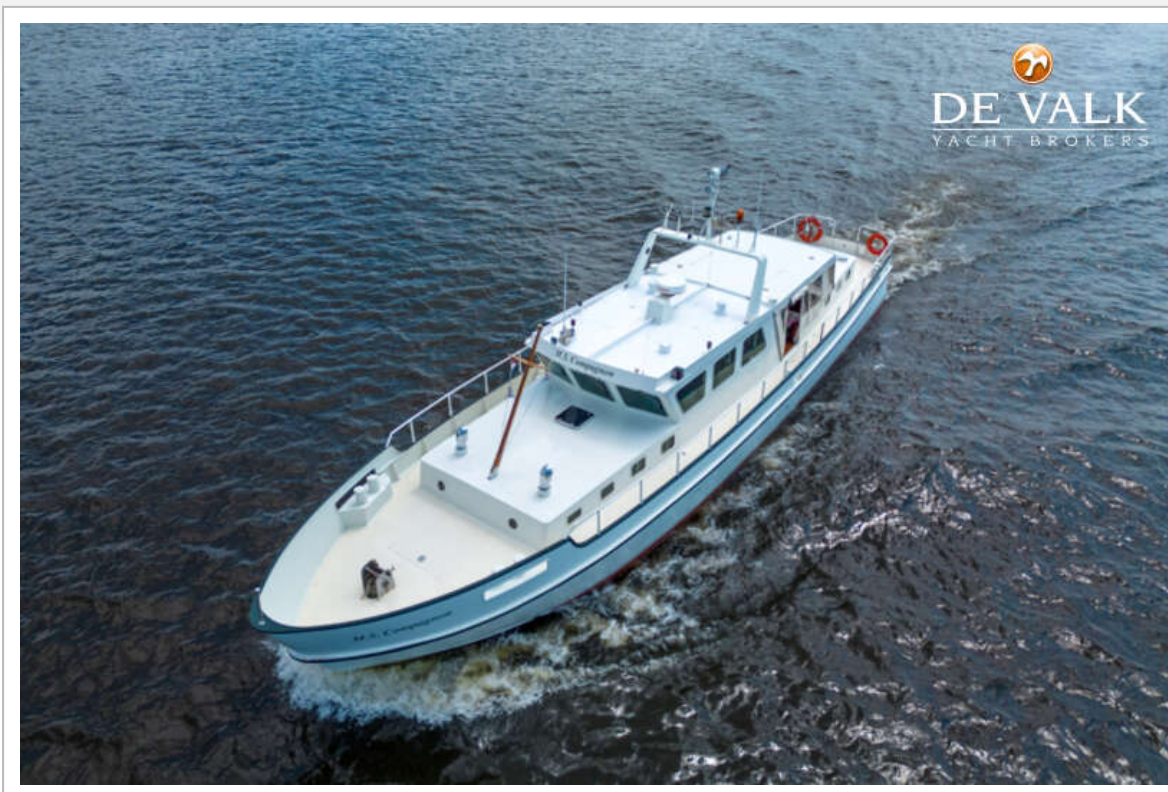
HOUSEBOAT MS COMPAGNON



HOUSEBOAT MS COMPAGNON



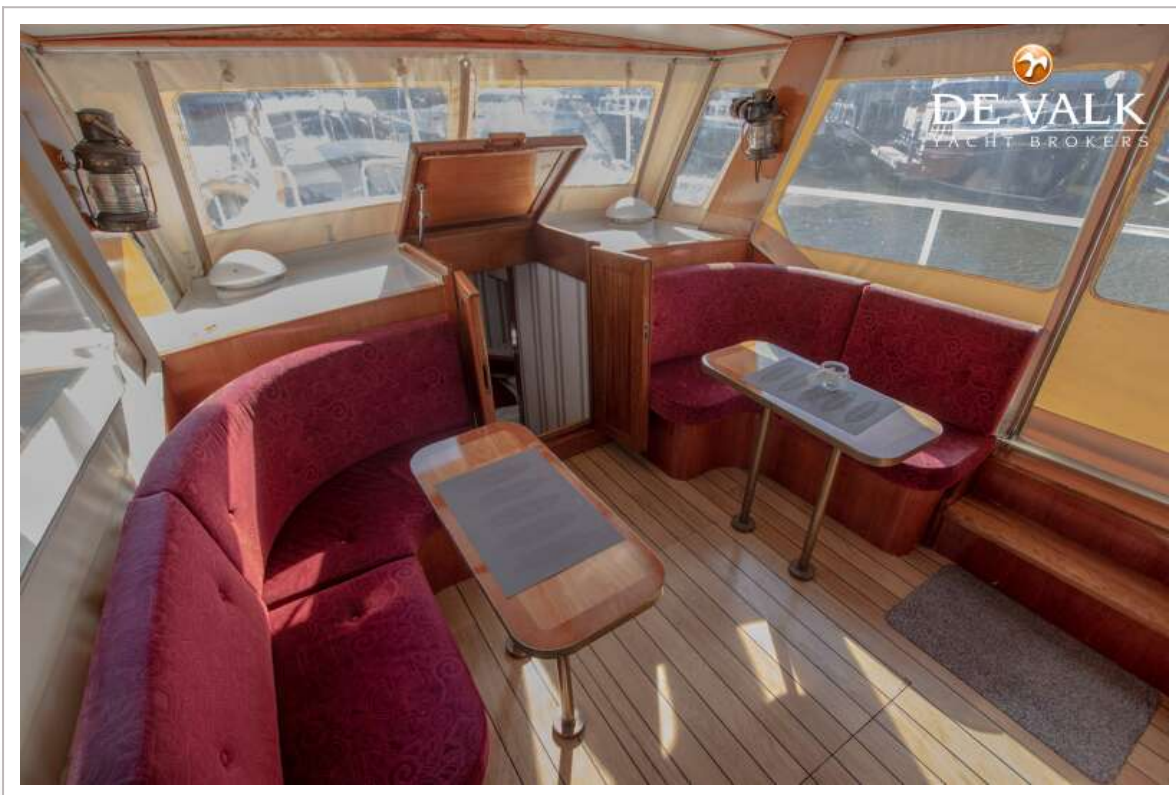
HOUSEBOAT MS COMPAGNON



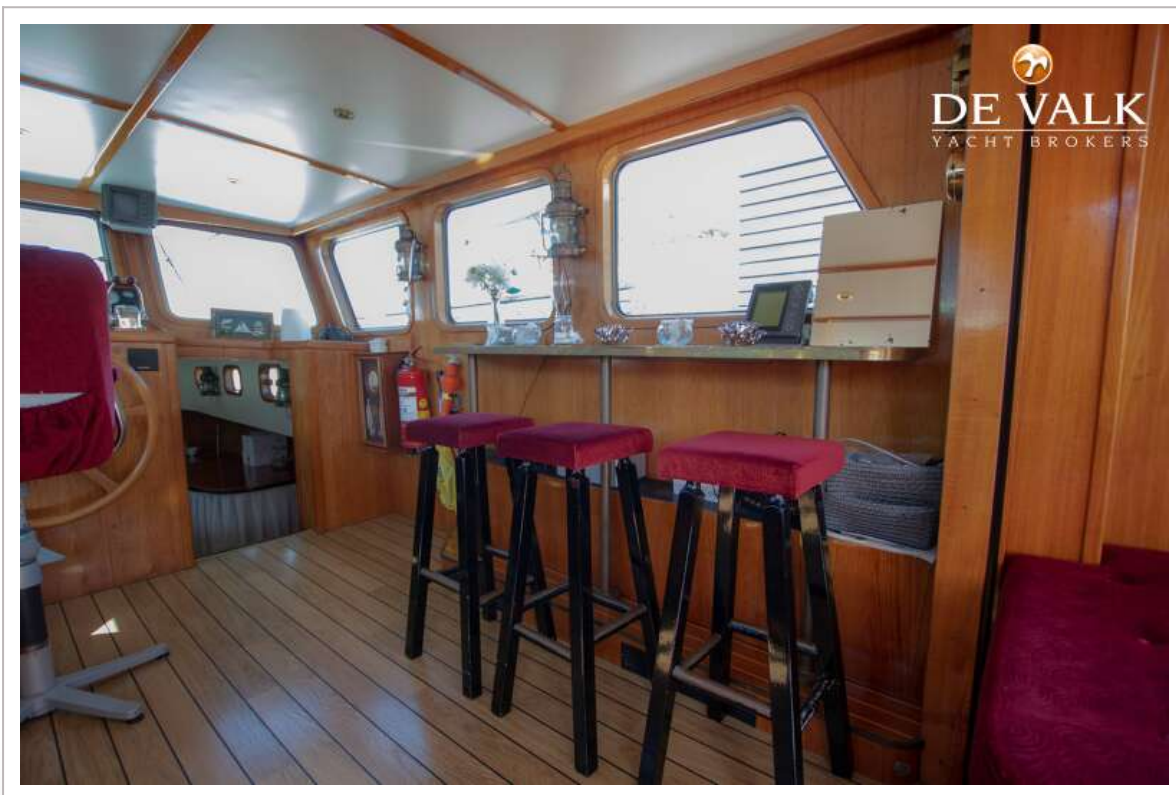
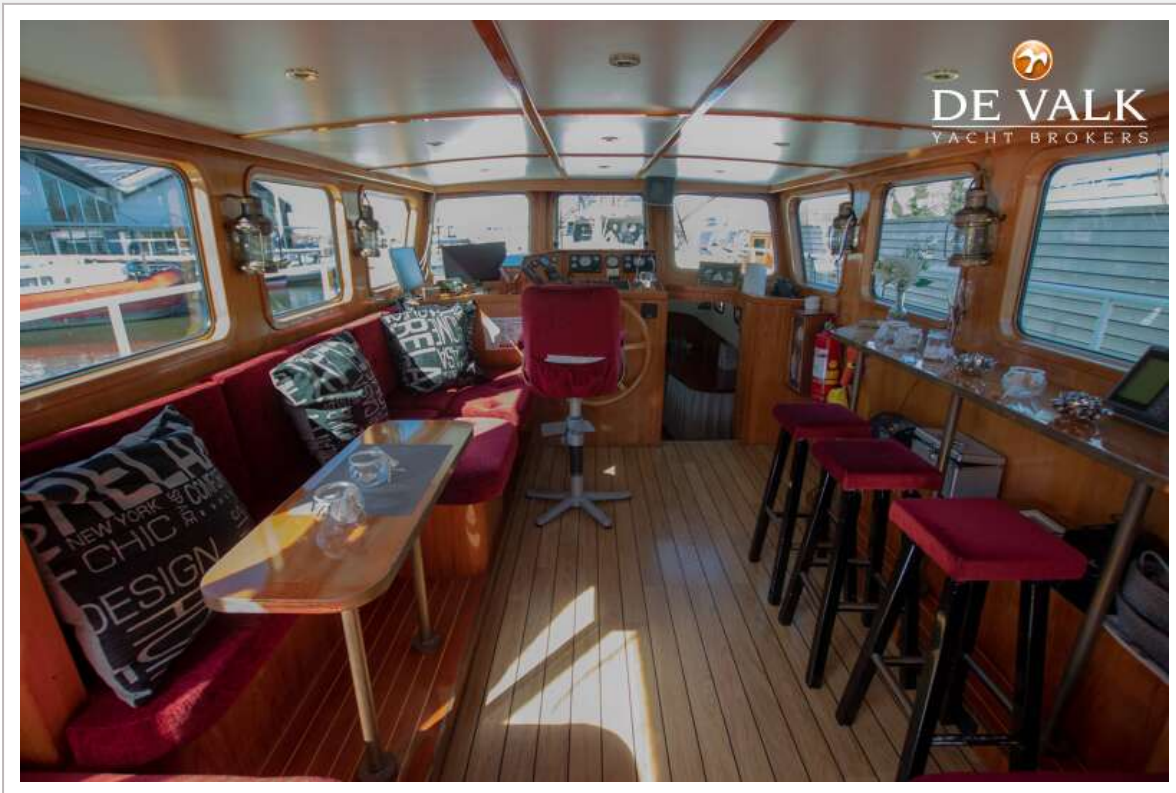
HOUSEBOAT MS COMPAGNON



HOUSEBOAT MS COMPAGNON



HOUSEBOAT MS COMPAGNON



HOUSEBOAT MS COMPAGNON



HOUSEBOAT MS COMPAGNON



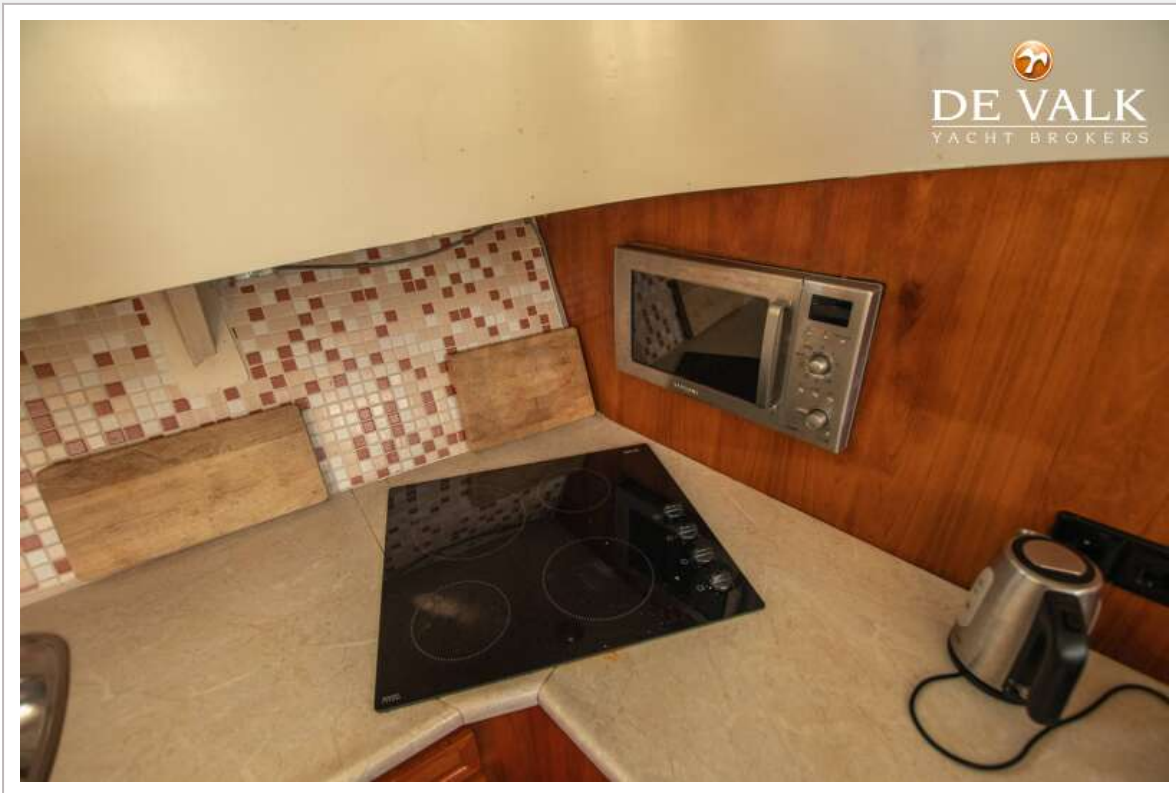
HOUSEBOAT MS COMPAGNON



HOUSEBOAT MS COMPAGNON



HOUSEBOAT MS COMPAGNON



HOUSEBOAT MS COMPAGNON



HOUSEBOAT MS COMPAGNON

