



DE VALK  
YACHT BROKERS



## WAUQUIEZ AMPHITRITE 43



DE VALK  
YACHT BROKERS

# WAUQUIEZ AMPHITRITE 43

## BROKER'S COMMENTS

Step aboard this Wauquiez Amphitrite 43, a timeless vessel Designed by Holman & Pye, this robust and reliable blue water cruiser offers everything a serious sailor is looking for: comfort, safety and style. With her solid construction, well thought-out layout and seaworthy sailing characteristics, this yacht is ideal for long voyages or comfortable living on board. This Wauquiez Amphitrite 43 features a spacious cockpit, 2 cabins and 2 bathrooms and a cozy saloon, making her perfect for families or adventurous couples. This vessel can be visited by appointment in Zeeland.

*Joris van de Rijt*

## SPECIFICATIONS

<b>Dimensions</b>	13.00 x 4.10 x 1.80 (m)	<b>Builder</b>	Wauquiez
<b>Built</b>	1978	<b>Cabins</b>	2
<b>Material</b>	GRP	<b>Berths</b>	9
<b>Engine(s)</b>	1 x Perkins 4108 diesel	<b>Hp/Kw</b>	50.00 (hp), 36.80 (kw)
<b>Asking price</b>	€ 72.500 (VAT Exempt)	<b>Lying</b>	elsewhere / Not at sales office

## CONTACT

<b>Sales office</b>	De Valk Sint Annaland B.V.	<b>Telephone</b>	+31 (0)166 601 000
<b>Address</b>	Koelhuisweg 4 4697 RM Sint Annaland NL	<b>E-mail</b>	sintannaland@devalk.nl

## DISCLAIMER

These particulars are given in good faith as supplied but cannot be guaranteed.



# WAUQUIEZ AMPHITRITE 43

## GENERAL

<b>Model</b>	WAUQUIEZ AMPHITRITE 43
<b>Type</b>	sailing yacht
<b>LOA (m)</b>	13,00
<b>Beam (m)</b>	4,10
<b>Draft (m)</b>	1,80
<b>Air draft (m)</b>	18,40
<b>Headroom (m)</b>	2,10
<b>Year built</b>	1978
<b>Builder</b>	Wauquiez
<b>Country</b>	France
<b>Designer</b>	Holman & Pye
<b>Displacement (t)</b>	13
<b>CE norm</b>	NA
<b>Hull material</b>	GRP
<b>Hull colour</b>	white
<b>Hull shape</b>	S-bilged Semi
<b>Keel type</b>	long keel Semi
<b>Superstructure material</b>	GRP
<b>Deck material</b>	GRP
<b>Deck finish</b>	teak Sanded in 2025
<b>Cockpit deck finish</b>	teak
<b>Antifouling (year)</b>	2025
<b>Dorades</b>	yes
<b>Deckhatch</b>	3 x
<b>Portholes</b>	14 x
<b>Fuel tank (litre)</b>	440
<b>Freshwater tank (litre)</b>	300
<b>Wheel steering</b>	mechanical

## ACCOMMODATION



# WAUQUIEZ AMPHITRITE 43

<b>Cabins</b>	2
<b>Berths</b>	9
<b>Floor</b>	teak and holly
<b>Saloon</b>	yes
<b>Headroom saloon (m)</b>	2,10
<b>Heating</b>	diesel ducted hot air Autoterm 4D in aftercabin (2019)
<b>Aft Cabin</b>	yes
<b>Dinette</b>	yes
<b>Galley</b>	yes
<b>Sink</b>	stainless steel
<b>Cooker</b>	calor gas 3 burner
<b>Oven</b>	yes
<b>Fridge</b>	Frigomatic
<b>Hot water system</b>	geyser on Calor Gas
<b>Water pressure system</b>	electrical
<b>Owners cabin</b>	double bed (after cabin)
<b>Wardrobe</b>	hanging/drawers/shelves
<b>Bathroom</b>	en suite
<b>Toilet</b>	en suite
<b>Toilet system</b>	manual
<b>Wash basin</b>	in the bathroom
<b>Shower</b>	yes
<b>Guest cabin 1</b>	v-bed (front cabin)
<b>Wardrobe</b>	hanging/drawers/shelves
<b>Bathroom</b>	en suite
<b>Toilet</b>	en suite
<b>Toilet system</b>	manual
<b>Wash basin</b>	in the bathroom
<b>Shower</b>	en suite
<b>Extra info</b>	Most of interior lights changed to LED



## MACHINERY

<b>No of engines</b>	1
<b>Make</b>	Perkins
<b>Type</b>	4108
<b>HP</b>	50
<b>kW</b>	36.80
<b>Fuel</b>	diesel
<b>Year of overhaul</b>	2021
<b>Engine hours</b>	209
<b>Engine cooling system</b>	freshwater heat exchanger
<b>Drive</b>	shaft
<b>Engine controls</b>	bowden cable
<b>Gearbox</b>	mechanical
<b>Bowthruster</b>	electric Ameq H7 24 Volt
<b>Propeller type</b>	fixed
<b>Propeller blades</b>	3
<b>Propeller shaft material</b>	stainless steel
<b>Electric bilge pump</b>	Seaflow (2023)
<b>Electrical installation</b>	12V / 24V / 220V
<b>Start battery</b>	1 x
<b>Service battery</b>	3 x Varta LFD 90 (2021)
<b>Bowthruster battery</b>	2 x (2024)
<b>Windlass battery</b>	1 x Varta LFD 90 (2021)
<b>Battery charger</b>	Victron Centaur 12/30 (2025)
<b>Inverter</b>	Ective TSI15 1500W / 3000W (2023)
<b>Shorepower</b>	with cable
<b>Extra info</b>	Engine hours 209 since overhaul in 2021

## NAVIGATION

<b>Compass</b>	On helmposition
<b>Depth sounder</b>	Nasa Clipper



Log	Nasa Clipper
Windset	Nasa Clipper
VHF	Skanti VHF 300
VHF handheld	yes
Autopilot	Not working
Navigation lights	yes

## EQUIPMENT

Sprayhood	Grey (2020)
Cockpit table	yes
Boarding ladder	stainless steel
Transom door	yes
Anchor	CQR Plough
Anchor chain	yes
Windlass	electrical
Capstan	On windlass
Sea railing	wire + stainless steel with teak on after deck
Railing side opening gates	On afterdeck
Lifebuoy	Besto
Fenders	yes
Mooring lines	yes
Fire extinguisher	3 x

## RIGGING

Rigging	ketch
Standing rigging	wire (new frontstay 2021)
Material mast	aluminium
Mainsail	yes
Mainsail cover	yes
Mizzen	yes
Mizzen sailcover	yes



<b>Genoa</b>	45 m2 (2020)
<b>Genoa furler</b>	New 2021 together with new front stay
<b>Spinnaker</b>	yes
<b>Trysail</b>	yes
<b>Stormjib</b>	yes
<b>Reefing System</b>	slabreefing
<b>Boomvang</b>	tackle
<b>Genoa sheetwinches</b>	2 x Lewmar three speed
<b>Halyard winches</b>	On mast
<b>Reefing winch</b>	yes
<b>Multifunctional winches</b>	yes
<b>Spi-pole</b>	aluminium



# WAUQUIEZ AMPHITRITE 43



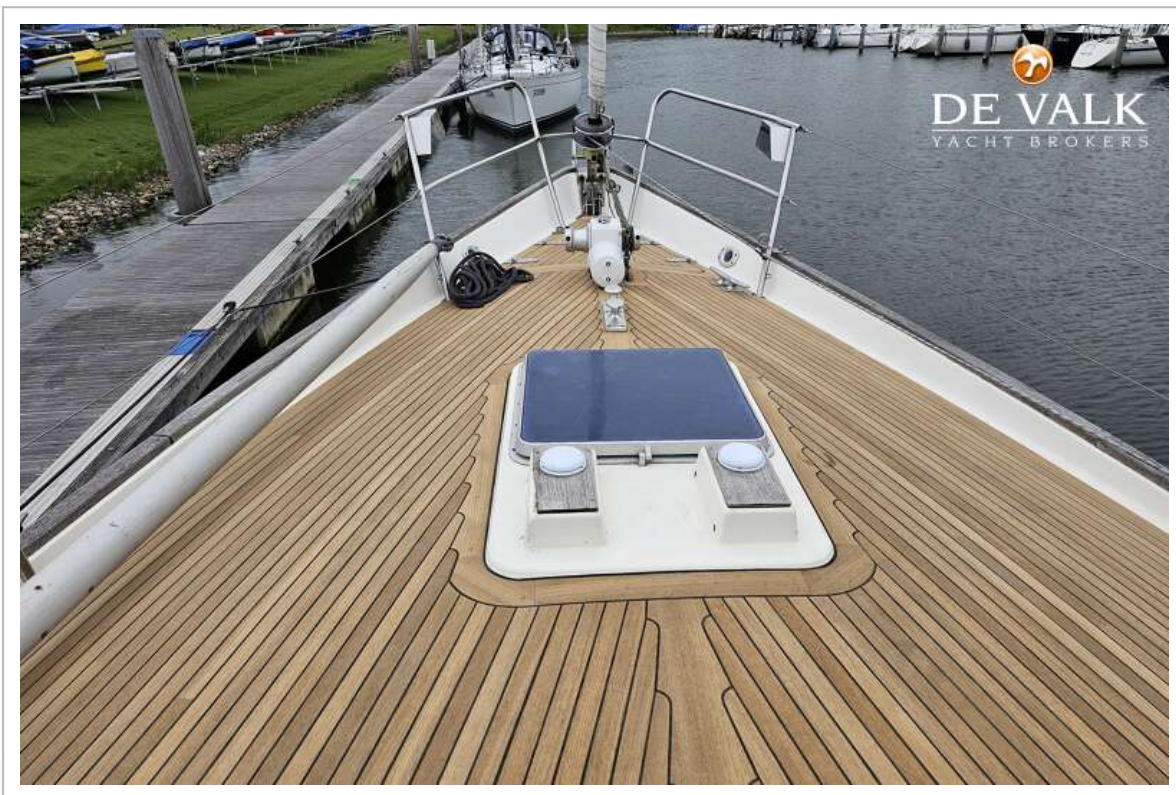


# WAUQUIEZ AMPHITRITE 43





# WAUQUIEZ AMPHITRITE 43





# WAUQUIEZ AMPHITRITE 43



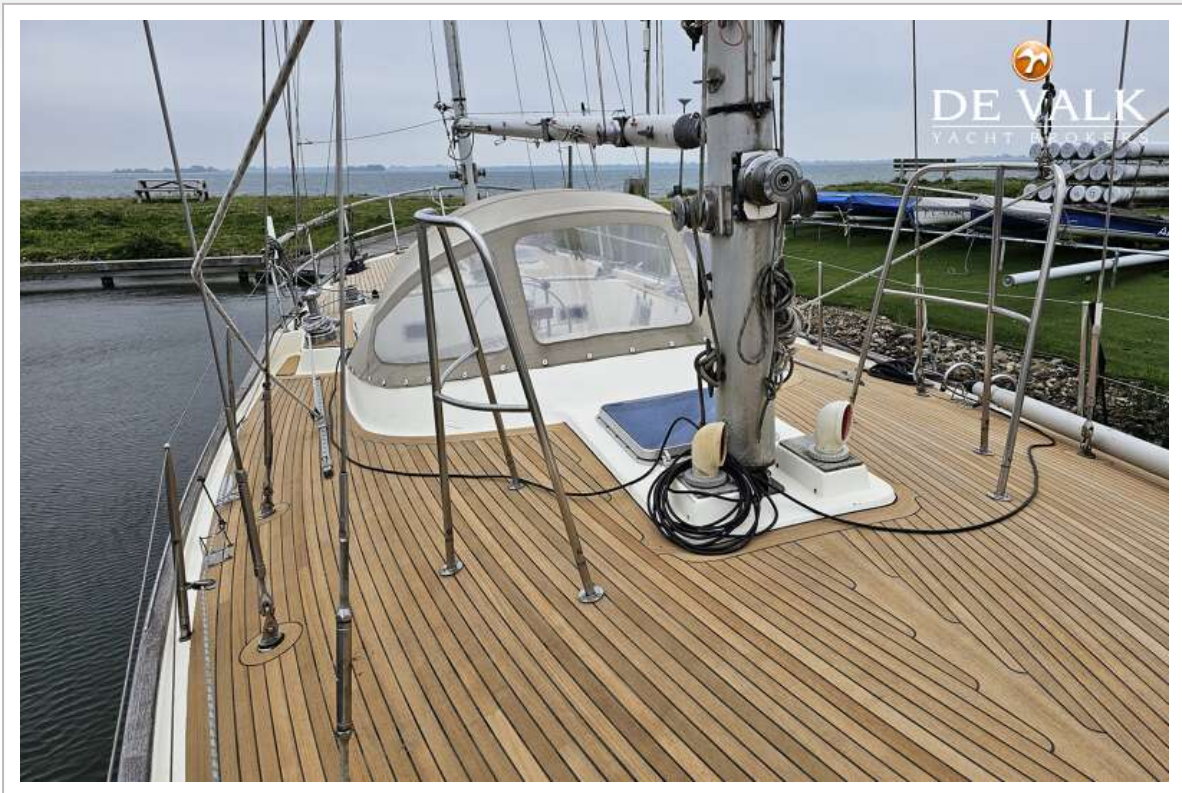


# WAUQUIEZ AMPHITRITE 43





# WAUQUIEZ AMPHITRITE 43



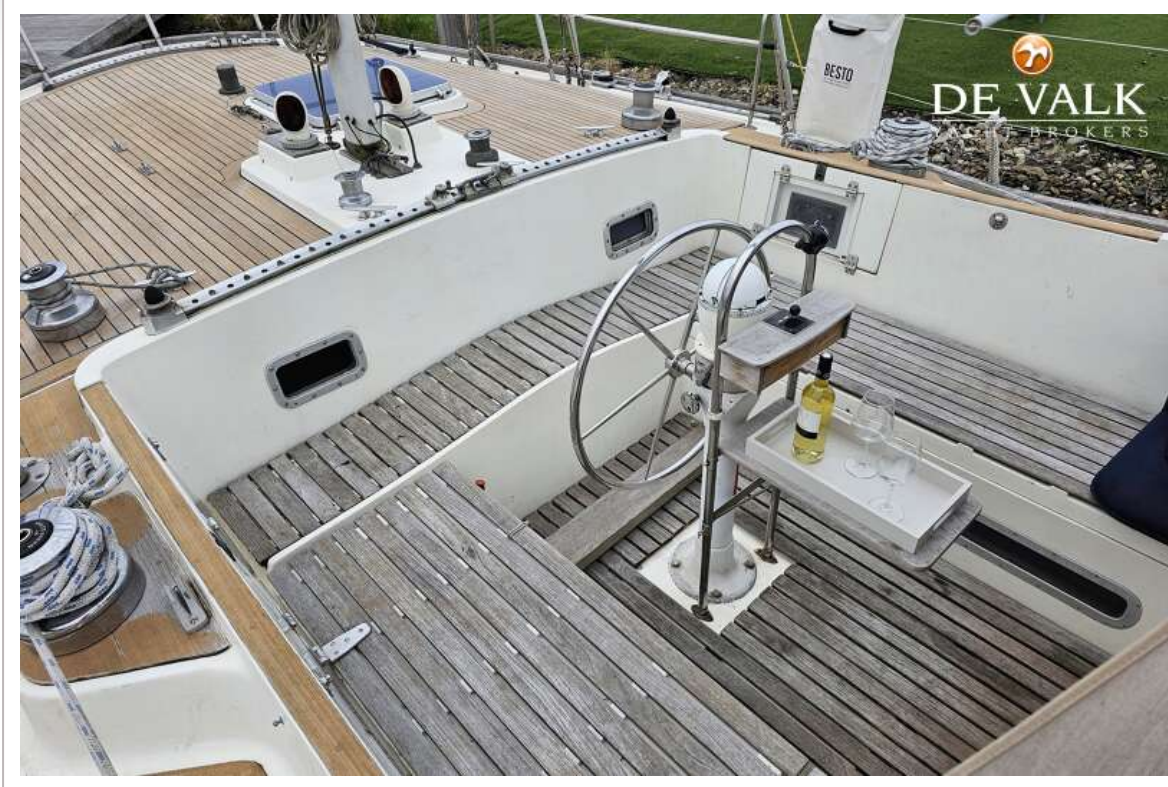


# WAUQUIEZ AMPHITRITE 43



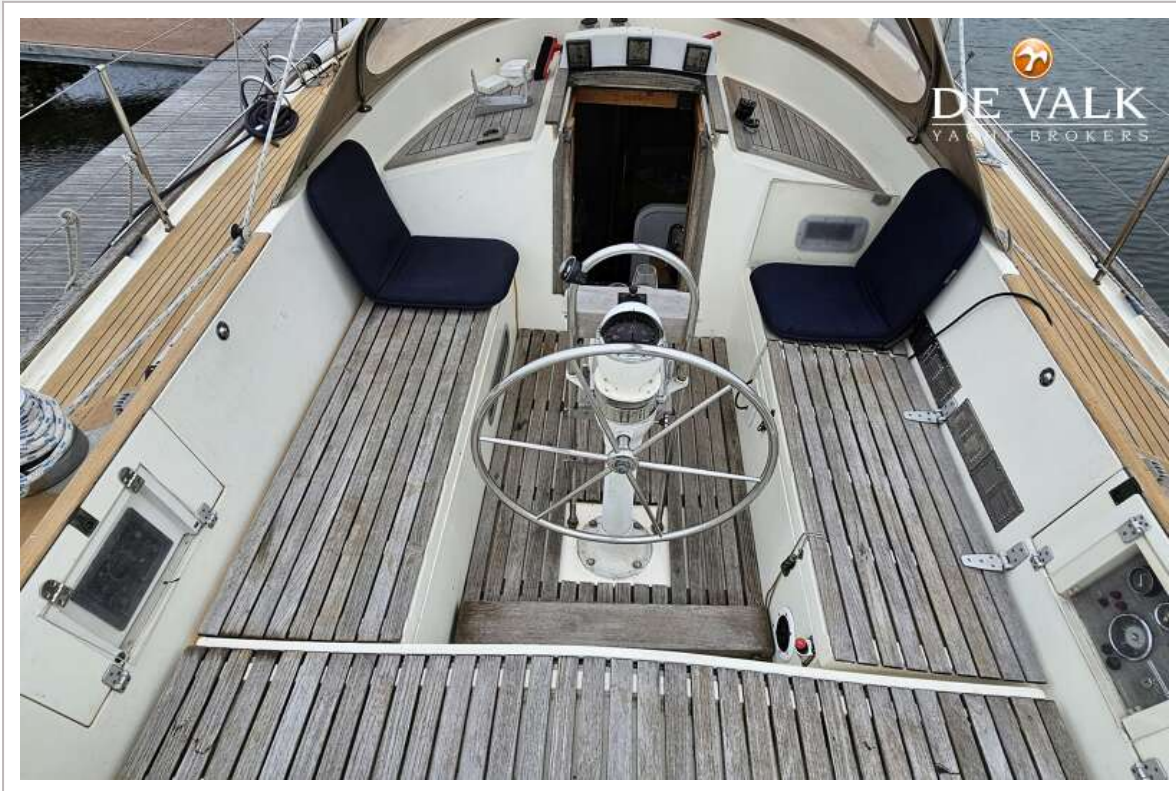


# WAUQUIEZ AMPHITRITE 43





# WAUQUIEZ AMPHITRITE 43



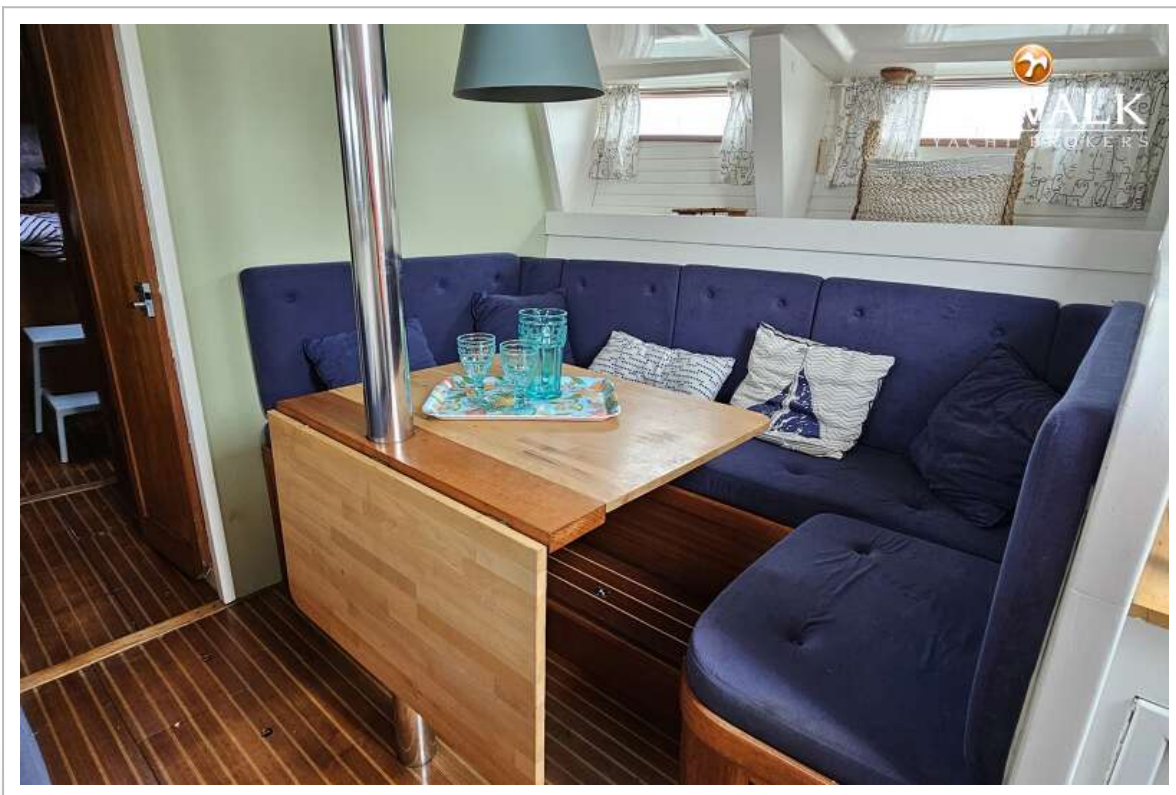


# WAUQUIEZ AMPHITRITE 43





# WAUQUIEZ AMPHITRITE 43

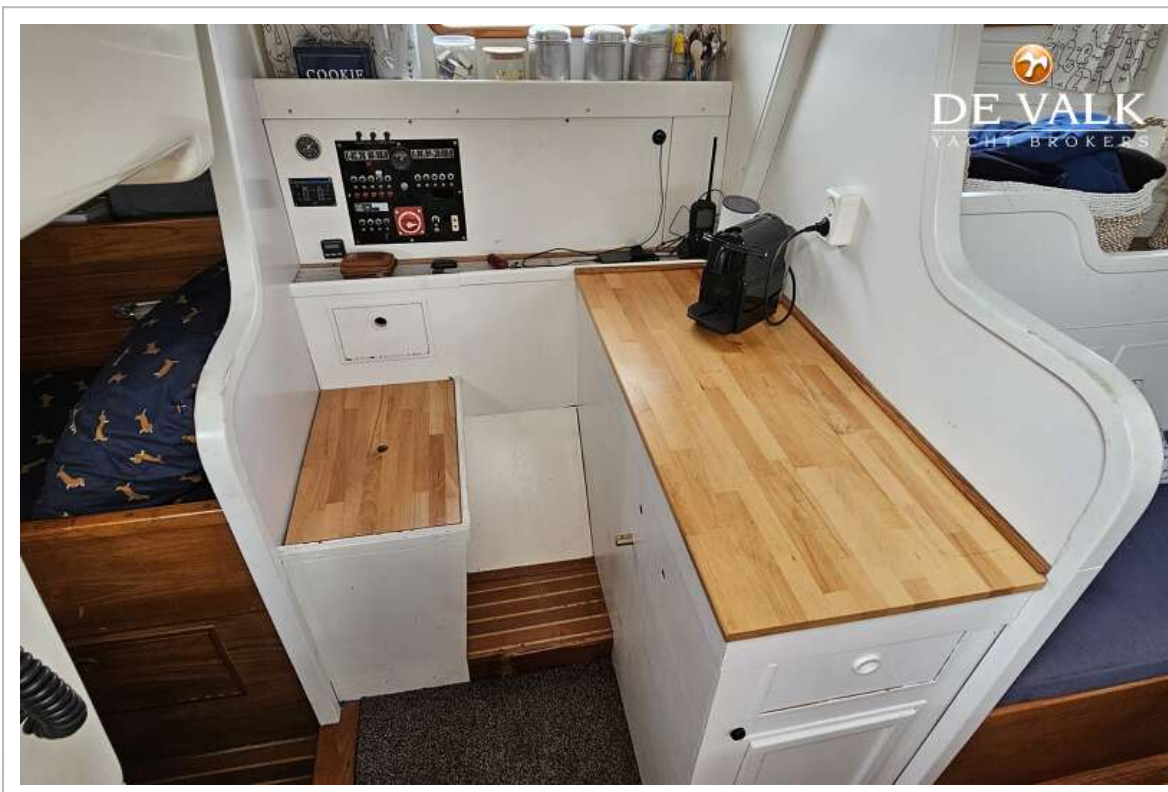


# WAUQUIEZ AMPHITRITE 43





# WAUQUIEZ AMPHITRITE 43

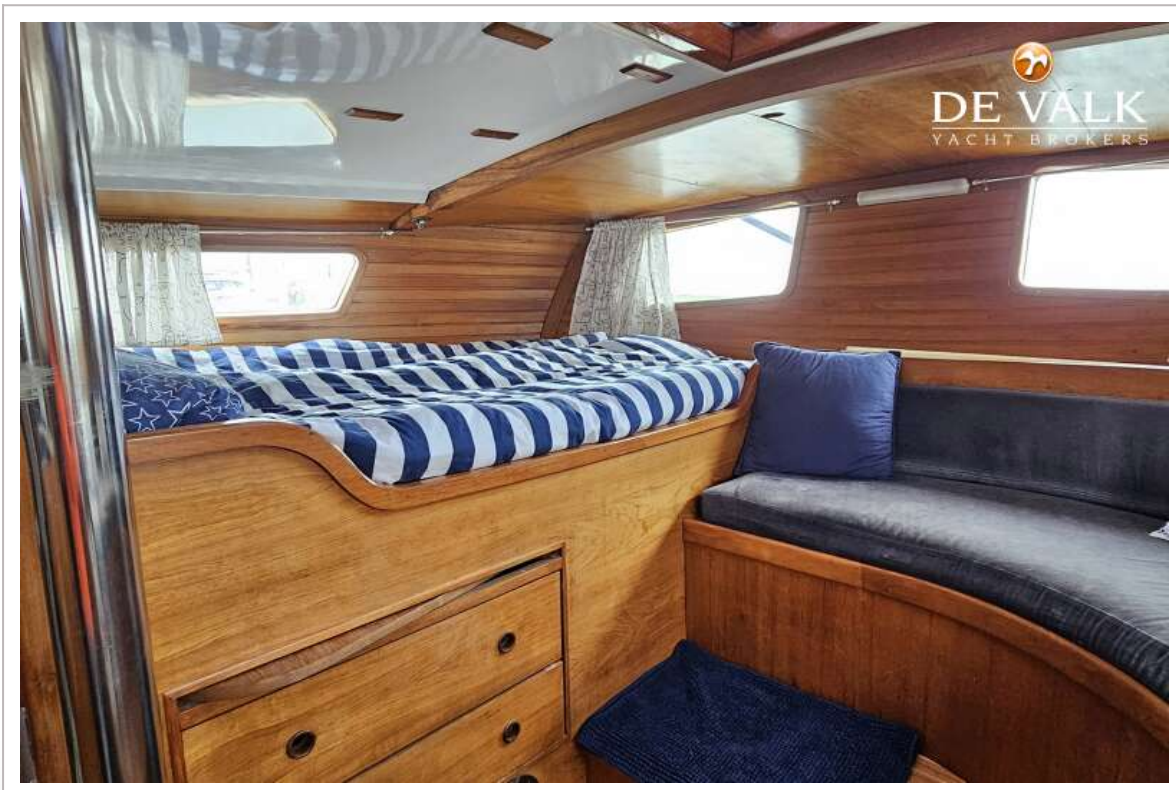
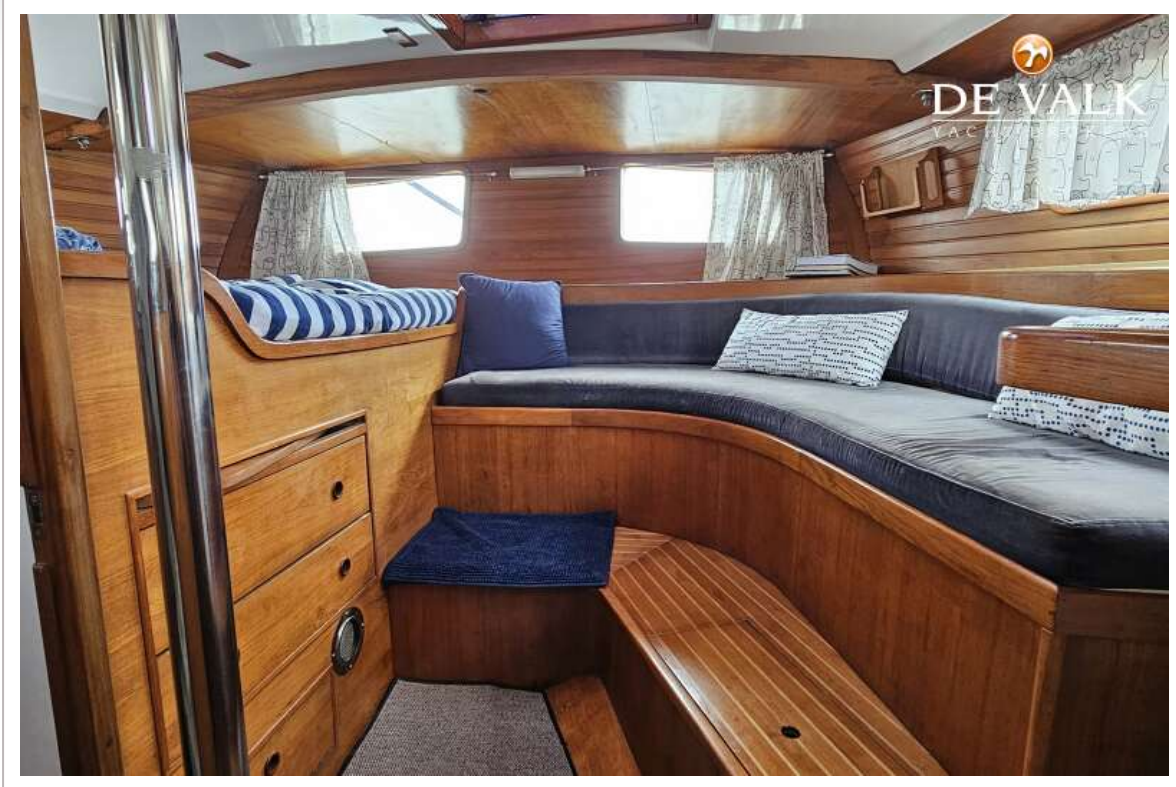


# WAUQUIEZ AMPHITRITE 43





# WAUQUIEZ AMPHITRITE 43

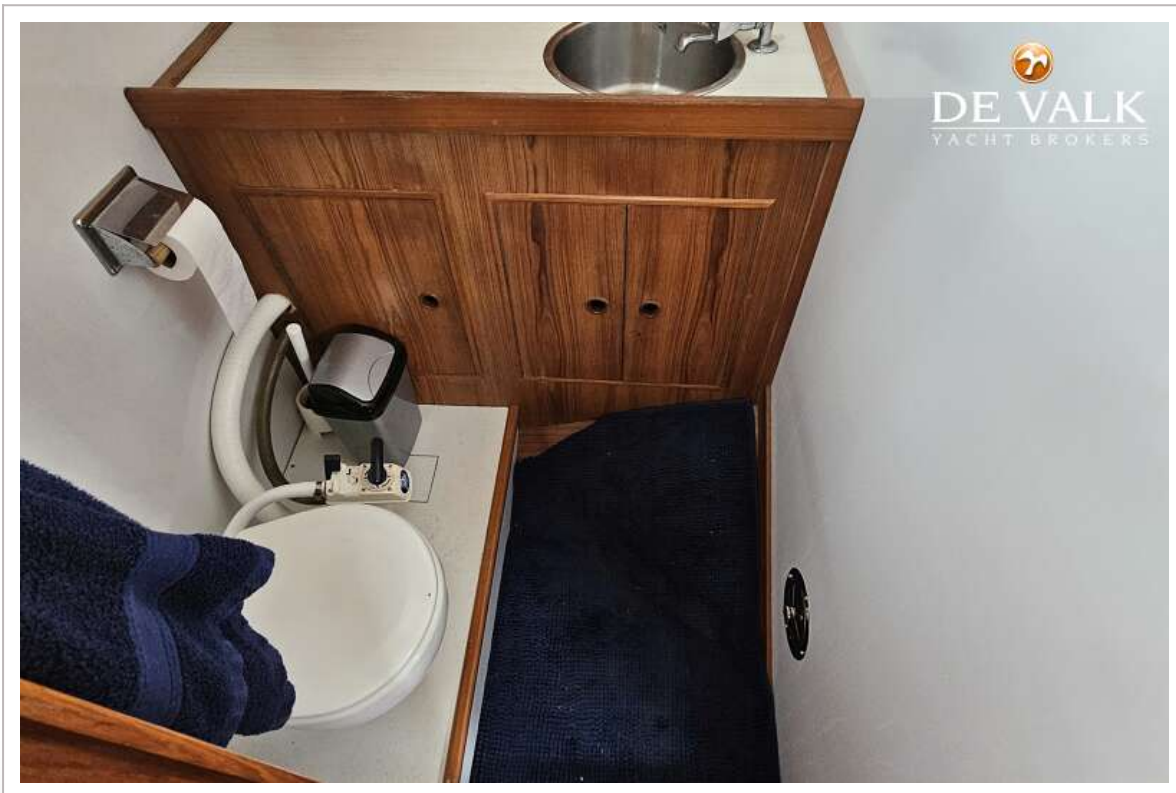
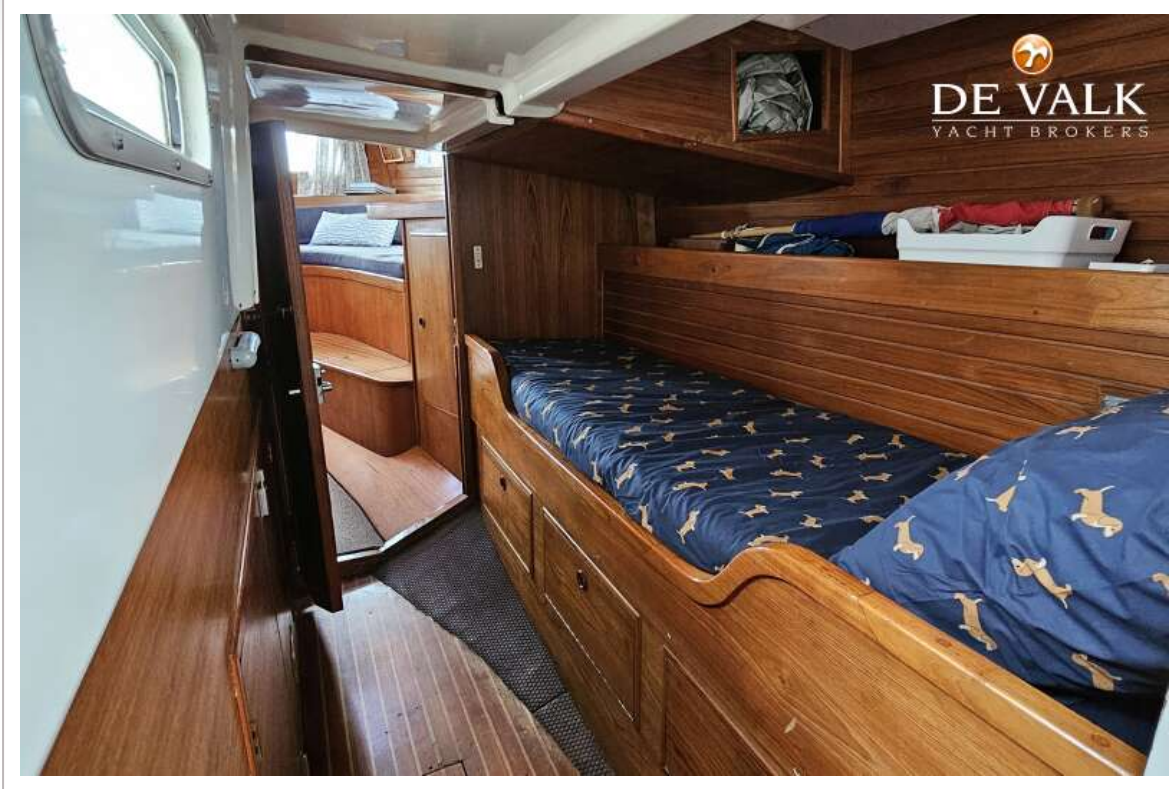




# WAUQUIEZ AMPHITRITE 43

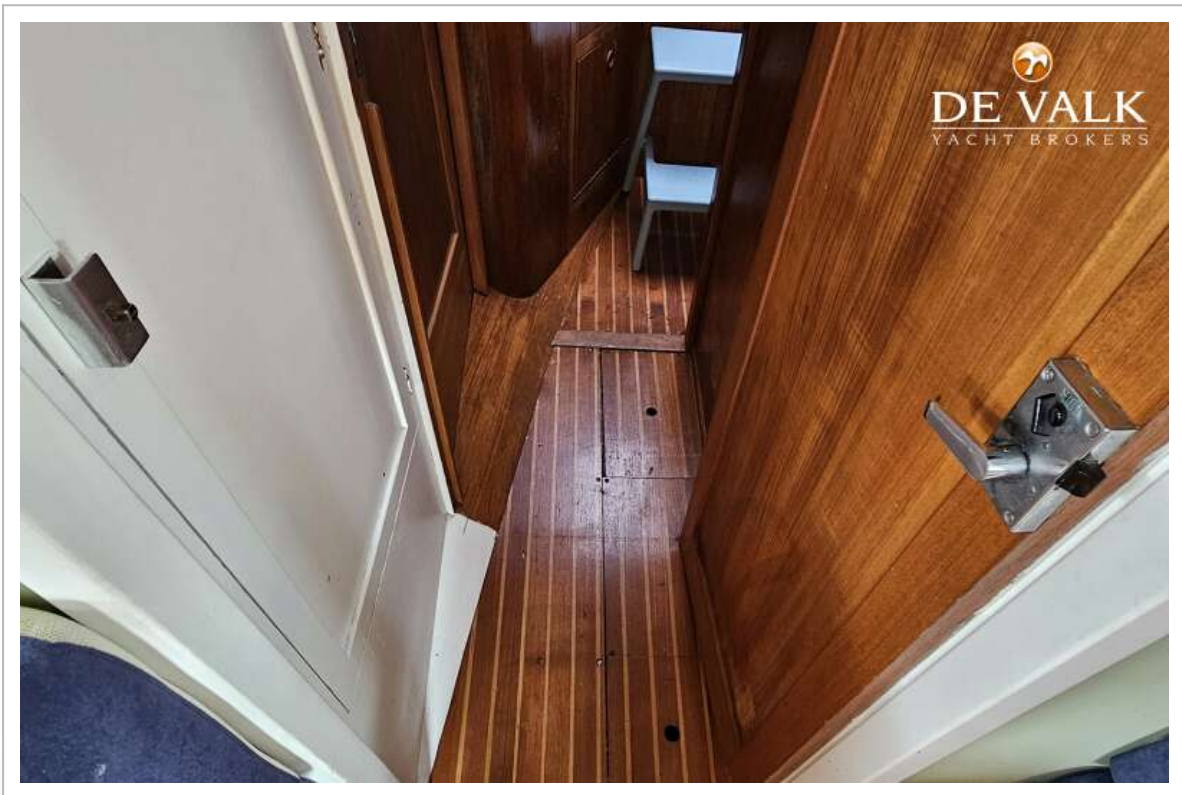
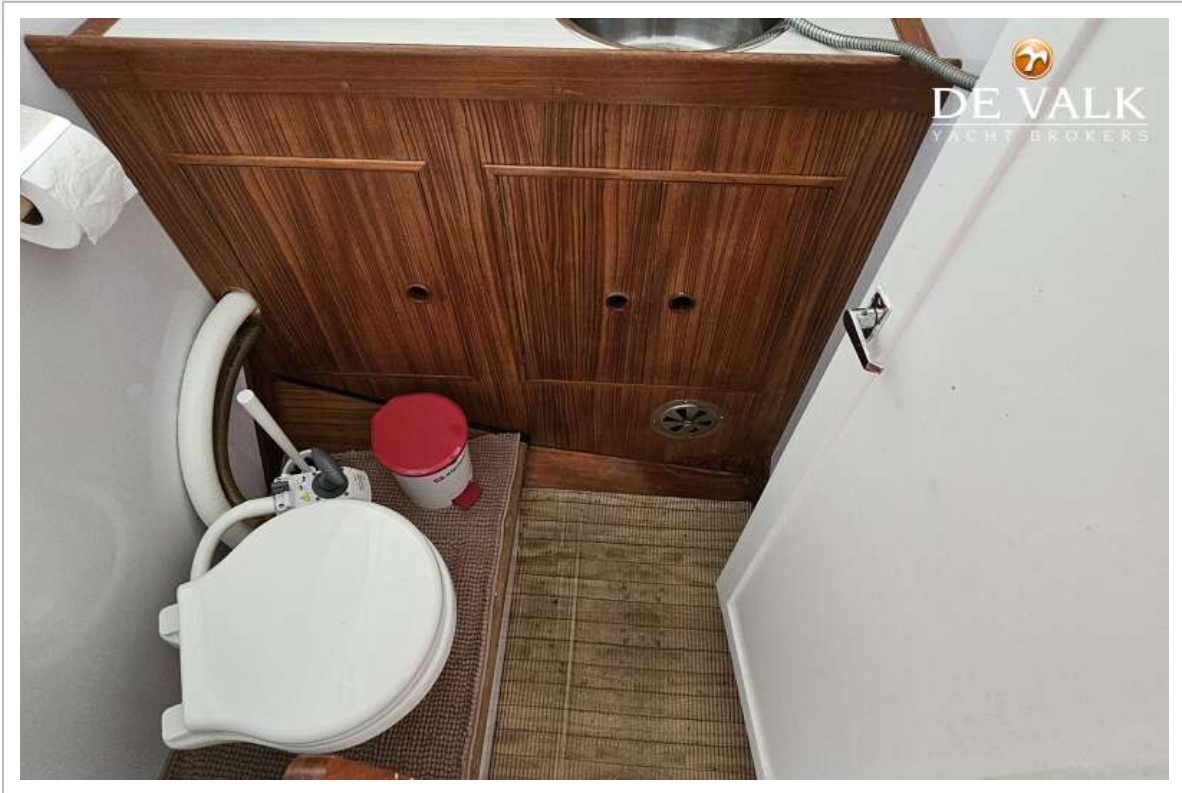


# WAUQUIEZ AMPHITRITE 43

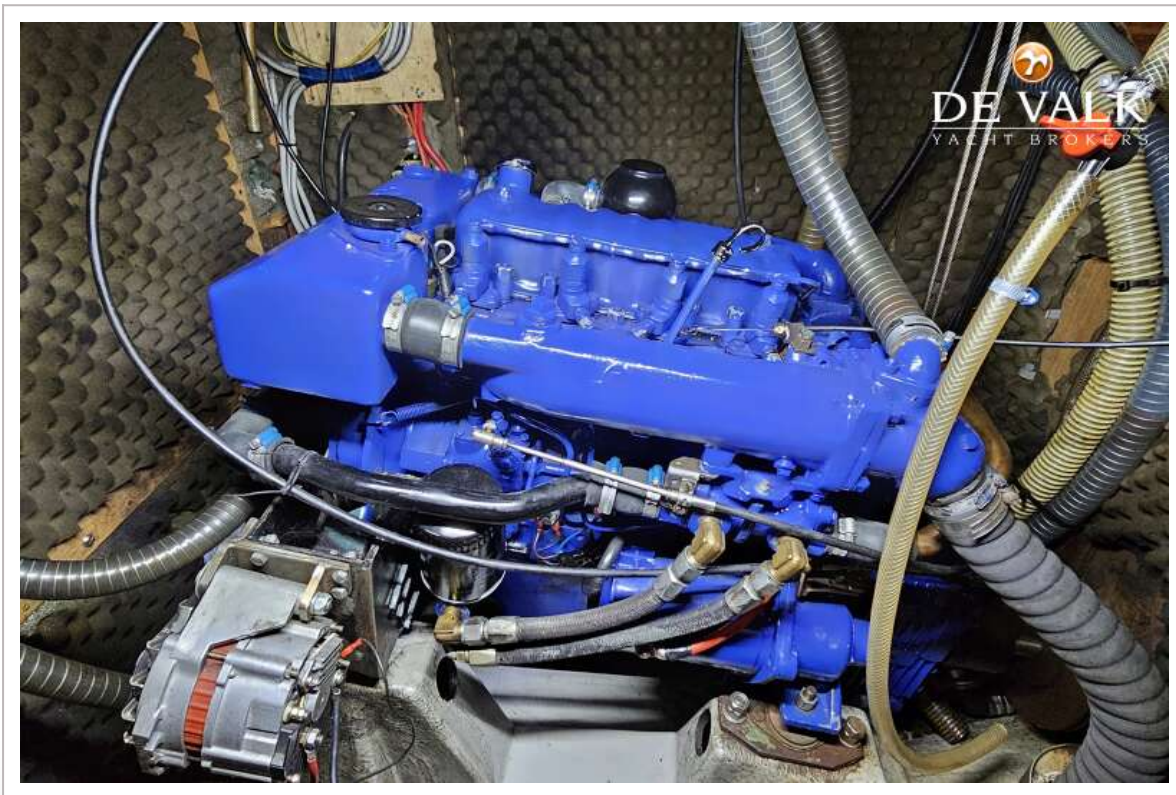
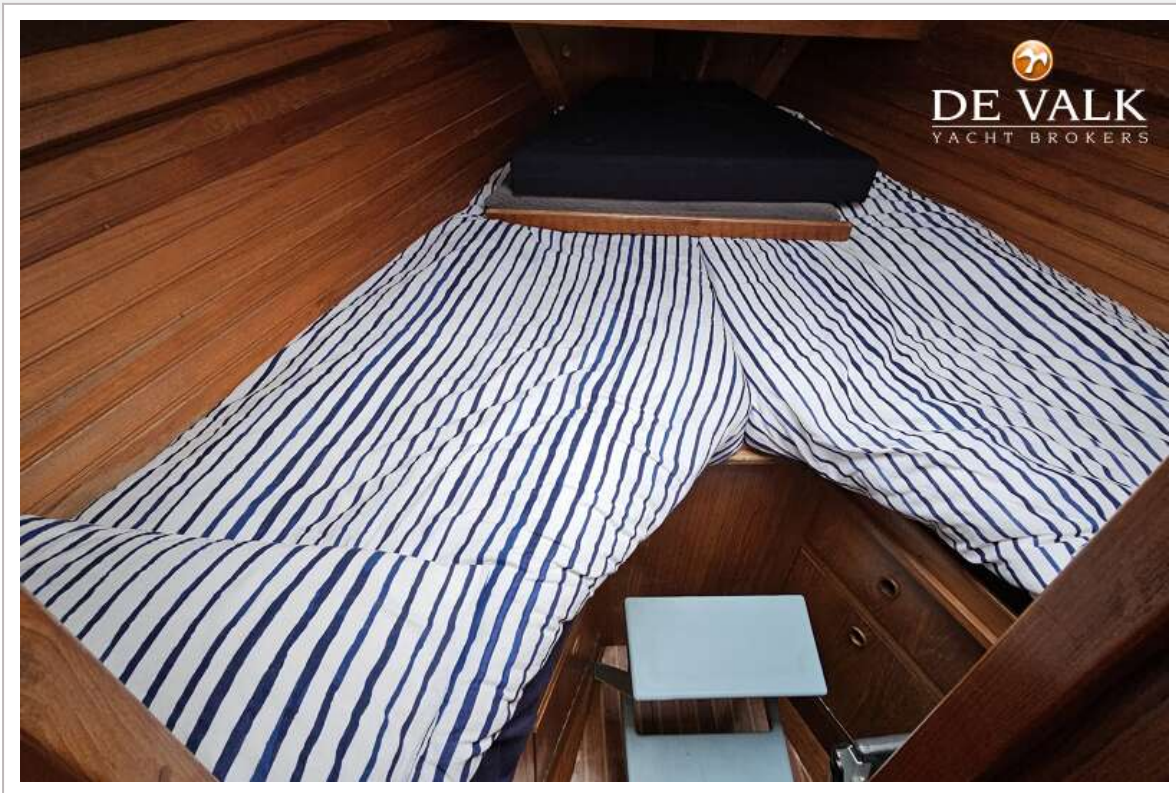




# WAUQUIEZ AMPHITRITE 43









# WAUQUIEZ AMPHITRITE 43

