



## LAGOON 42



## BROKER'S COMMENTS

This Lagoon 42 is most likely the best offer on the market. You will hardly believe this Lagoon 42 is not factory new, because she even smells like new. This superbe maintained owners version is carefully and only little used by her owners. Full service to be done in April 2023. Extendedly equipped with a low rpm Onan generator, airco units in all cabins, 2022 water maker, custom built seat at aft deck, custom stairs with built-in extra fridge. Super NavCom package. Yes, she is not cheap, but every euro is well worth the investment and she is ready to leave when the season starts!

*Willem Koopmans*

## SPECIFICATIONS

<b>Dimensions</b>	12.98 x 7.68 x 1.26 (m)	<b>Builder</b>	Construction Navale Bordeaux
<b>Built</b>	2017	<b>Cabins</b>	3
<b>Material</b>	GRP	<b>Berths</b>	6
<b>Engine(s)</b>	2 x Yanmar 4JH57 SD diesel	<b>Hp/Kw</b>	2 x 57.00 (hp), 41.95 (kw)
<b>Asking price</b>	sold (VAT )	<b>Lying</b>	contact sales office

## CONTACT

<b>Sales office</b>	De Valk Costa Blanca	<b>Telephone</b>	+34 96 50 21 569
<b>Address</b>	Costa Blanca Region 03730 Javea Alicante ES	<b>E-mail</b>	costablanca@devalk.nl

## DISCLAIMER

These particulars are given in good faith as supplied but cannot be guaranteed.



## GENERAL

Model	LAGOON 42
Type	catamaran sailing yacht
LOA (m)	12,98
LWL (m)	12,78
Beam (m)	7,68
Draft (m)	1,26
Air draft (m)	20,60
Headroom (m)	2,05
Year built	2017
Launched	2017
Builder	Construction Navale Bordeaux
Country	France
Designer	Peteghem&Lauriot-prevost/NautaDesign
Displacement (t)	12,2
CE norm	A
Hull material	GRP
Hull colour	white
Hull shape	round-bilged
Bilge keels	yes
Superstructure material	GRP Balsa Sandwich
Deck material	GRP
Deck finish	non-skid moulded in
Superstructure deck finish	non-skid moulded in
Cockpit deck finish	teak
Antifouling (year)	April 2023
Window material	perspex PMMA
Deckhatch	yes
Flybridge	yes
Flybridge cover	Steering position completely covered
Flybridge cockpit cover	Full cockpit tent



Fuel tank (litre)	polyethylene 285
Fuel tank 2 (litre)	polyethylene 285
Level indicator (fuel tank)	yes
Freshwater tank (litre)	polyethylene 300
Level indicator (freshwater)	yes
Blackwater tank (litre)	240, 3x 80
Wheel steering	yes
Emergency tiller	yes
More info on paintwork	Antifouling/anodes April 2023
Extra info	She looks new and even smells like a new yacht
Extra info	Superb quality overall

## ACCOMMODATION

Cabins	3
Berths	6
Layout	Owners version
Floor	parquet
Open cockpit	yes
Aft deck	yes
Saloon	yes
Headroom saloon (m)	2,05
Heating	Via airconditioning (reverse cycle)
Air-conditioning	reverse cycle airco In main cabin, owners side and both guest cabins;
Navigation center	yes
Chart table	yes
Aft Cabin	yes
Dinette	yes
Sliding door to aft deck	Tripple slized
Galley	yes
Countertop	Duropol



Sink	stainless steel
Cooker	calor gas 3 burner
Oven	calor gas Eno
Microwave	Whirlpool
Fridge	2x, Whirlpool & Vitifrigo both with freezer Isotherm outside
Freezer	2 in above fridges
Hot water system	220V/engine/heating 40 ltr
Water pressure system	yes
Manual and/or foot pump	In galley
Owners cabin	French bed Sb side, reserved for owners with ensuite office and bathroom
Bed length (m)	2,10
Wardrobe	hanging and shelves
Bathroom	en suite
Toilet	en suite
Toilet system	manual
Wash basin	in the bathroom
Shower	Spacious separate shower cabin with 2,05 headroom
Guest cabin 1	double bed
Bed length (m)	2.10
Wardrobe	hanging and shelves
Bathroom	en suite
Toilet	en suite
Toilet system	manual
Wash basin	in the bathroom
Shower	en suite In bathroom
Guest cabin 2	double bed Aft cabin
Bed length (m)	2,10
Wardrobe	hanging and shelves
Bathroom	en suite
Toilet	en suite
Toilet system	manual



Wash basin	in the bathroom
Shower	en suite Separate from bathroom
Washing machine/dryer combi	LG ThinQ direct drive 8.5 / 5 kg.

## MACHINERY

No of engines	2
Make	Yanmar
Type	4JH57 SD
HP	57
kW	41.95
Fuel	diesel
Year installed	2017
Maximum speed (kn)	9
Cruising speed (kn)	7
Consumption (l/hr)	6
Engine hours	Approx. 800
Engine cooling system	freshwater heat exchanger
Drive	sail-drive
Saildrive seal	2017
Engine controls	bowden cable
Engine controls	bowden cable
Propeller type	folding
Propeller blades	3
Manual bilge pump	yes
Electric bilge pump	yes
Bilge alarm	yes
Electrical installation	12/228
Generator	Cummins Onan 11.5 kW 1500 rpm
Running hours generator	Approx. 100
Batteries	yes
Start battery	2x 110 Amp



Service battery	4x 140 Amp
Generator battery	1x 110 Amp, new 2022
Windlass battery	yes
Battery monitor	yes
Battery charger	Cristec automatic, YPower 12V/25A
Inverter	2000 Watt
Solar panel	yes
Shorepower	Double
Watermaker	60 ltr. Aqua Base ESW 601, new 2022

## NAVIGATION

Compass	yes
Electric compass	On autopilot
Multi control display	2x B&G
Depth sounder	yes
Depth sounder/log	yes
Windset	yes
VHF	B&G V50
VHF handheld	Cobra
Autopilot	B&G separate control panel
Rudder angle indicator	On multi display
Radar	B&G
GPS	B&G
Radar/plotter	yes
Radar/GPS/plotter	2 x B&G Zeus 12 inch inside and outside
AIS transponder	Navico
EPIRB	Battery, maybe in need of date check
Navigation lights	yes

## EQUIPMENT

Cockpit cover	yes
---------------	-----



Bimini	yes
Sun awning	yes
Cockpit cushions	Look at the custom made aft seats section!
Cockpit table	Teak
Cockpit chairs	yes
Bathing platform	yes
Boarding ladder	yes
Gangway	yes
Deck shower	Warm & cold water
Anchor	Rocna 32 kg
Anchor chain	60 mtr, guided to locker on custom built stainless steel frame
Windlass	electrical Quick
Dinghy	Highfield Classic 340, type bow locker, Hypalon tubes
Outboard	Honda 20 hp
Outboard support	yes
Davits	Solid designed launch system, easy handling
Sea railing	yes
Grab rail (superstructure)	yes
Life raft	container Transocean
Life raft (pers)	6
Last life raft survey	Needs check
Radar reflector	yes
Fenders	yes
Mooring lines	yes
TV	yes
Radio-cd player	Fusion MS V 750
Cockpit speakers	yes
Speakers in cabin	yes
Fire extinguisher	yes

## RIGGING





<b>Rigging</b>	fractional
<b>Standing rigging</b>	wire
<b>Material mast</b>	aluminium
<b>Spreaders</b>	yes
<b>Battcars</b>	yes
<b>Fully battened mainsail</b>	In lazy bag
<b>Genoa</b>	yes
<b>Genoa furler</b>	yes
<b>Code Zero</b>	yes
<b>Reefing System</b>	quick-one-line-reefing
<b>Boomvang</b>	gasspring
<b>Primary sheet winch</b>	Harken 46 ST two speed electric
<b>Secondary sheet winch</b>	Harken 46 ST two speed electric
<b>Halyard winches</b>	Harken 2 speed
<b>Winchcovers</b>	yes



# LAGOON 42



# LAGOON 42





# LAGOON 42



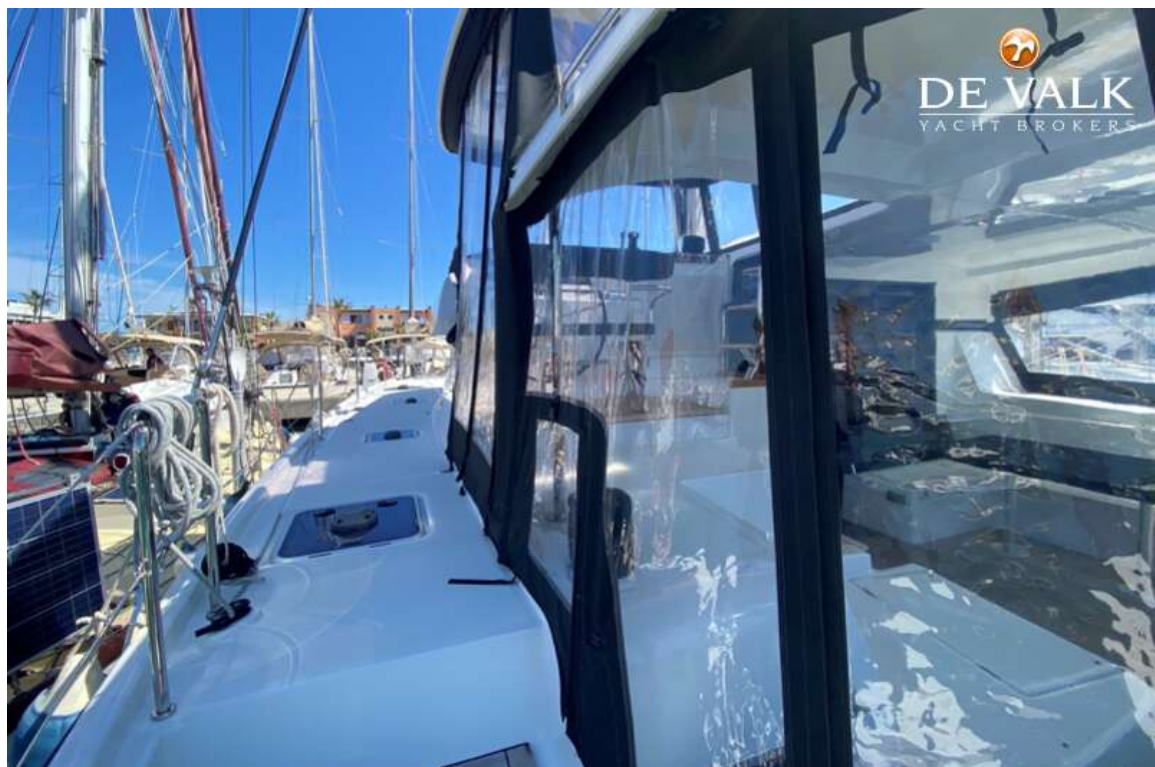
# LAGOON 42







# LAGOON 42



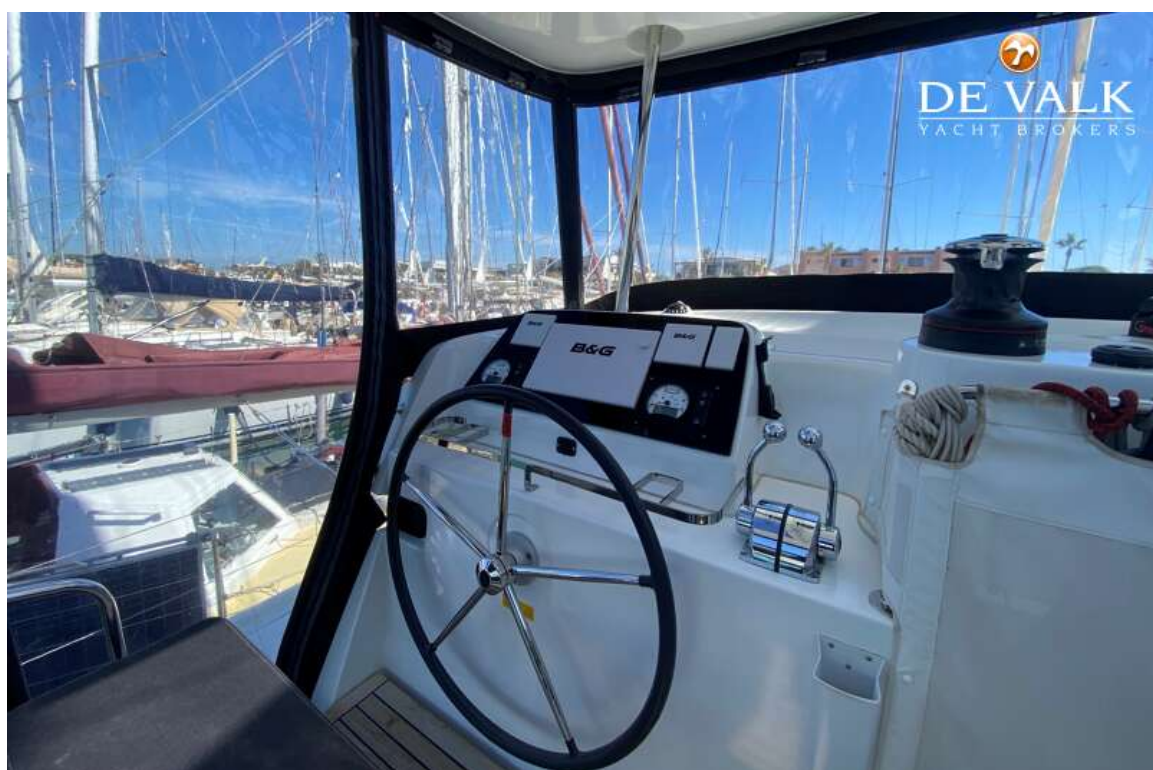


# LAGOON 42

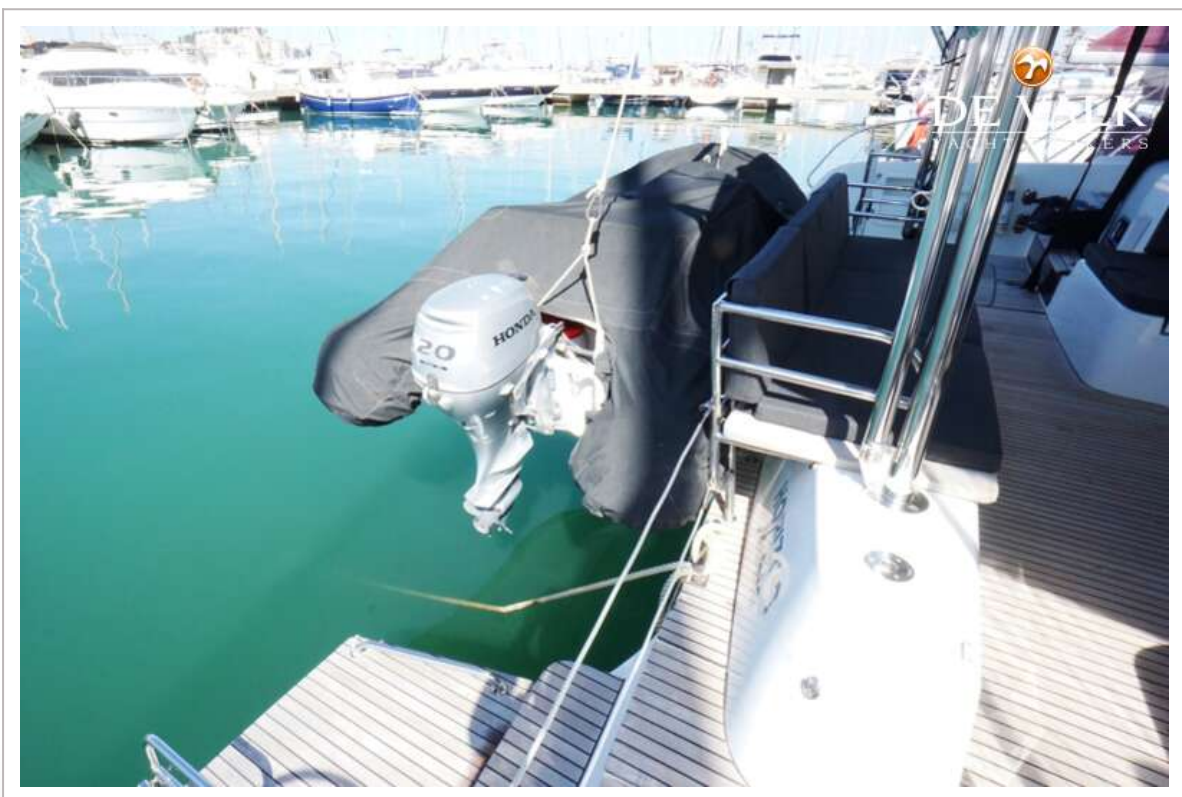




# LAGOON 42

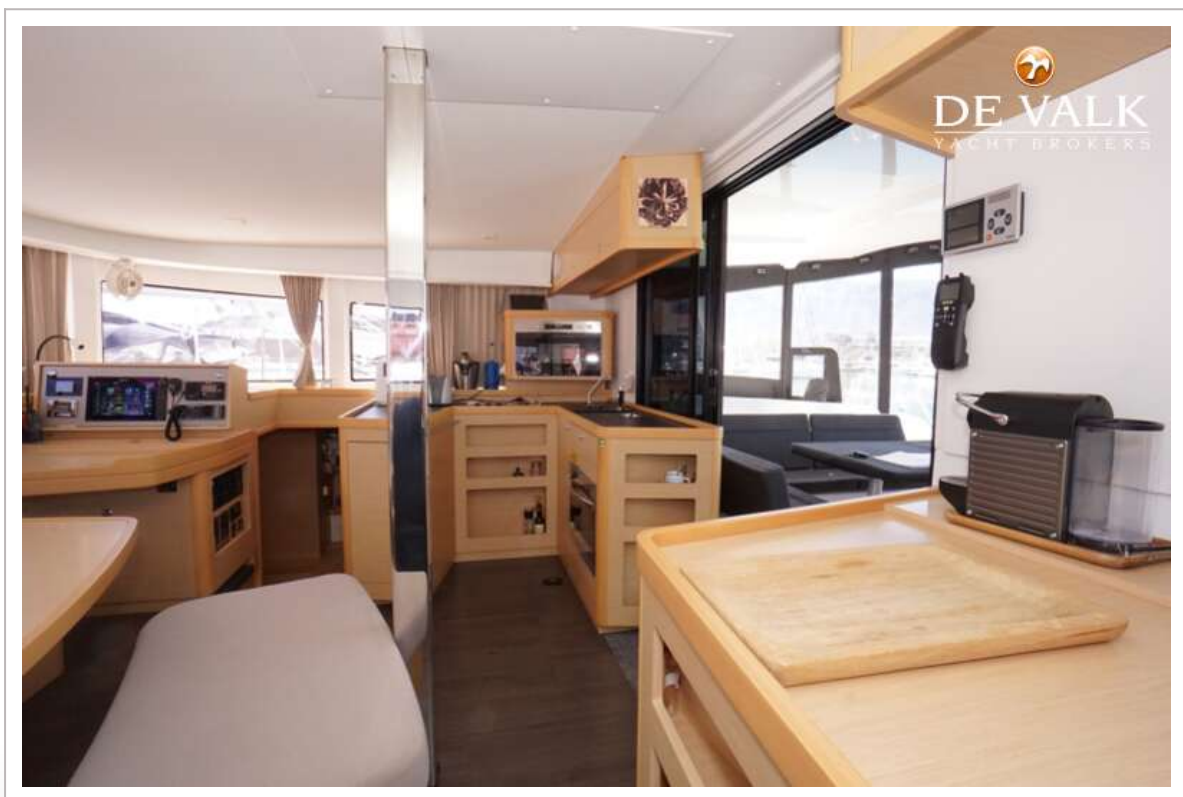
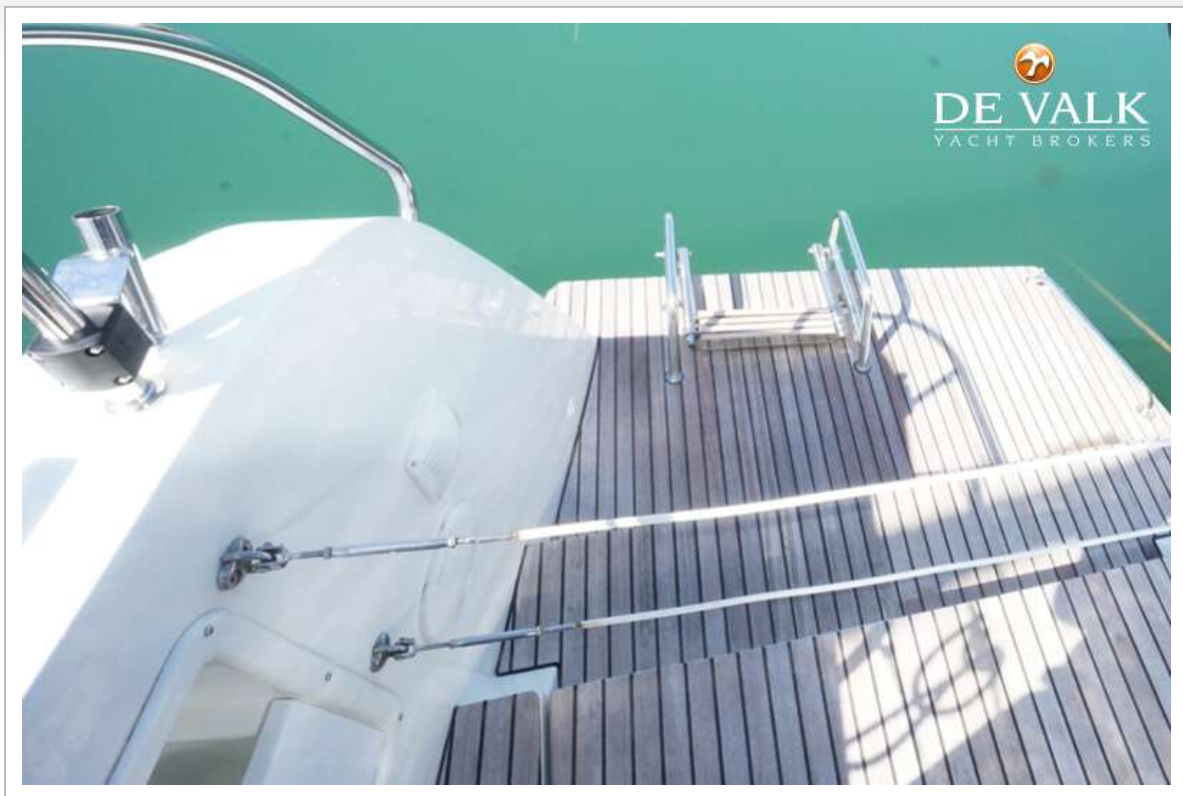


# LAGOON 42

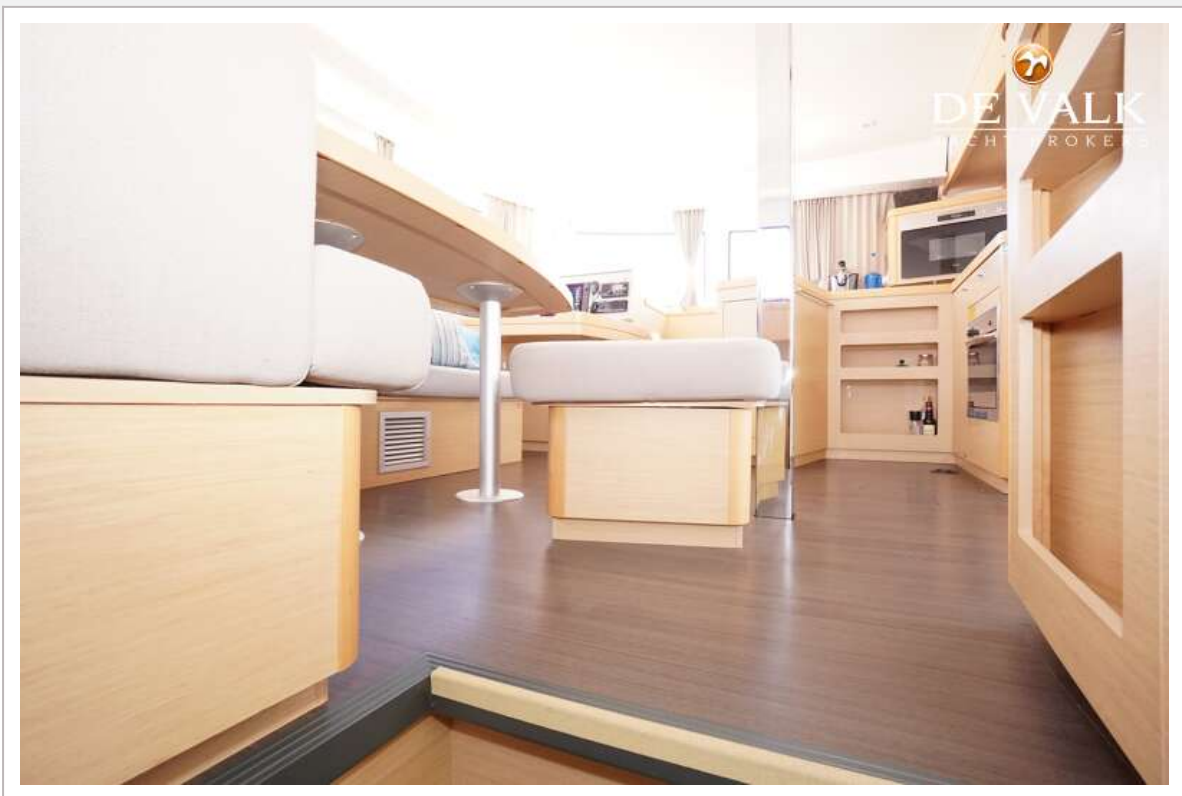




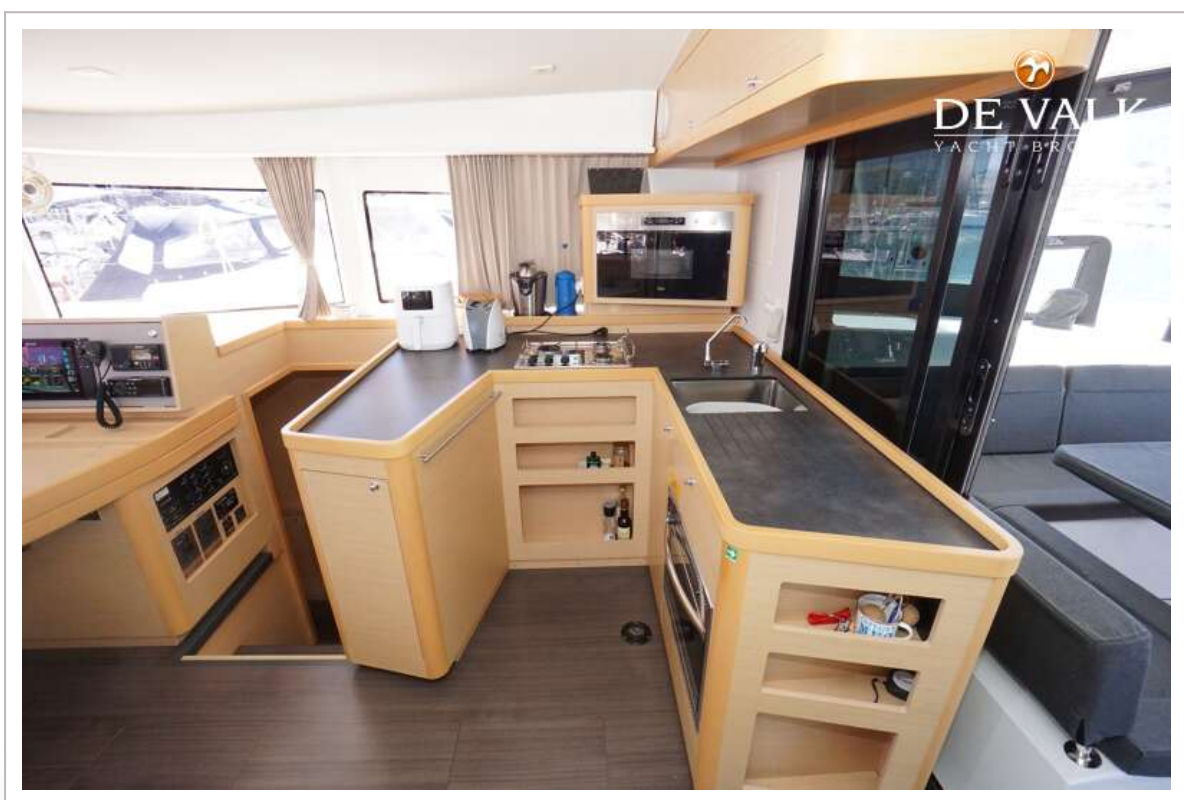
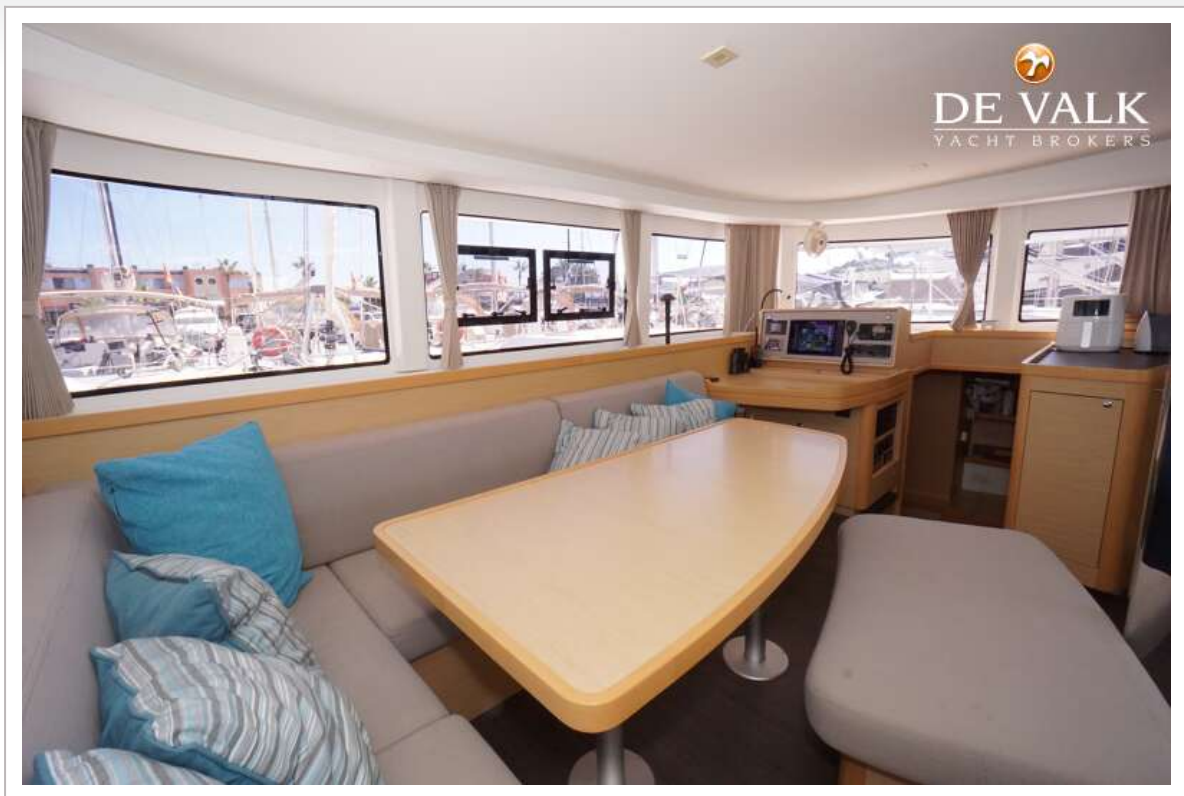
## LAGOON 42



# LAGOON 42



# LAGOON 42





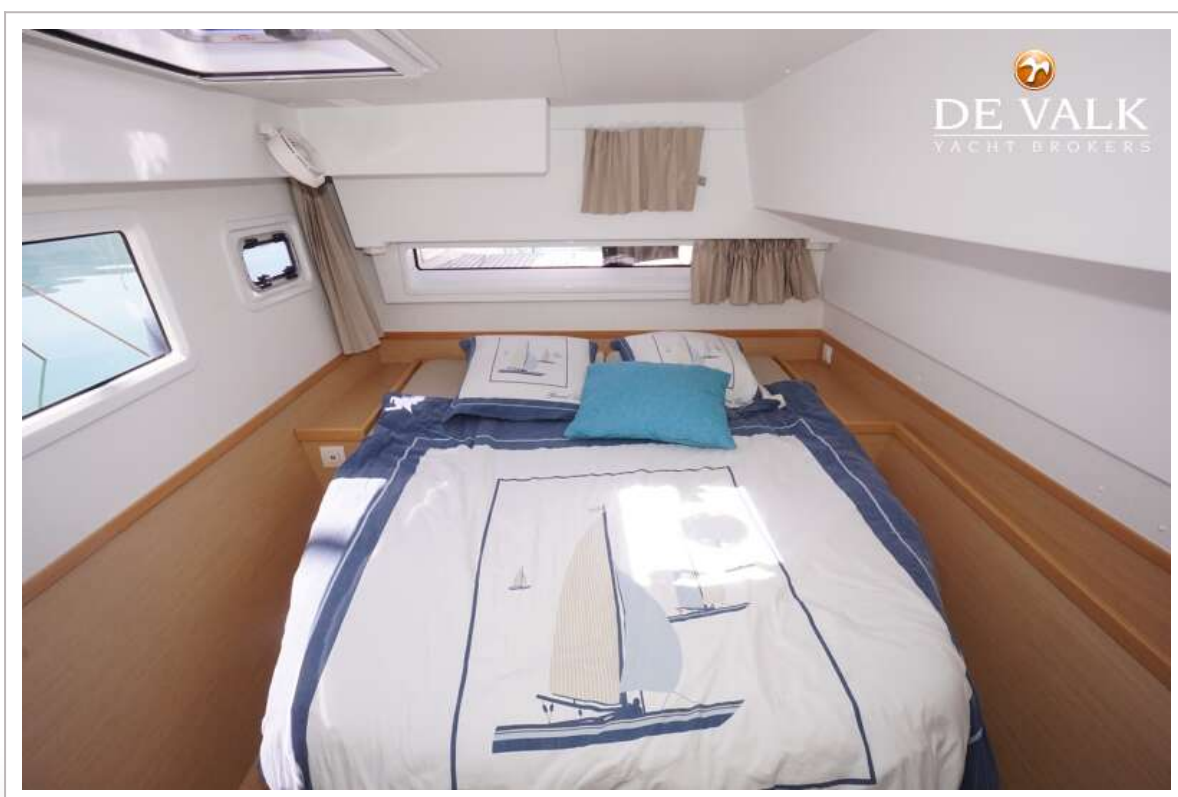
# LAGOON 42



# LAGOON 42



# LAGOON 42

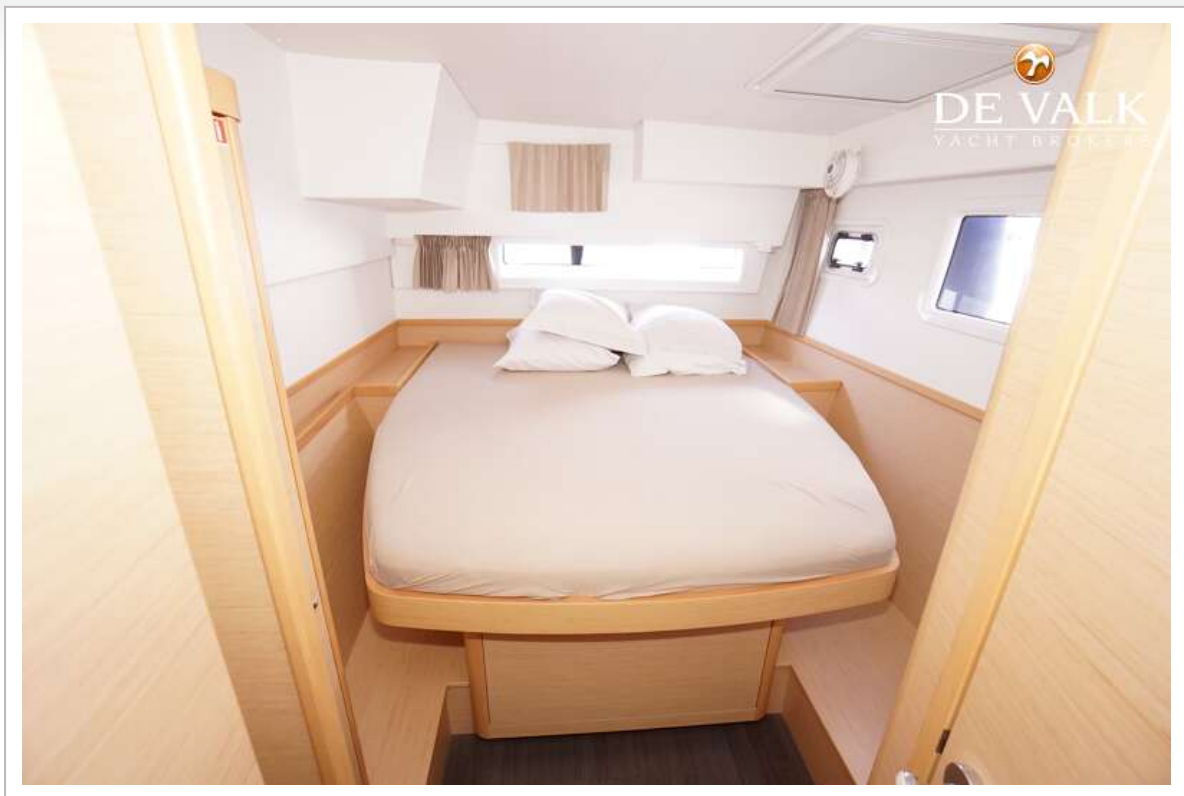




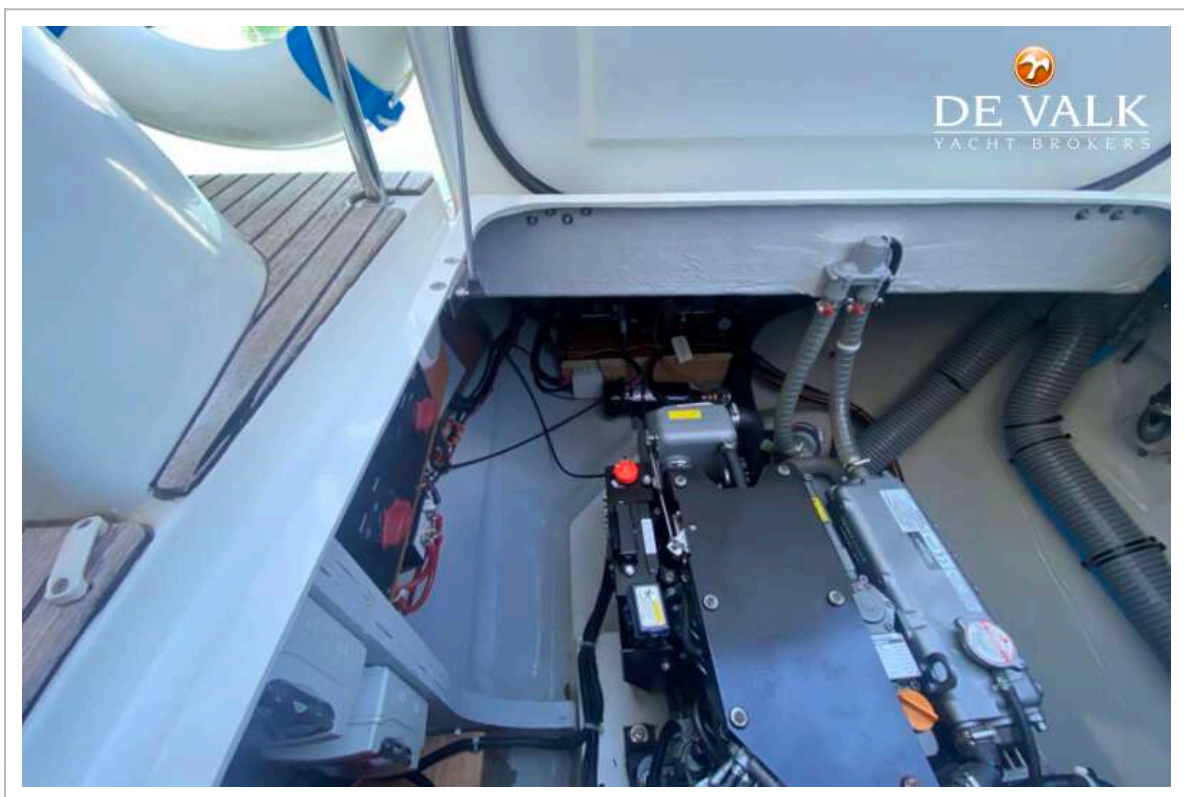
# LAGOON 42



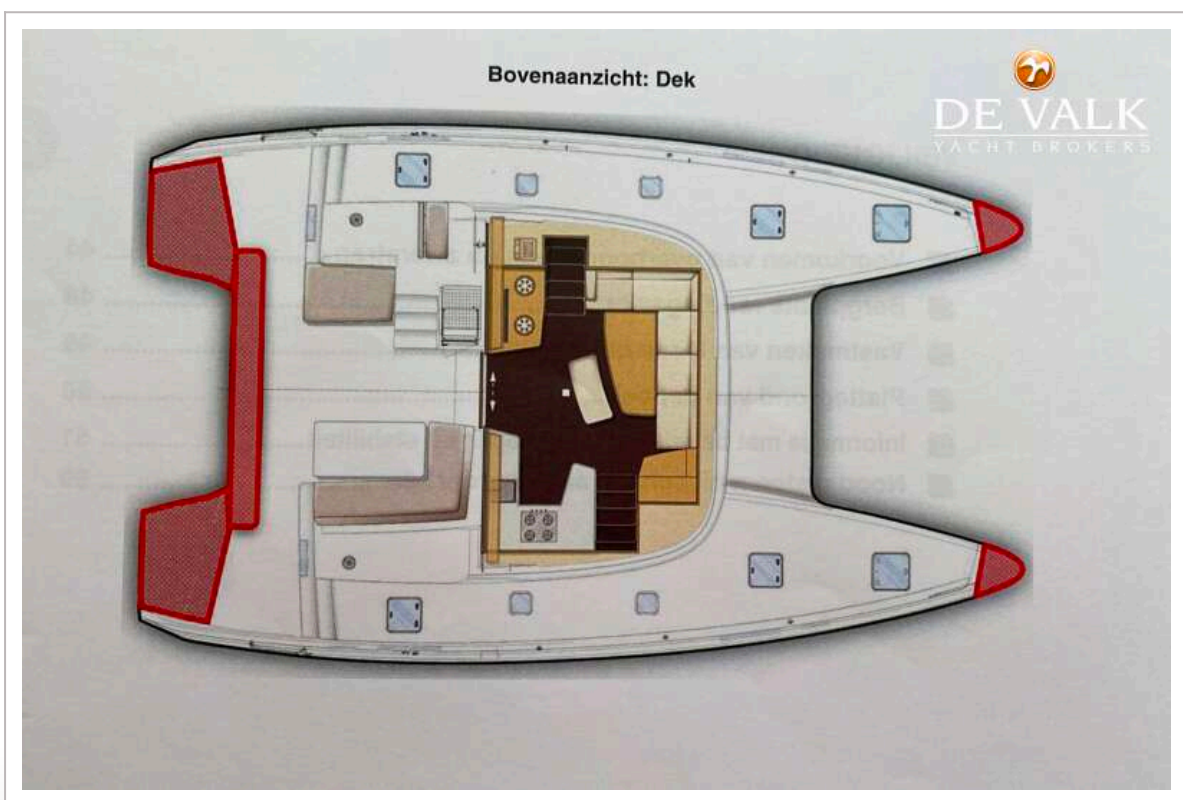
# LAGOON 42

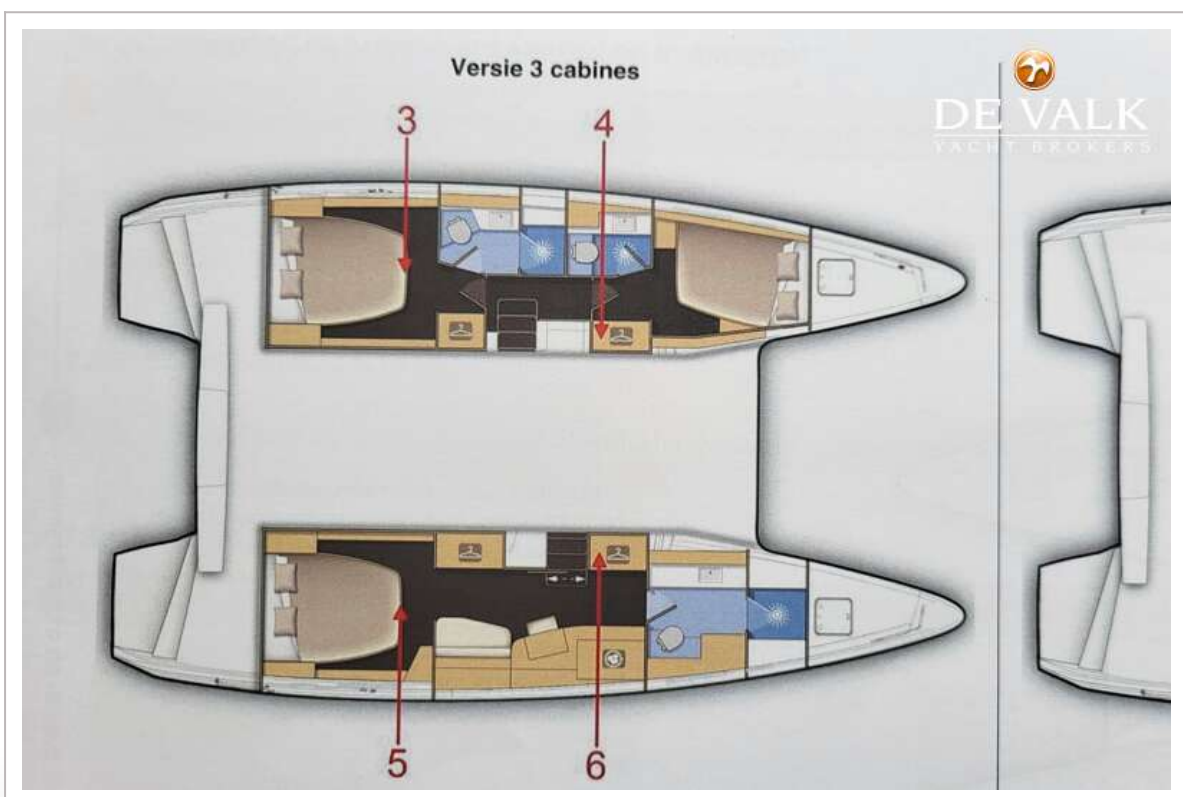
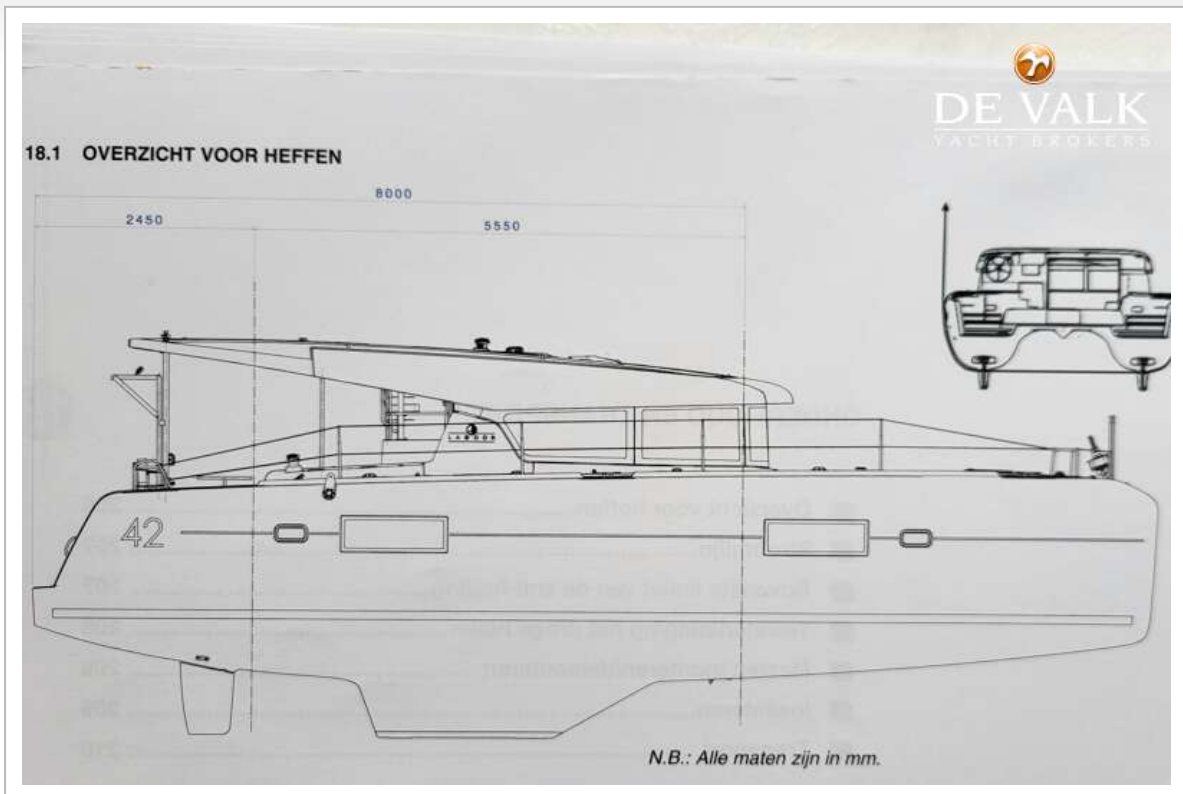


## LAGOON 42









# LAGOON 42

