



JAN VAN GENT 10.35 CABIN

JAN VAN GENT 10.35 CABIN

BROKER'S COMMENTS

A sturdy Cabin sloop from the Dutch Jan van Gent yard. Designed and built in the Netherlands, the famous Jan van Gent sloops keep showing what they are good at. This 10.35 Cabin version with an extensive inventory is certainly suitable for long weekend trips and fast crossings. Feel free to take the young family members on board because they will also enjoy themselves. With 315 hp (in extra insulation box) you can entertain yourself and them with water skiing, boarding, etc. In short, everything to entertain you on and around the water with everything that makes water sports so much fun.

Marc Weijenberg

SPECIFICATIONS

Dimensions	10.35 x 3.30 x 0.85 (m)	Builder	Jan van Gent Jachtbouw
Built	2003	Cabins	1
Material	GRP	Berths	2
Engine(s)	1 x Yanmar 6LP diesel	Hp/Kw	315.00 (hp), 231.84 (kw)
Asking price	sold (VAT)	Lying	elsewhere / Not at sales office

CONTACT

Sales office	De Valk Thuishaven	Telephone	+31 35 5829042
Address	Peperstraat 7 1411 PX Naarden NL	E-mail	thuishaven@devalk.nl

DISCLAIMER

These particulars are given in good faith as supplied but cannot be guaranteed.



JAN VAN GENT 10.35 CABIN

GENERAL

Model	JAN VAN GENT 10.35 CABIN
Type	motor yacht
LOA (m)	10,35
Beam (m)	3,30
Draft (m)	0,85
Air draft (m)	1,50
Year built	2003
Builder	Jan van Gent Jachtbouw
Country	The Netherlands
Designer	Jan van Gent Jachtbouw
Displacement (t)	4,5
CE norm	C
Hull material	GRP
Hull colour	off-white
Hull shape	round-bilged
Superstructure material	GRP
Rubbing strake	fender rope
Deck material	GRP
Deck finish	non-skid moulded in
Cockpit deck finish	teak
Portholes	stainless steel 6 x
Fuel tank (litre)	polyethylene 1 x 220 (2021)
Freshwater tank (litre)	stainless steel 120
Wheel steering	hydraulic
Emergency tiller	yes
Extra info	Stainless steel bowstrip, steering wheel cover
Extra info	Uwbody fitted with sprayrails feature for better ride and comfort
Extra info	With CE-C classification to be safely used on inland and coastal waters. With 315 hp on tap, ideal passagemaker. You can even go waterskiing



ACCOMMODATION

Cabins	1
Berths	2
Interior	Teak trim finish
Floor	teak
Open cockpit	yes
Sliding roof	yes
Heating	diesel ducted hot air Webasto
Opening door to cockpit	yes
Countertop	Corian
Sink	stainless steel
Microwave	yes
Fridge	yes
Hot water system	by engine
Water pressure system	electrical
Owners cabin	v-bed
Toilet	(waste bag type)

MACHINERY

No of engines	1
Make	Yanmar
Type	6LP
HP	315
kW	231.84
Fuel	diesel
Year installed	2003
Maximum speed (kn)	21
Cruising speed (kn)	6
Consumption (l/hr)	5
Engine hours	1150
Engine cooling system	freshwater heat exchanger



JAN VAN GENT 10.35 CABIN

Drive	shaft
Shaft seal	yes
Engine controls	bowden cable
Gearbox	hydraulic
Bowthruster	electric 12v
Exhaust	watercooled
Propeller type	fixed
Propeller blades	4
Propeller shaft material	stainless steel
Shaft lubrication	water
Manual bilge pump	yes
Electric bilge pump	yes
Electrical installation	12/220v
Start battery	(2021)
Service battery	(2021)
Battery charger	yes
Inverter	yes
Shorepower	with cable
Trimtabs	fixed
Extra info	Aluminum engine cover (3 part) for extra noise insulation

NAVIGATION

Electric compass	via autopilot
Depth sounder/log	Raymarine ST60 Tridata
Autopilot	Raymarine ST5000+
Rudder angle indicator	yes
Navigation lights	yes
Searchlight	handheld

EQUIPMENT

Cockpit cover	yes
---------------	-----



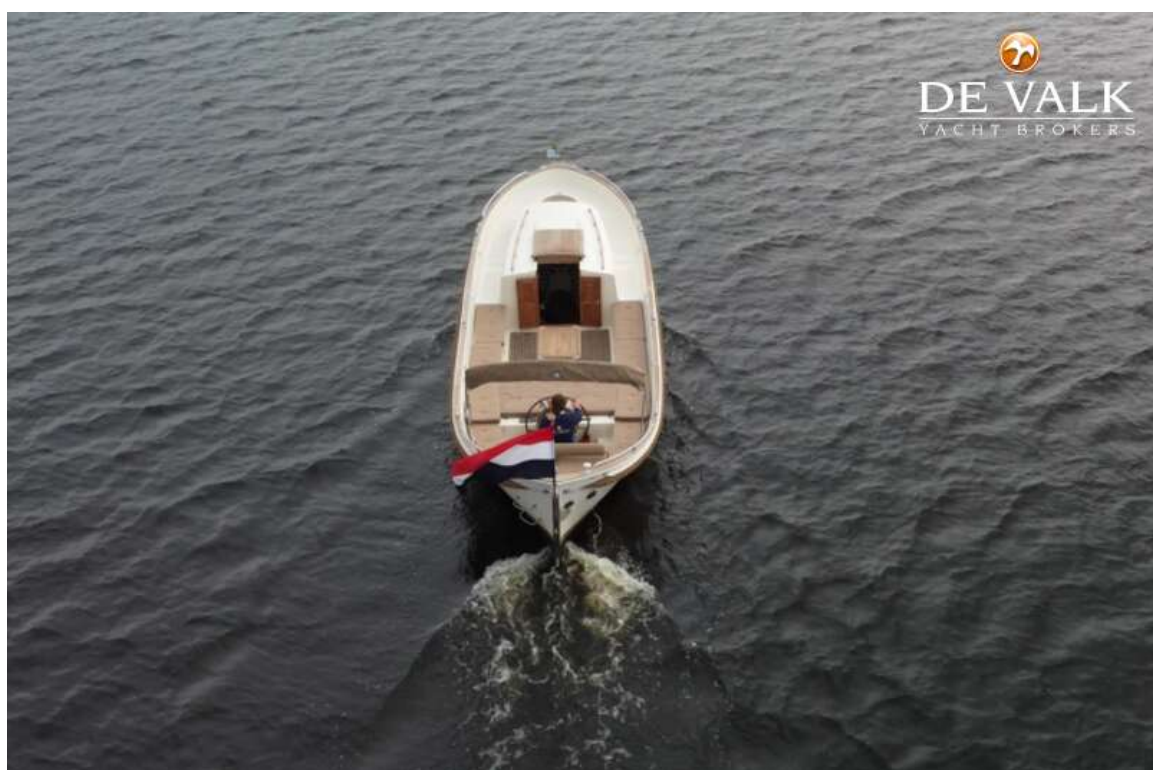
JAN VAN GENT 10.35 CABIN

Bimini	yes
Cockpit cushions	yes
Cockpit table	yes
Boarding ladder	yes
Deck shower	hot + cold water
Anchor	yes
Anchor chain	leadline
Sea railing	stainless steel
Grab rail (superstructure)	teak
Fenders	yes
Mooring lines	yes
Radio-cd player	Sony
Cockpit speakers	yes
Speakers in cabin	yes





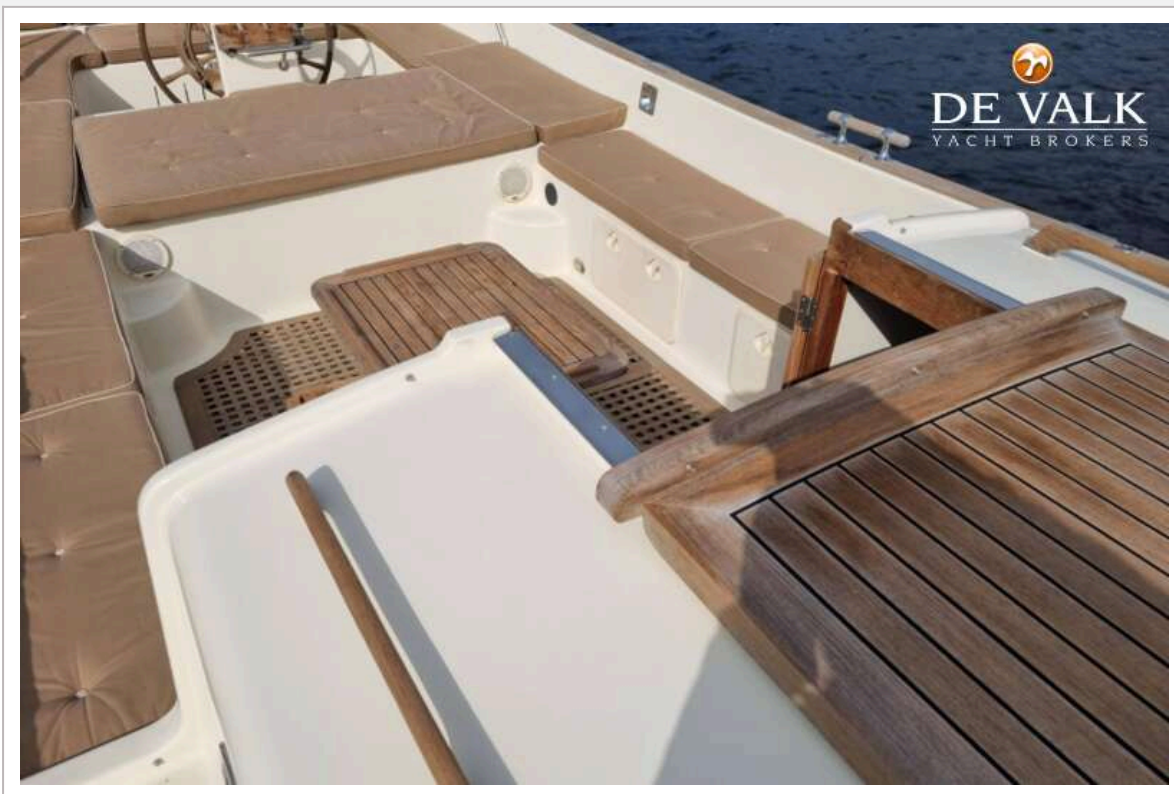
JAN VAN GENT 10.35 CABIN



JAN VAN GENT 10.35 CABIN



JAN VAN GENT 10.35 CABIN



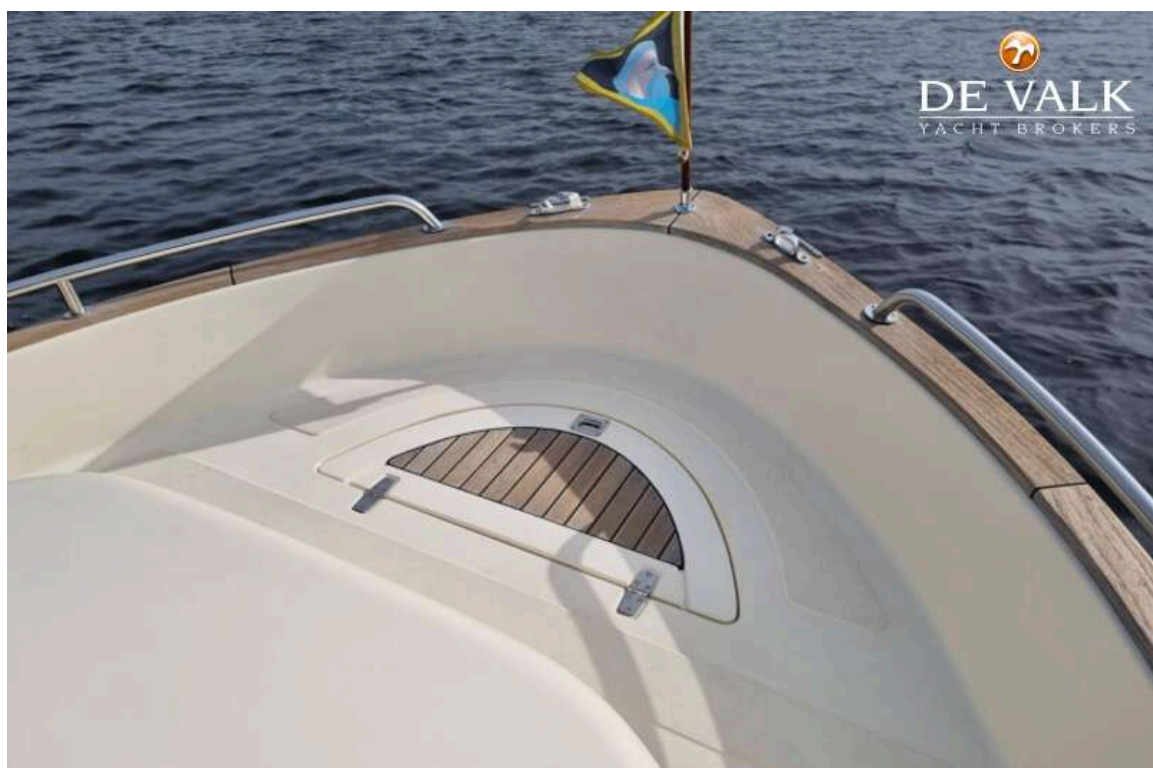
JAN VAN GENT 10.35 CABIN

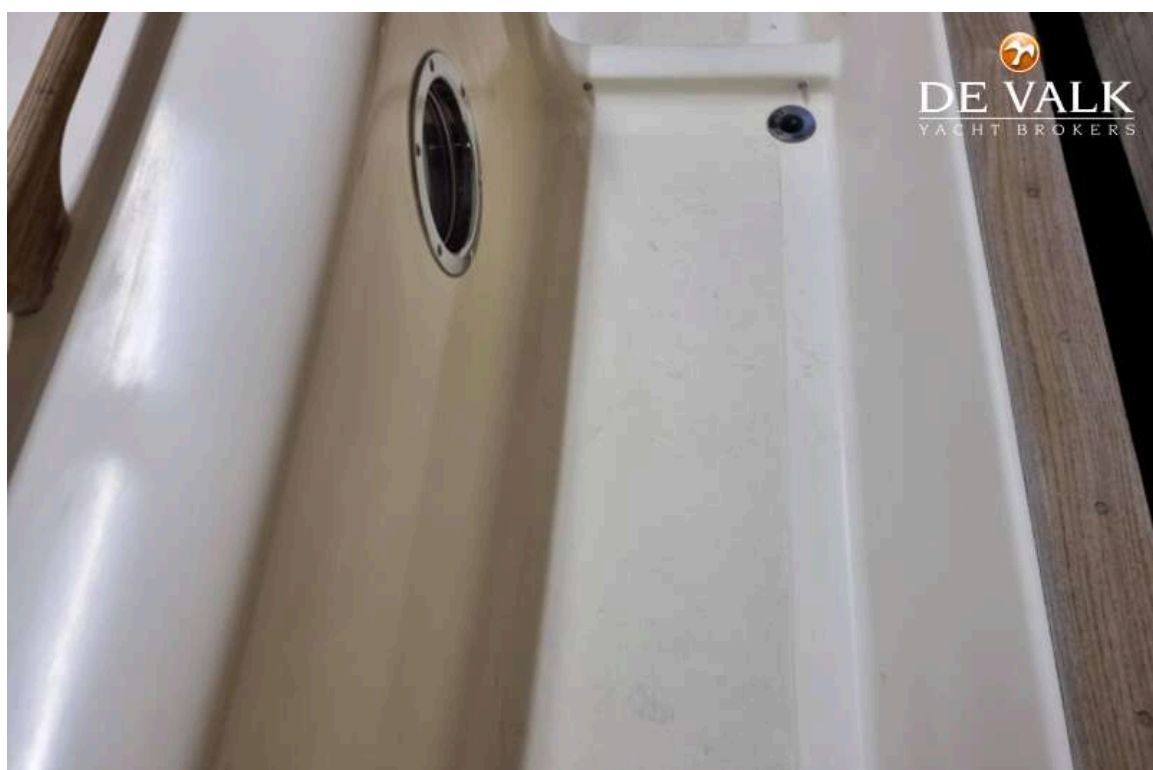


JAN VAN GENT 10.35 CABIN

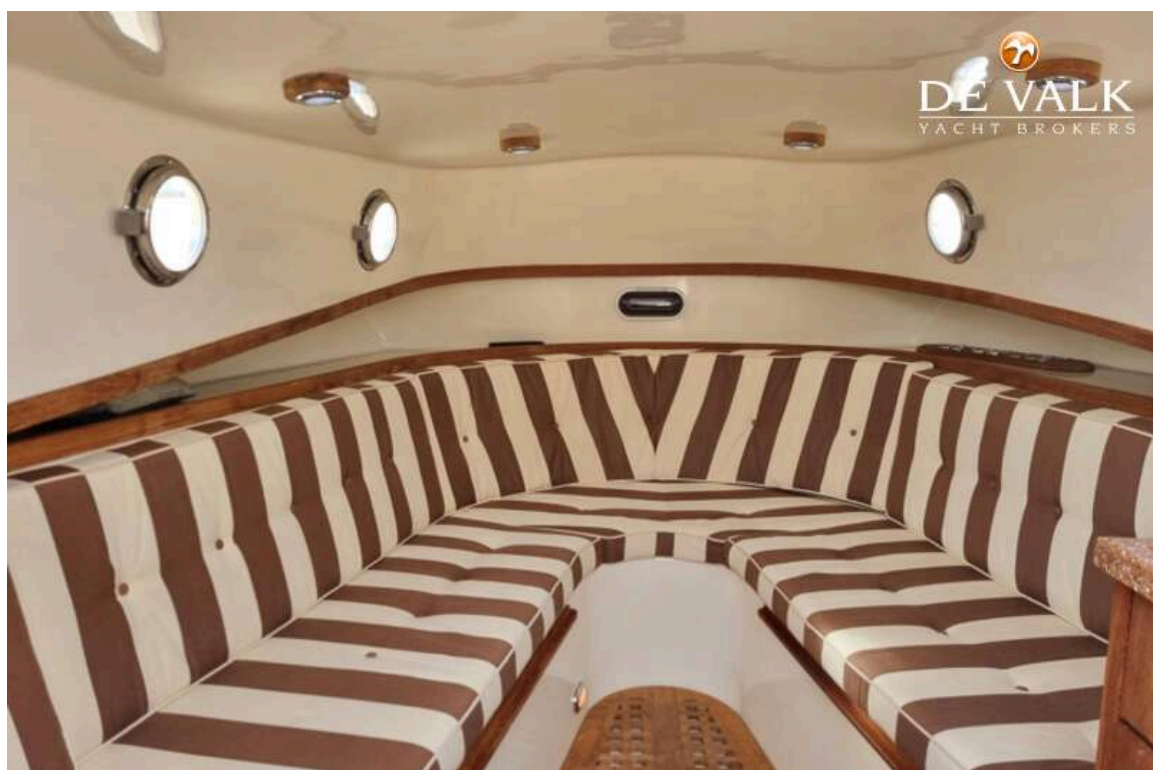


JAN VAN GENT 10.35 CABIN

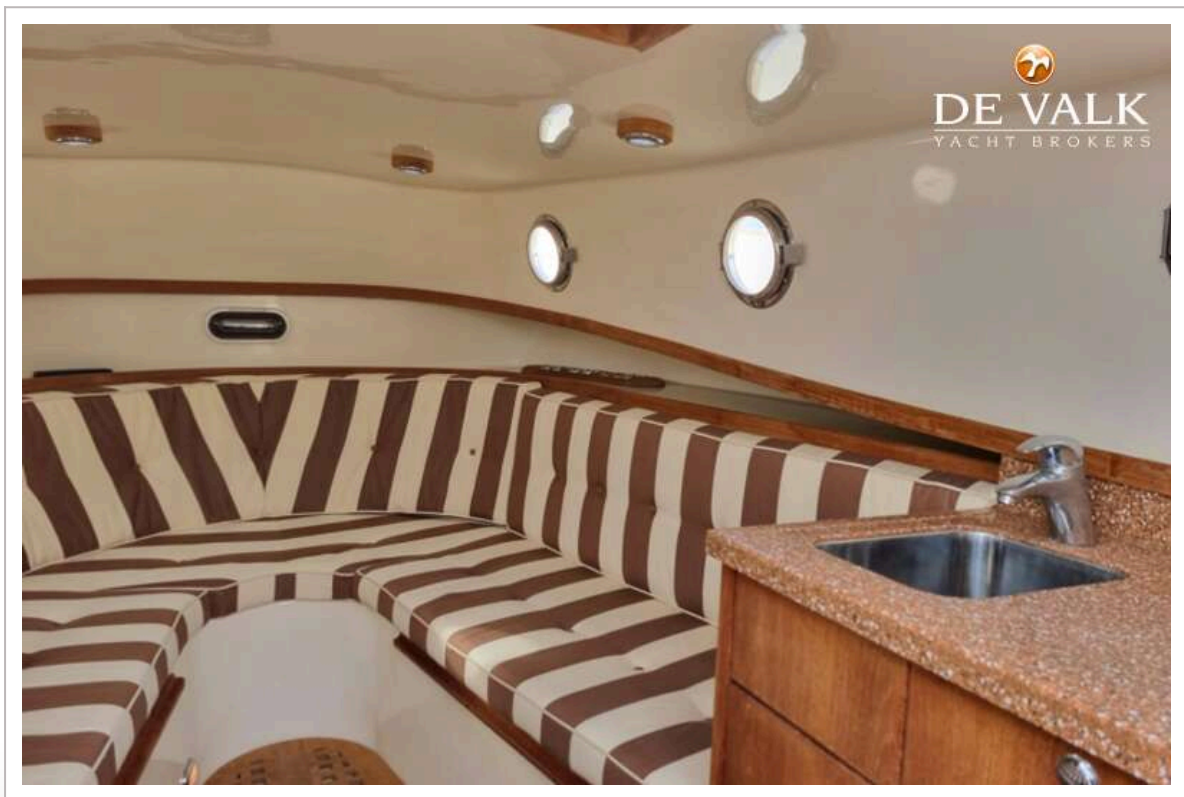
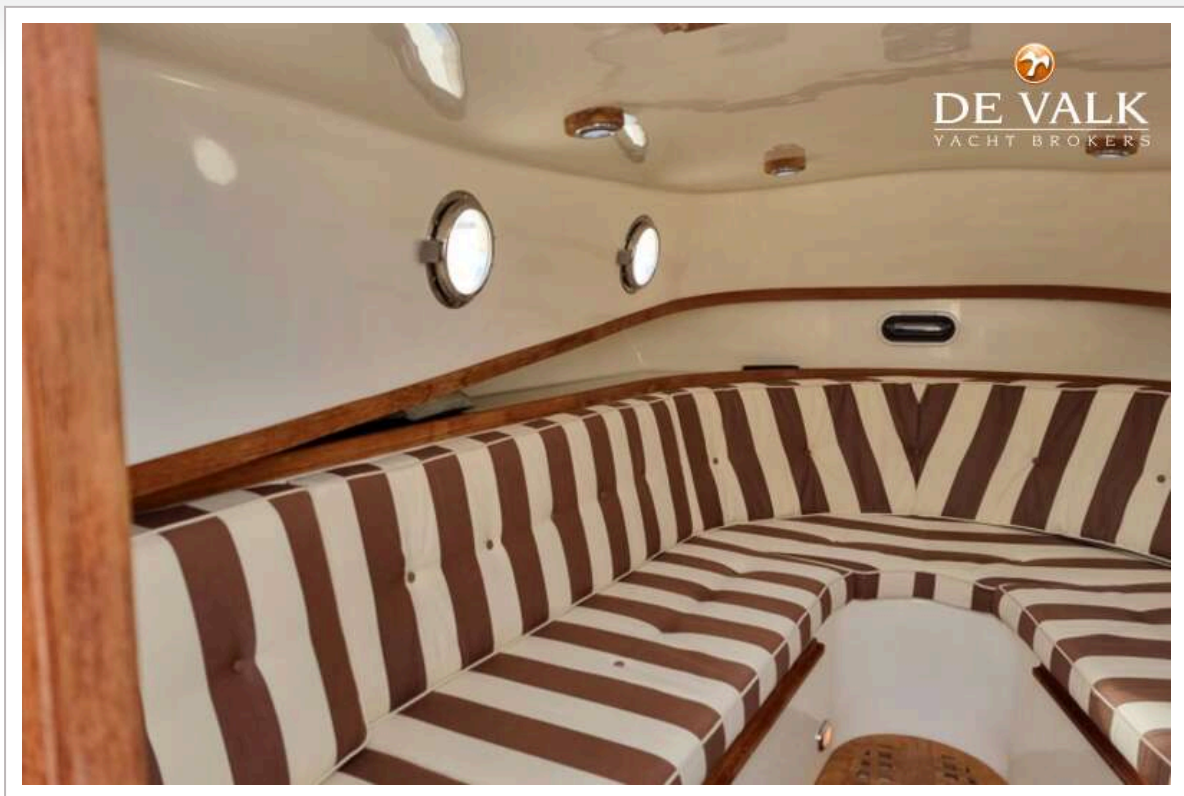




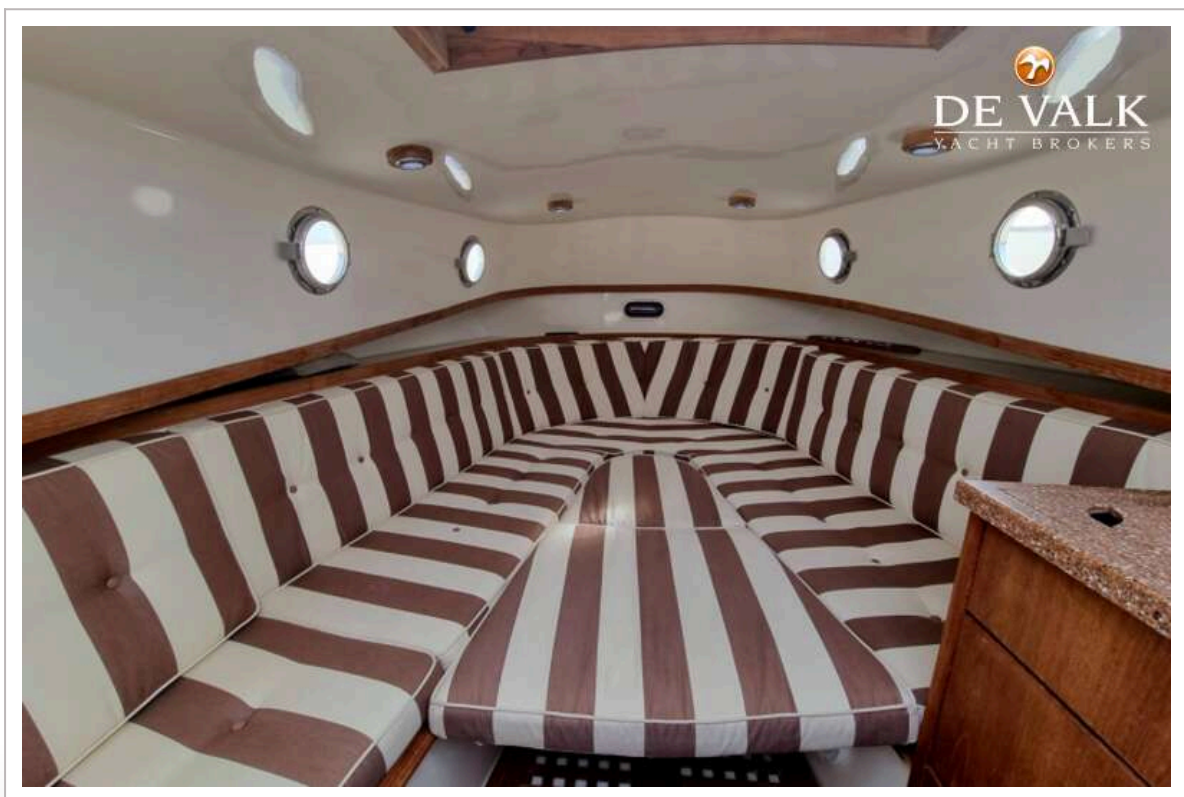
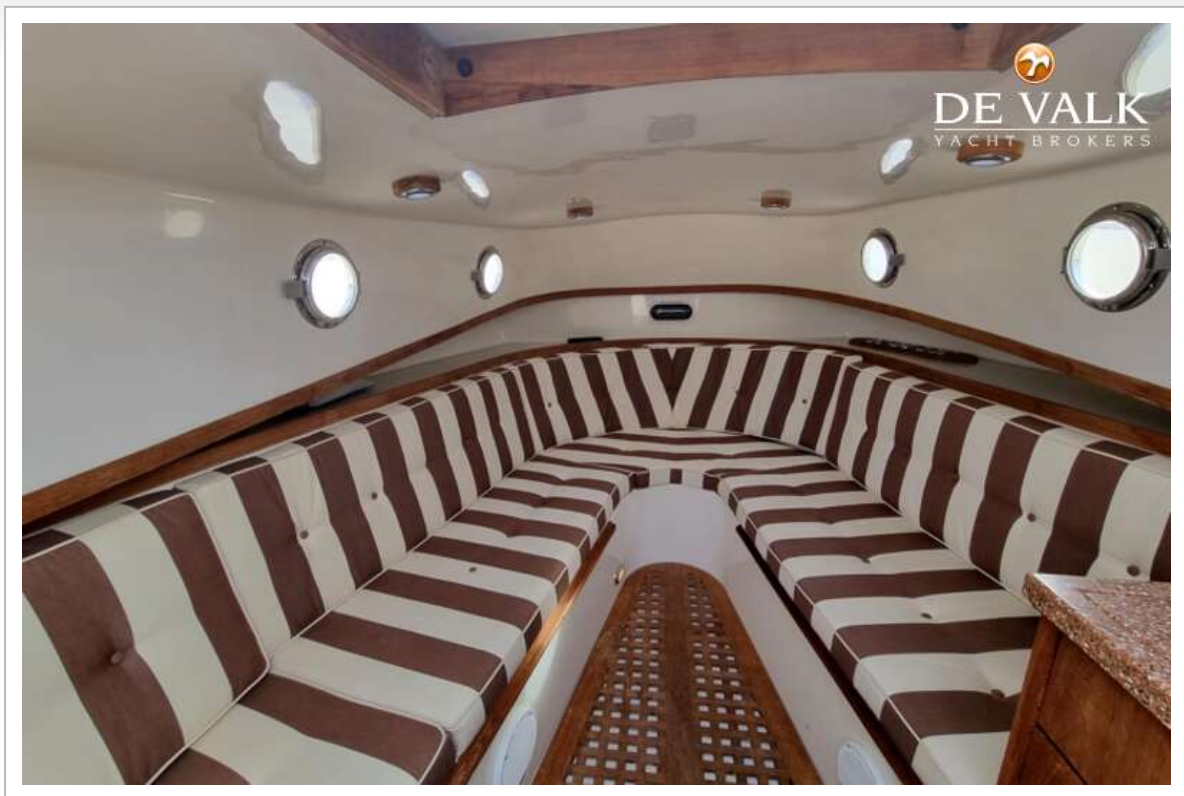




JAN VAN GENT 10.35 CABIN



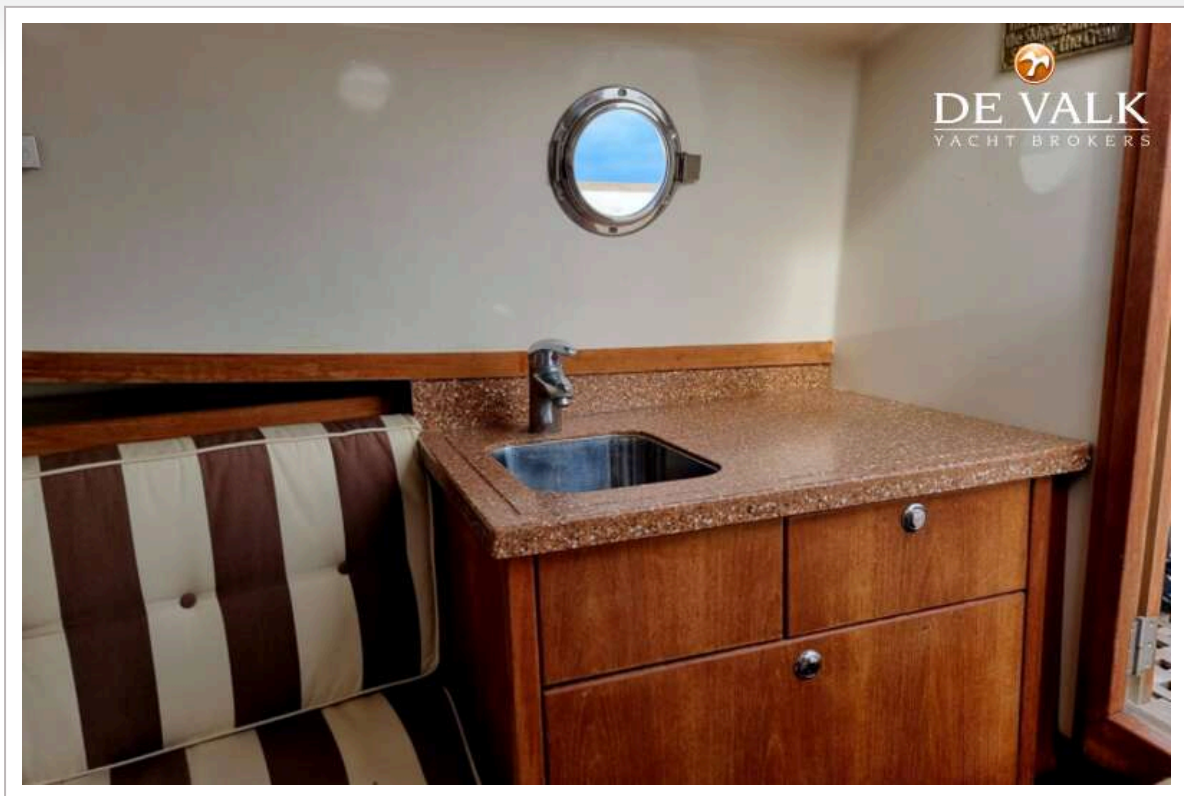
JAN VAN GENT 10.35 CABIN



JAN VAN GENT 10.35 CABIN



JAN VAN GENT 10.35 CABIN



JAN VAN GENT 10.35 CABIN



JAN VAN GENT 10.35 CABIN



JAN VAN GENT 10.35 CABIN

