



TRINTELLA 44


DE VALK
YACHT BROKERS

BROKER'S COMMENTS

This Trintella 44 was the proud flagship of Anne Wever Shipyard's famous Trintella series and owned by himself in the past. An excellent yacht built for optimal living and sailing comfort even during the longest sea voyage. Designed by Van de Stadt and built using only high-quality materials, this is a yacht that will last a long time and offers many years of enjoyable cruising. Are you looking for a long range cruiser or a spacious liveaboard, 'Paradise Bird' will impress! She can be viewed on Lefkas, Greece.

Ron Neij

SPECIFICATIONS

Dimensions	13.40 x 4.10 x 2.20 (m)	Builder	Anne Wever, Trintella Yachts
Built	1978	Cabins	3
Material	GRP	Berths	6
Engine(s)	1 x Perkins sabre M135 diesel	Hp/Kw	125.00 (hp), 92.00 (kw)
Asking price	€ 69.000 (VAT Exempt)	Lying	elsewhere / Not at sales office

CONTACT

Sales office	De Valk Monnickendam B.V.	Telephone	+31 (0)299 65 63 50
Address	Hoogedijk 6 1145 PM Katwoude NL	E-mail	monnickendam@devalk.nl

DISCLAIMER

These particulars are given in good faith as supplied but cannot be guaranteed.



GENERAL

Model	TRINTELLA 44
Type	sailing yacht
LOA (m)	13,40
LWL (m)	10,80
Beam (m)	4,10
Draft (m)	2,20
Headroom (m)	2,10
Year built	1978
Builder	Anne Wever, Trintella Yachts
Country	The Netherlands
Designer	Van de Stadt & Partners
Displacement (t)	19
Ballast (tonnes)	lead - 6
Hull material	GRP
Hull colour	white
Hull shape	round-bilged
Keel type	fin keel
Superstructure material	GRP
Rubbing strake	stainless steel
Deck material	teak
Deck finish	teak - 2012
Superstructure deck finish	teak - 2012
Cockpit deck finish	teak - 2012
Antifouling (year)	2023
Dorades	4x
Window frame	aluminium
Window material	polycarbonate
Deckhatch	2 x
Portholes	10 x
Fuel tank (litre)	200



Level indicator (fuel tank)	yes
Freshwater tank (litre)	GRP - 600
Level indicator (freshwater)	yes
Blackwater tank (litre)	yes
Wheel steering	mechanical
Emergency tiller	yes
More info on hull	new Antifouling 2022

ACCOMMODATION

Cabins	3
Berths	6
Interior	teak
Floor	teak and holly
Aft deck	yes
Saloon	U-shaped
Chart table	yes
Aft Cabin	yes
Dinette	yes
Galley	longitudinal kitchen
Countertop	tiles
Sink	stainless steel - 2
Cooker	electric calor gas gas Gas - Scholtes
Fridge	Isotherm ASU
Hot water system	220V + engine
Water pressure system	electrical
Manual and/or foot pump	yes
Owners cabin	double bed
Wardrobe	hanging and shelves
Bathroom	en suite
Toilet	en suite
Toilet system	manual



Wash basin	in the bathroom
Shower	en suite
Guest cabin 1	v-bed
Wardrobe	hanging and shelves
Bathroom	shared
Toilet	shared
Toilet system	manual
Wash basin	in the bathroom
Shower	shared
Guest cabin 2	bunk bed

MACHINERY

No of engines	1
Make	Perkins
Type	Sabre M135
HP	125
kW	92
Fuel	diesel
Year installed	1994
Engine cooling system	freshwater heat exchanger
Drive	shaft
Engine controls	bowden cable
Gearbox	yes
Bowthruster	electric - MaxPower
Exhaust	watercooled
Propeller type	fixed
Propeller blades	3
Propeller shaft material	stainless steel
Shaft lubrication	grease
Manual bilge pump	yes
Electric bilge pump	yes



Electrical installation	12V / 24 V / 220V
Start battery	2 years - 2
Service battery	4 years - 4
Battery monitor	yes
Battery charger	Victron Energy 24V / 50 A
Shorepower	with cable

NAVIGATION

Compass	2 x Contest
Depth sounder	Raymarine ST60+
Depth sounder/log	Raymarine ST60+
Windset	Raymarine ST60+
Autopilot	Raymarine ST6002
Plotter/GPS	Raymarine A50
Navigation lights	yes

EQUIPMENT

Fixed windscreen	yes
Sprayhood	yes
Bimini	yes
Cockpit cushions	yes
Cockpit table	yes
Boarding ladder	stainless steel
Anchor	CQR Plough - 30 kg
Anchor chain	60 m
Anchor 2	25 kg
Windlass	electrical
Outboard	Mercury
Outboard support	yes
Sea railing	wire
Pushpit	yes



Pulpit	yes
Life raft	yes
Last life raft survey	needs service
Radar reflector	yes
Fenders	yes
Mooring lines	yes
Speakers in salon	Blaupunkt
Fire extinguisher	yes

RIGGING

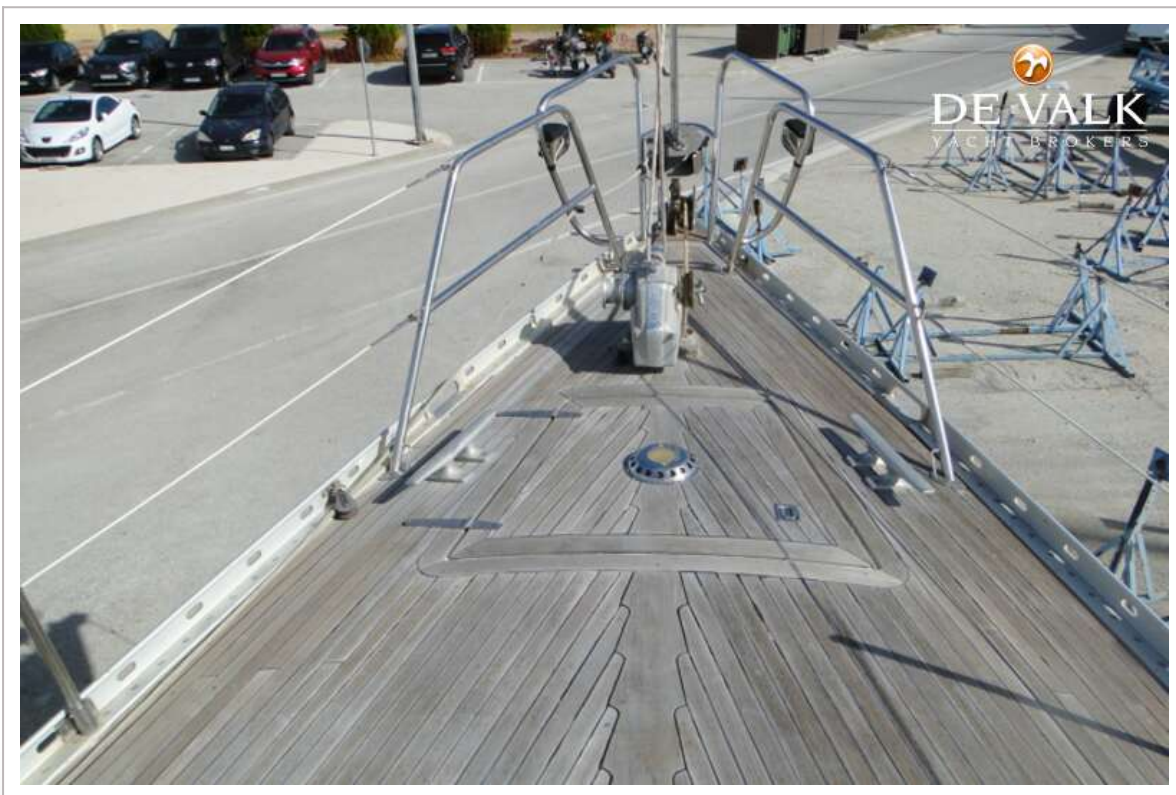
Rigging	sloop-cutter
Standing rigging	wire - 2012
Brand mast	Sparlight
Material mast	aluminium
Spreaders	single
Mainsail cover	yes
Fully battened mainsail	20 years - 39,5 m2
Genoa	8 years - 72,7 m2
Genoa furler	yes
Genoa cover	yes
Boomvang	mechanical
Secondary sheet winch	manual - 1 X Barlow
Genoa sheetwinches	Electric - 2 x Barlow
Halyard winches	on Mast - 2 x Barlow
Reefing winch	on Mast
Spi-pole	aluminium



TRINTELLA 44



TRINTELLA 44



TRINTELLA 44







TRINTELLA 44





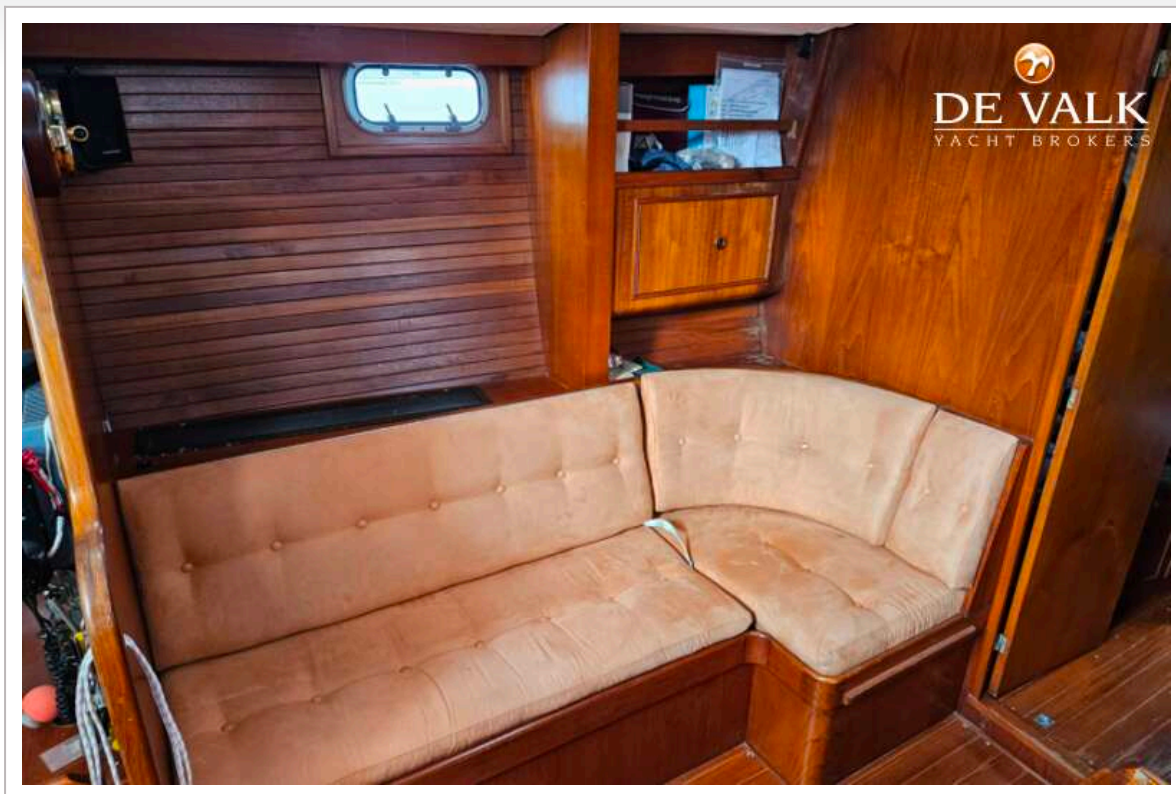
TRINTELLA 44



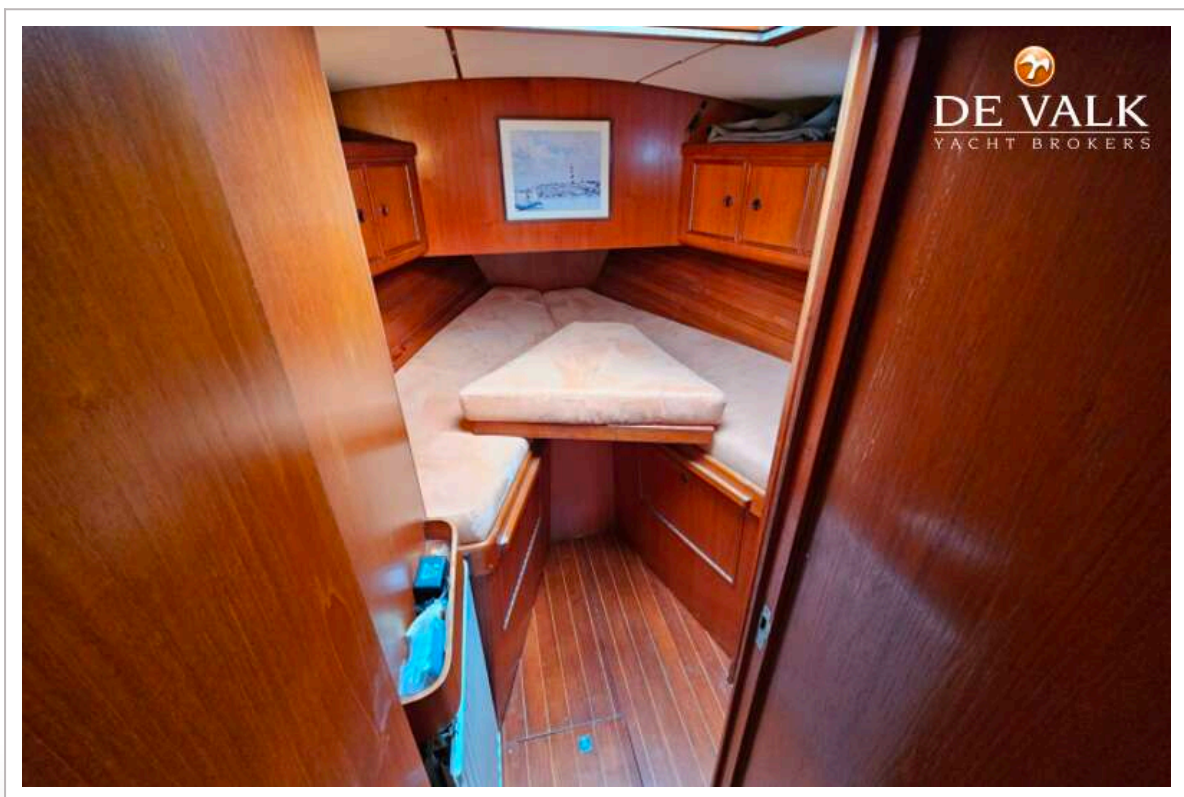
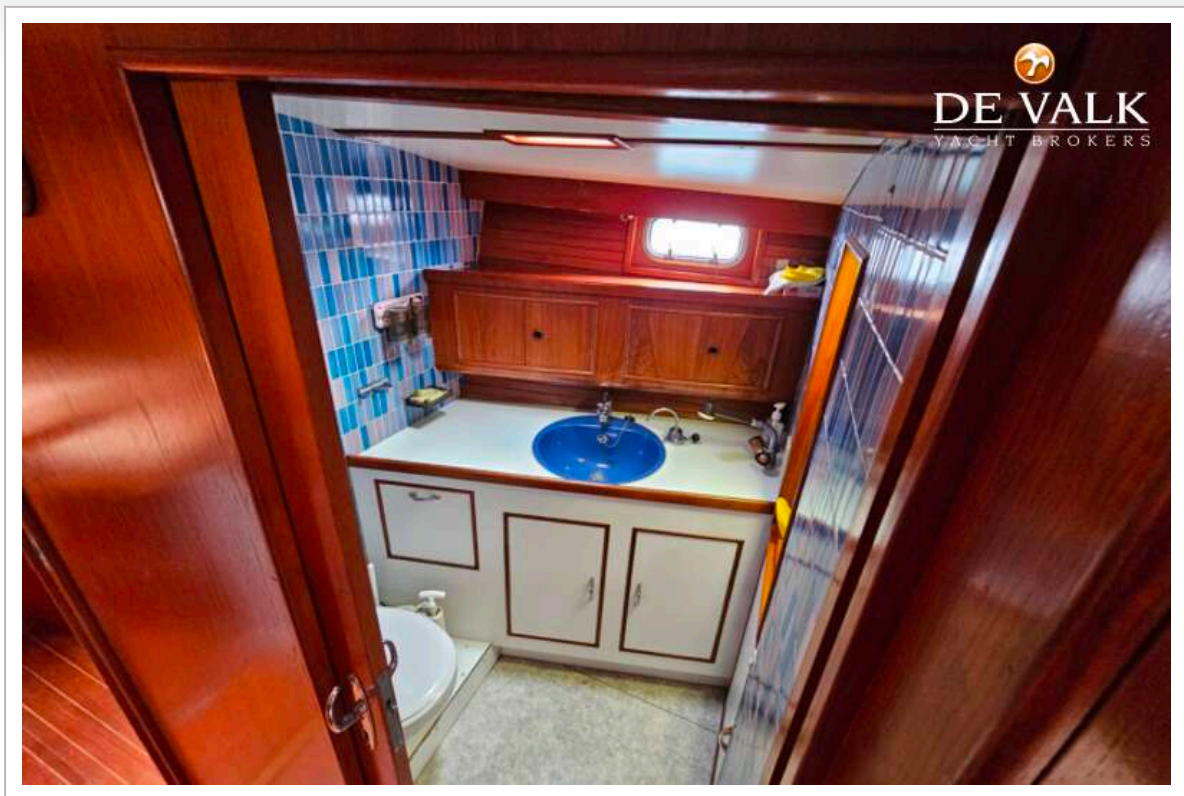
TRINTELLA 44



TRINTELLA 44



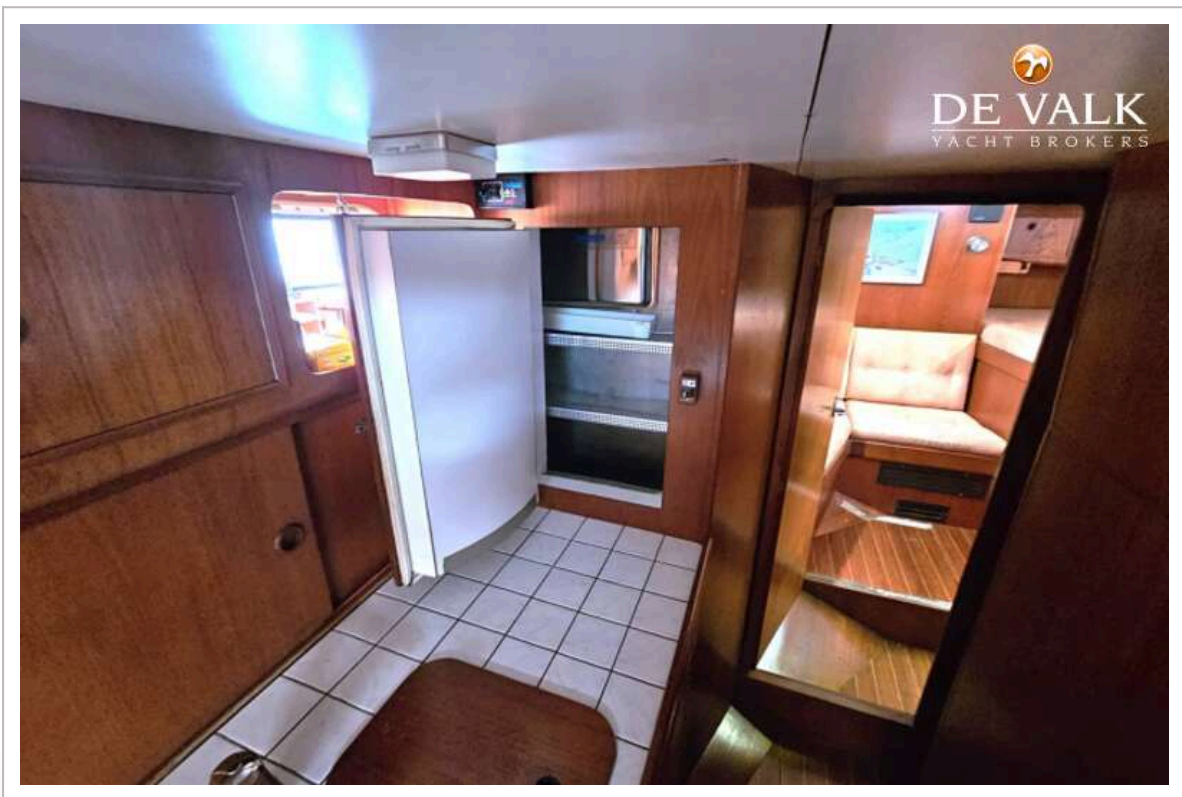
TRINTELLA 44



TRINTELLA 44



TRINTELLA 44





TRINTELLA 44

