



RODMAN 56 MUSE

RODMAN 56 MUSE

BROKER'S COMMENTS

With the Rodman 56 Muse, designed by naval architect Fulvio de Simoni's studio they have conceptualized in this range, the fusion of the beauty and personality. Style, strength, emotion, freedom... The perfect vessel in which to experience life at sea with her open and high saloon and comfortable fly bridge. At 22 kts already planing, consuming only 150L per hr! She received several important refits and maintenance to prepare her for her new owner. Available for viewing in the province of Almeria.

Jörg Hellmich

SPECIFICATIONS

Dimensions	17.36 x 4.86 x 0.85 (m)	Builder	Rodman
Built	2007	Cabins	4
Material	GRP	Berths	7
Engine(s)	2 x Volvo Penta D12 diesel	Hp/Kw	2 x 715.00 (hp), 526.24 (kw)
Asking price	sold (VAT)	Lying	at sales office

CONTACT

Sales office	De Valk Almeria	Telephone	+34 950 497 825
Address	Puerto Deportivo, Darsena de la Batea 42 04711 Almerimar ES	E-mail	almeria@devalk.nl

DISCLAIMER

These particulars are given in good faith as supplied but cannot be guaranteed.



RODMAN 56 MUSE

GENERAL

Model	RODMAN 56 MUSE
Type	motor yacht
LOA (m)	17,36
LWL (m)	16,80
Beam (m)	4,86
Draft (m)	0,85
Air draft (m)	6,00
Headroom (m)	2,10
Year built	2007
Builder	Rodman
Country	Spain
Designer	Fulvio de Simoni
Displacement (t)	24,5
Gross tonnage	60
CE norm	A
Hull material	GRP
Hull colour	white
Hull shape	Fast Displacement Hull
Superstructure material	GRP
Rubbing strake	stainless steel
Deck material	GRP
Deck finish	non-skid moulded in
Superstructure deck finish	non-skid moulded in
Cockpit deck finish	non-skid moulded in
Antifouling (year)	2024
Window frame	stainless steel
Window material	tempered glass
Deckhatch	yes
Portholes	stainless steel
Insulation	foam



RODMAN 56 MUSE

Flybridge	yes
Flybridge cockpit cover	yes
Flybridge suncover	yes
Radar arch	yes
Fuel tank (litre)	stainless steel 1425
Fuel tank 2 (litre)	stainless steel 1425
Level indicator (fuel tank)	Tankwatch 4 & Gauge
Freshwater tank (litre)	1000
Level indicator (freshwater)	Tankwatch 4 & Gauge
Blackwater tank (litre)	polyethylene 100
Blackwater tank extraction	deck extraction + pump
Greywater tank (litre)	polyethylene 100
Wheel steering	hydraulic
Inside helm position	yes
Flybridge helm position	hydraulic
More info on hull	In very good conditions
Extra info	No claims or damages reported
Extra info	New antifouling & anodes 02.2024
Extra info	Hull polish 02.2024

ACCOMMODATION

Cabins	4
Berths	7
Crew cabin	yes
Crew berths	yes
Interior	cherry
Layout	3 + 1 Crew Cabin version
Floor	wood
Aft deck	With teak
Saloon	yes
Headroom saloon (m)	2,10



RODMAN 56 MUSE

Air-conditioning	reverse cycle airco
Sliding door to aft deck	yes
Galley	L-shape
Countertop	corian
Sink	stainless steel Double
Cooker	electric
Oven	Electric
Extractor	yes
Microwave/oven combi	Fagor
Fridge	yes
Freezer	yes
Hot water system	220V + engine 80L. Boiler (new 2023)
Water pressure system	electrical
Dishwasher	Brandt
Kettle	yes
Hot water tap	yes
Crockery	yes
Owners cabin	double bed Forward
Bed length (m)	2,00 x 1,60
Wardrobe	hanging/drawers/shelves
Toilet	en suite
Toilet system	electric New 2023
Wash basin	at the toilet
Shower	en suite
Guest cabin 1	double bed
Bed length (m)	2,00 x 1,60
Wardrobe	hanging/drawers/shelves
Toilet	shared
Toilet system	electric New 2023
Wash basin	at the toilet
Shower	shared
Guest cabin 2	twin single



RODMAN 56 MUSE

Bed length (m)	2,00 x 0,70
Wardrobe	hanging/drawers/shelves
Washing machine	Aquamatic 3,5kg
Central vacuum cleaner	yes
Flybridge	yes
Wet bar	yes
Extra info	Gas grill on flybridge

MACHINERY

No of engines	2
Make	Volvo Penta
Type	D12
HP	715
kW	526.24
Fuel	diesel
Year installed	2007
Maximum speed (kn)	26
Cruising speed (kn)	22 @ 1,800 rpm
Consumption (l/hr)	150
Range (nm)	450
Engine hours	1040
Engine cooling system	freshwater heat exchanger
Drive	shaft
Shaft seal	yes
Engine controls	electrical
Gearbox	hydraulic
Bowthruster	electric Maxpower (New 2020)
Gearbox	hydraulic Volvo
Exhaust	watercooled
Propeller type	fixed
Propeller blades	4



RODMAN 56 MUSE

Propeller shaft material	stainless steel
Shaft lubrication	water
Manual bilge pump	yes
Electric bilge pump	4 units
Electrical installation	12V & 24V System, new controle panel in cockpit
Generator	wet exhaust Paguro (2019) 14kW
Running hours generator	527
Start battery	2 x 12V / 100 Amp Acid (2024)
Service battery	4 x 24V / 100 Amp Acid (2022)
Generator battery	1 x 12V / 100 Amp Acid (2022)
Bowthruster battery	1 x 12V / 100 Amp Acid (2022)
Battery monitor	Mastervolt
Battery charger/inverter	Victron Energy Skylla Blue Power 24/100 (2021)
Shorepower	with cable 230V
Insulation transformer	yes
Trimtabs	yes
Extra info	Full service on engines (2023) incl. all filters, impeller, oil
Extra info	Full service on generator (2023)
Extra info	Engines remote (berth) control

NAVIGATION

Compass	Plastimo
Compass on flybridge	Plastimo
Multi control display	Raymarine R (2023)
Depth sounder/log	2 x Raymarine ST60 Tridata
Repeater	yes
VHF	2 x Simrad RS82
VHF handheld	yes
Autopilot	2 x Raymarine ST6001 Smart Pilot
Radar/GPS/plotter	Raymarine E80 & R
Electronic chart(s)	Navionics



RODMAN 56 MUSE

EPIRB

Navigation lights

Hammar (2011)

yes

EQUIPMENT

Cockpit cover

New 2020

Bimini

New 2020

Winter cover

yes

Window cover

yes

Cockpit cushions

yes

Cockpit table

yes

Cockpit chairs

yes

Bathing platform

yes

Boarding ladder

stainless steel

Gangway

Hydraulic with remote control (new)

Deck shower

Hot & cold

Anchor

Delta

Anchor chain

60m

Windlass

electrical Lofrans

Windlass aft

manual

Deck wash

yes

Dinghy

rigid inflatable New 2022

Outboard

5 HP Yanmar (electric with 2 batteries for 2 hrs)

Sea railing

stainless steel

Grab rail (superstructure)

stainless steel

Pushpit

yes

Life raft

container For water (2 units)

Life raft (pers)

2 x 4

Last life raft survey

2017

Lifejackets

yes

Wiper

yes

Clearview window

yes



RODMAN 56 MUSE

Horn	yes
Binocular	yes
Radar reflector	yes
Fenders	yes
Mooring lines	yes
Spare parts	Ample
Tools	yes
TV	3 x LCD screens
TV receiver	yes
TracVision ball	Mega Sat (new)
Cockpit speakers	Sony
Speakers in salon	yes
Speakers in cabin	yes
Clock - barometer	yes
Fire extinguisher	yes
Auto extinguisher system	In engine room



RODMAN 56 MUZE



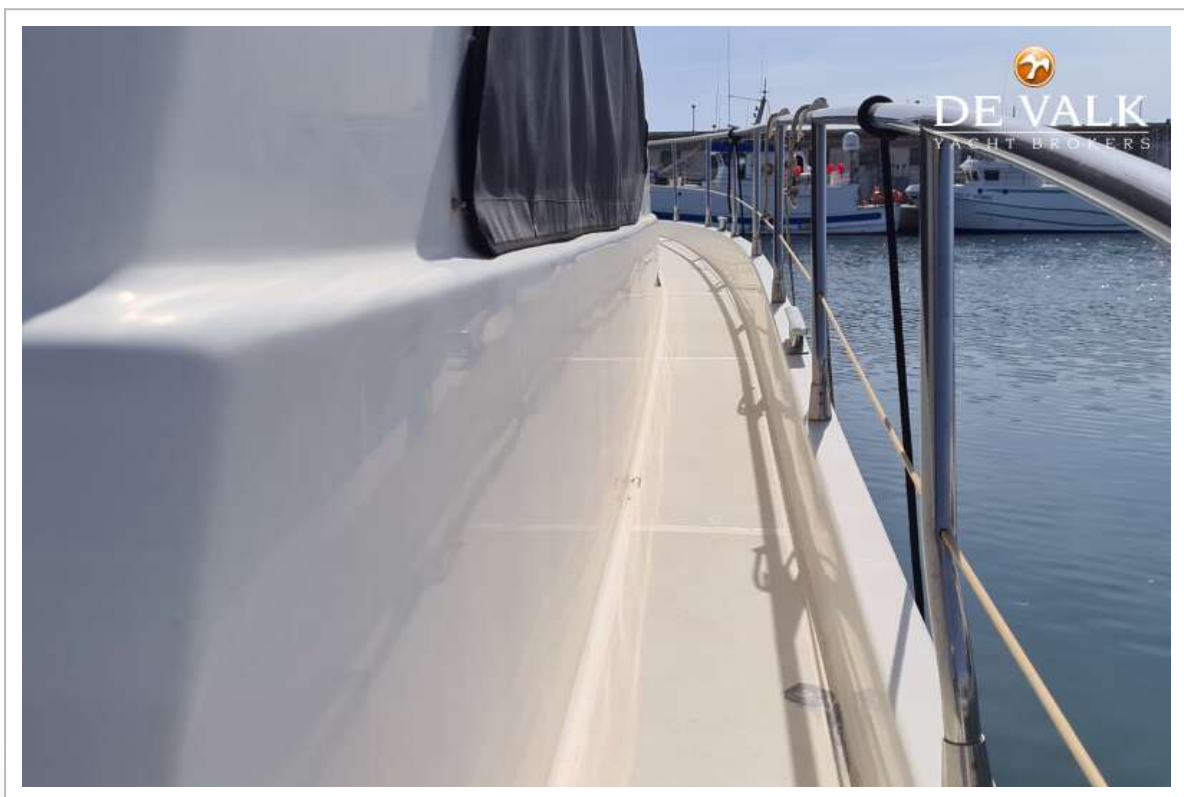
RODMAN 56 MUSE



RODMAN 56 MUSE



RODMAN 56 MUSE



RODMAN 56 MUSE



RODMAN 56 MUSE



RODMAN 56 MUSE



RODMAN 56 MUSE



RODMAN 56 MUZE



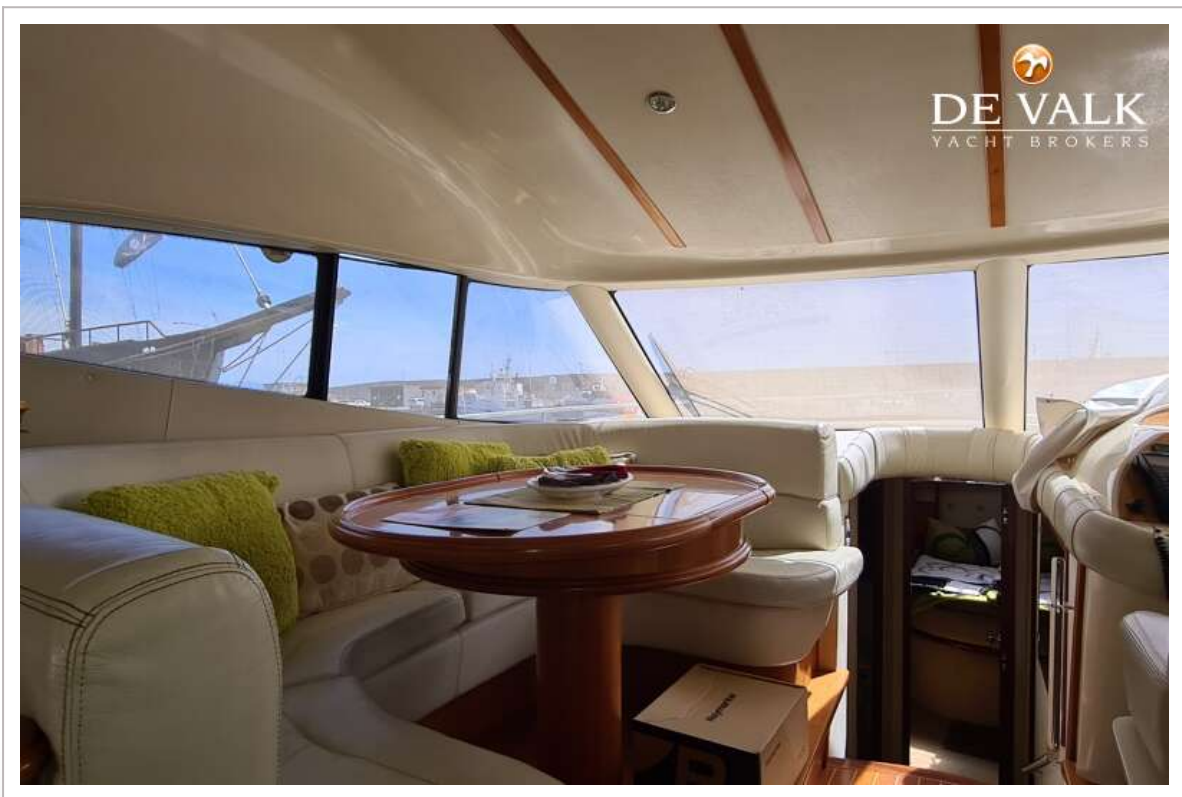
RODMAN 56 MUSE



RODMAN 56 MUSE



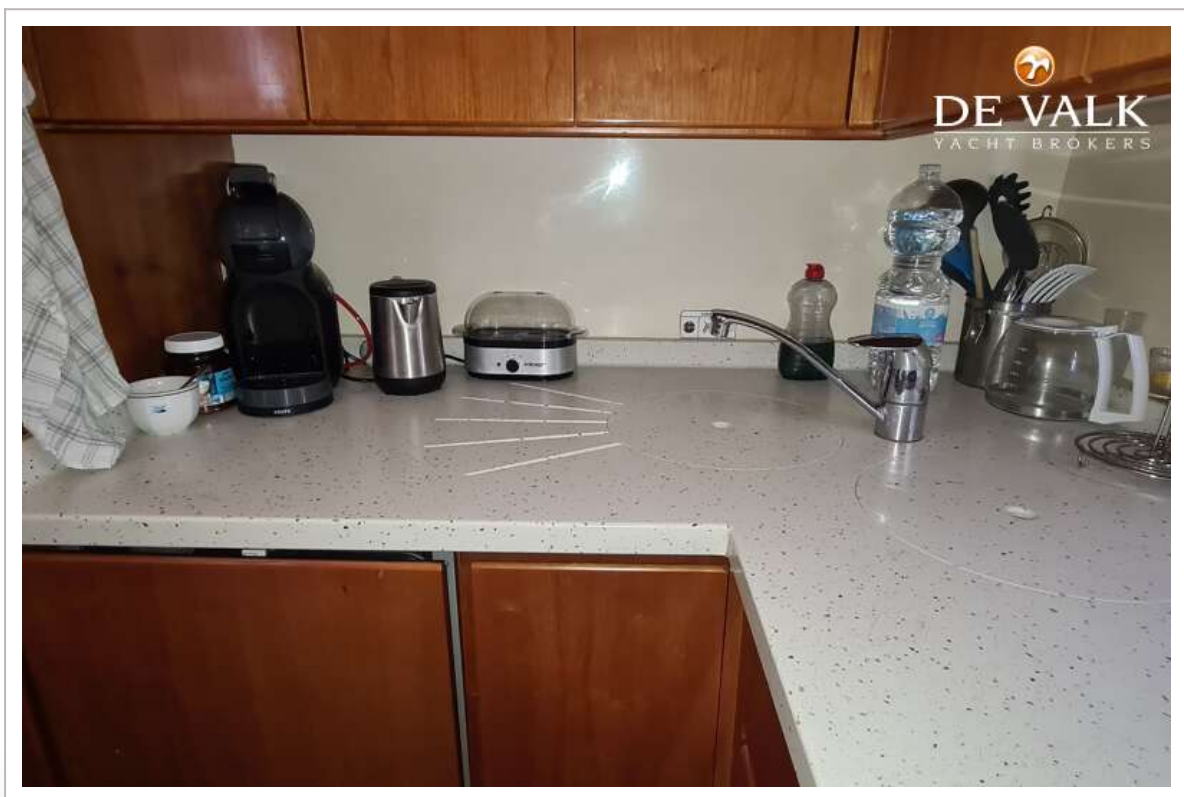
RODMAN 56 MUSE



RODMAN 56 MUSE



RODMAN 56 MUSE



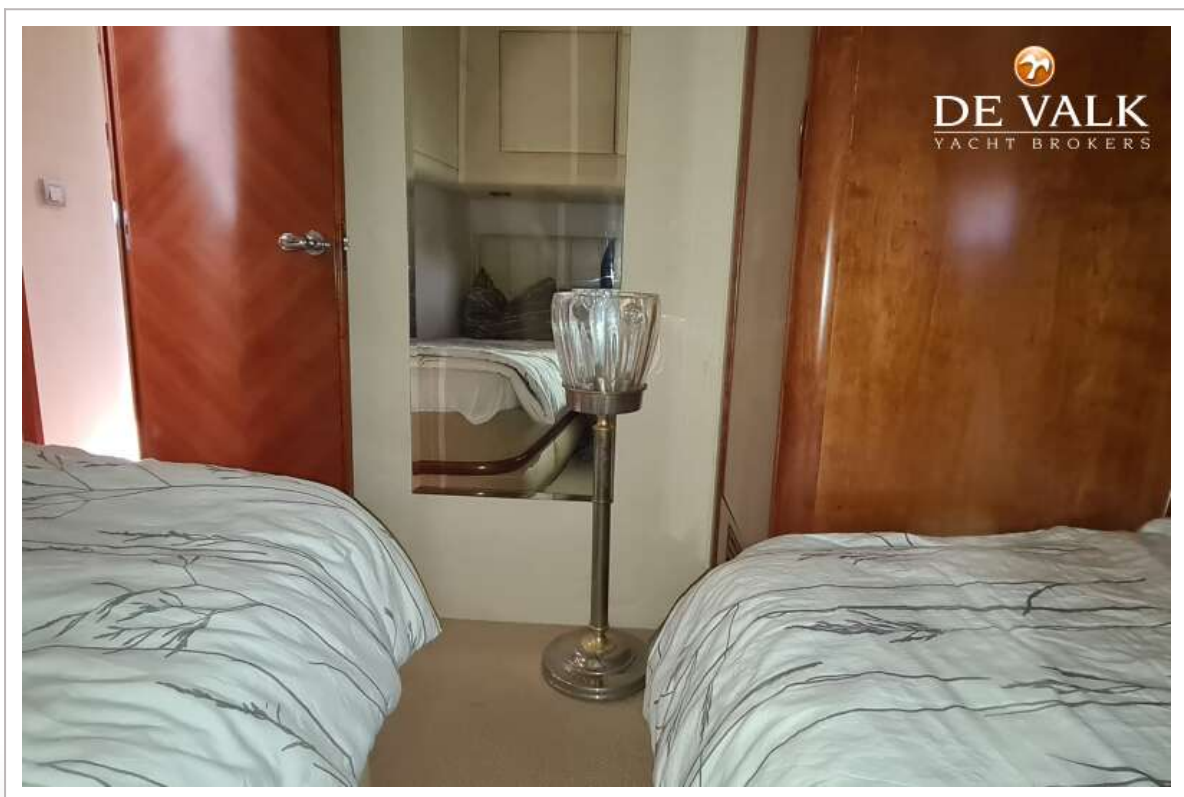
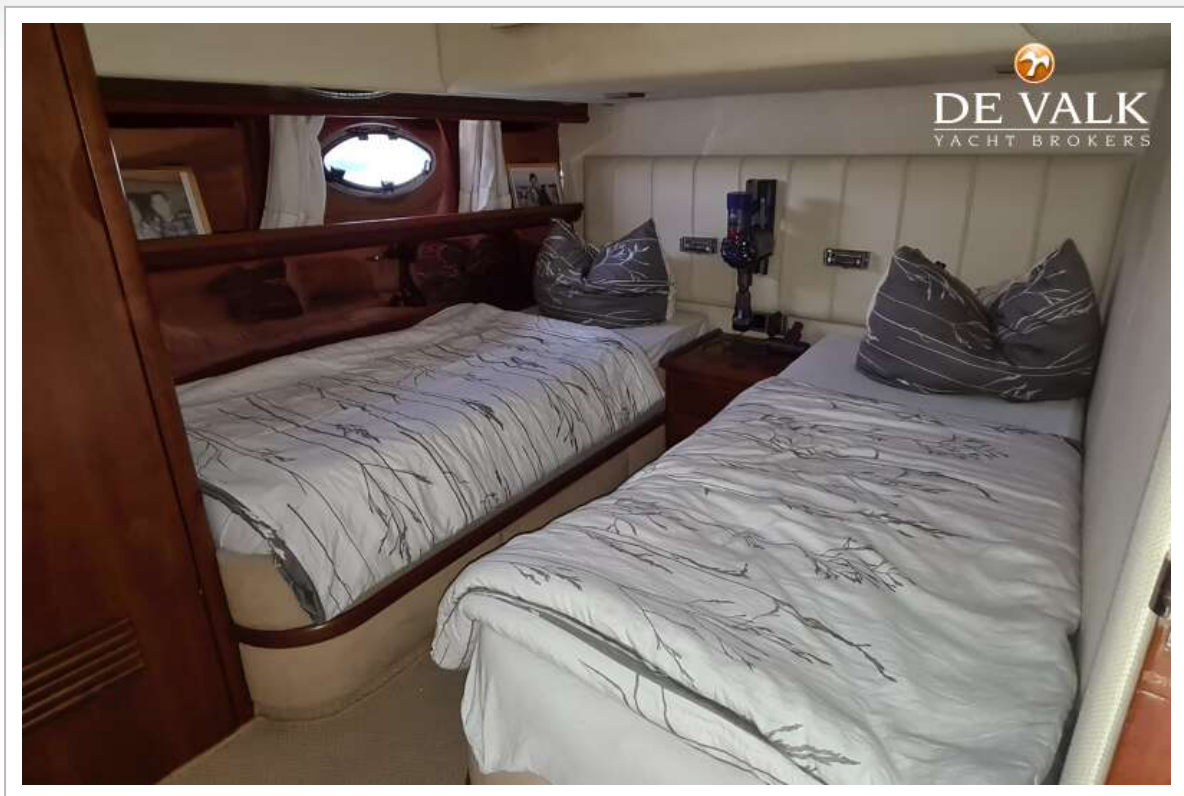
RODMAN 56 MUSE



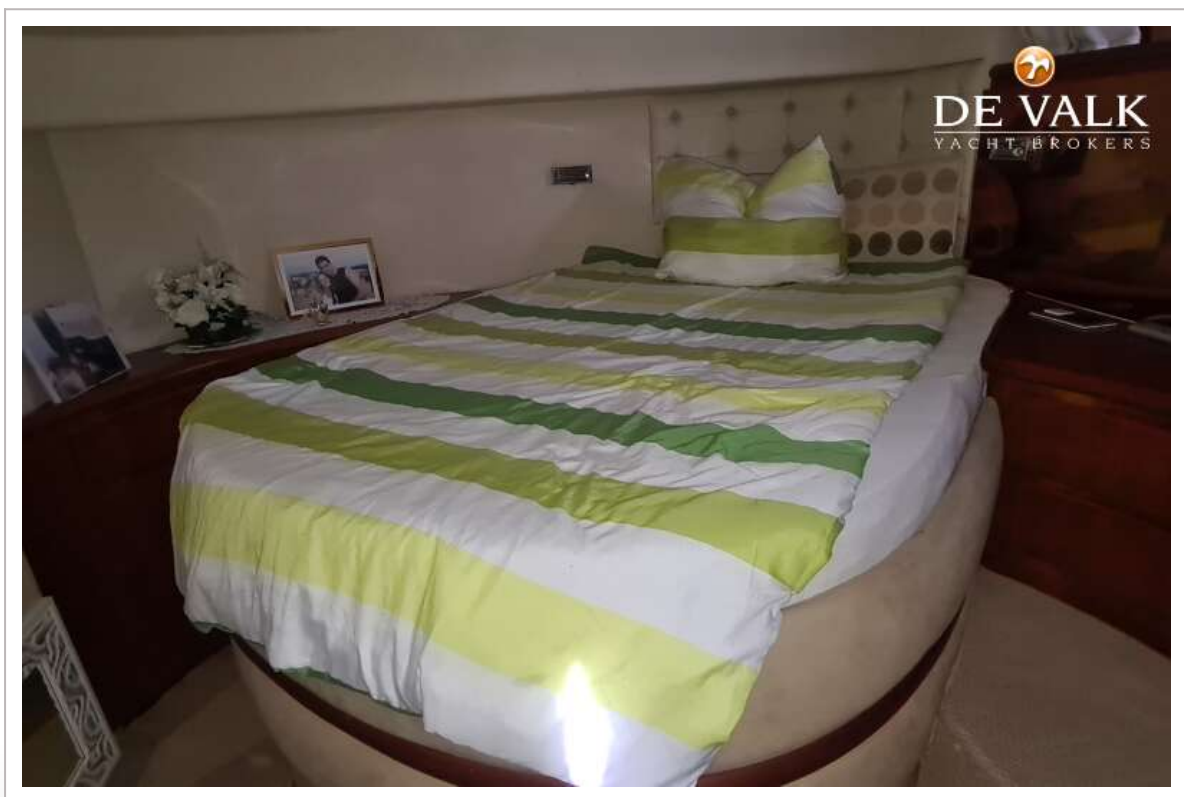
RODMAN 56 MUSE



RODMAN 56 MUSE



RODMAN 56 MUSE



RODMAN 56 MUSE

