



DE VALK  
YACHT BROKERS



TRADER 65



DE VALK  
YACHT BROKERS

BROKERAGE | CHARTER | BERTHS | FINANCE | INSURANCE | YACHT MANAGEMENT

# TRADER 65

## BROKER'S COMMENTS

The Trader 65 is a luxury motoryacht that can accommodate up to 10 people including crew all with individual ensuite facilities and including a full beam master cabin. Fully airconditioned and stabilized she offers all the comfort both in port and en route. The Trader 65 is a strong and reliable blue water cruiser capable of long distance cruising in safety or hosting a large family in port with all the comforts of home. Come and see her in Crete she could also be your ideal live aboard house boat, pontoon mooring only eur. 4500 per year in the city that calls itself the small St Tropez

*Hans Visser*

## SPECIFICATIONS

<b>Dimensions</b>	19.89 x 5.64 x 1.46 (m)	<b>Builder</b>	Tarquin Boat Company
<b>Built</b>	1991	<b>Cabins</b>	5
<b>Material</b>	GRP	<b>Berths</b>	10
<b>Engine(s)</b>	2 x Caterpillar 3208T turbo V8 diesel	<b>Hp/Kw</b>	2 x 425.00 (hp), 312.80 (kw)
<b>Asking price</b>	€ 280.000 (VAT Paid)	<b>Lying</b>	elsewhere / Not at sales office

## CONTACT

<b>Sales office</b>	De Valk Sneek	<b>Telephone</b>	+31 (0)515 42 80 30
<b>Address</b>	Zwolsmanweg 7 8606 KC Sneek NL	<b>E-mail</b>	sneek@devalk.nl

## DISCLAIMER

These particulars are given in good faith as supplied but cannot be guaranteed.



## GENERAL

Model	TRADER 65
Type	motor yacht
LOA (m)	19,89
Beam (m)	5,64
Draft (m)	1,46
Year built	1991
Builder	Tarquin Boat Company
Country	Taiwan
Displacement (t)	36
Hull material	GRP
Hull colour	white With green bands
Hull shape	deep-V
Keel type	long keel
Superstructure material	GRP
Deck material	GRP
Deck finish	teak
Superstructure deck finish	teak
Cockpit deck finish	teak
Insulation	airfoil
Flybridge	yes
Flybridge cockpit cover	yes
Fuel tank (litre)	4550 litres in four tanks (1200 Gallons)
Fuel tank 2 (litre)	yes
Freshwater tank (litre)	polyethylene 1,816 litres in four tanks
Blackwater tank (litre)	454 litres holding tank with macerator
Level indicator (blackwater)	yes
Flybridge helm position	Two swivelling helmsman seats

## ACCOMMODATION

Cabins	5
--------	---



Berths	10
Crew cabin	yes
Crew berths	yes
Interior	Light teak and bleached holly interior
Layout	Owner with crew
Floor	carpet Wilton through lower deck, beige Berber twist on main deck
Aft deck	yes
Pilot house	yes
Deck saloon	yes
Saloon	with custom Maple table and chairs
Headroom saloon (m)	2,10
Heating	yes
Air-conditioning	reverse cycle airco Thourhgout with 5 independent compressors.
Navigation center	At helm
Aft Cabin	Two
Dining room	yes
Sliding door to cockpit	yes
Galley	on-deck level, full width
Countertop	corian
Sink	Marble
Cooker	ceramic 4-ring
Oven	Fan assisted
Microwave	Sharp
Fridge	Ocean
Freezer	Ocean
Hot water system	68 liters, with 3kw immerison and calorifier
Water pressure system	With high-delivery pump
Dishwasher	Whirlpool
Hot water tap	yes
Ice maker	U-line



Coffee maker	Coffee/cappuccino maker
Crockery	yes
Owners cabin	French bed Midship, full width of the boat
Bed length (m)	Queen size
Wardrobe	hanging/drawers/shelves
Bathroom	en suite
Toilet	en suite
Toilet system	electric
Wash basin	in the bathroom Corlan natural onyx worktop, washbasin gold finish lever taps
Shower	en suite
Bath tub	en suite Steam room/Turkish bath and full size bath
Extra info	Three-person sofa finished in pleated silk material
Guest cabin 1	double bed Midship
Bed length (m)	2,05
Wardrobe	hanging and shelves
Bathroom	en suite
Toilet	en suite
Toilet system	electric
Wash basin	in the bathroom Corlan natural onyx worktop and wash bason
Shower	en suite
Guest cabin 2	double bed Aft starboard
Bed length (m)	Queen size
Wardrobe	hanging/drawers/shelves
Bathroom	en suite
Toilet	en suite
Toilet system	electric
Wash basin	in the bathroom Corlan natural onyx worktop, washbasin gold finish lever taps
Shower	en suite
Bath tub	en suite
Extra info	Two-seater sofas finished in buttoned Thai silk



<b>Guest cabin 3</b>	twin single Aft port
<b>Bed length (m)</b>	2,05
<b>Wardrobe</b>	hanging and shelves
<b>Bathroom</b>	en suite
<b>Toilet</b>	en suite
<b>Toilet system</b>	electric
<b>Wash basin</b>	in the bathroom
<b>Shower</b>	en suite
<b>Guest cabin 4</b>	twin single
<b>Bed length (m)</b>	0,70 x 2,10
<b>Wardrobe</b>	hanging/drawers/shelves
<b>Bathroom</b>	ensuite
<b>Toilet</b>	en suite
<b>Toilet system</b>	electric
<b>Wash basin</b>	in the bathroom
<b>Shower</b>	en suite
<b>Extra info</b>	This cabin can also be used as crew cabin
<b>Washing machine</b>	Whirlpool, in aft lobby
<b>Flybridge</b>	with U-shaped seating cushions
<b>Wet bar</b>	with mable worktop, stainless steel sink with hot and cold water, wok burner and electric fryer.

## MACHINERY

<b>No of engines</b>	2
<b>Make</b>	Caterpillar
<b>Type</b>	3208T turbo V8
<b>HP</b>	425
<b>kW</b>	312.80
<b>Fuel</b>	diesel
<b>Maximum speed (kn)</b>	13
<b>Cruising speed (kn)</b>	10



Range (nm)	1200
Engine hours	1700
Engine cooling system	freshwater heat exchanger And sea water
Drive	shaft
Engine controls	hydraulic Hynautic twin lever controls
Gearbox	hydraulic PRM
Bowthruster	hydraulic 20 hp
Propeller type	Bronze
Propeller blades	2x 3
Propeller shaft material	stainless steel
Electric bilge pump	yes
Generator	240v AC 10kw Westerbeke
Generator 2	240v AC 10kw Westerbeke
Batteries	yes
Start battery	yes
Service battery	12 service batteries in 3 banks
Battery monitor	yes
Battery charger	100 & 80 A 24 V & 25A 12 V
Inverter	Sterling 3.5 and 1.9 kw & Victron 1.1 kw
Shorepower	Two 100 amp shore power inlets, midship and aft
Watermaker	Seafresh 64 ltr p/h.
Stabilizers	fin Vosper

## NAVIGATION

Compass	Rigel card compass, Fluxgate compass, Cetrek steering compass
Compass on flybridge	yes
Electric compass	Cetrek
Depth sounder	Cetrek
Log	Cetrek
Repeater	Cetrek



VHF	ICOM transceiver
Autopilot	Cetrek 735
Rudder angle indicator	Cetrek 305
Radar	Furuno 2014 48 nm
GPS	Raytheon & Furuno
Plotter	Cetrek 735
Plotter/GPS	Furuno
Weather receiver	yes
Navtex	ICS
Personal computer	With printer
PC connection	yes
Wifi antenna	yes
Electronic chart(s)	yes
Transmitter	yes
EPIRB	yes

## EQUIPMENT

Sun awning	yes
Cockpit cushions	yes
Bathing platform	yes
Boarding ladder	yes
Transom door	yes
Gangway	yes
Anchor	Danforth 65 lb
Anchor chain	85m of 1/2" chain
Anchor 2	yes
Capstan	yes
Deck wash	Fore and aft pressurised fresh water deckwash
Dinghy	rigid inflatable 4.5m Avo RIB
Outboard	50hp Yamaha
Deck crane	electric 2T jib with 240v AC motor





Sea railing	yes
Grab rail (superstructure)	yes
Pushpit	yes
Pulpit	yes
Life raft	Zodiac
Life raft (pers)	6
Lifejackets	yes
Lifebuoy	yes
Danbuoy	yes
Wiper	yes
Horn	yes
Fenders	with stainless steel racks
Mooring lines	yes
Spare parts	yes
Tools	yes
TV	20"
Radio-cd player	Sony
DVD player	yes
Speakers in salon	yes
Clock - barometer	yes
Fire extinguisher	yes
Extinguisher in engine room	Halon automatic
Auto extinguisher system	yes



# TRADER 65

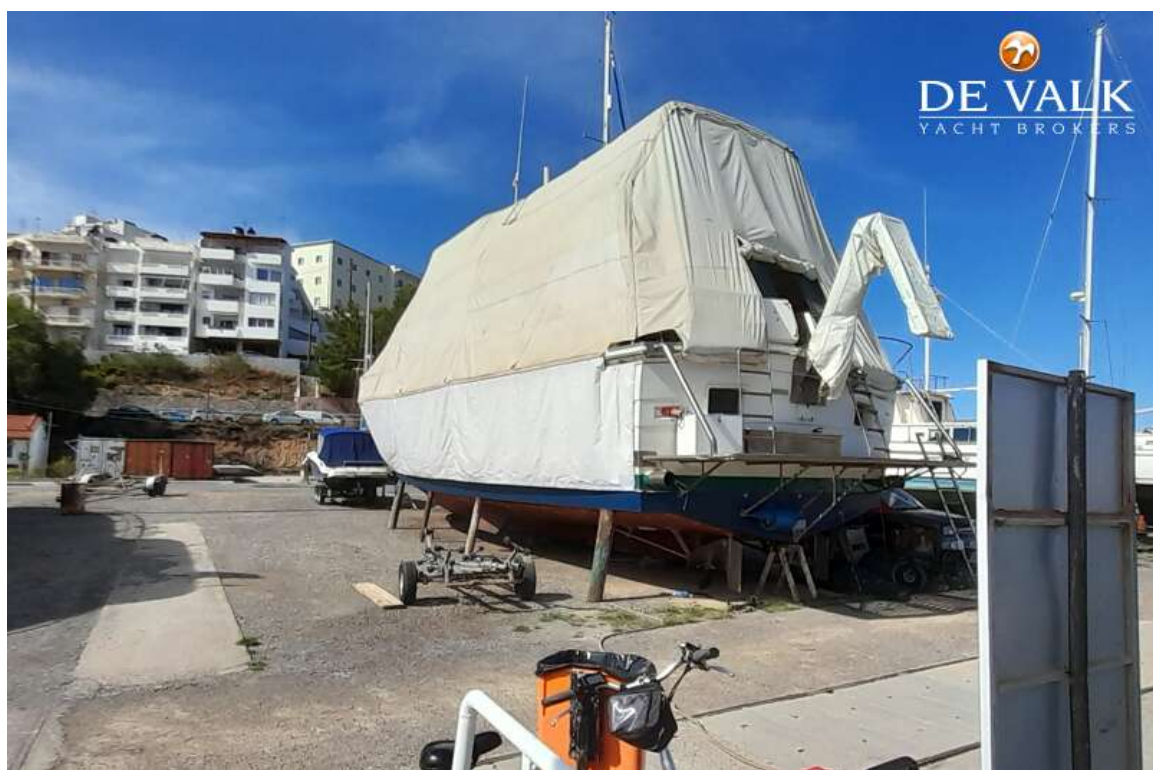


# TRADER 65

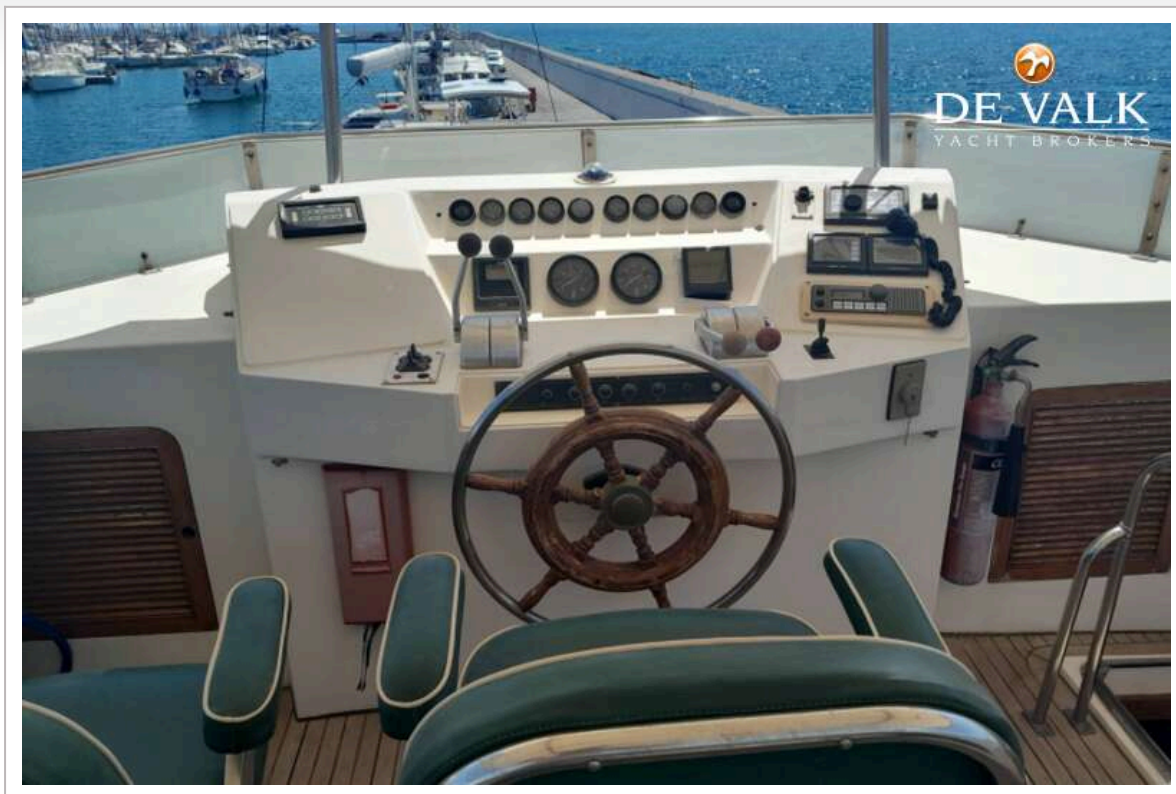




# TRADER 65

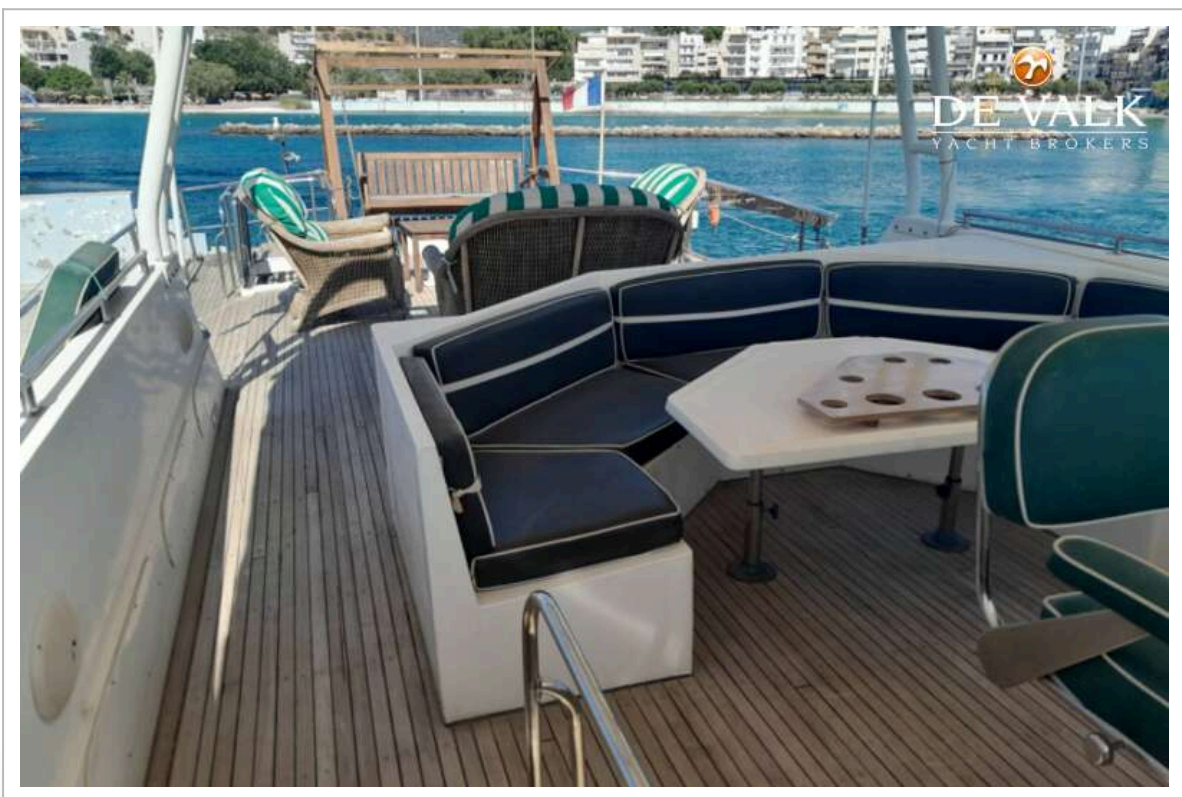
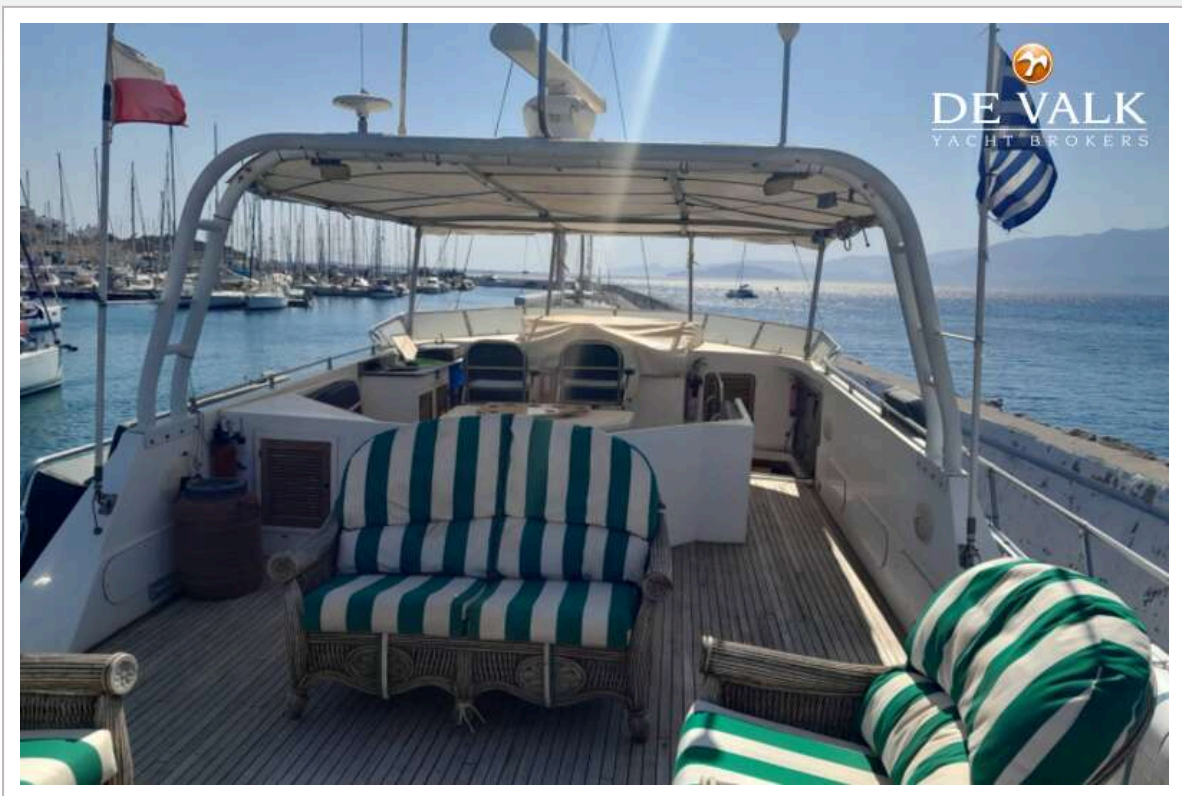


## TRADER 65





# TRADER 65



# TRADER 65









# TRADER 65







## TRADER 65



## TRADER 65





## TRADER 65



## TRADER 65

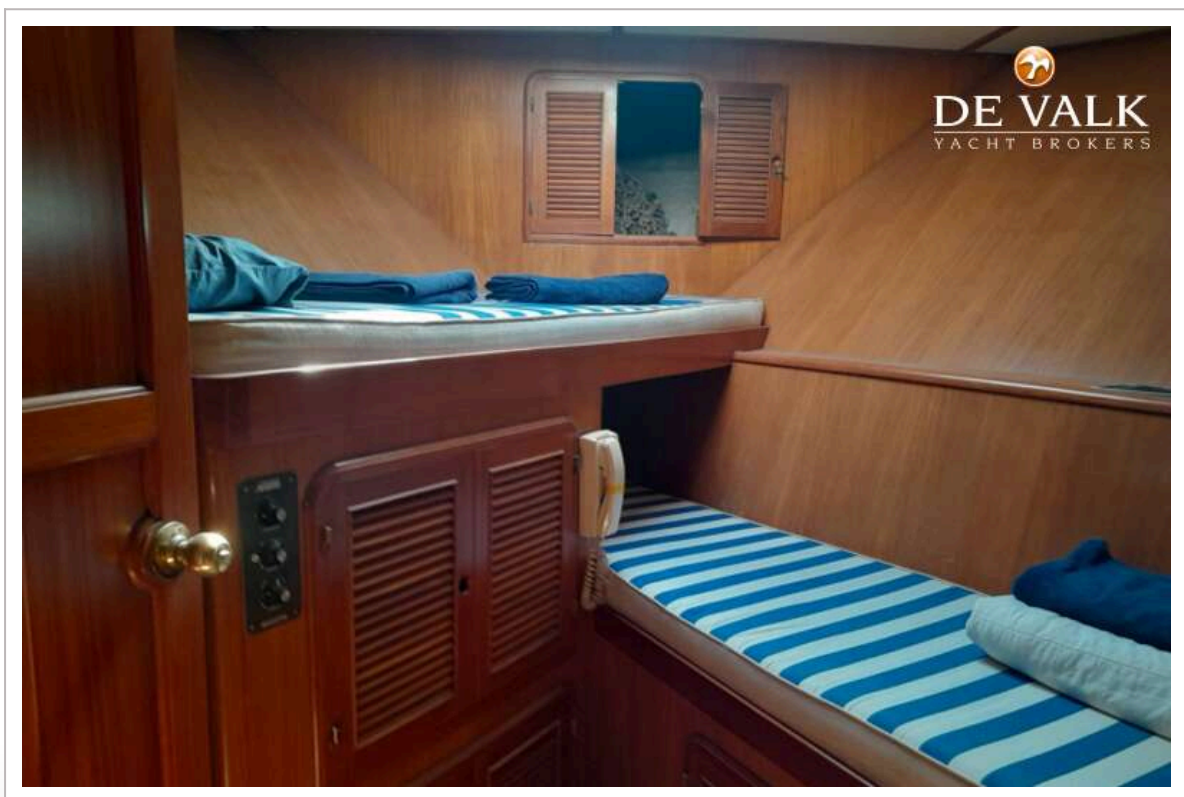
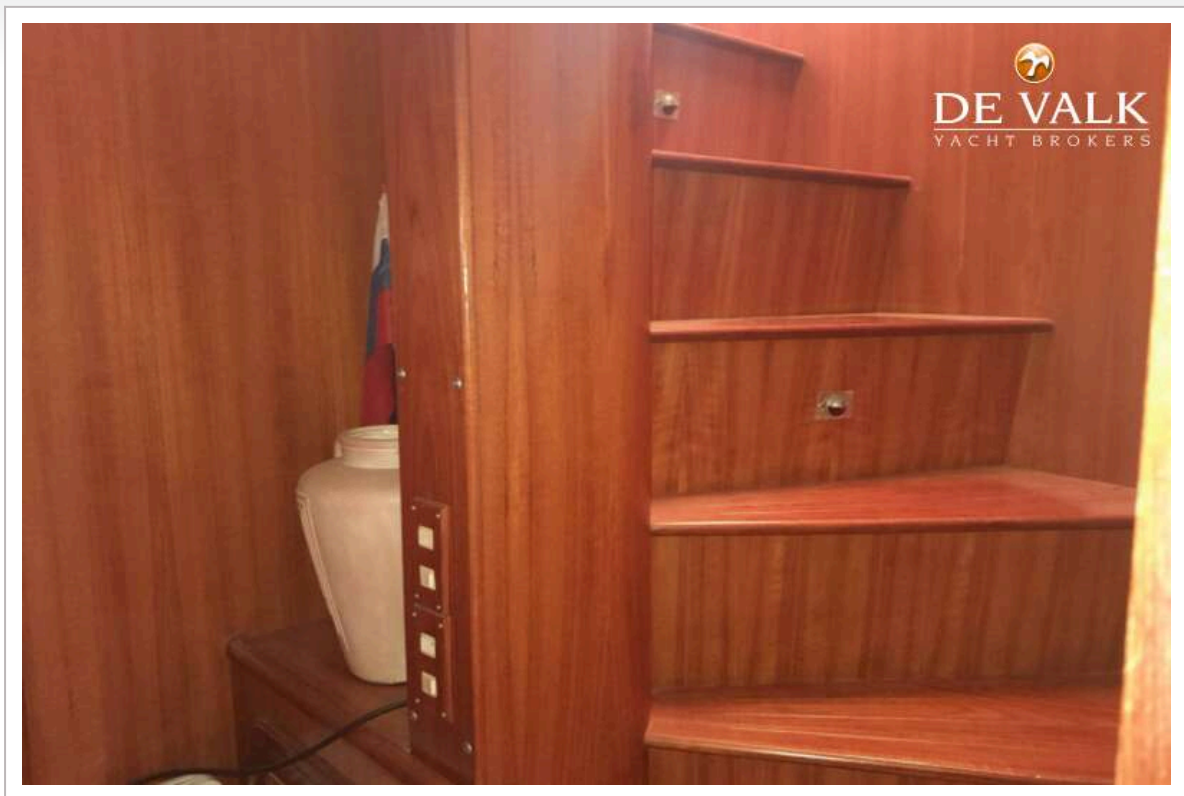




## TRADER 65



## TRADER 65

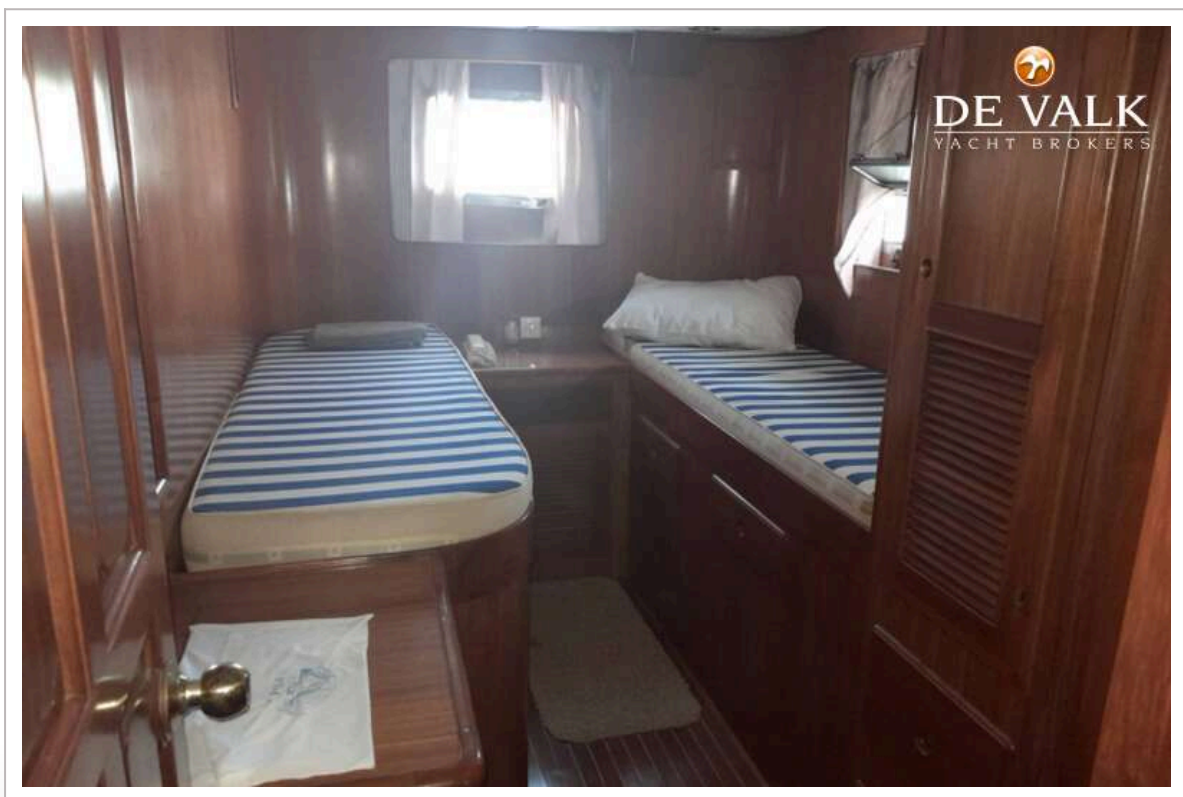


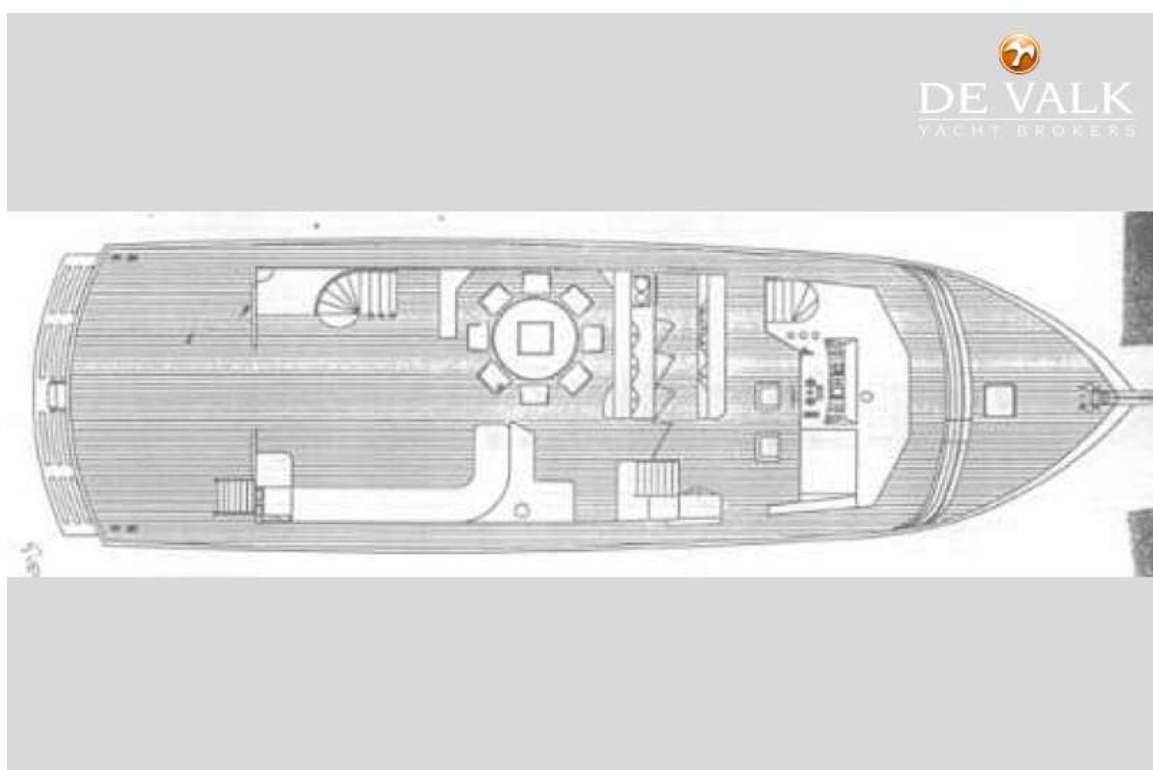
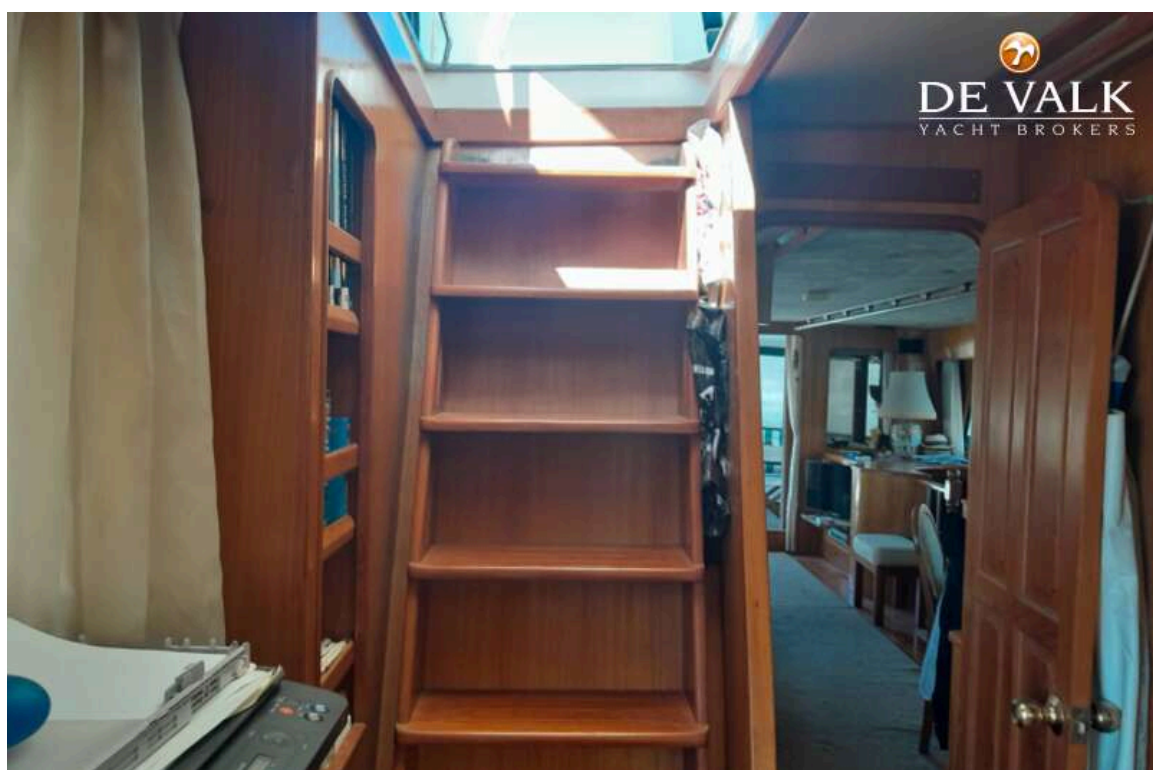


## TRADER 65



## TRADER 65







# TRADER 65

