



DE VALK
YACHT BROKERS



OYSTER 39



DE VALK
YACHT BROKERS

OYSTER 39

BROKER'S COMMENTS

The Oyster 39 was the first yacht designed solely for cruising and is s a high volume, centre cockpit ketch, with a comfortable owner's stateroom aft. She is extremely popular due to her class leading accommodation space, which is remarkable for a yacht of her size. Jacaranda of Fal has only had three owners and her current owner has lovingly refitted her during the last three years with her hull professionally painted and epoxied below the waterline. A full list of updates is available.

Jörg Hellmich

SPECIFICATIONS

Dimensions	11.88 x 3.81 x 1.70 (m)	Builder	Oyster
Built	1980	Cabins	2
Material	GRP	Berths	7
Engine(s)	1 x Perkins 4.236M diesel	Hp/Kw	72.00 (hp), 52.99 (kw)
Asking price	sold (VAT)	Lying	at sales office

CONTACT

Sales office	De Valk Almeria	Telephone	+34 950 497 825
Address	Puerto de Almerimar Darsena de la Batea Almerimar ES	E-mail	almeria@devalk.nl

DISCLAIMER

These particulars are given in good faith as supplied but cannot be guaranteed.



GENERAL

Model	OYSTER 39
Type	sailing yacht
LOA (m)	11,88
LWL (m)	10,16
Beam (m)	3,81
Draft (m)	1,70
Air draft (m)	14,00
Headroom (m)	1,88
Year built	1980
Launched	1982
Builder	Oyster
Country	United Kingdom
Designer	Holman & Pye
Displacement (t)	12
Ballast (tonnes)	cast iron
Gross tonnage	18
CE norm	NA
Hull material	GRP
Hull colour	white
Hull shape	V-shaped hull
Keel type	long keel
Superstructure material	GRP
Deck material	GRP
Deck finish	teak
Superstructure deck finish	teak
Cockpit deck finish	teak
Antifouling (year)	April 2023
Window frame	aluminium
Window material	glass
Deckhatch	yes



Fuel tank (litre)	GRP 450
Freshwater tank (litre)	GRP 900 (2 tanks) interconnected
Blackwater tank (litre)	GRP
Wheel steering	cable steering
Outside helm position	cable steering
Emergency tiller	yes
Extra info	Hull in excellent conditions for her age
Extra info	Keel- 3/4 (three quarters) long keel

ACCOMMODATION

Cabins	2
Berths	7
Interior	mahogany
Floor	wood
Saloon	6 Persons seating
Headroom saloon (m)	1,88
Chart table	yes
Aft Cabin	Owner's cabin
Dinette to convert into berth	yes
Galley	L-shape
Countertop	tiles
Sink	stainless steel Double
Cooker	calor gas
Oven	yes
Gas alarm	yes
Fridge	WAECO Coolmatic
Freezer	Inside fridge
Hot water system	by engine
Water pressure system	electrical
Manual and/or foot pump	yes
Kettle	yes



Hot water tap	yes
Crockery	yes
Owners cabin	double bed
Bed length (m)	2,00 x 1,60
Wardrobe	hanging and shelves
Toilet	en suite
Toilet system	manual
Wash basin	at the toilet
Shower	en suite
Guest cabin 1	v-bed
Bed length (m)	1,90 x 1,50
Wardrobe	hanging and shelves
Toilet	en suite
Toilet system	manual
Wash basin	at the toilet
Toilet	yes
Toilet system	yes

MACHINERY

No of engines	1
Make	Perkins
Type	4.236M
HP	72
kW	52.99
Fuel	diesel
Year installed	1980
Maximum speed (kn)	7
Cruising speed (kn)	5
Consumption (l/hr)	3,5
Range (nm)	500
Engine hours	4124



Engine cooling system	freshwater heat exchanger
Drive	shaft
Shaft seal	November 2022
Gearbox	hydraulic Borg Warner velvet drive
Exhaust	watercooled
Propeller type	fixed Bronze with 1 spare onboard
Propeller blades	Two
Propeller shaft material	Bronze
Shaft lubrication	water
Manual bilge pump	yes
Electric bilge pump	yes
Electrical installation	12V & 24V system
Generator	Elem technic 1000s (not in commission)
Start battery	2 x 105 Ah/12V New (acid)
Service battery	4 x 110 Ah/12V New (gel)
Battery monitor	Adverc
Battery charger	Adverc
Inverter	Victron 24v (350 Va)
Wind generator	Primus 24v Air Breeze 160w
Solar panel	Victron 12v 100w Photonic 12v 100w
Shorepower	with cable 230V
Watermaker	Spectra 150 (reconditioning 2015) 24 L/Hr, pickled
Extra info	Victron Converter 24V-12V (for 12V service)
Extra info	Fast Charger Mastervolt 2014 (for Shorepower)

NAVIGATION

Compass	yes
Depth sounder/log	Raymarine i50 (2015)
Windset	Raytheon ST60i
VHF	Standard Horizon GX1700E (2016)
Autopilot	Raymarine S1000 plus (2023)



Wind vane steering install.	Hydrovane (2014)
Radar	Raymarine hsb 2 plus
GPS	Garmin158i 2014 - connects to Laptop
Navtex	NASA Navtex Pro Plus
AIS receiver	Nasa (2012)
EPIRB	ACR Global Fix Pro 2014 (needs new battery)
Navigation lights	LED (except steaming lights)
Extra info	SSB (HF) Tx/Rx Icom 718 USB & LSB SCS Pactor 3 modem
Extra info	Grab Bag ACR with EPIRB

EQUIPMENT

Sprayhood	yes
Cockpit cover	yes
Bimini	yes
Sun awning	yes
Winter cover	yes
Cockpit cushions	yes
Cockpit table	yes
Boarding ladder	yes
Gangway	Woodplank
Anchor	Rocna
Anchor chain	50m/10mm (sound & heavy) + 20m nylon rope
Anchor 2	Bruce (cable below stern berth)
Anchor chain	20m/10mm
Windlass	electrical Lofrans 24V, 1000w
Dinghy	Neptune PVC 2017 (2,5m)
Outboard	Yanmar 2.5 Hp 2016
Outboard support	yes
Davits	aluminum
Davits controls	manual
Sea railing	wire



Railing side opening gates	yes
Pushpit	yes
Pulpit	yes
Life raft	SEAGO (2014)
Life raft (pers)	4
Last life raft survey	03/2023
Lifejackets	SEAGO 4 (2014)
Safety lines on deck	2 lines (2014)
Fenders	yes
Mooring lines	yes
Spare parts	Ample
Tools	Ample
Clock - barometer	yes
Fire extinguisher	3 x Anafur (2019)

RIGGING

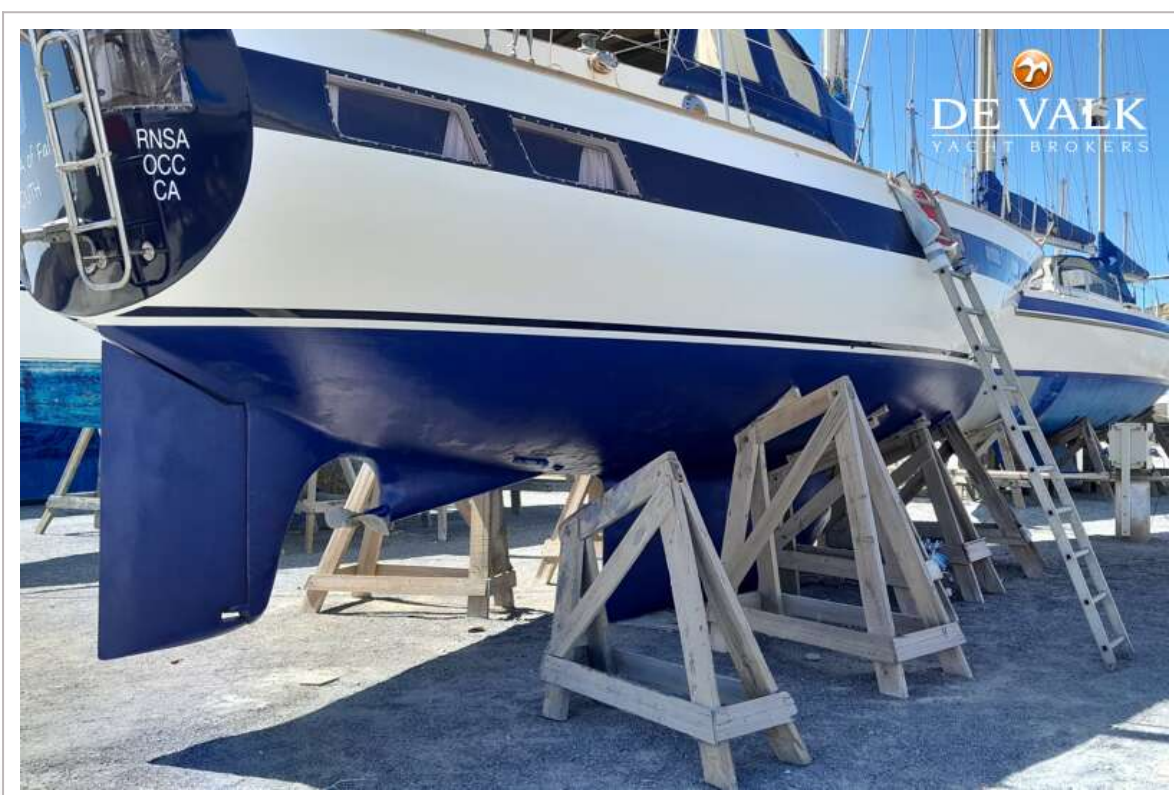
Rigging	ketch 2014
Standing rigging	wire
Material mast	aluminium
Spreaders	1 set
Mainsail	New 2023
Battcars	Sliders
Mizzen	Good condition
Genoa I	New 2023 (135%)
Genoa II	2005 (150% Good condition)
Genoa furler	Furlex New 2023
Spinnaker	Standard
Stormjib	1981
Reefing System	slabreefing
Primary sheet winch	Lewmar 48 3 speed (cockpit)
Secondary sheet winch	Lewmar 16 2 speed



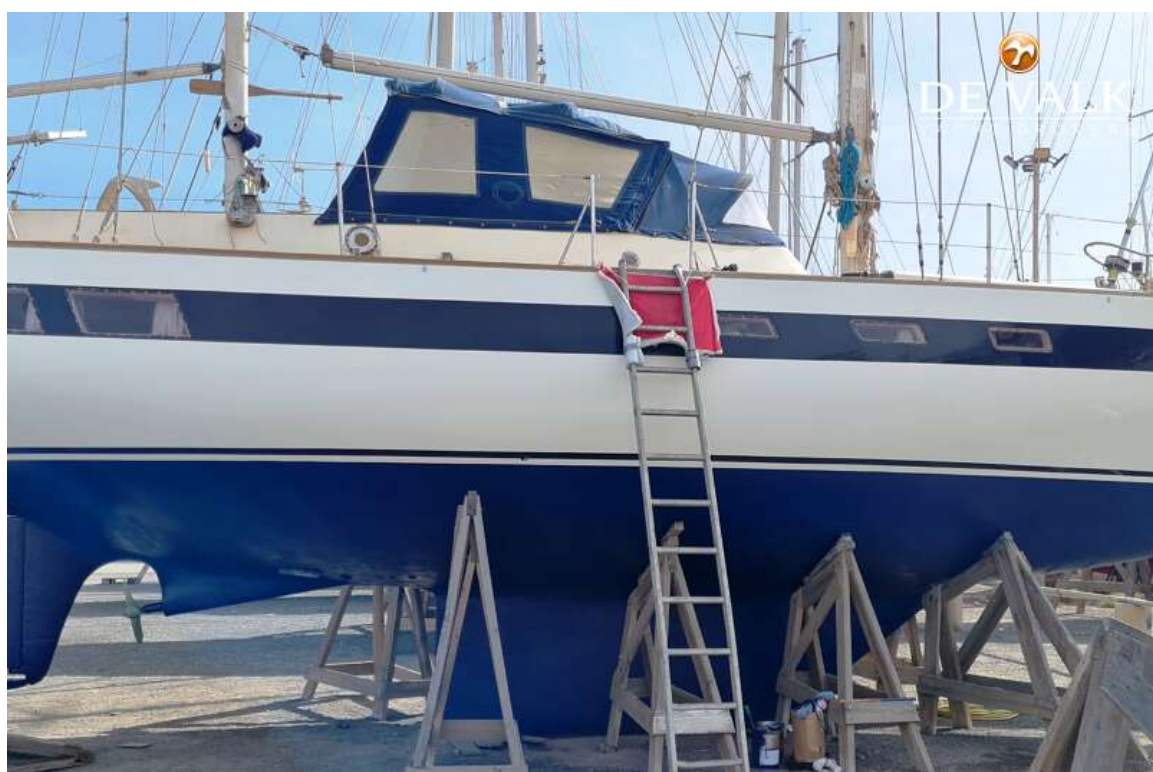
Halyard winches	Main Lewmar 30 2 speed Mizzen Lewmar 8 single speed
Multifunctional winches	Mast boom Lewmar 8 single speed
Winchcovers	yes
Spi-pole	aluminium
Extra info	Lazyjacks (Mainsail) extensive covers
Extra info	Main Sail 2 in fair condition

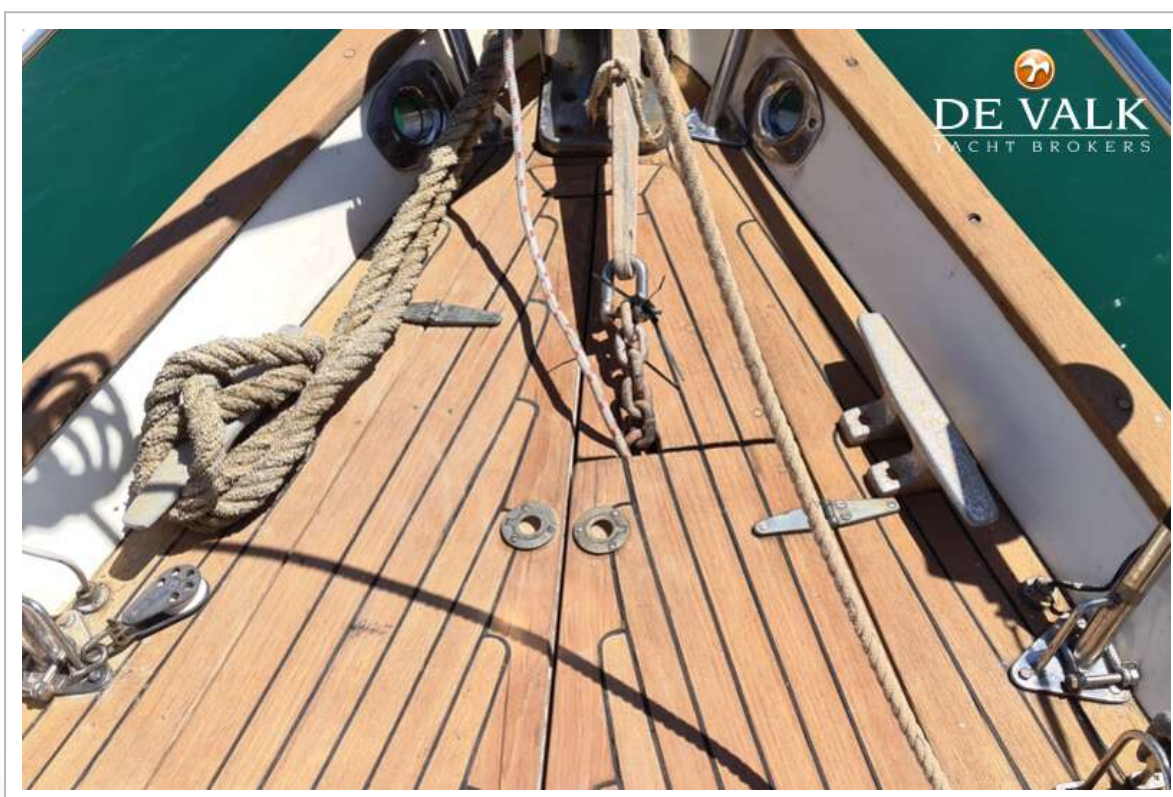


OYSTER 39

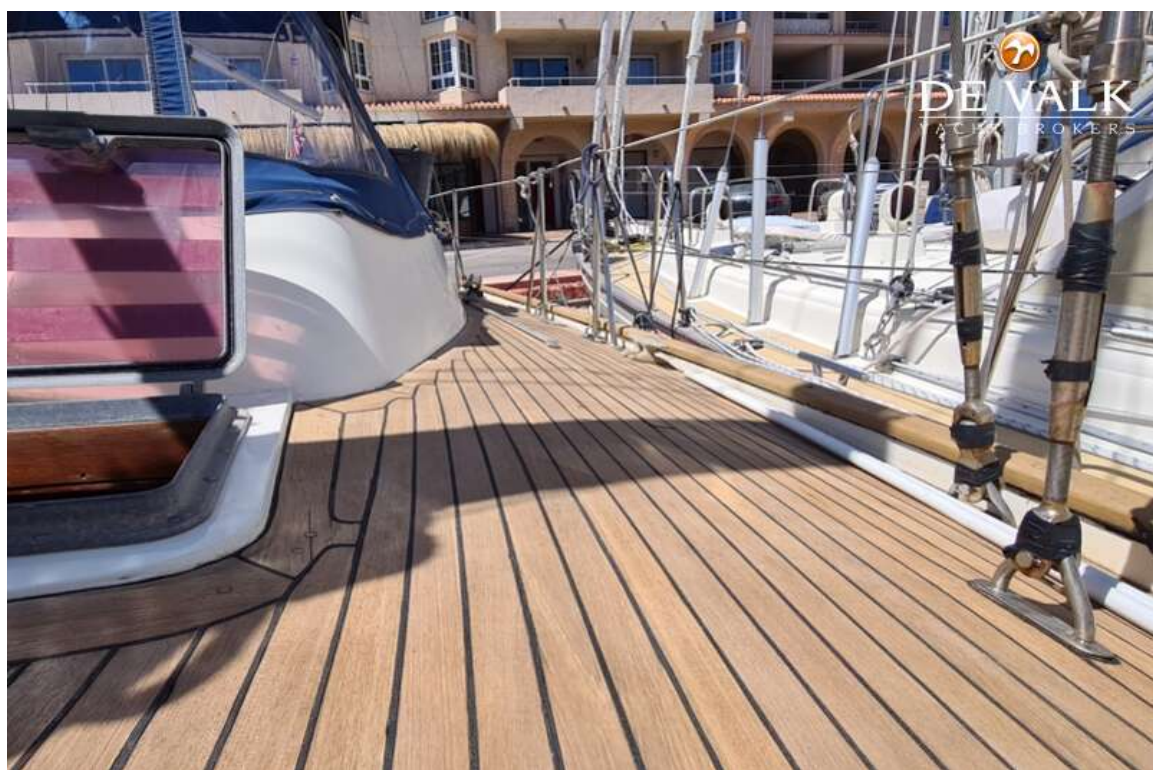


OYSTER 39

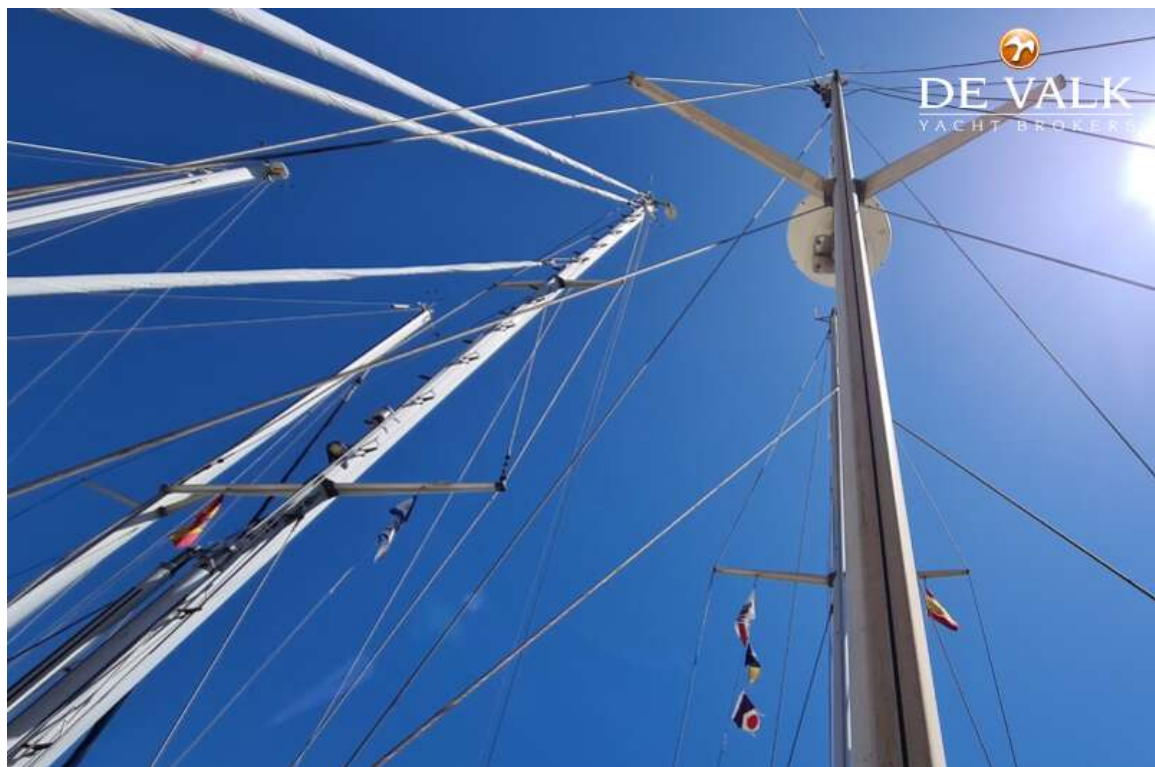




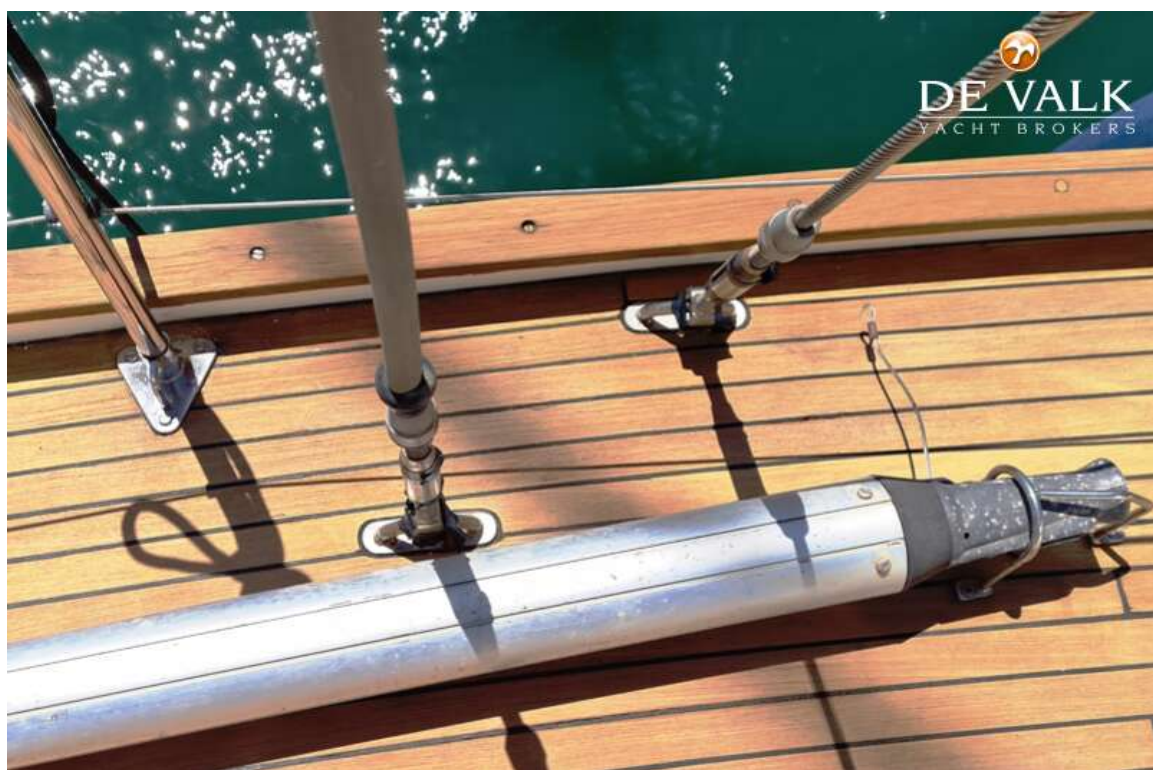
OYSTER 39



OYSTER 39



OYSTER 39



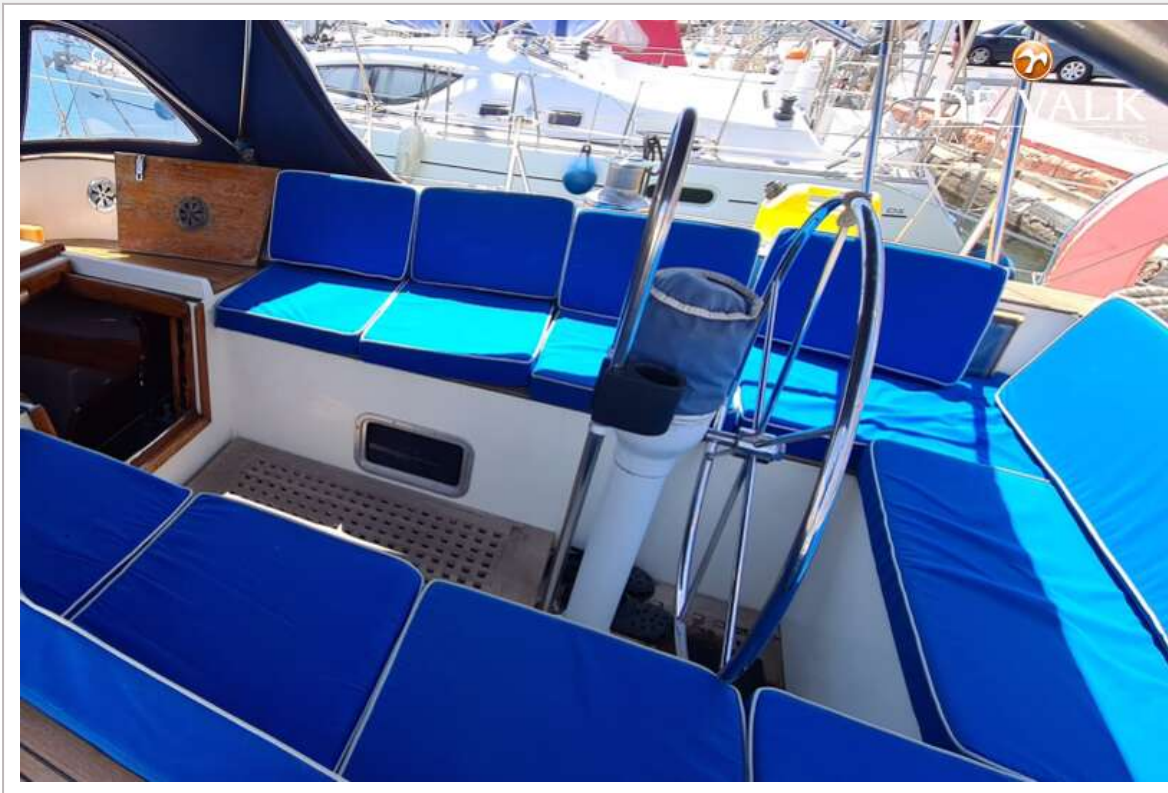
OYSTER 39



OYSTER 39



OYSTER 39



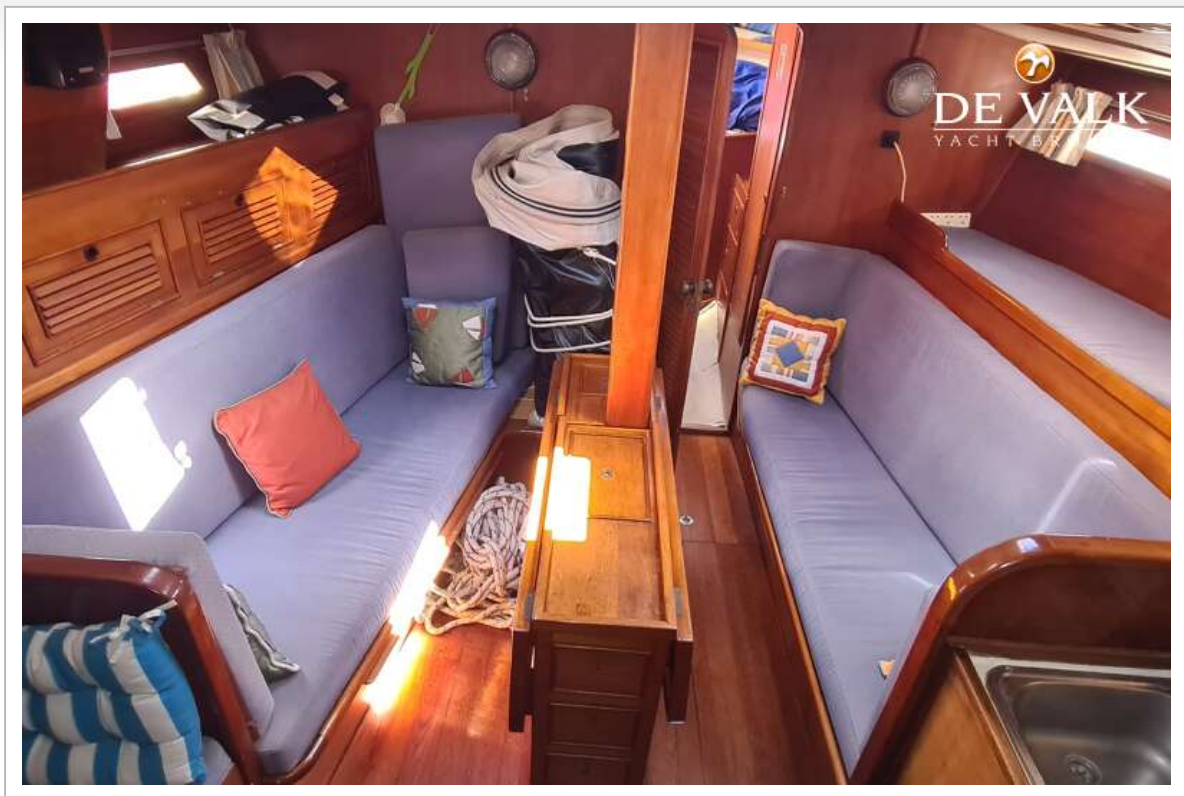
OYSTER 39



OYSTER 39



OYSTER 39

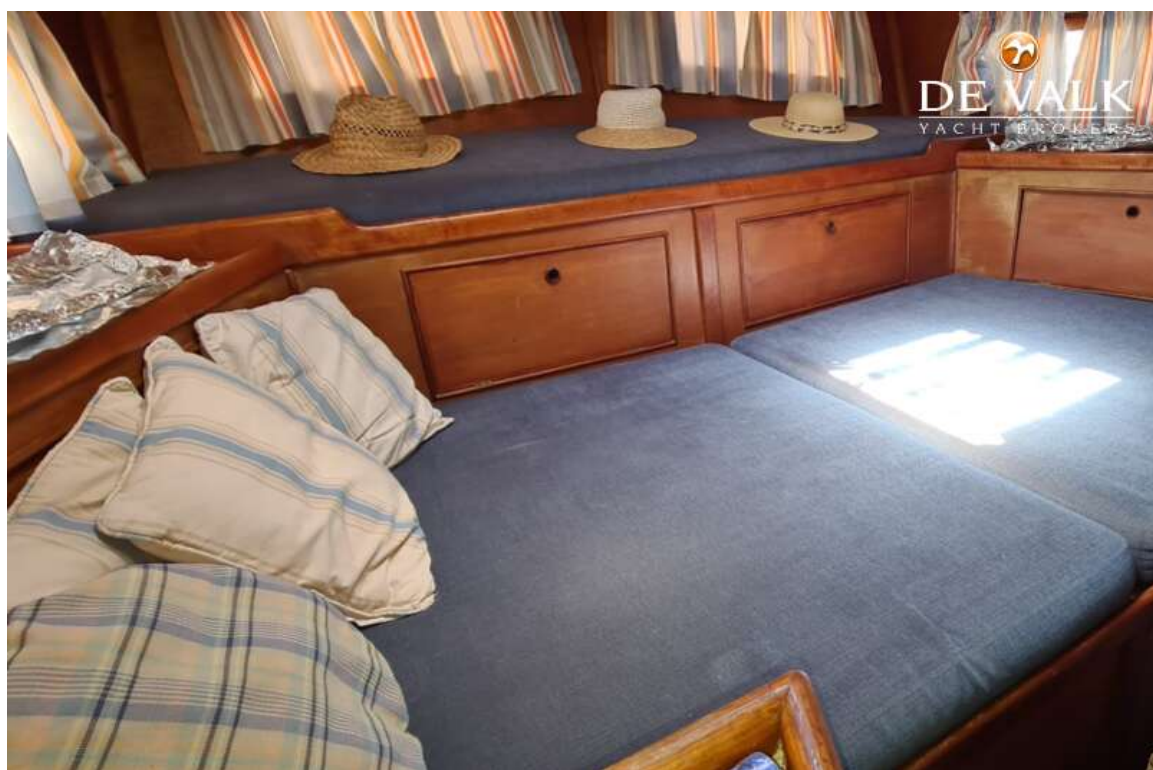




OYSTER 39



OYSTER 39



OYSTER 39

