



DE VALK

YACHT BROKERS



BROOM 425



DE VALK
YACHT BROKERS

BROKERAGE | CHARTER | BERTHS | FINANCE | INSURANCE | YACHT MANAGEMENT

BROOM 425

BROKER'S COMMENTS

The Broom 425 was built at the famous C.J. Broom & Sons shipyard. This Broom is very well equipped and maintained by her current owner. Equipped With 1 strong engine and bow and stern thruster makes her economical and easy to maneuver. The interior is spacious and with 2 cabins, each with their own bathroom makes Broom 425 ideal for family and friends. She is now ready for a visit nearby our sales office in Sint Annaland on appointment.

Joris van de Rijt

SPECIFICATIONS

Dimensions	13.20 x 4.24 x 1.06 (m)	Builder	C.J. Broom & Sons Ltd.
Built	2009	Cabins	2
Material	GRP	Berths	4
Engine(s)	1 x Volvo Penta D6-370 diesel	Hp/Kw	370.00 (hp), 272.32 (kw)
Asking price	sold (VAT)	Lying	elsewhere / Not at sales office

CONTACT

Sales office	De Valk Sint Annaland B.V.	Telephone	+31 (0)166 601 000
Address	Koelhuisweg 4 4697 RM Sint Annaland NL	E-mail	sintannaland@devalk.nl

DISCLAIMER

These particulars are given in good faith as supplied but cannot be guaranteed.



GENERAL

Model	BROOM 425
Type	motor yacht
LOA (m)	13,20
LWL (m)	11,49
Beam (m)	4,24
Draft (m)	1,06
Air draft min (m)	3,30
Headroom (m)	1,95
Year built	2009
Builder	C.J. Broom & Sons Ltd.
Country	United Kingdom
Designer	Andrew Wolstenholme
Displacement (t)	13
CE norm	B
Hull material	GRP
Hull colour	white
Hull shape	deep-V
Superstructure material	GRP
Rubbing strake	rubber
Deck material	GRP
Deck finish	teak
Superstructure deck finish	non-skid moulded in
Cockpit deck finish	teak
Antifouling (year)	2024
Window material	tempered glass
Deckhatch	yes
Portholes	yes
Radar arch	collapsible
Mast can be lowered	electric
Fuel tank (litre)	2 x 420



Level indicator (fuel tank)	yes
Freshwater tank (litre)	454
Blackwater tank (litre)	yes
Blackwater tank extraction	deck extraction + uw line
Wheel steering	hydraulic

ACCOMMODATION

Cabins	2
Berths	4
Interior	cherry
Floor	carpet + teak and holly
Deck saloon	yes
Saloon	yes
Headroom saloon (m)	1,95
Heating	diesel ducted hot air Eberspacher
Aft Cabin	yes
Dinette	yes
Galley	yes
Countertop	Duropal
Sink	stainless steel
Cooker	calor gas Eno 3 burner
Extractor	yes
Microwave	Bosch
Fridge	Waeco with freezer compartment
Hot water system	220V + engine
Water pressure system	electrical
Dishwasher	Bosch
Owners cabin	French bed
Bed length (m)	1,85 x 1,60
Wardrobe	hanging/drawers/shelves
Bathroom	yes



Toilet	en suite
Toilet system	electric Jabsco
Wash basin	in the bathroom
Shower	en suite
Guest cabin 1	twin single
Bed length (m)	2 x 1,90 x 0,70
Wardrobe	hanging/drawers/shelves
Toilet	en suite
Toilet system	electric Jabsco
Wash basin	in the bathroom
Shower	en suite
Washing machine/dryer combi	Bosch

MACHINERY

No of engines	1
Make	Volvo Penta
Type	D6-370
HP	370
kW	272.32
Fuel	diesel
Year installed	2009
Maximum speed (kn)	18
Engine hours	2217
Engine cooling system	freshwater heat exchanger
Drive	shaft
Engine controls	electrical Volvo Penta
Gearbox	yes
Bowthruster	electric Vetus
Sternthruster	electric Vetus
Propeller type	fixed
Propeller blades	4



Propeller shaft material	stainless steel
Manual bilge pump	yes
Electric bilge pump	yes
Electrical installation	12V/220V
Generator	Fisher Panda 4.5 ND (3.8 kW)
Running hours generator	379
Start battery	(new 2022)
Service battery	(new 2022)
Bowthruster battery	(new 2022)
Sternthruster battery	(new 2022)
Battery monitor	Mastervolt
Battery charger/inverter	Mastervolt Mass Combi 12/2000-100
Shorepower	with cable
Trimtabs	Fixed
Extra info	Last maintenance engine + generator 2023

NAVIGATION

Compass	Plastimo
Depth sounder	Raymarine ST60+
Log	Raymarine ST60+
VHF	Raymarine
Autopilot	Raymarine ST6002
Rudder angle indicator	yes
Radar	Raymarine
Plotter	Raymarine E120
Electronic chart(s)	yes
Navigation lights	yes
Searchlight	yes

EQUIPMENT

Fixed windscreen	yes
------------------	-----



Cockpit cover	Blue
Cockpit cushions	yes
Cockpit table	yes
Bathing platform	yes
Boarding ladder	stainless steel
Deck shower	Hot & cold
Anchor	Delta
Anchor chain	yes
Windlass	electrical Lewmar
Sea railing	stainless steel
Grab rail (superstructure)	stainless steel
Railing side opening gates	2 x
Lifebuoy	yes
Wiper	2 x
Fenders	yes
Mooring lines	yes
TV	Dual in saloon
Radio-cd player	yes
Cockpit speakers	yes
Speakers in salon	yes
Clock - barometer	yes
Fire extinguisher	yes
Extinguisher in engine room	yes



BROOM 425



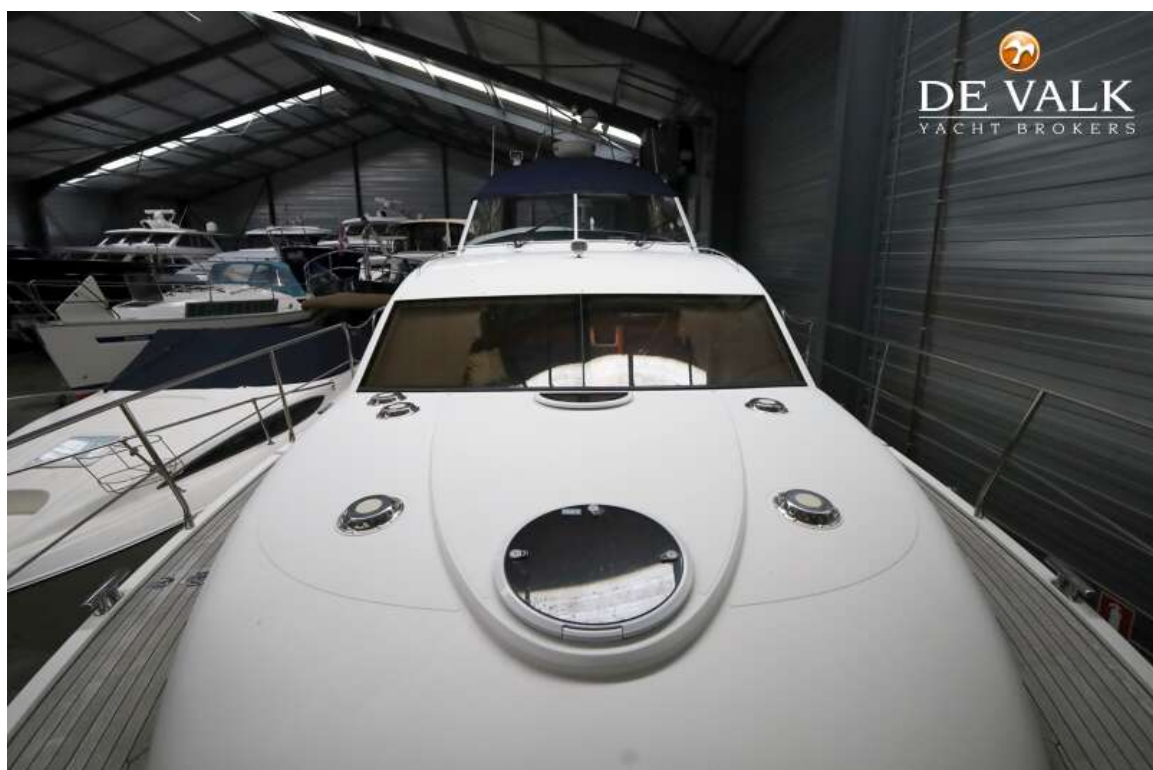
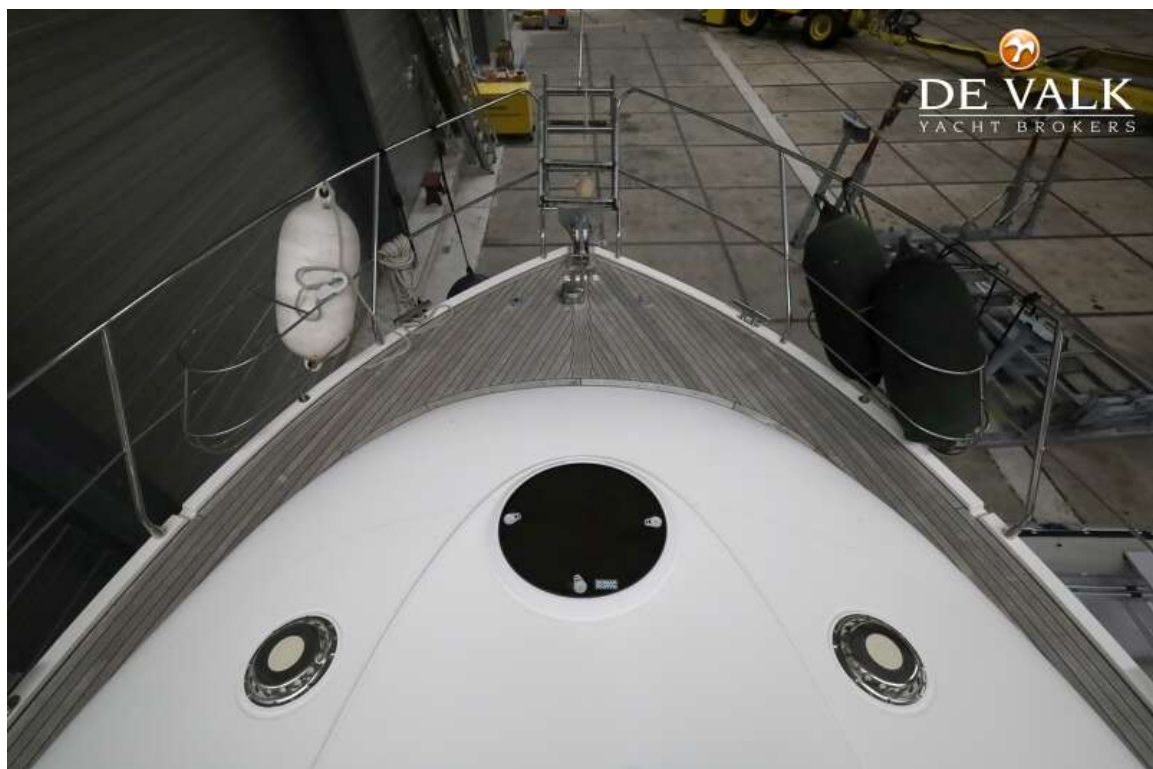
BROOM 425



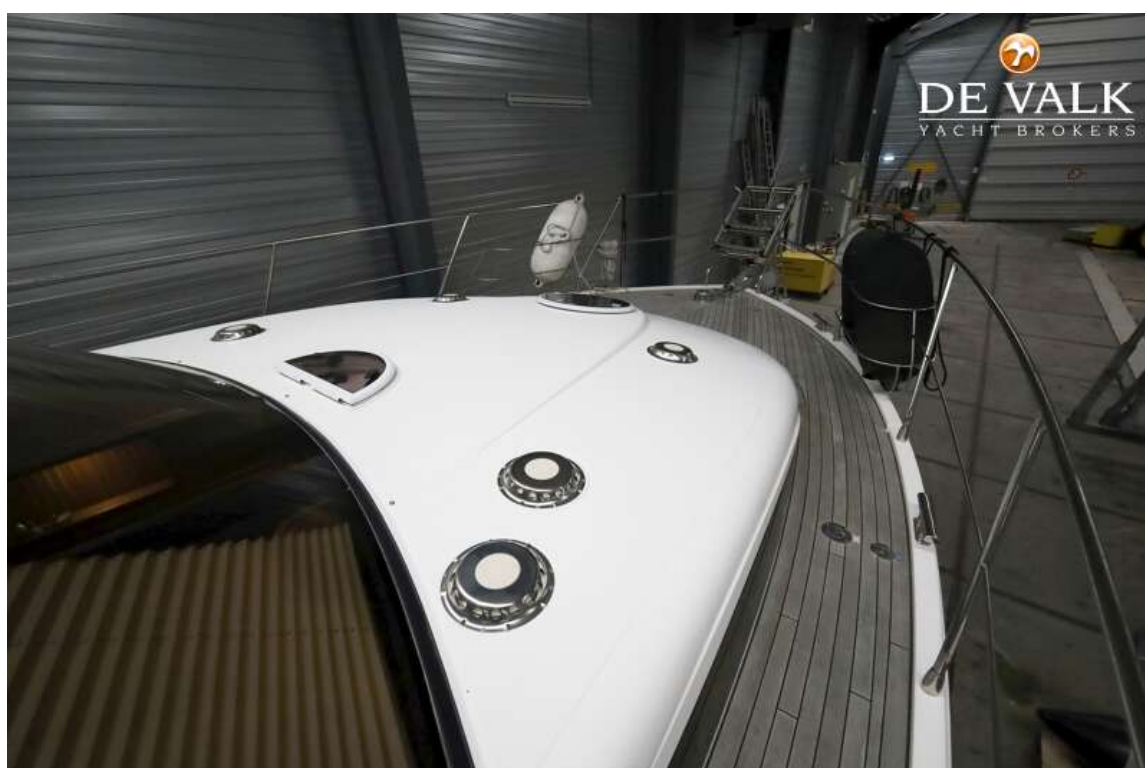
BROOM 425



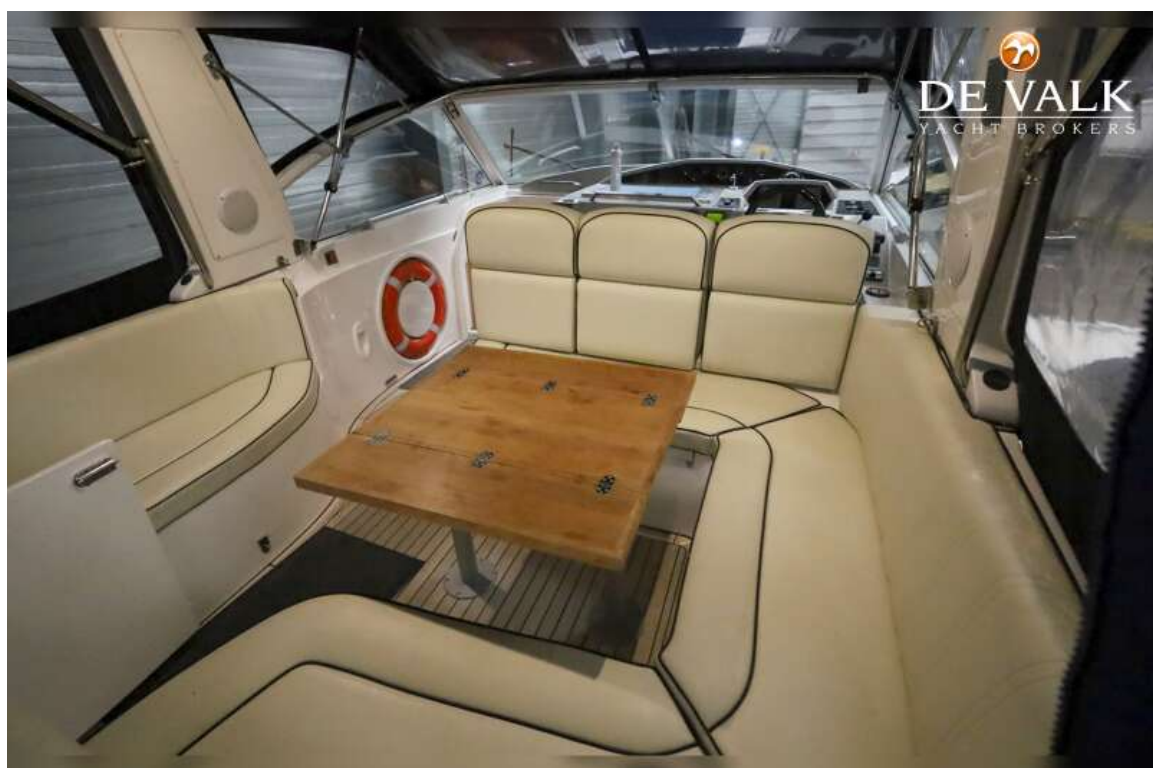
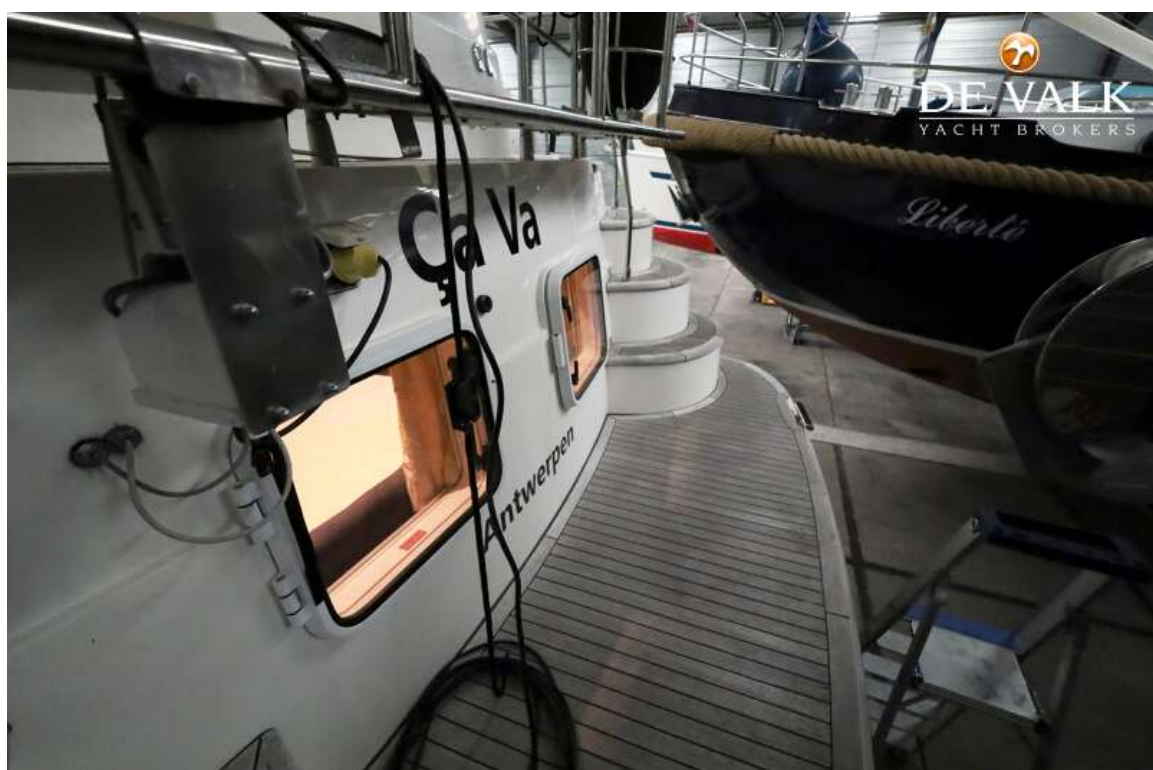
BROOM 425



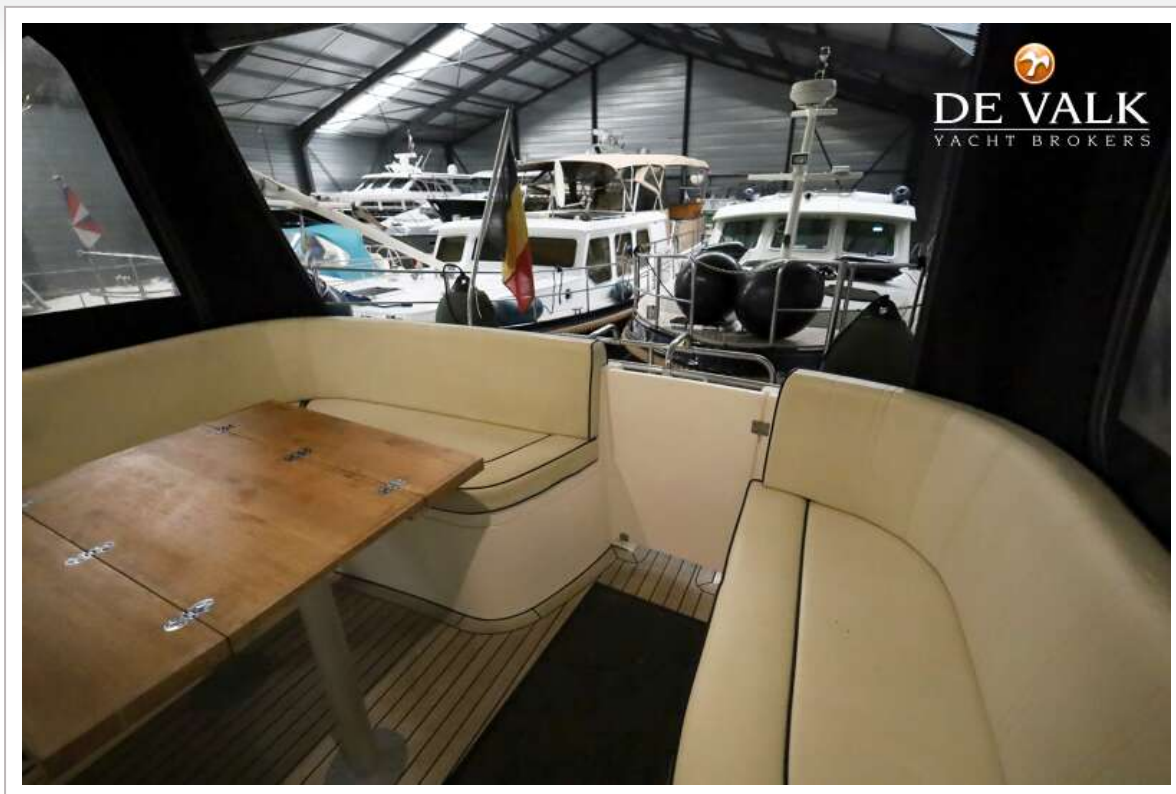
BROOM 425



BROOM 425



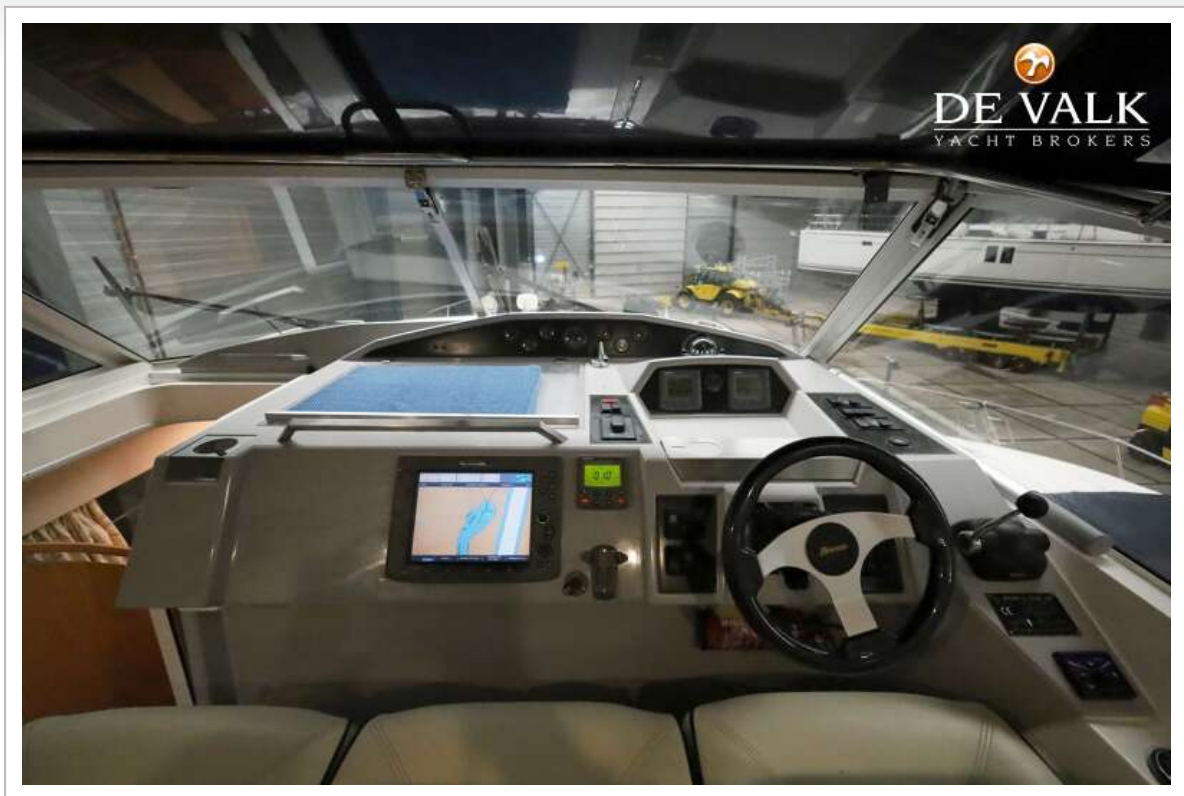
BROOM 425



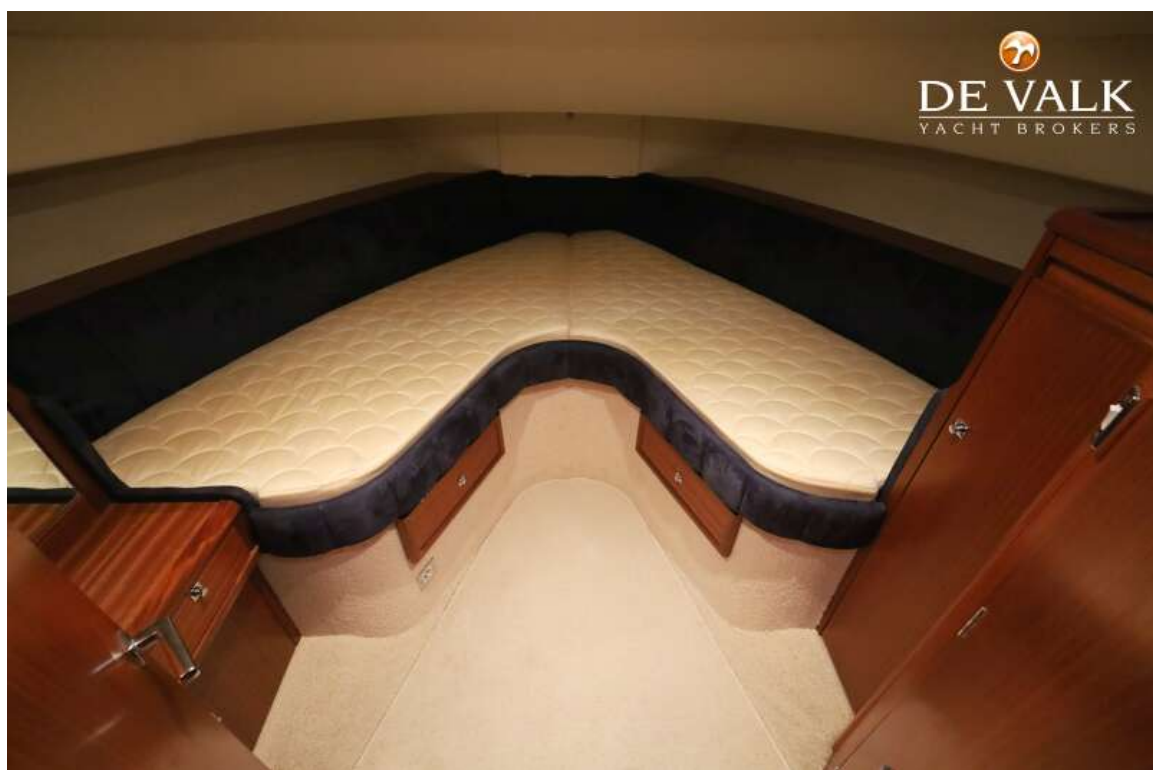
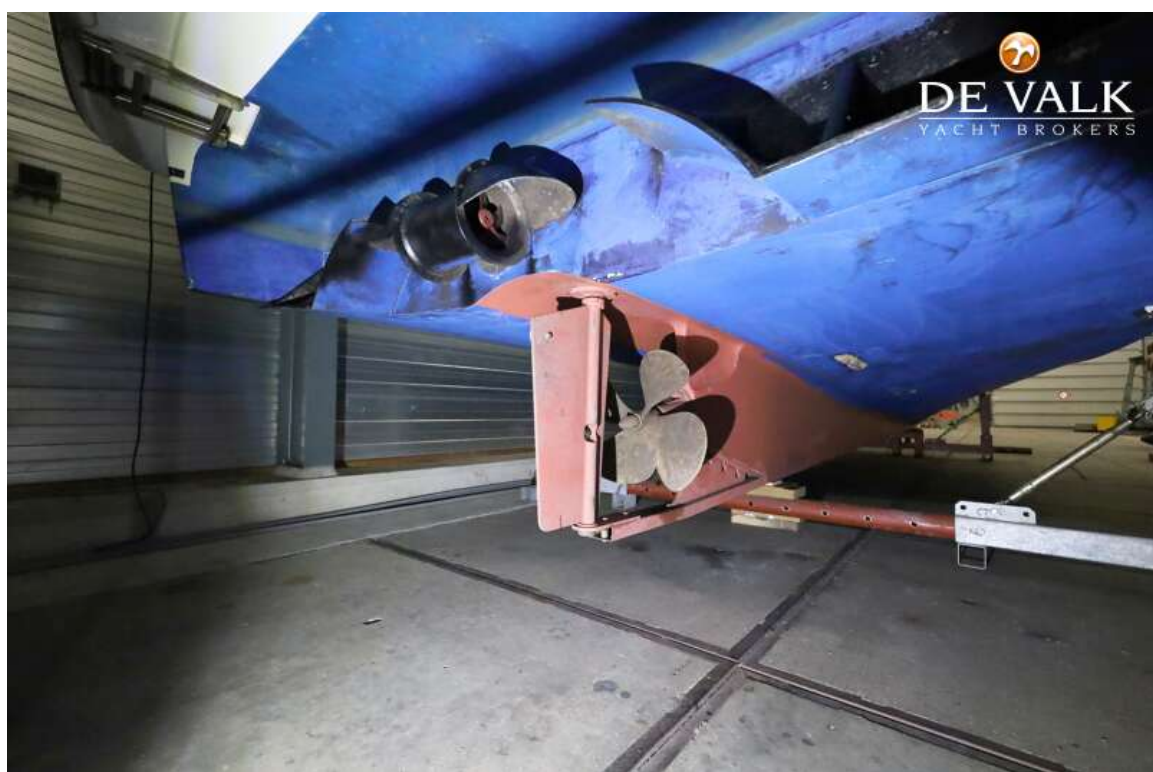
BROOM 425



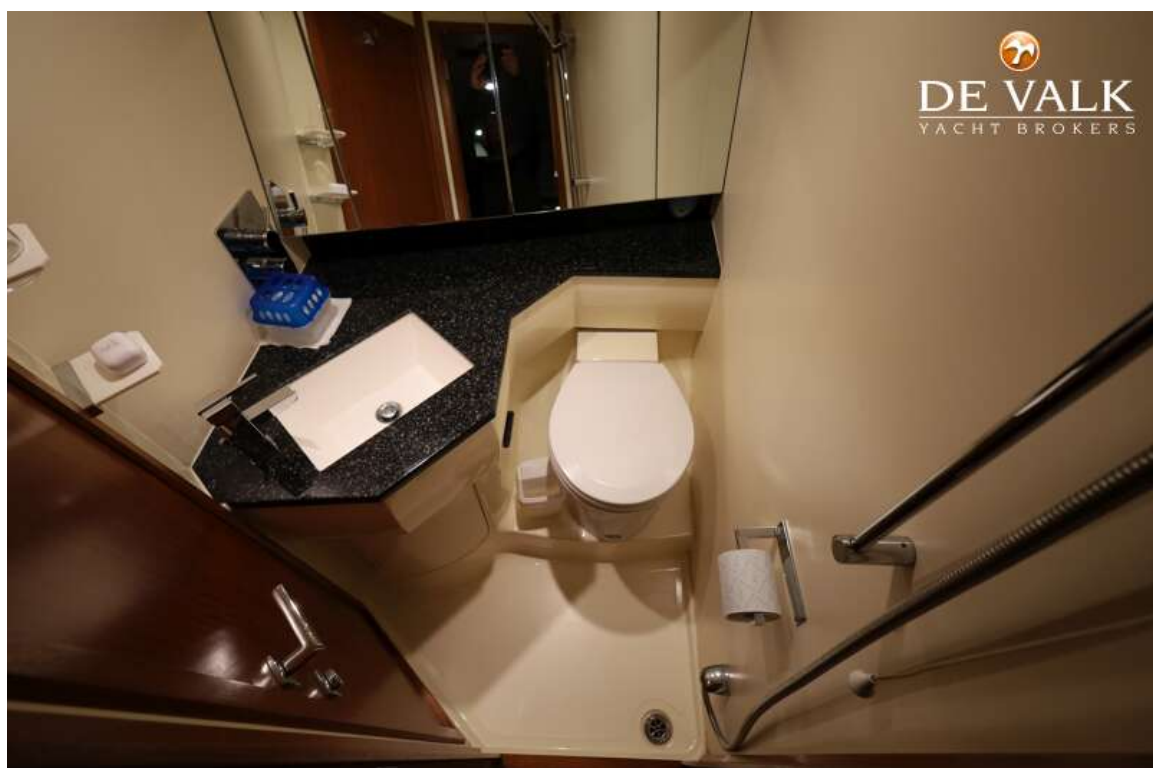
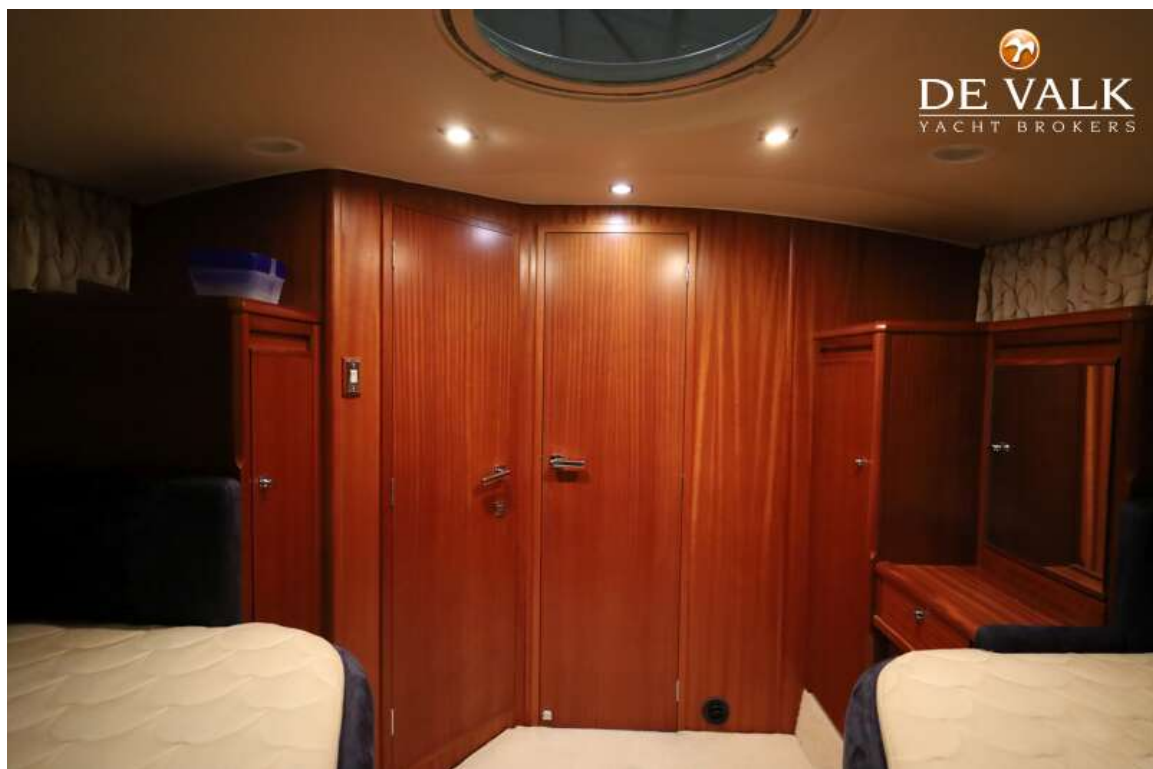
BROOM 425



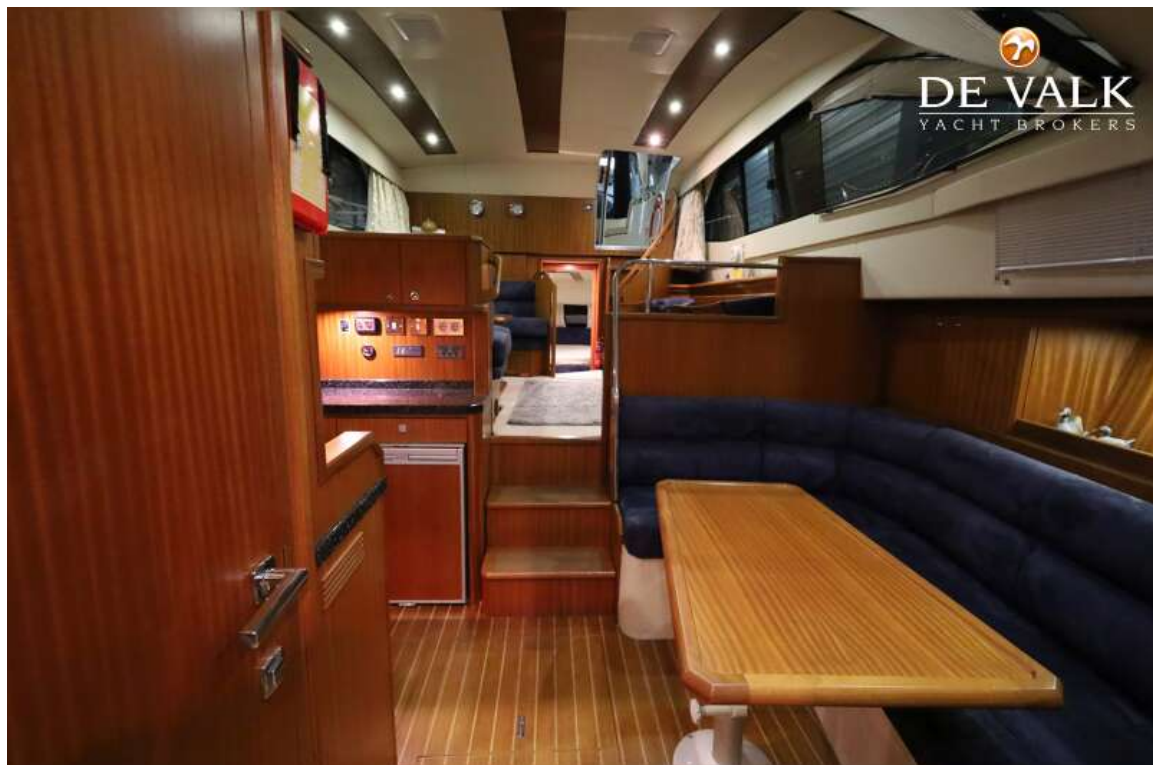
BROOM 425



BROOM 425



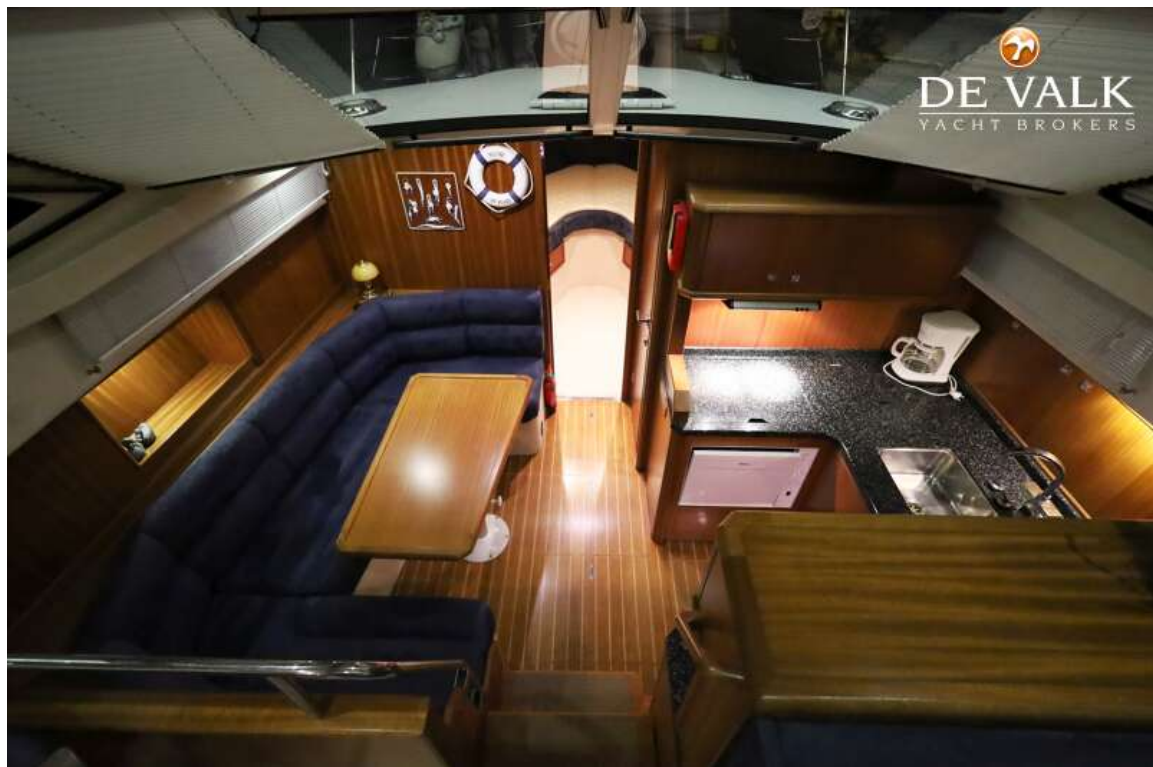
BROOM 425



BROOM 425



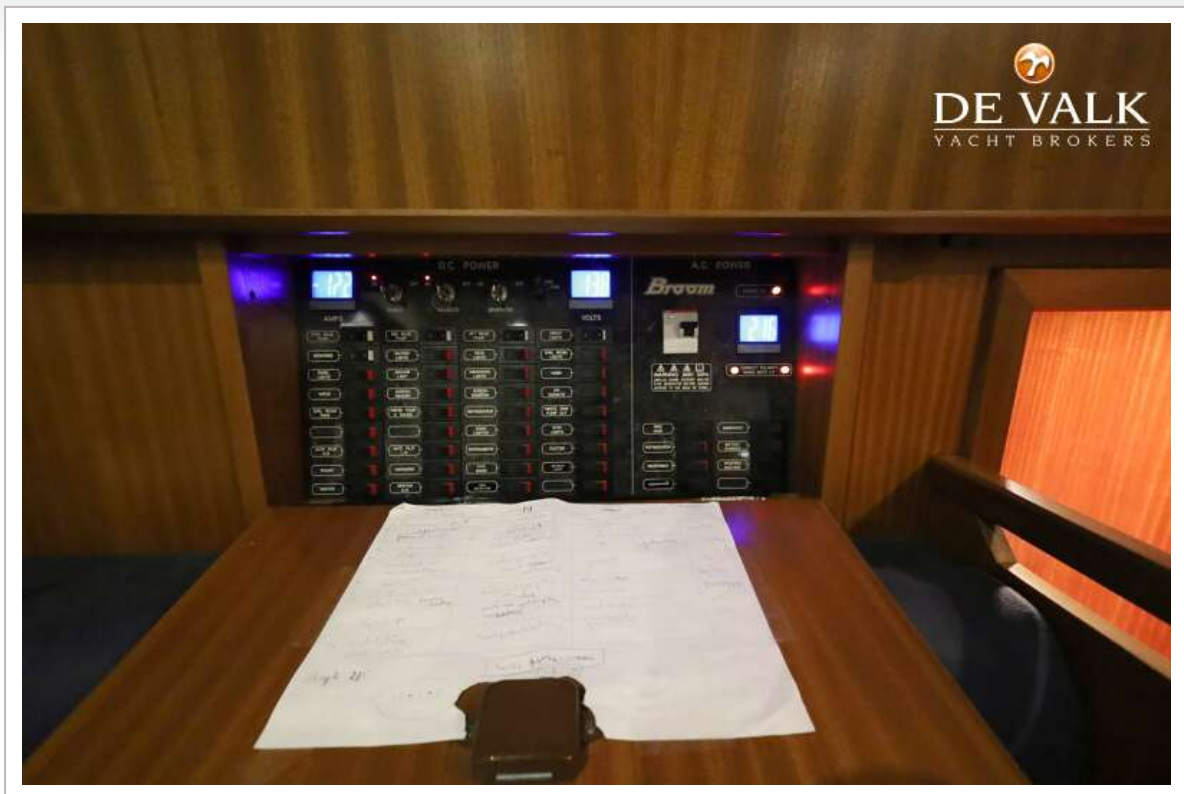
BROOM 425



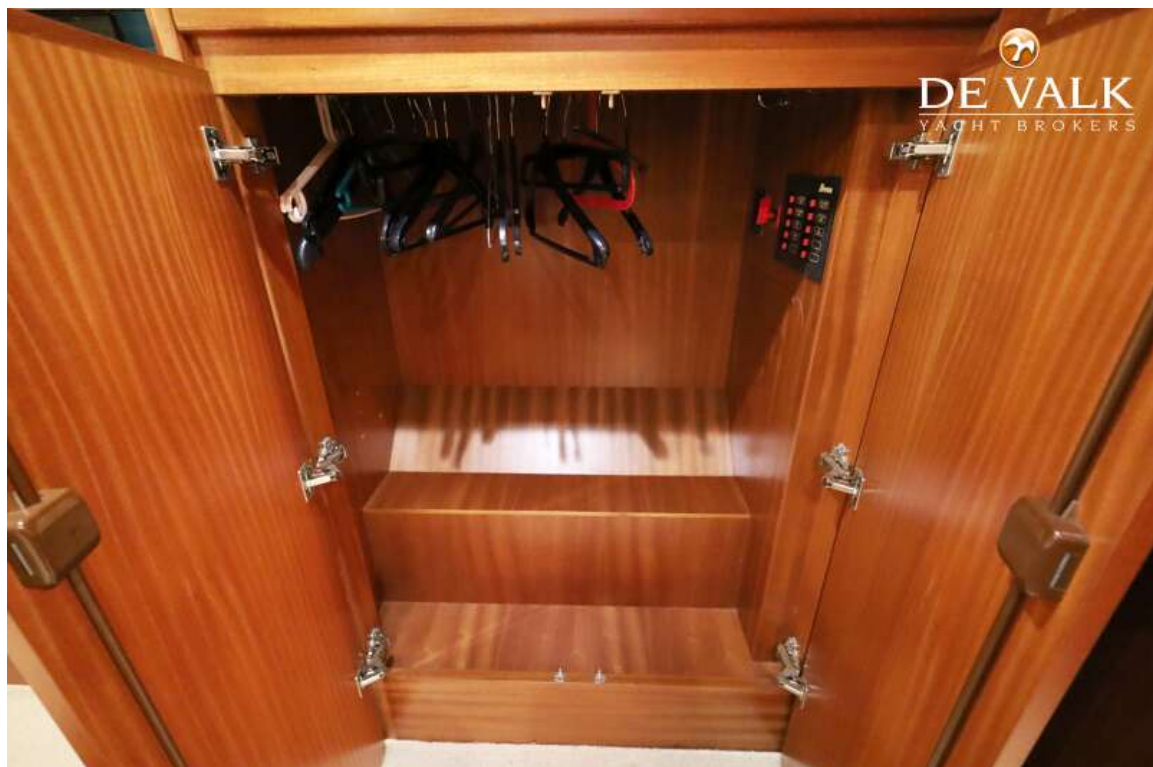
BROOM 425

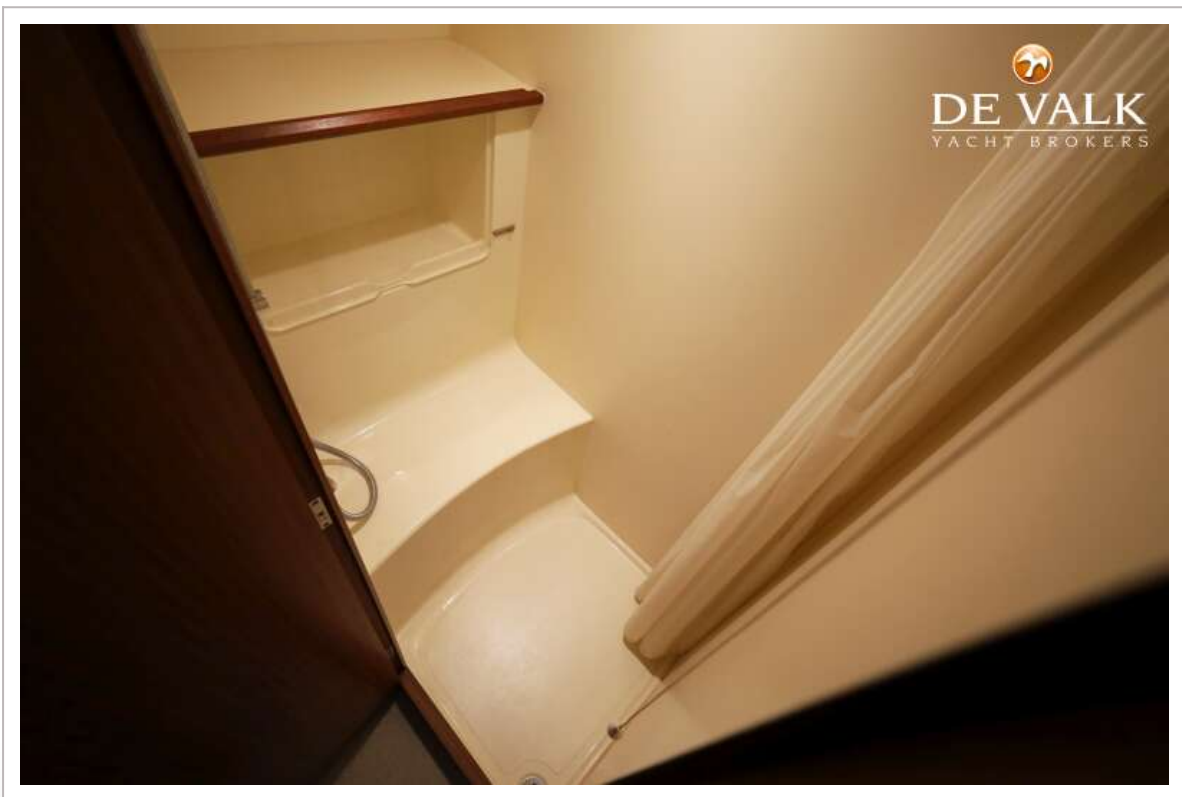


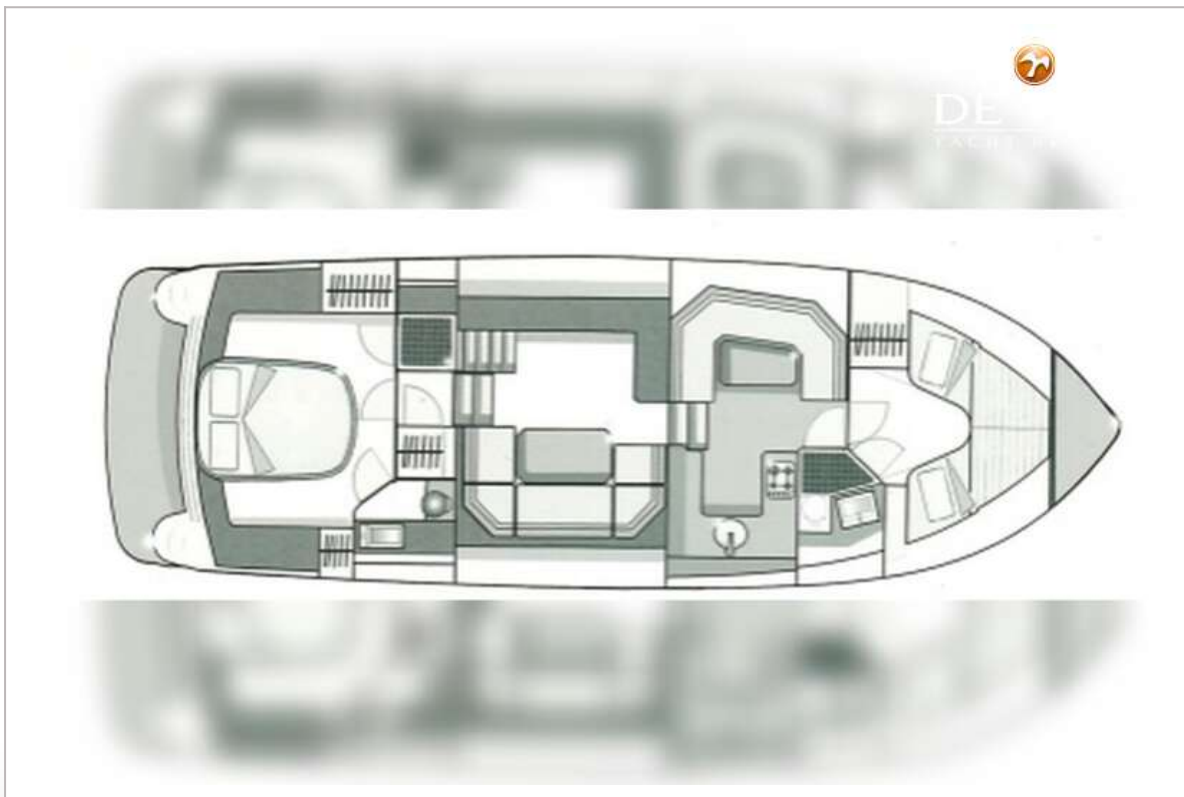
BROOM 425



BROOM 425







BROOM 425

