



DE VALK  
YACHT BROKERS

**THIS YACHT WILL BE AUCTIONED**

MOLENMAKER & MANTEL 1160



DE VALK  
YACHT BROKERS

BROKERAGE | CHARTER | BERTHS | FINANCE | INSURANCE | YACHT MANAGEMENT

# MOLENMAKER & MANTEL 1160

## BROKER'S COMMENTS

This Molenmaker & Mantel cutter 11.60 has just arrived for sale. This joggled round bilge cutter is a beauty to behold. Equipped with a powerful DAF615 engine and electric bow thruster, this vessel offers great manouvreability. It features four fixed berths across two cabins. The Molenmaker & Mantel will be auctioned online at Bright Auctions. Bids can only be placed online at Bright Auctions. All information about the auction is available on the website <http://bit.ly/4IYiLI0>

*Julian de Heer*

## SPECIFICATIONS

|                     |                         |                |                          |
|---------------------|-------------------------|----------------|--------------------------|
| <b>Dimensions</b>   | 11.60 x 3.65 x 1.25 (m) | <b>Builder</b> | Molenmaker en Mantel     |
| <b>Built</b>        | 1991                    | <b>Cabins</b>  | 2                        |
| <b>Material</b>     | Steel                   | <b>Berths</b>  | 4                        |
| <b>Engine(s)</b>    | 1 x Daf DF615 diesel    | <b>Hp/Kw</b>   | 140.00 (hp), 103.04 (kw) |
| <b>Asking price</b> | € 25.000 (VAT Paid)     | <b>Lying</b>   | at sales office          |

## CONTACT

|                     |  |                  |                      |
|---------------------|--|------------------|----------------------|
| <b>Sales office</b> | De Valk Loosdrecht B.V.  | <b>Telephone</b> | +31 (0)35 582 90 30  |
| <b>Address</b>      | 't Breukeleveense Meentje 6<br>1231LM Loosdrecht / Wijdmeren<br>NL | <b>E-mail</b>    | loosdrecht@devalk.nl |

## DISCLAIMER

These particulars are given in good faith as supplied but cannot be guaranteed.



## GENERAL

|                              |   |
|------------------------------|---|
| Model                        | MOLENMAKER & MANTEL 1160                                    |
| Type                         | motor yacht   |
| LOA (m)                      | 11,60   |
| Beam (m)                     | 3,65  |
| Draft (m)                    | 1,25  |
| Year built                   | 1991  |
| Launched                     | 1993  |
| Builder                      | Molenmaker en Mantel  |
| Country                      | The Netherlands   |
| Designer                     | Piet Mantel   |
| Hull material                | steel   |
| Hull colour                  | green   |
| Hull shape                   | round-bilged Joggeld  |
| Superstructure material      | steel   |
| Deck material                | steel   |
| Deck finish                  | non-skid paint  |
| Cockpit deck finish          | non-skid paint  |
| Antifouling (year)           | 10-2024   |
| Window frame                 | aluminium   |
| Window material              | glass   |
| Deckhatch                    | 2x  |
| Portholes                    | aluminium 14 in total, 12 can be opened with window screens |
| Mast can be lowered          | manual  |
| Steadying sail with mast     | yes   |
| Fuel tank (litre)            | steel 500   |
| Level indicator (fuel tank)  | VDO   |
| Freshwater tank (litre)      | stainless steel 2X 250L                                     |
| Level indicator (freshwater) | yes   |
| Blackwater tank (litre)      | polyethylene 100L   |
| Level indicator (blackwater) | yes   |



|                                   |                        |
|-----------------------------------|------------------------|
| <b>Blackwater tank extraction</b> | deck extraction + pump |
| <b>Wheel steering</b>             | hydraulic              |
| <b>Inside helm position</b>       | yes                    |
| <b>Outside helm position</b>      | hydraulic              |

## ACCOMMODATION

|                                 |  |
|---------------------------------|--|
| <b>Cabins</b>                   | 2  |
| <b>Berths</b>                   | 4  |
| <b>Interior</b>                 | teak   |
| <b>Floor</b>                    | carpet Teak floor under carpet                             |
| <b>Aft deck</b>                 | yes  |
| <b>Saloon</b>                   | yes  |
| <b>Sliding roof</b>             | manual   |
| <b>Heating</b>                  | electric 220V All piping present but not connected         |
| <b>Aft Cabin</b>                | yes  |
| <b>Dinette</b>                  | yes  |
| <b>Opening door to aft deck</b> | yes  |
| <b>Galley</b>                   | yes  |
| <b>Countertop</b>               | plastic  |
| <b>Sink</b>                     | stainless steel  |
| <b>Cooker</b>                   | calor gas ELBA   |
| <b>Fridge</b>                   | Electrolux 92L   |
| <b>Freezer</b>                  | In fridge  |
| <b>Hot water system</b>         | 220V + engine Boiler, all piping present but not connected |
| <b>Water pressure system</b>    | electrical   |
| <b>Owners cabin</b>             | double bed   |
| <b>Wardrobe</b>                 | hanging and shelves  |
| <b>Bathroom</b>                 | separate   |
| <b>Toilet</b>                   | en suite   |
| <b>Toilet system</b>            | electric   |
| <b>Wash basin</b>               | in the bathroom  |



|               |          |
|---------------|----------|
| Shower        | en suite |
| Guest cabin 1 | v-bed    |
| Wardrobe      | shelves  |

## MACHINERY

|                          |                                       |
|--------------------------|---------------------------------------|
| No of engines            | 1                                     |
| Make                     | Daf                                   |
| Type                     | DF615                                 |
| HP                       | 140                                   |
| kW                       | 103.04                                |
| Fuel                     | diesel                                |
| Engine hours             | 3492                                  |
| Engine cooling system    | freshwater heat exchanger             |
| Drive                    | shaft                                 |
| Engine controls          | bowden cable                          |
| Gearbox                  | hydraulic Velvet                      |
| Bowthruster              | electric                              |
| Propeller type           | fixed                                 |
| Propeller shaft material | stainless steel                       |
| Shaft lubrication        | grease                                |
| Electrical installation  | yes                                   |
| Batteries                | 2X 225Ah                              |
| Inverter                 | Victron multiplus 24/3000/70          |
| Solar panel              | 2x                                    |
| Extra info               | Old hour counter: 1364 New hour: 2128 |

## NAVIGATION

|                   |     |
|-------------------|-----|
| Navigation lights | yes |
|-------------------|-----|

## EQUIPMENT



|                            |                   |
|----------------------------|-------------------|
| Anchor                     | yes               |
| Windlass                   | manual            |
| Davits                     | stainless steel   |
| Sea railing                | stainless steel   |
| Railing side opening gates | yes               |
| Wiper                      | 3x                |
| Horn                       | yes               |
| Fenders                    | yes               |
| Mooring lines              | New mooring lines |
| TV                         | OK                |
| Clock - barometer          | yes               |

## RIGGING

|            |                         |
|------------|-------------------------|
| Extra info | No support sail present |
|------------|-------------------------|





**This yacht will be auctioned,  
for further details please visit [www.devalk.nl](http://www.devalk.nl)**

**Dit schip zal worden geveild,  
voor meer informatie gaat u naar [www.devalk.nl](http://www.devalk.nl)**

**Dieses Schiff wird versteigert,  
für weitere informationen besuchen Sie [www.devalk.nl](http://www.devalk.nl)**

[WWW.DEVALK.NL](http://WWW.DEVALK.NL)

  
**DE VALK**  
YACHT BROKERS









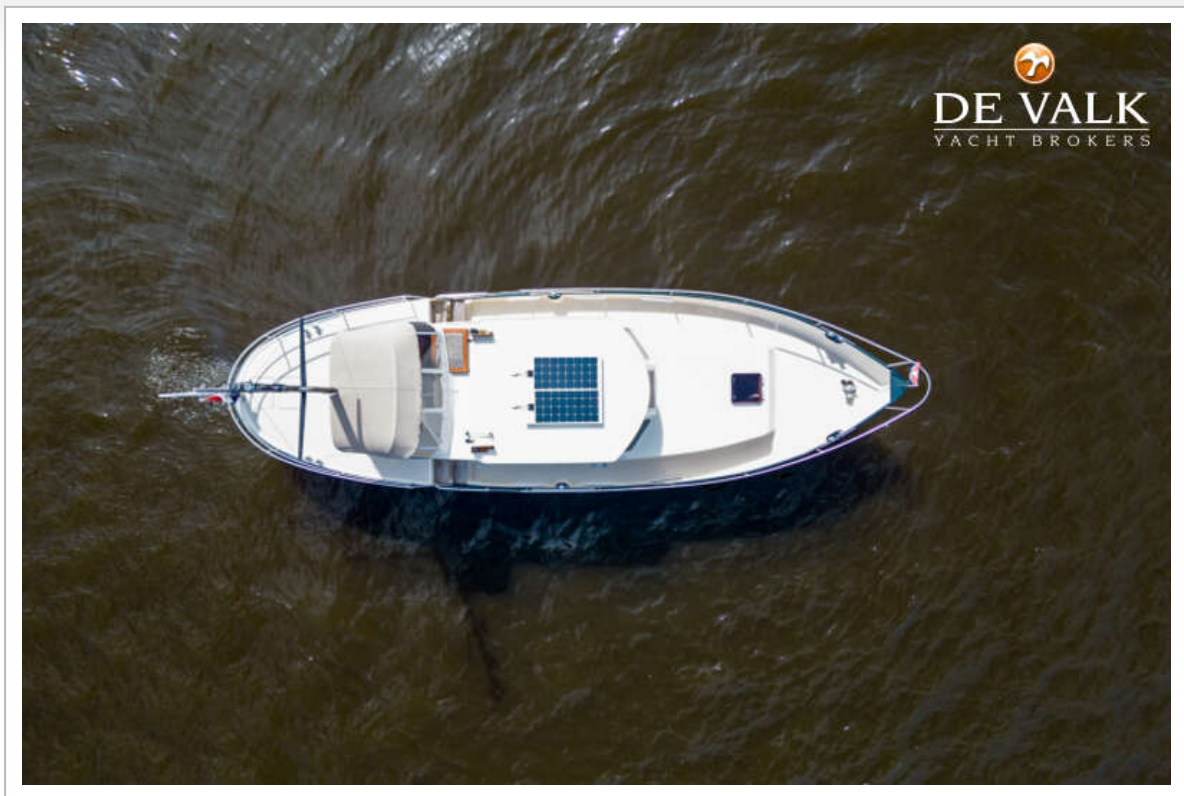
# MOLENMAKER & MANTEL 1160







# MOLENMAKER & MANTEL 1160



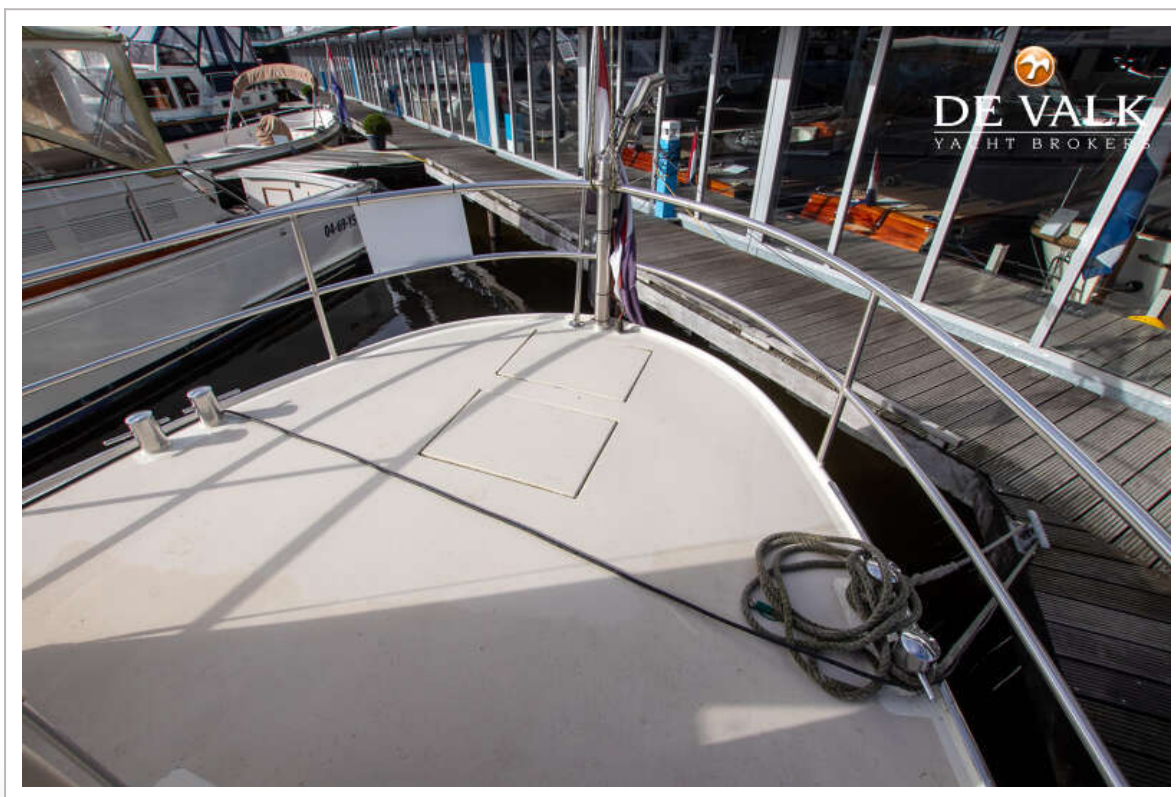
# MOLENMAKER & MANTEL 1160





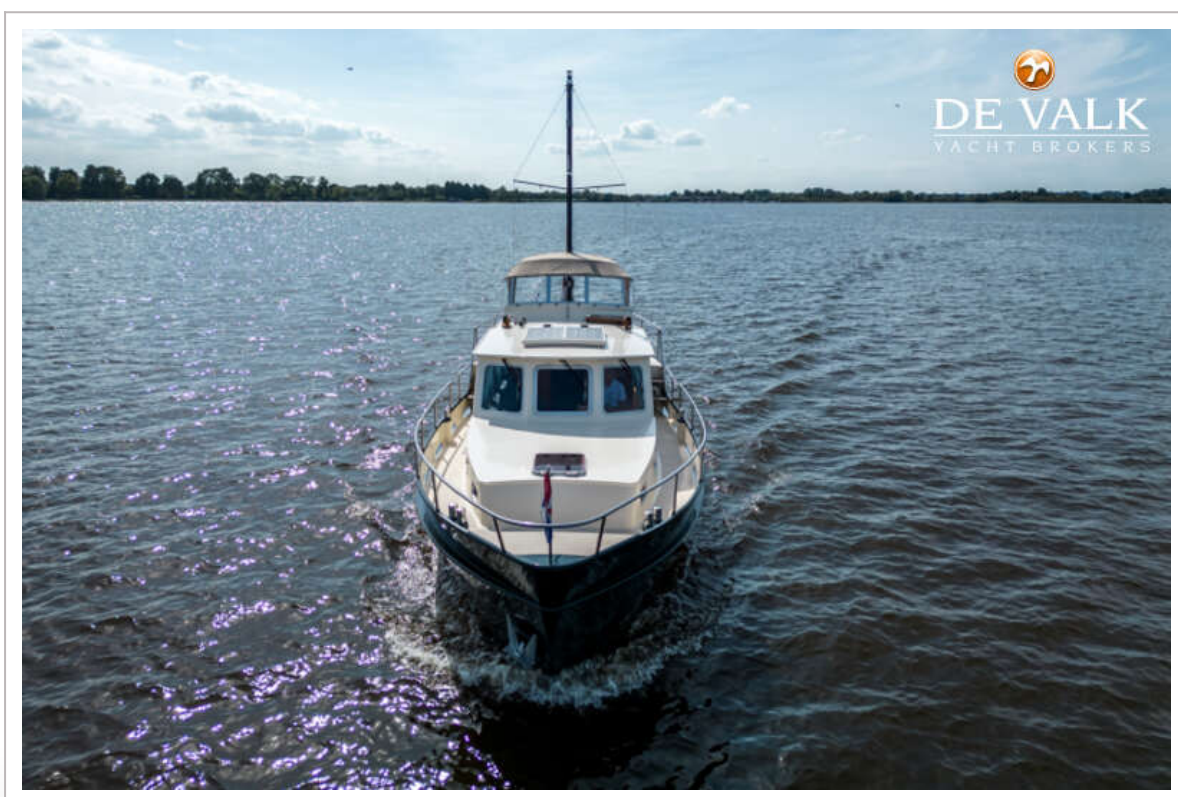
# MOLENMAKER & MANTEL 1160







# MOLENMAKER & MANTEL 1160

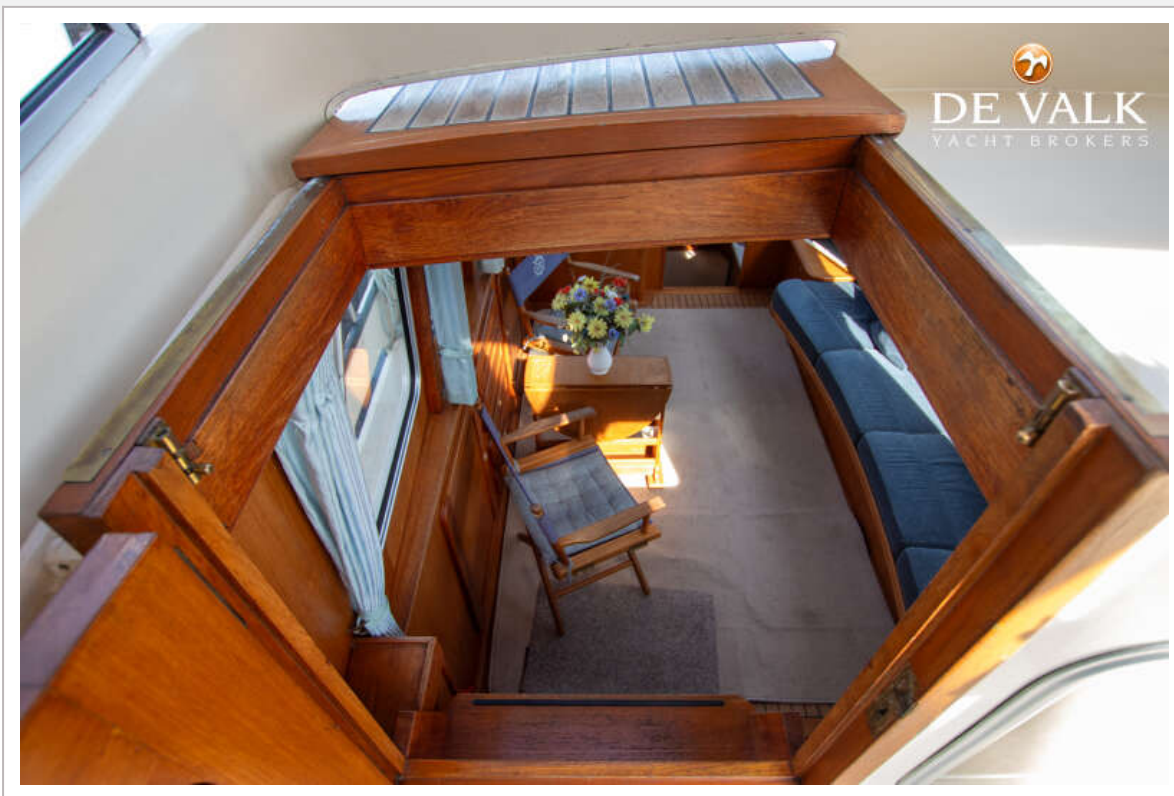


# MOLENMAKER & MANTEL 1160





# MOLENMAKER & MANTEL 1160



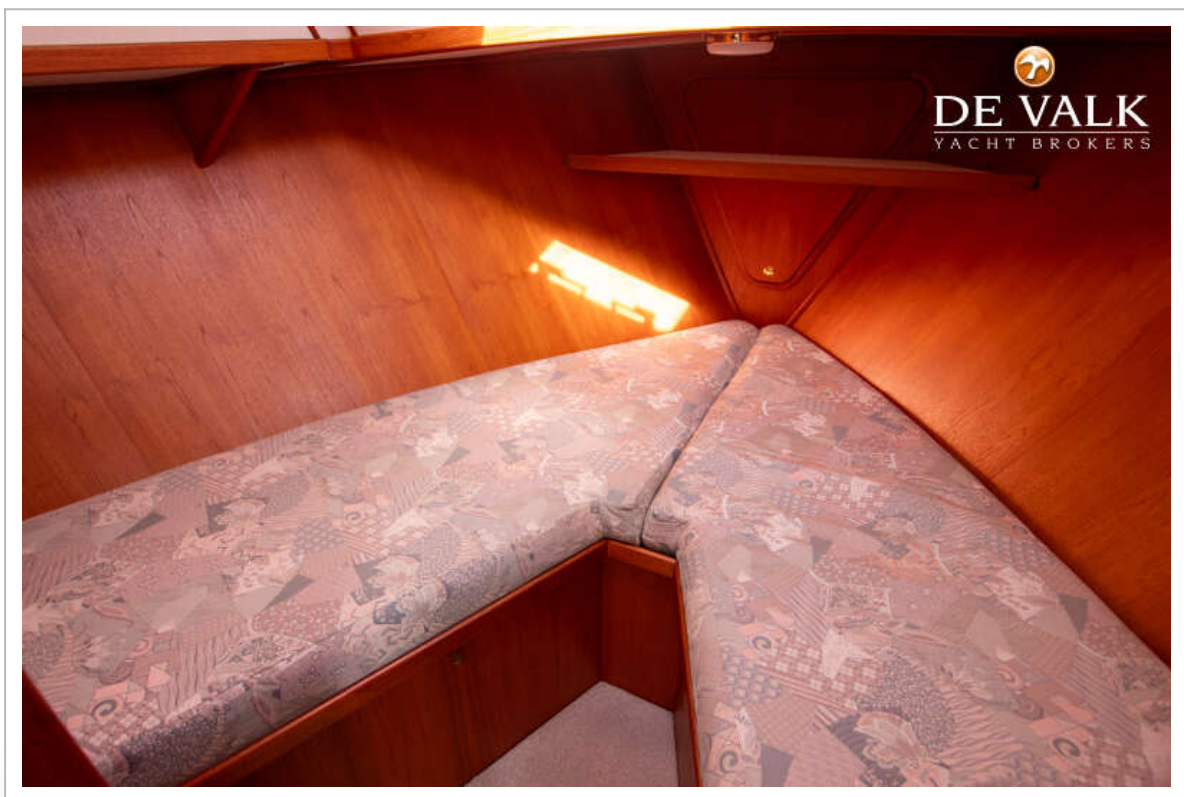
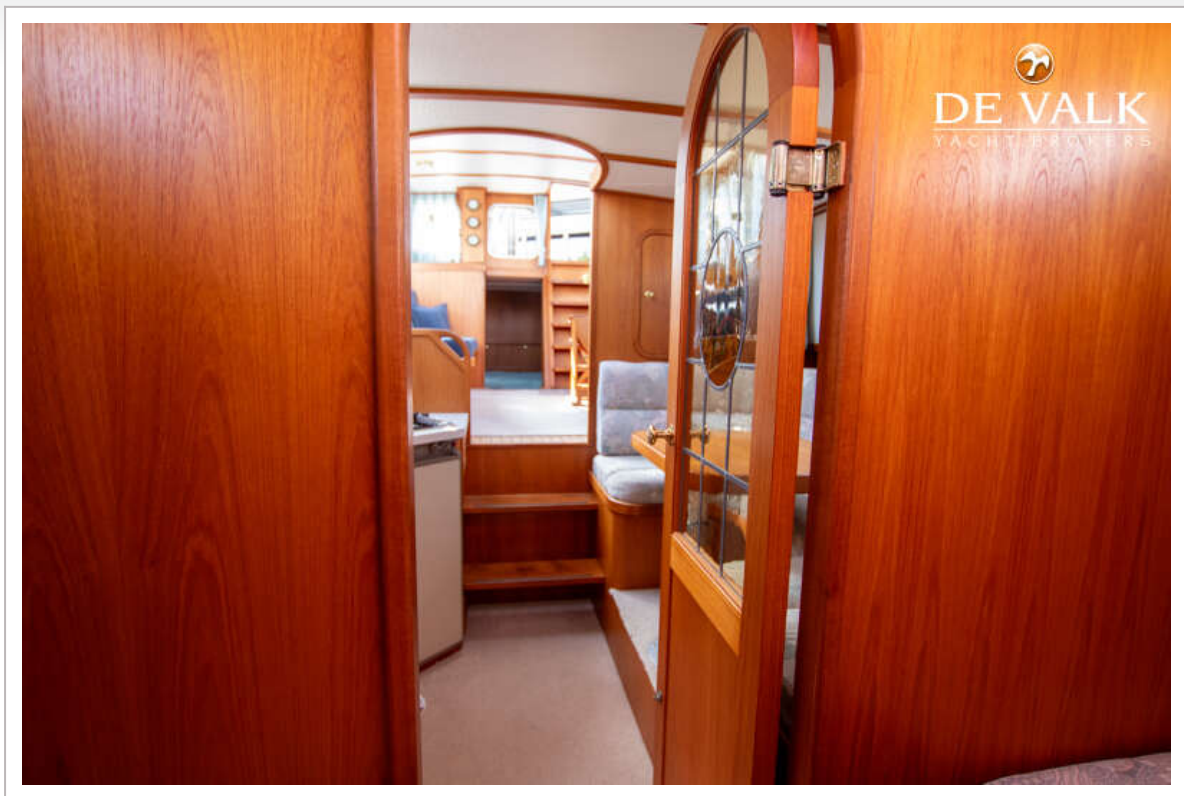
# MOLENMAKER & MANTEL 1160





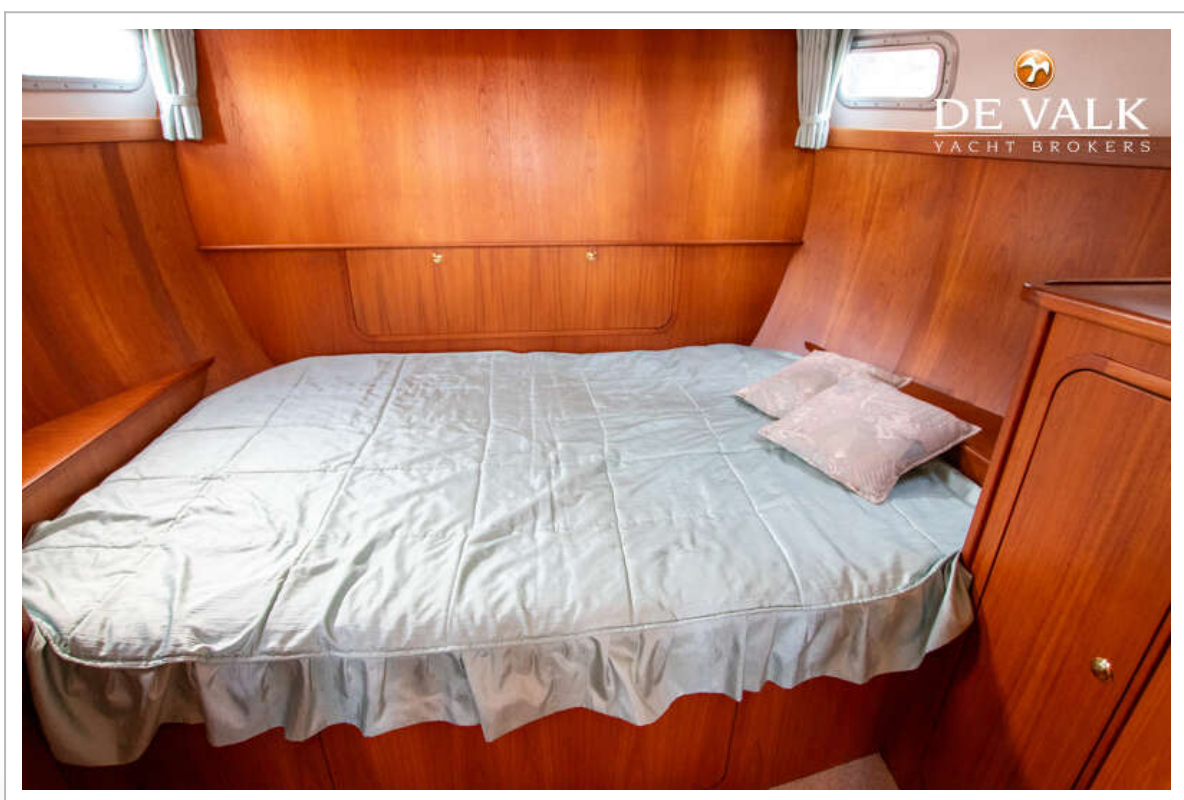
# MOLENMAKER & MANTEL 1160

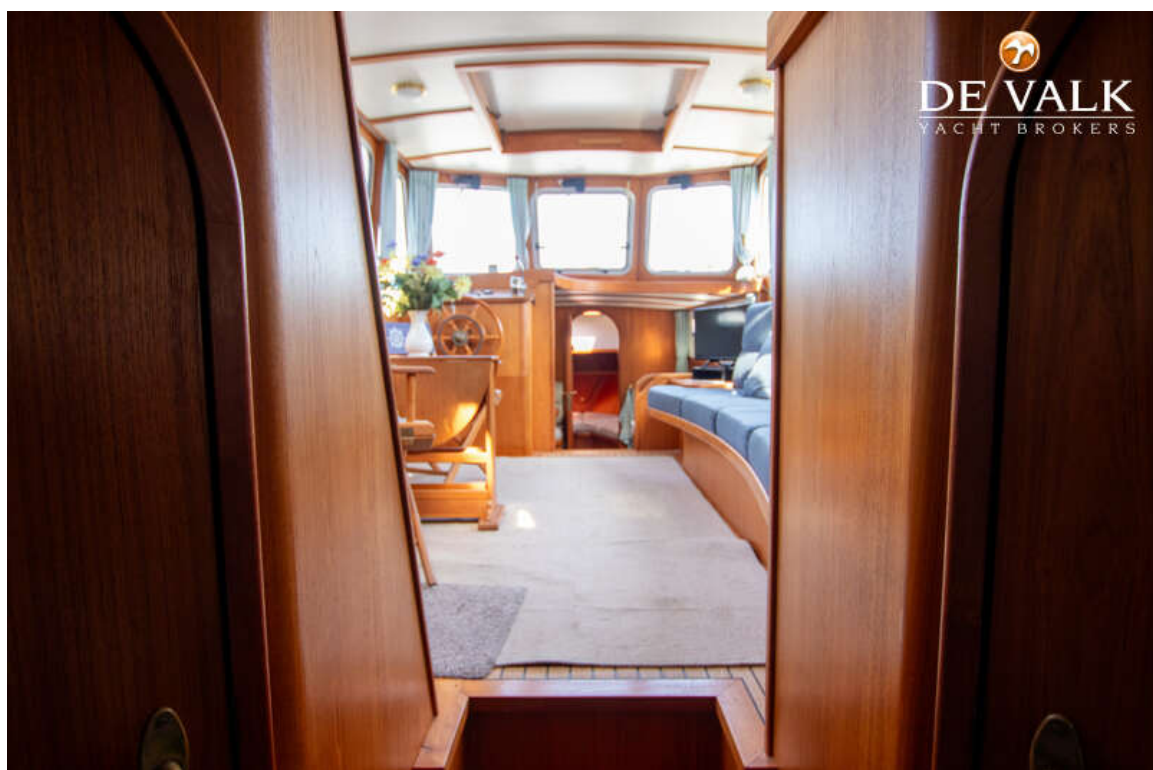
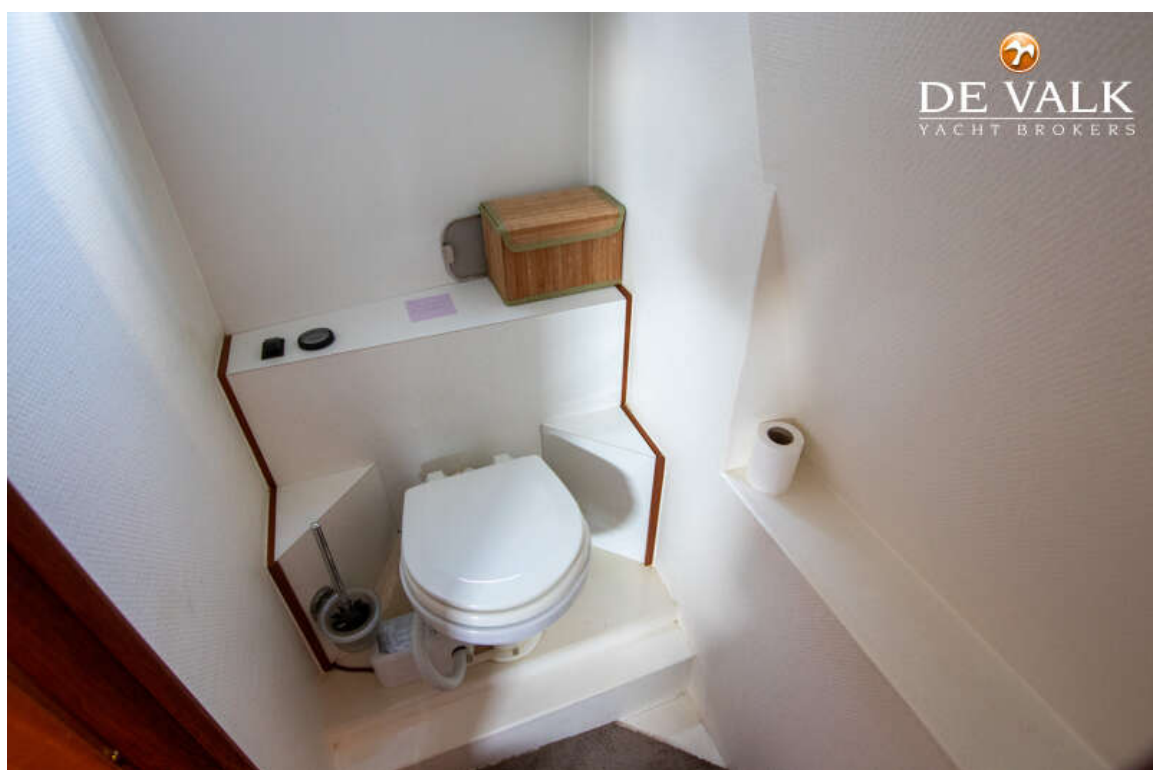




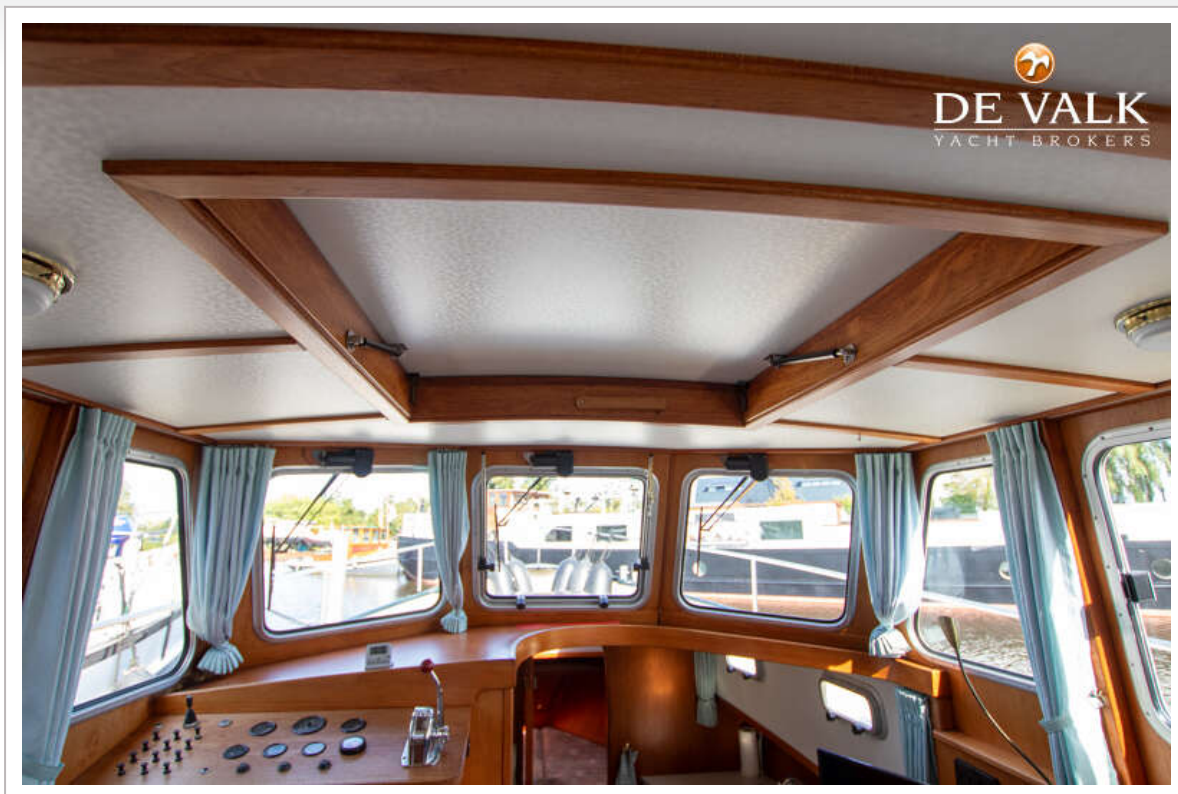


# MOLENMAKER & MANTEL 1160









# MOLENMAKER & MANTEL 1160





# MOLENMAKER & MANTEL 1160

