



DE VALK  
YACHT BROKERS



## NAVY TENDER 1680



DE VALK  
YACHT BROKERS

# NAVY TENDER 1680

## BROKER'S COMMENTS

Navy Tender 1680 "Wending" built in 1939 for the German Navy, in 2012 the total refit was completed, down to the bare ribs and rebuilt including new skin, systems, engines, superstructure, and since then the "Wending" has been sailing again . . until the current owner had the Navy Tender professionally tackled again in 2022, most important aspects during this major refit have been : guest cabin in front with V-bed , dinette for 4 people, new kitchen including appliances, and in terms of technology huge improvements have been made. "Wending" is ready to sail. Welcome in Sneek !

*Henk de Vries*

## SPECIFICATIONS

<b>Dimensions</b>	16.80 x 4.25 x 1.30 (m)	<b>Builder</b>	Gebroeders de Jong Alphen a/d Rijn
<b>Built</b>	2012	<b>Cabins</b>	2
<b>Material</b>	Steel	<b>Berths</b>	4
<b>Engine(s)</b>	2 x Mercedes-Benz V6 OM 421 diesel	<b>Hp/Kw</b>	2 x 220.00 (hp), 161.92 (kw)
<b>Asking price</b>	€ 219.000 (VAT Paid)	<b>Lying</b>	at sales office

## CONTACT

<b>Sales office</b>	De Valk Sneek	<b>Telephone</b>	+31 (0)515 42 80 30
<b>Address</b>	Zwolsmanweg 7 8606 KC Sneek NL	<b>E-mail</b>	sneek@devalk.nl

## DISCLAIMER

These particulars are given in good faith as supplied but cannot be guaranteed.



# NAVY TENDER 1680

## GENERAL

Model	NAVY TENDER 1680
Type	motor yacht
LOA (m)	16,80
Beam (m)	4,25
Draft (m)	1,30
Air draft (m)	2,70
Headroom (m)	2,00
Year built	2012
Launched	1939
Builder	Gebroeders de Jong Alphen a/d Rijn
Country	The Netherlands
Displacement (t)	30
Ballast (tonnes)	lead
CE norm	NA
Hull material	steel
Hull colour	black
Hull thickness (mm)	5
Hull shape	round-bilged
Keel type	long keel
Bilge keels	yes
Superstructure material	teak And steel
Deck plate thickness (mm)	6/8
Rubbing strake	steel
Deck material	steel
Deck finish	non-skid paint
Superstructure deck finish	paint
Antifouling (year)	2022
Dorades	yes
Window frame	aluminium
Window material	double glazing



# NAVY TENDER 1680

Deckhatch	yes
Portholes	brass
Insulation	rockwool
Mast can be lowered	hydraulic Stainless Steel
Fuel tank (litre)	steel 2 x 260 (new 2022)
Fuel tank 2 (litre)	350 for generator ( new 2022)
Level indicator (fuel tank)	yes
Freshwater tank (litre)	stainless steel 1100
Level indicator (freshwater)	yes
Blackwater tank (litre)	stainless steel 400
Level indicator (blackwater)	yes
Blackwater tank extraction	deck extraction + pump
Wheel steering	hydraulic
Inside helm position	yes

## ACCOMMODATION

Cabins	2
Berths	4
Interior	teak
Floor	carpet
Pilot house/deck saloon	yes
Headroom saloon (m)	2,14
Sliding roof	manual
Heating	central heating Kabola HR 400 Combi 230V
Aft Cabin	yes
Dinette	(new 2022)
Sliding door to cockpit	2 x
Galley	yes
Countertop	(new 2022) LG
Sink	stainless steel (new 2022)
Cooker	electric 4-pits Siemens ( new 2022)



# NAVY TENDER 1680

Microwave/oven combi	yes
Fridge	Dometic CRX 140 compr. 12V (new 2022)
Freezer	In fridge
Hot water system	on central heating
Water pressure system	electrical
Owners cabin	double bed
Bed length (m)	1,60 x 2,20
Wardrobe	hanging and drawers
Bathroom	shared
Toilet	separate
Toilet system	electric
Wash basin	in the bathroom
Shower	shared
Guest cabin 1	v-bed (new 2022)
Bed length (m)	80 x 2,20
Wardrobe	yes
Washing machine/dryer combi	Euronova 1180 Rapid (new 2022)

## MACHINERY

No of engines	2
Make	Mercedes-Benz V6
Type	OM 421
HP	220
kW	161.92
Fuel	diesel
Year installed	2011
Maximum speed (kn)	10,5
Cruising speed (kn)	9
Consumption (l/hr)	6
Engine hours	1775
Engine cooling system	hopper cooling Hopper cooling Blokland



# NAVY TENDER 1680

Drive	shaft
Shaft seal	yes
Engine controls	bowden cable
Gearbox	hydraulic Twin Disc
Bowthruster	Vetus 180 kgf 24V (new 2022)
Exhaust	watercooled
Thrust bearing	yes
Propeller type	fixed
Propeller blades	5
Propeller shaft material	stainless steel
Shaft lubrication	grease
Electric bilge pump	yes
Electrical installation	12V / 24V / 230V
Generator	silent separator Whisper Power MS Q10 (service 2022)
Running hours generator	1150
Batteries	8 x (new 2022)
Start battery	2x AGM
Service battery	4x Deep Cycle AGM 200Ah
Generator battery	1x AGM
Bowthruster battery	AGM 170Ah
Battery charger	Victron Blue Power 12/17 + Victron Orion 24/12-25
Inverter	yes
Battery charger/inverter	Victron MultiPlus 24/3000/70
Solar panel	Victron Energy 305W-20V Mono (4b)
Shorepower	yes
Insulation transformer	yes
Extra info	Isolation engine room: Merfocell 40mm (2022)

## NAVIGATION

Electric compass	Raymarine
Depth sounder/log	Raymarine



# NAVY TENDER 1680

VHF	Sailor RT2048
Autopilot	Raymarine
Rudder angle indicator	Raymarine
GPS	Raymarine
Plotter	Raymarine E Hybrid
Extra info	Navigation equipment 2015

## EQUIPMENT

Bimini	yes
Cockpit cushions	yes
Boarding ladder	steel
Anchor	yes
Anchor chain	yes
Windlass	manual
Deck wash	yes
Sea railing	steel
Railing side opening gates	yes
Wiper	2 x
Clearview window	Einar Weilbach & Co.
Horn	air pressure
Fenders	yes
Mooring lines	yes
Radio-cd player	Bang & Olufsen "BeoSound 1"
Clock - barometer	yes
Fire extinguisher	3 x



# NAVY TENDER 1680





# NAVY TENDER 1680



# NAVY TENDER 1680





# NAVY TENDER 1680



# NAVY TENDER 1680





# NAVY TENDER 1680



# NAVY TENDER 1680

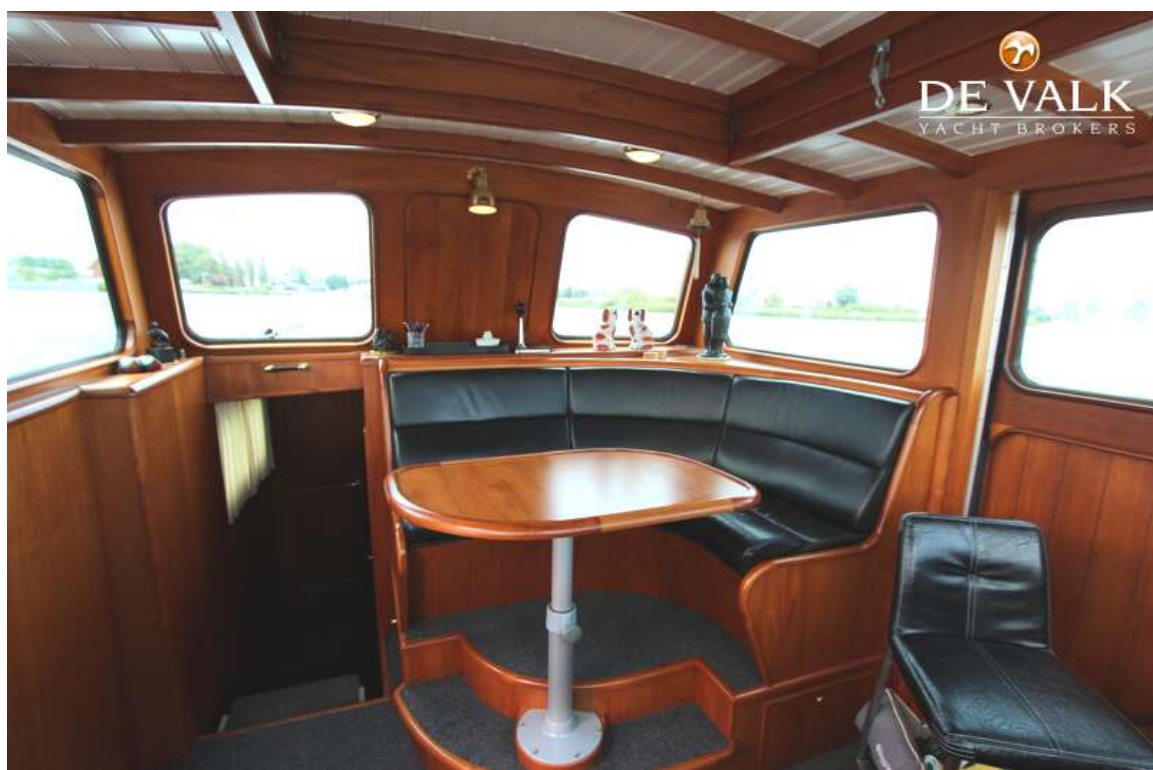




# NAVY TENDER 1680

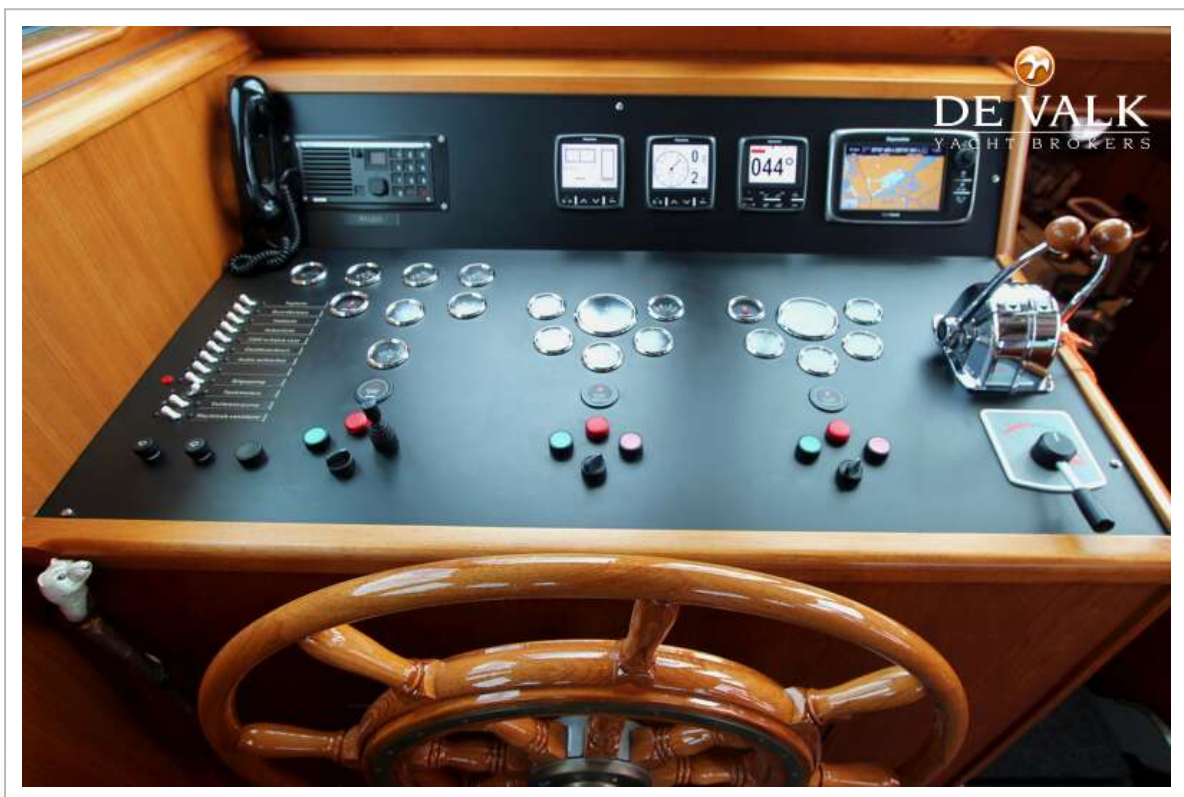
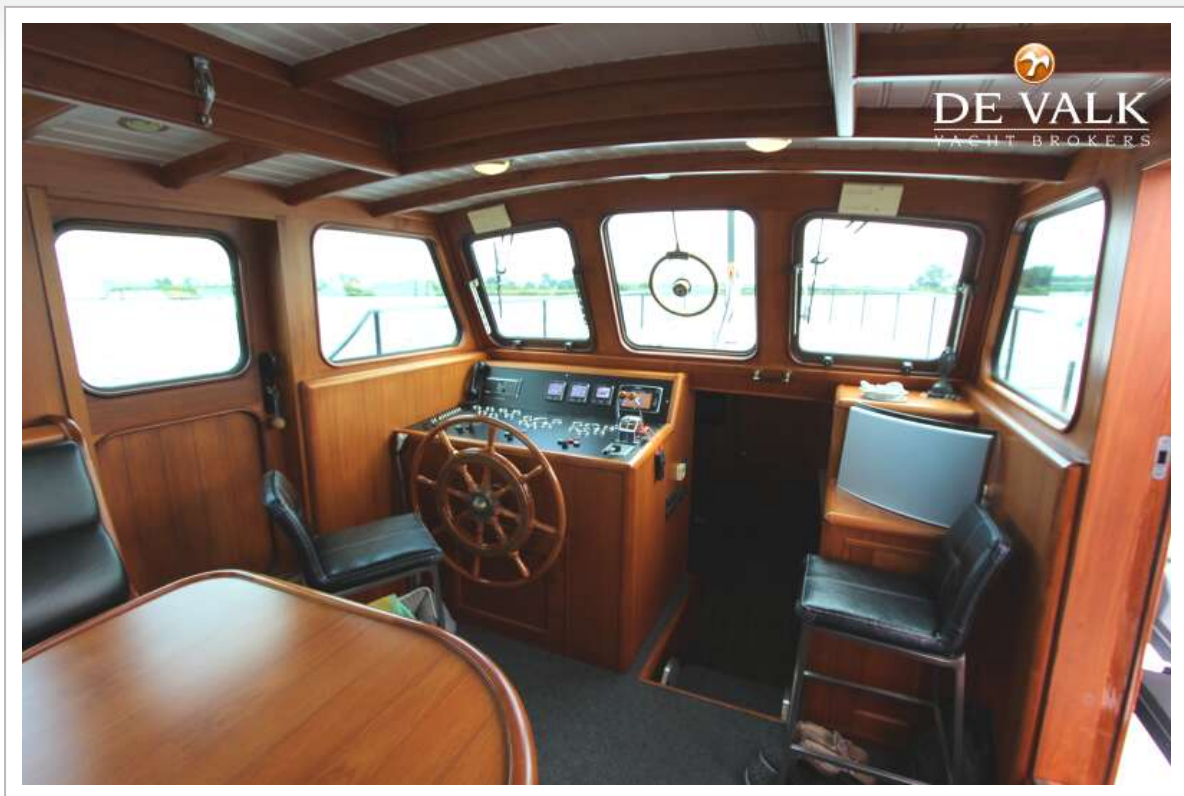


# NAVY TENDER 1680





# NAVY TENDER 1680



# NAVY TENDER 1680





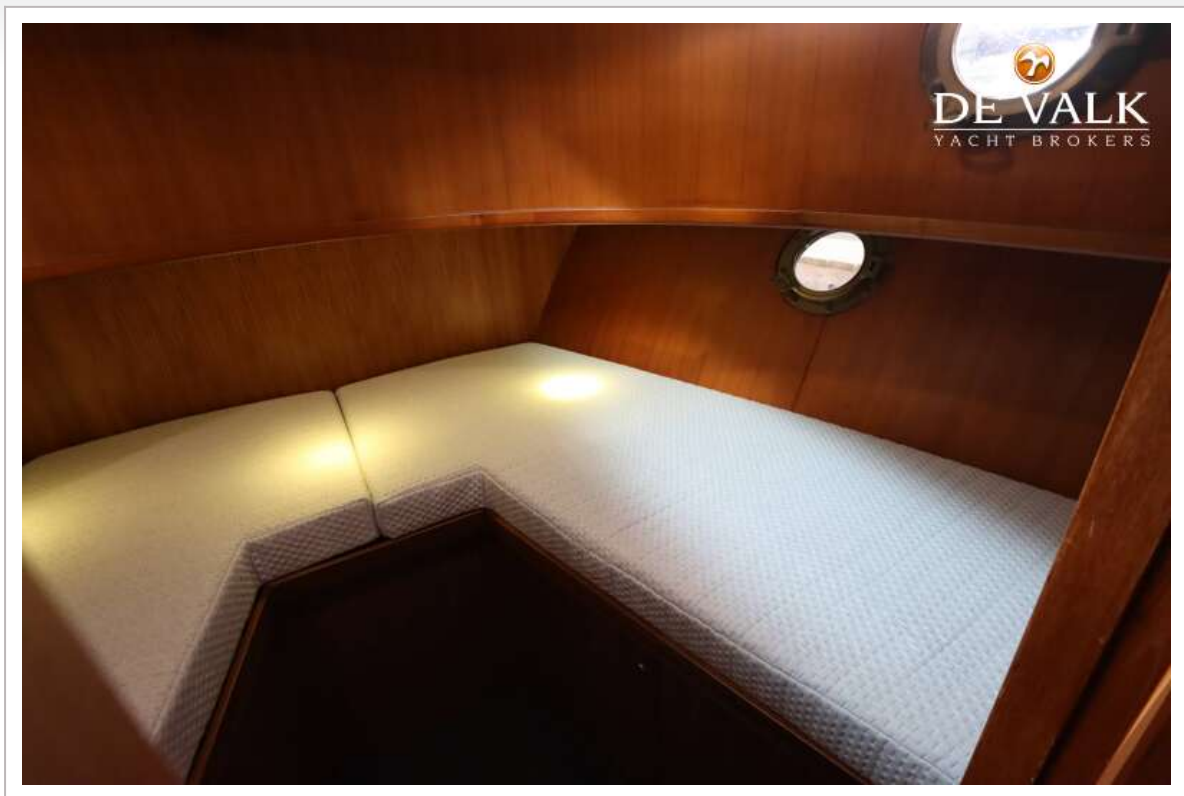
# NAVY TENDER 1680



# NAVY TENDER 1680

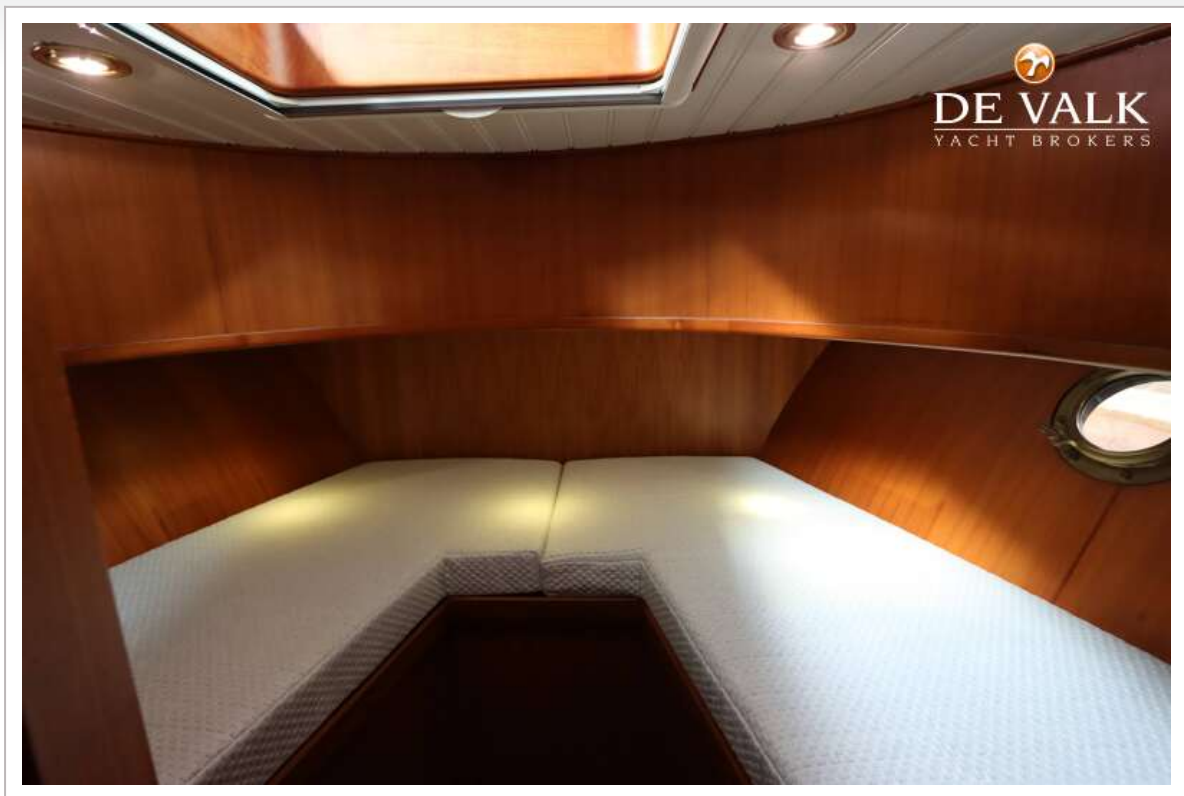


# NAVY TENDER 1680





# NAVY TENDER 1680



# NAVY TENDER 1680



