



DE VALK  
YACHT BROKERS



## ZIJLMANS EAGLE 1500 CABRIO



DE VALK  
YACHT BROKERS

# ZIJLMANS EAGLE 1500 CABRIO

## BROKER'S COMMENTS

Zijlmans Eagle 1500 Cabrio "Franir" was built at Scheepswerf Zijlmans by the first and current owner in 2012. This steel motor yacht is very fully equipped including 170 hp Vetus Deutz diesel engine, bow and stern thruster, Vetus 16 KVa generator and double glazing, central heating, etc.. This Zijlmans Eagle 1500 Cabrio has a sharp layout with three cabins (sleeps 5) and two spacious ensuite bathrooms. The "Franir" is a chic, timeless and recent motor yacht.

*Jochem Heijermans*

## SPECIFICATIONS

<b>Dimensions</b>	14.95 x 4.50 x 1.20 (m)	<b>Builder</b>	Zijlmans Jachtbouw B.V.
<b>Built</b>	2012	<b>Cabins</b>	3
<b>Material</b>	Steel	<b>Berths</b>	5
<b>Engine(s)</b>	1 x Vetus Deutz DT66422E diesel	<b>Hp/Kw</b>	170.00 (hp), 125.12 (kw)
<b>Asking price</b>	€ 369.000 (VAT Paid)	<b>Lying</b>	elsewhere / Not at sales office

## CONTACT

<b>Sales office</b>	De Valk Belgium	<b>Telephone</b>	+3258680218
<b>Address</b>	1401 PT Nieuwpoort Belgium	<b>E-mail</b>	belgium@devalk.nl

## DISCLAIMER

These particulars are given in good faith as supplied but cannot be guaranteed.



# ZIJLMANS EAGLE 1500 CABRIO

## GENERAL

<b>Model</b>	ZIJLMANS EAGLE 1500 CABRIO
<b>Type</b>	motor yacht
<b>LOA (m)</b>	14,95
<b>Beam (m)</b>	4,50
<b>Draft (m)</b>	1,20
<b>Air draft min (m)</b>	3,05
<b>Headroom (m)</b>	2,00
<b>Year built</b>	2012
<b>Builder</b>	Zijlmans Jachtbouw B.V.
<b>Country</b>	The Netherlands
<b>Designer</b>	F. Kuyten
<b>Displacement (t)</b>	22
<b>CE norm</b>	B
<b>Hull material</b>	steel
<b>Hull colour</b>	white
<b>Hull shape</b>	hard chine
<b>Superstructure material</b>	steel
<b>Rubbing strake</b>	stainless steel
<b>Deck material</b>	steel
<b>Deck finish</b>	teak
<b>Superstructure deck finish</b>	paint
<b>Cockpit deck finish</b>	teak
<b>Antifouling (year)</b>	2022
<b>Window frame</b>	aluminium
<b>Window material</b>	double glazing
<b>Deckhatch</b>	yes
<b>Portholes</b>	aluminium
<b>Mast can be lowered</b>	manual
<b>Fuel tank (litre)</b>	1475
<b>Level indicator (fuel tank)</b>	yes



# ZIJLMANS EAGLE 1500 CABRIO

Freshwater tank (litre)	1000
Level indicator (freshwater)	yes
Blackwater tank (litre)	750
Level indicator (blackwater)	yes
Wheel steering	hydraulic
Outside helm position	yes

## ACCOMMODATION

Cabins	3
Berths	5
Interior	teak
Floor	carpet + teak and holly
Aft deck	yes
Saloon	yes
Headroom saloon (m)	2
Heating	central heating Kabola HR 400
Aft Cabin	yes
Dinette	yes
Opening door to aft deck	yes
Galley	yes
Countertop	marble
Sink	stainless steel
Cooker	electric
Microwave/oven combi	Zanussi
Fridge	2x
Hot water system	on central heating
Water pressure system	electrical
Dishwasher	Zanussi
Owners cabin	French bed
Bed length (m)	2,00 x 1,50
Wardrobe	hanging/drawers/shelves



# ZIJLMANS EAGLE 1500 CABRIO

<b>Bathroom</b>	en suite
<b>Toilet</b>	en suite
<b>Toilet system</b>	electric
<b>Wash basin</b>	in the bathroom
<b>Shower</b>	en suite
<b>Guest cabin 1</b>	French bed
<b>Bed length (m)</b>	2,00 x 1,40
<b>Wardrobe</b>	hanging and drawers
<b>Bathroom</b>	en suite
<b>Toilet</b>	en suite
<b>Toilet system</b>	electric
<b>Wash basin</b>	in the bathroom
<b>Shower</b>	en suite
<b>Guest cabin 2</b>	single bed
<b>Bed length (m)</b>	2,00
<b>Dryer</b>	Zanussi
<b>Washing machine/dryer combi</b>	Zanussi
<b>Central vacuum cleaner</b>	yes
<b>Wet bar</b>	yes

## MACHINERY

<b>No of engines</b>	1
<b>Make</b>	Vetus Deutz
<b>Type</b>	DT66422E
<b>HP</b>	170
<b>kW</b>	125.12
<b>Fuel</b>	diesel
<b>Year installed</b>	2012
<b>Engine hours</b>	110
<b>Engine cooling system</b>	freshwater heat exchanger
<b>Drive</b>	shaft



# ZIJLMANS EAGLE 1500 CABRIO

Engine controls	bowden cable
Gearbox	hydraulic
Bowthruster	electric
Sternthruster	electric
Exhaust	watercooled
Thrust bearing	yes
Propeller type	fixed
Shaft lubrication	water
Electric bilge pump	yes
Electrical installation	24V/220V
Generator	silent separator Vetus 16KVa
Running hours generator	60
Batteries	yes
Start battery	yes
Service battery	yes
Battery monitor	yes
Battery charger/inverter	Victron 24V/3000W/70Ah
Shorepower	with cable
Insulation transformer	Victron

## NAVIGATION

Depth sounder/log	Raymarine
VHF	Raymarine
Rudder angle indicator	Raymarine
Plotter/GPS	PC Navigo
AIS transceiver	yes
Navigation lights	yes

## EQUIPMENT

Cockpit cover	yes
Bimini	yes



# ZIJLMANS EAGLE 1500 CABRIO

Cockpit cushions	yes
Bathing platform	yes
Boarding ladder	stainless steel
Transom door	yes
Anchor	yes
Windlass	electrical Remote control
Capstan	yes
Deck wash	yes
Sea railing	stainless steel
Grab rail (superstructure)	stainless steel
Railing side opening gates	2x
Pushpit	yes
Pulpit	yes
Wiper	yes
Horn	yes
Fenders	yes
Mooring lines	yes
TV	yes
TracVision ball	yes
Radio-cd player	yes
Cockpit speakers	yes
Speakers in salon	yes
Fire extinguisher	yes
Auto extinguisher system	yes





# ZIJLMANS EAGLE 1500 CABRIO

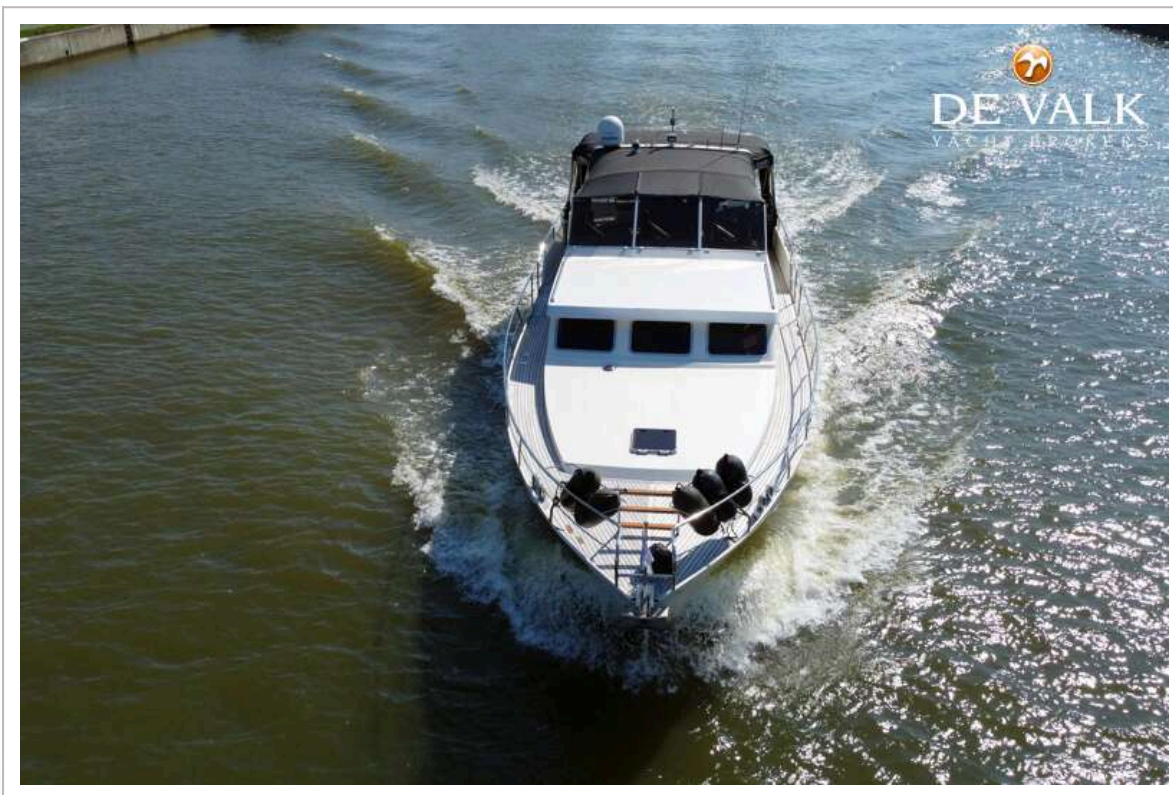




# ZIJLMANS EAGLE 1500 CABRIO

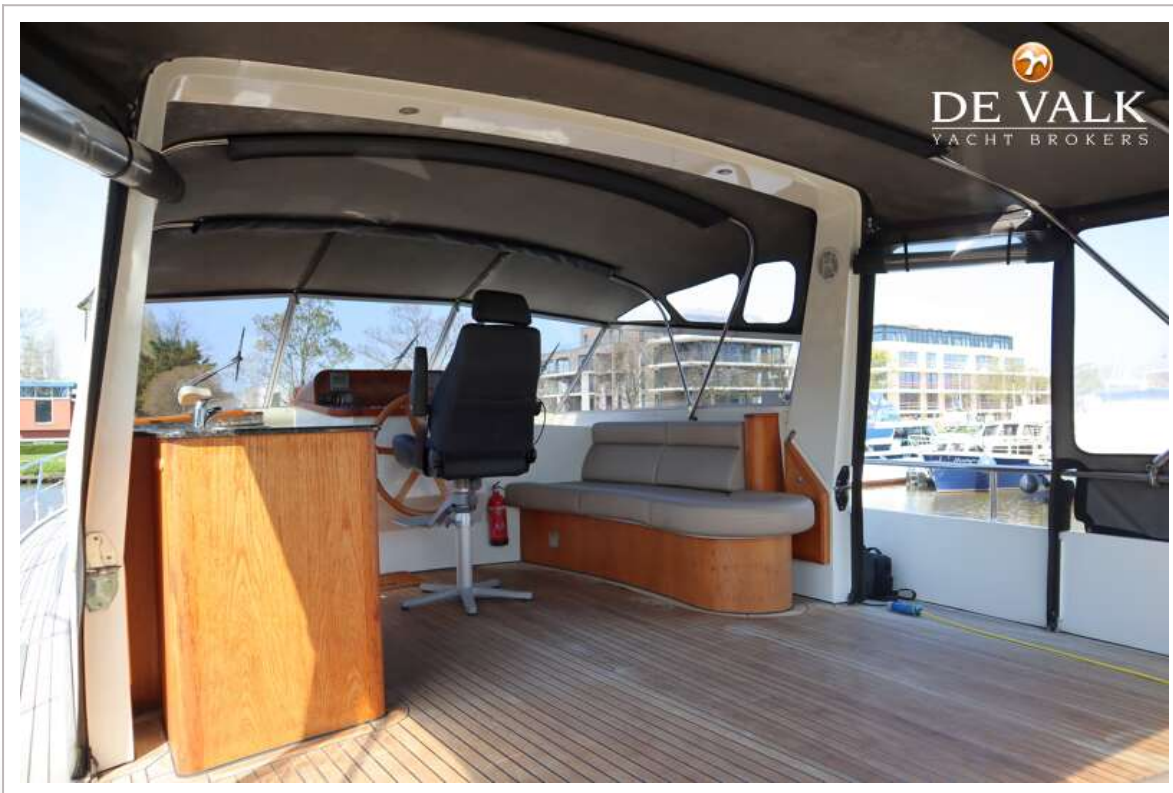


# ZIJLMANS EAGLE 1500 CABRIO





# ZIJLMANS EAGLE 1500 CABRIO

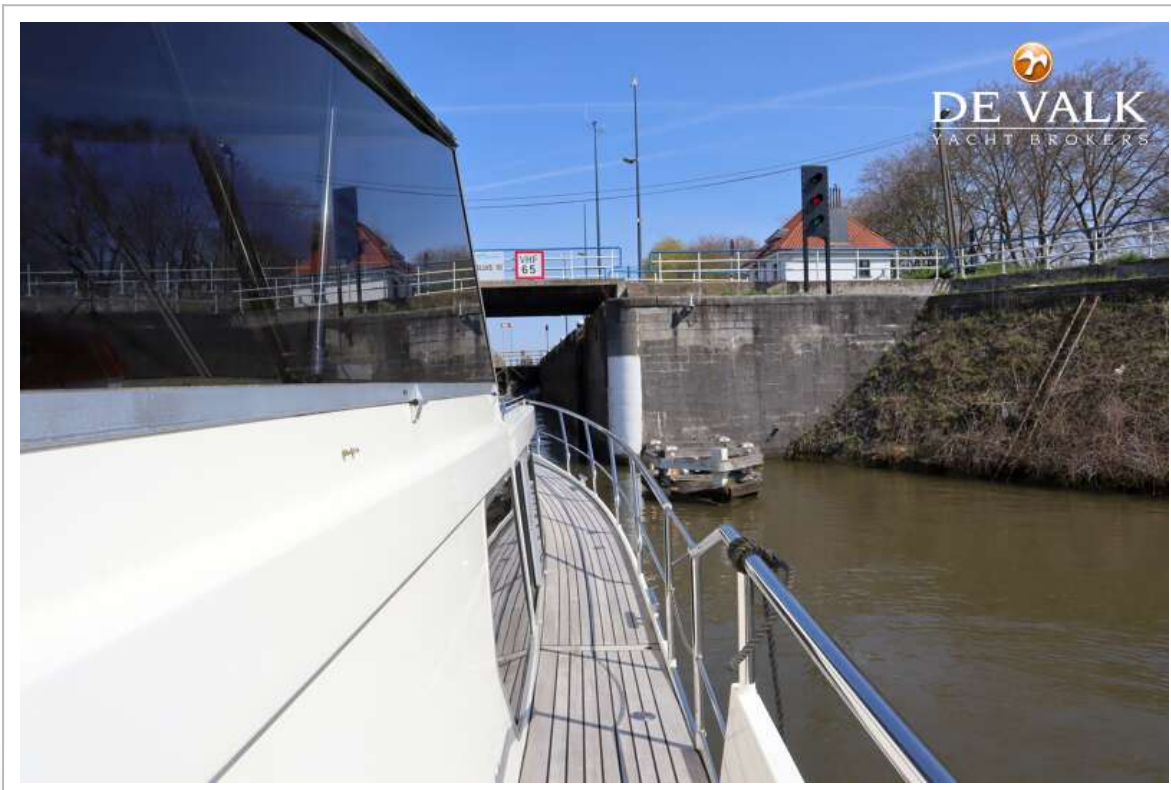


# ZIJLMANS EAGLE 1500 CABRIO





# ZIJLMANS EAGLE 1500 CABRIO





# ZIJLMANS EAGLE 1500 CABRIO



# ZIJLMANS EAGLE 1500 CABRIO

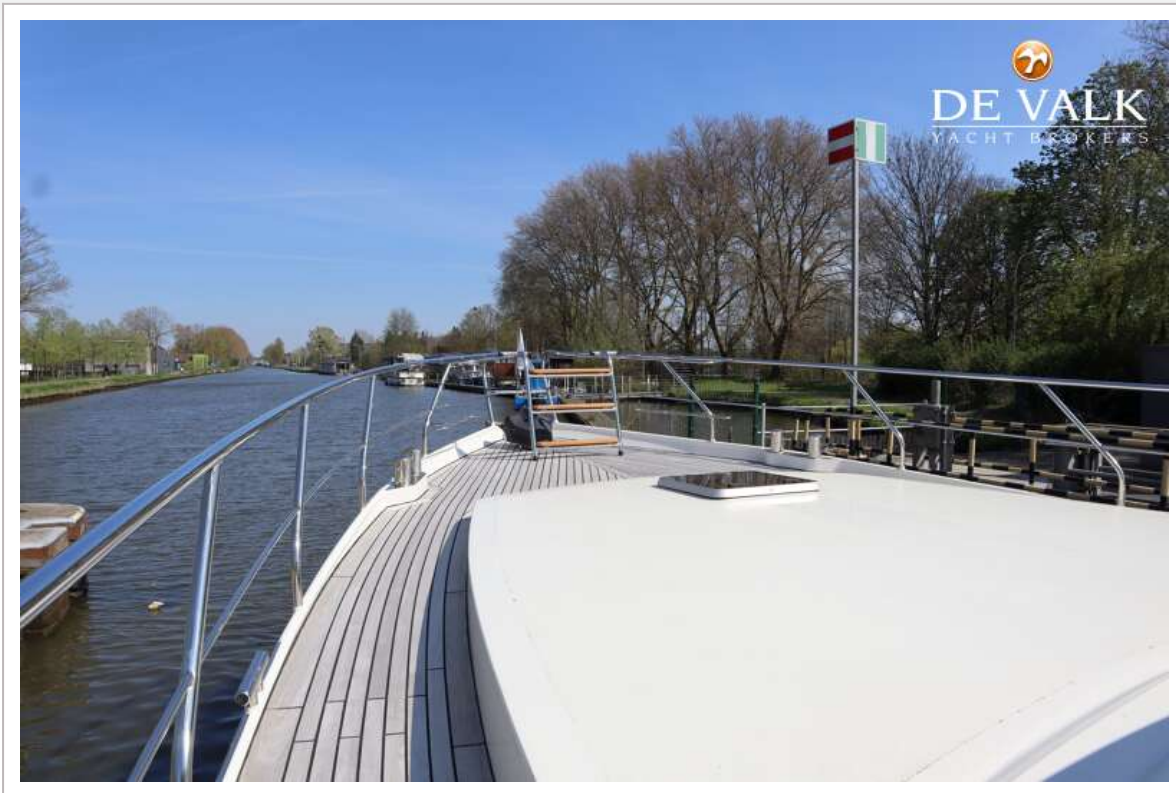




# ZIJLMANS EAGLE 1500 CABRIO

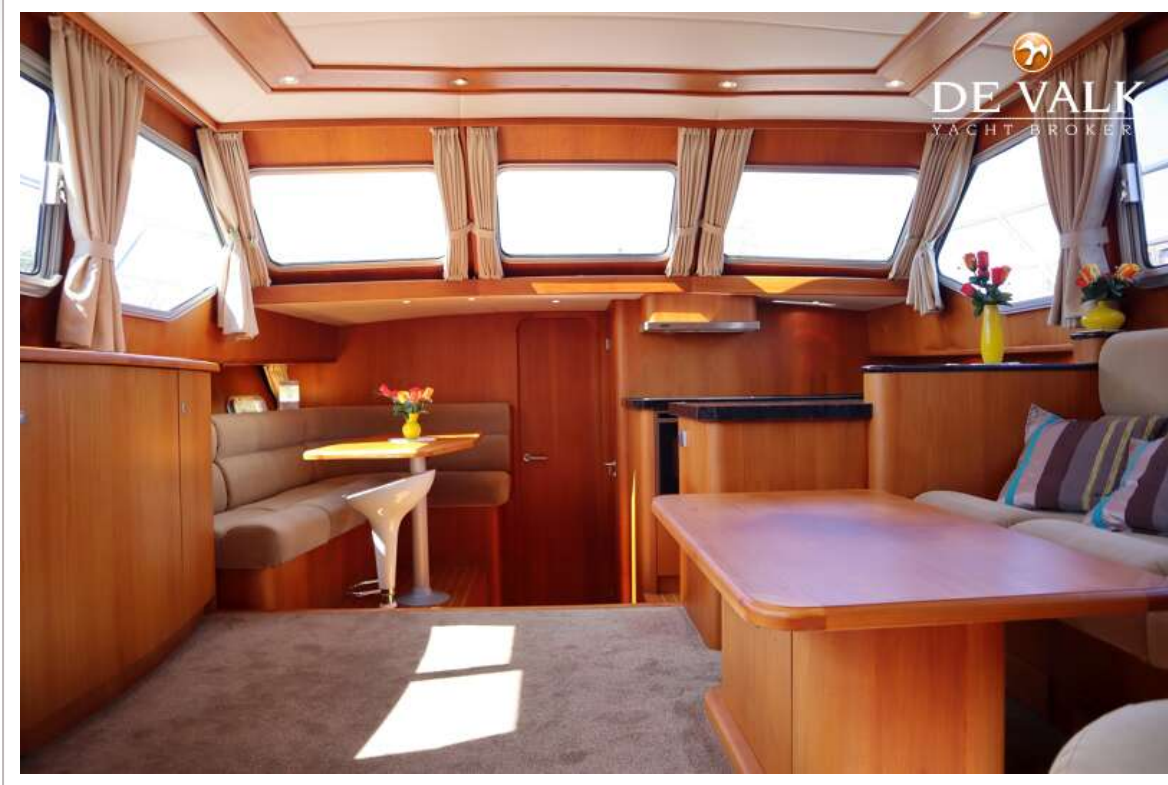


# ZIJLMANS EAGLE 1500 CABRIO



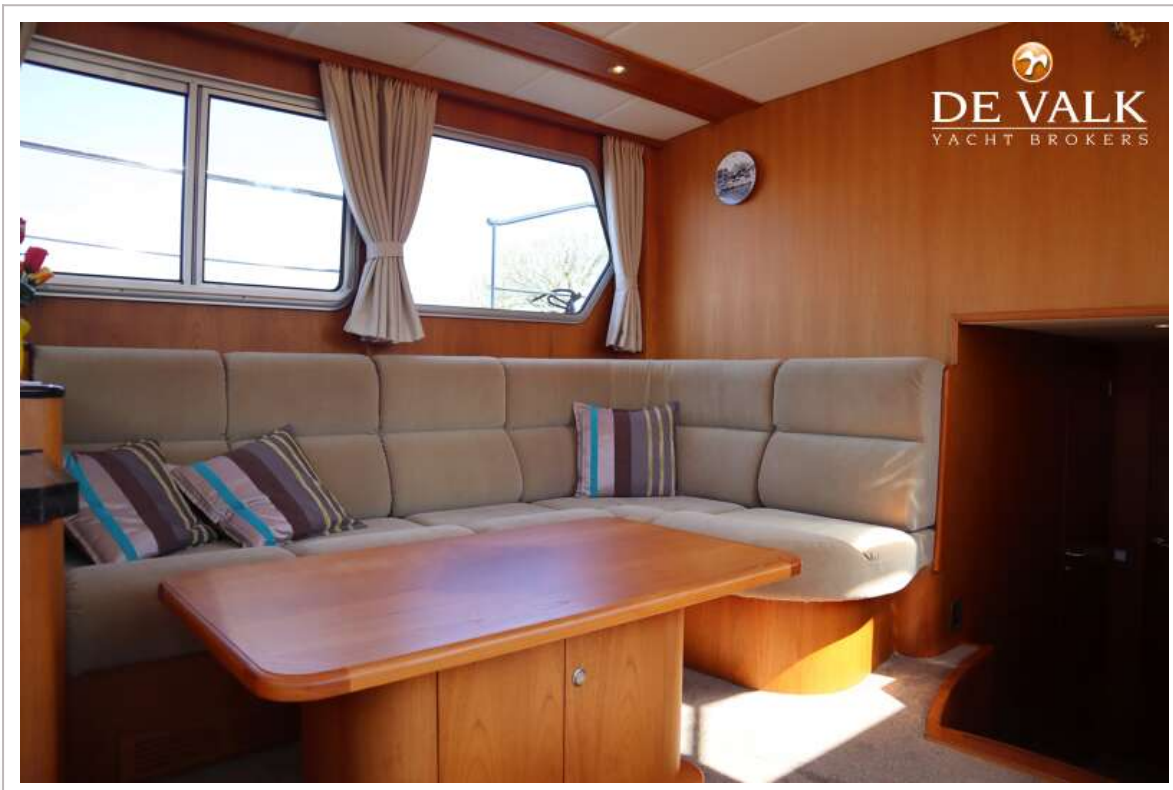


# ZIJLMANS EAGLE 1500 CABRIO

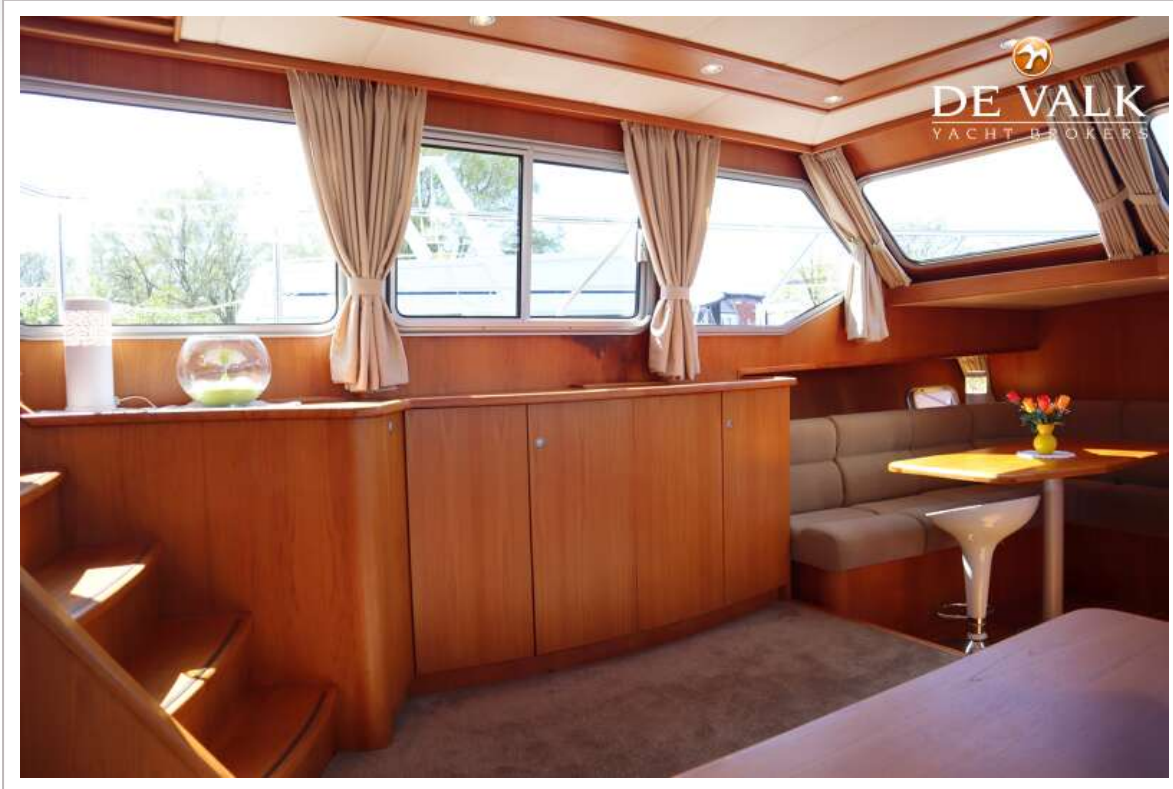




# ZIJLMANS EAGLE 1500 CABRIO

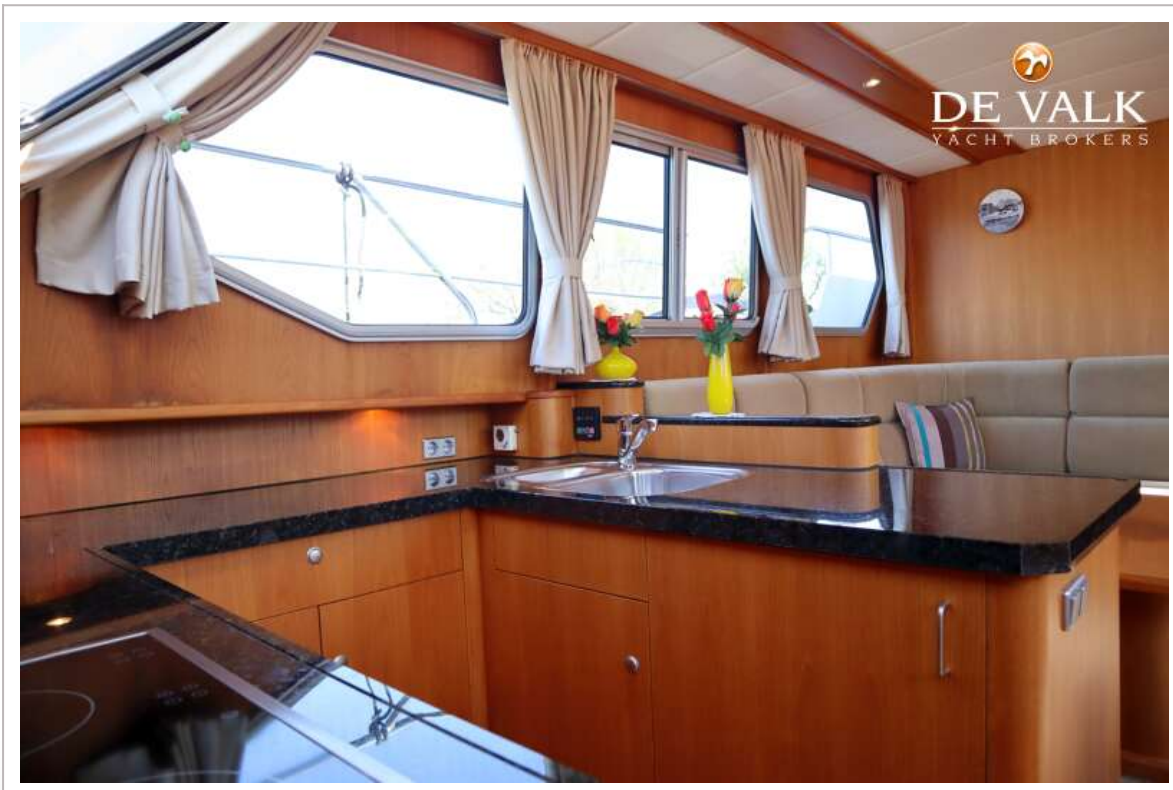


# ZIJLMANS EAGLE 1500 CABRIO

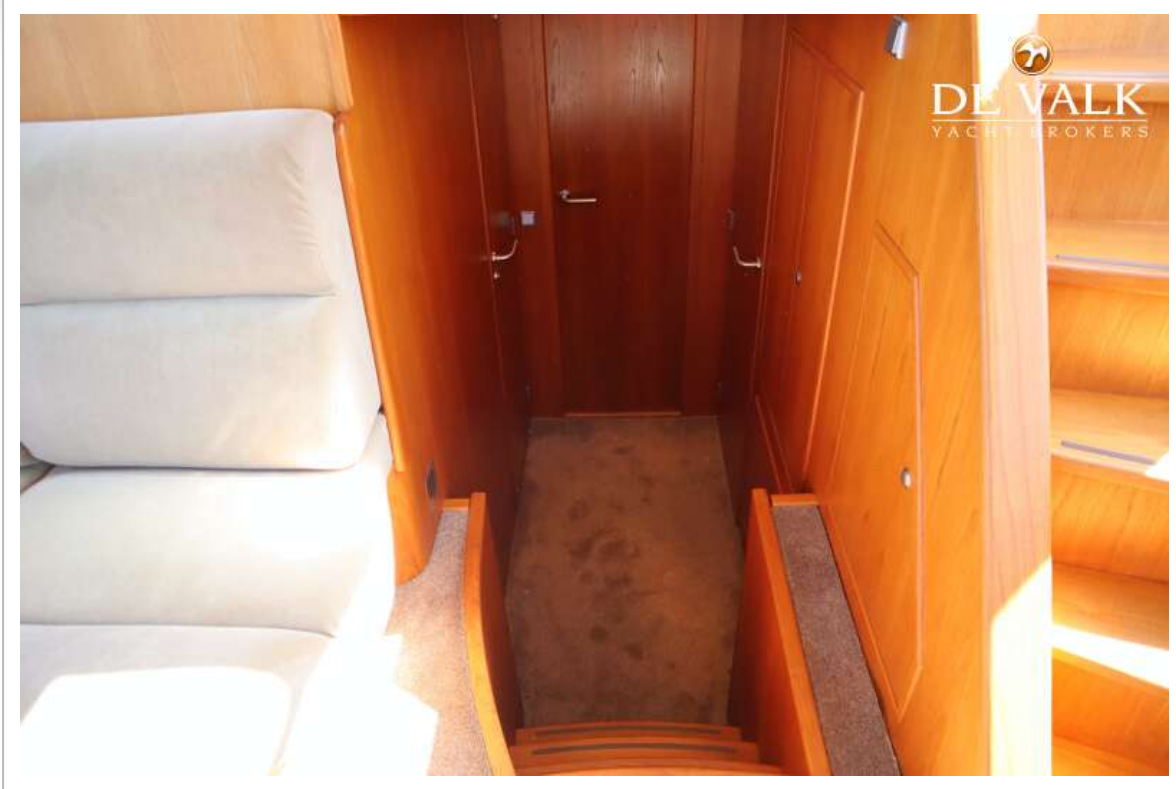




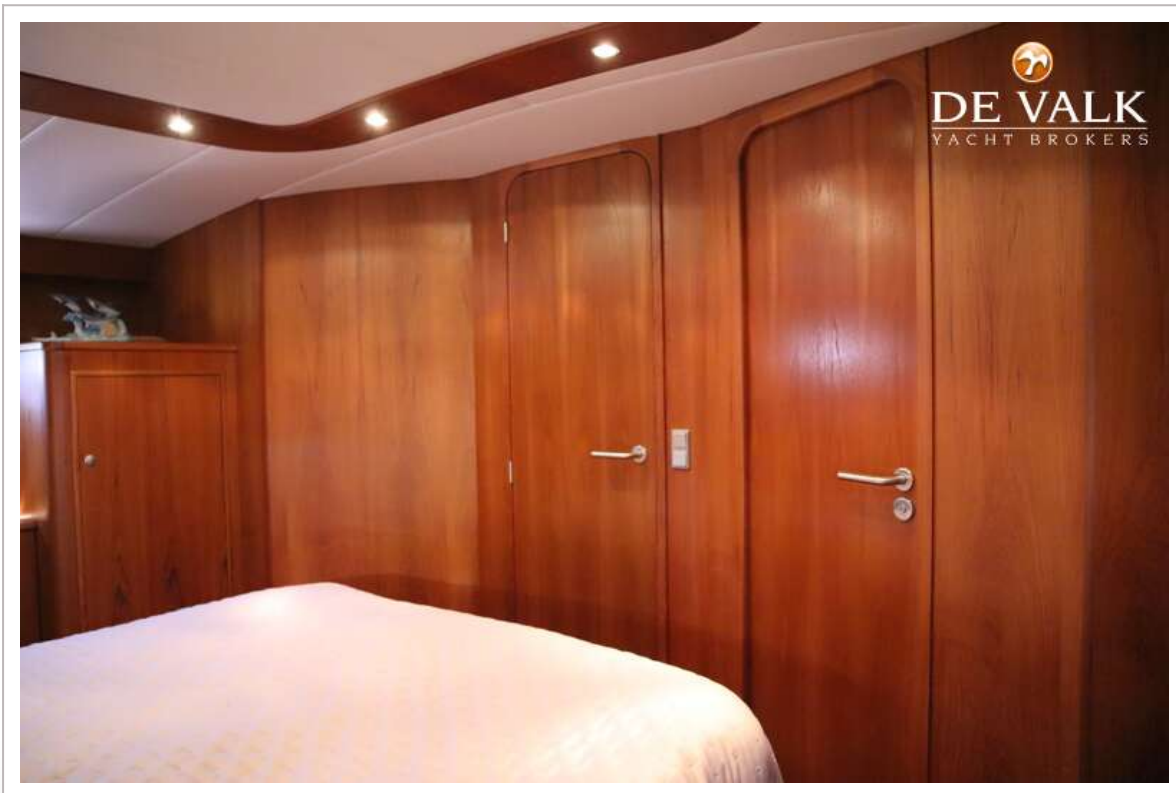
# ZIJLMANS EAGLE 1500 CABRIO



# ZIJLMANS EAGLE 1500 CABRIO

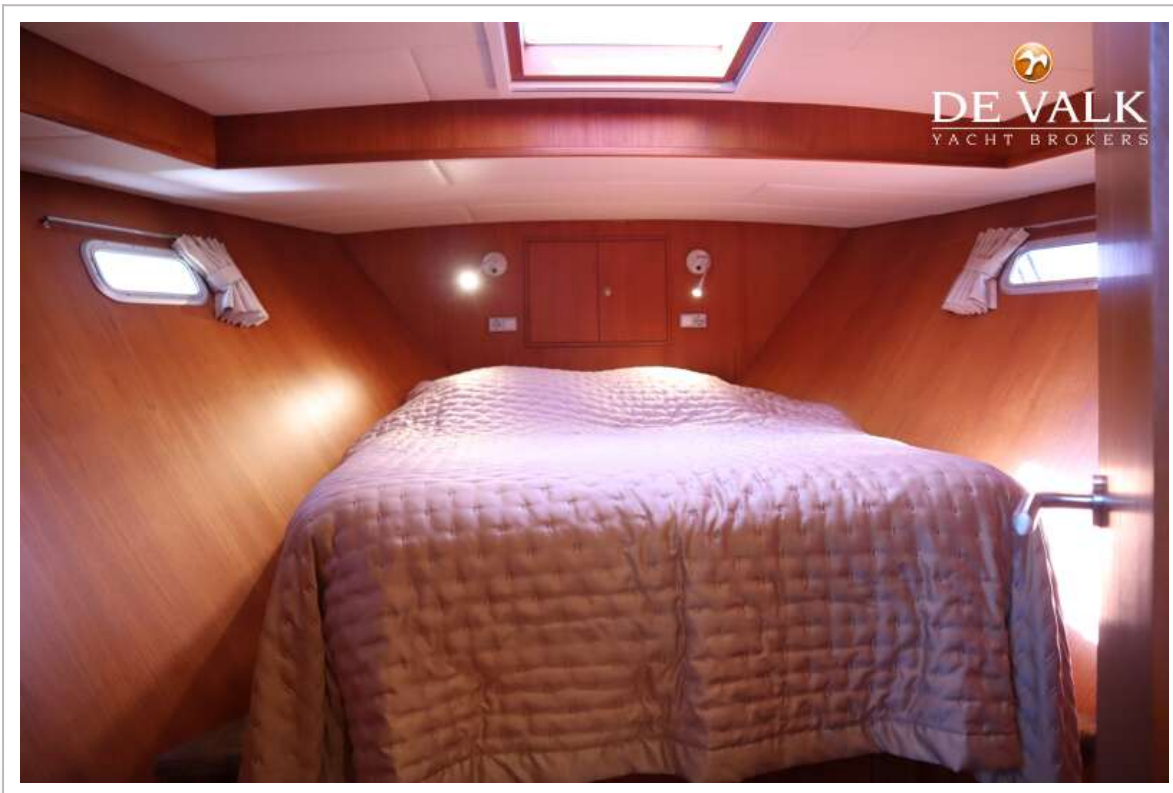


# ZIJLMANS EAGLE 1500 CABRIO





# ZIJLMANS EAGLE 1500 CABRIO

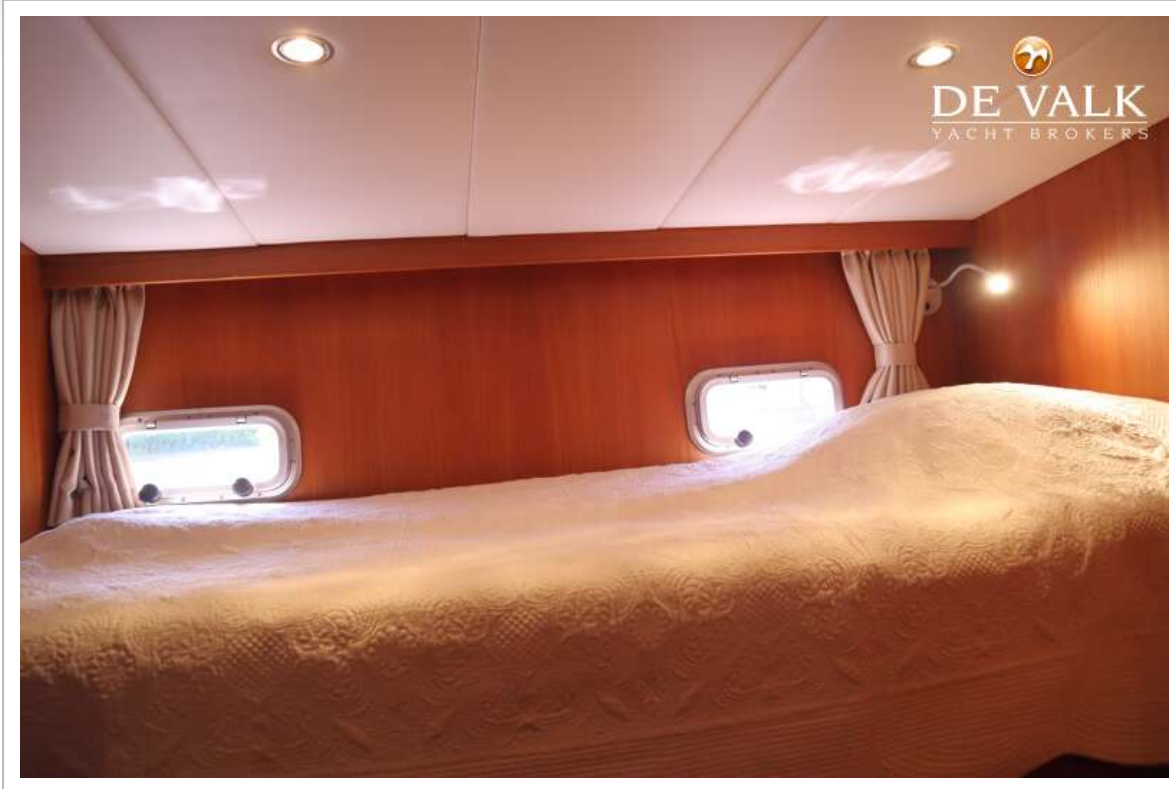


# ZIJLMANS EAGLE 1500 CABRIO

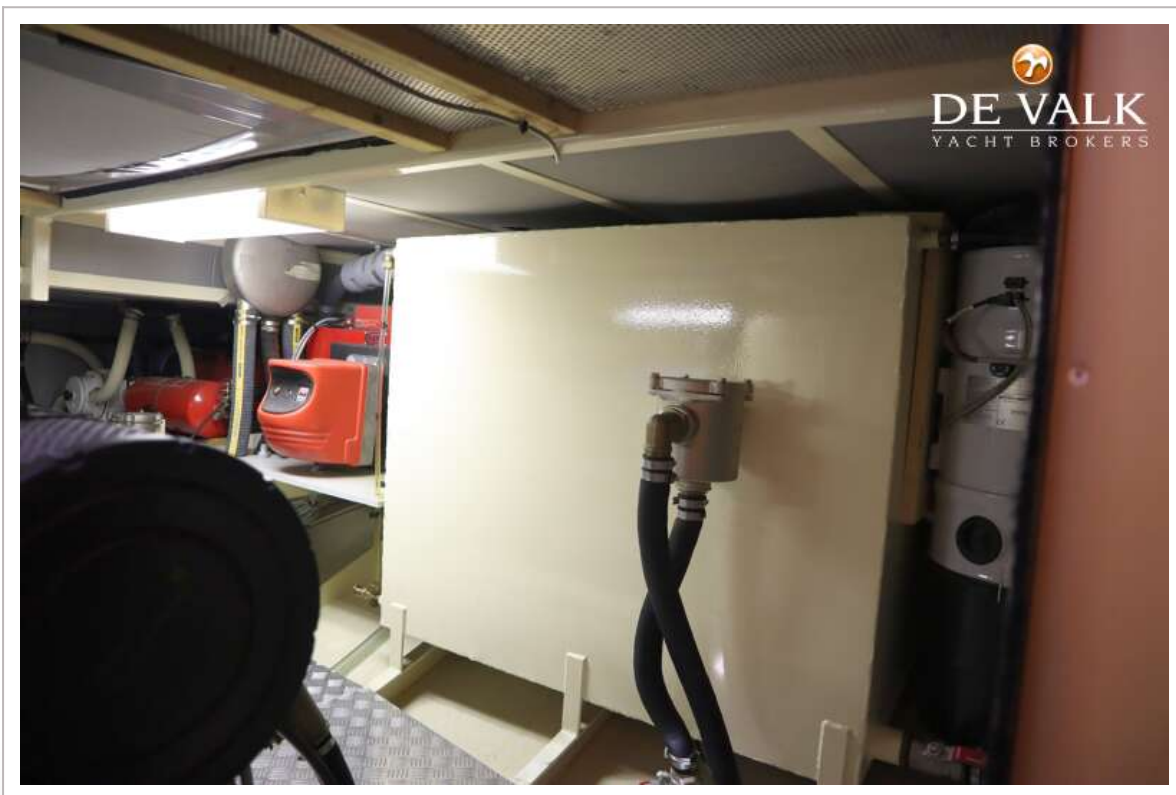




# ZIJLMANS EAGLE 1500 CABRIO



# ZIJLMANS EAGLE 1500 CABRIO





# ZIJLMANS EAGLE 1500 CABRIO

