



S/Y CUSTOM MADE MARC LOMBARDI CIGALE 18



S/Y CUSTOM MADE MARC LOMBARDI CIGALE 18

BROKER'S COMMENTS

CUSTOM MADE CIGALE 18 "INDININI" is an 18m Aluminium Sailboat designed by Marc Lombard, built in Turkey with welders from the Yildiz Yard. Propulsion for CIGALE 18 involves: the saildrive, electric motor, motor controller, battery management system (BMS), batteries, 110/220v charger, solar charge controller and solar panels. INDININI has 17tons. modern, lightweight, performance hull.

Sofia Iliia-Salvanou

SPECIFICATIONS

Dimensions	18.00 x 5.10 x 2.80 (m)	Builder	AFS YACHTS
Built	2020	Cabins	3
Material	Aluminium	Berths	6
Engine(s)	1 x SME S.P.A.Traction M SHRIMP001225-90 elec	Hp/Kw	92.00 (hp), 67.71 (kw)
Asking price	€ 450.000 (VAT Not paid)	Lying	elsewhere / Not at sales office

CONTACT

Sales office	De Valk Corfu	Telephone	(+30) 266 111 8095
Address	New Port of Corfu, near Gouvia Marina 490 83 Corfu GR	E-mail	corfu@devalk.nl

DISCLAIMER

These particulars are given in good faith as supplied but cannot be guaranteed.



S/Y CUSTOM MADE MARC LOMBARDI CIGALE 18

GENERAL

Model	S/Y CUSTOM MADE MARC LOMBARDI CIGALE 18
Type	sailing yacht
LOA (m)	18,00
LWL (m)	17,50
Beam (m)	5,10
Draft (m)	2,80
Air draft (m)	26,00
Headroom (m)	2,10
Year built	2020
Launched	2022
Builder	AFS YACHTS
Country	Turkey
Designer	Marc Lombard
Displacement (t)	17
Ballast (tonnes)	lead 4
CE norm	NA
Hull material	aluminium
Hull colour	Pastel Turquoise
Hull thickness (mm)	6 below waterline, 5 sides, 4 Deck
Hull shape	Single chine, round bottom
Keel type	bulb keel
Superstructure material	aluminium
Rubbing strake	N/A
Deck material	aluminium
Deck finish	non-skid paint
Antifouling (year)	DEC 2022
Dorades	N/A
Window frame	aluminium 12MM Plexiglass coachroof windows
Window material	12 & 20 mm Plexiglass
Deckhatch	yes



Portholes	20 mm Plexiglass
Fuel tank (litre)	aluminium
Freshwater tank (litre)	aluminium
Blackwater tank (litre)	aluminium 55
Greywater tank (litre)	aluminium 55
Wheel steering	cable steering Chain/
Outside helm position	cable steering
Emergency tiller	Stainless

ACCOMMODATION

Cabins	3
Berths	6
Crew cabin	N/A
Interior	Painted wood & fiberglass
Floor	25mm alumin, honeycomb covered with self levelling epoxy
Heating	N/A
Air-conditioning	N/A
Navigation center	Space reserved for it but not installed
Galley	yes
Countertop	plastic
Sink	GRP
Cooker	Electrolux induction
Oven	Electric
Extractor	N/A
Gas alarm	N/A
Microwave	N/A
Fridge	250 Lt Top door
Freezer	125 Lt Top door
Hot water system	N/A
Water pressure system	electrical
Owners cabin	French bed



Wardrobe	Under bed
Bathroom	en suite
Toilet	en suite
Toilet system	electric
Wash basin	at the toilet
Shower	en suite
Guest cabin 1	double bed
Wardrobe	Under bed
Bathroom	separate
Toilet	separate
Toilet system	electric
Wash basin	in the bathroom
Shower	separate
Guest cabin 2	bunk bed
Wardrobe	Under bed
Bathroom	separate
Toilet	separate
Toilet system	electric
Wash basin	at the toilet
Shower	separate

MACHINERY

No of engines	1
Make	SME S.P.A.Traction M
Type	SHRIMP001225-90
HP	92
kW	67.71
Fuel	electric
Year installed	2021
Maximum speed (kn)	7
Cruising speed (kn)	6



Range (nm)	30
Engine hours	40
Engine cooling system	aircooling
Drive	sail-drive
Engine controls	electrical
Bowthruster	N/A
Sternthruster	N/A
Propeller type	feathering BRUNTONS ECO STAR
Propeller blades	3
Propeller shaft material	stainless steel
Shaft lubrication	N/A
Manual bilge pump	yes
Electric bilge pump	X 5
Bilge alarm	N/A
Generator	N/A
Batteries	yes
Start battery	38 Kwh LIFE P04 96V
Service battery	20 Kwh LIFE P04 24V
Windlass battery	Runs from house Battery
Battery charger	2500 W, 220V Charger fot Motor Battery
Inverter	VICTRON Phoenix 5Kw
Wind generator	500W
Solar panel	2Kw
Shorepower	with cable
Insulation transformer	N/A
Watermaker	Zen 30 Schenker
Stabilizers	N/A

NAVIGATION

Compass	Electronic
Depth sounder	Transducer Airmar 812



VHF	Cobra
VHF handheld	Cobra
Autopilot	B&G T2 Ram, current opensource autopilot
GPS	From AIS
Plotter	N/A
Wifi antenna	External Mikrotik ACS2 outdoor access point
AIS transceiver	yes
EPIRB	yes
Navigation lights	yes

EQUIPMENT

Sprayhood	Includes over door & seating
Anchor	3 X 45 Kg Mantus Marine M1
Anchor chain	2 X 100 m, 10mm
Windlass	LOFRANS SX3 1700W
Dinghy	inflatable 2,5 m
Outboard	2 stroke 4 Hp Mariner
Sea railing	yes
Pushpit	yes
Pulpit	yes
Life raft	New April 2022
Life raft (pers)	4
Last life raft survey	April 2022
Lifejackets	6 X Adults plus 2 X children
Lifebuoy	X 2
Horn	Hand held
Fenders	6 X Tube, 2 X Ball
Mooring lines	NEW, unused 100m 18mm & 4X 10m 18mm
Tools	Hand & power tools
TV	55' SAMSUNG
Surround Sound System	2 Speakers system controlled by phone



Fire extinguisher

X 3

RIGGING

Standing rigging

wire

Brand mast

Seldén

Material mast

aluminium

Spreaders

X 2

Mainsail

Ullman Contender Hybrid Fabric

Mainsail cover

yes

Fully battened mainsail

yes

Genoa

Ullman Contender Hybrid Fabric

Staysail

Ullman Contender Hybrid Fabric

Reefing System

main in-boom furling

Backstay adjuster

hydraulic

Boomvang

Selden Kicker

Primary sheet winch

Main sheeet winch 1 X Harken 60

Genoa sheetwinches

4X Harken 70

Halyard winches

2 X Harken 50

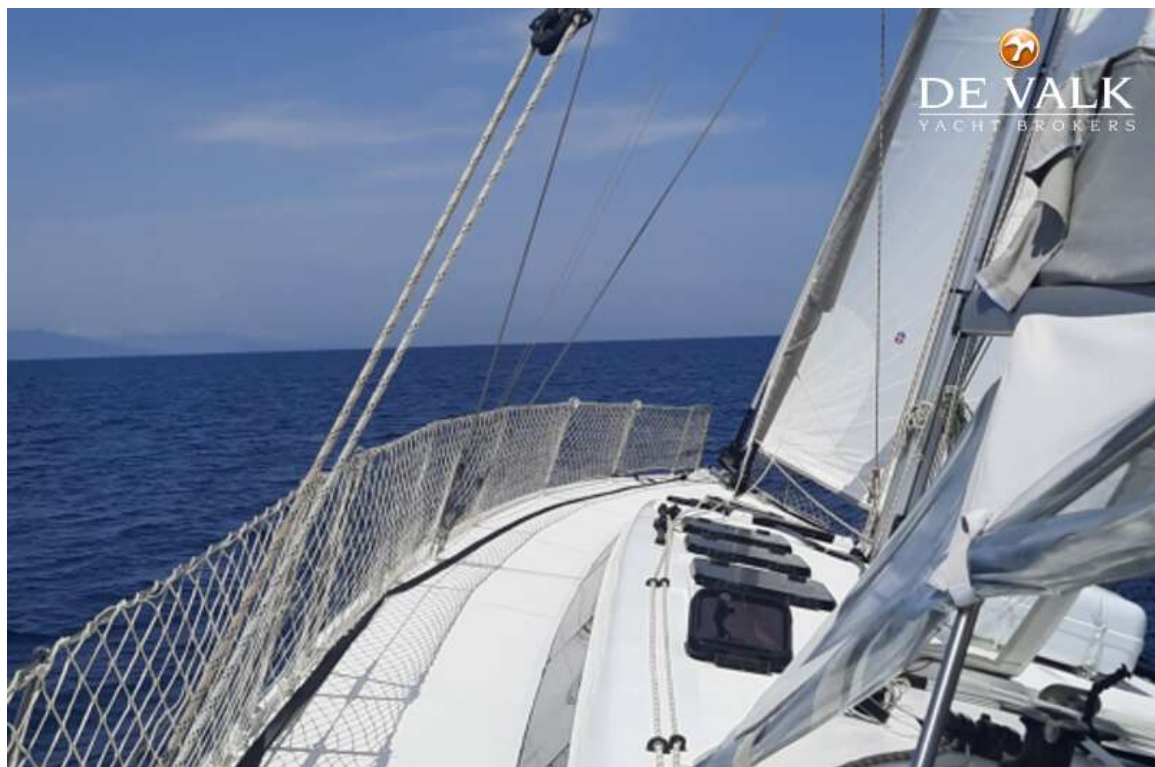
Extra info

Main car winches 2 X Harken 40



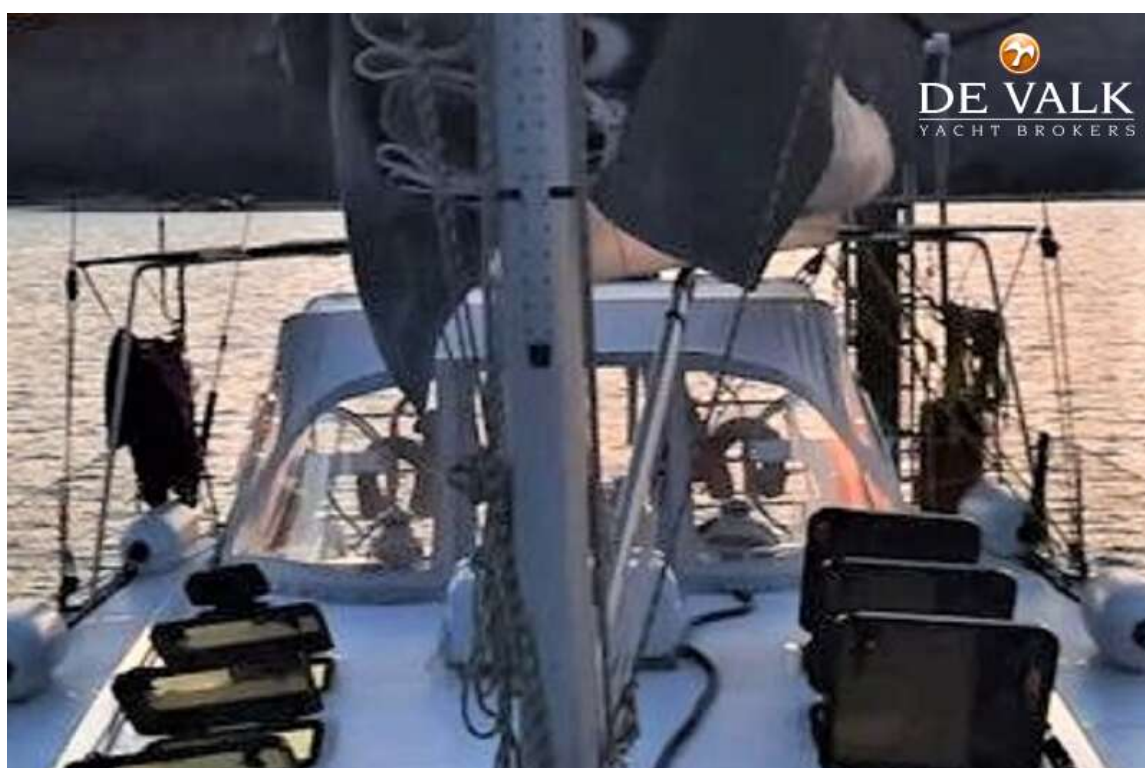


S/Y CUSTOM MADE MARC LOMBARDI CIGALE 18

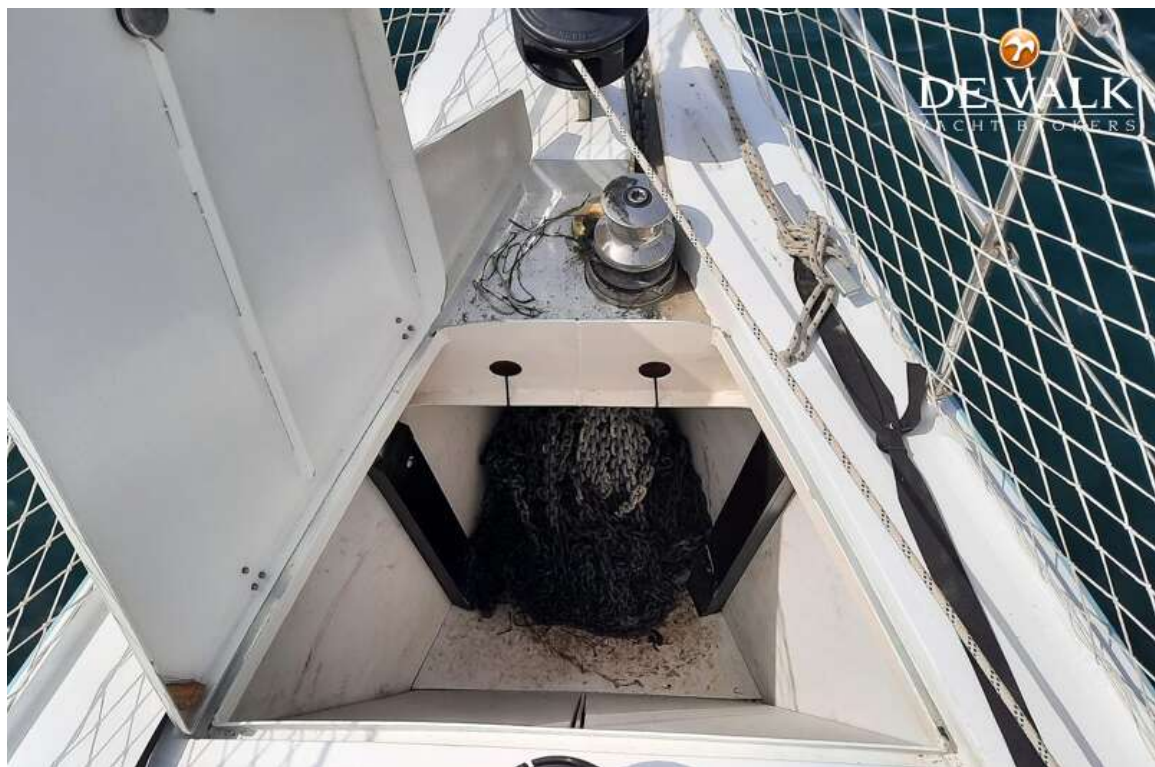


S/Y CUSTOM MADE MARC LOMBARDI CIGALE 18





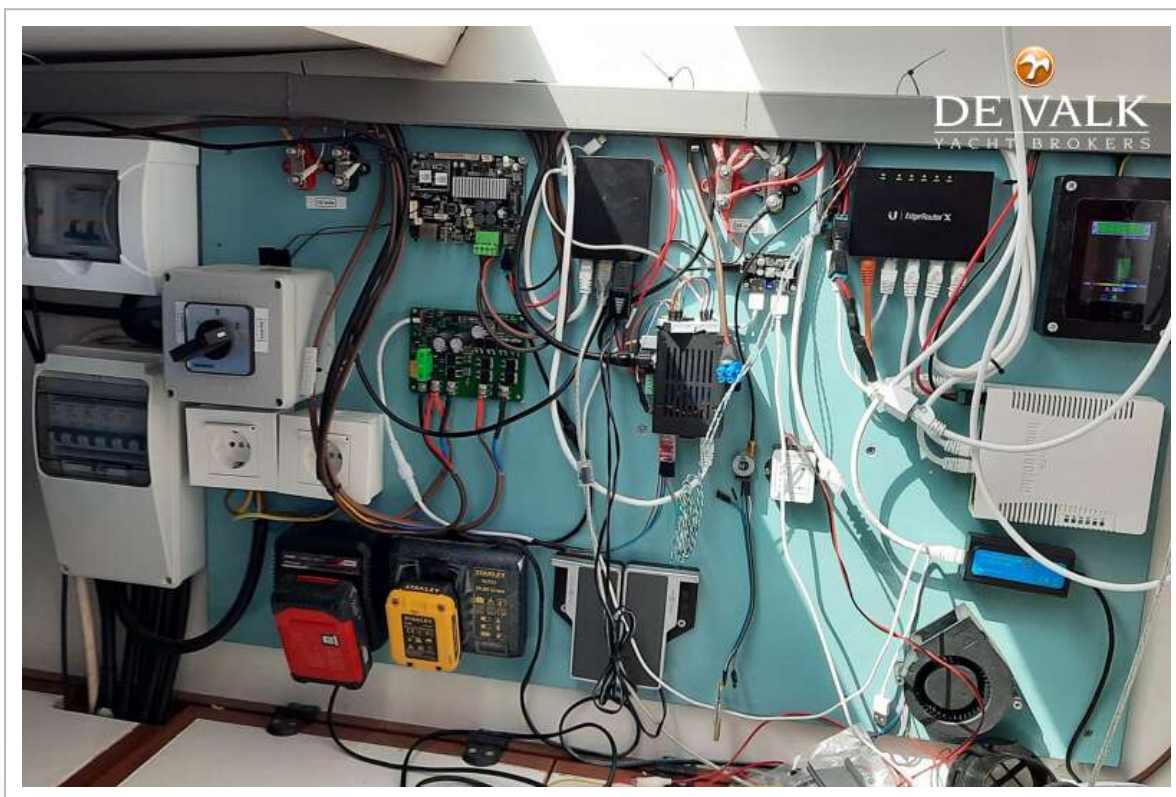




S/Y CUSTOM MADE MARC LOMBARDI CIGALE 18





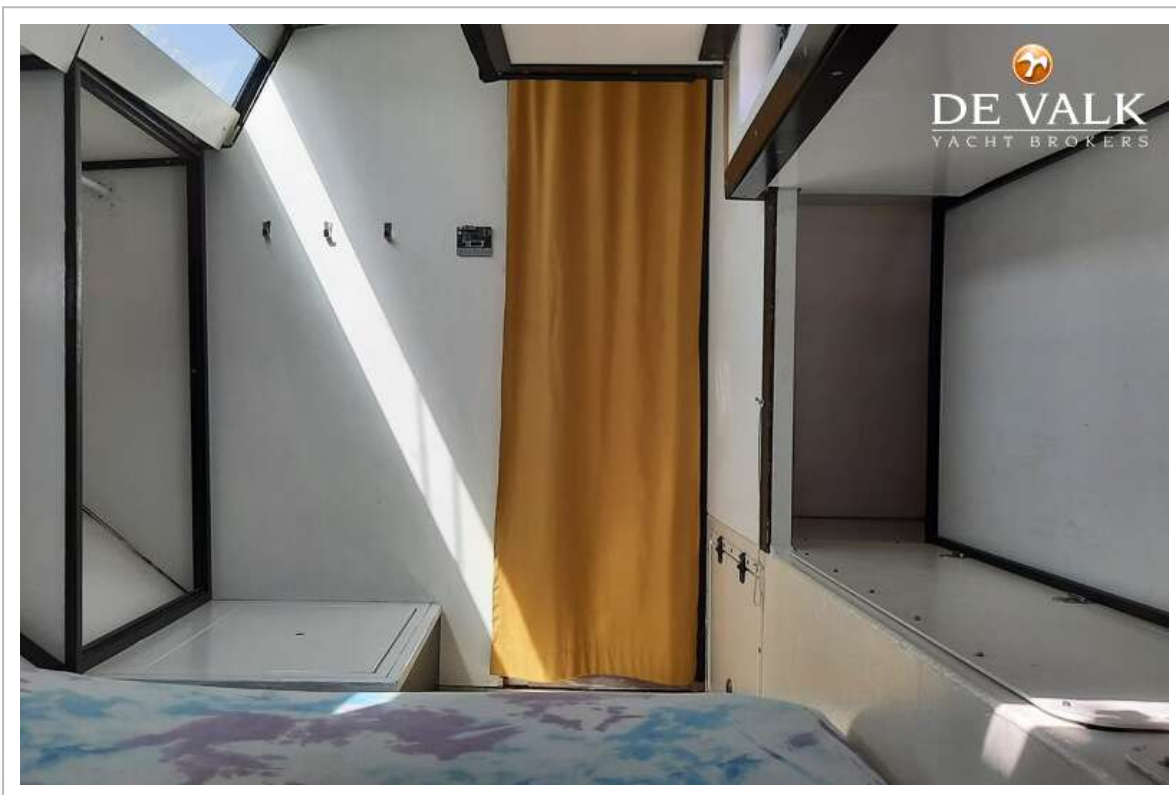


S/Y CUSTOM MADE MARC LOMBARDI CIGALE 18



S/Y CUSTOM MADE MARC LOMBARDI CIGALE 18







S/Y CUSTOM MADE MARC LOMBARDI CIGALE 18







