



VIKNES 1030



VIKNES 1030

BROKER'S COMMENTS

The Viknes 1030 is pocket offshore motor yacht, a true example of Scandinavian craftsmanship. Easy accessed via the transom door or the gangways. A large and comfortable cockpit and twin helm stations makes this Viknes ideal for in- and offshore cruising under all weather conditions. She offers two comfortable cabins and the decksalon / pilothouse is cosy, comfortable and offers you a 360 degree panoramic view. Equipped with a powerful Yanmar diesel, bow- and stern thruster. She is located in our sales marina in Katwoude.

Harald Padberg

SPECIFICATIONS

Dimensions	10.96 x 3.42 x 1.00 (m)	Builder	Viknes Bat of Service AS
Built	2011	Cabins	2
Material	GRP	Berths	4
Engine(s)	1 x Yanmar 6LPA-STP2 diesel	Hp/Kw	315.00 (hp), 231.84 (kw)
Asking price	sold (VAT)	Lying	at sales office

CONTACT

Sales office	De Valk Monnickendam B.V.	Telephone	+31 (0)299 65 63 50
Address	Hoogedijk 6 1145 PM Katwoude NL	E-mail	monnickendam@devalk.nl

DISCLAIMER

These particulars are given in good faith as supplied but cannot be guaranteed.



GENERAL

Model	VIKNES 1030
Type	motor yacht
LOA (m)	10,96
LWL (m)	8,77
Beam (m)	3,42
Draft (m)	1,00
Air draft (m)	3,85
Air draft min (m)	2,90
Headroom (m)	2,00
Year built	2011
Builder	Viknes Boat Service AS
Country	Norway
Designer	Sivertsen / Magnussen
Displacement (t)	6
CE norm	B
Hull material	GRP
Hull colour	grey
Hull shape	deep-V
Superstructure material	GRP
Rubbing strake	rubber
Deck material	GRP
Deck finish	non-skid moulded in
Cockpit deck finish	teak
Antifouling (year)	2023
Window frame	aluminium
Window material	tempered glass
Deckhatch	1 X front cabin & 2 X sliding in roof saloon
Portholes	aluminium - 4 X
Mast can be lowered	manual
Fuel tank (litre)	aluminium - 350 L.



Fuel tank 2 (litre)	aluminium - 350 L.
Level indicator (fuel tank)	analog
Freshwater tank (litre)	aluminium - 300 L.
Level indicator (freshwater)	anlaog - 2 X
Blackwater tank (litre)	aluminium - 140 L.
Blackwater tank extraction	deck extraction + uw line
Inside helm position	hydraulic - Bosvik
Outside helm position	hydraulic - Bosvik
Emergency tiller	yes
More info on paintwork	hull is new spray painted in 2020

ACCOMMODATION

Cabins	2
Berths	4
Interior	mahogany
Layout	Spacious and practical salon with U-Sofa and practical seat on the port side that can be electrically pushed forwards/backwards and be either part of a sofa arrangement, or a forward-facing seating area for the co-pilot.
Floor	teak and holly
Pilot house/deck saloon	yes
Headroom saloon (m)	2.00 - 1.85
Sliding roof	yes
Heating	diesel ducted hot air - Eberspächer
Sliding door to cockpit	yes
Galley	at S.B. side
Countertop	Duropol
Sink	stainless steel
Cooker	calor gas
Oven	calor gas
Fridge	12V Isotherm
Hot water system	220V + engine - Quick 40 ltr.



Water pressure system	electrical
Owners cabin	French bed
Bed length (m)	2.00 x 1.55 / 1.40
Wardrobe	hanging and drawers
Guest cabin 1	double bed
Bed length (m)	2.00 x 1.65
Wardrobe	shelves
Bathroom	shared
Toilet	shared
Toilet system	electric
Wash basin	in the bathroom
Shower	shared
Central vacuum cleaner	yes
Extra info	interior lights LED

MACHINERY

No of engines	1
Make	Yanmar
Type	6LPA-STP2
HP	315
kW	231.84
Fuel	diesel
Year installed	2011
Maximum speed (kn)	22
Cruising speed (kn)	7
Engine hours	1.627
Engine cooling system	freshwater heat exchanger
Drive	shaft
Engine controls	electrical - Glendenning **
Gearbox	hydraulic
Bowthruster	electric - SidePower 6 hp



Sternthruster	electric - SidePower 6 hp
Exhaust	watercooled
Propeller type	fixed
Propeller blades	4
Propeller shaft material	stainless steel
Shaft lubrication	water
Manual bilge pump	2 x
Electric bilge pump	1 x
Electrical installation	12/220V
Start battery	1 x Panther 12V/95Ah
Service battery	4 X AGM Semi-Tractie 12V/110 Ah - new June 2022
Battery monitor	2 X digital
Battery charger/inverter	Victron Easy Compact 1600W / 70A
Diode battery combiners	yes
Shorepower	with cable
Trimtabs	Boat-Leveller
Extra info	** Electrical Glendenning Engine Control includes Troll Mode with trolling valve actuators to allow the boat speed slower than that typically obtained with normal engine idle
Extra info	The 1030 is easy to maneuver thanks to the bow and stern thrusters and the trolling valve for slow sailing in the harbor. The bow and stern thrusters can also be controlled by wireless remote control

NAVIGATION

Compass	Silva 100
Electric compass	Via Autopilot
Depth sounder	+ ST40 repeater Raymarine ST60
VHF	Ray240E
Autopilot	+ remote control Raymarine ST Smartpilot
Rudder angle indicator	Via Autopilot
Radar/GPS/plotter	Raymarine Hybrid touch C140W



AIS transponder	Raymarine AIS650 Class-B
Navigation lights	yes
Searchlight	Omnilux + wired remote control

EQUIPMENT

Bimini	+ cockpit side and rear closure
Cockpit cushions	yes
Bathing platform	, includes storage
Boarding ladder	stainless steel
Transom door	yes
Deck shower	yes
Anchor	Bruce
Anchor chain	50 mtr line
Windlass	electrical
Sea railing	stainless steel
Grab rail (superstructure)	stainless steel
Pulpit	stainless steel
Lifebuoy	yes
Wiper	3 X with power wash
Window ventilator	yes
Window heating	Isotherm hot air
Horn	electric
Radar reflector	Trilens
Fenders	yes
Mooring lines	yes
Radio-cd player	Pioneer DEH-5200 SD + Aux
Cockpit speakers	2 X
Speakers in salon	4 X
Clock - barometer	Wempe
Fire extinguisher	yes
Latest extinguisher survey	need to be inspected or replaced





VIKNES 1030



VIKNES 1030





VIKNES 1030



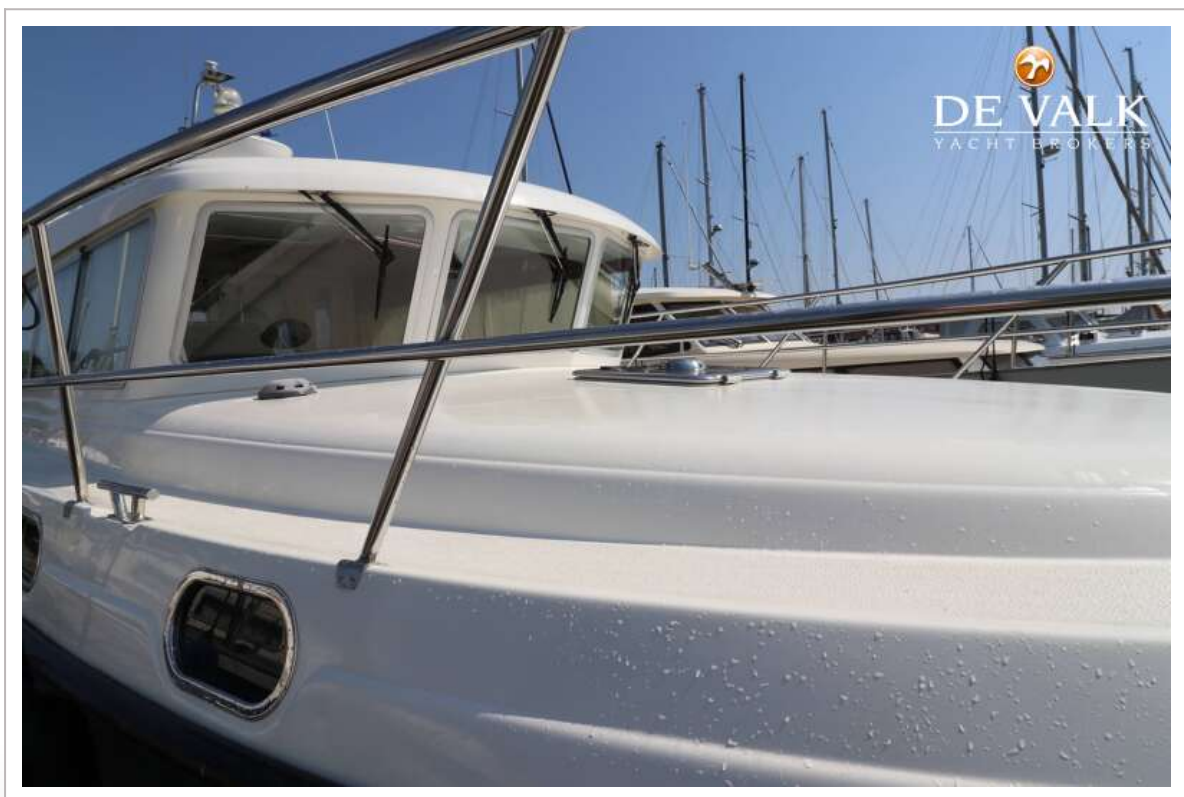
VIKNES 1030



VIKNES 1030



VIKNES 1030



VIKNES 1030



VIKNES 1030



VIKNES 1030



VIKNES 1030



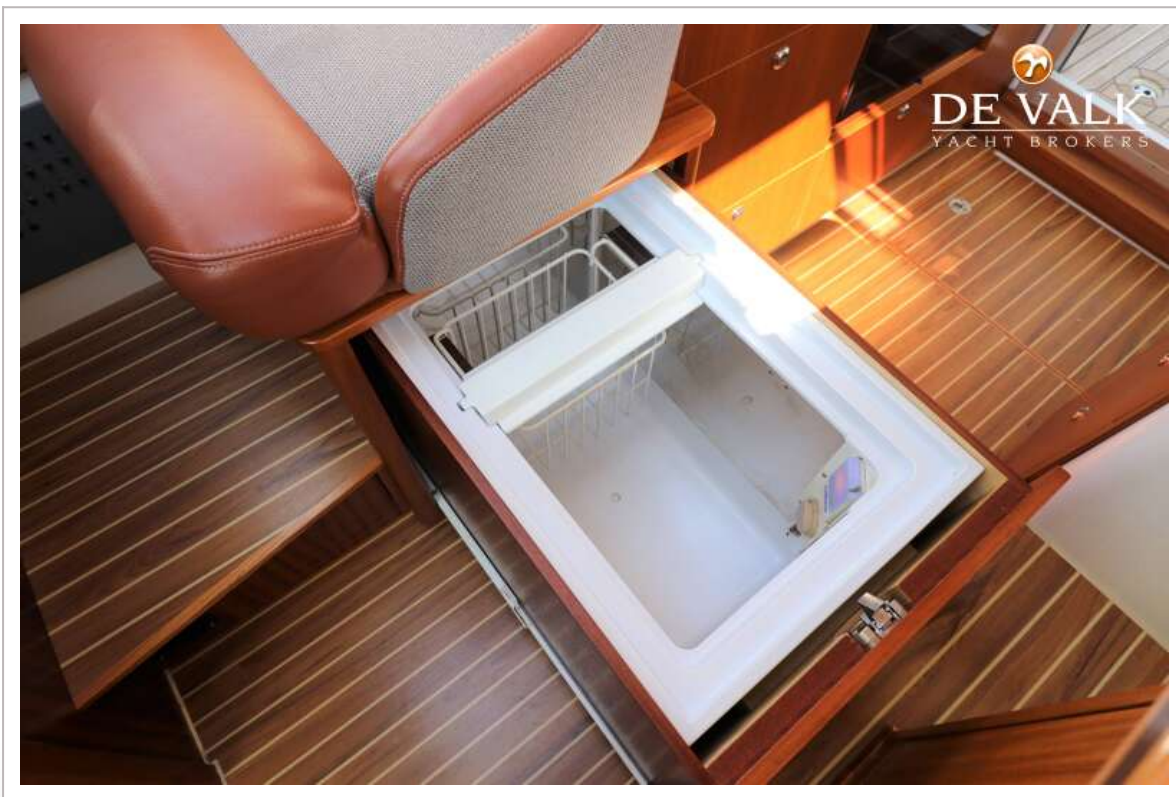
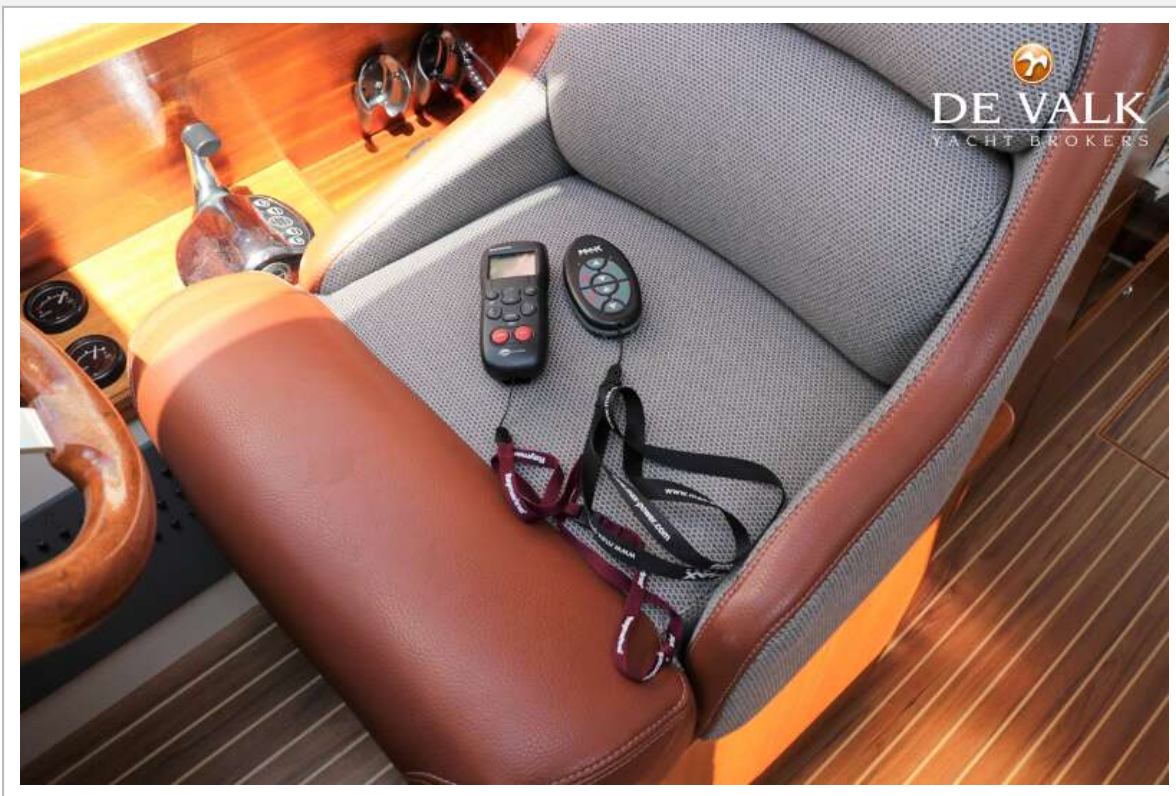
VIKNES 1030



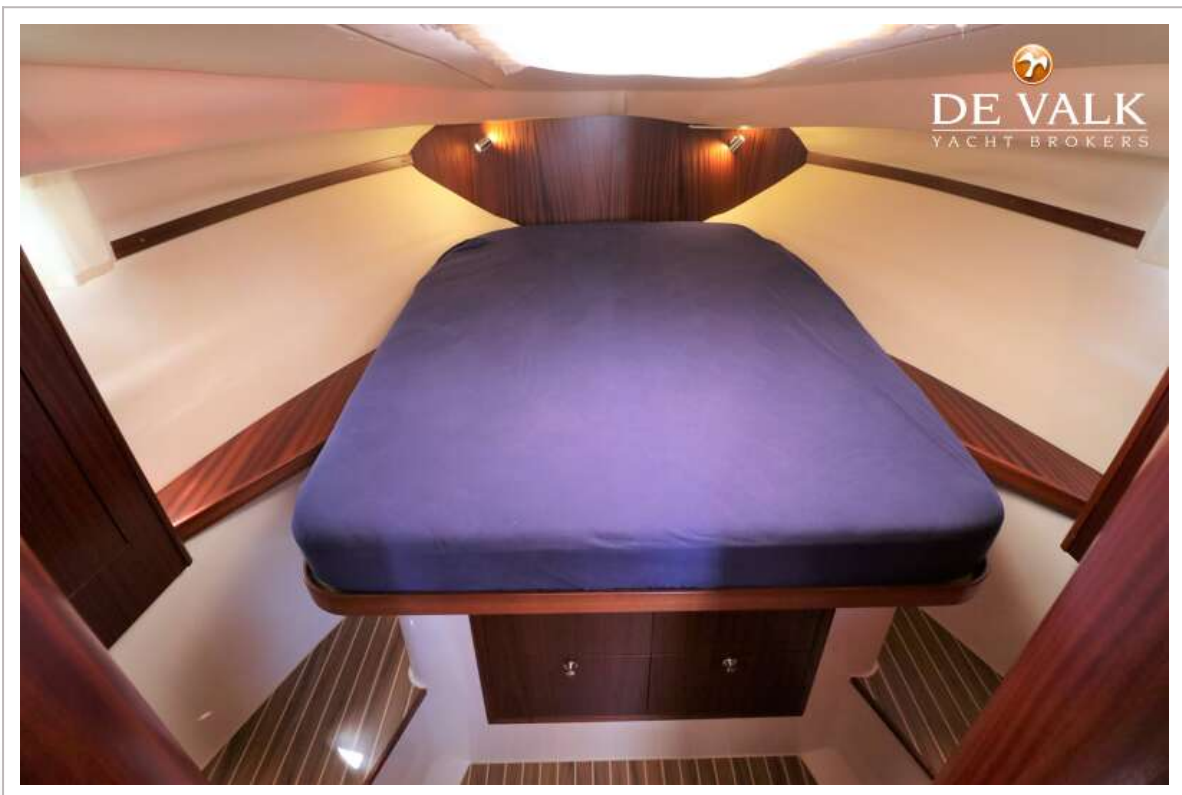
VIKNES 1030



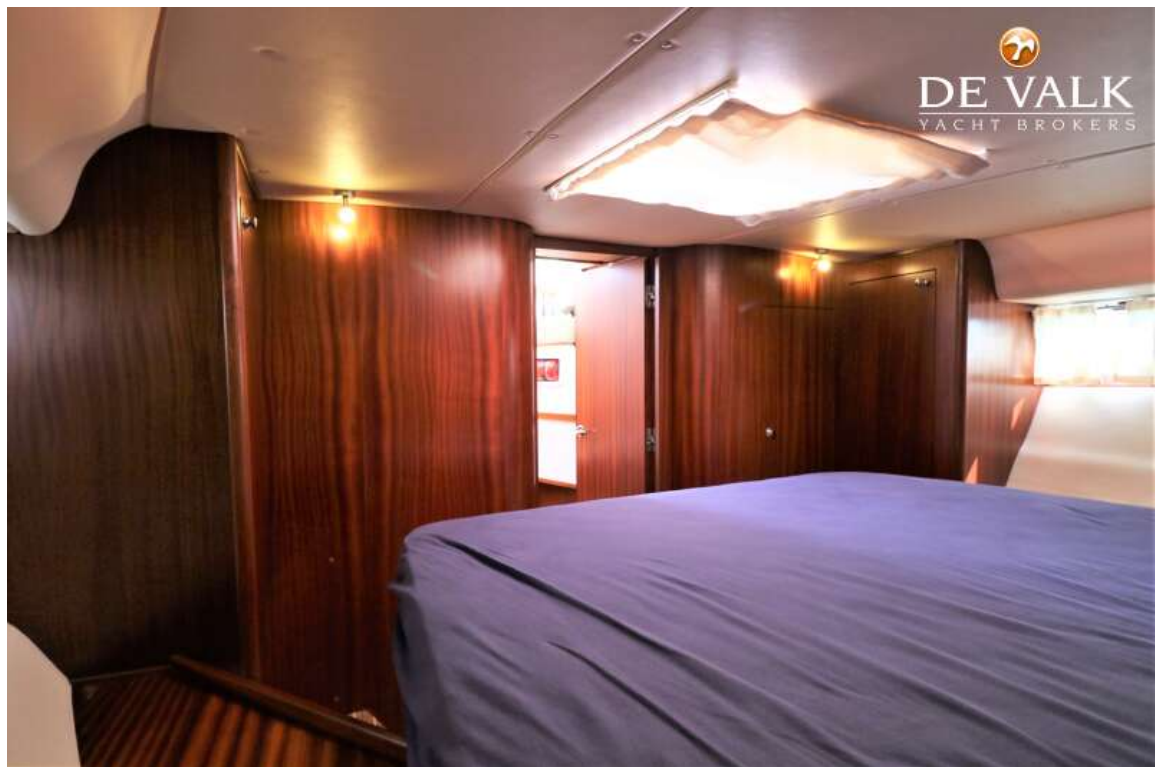
VIKNES 1030



VIKNES 1030

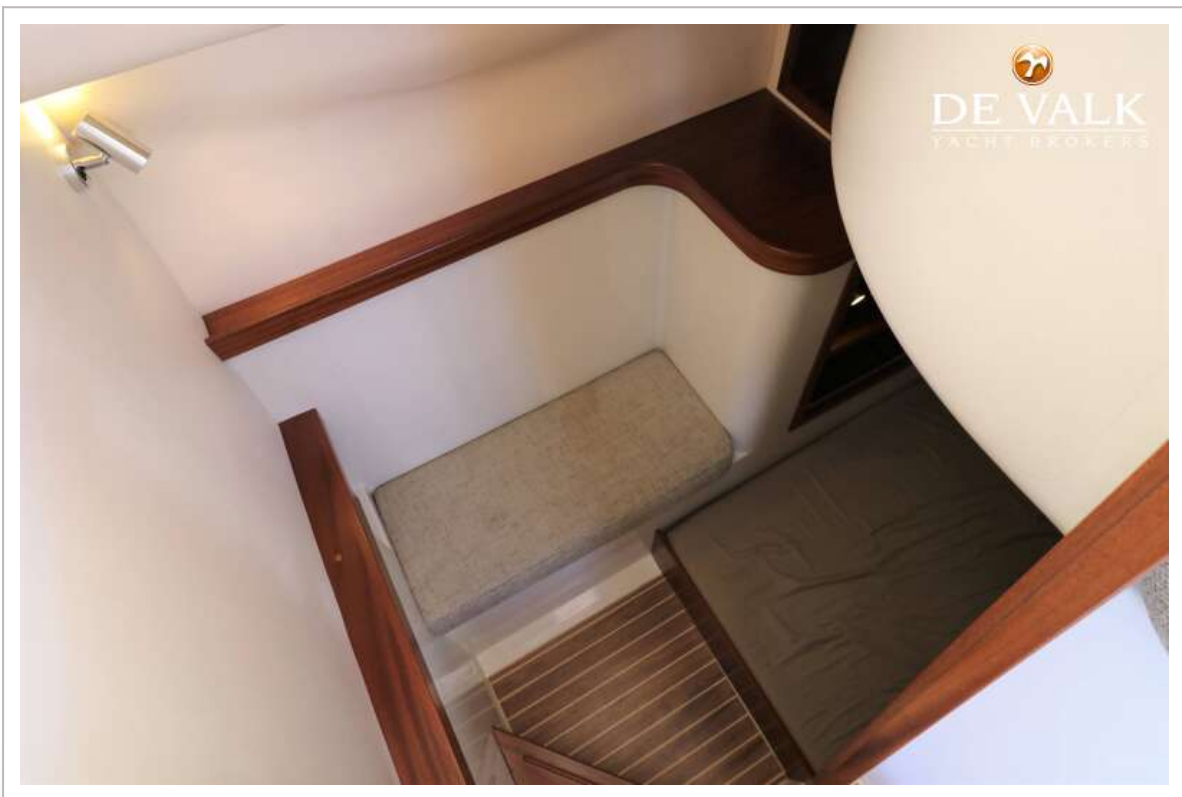


VIKNES 1030

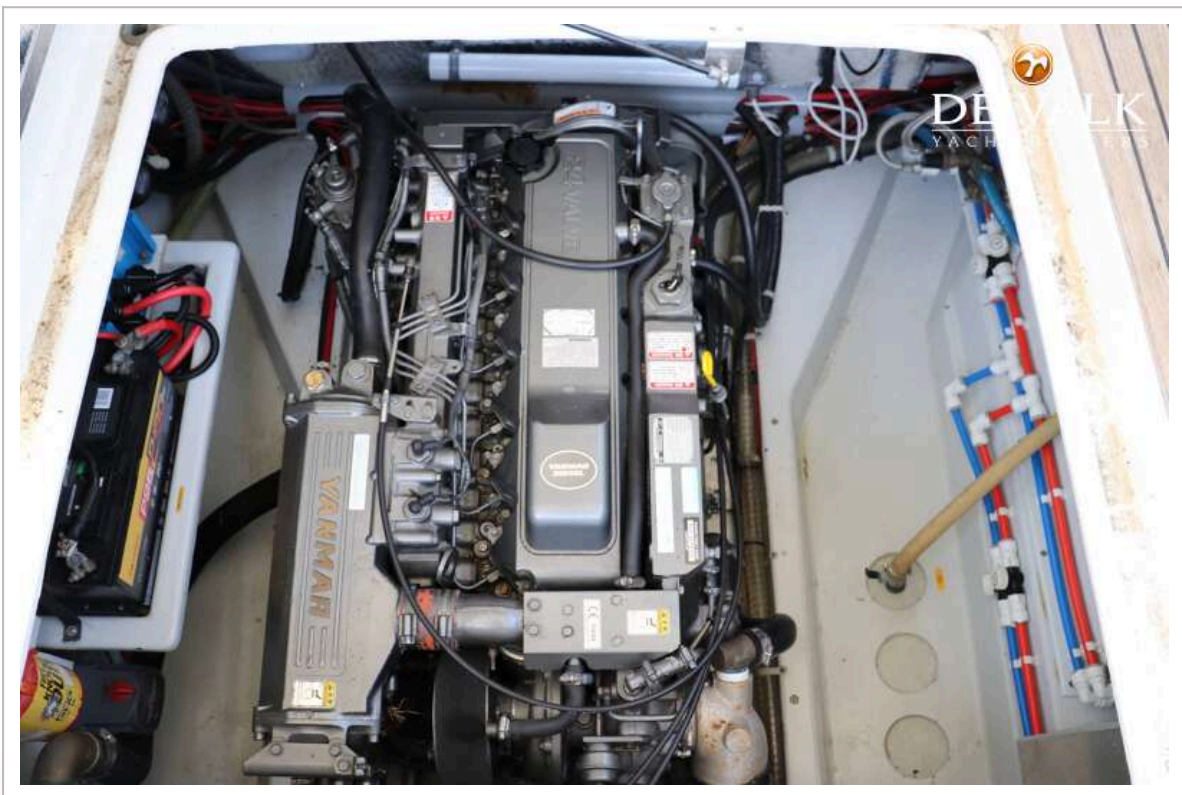


VIKNES 1030





VIKNES 1030







VIKNES 1030

