



DE VALK  
YACHT BROKERS



## DUFOUR 365 GRAND LARGE



DE VALK  
YACHT BROKERS

# DUFOUR 365 GRAND LARGE

## BROKER'S COMMENTS

This Dufour 365 Grand Large, built in 2007, is an excellent choice for those looking for a whole new sense of freedom in style and comfort. Wake up in one of the Dufour 365 Grand Large's 3 spacious and modern cabins. She offers berths for 7 people and is perfect for a sailing trip with family and friends. Equipped with an electric windlass, bow thruster, heating and other extras to make your stay on board as comfortable as possible. `Stoute Lieve` is berthed in our sales marina and can be seen 6 days a week.

*Harald Padberg*

## SPECIFICATIONS

<b>Dimensions</b>	10.81 x 3.65 x 1.90 (m)	<b>Builder</b>	Dufour Yachts, Perigny Cedex
<b>Built</b>	2007	<b>Cabins</b>	3
<b>Material</b>	GRP	<b>Berths</b>	7
<b>Engine(s)</b>	1 x Volvo Penta D1-30B diesel	<b>Hp/Kw</b>	29.00 (hp), 21.34 (kw)
<b>Asking price</b>	sold (VAT )	<b>Lying</b>	at sales office

## CONTACT

<b>Sales office</b>	De Valk Monnickendam B.V.	<b>Telephone</b>	+31 (0)299 65 63 50
<b>Address</b>	Hoogedijk 6 1145 PM Katwoude NL	<b>E-mail</b>	monnickendam@devalk.nl

## DISCLAIMER

These particulars are given in good faith as supplied but cannot be guaranteed.



# DUFOUR 365 GRAND LARGE

## GENERAL

<b>Model</b>	DUFOUR 365 GRAND LARGE
<b>Type</b>	sailing yacht
<b>LOA (m)</b>	10,81
<b>LWL (m)</b>	9,26
<b>Beam (m)</b>	3,65
<b>Draft (m)</b>	1,90
<b>Headroom (m)</b>	1,90
<b>Year built</b>	2007
<b>Builder</b>	Dufour Yachts, Perigny Cedex
<b>Country</b>	France
<b>Designer</b>	Umberto Felci / Patrick Roséo
<b>Displacement (t)</b>	6,26
<b>Ballast (tonnes)</b>	cast iron 1,74
<b>CE norm</b>	A
<b>Hull material</b>	GRP
<b>Hull colour</b>	blue
<b>Hull shape</b>	round-bilged
<b>Keel type</b>	bulb keel
<b>Superstructure material</b>	GRP
<b>Rubbing strake</b>	stainless steel
<b>Deck material</b>	GRP
<b>Deck finish</b>	teak
<b>Superstructure deck finish</b>	non-skid moulded in
<b>Cockpit deck finish</b>	teak
<b>Antifouling (year)</b>	April 2022
<b>Window frame</b>	aluminium
<b>Window material</b>	polycarbonate
<b>Deckhatch</b>	Lewmar; 2 x large, 2 x small
<b>Fuel tank (litre)</b>	polyethylene - ca. 90 L.
<b>Level indicator (fuel tank)</b>	VDO



# DUFOUR 365 GRAND LARGE

<b>Freshwater tank (litre)</b>	polyethylene - Ca. 265 L.
<b>Blackwater tank (litre)</b>	polyethylene - Ca. 55 L.
<b>Wheel steering</b>	mechanical - Lewmar, foldable / vouwbaar / Klappbar
<b>Emergency tiller</b>	yes
<b>More info on paintwork</b>	Hull spray-painted with AWL Grip
<b>Extra info</b>	Steering wheel cover

## ACCOMMODATION

<b>Cabins</b>	3
<b>Berths</b>	7
<b>Interior</b>	mahogany Moabi
<b>Floor</b>	teak and holly
<b>Headroom saloon (m)</b>	1,90 in the middle of the saloon - at the side 1,88
<b>Heating</b>	diesel ducted hot air Webasto Air Top
<b>Chart table</b>	yes
<b>Galley</b>	yes
<b>Countertop</b>	plastic
<b>Sink</b>	stainless steel 2 x
<b>Cooker</b>	calor gas Eno, 2 burner
<b>Oven</b>	yes
<b>Freezer</b>	toploader Isotherm Compact
<b>Hot water system</b>	220V Quick BX-20
<b>Water pressure system</b>	electrical
<b>Coffee maker</b>	Nespresso
<b>Crockery</b>	Original Dufour Yachts
<b>Owners cabin</b>	double bed
<b>Bed length (m)</b>	front-to-rear width: 1,35 - 0,80 / length: 1,95
<b>Wardrobe</b>	drawers and shelves
<b>Bathroom</b>	shared
<b>Toilet</b>	shared
<b>Toilet system</b>	manual Jabsco



# DUFOUR 365 GRAND LARGE

<b>Wash basin</b>	in the bathroom
<b>Shower</b>	shared
<b>Extra info</b>	Neptune mattress + slatted base in owners cabin
<b>Guest cabin 1</b>	double bed
<b>Bed length (m)</b>	front-to-rear width: 1,45 - 0,90 / length: 1,95
<b>Wardrobe</b>	drawers and shelves
<b>Guest cabin 2</b>	double bed
<b>Bed length (m)</b>	front-to-rear width: 1,45 - 0,90 / length: 1,95
<b>Wardrobe</b>	drawers and shelves

## MACHINERY

<b>No of engines</b>	1
<b>Make</b>	Volvo Penta
<b>Type</b>	D1-30B
<b>HP</b>	29
<b>kW</b>	21.34
<b>Fuel</b>	diesel
<b>Year installed</b>	2007
<b>Engine cooling system</b>	freshwater heat exchanger
<b>Drive</b>	sail-drive
<b>Saildrive seal</b>	new in October 2020
<b>Engine controls</b>	mechanical
<b>Bowthruster</b>	electric - Side Power Vetus 55 KGF new/nieuw/neu in 2018
<b>Exhaust</b>	watercooled
<b>Propeller type</b>	folding
<b>Propeller blades</b>	2
<b>Manual bilge pump</b>	yes
<b>Electric bilge pump</b>	yes
<b>Electrical installation</b>	220/12v
<b>Start battery</b>	1x AGM 70 amp - new April 2020
<b>Service battery</b>	2 x Victron AGM Gel 12V/80Ah



# DUFOUR 365 GRAND LARGE

<b>Bowthruster battery</b>	1 x new in 2018
<b>Battery monitor</b>	Mastervolt
<b>Battery charger/inverter</b>	Mastervolt Mass Combi12-2000-100
<b>Shorepower</b>	with cable
<b>Extra info</b>	Annual engine maintenance by service company. Feb. 2022 engine + waterpump serviced, impellor, valve adjustment, filters, etc.
<b>Extra info</b>	DE-BUG Diesel Decontamination; installed in 2007 - system prevents contaminated diesel

## NAVIGATION

<b>Compass</b>	Plastimo on steering console
<b>Depth sounder/log</b>	Raymarine ST60+ Tridata
<b>Windset</b>	Raymarine ST60+ Wind
<b>Repeater</b>	Raymarine ST60+ Graphic
<b>VHF</b>	Raymarine RAY54E
<b>VHF handheld</b>	Icom BC-166
<b>Autopilot</b>	Raymarine ST6002
<b>Radar</b>	Radar must be checked
<b>GPS</b>	Geonav 4 Gipsy handheld GPS/Plotter
<b>Radar/GPS/plotter</b>	Raymarine C70 combi plotter / radar
<b>Navtex</b>	Furuno Navtex NX-300
<b>Electronic chart(s)</b>	Navionics Gold Card XL3 - 25G (UK South - Germany)
<b>AIS receiver</b>	yes
<b>AIS transponder</b>	Raymarine AIS650 with Easysplit antenne splitter for AIS transponder - new in Sept. 2012
<b>Navigation lights</b>	Tricolor + anchor light

## EQUIPMENT

<b>Sprayhood with grab rail</b>	new in 2018
<b>Cockpit cushions</b>	yes
<b>Cockpit table</b>	with cockpit table cover



# DUFOUR 365 GRAND LARGE

Bathing platform	integrated in hull
Boarding ladder	stainless steel
Deck shower	No
Anchor	Bruce
Anchor chain	yes
Windlass	electrical - Quick
Outboard support	yes
Sea railing	wire
Grab rail (superstructure)	teak
Pushpit	yes
Pulpit	yes
Life raft	valise (or bag)
Life raft (pers)	Arimar Neptune - 6 pax.
Last life raft survey	Survey is Expired in 2020
Lifebuoy	yes
Fenders	yes
Mooring lines	yes
Radio	Fusion MS-RA55 - new 2019
Speakers in salon	VDO
Clock - barometer	yes
Fire extinguisher	yes
Extra info	Windlass is equipped with remote control

## RIGGING

Rigging	sloop
Standing rigging	wire 2007
Brand mast	Sparcraft
Material mast	aluminium
Spreaders	2 sets
Mainsail cover	Lazy-bag + lazy-jacks
Battcars	Rudgerson 1530 system (2013)



# DUFOUR 365 GRAND LARGE

<b>Fully battened mainsail</b>	North Sails Soft Norlam (2013)
<b>Genoa</b>	135 % North Sails Soft Norlam ( new 2012 )
<b>Genoa furler</b>	Facnor
<b>Gennaker</b>	Ca. 50m2 not used much
<b>Backstay adjuster</b>	mechanical
<b>Boomvang</b>	gasspring & talie
<b>Primary sheet winch</b>	electric for mainsail ; 1x Uni Power ST900 (new/nieuw/neu 2015)
<b>Genoa sheetwinches</b>	2x Harken ST46
<b>Halyard winches</b>	1x Harken ST40 2 speed
<b>Winchcovers</b>	yes
<b>Gennaker pole</b>	yes





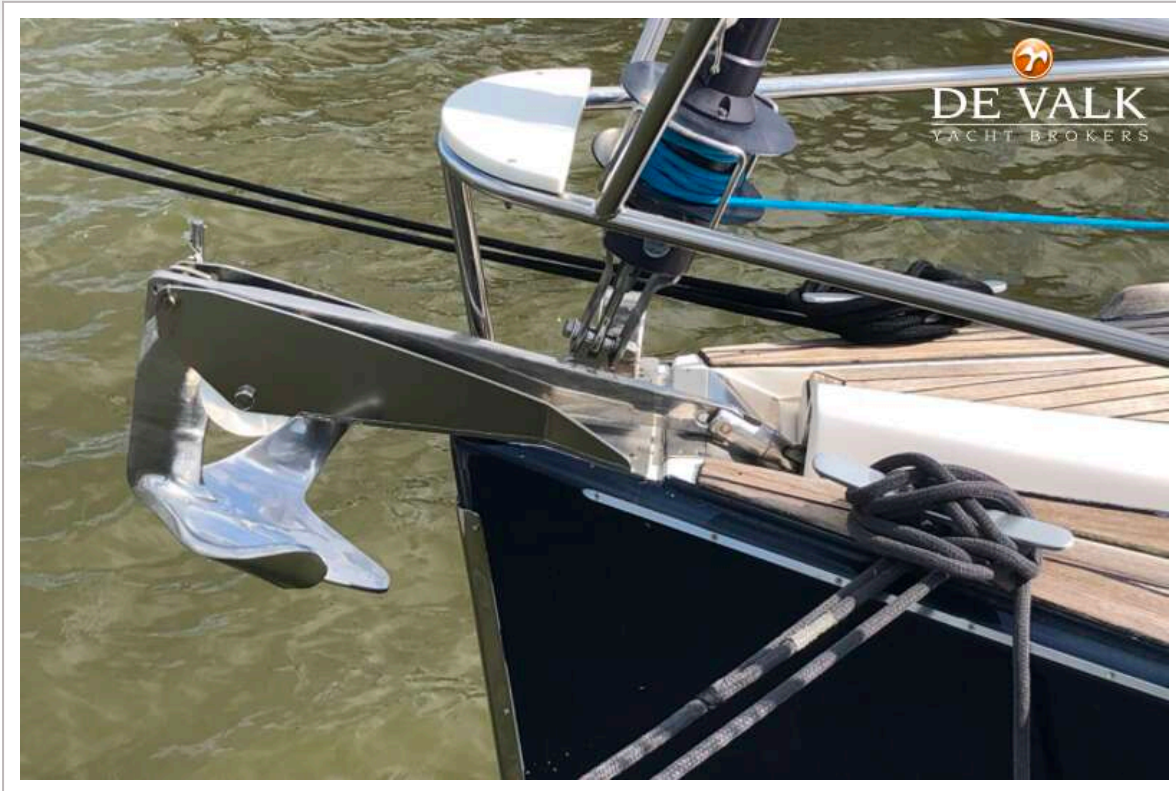
# DUFOUR 365 GRAND LARGE



# DUFOUR 365 GRAND LARGE



# DUFOUR 365 GRAND LARGE



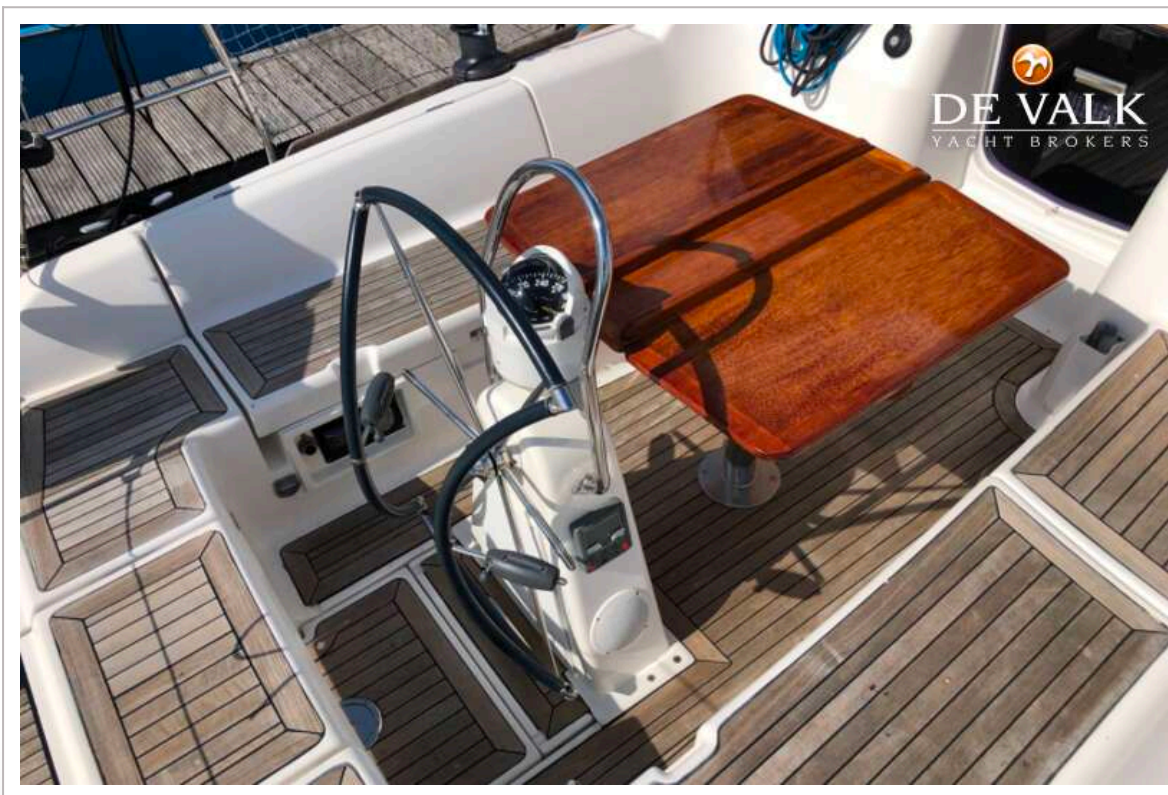
# DUFOUR 365 GRAND LARGE



# DUFOUR 365 GRAND LARGE



# DUFOUR 365 GRAND LARGE



# DUFOUR 365 GRAND LARGE

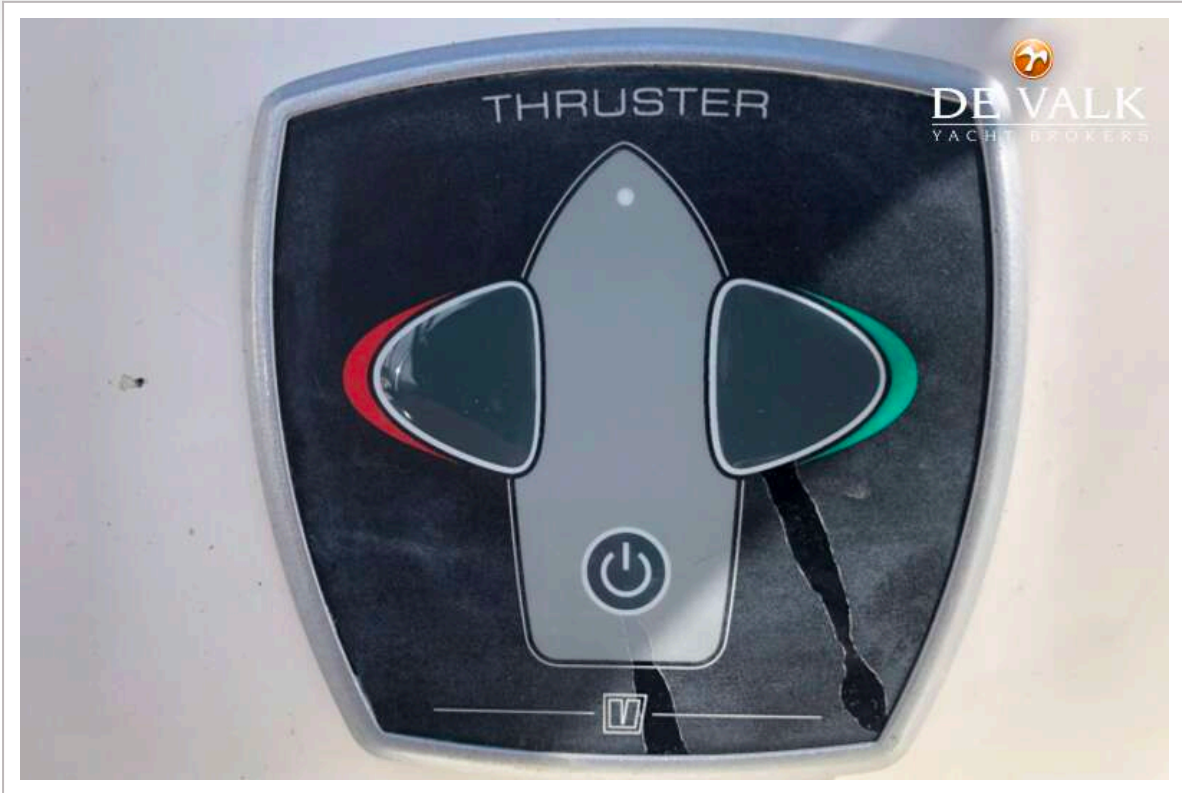


# DUFOUR 365 GRAND LARGE





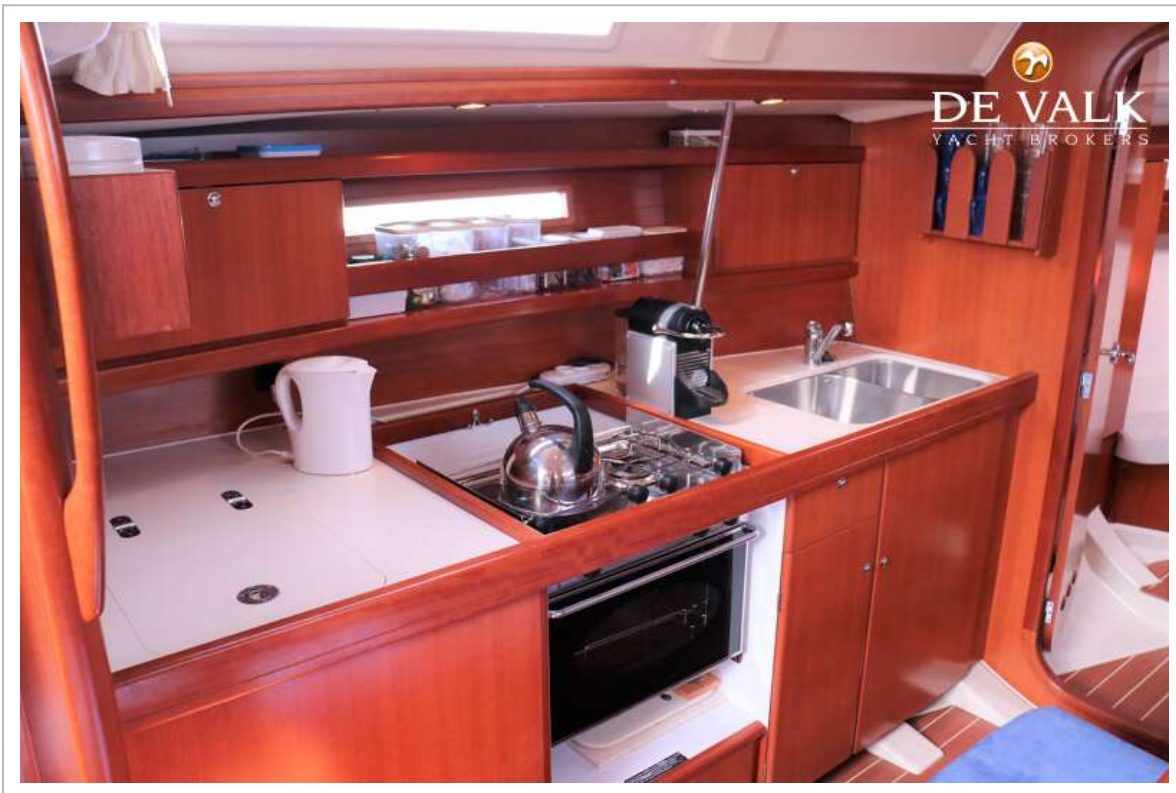
# DUFOUR 365 GRAND LARGE



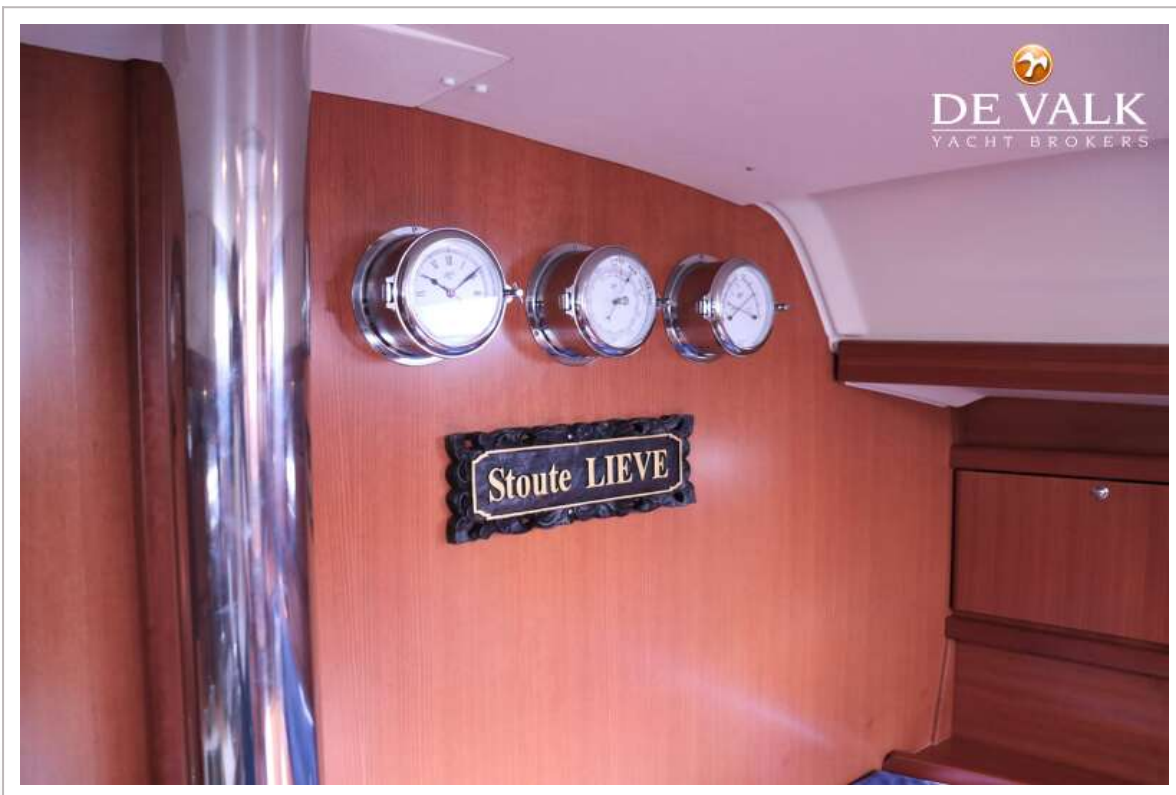
# DUFOUR 365 GRAND LARGE



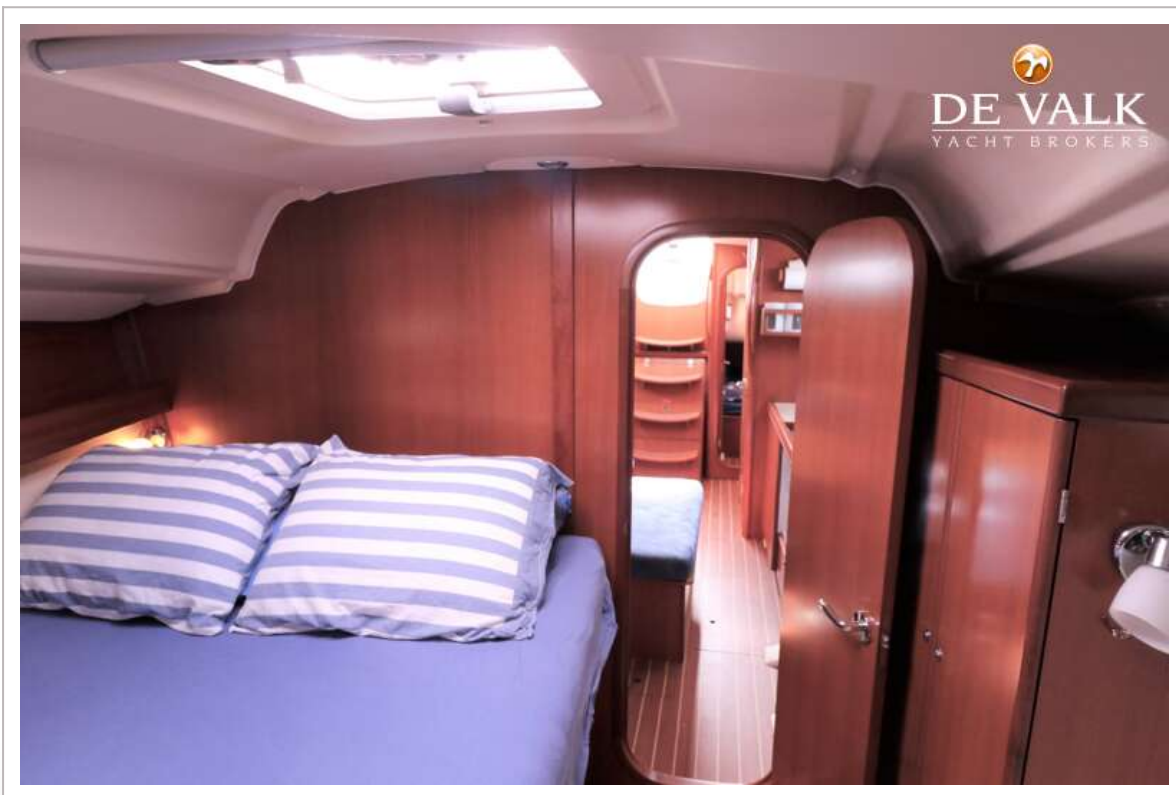
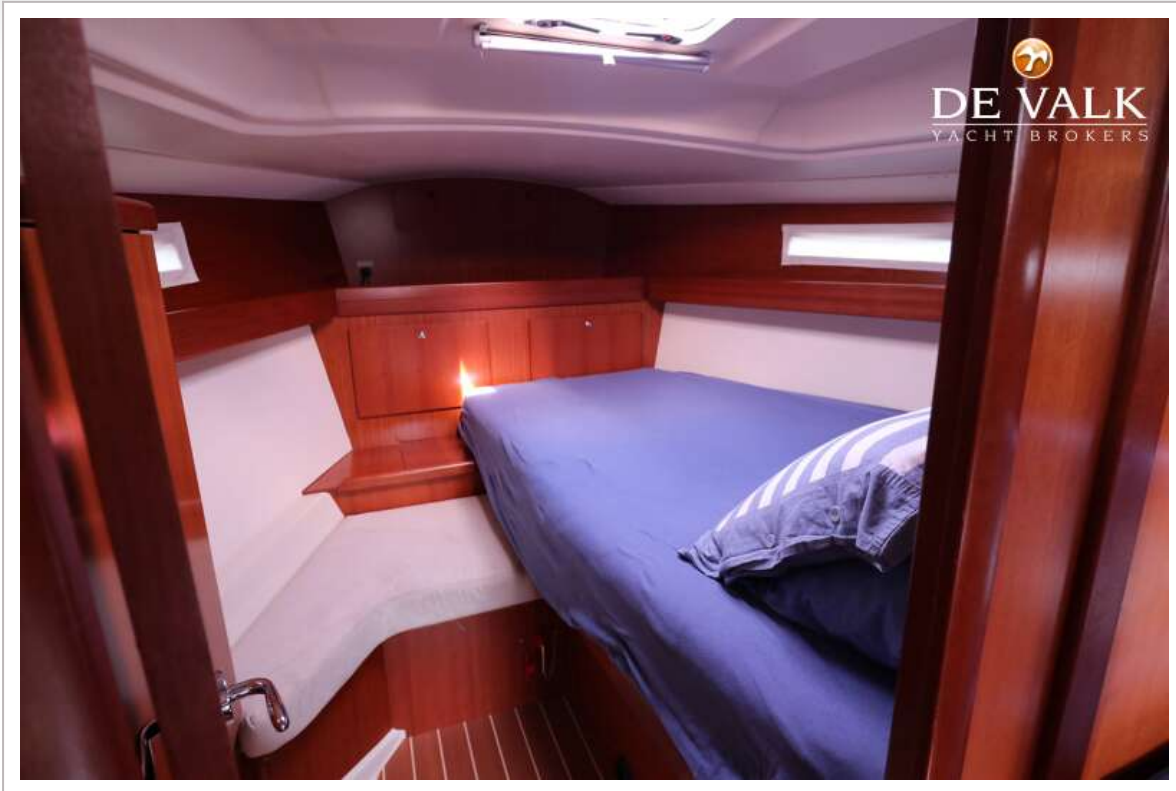
# DUFOUR 365 GRAND LARGE



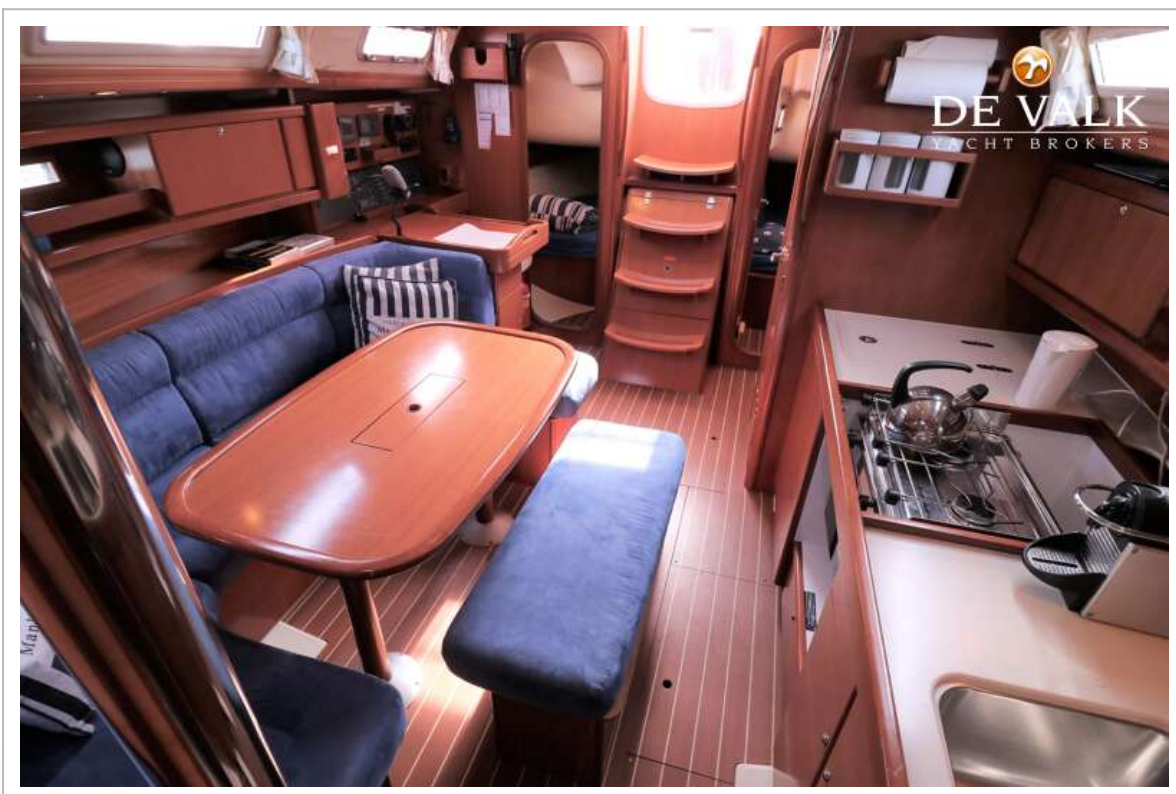
# DUFOUR 365 GRAND LARGE



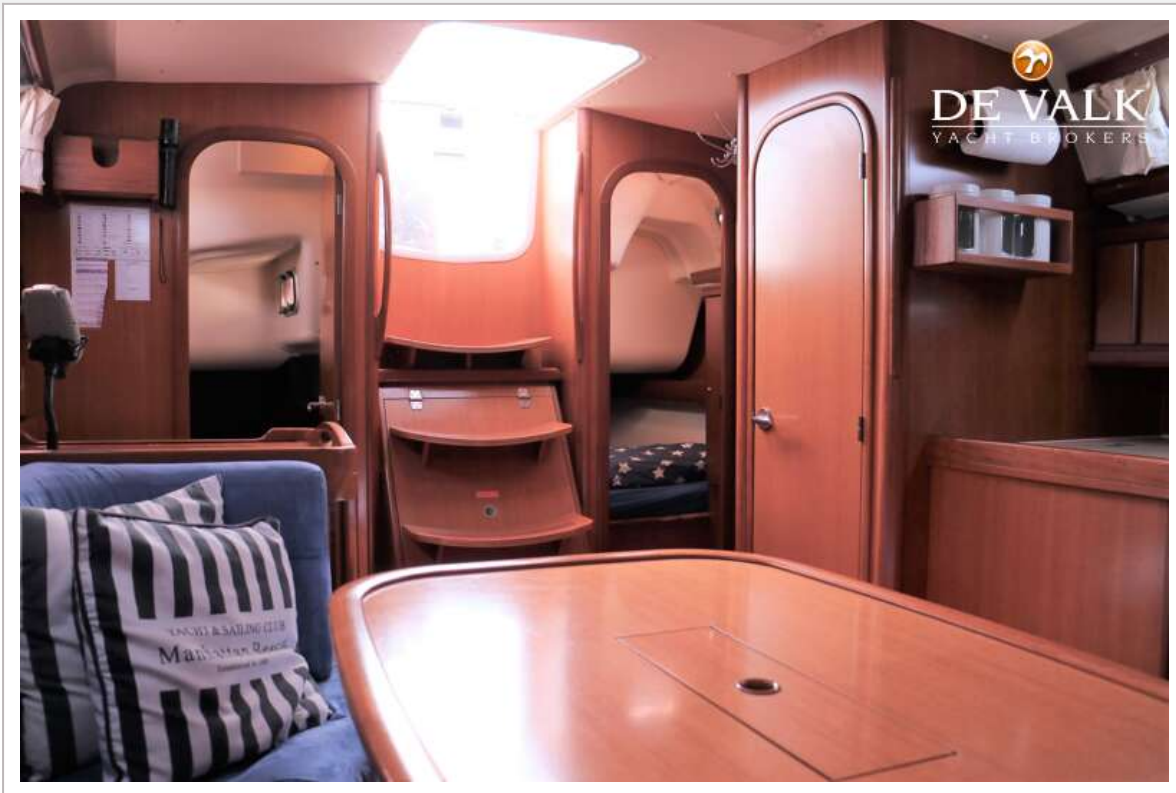
# DUFOUR 365 GRAND LARGE



# DUFOUR 365 GRAND LARGE



# DUFOUR 365 GRAND LARGE

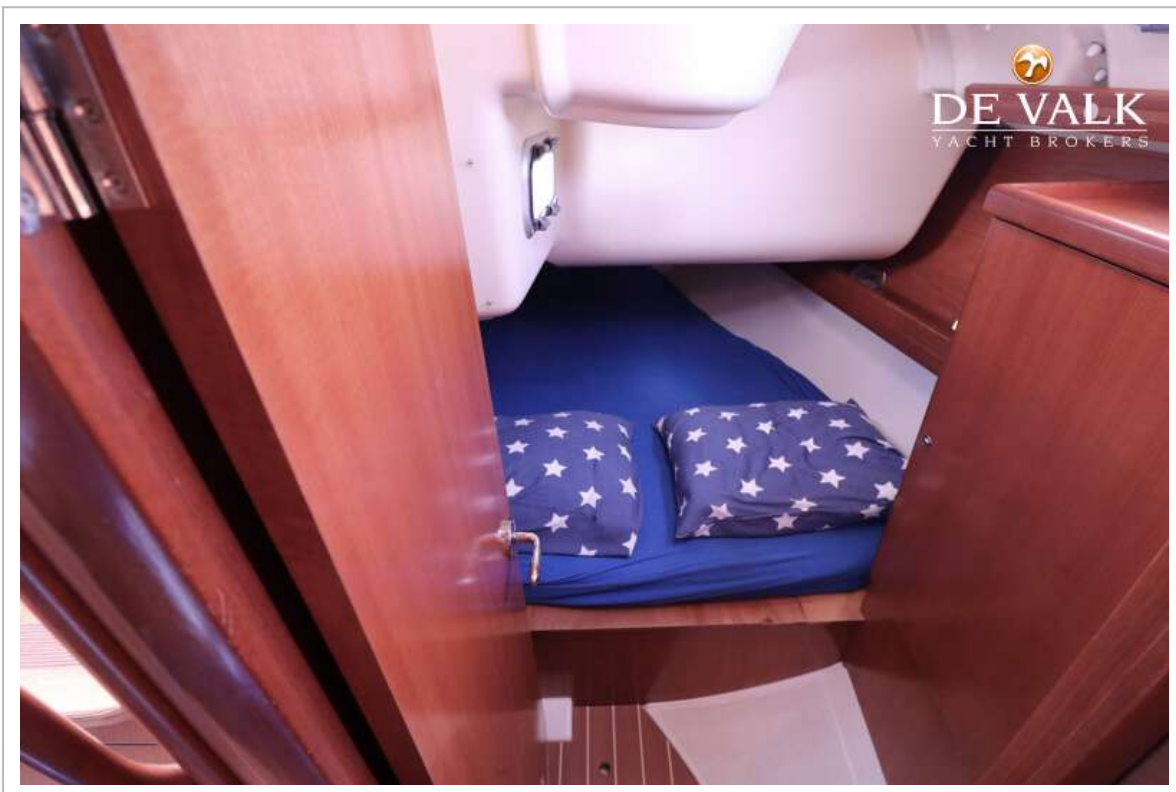
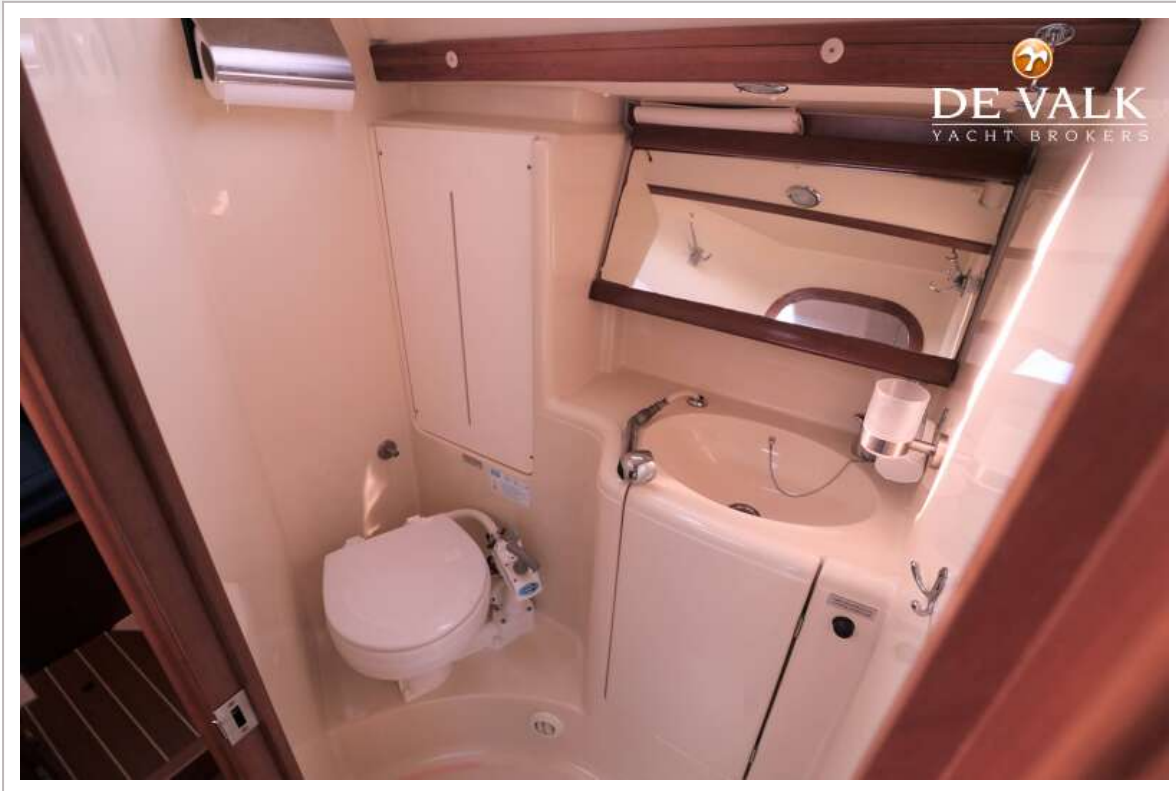


# DUFOUR 365 GRAND LARGE

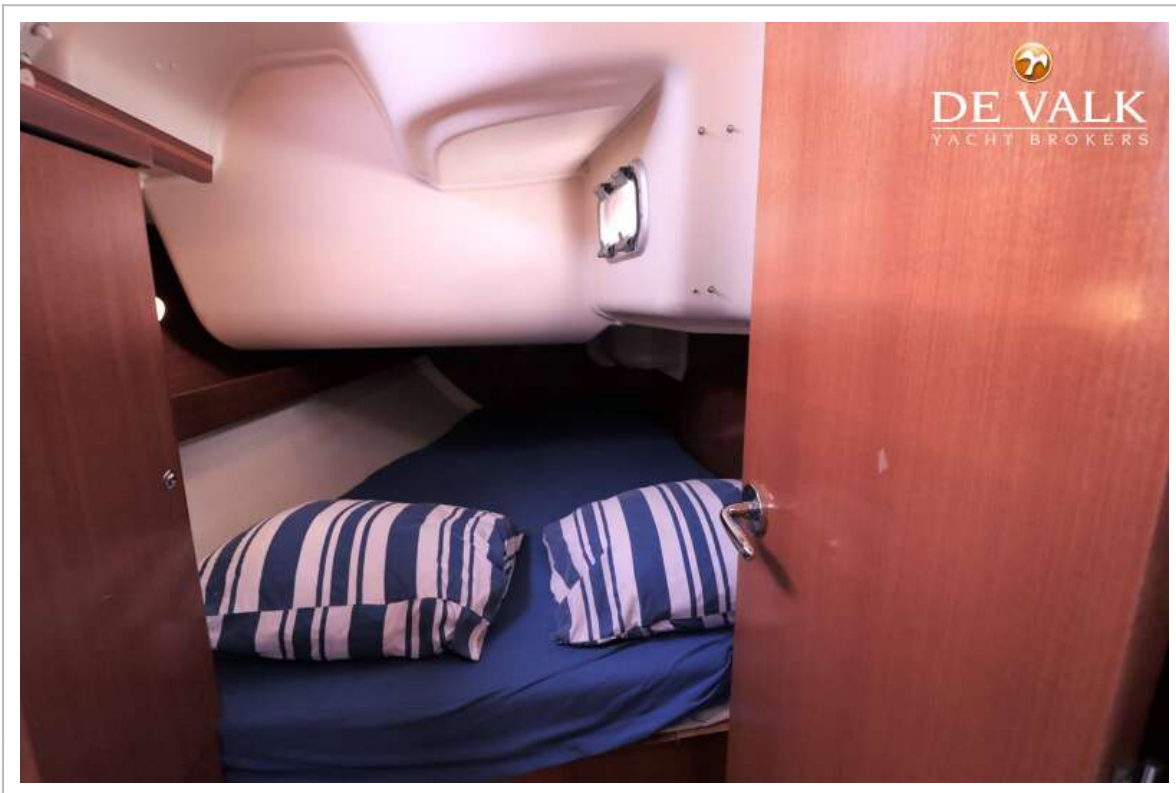
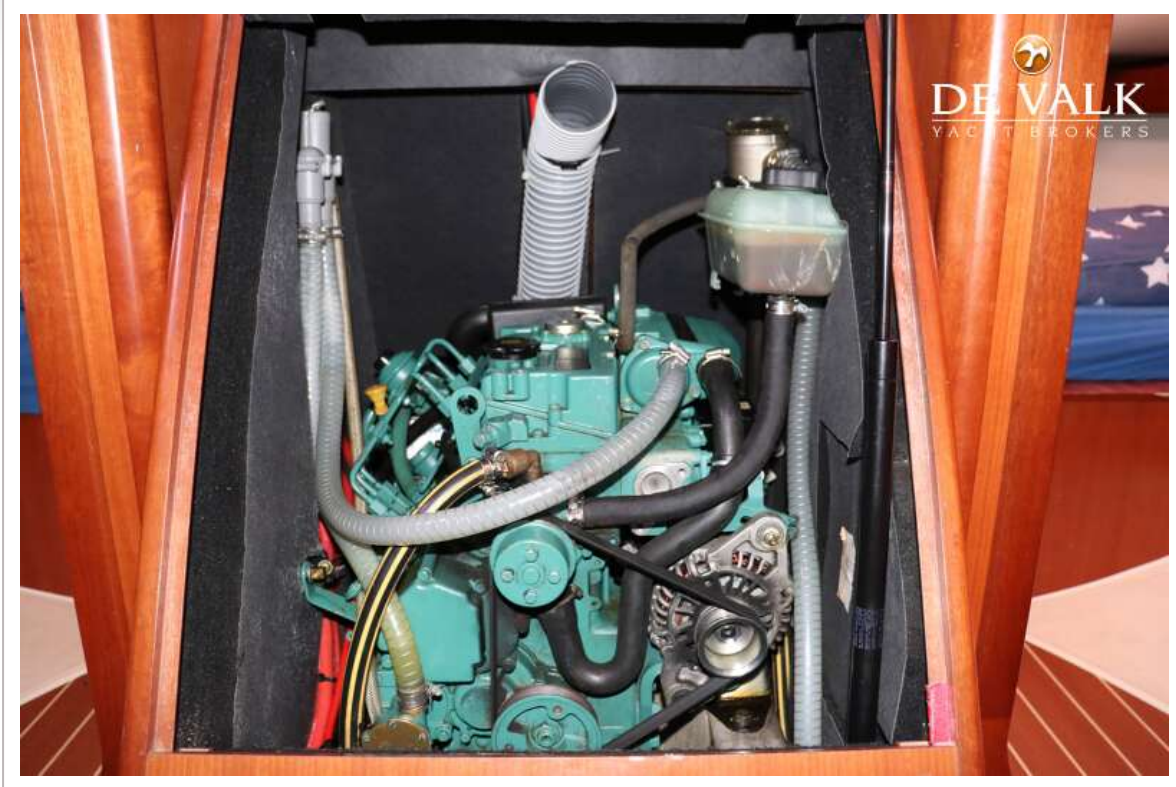




# DUFOUR 365 GRAND LARGE



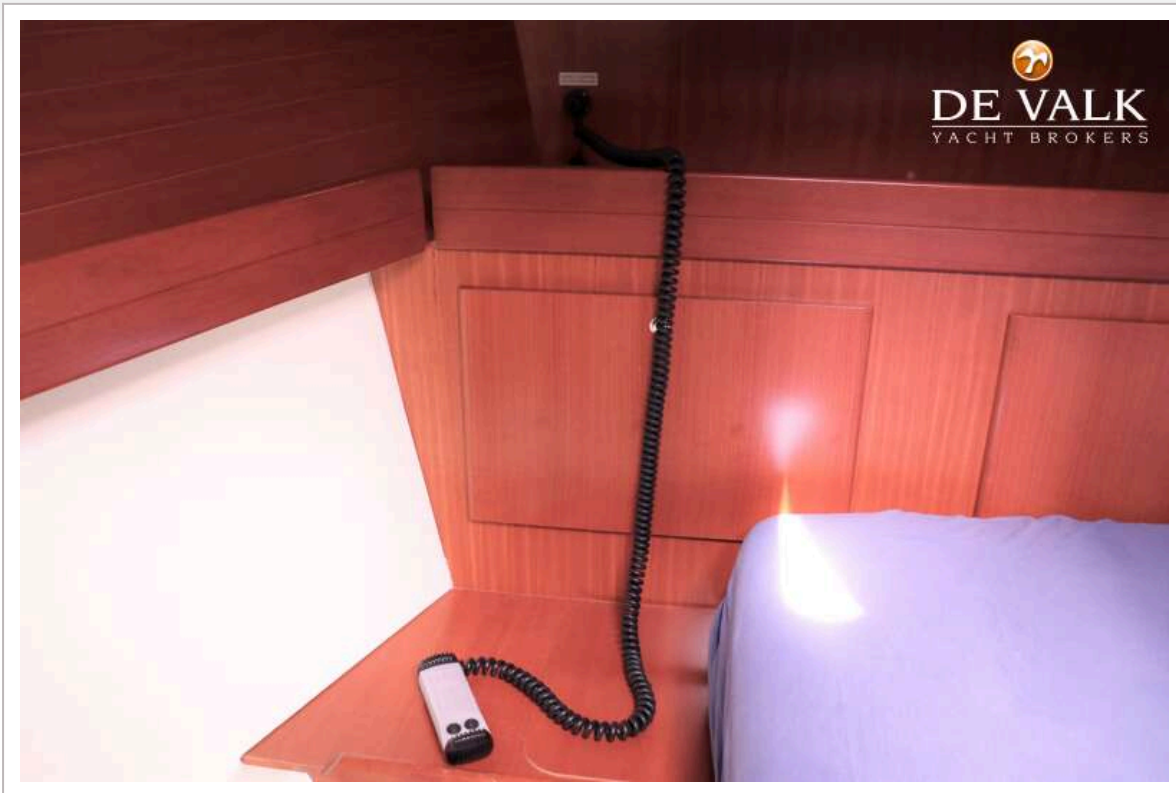
# DUFOUR 365 GRAND LARGE



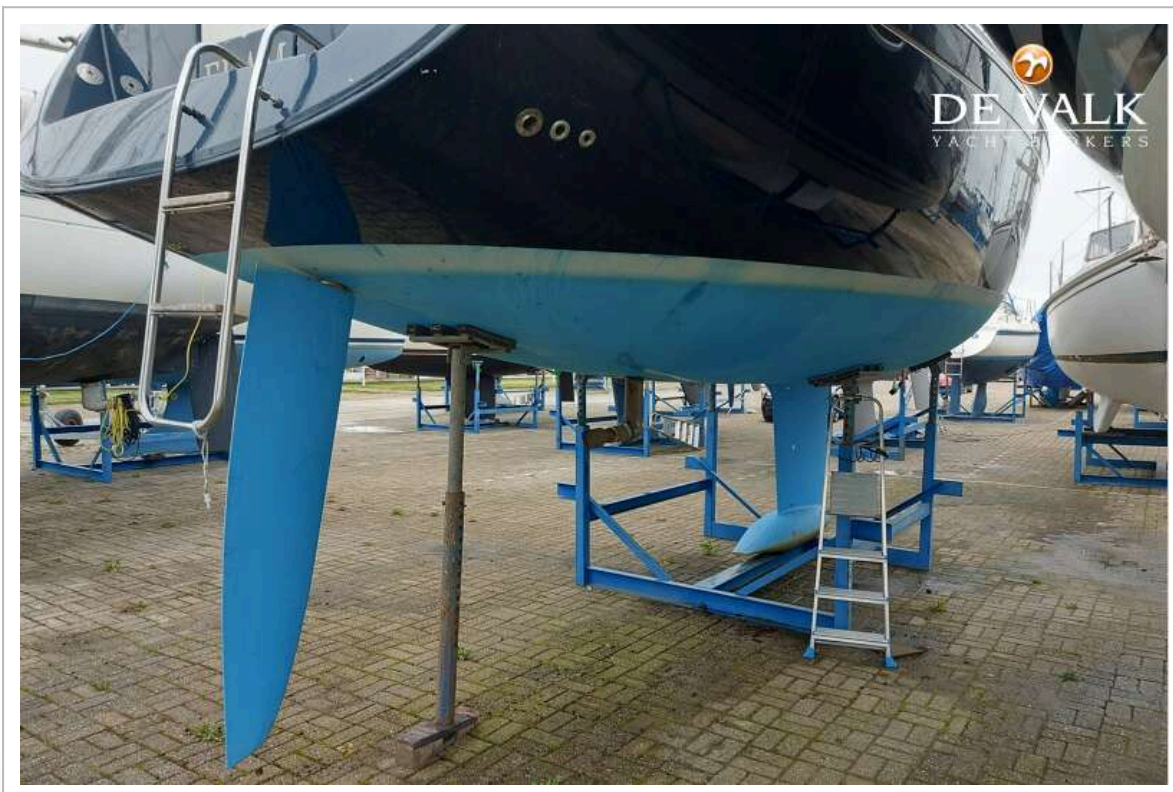
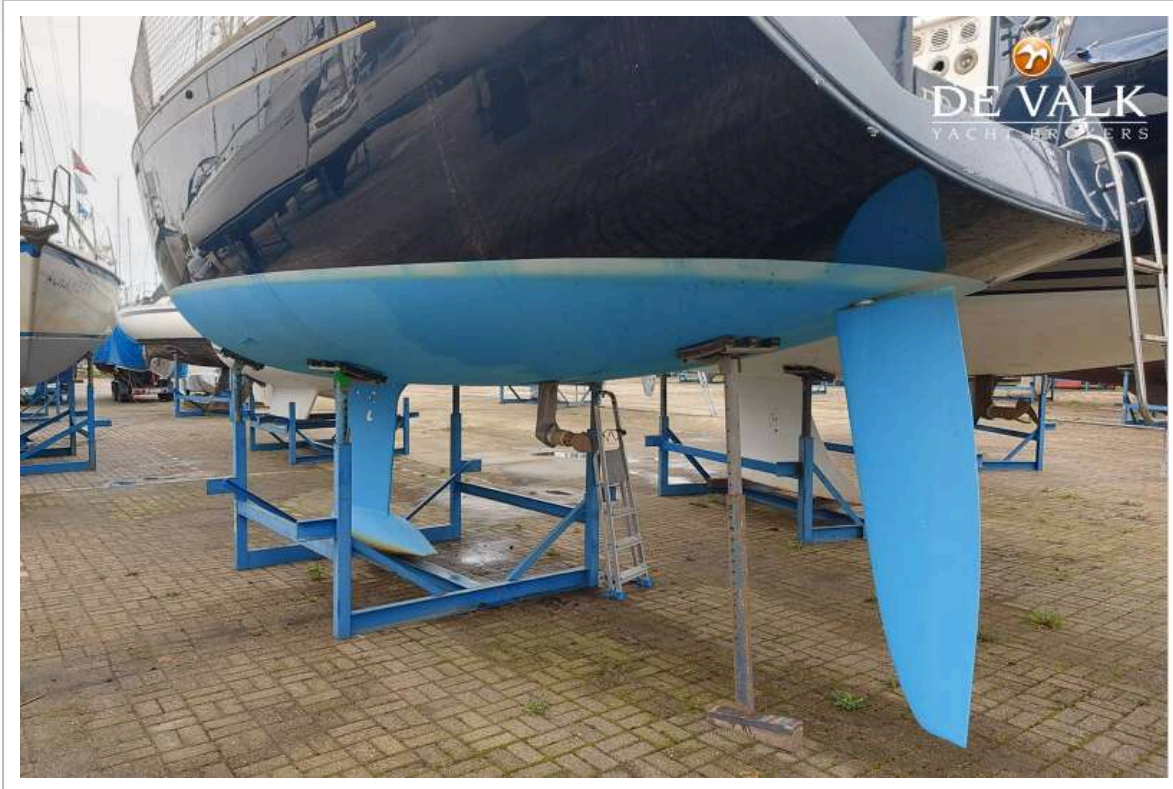
# DUFOUR 365 GRAND LARGE



# DUFOUR 365 GRAND LARGE



# DUFOUR 365 GRAND LARGE



# DUFOUR 365 GRAND LARGE

