



DE VALK
YACHT BROKERS



BAVARIA 38 CRUISER



DE VALK
YACHT BROKERS

BAVARIA 38 CRUISER

BROKER'S COMMENTS

The Bavaria 38 Cruiser in the two cabin version has a very spacious layout and offers plenty of comfort. This example has an extensive list of equipment that will make life on board much more enjoyable. She is a two owner boat, never chartered and has only been used in the Netherlands. Come and see this Bavaria 38 Cruiser at De Valk Zeeland.

Nick Lanting

SPECIFICATIONS

Dimensions	11.72 x 3.90 x 1.60 (m)	Builder	Bavaria Yachtbau GmbH
Built	2008	Cabins	2
Material	GRP	Berths	6
Engine(s)	1 x Volvo Penta D1-30 diesel	Hp/Kw	29.00 (hp), 21.34 (kw)
Asking price	sold (VAT)	Lying	at sales office

CONTACT

Sales office	De Valk Sint Annaland B.V.	Telephone	+31 (0)166 601 000
Address	Koelhuisweg 4 4697 RM Sint Annaland NL	E-mail	sintannaland@devalk.nl

DISCLAIMER

These particulars are given in good faith as supplied but cannot be guaranteed.



BAVARIA 38 CRUISER

GENERAL

Model	BAVARIA 38 CRUISER
Type	sailing yacht
LOA (m)	11,72
LWL (m)	9,90
Beam (m)	3,90
Draft (m)	1,60
Air draft (m)	17,50
Headroom (m)	1,89
Year built	2008
Builder	Bavaria Yachtbau GmbH
Country	Germany
Designer	J&J Design
Displacement (t)	7,2
Ballast (tonnes)	cast iron 2,1
CE norm	A
Hull material	GRP
Hull colour	white With dark blue striping and waterline
Hull shape	round-bilged
Keel type	tandem keel
Superstructure material	GRP
Rubbing strake	aluminum
Deck material	GRP
Deck finish	teak
Superstructure deck finish	teak
Cockpit deck finish	teak
Antifouling (year)	03/2021
Dorades	2 x with stainless steel protection bracket
Window frame	aluminium
Window material	polycarbonate
Deckhatch	Lewmar with blinds



BAVARIA 38 CRUISER

Portholes	aluminium
Insulation	yes
Fuel tank (litre)	polyethylene 150
Level indicator (fuel tank)	yes
Freshwater tank (litre)	polyethylene 1 x 210 & 1x 150
Level indicator (freshwater)	yes
Blackwater tank (litre)	polyethylene 80
Blackwater tank extraction	deck extraction + uw line
Wheel steering	mechanical Lewmar pedestal with leather covered stainless wheel
Emergency tiller	yes
More info on paintwork	Hull polished and waxed 03/2021
Extra info	6 x aluminium clamp (so also amidships)
Extra info	Hull length is 11.45 m.

ACCOMMODATION

Cabins	2
Berths	6
Interior	mahogany
Floor	woodprint Teak and holly look-a-like
Saloon	yes
Headroom saloon (m)	1,89
Heating	diesel ducted hot air Webasto
Chart table	On starboard side next to the entrance
Aft Cabin	1 x
Dinette	yes
Galley	On port side next to the entrance
Countertop	plastic (white with black/grey dots)
Sink	stainless steel 2 x
Cooker	calor gas 2 burner
Oven	yes



BAVARIA 38 CRUISER

Microwave	Stainless steel Siemens Inno-Wave (incl. Grill)
Fridge	Top loader with a Waeco compressor
Hot water system	220V + engine QL, 40 liter calorifier
Water pressure system	electrical Jabsco Flow 5.0 water pump
Owners cabin	double bed Forward, headroom : 1,88 m
Bed length (m)	2,05 x 1,70
Wardrobe	hanging/drawers/shelves
Bathroom	shared
Toilet	In bathroom
Toilet system	electric Vetus
Wash basin	in the bathroom
Shower	In bathroom
Guest cabin 1	double bed Aft, headroom 1.87 m
Bed length (m)	2,05 x 1,30
Wardrobe	hanging and shelves
Extra info	Interior lights with LED bulbs

MACHINERY

No of engines	1
Make	Volvo Penta
Type	D1-30
HP	29
kW	21.34
Fuel	diesel
Year installed	2008
Engine hours	1100
Engine cooling system	freshwater heat exchanger
Drive	sail-drive
Saildrive seal	10/2018
Engine controls	bowden cable New controls + cables 06/2023
Bowthruster	electric Vetus 75 KgF



BAVARIA 38 CRUISER

Exhaust	watercooled
Propeller type	folding 04/2010
Propeller blades	3
Manual bilge pump	yes
Electric bilge pump	yes
Electrical installation	12 & 220 Volt
Start battery	1 x Mastervolt
Service battery	2 x 165 Ah Free Line Maintenance Free
Bowthruster battery	1 x 120 Ah Vetus
Battery monitor	Mastervolt Mass Inverter Control
Battery charger/inverter	Mastervolt Mass Combi 12/1200/60
Diode battery combiners	yes
Shorepower	with cable
Insulation transformer	Mastervolt
Extra info	Delphi fuel filter / water separator
Extra info	3 blade fixed propellor as spare

NAVIGATION

Compass	Plastimo Contest 135 (on pedestal)
Depth sounder/log	Raymarine ST60+ Tridata
Windset	Raymarine ST60+
VHF	Raymarine with extra connection and speaker in the cockpit
Autopilot	Raymarine ST6002
Rudder angle indicator	Via autopilot display
Plotter/GPS	Raymarine C70 (on pedestal)
Electronic chart(s)	1x
Navigation lights	Battery powered top light with remote

EQUIPMENT

Sprayhood	Dark blue
Cockpit cover	yes



BAVARIA 38 CRUISER

Bimini	yes
Cockpit table	Fixed table with folding teak blades
Bathing platform	Electric and covered with teak
Boarding ladder	stainless steel Telescopic
Deck shower	yes
Anchor	Delta
Anchor chain	yes
Windlass	electrical Lewmar
Sea railing	stainless steel Double
Grab rail (superstructure)	stainless steel
Pushpit	Stainless steel
Pulpit	Stainless steel
Life raft	valise (or bag) Arimar
Life raft (pers)	6
Last life raft survey	To be surveyed
Lifebuoy	Yellow
Radar reflector	Tri-lens in mast head
Fenders	yes
Mooring lines	yes
TV	Sharp Aquos
Radio-cd player	JVC
Speakers in salon	2 x
Fire extinguisher	3 x
Latest extinguisher survey	Unknown
Extra info	Fire-blanket
Extra info	Removabke s/s bracket on stern for solar panels

RIGGING

Rigging	fractional 9/10
Standing rigging	wire
Brand mast	Seldén



BAVARIA 38 CRUISER

Material mast	aluminium
Spreaders	2 x set of spreaders
Fully battened mainsail	Elvstrom (2008)
Stoway mast	yes
Genoa	Elvstrom, with grey UV protection strip (2020)
Genoa furler	Furlex 200S
Reefing System	main in-mast furling
Backstay adjuster	tackle
Boomvang	gasspring Rodkicker
Primary sheet winch	2 x Lewmar 40 ST (main sheet)
Genoa sheetwinches	2 x Lewmar 40 ST
Halyard winches	2 x Lewmar 30 ST
Extra info	German main sheet system
Extra info	2 x 3 Rutgerson halyard jammers on both sides of entrance



BAVARIA 38 CRUISER



BAVARIA 38 CRUISER



BAVARIA 38 CRUISER



BAVARIA 38 CRUISER



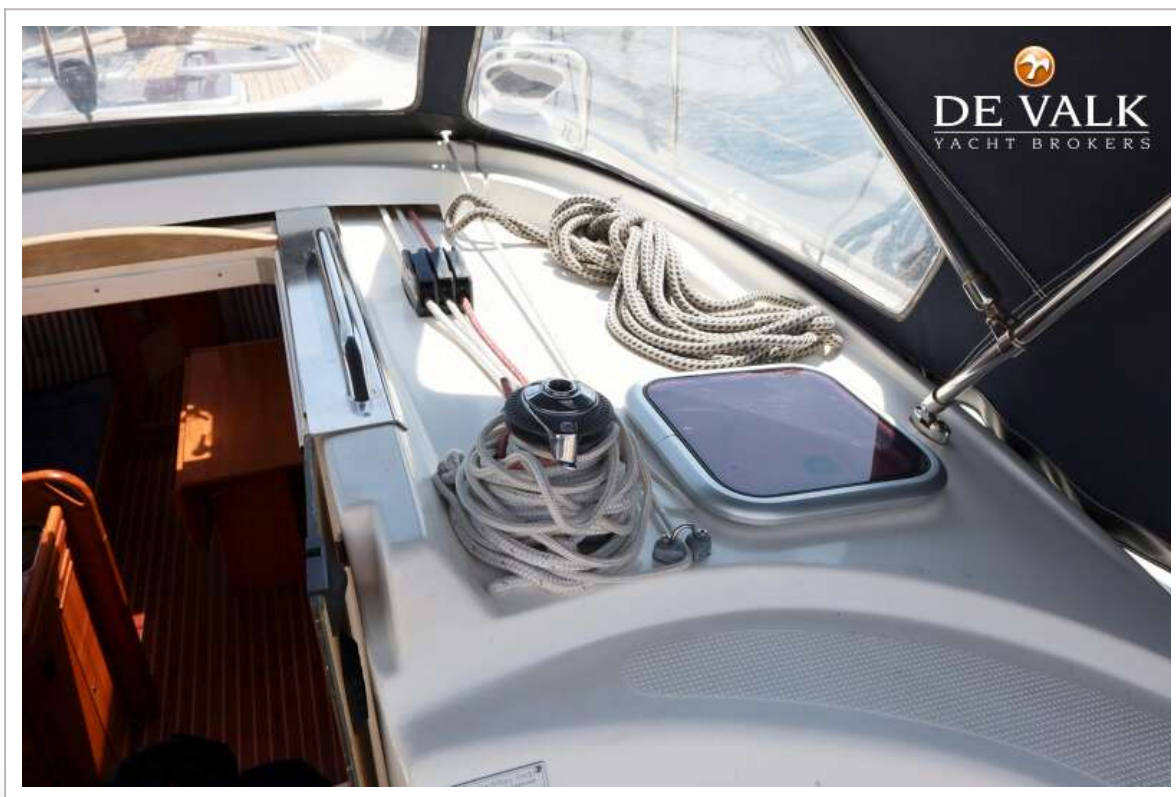
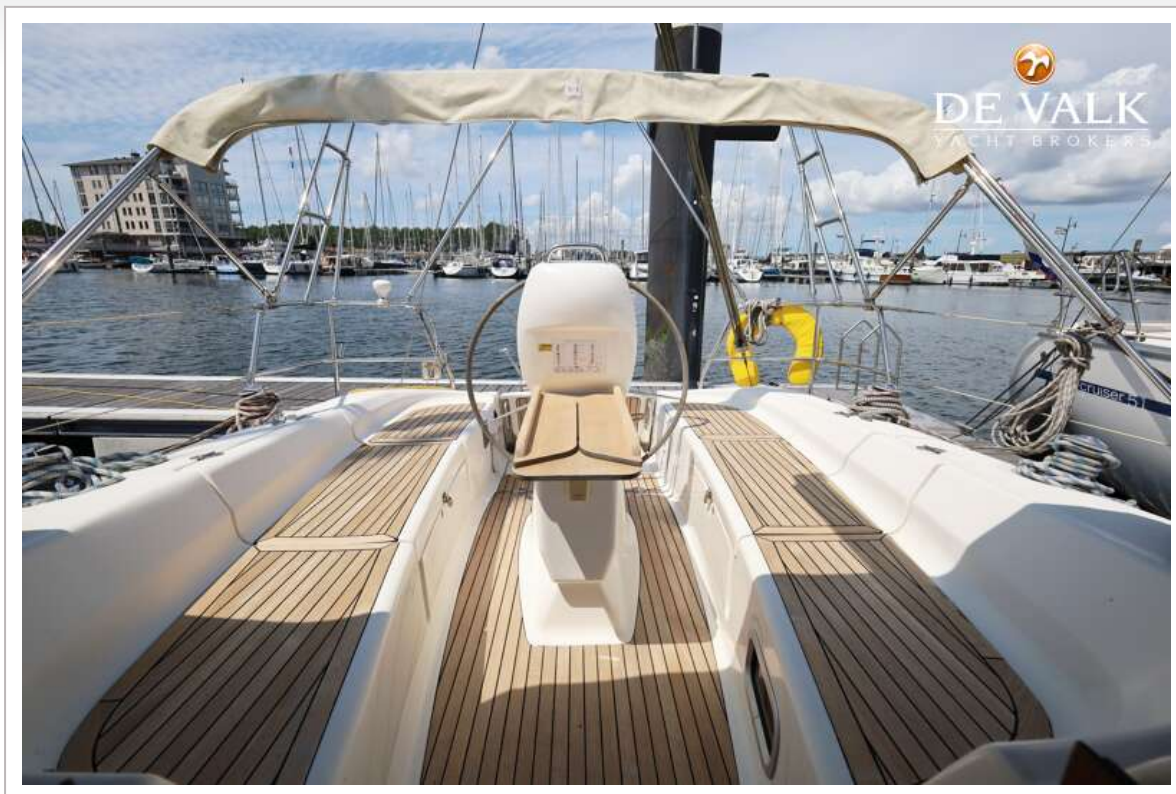
BAVARIA 38 CRUISER



BAVARIA 38 CRUISER



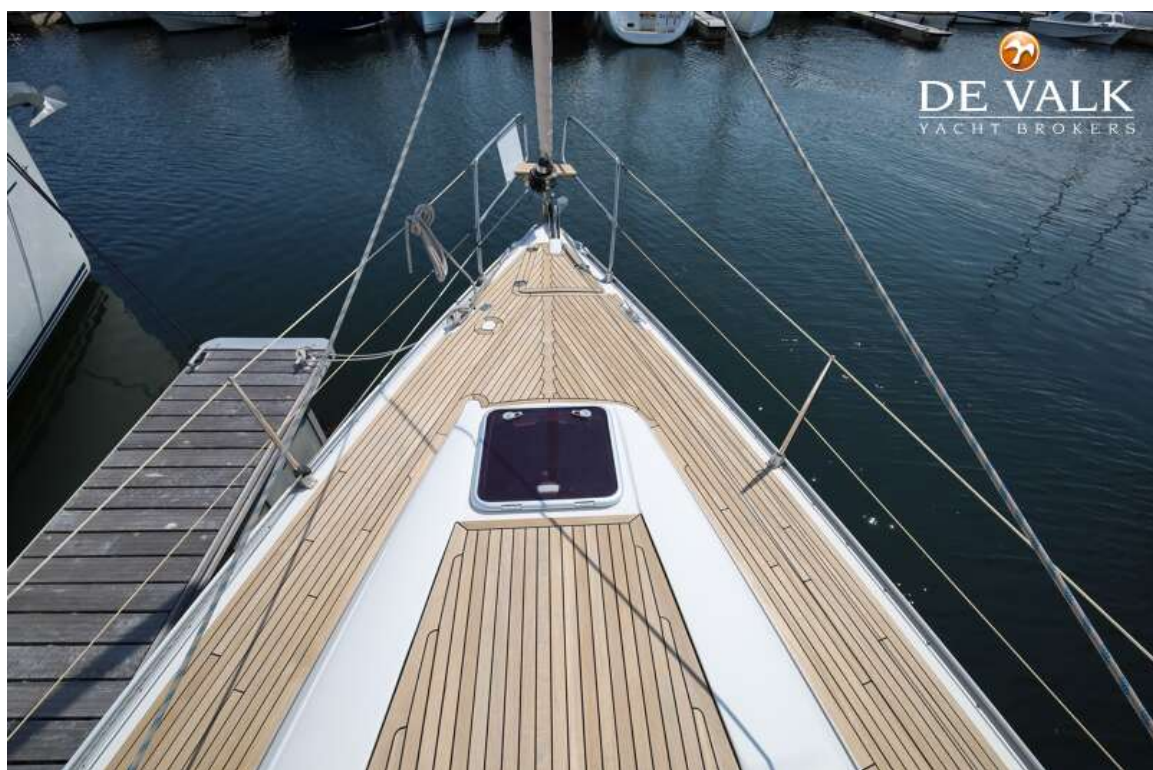
BAVARIA 38 CRUISER



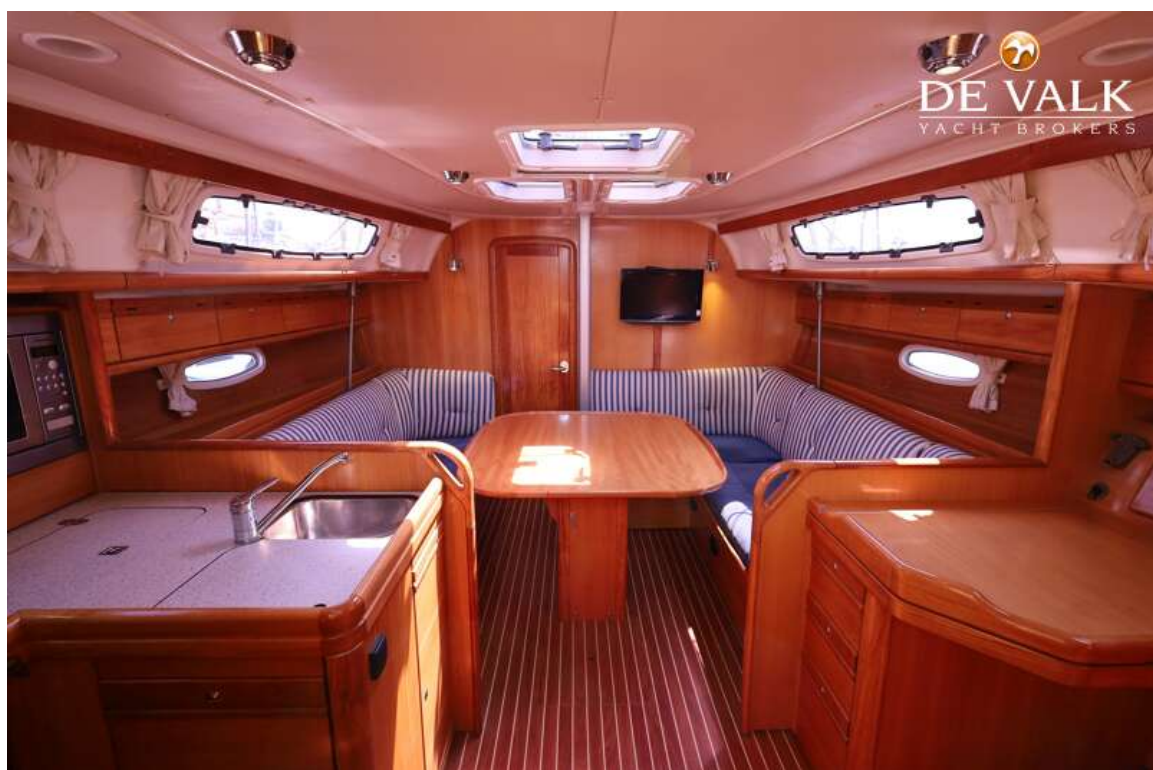
BAVARIA 38 CRUISER



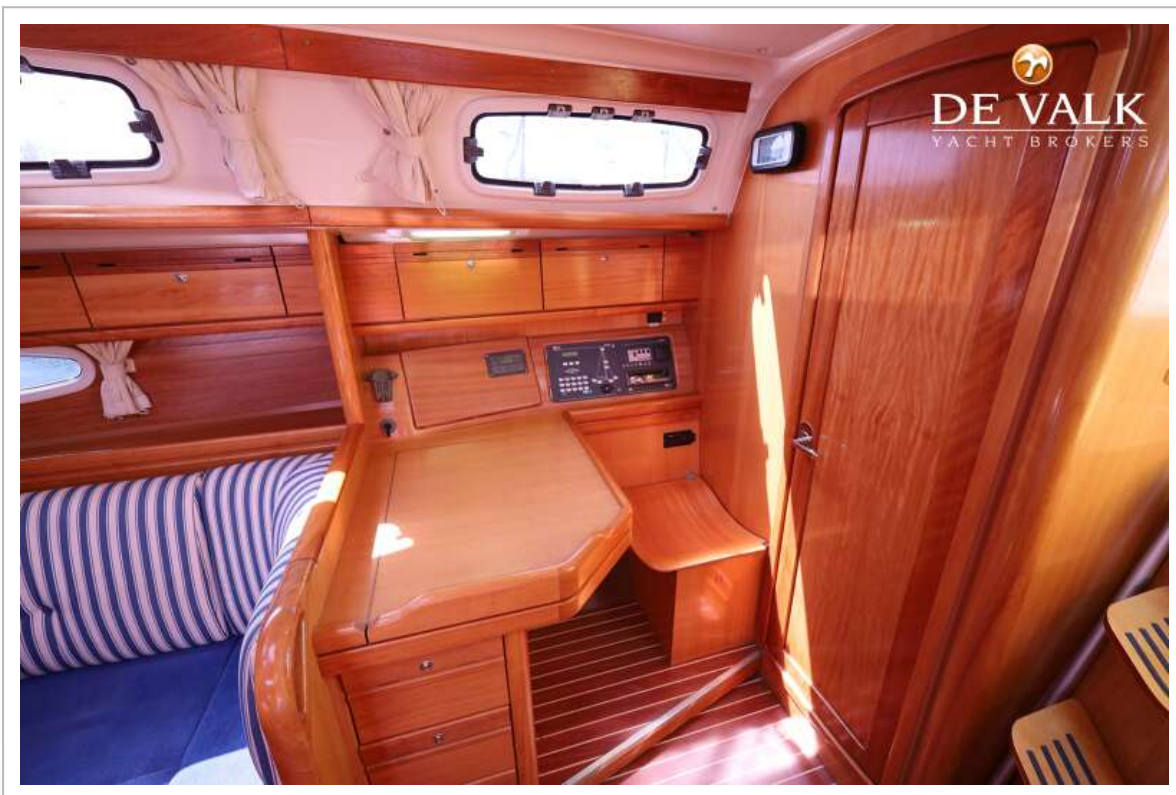
BAVARIA 38 CRUISER



BAVARIA 38 CRUISER



BAVARIA 38 CRUISER



BAVARIA 38 CRUISER



BAVARIA 38 CRUISER



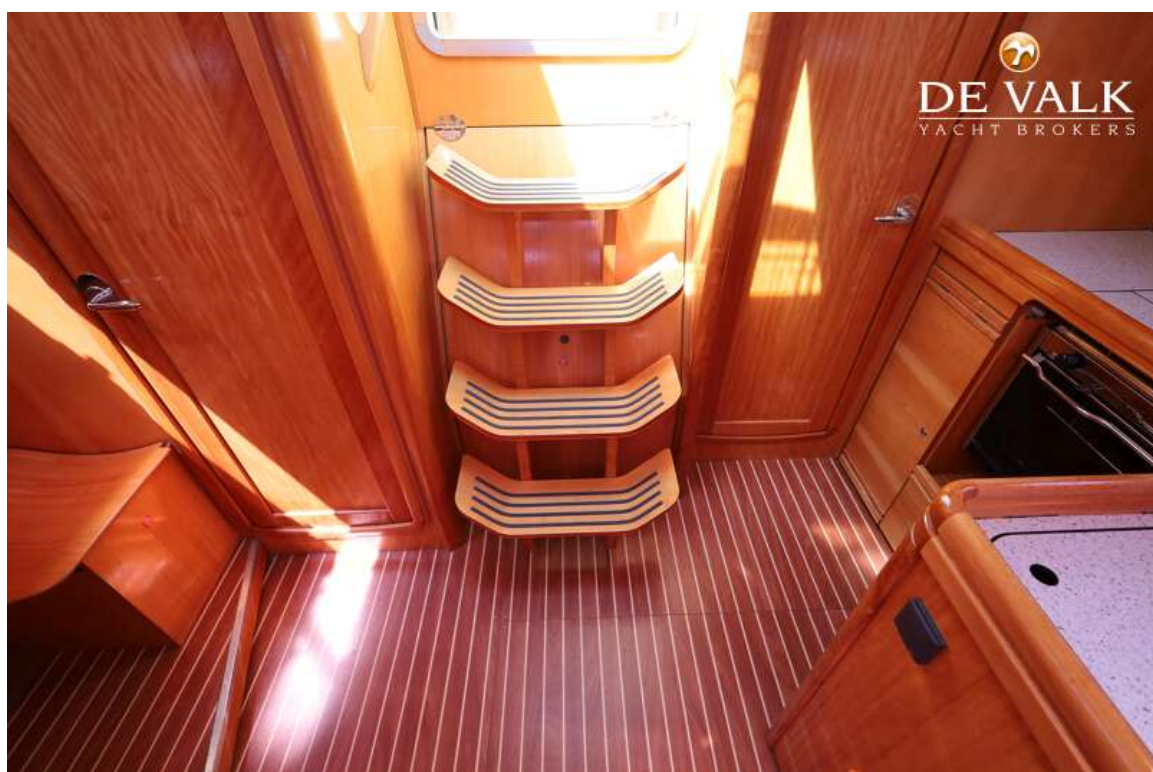
BAVARIA 38 CRUISER



BAVARIA 38 CRUISER



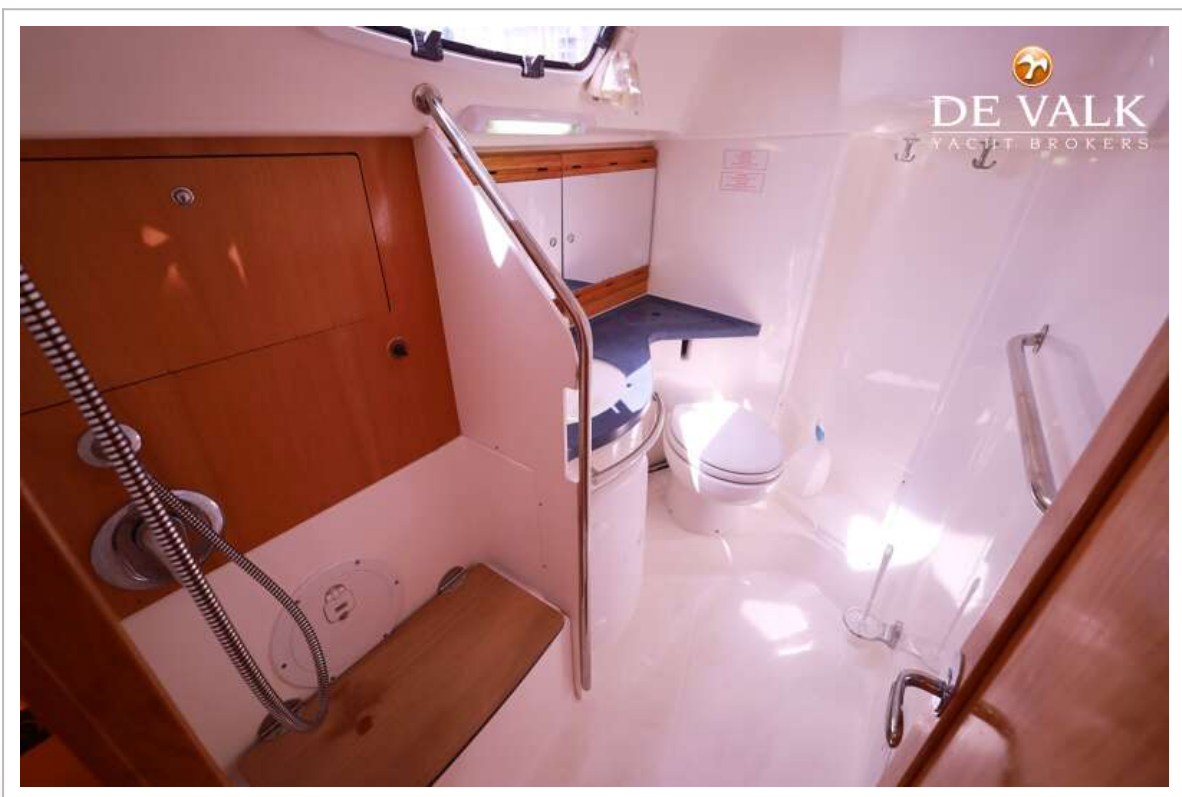
BAVARIA 38 CRUISER



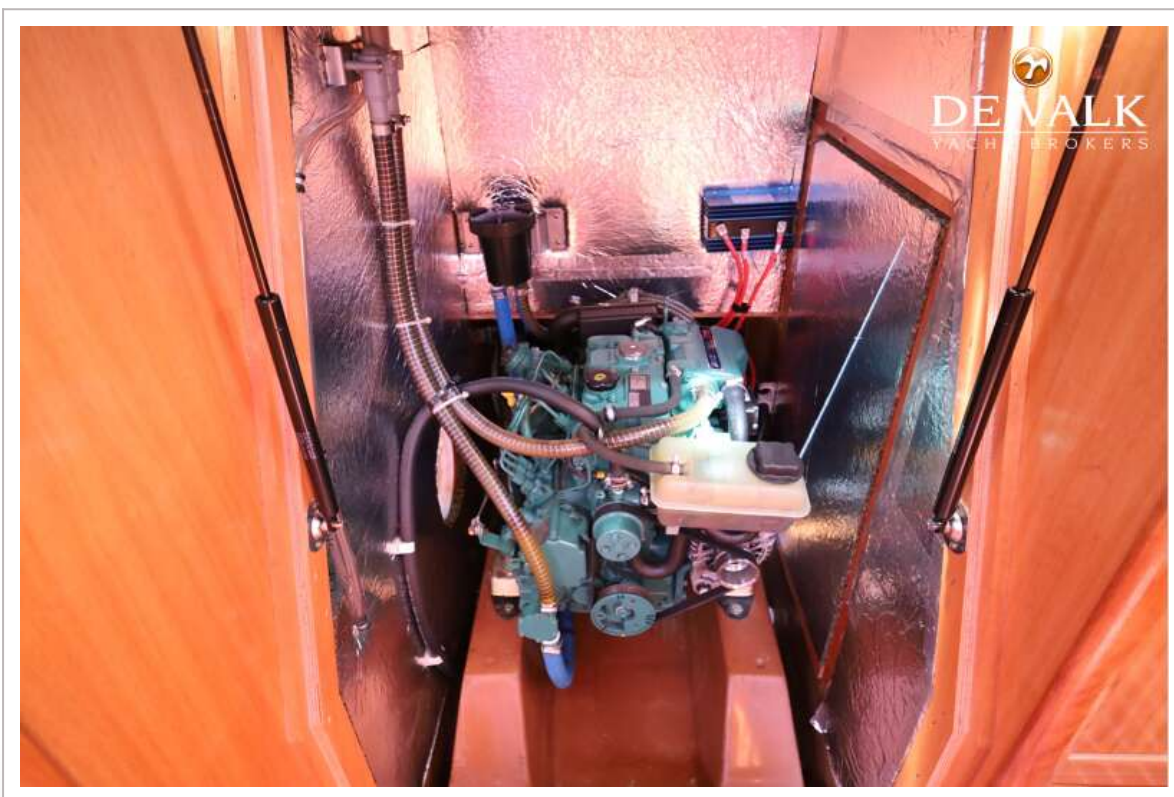
BAVARIA 38 CRUISER



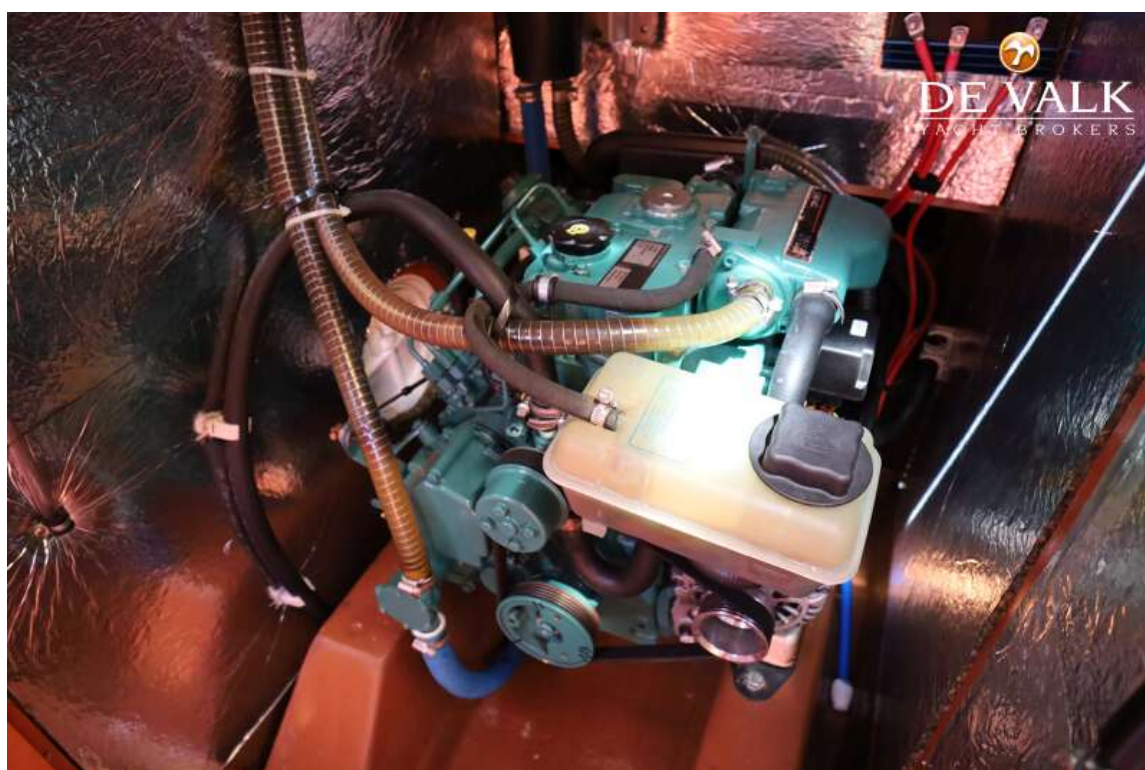
BAVARIA 38 CRUISER



BAVARIA 38 CRUISER



BAVARIA 38 CRUISER



BAVARIA 38 CRUISER



BAVARIA 38 CRUISER

